



wwPDB X-ray Structure Validation Summary Report ⓘ

Feb 1, 2016 – 07:52 AM GMT

PDB ID : 3CHB
Title : CHOLERA TOXIN B-PENTAMER COMPLEXED WITH GM1 PEN-
TASACCHARIDE
Authors : Merritt, E.A.; Hol, W.G.J.
Deposited on : 1998-03-24
Resolution : 1.25 Å(reported)

This is a wwPDB X-ray Structure Validation Summary Report for a publicly released PDB entry.
We welcome your comments at validation@mail.wwpdb.org
A user guide is available at
<http://wwpdb.org/validation/2016/XrayValidationReportHelp>
with specific help available everywhere you see the ⓘ symbol.

The following versions of software and data (see [references ⓘ](#)) were used in the production of this report:

MolProbity : 4.02b-467
Mogul : 1.7 (RC4), CSD as536be (2015)
Xtriage (Phenix) : 1.9-1692
EDS : rb-20026688
Percentile statistics : 20151230.v01 (using entries in the PDB archive December 30th 2015)
Refmac : 5.8.0135
CCP4 : 6.5.0
Ideal geometry (proteins) : Engh & Huber (2001)
Ideal geometry (DNA, RNA) : Parkinson et al. (1996)
Validation Pipeline (wwPDB-VP) : trunk26865

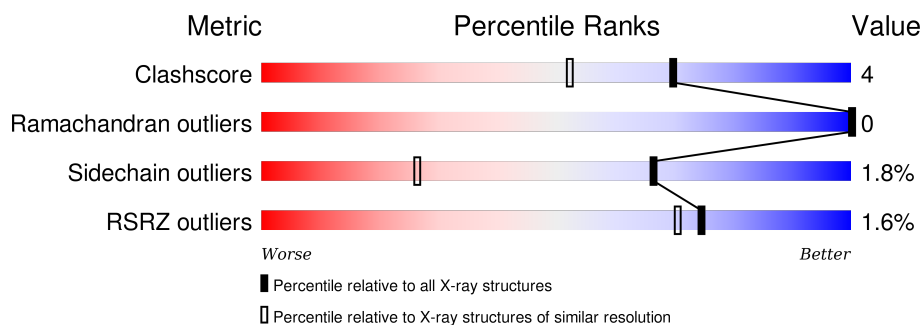
1 Overall quality at a glance

The following experimental techniques were used to determine the structure:

X-RAY DIFFRACTION

The reported resolution of this entry is 1.25 Å.

Percentile scores (ranging between 0-100) for global validation metrics of the entry are shown in the following graphic. The table shows the number of entries on which the scores are based.



Metric	Whole archive (#Entries)	Similar resolution (#Entries, resolution range(Å))
Clashscore	102246	1530 (1.30-1.22)
Ramachandran outliers	100387	1467 (1.30-1.22)
Sidechain outliers	100360	1465 (1.30-1.22)
RSRZ outliers	91569	1442 (1.30-1.22)

The table below summarises the geometric issues observed across the polymeric chains and their fit to the electron density. The red, orange, yellow and green segments on the lower bar indicate the fraction of residues that contain outliers for ≥ 3 , 2, 1 and 0 types of geometric quality criteria. A grey segment represents the fraction of residues that are not modelled. The numeric value for each fraction is indicated below the corresponding segment, with a dot representing fractions $\leq 5\%$. The upper red bar (where present) indicates the fraction of residues that have poor fit to the electron density. The numeric value is given above the bar.

Mol	Chain	Length	Quality of chain
1	D	104	<div> <div></div> <div>81%16%..</div> </div>
1	E	104	<div> <div></div> <div>84%13%..</div> </div>
1	F	104	<div> <div>4%</div> <div>88%12%.</div> </div>
1	G	104	<div> <div></div> <div>85%13%..</div> </div>
1	H	104	<div> <div></div> <div>88%12%.</div> </div>

The following table lists non-polymeric compounds, carbohydrate monomers and non-standard residues in protein, DNA, RNA chains that are outliers for geometric or electron-density-fit crite-

ria:

Mol	Type	Chain	Res	Chirality	Geometry	Clashes	Electron density
2	GAL	D	104	-	-	-	X
2	NGA	D	105	-	-	-	X
2	SIA	D	108	-	-	-	X
2	GAL	F	104	-	-	-	X
2	NGA	F	105	-	-	-	X
2	SIA	F	108	-	-	-	X
3	UNX	D	109	-	-	-	X
3	UNX	E	109	-	-	-	X
3	UNX	F	109	-	-	-	X
3	UNX	G	109	-	-	-	X
3	UNX	H	109	-	-	-	X
4	BGC	E	107	-	-	-	X
4	SIA	E	108	-	-	-	X
4	NGA	G	105	-	-	-	X
4	BGC	G	107	-	-	-	X
4	SIA	G	108	-	-	-	X
4	GAL	H	104	-	-	-	X
4	NGA	H	105	-	-	-	X
4	BGC	H	107	-	-	-	X
4	SIA	H	108	-	-	-	X
5	MES	G	6002	-	-	-	X

2 Entry composition

There are 6 unique types of molecules in this entry. The entry contains 5203 atoms, of which 0 are hydrogens and 0 are deuteriums.

In the tables below, the ZeroOcc column contains the number of atoms modelled with zero occupancy, the AltConf column contains the number of residues with at least one atom in alternate conformation and the Trace column contains the number of residues modelled with at most 2 atoms.

- Molecule 1 is a protein called CHOLERA TOXIN.

Mol	Chain	Residues	Atoms					ZeroOcc	AltConf	Trace
1	D	103	Total	C	N	O	S	0	3	0
			823	517	144	156	6			
1	E	103	Total	C	N	O	S	0	3	0
			823	517	144	156	6			
1	F	103	Total	C	N	O	S	0	1	0
			816	511	143	156	6			
1	G	103	Total	C	N	O	S	0	2	0
			818	513	143	156	6			
1	H	103	Total	C	N	O	S	0	2	0
			818	513	143	156	6			

There are 115 discrepancies between the modelled and reference sequences:

Chain	Residue	Modelled	Actual	Comment	Reference
D	?	-	ILE	DELETION	UNP P01556
D	?	-	LYS	DELETION	UNP P01556
D	?	-	LEU	DELETION	UNP P01556
D	?	-	LYS	DELETION	UNP P01556
D	?	-	PHE	DELETION	UNP P01556
D	?	-	GLY	DELETION	UNP P01556
D	?	-	VAL	DELETION	UNP P01556
D	?	-	PHE	DELETION	UNP P01556
D	?	-	PHE	DELETION	UNP P01556
D	?	-	THR	DELETION	UNP P01556
D	?	-	VAL	DELETION	UNP P01556
D	?	-	LEU	DELETION	UNP P01556
D	?	-	LEU	DELETION	UNP P01556
D	?	-	SER	DELETION	UNP P01556
D	?	-	SER	DELETION	UNP P01556
D	?	-	ALA	DELETION	UNP P01556
D	?	-	TYR	DELETION	UNP P01556
D	?	-	ALA	DELETION	UNP P01556
D	?	-	HIS	DELETION	UNP P01556

Continued on next page...

Continued from previous page...

Chain	Residue	Modelled	Actual	Comment	Reference
D	?	-	GLY	DELETION	UNP P01556
D	18	HIS	TYR	CONFLICT	UNP P01556
D	47	THR	ILE	CONFLICT	UNP P01556
D	94	ARG	HIS	CLONING ARTIFACT	UNP P01556
E	?	-	ILE	DELETION	UNP P01556
E	?	-	LYS	DELETION	UNP P01556
E	?	-	LEU	DELETION	UNP P01556
E	?	-	LYS	DELETION	UNP P01556
E	?	-	PHE	DELETION	UNP P01556
E	?	-	GLY	DELETION	UNP P01556
E	?	-	VAL	DELETION	UNP P01556
E	?	-	PHE	DELETION	UNP P01556
E	?	-	PHE	DELETION	UNP P01556
E	?	-	THR	DELETION	UNP P01556
E	?	-	VAL	DELETION	UNP P01556
E	?	-	LEU	DELETION	UNP P01556
E	?	-	LEU	DELETION	UNP P01556
E	?	-	SER	DELETION	UNP P01556
E	?	-	SER	DELETION	UNP P01556
E	?	-	ALA	DELETION	UNP P01556
E	?	-	TYR	DELETION	UNP P01556
E	?	-	ALA	DELETION	UNP P01556
E	?	-	HIS	DELETION	UNP P01556
E	?	-	GLY	DELETION	UNP P01556
E	18	HIS	TYR	CONFLICT	UNP P01556
E	47	THR	ILE	CONFLICT	UNP P01556
E	94	ARG	HIS	CLONING ARTIFACT	UNP P01556
F	?	-	ILE	DELETION	UNP P01556
F	?	-	LYS	DELETION	UNP P01556
F	?	-	LEU	DELETION	UNP P01556
F	?	-	LYS	DELETION	UNP P01556
F	?	-	PHE	DELETION	UNP P01556
F	?	-	GLY	DELETION	UNP P01556
F	?	-	VAL	DELETION	UNP P01556
F	?	-	PHE	DELETION	UNP P01556
F	?	-	PHE	DELETION	UNP P01556
F	?	-	THR	DELETION	UNP P01556
F	?	-	VAL	DELETION	UNP P01556
F	?	-	LEU	DELETION	UNP P01556
F	?	-	LEU	DELETION	UNP P01556
F	?	-	SER	DELETION	UNP P01556
F	?	-	SER	DELETION	UNP P01556

Continued on next page...

Continued from previous page...

Chain	Residue	Modelled	Actual	Comment	Reference
F	?	-	ALA	DELETION	UNP P01556
F	?	-	TYR	DELETION	UNP P01556
F	?	-	ALA	DELETION	UNP P01556
F	?	-	HIS	DELETION	UNP P01556
F	?	-	GLY	DELETION	UNP P01556
F	18	HIS	TYR	CONFLICT	UNP P01556
F	47	THR	ILE	CONFLICT	UNP P01556
F	94	ARG	HIS	CLONING ARTIFACT	UNP P01556
G	?	-	ILE	DELETION	UNP P01556
G	?	-	LYS	DELETION	UNP P01556
G	?	-	LEU	DELETION	UNP P01556
G	?	-	LYS	DELETION	UNP P01556
G	?	-	PHE	DELETION	UNP P01556
G	?	-	GLY	DELETION	UNP P01556
G	?	-	VAL	DELETION	UNP P01556
G	?	-	PHE	DELETION	UNP P01556
G	?	-	PHE	DELETION	UNP P01556
G	?	-	THR	DELETION	UNP P01556
G	?	-	VAL	DELETION	UNP P01556
G	?	-	LEU	DELETION	UNP P01556
G	?	-	LEU	DELETION	UNP P01556
G	?	-	SER	DELETION	UNP P01556
G	?	-	SER	DELETION	UNP P01556
G	?	-	ALA	DELETION	UNP P01556
G	?	-	TYR	DELETION	UNP P01556
G	?	-	ALA	DELETION	UNP P01556
G	?	-	HIS	DELETION	UNP P01556
G	?	-	GLY	DELETION	UNP P01556
G	18	HIS	TYR	CONFLICT	UNP P01556
G	47	THR	ILE	CONFLICT	UNP P01556
G	94	ARG	HIS	CLONING ARTIFACT	UNP P01556
H	?	-	ILE	DELETION	UNP P01556
H	?	-	LYS	DELETION	UNP P01556
H	?	-	LEU	DELETION	UNP P01556
H	?	-	LYS	DELETION	UNP P01556
H	?	-	PHE	DELETION	UNP P01556
H	?	-	GLY	DELETION	UNP P01556
H	?	-	VAL	DELETION	UNP P01556
H	?	-	PHE	DELETION	UNP P01556
H	?	-	PHE	DELETION	UNP P01556
H	?	-	THR	DELETION	UNP P01556
H	?	-	VAL	DELETION	UNP P01556

Continued on next page...

Continued from previous page...

Chain	Residue	Modelled	Actual	Comment	Reference
H	?	-	LEU	DELETION	UNP P01556
H	?	-	LEU	DELETION	UNP P01556
H	?	-	SER	DELETION	UNP P01556
H	?	-	SER	DELETION	UNP P01556
H	?	-	ALA	DELETION	UNP P01556
H	?	-	TYR	DELETION	UNP P01556
H	?	-	ALA	DELETION	UNP P01556
H	?	-	HIS	DELETION	UNP P01556
H	?	-	GLY	DELETION	UNP P01556
H	18	HIS	TYR	CONFLICT	UNP P01556
H	47	THR	ILE	CONFLICT	UNP P01556
H	94	ARG	HIS	CLONING ARTIFACT	UNP P01556

- Molecule 2 is a polymer of unknown type called SUGAR (5-MER).

Mol	Chain	Residues	Atoms				ZeroOcc	AltConf
2	D	5	Total	C	N	O	0	0
			57	31	2	24		
2	F	5	Total	C	N	O	0	0
			57	31	2	24		

- Molecule 3 is UNKNOWN ATOM OR ION (three-letter code: UNX) (formula: X).

Mol	Chain	Residues	Atoms		ZeroOcc	AltConf
3	H	1	Total	X	0	0
			1	1		
3	G	1	Total	X	0	0
			1	1		
3	D	1	Total	X	0	0
			1	1		
3	F	1	Total	X	0	0
			1	1		
3	E	1	Total	X	0	0
			1	1		

- Molecule 4 is a polymer of unknown type called SUGAR (5-MER).

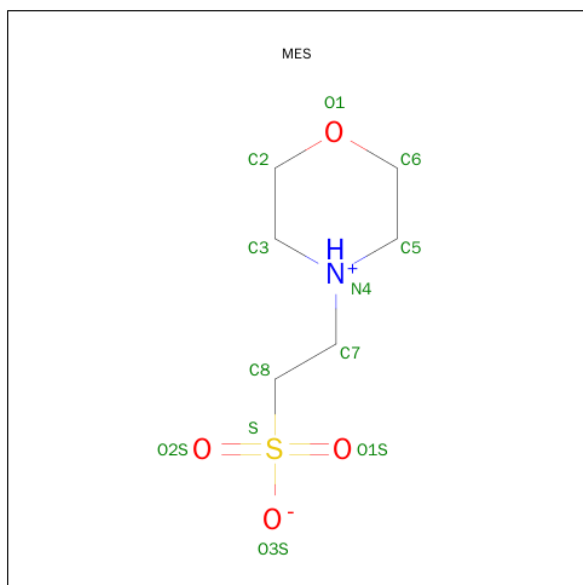
Mol	Chain	Residues	Atoms				ZeroOcc	AltConf
4	E	5	Total	C	N	O	0	0
			68	37	2	29		
4	G	5	Total	C	N	O	0	0
			68	37	2	29		

Continued on next page...

Continued from previous page...

Mol	Chain	Residues	Atoms				ZeroOcc	AltConf
4	H	5	Total	C	N	O	0	0
			68	37	2	29		

- Molecule 5 is 2-(N-MORPHOLINO)-ETHANESULFONIC ACID (three-letter code: MES) (formula: C₆H₁₃NO₄S).



Mol	Chain	Residues	Atoms					ZeroOcc	AltConf
5	G	1	Total	C	N	O	S	0	0
			12	6	1	4	1		
5	G	1	Total	C	N	O	S	0	0
			12	6	1	4	1		

- Molecule 6 is water.

Mol	Chain	Residues	Atoms		ZeroOcc	AltConf
6	D	152	Total	O	0	0
			152	152		
6	E	145	Total	O	0	0
			145	145		
6	F	135	Total	O	0	0
			135	135		
6	G	161	Total	O	0	0
			161	161		
6	H	165	Total	O	0	0
			165	165		

4 Data and refinement statistics

Property	Value	Source
Space group	C 1 2 1	Depositor
Cell constants a, b, c, α , β , γ	102.12Å 66.18Å 78.22Å 90.00° 106.33° 90.00°	Depositor
Resolution (Å)	22.00 – 1.25 21.52 – 1.25	Depositor EDS
% Data completeness (in resolution range)	92.0 (22.00-1.25) 86.5 (21.52-1.25)	Depositor EDS
R_{merge}	0.03	Depositor
R_{sym}	(Not available)	Depositor
$\langle I/\sigma(I) \rangle$ ¹	3.82 (at 1.25Å)	Xtriage
Refinement program	SHELX-96	Depositor
R, R_{free}	0.133 , 0.180 0.141 , (Not available)	Depositor DCC
R_{free} test set	No test flags present.	DCC
Wilson B-factor (Å ²)	11.0	Xtriage
Anisotropy	0.328	Xtriage
Bulk solvent k_{sol} (e/Å ³), B_{sol} (Å ²)	0.35 , 64.3	EDS
Estimated twinning fraction	No twinning to report.	Xtriage
L-test for twinning ²	$\langle L \rangle = 0.50$, $\langle L^2 \rangle = 0.33$	Xtriage
Outliers	3 of 12337 reflections (0.002%)	Xtriage
F_o, F_c correlation	0.98	EDS
Total number of atoms	5203	wwPDB-VP
Average B, all atoms (Å ²)	16.0	wwPDB-VP

Xtriage's analysis on translational NCS is as follows: *The largest off-origin peak in the Patterson function is 8.03% of the height of the origin peak. No significant pseudotranslation is detected.*

¹Intensities estimated from amplitudes.

²Theoretical values of $\langle |L| \rangle$, $\langle L^2 \rangle$ for acentric reflections are 0.5, 0.375 respectively for untwinned datasets, and 0.333, 0.2 for perfectly twinned datasets.

5 Model quality [i](#)

5.1 Standard geometry [i](#)

Bond lengths and bond angles in the following residue types are not validated in this section: BGC, NGA, UNX, GLC, SIA, GAL, MES

The Z score for a bond length (or angle) is the number of standard deviations the observed value is removed from the expected value. A bond length (or angle) with $|Z| > 5$ is considered an outlier worth inspection. RMSZ is the root-mean-square of all Z scores of the bond lengths (or angles).

Mol	Chain	Bond lengths		Bond angles	
		RMSZ	$\# Z > 5$	RMSZ	$\# Z > 5$
1	D	0.69	0/851	1.46	14/1147 (1.2%)
1	E	0.66	0/851	1.42	13/1147 (1.1%)
1	F	0.64	0/834	1.43	9/1125 (0.8%)
1	G	0.67	0/842	1.36	10/1136 (0.9%)
1	H	0.66	0/842	1.34	11/1136 (1.0%)
All	All	0.66	0/4220	1.40	57/5691 (1.0%)

There are no bond length outliers.

The worst 5 of 57 bond angle outliers are listed below:

Mol	Chain	Res	Type	Atoms	Z	Observed($^{\circ}$)	Ideal($^{\circ}$)
1	F	73	ARG	NE-CZ-NH2	17.87	129.24	120.30
1	H	73	ARG	NE-CZ-NH2	13.96	127.28	120.30
1	G	67	ARG	NE-CZ-NH2	-13.59	113.50	120.30
1	D	67	ARG	NE-CZ-NH1	12.84	126.72	120.30
1	H	67	ARG	NE-CZ-NH1	12.70	126.65	120.30

There are no chirality outliers.

There are no planarity outliers.

5.2 Too-close contacts [i](#)

In the following table, the Non-H and H(model) columns list the number of non-hydrogen atoms and hydrogen atoms in the chain respectively. The H(added) column lists the number of hydrogen atoms added and optimized by MolProbity. The Clashes column lists the number of clashes within the asymmetric unit, whereas Symm-Clashes lists symmetry related clashes.

Mol	Chain	Non-H	H(model)	H(added)	Clashes	Symm-Clashes
1	D	823	0	834	12	0

Continued on next page...

Continued from previous page...

Mol	Chain	Non-H	H(model)	H(added)	Clashes	Symm-Clashes
1	E	823	0	833	6	0
1	F	816	0	824	5	0
1	G	818	0	824	9	0
1	H	818	0	825	3	0
2	D	57	0	47	6	0
2	F	57	0	47	1	0
3	D	1	0	0	1	0
3	E	1	0	0	1	0
3	F	1	0	0	1	0
3	G	1	0	0	1	0
3	H	1	0	0	1	0
4	E	68	0	58	0	0
4	G	68	0	58	1	0
4	H	68	0	58	0	0
5	G	24	0	26	1	0
6	D	152	0	0	7	0
6	E	145	0	0	3	0
6	F	135	0	0	4	0
6	G	161	0	0	4	0
6	H	165	0	0	0	0
All	All	5203	0	4434	40	0

The all-atom clashscore is defined as the number of clashes found per 1000 atoms (including hydrogen atoms). The all-atom clashscore for this structure is 4.

The worst 5 of 40 close contacts within the same asymmetric unit are listed below, sorted by their clash magnitude.

Atom-1	Atom-2	Interatomic distance (Å)	Clash overlap (Å)
1:D:74[B]:ILE:HD12	6:D:9835:HOH:O	1.82	0.78
1:F:9[B]:CYS:SG	3:F:109:UNX:UNK	2.07	0.76
1:D:9[B]:CYS:SG	3:D:109:UNX:UNK	2.09	0.74
1:G:9[B]:CYS:SG	3:G:109:UNX:UNK	2.09	0.73
1:H:9[B]:CYS:SG	3:H:109:UNX:UNK	2.09	0.73

There are no symmetry-related clashes.

5.3 Torsion angles

5.3.1 Protein backbone

In the following table, the Percentiles column shows the percent Ramachandran outliers of the chain as a percentile score with respect to all X-ray entries followed by that with respect to entries of similar resolution.

The Analysed column shows the number of residues for which the backbone conformation was analysed, and the total number of residues.

Mol	Chain	Analysed	Favoured	Allowed	Outliers	Percentiles	
1	D	104/104 (100%)	103 (99%)	1 (1%)	0	100	100
1	E	104/104 (100%)	103 (99%)	1 (1%)	0	100	100
1	F	102/104 (98%)	101 (99%)	1 (1%)	0	100	100
1	G	103/104 (99%)	102 (99%)	1 (1%)	0	100	100
1	H	103/104 (99%)	102 (99%)	1 (1%)	0	100	100
All	All	516/520 (99%)	511 (99%)	5 (1%)	0	100	100

There are no Ramachandran outliers to report.

5.3.2 Protein sidechains

In the following table, the Percentiles column shows the percent sidechain outliers of the chain as a percentile score with respect to all X-ray entries followed by that with respect to entries of similar resolution.

The Analysed column shows the number of residues for which the sidechain conformation was analysed, and the total number of residues.

Mol	Chain	Analysed	Rotameric	Outliers	Percentiles	
1	D	92/90 (102%)	89 (97%)	3 (3%)	45	7
1	E	92/90 (102%)	90 (98%)	2 (2%)	60	18
1	F	90/90 (100%)	89 (99%)	1 (1%)	80	48
1	G	91/90 (101%)	90 (99%)	1 (1%)	80	48
1	H	91/90 (101%)	90 (99%)	1 (1%)	80	48
All	All	456/450 (101%)	448 (98%)	8 (2%)	66	26

5 of 8 residues with a non-rotameric sidechain are listed below:

Mol	Chain	Res	Type
1	E	56	GLN
1	H	103	ASN
1	F	63	LYS
1	D	103	ASN
1	E	94	ARG

Some sidechains can be flipped to improve hydrogen bonding and reduce clashes. 5 of 8 such sidechains are listed below:

Mol	Chain	Res	Type
1	E	103	ASN
1	H	103	ASN
1	G	13	HIS
1	D	18	HIS
1	F	18	HIS

5.3.3 RNA [i](#)

There are no RNA molecules in this entry.

5.4 Non-standard residues in protein, DNA, RNA chains [i](#)

There are no non-standard protein/DNA/RNA residues in this entry.

5.5 Carbohydrates [i](#)

Of 25 carbohydrates modelled in this entry, 2 are modelled with single atom - leaving 23 for Mogul analysis.

In the following table, the Counts columns list the number of bonds (or angles) for which Mogul statistics could be retrieved, the number of bonds (or angles) that are observed in the model and the number of bonds (or angles) that are defined in the chemical component dictionary. The Link column lists molecule types, if any, to which the group is linked. The Z score for a bond length (or angle) is the number of standard deviations the observed value is removed from the expected value. A bond length (or angle) with $|Z| > 2$ is considered an outlier worth inspection. RMSZ is the root-mean-square of all Z scores of the bond lengths (or angles).

Mol	Type	Chain	Res	Link	Bond lengths			Bond angles		
					Counts	RMSZ	$\# Z > 2$	Counts	RMSZ	$\# Z > 2$
2	GAL	D	104	2	11,11,12	0.53	0	14,15,17	1.16	1 (7%)
2	NGA	D	105	2	14,14,15	0.76	0	15,19,21	1.98	5 (33%)
2	GAL	D	106	2	11,11,12	0.48	0	14,15,17	1.46	2 (14%)

Mol	Type	Chain	Res	Link	Bond lengths			Bond angles		
					Counts	RMSZ	# Z > 2	Counts	RMSZ	# Z > 2
2	SIA	D	108	2	16,20,21	0.83	1 (6%)	18,28,31	1.93	7 (38%)
4	GAL	E	104	4	11,11,12	0.28	0	14,15,17	0.87	0
4	NGA	E	105	4	14,14,15	0.83	1 (7%)	15,19,21	1.11	1 (6%)
4	GAL	E	106	4	11,11,12	0.53	0	14,15,17	1.27	2 (14%)
4	BGC	E	107	4	12,12,12	0.57	0	17,17,17	1.04	1 (5%)
4	SIA	E	108	4	16,20,21	0.97	1 (6%)	18,28,31	1.44	3 (16%)
2	GAL	F	104	2	11,11,12	0.42	0	14,15,17	1.21	1 (7%)
2	NGA	F	105	2	14,14,15	0.85	1 (7%)	15,19,21	1.89	4 (26%)
2	GAL	F	106	2	11,11,12	0.49	0	14,15,17	1.59	2 (14%)
2	SIA	F	108	2	16,20,21	0.75	0	18,28,31	2.06	7 (38%)
4	GAL	G	104	4	11,11,12	0.71	0	14,15,17	0.94	1 (7%)
4	NGA	G	105	4	14,14,15	0.80	0	15,19,21	1.26	1 (6%)
4	GAL	G	106	4	11,11,12	0.68	0	14,15,17	1.30	1 (7%)
4	BGC	G	107	4	12,12,12	0.51	0	17,17,17	1.26	1 (5%)
4	SIA	G	108	4	16,20,21	0.90	0	18,28,31	1.13	1 (5%)
4	GAL	H	104	4	11,11,12	0.38	0	14,15,17	1.16	1 (7%)
4	NGA	H	105	4	14,14,15	0.77	0	15,19,21	1.65	3 (20%)
4	GAL	H	106	4	11,11,12	0.48	0	14,15,17	1.47	2 (14%)
4	BGC	H	107	4	12,12,12	0.66	0	17,17,17	1.72	3 (17%)
4	SIA	H	108	4	16,20,21	0.71	0	18,28,31	1.64	3 (16%)

In the following table, the Chirals column lists the number of chiral outliers, the number of chiral centers analysed, the number of these observed in the model and the number defined in the chemical component dictionary. Similar counts are reported in the Torsion and Rings columns. '-' means no outliers of that kind were identified.

Mol	Type	Chain	Res	Link	Chirals	Torsions	Rings
2	GAL	D	104	2	-	0/2/19/22	0/1/1/1
2	NGA	D	105	2	-	0/6/23/26	0/1/1/1
2	GAL	D	106	2	-	0/2/19/22	0/1/1/1
2	SIA	D	108	2	-	0/14/34/38	0/1/1/1
4	GAL	E	104	4	-	0/2/19/22	0/1/1/1
4	NGA	E	105	4	-	0/6/23/26	0/1/1/1
4	GAL	E	106	4	-	0/2/19/22	0/1/1/1
4	BGC	E	107	4	-	0/2/22/22	0/1/1/1
4	SIA	E	108	4	-	0/14/34/38	0/1/1/1
2	GAL	F	104	2	-	0/2/19/22	0/1/1/1
2	NGA	F	105	2	-	0/6/23/26	0/1/1/1

Continued on next page...

Continued from previous page...

Mol	Type	Chain	Res	Link	Chirals	Torsions	Rings
2	GAL	F	106	2	-	0/2/19/22	0/1/1/1
2	SIA	F	108	2	-	0/14/34/38	0/1/1/1
4	GAL	G	104	4	-	0/2/19/22	0/1/1/1
4	NGA	G	105	4	-	0/6/23/26	0/1/1/1
4	GAL	G	106	4	-	0/2/19/22	0/1/1/1
4	BGC	G	107	4	-	0/2/22/22	0/1/1/1
4	SIA	G	108	4	-	0/14/34/38	0/1/1/1
4	GAL	H	104	4	-	0/2/19/22	0/1/1/1
4	NGA	H	105	4	-	0/6/23/26	0/1/1/1
4	GAL	H	106	4	-	0/2/19/22	0/1/1/1
4	BGC	H	107	4	-	0/2/22/22	0/1/1/1
4	SIA	H	108	4	-	0/14/34/38	0/1/1/1

All (4) bond length outliers are listed below:

Mol	Chain	Res	Type	Atoms	Z	Observed(Å)	Ideal(Å)
4	E	105	NGA	C8-C7	2.02	1.54	1.50
2	F	105	NGA	C8-C7	2.12	1.54	1.50
4	E	108	SIA	C11-C10	2.34	1.55	1.50
2	D	108	SIA	C11-C10	2.41	1.55	1.50

The worst 5 of 53 bond angle outliers are listed below:

Mol	Chain	Res	Type	Atoms	Z	Observed(°)	Ideal(°)
4	E	108	SIA	C8-C7-C6	-3.36	106.26	113.01
2	D	108	SIA	C3-C4-C5	-3.20	107.90	111.47
4	E	106	GAL	O3-C3-C2	-3.20	104.22	110.00
4	H	108	SIA	C8-C7-C6	-3.14	106.69	113.01
4	H	105	NGA	C8-C7-N2	-3.00	110.36	116.11

There are no chirality outliers.

There are no torsion outliers.

There are no ring outliers.

5 monomers are involved in 8 short contacts:

Mol	Chain	Res	Type	Clashes	Symm-Clashes
2	D	105	NGA	3	0
2	D	106	GAL	1	0
2	D	108	SIA	3	0
2	F	105	NGA	1	0
4	G	105	NGA	1	0

5.6 Ligand geometry

Of 7 ligands modelled in this entry, 5 are unknown - leaving 2 for Mogul analysis.

In the following table, the Counts columns list the number of bonds (or angles) for which Mogul statistics could be retrieved, the number of bonds (or angles) that are observed in the model and the number of bonds (or angles) that are defined in the chemical component dictionary. The Link column lists molecule types, if any, to which the group is linked. The Z score for a bond length (or angle) is the number of standard deviations the observed value is removed from the expected value. A bond length (or angle) with $|Z| > 2$ is considered an outlier worth inspection. RMSZ is the root-mean-square of all Z scores of the bond lengths (or angles).

Mol	Type	Chain	Res	Link	Bond lengths			Bond angles		
					Counts	RMSZ	$\# Z > 2$	Counts	RMSZ	$\# Z > 2$
5	MES	G	6001	-	11,12,12	1.09	0	14,16,16	0.74	0
5	MES	G	6002	-	11,12,12	1.24	2 (18%)	14,16,16	1.84	2 (14%)

In the following table, the Chirals column lists the number of chiral outliers, the number of chiral centers analysed, the number of these observed in the model and the number defined in the chemical component dictionary. Similar counts are reported in the Torsion and Rings columns. '-' means no outliers of that kind were identified.

Mol	Type	Chain	Res	Link	Chirals	Torsions	Rings
5	MES	G	6001	-	-	0/6/14/14	0/1/1/1
5	MES	G	6002	-	-	0/6/14/14	0/1/1/1

All (2) bond length outliers are listed below:

Mol	Chain	Res	Type	Atoms	Z	Observed(Å)	Ideal(Å)
5	G	6002	MES	C5-N4	2.22	1.53	1.46
5	G	6002	MES	C7-N4	2.58	1.53	1.47

All (2) bond angle outliers are listed below:

Mol	Chain	Res	Type	Atoms	Z	Observed(°)	Ideal(°)
5	G	6002	MES	O2S-S-C8	-5.26	102.42	106.91
5	G	6002	MES	C6-C5-N4	-2.25	106.72	110.12

There are no chirality outliers.

There are no torsion outliers.

There are no ring outliers.

1 monomer is involved in 1 short contact:

Mol	Chain	Res	Type	Clashes	Symm-Clashes
5	G	6001	MES	1	0

5.7 Other polymers [i](#)

There are no such residues in this entry.

5.8 Polymer linkage issues [i](#)

There are no chain breaks in this entry.

6 Fit of model and data [i](#)

6.1 Protein, DNA and RNA chains [i](#)

In the following table, the column labelled ‘#RSRZ> 2’ contains the number (and percentage) of RSRZ outliers, followed by percent RSRZ outliers for the chain as percentile scores relative to all X-ray entries and entries of similar resolution. The OWAB column contains the minimum, median, 95th percentile and maximum values of the occupancy-weighted average B-factor per residue. The column labelled ‘Q< 0.9’ lists the number of (and percentage) of residues with an average occupancy less than 0.9.

Mol	Chain	Analysed	<RSRZ>	#RSRZ>2	OWAB(Å ²)	Q<0.9
1	D	103/104 (99%)	-0.29	1 (0%) 84 82	9, 11, 22, 31	1 (0%)
1	E	103/104 (99%)	-0.20	1 (0%) 84 82	9, 13, 23, 39	0
1	F	103/104 (99%)	-0.12	4 (3%) 43 35	10, 16, 25, 40	0
1	G	103/104 (99%)	-0.41	1 (0%) 84 82	9, 12, 20, 40	0
1	H	103/104 (99%)	-0.38	1 (0%) 84 82	8, 11, 19, 38	0
All	All	515/520 (99%)	-0.28	8 (1%) 74 70	8, 12, 23, 40	1 (0%)

The worst 5 of 8 RSRZ outliers are listed below:

Mol	Chain	Res	Type	RSRZ
1	E	103	ASN	6.2
1	G	103	ASN	4.7
1	F	103	ASN	3.9
1	H	103	ASN	3.8
1	F	55	SER	3.2

6.2 Non-standard residues in protein, DNA, RNA chains [i](#)

There are no non-standard protein/DNA/RNA residues in this entry.

6.3 Carbohydrates [i](#)

In the following table, the Atoms column lists the number of modelled atoms in the group and the number defined in the chemical component dictionary. LLDF column lists the quality of electron density of the group with respect to its neighbouring residues in protein, DNA or RNA chains. The B-factors column lists the minimum, median, 95th percentile and maximum values of B factors of atoms in the group. The column labelled ‘Q< 0.9’ lists the number of atoms with occupancy less than 0.9.

Mol	Type	Chain	Res	Atoms	RSCC	RSR	LLDF	B-factors(\AA^2)	Q<0.9
4	NGA	H	105	14/15	0.89	0.21	16.44	17,22,26,36	0
2	SIA	D	108	20/21	0.62	0.31	15.84	17,31,34,38	20
2	NGA	D	105	14/15	0.47	0.31	13.10	19,23,28,30	14
4	BGC	G	107	12/12	0.79	0.24	11.89	19,23,27,30	0
4	NGA	G	105	14/15	0.89	0.20	9.37	16,18,24,34	0
4	SIA	G	108	20/21	0.87	0.16	8.79	17,20,23,24	0
4	BGC	H	107	12/12	0.73	0.29	7.49	22,33,38,40	0
2	GAL	D	104	11/12	0.91	0.19	7.15	7,11,14,18	11
4	BGC	E	107	12/12	0.90	0.17	7.07	18,23,26,30	0
2	GAL	F	104	11/12	0.85	0.18	4.82	12,14,18,18	11
4	SIA	E	108	20/21	0.89	0.13	3.70	18,20,25,26	0
2	NGA	F	105	14/15	0.58	0.32	3.41	23,27,29,31	14
2	SIA	F	108	20/21	0.69	0.21	2.92	20,25,28,29	20
4	SIA	H	108	20/21	0.82	0.18	2.63	20,23,26,26	0
4	GAL	H	104	11/12	0.95	0.07	2.08	11,11,14,15	0
4	GAL	E	104	11/12	0.95	0.08	0.46	13,14,17,17	0
4	GAL	G	104	11/12	0.98	0.06	0.36	10,11,13,14	0
2	GAL	F	106	11/12	0.62	0.31	-	27,28,31,33	11
4	GAL	G	106	11/12	0.93	0.28	-	17,19,22,22	0
2	GLC	F	107	1/12	0.82	0.14	-	34,34,34,34	1
4	GAL	E	106	11/12	0.91	0.19	-	18,18,21,21	0
2	GAL	D	106	11/12	0.49	0.37	-	28,30,31,33	11
4	NGA	E	105	14/15	0.85	0.20	-	18,20,33,34	0
4	GAL	H	106	11/12	0.85	0.25	-	22,25,31,34	0
2	GLC	D	107	1/12	0.73	0.32	-	32,32,32,32	1

6.4 Ligands [i](#)

In the following table, the Atoms column lists the number of modelled atoms in the group and the number defined in the chemical component dictionary. LLDF column lists the quality of electron density of the group with respect to its neighbouring residues in protein, DNA or RNA chains. The B-factors column lists the minimum, median, 95th percentile and maximum values of B factors of atoms in the group. The column labelled 'Q< 0.9' lists the number of atoms with occupancy less than 0.9.

Mol	Type	Chain	Res	Atoms	RSCC	RSR	LLDF	B-factors(\AA^2)	Q<0.9
3	UNX	F	109	1/1	0.94	1.19	124.69	21,21,21,21	1
3	UNX	D	109	1/1	0.85	1.16	93.81	17,17,17,17	1
3	UNX	H	109	1/1	0.82	0.83	85.60	18,18,18,18	1
3	UNX	E	109	1/1	0.81	0.91	63.68	22,22,22,22	1
3	UNX	G	109	1/1	0.93	0.92	56.65	18,18,18,18	1
5	MES	G	6002	12/12	0.94	0.16	4.83	21,23,25,28	0

Continued on next page...

Continued from previous page...

Mol	Type	Chain	Res	Atoms	RSCC	RSR	LLDF	B-factors(\AA^2)	Q<0.9
5	MES	G	6001	12/12	0.97	0.10	1.56	13,15,19,20	0

6.5 Other polymers [i](#)

There are no such residues in this entry.