



# wwPDB X-ray Structure Validation Summary Report ⓘ

Feb 1, 2016 – 07:53 AM GMT

PDB ID : 3CJO  
Title : Crystal structure of KSP in complex with inhibitor 30  
Authors : Yan, Y.  
Deposited on : 2008-03-13  
Resolution : 2.28 Å(reported)

This is a wwPDB X-ray Structure Validation Summary Report for a publicly released PDB entry.  
We welcome your comments at [validation@mail.wwpdb.org](mailto:validation@mail.wwpdb.org)  
A user guide is available at  
<http://wwpdb.org/validation/2016/XrayValidationReportHelp>  
with specific help available everywhere you see the ⓘ symbol.

---

The following versions of software and data (see [references ⓘ](#)) were used in the production of this report:

MolProbity : 4.02b-467  
Mogul : 1.7 (RC4), CSD as536be (2015)  
Xtriage (Phenix) : 1.9-1692  
EDS : rb-20026688  
Percentile statistics : 20151230.v01 (using entries in the PDB archive December 30th 2015)  
Refmac : 5.8.0135  
CCP4 : 6.5.0  
Ideal geometry (proteins) : Engh & Huber (2001)  
Ideal geometry (DNA, RNA) : Parkinson et al. (1996)  
Validation Pipeline (wwPDB-VP) : trunk26865

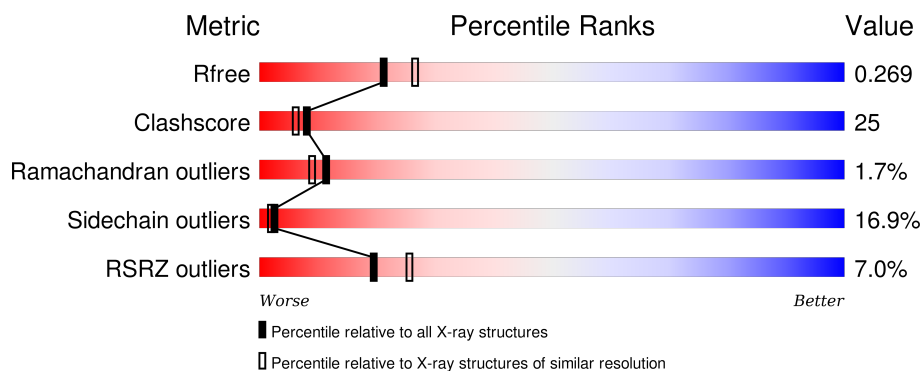
# 1 Overall quality at a glance

The following experimental techniques were used to determine the structure:

## *X-RAY DIFFRACTION*

The reported resolution of this entry is 2.28 Å.

Percentile scores (ranging between 0-100) for global validation metrics of the entry are shown in the following graphic. The table shows the number of entries on which the scores are based.



Metric	Whole archive (#Entries)	Similar resolution (#Entries, resolution range(Å))
$R_{free}$	91344	5193 (2.30-2.26)
Clashscore	102246	5929 (2.30-2.26)
Ramachandran outliers	100387	5851 (2.30-2.26)
Sidechain outliers	100360	5850 (2.30-2.26)
RSRZ outliers	91569	5204 (2.30-2.26)

The table below summarises the geometric issues observed across the polymeric chains and their fit to the electron density. The red, orange, yellow and green segments on the lower bar indicate the fraction of residues that contain outliers for  $\geq 3$ , 2, 1 and 0 types of geometric quality criteria. A grey segment represents the fraction of residues that are not modelled. The numeric value for each fraction is indicated below the corresponding segment, with a dot representing fractions  $\leq 5\%$ . The upper red bar (where present) indicates the fraction of residues that have poor fit to the electron density. The numeric value is given above the bar.

Mol	Chain	Length	Quality of chain
1	A	367	<div> <div>8%</div> <div>52%</div> <div>29%</div> <div>8%</div> <div>10%</div> </div>
1	B	367	<div> <div>4%</div> <div>47%</div> <div>34%</div> <div>9%</div> <div>10%</div> </div>

## 2 Entry composition [i](#)

There are 5 unique types of molecules in this entry. The entry contains 5633 atoms, of which 0 are hydrogens and 0 are deuteriums.

In the tables below, the ZeroOcc column contains the number of atoms modelled with zero occupancy, the AltConf column contains the number of residues with at least one atom in alternate conformation and the Trace column contains the number of residues modelled with at most 2 atoms.

- Molecule 1 is a protein called Kinesin-like protein KIF11.

Mol	Chain	Residues	Atoms					ZeroOcc	AltConf	Trace
1	A	330	Total	C	N	O	S	0	0	0
			2594	1624	452	508	10			
1	B	330	Total	C	N	O	S	0	0	0
			2594	1624	452	508	10			

- Molecule 2 is MAGNESIUM ION (three-letter code: MG) (formula: Mg).

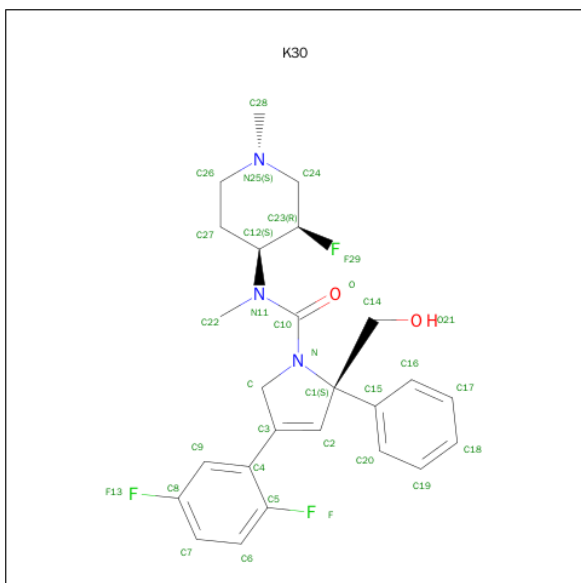
Mol	Chain	Residues	Atoms		ZeroOcc	AltConf
2	B	1	Total	Mg	0	0
			1	1		
2	A	1	Total	Mg	0	0
			1	1		

- Molecule 3 is ADENOSINE-5'-DIPHOSPHATE (three-letter code: ADP) (formula:  $C_{10}H_{15}N_5O_{10}P_2$ ).



Mol	Chain	Residues	Atoms					ZeroOcc	AltConf
3	A	1	Total	C	N	O	P	0	0
			27	10	5	10	2		
3	B	1	Total	C	N	O	P	0	0
			27	10	5	10	2		

- Molecule 4 is (2S)-4-(2,5-DIFLUOROPHENYL)-N-[(3R,4S)-3-FLUORO-1-METHYLPIPERIDIN-4-YL]-2-(HYDROXYMETHYL)-N-METHYL-2-PHENYL-2,5-DIHYDRO-1H-PYRROLE-1-CARBOXAMIDE (three-letter code: K30) (formula: C<sub>25</sub>H<sub>28</sub>F<sub>3</sub>N<sub>3</sub>O<sub>2</sub>).



Mol	Chain	Residues	Atoms					ZeroOcc	AltConf
4	A	1	Total	C	F	N	O	0	0
			33	25	3	3	2		
4	B	1	Total	C	F	N	O	0	0
			33	25	3	3	2		

- Molecule 5 is water.

Mol	Chain	Residues	Atoms		ZeroOcc	AltConf
5	A	178	Total	O	0	0
			178	178		
5	B	145	Total	O	0	0
			145	145		



A334	S337	P338	A339	S340	L341	M342	L343	L347	S348	T349	L350	H354	K357	M358	L359	L360	M361	K362	PRO	GLU	VAL	ASN	GLN	LYS
------	------	------	------	------	------	------	------	------	------	------	------	------	------	------	------	------	------	------	-----	-----	-----	-----	-----	-----

## 4 Data and refinement statistics

Property	Value	Source
Space group	P 21 21 21	Depositor
Cell constants a, b, c, $\alpha$ , $\beta$ , $\gamma$	68.76 Å 79.37 Å 158.85 Å 90.00° 90.00° 90.00°	Depositor
Resolution (Å)	50.00 – 2.28 29.32 – 2.28	Depositor EDS
% Data completeness (in resolution range)	75.7 (50.00-2.28) 75.9 (29.32-2.28)	Depositor EDS
$R_{merge}$	(Not available)	Depositor
$R_{sym}$	0.10	Depositor
$\langle I/\sigma(I) \rangle$ <sup>1</sup>	1.53 (at 2.29 Å)	Xtriage
Refinement program	BUSTER-TNT 2.1.1	Depositor
R, $R_{free}$	0.181 , 0.261 0.186 , 0.269	Depositor DCC
$R_{free}$ test set	1527 reflections (5.23%)	DCC
Wilson B-factor (Å <sup>2</sup> )	34.7	Xtriage
Anisotropy	0.130	Xtriage
Bulk solvent $k_{sol}$ (e/Å <sup>3</sup> ), $B_{sol}$ (Å <sup>2</sup> )	0.32 , 69.6	EDS
Estimated twinning fraction	No twinning to report.	Xtriage
L-test for twinning <sup>2</sup>	$\langle  L  \rangle = 0.47$ , $\langle L^2 \rangle = 0.30$	Xtriage
Outliers	0 of 30723 reflections	Xtriage
$F_o, F_c$ correlation	0.96	EDS
Total number of atoms	5633	wwPDB-VP
Average B, all atoms (Å <sup>2</sup> )	42.0	wwPDB-VP

Xtriage's analysis on translational NCS is as follows: *The analyses of the Patterson function reveals a significant off-origin peak that is 42.51 % of the origin peak, indicating pseudo translational symmetry. The chance of finding a peak of this or larger height randomly in a structure without pseudo translational symmetry is equal to 2.0182e-04. The detected translational NCS is most likely also responsible for the elevated intensity ratio.*

<sup>1</sup> Intensities estimated from amplitudes.

<sup>2</sup> Theoretical values of  $\langle |L| \rangle$ ,  $\langle L^2 \rangle$  for acentric reflections are 0.5, 0.375 respectively for untwinned datasets, and 0.333, 0.2 for perfectly twinned datasets.

## 5 Model quality [i](#)

### 5.1 Standard geometry [i](#)

Bond lengths and bond angles in the following residue types are not validated in this section: MG, K30, ADP

The Z score for a bond length (or angle) is the number of standard deviations the observed value is removed from the expected value. A bond length (or angle) with  $|Z| > 5$  is considered an outlier worth inspection. RMSZ is the root-mean-square of all Z scores of the bond lengths (or angles).

Mol	Chain	Bond lengths		Bond angles	
		RMSZ	$\# Z  > 5$	RMSZ	$\# Z  > 5$
1	A	0.66	0/2632	0.83	1/3559 (0.0%)
1	B	0.64	0/2632	0.84	1/3559 (0.0%)
All	All	0.65	0/5264	0.84	2/7118 (0.0%)

There are no bond length outliers.

All (2) bond angle outliers are listed below:

Mol	Chain	Res	Type	Atoms	Z	Observed(°)	Ideal(°)
1	B	263	LEU	CA-CB-CG	-5.58	102.46	115.30
1	A	293	LEU	CB-CG-CD1	5.07	119.62	111.00

There are no chirality outliers.

There are no planarity outliers.

### 5.2 Too-close contacts [i](#)

In the following table, the Non-H and H(model) columns list the number of non-hydrogen atoms and hydrogen atoms in the chain respectively. The H(added) column lists the number of hydrogen atoms added and optimized by MolProbity. The Clashes column lists the number of clashes within the asymmetric unit, whereas Symm-Clashes lists symmetry related clashes.

Mol	Chain	Non-H	H(model)	H(added)	Clashes	Symm-Clashes
1	A	2594	0	2617	103	0
1	B	2594	0	2617	157	0
2	A	1	0	0	0	0
2	B	1	0	0	0	0
3	A	27	0	12	0	0
3	B	27	0	12	0	0
4	A	33	0	28	2	0

*Continued on next page...*



*Continued from previous page...*

Mol	Chain	Non-H	H(model)	H(added)	Clashes	Symm-Clashes
4	B	33	0	28	5	0
5	A	178	0	0	5	0
5	B	145	0	0	16	0
All	All	5633	0	5314	261	0

The all-atom clashscore is defined as the number of clashes found per 1000 atoms (including hydrogen atoms). The all-atom clashscore for this structure is 25.

The worst 5 of 261 close contacts within the same asymmetric unit are listed below, sorted by their clash magnitude.

Atom-1	Atom-2	Interatomic distance (Å)	Clash overlap (Å)
1:B:49:GLU:HG3	1:B:67:THR:HG22	1.20	1.08
1:A:54:THR:HG21	1:A:64:LYS:HG3	1.33	1.06
1:B:40:ILE:HD13	1:B:340:SER:HA	1.40	1.00
1:A:318:ARG:HH11	1:A:318:ARG:HG2	1.23	1.00
1:B:190:ASN:HB2	1:B:192:ARG:HH12	1.34	0.90

There are no symmetry-related clashes.

## 5.3 Torsion angles [i](#)

### 5.3.1 Protein backbone [i](#)

In the following table, the Percentiles column shows the percent Ramachandran outliers of the chain as a percentile score with respect to all X-ray entries followed by that with respect to entries of similar resolution.

The Analysed column shows the number of residues for which the backbone conformation was analysed, and the total number of residues.

Mol	Chain	Analysed	Favoured	Allowed	Outliers	Percentiles	
1	A	326/367 (89%)	302 (93%)	17 (5%)	7 (2%)	9	6
1	B	326/367 (89%)	310 (95%)	12 (4%)	4 (1%)	16	15
All	All	652/734 (89%)	612 (94%)	29 (4%)	11 (2%)	11	9

5 of 11 Ramachandran outliers are listed below:

Mol	Chain	Res	Type
1	A	146	LYS

*Continued on next page...*

*Continued from previous page...*

Mol	Chain	Res	Type
1	A	179	SER
1	B	30	LEU
1	B	189	ARG
1	A	145	GLU

### 5.3.2 Protein sidechains ⓘ

In the following table, the Percentiles column shows the percent sidechain outliers of the chain as a percentile score with respect to all X-ray entries followed by that with respect to entries of similar resolution.

The Analysed column shows the number of residues for which the sidechain conformation was analysed, and the total number of residues.

Mol	Chain	Analysed	Rotameric	Outliers	Percentiles	
1	A	293/321 (91%)	246 (84%)	47 (16%)	3	2
1	B	293/321 (91%)	241 (82%)	52 (18%)	2	2
All	All	586/642 (91%)	487 (83%)	99 (17%)	2	2

5 of 99 residues with a non-rotameric sidechain are listed below:

Mol	Chain	Res	Type
1	A	360	LEU
1	B	51	SER
1	B	341	LEU
1	A	362	LYS
1	B	34	LYS

Some sidechains can be flipped to improve hydrogen bonding and reduce clashes. 5 of 28 such sidechains are listed below:

Mol	Chain	Res	Type
1	A	361	ASN
1	B	142	GLN
1	B	342	ASN
1	B	78	GLN
1	B	141	HIS

### 5.3.3 RNA ⓘ

There are no RNA molecules in this entry.

## 5.4 Non-standard residues in protein, DNA, RNA chains ⓘ

There are no non-standard protein/DNA/RNA residues in this entry.

## 5.5 Carbohydrates ⓘ

There are no carbohydrates in this entry.

## 5.6 Ligand geometry ⓘ

Of 6 ligands modelled in this entry, 2 are monoatomic - leaving 4 for Mogul analysis.

In the following table, the Counts columns list the number of bonds (or angles) for which Mogul statistics could be retrieved, the number of bonds (or angles) that are observed in the model and the number of bonds (or angles) that are defined in the chemical component dictionary. The Link column lists molecule types, if any, to which the group is linked. The Z score for a bond length (or angle) is the number of standard deviations the observed value is removed from the expected value. A bond length (or angle) with  $|Z| > 2$  is considered an outlier worth inspection. RMSZ is the root-mean-square of all Z scores of the bond lengths (or angles).

Mol	Type	Chain	Res	Link	Bond lengths			Bond angles		
					Counts	RMSZ	# $ Z  > 2$	Counts	RMSZ	# $ Z  > 2$
4	K30	A	1	-	30,36,36	2.60	10 (33%)	34,53,53	2.45	13 (38%)
3	ADP	A	601	2	22,29,29	2.41	5 (22%)	27,45,45	2.58	13 (48%)
3	ADP	B	600	2	22,29,29	2.32	7 (31%)	27,45,45	1.75	9 (33%)
4	K30	B	603	-	30,36,36	2.49	12 (40%)	34,53,53	2.47	18 (52%)

In the following table, the Chirals column lists the number of chiral outliers, the number of chiral centers analysed, the number of these observed in the model and the number defined in the chemical component dictionary. Similar counts are reported in the Torsion and Rings columns. '-' means no outliers of that kind were identified.

Mol	Type	Chain	Res	Link	Chirals	Torsions	Rings
4	K30	A	1	-	-	0/24/53/53	0/4/4/4
3	ADP	A	601	2	-	0/12/32/32	0/3/3/3
3	ADP	B	600	2	-	0/12/32/32	0/3/3/3
4	K30	B	603	-	-	0/24/53/53	0/4/4/4

The worst 5 of 34 bond length outliers are listed below:

Mol	Chain	Res	Type	Atoms	Z	Observed(Å)	Ideal(Å)
4	A	1	K30	C4-C3	-4.92	1.43	1.49
4	B	603	K30	C-C3	-4.05	1.43	1.50

*Continued on next page...*

*Continued from previous page...*

Mol	Chain	Res	Type	Atoms	Z	Observed(Å)	Ideal(Å)
3	B	600	ADP	C8-N7	-3.12	1.28	1.34
3	B	600	ADP	PB-O3B	-2.69	1.45	1.54
3	A	601	ADP	C8-N7	-2.59	1.29	1.34

The worst 5 of 53 bond angle outliers are listed below:

Mol	Chain	Res	Type	Atoms	Z	Observed(°)	Ideal(°)
3	A	601	ADP	N3-C2-N1	-6.66	123.80	128.89
4	A	1	K30	C23-C24-N25	-6.42	104.04	111.40
4	B	603	K30	C23-C24-N25	-5.63	104.94	111.40
4	B	603	K30	C24-C23-C12	-4.49	107.65	112.06
4	B	603	K30	O-C10-N	-3.86	115.06	123.66

There are no chirality outliers.

There are no torsion outliers.

There are no ring outliers.

2 monomers are involved in 7 short contacts:

Mol	Chain	Res	Type	Clashes	Symm-Clashes
4	A	1	K30	2	0
4	B	603	K30	5	0

## 5.7 Other polymers [i](#)

There are no such residues in this entry.

## 5.8 Polymer linkage issues [i](#)

There are no chain breaks in this entry.

## 6 Fit of model and data [i](#)

### 6.1 Protein, DNA and RNA chains [i](#)

In the following table, the column labelled ‘#RSRZ> 2’ contains the number (and percentage) of RSRZ outliers, followed by percent RSRZ outliers for the chain as percentile scores relative to all X-ray entries and entries of similar resolution. The OWAB column contains the minimum, median, 95<sup>th</sup> percentile and maximum values of the occupancy-weighted average B-factor per residue. The column labelled ‘Q< 0.9’ lists the number of (and percentage) of residues with an average occupancy less than 0.9.

Mol	Chain	Analysed	<RSRZ>	#RSRZ>2	OWAB(Å <sup>2</sup> )	Q<0.9
1	A	330/367 (89%)	0.18	30 (9%) 11 16	19, 36, 82, 98	0
1	B	330/367 (89%)	-0.01	16 (4%) 34 42	21, 39, 76, 109	0
All	All	660/734 (89%)	0.09	46 (6%) 19 25	19, 37, 80, 109	0

The worst 5 of 46 RSRZ outliers are listed below:

Mol	Chain	Res	Type	RSRZ
1	A	34	LYS	7.5
1	A	250	ILE	7.4
1	A	249	THR	6.2
1	A	57	LEU	5.9
1	A	251	ASP	5.8

### 6.2 Non-standard residues in protein, DNA, RNA chains [i](#)

There are no non-standard protein/DNA/RNA residues in this entry.

### 6.3 Carbohydrates [i](#)

There are no carbohydrates in this entry.

### 6.4 Ligands [i](#)

In the following table, the Atoms column lists the number of modelled atoms in the group and the number defined in the chemical component dictionary. LLDF column lists the quality of electron density of the group with respect to its neighbouring residues in protein, DNA or RNA chains. The B-factors column lists the minimum, median, 95<sup>th</sup> percentile and maximum values of B factors of atoms in the group. The column labelled ‘Q< 0.9’ lists the number of atoms with occupancy less than 0.9.

Mol	Type	Chain	Res	Atoms	RSCC	RSR	LLDF	B-factors( $\text{\AA}^2$ )	Q<0.9
4	K30	A	1	33/33	0.95	0.14	0.20	27,35,61,66	0
4	K30	B	603	33/33	0.97	0.12	-0.22	26,45,64,64	0
3	ADP	B	600	27/27	0.98	0.10	-0.76	25,44,46,47	0
3	ADP	A	601	27/27	0.98	0.08	-1.21	27,34,35,36	0
2	MG	B	602	1/1	0.98	0.33	-	30,30,30,30	0
2	MG	A	603	1/1	0.98	0.32	-	23,23,23,23	0

## 6.5 Other polymers [i](#)

There are no such residues in this entry.