



Full wwPDB X-ray Structure Validation Report ⓘ

Jan 31, 2016 – 06:48 PM GMT

PDB ID : 1CLQ
Title : CRYSTAL STRUCTURE OF A REPLICATION FORK DNA POLYMERASE EDITING COMPLEX AT 2.7 Å RESOLUTION
Authors : Shamoo, Y.; Steitz, T.A.
Deposited on : 1999-04-30
Resolution : 2.70 Å(reported)

This is a Full wwPDB X-ray Structure Validation Report for a publicly released PDB entry.
We welcome your comments at validation@mail.wwpdb.org
A user guide is available at
<http://wwpdb.org/validation/2016/XrayValidationReportHelp>
with specific help available everywhere you see the ⓘ symbol.

The following versions of software and data (see [references ⓘ](#)) were used in the production of this report:

MolProbity : 4.02b-467
Mogul : 1.7 (RC4), CSD as536be (2015)
Xtriage (Phenix) : 1.9-1692
EDS : rb-20026688
Percentile statistics : 20151230.v01 (using entries in the PDB archive December 30th 2015)
Refmac : 5.8.0135
CCP4 : 6.5.0
Ideal geometry (proteins) : Engh & Huber (2001)
Ideal geometry (DNA, RNA) : Parkinson et al. (1996)
Validation Pipeline (wwPDB-VP) : trunk26865

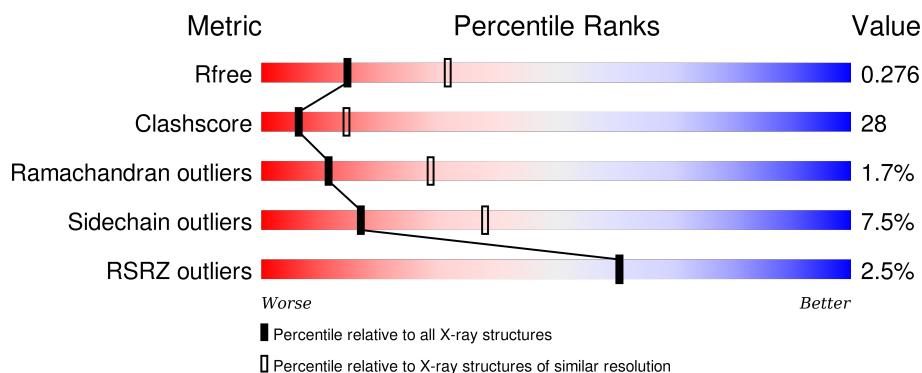
1 Overall quality at a glance

The following experimental techniques were used to determine the structure:

X-RAY DIFFRACTION

The reported resolution of this entry is 2.70 Å.

Percentile scores (ranging between 0-100) for global validation metrics of the entry are shown in the following graphic. The table shows the number of entries on which the scores are based.



Metric	Whole archive (#Entries)	Similar resolution (#Entries, resolution range(Å))
R_{free}	91344	2103 (2.70-2.70)
Clashscore	102246	2422 (2.70-2.70)
Ramachandran outliers	100387	2382 (2.70-2.70)
Sidechain outliers	100360	2382 (2.70-2.70)
RSRZ outliers	91569	2107 (2.70-2.70)

The table below summarises the geometric issues observed across the polymeric chains and their fit to the electron density. The red, orange, yellow and green segments on the lower bar indicate the fraction of residues that contain outliers for ≥ 3 , 2, 1 and 0 types of geometric quality criteria. A grey segment represents the fraction of residues that are not modelled. The numeric value for each fraction is indicated below the corresponding segment, with a dot representing fractions $\leq 5\%$. The upper red bar (where present) indicates the fraction of residues that have poor fit to the electron density. The numeric value is given above the bar.

Mol	Chain	Length	Quality of chain
1	E	11	<div> <div>18%</div> <div>91%</div> <div>9%</div> </div>
2	D	12	<div> <div>33%</div> <div>8%</div> <div>50%</div> <div>42%</div> </div>
3	A	903	<div> <div>2%</div> <div>59%</div> <div>37%</div> <div>.</div> </div>

The following table lists non-polymeric compounds, carbohydrate monomers and non-standard residues in protein, DNA, RNA chains that are outliers for geometric or electron-density-fit criteria:

Mol	Type	Chain	Res	Chirality	Geometry	Clashes	Electron density
4	CA	A	1002	-	-	-	X
5	GDP	A	999	-	-	-	X

2 Entry composition [i](#)

There are 6 unique types of molecules in this entry. The entry contains 8106 atoms, of which 0 are hydrogens and 0 are deuteriums.

In the tables below, the ZeroOcc column contains the number of atoms modelled with zero occupancy, the AltConf column contains the number of residues with at least one atom in alternate conformation and the Trace column contains the number of residues modelled with at most 2 atoms.

- Molecule 1 is a DNA chain called DNA (5'-D(*GP*CP*GP*GP*AP*AP*CP*TP*AP*CP*T)-3').

Mol	Chain	Residues	Atoms					ZeroOcc	AltConf	Trace
1	E	11	Total	C	N	O	P	0	0	0
			223	107	43	63	10			

- Molecule 2 is a DNA chain called DNA (5'-D(*AP*GP*TP*AP*GP*TP*TP*CP*CP*GP*CP*G)-3').

Mol	Chain	Residues	Atoms					ZeroOcc	AltConf	Trace
2	D	12	Total	C	N	O	P	0	0	0
			244	117	45	71	11			

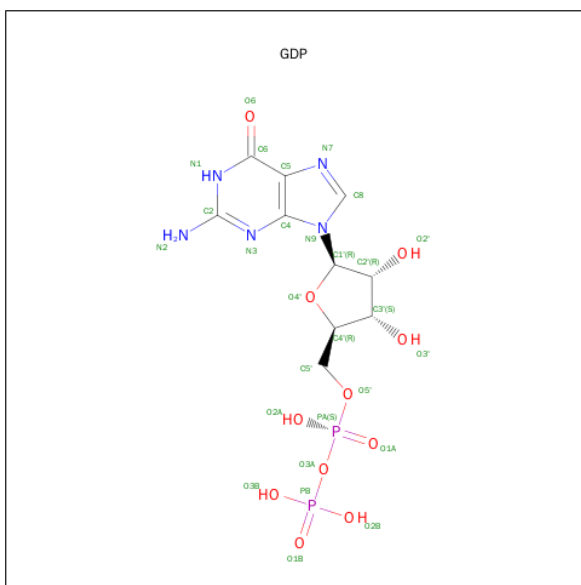
- Molecule 3 is a protein called PROTEIN (DNA POLYMERASE).

Mol	Chain	Residues	Atoms					ZeroOcc	AltConf	Trace
3	A	903	Total	C	N	O	S	0	0	0
			7381	4739	1226	1383	33			

- Molecule 4 is CALCIUM ION (three-letter code: CA) (formula: Ca).

Mol	Chain	Residues	Atoms		ZeroOcc	AltConf
4	A	6	Total	Ca	0	0
			6	6		
4	D	2	Total	Ca	0	0
			2	2		
4	E	1	Total	Ca	0	0
			1	1		

- Molecule 5 is GUANOSINE-5'-DIPHOSPHATE (three-letter code: GDP) (formula: C₁₀H₁₅N₅O₁₁P₂).



Mol	Chain	Residues	Atoms					ZeroOcc	AltConf
5	A	1	Total	C	N	O	P	0	0
			28	10	5	11	2		

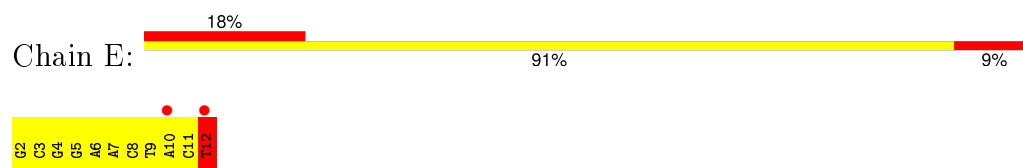
- Molecule 6 is water.

Mol	Chain	Residues	Atoms	ZeroOcc	AltConf
6	A	212	Total O 212 212	0	0
6	D	4	Total O 4 4	0	0
6	E	5	Total O 5 5	0	0

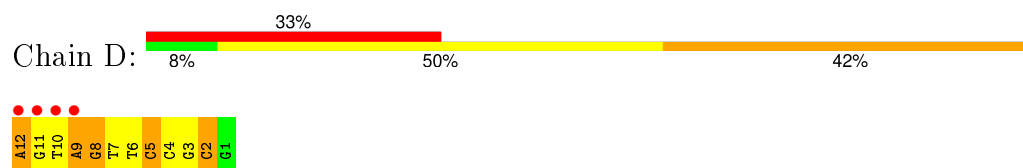
3 Residue-property plots [i](#)

These plots are drawn for all protein, RNA and DNA chains in the entry. The first graphic for a chain summarises the proportions of errors displayed in the second graphic. The second graphic shows the sequence view annotated by issues in geometry and electron density. Residues are color-coded according to the number of geometric quality criteria for which they contain at least one outlier: green = 0, yellow = 1, orange = 2 and red = 3 or more. A red dot above a residue indicates a poor fit to the electron density ($RSRZ > 2$). Stretches of 2 or more consecutive residues without any outlier are shown as a green connector. Residues present in the sample, but not in the model, are shown in grey.

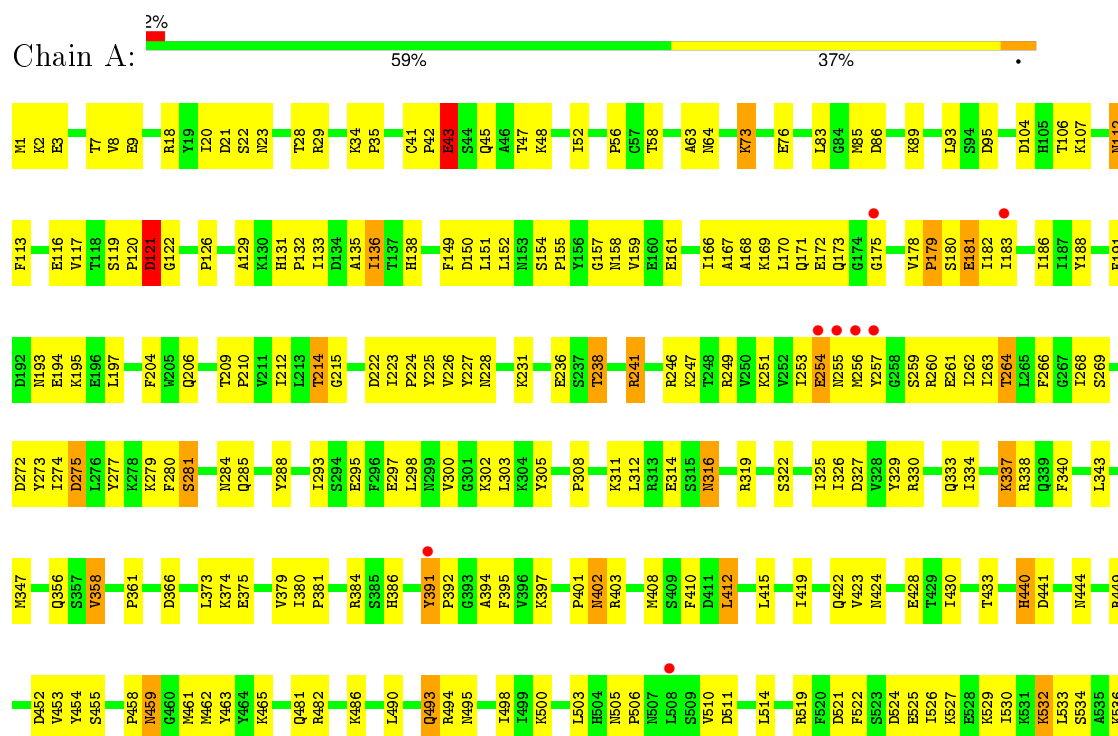
- Molecule 1: DNA (5'-D(*GP*CP*GP*GP*AP*AP*CP*TP*AP*CP*T)-3')



- Molecule 2: DNA (5'-D(*AP*GP*TP*AP*GP*TP*TP*CP*CP*GP*CP*G)-3')



- Molecule 3: PROTEIN (DNA POLYMERASE)



S537	L538																																																																																																																																																																																																																																																																																																																																																																																																																																																																																																																																																																																																																																																																																																																																																																																																																																																																																																																																																																																																																																																																																																																																																																																																																																																																																																																																																																																																																			</
------	------	--	--	--	--	--	--	--	--	--	--	--	--	--	--	--	--	--	--	--	--	--	--	--	--	--	--	--	--	--	--	--	--	--	--	--	--	--	--	--	--	--	--	--	--	--	--	--	--	--	--	--	--	--	--	--	--	--	--	--	--	--	--	--	--	--	--	--	--	--	--	--	--	--	--	--	--	--	--	--	--	--	--	--	--	--	--	--	--	--	--	--	--	--	--	--	--	--	--	--	--	--	--	--	--	--	--	--	--	--	--	--	--	--	--	--	--	--	--	--	--	--	--	--	--	--	--	--	--	--	--	--	--	--	--	--	--	--	--	--	--	--	--	--	--	--	--	--	--	--	--	--	--	--	--	--	--	--	--	--	--	--	--	--	--	--	--	--	--	--	--	--	--	--	--	--	--	--	--	--	--	--	--	--	--	--	--	--	--	--	--	--	--	--	--	--	--	--	--	--	--	--	--	--	--	--	--	--	--	--	--	--	--	--	--	--	--	--	--	--	--	--	--	--	--	--	--	--	--	--	--	--	--	--	--	--	--	--	--	--	--	--	--	--	--	--	--	--	--	--	--	--	--	--	--	--	--	--	--	--	--	--	--	--	--	--	--	--	--	--	--	--	--	--	--	--	--	--	--	--	--	--	--	--	--	--	--	--	--	--	--	--	--	--	--	--	--	--	--	--	--	--	--	--	--	--	--	--	--	--	--	--	--	--	--	--	--	--	--	--	--	--	--	--	--	--	--	--	--	--	--	--	--	--	--	--	--	--	--	--	--	--	--	--	--	--	--	--	--	--	--	--	--	--	--	--	--	--	--	--	--	--	--	--	--	--	--	--	--	--	--	--	--	--	--	--	--	--	--	--	--	--	--	--	--	--	--	--	--	--	--	--	--	--	--	--	--	--	--	--	--	--	--	--	--	--	--	--	--	--	--	--	--	--	--	--	--	--	--	--	--	--	--	--	--	--	--	--	--	--	--	--	--	--	--	--	--	--	--	--	--	--	--	--	--	--	--	--	--	--	--	--	--	--	--	--	--	--	--	--	--	--	--	--	--	--	--	--	--	--	--	--	--	--	--	--	--	--	--	--	--	--	--	--	--	--	--	--	--	--	--	--	--	--	--	--	--	--	--	--	--	--	--	--	--	--	--	--	--	--	--	--	--	--	--	--	--	--	--	--	--	--	--	--	--	--	--	--	--	--	--	--	--	--	--	--	--	--	--	--	--	--	--	--	--	--	--	--	--	--	--	--	--	--	--	--	--	--	--	--	--	--	--	--	--	--	--	--	--	--	--	--	--	--	--	--	--	--	--	--	--	--	--	--	--	--	--	--	--	--	--	--	--	--	--	--	--	--	--	--	--	--	--	--	--	--	--	--	--	--	--	--	--	--	--	--	--	--	--	--	--	--	--	--	--	--	--	--	--	--	--	--	--	--	--	--	--	--	--	--	--	--	--	--	--	--	--	--	--	--	--	--	--	--	--	--	--	--	--	--	--	--	--	--	--	--	--	--	--	--	--	--	--	--	--	--	--	--	--	--	--	--	--	--	--	--	--	--	--	--	--	--	--	--	--	--	--	--	--	--	--	--	--	--	--	--	--	--	--	--	--	--	--	--	--	--	--	--	--	--	--	--	--	--	--	--	--	--	--	--	--	--	--	--	--	--	--	--	--	--	--	--	--	--	--	--	--	--	--	--	--	--	--	--	--	--	--	--	--	--	--	--	--	--	--	--	--	--	--	--	--	--	--	--	--	--	--	--	--	--	--	--	--	--	--	--	--	--	--	--	--	--	--	--	--	--	--	--	--	--	--	--	--	--	--	--	--	--	--	--	--	--	--	--	--	--	--	--	--	--	--	--	--	--	--	--	--	--	--	--	--	--	--	--	--	--	--	--	--	--	--	--	--	--	--	--	--	--	--	--	--	--	--	--	--	--	--	--	--	--	--	--	--	--	--	--	--	--	--	--	--	--	--	--	--	--	--	--	--	--	--	--	--	--	--	--	--	--	--	--	--	--	--	--	--	--	--	--	--	--	--	--	--	--	--	--	--	--	--	--	--	--	--	--	--	--	--	--	--	--	--	--	--	--	--	--	--	--	--	--	--	--	--	--	--	--	--	--	--	--	--	--	--	--	--	--	--	--	--	--	--	--	--	--	--	--	--	--	--	--	--	--	--	--	--	--	--	--	--	--	--	--	--	--	--	--	--	--	--	--	--	--	--	--	--	--	--	--	--	--	--	--	--	--	--	--	--	--	--	--	--	--	--	--	--	--	--	--	--	--	--	--	--	--	--	--	--	--	--	--	--	--	--	--	--	--	--	--	--	--	--	--	--	--	--	--	--	--	--	--	--	--	--	--	--	--	--	--	--	--	--	--	--	--	--	--	--	--	--	--	--	--	--	--	--	--	--	--	--	--	--	--	--	--	--	--	--	--	--	--	--	--	--	--	--	--	--	--	--	--	--	--	--	--	--	--	--	--	--	--	--	--	--	--	--	--	--	--	--	--	--	--	--	--	--	--	--	--	--	--	--	--	--	--	--	--	--	--	--	--	--	--	--	--	--	--	--	--	--	--	--	--	--	--	--	--	--	--	--	--	--	--	--	--	--	--	--	--	--	--	--	--	--	--	--	--	--	--	--	--	--	--	--	--	--	--	--	--	--	--	--	--	--	--	--	--	--	--	--	--	--	--	--	--	--	--	--	--	--	--	--	--	--	--	--	--	--	--	--	--	--	--	--	--	--	--	--	--	--	--	--	--	--	--	--	--	--	--	--	--	--	--	--	--	--	--	--	--	--	--	--	--	--	--	--	--	--	--	--	--	--	--	--	--	--	--	--	--	--	--	--	--	--	--	--	--	--	--	--	--	--	--	--	--	--	--	--	--	--	--	--	--	--	--	--	--	--	--	--	--	--	--	--	--	--	--	--	--	--	--	--	--	--	--	--	--	--	--	--	--	--	--	--	--	--	--	--	--	--	--	--	--	--	--	--	--	--	--	--	--	--	--	--	--	--	--	--	--	--	--	--	--	--	--	--	--	--	--	--	--	--	--	--	--	--	--	--	--	--	--	--	--	--	----

4 Data and refinement statistics

Property	Value	Source
Space group	H 3	Depositor
Cell constants a, b, c, α , β , γ	209.74Å 209.74Å 114.25Å 90.00° 90.00° 120.00°	Depositor
Resolution (Å)	40.00 – 2.70 39.64 – 2.70	Depositor EDS
% Data completeness (in resolution range)	97.2 (40.00-2.70) 97.3 (39.64-2.70)	Depositor EDS
R_{merge}	(Not available)	Depositor
R_{sym}	0.08	Depositor
$\langle I/\sigma(I) \rangle$ ¹	4.04 (at 2.69Å)	Xtriage
Refinement program	CNS 0.4	Depositor
R, R_{free}	0.230 , 0.284 0.225 , 0.276	Depositor DCC
R_{free} test set	4877 reflections (9.75%)	DCC
Wilson B-factor (Å ²)	56.1	Xtriage
Anisotropy	0.237	Xtriage
Bulk solvent k_{sol} (e/Å ³), B_{sol} (Å ²)	0.32 , 56.3	EDS
Estimated twinning fraction	0.023 for h,-h-k,-l	Xtriage
L-test for twinning ²	$\langle L \rangle = 0.48$, $\langle L^2 \rangle = 0.31$	Xtriage
Outliers	0 of 50312 reflections	Xtriage
F_o, F_c correlation	0.93	EDS
Total number of atoms	8106	wwPDB-VP
Average B, all atoms (Å ²)	58.0	wwPDB-VP

Xtriage's analysis on translational NCS is as follows: *The largest off-origin peak in the Patterson function is 2.90% of the height of the origin peak. No significant pseudotranslation is detected.*

¹Intensities estimated from amplitudes.

²Theoretical values of $\langle |L| \rangle$, $\langle L^2 \rangle$ for acentric reflections are 0.5, 0.375 respectively for untwinned datasets, and 0.333, 0.2 for perfectly twinned datasets.

5 Model quality [i](#)

5.1 Standard geometry [i](#)

Bond lengths and bond angles in the following residue types are not validated in this section: GDP, CA

The Z score for a bond length (or angle) is the number of standard deviations the observed value is removed from the expected value. A bond length (or angle) with $|Z| > 5$ is considered an outlier worth inspection. RMSZ is the root-mean-square of all Z scores of the bond lengths (or angles).

Mol	Chain	Bond lengths		Bond angles	
		RMSZ	$\# Z > 5$	RMSZ	$\# Z > 5$
1	E	0.92	0/250	1.32	1/384 (0.3%)
2	D	1.07	2/273 (0.7%)	1.70	8/420 (1.9%)
3	A	0.43	0/7562	0.66	1/10217 (0.0%)
All	All	0.48	2/8085 (0.0%)	0.76	10/11021 (0.1%)

Chiral center outliers are detected by calculating the chiral volume of a chiral center and verifying if the center is modelled as a planar moiety or with the opposite hand. A planarity outlier is detected by checking planarity of atoms in a peptide group, atoms in a mainchain group or atoms of a sidechain that are expected to be planar.

Mol	Chain	#Chirality outliers	#Planarity outliers
1	E	0	1
3	A	0	1
All	All	0	2

All (2) bond length outliers are listed below:

Mol	Chain	Res	Type	Atoms	Z	Observed(Å)	Ideal(Å)
2	D	2	DC	N1-C2	-5.61	1.34	1.40
2	D	12	DA	N9-C4	-5.56	1.34	1.37

All (10) bond angle outliers are listed below:

Mol	Chain	Res	Type	Atoms	Z	Observed(°)	Ideal(°)
2	D	12	DA	O4'-C1'-C2'	10.10	113.98	105.90
2	D	12	DA	O4'-C1'-N9	8.97	114.28	108.00
3	A	412	LEU	CA-CB-CG	8.55	134.96	115.30
2	D	12	DA	N9-C1'-C2'	8.07	127.94	112.60
2	D	12	DA	C8-N9-C1'	8.00	142.09	127.70
1	E	12	DT	O4'-C1'-N1	7.95	113.56	108.00

Continued on next page...

Continued from previous page...

Mol	Chain	Res	Type	Atoms	Z	Observed(°)	Ideal(°)
2	D	12	DA	C4-N9-C1'	-7.94	112.01	126.30
2	D	8	DG	O4'-C1'-C2'	5.91	110.62	105.90
2	D	9	DA	O4'-C1'-C2'	5.24	110.09	105.90
2	D	5	DC	O4'-C1'-C2'	5.20	110.06	105.90

There are no chirality outliers.

All (2) planarity outliers are listed below:

Mol	Chain	Res	Type	Group
3	A	567	TYR	Sidechain
1	E	12	DT	Sidechain

5.2 Too-close contacts

In the following table, the Non-H and H(model) columns list the number of non-hydrogen atoms and hydrogen atoms in the chain respectively. The H(added) column lists the number of hydrogen atoms added and optimized by MolProbity. The Clashes column lists the number of clashes within the asymmetric unit, whereas Symm-Clashes lists symmetry related clashes.

Mol	Chain	Non-H	H(model)	H(added)	Clashes	Symm-Clashes
1	E	223	0	125	34	0
2	D	244	0	137	45	0
3	A	7381	0	7265	360	0
4	A	6	0	0	0	0
4	D	2	0	0	0	0
4	E	1	0	0	0	0
5	A	28	0	12	3	0
6	A	212	0	0	6	0
6	D	4	0	0	0	0
6	E	5	0	0	0	0
All	All	8106	0	7539	425	0

The all-atom clashscore is defined as the number of clashes found per 1000 atoms (including hydrogen atoms). The all-atom clashscore for this structure is 28.

All (425) close contacts within the same asymmetric unit are listed below, sorted by their clash magnitude.

Atom-1	Atom-2	Interatomic distance (Å)	Clash overlap (Å)
2:D:6:DT:H2''	2:D:5:DC:C5'	1.49	1.40

Continued on next page...

Continued from previous page...

Atom-1	Atom-2	Interatomic distance (Å)	Clash overlap (Å)
1:E:8:DC:N4	2:D:8:DG:H1	1.41	1.19
2:D:6:DT:H2''	2:D:5:DC:H5''	1.31	1.11
2:D:3:DG:H2''	2:D:2:DC:H5''	1.28	1.09
2:D:6:DT:H2''	2:D:5:DC:H5'	1.10	1.07
3:A:402:ASN:ND2	3:A:403:ARG:H	1.55	1.02
2:D:7:DT:H2''	2:D:6:DT:H5''	1.43	1.00
1:E:4:DG:H1'	1:E:5:DG:H5''	1.43	0.99
2:D:3:DG:H2''	2:D:2:DC:C5'	1.93	0.98
2:D:6:DT:C2'	2:D:5:DC:C5'	2.43	0.96
3:A:422:GLN:HG3	3:A:678:GLN:O	1.67	0.94
3:A:402:ASN:HD22	3:A:403:ARG:H	0.98	0.92
3:A:1:MET:HG2	3:A:2:LYS:H	1.35	0.91
1:E:2:DG:H2''	1:E:3:DC:H5'	1.49	0.91
3:A:402:ASN:HD22	3:A:403:ARG:N	1.70	0.89
2:D:6:DT:C2'	2:D:5:DC:H5''	2.03	0.88
2:D:6:DT:C2'	2:D:5:DC:H5'	2.02	0.88
3:A:277:TYR:O	3:A:281:SER:HB2	1.74	0.88
1:E:2:DG:O5'	3:A:255:ASN:N	2.07	0.88
3:A:316:ASN:HD21	3:A:319:ARG:H	1.22	0.88
1:E:11:DC:H4'	1:E:12:DT:OP1	1.73	0.87
3:A:224:PRO:HA	3:A:263:ILE:HD12	1.55	0.86
3:A:422:GLN:HE21	3:A:680:LEU:H	1.24	0.84
3:A:830:VAL:HG11	3:A:847:ALA:HB1	1.60	0.83
2:D:10:DT:H1'	2:D:9:DA:H5''	1.62	0.82
3:A:8:VAL:HG21	3:A:93:LEU:HD11	1.63	0.81
1:E:3:DC:H2'	1:E:3:DC:O2	1.80	0.81
3:A:126:PRO:HA	3:A:225:TYR:HD1	1.44	0.81
3:A:47:THR:HG22	3:A:48:LYS:N	1.96	0.81
2:D:11:DG:H2''	2:D:10:DT:O5'	1.79	0.81
3:A:606:ASN:OD1	3:A:614:GLU:HB3	1.81	0.80
3:A:392:PRO:O	3:A:587:THR:HG21	1.83	0.79
3:A:825:VAL:O	3:A:828:GLU:HG2	1.81	0.79
3:A:136:ILE:CG2	3:A:149:PHE:HB2	2.12	0.79
3:A:179:PRO:O	3:A:182:ILE:HG22	1.83	0.79
3:A:254:GLU:OE1	3:A:259:SER:HB2	1.83	0.79
3:A:524:ASP:HA	3:A:527:LYS:HD3	1.65	0.78
3:A:785:ALA:HB2	3:A:808:ILE:HD12	1.66	0.77
3:A:785:ALA:HB1	3:A:788:ILE:CG2	2.15	0.77
2:D:3:DG:C2'	2:D:2:DC:C5'	2.64	0.76
3:A:808:ILE:HG23	3:A:824:VAL:HG11	1.65	0.76
3:A:641:PHE:HD1	3:A:646:HIS:HD1	1.32	0.74

Continued on next page...

Continued from previous page...

Atom-1	Atom-2	Interatomic distance (Å)	Clash overlap (Å)
3:A:316:ASN:ND2	3:A:319:ARG:HB3	2.02	0.74
3:A:136:ILE:HG23	3:A:149:PHE:HB2	1.69	0.73
2:D:8:DG:H2''	2:D:7:DT:OP1	1.87	0.73
3:A:788:ILE:HG22	3:A:805:ILE:HD12	1.70	0.73
2:D:12:DA:H2''	2:D:11:DG:C8	2.24	0.73
3:A:322:SER:O	3:A:326:ILE:HG12	1.88	0.73
1:E:4:DG:C1'	1:E:5:DG:H5''	2.18	0.71
3:A:481:GLN:NE2	3:A:559:ARG:HH11	1.88	0.70
2:D:10:DT:H2''	2:D:9:DA:C5'	2.21	0.70
3:A:47:THR:HG22	3:A:48:LYS:H	1.54	0.70
3:A:303:LEU:HD11	3:A:326:ILE:HG21	1.72	0.70
1:E:12:DT:O4	2:D:12:DA:N1	2.25	0.70
3:A:663:ILE:HD13	3:A:683:MET:HE2	1.74	0.69
3:A:150:ASP:HB3	3:A:188:TYR:HE1	1.56	0.69
2:D:10:DT:H2''	2:D:9:DA:H5'	1.73	0.69
3:A:581:ARG:HH11	3:A:581:ARG:HG3	1.57	0.69
3:A:316:ASN:HD21	3:A:319:ARG:N	1.89	0.69
3:A:830:VAL:CG1	3:A:847:ALA:HB1	2.21	0.69
1:E:4:DG:H2''	1:E:5:DG:H5'	1.75	0.69
3:A:126:PRO:HA	3:A:225:TYR:CD1	2.28	0.69
3:A:253:ILE:C	3:A:254:GLU:HG2	2.12	0.68
3:A:180:SER:HA	3:A:183:ILE:CD1	2.23	0.68
2:D:12:DA:H2''	2:D:11:DG:N7	2.08	0.68
2:D:5:DC:H2''	2:D:4:DC:C6	2.27	0.68
2:D:7:DT:H5''	2:D:7:DT:H6	1.57	0.68
3:A:104:ASP:OD1	3:A:106:THR:HG22	1.93	0.68
3:A:655:ALA:HA	3:A:659:MET:HB2	1.75	0.68
3:A:514:LEU:HD11	3:A:533:LEU:HD21	1.74	0.68
3:A:830:VAL:HG13	3:A:848:TRP:O	1.94	0.68
3:A:724:LYS:HB3	3:A:724:LYS:NZ	2.09	0.66
2:D:3:DG:C2'	2:D:2:DC:H5'	2.26	0.66
3:A:775:ASN:OD1	3:A:777:ILE:HG23	1.96	0.66
3:A:410:PHE:CZ	3:A:659:MET:HG2	2.30	0.66
3:A:897:LEU:O	3:A:900:MET:HG3	1.96	0.66
3:A:636:VAL:O	3:A:636:VAL:HG12	1.95	0.66
3:A:455:SER:HA	3:A:675:ASN:O	1.96	0.66
3:A:83:LEU:HD12	3:A:83:LEU:H	1.60	0.66
1:E:10:DA:H4'	1:E:11:DC:OP1	1.96	0.65
3:A:494:ARG:NH1	3:A:521:ASP:OD1	2.28	0.65
3:A:621:ASP:HB2	3:A:624:SER:HB2	1.77	0.65
3:A:402:ASN:ND2	3:A:403:ARG:N	2.34	0.65

Continued on next page...

Continued from previous page...

Atom-1	Atom-2	Interatomic distance (Å)	Clash overlap (Å)
3:A:227:TYR:CD2	3:A:263:ILE:HD13	2.31	0.65
3:A:873:GLU:HG2	3:A:877:ILE:HD12	1.77	0.65
3:A:73:LYS:O	3:A:73:LYS:HE2	1.95	0.65
3:A:181:GLU:N	3:A:181:GLU:OE1	2.27	0.65
3:A:149:PHE:HB3	3:A:197:LEU:HD21	1.79	0.65
3:A:206:GLN:NE2	3:A:246:ARG:HH12	1.93	0.65
3:A:347:MET:CE	3:A:358:VAL:HG22	2.27	0.64
3:A:169:LYS:HE3	6:A:1154:HOH:O	1.96	0.64
3:A:737:THR:HG23	3:A:875:THR:HB	1.79	0.64
3:A:707:ARG:HG2	3:A:729:GLY:O	1.98	0.64
3:A:731:GLU:HG2	3:A:734:LYS:NZ	2.13	0.64
3:A:223:ILE:HB	3:A:224:PRO:HD3	1.79	0.64
2:D:11:DG:H1'	2:D:10:DT:H5'	1.80	0.64
1:E:4:DG:H1'	1:E:5:DG:C5'	2.26	0.64
3:A:800:LYS:NZ	3:A:800:LYS:HB2	2.12	0.64
3:A:453:VAL:HG23	3:A:454:TYR:CD2	2.33	0.64
3:A:152:LEU:HB2	3:A:191:PHE:O	1.98	0.64
1:E:4:DG:H2''	1:E:5:DG:C5'	2.28	0.63
3:A:180:SER:HA	3:A:183:ILE:HD11	1.80	0.63
3:A:612:GLU:OE1	3:A:612:GLU:HA	1.99	0.63
3:A:621:ASP:HB3	3:A:624:SER:H	1.64	0.62
1:E:2:DG:C2'	1:E:3:DC:H5'	2.25	0.62
3:A:785:ALA:HB2	3:A:808:ILE:CD1	2.29	0.62
2:D:5:DC:H2''	2:D:4:DC:C5	2.35	0.62
1:E:9:DT:H2''	1:E:10:DA:O5'	2.00	0.62
3:A:83:LEU:HD12	3:A:83:LEU:N	2.15	0.62
3:A:394:ALA:HB1	3:A:622:THR:OG1	1.99	0.61
1:E:5:DG:N2	1:E:6:DA:C2	2.69	0.61
3:A:316:ASN:HD21	3:A:319:ARG:HB3	1.65	0.61
3:A:171:GLN:C	3:A:173:GLN:H	2.03	0.61
3:A:380:ILE:HG12	5:A:999:GDP:O6	2.00	0.61
3:A:117:VAL:HG13	3:A:132:PRO:O	2.00	0.61
2:D:10:DT:C1'	2:D:9:DA:H5''	2.30	0.61
3:A:316:ASN:C	3:A:316:ASN:HD22	2.04	0.61
3:A:298:LEU:O	3:A:300:VAL:HG23	2.00	0.61
3:A:257:TYR:CD1	3:A:787:ASN:ND2	2.58	0.60
3:A:830:VAL:HG12	3:A:831:TYR:N	2.16	0.60
3:A:410:PHE:CE2	3:A:685:ARG:HB2	2.35	0.60
3:A:459:ASN:HD22	3:A:459:ASN:N	1.97	0.60
1:E:12:DT:O4	2:D:12:DA:C6	2.54	0.60
3:A:731:GLU:HG2	3:A:734:LYS:HZ2	1.66	0.60

Continued on next page...

Continued from previous page...

Atom-1	Atom-2	Interatomic distance (Å)	Clash overlap (Å)
3:A:391:TYR:HB2	3:A:392:PRO:HD2	1.82	0.60
3:A:830:VAL:CG1	3:A:831:TYR:N	2.65	0.60
3:A:542:LEU:HD21	3:A:546:GLN:OE1	2.02	0.60
3:A:297:GLU:OE2	3:A:338:ARG:NH1	2.32	0.60
1:E:6:DA:H2''	1:E:7:DA:O5'	2.01	0.60
3:A:152:LEU:HD11	3:A:161:GLU:HG2	1.84	0.60
3:A:461:MET:CE	3:A:581:ARG:HD2	2.32	0.60
3:A:48:LYS:NZ	5:A:999:GDP:O1B	2.25	0.59
3:A:206:GLN:NE2	3:A:241:ARG:O	2.35	0.59
3:A:254:GLU:HB3	3:A:259:SER:CB	2.31	0.59
3:A:785:ALA:HB1	3:A:788:ILE:HG21	1.85	0.59
3:A:788:ILE:HG22	3:A:805:ILE:CD1	2.32	0.59
3:A:422:GLN:HE22	3:A:681:MET:HG2	1.68	0.59
3:A:597:ILE:HD11	3:A:663:ILE:HG23	1.84	0.59
3:A:897:LEU:O	3:A:900:MET:CG	2.50	0.59
3:A:279:LYS:HE3	6:A:1111:HOH:O	2.02	0.59
3:A:542:LEU:C	3:A:542:LEU:HD23	2.23	0.58
3:A:542:LEU:O	3:A:542:LEU:HD23	2.03	0.58
3:A:361:PRO:HD2	6:A:1036:HOH:O	2.03	0.58
3:A:104:ASP:CG	3:A:106:THR:HG22	2.24	0.58
3:A:272:ASP:OD1	3:A:274:ILE:HG22	2.04	0.58
3:A:257:TYR:O	3:A:257:TYR:CD1	2.56	0.58
3:A:214:THR:HG23	3:A:215:GLY:N	2.18	0.58
3:A:347:MET:HE1	3:A:358:VAL:HG22	1.86	0.57
3:A:157:GLY:C	3:A:158:ASN:HD22	2.07	0.57
3:A:852:THR:HG22	3:A:853:GLU:H	1.69	0.57
3:A:116:GLU:HB2	3:A:135:ALA:HB3	1.86	0.57
3:A:330:ARG:HH11	3:A:330:ARG:HG3	1.69	0.57
3:A:366:ASP:OD1	3:A:576:ARG:NH1	2.37	0.57
3:A:721:ALA:HB3	6:A:1077:HOH:O	2.04	0.57
3:A:206:GLN:OE1	3:A:206:GLN:HA	2.04	0.57
3:A:316:ASN:ND2	3:A:316:ASN:C	2.58	0.57
3:A:776:TYR:H	3:A:776:TYR:HD1	1.53	0.57
3:A:459:ASN:HD22	3:A:459:ASN:H	1.51	0.57
3:A:251:LYS:HD3	3:A:262:ILE:HD11	1.86	0.57
3:A:510:VAL:HG23	3:A:510:VAL:O	2.05	0.57
3:A:28:THR:HG22	3:A:29:ARG:N	2.19	0.57
3:A:872:LEU:HD22	3:A:877:ILE:HD11	1.86	0.56
3:A:1:MET:HG2	3:A:2:LYS:N	2.13	0.56
3:A:458:PRO:HG3	3:A:592:MET:SD	2.45	0.56
3:A:129:ALA:HA	3:A:225:TYR:CE1	2.41	0.56

Continued on next page...

Continued from previous page...

Atom-1	Atom-2	Interatomic distance (Å)	Clash overlap (Å)
3:A:73:LYS:O	3:A:76:GLU:HB3	2.04	0.56
3:A:737:THR:HG22	3:A:741:VAL:HB	1.87	0.56
3:A:288:TYR:HA	3:A:293:ILE:HD13	1.86	0.56
3:A:713:TRP:CZ3	3:A:723:PRO:HD3	2.40	0.56
1:E:3:DC:O2	1:E:3:DC:C2'	2.53	0.56
3:A:255:ASN:O	3:A:255:ASN:OD1	2.23	0.56
3:A:197:LEU:C	3:A:197:LEU:HD13	2.26	0.56
3:A:191:PHE:CD1	3:A:197:LEU:HD23	2.40	0.56
3:A:533:LEU:HB2	3:A:538:LEU:HD13	1.87	0.56
3:A:403:ARG:HH21	3:A:698:ILE:HG22	1.70	0.56
3:A:241:ARG:CB	3:A:241:ARG:HH11	2.20	0.55
3:A:337:LYS:HG3	3:A:338:ARG:N	2.21	0.55
3:A:312:LEU:HD12	3:A:312:LEU:O	2.07	0.55
3:A:300:VAL:CG1	3:A:330:ARG:NH2	2.70	0.55
3:A:808:ILE:HD13	3:A:824:VAL:HG21	1.89	0.55
3:A:175:GLY:O	3:A:319:ARG:NH2	2.40	0.54
3:A:700:GLY:HA2	3:A:753:LEU:HD22	1.89	0.54
3:A:461:MET:HE1	3:A:581:ARG:HD2	1.89	0.54
3:A:555:ALA:O	3:A:559:ARG:HG2	2.07	0.54
3:A:21:ASP:OD1	3:A:23:ASN:N	2.32	0.54
3:A:876:PHE:O	3:A:880:LEU:HB2	2.07	0.54
3:A:698:ILE:HG12	3:A:752:MET:O	2.08	0.54
3:A:21:ASP:OD1	3:A:22:SER:N	2.41	0.54
2:D:10:DT:C2'	2:D:9:DA:H5''	2.37	0.54
3:A:347:MET:HE2	3:A:358:VAL:HG22	1.90	0.54
3:A:305:TYR:CD1	3:A:312:LEU:HD22	2.43	0.54
3:A:206:GLN:NE2	3:A:246:ARG:NH1	2.56	0.53
3:A:171:GLN:O	3:A:173:GLN:N	2.41	0.53
3:A:247:LYS:O	3:A:266:PHE:HB2	2.09	0.53
3:A:241:ARG:HB3	3:A:241:ARG:HH11	1.74	0.53
3:A:222:ASP:O	3:A:226:VAL:HG23	2.09	0.53
2:D:11:DG:C8	2:D:10:DT:H72	2.44	0.53
3:A:852:THR:HG22	3:A:853:GLU:N	2.24	0.53
3:A:89:LYS:HB2	3:A:89:LYS:NZ	2.24	0.53
3:A:149:PHE:HB3	3:A:197:LEU:CD2	2.39	0.52
3:A:249:ARG:O	3:A:264:THR:HG23	2.10	0.52
3:A:700:GLY:HA2	3:A:753:LEU:CD2	2.40	0.52
1:E:2:DG:HO5'	3:A:255:ASN:N	2.04	0.52
3:A:511:ASP:OD2	3:A:533:LEU:HA	2.09	0.52
3:A:855:THR:HB	3:A:857:LEU:HB2	1.92	0.52
3:A:786:ASN:OD1	3:A:827:GLY:HA2	2.10	0.52

Continued on next page...

Continued from previous page...

Atom-1	Atom-2	Interatomic distance (Å)	Clash overlap (Å)
3:A:786:ASN:HA	3:A:826:GLU:OE2	2.10	0.52
3:A:193:ASN:OD1	3:A:194:GLU:N	2.43	0.52
3:A:408:MET:HE2	3:A:685:ARG:HG3	1.92	0.51
2:D:6:DT:C1'	2:D:5:DC:H5''	2.41	0.51
3:A:178:VAL:HA	3:A:326:ILE:HD11	1.91	0.51
3:A:300:VAL:HG12	3:A:330:ARG:NH2	2.26	0.51
3:A:288:TYR:HA	3:A:293:ILE:CD1	2.41	0.51
3:A:825:VAL:HB	3:A:828:GLU:CG	2.41	0.51
3:A:644:THR:HB	3:A:693:LEU:H	1.76	0.51
3:A:401:PRO:O	3:A:402:ASN:HB2	2.11	0.51
1:E:5:DG:H2''	1:E:6:DA:C8	2.46	0.51
3:A:764:PHE:CE1	3:A:876:PHE:HE2	2.28	0.51
3:A:85:MET:HA	3:A:380:ILE:HD11	1.93	0.51
3:A:42:PRO:HG2	3:A:45:GLN:HG2	1.93	0.50
3:A:458:PRO:HB2	3:A:588:THR:HG22	1.94	0.50
3:A:747:GLU:O	3:A:751:ARG:HG3	2.12	0.50
1:E:3:DC:H2''	1:E:4:DG:C8	2.46	0.50
2:D:10:DT:C2'	2:D:9:DA:C5'	2.88	0.50
3:A:514:LEU:HD12	3:A:514:LEU:N	2.26	0.50
3:A:490:LEU:O	3:A:494:ARG:HB2	2.12	0.50
3:A:255:ASN:O	3:A:257:TYR:N	2.45	0.50
3:A:503:LEU:HD23	3:A:538:LEU:HD23	1.93	0.50
3:A:872:LEU:O	3:A:872:LEU:HD23	2.12	0.50
3:A:493:GLN:HB2	3:A:549:GLU:CD	2.32	0.49
3:A:495:ASN:HB3	3:A:522:PHE:CE2	2.47	0.49
1:E:4:DG:C2'	1:E:5:DG:C5'	2.90	0.49
3:A:347:MET:HG3	3:A:558:ASN:OD1	2.13	0.49
3:A:878:LYS:N	3:A:879:PRO:HD2	2.28	0.49
3:A:602:ASN:OD1	3:A:617:VAL:HG23	2.13	0.49
3:A:402:ASN:ND2	3:A:403:ARG:HG2	2.28	0.49
2:D:11:DG:C2	2:D:10:DT:C2	3.01	0.49
3:A:482:ARG:CG	3:A:559:ARG:HB2	2.42	0.49
3:A:815:ILE:CG2	3:A:815:ILE:O	2.61	0.49
3:A:384:ARG:HH11	3:A:384:ARG:HG3	1.77	0.49
3:A:440:HIS:HB3	6:A:1132:HOH:O	2.11	0.49
2:D:6:DT:H1'	2:D:5:DC:H5''	1.94	0.49
1:E:4:DG:C2'	1:E:5:DG:H5''	2.42	0.49
2:D:9:DA:H2''	2:D:8:DG:O5'	2.13	0.48
3:A:663:ILE:HD13	3:A:683:MET:CE	2.42	0.48
3:A:854:ILE:HD12	3:A:859:LYS:HG3	1.95	0.48
3:A:170:LEU:HD22	3:A:170:LEU:N	2.28	0.48

Continued on next page...

Continued from previous page...

Atom-1	Atom-2	Interatomic distance (Å)	Clash overlap (Å)
3:A:534:SER:O	3:A:538:LEU:HB2	2.13	0.48
3:A:112:ASN:HD22	3:A:112:ASN:C	2.15	0.48
3:A:227:TYR:HB3	3:A:263:ILE:HD13	1.94	0.48
3:A:231:LYS:HE3	3:A:236:GLU:HB2	1.94	0.48
3:A:316:ASN:HD21	3:A:319:ARG:CB	2.27	0.48
3:A:686:GLU:HG3	3:A:687:ALA:N	2.28	0.48
3:A:83:LEU:HB3	3:A:379:VAL:HG12	1.94	0.48
3:A:655:ALA:HA	3:A:659:MET:CB	2.42	0.48
3:A:274:ILE:HG23	3:A:275:ASP:N	2.29	0.48
3:A:166:ILE:O	3:A:168:ALA:N	2.47	0.48
1:E:5:DG:N1	2:D:5:DC:O2	2.47	0.47
3:A:685:ARG:NH2	3:A:688:ILE:HG13	2.29	0.47
3:A:440:HIS:CD2	3:A:444:ASN:ND2	2.82	0.47
2:D:3:DG:H2'	2:D:2:DC:H5'	1.95	0.47
3:A:724:LYS:HZ3	3:A:724:LYS:HB3	1.79	0.47
3:A:154:SER:HB2	3:A:155:PRO:HD2	1.96	0.47
3:A:138:HIS:CD2	3:A:204:PHE:HE2	2.33	0.47
3:A:119:SER:HA	3:A:131:HIS:CD2	2.49	0.47
1:E:2:DG:O5'	3:A:255:ASN:CG	2.53	0.47
3:A:150:ASP:HB3	3:A:188:TYR:CE1	2.45	0.47
3:A:9:GLU:HG2	3:A:266:PHE:CD2	2.49	0.47
3:A:316:ASN:ND2	3:A:319:ARG:H	2.02	0.47
3:A:329:TYR:O	3:A:333:GLN:HG3	2.14	0.47
3:A:254:GLU:HA	3:A:259:SER:HA	1.97	0.46
3:A:180:SER:C	3:A:182:ILE:H	2.17	0.46
3:A:581:ARG:NH1	3:A:581:ARG:HG3	2.28	0.46
1:E:5:DG:C6	2:D:5:DC:N3	2.84	0.46
3:A:537:SER:O	3:A:540:GLU:HB3	2.14	0.46
1:E:5:DG:O6	2:D:5:DC:N3	2.48	0.46
3:A:212:ILE:HA	3:A:269:SER:O	2.16	0.46
3:A:791:TYR:CE2	3:A:802:PRO:HD3	2.51	0.46
3:A:433:THR:N	3:A:462:MET:HE2	2.30	0.46
3:A:224:PRO:HA	3:A:263:ILE:CD1	2.37	0.46
3:A:825:VAL:C	3:A:828:GLU:HG2	2.36	0.46
3:A:494:ARG:O	3:A:498:ILE:HD13	2.15	0.46
3:A:228:ASN:ND2	3:A:261:GLU:OE1	2.41	0.46
3:A:9:GLU:HG2	3:A:266:PHE:HD2	1.81	0.46
1:E:8:DC:N4	2:D:8:DG:N1	2.21	0.46
3:A:777:ILE:O	3:A:777:ILE:HD12	2.14	0.46
3:A:702:TRP:CD1	3:A:708:TYR:HB3	2.51	0.46
3:A:47:THR:CG2	3:A:48:LYS:N	2.67	0.46

Continued on next page...

Continued from previous page...

Atom-1	Atom-2	Interatomic distance (Å)	Clash overlap (Å)
3:A:461:MET:HE3	3:A:581:ARG:HD2	1.97	0.46
3:A:775:ASN:HD21	3:A:777:ILE:HG23	1.79	0.46
3:A:776:TYR:CE2	3:A:854:ILE:HD13	2.51	0.46
3:A:440:HIS:CD2	3:A:444:ASN:HD22	2.34	0.46
3:A:391:TYR:CD1	3:A:391:TYR:N	2.85	0.45
3:A:178:VAL:HG22	3:A:326:ILE:HD11	1.98	0.45
3:A:481:GLN:HE21	3:A:559:ARG:HD2	1.82	0.45
3:A:170:LEU:H	3:A:170:LEU:CD2	2.28	0.45
3:A:120:PRO:HD2	3:A:131:HIS:NE2	2.31	0.45
3:A:34:LYS:HA	3:A:35:PRO:HD2	1.84	0.45
2:D:3:DG:OP1	3:A:288:TYR:N	2.44	0.45
3:A:151:LEU:HG	3:A:152:LEU:N	2.31	0.45
3:A:191:PHE:CD2	3:A:197:LEU:HA	2.51	0.45
3:A:193:ASN:OD1	3:A:195:LYS:N	2.50	0.45
3:A:119:SER:HA	3:A:131:HIS:HD2	1.81	0.45
3:A:638:GLU:HA	3:A:641:PHE:HD2	1.82	0.45
3:A:529:LYS:O	3:A:533:LEU:CD2	2.64	0.45
3:A:280:PHE:HB2	3:A:340:PHE:CE1	2.52	0.45
3:A:703:THR:OG1	3:A:707:ARG:HB3	2.16	0.45
3:A:262:ILE:HG13	3:A:262:ILE:O	2.17	0.45
3:A:3:GLU:HB2	3:A:20:ILE:O	2.17	0.45
1:E:3:DC:O2	1:E:4:DG:C5	2.70	0.45
1:E:8:DC:H42	2:D:8:DG:H1	0.60	0.45
3:A:784:SER:HB2	3:A:828:GLU:O	2.17	0.45
3:A:415:LEU:O	3:A:419:ILE:HG13	2.17	0.45
3:A:121:ASP:HB2	3:A:122:GLY:H	1.62	0.45
3:A:28:THR:HG22	3:A:29:ARG:H	1.80	0.44
3:A:7:THR:OG1	3:A:18:ARG:HD3	2.18	0.44
3:A:605:LEU:HD22	3:A:632:ILE:HD11	1.99	0.44
3:A:170:LEU:HD22	3:A:170:LEU:H	1.81	0.44
3:A:308:PRO:HG3	3:A:311:LYS:HE3	1.99	0.44
3:A:227:TYR:CB	3:A:263:ILE:HD13	2.48	0.44
3:A:47:THR:HG22	3:A:48:LYS:HG2	2.00	0.44
3:A:459:ASN:H	3:A:459:ASN:ND2	2.15	0.44
3:A:43:GLU:OE2	3:A:56:PRO:CD	2.66	0.44
3:A:764:PHE:CD1	3:A:876:PHE:HE2	2.36	0.44
3:A:500:LYS:O	3:A:503:LEU:HB2	2.17	0.44
1:E:3:DC:C2'	1:E:4:DG:C8	3.01	0.44
3:A:573:VAL:HG23	3:A:574:TRP:CD1	2.53	0.44
3:A:526:ILE:O	3:A:530:ILE:HG12	2.17	0.44
3:A:833:LEU:HD13	3:A:866:MET:HG2	2.00	0.44

Continued on next page...

Continued from previous page...

Atom-1	Atom-2	Interatomic distance (Å)	Clash overlap (Å)
3:A:511:ASP:OD2	3:A:534:SER:N	2.51	0.44
3:A:136:ILE:HG22	3:A:149:PHE:HB2	1.97	0.43
3:A:186:ILE:HD13	3:A:325:ILE:HD13	2.00	0.43
2:D:9:DA:H2"	2:D:8:DG:H8	1.83	0.43
3:A:395:PHE:HB2	3:A:591:GLN:HG2	2.00	0.43
3:A:227:TYR:CG	3:A:263:ILE:HD13	2.53	0.43
3:A:775:ASN:ND2	3:A:777:ILE:HG23	2.34	0.43
3:A:800:LYS:HZ2	3:A:800:LYS:HB2	1.83	0.43
3:A:112:ASN:HD22	3:A:113:PHE:N	2.16	0.43
3:A:52:ILE:O	3:A:428:GLU:HG3	2.18	0.43
3:A:257:TYR:CE1	3:A:787:ASN:ND2	2.84	0.43
3:A:330:ARG:O	3:A:334:ILE:HG13	2.18	0.43
3:A:725:LEU:HD11	3:A:750:ARG:HB2	2.00	0.43
3:A:660:GLU:CB	3:A:661:PRO:HD3	2.49	0.43
3:A:776:TYR:CG	3:A:777:ILE:N	2.86	0.43
3:A:800:LYS:HZ3	3:A:800:LYS:HB2	1.84	0.43
3:A:815:ILE:O	3:A:815:ILE:HG23	2.18	0.43
3:A:308:PRO:CG	3:A:311:LYS:HE3	2.49	0.43
3:A:578:TYR:CD1	3:A:578:TYR:C	2.92	0.43
2:D:8:DG:C2'	2:D:7:DT:OP1	2.63	0.43
3:A:422:GLN:NE2	3:A:681:MET:HG2	2.32	0.43
3:A:41:CYS:HB2	3:A:42:PRO:HD2	2.01	0.43
3:A:505:ASN:N	3:A:506:PRO:HD3	2.33	0.43
3:A:486:LYS:HG2	6:A:1130:HOH:O	2.18	0.43
3:A:481:GLN:NE2	3:A:559:ARG:NH1	2.63	0.43
3:A:779:ILE:HD11	3:A:866:MET:HE1	2.01	0.43
3:A:260:ARG:HA	3:A:260:ARG:HD3	1.87	0.43
3:A:786:ASN:O	3:A:787:ASN:ND2	2.51	0.43
3:A:379:VAL:HA	5:A:999:GDP:HN1	1.84	0.43
3:A:808:ILE:CG2	3:A:824:VAL:HG11	2.45	0.42
3:A:117:VAL:HG22	3:A:133:ILE:HA	2.00	0.42
3:A:834:PRO:HG3	3:A:871:LEU:HG	2.00	0.42
3:A:824:VAL:O	3:A:824:VAL:HG13	2.18	0.42
3:A:482:ARG:HG2	3:A:559:ARG:HB2	2.00	0.42
3:A:274:ILE:CG2	3:A:275:ASP:N	2.82	0.42
2:D:8:DG:C4	2:D:7:DT:H72	2.54	0.42
3:A:356:GLN:C	3:A:358:VAL:H	2.22	0.42
3:A:330:ARG:HH11	3:A:330:ARG:CG	2.32	0.42
3:A:700:GLY:CA	3:A:753:LEU:HD22	2.49	0.42
3:A:529:LYS:O	3:A:533:LEU:HD23	2.20	0.42
3:A:397:LYS:HB3	3:A:620:GLY:H	1.85	0.42

Continued on next page...

Continued from previous page...

Atom-1	Atom-2	Interatomic distance (Å)	Clash overlap (Å)
3:A:551:ALA:O	3:A:554:THR:HG22	2.19	0.42
3:A:621:ASP:HB3	3:A:624:SER:N	2.33	0.42
3:A:503:LEU:HD21	3:A:538:LEU:HB3	2.02	0.42
3:A:169:LYS:HA	3:A:169:LYS:HD3	1.80	0.42
3:A:305:TYR:CE1	3:A:312:LEU:HD22	2.55	0.42
3:A:34:LYS:HG2	3:A:63:ALA:O	2.20	0.42
1:E:8:DC:N4	2:D:8:DG:C6	2.82	0.42
3:A:775:ASN:OD1	3:A:775:ASN:C	2.57	0.42
3:A:459:ASN:N	3:A:459:ASN:ND2	2.67	0.42
3:A:430:ILE:HD13	3:A:463:TYR:CE2	2.55	0.42
3:A:384:ARG:NH1	3:A:384:ARG:HG3	2.35	0.42
3:A:43:GLU:OE2	3:A:56:PRO:HD2	2.20	0.42
3:A:8:VAL:HG21	3:A:93:LEU:CD1	2.43	0.42
3:A:872:LEU:CD2	3:A:877:ILE:HD11	2.49	0.41
3:A:285:GLN:OE1	3:A:285:GLN:HA	2.20	0.41
3:A:254:GLU:HB3	3:A:259:SER:HB2	2.02	0.41
1:E:7:DA:C4	1:E:8:DC:C5	3.08	0.41
3:A:699:GLY:C	3:A:753:LEU:HD22	2.41	0.41
3:A:238:THR:OG1	3:A:238:THR:O	2.37	0.41
3:A:423:VAL:O	3:A:424:ASN:HB3	2.20	0.41
3:A:257:TYR:CZ	3:A:787:ASN:OD1	2.73	0.41
3:A:149:PHE:N	3:A:149:PHE:CD1	2.88	0.41
3:A:804:HIS:O	3:A:808:ILE:HG13	2.20	0.41
3:A:384:ARG:O	3:A:386:HIS:CE1	2.73	0.41
3:A:638:GLU:HA	3:A:641:PHE:CD2	2.55	0.41
3:A:776:TYR:OH	3:A:854:ILE:HD11	2.20	0.41
3:A:494:ARG:NH1	3:A:521:ASP:CG	2.73	0.41
3:A:453:VAL:HG23	3:A:454:TYR:CE2	2.54	0.41
3:A:412:LEU:HD23	3:A:623:ASP:O	2.20	0.41
3:A:455:SER:HB2	3:A:465:LYS:HG2	2.03	0.41
3:A:494:ARG:NH1	3:A:521:ASP:OD2	2.53	0.41
3:A:253:ILE:HG22	3:A:254:GLU:N	2.36	0.41
2:D:11:DG:C2'	2:D:10:DT:O5'	2.58	0.41
3:A:542:LEU:O	3:A:546:GLN:HB2	2.21	0.41
3:A:329:TYR:CD2	3:A:333:GLN:NE2	2.89	0.41
3:A:532:LYS:O	3:A:532:LYS:HE2	2.20	0.41
3:A:449:ARG:NH1	3:A:452:ASP:OD1	2.51	0.41
3:A:152:LEU:HD22	3:A:159:VAL:O	2.21	0.41
3:A:180:SER:O	3:A:182:ILE:N	2.54	0.41
3:A:638:GLU:O	3:A:638:GLU:HG2	2.21	0.41
3:A:41:CYS:HB3	3:A:58:THR:HG23	2.03	0.41

Continued on next page...

Continued from previous page...

Atom-1	Atom-2	Interatomic distance (Å)	Clash overlap (Å)
3:A:801:CYS:HA	3:A:802:PRO:HD3	1.85	0.41
3:A:486:LYS:HE2	3:A:486:LYS:HB2	1.93	0.41
3:A:380:ILE:HA	3:A:381:PRO:HD3	1.88	0.40
3:A:533:LEU:CB	3:A:538:LEU:HD13	2.50	0.40
3:A:737:THR:HA	3:A:738:PRO:HD3	1.97	0.40
3:A:524:ASP:OD1	3:A:525:GLU:N	2.54	0.40
3:A:209:THR:HA	3:A:210:PRO:HD3	1.93	0.40
3:A:796:PHE:HB3	3:A:797:PRO:HD2	2.03	0.40
3:A:95:ASP:OD1	3:A:374:LYS:HE3	2.21	0.40
1:E:3:DC:H5"	3:A:253:ILE:HD13	2.03	0.40
3:A:179:PRO:O	3:A:183:ILE:HG13	2.22	0.40
3:A:47:THR:CG2	3:A:48:LYS:H	2.23	0.40
3:A:724:LYS:HZ2	3:A:724:LYS:HB3	1.83	0.40
3:A:791:TYR:CE2	3:A:802:PRO:CD	3.05	0.40

There are no symmetry-related clashes.

5.3 Torsion angles [i](#)

5.3.1 Protein backbone [i](#)

In the following table, the Percentiles column shows the percent Ramachandran outliers of the chain as a percentile score with respect to all X-ray entries followed by that with respect to entries of similar resolution.

The Analysed column shows the number of residues for which the backbone conformation was analysed, and the total number of residues.

Mol	Chain	Analysed	Favoured	Allowed	Outliers	Percentiles	
3	A	901/903 (100%)	820 (91%)	66 (7%)	15 (2%)	11	29

All (15) Ramachandran outliers are listed below:

Mol	Chain	Res	Type
3	A	167	ALA
3	A	256	MET
3	A	642	ARG
3	A	787	ASN
3	A	172	GLU
3	A	181	GLU
3	A	637	GLY

Continued on next page...

Continued from previous page...

Mol	Chain	Res	Type
3	A	897	LEU
3	A	43	GLU
3	A	121	ASP
3	A	136	ILE
3	A	179	PRO
3	A	302	LYS
3	A	780	ALA
3	A	828	GLU

5.3.2 Protein sidechains ⓘ

In the following table, the Percentiles column shows the percent sidechain outliers of the chain as a percentile score with respect to all X-ray entries followed by that with respect to entries of similar resolution.

The Analysed column shows the number of residues for which the sidechain conformation was analysed, and the total number of residues.

Mol	Chain	Analysed	Rotameric	Outliers	Percentiles	
3	A	802/802 (100%)	742 (92%)	60 (8%)	17	38

All (60) residues with a non-rotameric sidechain are listed below:

Mol	Chain	Res	Type
3	A	43	GLU
3	A	64	ASN
3	A	73	LYS
3	A	86	ASP
3	A	107	LYS
3	A	112	ASN
3	A	121	ASP
3	A	214	THR
3	A	238	THR
3	A	241	ARG
3	A	254	GLU
3	A	264	THR
3	A	268	ILE
3	A	273	TYR
3	A	275	ASP
3	A	281	SER
3	A	284	ASN
3	A	295	GLU

Continued on next page...

Continued from previous page...

Mol	Chain	Res	Type
3	A	314	GLU
3	A	316	ASN
3	A	327	ASP
3	A	337	LYS
3	A	343	LEU
3	A	358	VAL
3	A	373	LEU
3	A	375	GLU
3	A	391	TYR
3	A	402	ASN
3	A	440	HIS
3	A	441	ASP
3	A	459	ASN
3	A	493	GLN
3	A	519	ARG
3	A	532	LYS
3	A	536	LYS
3	A	556	GLN
3	A	612	GLU
3	A	624	SER
3	A	644	THR
3	A	649	ASP
3	A	653	LYS
3	A	660	GLU
3	A	685	ARG
3	A	718	THR
3	A	734	LYS
3	A	736	SER
3	A	747	GLU
3	A	760	LEU
3	A	772	ARG
3	A	775	ASN
3	A	776	TYR
3	A	777	ILE
3	A	783	SER
3	A	812	ASN
3	A	832	VAL
3	A	835	LEU
3	A	843	ASP
3	A	855	THR
3	A	880	LEU
3	A	900	MET

Some sidechains can be flipped to improve hydrogen bonding and reduce clashes. All (22) such sidechains are listed below:

Mol	Chain	Res	Type
3	A	40	HIS
3	A	64	ASN
3	A	112	ASN
3	A	158	ASN
3	A	173	GLN
3	A	206	GLN
3	A	232	ASN
3	A	284	ASN
3	A	299	ASN
3	A	316	ASN
3	A	333	GLN
3	A	402	ASN
3	A	422	GLN
3	A	424	ASN
3	A	440	HIS
3	A	459	ASN
3	A	480	ASN
3	A	481	GLN
3	A	485	HIS
3	A	645	ASN
3	A	678	GLN
3	A	773	GLN

5.3.3 RNA [i](#)

There are no RNA molecules in this entry.

5.4 Non-standard residues in protein, DNA, RNA chains [i](#)

There are no non-standard protein/DNA/RNA residues in this entry.

5.5 Carbohydrates [i](#)

There are no carbohydrates in this entry.

5.6 Ligand geometry [i](#)

Of 10 ligands modelled in this entry, 9 are monoatomic - leaving 1 for Mogul analysis.

In the following table, the Counts columns list the number of bonds (or angles) for which Mogul statistics could be retrieved, the number of bonds (or angles) that are observed in the model and the number of bonds (or angles) that are defined in the chemical component dictionary. The Link column lists molecule types, if any, to which the group is linked. The Z score for a bond length (or angle) is the number of standard deviations the observed value is removed from the expected value. A bond length (or angle) with $|Z| > 2$ is considered an outlier worth inspection. RMSZ is the root-mean-square of all Z scores of the bond lengths (or angles).

Mol	Type	Chain	Res	Link	Bond lengths			Bond angles		
					Counts	RMSZ	$\# Z > 2$	Counts	RMSZ	$\# Z > 2$
5	GDP	A	999	-	23,30,30	3.04	10 (43%)	30,47,47	2.78	7 (23%)

In the following table, the Chirals column lists the number of chiral outliers, the number of chiral centers analysed, the number of these observed in the model and the number defined in the chemical component dictionary. Similar counts are reported in the Torsion and Rings columns. '-' means no outliers of that kind were identified.

Mol	Type	Chain	Res	Link	Chirals	Torsions	Rings
5	GDP	A	999	-	-	0/12/32/32	0/3/3/3

All (10) bond length outliers are listed below:

Mol	Chain	Res	Type	Atoms	Z	Observed(Å)	Ideal(Å)
5	A	999	GDP	PB-O2B	-3.58	1.41	1.54
5	A	999	GDP	C5'-C4'	-2.22	1.44	1.51
5	A	999	GDP	C8-N7	2.61	1.39	1.34
5	A	999	GDP	O4'-C4'	2.83	1.51	1.45
5	A	999	GDP	O3'-C3'	2.95	1.50	1.43
5	A	999	GDP	PB-O3B	2.96	1.65	1.54
5	A	999	GDP	C5-C4	3.05	1.47	1.40
5	A	999	GDP	O6-C6	4.52	1.35	1.24
5	A	999	GDP	O4'-C1'	7.29	1.50	1.41
5	A	999	GDP	C2-N1	8.15	1.49	1.35

All (7) bond angle outliers are listed below:

Mol	Chain	Res	Type	Atoms	Z	Observed(°)	Ideal(°)
5	A	999	GDP	C6-C5-C4	-8.63	110.58	120.90
5	A	999	GDP	C4-C5-N7	-5.95	104.00	109.48
5	A	999	GDP	N2-C2-N1	-4.82	109.21	117.20
5	A	999	GDP	N3-C2-N1	-4.37	120.78	127.44
5	A	999	GDP	C2'-C1'-N9	2.13	117.55	114.29
5	A	999	GDP	O2'-C2'-C3'	2.70	120.60	111.83
5	A	999	GDP	N2-C2-N3	6.35	129.98	117.80

There are no chirality outliers.

There are no torsion outliers.

There are no ring outliers.

1 monomer is involved in 3 short contacts:

Mol	Chain	Res	Type	Clashes	Symm-Clashes
5	A	999	GDP	3	0

5.7 Other polymers [i](#)

There are no such residues in this entry.

5.8 Polymer linkage issues [i](#)

There are no chain breaks in this entry.

6 Fit of model and data

6.1 Protein, DNA and RNA chains

In the following table, the column labelled ‘#RSRZ> 2’ contains the number (and percentage) of RSRZ outliers, followed by percent RSRZ outliers for the chain as percentile scores relative to all X-ray entries and entries of similar resolution. The OWAB column contains the minimum, median, 95th percentile and maximum values of the occupancy-weighted average B-factor per residue. The column labelled ‘Q< 0.9’ lists the number of (and percentage) of residues with an average occupancy less than 0.9.

Mol	Chain	Analysed	<RSRZ>	#RSRZ>2	OWAB(Å ²)	Q<0.9
1	E	11/11 (100%)	1.16	2 (18%) 2 1	70, 104, 119, 122	0
2	D	12/12 (100%)	1.62	4 (33%) 0 0	49, 88, 122, 122	0
3	A	903/903 (100%)	-0.08	17 (1%) 70 70	29, 53, 84, 119	0
All	All	926/926 (100%)	-0.04	23 (2%) 61 61	29, 54, 86, 122	0

All (23) RSRZ outliers are listed below:

Mol	Chain	Res	Type	RSRZ
3	A	257	TYR	12.1
2	D	11	DG	5.3
3	A	903	PHE	4.5
3	A	256	MET	4.2
1	E	12	DT	4.1
2	D	12	DA	4.0
3	A	900	MET	3.9
2	D	9	DA	3.8
2	D	10	DT	3.7
3	A	722	GLU	3.6
3	A	254	GLU	3.6
3	A	895	ALA	3.3
3	A	175	GLY	3.2
3	A	901	PHE	2.8
1	E	10	DA	2.6
3	A	819	ILE	2.6
3	A	857	LEU	2.5
3	A	183	ILE	2.4
3	A	786	ASN	2.4
3	A	508	LEU	2.4
3	A	897	LEU	2.4
3	A	255	ASN	2.2
3	A	391	TYR	2.1

6.2 Non-standard residues in protein, DNA, RNA chains [i](#)

There are no non-standard protein/DNA/RNA residues in this entry.

6.3 Carbohydrates [i](#)

There are no carbohydrates in this entry.

6.4 Ligands [i](#)

In the following table, the Atoms column lists the number of modelled atoms in the group and the number defined in the chemical component dictionary. LLDF column lists the quality of electron density of the group with respect to its neighbouring residues in protein, DNA or RNA chains. The B-factors column lists the minimum, median, 95th percentile and maximum values of B factors of atoms in the group. The column labelled 'Q< 0.9' lists the number of atoms with occupancy less than 0.9.

Mol	Type	Chain	Res	Atoms	RSCC	RSR	LLDF	B-factors(\AA^2)	Q<0.9
4	CA	A	1002	1/1	0.72	0.25	3.79	97,97,97,97	0
5	GDP	A	999	28/28	0.82	0.24	3.01	35,76,122,122	0
4	CA	D	1003	1/1	0.85	0.22	1.89	73,73,73,73	0
4	CA	A	1006	1/1	0.85	0.24	1.18	107,107,107,107	0
4	CA	A	1004	1/1	0.92	0.19	0.72	58,58,58,58	0
4	CA	A	1001	1/1	0.99	0.19	0.02	63,63,63,63	0
4	CA	E	1024	1/1	0.93	0.35	-	122,122,122,122	0
4	CA	A	1025	1/1	0.60	0.14	-	82,82,82,82	0
4	CA	A	1005	1/1	0.75	0.26	-	94,94,94,94	0
4	CA	D	1009	1/1	0.90	0.09	-	78,78,78,78	0

6.5 Other polymers [i](#)

There are no such residues in this entry.