



# Full wwPDB X-ray Structure Validation Report ⓘ

Feb 1, 2016 – 03:38 PM GMT

PDB ID : 4CXM  
Title : Crystal Structure of Plasmodium Falciparum Spermidine Synthase in Complex with METHYLTHIOADENOSIN AND SPERMIDINE after catalysis in crystal  
Authors : Sprenger, J.; Svensson, B.; Al-Karadaghi, S.; Persson, L.  
Deposited on : 2014-04-07  
Resolution : 1.75 Å(reported)

This is a Full wwPDB X-ray Structure Validation Report for a publicly released PDB entry.  
We welcome your comments at [validation@mail.wwpdb.org](mailto:validation@mail.wwpdb.org)  
A user guide is available at  
<http://wwpdb.org/validation/2016/XrayValidationReportHelp>  
with specific help available everywhere you see the ⓘ symbol.

---

The following versions of software and data (see [references ⓘ](#)) were used in the production of this report:

MolProbity : 4.02b-467  
Mogul : 1.7 (RC4), CSD as536be (2015)  
Xtriage (Phenix) : 1.9-1692  
EDS : rb-20026688  
Percentile statistics : 20151230.v01 (using entries in the PDB archive December 30th 2015)  
Refmac : 5.8.0135  
CCP4 : 6.5.0  
Ideal geometry (proteins) : Engh & Huber (2001)  
Ideal geometry (DNA, RNA) : Parkinson et al. (1996)  
Validation Pipeline (wwPDB-VP) : trunk26865

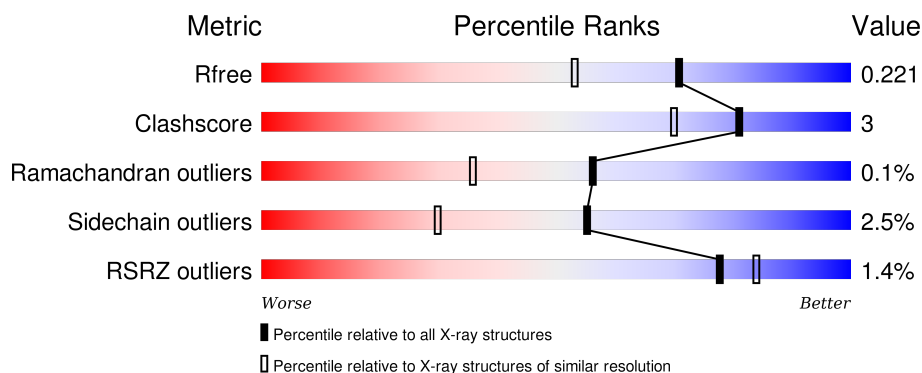
# 1 Overall quality at a glance

The following experimental techniques were used to determine the structure:

## *X-RAY DIFFRACTION*

The reported resolution of this entry is 1.75 Å.

Percentile scores (ranging between 0-100) for global validation metrics of the entry are shown in the following graphic. The table shows the number of entries on which the scores are based.



Metric	Whole archive (#Entries)	Similar resolution (#Entries, resolution range(Å))
$R_{free}$	91344	1609 (1.76-1.76)
Clashscore	102246	1730 (1.76-1.76)
Ramachandran outliers	100387	1711 (1.76-1.76)
Sidechain outliers	100360	1711 (1.76-1.76)
RSRZ outliers	91569	1610 (1.76-1.76)

The table below summarises the geometric issues observed across the polymeric chains and their fit to the electron density. The red, orange, yellow and green segments on the lower bar indicate the fraction of residues that contain outliers for  $\geq 3$ , 2, 1 and 0 types of geometric quality criteria. A grey segment represents the fraction of residues that are not modelled. The numeric value for each fraction is indicated below the corresponding segment, with a dot representing fractions  $\leq 5\%$ . The upper red bar (where present) indicates the fraction of residues that have poor fit to the electron density. The numeric value is given above the bar.

Mol	Chain	Length	Quality of chain
1	A	283	<div> <div>3%</div> <div> <div></div> <div>90%</div> <div>8%</div> <div>..</div> </div> </div>
1	B	283	<div> <div>%</div> <div> <div></div> <div>88%</div> <div>10%</div> <div>.</div> </div> </div>
1	C	283	<div> <div></div> <div> <div></div> <div>88%</div> <div>12%</div> <div>.</div> </div> </div>

The following table lists non-polymeric compounds, carbohydrate monomers and non-standard residues in protein, DNA, RNA chains that are outliers for geometric or electron-density-fit criteria:

Mol	Type	Chain	Res	Chirality	Geometry	Clashes	Electron density
3	SPD	A	640	-	-	-	X
3	SPD	B	640	-	-	-	X
3	SPD	C	640	-	-	-	X

## 2 Entry composition [i](#)

There are 4 unique types of molecules in this entry. The entry contains 7336 atoms, of which 0 are hydrogens and 0 are deuteriums.

In the tables below, the ZeroOcc column contains the number of atoms modelled with zero occupancy, the AltConf column contains the number of residues with at least one atom in alternate conformation and the Trace column contains the number of residues modelled with at most 2 atoms.

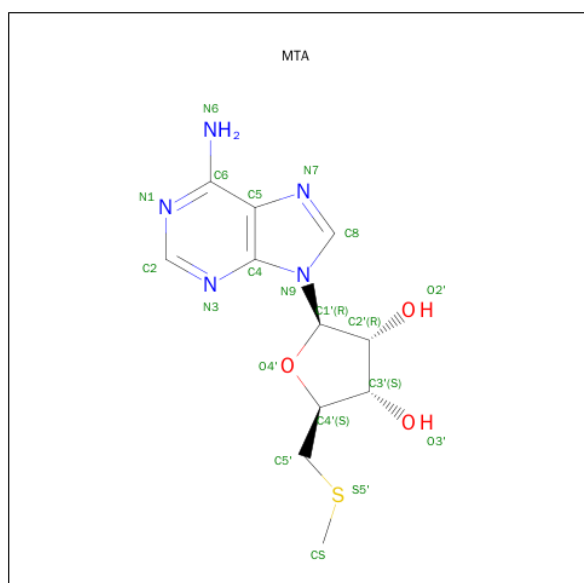
- Molecule 1 is a protein called SPERMIDINE SYNTHASE.

Mol	Chain	Residues	Atoms					ZeroOcc	AltConf	Trace
1	A	281	Total	C	N	O	S	0	0	0
			2254	1463	352	425	14			
1	B	280	Total	C	N	O	S	0	0	0
			2242	1455	350	423	14			
1	C	281	Total	C	N	O	S	0	0	0
			2254	1463	352	425	14			

There are 3 discrepancies between the modelled and reference sequences:

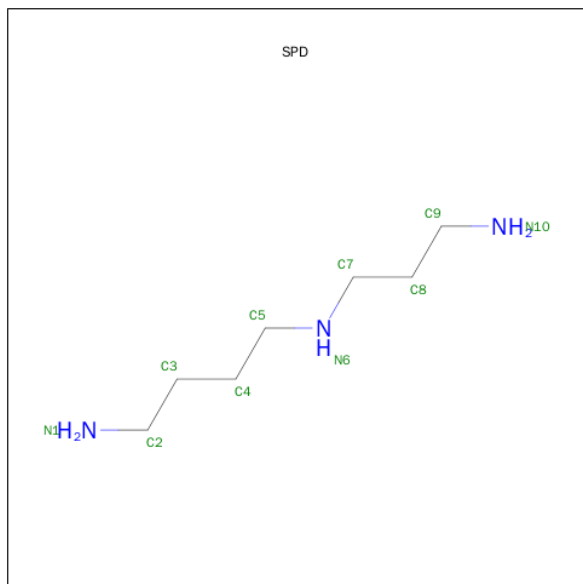
Chain	Residue	Modelled	Actual	Comment	Reference
A	39	GLY	-	EXPRESSION TAG	UNP Q8II73
B	39	GLY	-	EXPRESSION TAG	UNP Q8II73
C	39	GLY	-	EXPRESSION TAG	UNP Q8II73

- Molecule 2 is 5'-DEOXY-5'-METHYLTHIOADENOSINE (three-letter code: MTA) (formula:  $C_{11}H_{15}N_5O_3S$ ).



Mol	Chain	Residues	Atoms					ZeroOcc	AltConf
2	A	1	Total	C	N	O	S	0	0
			20	11	5	3	1		
2	B	1	Total	C	N	O	S	0	0
			20	11	5	3	1		
2	C	1	Total	C	N	O	S	0	0
			20	11	5	3	1		

- Molecule 3 is SPERMIDINE (three-letter code: SPD) (formula:  $C_7H_{19}N_3$ ).



Mol	Chain	Residues	Atoms			ZeroOcc	AltConf
3	A	1	Total	C	N	0	0
			10	7	3		
3	B	1	Total	C	N	0	0
			10	7	3		
3	C	1	Total	C	N	0	0
			10	7	3		

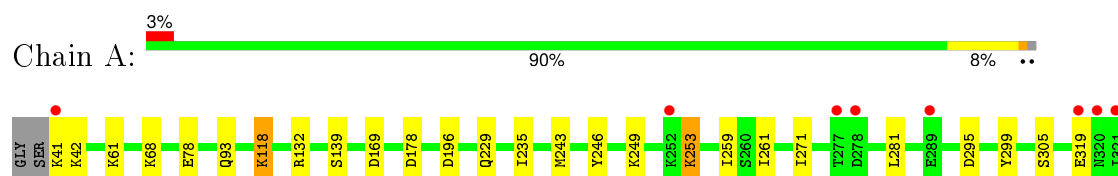
- Molecule 4 is water.

Mol	Chain	Residues	Atoms		ZeroOcc	AltConf
4	A	112	Total	O	0	0
			112	112		
4	B	175	Total	O	0	0
			175	175		
4	C	209	Total	O	0	0
			209	209		

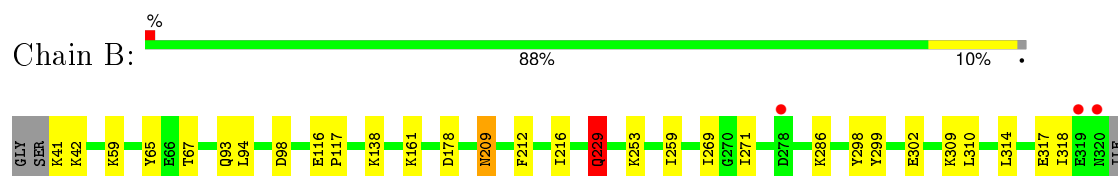
### 3 Residue-property plots [i](#)

These plots are drawn for all protein, RNA and DNA chains in the entry. The first graphic for a chain summarises the proportions of errors displayed in the second graphic. The second graphic shows the sequence view annotated by issues in geometry and electron density. Residues are color-coded according to the number of geometric quality criteria for which they contain at least one outlier: green = 0, yellow = 1, orange = 2 and red = 3 or more. A red dot above a residue indicates a poor fit to the electron density ( $RSRZ > 2$ ). Stretches of 2 or more consecutive residues without any outlier are shown as a green connector. Residues present in the sample, but not in the model, are shown in grey.

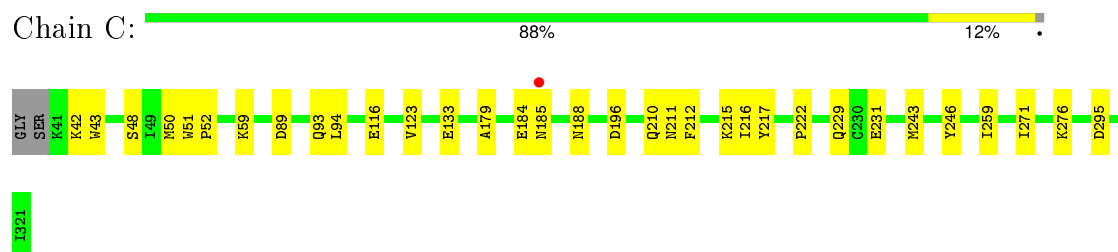
#### • Molecule 1: SPERMIDINE SYNTHASE



#### • Molecule 1: SPERMIDINE SYNTHASE



#### • Molecule 1: SPERMIDINE SYNTHASE



## 4 Data and refinement statistics

Property	Value	Source
Space group	C 1 2 1	Depositor
Cell constants a, b, c, $\alpha$ , $\beta$ , $\gamma$	197.90Å 134.40Å 48.30Å 90.00° 95.50° 90.00°	Depositor
Resolution (Å)	44.94 – 1.75 44.94 – 1.75	Depositor EDS
% Data completeness (in resolution range)	98.6 (44.94-1.75) 98.6 (44.94-1.75)	Depositor EDS
$R_{merge}$	0.05	Depositor
$R_{sym}$	(Not available)	Depositor
$\langle I/\sigma(I) \rangle$ <sup>1</sup>	1.80 (at 1.75Å)	Xtriage
Refinement program	REFMAC 5.7.0029	Depositor
R, $R_{free}$	0.179 , 0.216 0.187 , 0.221	Depositor DCC
$R_{free}$ test set	6253 reflections (5.28%)	DCC
Wilson B-factor (Å <sup>2</sup> )	20.7	Xtriage
Anisotropy	0.112	Xtriage
Bulk solvent $k_{sol}$ (e/Å <sup>3</sup> ), $B_{sol}$ (Å <sup>2</sup> )	0.37 , 44.1	EDS
Estimated twinning fraction	No twinning to report.	Xtriage
L-test for twinning <sup>2</sup>	$\langle  L  \rangle = 0.49$ , $\langle L^2 \rangle = 0.32$	Xtriage
Outliers	1 of 124670 reflections (0.001%)	Xtriage
$F_o, F_c$ correlation	0.96	EDS
Total number of atoms	7336	wwPDB-VP
Average B, all atoms (Å <sup>2</sup> )	25.0	wwPDB-VP

Xtriage's analysis on translational NCS is as follows: *The largest off-origin peak in the Patterson function is 4.19% of the height of the origin peak. No significant pseudotranslation is detected.*

<sup>1</sup>Intensities estimated from amplitudes.

<sup>2</sup>Theoretical values of  $\langle |L| \rangle$ ,  $\langle L^2 \rangle$  for acentric reflections are 0.5, 0.375 respectively for untwinned datasets, and 0.333, 0.2 for perfectly twinned datasets.

## 5 Model quality ⓘ

### 5.1 Standard geometry ⓘ

Bond lengths and bond angles in the following residue types are not validated in this section: MTA, SPD

The Z score for a bond length (or angle) is the number of standard deviations the observed value is removed from the expected value. A bond length (or angle) with  $|Z| > 5$  is considered an outlier worth inspection. RMSZ is the root-mean-square of all Z scores of the bond lengths (or angles).

Mol	Chain	Bond lengths		Bond angles	
		RMSZ	$\# Z  > 5$	RMSZ	$\# Z  > 5$
1	A	1.10	0/2304	1.02	6/3111 (0.2%)
1	B	1.14	1/2292 (0.0%)	1.08	8/3097 (0.3%)
1	C	1.19	1/2304 (0.0%)	1.09	5/3111 (0.2%)
All	All	1.14	2/6900 (0.0%)	1.07	19/9319 (0.2%)

All (2) bond length outliers are listed below:

Mol	Chain	Res	Type	Atoms	Z	Observed(Å)	Ideal(Å)
1	B	298	TYR	CZ-OH	5.70	1.47	1.37
1	C	133	GLU	CD-OE1	5.42	1.31	1.25

All (19) bond angle outliers are listed below:

Mol	Chain	Res	Type	Atoms	Z	Observed(°)	Ideal(°)
1	A	295	ASP	CB-CG-OD1	8.78	126.20	118.30
1	C	50	MET	CG-SD-CE	8.28	113.44	100.20
1	C	295	ASP	CB-CG-OD1	7.92	125.43	118.30
1	B	299	TYR	CZ-CE2-CD2	-7.30	113.23	119.80
1	B	178	ASP	CB-CG-OD1	7.24	124.81	118.30
1	C	295	ASP	CB-CG-OD2	-6.75	112.22	118.30
1	C	243	MET	CG-SD-CE	-6.40	89.96	100.20
1	B	229	GLN	CA-CB-CG	5.89	126.36	113.40
1	A	132	ARG	NE-CZ-NH2	-5.88	117.36	120.30
1	B	309	LYS	CD-CE-NZ	-5.86	98.23	111.70
1	A	169	ASP	CB-CG-OD1	5.79	123.51	118.30
1	B	299	TYR	CG-CD2-CE2	5.66	125.83	121.30
1	B	302	GLU	OE1-CD-OE2	5.23	129.57	123.30
1	A	295	ASP	CB-CG-OD2	-5.22	113.60	118.30
1	B	98	ASP	CB-CG-OD1	5.17	122.96	118.30
1	C	89	ASP	CB-CG-OD2	5.17	122.95	118.30

*Continued on next page...*



*Continued from previous page...*

Mol	Chain	Res	Type	Atoms	Z	Observed(°)	Ideal(°)
1	A	281	LEU	CB-CG-CD2	-5.08	102.36	111.00
1	B	298	TYR	CZ-CE2-CD2	5.01	124.31	119.80
1	A	178	ASP	CB-CG-OD1	5.01	122.81	118.30

There are no chirality outliers.

There are no planarity outliers.

## 5.2 Too-close contacts

In the following table, the Non-H and H(model) columns list the number of non-hydrogen atoms and hydrogen atoms in the chain respectively. The H(added) column lists the number of hydrogen atoms added and optimized by MolProbity. The Clashes column lists the number of clashes within the asymmetric unit, whereas Symm-Clashes lists symmetry related clashes.

Mol	Chain	Non-H	H(model)	H(added)	Clashes	Symm-Clashes
1	A	2254	0	2265	12	0
1	B	2242	0	2245	15	0
1	C	2254	0	2265	15	0
2	A	20	0	15	1	0
2	B	20	0	15	3	0
2	C	20	0	15	0	0
3	A	10	0	19	3	0
3	B	10	0	19	4	0
3	C	10	0	19	2	0
4	A	112	0	0	1	2
4	B	175	0	0	1	1
4	C	209	0	0	0	1
All	All	7336	0	6877	45	3

The all-atom clashscore is defined as the number of clashes found per 1000 atoms (including hydrogen atoms). The all-atom clashscore for this structure is 3.

All (45) close contacts within the same asymmetric unit are listed below, sorted by their clash magnitude.

Atom-1	Atom-2	Interatomic distance (Å)	Clash overlap (Å)
1:A:196:ASP:OD1	3:A:640:SPD:H72	1.80	0.81
2:B:540:MTA:S5'	3:B:640:SPD:H72	2.24	0.77
2:B:540:MTA:S5'	3:B:640:SPD:C7	2.77	0.72
1:C:196:ASP:OD1	3:C:640:SPD:H72	1.91	0.69
1:B:65:TYR:OH	1:B:67:THR:HG21	1.94	0.66

*Continued on next page...*

*Continued from previous page...*

Atom-1	Atom-2	Interatomic distance (Å)	Clash overlap (Å)
1:A:259:ILE:HD11	1:A:271:ILE:HD11	1.82	0.62
1:A:68:LYS:O	1:B:161:LYS:NZ	2.32	0.62
1:B:229:GLN:HG2	1:B:269:ILE:HD11	1.81	0.62
1:A:253:LYS:HE3	1:A:253:LYS:HA	1.86	0.57
1:C:43:TRP:CZ2	1:C:59:LYS:HE3	2.41	0.56
2:B:540:MTA:S5'	3:B:640:SPD:H71	2.45	0.55
1:A:42:LYS:HD3	4:A:2003:HOH:O	2.05	0.55
1:A:93:GLN:O	3:A:640:SPD:H81	2.08	0.54
1:C:212:PHE:CE2	1:C:216:ILE:HD11	2.44	0.53
1:B:259:ILE:HD11	1:B:271:ILE:HD11	1.91	0.53
1:C:229:GLN:HE21	1:C:231:GLU:H	1.55	0.53
1:B:41:LYS:HG2	1:B:59:LYS:HE2	1.93	0.51
2:A:540:MTA:S5'	3:A:640:SPD:H71	2.51	0.51
1:C:184:GLU:O	1:C:185:ASN:HB2	2.13	0.48
1:C:94:LEU:HD12	1:C:94:LEU:C	2.34	0.48
1:A:243:MET:HE1	1:A:246:TYR:HE2	1.79	0.48
1:B:65:TYR:CE2	1:B:67:THR:HG22	2.49	0.47
1:B:94:LEU:HD12	1:B:94:LEU:C	2.35	0.47
1:C:229:GLN:NE2	1:C:231:GLU:H	2.13	0.47
1:B:310:LEU:HD13	1:B:314:LEU:HD23	1.97	0.46
1:C:210:GLN:HE22	1:C:246:TYR:HA	1.81	0.46
1:B:116:GLU:N	1:B:117:PRO:CD	2.79	0.46
1:B:317:GLU:HG3	4:B:2175:HOH:O	2.16	0.46
1:C:217:TYR:CE2	1:C:276:LYS:HE2	2.51	0.45
1:C:211:ASN:HD21	1:C:215:LYS:NZ	2.14	0.45
1:A:41:LYS:HE3	1:A:61:LYS:HA	1.99	0.45
1:A:118:LYS:HD2	1:A:118:LYS:HA	1.82	0.44
1:B:209:ASN:HD22	1:B:209:ASN:C	2.21	0.44
1:B:209:ASN:ND2	1:B:212:PHE:H	2.16	0.44
1:B:93:GLN:O	3:B:640:SPD:H81	2.17	0.44
1:A:243:MET:CE	1:A:246:TYR:CE2	3.00	0.43
1:C:48:SER:HB3	1:C:51:TRP:CE2	2.53	0.43
1:C:123:VAL:HG13	1:C:179:ALA:CB	2.49	0.43
1:B:212:PHE:CE2	1:B:216:ILE:HD11	2.53	0.42
1:A:299:TYR:CD1	1:A:299:TYR:C	2.93	0.42
1:C:93:GLN:O	3:C:640:SPD:H81	2.20	0.41
1:C:188:ASN:OD1	1:C:222:PRO:HD3	2.20	0.41
1:C:259:ILE:HD11	1:C:271:ILE:HD11	2.03	0.41
1:B:229:GLN:HG2	1:B:269:ILE:CD1	2.48	0.41
1:A:243:MET:HE1	1:A:246:TYR:CE2	2.54	0.40

All (3) symmetry-related close contacts are listed below. The label for Atom-2 includes the sym-

metry operator and encoded unit-cell translations to be applied.

Atom-1	Atom-2	Interatomic distance (Å)	Clash overlap (Å)
4:B:2101:HOH:O	4:C:2171:HOH:O[4_444]	1.47	0.73
4:A:2006:HOH:O	4:A:2009:HOH:O[2_555]	1.80	0.40
4:A:2009:HOH:O	4:A:2009:HOH:O[2_555]	1.90	0.30

## 5.3 Torsion angles [i](#)

### 5.3.1 Protein backbone [i](#)

In the following table, the Percentiles column shows the percent Ramachandran outliers of the chain as a percentile score with respect to all X-ray entries followed by that with respect to entries of similar resolution.

The Analysed column shows the number of residues for which the backbone conformation was analysed, and the total number of residues.

Mol	Chain	Analysed	Favoured	Allowed	Outliers	Percentiles	
1	A	279/283 (99%)	270 (97%)	8 (3%)	1 (0%)	39	19
1	B	278/283 (98%)	272 (98%)	6 (2%)	0	100	100
1	C	279/283 (99%)	271 (97%)	8 (3%)	0	100	100
All	All	836/849 (98%)	813 (97%)	22 (3%)	1 (0%)	56	36

All (1) Ramachandran outliers are listed below:

Mol	Chain	Res	Type
1	A	235	ILE

### 5.3.2 Protein sidechains [i](#)

In the following table, the Percentiles column shows the percent sidechain outliers of the chain as a percentile score with respect to all X-ray entries followed by that with respect to entries of similar resolution.

The Analysed column shows the number of residues for which the sidechain conformation was analysed, and the total number of residues.

Mol	Chain	Analysed	Rotameric	Outliers	Percentiles	
1	A	253/254 (100%)	244 (96%)	9 (4%)	42	16
1	B	251/254 (99%)	244 (97%)	7 (3%)	51	25

*Continued on next page...*

*Continued from previous page...*

Mol	Chain	Analysed	Rotameric	Outliers	Percentiles	
1	C	253/254 (100%)	250 (99%)	3 (1%)	78	62
All	All	757/762 (99%)	738 (98%)	19 (2%)	55	30

All (19) residues with a non-rotameric sidechain are listed below:

Mol	Chain	Res	Type
1	A	78	GLU
1	A	118	LYS
1	A	139	SER
1	A	229	GLN
1	A	249	LYS
1	A	253	LYS
1	A	261	ILE
1	A	305	SER
1	A	319	GLU
1	B	42	LYS
1	B	138	LYS
1	B	209	ASN
1	B	229	GLN
1	B	253	LYS
1	B	286	LYS
1	B	318	ILE
1	C	42	LYS
1	C	52	PRO
1	C	116	GLU

Some sidechains can be flipped to improve hydrogen bonding and reduce clashes. All (14) such sidechains are listed below:

Mol	Chain	Res	Type
1	A	93	GLN
1	A	142	ASN
1	A	210	GLN
1	A	211	ASN
1	A	218	ASN
1	B	209	ASN
1	B	211	ASN
1	B	285	ASN
1	B	320	ASN
1	C	73	ASN
1	C	210	GLN
1	C	211	ASN

*Continued on next page...*

*Continued from previous page...*

Mol	Chain	Res	Type
1	C	229	GLN
1	C	285	ASN

### 5.3.3 RNA [i](#)

There are no RNA molecules in this entry.

## 5.4 Non-standard residues in protein, DNA, RNA chains [i](#)

There are no non-standard protein/DNA/RNA residues in this entry.

## 5.5 Carbohydrates [i](#)

There are no carbohydrates in this entry.

## 5.6 Ligand geometry [i](#)

6 ligands are modelled in this entry.

In the following table, the Counts columns list the number of bonds (or angles) for which Mogul statistics could be retrieved, the number of bonds (or angles) that are observed in the model and the number of bonds (or angles) that are defined in the chemical component dictionary. The Link column lists molecule types, if any, to which the group is linked. The Z score for a bond length (or angle) is the number of standard deviations the observed value is removed from the expected value. A bond length (or angle) with  $|Z| > 2$  is considered an outlier worth inspection. RMSZ is the root-mean-square of all Z scores of the bond lengths (or angles).

Mol	Type	Chain	Res	Link	Bond lengths			Bond angles		
					Counts	RMSZ	# $ Z  > 2$	Counts	RMSZ	# $ Z  > 2$
2	MTA	A	540	-	17,22,22	0.96	2 (11%)	17,32,32	2.10	5 (29%)
3	SPD	A	640	-	9,9,9	0.77	0	8,8,8	1.60	2 (25%)
2	MTA	B	540	-	17,22,22	1.05	1 (5%)	17,32,32	2.08	3 (17%)
3	SPD	B	640	-	9,9,9	0.47	0	8,8,8	2.37	2 (25%)
2	MTA	C	540	-	17,22,22	1.44	2 (11%)	17,32,32	2.37	7 (41%)
3	SPD	C	640	-	9,9,9	1.01	1 (11%)	8,8,8	1.87	3 (37%)

In the following table, the Chirals column lists the number of chiral outliers, the number of chiral centers analysed, the number of these observed in the model and the number defined in the chemical component dictionary. Similar counts are reported in the Torsion and Rings columns. '-' means

no outliers of that kind were identified.

Mol	Type	Chain	Res	Link	Chirals	Torsions	Rings
2	MTA	A	540	-	-	0/3/23/23	0/3/3/3
3	SPD	A	640	-	-	0/7/7/7	0/0/0/0
2	MTA	B	540	-	-	0/3/23/23	0/3/3/3
3	SPD	B	640	-	-	0/7/7/7	0/0/0/0
2	MTA	C	540	-	-	0/3/23/23	0/3/3/3
3	SPD	C	640	-	-	0/7/7/7	0/0/0/0

All (6) bond length outliers are listed below:

Mol	Chain	Res	Type	Atoms	Z	Observed(Å)	Ideal(Å)
2	C	540	MTA	C5'-S5'	-4.09	1.76	1.80
2	B	540	MTA	C5'-S5'	-2.30	1.78	1.80
2	A	540	MTA	O2'-C2'	-2.16	1.37	1.43
2	A	540	MTA	C5-C4	2.10	1.45	1.40
3	C	640	SPD	C8-C7	2.39	1.61	1.51
2	C	540	MTA	C5-C4	2.55	1.46	1.40

All (22) bond angle outliers are listed below:

Mol	Chain	Res	Type	Atoms	Z	Observed(°)	Ideal(°)
2	B	540	MTA	N3-C2-N1	-5.83	124.43	128.89
2	C	540	MTA	N3-C2-N1	-5.36	124.79	128.89
2	A	540	MTA	C4'-O4'-C1'	-5.28	103.92	109.72
2	A	540	MTA	N3-C2-N1	-4.26	125.63	128.89
2	C	540	MTA	C1'-N9-C4	-2.91	122.55	126.94
2	C	540	MTA	C4'-O4'-C1'	-2.62	106.84	109.72
2	A	540	MTA	O3'-C3'-C4'	-2.58	103.33	111.05
2	C	540	MTA	O4'-C4'-C3'	-2.23	100.65	105.15
2	B	540	MTA	C4'-O4'-C1'	-2.22	107.28	109.72
3	C	640	SPD	C4-C3-C2	-2.20	103.61	114.01
2	A	540	MTA	C1'-N9-C4	-2.05	123.84	126.94
2	A	540	MTA	C2'-C1'-N9	-2.00	111.23	114.29
2	C	540	MTA	O3'-C3'-C2'	2.15	118.83	111.83
3	C	640	SPD	C4-C5-N6	2.35	117.83	111.96
3	A	640	SPD	C7-N6-C5	2.47	122.08	113.35
3	A	640	SPD	C8-C7-N6	2.95	119.32	111.96
2	C	540	MTA	C2-N1-C6	3.07	124.26	118.77
2	C	540	MTA	N6-C6-N1	3.27	126.22	119.20
3	B	640	SPD	C7-N6-C5	3.59	126.07	113.35
3	C	640	SPD	C8-C7-N6	3.62	121.01	111.96
2	B	540	MTA	O4'-C4'-C5'	4.13	120.10	108.85

*Continued on next page...*

*Continued from previous page...*

Mol	Chain	Res	Type	Atoms	Z	Observed( $^{\circ}$ )	Ideal( $^{\circ}$ )
3	B	640	SPD	C8-C7-N6	5.14	124.80	111.96

There are no chirality outliers.

There are no torsion outliers.

There are no ring outliers.

5 monomers are involved in 9 short contacts:

Mol	Chain	Res	Type	Clashes	Symm-Clashes
2	A	540	MTA	1	0
3	A	640	SPD	3	0
2	B	540	MTA	3	0
3	B	640	SPD	4	0
3	C	640	SPD	2	0

## 5.7 Other polymers [i](#)

There are no such residues in this entry.

## 5.8 Polymer linkage issues [i](#)

There are no chain breaks in this entry.

## 6 Fit of model and data [i](#)

### 6.1 Protein, DNA and RNA chains [i](#)

In the following table, the column labelled ‘#RSRZ> 2’ contains the number (and percentage) of RSRZ outliers, followed by percent RSRZ outliers for the chain as percentile scores relative to all X-ray entries and entries of similar resolution. The OWAB column contains the minimum, median, 95<sup>th</sup> percentile and maximum values of the occupancy-weighted average B-factor per residue. The column labelled ‘Q< 0.9’ lists the number of (and percentage) of residues with an average occupancy less than 0.9.

Mol	Chain	Analysed	<RSRZ>	#RSRZ>2	OWAB(Å <sup>2</sup> )	Q<0.9
1	A	281/283 (99%)	-0.06	8 (2%) 56 62	19, 27, 48, 63	0
1	B	280/283 (98%)	-0.31	3 (1%) 82 87	13, 21, 39, 81	0
1	C	281/283 (99%)	-0.21	1 (0%) 93 94	12, 18, 36, 46	0
All	All	842/849 (99%)	-0.19	12 (1%) 78 84	12, 23, 42, 81	0

All (12) RSRZ outliers are listed below:

Mol	Chain	Res	Type	RSRZ
1	A	321	ILE	4.0
1	B	320	ASN	3.3
1	A	278	ASP	3.3
1	B	319	GLU	3.2
1	A	289	GLU	2.7
1	B	278	ASP	2.4
1	A	41	LYS	2.3
1	C	185	ASN	2.3
1	A	319	GLU	2.3
1	A	277	THR	2.2
1	A	320	ASN	2.1
1	A	252	LYS	2.1

### 6.2 Non-standard residues in protein, DNA, RNA chains [i](#)

There are no non-standard protein/DNA/RNA residues in this entry.

### 6.3 Carbohydrates [i](#)

There are no carbohydrates in this entry.



## 6.4 Ligands [i](#)

In the following table, the Atoms column lists the number of modelled atoms in the group and the number defined in the chemical component dictionary. LLDF column lists the quality of electron density of the group with respect to its neighbouring residues in protein, DNA or RNA chains. The B-factors column lists the minimum, median, 95<sup>th</sup> percentile and maximum values of B factors of atoms in the group. The column labelled 'Q< 0.9' lists the number of atoms with occupancy less than 0.9.

Mol	Type	Chain	Res	Atoms	RSCC	RSR	LLDF	B-factors(Å <sup>2</sup> )	Q<0.9
3	SPD	B	640	10/10	0.89	0.14	5.78	18,27,34,37	0
3	SPD	A	640	10/10	0.91	0.14	3.09	21,34,36,40	0
3	SPD	C	640	10/10	0.93	0.14	2.02	18,22,29,29	0
2	MTA	C	540	20/20	0.98	0.06	-0.81	15,16,19,21	0
2	MTA	B	540	20/20	0.98	0.05	-0.96	17,18,21,24	0
2	MTA	A	540	20/20	0.98	0.05	-1.40	19,21,26,30	0

## 6.5 Other polymers [i](#)

There are no such residues in this entry.