



Full wwPDB X-ray Structure Validation Report ⓘ

Jan 31, 2016 – 06:52 PM GMT

PDB ID : 1CY4
Title : COMPLEX OF E.COLI DNA TOPOISOMERASE I WITH 5'pTpTpTp3'
Authors : Feinberg, H.; Changela, A.; Mondragon, A.
Deposited on : 1999-08-31
Resolution : 2.55 Å(reported)

This is a Full wwPDB X-ray Structure Validation Report for a publicly released PDB entry.
We welcome your comments at validation@mail.wwpdb.org
A user guide is available at
<http://wwpdb.org/validation/2016/XrayValidationReportHelp>
with specific help available everywhere you see the ⓘ symbol.

The following versions of software and data (see [references ⓘ](#)) were used in the production of this report:

MolProbity : 4.02b-467
Mogul : 1.7 (RC4), CSD as536be (2015)
Xtriage (Phenix) : **NOT EXECUTED**
EDS : **NOT EXECUTED**
Percentile statistics : 20151230.v01 (using entries in the PDB archive December 30th 2015)
Ideal geometry (proteins) : Engh & Huber (2001)
Ideal geometry (DNA, RNA) : Parkinson et al. (1996)
Validation Pipeline (wwPDB-VP) : trunk26865

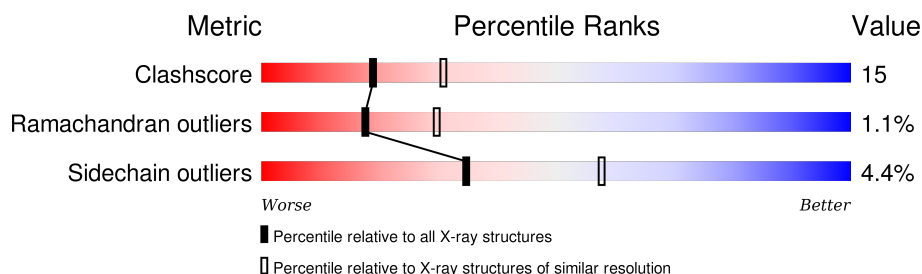
1 Overall quality at a glance

The following experimental techniques were used to determine the structure:

X-RAY DIFFRACTION

The reported resolution of this entry is 2.55 Å.

Percentile scores (ranging between 0-100) for global validation metrics of the entry are shown in the following graphic. The table shows the number of entries on which the scores are based.



Metric	Whole archive (#Entries)	Similar resolution (#Entries, resolution range(Å))
Clashscore	102246	5292 (2.58-2.50)
Ramachandran outliers	100387	5194 (2.58-2.50)
Sidechain outliers	100360	5196 (2.58-2.50)

The table below summarises the geometric issues observed across the polymeric chains and their fit to the electron density. The red, orange, yellow and green segments on the lower bar indicate the fraction of residues that contain outliers for ≥ 3 , 2, 1 and 0 types of geometric quality criteria. A grey segment represents the fraction of residues that are not modelled. The numeric value for each fraction is indicated below the corresponding segment, with a dot representing fractions $\leq 5\%$. The upper red bar (where present) indicates the fraction of residues that have poor fit to the electron density. The numeric value is given above the bar.

Note EDS was not executed.

Mol	Chain	Length	Quality of chain
1	A	599	

The following table lists non-polymeric compounds, carbohydrate monomers and non-standard residues in protein, DNA, RNA chains that are outliers for geometric or electron-density-fit criteria:

Mol	Type	Chain	Res	Chirality	Geometry	Clashes	Electron density
3	TMP	A	600	X	-	X	-

2 Entry composition [i](#)

There are 4 unique types of molecules in this entry. The entry contains 4758 atoms, of which 0 are hydrogens and 0 are deuteriums.

In the tables below, the ZeroOcc column contains the number of atoms modelled with zero occupancy, the AltConf column contains the number of residues with at least one atom in alternate conformation and the Trace column contains the number of residues modelled with at most 2 atoms.

- Molecule 1 is a protein called DNA TOPOISOMERASE I.

Mol	Chain	Residues	Atoms					ZeroOcc	AltConf	Trace
			Total	C	N	O	S			
1	A	558	4444	2798	789	839	18	0	0	0

There are 2 discrepancies between the modelled and reference sequences:

Chain	Residue	Modelled	Actual	Comment	Reference
A	-1	GLY	-	EXPRESSION ARTIFACT	UNP P06612
A	0	SER	-	EXPRESSION ARTIFACT	UNP P06612

- Molecule 2 is PHOSPHATE ION (three-letter code: PO4) (formula: O₄P).



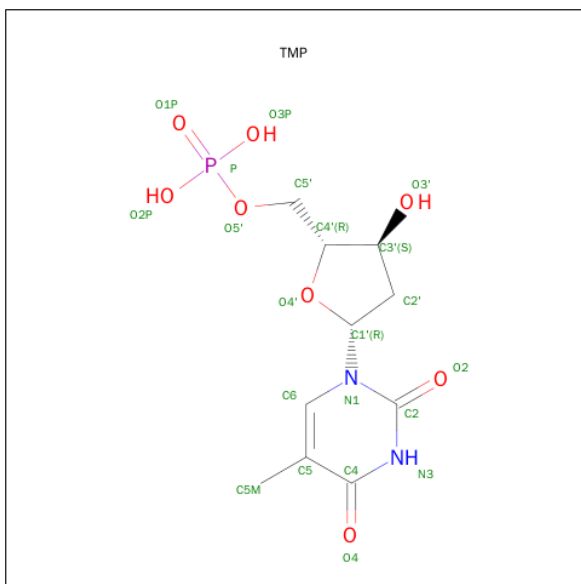
Mol	Chain	Residues	Atoms			ZeroOcc	AltConf
2	A	1	Total	O	P	0	0
			5	4	1		
2	A	1	Total	O	P	0	0
			5	4	1		

Continued on next page...

Continued from previous page...

Mol	Chain	Residues	Atoms			ZeroOcc	AltConf
2	A	1	Total	O	P	0	0
			5	4	1		

- Molecule 3 is THYMIDINE-5'-PHOSPHATE (three-letter code: TMP) (formula: $C_{10}H_{15}N_2O_8P$).



Mol	Chain	Residues	Atoms					ZeroOcc	AltConf
3	A	1	Total	C	N	O	P	0	0
			21	10	2	8	1		

- Molecule 4 is water.

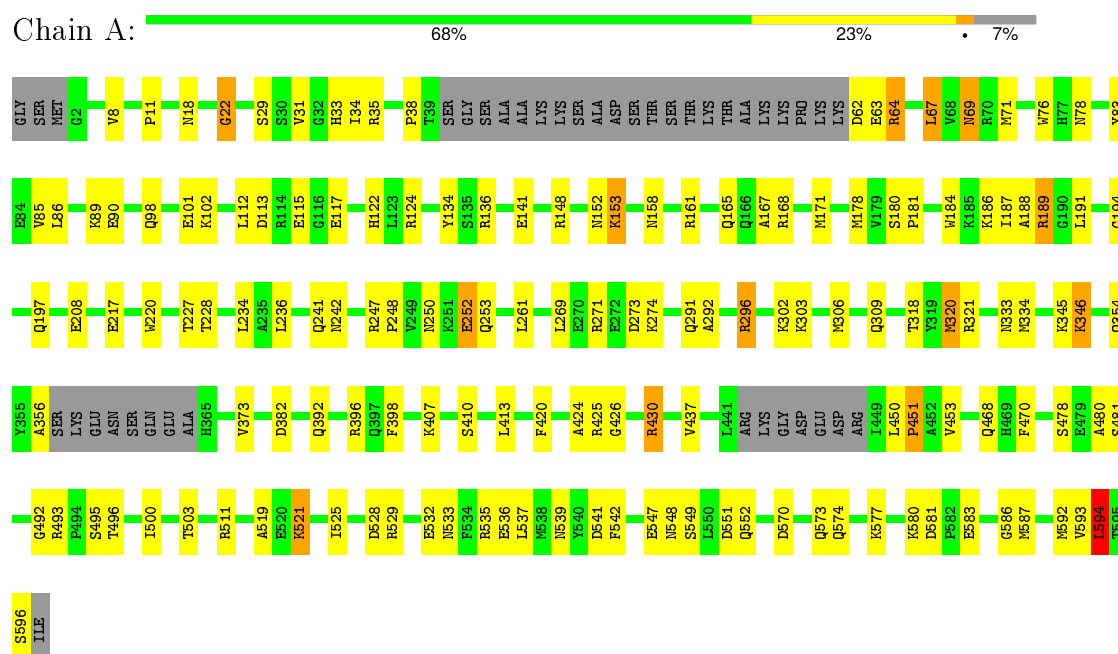
Mol	Chain	Residues	Atoms		ZeroOcc	AltConf
4	A	278	Total	O	0	0
			278	278		

3 Residue-property plots

These plots are drawn for all protein, RNA and DNA chains in the entry. The first graphic for a chain summarises the proportions of errors displayed in the second graphic. The second graphic shows the sequence view annotated by issues in geometry and electron density. Residues are color-coded according to the number of geometric quality criteria for which they contain at least one outlier: green = 0, yellow = 1, orange = 2 and red = 3 or more. A red dot above a residue indicates a poor fit to the electron density ($RSRZ > 2$). Stretches of 2 or more consecutive residues without any outlier are shown as a green connector. Residues present in the sample, but not in the model, are shown in grey.

Note EDS was not executed.

• Molecule 1: DNA TOPOISOMERASE I



4 Data and refinement statistics

Xtriage (Phenix) and EDS were not executed - this section will therefore be incomplete.

Property	Value	Source
Space group	P 21 21 21	Depositor
Cell constants a, b, c, α , β , γ	63.95Å 78.76Å 141.71Å 90.00° 90.00° 90.00°	Depositor
Resolution (Å)	19.76 – 2.55	Depositor
% Data completeness (in resolution range)	97.4 (19.76-2.55)	Depositor
R_{merge}	0.08	Depositor
R_{sym}	(Not available)	Depositor
Refinement program	X-PLOR, REFMAC, CNS 0.9	Depositor
R, R_{free}	0.221 , 0.299	Depositor
Estimated twinning fraction	No twinning to report.	Xtriage
Total number of atoms	4758	wwPDB-VP
Average B, all atoms (Å ²)	41.0	wwPDB-VP

5 Model quality

5.1 Standard geometry

Bond lengths and bond angles in the following residue types are not validated in this section: TMP, PO4

The Z score for a bond length (or angle) is the number of standard deviations the observed value is removed from the expected value. A bond length (or angle) with $|Z| > 5$ is considered an outlier worth inspection. RMSZ is the root-mean-square of all Z scores of the bond lengths (or angles).

Mol	Chain	Bond lengths		Bond angles	
		RMSZ	$\# Z > 5$	RMSZ	$\# Z > 5$
1	A	0.34	0/4530	0.58	0/6121

There are no bond length outliers.

There are no bond angle outliers.

There are no chirality outliers.

There are no planarity outliers.

5.2 Too-close contacts

In the following table, the Non-H and H(model) columns list the number of non-hydrogen atoms and hydrogen atoms in the chain respectively. The H(added) column lists the number of hydrogen atoms added and optimized by MolProbity. The Clashes column lists the number of clashes within the asymmetric unit, whereas Symm-Clashes lists symmetry related clashes.

Mol	Chain	Non-H	H(model)	H(added)	Clashes	Symm-Clashes
1	A	4444	0	4421	136	0
2	A	15	0	0	1	0
3	A	21	0	12	13	0
4	A	278	0	0	21	0
All	All	4758	0	4433	136	0

The all-atom clashscore is defined as the number of clashes found per 1000 atoms (including hydrogen atoms). The all-atom clashscore for this structure is 15.

All (136) close contacts within the same asymmetric unit are listed below, sorted by their clash magnitude.

Atom-1	Atom-2	Interatomic distance (Å)	Clash overlap (Å)
1:A:493:ARG:HD3	3:A:600:TMP:O2	1.62	1.00
1:A:539:ASN:HD22	1:A:542:PHE:H	1.09	0.99
1:A:115:GLU:H	3:A:600:TMP:H53	1.29	0.98
1:A:115:GLU:H	3:A:600:TMP:C5M	1.77	0.97
1:A:333:ASN:HB3	4:A:1056:HOH:O	1.73	0.88
1:A:115:GLU:HB3	3:A:600:TMP:H53	1.61	0.82
1:A:250:ASN:ND2	1:A:253:GLN:H	1.78	0.82
1:A:161:ARG:HH21	3:A:600:TMP:H5'1	1.44	0.82
1:A:594:LEU:H	1:A:594:LEU:HD12	1.46	0.80
1:A:539:ASN:ND2	1:A:542:PHE:H	1.80	0.80
1:A:250:ASN:HD21	1:A:253:GLN:H	1.28	0.80
1:A:521:LYS:CD	1:A:521:LYS:H	1.94	0.79
1:A:410:SER:HB3	1:A:425:ARG:HH22	1.46	0.78
1:A:521:LYS:HD2	1:A:521:LYS:H	1.49	0.77
1:A:511:ARG:NH1	4:A:1087:HOH:O	2.13	0.75
1:A:115:GLU:N	3:A:600:TMP:H53	2.02	0.75
1:A:334:MET:SD	1:A:373:VAL:HG23	2.27	0.73
1:A:594:LEU:HA	4:A:1159:HOH:O	1.88	0.73
1:A:236:LEU:HD23	1:A:424:ALA:HB2	1.70	0.72
1:A:90:GLU:HB2	4:A:1238:HOH:O	1.89	0.71
1:A:533:ASN:ND2	1:A:587:MET:HA	2.04	0.71
1:A:220:TRP:HB2	1:A:248:PRO:HG2	1.74	0.69
1:A:189:ARG:HG3	1:A:189:ARG:HH11	1.58	0.69
1:A:356:ALA:HB1	4:A:1154:HOH:O	1.93	0.69
1:A:396:ARG:HD2	4:A:1060:HOH:O	1.93	0.69
1:A:430:ARG:HD2	4:A:1167:HOH:O	1.94	0.68
1:A:594:LEU:HD13	1:A:596:SER:OG	1.94	0.67
1:A:148:ARG:HD2	4:A:1051:HOH:O	1.93	0.67
1:A:407:LYS:HB2	1:A:430:ARG:HG2	1.77	0.67
1:A:184:TRP:HB3	1:A:189:ARG:HD2	1.76	0.66
1:A:197:GLN:HG2	1:A:503:THR:HG23	1.78	0.66
1:A:573:GLN:HG2	1:A:577:LYS:HE2	1.78	0.66
1:A:581:ASP:HB3	1:A:583:GLU:OE2	1.98	0.63
1:A:35:ARG:HE	1:A:122:HIS:HD2	1.46	0.63
1:A:273:ASP:HB3	4:A:1074:HOH:O	1.99	0.62
1:A:115:GLU:H	3:A:600:TMP:H51	1.60	0.61
1:A:493:ARG:HH22	1:A:551:ASP:CG	2.03	0.61
1:A:29:SER:O	1:A:31:VAL:HG23	2.01	0.61
1:A:321:ARG:HD3	1:A:495:SER:OG	2.01	0.61
1:A:303:LYS:HD3	4:A:1134:HOH:O	2.01	0.61
1:A:98:GLN:O	1:A:101:GLU:HG2	2.01	0.61
1:A:194:GLY:HA3	1:A:197:GLN:HB2	1.83	0.60

Continued on next page...

Continued from previous page...

Atom-1	Atom-2	Interatomic distance (Å)	Clash overlap (Å)
1:A:67:LEU:HD11	1:A:178:MET:HG2	1.82	0.60
1:A:521:LYS:N	1:A:521:LYS:HD2	2.17	0.59
1:A:528:ASP:O	1:A:532:GLU:HG3	2.02	0.59
1:A:31:VAL:O	1:A:89:LYS:HE3	2.02	0.59
1:A:168:ARG:NH1	3:A:600:TMP:O4	2.37	0.58
1:A:496:THR:O	1:A:500:ILE:HG13	2.04	0.58
1:A:165:GLN:NE2	4:A:1007:HOH:O	2.37	0.58
1:A:85:VAL:HG21	1:A:90:GLU:OE1	2.02	0.58
1:A:346:LYS:H	1:A:346:LYS:HD2	1.68	0.58
1:A:580:LYS:O	1:A:586:GLY:HA3	2.03	0.57
1:A:478:SER:H	1:A:481:SER:HB2	1.69	0.57
1:A:292:ALA:O	1:A:296:ARG:HB2	2.04	0.57
1:A:161:ARG:NH2	3:A:600:TMP:H5'1	2.18	0.57
1:A:535:ARG:NH1	2:A:1001:PO4:O1	2.39	0.56
1:A:197:GLN:CG	1:A:503:THR:HG23	2.37	0.55
1:A:115:GLU:CB	3:A:600:TMP:H53	2.35	0.55
1:A:537:LEU:H	1:A:574:GLN:HE22	1.54	0.55
1:A:539:ASN:HD21	1:A:541:ASP:HB2	1.71	0.55
1:A:269:LEU:HD13	4:A:1244:HOH:O	2.07	0.54
1:A:493:ARG:CD	3:A:600:TMP:O2	2.46	0.54
1:A:296:ARG:HD3	4:A:1114:HOH:O	2.07	0.54
1:A:533:ASN:HD21	1:A:587:MET:HA	1.71	0.54
1:A:189:ARG:HG3	1:A:189:ARG:NH1	2.22	0.54
1:A:186:LYS:C	1:A:187:ILE:HD12	2.28	0.54
1:A:35:ARG:HG2	1:A:83:TYR:HB3	1.90	0.53
1:A:291:GLN:HA	1:A:480:ALA:HB1	1.90	0.53
1:A:593:VAL:HG23	4:A:1146:HOH:O	2.09	0.52
1:A:63:GLU:HB3	1:A:76:TRP:CD2	2.45	0.52
1:A:548:ASN:O	1:A:552:GLN:HG3	2.10	0.52
1:A:536:GLU:OE1	1:A:570:ASP:HB3	2.09	0.52
1:A:537:LEU:O	1:A:537:LEU:HD23	2.10	0.51
1:A:69:ASN:HD22	1:A:69:ASN:N	2.08	0.50
1:A:63:GLU:HB3	1:A:76:TRP:CG	2.47	0.50
1:A:112:LEU:HD12	1:A:112:LEU:C	2.32	0.50
1:A:493:ARG:NE	1:A:547:GLU:OE1	2.45	0.50
1:A:392:GLN:HG3	4:A:1161:HOH:O	2.12	0.50
1:A:271:ARG:HH12	1:A:453:VAL:H	1.57	0.50
1:A:593:VAL:CG1	1:A:594:LEU:HD12	2.41	0.50
1:A:113:ASP:CG	3:A:600:TMP:H51	2.32	0.50
1:A:208:GLU:HG2	1:A:519:ALA:HB3	1.93	0.50
1:A:67:LEU:HD22	1:A:71:MET:CE	2.42	0.49

Continued on next page...

Continued from previous page...

Atom-1	Atom-2	Interatomic distance (Å)	Clash overlap (Å)
1:A:492:GLY:O	1:A:493:ARG:HG3	2.12	0.49
1:A:593:VAL:HG12	1:A:594:LEU:N	2.27	0.49
1:A:227:THR:HG22	1:A:228:THR:O	2.11	0.49
1:A:250:ASN:HD22	1:A:252:GLU:N	2.11	0.49
1:A:493:ARG:NH2	1:A:547:GLU:O	2.46	0.49
1:A:184:TRP:HA	1:A:188:ALA:O	2.12	0.49
1:A:141:GLU:HB3	1:A:318:THR:HG22	1.95	0.48
1:A:537:LEU:HD23	1:A:537:LEU:C	2.34	0.48
1:A:217:GLU:O	1:A:470:PHE:HA	2.14	0.47
1:A:525:ILE:O	1:A:529:ARG:HD3	2.14	0.47
1:A:271:ARG:NH1	1:A:453:VAL:H	2.13	0.47
1:A:112:LEU:HD12	1:A:113:ASP:N	2.30	0.47
1:A:115:GLU:HB3	3:A:600:TMP:C5M	2.39	0.46
1:A:261:LEU:HD21	1:A:420:PHE:CG	2.51	0.46
1:A:117:GLU:HG2	1:A:161:ARG:HB2	1.97	0.46
1:A:594:LEU:N	1:A:594:LEU:HD12	2.24	0.46
1:A:152:ASN:HD22	1:A:153:LYS:HG2	1.81	0.45
1:A:180:SER:HB2	1:A:181:PRO:HD3	1.98	0.45
1:A:8:VAL:O	1:A:29:SER:HA	2.17	0.45
1:A:124:ARG:HH11	1:A:124:ARG:HG2	1.81	0.45
1:A:181:PRO:HA	1:A:184:TRP:CE3	2.51	0.45
1:A:271:ARG:HD2	1:A:413:LEU:HD21	1.99	0.45
1:A:241:GLN:O	1:A:242:ASN:HB2	2.17	0.44
1:A:345:LYS:HD2	4:A:1195:HOH:O	2.18	0.44
1:A:34:ILE:O	1:A:85:VAL:HA	2.18	0.44
1:A:535:ARG:HG2	1:A:535:ARG:HH11	1.82	0.44
1:A:234:LEU:HD13	1:A:451:PRO:HD2	2.00	0.44
1:A:148:ARG:O	1:A:152:ASN:HB2	2.18	0.44
1:A:521:LYS:CE	4:A:1177:HOH:O	2.66	0.43
1:A:124:ARG:HG3	1:A:134:TYR:CE2	2.54	0.43
1:A:11:PRO:HD2	4:A:1229:HOH:O	2.18	0.43
1:A:187:ILE:HG22	1:A:191:LEU:HD11	2.00	0.43
1:A:86:LEU:HB2	1:A:89:LYS:HG3	1.99	0.43
1:A:220:TRP:CE2	1:A:468:GLN:HG3	2.54	0.43
1:A:158:ASN:CG	1:A:161:ARG:HG3	2.38	0.43
1:A:153:LYS:HB3	1:A:153:LYS:NZ	2.34	0.43
1:A:426:GLY:HA3	1:A:450:LEU:HG	1.99	0.43
1:A:22:GLY:HA3	4:A:1048:HOH:O	2.19	0.42
1:A:593:VAL:HG12	1:A:594:LEU:HD12	1.99	0.42
1:A:407:LYS:HE3	1:A:430:ARG:HD3	2.00	0.42
1:A:309:GLN:HA	1:A:320:MET:SD	2.60	0.42

Continued on next page...

Continued from previous page...

Atom-1	Atom-2	Interatomic distance (Å)	Clash overlap (Å)
1:A:187:ILE:HD12	1:A:187:ILE:N	2.35	0.42
1:A:302:LYS:HE2	1:A:306:MET:SD	2.59	0.42
1:A:373:VAL:HG22	1:A:398:PHE:HE2	1.85	0.42
1:A:64:ARG:NH1	4:A:1175:HOH:O	2.52	0.42
1:A:250:ASN:HD21	1:A:253:GLN:N	2.05	0.41
1:A:573:GLN:O	1:A:577:LYS:HG3	2.20	0.41
1:A:250:ASN:OD1	1:A:253:GLN:NE2	2.54	0.41
1:A:33:HIS:O	1:A:35:ARG:N	2.50	0.41
1:A:115:GLU:HG2	4:A:1151:HOH:O	2.21	0.40
1:A:98:GLN:O	1:A:102:LYS:HG2	2.21	0.40
1:A:250:ASN:HD22	1:A:252:GLU:H	1.69	0.40
1:A:167:ALA:O	1:A:171:MET:HG2	2.21	0.40

There are no symmetry-related clashes.

5.3 Torsion angles ⓘ

5.3.1 Protein backbone ⓘ

In the following table, the Percentiles column shows the percent Ramachandran outliers of the chain as a percentile score with respect to all X-ray entries followed by that with respect to entries of similar resolution.

The Analysed column shows the number of residues for which the backbone conformation was analysed, and the total number of residues.

Mol	Chain	Analysed	Favoured	Allowed	Outliers	Percentiles	
1	A	550/599 (92%)	526 (96%)	18 (3%)	6 (1%)	17	30

All (6) Ramachandran outliers are listed below:

Mol	Chain	Res	Type
1	A	592	MET
1	A	594	LEU
1	A	38	PRO
1	A	382	ASP
1	A	451	PRO
1	A	22	GLY

5.3.2 Protein sidechains ⓘ

In the following table, the Percentiles column shows the percent sidechain outliers of the chain as a percentile score with respect to all X-ray entries followed by that with respect to entries of similar resolution.

The Analysed column shows the number of residues for which the sidechain conformation was analysed, and the total number of residues.

Mol	Chain	Analysed	Rotameric	Outliers	Percentiles
1	A	474/507 (94%)	453 (96%)	21 (4%)	35 58

All (21) residues with a non-rotameric sidechain are listed below:

Mol	Chain	Res	Type
1	A	18	ASN
1	A	62	ASP
1	A	64	ARG
1	A	67	LEU
1	A	69	ASN
1	A	78	ASN
1	A	136	ARG
1	A	153	LYS
1	A	189	ARG
1	A	247	ARG
1	A	252	GLU
1	A	274	LYS
1	A	296	ARG
1	A	320	MET
1	A	346	LYS
1	A	354	GLN
1	A	430	ARG
1	A	437	VAL
1	A	521	LYS
1	A	549	SER
1	A	594	LEU

Some sidechains can be flipped to improve hydrogen bonding and reduce clashes. All (19) such sidechains are listed below:

Mol	Chain	Res	Type
1	A	69	ASN
1	A	122	HIS
1	A	152	ASN
1	A	165	GLN

Continued on next page...

Continued from previous page...

Mol	Chain	Res	Type
1	A	166	GLN
1	A	241	GLN
1	A	242	ASN
1	A	250	ASN
1	A	253	GLN
1	A	309	GLN
1	A	365	HIS
1	A	392	GLN
1	A	469	HIS
1	A	505	GLN
1	A	533	ASN
1	A	539	ASN
1	A	545	GLN
1	A	548	ASN
1	A	574	GLN

5.3.3 RNA [i](#)

There are no RNA molecules in this entry.

5.4 Non-standard residues in protein, DNA, RNA chains [i](#)

There are no non-standard protein/DNA/RNA residues in this entry.

5.5 Carbohydrates [i](#)

There are no carbohydrates in this entry.

5.6 Ligand geometry [i](#)

4 ligands are modelled in this entry.

In the following table, the Counts columns list the number of bonds (or angles) for which Mogul statistics could be retrieved, the number of bonds (or angles) that are observed in the model and the number of bonds (or angles) that are defined in the chemical component dictionary. The Link column lists molecule types, if any, to which the group is linked. The Z score for a bond length (or angle) is the number of standard deviations the observed value is removed from the expected value. A bond length (or angle) with $|Z| > 2$ is considered an outlier worth inspection. RMSZ is the root-mean-square of all Z scores of the bond lengths (or angles).

Mol	Type	Chain	Res	Link	Bond lengths			Bond angles		
					Counts	RMSZ	# Z > 2	Counts	RMSZ	# Z > 2
2	PO4	A	1001	-	4,4,4	1.20	0	6,6,6	0.27	0
2	PO4	A	1002	-	4,4,4	1.15	0	6,6,6	0.27	0
2	PO4	A	1003	-	4,4,4	1.18	0	6,6,6	0.27	0
3	TMP	A	600	-	17,22,22	1.73	4 (23%)	22,33,33	3.80	4 (18%)

In the following table, the Chirals column lists the number of chiral outliers, the number of chiral centers analysed, the number of these observed in the model and the number defined in the chemical component dictionary. Similar counts are reported in the Torsion and Rings columns. '-' means no outliers of that kind were identified.

Mol	Type	Chain	Res	Link	Chirals	Torsions	Rings
2	PO4	A	1001	-	-	0/0/0/0	0/0/0/0
2	PO4	A	1002	-	-	0/0/0/0	0/0/0/0
2	PO4	A	1003	-	-	0/0/0/0	0/0/0/0
3	TMP	A	600	-	1/1/4/4	0/6/22/22	0/2/2/2

All (4) bond length outliers are listed below:

Mol	Chain	Res	Type	Atoms	Z	Observed(Å)	Ideal(Å)
3	A	600	TMP	C5M-C5	-4.27	1.42	1.51
3	A	600	TMP	P-O2P	-2.40	1.46	1.54
3	A	600	TMP	P-O3P	-2.20	1.46	1.54
3	A	600	TMP	C4-N3	3.73	1.40	1.33

All (4) bond angle outliers are listed below:

Mol	Chain	Res	Type	Atoms	Z	Observed(°)	Ideal(°)
3	A	600	TMP	C5-C4-N3	-8.34	115.86	125.14
3	A	600	TMP	C2'-C1'-N1	6.33	129.56	114.16
3	A	600	TMP	O4'-C1'-N1	7.08	119.98	107.72
3	A	600	TMP	C4-N3-C2	12.11	125.71	115.25

All (1) chirality outliers are listed below:

Mol	Chain	Res	Type	Atom
3	A	600	TMP	C1'

There are no torsion outliers.

There are no ring outliers.

2 monomers are involved in 14 short contacts:

Mol	Chain	Res	Type	Clashes	Symm-Clashes
2	A	1001	PO4	1	0
3	A	600	TMP	13	0

5.7 Other polymers [i](#)

There are no such residues in this entry.

5.8 Polymer linkage issues [i](#)

There are no chain breaks in this entry.

6 Fit of model and data [i](#)

6.1 Protein, DNA and RNA chains [i](#)

EDS was not executed - this section will therefore be empty.

6.2 Non-standard residues in protein, DNA, RNA chains [i](#)

EDS was not executed - this section will therefore be empty.

6.3 Carbohydrates [i](#)

EDS was not executed - this section will therefore be empty.

6.4 Ligands [i](#)

EDS was not executed - this section will therefore be empty.

6.5 Other polymers [i](#)

EDS was not executed - this section will therefore be empty.