



Full wwPDB X-ray Structure Validation Report ⓘ

Feb 1, 2016 – 08:00 AM GMT

PDB ID : 3CZH
Title : Crystal structure of CYP2R1 in complex with vitamin D2
Authors : Strushkevich, N.V.; Tempel, W.; Gilep, A.A.; Loppnau, P.; Arrowsmith, C.H.;
Edwards, A.M.; Bountra, C.; Wilkstrom, M.; Bochkarev, A.; Park, H.; Struc-
tural Genomics Consortium (SGC)
Deposited on : 2008-04-29
Resolution : 2.30 Å(reported)

This is a Full wwPDB X-ray Structure Validation Report for a publicly released PDB entry.
We welcome your comments at validation@mail.wwpdb.org
A user guide is available at
<http://wwpdb.org/validation/2016/XrayValidationReportHelp>
with specific help available everywhere you see the ⓘ symbol.

The following versions of software and data (see [references ⓘ](#)) were used in the production of this report:

MolProbity : 4.02b-467
Mogul : 1.7 (RC4), CSD as536be (2015)
Xtriage (Phenix) : 1.9-1692
EDS : rb-20026688
Percentile statistics : 20151230.v01 (using entries in the PDB archive December 30th 2015)
Refmac : 5.8.0135
CCP4 : 6.5.0
Ideal geometry (proteins) : Engh & Huber (2001)
Ideal geometry (DNA, RNA) : Parkinson et al. (1996)
Validation Pipeline (wwPDB-VP) : trunk26865

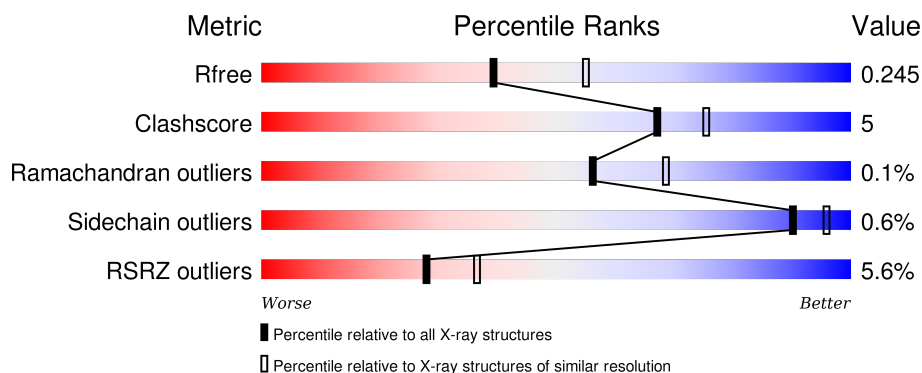
1 Overall quality at a glance ⓘ

The following experimental techniques were used to determine the structure:

X-RAY DIFFRACTION

The reported resolution of this entry is 2.30 Å.

Percentile scores (ranging between 0-100) for global validation metrics of the entry are shown in the following graphic. The table shows the number of entries on which the scores are based.



Metric	Whole archive (#Entries)	Similar resolution (#Entries, resolution range(Å))
R_{free}	91344	3852 (2.30-2.30)
Clashscore	102246	4452 (2.30-2.30)
Ramachandran outliers	100387	4410 (2.30-2.30)
Sidechain outliers	100360	4409 (2.30-2.30)
RSRZ outliers	91569	3857 (2.30-2.30)

The table below summarises the geometric issues observed across the polymeric chains and their fit to the electron density. The red, orange, yellow and green segments on the lower bar indicate the fraction of residues that contain outliers for ≥ 3 , 2, 1 and 0 types of geometric quality criteria. A grey segment represents the fraction of residues that are not modelled. The numeric value for each fraction is indicated below the corresponding segment, with a dot representing fractions $\leq 5\%$. The upper red bar (where present) indicates the fraction of residues that have poor fit to the electron density. The numeric value is given above the bar.

Mol	Chain	Length	Quality of chain
1	A	481	<div> <div>4%</div> <div>90%</div> <div>6%</div> </div>
1	B	481	<div> <div>7%</div> <div>89%</div> <div>7%</div> </div>

The following table lists non-polymeric compounds, carbohydrate monomers and non-standard residues in protein, DNA, RNA chains that are outliers for geometric or electron-density-fit criteria:

Mol	Type	Chain	Res	Chirality	Geometry	Clashes	Electron density
5	UNX	A	16	-	-	-	X
5	UNX	A	17	-	-	-	X
5	UNX	A	6	-	-	-	X
5	UNX	A	8	-	-	-	X
5	UNX	B	10	-	-	-	X
5	UNX	B	12	-	-	-	X
5	UNX	B	14	-	-	-	X
5	UNX	B	18	-	-	-	X
5	UNX	B	20	-	-	-	X
5	UNX	B	21	-	-	-	X
5	UNX	B	9	-	-	-	X

2 Entry composition

There are 6 unique types of molecules in this entry. The entry contains 7993 atoms, of which 0 are hydrogens and 0 are deuteriums.

In the tables below, the ZeroOcc column contains the number of atoms modelled with zero occupancy, the AltConf column contains the number of residues with at least one atom in alternate conformation and the Trace column contains the number of residues modelled with at most 2 atoms.

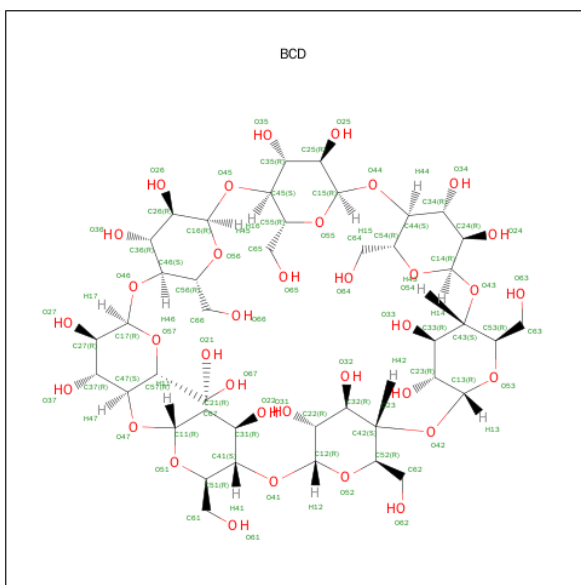
- Molecule 1 is a protein called Cytochrome P450 2R1.

Mol	Chain	Residues	Atoms					ZeroOcc	AltConf	Trace
1	A	465	Total	C	N	O	S	0	0	0
			3712	2419	611	664	18			
1	B	467	Total	C	N	O	S	0	0	0
			3732	2429	625	660	18			

There are 22 discrepancies between the modelled and reference sequences:

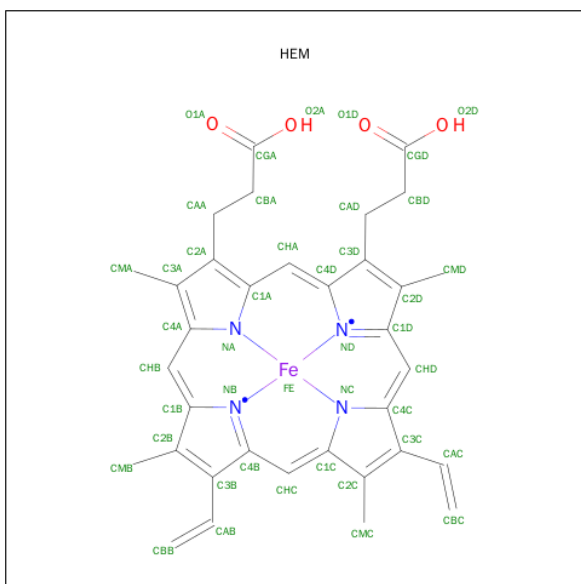
Chain	Residue	Modelled	Actual	Comment	Reference
A	27	MET	-	EXPRESSION TAG	UNP Q6V VX0
A	28	ALA	-	EXPRESSION TAG	UNP Q6V VX0
A	29	LYS	-	EXPRESSION TAG	UNP Q6V VX0
A	30	LYS	-	EXPRESSION TAG	UNP Q6V VX0
A	31	THR	-	EXPRESSION TAG	UNP Q6V VX0
A	502	HIS	-	EXPRESSION TAG	UNP Q6V VX0
A	503	HIS	-	EXPRESSION TAG	UNP Q6V VX0
A	504	HIS	-	EXPRESSION TAG	UNP Q6V VX0
A	505	HIS	-	EXPRESSION TAG	UNP Q6V VX0
A	506	HIS	-	EXPRESSION TAG	UNP Q6V VX0
A	507	HIS	-	EXPRESSION TAG	UNP Q6V VX0
B	27	MET	-	EXPRESSION TAG	UNP Q6V VX0
B	28	ALA	-	EXPRESSION TAG	UNP Q6V VX0
B	29	LYS	-	EXPRESSION TAG	UNP Q6V VX0
B	30	LYS	-	EXPRESSION TAG	UNP Q6V VX0
B	31	THR	-	EXPRESSION TAG	UNP Q6V VX0
B	502	HIS	-	EXPRESSION TAG	UNP Q6V VX0
B	503	HIS	-	EXPRESSION TAG	UNP Q6V VX0
B	504	HIS	-	EXPRESSION TAG	UNP Q6V VX0
B	505	HIS	-	EXPRESSION TAG	UNP Q6V VX0
B	506	HIS	-	EXPRESSION TAG	UNP Q6V VX0
B	507	HIS	-	EXPRESSION TAG	UNP Q6V VX0

- Molecule 2 is SUGAR (BETA-CYCLODEXTRIN) (three-letter code: BCD) (formula: C₄₂H₇₀O₃₅).



Mol	Chain	Residues	Atoms			ZeroOcc	AltConf
2	A	1	Total 77	C 42	O 35	0	0
2	B	1	Total 77	C 42	O 35	0	0

- Molecule 3 is PROTOPORPHYRIN IX CONTAINING FE (three-letter code: HEM) (formula: $C_{34}H_{32}FeN_4O_4$).



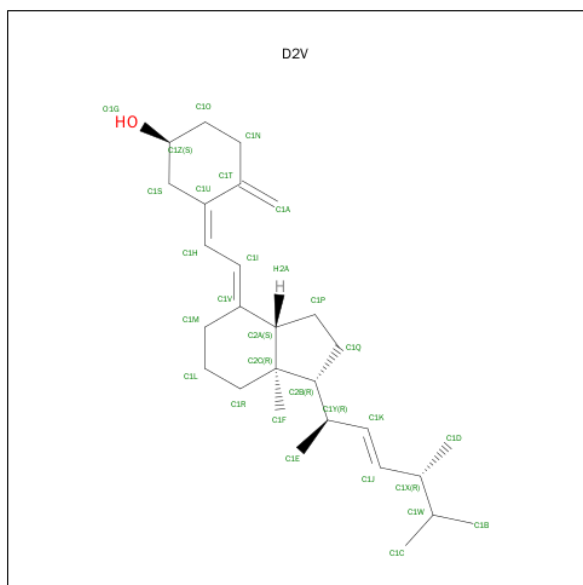
Mol	Chain	Residues	Atoms					ZeroOcc	AltConf
3	A	1	Total	C	Fe	N	O	0	1
			86	68	2	8	8		

Continued on next page...

Continued from previous page...

Mol	Chain	Residues	Atoms					ZeroOcc	AltConf
3	B	1	Total	C	Fe	N	O	0	1
			86	68	2	8	8		

- Molecule 4 is (3S,5Z,7E,22E)-9,10-SECOERGOSTA-5,7,10,22-TETRAEN-3-OL (three-letter code: D2V) (formula: C₂₈H₄₄O).



Mol	Chain	Residues	Atoms			ZeroOcc	AltConf
4	A	1	Total	C	O	0	0
			29	28	1		
4	B	1	Total	C	O	0	0
			29	28	1		

- Molecule 5 is UNKNOWN ATOM OR ION (three-letter code: UNX) (formula: X).

Mol	Chain	Residues	Atoms		ZeroOcc	AltConf
5	B	11	Total	X	0	0
			11	11		
5	A	10	Total	X	0	0
			10	10		

- Molecule 6 is water.

Mol	Chain	Residues	Atoms		ZeroOcc	AltConf
6	A	86	Total	O	0	0
			86	86		

Continued on next page...

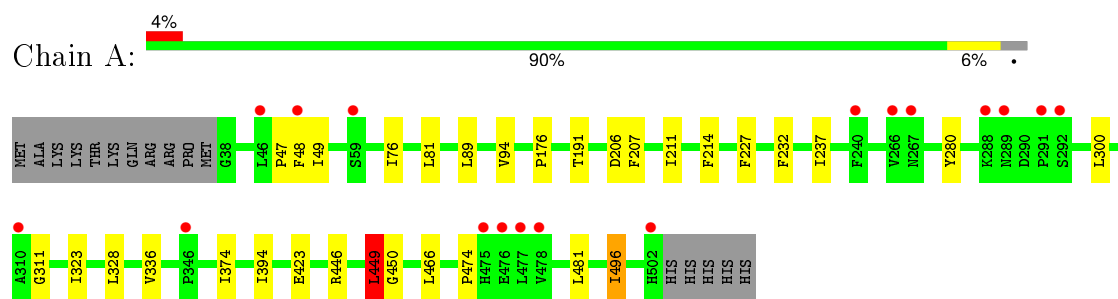
Continued from previous page...

Mol	Chain	Residues	Atoms		ZeroOcc	AltConf
6	B	58	Total	O	0	0
			58	58		

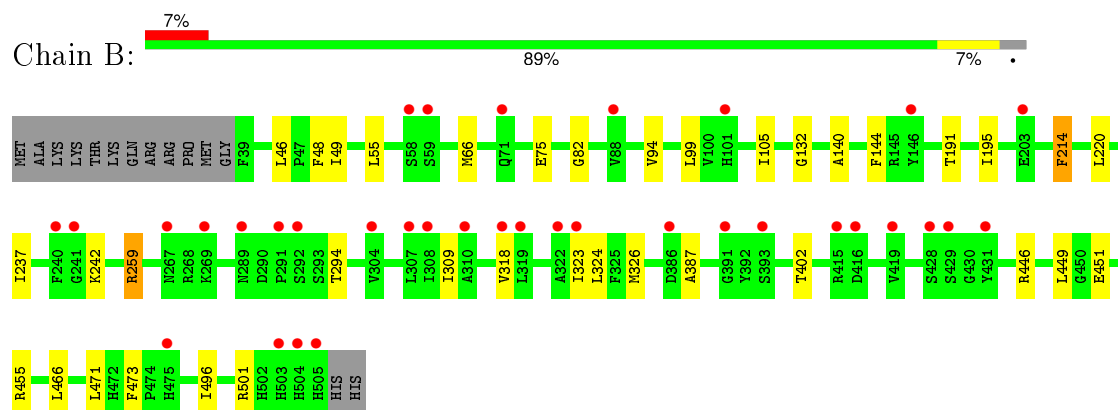
3 Residue-property plots [i](#)

These plots are drawn for all protein, RNA and DNA chains in the entry. The first graphic for a chain summarises the proportions of errors displayed in the second graphic. The second graphic shows the sequence view annotated by issues in geometry and electron density. Residues are color-coded according to the number of geometric quality criteria for which they contain at least one outlier: green = 0, yellow = 1, orange = 2 and red = 3 or more. A red dot above a residue indicates a poor fit to the electron density ($RSRZ > 2$). Stretches of 2 or more consecutive residues without any outlier are shown as a green connector. Residues present in the sample, but not in the model, are shown in grey.

• Molecule 1: Cytochrome P450 2R1



• Molecule 1: Cytochrome P450 2R1



4 Data and refinement statistics

Property	Value	Source
Space group	C 2 2 21	Depositor
Cell constants a, b, c, α , β , γ	137.36Å 163.39Å 152.29Å 90.00° 90.00° 90.00°	Depositor
Resolution (Å)	30.00 – 2.30 29.34 – 2.30	Depositor EDS
% Data completeness (in resolution range)	96.7 (30.00-2.30) 96.7 (29.34-2.30)	Depositor EDS
R_{merge}	0.10	Depositor
R_{sym}	(Not available)	Depositor
$\langle I/\sigma(I) \rangle$ ¹	3.04 (at 2.31Å)	Xtriage
Refinement program	REFMAC 5.3.0037	Depositor
R, R_{free}	0.205 , 0.231 0.216 , 0.245	Depositor DCC
R_{free} test set	2215 reflections (3.11%)	DCC
Wilson B-factor (Å ²)	41.5	Xtriage
Anisotropy	0.118	Xtriage
Bulk solvent k_{sol} (e/Å ³), B_{sol} (Å ²)	0.37 , 61.5	EDS
Estimated twinning fraction	No twinning to report.	Xtriage
L-test for twinning ²	$\langle L \rangle = 0.50$, $\langle L^2 \rangle = 0.33$	Xtriage
Outliers	0 of 73363 reflections	Xtriage
F_o, F_c correlation	0.95	EDS
Total number of atoms	7993	wwPDB-VP
Average B, all atoms (Å ²)	45.0	wwPDB-VP

Xtriage's analysis on translational NCS is as follows: *The largest off-origin peak in the Patterson function is 2.94% of the height of the origin peak. No significant pseudotranslation is detected.*

¹Intensities estimated from amplitudes.

²Theoretical values of $\langle |L| \rangle$, $\langle L^2 \rangle$ for acentric reflections are 0.5, 0.375 respectively for untwinned datasets, and 0.333, 0.2 for perfectly twinned datasets.

5 Model quality ⓘ

5.1 Standard geometry ⓘ

Bond lengths and bond angles in the following residue types are not validated in this section: BCD, HEM, D2V, UNX

The Z score for a bond length (or angle) is the number of standard deviations the observed value is removed from the expected value. A bond length (or angle) with $|Z| > 5$ is considered an outlier worth inspection. RMSZ is the root-mean-square of all Z scores of the bond lengths (or angles).

Mol	Chain	Bond lengths		Bond angles	
		RMSZ	$\# Z > 5$	RMSZ	$\# Z > 5$
1	A	0.75	2/3821 (0.1%)	0.62	3/5189 (0.1%)
1	B	0.66	0/3844	0.59	1/5223 (0.0%)
All	All	0.71	2/7665 (0.0%)	0.60	4/10412 (0.0%)

All (2) bond length outliers are listed below:

Mol	Chain	Res	Type	Atoms	Z	Observed(Å)	Ideal(Å)
1	A	423	GLU	CG-CD	7.97	1.64	1.51
1	A	423	GLU	CB-CG	5.08	1.61	1.52

All (4) bond angle outliers are listed below:

Mol	Chain	Res	Type	Atoms	Z	Observed(°)	Ideal(°)
1	A	446	ARG	NE-CZ-NH2	-8.49	116.05	120.30
1	A	449	LEU	CA-CB-CG	6.48	130.19	115.30
1	A	446	ARG	NE-CZ-NH1	5.76	123.18	120.30
1	B	446	ARG	NE-CZ-NH2	-5.76	117.42	120.30

There are no chirality outliers.

There are no planarity outliers.

5.2 Too-close contacts ⓘ

In the following table, the Non-H and H(model) columns list the number of non-hydrogen atoms and hydrogen atoms in the chain respectively. The H(added) column lists the number of hydrogen atoms added and optimized by MolProbity. The Clashes column lists the number of clashes within the asymmetric unit, whereas Symm-Clashes lists symmetry related clashes.

Mol	Chain	Non-H	H(model)	H(added)	Clashes	Symm-Clashes
1	A	3712	0	3588	27	0
1	B	3732	0	3590	32	0
2	A	77	0	70	0	0
2	B	77	0	70	0	0
3	A	86	0	60	12	0
3	B	86	0	60	13	0
4	A	29	0	44	1	0
4	B	29	0	44	1	0
5	A	10	0	0	0	0
5	B	11	0	0	0	0
6	A	86	0	0	1	0
6	B	58	0	0	0	0
All	All	7993	0	7526	74	0

The all-atom clashscore is defined as the number of clashes found per 1000 atoms (including hydrogen atoms). The all-atom clashscore for this structure is 5.

All (74) close contacts within the same asymmetric unit are listed below, sorted by their clash magnitude.

Atom-1	Atom-2	Interatomic distance (Å)	Clash overlap (Å)
1:A:237:ILE:HD11	1:B:237:ILE:HD11	1.66	0.78
3:B:601[A]:HEM:HBB2	3:B:601[A]:HEM:HMB2	1.68	0.75
3:B:601[B]:HEM:HBC2	3:B:601[B]:HEM:HMC1	1.69	0.74
3:B:601[B]:HEM:HMB2	3:B:601[B]:HEM:HBB2	1.73	0.71
1:A:323:ILE:HG22	1:A:496:ILE:HD12	1.72	0.70
3:A:601[B]:HEM:HMC1	3:A:601[B]:HEM:HBC2	1.75	0.69
3:B:601[A]:HEM:HMC2	3:B:601[A]:HEM:HBC2	1.76	0.68
3:A:601[A]:HEM:HMC2	3:A:601[A]:HEM:HBC2	1.78	0.66
1:B:451:GLU:O	1:B:455:ARG:HG3	1.95	0.66
3:A:601[A]:HEM:HMB1	3:A:601[A]:HEM:HBB2	1.77	0.65
1:B:75:GLU:HB3	1:B:94:VAL:HG21	1.78	0.65
1:A:237:ILE:HD11	1:B:237:ILE:CD1	2.26	0.64
3:A:601[B]:HEM:HBB2	3:A:601[B]:HEM:HMB2	1.81	0.63
1:B:220:LEU:HD22	1:B:242:LYS:HB3	1.81	0.61
4:A:602:D2V:H1RA	4:A:602:D2V:H1E	1.80	0.61
1:A:48:PHE:CE1	1:A:232:PHE:CE2	2.88	0.61
1:A:323:ILE:CG2	1:A:496:ILE:HD12	2.30	0.60
1:A:237:ILE:CD1	1:B:237:ILE:HD11	2.31	0.58
1:B:140:ALA:HB3	1:B:449:LEU:HD11	1.84	0.58
1:B:214:PHE:HB3	1:B:309:ILE:HD13	1.85	0.57
4:B:602:D2V:H1E	4:B:602:D2V:H1RA	1.86	0.57
1:A:323:ILE:HG22	1:A:496:ILE:CD1	2.34	0.57

Continued on next page...

Continued from previous page...

Atom-1	Atom-2	Interatomic distance (Å)	Clash overlap (Å)
1:A:450:GLY:HA3	3:A:601[B]:HEM:C2B	2.40	0.57
3:B:601[A]:HEM:HBA2	3:B:601[A]:HEM:HHA	1.88	0.56
1:B:144:PHE:CE2	3:B:601[A]:HEM:HBC1	2.41	0.56
1:B:318:VAL:HG21	3:B:601[A]:HEM:CBB	2.38	0.54
1:B:323:ILE:HG22	1:B:496:ILE:HD12	1.89	0.53
1:A:176:PRO:HB3	1:A:474:PRO:HG3	1.91	0.53
1:B:324:LEU:HD12	1:B:473:PHE:CZ	2.44	0.53
1:B:323:ILE:CG2	1:B:496:ILE:HD12	2.39	0.53
1:B:132:GLY:HA2	1:B:294:THR:HG21	1.91	0.51
3:B:601[B]:HEM:HBC2	3:B:601[B]:HEM:CMC	2.39	0.50
1:B:99:LEU:HD11	1:B:402:THR:HG21	1.92	0.50
3:B:601[A]:HEM:HBB2	3:B:601[A]:HEM:CMB	2.38	0.50
3:B:601[B]:HEM:CMB	3:B:601[B]:HEM:HBB2	2.42	0.50
1:A:47:PRO:O	1:A:48:PHE:HB3	2.11	0.50
1:B:55:LEU:HD11	1:B:66:MET:CE	2.43	0.49
1:B:191:THR:CG2	1:B:195:ILE:HD12	2.43	0.48
1:B:105:ILE:HG21	1:B:387:ALA:HB2	1.95	0.48
1:B:318:VAL:HG21	3:B:601[A]:HEM:HBB1	1.96	0.48
1:A:48:PHE:CD2	1:A:49:ILE:HG23	2.48	0.48
1:B:75:GLU:CB	1:B:94:VAL:HG21	2.44	0.46
3:A:601[B]:HEM:CMC	3:A:601[B]:HEM:HBC2	2.44	0.46
1:B:55:LEU:HD11	1:B:66:MET:HE3	1.98	0.45
3:B:601[A]:HEM:HBC2	3:B:601[A]:HEM:CMC	2.45	0.45
3:A:601[A]:HEM:CMB	3:A:601[A]:HEM:HBB2	2.47	0.45
1:A:311:GLY:HA2	3:A:601[A]:HEM:CMC	2.46	0.45
1:B:140:ALA:CB	1:B:449:LEU:HD11	2.47	0.44
1:B:323:ILE:HG22	1:B:496:ILE:CD1	2.47	0.44
1:B:46:LEU:CD1	1:B:49:ILE:HD11	2.48	0.44
1:A:280:TYR:CG	1:A:300:LEU:HD13	2.53	0.43
1:A:237:ILE:CG1	1:B:237:ILE:HG13	2.48	0.43
1:A:449:LEU:HD13	3:A:601[A]:HEM:CMD	2.49	0.43
1:A:81:LEU:HD13	1:A:227:PHE:CE2	2.53	0.43
3:A:601[A]:HEM:HBC2	3:A:601[A]:HEM:CMC	2.47	0.43
1:B:323:ILE:HG23	1:B:471:LEU:HD13	2.00	0.43
1:A:336:VAL:HG11	1:A:466:LEU:HD12	2.01	0.42
1:B:48:PHE:O	1:B:82:GLY:HA2	2.19	0.42
1:A:374:ILE:HD12	1:A:374:ILE:N	2.34	0.42
3:B:601[B]:HEM:HHA	3:B:601[B]:HEM:HBD2	2.02	0.41
1:B:46:LEU:HD12	1:B:49:ILE:HD11	2.01	0.41
1:A:76:ILE:HD11	1:A:394:ILE:HD11	2.03	0.41
1:A:48:PHE:HD2	1:A:49:ILE:HG23	1.85	0.41

Continued on next page...

Continued from previous page...

Atom-1	Atom-2	Interatomic distance (Å)	Clash overlap (Å)
1:A:191:THR:HG23	6:A:642:HOH:O	2.20	0.41
1:A:207:PHE:CE2	1:A:211:ILE:HD12	2.56	0.41
1:B:326:MET:HG3	1:B:466:LEU:HD11	2.03	0.41
1:A:206:ASP:OD1	1:B:259:ARG:NH2	2.52	0.41
3:A:601[B]:HEM:HBB2	3:A:601[B]:HEM:CMB	2.50	0.41
1:A:449:LEU:HD13	3:A:601[A]:HEM:HMD2	2.02	0.41
1:A:323:ILE:CG2	1:A:496:ILE:CD1	2.95	0.40
1:B:324:LEU:HD12	1:B:473:PHE:HZ	1.86	0.40
1:B:324:LEU:HD12	1:B:473:PHE:CE1	2.57	0.40
1:A:328:LEU:HD22	1:A:481:LEU:HD11	2.04	0.40
1:A:89:LEU:HD22	1:A:94:VAL:HG12	2.03	0.40

There are no symmetry-related clashes.

5.3 Torsion angles [i](#)

5.3.1 Protein backbone [i](#)

In the following table, the Percentiles column shows the percent Ramachandran outliers of the chain as a percentile score with respect to all X-ray entries followed by that with respect to entries of similar resolution.

The Analysed column shows the number of residues for which the backbone conformation was analysed, and the total number of residues.

Mol	Chain	Analysed	Favoured	Allowed	Outliers	Percentiles	
1	A	463/481 (96%)	451 (97%)	12 (3%)	0	100	100
1	B	465/481 (97%)	454 (98%)	10 (2%)	1 (0%)	52	64
All	All	928/962 (96%)	905 (98%)	22 (2%)	1 (0%)	56	68

All (1) Ramachandran outliers are listed below:

Mol	Chain	Res	Type
1	B	501	ARG

5.3.2 Protein sidechains [i](#)

In the following table, the Percentiles column shows the percent sidechain outliers of the chain as a percentile score with respect to all X-ray entries followed by that with respect to entries of similar resolution.

The Analysed column shows the number of residues for which the sidechain conformation was analysed, and the total number of residues.

Mol	Chain	Analysed	Rotameric	Outliers	Percentiles	
1	A	393/424 (93%)	390 (99%)	3 (1%)	86	94
1	B	392/424 (92%)	390 (100%)	2 (0%)	92	97
All	All	785/848 (93%)	780 (99%)	5 (1%)	90	96

All (5) residues with a non-rotameric sidechain are listed below:

Mol	Chain	Res	Type
1	A	214	PHE
1	A	449	LEU
1	A	496	ILE
1	B	214	PHE
1	B	259	ARG

Some sidechains can be flipped to improve hydrogen bonding and reduce clashes. There are no such sidechains identified.

5.3.3 RNA [i](#)

There are no RNA molecules in this entry.

5.4 Non-standard residues in protein, DNA, RNA chains [i](#)

There are no non-standard protein/DNA/RNA residues in this entry.

5.5 Carbohydrates [i](#)

There are no carbohydrates in this entry.

5.6 Ligand geometry [i](#)

Of 29 ligands modelled in this entry, 21 are unknown - leaving 8 for Mogul analysis.

In the following table, the Counts columns list the number of bonds (or angles) for which Mogul statistics could be retrieved, the number of bonds (or angles) that are observed in the model and the number of bonds (or angles) that are defined in the chemical component dictionary. The Link column lists molecule types, if any, to which the group is linked. The Z score for a bond length (or angle) is the number of standard deviations the observed value is removed from the expected

value. A bond length (or angle) with $|Z| > 2$ is considered an outlier worth inspection. RMSZ is the root-mean-square of all Z scores of the bond lengths (or angles).

Mol	Type	Chain	Res	Link	Bond lengths			Bond angles		
					Counts	RMSZ	$\# Z > 2$	Counts	RMSZ	$\# Z > 2$
3	HEM	A	601[A]	1	30,50,50	2.18	8 (26%)	24,82,82	2.43	9 (37%)
3	HEM	A	601[B]	1	30,50,50	2.24	10 (33%)	24,82,82	2.37	9 (37%)
4	D2V	A	602	-	29,31,31	1.43	4 (13%)	38,45,45	1.72	7 (18%)
2	BCD	A	603	-	84,84,84	0.56	0	126,126,126	1.15	11 (8%)
3	HEM	B	601[A]	1	30,50,50	2.16	9 (30%)	24,82,82	2.34	8 (33%)
3	HEM	B	601[B]	1	30,50,50	2.27	11 (36%)	24,82,82	2.28	9 (37%)
4	D2V	B	602	-	29,31,31	1.42	6 (20%)	38,45,45	1.55	7 (18%)
2	BCD	B	603	-	84,84,84	0.62	0	126,126,126	1.11	9 (7%)

In the following table, the Chirals column lists the number of chiral outliers, the number of chiral centers analysed, the number of these observed in the model and the number defined in the chemical component dictionary. Similar counts are reported in the Torsion and Rings columns. '-' means no outliers of that kind were identified.

Mol	Type	Chain	Res	Link	Chirals	Torsions	Rings
3	HEM	A	601[A]	1	-	0/10/54/54	0/0/8/8
3	HEM	A	601[B]	1	-	0/10/54/54	0/0/8/8
4	D2V	A	602	-	-	0/18/59/59	0/3/3/3
2	BCD	A	603	-	-	0/42/182/182	0/0/8/8
3	HEM	B	601[A]	1	-	0/10/54/54	0/0/8/8
3	HEM	B	601[B]	1	-	0/10/54/54	0/0/8/8
4	D2V	B	602	-	-	0/18/59/59	0/3/3/3
2	BCD	B	603	-	-	0/42/182/182	0/0/8/8

All (48) bond length outliers are listed below:

Mol	Chain	Res	Type	Atoms	Z	Observed(Å)	Ideal(Å)
3	B	601[B]	HEM	C3B-C4B	-7.17	1.45	1.51
3	A	601[A]	HEM	C3B-C4B	-6.40	1.46	1.51
3	A	601[B]	HEM	C3B-C4B	-6.17	1.46	1.51
3	B	601[A]	HEM	C3B-C4B	-6.14	1.46	1.51
3	B	601[A]	HEM	C3D-C4D	-5.63	1.44	1.51
3	A	601[A]	HEM	C3D-C4D	-5.37	1.44	1.51
3	A	601[B]	HEM	C3D-C4D	-5.15	1.45	1.51
3	B	601[B]	HEM	C3D-C4D	-4.95	1.45	1.51
3	B	601[A]	HEM	C2C-C1C	-3.70	1.45	1.52
3	A	601[B]	HEM	C2C-C1C	-3.55	1.45	1.52
3	B	601[B]	HEM	C2C-C1C	-3.29	1.46	1.52

Continued on next page...

Continued from previous page...

Mol	Chain	Res	Type	Atoms	Z	Observed(Å)	Ideal(Å)
3	A	601[A]	HEM	C2C-C1C	-3.27	1.46	1.52
4	B	602	D2V	C2C-C2A	-2.78	1.51	1.56
3	B	601[B]	HEM	C2D-C1D	-2.24	1.44	1.51
3	B	601[A]	HEM	C2D-C1D	-2.23	1.44	1.51
3	B	601[B]	HEM	C2B-C1B	-2.21	1.44	1.51
3	A	601[B]	HEM	C2D-C1D	-2.01	1.45	1.51
3	B	601[B]	HEM	C3B-CAB	2.05	1.55	1.51
4	B	602	D2V	C1K-C1J	2.10	1.39	1.32
4	A	602	D2V	C1O-C1Z	2.13	1.57	1.51
4	B	602	D2V	C1S-C1U	2.17	1.55	1.51
3	A	601[B]	HEM	FE-NB	2.17	2.09	1.97
3	A	601[B]	HEM	C3C-CAC	2.21	1.55	1.51
3	A	601[B]	HEM	CMA-C3A	2.26	1.56	1.51
3	B	601[A]	HEM	C3C-CAC	2.26	1.55	1.51
3	A	601[A]	HEM	FE-NB	2.26	2.09	1.97
3	B	601[B]	HEM	C4C-NC	2.29	1.38	1.36
4	B	602	D2V	C1O-C1Z	2.33	1.58	1.51
3	B	601[A]	HEM	C1C-NC	2.40	1.39	1.36
3	B	601[A]	HEM	CAA-C2A	2.41	1.56	1.52
3	A	601[A]	HEM	C3C-CAC	2.41	1.55	1.51
4	B	602	D2V	C1A-C1T	2.47	1.38	1.32
3	B	601[B]	HEM	C1C-NC	2.52	1.39	1.36
3	B	601[A]	HEM	C3B-CAB	2.53	1.56	1.51
3	B	601[B]	HEM	C3C-CAC	2.56	1.56	1.51
4	A	602	D2V	C1X-C1J	2.57	1.58	1.51
4	A	602	D2V	C1A-C1T	2.64	1.38	1.32
3	A	601[B]	HEM	C3B-CAB	2.65	1.56	1.51
3	A	601[A]	HEM	C4C-NC	2.67	1.39	1.36
3	A	601[A]	HEM	C3B-CAB	2.73	1.56	1.51
3	B	601[B]	HEM	FE-ND	3.02	2.13	1.97
3	B	601[A]	HEM	FE-NB	3.04	2.13	1.97
3	A	601[A]	HEM	FE-ND	3.05	2.13	1.97
4	B	602	D2V	C1I-C1V	3.16	1.40	1.34
3	B	601[B]	HEM	FE-NC	3.20	2.08	1.95
3	A	601[B]	HEM	FE-ND	3.51	2.16	1.97
4	A	602	D2V	C1I-C1V	3.57	1.41	1.34
3	A	601[B]	HEM	FE-NC	3.93	2.11	1.95

All (69) bond angle outliers are listed below:

Mol	Chain	Res	Type	Atoms	Z	Observed(°)	Ideal(°)
4	A	602	D2V	C2C-C2B-C1Y	-5.48	112.07	119.28

Continued on next page...

Continued from previous page...

Mol	Chain	Res	Type	Atoms	Z	Observed(°)	Ideal(°)
4	A	602	D2V	C1P-C2A-C2C	-4.31	100.30	104.21
4	B	602	D2V	C1P-C2A-C1V	-4.25	114.59	120.68
4	B	602	D2V	C2C-C2B-C1Y	-3.99	114.03	119.28
3	A	601[A]	HEM	CAA-CBA-CGA	-3.61	106.12	112.75
4	A	602	D2V	C1L-C1R-C2C	-3.08	109.18	113.17
4	A	602	D2V	C1P-C2A-C1V	-3.08	116.28	120.68
3	B	601[B]	HEM	CBA-CAA-C2A	-2.82	107.48	112.53
4	A	602	D2V	C1Q-C1P-C2A	-2.80	100.73	105.39
4	B	602	D2V	C1M-C1V-C1I	-2.71	121.67	125.36
4	B	602	D2V	C1Q-C1P-C2A	-2.64	101.00	105.39
4	A	602	D2V	C1M-C1V-C1I	-2.54	121.90	125.36
3	A	601[B]	HEM	CBA-CAA-C2A	-2.53	108.00	112.53
3	B	601[A]	HEM	CAA-CBA-CGA	-2.46	108.24	112.75
2	B	603	BCD	C11-O51-C51	-2.34	109.20	113.75
4	A	602	D2V	C1X-C1J-C1K	-2.21	118.51	125.65
4	B	602	D2V	C1R-C2C-C2B	-2.20	112.65	116.56
4	B	602	D2V	C1H-C1I-C1V	-2.20	122.52	125.87
3	A	601[A]	HEM	C3B-C4B-NB	-2.06	107.69	111.63
3	B	601[B]	HEM	C3B-C4B-NB	-2.04	107.72	111.63
3	B	601[A]	HEM	CBD-CAD-C3D	-2.01	107.70	113.55
2	A	603	BCD	O57-C57-C47	2.00	113.97	109.75
2	A	603	BCD	C27-C37-C47	2.05	114.11	109.60
2	A	603	BCD	C13-C23-C33	2.06	114.03	109.97
2	A	603	BCD	C14-C24-C34	2.06	114.03	109.97
3	B	601[B]	HEM	C3B-C4B-CHC	2.08	126.09	123.16
3	A	601[B]	HEM	C2C-C1C-CHC	2.15	126.95	123.68
2	B	603	BCD	C12-C22-C32	2.15	114.21	109.97
2	B	603	BCD	C22-C32-C42	2.21	114.45	109.60
3	A	601[B]	HEM	C3B-C4B-CHC	2.23	126.30	123.16
2	A	603	BCD	C37-C47-C57	2.31	116.05	110.84
4	B	602	D2V	C1R-C1L-C1M	2.33	117.40	111.53
2	A	603	BCD	C24-C34-C44	2.40	114.88	109.60
2	B	603	BCD	C14-C24-C34	2.44	114.77	109.97
2	B	603	BCD	C24-C34-C44	2.46	114.99	109.60
2	B	603	BCD	C31-C41-C51	2.52	116.54	110.84
3	B	601[B]	HEM	C2D-C3D-C4D	2.53	105.79	101.50
2	A	603	BCD	C23-C33-C43	2.57	115.24	109.60
3	A	601[B]	HEM	CMD-C2D-C3D	2.62	125.96	114.35
3	A	601[A]	HEM	C3B-C4B-CHC	2.67	126.92	123.16
3	A	601[B]	HEM	C2D-C3D-C4D	2.72	106.11	101.50
3	B	601[B]	HEM	CMD-C2D-C3D	2.82	126.81	114.35
3	A	601[A]	HEM	C2D-C3D-C4D	2.85	106.32	101.50

Continued on next page...

Continued from previous page...

Mol	Chain	Res	Type	Atoms	Z	Observed(°)	Ideal(°)
3	B	601[A]	HEM	C2D-C3D-C4D	2.85	106.33	101.50
3	A	601[A]	HEM	CMD-C2D-C3D	2.87	127.04	114.35
3	B	601[A]	HEM	CMD-C2D-C3D	2.96	127.46	114.35
2	B	603	BCD	O47-C11-C21	3.04	115.50	108.10
2	B	603	BCD	O51-C11-C21	3.06	116.56	110.28
2	A	603	BCD	C15-C25-C35	3.21	116.31	109.97
2	A	603	BCD	C25-C35-C45	3.33	116.92	109.60
2	A	603	BCD	O47-C11-C21	3.68	117.05	108.10
3	B	601[B]	HEM	CAD-C3D-C2D	4.05	124.85	113.22
3	A	601[B]	HEM	CAD-C3D-C2D	4.07	124.91	113.22
3	B	601[B]	HEM	CMC-C2C-C3C	4.23	127.10	116.53
3	A	601[A]	HEM	CAD-C3D-C4D	4.30	127.65	112.47
3	B	601[A]	HEM	CAD-C3D-C2D	4.36	125.75	113.22
3	B	601[A]	HEM	CAD-C3D-C4D	4.38	127.92	112.47
3	B	601[A]	HEM	CMB-C2B-C3B	4.41	127.55	116.53
2	B	603	BCD	O47-C11-O51	4.42	121.86	110.68
3	A	601[A]	HEM	CAD-C3D-C2D	4.46	126.03	113.22
3	B	601[A]	HEM	CMC-C2C-C3C	4.49	127.74	116.53
3	A	601[A]	HEM	CMB-C2B-C3B	4.53	127.83	116.53
3	A	601[B]	HEM	CAD-C3D-C4D	4.67	128.95	112.47
3	A	601[B]	HEM	CMC-C2C-C3C	4.70	128.26	116.53
3	A	601[A]	HEM	CMC-C2C-C3C	4.73	128.34	116.53
3	B	601[B]	HEM	CAD-C3D-C4D	4.78	129.34	112.47
3	B	601[B]	HEM	CMB-C2B-C3B	4.86	128.66	116.53
2	A	603	BCD	O47-C11-O51	5.06	123.49	110.68
3	A	601[B]	HEM	CMB-C2B-C3B	5.09	129.25	116.53

There are no chirality outliers.

There are no torsion outliers.

There are no ring outliers.

6 monomers are involved in 27 short contacts:

Mol	Chain	Res	Type	Clashes	Symm-Clashes
3	A	601[A]	HEM	7	0
3	A	601[B]	HEM	5	0
4	A	602	D2V	1	0
3	B	601[A]	HEM	8	0
3	B	601[B]	HEM	5	0
4	B	602	D2V	1	0

5.7 Other polymers [i](#)

There are no such residues in this entry.

5.8 Polymer linkage issues [i](#)

There are no chain breaks in this entry.

6 Fit of model and data ⓘ

6.1 Protein, DNA and RNA chains ⓘ

In the following table, the column labelled ‘#RSRZ> 2’ contains the number (and percentage) of RSRZ outliers, followed by percent RSRZ outliers for the chain as percentile scores relative to all X-ray entries and entries of similar resolution. The OWAB column contains the minimum, median, 95th percentile and maximum values of the occupancy-weighted average B-factor per residue. The column labelled ‘Q< 0.9’ lists the number of (and percentage) of residues with an average occupancy less than 0.9.

Mol	Chain	Analysed	<RSRZ>	#RSRZ>2	OWAB(Å ²)	Q<0.9
1	A	465/481 (96%)	0.10	17 (3%) 45 54	25, 40, 59, 80	0
1	B	467/481 (97%)	0.35	35 (7%) 17 24	30, 46, 68, 86	0
All	All	932/962 (96%)	0.23	52 (5%) 28 36	25, 43, 66, 86	0

All (52) RSRZ outliers are listed below:

Mol	Chain	Res	Type	RSRZ
1	A	502	HIS	6.5
1	A	291	PRO	6.3
1	B	289	ASN	5.3
1	B	291	PRO	4.9
1	B	429	SER	4.8
1	B	505	HIS	4.7
1	B	428	SER	4.3
1	A	240	PHE	3.9
1	B	391	GLY	3.9
1	A	289	ASN	3.9
1	A	346	PRO	3.8
1	A	288	LYS	3.8
1	A	267	ASN	3.8
1	B	240	PHE	3.4
1	A	476	GLU	3.4
1	B	431	TYR	3.3
1	B	416	ASP	3.0
1	B	203	GLU	3.0
1	A	478	VAL	2.9
1	B	318	VAL	2.9
1	B	269	LYS	2.9
1	A	266	VAL	2.8
1	B	59	SER	2.8
1	B	58	SER	2.7

Continued on next page...

Continued from previous page...

Mol	Chain	Res	Type	RSRZ
1	B	386	ASP	2.7
1	B	307	LEU	2.6
1	B	292	SER	2.6
1	B	241	GLY	2.6
1	B	304	VAL	2.6
1	B	419	VAL	2.6
1	B	393	SER	2.6
1	A	46	LEU	2.5
1	B	308	ILE	2.5
1	A	292	SER	2.5
1	B	310	ALA	2.4
1	B	71	GLN	2.4
1	B	415	ARG	2.4
1	B	267	ASN	2.3
1	B	319	LEU	2.3
1	A	475	HIS	2.2
1	B	146	TYR	2.2
1	B	475	HIS	2.2
1	B	323	ILE	2.2
1	B	504	HIS	2.2
1	B	88	VAL	2.1
1	A	48	PHE	2.1
1	A	310	ALA	2.1
1	A	59	SER	2.1
1	B	101	HIS	2.0
1	B	503	HIS	2.0
1	A	477	LEU	2.0
1	B	322	ALA	2.0

6.2 Non-standard residues in protein, DNA, RNA chains [i](#)

There are no non-standard protein/DNA/RNA residues in this entry.

6.3 Carbohydrates [i](#)

There are no carbohydrates in this entry.

6.4 Ligands [i](#)

In the following table, the Atoms column lists the number of modelled atoms in the group and the number defined in the chemical component dictionary. LLDF column lists the quality of electron

density of the group with respect to its neighbouring residues in protein, DNA or RNA chains. The B-factors column lists the minimum, median, 95th percentile and maximum values of B factors of atoms in the group. The column labelled 'Q< 0.9' lists the number of atoms with occupancy less than 0.9.

Mol	Type	Chain	Res	Atoms	RSCC	RSR	LLDF	B-factors(Å ²)	Q<0.9
5	UNX	B	9	1/1	0.34	3.42	178.18	2,2,2,2	1
5	UNX	B	14	1/1	0.34	3.06	95.10	2,2,2,2	1
5	UNX	B	21	1/1	-0.17	3.43	83.22	2,2,2,2	1
5	UNX	A	8	1/1	0.27	2.09	82.67	2,2,2,2	1
5	UNX	A	17	1/1	0.35	1.96	65.92	2,2,2,2	1
5	UNX	B	18	1/1	0.30	2.00	50.19	2,2,2,2	1
5	UNX	B	10	1/1	0.17	2.51	40.39	2,2,2,2	1
5	UNX	A	6	1/1	-0.42	1.65	23.59	2,2,2,2	1
5	UNX	A	16	1/1	-0.54	1.48	19.81	2,2,2,2	1
5	UNX	B	12	1/1	0.41	0.62	10.04	2,2,2,2	1
5	UNX	B	20	1/1	-0.11	1.02	8.77	2,2,2,2	1
2	BCD	A	603	77/77	0.70	0.24	1.25	97,99,102,103	0
4	D2V	A	602	29/29	0.94	0.20	1.13	34,37,43,45	0
4	D2V	B	602	29/29	0.95	0.20	0.80	35,37,46,47	0
2	BCD	B	603	77/77	0.79	0.23	0.76	66,75,80,81	0
3	HEM	B	601[B]	43/43	0.98	0.21	0.45	32,34,37,38	43
3	HEM	B	601[A]	43/43	0.98	0.21	0.41	32,34,36,36	43
3	HEM	A	601[A]	43/43	0.98	0.14	-0.22	25,27,28,29	43
3	HEM	A	601[B]	43/43	0.98	0.14	-0.23	29,31,33,35	43
5	UNX	A	7	1/1	0.56	2.51	-	2,2,2,2	1
5	UNX	B	15	1/1	-0.10	2.99	-	2,2,2,2	1
5	UNX	A	3	1/1	0.62	1.67	-	2,2,2,2	1
5	UNX	B	13	1/1	-0.43	1.72	-	2,2,2,2	1
5	UNX	A	19	1/1	0.51	2.30	-	2,2,2,2	1
5	UNX	A	1	1/1	-0.06	1.47	-	2,2,2,2	1
5	UNX	A	5	1/1	-0.69	3.09	-	2,2,2,2	1
5	UNX	B	2	1/1	-0.61	1.92	-	2,2,2,2	1
5	UNX	A	4	1/1	-0.71	1.16	-	2,2,2,2	1
5	UNX	B	11	1/1	-0.03	1.75	-	2,2,2,2	1

6.5 Other polymers ⓘ

There are no such residues in this entry.