



Full wwPDB X-ray Structure Validation Report ⓘ

Feb 1, 2016 – 03:39 PM GMT

PDB ID : 4D1B
Title : STRUCTURE OF MHP1, A NUCLEOBASE-CATION-SYMPORT-1 FAMILY TRANSPORTER, IN A CLOSED CONFORMATION WITH BENZYL-HYDANTOIN
Authors : Brueckner, F.; Geng, T.; Weyand, S.; Drew, D.; Iwata, S.; Henderson, P.J.F.; Cameron, A.D.
Deposited on : 2014-05-01
Resolution : 3.80 Å(reported)

This is a Full wwPDB X-ray Structure Validation Report for a publicly released PDB entry.
We welcome your comments at validation@mail.wwpdb.org
A user guide is available at
<http://wwpdb.org/validation/2016/XrayValidationReportHelp>
with specific help available everywhere you see the ⓘ symbol.

The following versions of software and data (see [references ⓘ](#)) were used in the production of this report:

MolProbity : 4.02b-467
Mogul : 1.7 (RC4), CSD as536be (2015)
Xtriage (Phenix) : 1.9-1692
EDS : rb-20026688
Percentile statistics : 20151230.v01 (using entries in the PDB archive December 30th 2015)
Refmac : 5.8.0135
CCP4 : 6.5.0
Ideal geometry (proteins) : Engh & Huber (2001)
Ideal geometry (DNA, RNA) : Parkinson et al. (1996)
Validation Pipeline (wwPDB-VP) : trunk26865

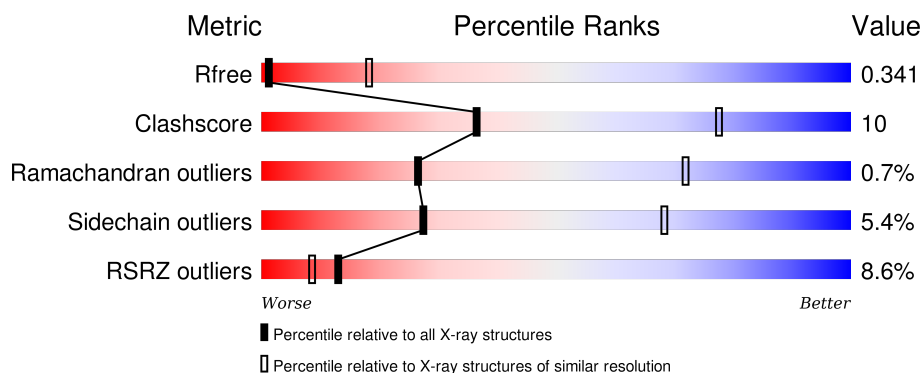
1 Overall quality at a glance

The following experimental techniques were used to determine the structure:

X-RAY DIFFRACTION

The reported resolution of this entry is 3.80 Å.

Percentile scores (ranging between 0-100) for global validation metrics of the entry are shown in the following graphic. The table shows the number of entries on which the scores are based.



Metric	Whole archive (#Entries)	Similar resolution (#Entries, resolution range(Å))
R_{free}	91344	1317 (4.10-3.50)
Clashscore	102246	1458 (4.10-3.50)
Ramachandran outliers	100387	1397 (4.10-3.50)
Sidechain outliers	100360	1392 (4.10-3.50)
RSRZ outliers	91569	1325 (4.10-3.50)

The table below summarises the geometric issues observed across the polymeric chains and their fit to the electron density. The red, orange, yellow and green segments on the lower bar indicate the fraction of residues that contain outliers for ≥ 3 , 2, 1 and 0 types of geometric quality criteria. A grey segment represents the fraction of residues that are not modelled. The numeric value for each fraction is indicated below the corresponding segment, with a dot representing fractions $\leq 5\%$. The upper red bar (where present) indicates the fraction of residues that have poor fit to the electron density. The numeric value is given above the bar.

Mol	Chain	Length	Quality of chain
1	A	495	

The following table lists non-polymeric compounds, carbohydrate monomers and non-standard residues in protein, DNA, RNA chains that are outliers for geometric or electron-density-fit criteria:

Mol	Type	Chain	Res	Chirality	Geometry	Clashes	Electron density
2	5FH	A	1467	-	-	-	X

2 Entry composition [i](#)

There are 3 unique types of molecules in this entry. The entry contains 3528 atoms, of which 0 are hydrogens and 0 are deuteriums.

In the tables below, the ZeroOcc column contains the number of atoms modelled with zero occupancy, the AltConf column contains the number of residues with at least one atom in alternate conformation and the Trace column contains the number of residues modelled with at most 2 atoms.

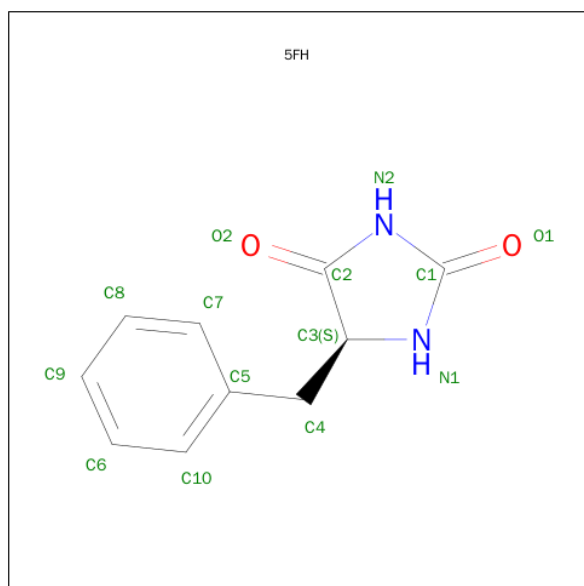
- Molecule 1 is a protein called HYDANTOIN TRANSPORT PROTEIN.

Mol	Chain	Residues	Atoms					ZeroOcc	AltConf	Trace
			Total	C	N	O	S			
1	A	456	3513	2336	563	592	22	0	0	0

There are 8 discrepancies between the modelled and reference sequences:

Chain	Residue	Modelled	Actual	Comment	Reference
A	488	GLY	-	EXPRESSION TAG	UNP D6R8X8
A	489	SER	-	EXPRESSION TAG	UNP D6R8X8
A	490	GLU	-	EXPRESSION TAG	UNP D6R8X8
A	491	ASN	-	EXPRESSION TAG	UNP D6R8X8
A	492	LEU	-	EXPRESSION TAG	UNP D6R8X8
A	493	TYR	-	EXPRESSION TAG	UNP D6R8X8
A	494	PHE	-	EXPRESSION TAG	UNP D6R8X8
A	495	GLN	-	EXPRESSION TAG	UNP D6R8X8

- Molecule 2 is (5S)-5-BENZYLIMIDAZOLIDINE-2,4-DIONE (three-letter code: 5FH) (formula: C₁₀H₁₀N₂O₂).



Mol	Chain	Residues	Atoms				ZeroOcc	AltConf
2	A	1	Total	C	N	O	0	0
			14	10	2	2		

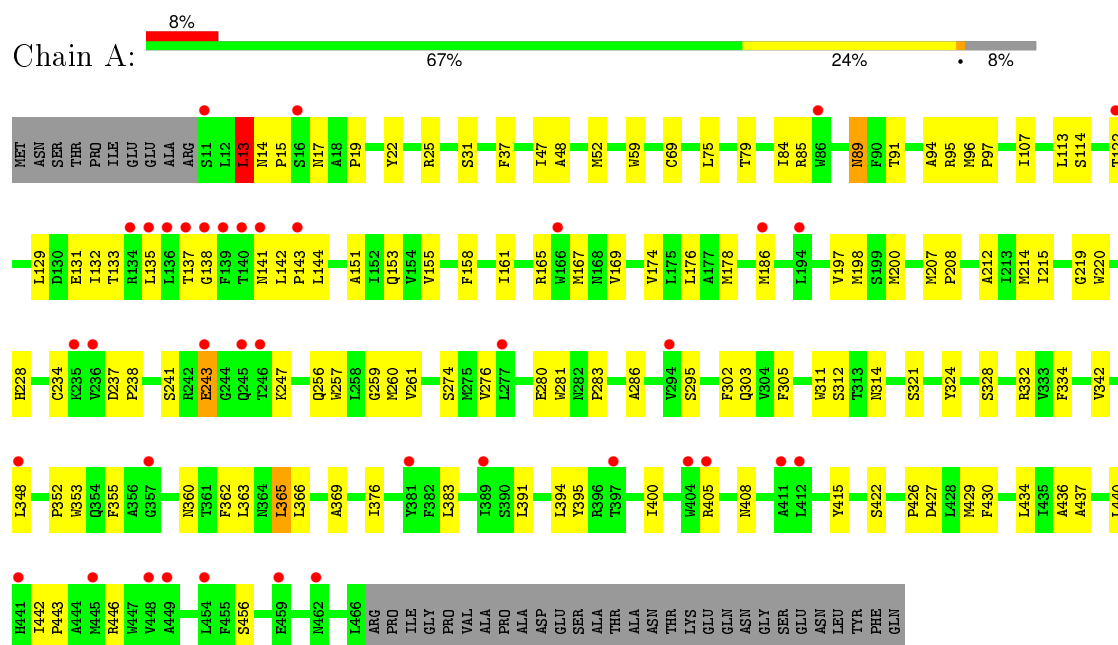
- Molecule 3 is SODIUM ION (three-letter code: NA) (formula: Na).

Mol	Chain	Residues	Atoms		ZeroOcc	AltConf
3	A	1	Total	Na	0	0
			1	1		

3 Residue-property plots [i](#)

These plots are drawn for all protein, RNA and DNA chains in the entry. The first graphic for a chain summarises the proportions of errors displayed in the second graphic. The second graphic shows the sequence view annotated by issues in geometry and electron density. Residues are color-coded according to the number of geometric quality criteria for which they contain at least one outlier: green = 0, yellow = 1, orange = 2 and red = 3 or more. A red dot above a residue indicates a poor fit to the electron density ($RSRZ > 2$). Stretches of 2 or more consecutive residues without any outlier are shown as a green connector. Residues present in the sample, but not in the model, are shown in grey.

• Molecule 1: HYDANTOIN TRANSPORT PROTEIN



4 Data and refinement statistics

Property	Value	Source
Space group	P 21 21 21	Depositor
Cell constants a, b, c, α , β , γ	95.61Å 106.74Å 107.85Å 90.00° 90.00° 90.00°	Depositor
Resolution (Å)	43.71 – 3.80 47.83 – 3.60	Depositor EDS
% Data completeness (in resolution range)	92.3 (43.71-3.80) 93.5 (47.83-3.60)	Depositor EDS
R_{merge}	0.10	Depositor
R_{sym}	(Not available)	Depositor
$\langle I/\sigma(I) \rangle$ ¹	2.27 (at 3.57Å)	Xtriage
Refinement program	PHENIX (PHENIX.REFINE)	Depositor
R, R_{free}	0.283 , 0.308 0.323 , 0.341	Depositor DCC
R_{free} test set	1129 reflections (11.46%)	DCC
Wilson B-factor (Å ²)	130.8	Xtriage
Anisotropy	0.681	Xtriage
Bulk solvent k_{sol} (e/Å ³), B_{sol} (Å ²)	0.25 , 136.6	EDS
Estimated twinning fraction	0.043 for -h,l,k	Xtriage
L-test for twinning ²	$\langle L \rangle = 0.37$, $\langle L^2 \rangle = 0.20$	Xtriage
Outliers	3 of 12425 reflections (0.024%)	Xtriage
F_o, F_c correlation	0.88	EDS
Total number of atoms	3528	wwPDB-VP
Average B, all atoms (Å ²)	218.0	wwPDB-VP

Xtriage's analysis on translational NCS is as follows: *The largest off-origin peak in the Patterson function is 6.83% of the height of the origin peak. No significant pseudotranslation is detected.*

¹Intensities estimated from amplitudes.

²Theoretical values of $\langle |L| \rangle$, $\langle L^2 \rangle$ for acentric reflections are 0.5, 0.375 respectively for untwinned datasets, and 0.333, 0.2 for perfectly twinned datasets.

5 Model quality [i](#)

5.1 Standard geometry [i](#)

Bond lengths and bond angles in the following residue types are not validated in this section: 5FH, NA

The Z score for a bond length (or angle) is the number of standard deviations the observed value is removed from the expected value. A bond length (or angle) with $|Z| > 5$ is considered an outlier worth inspection. RMSZ is the root-mean-square of all Z scores of the bond lengths (or angles).

Mol	Chain	Bond lengths		Bond angles	
		RMSZ	$\# Z > 5$	RMSZ	$\# Z > 5$
1	A	0.26	0/3610	0.53	1/4936 (0.0%)

There are no bond length outliers.

All (1) bond angle outliers are listed below:

Mol	Chain	Res	Type	Atoms	Z	Observed($^{\circ}$)	Ideal($^{\circ}$)
1	A	13	LEU	CA-CB-CG	5.29	127.47	115.30

There are no chirality outliers.

There are no planarity outliers.

5.2 Too-close contacts [i](#)

In the following table, the Non-H and H(model) columns list the number of non-hydrogen atoms and hydrogen atoms in the chain respectively. The H(added) column lists the number of hydrogen atoms added and optimized by MolProbity. The Clashes column lists the number of clashes within the asymmetric unit, whereas Symm-Clashes lists symmetry related clashes.

Mol	Chain	Non-H	H(model)	H(added)	Clashes	Symm-Clashes
1	A	3513	0	3604	68	0
2	A	14	0	10	1	0
3	A	1	0	0	0	0
All	All	3528	0	3614	68	0

The all-atom clashscore is defined as the number of clashes found per 1000 atoms (including hydrogen atoms). The all-atom clashscore for this structure is 10.

All (68) close contacts within the same asymmetric unit are listed below, sorted by their clash magnitude.

Atom-1	Atom-2	Interatomic distance (Å)	Clash overlap (Å)
1:A:283:PRO:HG2	1:A:302:PHE:HZ	1.43	0.83
1:A:59:TRP:HB3	1:A:198:MET:HG3	1.62	0.82
1:A:219:GLY:HA2	1:A:363:LEU:HD22	1.72	0.69
1:A:283:PRO:HG2	1:A:302:PHE:CZ	2.28	0.68
1:A:75:LEU:HD11	1:A:430:PHE:HZ	1.63	0.63
1:A:153:GLN:OE1	1:A:314:ASN:ND2	2.30	0.63
1:A:37:PHE:HZ	1:A:176:LEU:HD13	1.65	0.62
1:A:436:ALA:O	1:A:440:LEU:HG	1.98	0.62
1:A:75:LEU:HD21	1:A:434:LEU:HD11	1.83	0.61
1:A:369:ALA:O	1:A:415:TYR:OH	2.19	0.60
1:A:426:PRO:HA	1:A:429:MET:HG3	1.84	0.60
1:A:13:LEU:HD12	1:A:14:ASN:N	2.20	0.57
1:A:25:ARG:NH1	1:A:84:ILE:O	2.35	0.57
1:A:442:ILE:HB	1:A:443:PRO:HD3	1.87	0.55
1:A:302:PHE:O	1:A:305:PHE:HB3	2.07	0.55
1:A:243:GLU:O	1:A:247:LYS:HG2	2.08	0.54
1:A:131:GLU:HB3	1:A:303:GLN:HG2	1.90	0.54
1:A:96:MET:HB2	1:A:97:PRO:HD3	1.89	0.54
1:A:197:VAL:HA	1:A:200:MET:HG3	1.90	0.54
1:A:25:ARG:HD2	1:A:234:CYS:O	2.08	0.53
1:A:95:ARG:NH2	1:A:328:SER:O	2.42	0.52
1:A:174:VAL:O	1:A:178:MET:HG3	2.10	0.51
1:A:256:GLN:O	1:A:260:MET:HG2	2.12	0.50
1:A:48:ALA:O	1:A:52:MET:HG2	2.12	0.49
1:A:215:ILE:HG21	1:A:360:ASN:HD22	1.77	0.49
1:A:376:ILE:HG13	1:A:437:ALA:HB1	1.94	0.49
1:A:324:TYR:O	1:A:328:SER:HB3	2.12	0.49
1:A:400:ILE:HG21	1:A:456:SER:HB2	1.94	0.49
1:A:274:SER:HB3	1:A:280:GLU:O	2.13	0.48
1:A:91:THR:HG23	1:A:107:ILE:HD13	1.95	0.48
1:A:352:PRO:HD2	1:A:353:TRP:CZ3	2.48	0.48
1:A:69:CYS:HB3	1:A:261:VAL:HG22	1.95	0.48
1:A:165:ARG:O	1:A:169:VAL:HG23	2.13	0.47
1:A:257:TRP:CE2	1:A:261:VAL:HG21	2.50	0.47
1:A:220:TRP:CD2	2:A:1467:5FH:H7	2.50	0.47
1:A:47:ILE:HG12	1:A:281:TRP:CE2	2.51	0.46
1:A:208:PRO:HG2	1:A:427:ASP:OD2	2.16	0.45
1:A:142:LEU:HB3	1:A:143:PRO:HD3	1.97	0.45
1:A:75:LEU:O	1:A:79:THR:HG23	2.16	0.45
1:A:363:LEU:HD23	1:A:366:LEU:HD12	1.99	0.44
1:A:52:MET:HE1	1:A:212:ALA:HB1	1.99	0.44
1:A:89:ASN:HA	1:A:89:ASN:HD22	1.58	0.44

Continued on next page...

Continued from previous page...

Atom-1	Atom-2	Interatomic distance (Å)	Clash overlap (Å)
1:A:362:PHE:O	1:A:365:LEU:HB2	2.17	0.43
1:A:422:SER:O	1:A:429:MET:HG2	2.19	0.43
1:A:94:ALA:O	1:A:97:PRO:HD2	2.18	0.43
1:A:37:PHE:HA	1:A:259:GLY:O	2.17	0.43
1:A:22:TYR:CZ	1:A:238:PRO:HB3	2.54	0.43
1:A:19:PRO:HD3	1:A:395:TYR:CZ	2.54	0.42
1:A:186:MET:HE3	1:A:286:ALA:HB1	2.02	0.42
1:A:141:ASN:OD1	1:A:143:PRO:HD2	2.20	0.42
1:A:97:PRO:O	1:A:408:ASN:ND2	2.53	0.42
1:A:214:MET:CE	1:A:430:PHE:HB3	2.50	0.42
1:A:17:ASN:HD22	1:A:328:SER:HA	1.83	0.42
1:A:122:THR:HG21	1:A:348:LEU:HD21	2.02	0.41
1:A:151:ALA:O	1:A:155:VAL:HG23	2.20	0.41
1:A:131:GLU:O	1:A:135:LEU:HG	2.20	0.41
1:A:334:PHE:HE1	1:A:342:VAL:HG21	1.85	0.41
1:A:129:LEU:O	1:A:133:THR:HG23	2.21	0.41
1:A:178:MET:HE2	1:A:305:PHE:HB2	2.02	0.41
1:A:14:ASN:HB2	1:A:15:PRO:HD2	2.01	0.41
1:A:237:ASP:HA	1:A:238:PRO:HD2	1.91	0.41
1:A:155:VAL:HA	1:A:158:PHE:CD2	2.56	0.41
1:A:113:LEU:HD13	1:A:366:LEU:HD22	2.01	0.41
1:A:383:LEU:HD13	1:A:442:ILE:HD11	2.03	0.41
1:A:132:ILE:CG1	1:A:303:GLN:HB3	2.51	0.41
1:A:207:MET:HA	1:A:208:PRO:HD3	1.93	0.40
1:A:302:PHE:CD1	1:A:302:PHE:C	2.95	0.40
1:A:391:LEU:HA	1:A:394:LEU:HD12	2.02	0.40

There are no symmetry-related clashes.

5.3 Torsion angles [i](#)

5.3.1 Protein backbone [i](#)

In the following table, the Percentiles column shows the percent Ramachandran outliers of the chain as a percentile score with respect to all X-ray entries followed by that with respect to entries of similar resolution.

The Analysed column shows the number of residues for which the backbone conformation was analysed, and the total number of residues.

Mol	Chain	Analysed	Favoured	Allowed	Outliers	Percentiles
1	A	454/495 (92%)	406 (89%)	45 (10%)	3 (1%)	26 72

All (3) Ramachandran outliers are listed below:

Mol	Chain	Res	Type
1	A	228	HIS
1	A	137	THR
1	A	138	GLY

5.3.2 Protein sidechains ⓘ

In the following table, the Percentiles column shows the percent sidechain outliers of the chain as a percentile score with respect to all X-ray entries followed by that with respect to entries of similar resolution.

The Analysed column shows the number of residues for which the sidechain conformation was analysed, and the total number of residues.

Mol	Chain	Analysed	Rotameric	Outliers	Percentiles
1	A	367/399 (92%)	347 (95%)	20 (5%)	27 68

All (20) residues with a non-rotameric sidechain are listed below:

Mol	Chain	Res	Type
1	A	13	LEU
1	A	31	SER
1	A	85	ARG
1	A	89	ASN
1	A	114	SER
1	A	144	LEU
1	A	161	ILE
1	A	167	MET
1	A	241	SER
1	A	243	GLU
1	A	276	VAL
1	A	295	SER
1	A	311	TRP
1	A	312	SER
1	A	321	SER
1	A	332	ARG
1	A	355	PHE
1	A	365	LEU

Continued on next page...

Continued from previous page...

Mol	Chain	Res	Type
1	A	405	ARG
1	A	446	ARG

Some sidechains can be flipped to improve hydrogen bonding and reduce clashes. All (2) such sidechains are listed below:

Mol	Chain	Res	Type
1	A	89	ASN
1	A	360	ASN

5.3.3 RNA [i](#)

There are no RNA molecules in this entry.

5.4 Non-standard residues in protein, DNA, RNA chains [i](#)

There are no non-standard protein/DNA/RNA residues in this entry.

5.5 Carbohydrates [i](#)

There are no carbohydrates in this entry.

5.6 Ligand geometry [i](#)

Of 2 ligands modelled in this entry, 1 is monoatomic - leaving 1 for Mogul analysis.

In the following table, the Counts columns list the number of bonds (or angles) for which Mogul statistics could be retrieved, the number of bonds (or angles) that are observed in the model and the number of bonds (or angles) that are defined in the chemical component dictionary. The Link column lists molecule types, if any, to which the group is linked. The Z score for a bond length (or angle) is the number of standard deviations the observed value is removed from the expected value. A bond length (or angle) with $|Z| > 2$ is considered an outlier worth inspection. RMSZ is the root-mean-square of all Z scores of the bond lengths (or angles).

Mol	Type	Chain	Res	Link	Bond lengths			Bond angles		
					Counts	RMSZ	$\# Z > 2$	Counts	RMSZ	$\# Z > 2$
2	5FH	A	1467	-	15,15,15	3.73	7 (46%)	14,20,20	1.62	1 (7%)

In the following table, the Chirals column lists the number of chiral outliers, the number of chiral centers analysed, the number of these observed in the model and the number defined in the chemical

component dictionary. Similar counts are reported in the Torsion and Rings columns. '-' means no outliers of that kind were identified.

Mol	Type	Chain	Res	Link	Chirals	Torsions	Rings
2	5FH	A	1467	-	-	0/4/16/16	0/2/2/2

All (7) bond length outliers are listed below:

Mol	Chain	Res	Type	Atoms	Z	Observed(Å)	Ideal(Å)
2	A	1467	5FH	C3-C2	-6.98	1.47	1.52
2	A	1467	5FH	C1-N2	3.16	1.45	1.39
2	A	1467	5FH	C2-N2	4.13	1.42	1.37
2	A	1467	5FH	C9-C8	4.51	1.49	1.38
2	A	1467	5FH	C7-C5	4.97	1.49	1.38
2	A	1467	5FH	C6-C10	5.16	1.49	1.38
2	A	1467	5FH	C1-N1	7.32	1.45	1.35

All (1) bond angle outliers are listed below:

Mol	Chain	Res	Type	Atoms	Z	Observed(°)	Ideal(°)
2	A	1467	5FH	C2-C3-N1	5.62	107.51	100.92

There are no chirality outliers.

There are no torsion outliers.

There are no ring outliers.

1 monomer is involved in 1 short contact:

Mol	Chain	Res	Type	Clashes	Symm-Clashes
2	A	1467	5FH	1	0

5.7 Other polymers [i](#)

There are no such residues in this entry.

5.8 Polymer linkage issues [i](#)

There are no chain breaks in this entry.

6 Fit of model and data

6.1 Protein, DNA and RNA chains

In the following table, the column labelled ‘#RSRZ> 2’ contains the number (and percentage) of RSRZ outliers, followed by percent RSRZ outliers for the chain as percentile scores relative to all X-ray entries and entries of similar resolution. The OWAB column contains the minimum, median, 95th percentile and maximum values of the occupancy-weighted average B-factor per residue. The column labelled ‘Q< 0.9’ lists the number of (and percentage) of residues with an average occupancy less than 0.9.

Mol	Chain	Analysed	<RSRZ>	#RSRZ>2	OWAB(Å ²)	Q<0.9
1	A	456/495 (92%)	0.42	39 (8%) 13 8	108, 205, 333, 493	0

All (39) RSRZ outliers are listed below:

Mol	Chain	Res	Type	RSRZ
1	A	236	VAL	7.1
1	A	404	TRP	6.8
1	A	135	LEU	6.4
1	A	405	ARG	5.7
1	A	411	ALA	5.4
1	A	449	ALA	5.2
1	A	448	VAL	3.9
1	A	454	LEU	3.8
1	A	122	THR	3.8
1	A	136	LEU	3.7
1	A	389	ILE	3.5
1	A	140	THR	3.5
1	A	134	ARG	3.2
1	A	141	ASN	3.2
1	A	243	GLU	3.1
1	A	245	GLN	2.9
1	A	445	MET	2.9
1	A	459	GLU	2.7
1	A	139	PHE	2.6
1	A	138	GLY	2.6
1	A	86	TRP	2.6
1	A	294	VAL	2.6
1	A	166	TRP	2.5
1	A	194	LEU	2.5
1	A	397	THR	2.5
1	A	16	SER	2.5
1	A	441	HIS	2.5

Continued on next page...

Continued from previous page...

Mol	Chain	Res	Type	RSRZ
1	A	137	THR	2.4
1	A	348	LEU	2.4
1	A	462	ASN	2.4
1	A	186	MET	2.4
1	A	357	GLY	2.3
1	A	381	TYR	2.3
1	A	277	LEU	2.2
1	A	143	PRO	2.2
1	A	246	THR	2.1
1	A	235	LYS	2.1
1	A	11	SER	2.0
1	A	412	LEU	2.0

6.2 Non-standard residues in protein, DNA, RNA chains [i](#)

There are no non-standard protein/DNA/RNA residues in this entry.

6.3 Carbohydrates [i](#)

There are no carbohydrates in this entry.

6.4 Ligands [i](#)

In the following table, the Atoms column lists the number of modelled atoms in the group and the number defined in the chemical component dictionary. LLDF column lists the quality of electron density of the group with respect to its neighbouring residues in protein, DNA or RNA chains. The B-factors column lists the minimum, median, 95th percentile and maximum values of B factors of atoms in the group. The column labelled 'Q< 0.9' lists the number of atoms with occupancy less than 0.9.

Mol	Type	Chain	Res	Atoms	RSCC	RSR	LLDF	B-factors(\AA^2)	Q<0.9
2	5FH	A	1467	14/14	0.91	0.46	1.67	188,190,194,195	0
3	NA	A	1471	1/1	0.90	0.13	-1.33	119,119,119,119	0

6.5 Other polymers [i](#)

There are no such residues in this entry.