



Full wwPDB X-ray Structure Validation Report ⓘ

Feb 1, 2016 – 03:40 PM GMT

PDB ID : 4D1P
Title : Structure of human endothelial nitric oxide synthase heme domain IN COMPLEX WITH 6-((((3S, 5R)-5-(((6-AMINO-4-METHYLPYRIDIN-2-YL)METHOXY) METHYL)PYRROLIDIN-3-YL)OXY) METHYL)-4-METHYLPYRIDIN-2-AMINE
Authors : Li, H.; Poulos, T.L.
Deposited on : 2014-05-02
Resolution : 1.73 Å(reported)

This is a Full wwPDB X-ray Structure Validation Report for a publicly released PDB entry.
We welcome your comments at validation@mail.wwpdb.org
A user guide is available at
<http://wwpdb.org/validation/2016/XrayValidationReportHelp>
with specific help available everywhere you see the ⓘ symbol.

The following versions of software and data (see [references ⓘ](#)) were used in the production of this report:

MolProbity : 4.02b-467
Mogul : 1.7 (RC4), CSD as536be (2015)
Xtriage (Phenix) : 1.9-1692
EDS : rb-20026688
Percentile statistics : 20151230.v01 (using entries in the PDB archive December 30th 2015)
Refmac : 5.8.0135
CCP4 : 6.5.0
Ideal geometry (proteins) : Engh & Huber (2001)
Ideal geometry (DNA, RNA) : Parkinson et al. (1996)
Validation Pipeline (wwPDB-VP) : trunk26865

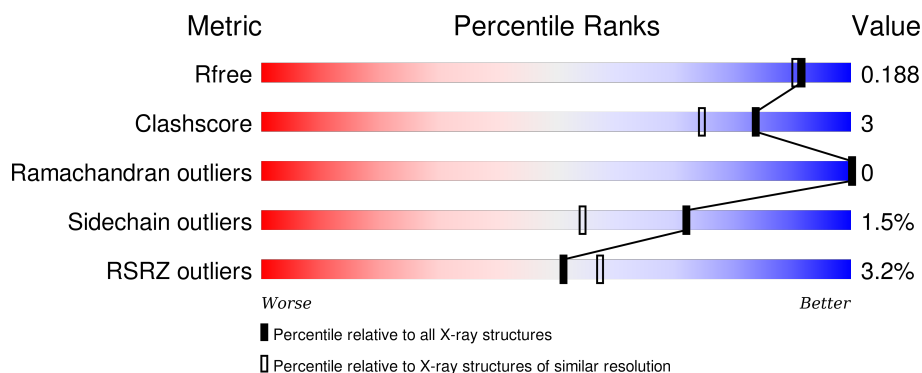
1 Overall quality at a glance

The following experimental techniques were used to determine the structure:

X-RAY DIFFRACTION


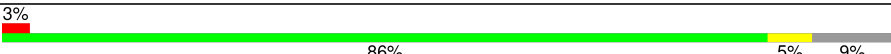
The reported resolution of this entry is 1.73 Å.

Percentile scores (ranging between 0-100) for global validation metrics of the entry are shown in the following graphic. The table shows the number of entries on which the scores are based.



Metric	Whole archive (#Entries)	Similar resolution (#Entries, resolution range(Å))
R_{free}	91344	2417 (1.76-1.72)
Clashscore	102246	2570 (1.76-1.72)
Ramachandran outliers	100387	2544 (1.76-1.72)
Sidechain outliers	100360	2544 (1.76-1.72)
RSRZ outliers	91569	2420 (1.76-1.72)

The table below summarises the geometric issues observed across the polymeric chains and their fit to the electron density. The red, orange, yellow and green segments on the lower bar indicate the fraction of residues that contain outliers for ≥ 3 , 2, 1 and 0 types of geometric quality criteria. A grey segment represents the fraction of residues that are not modelled. The numeric value for each fraction is indicated below the corresponding segment, with a dot representing fractions $\leq 5\%$. The upper red bar (where present) indicates the fraction of residues that have poor fit to the electron density. The numeric value is given above the bar.

Mol	Chain	Length	Quality of chain
1	A	440	
1	B	440	

The following table lists non-polymeric compounds, carbohydrate monomers and non-standard residues in protein, DNA, RNA chains that are outliers for geometric or electron-density-fit criteria:

Mol	Type	Chain	Res	Chirality	Geometry	Clashes	Electron density
2	ACT	A	860	-	-	-	X
2	ACT	A	861	-	-	-	X
5	Q16	A	800	-	-	-	X
5	Q16	B	800	-	-	-	X
6	BTB	A	870	-	-	-	X

2 Entry composition [i](#)

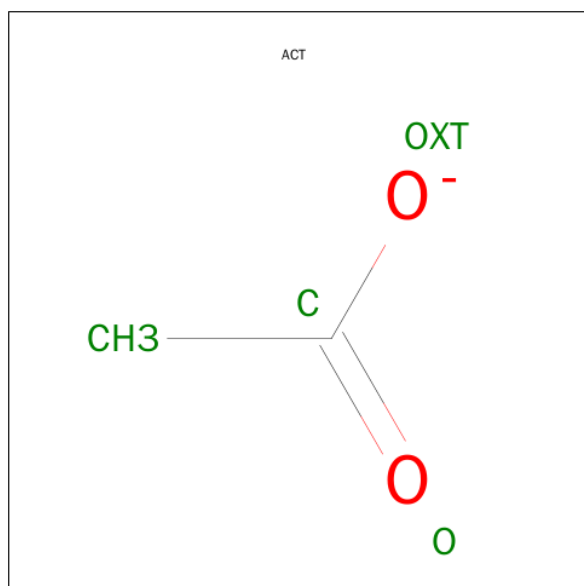
There are 10 unique types of molecules in this entry. The entry contains 7449 atoms, of which 0 are hydrogens and 0 are deuteriums.

In the tables below, the ZeroOcc column contains the number of atoms modelled with zero occupancy, the AltConf column contains the number of residues with at least one atom in alternate conformation and the Trace column contains the number of residues modelled with at most 2 atoms.

- Molecule 1 is a protein called NITRIC OXIDE SYNTHASE, ENDOTHELIAL.

Mol	Chain	Residues	Atoms					ZeroOcc	AltConf	Trace
1	A	401	Total	C	N	O	S	0	3	0
			3212	2046	563	587	16			
1	B	402	Total	C	N	O	S	0	5	0
			3230	2057	566	590	17			

- Molecule 2 is ACETATE ION (three-letter code: ACT) (formula: C₂H₃O₂).



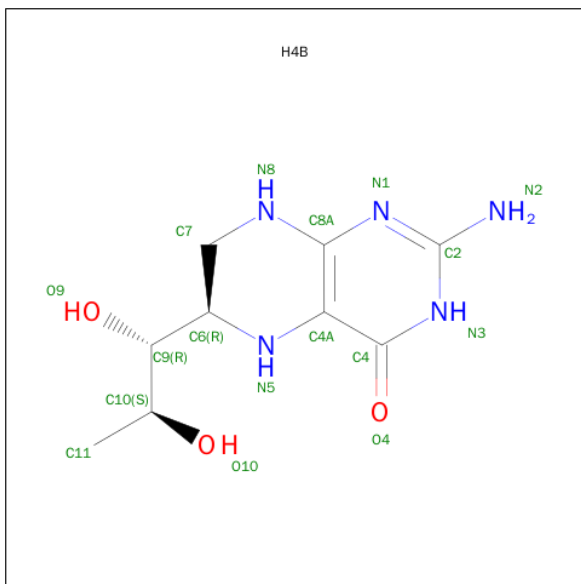
Mol	Chain	Residues	Atoms			ZeroOcc	AltConf
2	B	1	Total	C	O	0	0
			4	2	2		
2	A	1	Total	C	O	0	0
			4	2	2		
2	A	1	Total	C	O	0	0
			4	2	2		
2	B	1	Total	C	O	0	0
			4	2	2		

- Molecule 3 is PROTOPORPHYRIN IX CONTAINING FE (three-letter code: HEM) (formula: $C_{34}H_{32}FeN_4O_4$).



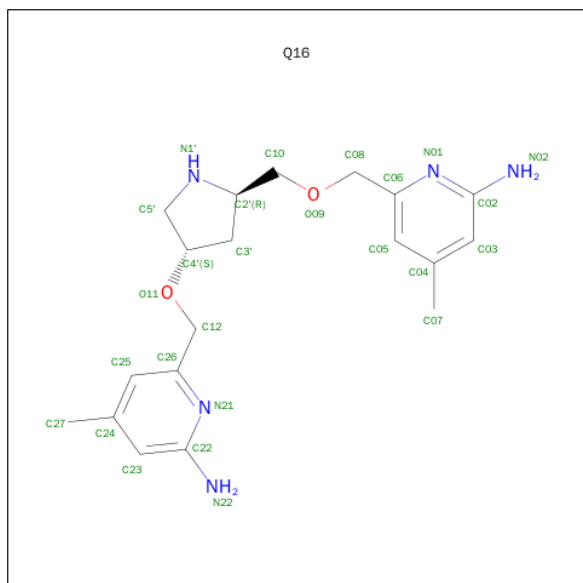
Mol	Chain	Residues	Atoms					ZeroOcc	AltConf
3	A	1	Total	C	Fe	N	O	0	0
			43	34	1	4	4		
3	B	1	Total	C	Fe	N	O	0	0
			43	34	1	4	4		

- Molecule 4 is 5,6,7,8-TETRAHYDROBIOPTERIN (three-letter code: H4B) (formula: $C_9H_{15}N_5O_3$).



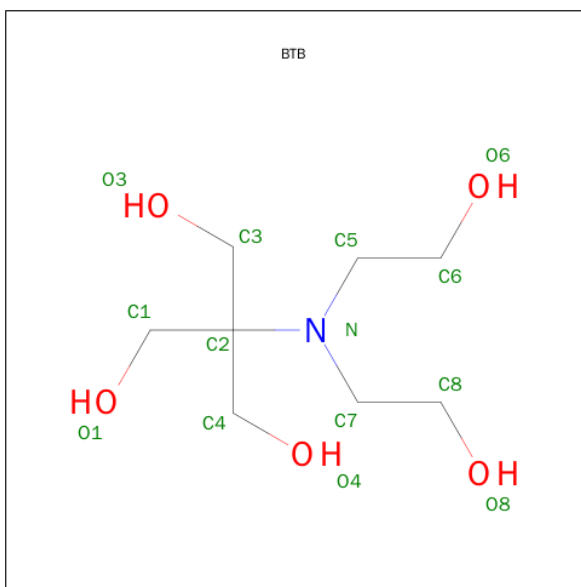
Mol	Chain	Residues	Atoms				ZeroOcc	AltConf
4	A	1	Total	C	N	O	0	0
			17	9	5	3		
4	B	1	Total	C	N	O	0	0
			17	9	5	3		

- Molecule 5 is 6-((((3S, 5R)-5-(((6-AMINO-4-METHYLPYRIDIN-2-YL)METHOXY)METHYL)PYRROLIDIN-3-YL)OXY)METHYL)-4-METHYLPYRIDIN-2-AMINE (three-letter code: Q16) (formula: C₁₉H₂₇N₅O₂).



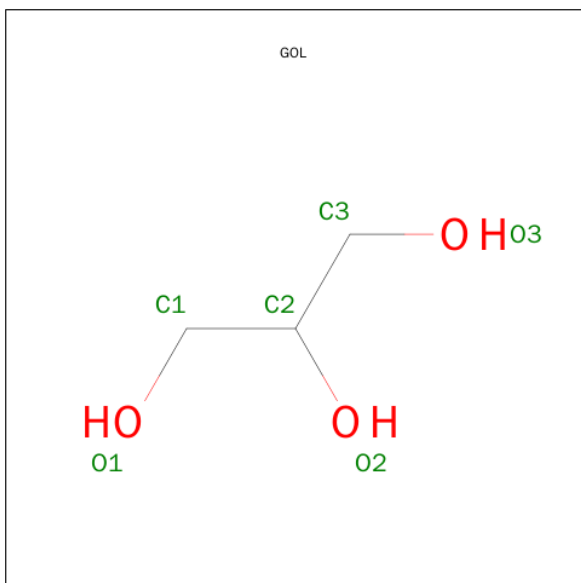
Mol	Chain	Residues	Atoms				ZeroOcc	AltConf
5	A	1	Total	C	N	O	0	0
			26	19	5	2		
5	B	1	Total	C	N	O	0	0
			26	19	5	2		

- Molecule 6 is 2-[BIS-(2-HYDROXY-ETHYL)-AMINO]-2-HYDROXYMETHYL-PROPAN E-1,3-DIOL (three-letter code: BTB) (formula: C₈H₁₉N₅O₅).



Mol	Chain	Residues	Atoms				ZeroOcc	AltConf
6	A	1	Total	C	N	O	0	0
			14	8	1	5		
6	A	1	Total	C	N	O	0	0
			14	8	1	5		
6	B	1	Total	C	N	O	0	0
			14	8	1	5		
6	B	1	Total	C	N	O	0	0
			14	8	1	5		

- Molecule 7 is GLYCEROL (three-letter code: GOL) (formula: $C_3H_8O_3$).



Mol	Chain	Residues	Atoms	ZeroOcc	AltConf
7	A	1	Total C O 6 3 3	0	0

- Molecule 8 is ZINC ION (three-letter code: ZN) (formula: Zn).

Mol	Chain	Residues	Atoms	ZeroOcc	AltConf
8	A	1	Total Zn 1 1	0	0

- Molecule 9 is GADOLINIUM ATOM (three-letter code: GD) (formula: Gd).

Mol	Chain	Residues	Atoms	ZeroOcc	AltConf
9	B	1	Total Gd 1 1	0	0
9	A	1	Total Gd 1 1	0	0

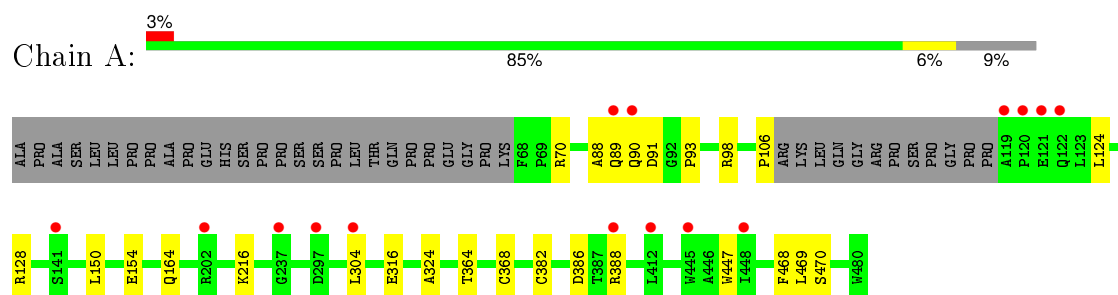
- Molecule 10 is water.

Mol	Chain	Residues	Atoms	ZeroOcc	AltConf
10	A	381	Total O 381 381	0	0
10	B	373	Total O 373 373	0	0

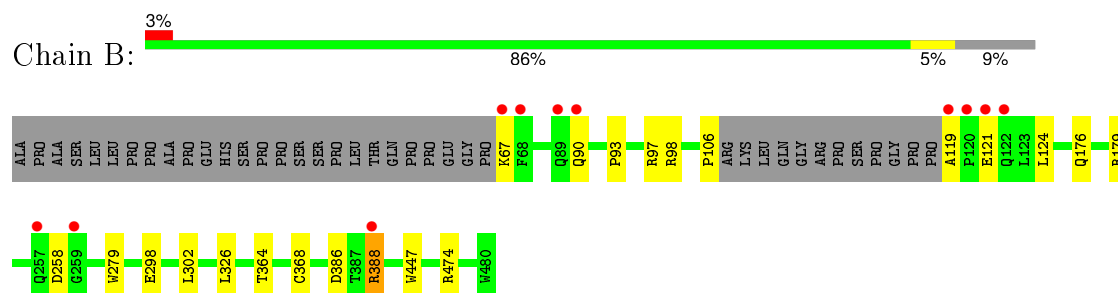
3 Residue-property plots [i](#)

These plots are drawn for all protein, RNA and DNA chains in the entry. The first graphic for a chain summarises the proportions of errors displayed in the second graphic. The second graphic shows the sequence view annotated by issues in geometry and electron density. Residues are color-coded according to the number of geometric quality criteria for which they contain at least one outlier: green = 0, yellow = 1, orange = 2 and red = 3 or more. A red dot above a residue indicates a poor fit to the electron density ($\text{RSRZ} > 2$). Stretches of 2 or more consecutive residues without any outlier are shown as a green connector. Residues present in the sample, but not in the model, are shown in grey.

• Molecule 1: NITRIC OXIDE SYNTHASE, ENDOTHELIAL



• Molecule 1: NITRIC OXIDE SYNTHASE, ENDOTHELIAL



4 Data and refinement statistics

Property	Value	Source
Space group	P 21 21 21	Depositor
Cell constants a, b, c, α , β , γ	62.23Å 110.38Å 153.67Å 90.00° 90.00° 90.00°	Depositor
Resolution (Å)	48.36 – 1.73 48.36 – 1.73	Depositor EDS
% Data completeness (in resolution range)	98.7 (48.36-1.73) 98.7 (48.36-1.73)	Depositor EDS
R_{merge}	0.07	Depositor
R_{sym}	(Not available)	Depositor
$\langle I/\sigma(I) \rangle$ ¹	1.45 (at 1.73Å)	Xtriage
Refinement program	PHENIX (PHENIX.REFINE)	Depositor
R, R_{free}	0.157 , 0.186 0.160 , 0.188	Depositor DCC
R_{free} test set	5494 reflections (5.28%)	DCC
Wilson B-factor (Å ²)	24.4	Xtriage
Anisotropy	0.486	Xtriage
Bulk solvent k_{sol} (e/Å ³), B_{sol} (Å ²)	0.35 , 51.5	EDS
Estimated twinning fraction	No twinning to report.	Xtriage
L-test for twinning ²	$\langle L \rangle = 0.48$, $\langle L^2 \rangle = 0.32$	Xtriage
Outliers	0 of 109503 reflections	Xtriage
F_o, F_c correlation	0.97	EDS
Total number of atoms	7449	wwPDB-VP
Average B, all atoms (Å ²)	30.0	wwPDB-VP

Xtriage's analysis on translational NCS is as follows: *The largest off-origin peak in the Patterson function is 3.71% of the height of the origin peak. No significant pseudotranslation is detected.*

¹Intensities estimated from amplitudes.

²Theoretical values of $\langle |L| \rangle$, $\langle L^2 \rangle$ for acentric reflections are 0.5, 0.375 respectively for untwinned datasets, and 0.333, 0.2 for perfectly twinned datasets.

5 Model quality

5.1 Standard geometry

Bond lengths and bond angles in the following residue types are not validated in this section: GOL, ZN, GD, H4B, ACT, Q16, BTB, HEM

The Z score for a bond length (or angle) is the number of standard deviations the observed value is removed from the expected value. A bond length (or angle) with $|Z| > 5$ is considered an outlier worth inspection. RMSZ is the root-mean-square of all Z scores of the bond lengths (or angles).

Mol	Chain	Bond lengths		Bond angles	
		RMSZ	# Z >5	RMSZ	# Z >5
1	A	0.34	0/3313	0.49	0/4515
1	B	0.35	0/3334	0.50	0/4543
All	All	0.35	0/6647	0.50	0/9058

There are no bond length outliers.

There are no bond angle outliers.

There are no chirality outliers.

There are no planarity outliers.

5.2 Too-close contacts

In the following table, the Non-H and H(model) columns list the number of non-hydrogen atoms and hydrogen atoms in the chain respectively. The H(added) column lists the number of hydrogen atoms added and optimized by MolProbity. The Clashes column lists the number of clashes within the asymmetric unit, whereas Symm-Clashes lists symmetry related clashes.

Mol	Chain	Non-H	H(model)	H(added)	Clashes	Symm-Clashes
1	A	3212	0	3114	16	0
1	B	3230	0	3137	11	0
2	A	8	0	6	0	0
2	B	8	0	6	0	0
3	A	43	0	30	1	0
3	B	43	0	30	2	0
4	A	17	0	15	1	0
4	B	17	0	15	1	0
5	A	26	0	27	1	0
5	B	26	0	27	2	0
6	A	28	0	35	6	0

Continued on next page...

Continued from previous page...

Mol	Chain	Non-H	H(model)	H(added)	Clashes	Symm-Clashes
6	B	28	0	34	3	0
7	A	6	0	8	1	0
8	A	1	0	0	0	0
9	A	1	0	0	0	0
9	B	1	0	0	0	0
10	A	381	0	0	5	0
10	B	373	0	0	2	0
All	All	7449	0	6484	39	0

The all-atom clashscore is defined as the number of clashes found per 1000 atoms (including hydrogen atoms). The all-atom clashscore for this structure is 3.

All (39) close contacts within the same asymmetric unit are listed below, sorted by their clash magnitude.

Atom-1	Atom-2	Interatomic distance (Å)	Clash overlap (Å)
6:A:870:BTB:H32	10:A:2299:HOH:O	1.76	0.84
1:A:128:ARG:NH2	1:A:154:GLU:OE2	2.19	0.74
1:A:70:ARG:NH1	10:A:2004:HOH:O	2.18	0.74
1:B:119:ALA:N	1:B:121:GLU:OE2	2.31	0.64
1:A:91:ASP:OD1	10:A:2023:HOH:O	2.16	0.59
3:A:500:HEM:HBB2	3:A:500:HEM:HHC	1.84	0.58
1:B:386:ASP:OD1	1:B:388:ARG:HD3	2.04	0.57
6:A:871:BTB:O4	6:A:871:BTB:H71	2.06	0.54
1:A:89:GLN:OE1	1:A:89:GLN:N	2.36	0.54
1:A:382:CYS:HA	6:A:870:BTB:H41	1.90	0.53
3:B:500:HEM:HHC	3:B:500:HEM:HBB2	1.91	0.51
1:A:150:LEU:O	1:A:154:GLU:HG3	2.12	0.50
1:B:474:ARG:NH2	10:B:2354:HOH:O	2.41	0.50
1:B:279:TRP:HB2	1:B:302:LEU:HD21	1.93	0.48
7:A:880:GOL:H2	10:A:2378:HOH:O	2.14	0.48
5:A:800:Q16:H5'1	5:A:800:Q16:H121	1.57	0.48
1:A:386:ASP:OD1	1:A:388:ARG:HG2	2.13	0.47
1:A:88:ALA:O	1:B:97:ARG:NH2	2.48	0.47
1:A:93:PRO:HB3	1:A:106:PRO:HB3	1.95	0.47
1:B:298:GLU:OE2	6:B:871:BTB:O1	2.22	0.46
1:B:364:THR:O	1:B:368:CYS:HB2	2.15	0.46
1:B:93:PRO:HB3	1:B:106:PRO:HB2	1.99	0.45
1:A:89:GLN:OE1	1:A:469:LEU:HA	2.16	0.45
1:A:89:GLN:NE2	1:A:470:SER:H	2.15	0.45
6:B:871:BTB:H32	6:B:871:BTB:H71	1.59	0.45
1:A:447:TRP:HA	4:A:600:H4B:N1	2.33	0.43

Continued on next page...

Continued from previous page...

Atom-1	Atom-2	Interatomic distance (Å)	Clash overlap (Å)
1:A:316[B]:GLU:HG2	1:A:324:ALA:HB2	2.00	0.43
1:B:447:TRP:HA	4:B:600:H4B:N1	2.34	0.43
1:B:176:GLN:HE22	1:B:179:ARG:HH11	1.66	0.43
6:A:871:BTB:H41	6:A:871:BTB:O8	2.19	0.43
3:B:500:HEM:O2A	5:B:800:Q16:N1'	2.47	0.42
6:B:870:BTB:H71	6:B:870:BTB:H32	1.82	0.42
1:A:124:LEU:HD23	1:A:124:LEU:HA	1.93	0.42
1:A:364:THR:O	1:A:368:CYS:HB2	2.20	0.42
1:B:124:LEU:HD23	1:B:124:LEU:HA	1.87	0.41
5:B:800:Q16:H3'2	10:B:2285:HOH:O	2.21	0.41
1:A:90:GLN:HB2	1:A:468:PHE:CD1	2.55	0.41
6:A:871:BTB:H42	10:A:2295:HOH:O	2.20	0.41
6:A:871:BTB:H61	6:A:871:BTB:H72	1.71	0.40

There are no symmetry-related clashes.

5.3 Torsion angles ⓘ

5.3.1 Protein backbone ⓘ

In the following table, the Percentiles column shows the percent Ramachandran outliers of the chain as a percentile score with respect to all X-ray entries followed by that with respect to entries of similar resolution.

The Analysed column shows the number of residues for which the backbone conformation was analysed, and the total number of residues.

Mol	Chain	Analysed	Favoured	Allowed	Outliers	Percentiles	
1	A	400/440 (91%)	395 (99%)	5 (1%)	0	100	100
1	B	403/440 (92%)	398 (99%)	5 (1%)	0	100	100
All	All	803/880 (91%)	793 (99%)	10 (1%)	0	100	100

There are no Ramachandran outliers to report.

5.3.2 Protein sidechains ⓘ

In the following table, the Percentiles column shows the percent sidechain outliers of the chain as a percentile score with respect to all X-ray entries followed by that with respect to entries of similar resolution.

The Analysed column shows the number of residues for which the sidechain conformation was analysed, and the total number of residues.

Mol	Chain	Analysed	Rotameric	Outliers	Percentiles	
1	A	343/373 (92%)	339 (99%)	4 (1%)	78	62
1	B	346/373 (93%)	340 (98%)	6 (2%)	68	48
All	All	689/746 (92%)	679 (98%)	10 (2%)	72	54

All (10) residues with a non-rotameric sidechain are listed below:

Mol	Chain	Res	Type
1	A	98	ARG
1	A	164	GLN
1	A	216	LYS
1	A	304	LEU
1	B	67	LYS
1	B	90	GLN
1	B	98	ARG
1	B	258	ASP
1	B	326	LEU
1	B	388	ARG

Some sidechains can be flipped to improve hydrogen bonding and reduce clashes. All (1) such sidechains are listed below:

Mol	Chain	Res	Type
1	A	133	GLN

5.3.3 RNA ⓘ

There are no RNA molecules in this entry.

5.4 Non-standard residues in protein, DNA, RNA chains ⓘ

There are no non-standard protein/DNA/RNA residues in this entry.

5.5 Carbohydrates ⓘ

There are no carbohydrates in this entry.

5.6 Ligand geometry

Of 18 ligands modelled in this entry, 3 are monoatomic - leaving 15 for Mogul analysis.

In the following table, the Counts columns list the number of bonds (or angles) for which Mogul statistics could be retrieved, the number of bonds (or angles) that are observed in the model and the number of bonds (or angles) that are defined in the chemical component dictionary. The Link column lists molecule types, if any, to which the group is linked. The Z score for a bond length (or angle) is the number of standard deviations the observed value is removed from the expected value. A bond length (or angle) with $|Z| > 2$ is considered an outlier worth inspection. RMSZ is the root-mean-square of all Z scores of the bond lengths (or angles).

Mol	Type	Chain	Res	Link	Bond lengths			Bond angles		
					Counts	RMSZ	# Z > 2	Counts	RMSZ	# Z > 2
3	HEM	A	500	1	30,50,50	2.09	10 (33%)	24,82,82	2.49	9 (37%)
4	H4B	A	600	-	13,18,18	0.77	0	11,26,26	2.47	5 (45%)
5	Q16	A	800	-	28,28,28	0.46	0	30,38,38	1.72	4 (13%)
2	ACT	A	860	-	1,3,3	1.25	0	0,3,3	0.00	-
2	ACT	A	861	-	1,3,3	1.36	0	0,3,3	0.00	-
6	BTB	A	870	9	12,13,13	0.59	0	8,16,16	1.08	0
6	BTB	A	871	-	12,13,13	0.51	0	8,16,16	0.81	0
7	GOL	A	880	-	5,5,5	0.38	0	5,5,5	0.52	0
3	HEM	B	500	1	30,50,50	2.16	11 (36%)	24,82,82	2.43	11 (45%)
4	H4B	B	600	-	13,18,18	0.79	0	11,26,26	2.44	5 (45%)
5	Q16	B	800	-	28,28,28	0.47	0	30,38,38	2.05	9 (30%)
2	ACT	B	860	-	1,3,3	0.97	0	0,3,3	0.00	-
2	ACT	B	861	-	1,3,3	1.19	0	0,3,3	0.00	-
6	BTB	B	870	9	12,13,13	0.48	0	8,16,16	0.55	0
6	BTB	B	871	-	12,13,13	0.49	0	8,16,16	1.16	1 (12%)

In the following table, the Chirals column lists the number of chiral outliers, the number of chiral centers analysed, the number of these observed in the model and the number defined in the chemical component dictionary. Similar counts are reported in the Torsion and Rings columns. '-' means no outliers of that kind were identified.

Mol	Type	Chain	Res	Link	Chirals	Torsions	Rings
3	HEM	A	500	1	-	0/10/54/54	0/0/8/8
4	H4B	A	600	-	-	0/8/17/17	0/2/2/2
5	Q16	A	800	-	-	0/11/20/20	0/3/3/3
2	ACT	A	860	-	-	0/0/0/0	0/0/0/0
2	ACT	A	861	-	-	0/0/0/0	0/0/0/0
6	BTB	A	870	9	-	0/21/21/21	0/0/0/0
6	BTB	A	871	-	-	0/21/21/21	0/0/0/0
7	GOL	A	880	-	-	0/4/4/4	0/0/0/0

Continued on next page...

Continued from previous page...

Mol	Type	Chain	Res	Link	Chirals	Torsions	Rings
3	HEM	B	500	1	-	0/10/54/54	0/0/8/8
4	H4B	B	600	-	-	0/8/17/17	0/2/2/2
5	Q16	B	800	-	-	0/11/20/20	0/3/3/3
2	ACT	B	860	-	-	0/0/0/0	0/0/0/0
2	ACT	B	861	-	-	0/0/0/0	0/0/0/0
6	BTB	B	870	9	-	0/21/21/21	0/0/0/0
6	BTB	B	871	-	-	0/21/21/21	0/0/0/0

All (21) bond length outliers are listed below:

Mol	Chain	Res	Type	Atoms	Z	Observed(Å)	Ideal(Å)
3	B	500	HEM	C3B-C4B	-6.19	1.46	1.51
3	A	500	HEM	C3B-C4B	-5.64	1.46	1.51
3	B	500	HEM	C3D-C4D	-4.90	1.45	1.51
3	A	500	HEM	C3D-C4D	-4.49	1.45	1.51
3	A	500	HEM	C2C-C1C	-3.45	1.46	1.52
3	B	500	HEM	C2C-C1C	-3.33	1.46	1.52
3	A	500	HEM	C2D-C1D	-2.15	1.44	1.51
3	B	500	HEM	C2B-C1B	-2.14	1.44	1.51
3	B	500	HEM	C2D-C1D	-2.02	1.45	1.51
3	A	500	HEM	C2B-C1B	-2.01	1.45	1.51
3	B	500	HEM	C3B-CAB	2.18	1.55	1.51
3	A	500	HEM	C3C-CAC	2.29	1.55	1.51
3	A	500	HEM	C3B-CAB	2.33	1.55	1.51
3	B	500	HEM	FE-NB	2.39	2.10	1.97
3	B	500	HEM	C1C-NC	2.43	1.39	1.36
3	B	500	HEM	C3C-CAC	2.55	1.56	1.51
3	A	500	HEM	FE-NB	2.58	2.11	1.97
3	B	500	HEM	C4C-NC	2.82	1.39	1.36
3	B	500	HEM	FE-NC	2.83	2.07	1.95
3	A	500	HEM	C1C-NC	3.08	1.39	1.36
3	A	500	HEM	FE-NC	3.18	2.08	1.95

All (44) bond angle outliers are listed below:

Mol	Chain	Res	Type	Atoms	Z	Observed(°)	Ideal(°)
3	A	500	HEM	CBA-CAA-C2A	-5.16	103.27	112.53
3	B	500	HEM	CBA-CAA-C2A	-4.63	104.24	112.53
4	B	600	H4B	N3-C2-N1	-3.51	119.78	125.53
4	A	600	H4B	N3-C2-N1	-3.37	120.02	125.53
5	B	800	Q16	C05-C06-N01	-3.17	119.39	122.96
5	A	800	Q16	C05-C06-N01	-3.08	119.49	122.96

Continued on next page...

Continued from previous page...

Mol	Chain	Res	Type	Atoms	Z	Observed(°)	Ideal(°)
6	B	871	BTB	O1-C1-C2	-2.61	104.82	111.12
5	B	800	Q16	C04-C05-C06	-2.42	118.76	120.28
3	A	500	HEM	CBD-CAD-C3D	-2.40	106.57	113.55
5	B	800	Q16	C25-C26-N21	-2.30	120.36	122.96
3	B	500	HEM	CBD-CAD-C3D	-2.28	106.92	113.55
3	B	500	HEM	CMA-C3A-C4A	-2.18	124.75	128.36
3	B	500	HEM	C3B-C4B-NB	-2.07	107.67	111.63
5	A	800	Q16	C25-C26-N21	-2.02	120.69	122.96
5	B	800	Q16	C12-C26-N21	2.04	120.11	115.83
5	B	800	Q16	C3'-C4'-C5'	2.18	105.62	103.59
4	B	600	H4B	C4A-C8A-N8	2.18	121.00	118.43
3	B	500	HEM	C2D-C3D-C4D	2.23	105.27	101.50
4	A	600	H4B	C4A-C8A-N8	2.36	121.22	118.43
5	B	800	Q16	C4'-C3'-C2'	2.37	107.75	102.69
3	A	500	HEM	C2D-C3D-C4D	2.43	105.62	101.50
3	B	500	HEM	C3B-C4B-CHC	2.54	126.74	123.16
5	B	800	Q16	C08-C06-C05	2.57	124.24	120.75
3	B	500	HEM	CMD-C2D-C3D	2.62	125.93	114.35
4	B	600	H4B	C2-N1-C8A	2.67	120.54	114.54
3	A	500	HEM	C3B-C4B-CHC	2.73	127.00	123.16
3	A	500	HEM	CMD-C2D-C3D	2.76	126.56	114.35
4	A	600	H4B	C2-N1-C8A	2.77	120.77	114.54
5	A	800	Q16	C22-N21-C26	3.61	120.80	118.23
3	B	500	HEM	CMB-C2B-C3B	3.81	126.05	116.53
4	B	600	H4B	C4-N3-C2	4.01	121.50	115.94
4	A	600	H4B	C4-N3-C2	4.01	121.51	115.94
5	B	800	Q16	C22-N21-C26	4.25	121.25	118.23
3	A	500	HEM	CMB-C2B-C3B	4.25	127.14	116.53
4	B	600	H4B	C4-C4A-C8A	4.27	118.43	114.56
3	B	500	HEM	CAD-C3D-C2D	4.34	125.68	113.22
3	A	500	HEM	CAD-C3D-C2D	4.44	125.99	113.22
3	A	500	HEM	CMC-C2C-C3C	4.48	127.71	116.53
3	A	500	HEM	CAD-C3D-C4D	4.50	128.34	112.47
4	A	600	H4B	C4-C4A-C8A	4.55	118.68	114.56
3	B	500	HEM	CMC-C2C-C3C	4.56	127.92	116.53
3	B	500	HEM	CAD-C3D-C4D	4.70	129.03	112.47
5	A	800	Q16	C02-N01-C06	5.84	122.38	118.23
5	B	800	Q16	C02-N01-C06	6.63	122.94	118.23

There are no chirality outliers.

There are no torsion outliers.

There are no ring outliers.

11 monomers are involved in 17 short contacts:

Mol	Chain	Res	Type	Clashes	Symm-Clashes
3	A	500	HEM	1	0
4	A	600	H4B	1	0
5	A	800	Q16	1	0
6	A	870	BTB	2	0
6	A	871	BTB	4	0
7	A	880	GOL	1	0
3	B	500	HEM	2	0
4	B	600	H4B	1	0
5	B	800	Q16	2	0
6	B	870	BTB	1	0
6	B	871	BTB	2	0

5.7 Other polymers [i](#)

There are no such residues in this entry.

5.8 Polymer linkage issues [i](#)

There are no chain breaks in this entry.

6 Fit of model and data ⓘ

6.1 Protein, DNA and RNA chains ⓘ

In the following table, the column labelled ‘#RSRZ> 2’ contains the number (and percentage) of RSRZ outliers, followed by percent RSRZ outliers for the chain as percentile scores relative to all X-ray entries and entries of similar resolution. The OWAB column contains the minimum, median, 95th percentile and maximum values of the occupancy-weighted average B-factor per residue. The column labelled ‘Q< 0.9’ lists the number of (and percentage) of residues with an average occupancy less than 0.9.

Mol	Chain	Analysed	<RSRZ>	#RSRZ>2	OWAB(Å ²)	Q<0.9
1	A	401/440 (91%)	0.07	15 (3%) 45 51	14, 26, 60, 97	0
1	B	402/440 (91%)	-0.05	11 (2%) 58 64	13, 23, 56, 105	0
All	All	803/880 (91%)	0.01	26 (3%) 51 57	13, 25, 58, 105	0

All (26) RSRZ outliers are listed below:

Mol	Chain	Res	Type	RSRZ
1	A	237	GLY	4.4
1	B	67	LYS	3.8
1	A	119	ALA	3.6
1	A	89	GLN	3.5
1	B	89	GLN	3.1
1	B	68	PHE	3.0
1	B	90	GLN	2.9
1	B	120	PRO	2.9
1	B	259	GLY	2.7
1	B	388	ARG	2.7
1	B	119	ALA	2.7
1	A	388	ARG	2.6
1	A	412	LEU	2.5
1	A	304	LEU	2.5
1	B	257	GLN	2.5
1	A	121	GLU	2.4
1	B	121	GLU	2.4
1	A	120	PRO	2.4
1	A	448	ILE	2.3
1	A	202	ARG	2.2
1	A	141	SER	2.2
1	B	122	GLN	2.2
1	A	297	ASP	2.1
1	A	90	GLN	2.1

Continued on next page...

Continued from previous page...

Mol	Chain	Res	Type	RSRZ
1	A	122	GLN	2.0
1	A	445	TRP	2.0

6.2 Non-standard residues in protein, DNA, RNA chains [i](#)

There are no non-standard protein/DNA/RNA residues in this entry.

6.3 Carbohydrates [i](#)

There are no carbohydrates in this entry.

6.4 Ligands [i](#)

In the following table, the Atoms column lists the number of modelled atoms in the group and the number defined in the chemical component dictionary. LLDF column lists the quality of electron density of the group with respect to its neighbouring residues in protein, DNA or RNA chains. The B-factors column lists the minimum, median, 95th percentile and maximum values of B factors of atoms in the group. The column labelled 'Q< 0.9' lists the number of atoms with occupancy less than 0.9.

Mol	Type	Chain	Res	Atoms	RSCC	RSR	LLDF	B-factors(Å ²)	Q<0.9
2	ACT	A	860	4/4	0.91	0.14	7.60	29,39,45,76	0
6	BTB	A	870	14/14	0.89	0.16	5.80	20,70,84,84	0
5	Q16	B	800	26/26	0.91	0.17	4.83	15,44,91,96	0
5	Q16	A	800	26/26	0.91	0.18	4.19	18,51,95,101	0
2	ACT	A	861	4/4	0.92	0.14	4.13	25,38,39,53	0
2	ACT	B	861	4/4	0.94	0.10	1.95	24,39,45,54	0
6	BTB	B	870	14/14	0.93	0.11	1.35	19,24,29,30	0
3	HEM	A	500	43/43	0.98	0.12	0.75	14,19,26,33	0
3	HEM	B	500	43/43	0.98	0.10	0.43	12,16,23,25	0
4	H4B	A	600	17/17	0.95	0.09	-0.51	16,21,25,28	0
2	ACT	B	860	4/4	0.95	0.08	-0.51	31,43,44,47	0
4	H4B	B	600	17/17	0.96	0.09	-0.52	13,18,22,23	0
8	ZN	A	900	1/1	1.00	0.05	-1.90	18,18,18,18	0
9	GD	B	1490	1/1	1.00	0.09	-	21,21,21,21	0
6	BTB	A	871	14/14	0.79	0.18	-	37,71,81,84	0
7	GOL	A	880	6/6	0.93	0.22	-	24,27,54,71	0
9	GD	A	1490	1/1	0.99	0.05	-	49,49,49,49	1
6	BTB	B	871	14/14	0.82	0.23	-	32,64,83,93	0

6.5 Other polymers [i](#)

There are no such residues in this entry.