



Full wwPDB X-ray Structure Validation Report ⓘ

Feb 1, 2016 – 03:40 PM GMT

PDB ID : 4D3D
Title : Structure of Imine Reductase BcSIREd from *Bacillus cereus* BAG3X2
Authors : Man, H.; Hart, S.; Turkenburg, J.P.; Grogan, G.
Deposited on : 2014-10-21
Resolution : 1.71 Å(reported)

This is a Full wwPDB X-ray Structure Validation Report for a publicly released PDB entry.
We welcome your comments at validation@mail.wwpdb.org
A user guide is available at
<http://wwpdb.org/validation/2016/XrayValidationReportHelp>
with specific help available everywhere you see the ⓘ symbol.

The following versions of software and data (see [references ⓘ](#)) were used in the production of this report:

MolProbity : 4.02b-467
Mogul : 1.7 (RC4), CSD as536be (2015)
Xtriage (Phenix) : 1.9-1692
EDS : rb-20026688
Percentile statistics : 20151230.v01 (using entries in the PDB archive December 30th 2015)
Refmac : 5.8.0135
CCP4 : 6.5.0
Ideal geometry (proteins) : Engh & Huber (2001)
Ideal geometry (DNA, RNA) : Parkinson et al. (1996)
Validation Pipeline (wwPDB-VP) : trunk26865

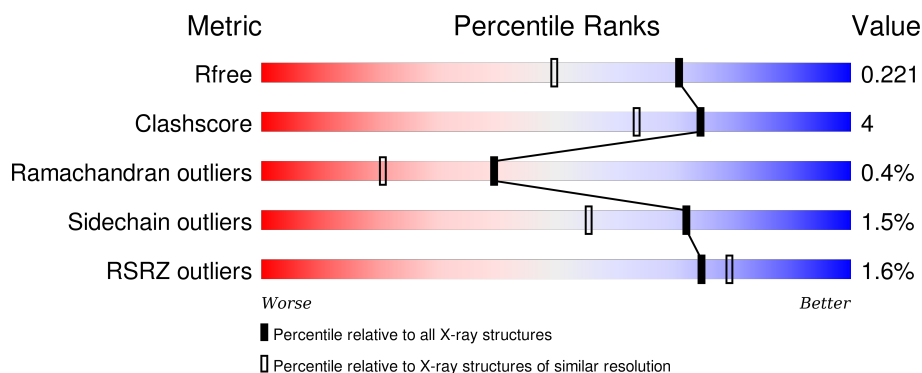
1 Overall quality at a glance

The following experimental techniques were used to determine the structure:

X-RAY DIFFRACTION

The reported resolution of this entry is 1.71 Å.

Percentile scores (ranging between 0-100) for global validation metrics of the entry are shown in the following graphic. The table shows the number of entries on which the scores are based.



Metric	Whole archive (#Entries)	Similar resolution (#Entries, resolution range(Å))
R_{free}	91344	3998 (1.74-1.70)
Clashscore	102246	4425 (1.74-1.70)
Ramachandran outliers	100387	4360 (1.74-1.70)
Sidechain outliers	100360	4360 (1.74-1.70)
RSRZ outliers	91569	4010 (1.74-1.70)

The table below summarises the geometric issues observed across the polymeric chains and their fit to the electron density. The red, orange, yellow and green segments on the lower bar indicate the fraction of residues that contain outliers for ≥ 3 , 2, 1 and 0 types of geometric quality criteria. A grey segment represents the fraction of residues that are not modelled. The numeric value for each fraction is indicated below the corresponding segment, with a dot representing fractions $\leq 5\%$. The upper red bar (where present) indicates the fraction of residues that have poor fit to the electron density. The numeric value is given above the bar.

Mol	Chain	Length	Quality of chain
1	A	310	<div> <div> <div></div> <div>85%</div> <div>6% • 8%</div> </div> </div>
1	B	310	<div> <div> <div>2%</div> <div>80%</div> <div>10% • 8%</div> </div> </div>

2 Entry composition [i](#)

There are 4 unique types of molecules in this entry. The entry contains 4754 atoms, of which 0 are hydrogens and 0 are deuteriums.

In the tables below, the ZeroOcc column contains the number of atoms modelled with zero occupancy, the AltConf column contains the number of residues with at least one atom in alternate conformation and the Trace column contains the number of residues modelled with at most 2 atoms.

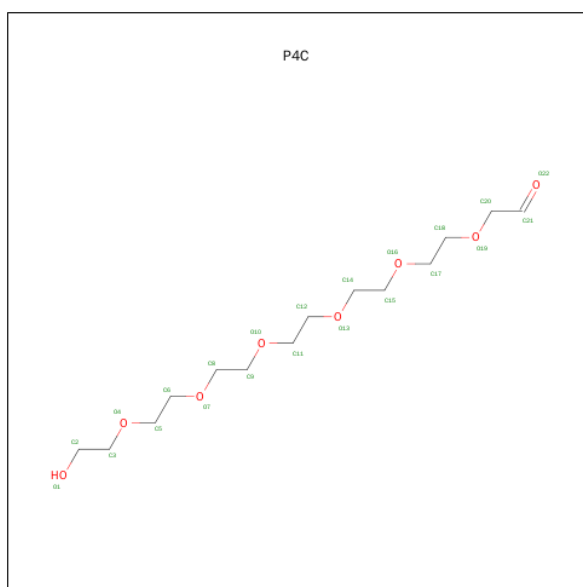
- Molecule 1 is a protein called IMINE REDUCTASE.

Mol	Chain	Residues	Atoms					ZeroOcc	AltConf	Trace
1	A	285	Total	C	N	O	S	0	1	0
			2186	1393	362	420	11			
1	B	286	Total	C	N	O	S	0	9	0
			2212	1413	359	429	11			

- Molecule 2 is MAGNESIUM ION (three-letter code: MG) (formula: Mg).

Mol	Chain	Residues	Atoms		ZeroOcc	AltConf
2	A	1	Total	Mg	0	0
			1	1		

- Molecule 3 is O-ACETALDEHYDYL-HEXAETHYLENE GLYCOL (three-letter code: P4C) (formula: C₁₄H₂₈O₈).



Mol	Chain	Residues	Atoms			ZeroOcc	AltConf
3	A	1	Total	C	O	0	0
			16	10	6		

Continued on next page...

Continued from previous page...

Mol	Chain	Residues	Atoms			ZeroOcc	AltConf
3	B	1	Total	C	O	0	0
			22	14	8		

- Molecule 4 is water.

Mol	Chain	Residues	Atoms		ZeroOcc	AltConf
4	A	184	Total	O	0	0
			184	184		
4	B	133	Total	O	0	0
			133	133		

- Molecule 1: IMINE REDUCTASE



4 Data and refinement statistics

Property	Value	Source
Space group	P 21 21 21	Depositor
Cell constants a, b, c, α , β , γ	55.78 Å 59.59 Å 214.87 Å 90.00° 90.00° 90.00°	Depositor
Resolution (Å)	107.43 – 1.71 32.45 – 1.71	Depositor EDS
% Data completeness (in resolution range)	98.9 (107.43-1.71) 98.9 (32.45-1.71)	Depositor EDS
R_{merge}	0.06	Depositor
R_{sym}	(Not available)	Depositor
$\langle I/\sigma(I) \rangle$ ¹	1.79 (at 1.71 Å)	Xtriage
Refinement program	REFMAC 5.8.0073	Depositor
R, R_{free}	0.178 , 0.210 0.189 , 0.221	Depositor DCC
R_{free} test set	3775 reflections (5.11%)	DCC
Wilson B-factor (Å ²)	21.0	Xtriage
Anisotropy	0.355	Xtriage
Bulk solvent k_{sol} (e/Å ³), B_{sol} (Å ²)	0.35 , 39.7	EDS
Estimated twinning fraction	No twinning to report.	Xtriage
L-test for twinning ²	$\langle L \rangle = 0.48$, $\langle L^2 \rangle = 0.31$	Xtriage
Outliers	0 of 77697 reflections	Xtriage
F_o, F_c correlation	0.96	EDS
Total number of atoms	4754	wwPDB-VP
Average B, all atoms (Å ²)	23.0	wwPDB-VP

Xtriage's analysis on translational NCS is as follows: *The largest off-origin peak in the Patterson function is 4.71% of the height of the origin peak. No significant pseudotranslation is detected.*

¹Intensities estimated from amplitudes.

²Theoretical values of $\langle |L| \rangle$, $\langle L^2 \rangle$ for acentric reflections are 0.5, 0.375 respectively for untwinned datasets, and 0.333, 0.2 for perfectly twinned datasets.

5 Model quality ⓘ

5.1 Standard geometry ⓘ

Bond lengths and bond angles in the following residue types are not validated in this section: MG, P4C

The Z score for a bond length (or angle) is the number of standard deviations the observed value is removed from the expected value. A bond length (or angle) with $|Z| > 5$ is considered an outlier worth inspection. RMSZ is the root-mean-square of all Z scores of the bond lengths (or angles).

Mol	Chain	Bond lengths		Bond angles	
		RMSZ	$\# Z > 5$	RMSZ	$\# Z > 5$
1	A	1.14	1/2235 (0.0%)	1.13	12/3038 (0.4%)
1	B	1.10	2/2285 (0.1%)	1.15	18/3109 (0.6%)
All	All	1.12	3/4520 (0.1%)	1.14	30/6147 (0.5%)

All (3) bond length outliers are listed below:

Mol	Chain	Res	Type	Atoms	Z	Observed(Å)	Ideal(Å)
1	B	269	GLU	CD-OE1	8.49	1.34	1.25
1	B	286	ARG	CZ-NH1	6.01	1.40	1.33
1	A	294	SER	CA-CB	5.72	1.61	1.52

All (30) bond angle outliers are listed below:

Mol	Chain	Res	Type	Atoms	Z	Observed(°)	Ideal(°)
1	B	286	ARG	NE-CZ-NH2	-14.34	113.13	120.30
1	A	286	ARG	NE-CZ-NH2	-13.38	113.61	120.30
1	B	177	ARG	NE-CZ-NH1	11.82	126.21	120.30
1	A	286	ARG	NE-CZ-NH1	11.62	126.11	120.30
1	B	185	MET	CG-SD-CE	-11.08	82.47	100.20
1	B	286	ARG	NE-CZ-NH1	10.55	125.58	120.30
1	A	53	ARG	NE-CZ-NH2	-10.09	115.25	120.30
1	B	177	ARG	NE-CZ-NH2	-9.45	115.58	120.30
1	A	165	ARG	NE-CZ-NH2	-9.43	115.58	120.30
1	A	177	ARG	NE-CZ-NH1	9.12	124.86	120.30
1	A	180	ASP	CB-CG-OD1	8.77	126.19	118.30
1	A	177	ARG	NE-CZ-NH2	-8.31	116.15	120.30
1	B	165	ARG	NE-CZ-NH2	-8.25	116.17	120.30
1	B	114	ASP	CB-CG-OD1	8.19	125.67	118.30
1	B	252	ARG	NE-CZ-NH1	8.00	124.30	120.30
1	B	53[A]	ARG	NE-CZ-NH2	-7.70	116.45	120.30

Continued on next page...

Continued from previous page...

Mol	Chain	Res	Type	Atoms	Z	Observed(°)	Ideal(°)
1	B	53[B]	ARG	NE-CZ-NH2	-7.70	116.45	120.30
1	A	37	MET	CG-SD-CE	-6.53	89.75	100.20
1	B	240	ARG	NE-CZ-NH2	-6.49	117.05	120.30
1	B	193	ASP	CB-CG-OD2	-6.31	112.62	118.30
1	B	285	ARG	NE-CZ-NH1	5.97	123.28	120.30
1	A	180	ASP	CB-CG-OD2	-5.84	113.05	118.30
1	A	113	SER	CB-CA-C	5.57	120.68	110.10
1	A	240	ARG	NE-CZ-NH2	-5.55	117.53	120.30
1	A	53	ARG	NE-CZ-NH1	5.51	123.06	120.30
1	B	252	ARG	NE-CZ-NH2	-5.50	117.55	120.30
1	B	306	ASN	N-CA-C	-5.43	96.34	111.00
1	B	68	ARG	NE-CZ-NH2	-5.40	117.60	120.30
1	B	180	ASP	CB-CG-OD1	5.25	123.03	118.30
1	B	165	ARG	NE-CZ-NH1	5.04	122.82	120.30

There are no chirality outliers.

There are no planarity outliers.

5.2 Too-close contacts ⓘ

In the following table, the Non-H and H(model) columns list the number of non-hydrogen atoms and hydrogen atoms in the chain respectively. The H(added) column lists the number of hydrogen atoms added and optimized by MolProbity. The Clashes column lists the number of clashes within the asymmetric unit, whereas Symm-Clashes lists symmetry related clashes.

Mol	Chain	Non-H	H(model)	H(added)	Clashes	Symm-Clashes
1	A	2186	0	2141	11	0
1	B	2212	0	2159	23	0
2	A	1	0	0	0	0
3	A	16	0	21	0	0
3	B	22	0	28	6	0
4	A	184	0	0	1	0
4	B	133	0	0	3	0
All	All	4754	0	4349	35	0

The all-atom clashscore is defined as the number of clashes found per 1000 atoms (including hydrogen atoms). The all-atom clashscore for this structure is 4.

All (35) close contacts within the same asymmetric unit are listed below, sorted by their clash magnitude.

Atom-1	Atom-2	Interatomic distance (Å)	Clash overlap (Å)
1:B:306:ASN:O	1:B:307:SER:C	2.22	0.78
1:A:73:ASN:H	1:A:73:ASN:HD22	1.40	0.69
1:A:232:LYS:CG	4:A:2146:HOH:O	2.47	0.63
1:A:186:LEU:HD13	1:A:186:LEU:C	2.24	0.57
1:B:225:ALA:CB	3:B:1308:P4C:H21	2.33	0.57
1:B:73[B]:ASN:HD22	1:B:73[B]:ASN:H	1.53	0.57
1:A:110:ASN:HD22	1:A:112:SER:H	1.53	0.56
3:B:1308:P4C:H81	4:B:2133:HOH:O	2.06	0.54
1:B:305:LYS:O	1:B:306:ASN:O	2.26	0.54
1:B:153:TYR:OH	1:B:191:GLN:NE2	2.41	0.53
3:B:1308:P4C:H111	4:B:2133:HOH:O	2.09	0.52
1:B:30:LEU:HD12	1:B:52:ASN:HB2	1.91	0.52
1:A:73:ASN:H	1:A:73:ASN:ND2	2.08	0.52
1:B:133:HIS:HE1	1:B:135:THR:OG1	1.93	0.51
1:B:225:ALA:HB1	3:B:1308:P4C:H21	1.93	0.51
1:B:252:ARG:HD3	4:B:2106:HOH:O	2.11	0.50
1:A:133:HIS:HE1	1:A:135:THR:OG1	1.96	0.49
1:B:225:ALA:HB3	3:B:1308:P4C:H21	1.95	0.48
1:A:200:LEU:HD22	1:B:280:VAL:HG13	1.94	0.48
1:B:113:SER:HA	1:B:185:MET:HE1	1.97	0.47
1:A:110:ASN:C	1:A:110:ASN:HD22	2.18	0.46
1:B:257:LEU:HD22	1:B:288:MET:HG3	1.99	0.45
1:B:73[B]:ASN:H	1:B:73[B]:ASN:ND2	2.13	0.45
1:B:229:SER:OG	3:B:1308:P4C:H171	2.17	0.45
1:B:58:ALA:HB3	1:B:68:ARG:HD3	1.99	0.45
1:B:73[A]:ASN:HD21	1:B:102:ASN:HD22	1.65	0.44
1:B:169:GLU:HA	1:B:172:THR:O	2.19	0.43
1:B:73[A]:ASN:HD22	1:B:73[A]:ASN:HA	1.42	0.43
1:A:110:ASN:ND2	1:A:112:SER:H	2.16	0.43
1:A:158:ARG:O	1:A:158:ARG:HG3	2.18	0.43
1:B:89:TYR:CD1	1:B:112[B]:SER:OG	2.72	0.43
1:B:133:HIS:CE1	1:B:135:THR:OG1	2.72	0.42
1:A:169:GLU:HA	1:A:172:THR:O	2.20	0.41
1:B:305:LYS:C	1:B:306:ASN:O	2.56	0.41
1:B:114:ASP:O	1:B:185:MET:HE2	2.21	0.40

There are no symmetry-related clashes.

5.3 Torsion angles

5.3.1 Protein backbone

In the following table, the Percentiles column shows the percent Ramachandran outliers of the chain as a percentile score with respect to all X-ray entries followed by that with respect to entries of similar resolution.

The Analysed column shows the number of residues for which the backbone conformation was analysed, and the total number of residues.

Mol	Chain	Analysed	Favoured	Allowed	Outliers	Percentiles	
1	A	284/310 (92%)	281 (99%)	3 (1%)	0	100	100
1	B	293/310 (94%)	285 (97%)	6 (2%)	2 (1%)	26	9
All	All	577/620 (93%)	566 (98%)	9 (2%)	2 (0%)	39	26

All (2) Ramachandran outliers are listed below:

Mol	Chain	Res	Type
1	B	23	LYS
1	B	306	ASN

5.3.2 Protein sidechains

In the following table, the Percentiles column shows the percent sidechain outliers of the chain as a percentile score with respect to all X-ray entries followed by that with respect to entries of similar resolution.

The Analysed column shows the number of residues for which the sidechain conformation was analysed, and the total number of residues.

Mol	Chain	Analysed	Rotameric	Outliers	Percentiles	
1	A	230/258 (89%)	226 (98%)	4 (2%)	68	50
1	B	234/258 (91%)	230 (98%)	4 (2%)	68	50
All	All	464/516 (90%)	456 (98%)	8 (2%)	72	50

All (8) residues with a non-rotameric sidechain are listed below:

Mol	Chain	Res	Type
1	A	73	ASN
1	A	110	ASN
1	A	158	ARG
1	A	251	ASP

Continued on next page...

Continued from previous page...

Mol	Chain	Res	Type
1	B	53[A]	ARG
1	B	53[B]	ARG
1	B	118	LYS
1	B	158	ARG

Some sidechains can be flipped to improve hydrogen bonding and reduce clashes. All (6) such sidechains are listed below:

Mol	Chain	Res	Type
1	A	35	GLN
1	A	73	ASN
1	A	110	ASN
1	A	133	HIS
1	B	133	HIS
1	B	191	GLN

5.3.3 RNA [i](#)

There are no RNA molecules in this entry.

5.4 Non-standard residues in protein, DNA, RNA chains [i](#)

There are no non-standard protein/DNA/RNA residues in this entry.

5.5 Carbohydrates [i](#)

There are no carbohydrates in this entry.

5.6 Ligand geometry [i](#)

Of 3 ligands modelled in this entry, 1 is monoatomic - leaving 2 for Mogul analysis.

In the following table, the Counts columns list the number of bonds (or angles) for which Mogul statistics could be retrieved, the number of bonds (or angles) that are observed in the model and the number of bonds (or angles) that are defined in the chemical component dictionary. The Link column lists molecule types, if any, to which the group is linked. The Z score for a bond length (or angle) is the number of standard deviations the observed value is removed from the expected value. A bond length (or angle) with $|Z| > 2$ is considered an outlier worth inspection. RMSZ is the root-mean-square of all Z scores of the bond lengths (or angles).

Mol	Type	Chain	Res	Link	Bond lengths			Bond angles		
					Counts	RMSZ	# Z > 2	Counts	RMSZ	# Z > 2
3	P4C	A	1307	-	15,15,21	0.37	0	14,14,20	0.63	0
3	P4C	B	1308	-	21,21,21	1.79	7 (33%)	19,20,20	1.71	5 (26%)

In the following table, the Chirals column lists the number of chiral outliers, the number of chiral centers analysed, the number of these observed in the model and the number defined in the chemical component dictionary. Similar counts are reported in the Torsion and Rings columns. '-' means no outliers of that kind were identified.

Mol	Type	Chain	Res	Link	Chirals	Torsions	Rings
3	P4C	A	1307	-	-	0/13/13/19	0/0/0/0
3	P4C	B	1308	-	-	0/18/19/19	0/0/0/0

All (7) bond length outliers are listed below:

Mol	Chain	Res	Type	Atoms	Z	Observed(Å)	Ideal(Å)
3	B	1308	P4C	O19-C20	2.06	1.49	1.42
3	B	1308	P4C	O10-C9	2.08	1.50	1.42
3	B	1308	P4C	O16-C17	2.14	1.51	1.42
3	B	1308	P4C	C18-C17	2.24	1.60	1.48
3	B	1308	P4C	O13-C12	2.28	1.51	1.42
3	B	1308	P4C	O16-C15	2.31	1.51	1.42
3	B	1308	P4C	O22-C21	4.07	1.46	1.19

All (5) bond angle outliers are listed below:

Mol	Chain	Res	Type	Atoms	Z	Observed(°)	Ideal(°)
3	B	1308	P4C	C20-O19-C18	-2.43	104.48	112.37
3	B	1308	P4C	O10-C9-C8	2.08	119.61	110.36
3	B	1308	P4C	C14-O13-C12	2.44	123.79	113.31
3	B	1308	P4C	C17-O16-C15	3.28	127.39	113.31
3	B	1308	P4C	C11-O10-C9	4.05	130.71	113.31

There are no chirality outliers.

There are no torsion outliers.

There are no ring outliers.

1 monomer is involved in 6 short contacts:

Mol	Chain	Res	Type	Clashes	Symm-Clashes
3	B	1308	P4C	6	0

5.7 Other polymers

There are no such residues in this entry.

5.8 Polymer linkage issues

There are no chain breaks in this entry.

6 Fit of model and data [i](#)

6.1 Protein, DNA and RNA chains [i](#)

In the following table, the column labelled ‘#RSRZ> 2’ contains the number (and percentage) of RSRZ outliers, followed by percent RSRZ outliers for the chain as percentile scores relative to all X-ray entries and entries of similar resolution. The OWAB column contains the minimum, median, 95th percentile and maximum values of the occupancy-weighted average B-factor per residue. The column labelled ‘Q< 0.9’ lists the number of (and percentage) of residues with an average occupancy less than 0.9.

Mol	Chain	Analysed	<RSRZ>	#RSRZ>2	OWAB(Å ²)	Q<0.9
1	A	285/310 (91%)	-0.06	3 (1%) 82 86	12, 20, 33, 45	0
1	B	286/310 (92%)	-0.03	6 (2%) 67 71	13, 21, 39, 61	0
All	All	571/620 (92%)	-0.05	9 (1%) 74 79	12, 21, 37, 61	0

All (9) RSRZ outliers are listed below:

Mol	Chain	Res	Type	RSRZ
1	B	22	ARG	5.9
1	B	63	ALA	3.9
1	A	97	GLU	2.5
1	B	307	SER	2.5
1	B	53[A]	ARG	2.4
1	B	56	SER	2.4
1	A	111	LEU	2.3
1	A	104	PHE	2.3
1	B	148	SER	2.1

6.2 Non-standard residues in protein, DNA, RNA chains [i](#)

There are no non-standard protein/DNA/RNA residues in this entry.

6.3 Carbohydrates [i](#)

There are no carbohydrates in this entry.

6.4 Ligands [i](#)

In the following table, the Atoms column lists the number of modelled atoms in the group and the number defined in the chemical component dictionary. LLDF column lists the quality of electron

density of the group with respect to its neighbouring residues in protein, DNA or RNA chains. The B-factors column lists the minimum, median, 95th percentile and maximum values of B factors of atoms in the group. The column labelled 'Q< 0.9' lists the number of atoms with occupancy less than 0.9.

Mol	Type	Chain	Res	Atoms	RSCC	RSR	LLDF	B-factors(Å ²)	Q<0.9
3	P4C	B	1308	22/22	0.81	0.14	1.87	37,47,52,56	0
3	P4C	A	1307	16/22	0.86	0.11	1.42	35,43,52,54	0
2	MG	A	1306	1/1	0.98	0.16	-	20,20,20,20	0

6.5 Other polymers

There are no such residues in this entry.