



# wwPDB X-ray Structure Validation Summary Report ⓘ

Feb 1, 2016 – 01:27 AM GMT

PDB ID : 2D7R  
Title : Crystal structure of pp-GalNAc-T10 complexed with GalNAc-Ser on lectin domain  
Authors : Kubota, T.; Shiba, T.; Sugioka, S.; Kato, R.; Wakatsuki, S.; Narimatsu, H.  
Deposited on : 2005-11-25  
Resolution : 2.80 Å(reported)

This is a wwPDB X-ray Structure Validation Summary Report for a publicly released PDB entry.  
We welcome your comments at [validation@mail.wwpdb.org](mailto:validation@mail.wwpdb.org)  
A user guide is available at  
<http://wwpdb.org/validation/2016/XrayValidationReportHelp>  
with specific help available everywhere you see the ⓘ symbol.

---

The following versions of software and data (see [references ⓘ](#)) were used in the production of this report:

MolProbity : 4.02b-467  
Mogul : 1.7 (RC4), CSD as536be (2015)  
Xtriage (Phenix) : 1.9-1692  
EDS : rb-20026688  
Percentile statistics : 20151230.v01 (using entries in the PDB archive December 30th 2015)  
Refmac : 5.8.0135  
CCP4 : 6.5.0  
Ideal geometry (proteins) : Engh & Huber (2001)  
Ideal geometry (DNA, RNA) : Parkinson et al. (1996)  
Validation Pipeline (wwPDB-VP) : trunk26865

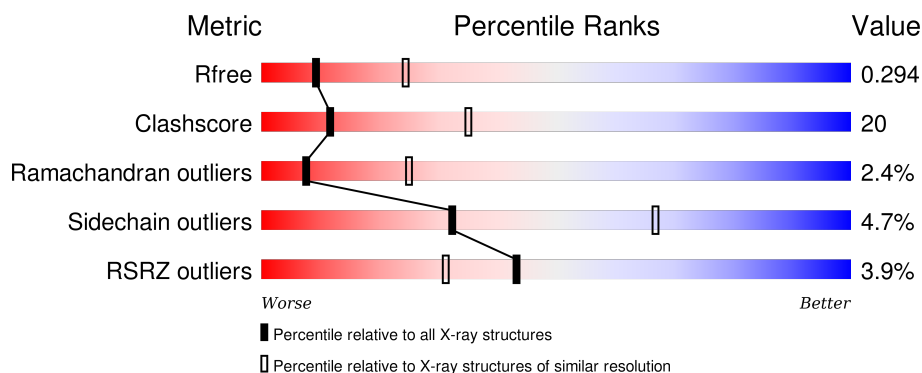
# 1 Overall quality at a glance ⓘ

The following experimental techniques were used to determine the structure:

## *X-RAY DIFFRACTION*

The reported resolution of this entry is 2.80 Å.

Percentile scores (ranging between 0-100) for global validation metrics of the entry are shown in the following graphic. The table shows the number of entries on which the scores are based.



Metric	Whole archive (#Entries)	Similar resolution (#Entries, resolution range(Å))
$R_{free}$	91344	2393 (2.80-2.80)
Clashscore	102246	2827 (2.80-2.80)
Ramachandran outliers	100387	2782 (2.80-2.80)
Sidechain outliers	100360	2784 (2.80-2.80)
RSRZ outliers	91569	2404 (2.80-2.80)

The table below summarises the geometric issues observed across the polymeric chains and their fit to the electron density. The red, orange, yellow and green segments on the lower bar indicate the fraction of residues that contain outliers for  $\geq 3$ , 2, 1 and 0 types of geometric quality criteria. A grey segment represents the fraction of residues that are not modelled. The numeric value for each fraction is indicated below the corresponding segment, with a dot representing fractions  $\leq 5\%$ . The upper red bar (where present) indicates the fraction of residues that have poor fit to the electron density. The numeric value is given above the bar.

Mol	Chain	Length	Quality of chain
1	A	570	<div> <div>4%</div> <div>60%</div> <div>31%</div> <div>6%</div> </div>

The following table lists non-polymeric compounds, carbohydrate monomers and non-standard residues in protein, DNA, RNA chains that are outliers for geometric or electron-density-fit criteria:

Mol	Type	Chain	Res	Chirality	Geometry	Clashes	Electron density
3	NAG	A	704	-	-	-	X

## 2 Entry composition

There are 8 unique types of molecules in this entry. The entry contains 4549 atoms, of which 0 are hydrogens and 0 are deuteriums.

In the tables below, the ZeroOcc column contains the number of atoms modelled with zero occupancy, the AltConf column contains the number of residues with at least one atom in alternate conformation and the Trace column contains the number of residues modelled with at most 2 atoms.

- Molecule 1 is a protein called Polypeptide N-acetylgalactosaminyltransferase 10.

Mol	Chain	Residues	Atoms					ZeroOcc	AltConf	Trace
1	A	536	Total	C	N	O	S	0	0	0
			4357	2762	778	789	28			

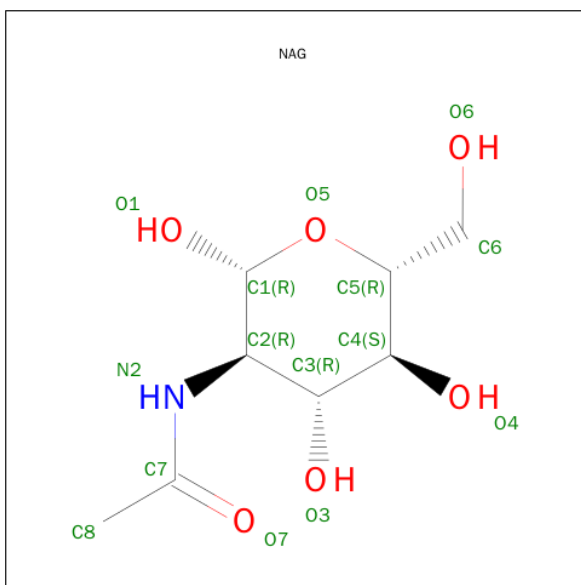
There are 6 discrepancies between the modelled and reference sequences:

Chain	Residue	Modelled	Actual	Comment	Reference
A	34	HIS	-	EXPRESSION TAG	UNP Q86SR1
A	35	HIS	-	EXPRESSION TAG	UNP Q86SR1
A	36	HIS	-	EXPRESSION TAG	UNP Q86SR1
A	37	HIS	-	EXPRESSION TAG	UNP Q86SR1
A	38	HIS	-	EXPRESSION TAG	UNP Q86SR1
A	39	HIS	-	EXPRESSION TAG	UNP Q86SR1

- Molecule 2 is a polymer of unknown type called SUGAR (2-MER).

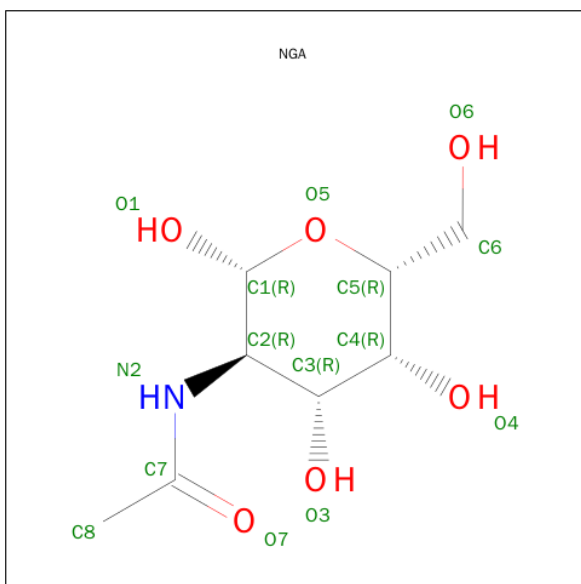
Mol	Chain	Residues	Atoms				ZeroOcc	AltConf
2	A	2	Total	C	N	O	0	0
			28	16	2	10		

- Molecule 3 is SUGAR (N-ACETYL-D-GLUCOSAMINE) (three-letter code: NAG) (formula: C<sub>8</sub>H<sub>15</sub>NO<sub>6</sub>).



Mol	Chain	Residues	Atoms				ZeroOcc	AltConf
3	A	1	Total	C	N	O	0	0
			14	8	1	5		
3	A	1	Total	C	N	O	0	0
			14	8	1	5		

- Molecule 4 is SUGAR (N-ACETYL-D-GALACTOSAMINE) (three-letter code: NGA) (formula:  $C_8H_{15}NO_6$ ).

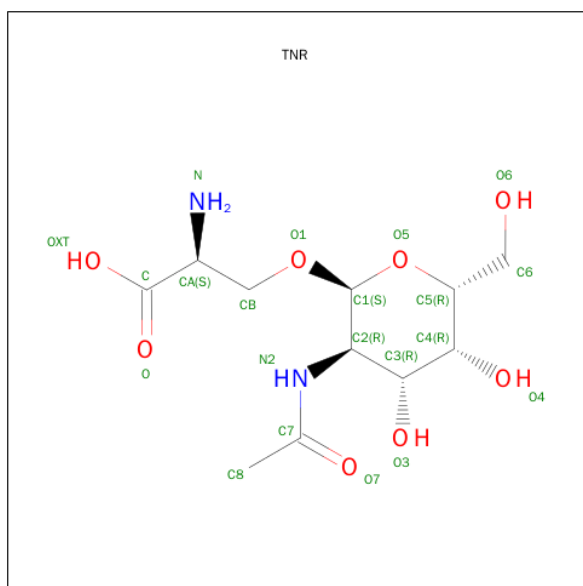


Mol	Chain	Residues	Atoms				ZeroOcc	AltConf
4	A	1	Total	C	N	O	0	0
			15	8	1	6		

- Molecule 5 is MANGANESE (II) ION (three-letter code: MN) (formula: Mn).

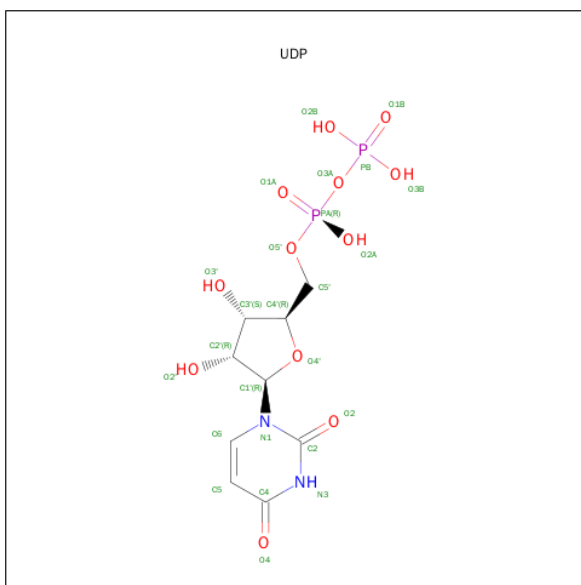
Mol	Chain	Residues	Atoms		ZeroOcc	AltConf
5	A	1	Total	Mn	0	0
			1	1		

- Molecule 6 is O-(2-ACETAMIDO-2-DEOXY-ALPHA-D-GALACTOPYRANOSYL)-L-SERINE (three-letter code: TNR) (formula: C<sub>11</sub>H<sub>20</sub>N<sub>2</sub>O<sub>8</sub>).



Mol	Chain	Residues	Atoms				ZeroOcc	AltConf
6	A	1	Total	C	N	O	0	0
			21	11	2	8		

- Molecule 7 is URIDINE-5'-DIPHOSPHATE (three-letter code: UDP) (formula: C<sub>9</sub>H<sub>14</sub>N<sub>2</sub>O<sub>12</sub>P<sub>2</sub>).



Mol	Chain	Residues	Atoms					ZeroOcc	AltConf
7	A	1	Total	C	N	O	P	0	0
			25	9	2	12	2		

- Molecule 8 is water.

Mol	Chain	Residues	Atoms	ZeroOcc	AltConf
8	A	74	Total O 74 74	0	0



- Molecule 1: Polypeptide N-acetylgalactosaminyltransferase 10



## 4 Data and refinement statistics

Property	Value	Source
Space group	C 2 2 21	Depositor
Cell constants a, b, c, $\alpha$ , $\beta$ , $\gamma$	80.19Å 132.81Å 138.95Å 90.00° 90.00° 90.00°	Depositor
Resolution (Å)	40.00 – 2.80 48.00 – 2.77	Depositor EDS
% Data completeness (in resolution range)	(Not available) (40.00-2.80) 97.7 (48.00-2.77)	Depositor EDS
$R_{merge}$	0.08	Depositor
$R_{sym}$	(Not available)	Depositor
$\langle I/\sigma(I) \rangle$ <sup>1</sup>	2.04 (at 2.77Å)	Xtriage
Refinement program	CNS 1.1	Depositor
R, $R_{free}$	0.229 , 0.298 0.229 , 0.294	Depositor DCC
$R_{free}$ test set	1813 reflections (9.84%)	DCC
Wilson B-factor (Å <sup>2</sup> )	58.0	Xtriage
Anisotropy	0.329	Xtriage
Bulk solvent $k_{sol}$ (e/Å <sup>3</sup> ), $B_{sol}$ (Å <sup>2</sup> )	0.32 , 45.3	EDS
Estimated twinning fraction	0.016 for 1/2*h-1/2*k,-3/2*h-1/2*k,-l 0.028 for 1/2*h+1/2*k,3/2*h-1/2*k,-l	Xtriage
L-test for twinning <sup>2</sup>	$\langle  L  \rangle = 0.49$ , $\langle L^2 \rangle = 0.33$	Xtriage
Outliers	1 of 18715 reflections (0.005%)	Xtriage
$F_o, F_c$ correlation	0.93	EDS
Total number of atoms	4549	wwPDB-VP
Average B, all atoms (Å <sup>2</sup> )	54.0	wwPDB-VP

Xtriage's analysis on translational NCS is as follows: *The largest off-origin peak in the Patterson function is 4.15% of the height of the origin peak. No significant pseudotranslation is detected.*

<sup>1</sup>Intensities estimated from amplitudes.

<sup>2</sup>Theoretical values of  $\langle |L| \rangle$ ,  $\langle L^2 \rangle$  for acentric reflections are 0.5, 0.375 respectively for untwinned datasets, and 0.333, 0.2 for perfectly twinned datasets.

## 5 Model quality [i](#)

### 5.1 Standard geometry [i](#)

Bond lengths and bond angles in the following residue types are not validated in this section: UDP, MN, NAG, NGA, TNR

The Z score for a bond length (or angle) is the number of standard deviations the observed value is removed from the expected value. A bond length (or angle) with  $|Z| > 5$  is considered an outlier worth inspection. RMSZ is the root-mean-square of all Z scores of the bond lengths (or angles).

Mol	Chain	Bond lengths		Bond angles	
		RMSZ	$\# Z  > 5$	RMSZ	$\# Z  > 5$
1	A	0.41	0/4481	0.62	0/6073

There are no bond length outliers.

There are no bond angle outliers.

There are no chirality outliers.

There are no planarity outliers.

### 5.2 Too-close contacts [i](#)

In the following table, the Non-H and H(model) columns list the number of non-hydrogen atoms and hydrogen atoms in the chain respectively. The H(added) column lists the number of hydrogen atoms added and optimized by MolProbity. The Clashes column lists the number of clashes within the asymmetric unit, whereas Symm-Clashes lists symmetry related clashes.

Mol	Chain	Non-H	H(model)	H(added)	Clashes	Symm-Clashes
1	A	4357	0	4229	178	0
2	A	28	0	25	1	0
3	A	28	0	26	1	0
4	A	15	0	15	2	0
5	A	1	0	0	0	0
6	A	21	0	19	0	0
7	A	25	0	11	0	0
8	A	74	0	0	2	0
All	All	4549	0	4325	179	0

The all-atom clashscore is defined as the number of clashes found per 1000 atoms (including hydrogen atoms). The all-atom clashscore for this structure is 20.

The worst 5 of 179 close contacts within the same asymmetric unit are listed below, sorted by

their clash magnitude.

Atom-1	Atom-2	Interatomic distance (Å)	Clash overlap (Å)
1:A:75:HIS:HE1	1:A:131:ARG:HH12	0.99	0.94
1:A:75:HIS:CE1	1:A:131:ARG:HH12	1.87	0.92
1:A:155:ASN:HD21	1:A:188:ASP:H	1.16	0.89
1:A:287:ALA:HB1	1:A:446:LEU:HD12	1.59	0.84
1:A:548:LYS:HD2	1:A:601:ASN:HA	1.59	0.83

There are no symmetry-related clashes.

## 5.3 Torsion angles [i](#)

### 5.3.1 Protein backbone [i](#)

In the following table, the Percentiles column shows the percent Ramachandran outliers of the chain as a percentile score with respect to all X-ray entries followed by that with respect to entries of similar resolution.

The Analysed column shows the number of residues for which the backbone conformation was analysed, and the total number of residues.

Mol	Chain	Analysed	Favoured	Allowed	Outliers	Percentiles	
1	A	534/570 (94%)	460 (86%)	61 (11%)	13 (2%)	7	25

5 of 13 Ramachandran outliers are listed below:

Mol	Chain	Res	Type
1	A	542	LYS
1	A	114	ASN
1	A	340	GLU
1	A	539	HIS
1	A	527	ILE

### 5.3.2 Protein sidechains [i](#)

In the following table, the Percentiles column shows the percent sidechain outliers of the chain as a percentile score with respect to all X-ray entries followed by that with respect to entries of similar resolution.

The Analysed column shows the number of residues for which the sidechain conformation was analysed, and the total number of residues.

Mol	Chain	Analysed	Rotameric	Outliers	Percentiles
1	A	471/494 (95%)	449 (95%)	22 (5%)	32 67

5 of 22 residues with a non-rotameric sidechain are listed below:

Mol	Chain	Res	Type
1	A	377	PRO
1	A	390	LEU
1	A	599	LYS
1	A	379	LYS
1	A	388	ARG

Some sidechains can be flipped to improve hydrogen bonding and reduce clashes. 5 of 20 such sidechains are listed below:

Mol	Chain	Res	Type
1	A	465	ASN
1	A	476	HIS
1	A	571	HIS
1	A	279	GLN
1	A	304	GLN

### 5.3.3 RNA ⓘ

There are no RNA molecules in this entry.

## 5.4 Non-standard residues in protein, DNA, RNA chains ⓘ

There are no non-standard protein/DNA/RNA residues in this entry.

## 5.5 Carbohydrates ⓘ

2 carbohydrates are modelled in this entry.

In the following table, the Counts columns list the number of bonds (or angles) for which Mogul statistics could be retrieved, the number of bonds (or angles) that are observed in the model and the number of bonds (or angles) that are defined in the chemical component dictionary. The Link column lists molecule types, if any, to which the group is linked. The Z score for a bond length (or angle) is the number of standard deviations the observed value is removed from the expected value. A bond length (or angle) with  $|Z| > 2$  is considered an outlier worth inspection. RMSZ is the root-mean-square of all Z scores of the bond lengths (or angles).

Mol	Type	Chain	Res	Link	Bond lengths			Bond angles		
					Counts	RMSZ	# Z  > 2	Counts	RMSZ	# Z  > 2
2	NAG	A	700	1,2	14,14,15	0.79	1 (7%)	15,19,21	1.17	1 (6%)
2	NAG	A	703	2	14,14,15	0.68	0	15,19,21	0.69	1 (6%)

In the following table, the Chirals column lists the number of chiral outliers, the number of chiral centers analysed, the number of these observed in the model and the number defined in the chemical component dictionary. Similar counts are reported in the Torsion and Rings columns. '-' means no outliers of that kind were identified.

Mol	Type	Chain	Res	Link	Chirals	Torsions	Rings
2	NAG	A	700	1,2	-	0/6/23/26	0/1/1/1
2	NAG	A	703	2	-	0/6/23/26	0/1/1/1

All (1) bond length outliers are listed below:

Mol	Chain	Res	Type	Atoms	Z	Observed(Å)	Ideal(Å)
2	A	700	NAG	C1-C2	2.30	1.55	1.52

All (2) bond angle outliers are listed below:

Mol	Chain	Res	Type	Atoms	Z	Observed(°)	Ideal(°)
2	A	700	NAG	C2-N2-C7	-2.73	119.53	123.04
2	A	703	NAG	C2-N2-C7	-2.09	120.36	123.04

There are no chirality outliers.

There are no torsion outliers.

There are no ring outliers.

1 monomer is involved in 1 short contact:

Mol	Chain	Res	Type	Clashes	Symm-Clashes
2	A	703	NAG	1	0

## 5.6 Ligand geometry ⓘ

Of 6 ligands modelled in this entry, 1 is monoatomic - leaving 5 for Mogul analysis.

In the following table, the Counts columns list the number of bonds (or angles) for which Mogul statistics could be retrieved, the number of bonds (or angles) that are observed in the model and the number of bonds (or angles) that are defined in the chemical component dictionary. The Link column lists molecule types, if any, to which the group is linked. The Z score for a bond length (or angle) is the number of standard deviations the observed value is removed from the expected

value. A bond length (or angle) with  $|Z| > 2$  is considered an outlier worth inspection. RMSZ is the root-mean-square of all Z scores of the bond lengths (or angles).

Mol	Type	Chain	Res	Link	Bond lengths			Bond angles		
					Counts	RMSZ	$\# Z  > 2$	Counts	RMSZ	$\# Z  > 2$
3	NAG	A	701	1	14,14,15	0.61	0	15,19,21	0.82	0
4	NGA	A	702	-	15,15,15	0.57	0	17,21,21	0.73	0
3	NAG	A	704	1	14,14,15	0.73	1 (7%)	15,19,21	0.72	1 (6%)
7	UDP	A	705	5	18,26,26	1.19	1 (5%)	26,40,40	1.61	3 (11%)
6	TNR	A	707	-	18,21,21	0.96	1 (5%)	22,29,29	1.02	2 (9%)

In the following table, the Chirals column lists the number of chiral outliers, the number of chiral centers analysed, the number of these observed in the model and the number defined in the chemical component dictionary. Similar counts are reported in the Torsion and Rings columns. '-' means no outliers of that kind were identified.

Mol	Type	Chain	Res	Link	Chirals	Torsions	Rings
3	NAG	A	701	1	-	0/6/23/26	0/1/1/1
4	NGA	A	702	-	-	0/6/26/26	0/1/1/1
3	NAG	A	704	1	-	0/6/23/26	0/1/1/1
7	UDP	A	705	5	-	0/12/32/32	0/2/2/2
6	TNR	A	707	-	-	0/11/35/35	0/1/1/1

All (3) bond length outliers are listed below:

Mol	Chain	Res	Type	Atoms	Z	Observed(Å)	Ideal(Å)
3	A	704	NAG	C1-C2	2.07	1.55	1.52
6	A	707	TNR	O1-C1	2.54	1.44	1.40
7	A	705	UDP	C4-N3	2.80	1.38	1.33

The worst 5 of 6 bond angle outliers are listed below:

Mol	Chain	Res	Type	Atoms	Z	Observed(°)	Ideal(°)
7	A	705	UDP	PA-O3A-PB	-2.72	123.56	132.67
3	A	704	NAG	C2-N2-C7	-2.15	120.28	123.04
7	A	705	UDP	C4'-O4'-C1'	2.08	112.01	109.72
6	A	707	TNR	O1-C1-C2	2.10	110.37	107.57
6	A	707	TNR	CB-O1-C1	2.29	118.62	113.82

There are no chirality outliers.

There are no torsion outliers.

There are no ring outliers.

2 monomers are involved in 3 short contacts:

Mol	Chain	Res	Type	Clashes	Symm-Clashes
4	A	702	NGA	2	0
3	A	704	NAG	1	0

## 5.7 Other polymers [i](#)

There are no such residues in this entry.

## 5.8 Polymer linkage issues [i](#)

There are no chain breaks in this entry.

## 6 Fit of model and data [i](#)

### 6.1 Protein, DNA and RNA chains [i](#)

In the following table, the column labelled ‘#RSRZ> 2’ contains the number (and percentage) of RSRZ outliers, followed by percent RSRZ outliers for the chain as percentile scores relative to all X-ray entries and entries of similar resolution. The OWAB column contains the minimum, median, 95<sup>th</sup> percentile and maximum values of the occupancy-weighted average B-factor per residue. The column labelled ‘Q< 0.9’ lists the number of (and percentage) of residues with an average occupancy less than 0.9.

Mol	Chain	Analysed	<RSRZ>	#RSRZ>2	OWAB(Å <sup>2</sup> )	Q<0.9
1	A	536/570 (94%)	0.01	21 (3%) 43 31	22, 47, 98, 108	0

The worst 5 of 21 RSRZ outliers are listed below:

Mol	Chain	Res	Type	RSRZ
1	A	570	ASP	3.8
1	A	603	ASN	3.7
1	A	540	SER	3.6
1	A	581	SER	3.5
1	A	479	LEU	3.4

### 6.2 Non-standard residues in protein, DNA, RNA chains [i](#)

There are no non-standard protein/DNA/RNA residues in this entry.

### 6.3 Carbohydrates [i](#)

In the following table, the Atoms column lists the number of modelled atoms in the group and the number defined in the chemical component dictionary. LLDF column lists the quality of electron density of the group with respect to its neighbouring residues in protein, DNA or RNA chains. The B-factors column lists the minimum, median, 95<sup>th</sup> percentile and maximum values of B factors of atoms in the group. The column labelled ‘Q< 0.9’ lists the number of atoms with occupancy less than 0.9.

Mol	Type	Chain	Res	Atoms	RSCC	RSR	LLDF	B-factors(Å <sup>2</sup> )	Q<0.9
2	NAG	A	700	14/15	0.91	0.16	0.32	53,56,61,66	0
2	NAG	A	703	14/15	0.75	0.40	-	65,69,72,74	0

## 6.4 Ligands [i](#)

In the following table, the Atoms column lists the number of modelled atoms in the group and the number defined in the chemical component dictionary. LLDF column lists the quality of electron density of the group with respect to its neighbouring residues in protein, DNA or RNA chains. The B-factors column lists the minimum, median, 95<sup>th</sup> percentile and maximum values of B factors of atoms in the group. The column labelled 'Q< 0.9' lists the number of atoms with occupancy less than 0.9.

Mol	Type	Chain	Res	Atoms	RSCC	RSR	LLDF	B-factors(Å <sup>2</sup> )	Q<0.9
3	NAG	A	704	14/15	0.75	0.41	8.98	76,79,80,80	0
7	UDP	A	705	25/25	0.97	0.28	1.89	49,53,57,59	0
6	TNR	A	707	21/21	0.79	0.30	1.33	102,104,105,105	0
4	NGA	A	702	15/15	0.96	0.26	1.20	43,45,47,50	0
3	NAG	A	701	14/15	0.86	0.22	-0.55	74,77,78,79	0
5	MN	A	706	1/1	0.99	0.16	-	24,24,24,24	0

## 6.5 Other polymers [i](#)

There are no such residues in this entry.