



Full wwPDB X-ray Structure Validation Report ⓘ

Jan 31, 2016 – 06:59 PM GMT

PDB ID : 1DIQ
Title : CRYSTAL STRUCTURE OF P-CRESOL METHYLHYDROXYLASE WITH
SUBSTRATE BOUND
Authors : Cunane, L.M.; Chen, Z.W.; Shamala, N.; Mathews, F.S.; Cronin, C.S.; McIn-
tire, W.S.
Deposited on : 1999-11-29
Resolution : 2.75 Å(reported)

This is a Full wwPDB X-ray Structure Validation Report for a publicly released PDB entry.
We welcome your comments at validation@mail.wwpdb.org
A user guide is available at
<http://wwpdb.org/validation/2016/XrayValidationReportHelp>
with specific help available everywhere you see the ⓘ symbol.

The following versions of software and data (see [references ⓘ](#)) were used in the production of this report:

MolProbity : 4.02b-467
Mogul : 1.7 (RC4), CSD as536be (2015)
Xtriage (Phenix) : 1.9-1692
EDS : rb-20026688
Percentile statistics : 20151230.v01 (using entries in the PDB archive December 30th 2015)
Refmac : 5.8.0135
CCP4 : 6.5.0
Ideal geometry (proteins) : Engh & Huber (2001)
Ideal geometry (DNA, RNA) : Parkinson et al. (1996)
Validation Pipeline (wwPDB-VP) : trunk26865

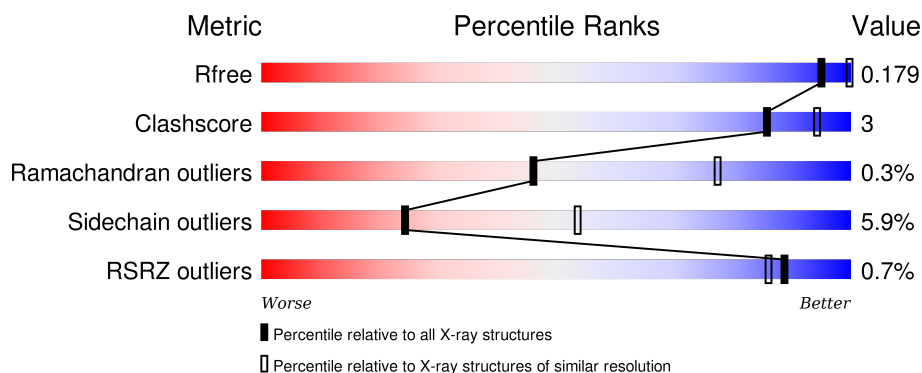
1 Overall quality at a glance

The following experimental techniques were used to determine the structure:

X-RAY DIFFRACTION

The reported resolution of this entry is 2.75 Å.

Percentile scores (ranging between 0-100) for global validation metrics of the entry are shown in the following graphic. The table shows the number of entries on which the scores are based.



Metric	Whole archive (#Entries)	Similar resolution (#Entries, resolution range(Å))
R_{free}	91344	3340 (2.80-2.72)
Clashscore	102246	3829 (2.80-2.72)
Ramachandran outliers	100387	3767 (2.80-2.72)
Sidechain outliers	100360	3770 (2.80-2.72)
RSRZ outliers	91569	3352 (2.80-2.72)

The table below summarises the geometric issues observed across the polymeric chains and their fit to the electron density. The red, orange, yellow and green segments on the lower bar indicate the fraction of residues that contain outliers for ≥ 3 , 2, 1 and 0 types of geometric quality criteria. A grey segment represents the fraction of residues that are not modelled. The numeric value for each fraction is indicated below the corresponding segment, with a dot representing fractions $\leq 5\%$. The upper red bar (where present) indicates the fraction of residues that have poor fit to the electron density. The numeric value is given above the bar.

Mol	Chain	Length	Quality of chain
1	A	521	<div> <div>%</div> <div> <div></div> <div>86%</div> <div>11%</div> <div>..</div> </div> </div>
1	B	521	<div> <div></div> <div>87%</div> <div>11%</div> <div>..</div> </div>
2	C	80	<div> <div></div> <div>89%</div> <div>•</div> <div>8%</div> </div>
2	D	80	<div> <div>%</div> <div> <div></div> <div>89%</div> <div>•</div> <div>8%</div> </div> </div>

The following table lists non-polymeric compounds, carbohydrate monomers and non-standard

residues in protein, DNA, RNA chains that are outliers for geometric or electron-density-fit criteria:

Mol	Type	Chain	Res	Chirality	Geometry	Clashes	Electron density
4	FAD	A	599	X	-	-	-
4	FAD	B	599	X	-	-	-
5	PCR	B	799	-	-	-	X

2 Entry composition

There are 7 unique types of molecules in this entry. The entry contains 9730 atoms, of which 0 are hydrogens and 0 are deuteriums.

In the tables below, the ZeroOcc column contains the number of atoms modelled with zero occupancy, the AltConf column contains the number of residues with at least one atom in alternate conformation and the Trace column contains the number of residues modelled with at most 2 atoms.

- Molecule 1 is a protein called P-CRESOL METHYLHYDROXYLASE.

Mol	Chain	Residues	Atoms					ZeroOcc	AltConf	Trace
1	A	515	Total	C	N	O	S	0	0	0
			4025	2562	688	748	27			
1	B	515	Total	C	N	O	S	0	0	0
			4025	2562	688	748	27			

- Molecule 2 is a protein called P-CRESOL METHYLHYDROXYLASE.

Mol	Chain	Residues	Atoms					ZeroOcc	AltConf	Trace
2	C	74	Total	C	N	O	S	0	0	0
			564	358	96	107	3			
2	D	74	Total	C	N	O	S	0	0	0
			564	358	96	107	3			

- Molecule 3 is CHLORIDE ION (three-letter code: CL) (formula: Cl).

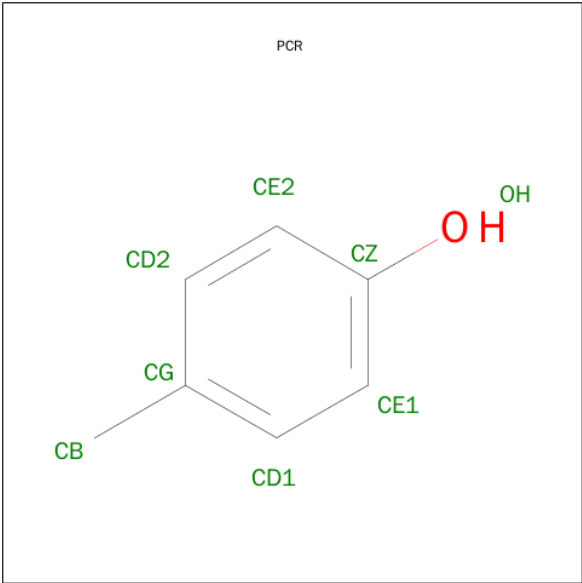
Mol	Chain	Residues	Atoms		ZeroOcc	AltConf
3	B	1	Total	Cl	0	0
			1	1		
3	A	1	Total	Cl	0	0
			1	1		

- Molecule 4 is FLAVIN-ADENINE DINUCLEOTIDE (three-letter code: FAD) (formula: C₂₇H₃₃N₉O₁₅P₂).



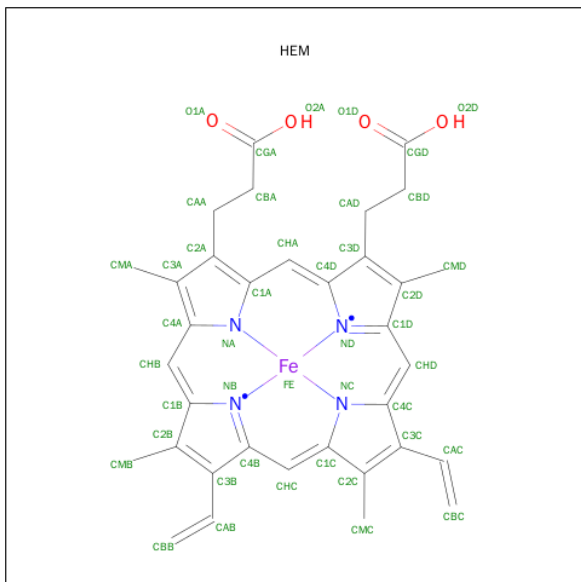
Mol	Chain	Residues	Atoms					ZeroOcc	AltConf
4	A	1	Total 53	C 27	N 9	O 15	P 2	0	0
4	B	1	Total 53	C 27	N 9	O 15	P 2	0	0

- Molecule 5 is P-CRESOL (three-letter code: PCR) (formula: C₇H₈O).



Mol	Chain	Residues	Atoms			ZeroOcc	AltConf
5	A	1	Total	C	O	0	0
			8	7	1		
5	B	1	Total	C	O	0	0
			8	7	1		

- Molecule 6 is PROTOPORPHYRIN IX CONTAINING FE (three-letter code: HEM) (formula: $C_{34}H_{32}FeN_4O_4$).



Mol	Chain	Residues	Atoms					ZeroOcc	AltConf
6	C	1	Total 43	C 34	Fe 1	N 4	O 4	0	0
6	D	1	Total 43	C 34	Fe 1	N 4	O 4	0	0

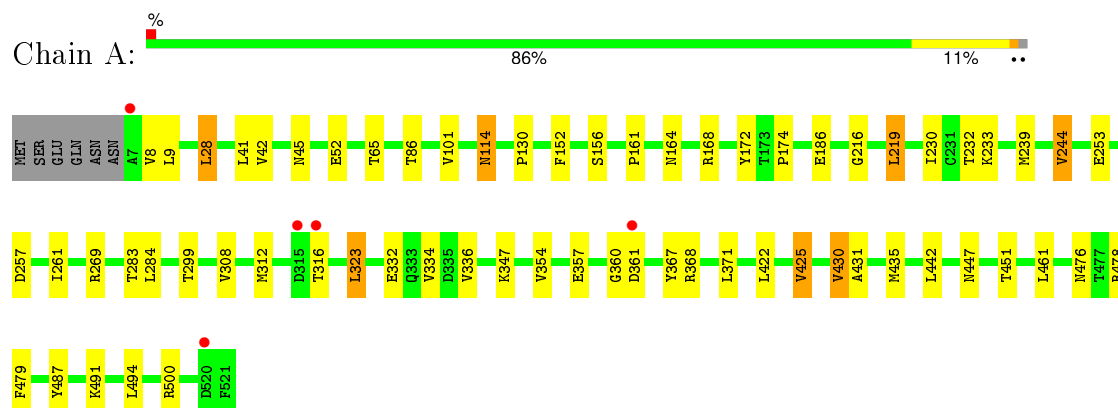
- Molecule 7 is water.

Mol	Chain	Residues	Atoms	ZeroOcc	AltConf
7	A	157	Total O 157 157	0	0
7	B	153	Total O 153 153	0	0
7	C	19	Total O 19 19	0	0
7	D	13	Total O 13 13	0	0

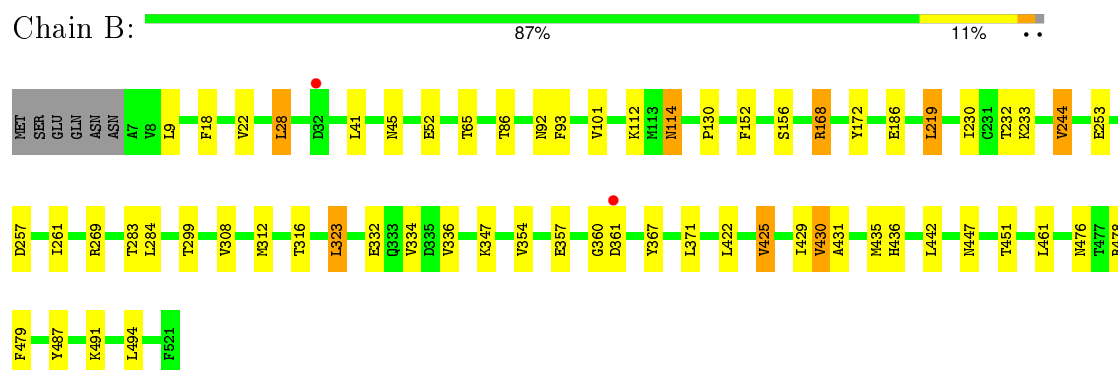
3 Residue-property plots [i](#)

These plots are drawn for all protein, RNA and DNA chains in the entry. The first graphic for a chain summarises the proportions of errors displayed in the second graphic. The second graphic shows the sequence view annotated by issues in geometry and electron density. Residues are color-coded according to the number of geometric quality criteria for which they contain at least one outlier: green = 0, yellow = 1, orange = 2 and red = 3 or more. A red dot above a residue indicates a poor fit to the electron density ($RSRZ > 2$). Stretches of 2 or more consecutive residues without any outlier are shown as a green connector. Residues present in the sample, but not in the model, are shown in grey.

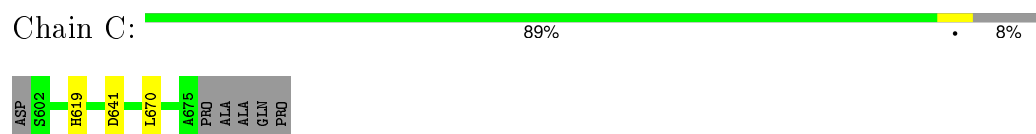
- Molecule 1: P-CRESOL METHYLHYDROXYLASE



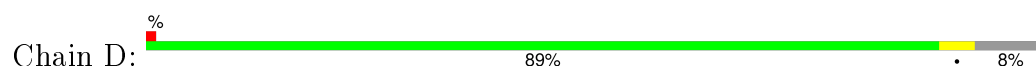
- Molecule 1: P-CRESOL METHYLHYDROXYLASE

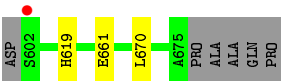


- Molecule 2: P-CRESOL METHYLHYDROXYLASE



- Molecule 2: P-CRESOL METHYLHYDROXYLASE





4 Data and refinement statistics

Property	Value	Source
Space group	P 21 21 21	Depositor
Cell constants a, b, c, α , β , γ	139.10 Å 130.50 Å 74.40 Å 90.00° 90.00° 90.00°	Depositor
Resolution (Å)	25.00 – 2.75 6.00 – 2.75	Depositor EDS
% Data completeness (in resolution range)	80.5 (25.00-2.75) 90.0 (6.00-2.75)	Depositor EDS
R_{merge}	0.04	Depositor
R_{sym}	(Not available)	Depositor
$\langle I/\sigma(I) \rangle$ ¹	7.49 (at 2.73 Å)	Xtriage
Refinement program	CNS	Depositor
R, R_{free}	0.133 , 0.183 0.132 , 0.179	Depositor DCC
R_{free} test set	2913 reflections (11.18%)	DCC
Wilson B-factor (Å ²)	41.0	Xtriage
Anisotropy	0.415	Xtriage
Bulk solvent k_{sol} (e/Å ³), B_{sol} (Å ²)	0.38 , 59.7	EDS
Estimated twinning fraction	No twinning to report.	Xtriage
L-test for twinning ²	$\langle L \rangle = 0.49$, $\langle L^2 \rangle = 0.32$	Xtriage
Outliers	0 of 28960 reflections	Xtriage
F_o, F_c correlation	0.97	EDS
Total number of atoms	9730	wwPDB-VP
Average B, all atoms (Å ²)	41.0	wwPDB-VP

Xtriage's analysis on translational NCS is as follows: *The largest off-origin peak in the Patterson function is 6.77% of the height of the origin peak. No significant pseudotranslation is detected.*

¹Intensities estimated from amplitudes.

²Theoretical values of $\langle |L| \rangle$, $\langle L^2 \rangle$ for acentric reflections are 0.5, 0.375 respectively for untwinned datasets, and 0.333, 0.2 for perfectly twinned datasets.

5 Model quality ⓘ

5.1 Standard geometry ⓘ

Bond lengths and bond angles in the following residue types are not validated in this section: PCR, HEM, FAD, CL

The Z score for a bond length (or angle) is the number of standard deviations the observed value is removed from the expected value. A bond length (or angle) with $|Z| > 5$ is considered an outlier worth inspection. RMSZ is the root-mean-square of all Z scores of the bond lengths (or angles).

Mol	Chain	Bond lengths		Bond angles	
		RMSZ	# Z >5	RMSZ	# Z >5
1	A	0.73	0/4123	0.82	6/5593 (0.1%)
1	B	0.73	0/4123	0.82	6/5593 (0.1%)
2	C	0.73	0/579	0.84	1/786 (0.1%)
2	D	0.72	0/579	0.85	1/786 (0.1%)
All	All	0.73	0/9404	0.82	14/12758 (0.1%)

Chiral center outliers are detected by calculating the chiral volume of a chiral center and verifying if the center is modelled as a planar moiety or with the opposite hand. A planarity outlier is detected by checking planarity of atoms in a peptide group, atoms in a mainchain group or atoms of a sidechain that are expected to be planar.

Mol	Chain	#Chirality outliers	#Planarity outliers
1	A	0	1
1	B	0	1
All	All	0	2

There are no bond length outliers.

All (14) bond angle outliers are listed below:

Mol	Chain	Res	Type	Atoms	Z	Observed(°)	Ideal(°)
1	B	323	LEU	CA-CB-CG	8.33	134.45	115.30
1	A	323	LEU	CA-CB-CG	8.22	134.21	115.30
2	D	619	HIS	ND1-CG-CD2	7.89	119.85	108.80
2	C	619	HIS	ND1-CG-CD2	7.85	119.79	108.80
1	A	28	LEU	CA-CB-CG	6.66	130.61	115.30
1	B	28	LEU	CA-CB-CG	6.60	130.47	115.30
1	A	219	LEU	N-CA-C	5.29	125.28	111.00
1	B	9	LEU	CA-CB-CG	5.25	127.39	115.30
1	B	219	LEU	N-CA-C	5.19	125.00	111.00
1	A	168	ARG	NE-CZ-NH2	-5.15	117.72	120.30

Continued on next page...

Continued from previous page...

Mol	Chain	Res	Type	Atoms	Z	Observed(°)	Ideal(°)
1	B	436	HIS	N-CA-C	-5.13	97.14	111.00
1	A	168	ARG	NE-CZ-NH1	5.11	122.85	120.30
1	A	9	LEU	CA-CB-CG	5.07	126.96	115.30
1	B	168	ARG	NE-CZ-NH2	-5.01	117.80	120.30

There are no chirality outliers.

All (2) planarity outliers are listed below:

Mol	Chain	Res	Type	Group
1	A	172	TYR	Sidechain
1	B	172	TYR	Sidechain

5.2 Too-close contacts

In the following table, the Non-H and H(model) columns list the number of non-hydrogen atoms and hydrogen atoms in the chain respectively. The H(added) column lists the number of hydrogen atoms added and optimized by MolProbity. The Clashes column lists the number of clashes within the asymmetric unit, whereas Symm-Clashes lists symmetry related clashes.

Mol	Chain	Non-H	H(model)	H(added)	Clashes	Symm-Clashes
1	A	4025	0	3959	26	0
1	B	4025	0	3959	23	0
2	C	564	0	543	1	0
2	D	564	0	543	1	0
3	A	1	0	0	0	0
3	B	1	0	0	0	0
4	A	53	0	29	2	0
4	B	53	0	30	3	0
5	A	8	0	8	0	0
5	B	8	0	8	1	0
6	C	43	0	30	0	0
6	D	43	0	30	0	0
7	A	157	0	0	4	0
7	B	153	0	0	2	0
7	C	19	0	0	1	0
7	D	13	0	0	1	0
All	All	9730	0	9139	51	0

The all-atom clashscore is defined as the number of clashes found per 1000 atoms (including hydrogen atoms). The all-atom clashscore for this structure is 3.

All (51) close contacts within the same asymmetric unit are listed below, sorted by their clash

magnitude.

Atom-1	Atom-2	Interatomic distance (Å)	Clash overlap (Å)
1:B:312:MET:O	1:B:316:THR:HG22	1.81	0.81
1:A:312:MET:O	1:A:316:THR:HG22	1.80	0.81
1:A:114:ASN:HD22	1:A:114:ASN:H	1.36	0.74
1:B:114:ASN:HD22	1:B:114:ASN:H	1.34	0.72
1:B:476:ASN:HD21	1:B:479:PHE:HD2	1.44	0.65
1:A:476:ASN:HD21	1:A:479:PHE:HD2	1.46	0.62
1:B:93:PHE:HB2	4:B:599:FAD:HM81	1.89	0.55
1:A:368:ARG:NH2	7:A:816:HOH:O	2.43	0.52
2:D:661:GLU:HB2	7:D:234:HOH:O	2.10	0.51
1:B:92:ASN:HA	4:B:599:FAD:H5'2	1.92	0.50
1:A:86:THR:HG21	1:A:230:ILE:HG23	1.92	0.50
1:A:130:PRO:HD3	1:A:232:THR:O	2.12	0.49
1:A:174:PRO:HD2	1:A:239:MET:SD	2.53	0.49
1:B:86:THR:HG21	1:B:230:ILE:HG23	1.93	0.49
1:A:244:VAL:HG22	1:A:334:VAL:HG21	1.93	0.49
1:A:425:VAL:HG11	1:A:442:LEU:HD12	1.95	0.49
1:B:487:TYR:HB3	1:B:491:LYS:HD3	1.95	0.48
1:A:476:ASN:HD22	1:A:478:ARG:H	1.62	0.48
4:B:599:FAD:O3'	4:B:599:FAD:N1	2.34	0.48
1:B:244:VAL:HG22	1:B:334:VAL:HG21	1.95	0.48
1:B:257:ASP:O	1:B:261:ILE:HG13	2.14	0.47
1:A:487:TYR:HB3	1:A:491:LYS:HD3	1.95	0.47
1:A:186:GLU:HB3	1:A:233:LYS:HB2	1.96	0.47
1:A:216:GLY:O	1:B:168:ARG:NH2	2.28	0.47
1:B:425:VAL:HG11	1:B:442:LEU:HD12	1.97	0.46
1:B:186:GLU:HB3	1:B:233:LYS:HB2	1.97	0.46
1:A:161:PRO:HD2	7:A:889:HOH:O	2.15	0.46
1:B:130:PRO:HD3	1:B:232:THR:O	2.16	0.46
1:A:114:ASN:N	1:A:114:ASN:HD22	2.06	0.45
1:B:476:ASN:HD22	1:B:478:ARG:H	1.64	0.45
1:B:269:ARG:HH21	1:B:431:ALA:HA	1.82	0.45
1:B:476:ASN:ND2	1:B:478:ARG:HB3	2.32	0.45
1:B:430:VAL:HB	1:B:435:MET:SD	2.57	0.45
1:A:8:VAL:HG11	7:A:940:HOH:O	2.16	0.45
2:C:641:ASP:HB3	7:C:193:HOH:O	2.16	0.44
1:A:269:ARG:HH21	1:A:431:ALA:HA	1.82	0.44
1:B:112:LYS:HB2	7:B:899:HOH:O	2.18	0.44
1:A:491:LYS:HE3	7:B:901:HOH:O	2.17	0.44
1:B:447:ASN:O	1:B:451:THR:HG23	2.18	0.44
1:A:164:ASN:HD22	4:A:599:FAD:H4'	1.83	0.43
4:A:599:FAD:N1	4:A:599:FAD:O3'	2.36	0.43

Continued on next page...

Continued from previous page...

Atom-1	Atom-2	Interatomic distance (Å)	Clash overlap (Å)
1:A:336:VAL:HG11	1:B:336:VAL:HG11	1.99	0.43
1:A:476:ASN:ND2	1:A:478:ARG:HB3	2.33	0.43
1:A:430:VAL:HB	1:A:435:MET:SD	2.59	0.42
1:A:257:ASP:O	1:A:261:ILE:HG13	2.20	0.42
1:A:447:ASN:O	1:A:451:THR:HG23	2.19	0.42
1:B:429:ILE:HD11	5:B:799:PCR:HD11	2.02	0.41
1:A:332:GLU:O	1:A:336:VAL:HG13	2.20	0.41
1:B:332:GLU:O	1:B:336:VAL:HG13	2.20	0.41
1:A:500:ARG:HD3	7:A:905:HOH:O	2.20	0.41
1:B:18:PHE:O	1:B:22:VAL:HG23	2.21	0.40

There are no symmetry-related clashes.

5.3 Torsion angles

5.3.1 Protein backbone

In the following table, the Percentiles column shows the percent Ramachandran outliers of the chain as a percentile score with respect to all X-ray entries followed by that with respect to entries of similar resolution.

The Analysed column shows the number of residues for which the backbone conformation was analysed, and the total number of residues.

Mol	Chain	Analysed	Favoured	Allowed	Outliers	Percentiles	
1	A	513/521 (98%)	498 (97%)	13 (2%)	2 (0%)	39	72
1	B	513/521 (98%)	499 (97%)	12 (2%)	2 (0%)	39	72
2	C	72/80 (90%)	69 (96%)	3 (4%)	0	100	100
2	D	72/80 (90%)	69 (96%)	3 (4%)	0	100	100
All	All	1170/1202 (97%)	1135 (97%)	31 (3%)	4 (0%)	46	77

All (4) Ramachandran outliers are listed below:

Mol	Chain	Res	Type
1	A	156	SER
1	B	156	SER
1	A	360	GLY
1	B	360	GLY

5.3.2 Protein sidechains ⓘ

In the following table, the Percentiles column shows the percent sidechain outliers of the chain as a percentile score with respect to all X-ray entries followed by that with respect to entries of similar resolution.

The Analysed column shows the number of residues for which the sidechain conformation was analysed, and the total number of residues.

Mol	Chain	Analysed	Rotameric	Outliers	Percentiles	
1	A	427/433 (99%)	399 (93%)	28 (7%)	21	48
1	B	427/433 (99%)	400 (94%)	27 (6%)	22	50
2	C	60/64 (94%)	59 (98%)	1 (2%)	68	90
2	D	60/64 (94%)	59 (98%)	1 (2%)	68	90
All	All	974/994 (98%)	917 (94%)	57 (6%)	24	53

All (57) residues with a non-rotameric sidechain are listed below:

Mol	Chain	Res	Type
1	A	28	LEU
1	A	41	LEU
1	A	42	VAL
1	A	45	ASN
1	A	52	GLU
1	A	65	THR
1	A	101	VAL
1	A	114	ASN
1	A	152	PHE
1	A	219	LEU
1	A	244	VAL
1	A	253	GLU
1	A	283	THR
1	A	284	LEU
1	A	299	THR
1	A	308	VAL
1	A	323	LEU
1	A	347	LYS
1	A	354	VAL
1	A	357	GLU
1	A	361	ASP
1	A	367	TYR
1	A	371	LEU
1	A	422	LEU

Continued on next page...

Continued from previous page...

Mol	Chain	Res	Type
1	A	425	VAL
1	A	430	VAL
1	A	461	LEU
1	A	494	LEU
2	C	670	LEU
1	B	28	LEU
1	B	41	LEU
1	B	45	ASN
1	B	52	GLU
1	B	65	THR
1	B	101	VAL
1	B	114	ASN
1	B	152	PHE
1	B	219	LEU
1	B	244	VAL
1	B	253	GLU
1	B	283	THR
1	B	284	LEU
1	B	299	THR
1	B	308	VAL
1	B	323	LEU
1	B	347	LYS
1	B	354	VAL
1	B	357	GLU
1	B	361	ASP
1	B	367	TYR
1	B	371	LEU
1	B	422	LEU
1	B	425	VAL
1	B	430	VAL
1	B	461	LEU
1	B	494	LEU
2	D	670	LEU

Some sidechains can be flipped to improve hydrogen bonding and reduce clashes. All (12) such sidechains are listed below:

Mol	Chain	Res	Type
1	A	15	GLN
1	A	19	ASN
1	A	40	GLN
1	A	114	ASN
1	A	476	ASN

Continued on next page...

Continued from previous page...

Mol	Chain	Res	Type
1	A	519	ASN
1	B	15	GLN
1	B	19	ASN
1	B	40	GLN
1	B	114	ASN
1	B	476	ASN
1	B	519	ASN

5.3.3 RNA ⓘ

There are no RNA molecules in this entry.

5.4 Non-standard residues in protein, DNA, RNA chains ⓘ

There are no non-standard protein/DNA/RNA residues in this entry.

5.5 Carbohydrates ⓘ

There are no carbohydrates in this entry.

5.6 Ligand geometry ⓘ

Of 8 ligands modelled in this entry, 2 are monoatomic - leaving 6 for Mogul analysis.

In the following table, the Counts columns list the number of bonds (or angles) for which Mogul statistics could be retrieved, the number of bonds (or angles) that are observed in the model and the number of bonds (or angles) that are defined in the chemical component dictionary. The Link column lists molecule types, if any, to which the group is linked. The Z score for a bond length (or angle) is the number of standard deviations the observed value is removed from the expected value. A bond length (or angle) with $|Z| > 2$ is considered an outlier worth inspection. RMSZ is the root-mean-square of all Z scores of the bond lengths (or angles).

Mol	Type	Chain	Res	Link	Bond lengths			Bond angles		
					Counts	RMSZ	$\# Z > 2$	Counts	RMSZ	$\# Z > 2$
4	FAD	A	599	1	48,58,58	2.00	14 (29%)	54,89,89	3.20	17 (31%)
5	PCR	A	798	-	8,8,8	1.87	2 (25%)	10,10,10	0.31	0
4	FAD	B	599	1	48,58,58	2.04	12 (25%)	54,89,89	3.08	16 (29%)
5	PCR	B	799	-	8,8,8	1.67	2 (25%)	10,10,10	0.21	0
6	HEM	C	699	2	30,50,50	2.72	7 (23%)	24,82,82	3.04	10 (41%)
6	HEM	D	699	2	30,50,50	2.63	9 (30%)	24,82,82	2.96	10 (41%)

In the following table, the Chirals column lists the number of chiral outliers, the number of chiral centers analysed, the number of these observed in the model and the number defined in the chemical component dictionary. Similar counts are reported in the Torsion and Rings columns. '-' means no outliers of that kind were identified.

Mol	Type	Chain	Res	Link	Chirals	Torsions	Rings
4	FAD	A	599	1	3/3/9/9	0/30/50/50	0/6/6/6
5	PCR	A	798	-	-	0/0/0/0	0/1/1/1
4	FAD	B	599	1	3/3/9/9	0/30/50/50	0/6/6/6
5	PCR	B	799	-	-	0/0/0/0	0/1/1/1
6	HEM	C	699	2	-	0/10/54/54	0/0/8/8
6	HEM	D	699	2	-	0/10/54/54	0/0/8/8

All (46) bond length outliers are listed below:

Mol	Chain	Res	Type	Atoms	Z	Observed(Å)	Ideal(Å)
6	C	699	HEM	C3B-C4B	-8.72	1.44	1.51
6	D	699	HEM	C3B-C4B	-8.12	1.44	1.51
6	D	699	HEM	C2D-C3D	-6.46	1.35	1.54
6	C	699	HEM	C2D-C3D	-6.18	1.36	1.54
6	D	699	HEM	C3D-C4D	-5.17	1.44	1.51
6	C	699	HEM	C3D-C4D	-5.16	1.45	1.51
4	B	599	FAD	C8A-N7A	-4.60	1.25	1.34
4	A	599	FAD	C8A-N7A	-4.05	1.26	1.34
6	C	699	HEM	C2C-C1C	-3.46	1.46	1.52
4	A	599	FAD	C8M-C8	-3.29	1.44	1.51
6	D	699	HEM	C2C-C1C	-3.01	1.46	1.52
4	A	599	FAD	C5'-C4'	-2.51	1.47	1.51
4	A	599	FAD	O5'-C5'	-2.38	1.35	1.44
4	B	599	FAD	O5'-C5'	-2.36	1.35	1.44
6	D	699	HEM	C2D-C1D	-2.29	1.44	1.51
4	A	599	FAD	P-O2P	-2.28	1.45	1.54
4	B	599	FAD	C8M-C8	-2.27	1.46	1.51
4	A	599	FAD	C2B-C3B	-2.20	1.47	1.53
4	B	599	FAD	P-O2P	-2.10	1.46	1.54
6	D	699	HEM	CAA-C2A	2.03	1.55	1.52
4	B	599	FAD	C6-C5X	2.04	1.44	1.41
4	A	599	FAD	C5X-N5	2.13	1.38	1.35
6	D	699	HEM	C4C-NC	2.15	1.38	1.36
4	B	599	FAD	C2A-N3A	2.23	1.36	1.32
4	A	599	FAD	C4A-N3A	2.46	1.39	1.35
5	B	799	PCR	CE1-CD1	2.66	1.43	1.38
6	C	699	HEM	C1C-NC	2.68	1.39	1.36
4	A	599	FAD	C2A-N3A	2.79	1.37	1.32

Continued on next page...

Continued from previous page...

Mol	Chain	Res	Type	Atoms	Z	Observed(Å)	Ideal(Å)
5	B	799	PCR	CE2-CD2	2.81	1.43	1.38
4	B	599	FAD	C5X-N5	2.95	1.40	1.35
5	A	798	PCR	CE1-CD1	2.97	1.44	1.38
5	A	798	PCR	CE2-CD2	3.21	1.44	1.38
4	A	599	FAD	O4B-C1B	3.71	1.45	1.41
4	A	599	FAD	C4-N3	4.02	1.40	1.33
4	B	599	FAD	C4X-N5	4.03	1.39	1.33
6	D	699	HEM	CBC-CAC	4.11	1.53	1.29
6	D	699	HEM	CBB-CAB	4.17	1.53	1.29
6	C	699	HEM	CBC-CAC	4.19	1.53	1.29
6	C	699	HEM	CBB-CAB	4.21	1.53	1.29
4	A	599	FAD	C4X-N5	4.30	1.40	1.33
4	B	599	FAD	C4-N3	4.48	1.41	1.33
4	B	599	FAD	C9A-N10	4.59	1.45	1.38
4	A	599	FAD	C9A-N10	4.78	1.45	1.38
4	B	599	FAD	O4B-C1B	4.78	1.47	1.41
4	A	599	FAD	C10-N10	4.81	1.44	1.39
4	B	599	FAD	C10-N10	5.47	1.45	1.39

All (53) bond angle outliers are listed below:

Mol	Chain	Res	Type	Atoms	Z	Observed(°)	Ideal(°)
4	A	599	FAD	C4-C4X-C10	-7.38	115.22	119.94
4	B	599	FAD	C4-C4X-C10	-7.15	115.36	119.94
6	C	699	HEM	C3B-CAB-CBB	-6.96	113.78	124.46
6	D	699	HEM	C3B-CAB-CBB	-6.86	113.94	124.46
4	A	599	FAD	C4X-C10-N10	-6.83	116.50	120.52
4	B	599	FAD	C4X-C10-N10	-6.36	116.77	120.52
4	A	599	FAD	C4X-C4-N3	-6.08	115.27	123.59
4	B	599	FAD	C4X-C4-N3	-5.97	115.42	123.59
6	C	699	HEM	C3C-CAC-CBC	-5.93	115.36	124.46
6	D	699	HEM	C3C-CAC-CBC	-5.86	115.46	124.46
4	B	599	FAD	C2B-C1B-N9A	-5.30	106.20	114.29
4	A	599	FAD	C2B-C1B-N9A	-5.07	106.55	114.29
4	B	599	FAD	O3'-C3'-C4'	-4.56	97.26	108.75
4	A	599	FAD	O3'-C3'-C4'	-3.93	98.85	108.75
6	C	699	HEM	CAA-C2A-C1A	-3.22	123.51	127.01
4	B	599	FAD	C4X-N5-C5X	-3.17	113.12	116.76
4	A	599	FAD	C4X-N5-C5X	-3.00	113.31	116.76
6	D	699	HEM	CMA-C3A-C4A	-2.67	123.95	128.36
6	C	699	HEM	CMA-C3A-C4A	-2.63	124.02	128.36
4	A	599	FAD	P-O3P-PA	-2.40	125.98	132.73

Continued on next page...

Continued from previous page...

Mol	Chain	Res	Type	Atoms	Z	Observed(°)	Ideal(°)
6	D	699	HEM	CAA-C2A-C1A	-2.25	124.56	127.01
4	B	599	FAD	P-O3P-PA	-2.16	126.67	132.73
4	A	599	FAD	C6-C5X-N5	-2.14	116.21	118.96
4	A	599	FAD	C9A-C5X-N5	2.15	125.53	122.36
4	B	599	FAD	O2'-C2'-C3'	2.15	114.42	109.02
4	B	599	FAD	C9A-C5X-N5	2.25	125.69	122.36
4	A	599	FAD	O3'-C3'-C2'	2.26	114.45	108.75
4	A	599	FAD	O2'-C2'-C3'	2.29	114.76	109.02
4	B	599	FAD	O4B-C1B-N9A	2.36	113.05	108.10
4	B	599	FAD	O3'-C3'-C2'	2.39	114.78	108.75
4	A	599	FAD	O4B-C1B-N9A	2.54	113.42	108.10
4	B	599	FAD	C1'-N10-C9A	2.86	122.07	118.86
6	C	699	HEM	CMD-C2D-C3D	2.91	127.21	114.35
6	D	699	HEM	CMD-C2D-C3D	3.02	127.73	114.35
4	A	599	FAD	C1'-N10-C9A	3.10	122.34	118.86
4	B	599	FAD	O3P-P-O5'	3.26	111.58	102.94
6	D	699	HEM	C2D-C3D-C4D	3.43	107.31	101.50
6	C	699	HEM	C2D-C3D-C4D	3.45	107.35	101.50
4	A	599	FAD	O4'-C4'-C5'	3.53	117.87	110.19
4	A	599	FAD	O3P-P-O5'	4.09	113.79	102.94
6	C	699	HEM	CAD-C3D-C4D	4.15	127.12	112.47
6	D	699	HEM	CAD-C3D-C4D	4.20	127.30	112.47
6	D	699	HEM	CAD-C3D-C2D	4.23	125.39	113.22
6	C	699	HEM	CAD-C3D-C2D	4.28	125.53	113.22
6	D	699	HEM	CMB-C2B-C3B	4.48	127.71	116.53
6	C	699	HEM	CMB-C2B-C3B	4.71	128.29	116.53
4	B	599	FAD	O4'-C4'-C3'	4.76	120.97	109.02
4	B	599	FAD	O4'-C4'-C5'	4.76	120.56	110.19
6	D	699	HEM	CMC-C2C-C3C	5.10	129.26	116.53
4	A	599	FAD	O4'-C4'-C3'	5.18	122.05	109.02
6	C	699	HEM	CMC-C2C-C3C	5.25	129.63	116.53
4	B	599	FAD	C4-N3-C2	14.05	127.39	115.25
4	A	599	FAD	C4-N3-C2	15.22	128.40	115.25

All (6) chirality outliers are listed below:

Mol	Chain	Res	Type	Atom
4	A	599	FAD	C4'
4	A	599	FAD	C2'
4	A	599	FAD	C3'
4	B	599	FAD	C4'
4	B	599	FAD	C2'

Continued on next page...

Continued from previous page...

Mol	Chain	Res	Type	Atom
4	B	599	FAD	C3'

There are no torsion outliers.

There are no ring outliers.

3 monomers are involved in 6 short contacts:

Mol	Chain	Res	Type	Clashes	Symm-Clashes
4	A	599	FAD	2	0
4	B	599	FAD	3	0
5	B	799	PCR	1	0

5.7 Other polymers [i](#)

There are no such residues in this entry.

5.8 Polymer linkage issues [i](#)

There are no chain breaks in this entry.

6 Fit of model and data [i](#)

6.1 Protein, DNA and RNA chains [i](#)

In the following table, the column labelled ‘#RSRZ> 2’ contains the number (and percentage) of RSRZ outliers, followed by percent RSRZ outliers for the chain as percentile scores relative to all X-ray entries and entries of similar resolution. The OWAB column contains the minimum, median, 95th percentile and maximum values of the occupancy-weighted average B-factor per residue. The column labelled ‘Q< 0.9’ lists the number of (and percentage) of residues with an average occupancy less than 0.9.

Mol	Chain	Analysed	<RSRZ>	#RSRZ>2	OWAB(Å ²)	Q<0.9
1	A	515/521 (98%)	-0.88	5 (0%) 84 80	17, 37, 73, 85	0
1	B	515/521 (98%)	-0.90	2 (0%) 93 92	19, 37, 71, 84	0
2	C	74/80 (92%)	-0.64	0 100 100	26, 43, 76, 87	0
2	D	74/80 (92%)	-0.68	1 (1%) 78 73	31, 47, 74, 87	0
All	All	1178/1202 (98%)	-0.86	8 (0%) 89 86	17, 38, 73, 87	0

All (8) RSRZ outliers are listed below:

Mol	Chain	Res	Type	RSRZ
1	A	7	ALA	3.1
1	A	361	ASP	2.8
1	A	316	THR	2.5
1	B	32	ASP	2.4
2	D	602	SER	2.3
1	A	520	ASP	2.3
1	A	315	ASP	2.1
1	B	361	ASP	2.1

6.2 Non-standard residues in protein, DNA, RNA chains [i](#)

There are no non-standard protein/DNA/RNA residues in this entry.

6.3 Carbohydrates [i](#)

There are no carbohydrates in this entry.

6.4 Ligands [i](#)

In the following table, the Atoms column lists the number of modelled atoms in the group and the number defined in the chemical component dictionary. LLDF column lists the quality of electron density of the group with respect to its neighbouring residues in protein, DNA or RNA chains. The B-factors column lists the minimum, median, 95th percentile and maximum values of B factors of atoms in the group. The column labelled 'Q< 0.9' lists the number of atoms with occupancy less than 0.9.

Mol	Type	Chain	Res	Atoms	RSCC	RSR	LLDF	B-factors(Å ²)	Q<0.9
5	PCR	B	799	8/8	0.97	0.12	6.42	25,28,33,34	0
5	PCR	A	798	8/8	0.98	0.08	1.21	13,25,31,32	0
6	HEM	C	699	43/43	0.97	0.11	0.20	25,37,48,59	0
6	HEM	D	699	43/43	0.97	0.10	0.18	23,40,51,55	0
4	FAD	B	599	53/53	0.99	0.07	0.05	16,27,32,35	0
4	FAD	A	599	53/53	0.99	0.06	-0.59	11,24,33,35	0
3	CL	A	702	1/1	0.99	0.03	-2.96	39,39,39,39	0
3	CL	B	701	1/1	0.99	0.03	-4.02	36,36,36,36	0

6.5 Other polymers [i](#)

There are no such residues in this entry.