



Full wwPDB X-ray Structure Validation Report ⓘ

Aug 22, 2016 – 05:03 AM EDT

PDB ID : 3DIV
Title : Crystal structure of laccase from *Cerrena maxima* at 1.76Å resolution
Authors : Lyashenko, A.V.; Zhukova, Y.N.; Mikhailov, A.M.
Deposited on : 2008-06-21
Resolution : 1.76 Å(reported)

This is a Full wwPDB X-ray Structure Validation Report for a publicly released PDB entry.

We welcome your comments at validation@mail.wwpdb.org

A user guide is available at

<http://wwpdb.org/validation/2016/XrayValidationReportHelp>

with specific help available everywhere you see the ⓘ symbol.

The following versions of software and data (see [references ⓘ](#)) were used in the production of this report:

MolProbity : 4.02b-467
Mogul : 1.7.1 (RC1), CSD as537be (2016)
Xtriage (Phenix) : 1.9-1692
EDS : rb-20027939
Percentile statistics : 20151230.v01 (using entries in the PDB archive December 30th 2015)
Refmac : 5.8.0135
CCP4 : 6.5.0
Ideal geometry (proteins) : Engh & Huber (2001)
Ideal geometry (DNA, RNA) : Parkinson et al. (1996)
Validation Pipeline (wwPDB-VP) : rb-20027939

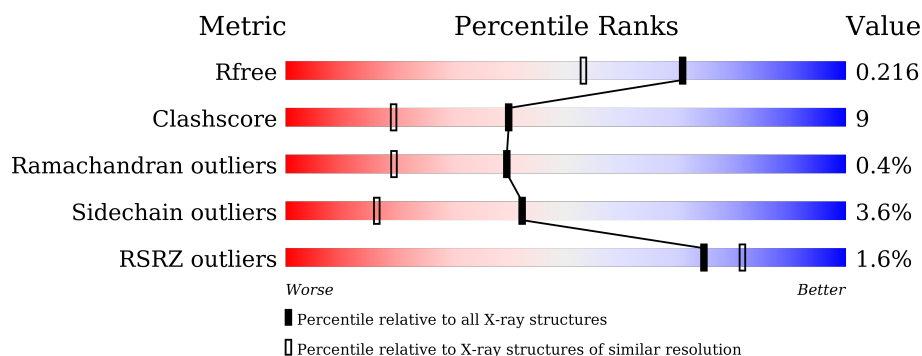
1 Overall quality at a glance

The following experimental techniques were used to determine the structure:

X-RAY DIFFRACTION

The reported resolution of this entry is 1.76 Å.

Percentile scores (ranging between 0-100) for global validation metrics of the entry are shown in the following graphic. The table shows the number of entries on which the scores are based.



Metric	Whole archive (#Entries)	Similar resolution (#Entries, resolution range(Å))
R_{free}	91344	1609 (1.76-1.76)
Clashscore	102246	1730 (1.76-1.76)
Ramachandran outliers	100387	1711 (1.76-1.76)
Sidechain outliers	100360	1711 (1.76-1.76)
RSRZ outliers	91569	1610 (1.76-1.76)

The table below summarises the geometric issues observed across the polymeric chains and their fit to the electron density. The red, orange, yellow and green segments on the lower bar indicate the fraction of residues that contain outliers for ≥ 3 , 2, 1 and 0 types of geometric quality criteria. A grey segment represents the fraction of residues that are not modelled. The numeric value for each fraction is indicated below the corresponding segment, with a dot representing fractions $\leq 5\%$. The upper red bar (where present) indicates the fraction of residues that have poor fit to the electron density. The numeric value is given above the bar.

Mol	Chain	Length	Quality of chain
1	A	499	

The following table lists non-polymeric compounds, carbohydrate monomers and non-standard residues in protein, DNA, RNA chains that are outliers for geometric or electron-density-fit criteria:

Mol	Type	Chain	Res	Chirality	Geometry	Clashes	Electron density
2	NAG	A	513	-	-	-	X
3	MAN	A	507	-	-	-	X

Continued on next page...

Continued from previous page...

Mol	Type	Chain	Res	Chirality	Geometry	Clashes	Electron density
6	CU	A	511	-	-	-	X

2 Entry composition [i](#)

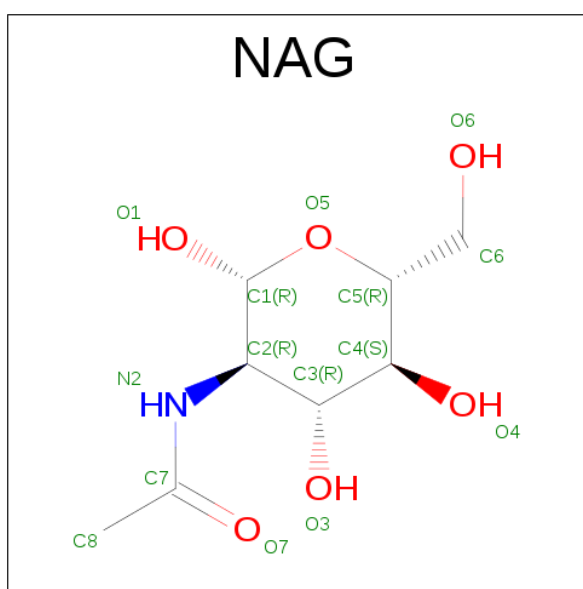
There are 7 unique types of molecules in this entry. The entry contains 4645 atoms, of which 0 are hydrogens and 0 are deuteriums.

In the tables below, the ZeroOcc column contains the number of atoms modelled with zero occupancy, the AltConf column contains the number of residues with at least one atom in alternate conformation and the Trace column contains the number of residues modelled with at most 2 atoms.

- Molecule 1 is a protein called LACCASE.

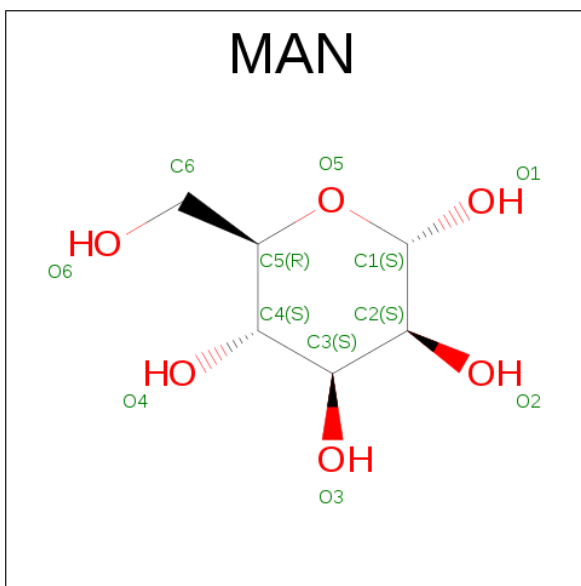
Mol	Chain	Residues	Atoms					ZeroOcc	AltConf	Trace
1	A	499	Total	C	N	O	S	0	7	0
			3823	2422	657	737	7			

- Molecule 2 is SUGAR (N-ACETYL-D-GLUCOSAMINE) (three-letter code: NAG) (formula: $C_8H_{15}NO_6$).



Mol	Chain	Residues	Atoms				ZeroOcc	AltConf
2	A	1	Total	C	N	O	0	0
			14	8	1	5		
2	A	1	Total	C	N	O	0	0
			14	8	1	5		
2	A	1	Total	C	N	O	0	0
			14	8	1	5		
2	A	1	Total	C	N	O	0	0
			14	8	1	5		
2	A	1	Total	C	N	O	0	0
			14	8	1	5		

- Molecule 3 is SUGAR (ALPHA-D-MANNOSE) (three-letter code: MAN) (formula: $C_6H_{12}O_6$).

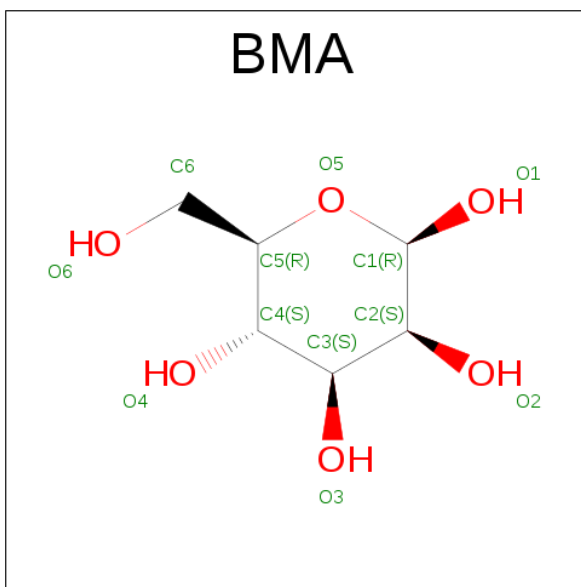


Mol	Chain	Residues	Atoms			ZeroOcc	AltConf
3	A	1	Total	C	O	0	0
			11	6	5		
3	A	1	Total	C	O	0	0
			11	6	5		
3	A	1	Total	C	O	0	0
			11	6	5		
3	A	1	Total	C	O	0	0
			11	6	5		

- Molecule 4 is a polymer of unknown type called SUGAR (2-MER).

Mol	Chain	Residues	Atoms				ZeroOcc	AltConf
4	A	2	Total	C	N	O	0	0
			28	16	2	10		

- Molecule 5 is SUGAR (BETA-D-MANNOSE) (three-letter code: BMA) (formula: $C_6H_{12}O_6$).



Mol	Chain	Residues	Atoms			ZeroOcc	AltConf
5	A	1	Total	C	O	0	0
			11	6	5		

- Molecule 6 is COPPER (II) ION (three-letter code: CU) (formula: Cu).

Mol	Chain	Residues	Atoms		ZeroOcc	AltConf
6	A	4	Total	Cu	0	0
			4	4		

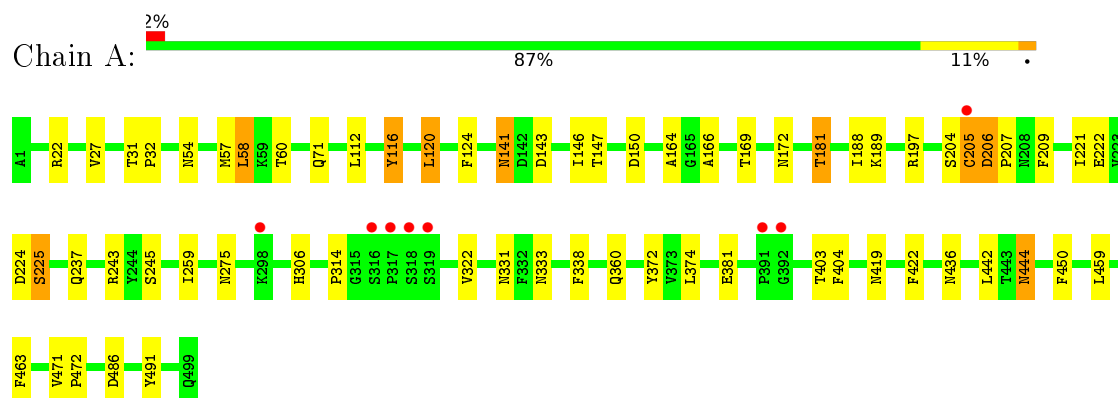
- Molecule 7 is water.

Mol	Chain	Residues	Atoms		ZeroOcc	AltConf
7	A	665	Total	O	0	0
			665	665		

3 Residue-property plots

These plots are drawn for all protein, RNA and DNA chains in the entry. The first graphic for a chain summarises the proportions of errors displayed in the second graphic. The second graphic shows the sequence view annotated by issues in geometry and electron density. Residues are color-coded according to the number of geometric quality criteria for which they contain at least one outlier: green = 0, yellow = 1, orange = 2 and red = 3 or more. A red dot above a residue indicates a poor fit to the electron density ($\text{RSRZ} > 2$). Stretches of 2 or more consecutive residues without any outlier are shown as a green connector. Residues present in the sample, but not in the model, are shown in grey.

• Molecule 1: LACCASE



4 Data and refinement statistics

Property	Value	Source
Space group	P 21 21 21	Depositor
Cell constants a, b, c, α , β , γ	52.58 Å 77.10 Å 130.88 Å 90.00° 90.00° 90.00°	Depositor
Resolution (Å)	7.99 – 1.76 7.99 – 1.76	Depositor EDS
% Data completeness (in resolution range)	99.9 (7.99-1.76) 99.9 (7.99-1.76)	Depositor EDS
R_{merge}	0.18	Depositor
R_{sym}	(Not available)	Depositor
$\langle I/\sigma(I) \rangle$ ¹	1.97 (at 1.76 Å)	Xtriage
Refinement program	REFMAC 5.2.0019	Depositor
R, R_{free}	0.176 , 0.217 0.181 , 0.216	Depositor DCC
R_{free} test set	2643 reflections (5.26%)	DCC
Wilson B-factor (Å ²)	14.6	Xtriage
Anisotropy	0.089	Xtriage
Bulk solvent k_{sol} (e/Å ³), B_{sol} (Å ²)	0.48 , 70.2	EDS
L-test for twinning ²	$\langle L \rangle = 0.47$, $\langle L^2 \rangle = 0.30$	Xtriage
Estimated twinning fraction	No twinning to report.	Xtriage
F_o, F_c correlation	0.95	EDS
Total number of atoms	4645	wwPDB-VP
Average B, all atoms (Å ²)	16.0	wwPDB-VP

Xtriage's analysis on translational NCS is as follows: *The largest off-origin peak in the Patterson function is 5.10% of the height of the origin peak. No significant pseudotranslation is detected.*

¹Intensities estimated from amplitudes.

²Theoretical values of $\langle |L| \rangle$, $\langle L^2 \rangle$ for acentric reflections are 0.5, 0.333 respectively for untwinned datasets, and 0.375, 0.2 for perfectly twinned datasets.

5 Model quality [i](#)

5.1 Standard geometry [i](#)

Bond lengths and bond angles in the following residue types are not validated in this section: MAN, BMA, NAG, CU, NIY

The Z score for a bond length (or angle) is the number of standard deviations the observed value is removed from the expected value. A bond length (or angle) with $|Z| > 5$ is considered an outlier worth inspection. RMSZ is the root-mean-square of all Z scores of the bond lengths (or angles).

Mol	Chain	Bond lengths		Bond angles	
		RMSZ	$\# Z > 5$	RMSZ	$\# Z > 5$
1	A	0.54	0/3926	0.62	0/5388

There are no bond length outliers.

There are no bond angle outliers.

There are no chirality outliers.

There are no planarity outliers.

5.2 Too-close contacts [i](#)

In the following table, the Non-H and H(model) columns list the number of non-hydrogen atoms and hydrogen atoms in the chain respectively. The H(added) column lists the number of hydrogen atoms added and optimized by MolProbity. The Clashes column lists the number of clashes within the asymmetric unit, whereas Symm-Clashes lists symmetry related clashes.

Mol	Chain	Non-H	H(model)	H(added)	Clashes	Symm-Clashes
1	A	3823	0	3631	54	0
2	A	70	0	65	11	0
3	A	44	0	40	5	0
4	A	28	0	24	7	0
5	A	11	0	10	5	0
6	A	4	0	0	0	0
7	A	665	0	0	8	0
All	All	4645	0	3770	64	0

The all-atom clashscore is defined as the number of clashes found per 1000 atoms (including hydrogen atoms). The all-atom clashscore for this structure is 9.

All (64) close contacts within the same asymmetric unit are listed below, sorted by their clash magnitude.

Atom-1	Atom-2	Interatomic distance (Å)	Clash overlap (Å)
1:A:54:ASN:HD21	4:A:503:NAG:C1	0.95	1.56
1:A:333:ASN:HD21	2:A:513:NAG:C1	1.07	1.52
1:A:436:ASN:HD21	2:A:514:NAG:C1	1.38	1.33
1:A:333:ASN:ND2	2:A:513:NAG:C1	1.92	1.29
5:A:505:BMA:O6	3:A:506:MAN:C1	1.82	1.26
1:A:206:ASP:HB3	1:A:207:PRO:HD3	1.34	1.10
1:A:436:ASN:ND2	2:A:514:NAG:C1	2.17	1.07
1:A:360:GLN:O	1:A:471:VAL:HG21	1.63	0.99
2:A:500:NAG:HO4	2:A:501:NAG:C1	1.77	0.93
1:A:206:ASP:HB3	1:A:207:PRO:CD	2.01	0.91
4:A:504:NAG:C4	5:A:505:BMA:C1	2.60	0.80
1:A:146:ILE:HA	1:A:172:ASN:HD21	1.51	0.76
3:A:506:MAN:C3	3:A:507:MAN:C1	2.64	0.75
1:A:54:ASN:HD21	4:A:503:NAG:C2	1.96	0.74
1:A:306:HIS:HE1	7:A:825:HOH:O	1.72	0.72
1:A:57:MET:O	1:A:58:LEU:HB2	1.86	0.72
5:A:505:BMA:O3	3:A:508:MAN:H3	1.90	0.71
1:A:54:ASN:CG	4:A:503:NAG:C1	2.60	0.69
1:A:225:SER:O	7:A:753:HOH:O	2.09	0.69
5:A:505:BMA:C6	3:A:506:MAN:C1	2.70	0.68
1:A:436:ASN:HD21	2:A:514:NAG:C2	2.06	0.67
1:A:486:ASP:OD1	7:A:872:HOH:O	2.13	0.67
2:A:500:NAG:C4	2:A:501:NAG:C1	2.75	0.64
4:A:504:NAG:O4	5:A:505:BMA:O5	2.18	0.62
1:A:164:ALA:HB1	7:A:892:HOH:O	2.02	0.59
1:A:209:PHE:HD1	7:A:527:HOH:O	1.84	0.59
1:A:237:GLN:NE2	7:A:842:HOH:O	2.37	0.55
1:A:222:GLU:OE2	1:A:225:SER:HA	2.07	0.54
1:A:436:ASN:ND2	2:A:514:NAG:C2	2.69	0.54
1:A:141:ASN:HD22	1:A:141:ASN:C	2.11	0.54
1:A:224:ASP:O	1:A:225:SER:CB	2.54	0.53
1:A:27:VAL:HG22	1:A:120:LEU:HD13	1.90	0.53
1:A:471:VAL:HG23	1:A:472:PRO:HD3	1.91	0.52
1:A:150:ASP:HB2	1:A:166:ALA:HB2	1.92	0.52
1:A:403[B]:THR:HG22	1:A:422:PHE:HB3	1.93	0.51
1:A:27:VAL:CG2	1:A:120:LEU:HD13	2.42	0.49
1:A:372:NIY:O1	7:A:1001:HOH:O	2.18	0.49
1:A:471:VAL:CG2	1:A:472:PRO:HD3	2.43	0.48
1:A:60:THR:HG21	1:A:491:TYR:CE1	2.49	0.47
1:A:54:ASN:ND2	4:A:503:NAG:C2	2.66	0.46
1:A:306:HIS:HD2	1:A:419:ASN:O	1.99	0.46
1:A:116:TYR:CE1	1:A:205:CYS:SG	3.10	0.45

Continued on next page...

Continued from previous page...

Atom-1	Atom-2	Interatomic distance (Å)	Clash overlap (Å)
1:A:141:ASN:ND2	1:A:143:ASP:H	2.15	0.45
2:A:514:NAG:O4	2:A:515:NAG:C1	2.64	0.45
1:A:147:THR:H	1:A:172:ASN:ND2	2.14	0.45
1:A:322:VAL:HG11	1:A:381:GLU:HB2	2.00	0.44
1:A:54:ASN:ND2	4:A:503:NAG:O5	2.43	0.44
1:A:404:PHE:O	1:A:422:PHE:HA	2.18	0.44
1:A:189:LYS:HE2	7:A:975:HOH:O	2.17	0.43
1:A:31:THR:HA	1:A:32:PRO:C	2.38	0.43
1:A:60:THR:HG21	1:A:491:TYR:HE1	1.84	0.43
1:A:58:LEU:HD13	1:A:112:LEU:CD2	2.49	0.43
1:A:197:ARG:HG3	1:A:221:ILE:HD11	2.01	0.42
1:A:314:PRO:HB3	1:A:442:LEU:CD2	2.49	0.42
1:A:444:ASN:ND2	1:A:444:ASN:H	2.16	0.42
1:A:331:ASN:HB2	1:A:338:PHE:HB2	2.01	0.42
1:A:188:ILE:HD12	1:A:259:ILE:HD13	2.00	0.42
1:A:204:SER:HB2	1:A:209:PHE:HE1	1.84	0.41
1:A:169:THR:HB	1:A:275:ASN:HD22	1.84	0.41
1:A:58:LEU:CD1	1:A:112:LEU:HG	2.51	0.41
1:A:222:GLU:HB3	1:A:245:SER:HB2	2.03	0.41
2:A:501:NAG:O4	3:A:502:MAN:C1	2.69	0.40
1:A:436:ASN:CG	2:A:514:NAG:C1	2.85	0.40

There are no symmetry-related clashes.

5.3 Torsion angles [i](#)

5.3.1 Protein backbone [i](#)

In the following table, the Percentiles column shows the percent Ramachandran outliers of the chain as a percentile score with respect to all X-ray entries followed by that with respect to entries of similar resolution.

The Analysed column shows the number of residues for which the backbone conformation was analysed, and the total number of residues.

Mol	Chain	Analysed	Favoured	Allowed	Outliers	Percentiles
1	A	502/499 (101%)	485 (97%)	15 (3%)	2 (0%)	39 19

All (2) Ramachandran outliers are listed below:

Mol	Chain	Res	Type
1	A	206	ASP
1	A	58	LEU

5.3.2 Protein sidechains [i](#)

In the following table, the Percentiles column shows the percent sidechain outliers of the chain as a percentile score with respect to all X-ray entries followed by that with respect to entries of similar resolution.

The Analysed column shows the number of residues for which the sidechain conformation was analysed, and the total number of residues.

Mol	Chain	Analysed	Rotameric	Outliers	Percentiles	
1	A	418/411 (102%)	401 (96%)	17 (4%)	37	13

All (17) residues with a non-rotameric sidechain are listed below:

Mol	Chain	Res	Type
1	A	22	ARG
1	A	71[A]	GLN
1	A	71[B]	GLN
1	A	116	TYR
1	A	120	LEU
1	A	124	PHE
1	A	141	ASN
1	A	181[A]	THR
1	A	181[B]	THR
1	A	205	CYS
1	A	225	SER
1	A	243	ARG
1	A	374	LEU
1	A	444	ASN
1	A	450	PHE
1	A	459	LEU
1	A	463	PHE

Some sidechains can be flipped to improve hydrogen bonding and reduce clashes. All (11) such sidechains are listed below:

Mol	Chain	Res	Type
1	A	54	ASN
1	A	115	GLN
1	A	141	ASN

Continued on next page...

Continued from previous page...

Mol	Chain	Res	Type
1	A	172	ASN
1	A	237	GLN
1	A	275	ASN
1	A	306	HIS
1	A	333	ASN
1	A	436	ASN
1	A	444	ASN
1	A	467	GLN

5.3.3 RNA [i](#)

There are no RNA molecules in this entry.

5.4 Non-standard residues in protein, DNA, RNA chains [i](#)

2 non-standard protein/DNA/RNA residues are modelled in this entry.

In the following table, the Counts columns list the number of bonds (or angles) for which Mogul statistics could be retrieved, the number of bonds (or angles) that are observed in the model and the number of bonds (or angles) that are defined in the chemical component dictionary. The Link column lists molecule types, if any, to which the group is linked. The Z score for a bond length (or angle) is the number of standard deviations the observed value is removed from the expected value. A bond length (or angle) with $|Z| > 2$ is considered an outlier worth inspection. RMSZ is the root-mean-square of all Z scores of the bond lengths (or angles).

Mol	Type	Chain	Res	Link	Bond lengths			Bond angles		
					Counts	RMSZ	$\# Z > 2$	Counts	RMSZ	$\# Z > 2$
1	NIY	A	196	1	11,15,16	0.35	0	11,20,22	1.00	0
1	NIY	A	372	1	11,15,16	0.35	0	11,20,22	1.01	0

In the following table, the Chirals column lists the number of chiral outliers, the number of chiral centers analysed, the number of these observed in the model and the number defined in the chemical component dictionary. Similar counts are reported in the Torsion and Rings columns. '-' means no outliers of that kind were identified.

Mol	Type	Chain	Res	Link	Chirals	Torsions	Rings
1	NIY	A	196	1	-	0/7/10/12	0/1/1/1
1	NIY	A	372	1	-	0/7/10/12	0/1/1/1

There are no bond length outliers.

There are no bond angle outliers.

There are no chirality outliers.

There are no torsion outliers.

There are no ring outliers.

1 monomer is involved in 1 short contact:

Mol	Chain	Res	Type	Clashes	Symm-Clashes
1	A	372	NIY	1	0

5.5 Carbohydrates [i](#)

2 carbohydrates are modelled in this entry.

In the following table, the Counts columns list the number of bonds (or angles) for which Mogul statistics could be retrieved, the number of bonds (or angles) that are observed in the model and the number of bonds (or angles) that are defined in the chemical component dictionary. The Link column lists molecule types, if any, to which the group is linked. The Z score for a bond length (or angle) is the number of standard deviations the observed value is removed from the expected value. A bond length (or angle) with $|Z| > 2$ is considered an outlier worth inspection. RMSZ is the root-mean-square of all Z scores of the bond lengths (or angles).

Mol	Type	Chain	Res	Link	Bond lengths			Bond angles		
					Counts	RMSZ	$\# Z > 2$	Counts	RMSZ	$\# Z > 2$
4	NAG	A	503	1,4	14,14,15	0.58	0	15,19,21	1.46	2 (13%)
4	NAG	A	504	5,4	14,14,15	0.77	0	15,19,21	1.33	2 (13%)

In the following table, the Chirals column lists the number of chiral outliers, the number of chiral centers analysed, the number of these observed in the model and the number defined in the chemical component dictionary. Similar counts are reported in the Torsion and Rings columns. '-' means no outliers of that kind were identified.

Mol	Type	Chain	Res	Link	Chirals	Torsions	Rings
4	NAG	A	503	1,4	-	0/6/23/26	0/1/1/1
4	NAG	A	504	5,4	-	0/6/23/26	0/1/1/1

There are no bond length outliers.

All (4) bond angle outliers are listed below:

Mol	Chain	Res	Type	Atoms	Z	Observed(°)	Ideal(°)
4	A	504	NAG	O4-C4-C5	-3.01	101.30	109.23
4	A	503	NAG	C1-O5-C5	-2.94	107.81	112.14
4	A	504	NAG	C3-C4-C5	2.36	114.44	110.23
4	A	503	NAG	O5-C5-C6	2.38	112.43	107.34

There are no chirality outliers.

There are no torsion outliers.

There are no ring outliers.

2 monomers are involved in 7 short contacts:

Mol	Chain	Res	Type	Clashes	Symm-Clashes
4	A	503	NAG	5	0
4	A	504	NAG	2	0

5.6 Ligand geometry [i](#)

Of 14 ligands modelled in this entry, 4 are monoatomic - leaving 10 for Mogul analysis.

In the following table, the Counts columns list the number of bonds (or angles) for which Mogul statistics could be retrieved, the number of bonds (or angles) that are observed in the model and the number of bonds (or angles) that are defined in the chemical component dictionary. The Link column lists molecule types, if any, to which the group is linked. The Z score for a bond length (or angle) is the number of standard deviations the observed value is removed from the expected value. A bond length (or angle) with $|Z| > 2$ is considered an outlier worth inspection. RMSZ is the root-mean-square of all Z scores of the bond lengths (or angles).

Mol	Type	Chain	Res	Link	Bond lengths			Bond angles		
					Counts	RMSZ	$\# Z > 2$	Counts	RMSZ	$\# Z > 2$
2	NAG	A	500	1,2	14,14,15	0.44	0	15,19,21	1.11	2 (13%)
2	NAG	A	501	2	14,14,15	0.53	0	15,19,21	1.17	3 (20%)
3	MAN	A	502	-	11,11,12	0.64	0	15,15,17	0.82	0
5	BMA	A	505	4	11,11,12	0.55	0	15,15,17	1.50	3 (20%)
3	MAN	A	506	3	11,11,12	0.63	0	15,15,17	1.47	2 (13%)
3	MAN	A	507	3	11,11,12	0.63	0	15,15,17	1.57	2 (13%)
3	MAN	A	508	-	11,11,12	0.65	0	15,15,17	1.12	2 (13%)
2	NAG	A	513	-	14,14,15	0.54	0	15,19,21	1.09	1 (6%)
2	NAG	A	514	-	14,14,15	0.52	0	15,19,21	1.00	1 (6%)
2	NAG	A	515	-	14,14,15	0.55	0	15,19,21	0.82	0

In the following table, the Chirals column lists the number of chiral outliers, the number of chiral centers analysed, the number of these observed in the model and the number defined in the chemical component dictionary. Similar counts are reported in the Torsion and Rings columns. '-' means no outliers of that kind were identified.

Mol	Type	Chain	Res	Link	Chirals	Torsions	Rings
2	NAG	A	500	1,2	-	0/6/23/26	0/1/1/1
2	NAG	A	501	2	-	0/6/23/26	0/1/1/1

Continued on next page...

Continued from previous page...

Mol	Type	Chain	Res	Link	Chirals	Torsions	Rings
3	MAN	A	502	-	-	0/2/19/22	0/1/1/1
5	BMA	A	505	4	-	0/2/19/22	0/1/1/1
3	MAN	A	506	3	-	0/2/19/22	0/1/1/1
3	MAN	A	507	3	-	0/2/19/22	0/1/1/1
3	MAN	A	508	-	-	0/2/19/22	0/1/1/1
2	NAG	A	513	-	-	0/6/23/26	0/1/1/1
2	NAG	A	514	-	-	0/6/23/26	0/1/1/1
2	NAG	A	515	-	-	0/6/23/26	0/1/1/1

There are no bond length outliers.

All (16) bond angle outliers are listed below:

Mol	Chain	Res	Type	Atoms	Z	Observed(°)	Ideal(°)
5	A	505	BMA	C1-C2-C3	-3.52	105.29	109.55
2	A	501	NAG	C1-O5-C5	-2.45	108.54	112.14
2	A	500	NAG	C2-N2-C7	-2.30	120.12	123.11
5	A	505	BMA	C1-O5-C5	-2.23	108.87	112.14
2	A	514	NAG	C1-O5-C5	-2.17	108.95	112.14
2	A	501	NAG	O4-C4-C3	-2.16	105.50	110.36
2	A	500	NAG	O5-C5-C6	2.01	111.65	107.34
3	A	508	MAN	C1-C2-C3	2.05	112.04	109.55
3	A	507	MAN	C1-C2-C3	2.16	112.17	109.55
3	A	508	MAN	C1-O5-C5	2.19	115.36	112.14
2	A	501	NAG	C3-C4-C5	2.20	114.15	110.23
3	A	506	MAN	C2-C3-C4	2.34	115.14	111.05
5	A	505	BMA	O5-C5-C6	2.36	112.38	107.34
2	A	513	NAG	C2-N2-C7	3.00	127.01	123.11
3	A	506	MAN	C1-O5-C5	3.89	117.86	112.14
3	A	507	MAN	C1-O5-C5	4.27	118.42	112.14

There are no chirality outliers.

There are no torsion outliers.

There are no ring outliers.

10 monomers are involved in 17 short contacts:

Mol	Chain	Res	Type	Clashes	Symm-Clashes
2	A	500	NAG	2	0
2	A	501	NAG	3	0
3	A	502	MAN	1	0
5	A	505	BMA	5	0

Continued on next page...

Continued from previous page...

Mol	Chain	Res	Type	Clashes	Symm-Clashes
3	A	506	MAN	3	0
3	A	507	MAN	1	0
3	A	508	MAN	1	0
2	A	513	NAG	2	0
2	A	514	NAG	6	0
2	A	515	NAG	1	0

5.7 Other polymers [i](#)

There are no such residues in this entry.

5.8 Polymer linkage issues [i](#)

There are no chain breaks in this entry.

6 Fit of model and data [i](#)

6.1 Protein, DNA and RNA chains [i](#)

In the following table, the column labelled ‘#RSRZ> 2’ contains the number (and percentage) of RSRZ outliers, followed by percent RSRZ outliers for the chain as percentile scores relative to all X-ray entries and entries of similar resolution. The OWAB column contains the minimum, median, 95th percentile and maximum values of the occupancy-weighted average B-factor per residue. The column labelled ‘Q< 0.9’ lists the number of (and percentage) of residues with an average occupancy less than 0.9.

Mol	Chain	Analysed	<RSRZ>	#RSRZ>2	OWAB(Å ²)	Q<0.9
1	A	497/499 (99%)	-0.23	8 (1%) 74 81	5, 13, 23, 35	4 (0%)

All (8) RSRZ outliers are listed below:

Mol	Chain	Res	Type	RSRZ
1	A	298[A]	LYS	4.4
1	A	318	SER	3.2
1	A	205	CYS	2.8
1	A	391	PRO	2.6
1	A	392	GLY	2.5
1	A	317	PRO	2.3
1	A	316	SER	2.3
1	A	319	SER	2.0

6.2 Non-standard residues in protein, DNA, RNA chains [i](#)

In the following table, the Atoms column lists the number of modelled atoms in the group and the number defined in the chemical component dictionary. LLDF column lists the quality of electron density of the group with respect to its neighbouring residues in protein, DNA or RNA chains. The B-factors column lists the minimum, median, 95th percentile and maximum values of B factors of atoms in the group. The column labelled ‘Q< 0.9’ lists the number of atoms with occupancy less than 0.9.

Mol	Type	Chain	Res	Atoms	RSCC	RSR	LLDF	B-factors(Å ²)	Q<0.9
1	NIY	A	196	15/16	0.88	0.13	-	10,13,17,17	0
1	NIY	A	372	15/16	0.83	0.16	-	15,17,19,20	0

6.3 Carbohydrates [i](#)

In the following table, the Atoms column lists the number of modelled atoms in the group and the number defined in the chemical component dictionary. LLDF column lists the quality of electron

density of the group with respect to its neighbouring residues in protein, DNA or RNA chains. The B-factors column lists the minimum, median, 95th percentile and maximum values of B factors of atoms in the group. The column labelled 'Q< 0.9' lists the number of atoms with occupancy less than 0.9.

Mol	Type	Chain	Res	Atoms	RSCC	RSR	LLDF	B-factors(Å ²)	Q<0.9
4	NAG	A	504	14/15	0.94	0.09	-0.22	10,14,18,20	0
4	NAG	A	503	14/15	0.95	0.08	-0.31	13,15,20,21	0

6.4 Ligands [i](#)

In the following table, the Atoms column lists the number of modelled atoms in the group and the number defined in the chemical component dictionary. LLDF column lists the quality of electron density of the group with respect to its neighbouring residues in protein, DNA or RNA chains. The B-factors column lists the minimum, median, 95th percentile and maximum values of B factors of atoms in the group. The column labelled 'Q< 0.9' lists the number of atoms with occupancy less than 0.9.

Mol	Type	Chain	Res	Atoms	RSCC	RSR	LLDF	B-factors(Å ²)	Q<0.9
2	NAG	A	513	14/15	0.74	0.22	16.04	36,37,37,38	0
6	CU	A	511	1/1	0.99	0.12	5.53	27,27,27,27	0
3	MAN	A	507	11/12	0.85	0.14	2.56	19,20,22,26	0
2	NAG	A	514	14/15	0.82	0.17	1.96	28,30,30,30	0
2	NAG	A	501	14/15	0.88	0.13	0.79	24,29,31,32	0
6	CU	A	512	1/1	0.94	0.14	0.66	54,54,54,54	0
2	NAG	A	500	14/15	0.90	0.11	-0.32	20,24,26,26	0
6	CU	A	509	1/1	0.99	0.02	-4.74	17,17,17,17	0
6	CU	A	510	1/1	1.00	0.02	-5.70	17,17,17,17	0
2	NAG	A	515	14/15	0.53	0.36	-	48,54,55,55	0
5	BMA	A	505	11/12	0.93	0.10	-	15,16,18,19	0
3	MAN	A	506	11/12	0.89	0.12	-	15,18,21,23	0
3	MAN	A	508	11/12	0.52	0.31	-	50,52,52,52	0
3	MAN	A	502	11/12	0.38	0.30	-	53,55,56,56	0

6.5 Other polymers [i](#)

There are no such residues in this entry.