



# Full wwPDB X-ray Structure Validation Report ⓘ

Feb 1, 2016 – 03:48 PM GMT

PDB ID : 4DIT  
Title : Crystal Structure of GSK3beta in complex with a Imidazopyridine inhibitor  
Authors : Kim, H.T.; Lee, S.C.; Chang, H.J.  
Deposited on : 2012-01-31  
Resolution : 2.60 Å(reported)

This is a Full wwPDB X-ray Structure Validation Report for a publicly released PDB entry.  
We welcome your comments at [validation@mail.wwpdb.org](mailto:validation@mail.wwpdb.org)  
A user guide is available at  
<http://wwpdb.org/validation/2016/XrayValidationReportHelp>  
with specific help available everywhere you see the ⓘ symbol.

---

The following versions of software and data (see [references ⓘ](#)) were used in the production of this report:

MolProbity : 4.02b-467  
Mogul : 1.7 (RC4), CSD as536be (2015)  
Xtriage (Phenix) : 1.9-1692  
EDS : rb-20026688  
Percentile statistics : 20151230.v01 (using entries in the PDB archive December 30th 2015)  
Refmac : 5.8.0135  
CCP4 : 6.5.0  
Ideal geometry (proteins) : Engh & Huber (2001)  
Ideal geometry (DNA, RNA) : Parkinson et al. (1996)  
Validation Pipeline (wwPDB-VP) : trunk26865

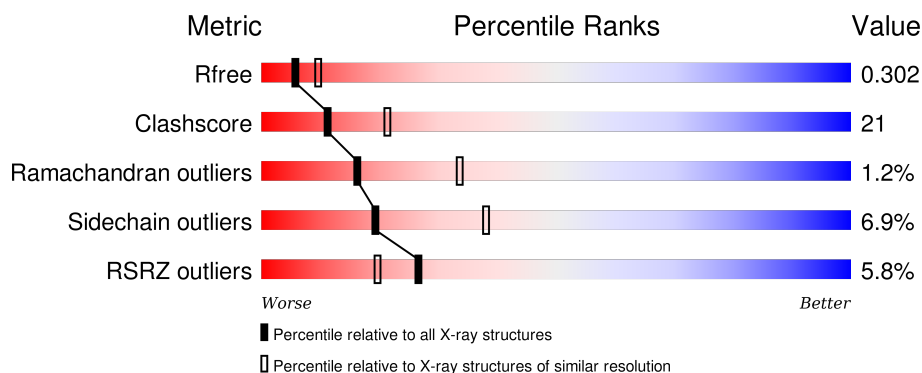
# 1 Overall quality at a glance

The following experimental techniques were used to determine the structure:

## *X-RAY DIFFRACTION*

The reported resolution of this entry is 2.60 Å.

Percentile scores (ranging between 0-100) for global validation metrics of the entry are shown in the following graphic. The table shows the number of entries on which the scores are based.



Metric	Whole archive (#Entries)	Similar resolution (#Entries, resolution range(Å))
$R_{free}$	91344	2328 (2.60-2.60)
Clashscore	102246	2679 (2.60-2.60)
Ramachandran outliers	100387	2635 (2.60-2.60)
Sidechain outliers	100360	2635 (2.60-2.60)
RSRZ outliers	91569	2334 (2.60-2.60)

The table below summarises the geometric issues observed across the polymeric chains and their fit to the electron density. The red, orange, yellow and green segments on the lower bar indicate the fraction of residues that contain outliers for  $\geq 3$ , 2, 1 and 0 types of geometric quality criteria. A grey segment represents the fraction of residues that are not modelled. The numeric value for each fraction is indicated below the corresponding segment, with a dot representing fractions  $\leq 5\%$ . The upper red bar (where present) indicates the fraction of residues that have poor fit to the electron density. The numeric value is given above the bar.

Mol	Chain	Length	Quality of chain
1	A	382	<div> <div>5%</div> <div>48%</div> <div>34%</div> <div>•</div> <div>14%</div> </div>

## 2 Entry composition

There are 3 unique types of molecules in this entry. The entry contains 2692 atoms, of which 0 are hydrogens and 0 are deuteriums.

In the tables below, the ZeroOcc column contains the number of atoms modelled with zero occupancy, the AltConf column contains the number of residues with at least one atom in alternate conformation and the Trace column contains the number of residues modelled with at most 2 atoms.

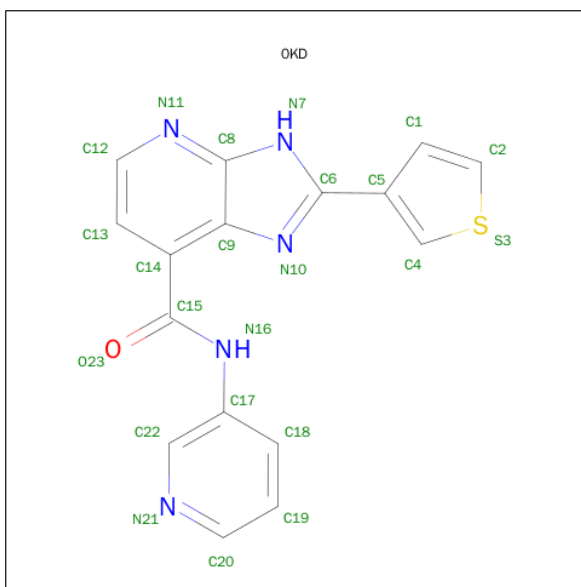
- Molecule 1 is a protein called Glycogen synthase kinase-3 beta.

Mol	Chain	Residues	Atoms						ZeroOcc	AltConf	Trace
1	A	329	Total	C	N	O	P	S	0	0	0
			2628	1687	449	481	1	10			

There are 15 discrepancies between the modelled and reference sequences:

Chain	Residue	Modelled	Actual	Comment	Reference
A	23	MET	-	EXPRESSION TAG	UNP P49841
A	24	ARG	-	EXPRESSION TAG	UNP P49841
A	25	GLY	-	EXPRESSION TAG	UNP P49841
A	26	SER	-	EXPRESSION TAG	UNP P49841
A	394	ALA	-	EXPRESSION TAG	UNP P49841
A	395	ALA	-	EXPRESSION TAG	UNP P49841
A	396	ALA	-	EXPRESSION TAG	UNP P49841
A	397	LEU	-	EXPRESSION TAG	UNP P49841
A	398	GLU	-	EXPRESSION TAG	UNP P49841
A	399	HIS	-	EXPRESSION TAG	UNP P49841
A	400	HIS	-	EXPRESSION TAG	UNP P49841
A	401	HIS	-	EXPRESSION TAG	UNP P49841
A	402	HIS	-	EXPRESSION TAG	UNP P49841
A	403	HIS	-	EXPRESSION TAG	UNP P49841
A	404	HIS	-	EXPRESSION TAG	UNP P49841

- Molecule 2 is N-(PYRIDIN-3-YL)-2-(THIOPHEN-3-YL)-3H-IMIDAZO[4,5-B]PYRIDINE-7-CARBOXAMIDE (three-letter code: 0KD) (formula: C<sub>16</sub>H<sub>11</sub>N<sub>5</sub>OS).



Mol	Chain	Residues	Atoms					ZeroOcc	AltConf
			Total	C	N	O	S		
2	A	1	23	16	5	1	1	0	0

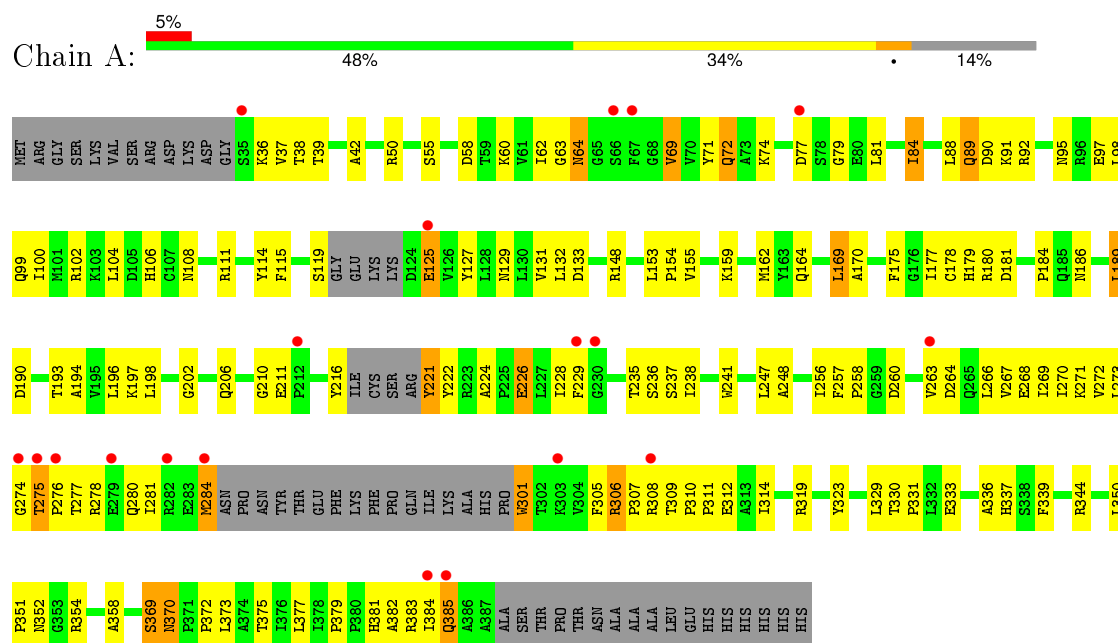
- Molecule 3 is water.

Mol	Chain	Residues	Atoms		ZeroOcc	AltConf
3	A	41	Total	O	0	0
			41	41		

### 3 Residue-property plots [i](#)

These plots are drawn for all protein, RNA and DNA chains in the entry. The first graphic for a chain summarises the proportions of errors displayed in the second graphic. The second graphic shows the sequence view annotated by issues in geometry and electron density. Residues are color-coded according to the number of geometric quality criteria for which they contain at least one outlier: green = 0, yellow = 1, orange = 2 and red = 3 or more. A red dot above a residue indicates a poor fit to the electron density ( $RSRZ > 2$ ). Stretches of 2 or more consecutive residues without any outlier are shown as a green connector. Residues present in the sample, but not in the model, are shown in grey.

- Molecule 1: Glycogen synthase kinase-3 beta



## 4 Data and refinement statistics

Property	Value	Source
Space group	P 21 21 21	Depositor
Cell constants a, b, c, $\alpha$ , $\beta$ , $\gamma$	70.78Å 72.54Å 80.66Å 90.00° 90.00° 90.00°	Depositor
Resolution (Å)	40.33 – 2.60 40.33 – 2.57	Depositor EDS
% Data completeness (in resolution range)	88.3 (40.33-2.60) 86.8 (40.33-2.57)	Depositor EDS
$R_{merge}$	0.04	Depositor
$R_{sym}$	0.04	Depositor
$\langle I/\sigma(I) \rangle$ <sup>1</sup>	2.51 (at 2.58Å)	Xtriage
Refinement program	CNS 1.1	Depositor
R, $R_{free}$	0.240 , 0.304 0.240 , 0.302	Depositor DCC
$R_{free}$ test set	594 reflections (5.07%)	DCC
Wilson B-factor (Å <sup>2</sup> )	65.7	Xtriage
Anisotropy	0.275	Xtriage
Bulk solvent $k_{sol}$ (e/Å <sup>3</sup> ), $B_{sol}$ (Å <sup>2</sup> )	0.33 , 54.2	EDS
Estimated twinning fraction	0.024 for k,h,-l	Xtriage
L-test for twinning <sup>2</sup>	$\langle  L  \rangle = 0.50$ , $\langle L^2 \rangle = 0.34$	Xtriage
Outliers	2 of 12388 reflections (0.016%)	Xtriage
$F_o, F_c$ correlation	0.93	EDS
Total number of atoms	2692	wwPDB-VP
Average B, all atoms (Å <sup>2</sup> )	73.0	wwPDB-VP

Xtriage's analysis on translational NCS is as follows: *The largest off-origin peak in the Patterson function is 5.86% of the height of the origin peak. No significant pseudotranslation is detected.*

<sup>1</sup>Intensities estimated from amplitudes.

<sup>2</sup>Theoretical values of  $\langle |L| \rangle$ ,  $\langle L^2 \rangle$  for acentric reflections are 0.5, 0.375 respectively for untwinned datasets, and 0.333, 0.2 for perfectly twinned datasets.

## 5 Model quality

### 5.1 Standard geometry

Bond lengths and bond angles in the following residue types are not validated in this section: PTR, OKD

The Z score for a bond length (or angle) is the number of standard deviations the observed value is removed from the expected value. A bond length (or angle) with  $|Z| > 5$  is considered an outlier worth inspection. RMSZ is the root-mean-square of all Z scores of the bond lengths (or angles).

Mol	Chain	Bond lengths		Bond angles	
		RMSZ	$\# Z  > 5$	RMSZ	$\# Z  > 5$
1	A	0.39	0/2672	0.61	0/3633

There are no bond length outliers.

There are no bond angle outliers.

There are no chirality outliers.

There are no planarity outliers.

### 5.2 Too-close contacts

In the following table, the Non-H and H(model) columns list the number of non-hydrogen atoms and hydrogen atoms in the chain respectively. The H(added) column lists the number of hydrogen atoms added and optimized by MolProbity. The Clashes column lists the number of clashes within the asymmetric unit, whereas Symm-Clashes lists symmetry related clashes.

Mol	Chain	Non-H	H(model)	H(added)	Clashes	Symm-Clashes
1	A	2628	0	2647	110	0
2	A	23	0	11	0	0
3	A	41	0	0	5	0
All	All	2692	0	2658	110	0

The all-atom clashscore is defined as the number of clashes found per 1000 atoms (including hydrogen atoms). The all-atom clashscore for this structure is 21.

All (110) close contacts within the same asymmetric unit are listed below, sorted by their clash magnitude.

Atom-1	Atom-2	Interatomic distance (Å)	Clash overlap (Å)
1:A:337:HIS:HD2	1:A:339:PHE:H	1.23	0.85

*Continued on next page...*

*Continued from previous page...*

Atom-1	Atom-2	Interatomic distance (Å)	Clash overlap (Å)
1:A:39:THR:HG22	1:A:55:SER:OG	1.83	0.79
1:A:221:TYR:HD2	1:A:258:PRO:HA	1.48	0.78
1:A:257:PHE:HE1	1:A:272:VAL:HG21	1.48	0.77
1:A:77:ASP:HB3	3:A:602:HOH:O	1.84	0.76
1:A:111:ARG:HD3	1:A:133:ASP:OD2	1.85	0.75
1:A:276:PRO:HB2	1:A:281:ILE:CD1	2.18	0.73
1:A:153:LEU:HD12	1:A:154:PRO:HD2	1.69	0.73
1:A:89:GLN:HB2	3:A:605:HOH:O	1.91	0.71
1:A:221:TYR:CD2	1:A:258:PRO:HA	2.25	0.70
1:A:263:VAL:O	1:A:267:VAL:HG23	1.90	0.70
1:A:276:PRO:HB2	1:A:281:ILE:HD11	1.72	0.69
1:A:162:MET:HG3	1:A:247:LEU:HD13	1.74	0.67
1:A:221:TYR:HB3	1:A:257:PHE:O	1.94	0.67
1:A:98:LEU:O	1:A:102:ARG:HG3	1.95	0.67
1:A:84:ILE:HD13	1:A:131:VAL:HG22	1.79	0.64
1:A:370:ASN:ND2	1:A:373:LEU:HG	2.14	0.63
1:A:277:THR:HB	3:A:618:HOH:O	1.98	0.62
1:A:170:ALA:HB2	1:A:331:PRO:HB2	1.81	0.61
1:A:337:HIS:HD2	1:A:339:PHE:N	1.96	0.60
1:A:210:GLY:O	1:A:211:GLU:HG3	2.00	0.60
1:A:196:LEU:HD23	1:A:196:LEU:C	2.22	0.59
1:A:306:ARG:HG3	1:A:307:PRO:HD2	1.86	0.58
1:A:277:THR:O	1:A:281:ILE:HG12	2.02	0.58
1:A:319:ARG:HB3	1:A:329:LEU:HD13	1.86	0.56
1:A:224:ALA:HB1	1:A:226:GLU:OE2	2.05	0.56
1:A:42:ALA:HB1	1:A:114:TYR:HB3	1.88	0.56
1:A:337:HIS:CD2	1:A:339:PHE:H	2.13	0.55
1:A:88:LEU:HD23	1:A:127:TYR:CZ	2.41	0.55
1:A:281:ILE:HA	1:A:284:MET:CE	2.36	0.55
1:A:344:ARG:O	1:A:381:HIS:HE1	1.91	0.54
1:A:50:ARG:O	1:A:50:ARG:HG3	2.08	0.54
1:A:381:HIS:O	1:A:385:GLN:HB2	2.07	0.54
1:A:95:ASN:O	1:A:99:GLN:HG2	2.08	0.54
1:A:370:ASN:OD1	1:A:372:PRO:HG2	2.08	0.54
1:A:267:VAL:O	1:A:271:LYS:HG3	2.08	0.53
1:A:72:GLN:OE1	1:A:81:LEU:HD22	2.08	0.53
1:A:276:PRO:HG3	1:A:323:TYR:CE2	2.44	0.53
1:A:276:PRO:HB2	1:A:281:ILE:HD13	1.90	0.52
1:A:216:PTR:C	1:A:216:PTR:HD2	2.39	0.52
1:A:108:ASN:ND2	1:A:164:GLN:HB3	2.25	0.52
1:A:336:ALA:HB2	1:A:377:LEU:HD21	1.92	0.51

*Continued on next page...*



*Continued from previous page...*

Atom-1	Atom-2	Interatomic distance (Å)	Clash overlap (Å)
1:A:196:LEU:HD23	1:A:197:LYS:N	2.26	0.51
1:A:193:THR:O	1:A:194:ALA:HB3	2.11	0.51
1:A:170:ALA:HB2	1:A:331:PRO:CB	2.41	0.50
1:A:178:CYS:SG	1:A:238:ILE:HD11	2.51	0.50
1:A:307:PRO:O	1:A:308:ARG:HB2	2.12	0.50
1:A:266:LEU:O	1:A:266:LEU:HD23	2.12	0.50
1:A:281:ILE:HA	1:A:284:MET:HE2	1.94	0.49
1:A:179:HIS:O	1:A:180:ARG:HB2	2.12	0.49
1:A:235:THR:C	1:A:237:SER:H	2.16	0.48
1:A:330:THR:OG1	1:A:333:GLU:HG3	2.13	0.48
1:A:74:LYS:HG3	1:A:79:GLY:O	2.13	0.48
1:A:224:ALA:HA	1:A:241:TRP:CD1	2.49	0.48
1:A:91:LYS:HB2	3:A:606:HOH:O	2.13	0.48
1:A:60:LYS:O	1:A:62:ILE:HG23	2.15	0.47
1:A:379:PRO:HG2	1:A:382:ALA:HB2	1.96	0.47
1:A:106:HIS:CE1	1:A:108:ASN:HB2	2.50	0.47
1:A:264:ASP:O	1:A:268:GLU:HG2	2.16	0.46
1:A:100:ILE:O	1:A:104:LEU:HG	2.15	0.46
1:A:37:VAL:HG12	1:A:38:THR:N	2.30	0.46
1:A:309:THR:HB	1:A:314:ILE:HD11	1.97	0.46
1:A:270:ILE:HA	1:A:274:GLY:O	2.15	0.46
1:A:184:PRO:HD3	1:A:222:TYR:CZ	2.51	0.46
1:A:97:GLU:HB2	1:A:202:GLY:HA2	1.98	0.45
1:A:301:TRP:HZ3	1:A:305:PHE:HE1	1.63	0.45
1:A:119:SER:HA	1:A:125:GLU:O	2.15	0.45
1:A:350:LEU:HD12	1:A:351:PRO:HD2	1.98	0.45
1:A:39:THR:HG22	1:A:55:SER:CB	2.47	0.45
1:A:228:ILE:HG21	1:A:266:LEU:HD12	1.97	0.45
1:A:64:ASN:HD22	1:A:64:ASN:HA	1.56	0.45
1:A:269:ILE:O	1:A:273:LEU:HB2	2.17	0.45
1:A:375:THR:HA	1:A:383:ARG:HH22	1.82	0.45
1:A:276:PRO:HG3	1:A:323:TYR:CZ	2.52	0.45
1:A:272:VAL:HG23	1:A:273:LEU:N	2.31	0.44
1:A:69:VAL:HG22	1:A:71:TYR:CE1	2.54	0.43
1:A:189:LEU:CD2	1:A:189:LEU:N	2.81	0.43
1:A:90:ASP:OD2	1:A:92:ARG:HB2	2.19	0.43
1:A:148:ARG:HH11	1:A:148:ARG:HG2	1.83	0.43
1:A:235:THR:C	1:A:237:SER:N	2.72	0.43
1:A:221:TYR:CD1	1:A:221:TYR:N	2.87	0.42
1:A:269:ILE:HG23	1:A:273:LEU:HD12	2.01	0.42
1:A:350:LEU:HG	1:A:352:ASN:H	1.84	0.42

*Continued on next page...*

*Continued from previous page...*

Atom-1	Atom-2	Interatomic distance (Å)	Clash overlap (Å)
1:A:284:MET:HB2	1:A:284:MET:HE2	1.95	0.42
1:A:181:ASP:O	1:A:186:ASN:ND2	2.52	0.42
1:A:190:ASP:HB3	1:A:193:THR:OG1	2.19	0.42
1:A:115:PHE:HA	1:A:129:ASN:O	2.19	0.42
1:A:301:TRP:HZ3	1:A:305:PHE:CE1	2.37	0.42
1:A:169:LEU:HA	1:A:169:LEU:HD12	1.80	0.42
1:A:277:THR:OG1	1:A:280:GLN:HG3	2.20	0.42
1:A:189:LEU:O	1:A:189:LEU:HD23	2.20	0.42
1:A:155:VAL:HG12	1:A:159:LYS:HE3	2.01	0.42
1:A:277:THR:O	1:A:278:ARG:C	2.58	0.42
1:A:170:ALA:CB	1:A:331:PRO:HB2	2.47	0.42
1:A:180:ARG:NH2	3:A:633:HOH:O	2.44	0.42
1:A:63:GLY:O	1:A:69:VAL:HG23	2.20	0.42
1:A:175:PHE:O	1:A:206:GLN:NE2	2.48	0.41
1:A:153:LEU:HD12	1:A:154:PRO:CD	2.46	0.41
1:A:229:PHE:CZ	1:A:266:LEU:HD11	2.55	0.41
1:A:284:MET:SD	1:A:323:TYR:HD2	2.44	0.41
1:A:369:SER:O	1:A:370:ASN:HB2	2.21	0.41
1:A:266:LEU:O	1:A:270:ILE:HG13	2.20	0.41
1:A:58:ASP:O	1:A:60:LYS:HG3	2.21	0.41
1:A:275:THR:HA	1:A:276:PRO:HD3	1.82	0.40
1:A:178:CYS:SG	1:A:236:SER:HA	2.61	0.40
1:A:248:ALA:HB1	1:A:256:ILE:HD12	2.04	0.40
1:A:100:ILE:HG23	1:A:177:ILE:HD13	2.03	0.40
1:A:310:PRO:HA	1:A:311:PRO:HD3	1.88	0.40
1:A:306:ARG:HG3	1:A:307:PRO:CD	2.50	0.40
1:A:381:HIS:HA	1:A:384:ILE:HG12	2.04	0.40

There are no symmetry-related clashes.

## 5.3 Torsion angles [i](#)

### 5.3.1 Protein backbone [i](#)

In the following table, the Percentiles column shows the percent Ramachandran outliers of the chain as a percentile score with respect to all X-ray entries followed by that with respect to entries of similar resolution.

The Analysed column shows the number of residues for which the backbone conformation was analysed, and the total number of residues.

Mol	Chain	Analysed	Favoured	Allowed	Outliers	Percentiles	
1	A	321/382 (84%)	286 (89%)	31 (10%)	4 (1%)	16	33

All (4) Ramachandran outliers are listed below:

Mol	Chain	Res	Type
1	A	358	ALA
1	A	354	ARG
1	A	69	VAL
1	A	370	ASN

### 5.3.2 Protein sidechains ⓘ

In the following table, the Percentiles column shows the percent sidechain outliers of the chain as a percentile score with respect to all X-ray entries followed by that with respect to entries of similar resolution.

The Analysed column shows the number of residues for which the sidechain conformation was analysed, and the total number of residues.

Mol	Chain	Analysed	Rotameric	Outliers	Percentiles	
1	A	290/335 (87%)	270 (93%)	20 (7%)	19	38

All (20) residues with a non-rotameric sidechain are listed below:

Mol	Chain	Res	Type
1	A	36	LYS
1	A	64	ASN
1	A	72	GLN
1	A	84	ILE
1	A	89	GLN
1	A	125	GLU
1	A	132	LEU
1	A	169	LEU
1	A	189	LEU
1	A	198	LEU
1	A	221	TYR
1	A	226	GLU
1	A	260	ASP
1	A	275	THR
1	A	284	MET
1	A	301	TRP
1	A	306	ARG

*Continued on next page...*

*Continued from previous page...*

Mol	Chain	Res	Type
1	A	312	GLU
1	A	369	SER
1	A	385	GLN

Some sidechains can be flipped to improve hydrogen bonding and reduce clashes. All (6) such sidechains are listed below:

Mol	Chain	Res	Type
1	A	64	ASN
1	A	72	GLN
1	A	265	GLN
1	A	337	HIS
1	A	347	ASN
1	A	381	HIS

### 5.3.3 RNA ⓘ

There are no RNA molecules in this entry.

## 5.4 Non-standard residues in protein, DNA, RNA chains ⓘ

1 non-standard protein/DNA/RNA residue is modelled in this entry.

In the following table, the Counts columns list the number of bonds (or angles) for which Mogul statistics could be retrieved, the number of bonds (or angles) that are observed in the model and the number of bonds (or angles) that are defined in the chemical component dictionary. The Link column lists molecule types, if any, to which the group is linked. The Z score for a bond length (or angle) is the number of standard deviations the observed value is removed from the expected value. A bond length (or angle) with  $|Z| > 2$  is considered an outlier worth inspection. RMSZ is the root-mean-square of all Z scores of the bond lengths (or angles).

Mol	Type	Chain	Res	Link	Bond lengths			Bond angles		
					Counts	RMSZ	$\# Z  > 2$	Counts	RMSZ	$\# Z  > 2$
1	PTR	A	216	1	14,16,17	1.15	1 (7%)	18,22,24	0.61	0

In the following table, the Chirals column lists the number of chiral outliers, the number of chiral centers analysed, the number of these observed in the model and the number defined in the chemical component dictionary. Similar counts are reported in the Torsion and Rings columns. '-' means no outliers of that kind were identified.

Mol	Type	Chain	Res	Link	Chirals	Torsions	Rings
1	PTR	A	216	1	-	0/9/11/13	0/1/1/1

All (1) bond length outliers are listed below:

Mol	Chain	Res	Type	Atoms	Z	Observed(Å)	Ideal(Å)
1	A	216	PTR	P-O1P	2.28	1.58	1.51

There are no bond angle outliers.

There are no chirality outliers.

There are no torsion outliers.

There are no ring outliers.

1 monomer is involved in 1 short contact:

Mol	Chain	Res	Type	Clashes	Symm-Clashes
1	A	216	PTR	1	0

## 5.5 Carbohydrates [i](#)

There are no carbohydrates in this entry.

## 5.6 Ligand geometry [i](#)

1 ligand is modelled in this entry.

In the following table, the Counts columns list the number of bonds (or angles) for which Mogul statistics could be retrieved, the number of bonds (or angles) that are observed in the model and the number of bonds (or angles) that are defined in the chemical component dictionary. The Link column lists molecule types, if any, to which the group is linked. The Z score for a bond length (or angle) is the number of standard deviations the observed value is removed from the expected value. A bond length (or angle) with  $|Z| > 2$  is considered an outlier worth inspection. RMSZ is the root-mean-square of all Z scores of the bond lengths (or angles).

Mol	Type	Chain	Res	Link	Bond lengths			Bond angles		
					Counts	RMSZ	$\# Z  > 2$	Counts	RMSZ	$\# Z  > 2$
2	0KD	A	501	-	24,26,26	2.31	9 (37%)	22,36,36	1.39	2 (9%)

In the following table, the Chirals column lists the number of chiral outliers, the number of chiral centers analysed, the number of these observed in the model and the number defined in the chemical component dictionary. Similar counts are reported in the Torsion and Rings columns. '-' means no outliers of that kind were identified.

Mol	Type	Chain	Res	Link	Chirals	Torsions	Rings
2	0KD	A	501	-	-	0/8/12/12	0/4/4/4

All (9) bond length outliers are listed below:

Mol	Chain	Res	Type	Atoms	Z	Observed(Å)	Ideal(Å)
2	A	501	0KD	C6-N10	-4.46	1.30	1.35
2	A	501	0KD	C15-N16	2.05	1.41	1.35
2	A	501	0KD	C13-C12	2.17	1.43	1.38
2	A	501	0KD	C19-C18	2.26	1.43	1.38
2	A	501	0KD	C22-C17	3.16	1.45	1.39
2	A	501	0KD	C13-C14	3.54	1.43	1.37
2	A	501	0KD	C18-C17	3.84	1.45	1.39
2	A	501	0KD	C4-C5	4.39	1.39	1.37
2	A	501	0KD	C9-N10	4.55	1.43	1.38

All (2) bond angle outliers are listed below:

Mol	Chain	Res	Type	Atoms	Z	Observed(°)	Ideal(°)
2	A	501	0KD	C13-C14-C9	-4.23	114.00	118.71
2	A	501	0KD	C12-N11-C8	-2.85	112.76	116.44

There are no chirality outliers.

There are no torsion outliers.

There are no ring outliers.

No monomer is involved in short contacts.

## 5.7 Other polymers [i](#)

There are no such residues in this entry.

## 5.8 Polymer linkage issues [i](#)

There are no chain breaks in this entry.

## 6 Fit of model and data

### 6.1 Protein, DNA and RNA chains

In the following table, the column labelled ‘#RSRZ> 2’ contains the number (and percentage) of RSRZ outliers, followed by percent RSRZ outliers for the chain as percentile scores relative to all X-ray entries and entries of similar resolution. The OWAB column contains the minimum, median, 95<sup>th</sup> percentile and maximum values of the occupancy-weighted average B-factor per residue. The column labelled ‘Q< 0.9’ lists the number of (and percentage) of residues with an average occupancy less than 0.9.

Mol	Chain	Analysed	<RSRZ>	#RSRZ>2	OWAB(Å <sup>2</sup> )	Q<0.9
1	A	328/382 (85%)	0.36	19 (5%) 26 20	40, 70, 114, 124	0

All (19) RSRZ outliers are listed below:

Mol	Chain	Res	Type	RSRZ
1	A	212	PRO	6.9
1	A	275	THR	4.6
1	A	284	MET	4.4
1	A	384	ILE	3.9
1	A	276	PRO	3.8
1	A	229	PHE	3.7
1	A	303	LYS	3.6
1	A	67	PHE	3.6
1	A	125	GLU	3.6
1	A	66	SER	2.7
1	A	263	VAL	2.7
1	A	230	GLY	2.6
1	A	35	SER	2.6
1	A	274	GLY	2.4
1	A	77	ASP	2.3
1	A	385	GLN	2.3
1	A	279	GLU	2.2
1	A	308	ARG	2.1
1	A	282	ARG	2.0

### 6.2 Non-standard residues in protein, DNA, RNA chains

In the following table, the Atoms column lists the number of modelled atoms in the group and the number defined in the chemical component dictionary. LLDF column lists the quality of electron density of the group with respect to its neighbouring residues in protein, DNA or RNA chains. The B-factors column lists the minimum, median, 95<sup>th</sup> percentile and maximum values of B factors

of atoms in the group. The column labelled 'Q< 0.9' lists the number of atoms with occupancy less than 0.9.

Mol	Type	Chain	Res	Atoms	RSCC	RSR	LLDF	B-factors( $\text{\AA}^2$ )	Q<0.9
1	PTR	A	216	16/17	0.96	0.20	-	59,69,80,83	0

### 6.3 Carbohydrates [i](#)

There are no carbohydrates in this entry.

### 6.4 Ligands [i](#)

In the following table, the Atoms column lists the number of modelled atoms in the group and the number defined in the chemical component dictionary. LLDF column lists the quality of electron density of the group with respect to its neighbouring residues in protein, DNA or RNA chains. The B-factors column lists the minimum, median, 95<sup>th</sup> percentile and maximum values of B factors of atoms in the group. The column labelled 'Q< 0.9' lists the number of atoms with occupancy less than 0.9.

Mol	Type	Chain	Res	Atoms	RSCC	RSR	LLDF	B-factors( $\text{\AA}^2$ )	Q<0.9
2	0KD	A	501	23/23	0.95	0.21	1.00	61,63,64,67	0

### 6.5 Other polymers [i](#)

There are no such residues in this entry.