



# Full wwPDB X-ray Structure Validation Report ⓘ

Feb 19, 2016 – 10:30 PM GMT

PDB ID : 5DI1  
Title : MAP4K4 in complex with an inhibitor  
Authors : Liu, S.  
Deposited on : 2015-08-31  
Resolution : 2.90 Å(reported)

This is a Full wwPDB X-ray Structure Validation Report for a publicly released PDB entry.  
We welcome your comments at [validation@mail.wwpdb.org](mailto:validation@mail.wwpdb.org)  
A user guide is available at  
<http://wwpdb.org/validation/2016/XrayValidationReportHelp>  
with specific help available everywhere you see the ⓘ symbol.

---

The following versions of software and data (see [references ⓘ](#)) were used in the production of this report:

MolProbity : 4.02b-467  
Mogul : 1.7.1 (RC1), CSD as537be (2016)  
Xtriage (Phenix) : 1.9-1692  
EDS : rb-20026982  
Percentile statistics : 20151230.v01 (using entries in the PDB archive December 30th 2015)  
Refmac : 5.8.0135  
CCP4 : 6.5.0  
Ideal geometry (proteins) : Engh & Huber (2001)  
Ideal geometry (DNA, RNA) : Parkinson et al. (1996)  
Validation Pipeline (wwPDB-VP) : rb-20026982

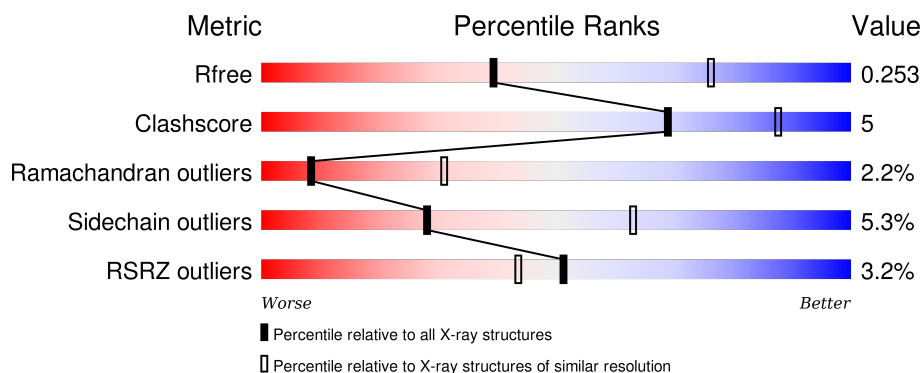
# 1 Overall quality at a glance

The following experimental techniques were used to determine the structure:

## *X-RAY DIFFRACTION*

The reported resolution of this entry is 2.90 Å.

Percentile scores (ranging between 0-100) for global validation metrics of the entry are shown in the following graphic. The table shows the number of entries on which the scores are based.



Metric	Whole archive (#Entries)	Similar resolution (#Entries, resolution range(Å))
$R_{free}$	91344	1451 (2.90-2.90)
Clashscore	102246	1668 (2.90-2.90)
Ramachandran outliers	100387	1630 (2.90-2.90)
Sidechain outliers	100360	1632 (2.90-2.90)
RSRZ outliers	91569	1456 (2.90-2.90)

The table below summarises the geometric issues observed across the polymeric chains and their fit to the electron density. The red, orange, yellow and green segments on the lower bar indicate the fraction of residues that contain outliers for  $\geq 3$ , 2, 1 and 0 types of geometric quality criteria. A grey segment represents the fraction of residues that are not modelled. The numeric value for each fraction is indicated below the corresponding segment, with a dot representing fractions  $\leq 5\%$ . The upper red bar (where present) indicates the fraction of residues that have poor fit to the electron density. The numeric value is given above the bar.

Mol	Chain	Length	Quality of chain
1	A	310	
1	B	310	

## 2 Entry composition [i](#)

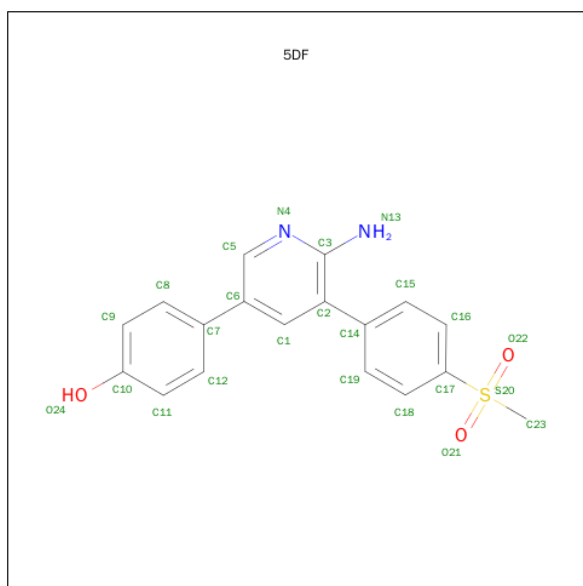
There are 3 unique types of molecules in this entry. The entry contains 4789 atoms, of which 16 are hydrogens and 0 are deuteriums.

In the tables below, the ZeroOcc column contains the number of atoms modelled with zero occupancy, the AltConf column contains the number of residues with at least one atom in alternate conformation and the Trace column contains the number of residues modelled with at most 2 atoms.

- Molecule 1 is a protein called Mitogen-activated protein kinase kinase kinase kinase 4.

Mol	Chain	Residues	Atoms					ZeroOcc	AltConf	Trace
1	A	285	Total	C	N	O	S	0	0	0
			2299	1467	401	418	13			
1	B	300	Total	C	N	O	S	0	0	0
			2415	1537	426	439	13			

- Molecule 2 is 4-{6-amino-5-[4-(methylsulfonyl)phenyl]pyridin-3-yl}phenol (three-letter code: 5DF) (formula: C<sub>18</sub>H<sub>16</sub>N<sub>2</sub>O<sub>3</sub>S).



Mol	Chain	Residues	Atoms					ZeroOcc	AltConf
2	A	1	Total	C	H	N	O	16	0
			40	18	16	2	3		

- Molecule 3 is water.

Mol	Chain	Residues	Atoms		ZeroOcc	AltConf
3	A	15	Total	O	0	0
			15	15		

*Continued on next page...*

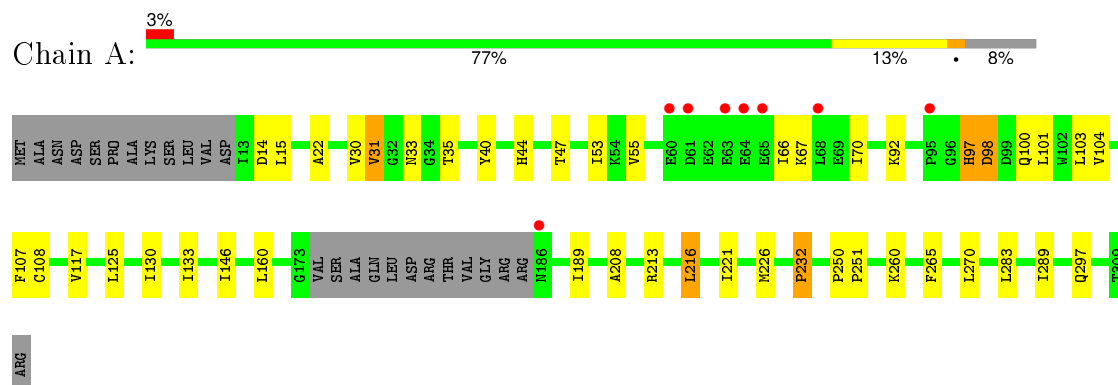
*Continued from previous page...*

Mol	Chain	Residues	Atoms		ZeroOcc	AltConf
3	B	20	Total	O	0	0
			20	20		

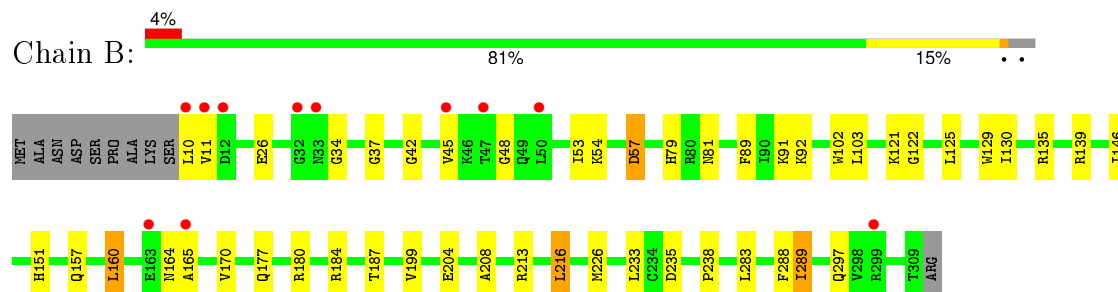
### 3 Residue-property plots [i](#)

These plots are drawn for all protein, RNA and DNA chains in the entry. The first graphic for a chain summarises the proportions of errors displayed in the second graphic. The second graphic shows the sequence view annotated by issues in geometry and electron density. Residues are color-coded according to the number of geometric quality criteria for which they contain at least one outlier: green = 0, yellow = 1, orange = 2 and red = 3 or more. A red dot above a residue indicates a poor fit to the electron density ( $\text{RSRZ} > 2$ ). Stretches of 2 or more consecutive residues without any outlier are shown as a green connector. Residues present in the sample, but not in the model, are shown in grey.

- Molecule 1: Mitogen-activated protein kinase kinase kinase kinase 4



- Molecule 1: Mitogen-activated protein kinase kinase kinase kinase 4



## 4 Data and refinement statistics

Property	Value	Source
Space group	P 21 21 21	Depositor
Cell constants a, b, c, $\alpha$ , $\beta$ , $\gamma$	80.60Å 91.74Å 96.62Å 90.00° 90.00° 90.00°	Depositor
Resolution (Å)	41.44 – 2.90 41.44 – 2.90	Depositor EDS
% Data completeness (in resolution range)	93.9 (41.44-2.90) 93.4 (41.44-2.90)	Depositor EDS
$R_{merge}$	0.11	Depositor
$R_{sym}$	(Not available)	Depositor
$\langle I/\sigma(I) \rangle$ <sup>1</sup>	2.85 (at 2.90Å)	Xtriage
Refinement program	BUSTER 2.9.5	Depositor
R, $R_{free}$	0.198 , 0.249 0.205 , 0.253	Depositor DCC
$R_{free}$ test set	756 reflections (5.17%)	DCC
Wilson B-factor (Å <sup>2</sup> )	58.5	Xtriage
Anisotropy	0.273	Xtriage
Bulk solvent $k_{sol}$ (e/Å <sup>3</sup> ), $B_{sol}$ (Å <sup>2</sup> )	0.29 , 42.6	EDS
Estimated twinning fraction	0.016 for -h,l,k	Xtriage
L-test for twinning <sup>2</sup>	$\langle  L  \rangle = 0.50$ , $\langle L^2 \rangle = 0.34$	Xtriage
Outliers	0 of 15445 reflections	Xtriage
$F_o, F_c$ correlation	0.93	EDS
Total number of atoms	4789	wwPDB-VP
Average B, all atoms (Å <sup>2</sup> )	65.0	wwPDB-VP

Xtriage's analysis on translational NCS is as follows: *The largest off-origin peak in the Patterson function is 4.45% of the height of the origin peak. No significant pseudotranslation is detected.*

<sup>1</sup>Intensities estimated from amplitudes.

<sup>2</sup>Theoretical values of  $\langle |L| \rangle$ ,  $\langle L^2 \rangle$  for acentric reflections are 0.5, 0.375 respectively for untwinned datasets, and 0.333, 0.2 for perfectly twinned datasets.

## 5 Model quality [i](#)

### 5.1 Standard geometry [i](#)

Bond lengths and bond angles in the following residue types are not validated in this section: 5DF

The Z score for a bond length (or angle) is the number of standard deviations the observed value is removed from the expected value. A bond length (or angle) with  $|Z| > 5$  is considered an outlier worth inspection. RMSZ is the root-mean-square of all Z scores of the bond lengths (or angles).

Mol	Chain	Bond lengths		Bond angles	
		RMSZ	# $ Z  > 5$	RMSZ	# $ Z  > 5$
1	A	0.51	0/2355	0.77	1/3186 (0.0%)
1	B	0.51	0/2472	0.77	0/3346
All	All	0.51	0/4827	0.77	1/6532 (0.0%)

There are no bond length outliers.

All (1) bond angle outliers are listed below:

Mol	Chain	Res	Type	Atoms	Z	Observed(°)	Ideal(°)
1	A	232	PRO	N-CA-C	5.00	125.11	112.10

There are no chirality outliers.

There are no planarity outliers.

### 5.2 Too-close contacts [i](#)

In the following table, the Non-H and H(model) columns list the number of non-hydrogen atoms and hydrogen atoms in the chain respectively. The H(added) column lists the number of hydrogen atoms added and optimized by MolProbity. The Clashes column lists the number of clashes within the asymmetric unit, whereas Symm-Clashes lists symmetry related clashes.

Mol	Chain	Non-H	H(model)	H(added)	Clashes	Symm-Clashes
1	A	2299	0	2289	28	0
1	B	2415	0	2411	20	0
2	A	24	16	15	1	0
3	A	15	0	0	0	0
3	B	20	0	0	0	0
All	All	4773	16	4715	43	0

The all-atom clashscore is defined as the number of clashes found per 1000 atoms (including

hydrogen atoms). The all-atom clashscore for this structure is 5.

All (43) close contacts within the same asymmetric unit are listed below, sorted by their clash magnitude.

Atom-1	Atom-2	Interatomic distance (Å)	Clash overlap (Å)
1:B:79:HIS:HD2	1:B:81:ASN:H	1.20	0.85
1:A:189:ILE:HG13	1:B:238:PRO:HB2	1.72	0.71
1:A:265:PHE:CD1	1:A:289:ILE:HD11	2.27	0.70
1:B:79:HIS:CD2	1:B:81:ASN:H	2.09	0.66
1:B:160:LEU:HD11	1:B:170:VAL:HG22	1.78	0.64
1:B:151:HIS:HE1	1:B:170:VAL:O	1.86	0.59
1:A:31:VAL:HG21	1:A:107:PHE:HE1	1.69	0.57
1:A:117:VAL:HG12	1:A:125:LEU:HD13	1.87	0.57
1:A:70:ILE:HG12	1:A:103:LEU:HD21	1.88	0.55
1:A:130:ILE:HA	1:A:226:MET:CE	2.37	0.54
1:A:216:LEU:HG	1:A:283:LEU:HD12	1.88	0.54
1:B:130:ILE:HG12	1:B:226:MET:HB3	1.90	0.53
1:A:55:VAL:HG11	1:A:100:GLN:HE21	1.75	0.52
1:B:213:ARG:HA	1:B:216:LEU:HD22	1.90	0.52
1:B:125:LEU:HD22	1:B:129:TRP:CE3	2.45	0.52
1:A:265:PHE:CE1	1:A:289:ILE:HD11	2.45	0.52
1:A:44:HIS:HD2	1:A:47:THR:H	1.58	0.51
1:A:130:ILE:HA	1:A:226:MET:HE1	1.93	0.50
1:B:177:GLN:HE22	1:B:180:ARG:HH11	1.60	0.49
1:B:42:GLY:HA3	1:B:53:ILE:HD12	1.94	0.49
1:A:14:ASP:HA	1:A:67:LYS:HE2	1.96	0.48
1:A:30:VAL:HB	1:B:34:GLY:HA3	1.95	0.48
1:A:33:ASN:OD1	1:B:57:ASP:HB2	2.16	0.46
1:A:33:ASN:HB3	1:B:184:ARG:HG3	1.97	0.46
1:B:54:LYS:HB3	1:B:103:LEU:HB2	2.00	0.44
1:A:30:VAL:HG22	1:A:40:TYR:CE1	2.53	0.44
1:A:250:PRO:HA	1:A:251:PRO:HD3	1.93	0.43
1:A:213:ARG:HA	1:A:216:LEU:HD22	1.99	0.43
1:A:130:ILE:HG12	1:A:226:MET:HE2	2.01	0.42
1:B:89:PHE:HB2	1:B:102:TRP:HB2	2.00	0.42
1:B:288:PHE:CD2	1:B:289:ILE:HD12	2.54	0.42
1:A:221:ILE:HG23	1:A:232:PRO:HD2	2.02	0.42
1:B:216:LEU:HG	1:B:283:LEU:HD12	2.01	0.42
1:A:108:CYS:O	2:A:4000:5DF:H26	2.20	0.42
1:A:125:LEU:HD23	1:A:226:MET:HE3	2.02	0.42
1:A:251:PRO:HD2	1:A:270:LEU:HD13	2.01	0.42
1:A:133:ILE:HB	1:A:226:MET:HE1	2.02	0.41
1:A:31:VAL:HG21	1:A:107:PHE:CE1	2.52	0.41

*Continued on next page...*



Continued from previous page...

Atom-1	Atom-2	Interatomic distance (Å)	Clash overlap (Å)
1:B:135:ARG:HE	1:B:139:ARG:CZ	2.35	0.40
1:B:125:LEU:HD22	1:B:129:TRP:HE3	1.86	0.40
1:A:53:ILE:HG12	1:A:104:VAL:HG22	2.04	0.40
1:A:189:ILE:CG1	1:B:238:PRO:HB2	2.47	0.40
1:A:97:HIS:HD2	1:A:98:ASP:HB2	1.86	0.40

There are no symmetry-related clashes.

## 5.3 Torsion angles

### 5.3.1 Protein backbone

In the following table, the Percentiles column shows the percent Ramachandran outliers of the chain as a percentile score with respect to all X-ray entries followed by that with respect to entries of similar resolution.

The Analysed column shows the number of residues for which the backbone conformation was analysed, and the total number of residues.

Mol	Chain	Analysed	Favoured	Allowed	Outliers	Percentiles	
1	A	281/310 (91%)	261 (93%)	17 (6%)	3 (1%)	17	51
1	B	298/310 (96%)	267 (90%)	21 (7%)	10 (3%)	5	19
All	All	579/620 (93%)	528 (91%)	38 (7%)	13 (2%)	8	31

All (13) Ramachandran outliers are listed below:

Mol	Chain	Res	Type
1	A	22	ALA
1	A	208	ALA
1	B	121	LYS
1	B	208	ALA
1	B	37	GLY
1	B	45	VAL
1	B	48	GLY
1	B	92	LYS
1	A	97	HIS
1	B	165	ALA
1	B	204	GLU
1	B	11	VAL
1	B	122	GLY

### 5.3.2 Protein sidechains ⓘ

In the following table, the Percentiles column shows the percent sidechain outliers of the chain as a percentile score with respect to all X-ray entries followed by that with respect to entries of similar resolution.

The Analysed column shows the number of residues for which the sidechain conformation was analysed, and the total number of residues.

Mol	Chain	Analysed	Rotameric	Outliers	Percentiles	
1	A	251/272 (92%)	239 (95%)	12 (5%)	31	67
1	B	263/272 (97%)	248 (94%)	15 (6%)	25	59
All	All	514/544 (94%)	487 (95%)	27 (5%)	28	63

All (27) residues with a non-rotameric sidechain are listed below:

Mol	Chain	Res	Type
1	A	15	LEU
1	A	31	VAL
1	A	35	THR
1	A	66	ILE
1	A	92	LYS
1	A	98	ASP
1	A	101	LEU
1	A	146	ILE
1	A	160	LEU
1	A	216	LEU
1	A	260	LYS
1	A	297	GLN
1	B	10	LEU
1	B	26	GLU
1	B	57	ASP
1	B	91	LYS
1	B	146	ILE
1	B	157	GLN
1	B	160	LEU
1	B	164	ASN
1	B	187	THR
1	B	199	VAL
1	B	216	LEU
1	B	233	LEU
1	B	235	ASP
1	B	289	ILE
1	B	297	GLN

Some sidechains can be flipped to improve hydrogen bonding and reduce clashes. All (9) such sidechains are listed below:

Mol	Chain	Res	Type
1	A	38	GLN
1	A	44	HIS
1	A	97	HIS
1	A	100	GLN
1	B	79	HIS
1	B	97	HIS
1	B	147	HIS
1	B	151	HIS
1	B	177	GLN

### 5.3.3 RNA [i](#)

There are no RNA molecules in this entry.

## 5.4 Non-standard residues in protein, DNA, RNA chains [i](#)

There are no non-standard protein/DNA/RNA residues in this entry.

## 5.5 Carbohydrates [i](#)

There are no carbohydrates in this entry.

## 5.6 Ligand geometry [i](#)

1 ligand is modelled in this entry.

In the following table, the Counts columns list the number of bonds (or angles) for which Mogul statistics could be retrieved, the number of bonds (or angles) that are observed in the model and the number of bonds (or angles) that are defined in the chemical component dictionary. The Link column lists molecule types, if any, to which the group is linked. The Z score for a bond length (or angle) is the number of standard deviations the observed value is removed from the expected value. A bond length (or angle) with  $|Z| > 2$  is considered an outlier worth inspection. RMSZ is the root-mean-square of all Z scores of the bond lengths (or angles).

Mol	Type	Chain	Res	Link	Bond lengths			Bond angles		
					Counts	RMSZ	$\# Z  > 2$	Counts	RMSZ	$\# Z  > 2$
2	5DF	A	4000	-	26,26,26	0.88	1 (3%)	35,38,38	1.45	4 (11%)

In the following table, the Chirals column lists the number of chiral outliers, the number of chiral

centers analysed, the number of these observed in the model and the number defined in the chemical component dictionary. Similar counts are reported in the Torsion and Rings columns. '-' means no outliers of that kind were identified.

Mol	Type	Chain	Res	Link	Chirals	Torsions	Rings
2	5DF	A	4000	-	-	0/14/14/14	0/3/3/3

All (1) bond length outliers are listed below:

Mol	Chain	Res	Type	Atoms	Z	Observed(Å)	Ideal(Å)
2	A	4000	5DF	C3-N13	2.06	1.39	1.34

All (4) bond angle outliers are listed below:

Mol	Chain	Res	Type	Atoms	Z	Observed(°)	Ideal(°)
2	A	4000	5DF	O21-S20-C17	-4.85	104.06	108.29
2	A	4000	5DF	O22-S20-C17	-3.74	105.03	108.29
2	A	4000	5DF	C6-C5-N4	-2.12	120.87	124.31
2	A	4000	5DF	C5-N4-C3	3.18	122.72	118.78

There are no chirality outliers.

There are no torsion outliers.

There are no ring outliers.

1 monomer is involved in 1 short contact:

Mol	Chain	Res	Type	Clashes	Symm-Clashes
2	A	4000	5DF	1	0

## 5.7 Other polymers [i](#)

There are no such residues in this entry.

## 5.8 Polymer linkage issues [i](#)

There are no chain breaks in this entry.

## 6 Fit of model and data [i](#)

### 6.1 Protein, DNA and RNA chains [i](#)

In the following table, the column labelled ‘#RSRZ> 2’ contains the number (and percentage) of RSRZ outliers, followed by percent RSRZ outliers for the chain as percentile scores relative to all X-ray entries and entries of similar resolution. The OWAB column contains the minimum, median, 95<sup>th</sup> percentile and maximum values of the occupancy-weighted average B-factor per residue. The column labelled ‘Q< 0.9’ lists the number of (and percentage) of residues with an average occupancy less than 0.9.

Mol	Chain	Analysed	<RSRZ>	#RSRZ>2	OWAB(Å <sup>2</sup> )	Q<0.9
1	A	285/310 (91%)	-0.07	8 (2%) 56 50	33, 55, 108, 145	0
1	B	300/310 (96%)	0.06	11 (3%) 45 38	36, 63, 103, 132	0
All	All	585/620 (94%)	-0.00	19 (3%) 51 43	33, 60, 104, 145	0

All (19) RSRZ outliers are listed below:

Mol	Chain	Res	Type	RSRZ
1	A	64	GLU	5.2
1	A	60	GLU	4.8
1	A	61	ASP	4.4
1	B	12	ASP	3.9
1	A	65	GLU	3.7
1	A	63	GLU	3.3
1	B	47	THR	3.2
1	B	11	VAL	3.0
1	B	165	ALA	2.9
1	A	186	ASN	2.8
1	B	33	ASN	2.6
1	B	163	GLU	2.5
1	A	95	PRO	2.5
1	B	299	ARG	2.4
1	B	45	VAL	2.4
1	B	50	LEU	2.3
1	A	68	LEU	2.3
1	B	10	LEU	2.2
1	B	32	GLY	2.1

### 6.2 Non-standard residues in protein, DNA, RNA chains [i](#)

There are no non-standard protein/DNA/RNA residues in this entry.

### 6.3 Carbohydrates [i](#)

There are no carbohydrates in this entry.

### 6.4 Ligands [i](#)

In the following table, the Atoms column lists the number of modelled atoms in the group and the number defined in the chemical component dictionary. LLDF column lists the quality of electron density of the group with respect to its neighbouring residues in protein, DNA or RNA chains. The B-factors column lists the minimum, median, 95<sup>th</sup> percentile and maximum values of B factors of atoms in the group. The column labelled 'Q< 0.9' lists the number of atoms with occupancy less than 0.9.

Mol	Type	Chain	Res	Atoms	RSCC	RSR	LLDF	B-factors( $\text{\AA}^2$ )	Q<0.9
2	5DF	A	4000	24/24	0.98	0.16	-0.29	45,49,54,56	16

### 6.5 Other polymers [i](#)

There are no such residues in this entry.