



Full wwPDB X-ray Structure Validation Report ⓘ

Feb 19, 2016 – 10:46 PM GMT

PDB ID : 5DIF
Title : Crystal Structure of CPEB4 NES Peptide in complex with CRM1-Ran-RanBP1
Authors : Fung, H.Y.; Chook, Y.M.
Deposited on : 2015-08-31
Resolution : 2.09 Å(reported)

This is a Full wwPDB X-ray Structure Validation Report for a publicly released PDB entry.
We welcome your comments at validation@mail.wwpdb.org
A user guide is available at
<http://wwpdb.org/validation/2016/XrayValidationReportHelp>
with specific help available everywhere you see the ⓘ symbol.

The following versions of software and data (see [references ⓘ](#)) were used in the production of this report:

MolProbity : 4.02b-467
Mogul : 1.7.1 (RC1), CSD as537be (2016)
Xtriage (Phenix) : 1.9-1692
EDS : rb-20026982
Percentile statistics : 20151230.v01 (using entries in the PDB archive December 30th 2015)
Refmac : 5.8.0135
CCP4 : 6.5.0
Ideal geometry (proteins) : Engh & Huber (2001)
Ideal geometry (DNA, RNA) : Parkinson et al. (1996)
Validation Pipeline (wwPDB-VP) : rb-20026982

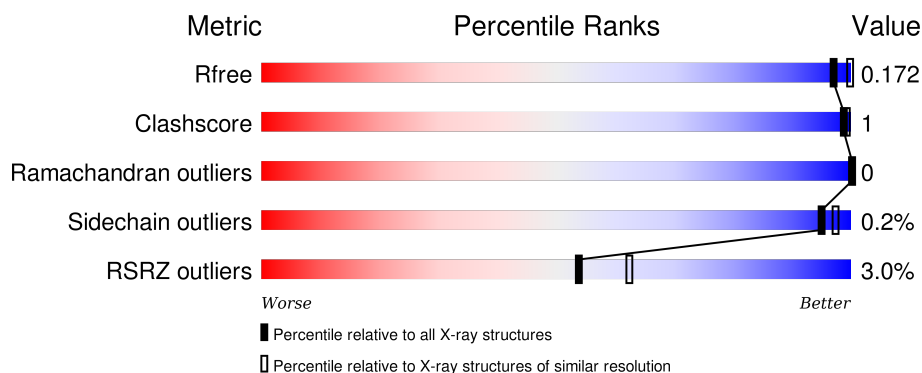
1 Overall quality at a glance

The following experimental techniques were used to determine the structure:

X-RAY DIFFRACTION

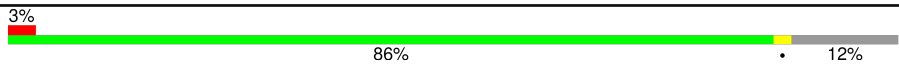
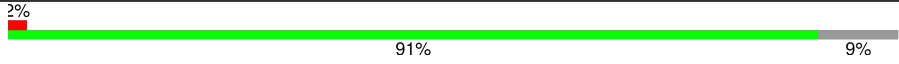
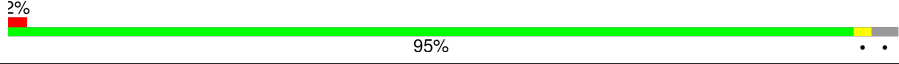

The reported resolution of this entry is 2.09 Å.

Percentile scores (ranging between 0-100) for global validation metrics of the entry are shown in the following graphic. The table shows the number of entries on which the scores are based.



Metric	Whole archive (#Entries)	Similar resolution (#Entries, resolution range(Å))
R_{free}	91344	3939 (2.10-2.10)
Clashscore	102246	4460 (2.10-2.10)
Ramachandran outliers	100387	4413 (2.10-2.10)
Sidechain outliers	100360	4414 (2.10-2.10)
RSRZ outliers	91569	3948 (2.10-2.10)

The table below summarises the geometric issues observed across the polymeric chains and their fit to the electron density. The red, orange, yellow and green segments on the lower bar indicate the fraction of residues that contain outliers for ≥ 3 , 2, 1 and 0 types of geometric quality criteria. A grey segment represents the fraction of residues that are not modelled. The numeric value for each fraction is indicated below the corresponding segment, with a dot representing fractions $\leq 5\%$. The upper red bar (where present) indicates the fraction of residues that have poor fit to the electron density. The numeric value is given above the bar.

Mol	Chain	Length	Quality of chain
1	A	237	
2	B	143	
3	C	1024	
4	D	19	

The following table lists non-polymeric compounds, carbohydrate monomers and non-standard

residues in protein, DNA, RNA chains that are outliers for geometric or electron-density-fit criteria:

Mol	Type	Chain	Res	Chirality	Geometry	Clashes	Electron density
7	GOL	A	303	-	-	-	X
7	GOL	C	1105	-	-	-	X
7	GOL	C	1107	-	-	-	X

2 Entry composition

There are 9 unique types of molecules in this entry. The entry contains 11972 atoms, of which 0 are hydrogens and 0 are deuteriums.

In the tables below, the ZeroOcc column contains the number of atoms modelled with zero occupancy, the AltConf column contains the number of residues with at least one atom in alternate conformation and the Trace column contains the number of residues modelled with at most 2 atoms.

- Molecule 1 is a protein called GTP-binding nuclear protein Ran.

Mol	Chain	Residues	Atoms					ZeroOcc	AltConf	Trace
1	A	209	Total	C	N	O	S	0	4	0
			1711	1103	294	307	7			

There are 21 discrepancies between the modelled and reference sequences:

Chain	Residue	Modelled	Actual	Comment	Reference
A	-20	MET	-	initiating methionine	UNP P62826
A	-19	GLU	-	expression tag	UNP P62826
A	-18	THR	-	expression tag	UNP P62826
A	-17	GLY	-	expression tag	UNP P62826
A	-16	SER	-	expression tag	UNP P62826
A	-15	SER	-	expression tag	UNP P62826
A	-14	HIS	-	expression tag	UNP P62826
A	-13	HIS	-	expression tag	UNP P62826
A	-12	HIS	-	expression tag	UNP P62826
A	-11	HIS	-	expression tag	UNP P62826
A	-10	HIS	-	expression tag	UNP P62826
A	-9	HIS	-	expression tag	UNP P62826
A	-8	SER	-	expression tag	UNP P62826
A	-7	SER	-	expression tag	UNP P62826
A	-6	GLY	-	expression tag	UNP P62826
A	-5	LEU	-	expression tag	UNP P62826
A	-4	PRO	-	expression tag	UNP P62826
A	-3	ARG	-	expression tag	UNP P62826
A	-2	GLY	-	expression tag	UNP P62826
A	-1	SER	-	expression tag	UNP P62826
A	0	HIS	-	expression tag	UNP P62826

- Molecule 2 is a protein called Ran-specific GTPase-activating protein 1.

Mol	Chain	Residues	Atoms					ZeroOcc	AltConf	Trace
2	B	130	Total	C	N	O	S	0	2	0
			1088	693	190	200	5			

There are 3 discrepancies between the modelled and reference sequences:

Chain	Residue	Modelled	Actual	Comment	Reference
B	59	GLY	-	expression tag	UNP P41920
B	60	GLY	-	expression tag	UNP P41920
B	61	SER	-	expression tag	UNP P41920

- Molecule 3 is a protein called Exportin-1.

Mol	Chain	Residues	Atoms					ZeroOcc	AltConf	Trace
3	C	997	Total	C	N	O	S	0	37	0
			8315	5335	1372	1562	46			

There are 46 discrepancies between the modelled and reference sequences:

Chain	Residue	Modelled	Actual	Comment	Reference
C	-2	GLY	-	expression tag	UNP P30822
C	-1	GLY	-	expression tag	UNP P30822
C	0	SER	-	expression tag	UNP P30822
C	?	-	VAL	deletion	UNP P30822
C	?	-	GLN	deletion	UNP P30822
C	?	-	ARG	deletion	UNP P30822
C	?	-	LEU	deletion	UNP P30822
C	?	-	PRO	deletion	UNP P30822
C	?	-	ALA	deletion	UNP P30822
C	?	-	THR	deletion	UNP P30822
C	?	-	GLU	deletion	UNP P30822
C	?	-	MET	deletion	UNP P30822
C	?	-	SER	deletion	UNP P30822
C	?	-	PRO	deletion	UNP P30822
C	?	-	LEU	deletion	UNP P30822
C	?	-	ILE	deletion	UNP P30822
C	?	-	GLN	deletion	UNP P30822
C	?	-	LEU	deletion	UNP P30822
C	?	-	SER	deletion	UNP P30822
C	?	-	VAL	deletion	UNP P30822
C	?	-	GLY	deletion	UNP P30822
C	?	-	SER	deletion	UNP P30822
C	?	-	GLN	deletion	UNP P30822
C	?	-	ALA	deletion	UNP P30822

Continued on next page...

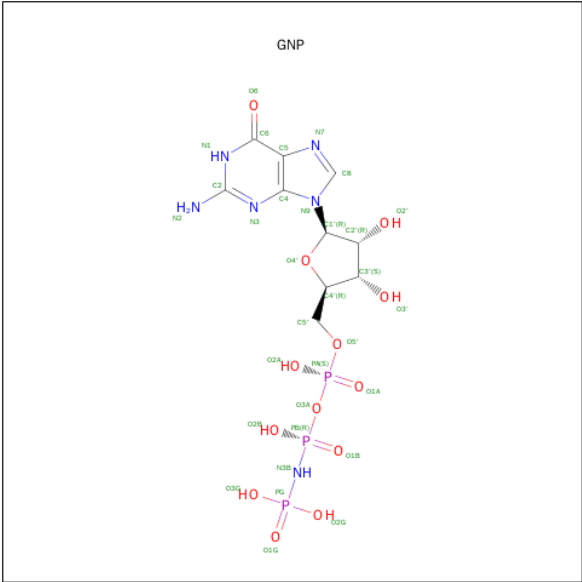
Continued from previous page...

Chain	Residue	Modelled	Actual	Comment	Reference
C	?	-	ILE	deletion	UNP P30822
C	?	-	SER	deletion	UNP P30822
C	?	-	THR	deletion	UNP P30822
C	?	-	GLY	deletion	UNP P30822
C	?	-	SER	deletion	UNP P30822
C	?	-	GLY	deletion	UNP P30822
C	?	-	ALA	deletion	UNP P30822
C	?	-	LEU	deletion	UNP P30822
C	?	-	ASN	deletion	UNP P30822
C	?	-	PRO	deletion	UNP P30822
C	?	-	GLU	deletion	UNP P30822
C	?	-	TYR	deletion	UNP P30822
C	?	-	MET	deletion	UNP P30822
C	?	-	LYS	deletion	UNP P30822
C	?	-	ARG	deletion	UNP P30822
C	?	-	PHE	deletion	UNP P30822
C	441	ASP	VAL	conflict	UNP P30822
C	537	GLY	ASP	engineered mutation	UNP P30822
C	539	CYS	THR	engineered mutation	UNP P30822
C	540	GLU	VAL	engineered mutation	UNP P30822
C	541	GLN	LYS	engineered mutation	UNP P30822
C	1022	CYS	TYR	engineered mutation	UNP P30822

- Molecule 4 is a protein called Cytoplasmic polyadenylation element-binding protein 4.

Mol	Chain	Residues	Atoms					ZeroOcc	AltConf	Trace
4	D	15	Total	C	N	O	S	0	0	0
			122	76	20	25	1			

- Molecule 5 is PHOSPHOAMINOPHOSPHONIC ACID-GUANYLATE ESTER (three-letter code: GNP) (formula: C₁₀H₁₇N₆O₁₃P₃).

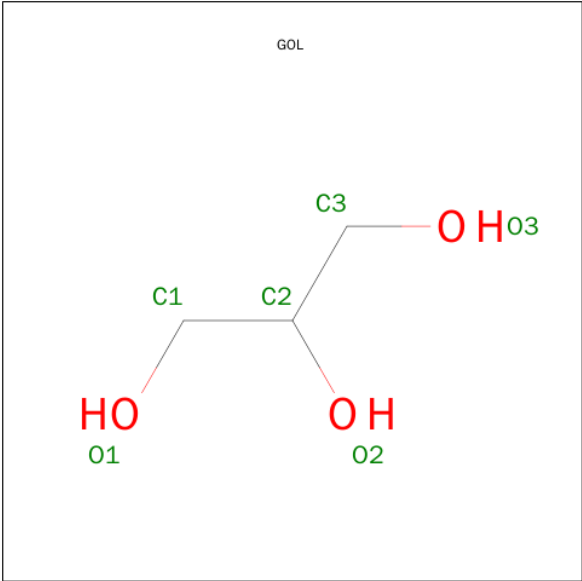


Mol	Chain	Residues	Atoms					ZeroOcc	AltConf
5	A	1	Total	C	N	O	P	0	0
			32	10	6	13	3		

- Molecule 6 is MAGNESIUM ION (three-letter code: MG) (formula: Mg).

Mol	Chain	Residues	Atoms		ZeroOcc	AltConf
6	A	1	Total	Mg	0	0
			1	1		

- Molecule 7 is GLYCEROL (three-letter code: GOL) (formula: C₃H₈O₃).



Mol	Chain	Residues	Atoms			ZeroOcc	AltConf
7	A	1	Total	C	O	0	0
			6	3	3		
7	C	1	Total	C	O	0	0
			6	3	3		
7	C	1	Total	C	O	0	0
			6	3	3		
7	C	1	Total	C	O	0	0
			6	3	3		
7	C	1	Total	C	O	0	0
			6	3	3		
7	C	1	Total	C	O	0	0
			6	3	3		

- Molecule 8 is CHLORIDE ION (three-letter code: CL) (formula: Cl).

Mol	Chain	Residues	Atoms		ZeroOcc	AltConf
8	C	1	Total	Cl	0	0
			1	1		

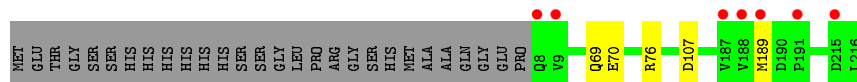
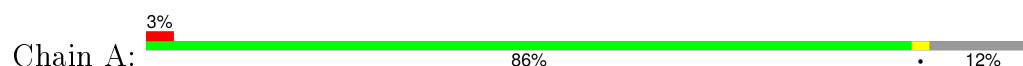
- Molecule 9 is water.

Mol	Chain	Residues	Atoms		ZeroOcc	AltConf
9	A	128	Total	O	0	0
			128	128		
9	B	26	Total	O	0	0
			26	26		
9	C	506	Total	O	0	0
			506	506		

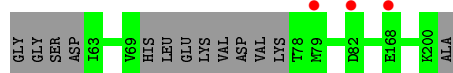
3 Residue-property plots [i](#)

These plots are drawn for all protein, RNA and DNA chains in the entry. The first graphic for a chain summarises the proportions of errors displayed in the second graphic. The second graphic shows the sequence view annotated by issues in geometry and electron density. Residues are color-coded according to the number of geometric quality criteria for which they contain at least one outlier: green = 0, yellow = 1, orange = 2 and red = 3 or more. A red dot above a residue indicates a poor fit to the electron density ($RSRZ > 2$). Stretches of 2 or more consecutive residues without any outlier are shown as a green connector. Residues present in the sample, but not in the model, are shown in grey.

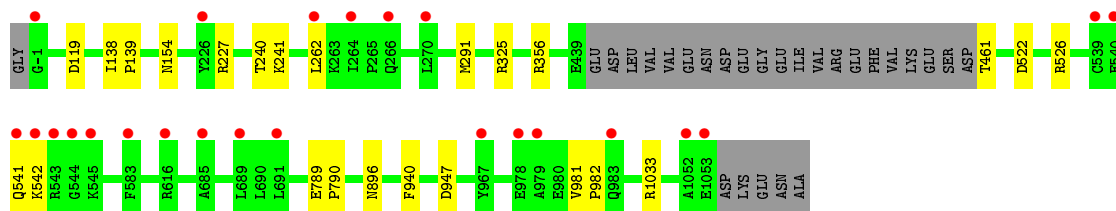
- Molecule 1: GTP-binding nuclear protein Ran



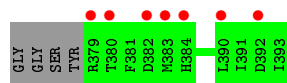
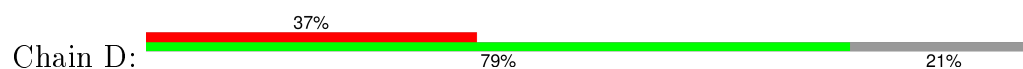
- Molecule 2: Ran-specific GTPase-activating protein 1



- Molecule 3: Exportin-1



- Molecule 4: Cytoplasmic polyadenylation element-binding protein 4



4 Data and refinement statistics

Property	Value	Source
Space group	P 43 21 2	Depositor
Cell constants a, b, c, α , β , γ	105.99Å 105.99Å 304.06Å 90.00° 90.00° 90.00°	Depositor
Resolution (Å)	40.19 – 2.09 47.40 – 2.09	Depositor EDS
% Data completeness (in resolution range)	95.7 (40.19-2.09) 90.2 (47.40-2.09)	Depositor EDS
R_{merge}	0.08	Depositor
R_{sym}	(Not available)	Depositor
$\langle I/\sigma(I) \rangle$ ¹	2.53 (at 2.08Å)	Xtriage
Refinement program	PHENIX	Depositor
R, R_{free}	0.170 , 0.208 0.178 , 0.172	Depositor DCC
R_{free} test set	4703 reflections (5.06%)	DCC
Wilson B-factor (Å ²)	23.9	Xtriage
Anisotropy	0.049	Xtriage
Bulk solvent k_{sol} (e/Å ³), B_{sol} (Å ²)	0.33 , 46.8	EDS
Estimated twinning fraction	No twinning to report.	Xtriage
L-test for twinning ²	$\langle L \rangle = 0.48$, $\langle L^2 \rangle = 0.31$	Xtriage
Outliers	0 of 98673 reflections	Xtriage
F_o, F_c correlation	0.95	EDS
Total number of atoms	11972	wwPDB-VP
Average B, all atoms (Å ²)	39.0	wwPDB-VP

Xtriage's analysis on translational NCS is as follows: *The largest off-origin peak in the Patterson function is 3.73% of the height of the origin peak. No significant pseudotranslation is detected.*

¹Intensities estimated from amplitudes.

²Theoretical values of $\langle |L| \rangle$, $\langle L^2 \rangle$ for acentric reflections are 0.5, 0.375 respectively for untwinned datasets, and 0.333, 0.2 for perfectly twinned datasets.

5 Model quality [i](#)

5.1 Standard geometry [i](#)

Bond lengths and bond angles in the following residue types are not validated in this section: GOL, GNP, MG, CL

The Z score for a bond length (or angle) is the number of standard deviations the observed value is removed from the expected value. A bond length (or angle) with $|Z| > 5$ is considered an outlier worth inspection. RMSZ is the root-mean-square of all Z scores of the bond lengths (or angles).

Mol	Chain	Bond lengths		Bond angles	
		RMSZ	$\# Z > 5$	RMSZ	$\# Z > 5$
1	A	0.23	0/1753	0.41	0/2378
2	B	0.22	0/1108	0.40	0/1480
3	C	0.23	0/8484	0.39	0/11491
4	D	0.22	0/123	0.36	0/164
All	All	0.23	0/11468	0.40	0/15513

There are no bond length outliers.

There are no bond angle outliers.

There are no chirality outliers.

There are no planarity outliers.

5.2 Too-close contacts [i](#)

In the following table, the Non-H and H(model) columns list the number of non-hydrogen atoms and hydrogen atoms in the chain respectively. The H(added) column lists the number of hydrogen atoms added and optimized by MolProbity. The Clashes column lists the number of clashes within the asymmetric unit, whereas Symm-Clashes lists symmetry related clashes.

Mol	Chain	Non-H	H(model)	H(added)	Clashes	Symm-Clashes
1	A	1711	0	1709	4	0
2	B	1088	0	1086	0	0
3	C	8315	0	8396	13	0
4	D	122	0	117	0	0
5	A	32	0	12	0	0
6	A	1	0	0	0	0
7	A	6	0	8	1	0
7	C	36	0	48	2	0
8	C	1	0	0	1	0

Continued on next page...

Continued from previous page...

Mol	Chain	Non-H	H(model)	H(added)	Clashes	Symm-Clashes
9	A	128	0	0	1	0
9	B	26	0	0	0	0
9	C	506	0	0	1	0
All	All	11972	0	11376	17	0

The all-atom clashscore is defined as the number of clashes found per 1000 atoms (including hydrogen atoms). The all-atom clashscore for this structure is 1.

All (17) close contacts within the same asymmetric unit are listed below, sorted by their clash magnitude.

Atom-1	Atom-2	Interatomic distance (Å)	Clash overlap (Å)
3:C:1033:ARG:HG2	7:C:1104:GOL:H12	1.79	0.65
3:C:356[A]:ARG:NH1	7:C:1107:GOL:H12	2.13	0.64
3:C:227[A]:ARG:NH1	8:C:1101:CL:CL	2.68	0.64
1:A:69[B]:GLN:NE2	9:A:401:HOH:O	2.33	0.61
3:C:896:ASN:ND2	3:C:947:ASP:O	2.34	0.60
3:C:262[B]:LEU:O	3:C:325[B]:ARG:NH2	2.39	0.56
3:C:1033:ARG:NH1	9:C:1205:HOH:O	2.35	0.54
1:A:107:ASP:OD2	7:A:303:GOL:O1	2.31	0.47
3:C:541:GLN:OE1	3:C:542:LYS:NZ	2.48	0.46
1:A:70:GLU:O	1:A:76:ARG:NH1	2.49	0.45
3:C:119:ASP:OD2	3:C:154:ASN:ND2	2.47	0.45
3:C:138:ILE:HB	3:C:139:PRO:HD3	1.99	0.44
3:C:981:VAL:HB	3:C:982:PRO:HD2	2.00	0.43
1:A:189:MET:HE2	1:A:189:MET:H	1.84	0.43
3:C:522:ASP:OD2	3:C:526:ARG:NH2	2.51	0.43
3:C:240:THR:OG1	3:C:241:LYS:N	2.52	0.42
3:C:789:GLU:HB2	3:C:790:PRO:HD3	2.02	0.41

There are no symmetry-related clashes.

5.3 Torsion angles [i](#)

5.3.1 Protein backbone [i](#)

In the following table, the Percentiles column shows the percent Ramachandran outliers of the chain as a percentile score with respect to all X-ray entries followed by that with respect to entries of similar resolution.

The Analysed column shows the number of residues for which the backbone conformation was analysed, and the total number of residues.

Mol	Chain	Analysed	Favoured	Allowed	Outliers	Percentiles	
1	A	211/237 (89%)	205 (97%)	6 (3%)	0	100	100
2	B	128/143 (90%)	121 (94%)	7 (6%)	0	100	100
3	C	1030/1024 (101%)	1014 (98%)	16 (2%)	0	100	100
4	D	13/19 (68%)	13 (100%)	0	0	100	100
All	All	1382/1423 (97%)	1353 (98%)	29 (2%)	0	100	100

There are no Ramachandran outliers to report.

5.3.2 Protein sidechains ⓘ

In the following table, the Percentiles column shows the percent sidechain outliers of the chain as a percentile score with respect to all X-ray entries followed by that with respect to entries of similar resolution.

The Analysed column shows the number of residues for which the sidechain conformation was analysed, and the total number of residues.

Mol	Chain	Analysed	Rotameric	Outliers	Percentiles	
1	A	185/203 (91%)	185 (100%)	0	100	100
2	B	114/122 (93%)	114 (100%)	0	100	100
3	C	946/933 (101%)	943 (100%)	3 (0%)	94	97
4	D	15/17 (88%)	15 (100%)	0	100	100
All	All	1260/1275 (99%)	1257 (100%)	3 (0%)	95	97

All (3) residues with a non-rotameric sidechain are listed below:

Mol	Chain	Res	Type
3	C	291	MET
3	C	461	THR
3	C	940	PHE

Some sidechains can be flipped to improve hydrogen bonding and reduce clashes. There are no such sidechains identified.

5.3.3 RNA ⓘ

There are no RNA molecules in this entry.

5.4 Non-standard residues in protein, DNA, RNA chains [i](#)

There are no non-standard protein/DNA/RNA residues in this entry.

5.5 Carbohydrates [i](#)

There are no carbohydrates in this entry.

5.6 Ligand geometry [i](#)

Of 10 ligands modelled in this entry, 2 are monoatomic - leaving 8 for Mogul analysis.

In the following table, the Counts columns list the number of bonds (or angles) for which Mogul statistics could be retrieved, the number of bonds (or angles) that are observed in the model and the number of bonds (or angles) that are defined in the chemical component dictionary. The Link column lists molecule types, if any, to which the group is linked. The Z score for a bond length (or angle) is the number of standard deviations the observed value is removed from the expected value. A bond length (or angle) with $|Z| > 2$ is considered an outlier worth inspection. RMSZ is the root-mean-square of all Z scores of the bond lengths (or angles).

Mol	Type	Chain	Res	Link	Bond lengths			Bond angles		
					Counts	RMSZ	$\# Z > 2$	Counts	RMSZ	$\# Z > 2$
5	GNP	A	301	6	29,34,34	4.40	11 (37%)	29,54,54	1.64	5 (17%)
7	GOL	A	303	-	5,5,5	0.36	0	5,5,5	0.23	0
7	GOL	C	1102	-	5,5,5	0.37	0	5,5,5	0.22	0
7	GOL	C	1103	-	5,5,5	0.36	0	5,5,5	0.23	0
7	GOL	C	1104	-	5,5,5	0.35	0	5,5,5	0.23	0
7	GOL	C	1105	-	5,5,5	0.36	0	5,5,5	0.23	0
7	GOL	C	1106	-	5,5,5	0.36	0	5,5,5	0.21	0
7	GOL	C	1107	-	5,5,5	0.37	0	5,5,5	0.23	0

In the following table, the Chirals column lists the number of chiral outliers, the number of chiral centers analysed, the number of these observed in the model and the number defined in the chemical component dictionary. Similar counts are reported in the Torsion and Rings columns. '-' means no outliers of that kind were identified.

Mol	Type	Chain	Res	Link	Chirals	Torsions	Rings
5	GNP	A	301	6	-	0/13/38/38	0/3/3/3
7	GOL	A	303	-	-	0/4/4/4	0/0/0/0
7	GOL	C	1102	-	-	0/4/4/4	0/0/0/0
7	GOL	C	1103	-	-	0/4/4/4	0/0/0/0
7	GOL	C	1104	-	-	0/4/4/4	0/0/0/0
7	GOL	C	1105	-	-	0/4/4/4	0/0/0/0
7	GOL	C	1106	-	-	0/4/4/4	0/0/0/0

Continued on next page...

Continued from previous page...

Mol	Type	Chain	Res	Link	Chirals	Torsions	Rings
7	GOL	C	1107	-	-	0/4/4/4	0/0/0/0

All (11) bond length outliers are listed below:

Mol	Chain	Res	Type	Atoms	Z	Observed(Å)	Ideal(Å)
5	A	301	GNP	C2'-C1'	-14.56	1.30	1.53
5	A	301	GNP	O4'-C4'	-6.20	1.30	1.45
5	A	301	GNP	O3'-C3'	-2.83	1.36	1.43
5	A	301	GNP	C5-C4	-2.23	1.35	1.40
5	A	301	GNP	PG-O2G	-2.13	1.51	1.56
5	A	301	GNP	PB-O2B	-2.01	1.51	1.56
5	A	301	GNP	O2'-C2'	2.96	1.49	1.43
5	A	301	GNP	C2-N2	3.82	1.42	1.34
5	A	301	GNP	PG-O1G	5.19	1.51	1.46
5	A	301	GNP	PB-O1B	5.20	1.51	1.46
5	A	301	GNP	O4'-C1'	14.10	1.61	1.41

All (5) bond angle outliers are listed below:

Mol	Chain	Res	Type	Atoms	Z	Observed(°)	Ideal(°)
5	A	301	GNP	N3-C2-N1	-5.45	120.14	127.56
5	A	301	GNP	C5-C6-N1	-2.87	119.77	123.52
5	A	301	GNP	C4'-O4'-C1'	-2.10	107.42	109.64
5	A	301	GNP	N2-C2-N1	2.29	120.97	117.20
5	A	301	GNP	C6-N1-C2	3.70	120.22	115.88

There are no chirality outliers.

There are no torsion outliers.

There are no ring outliers.

3 monomers are involved in 3 short contacts:

Mol	Chain	Res	Type	Clashes	Symm-Clashes
7	A	303	GOL	1	0
7	C	1104	GOL	1	0
7	C	1107	GOL	1	0

5.7 Other polymers ⓘ

There are no such residues in this entry.

5.8 Polymer linkage issues ⓘ

There are no chain breaks in this entry.

6 Fit of model and data ⓘ

6.1 Protein, DNA and RNA chains ⓘ

In the following table, the column labelled ‘#RSRZ> 2’ contains the number (and percentage) of RSRZ outliers, followed by percent RSRZ outliers for the chain as percentile scores relative to all X-ray entries and entries of similar resolution. The OWAB column contains the minimum, median, 95th percentile and maximum values of the occupancy-weighted average B-factor per residue. The column labelled ‘Q< 0.9’ lists the number of (and percentage) of residues with an average occupancy less than 0.9.

Mol	Chain	Analysed	<RSRZ>	#RSRZ>2	OWAB(Å ²)	Q<0.9
1	A	209/237 (88%)	-0.07	7 (3%) 50 59	15, 29, 76, 106	0
2	B	130/143 (90%)	0.10	3 (2%) 64 70	28, 45, 76, 82	0
3	C	997/1024 (97%)	-0.08	24 (2%) 62 68	13, 33, 72, 111	0
4	D	15/19 (78%)	2.06	7 (46%) 0 0	60, 72, 90, 115	0
All	All	1351/1423 (94%)	-0.04	41 (3%) 54 62	13, 35, 75, 115	0

All (41) RSRZ outliers are listed below:

Mol	Chain	Res	Type	RSRZ
3	C	1053	GLU	6.2
3	C	264[A]	ILE	5.8
4	D	384	HIS	4.2
3	C	689	LEU	3.8
3	C	270	LEU	3.8
3	C	967	TYR	3.7
4	D	392	ASP	3.7
3	C	-1	GLY	3.7
3	C	544	GLY	3.6
3	C	616	ARG	3.4
1	A	187	VAL	3.3
1	A	188	VAL	3.3
1	A	9	VAL	3.3
4	D	390	LEU	3.2
4	D	379	ARG	3.2
3	C	262[A]	LEU	3.2
1	A	8	GLN	3.1
3	C	978	GLU	2.8
3	C	545	LYS	2.7
2	B	82	ASP	2.7
3	C	543	ARG	2.7

Continued on next page...

Continued from previous page...

Mol	Chain	Res	Type	RSRZ
3	C	1052	ALA	2.7
3	C	540	GLU	2.6
3	C	539	CYS	2.6
3	C	691	LEU	2.6
1	A	215	ASP	2.5
1	A	191	PRO	2.4
3	C	542	LYS	2.4
1	A	189	MET	2.3
3	C	266	GLN	2.3
4	D	382	ASP	2.3
3	C	983	GLN	2.3
3	C	685	ALA	2.2
3	C	226[A]	TYR	2.2
3	C	583	PHE	2.2
2	B	79	MET	2.2
4	D	380	THR	2.1
4	D	383	MET	2.1
3	C	979	ALA	2.0
2	B	168	GLU	2.0
3	C	541	GLN	2.0

6.2 Non-standard residues in protein, DNA, RNA chains [i](#)

There are no non-standard protein/DNA/RNA residues in this entry.

6.3 Carbohydrates [i](#)

There are no carbohydrates in this entry.

6.4 Ligands [i](#)

In the following table, the Atoms column lists the number of modelled atoms in the group and the number defined in the chemical component dictionary. LLDF column lists the quality of electron density of the group with respect to its neighbouring residues in protein, DNA or RNA chains. The B-factors column lists the minimum, median, 95th percentile and maximum values of B factors of atoms in the group. The column labelled 'Q< 0.9' lists the number of atoms with occupancy less than 0.9.

Mol	Type	Chain	Res	Atoms	RSCC	RSR	LLDF	B-factors(Å ²)	Q<0.9
7	GOL	A	303	6/6	0.90	0.22	11.92	48,63,67,70	0

Continued on next page...

Continued from previous page...

Mol	Type	Chain	Res	Atoms	RSCC	RSR	LLDF	B-factors(\AA^2)	Q<0.9
7	GOL	C	1105	6/6	0.68	0.27	5.48	70,76,77,79	0
7	GOL	C	1107	6/6	0.93	0.29	3.94	51,88,94,101	0
7	GOL	C	1106	6/6	0.82	0.16	0.90	70,73,75,78	0
5	GNP	A	301	32/32	0.99	0.11	-0.03	14,21,28,31	0
8	CL	C	1101	1/1	0.92	0.09	-3.18	73,73,73,73	0
6	MG	A	302	1/1	0.99	0.04	-4.68	15,15,15,15	0
7	GOL	C	1102	6/6	0.93	0.29	-	54,59,64,72	0
7	GOL	C	1104	6/6	0.64	0.29	-	66,73,82,84	0
7	GOL	C	1103	6/6	0.59	0.24	-	72,87,89,89	6

6.5 Other polymers [i](#)

There are no such residues in this entry.