



# Full wwPDB X-ray Structure Validation Report ⓘ

Jan 31, 2016 – 07:00 PM GMT

PDB ID : 1DKU  
Title : CRYSTAL STRUCTURES OF BACILLUS SUBTILIS PHOSPHORIBOSYL PYROPHOSPHATE SYNTHETASE: MOLECULAR BASIS OF ALLOSTERIC INHIBITION AND ACTIVATION.  
Authors : Eriksen, T.A.; Kadziola, A.; Bentsen, A.-K.; Harlow, K.W.; Larsen, S.  
Deposited on : 1999-12-08  
Resolution : 2.20 Å(reported)

This is a Full wwPDB X-ray Structure Validation Report for a publicly released PDB entry.  
We welcome your comments at [validation@mail.wwpdb.org](mailto:validation@mail.wwpdb.org)  
A user guide is available at  
<http://wwpdb.org/validation/2016/XrayValidationReportHelp>  
with specific help available everywhere you see the ⓘ symbol.

---

The following versions of software and data (see [references ⓘ](#)) were used in the production of this report:

MolProbity : 4.02b-467  
Mogul : 1.7 (RC4), CSD as536be (2015)  
Xtriage (Phenix) : 1.9-1692  
EDS : rb-20026688  
Percentile statistics : 20151230.v01 (using entries in the PDB archive December 30th 2015)  
Refmac : 5.8.0135  
CCP4 : 6.5.0  
Ideal geometry (proteins) : Engh & Huber (2001)  
Ideal geometry (DNA, RNA) : Parkinson et al. (1996)  
Validation Pipeline (wwPDB-VP) : trunk26865

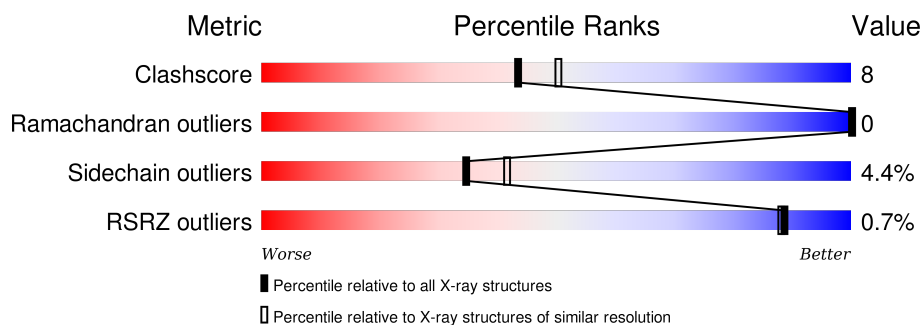
# 1 Overall quality at a glance

The following experimental techniques were used to determine the structure:

## *X-RAY DIFFRACTION*

The reported resolution of this entry is 2.20 Å.

Percentile scores (ranging between 0-100) for global validation metrics of the entry are shown in the following graphic. The table shows the number of entries on which the scores are based.



Metric	Whole archive (#Entries)	Similar resolution (#Entries, resolution range(Å))
Clashscore	102246	4477 (2.20-2.20)
Ramachandran outliers	100387	4404 (2.20-2.20)
Sidechain outliers	100360	4405 (2.20-2.20)
RSRZ outliers	91569	3781 (2.20-2.20)

The table below summarises the geometric issues observed across the polymeric chains and their fit to the electron density. The red, orange, yellow and green segments on the lower bar indicate the fraction of residues that contain outliers for  $\geq 3$ , 2, 1 and 0 types of geometric quality criteria. A grey segment represents the fraction of residues that are not modelled. The numeric value for each fraction is indicated below the corresponding segment, with a dot representing fractions  $\leq 5\%$ . The upper red bar (where present) indicates the fraction of residues that have poor fit to the electron density. The numeric value is given above the bar.

Mol	Chain	Length	Quality of chain
1	A	317	<div> <div></div> <div>74% 19% • 7%</div> </div>
1	B	317	<div> <div></div> <div>74% 19% • 7%</div> </div>

The following table lists non-polymeric compounds, carbohydrate monomers and non-standard residues in protein, DNA, RNA chains that are outliers for geometric or electron-density-fit criteria:

Mol	Type	Chain	Res	Chirality	Geometry	Clashes	Electron density
3	ABM	A	1003	-	-	-	X
3	ABM	B	1004	-	-	-	X

## 2 Entry composition [i](#)

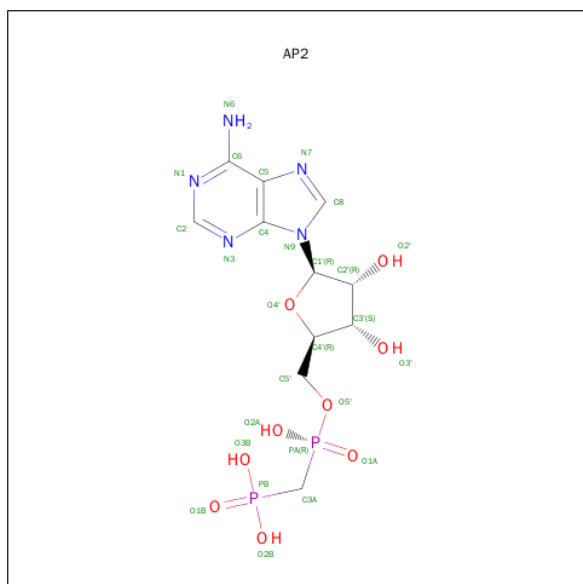
There are 4 unique types of molecules in this entry. The entry contains 4824 atoms, of which 0 are hydrogens and 0 are deuteriums.

In the tables below, the ZeroOcc column contains the number of atoms modelled with zero occupancy, the AltConf column contains the number of residues with at least one atom in alternate conformation and the Trace column contains the number of residues modelled with at most 2 atoms.

- Molecule 1 is a protein called PROTEIN (PHOSPHORIBOSYL PYROPHOSPHATE SYNTHETASE).

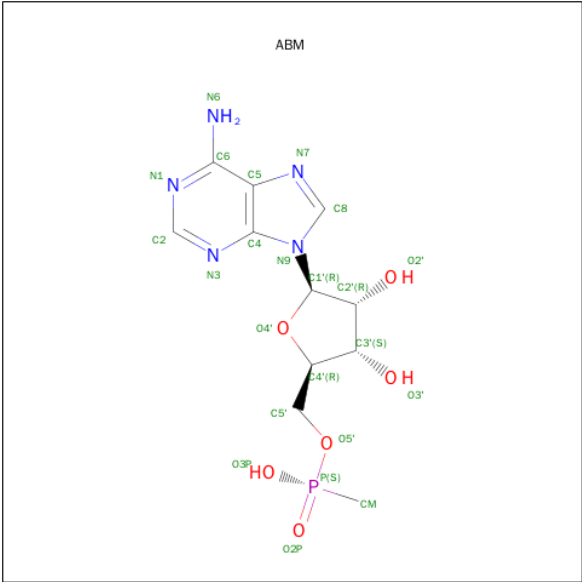
Mol	Chain	Residues	Atoms					ZeroOcc	AltConf	Trace
1	A	295	Total	C	N	O	S	0	0	0
			2272	1442	393	428	9			
1	B	295	Total	C	N	O	S	0	0	0
			2272	1442	393	428	9			

- Molecule 2 is PHOSPHOMETHYLPHOSPHONIC ACID ADENOSYL ESTER (three-letter code: AP2) (formula: C<sub>11</sub>H<sub>17</sub>N<sub>5</sub>O<sub>9</sub>P<sub>2</sub>).



Mol	Chain	Residues	Atoms					ZeroOcc	AltConf
2	B	1	Total	C	N	O	P	0	0
			27	11	5	9	2		
2	A	1	Total	C	N	O	P	0	0
			27	11	5	9	2		

- Molecule 3 is METHYL PHOSPHONIC ACID ADENOSINE ESTER (three-letter code: ABM) (formula: C<sub>11</sub>H<sub>16</sub>N<sub>5</sub>O<sub>6</sub>P).



Mol	Chain	Residues	Atoms					ZeroOcc	AltConf
3	A	1	Total	C	N	O	P	0	0
			23	11	5	6	1		
3	B	1	Total	C	N	O	P	0	0
			23	11	5	6	1		

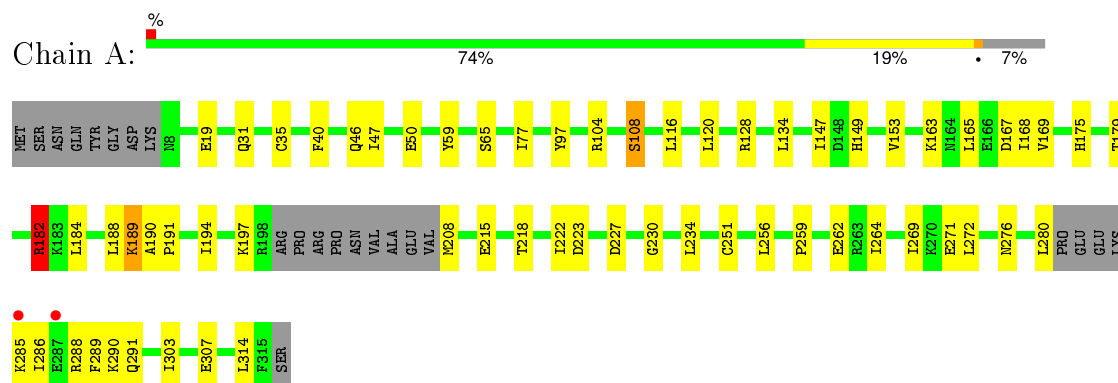
- Molecule 4 is water.

Mol	Chain	Residues	Atoms		ZeroOcc	AltConf
4	A	96	Total	O	0	0
			96	96		
4	B	84	Total	O	0	0
			84	84		

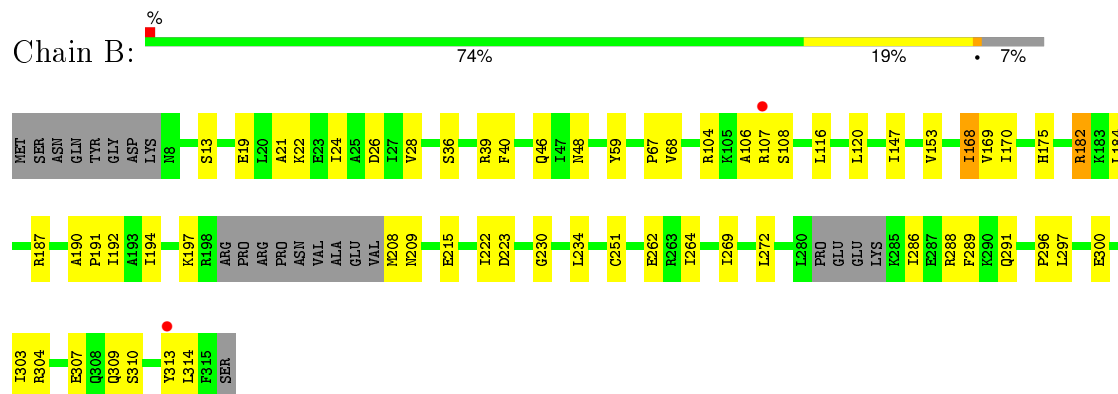
### 3 Residue-property plots

These plots are drawn for all protein, RNA and DNA chains in the entry. The first graphic for a chain summarises the proportions of errors displayed in the second graphic. The second graphic shows the sequence view annotated by issues in geometry and electron density. Residues are color-coded according to the number of geometric quality criteria for which they contain at least one outlier: green = 0, yellow = 1, orange = 2 and red = 3 or more. A red dot above a residue indicates a poor fit to the electron density ( $RSRZ > 2$ ). Stretches of 2 or more consecutive residues without any outlier are shown as a green connector. Residues present in the sample, but not in the model, are shown in grey.

- Molecule 1: PROTEIN (PHOSPHORIBOSYL PYROPHOSPHATE SYNTHETASE)



- Molecule 1: PROTEIN (PHOSPHORIBOSYL PYROPHOSPHATE SYNTHETASE)



## 4 Data and refinement statistics

Property	Value	Source
Space group	P 63	Depositor
Cell constants a, b, c, $\alpha$ , $\beta$ , $\gamma$	115.65Å 115.65Å 106.41Å 90.00° 90.00° 120.00°	Depositor
Resolution (Å)	30.00 – 2.20 22.98 – 1.70	Depositor EDS
% Data completeness (in resolution range)	(Not available) (30.00-2.20) 56.3 (22.98-1.70)	Depositor EDS
$R_{merge}$	0.13	Depositor
$R_{sym}$	(Not available)	Depositor
$\langle I/\sigma(I) \rangle$ <sup>1</sup>	1.68 (at 1.70Å)	Xtriage
Refinement program	X-PLOR 3.1	Depositor
R, $R_{free}$	0.198 , 0.241 0.198 , (Not available)	Depositor DCC
$R_{free}$ test set	No test flags present.	DCC
Wilson B-factor (Å <sup>2</sup> )	20.2	Xtriage
Anisotropy	0.167	Xtriage
Bulk solvent $k_{sol}$ (e/Å <sup>3</sup> ), $B_{sol}$ (Å <sup>2</sup> )	0.39 , 65.4	EDS
Estimated twinning fraction	0.048 for h,-h-k,-l	Xtriage
L-test for twinning <sup>2</sup>	$\langle  L  \rangle = 0.50$ , $\langle L^2 \rangle = 0.33$	Xtriage
Outliers	0 of 50000 reflections	Xtriage
$F_o, F_c$ correlation	0.95	EDS
Total number of atoms	4824	wwPDB-VP
Average B, all atoms (Å <sup>2</sup> )	26.0	wwPDB-VP

Xtriage's analysis on translational NCS is as follows: *The largest off-origin peak in the Patterson function is 2.69% of the height of the origin peak. No significant pseudotranslation is detected.*

<sup>1</sup>Intensities estimated from amplitudes.

<sup>2</sup>Theoretical values of  $\langle |L| \rangle$ ,  $\langle L^2 \rangle$  for acentric reflections are 0.5, 0.375 respectively for untwinned datasets, and 0.333, 0.2 for perfectly twinned datasets.

## 5 Model quality [i](#)

### 5.1 Standard geometry [i](#)

Bond lengths and bond angles in the following residue types are not validated in this section: AP2, ABM

The Z score for a bond length (or angle) is the number of standard deviations the observed value is removed from the expected value. A bond length (or angle) with  $|Z| > 5$  is considered an outlier worth inspection. RMSZ is the root-mean-square of all Z scores of the bond lengths (or angles).

Mol	Chain	Bond lengths		Bond angles	
		RMSZ	$\# Z  > 5$	RMSZ	$\# Z  > 5$
1	A	0.79	1/2302 (0.0%)	0.88	1/3116 (0.0%)
1	B	0.80	1/2302 (0.0%)	0.87	1/3116 (0.0%)
All	All	0.80	2/4604 (0.0%)	0.88	2/6232 (0.0%)

Chiral center outliers are detected by calculating the chiral volume of a chiral center and verifying if the center is modelled as a planar moiety or with the opposite hand. A planarity outlier is detected by checking planarity of atoms in a peptide group, atoms in a mainchain group or atoms of a sidechain that are expected to be planar.

Mol	Chain	#Chirality outliers	#Planarity outliers
1	A	0	2
1	B	0	1
All	All	0	3

All (2) bond length outliers are listed below:

Mol	Chain	Res	Type	Atoms	Z	Observed(Å)	Ideal(Å)
1	B	262	GLU	CG-CD	6.11	1.61	1.51
1	A	262	GLU	CG-CD	5.53	1.60	1.51

All (2) bond angle outliers are listed below:

Mol	Chain	Res	Type	Atoms	Z	Observed( $^{\circ}$ )	Ideal( $^{\circ}$ )
1	A	182	ARG	NE-CZ-NH2	-5.81	117.40	120.30
1	B	168	ILE	CB-CA-C	-5.08	101.44	111.60

There are no chirality outliers.

All (3) planarity outliers are listed below:

Mol	Chain	Res	Type	Group
1	A	59	TYR	Sidechain
1	A	97	TYR	Sidechain
1	B	59	TYR	Sidechain

## 5.2 Too-close contacts

In the following table, the Non-H and H(model) columns list the number of non-hydrogen atoms and hydrogen atoms in the chain respectively. The H(added) column lists the number of hydrogen atoms added and optimized by MolProbity. The Clashes column lists the number of clashes within the asymmetric unit, whereas Symm-Clashes lists symmetry related clashes.

Mol	Chain	Non-H	H(model)	H(added)	Clashes	Symm-Clashes
1	A	2272	0	2350	35	0
1	B	2272	0	2350	43	0
2	A	27	0	14	1	0
2	B	27	0	14	1	0
3	A	23	0	15	0	0
3	B	23	0	15	0	0
4	A	96	0	0	8	0
4	B	84	0	0	7	0
All	All	4824	0	4758	76	0

The all-atom clashscore is defined as the number of clashes found per 1000 atoms (including hydrogen atoms). The all-atom clashscore for this structure is 8.

All (76) close contacts within the same asymmetric unit are listed below, sorted by their clash magnitude.

Atom-1	Atom-2	Interatomic distance (Å)	Clash overlap (Å)
1:A:208:MET:SD	1:A:234:LEU:HD23	2.11	0.91
1:B:208:MET:SD	1:B:234:LEU:HD23	2.12	0.90
1:A:134:LEU:H	1:A:149:HIS:HE1	1.24	0.85
1:B:153:VAL:HG23	4:B:1065:HOH:O	1.75	0.85
1:A:128:ARG:HD3	4:A:1050:HOH:O	1.78	0.81
1:B:28:VAL:HG13	1:B:303:ILE:HD11	1.62	0.79
1:B:48:ASN:HA	4:B:1064:HOH:O	1.84	0.77
1:A:134:LEU:H	1:A:149:HIS:CE1	2.04	0.75
1:B:264:ILE:HD13	1:B:272:LEU:HD22	1.69	0.74
1:B:300:GLU:HG2	1:B:314:LEU:HD21	1.73	0.70
1:A:264:ILE:HD13	1:A:272:LEU:HD22	1.74	0.70
1:A:303:ILE:O	1:A:307:GLU:HG2	1.94	0.67
1:A:190:ALA:HB1	1:A:191:PRO:HD2	1.77	0.66

*Continued on next page...*



*Continued from previous page...*

Atom-1	Atom-2	Interatomic distance (Å)	Clash overlap (Å)
1:B:197:LYS:HD3	1:B:208:MET:HE3	1.78	0.66
1:B:175:HIS:HB2	4:B:1077:HOH:O	1.95	0.65
1:A:197:LYS:HD3	1:A:208:MET:HE3	1.80	0.64
1:A:175:HIS:CD2	1:B:182:ARG:HG3	2.37	0.60
1:B:168:ILE:HG22	1:B:169:VAL:N	2.17	0.59
1:A:163:LYS:NZ	1:A:271:GLU:OE1	2.39	0.55
1:B:307:GLU:HB2	1:B:309:GLN:HG3	1.89	0.55
1:B:304:ARG:HD3	1:B:310:SER:O	2.07	0.54
1:B:68:VAL:HB	4:B:1082:HOH:O	2.07	0.54
1:A:182:ARG:HG3	1:B:175:HIS:CD2	2.43	0.54
1:A:168:ILE:HG22	1:A:169:VAL:N	2.22	0.53
1:A:223:ASP:O	1:A:251:CYS:HA	2.08	0.53
1:A:40:PHE:CE2	1:A:46:GLN:HB2	2.44	0.53
1:B:36:SER:HB2	1:B:48:ASN:HD22	1.74	0.53
1:B:300:GLU:CG	1:B:314:LEU:HD21	2.39	0.53
1:B:24:ILE:O	1:B:28:VAL:HG23	2.09	0.52
1:A:208:MET:SD	1:A:234:LEU:CD2	2.92	0.52
1:B:223:ASP:O	1:B:251:CYS:HA	2.10	0.52
1:A:47:ILE:HD12	1:A:77:ILE:HG22	1.91	0.52
1:B:190:ALA:HB1	1:B:191:PRO:HD2	1.90	0.52
1:B:40:PHE:CZ	1:B:46:GLN:HG3	2.45	0.52
1:B:208:MET:SD	1:B:234:LEU:CD2	2.95	0.51
1:A:153:VAL:HG23	4:A:1044:HOH:O	2.12	0.49
1:A:290:LYS:HD2	4:A:1063:HOH:O	2.13	0.49
1:A:46:GLN:HA	4:A:1011:HOH:O	2.12	0.48
1:A:108:SER:HB2	2:B:1001:AP2:H3A1	1.96	0.48
1:A:116:LEU:O	1:A:120:LEU:HG	2.13	0.48
1:B:22:LYS:NZ	1:B:26:ASP:OD2	2.46	0.47
1:B:291:GLN:NE2	4:B:1047:HOH:O	2.48	0.47
1:B:170:ILE:O	1:B:192:ILE:HA	2.14	0.47
1:A:276:ASN:HA	4:A:1073:HOH:O	2.14	0.47
1:B:40:PHE:CE2	1:B:46:GLN:HG3	2.50	0.46
1:B:67:PRO:HA	4:B:1019:HOH:O	2.15	0.46
1:A:280:LEU:HD23	1:A:280:LEU:HA	1.69	0.46
1:B:296:PRO:HD2	4:B:1014:HOH:O	2.15	0.46
1:A:184:LEU:HD22	1:A:222:ILE:HD12	1.97	0.46
2:A:1002:AP2:H3A1	1:B:108:SER:HB2	1.97	0.46
1:B:39:ARG:HH11	1:B:39:ARG:HG2	1.81	0.46
1:B:36:SER:HB2	1:B:48:ASN:ND2	2.30	0.45
1:A:197:LYS:HB2	1:A:208:MET:HE2	1.97	0.45
1:A:188:LEU:O	1:A:189:LYS:C	2.55	0.45

*Continued on next page...*

Continued from previous page...

Atom-1	Atom-2	Interatomic distance (Å)	Clash overlap (Å)
1:B:187:ARG:O	1:B:187:ARG:HG3	2.15	0.45
1:B:116:LEU:O	1:B:120:LEU:HG	2.16	0.45
1:B:286:ILE:HG21	1:B:289:PHE:HB3	1.99	0.44
1:B:184:LEU:HD22	1:B:222:ILE:HD12	1.97	0.44
1:A:165:LEU:HD13	1:A:218:THR:HG21	1.99	0.44
1:A:286:ILE:HG21	1:A:289:PHE:HB3	2.00	0.44
1:A:35:CYS:SG	1:A:35:CYS:O	2.72	0.44
1:B:106:ALA:O	1:B:107:ARG:NH1	2.49	0.43
1:B:230:GLY:O	1:B:234:LEU:HB2	2.18	0.43
1:A:291:GLN:NE2	4:A:1073:HOH:O	2.52	0.43
1:A:179:THR:HB	4:A:1012:HOH:O	2.19	0.43
1:A:230:GLY:O	1:A:234:LEU:HB2	2.18	0.43
1:B:197:LYS:HB2	1:B:208:MET:HE2	2.01	0.42
1:B:40:PHE:CE2	1:B:46:GLN:HB2	2.54	0.42
1:A:65:SER:HB2	4:A:1045:HOH:O	2.19	0.42
1:B:297:LEU:HD12	1:B:314:LEU:HD22	2.02	0.42
1:A:269:ILE:O	1:A:288:ARG:NH2	2.49	0.42
1:B:303:ILE:O	1:B:307:GLU:HG2	2.20	0.42
1:B:46:GLN:OE1	1:B:48:ASN:ND2	2.53	0.41
1:A:227:ASP:O	1:A:256:LEU:HA	2.21	0.41
1:B:269:ILE:O	1:B:288:ARG:NH2	2.51	0.40
1:B:13:SER:HB2	1:B:21:ALA:HB1	2.03	0.40

There are no symmetry-related clashes.

## 5.3 Torsion angles [i](#)

### 5.3.1 Protein backbone [i](#)

In the following table, the Percentiles column shows the percent Ramachandran outliers of the chain as a percentile score with respect to all X-ray entries followed by that with respect to entries of similar resolution.

The Analysed column shows the number of residues for which the backbone conformation was analysed, and the total number of residues.

Mol	Chain	Analysed	Favoured	Allowed	Outliers	Percentiles	
1	A	289/317 (91%)	272 (94%)	17 (6%)	0	100	100
1	B	289/317 (91%)	274 (95%)	15 (5%)	0	100	100
All	All	578/634 (91%)	546 (94%)	32 (6%)	0	100	100

There are no Ramachandran outliers to report.

### 5.3.2 Protein sidechains ⓘ

In the following table, the Percentiles column shows the percent sidechain outliers of the chain as a percentile score with respect to all X-ray entries followed by that with respect to entries of similar resolution.

The Analysed column shows the number of residues for which the sidechain conformation was analysed, and the total number of residues.

Mol	Chain	Analysed	Rotameric	Outliers	Percentiles	
1	A	250/270 (93%)	236 (94%)	14 (6%)	26	29
1	B	250/270 (93%)	242 (97%)	8 (3%)	46	57
All	All	500/540 (93%)	478 (96%)	22 (4%)	35	42

All (22) residues with a non-rotameric sidechain are listed below:

Mol	Chain	Res	Type
1	A	19	GLU
1	A	31	GLN
1	A	50	GLU
1	A	104	ARG
1	A	108	SER
1	A	147	ILE
1	A	167	ASP
1	A	182	ARG
1	A	189	LYS
1	A	194	ILE
1	A	215	GLU
1	A	259	PRO
1	A	285	LYS
1	A	314	LEU
1	B	19	GLU
1	B	104	ARG
1	B	147	ILE
1	B	182	ARG
1	B	194	ILE
1	B	209	ASN
1	B	215	GLU
1	B	313	TYR

Some sidechains can be flipped to improve hydrogen bonding and reduce clashes. All (6) such sidechains are listed below:

Mol	Chain	Res	Type
1	A	149	HIS
1	A	209	ASN
1	A	291	GLN
1	B	8	ASN
1	B	209	ASN
1	B	308	GLN

### 5.3.3 RNA [i](#)

There are no RNA molecules in this entry.

## 5.4 Non-standard residues in protein, DNA, RNA chains [i](#)

There are no non-standard protein/DNA/RNA residues in this entry.

## 5.5 Carbohydrates [i](#)

There are no carbohydrates in this entry.

## 5.6 Ligand geometry [i](#)

4 ligands are modelled in this entry.

In the following table, the Counts columns list the number of bonds (or angles) for which Mogul statistics could be retrieved, the number of bonds (or angles) that are observed in the model and the number of bonds (or angles) that are defined in the chemical component dictionary. The Link column lists molecule types, if any, to which the group is linked. The Z score for a bond length (or angle) is the number of standard deviations the observed value is removed from the expected value. A bond length (or angle) with  $|Z| > 2$  is considered an outlier worth inspection. RMSZ is the root-mean-square of all Z scores of the bond lengths (or angles).

Mol	Type	Chain	Res	Link	Bond lengths			Bond angles		
					Counts	RMSZ	$\# Z  > 2$	Counts	RMSZ	$\# Z  > 2$
2	AP2	A	1002	-	22,29,29	2.22	7 (31%)	27,45,45	1.73	6 (22%)
3	ABM	A	1003	-	20,25,25	1.90	4 (20%)	19,38,38	0.92	1 (5%)
2	AP2	B	1001	-	22,29,29	1.40	4 (18%)	27,45,45	1.68	5 (18%)
3	ABM	B	1004	-	20,25,25	2.05	4 (20%)	19,38,38	1.05	1 (5%)

In the following table, the Chirals column lists the number of chiral outliers, the number of chiral centers analysed, the number of these observed in the model and the number defined in the chemical component dictionary. Similar counts are reported in the Torsion and Rings columns. '-' means

no outliers of that kind were identified.

Mol	Type	Chain	Res	Link	Chirals	Torsions	Rings
2	AP2	A	1002	-	-	0/12/32/32	0/3/3/3
3	ABM	A	1003	-	-	0/6/26/26	0/3/3/3
2	AP2	B	1001	-	-	0/12/32/32	0/3/3/3
3	ABM	B	1004	-	-	0/6/26/26	0/3/3/3

All (19) bond length outliers are listed below:

Mol	Chain	Res	Type	Atoms	Z	Observed(Å)	Ideal(Å)
2	A	1002	AP2	PA-O2A	-4.73	1.44	1.56
2	A	1002	AP2	PB-O3B	-4.05	1.45	1.54
2	A	1002	AP2	PB-O2B	-3.90	1.45	1.54
2	B	1001	AP2	PA-O2A	-2.87	1.49	1.56
2	A	1002	AP2	C8-N7	-2.44	1.29	1.34
2	B	1001	AP2	PB-O2B	-2.32	1.49	1.54
3	B	1004	ABM	C2-N3	2.07	1.35	1.32
2	A	1002	AP2	C2-N3	2.16	1.36	1.32
3	A	1003	ABM	C5'-C4'	2.18	1.58	1.51
2	B	1001	AP2	O4'-C1'	3.18	1.45	1.41
2	B	1001	AP2	PA-O5'	3.29	1.61	1.57
3	B	1004	ABM	P-O2P	3.32	1.55	1.50
2	A	1002	AP2	PA-O5'	3.32	1.61	1.57
3	A	1003	ABM	P-O2P	3.34	1.55	1.50
3	A	1003	ABM	O4'-C1'	3.59	1.45	1.41
2	A	1002	AP2	O4'-C1'	4.22	1.46	1.41
3	A	1003	ABM	P-O5'	4.78	1.62	1.57
3	B	1004	ABM	O4'-C1'	5.00	1.47	1.41
3	B	1004	ABM	P-O5'	5.14	1.63	1.57

All (13) bond angle outliers are listed below:

Mol	Chain	Res	Type	Atoms	Z	Observed(°)	Ideal(°)
2	A	1002	AP2	O2B-PB-C3A	-4.11	96.42	106.40
2	B	1001	AP2	O3B-PB-C3A	-3.31	98.37	106.40
2	A	1002	AP2	O1B-PB-C3A	-2.94	104.44	111.13
2	B	1001	AP2	O2B-PB-C3A	-2.92	99.32	106.40
2	A	1002	AP2	C2'-C1'-N9	-2.67	110.21	114.29
3	B	1004	ABM	O2P-P-CM	-2.65	104.38	113.85
2	B	1001	AP2	O1B-PB-C3A	-2.52	105.40	111.13
3	A	1003	ABM	C1'-N9-C4	-2.50	123.17	126.94
2	A	1002	AP2	O2B-PB-O1B	2.52	118.85	112.40
2	A	1002	AP2	O3B-PB-O2B	2.88	116.57	108.13

*Continued on next page...*

*Continued from previous page...*

Mol	Chain	Res	Type	Atoms	Z	Observed( $^{\circ}$ )	Ideal( $^{\circ}$ )
2	B	1001	AP2	O3B-PB-O2B	3.35	117.95	108.13
2	B	1001	AP2	O2A-PA-O1A	4.02	122.75	110.12
2	A	1002	AP2	O2A-PA-O1A	4.08	122.94	110.12

There are no chirality outliers.

There are no torsion outliers.

There are no ring outliers.

2 monomers are involved in 2 short contacts:

Mol	Chain	Res	Type	Clashes	Symm-Clashes
2	A	1002	AP2	1	0
2	B	1001	AP2	1	0

## 5.7 Other polymers [i](#)

There are no such residues in this entry.

## 5.8 Polymer linkage issues [i](#)

There are no chain breaks in this entry.

## 6 Fit of model and data [i](#)

### 6.1 Protein, DNA and RNA chains [i](#)

In the following table, the column labelled ‘#RSRZ> 2’ contains the number (and percentage) of RSRZ outliers, followed by percent RSRZ outliers for the chain as percentile scores relative to all X-ray entries and entries of similar resolution. The OWAB column contains the minimum, median, 95<sup>th</sup> percentile and maximum values of the occupancy-weighted average B-factor per residue. The column labelled ‘Q< 0.9’ lists the number of (and percentage) of residues with an average occupancy less than 0.9.

Mol	Chain	Analysed	<RSRZ>	#RSRZ>2	OWAB(Å <sup>2</sup> )	Q<0.9
1	A	295/317 (93%)	-0.67	2 (0%) 89 88	11, 24, 43, 49	0
1	B	295/317 (93%)	-0.68	2 (0%) 89 88	10, 24, 41, 49	0
All	All	590/634 (93%)	-0.67	4 (0%) 89 88	10, 24, 42, 49	0

All (4) RSRZ outliers are listed below:

Mol	Chain	Res	Type	RSRZ
1	B	313	TYR	3.3
1	A	285	LYS	3.2
1	B	107	ARG	2.2
1	A	287	GLU	2.1

### 6.2 Non-standard residues in protein, DNA, RNA chains [i](#)

There are no non-standard protein/DNA/RNA residues in this entry.

### 6.3 Carbohydrates [i](#)

There are no carbohydrates in this entry.

### 6.4 Ligands [i](#)

In the following table, the Atoms column lists the number of modelled atoms in the group and the number defined in the chemical component dictionary. LLDF column lists the quality of electron density of the group with respect to its neighbouring residues in protein, DNA or RNA chains. The B-factors column lists the minimum, median, 95<sup>th</sup> percentile and maximum values of B factors of atoms in the group. The column labelled ‘Q< 0.9’ lists the number of atoms with occupancy less than 0.9.

Mol	Type	Chain	Res	Atoms	RSCC	RSR	LLDF	B-factors( $\text{\AA}^2$ )	Q<0.9
3	ABM	A	1003	23/23	0.90	0.15	3.63	29,43,55,56	0
3	ABM	B	1004	23/23	0.90	0.14	3.18	33,42,56,57	0
2	AP2	A	1002	27/27	0.96	0.09	-0.33	19,27,32,32	0
2	AP2	B	1001	27/27	0.96	0.08	-0.61	30,34,38,39	0

## 6.5 Other polymers [i](#)

There are no such residues in this entry.