



Full wwPDB X-ray Structure Validation Report ⓘ

Jan 31, 2016 – 07:01 PM GMT

PDB ID : 1DMR
Title : OXIDIZED DMSO REDUCTASE FROM RHODOBACTER CAPSULATUS
Authors : Mcalpine, A.S.; Bailey, S.
Deposited on : 1997-04-22
Resolution : 1.82 Å(reported)

This is a Full wwPDB X-ray Structure Validation Report for a publicly released PDB entry.
We welcome your comments at validation@mail.wwpdb.org
A user guide is available at
<http://wwpdb.org/validation/2016/XrayValidationReportHelp>
with specific help available everywhere you see the ⓘ symbol.

The following versions of software and data (see [references ⓘ](#)) were used in the production of this report:

MolProbity : 4.02b-467
Mogul : 1.7 (RC4), CSD as536be (2015)
Xtriage (Phenix) : 1.9-1692
EDS : rb-20026688
Percentile statistics : 20151230.v01 (using entries in the PDB archive December 30th 2015)
Refmac : 5.8.0135
CCP4 : 6.5.0
Ideal geometry (proteins) : Engh & Huber (2001)
Ideal geometry (DNA, RNA) : Parkinson et al. (1996)
Validation Pipeline (wwPDB-VP) : trunk26865

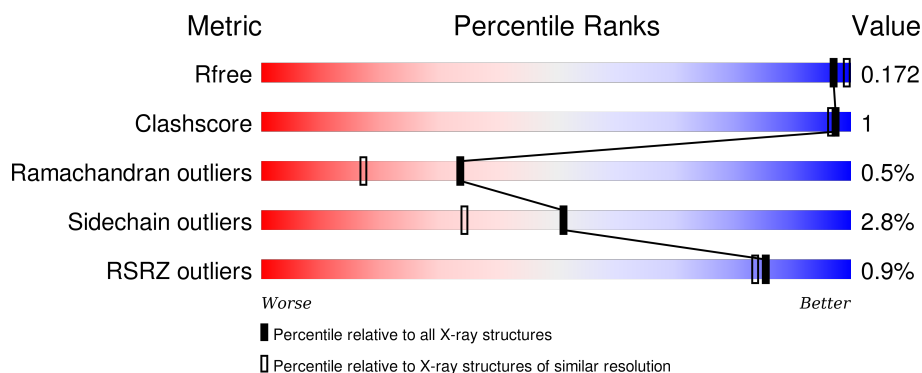
1 Overall quality at a glance

The following experimental techniques were used to determine the structure:

X-RAY DIFFRACTION

The reported resolution of this entry is 1.82 Å.

Percentile scores (ranging between 0-100) for global validation metrics of the entry are shown in the following graphic. The table shows the number of entries on which the scores are based.



Metric	Whole archive (#Entries)	Similar resolution (#Entries, resolution range(Å))
R_{free}	91344	5422 (1.84-1.80)
Clashscore	102246	6347 (1.84-1.80)
Ramachandran outliers	100387	6276 (1.84-1.80)
Sidechain outliers	100360	6276 (1.84-1.80)
RSRZ outliers	91569	5439 (1.84-1.80)

The table below summarises the geometric issues observed across the polymeric chains and their fit to the electron density. The red, orange, yellow and green segments on the lower bar indicate the fraction of residues that contain outliers for ≥ 3 , 2, 1 and 0 types of geometric quality criteria. A grey segment represents the fraction of residues that are not modelled. The numeric value for each fraction is indicated below the corresponding segment, with a dot representing fractions $\leq 5\%$. The upper red bar (where present) indicates the fraction of residues that have poor fit to the electron density. The numeric value is given above the bar.

Mol	Chain	Length	Quality of chain
1	A	823	

The following table lists non-polymeric compounds, carbohydrate monomers and non-standard residues in protein, DNA, RNA chains that are outliers for geometric or electron-density-fit criteria:

Mol	Type	Chain	Res	Chirality	Geometry	Clashes	Electron density
4	O	A	785	-	-	-	X

2 Entry composition

There are 5 unique types of molecules in this entry. The entry contains 6605 atoms, of which 0 are hydrogens and 0 are deuteriums.

In the tables below, the ZeroOcc column contains the number of atoms modelled with zero occupancy, the AltConf column contains the number of residues with at least one atom in alternate conformation and the Trace column contains the number of residues modelled with at most 2 atoms.

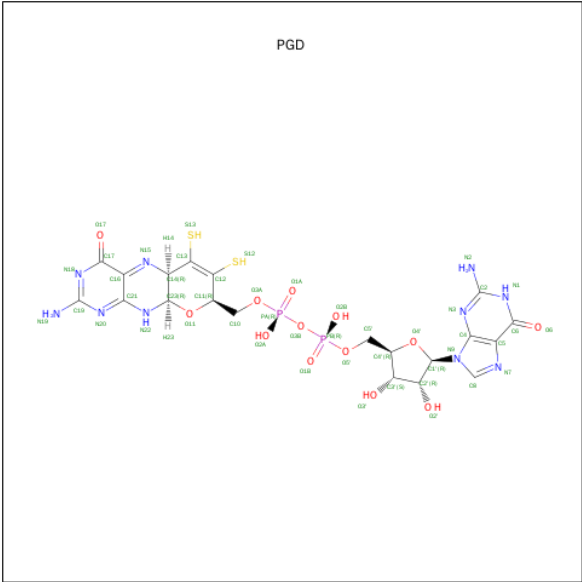
- Molecule 1 is a protein called DMSO REDUCTASE.

Mol	Chain	Residues	Atoms					ZeroOcc	AltConf	Trace
1	A	779	Total	C	N	O	S	88	0	0
			5972	3797	1011	1137	27			

There are 14 discrepancies between the modelled and reference sequences:

Chain	Residue	Modelled	Actual	Comment	Reference
A	39	SER	THR	DIFFERENCES IN MAP	UNP Q52675
A	43	ALA	GLU	DIFFERENCES IN MAP	UNP Q52675
A	107	GLU	GLN	CONFLICT	UNP Q52675
A	234	GLU	ASP	DIFFERENCES IN MAP	UNP Q52675
A	236	ILE	VAL	DIFFERENCES IN MAP	UNP Q52675
A	280	ASP	MET	DIFFERENCES IN MAP	UNP Q52675
A	294	GLU	SER	DIFFERENCES IN MAP	UNP Q52675
A	295	GLY	ASP	DIFFERENCES IN MAP	UNP Q52675
A	312	GLU	ILE	DIFFERENCES IN MAP	UNP Q52675
A	374	ALA	SER	CONFLICT	UNP Q52675
A	456	VAL	ILE	DIFFERENCES IN MAP	UNP Q52675
A	526	ALA	LYS	CONFLICT	UNP Q52675
A	552	ALA	GLY	MISSING FROM GB	UNP Q52675
A	555	GLN	GLU	CONFLICT	UNP Q52675

- Molecule 2 is 2-AMINO-5,6-DIMERCAPTO-7-METHYL-3,7,8A,9-TETRAHYDRO-8-OXA-1,3,9,10-TETRAAZA-ANTHRACEN-4-ONE GUANOSINE DINUCLEOTIDE (three-letter code: PGD) (formula: C₂₀H₂₄N₁₀O₁₃P₂S₂).



Mol	Chain	Residues	Atoms					ZeroOcc	AltConf	
2	A	1	Total	C	N	O	P	S	0	0
			47	20	10	13	2	2		
2	A	1	Total	C	N	O	P	S	0	0
			47	20	10	13	2	2		

- Molecule 3 is MOLYBDENUM(VI) ION (three-letter code: 6MO) (formula: Mo).

Mol	Chain	Residues	Atoms		ZeroOcc	AltConf
3	A	1	Total	Mo	0	0
			1	1		

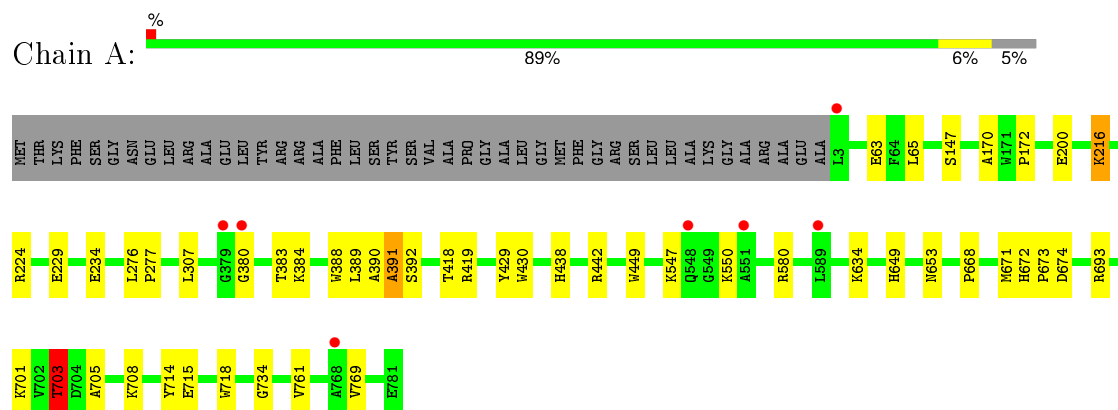
- Molecule 4 is OXYGEN ATOM (three-letter code: O) (formula: O).

Mol	Chain	Residues	Atoms		ZeroOcc	AltConf
4	A	2	Total	O	0	0
			2	2		

- Molecule 5 is water.

Mol	Chain	Residues	Atoms		ZeroOcc	AltConf
5	A	536	Total	O	0	0
			536	536		

- Molecule 1: DMSO REDUCTASE



4 Data and refinement statistics

Property	Value	Source
Space group	P 41 21 2	Depositor
Cell constants a, b, c, α , β , γ	80.88 Å 80.88 Å 229.70 Å 90.00° 90.00° 90.00°	Depositor
Resolution (Å)	20.00 – 1.82 16.53 – 1.82	Depositor EDS
% Data completeness (in resolution range)	97.4 (20.00-1.82) 97.1 (16.53-1.82)	Depositor EDS
R_{merge}	0.08	Depositor
R_{sym}	(Not available)	Depositor
$\langle I/\sigma(I) \rangle$ ¹	3.42 (at 1.82 Å)	Xtriage
Refinement program	REFMAC	Depositor
R, R_{free}	0.147 , 0.184 0.138 , 0.172	Depositor DCC
R_{free} test set	3441 reflections (5.43%)	DCC
Wilson B-factor (Å ²)	13.2	Xtriage
Anisotropy	0.054	Xtriage
Bulk solvent k_{sol} (e/Å ³), B_{sol} (Å ²)	0.34 , 58.0	EDS
Estimated twinning fraction	No twinning to report.	Xtriage
L-test for twinning ²	$\langle L \rangle = 0.49$, $\langle L^2 \rangle = 0.32$	Xtriage
Outliers	0 of 66780 reflections	Xtriage
F_o, F_c correlation	0.97	EDS
Total number of atoms	6605	wwPDB-VP
Average B, all atoms (Å ²)	16.0	wwPDB-VP

Xtriage's analysis on translational NCS is as follows: *The largest off-origin peak in the Patterson function is 3.11% of the height of the origin peak. No significant pseudotranslation is detected.*

¹Intensities estimated from amplitudes.

²Theoretical values of $\langle |L| \rangle$, $\langle L^2 \rangle$ for acentric reflections are 0.5, 0.375 respectively for untwinned datasets, and 0.333, 0.2 for perfectly twinned datasets.

5 Model quality ⓘ

5.1 Standard geometry ⓘ

Bond lengths and bond angles in the following residue types are not validated in this section: 6MO, PGD, O

The Z score for a bond length (or angle) is the number of standard deviations the observed value is removed from the expected value. A bond length (or angle) with $|Z| > 5$ is considered an outlier worth inspection. RMSZ is the root-mean-square of all Z scores of the bond lengths (or angles).

Mol	Chain	Bond lengths		Bond angles	
		RMSZ	# Z >5	RMSZ	# Z >5
1	A	0.39	0/6133	0.99	11/8349 (0.1%)

There are no bond length outliers.

All (11) bond angle outliers are listed below:

Mol	Chain	Res	Type	Atoms	Z	Observed(°)	Ideal(°)
1	A	693	ARG	CD-NE-CZ	27.62	162.27	123.60
1	A	693	ARG	NE-CZ-NH1	-12.72	113.94	120.30
1	A	442	ARG	NE-CZ-NH2	-7.09	116.75	120.30
1	A	383	THR	C-N-CA	6.91	138.97	121.70
1	A	380	GLY	O-C-N	-6.62	112.11	122.70
1	A	693	ARG	NH1-CZ-NH2	6.47	126.52	119.40
1	A	703	THR	CB-CA-C	-5.88	95.74	111.60
1	A	714	TYR	CB-CG-CD2	-5.43	117.74	121.00
1	A	442	ARG	NE-CZ-NH1	5.06	122.83	120.30
1	A	391	ALA	N-CA-C	-5.05	97.36	111.00
1	A	580	ARG	NE-CZ-NH2	-5.05	117.78	120.30

There are no chirality outliers.

There are no planarity outliers.

5.2 Too-close contacts ⓘ

In the following table, the Non-H and H(model) columns list the number of non-hydrogen atoms and hydrogen atoms in the chain respectively. The H(added) column lists the number of hydrogen atoms added and optimized by MolProbity. The Clashes column lists the number of clashes within the asymmetric unit, whereas Symm-Clashes lists symmetry related clashes.

Mol	Chain	Non-H	H(model)	H(added)	Clashes	Symm-Clashes
1	A	5972	0	5776	14	3
2	A	94	0	40	1	0
3	A	1	0	0	0	0
4	A	2	0	0	1	0
5	A	536	0	0	3	3
All	All	6605	0	5816	14	3

The all-atom clashscore is defined as the number of clashes found per 1000 atoms (including hydrogen atoms). The all-atom clashscore for this structure is 1.

All (14) close contacts within the same asymmetric unit are listed below, sorted by their clash magnitude.

Atom-1	Atom-2	Interatomic distance (Å)	Clash overlap (Å)
1:A:216:LYS:HE2	5:A:1225:HOH:O	1.98	0.64
1:A:147:SER:OG	4:A:785:O:O	2.17	0.62
1:A:63:GLU:OE2	5:A:1066:HOH:O	2.16	0.62
1:A:224:ARG:NH1	5:A:1142:HOH:O	2.30	0.59
1:A:703:THR:HG22	1:A:705:ALA:H	1.74	0.53
1:A:649:HIS:CG	2:A:782:PGD:H102	2.47	0.50
1:A:671:MET:HE1	1:A:761:VAL:HG11	1.94	0.49
1:A:668:PRO:HB3	1:A:701:LYS:HE3	1.97	0.47
1:A:653:ASN:ND2	1:A:718:TRP:H	2.13	0.45
1:A:674:ASP:HB2	1:A:708:LYS:HD2	1.99	0.44
1:A:170:ALA:HB1	1:A:172:PRO:HD2	2.01	0.43
1:A:276:LEU:HB3	1:A:277:PRO:HD3	2.03	0.41
1:A:216:LYS:NZ	1:A:234:GLU:OE1	2.54	0.41
1:A:672:HIS:CG	1:A:673:PRO:HD2	2.56	0.41

All (3) symmetry-related close contacts are listed below. The label for Atom-2 includes the symmetry operator and encoded unit-cell translations to be applied.

Atom-1	Atom-2	Interatomic distance (Å)	Clash overlap (Å)
1:A:418:THR:CG2	5:A:1307:HOH:O[5_445]	1.93	0.27
1:A:634:LYS:NZ	5:A:1232:HOH:O[3_555]	1.95	0.25
1:A:229:GLU:CG	5:A:1276:HOH:O[5_455]	2.13	0.07

5.3 Torsion angles [i](#)

5.3.1 Protein backbone [i](#)

In the following table, the Percentiles column shows the percent Ramachandran outliers of the chain as a percentile score with respect to all X-ray entries followed by that with respect to entries of similar resolution.

The Analysed column shows the number of residues for which the backbone conformation was analysed, and the total number of residues.

Mol	Chain	Analysed	Favoured	Allowed	Outliers	Percentiles
1	A	777/823 (94%)	753 (97%)	20 (3%)	4 (0%)	34 17

All (4) Ramachandran outliers are listed below:

Mol	Chain	Res	Type
1	A	384	LYS
1	A	390	ALA
1	A	391	ALA
1	A	734	GLY

5.3.2 Protein sidechains [i](#)

In the following table, the Percentiles column shows the percent sidechain outliers of the chain as a percentile score with respect to all X-ray entries followed by that with respect to entries of similar resolution.

The Analysed column shows the number of residues for which the sidechain conformation was analysed, and the total number of residues.

Mol	Chain	Analysed	Rotameric	Outliers	Percentiles
1	A	617/648 (95%)	600 (97%)	17 (3%)	51 34

All (17) residues with a non-rotameric sidechain are listed below:

Mol	Chain	Res	Type
1	A	65	LEU
1	A	200	GLU
1	A	216	LYS
1	A	307	LEU
1	A	388	TRP
1	A	389	LEU
1	A	392	SER

Continued on next page...

Continued from previous page...

Mol	Chain	Res	Type
1	A	419	ARG
1	A	429	TYR
1	A	430	TRP
1	A	438	HIS
1	A	449	TRP
1	A	547	LYS
1	A	550	LYS
1	A	703	THR
1	A	715	GLU
1	A	769	VAL

Some sidechains can be flipped to improve hydrogen bonding and reduce clashes. All (3) such sidechains are listed below:

Mol	Chain	Res	Type
1	A	241	GLN
1	A	548	GLN
1	A	653	ASN

5.3.3 RNA ⓘ

There are no RNA molecules in this entry.

5.4 Non-standard residues in protein, DNA, RNA chains ⓘ

There are no non-standard protein/DNA/RNA residues in this entry.

5.5 Carbohydrates ⓘ

There are no carbohydrates in this entry.

5.6 Ligand geometry ⓘ

Of 5 ligands modelled in this entry, 3 are monoatomic - leaving 2 for Mogul analysis.

In the following table, the Counts columns list the number of bonds (or angles) for which Mogul statistics could be retrieved, the number of bonds (or angles) that are observed in the model and the number of bonds (or angles) that are defined in the chemical component dictionary. The Link column lists molecule types, if any, to which the group is linked. The Z score for a bond length (or angle) is the number of standard deviations the observed value is removed from the expected

value. A bond length (or angle) with $|Z| > 2$ is considered an outlier worth inspection. RMSZ is the root-mean-square of all Z scores of the bond lengths (or angles).

Mol	Type	Chain	Res	Link	Bond lengths			Bond angles		
					Counts	RMSZ	$\# Z > 2$	Counts	RMSZ	$\# Z > 2$
2	PGD	A	782	3,4	34,52,52	2.67	13 (38%)	39,81,81	1.91	8 (20%)
2	PGD	A	783	3	34,52,52	2.68	13 (38%)	39,81,81	2.10	7 (17%)

In the following table, the Chirals column lists the number of chiral outliers, the number of chiral centers analysed, the number of these observed in the model and the number defined in the chemical component dictionary. Similar counts are reported in the Torsion and Rings columns. '-' means no outliers of that kind were identified.

Mol	Type	Chain	Res	Link	Chirals	Torsions	Rings
2	PGD	A	782	3,4	-	0/18/82/82	0/6/6/6
2	PGD	A	783	3	-	0/18/82/82	0/6/6/6

All (26) bond length outliers are listed below:

Mol	Chain	Res	Type	Atoms	Z	Observed(Å)	Ideal(Å)
2	A	783	PGD	O11-C23	-2.40	1.40	1.43
2	A	782	PGD	C5-C4	-2.10	1.35	1.40
2	A	783	PGD	C6-N1	2.04	1.36	1.33
2	A	782	PGD	C6-N1	2.18	1.37	1.33
2	A	783	PGD	O4'-C1'	2.28	1.44	1.41
2	A	782	PGD	C23-C14	2.36	1.54	1.52
2	A	782	PGD	C14-N15	2.50	1.48	1.46
2	A	783	PGD	PB-O5'	2.94	1.72	1.59
2	A	782	PGD	PA-O3A	3.00	1.72	1.59
2	A	782	PGD	PB-O2B	3.11	1.68	1.54
2	A	782	PGD	PB-O5'	3.25	1.73	1.59
2	A	783	PGD	PA-O2A	3.30	1.69	1.54
2	A	783	PGD	PA-O3A	3.44	1.74	1.59
2	A	783	PGD	C2-N2	3.54	1.41	1.34
2	A	783	PGD	PB-O2B	3.56	1.70	1.54
2	A	783	PGD	C23-C14	3.56	1.56	1.52
2	A	782	PGD	C2-N2	3.65	1.41	1.34
2	A	782	PGD	PA-O2A	3.86	1.71	1.54
2	A	782	PGD	PA-O1A	4.42	1.67	1.51
2	A	783	PGD	PA-O1A	5.20	1.70	1.51
2	A	783	PGD	PB-O1B	5.53	1.71	1.51
2	A	783	PGD	C16-N15	5.77	1.44	1.28
2	A	782	PGD	PB-O1B	5.83	1.72	1.51
2	A	782	PGD	C16-N15	6.13	1.45	1.28

Continued on next page...

Continued from previous page...

Mol	Chain	Res	Type	Atoms	Z	Observed(Å)	Ideal(Å)
2	A	783	PGD	C21-N20	6.58	1.36	1.28
2	A	782	PGD	C21-N20	6.74	1.36	1.28

All (15) bond angle outliers are listed below:

Mol	Chain	Res	Type	Atoms	Z	Observed(°)	Ideal(°)
2	A	783	PGD	C4'-O4'-C1'	-6.02	103.11	109.72
2	A	783	PGD	C5-C6-N1	-4.88	116.92	123.59
2	A	782	PGD	C5-C6-N1	-4.43	117.53	123.59
2	A	783	PGD	N3-C2-N1	-4.28	120.93	127.44
2	A	782	PGD	C4'-O4'-C1'	-3.82	105.52	109.72
2	A	782	PGD	N3-C2-N1	-3.13	122.68	127.44
2	A	782	PGD	C21-C16-N15	-2.92	117.14	124.42
2	A	782	PGD	O17-C17-N18	-2.22	117.52	120.41
2	A	783	PGD	C21-C16-N15	-2.17	119.02	124.42
2	A	782	PGD	C16-C21-N22	2.12	122.27	116.51
2	A	783	PGD	C16-C17-N18	2.17	119.70	117.83
2	A	782	PGD	C6-N1-C2	3.07	120.20	115.94
2	A	783	PGD	C6-N1-C2	4.65	122.39	115.94
2	A	783	PGD	C17-C16-N15	5.72	123.33	117.87
2	A	782	PGD	C17-C16-N15	6.54	124.11	117.87

There are no chirality outliers.

There are no torsion outliers.

There are no ring outliers.

1 monomer is involved in 1 short contact:

Mol	Chain	Res	Type	Clashes	Symm-Clashes
2	A	782	PGD	1	0

5.7 Other polymers [i](#)

There are no such residues in this entry.

5.8 Polymer linkage issues [i](#)

There are no chain breaks in this entry.

6 Fit of model and data [i](#)

6.1 Protein, DNA and RNA chains [i](#)

In the following table, the column labelled ‘#RSRZ> 2’ contains the number (and percentage) of RSRZ outliers, followed by percent RSRZ outliers for the chain as percentile scores relative to all X-ray entries and entries of similar resolution. The OWAB column contains the minimum, median, 95th percentile and maximum values of the occupancy-weighted average B-factor per residue. The column labelled ‘Q< 0.9’ lists the number of (and percentage) of residues with an average occupancy less than 0.9.

Mol	Chain	Analysed	<RSRZ>	#RSRZ>2	OWAB(Å ²)	Q<0.9
1	A	766/823 (93%)	-0.61	7 (0%) 85 84	7, 13, 27, 44	0

All (7) RSRZ outliers are listed below:

Mol	Chain	Res	Type	RSRZ
1	A	380	GLY	4.1
1	A	551	ALA	3.1
1	A	3	LEU	2.8
1	A	379	GLY	2.6
1	A	768	ALA	2.5
1	A	548	GLN	2.3
1	A	589	LEU	2.1

6.2 Non-standard residues in protein, DNA, RNA chains [i](#)

There are no non-standard protein/DNA/RNA residues in this entry.

6.3 Carbohydrates [i](#)

There are no carbohydrates in this entry.

6.4 Ligands [i](#)

In the following table, the Atoms column lists the number of modelled atoms in the group and the number defined in the chemical component dictionary. LLDF column lists the quality of electron density of the group with respect to its neighbouring residues in protein, DNA or RNA chains. The B-factors column lists the minimum, median, 95th percentile and maximum values of B factors of atoms in the group. The column labelled ‘Q< 0.9’ lists the number of atoms with occupancy less than 0.9.

Mol	Type	Chain	Res	Atoms	RSCC	RSR	LLDF	B-factors(\AA^2)	Q<0.9
4	O	A	785	1/1	1.00	0.09	2.86	12,12,12,12	0
2	PGD	A	782	47/47	0.98	0.06	0.34	4,7,9,10	0
2	PGD	A	783	47/47	0.98	0.06	0.03	5,8,10,10	0
3	6MO	A	784	1/1	1.00	0.05	-2.35	12,12,12,12	0
4	O	A	786	1/1	0.99	0.13	-	9,9,9,9	0

6.5 Other polymers [i](#)

There are no such residues in this entry.