



Full wwPDB X-ray Structure Validation Report ⓘ

Mar 17, 2016 – 06:55 PM EDT

PDB ID : 5DND
Title : Crystal structure of the Asn-bound guinea pig L-asparaginase 1 catalytic domain active site mutant T116A
Authors : Schalk, A.M.; Lavie, A.
Deposited on : 2015-09-09
Resolution : 2.29 Å(reported)

This is a Full wwPDB X-ray Structure Validation Report for a publicly released PDB entry.
We welcome your comments at validation@mail.wwpdb.org
A user guide is available at
<http://wwpdb.org/validation/2016/XrayValidationReportHelp>
with specific help available everywhere you see the ⓘ symbol.

The following versions of software and data (see [references ⓘ](#)) were used in the production of this report:

MolProbity : 4.02b-467
Mogul : 1.7.1 (RC1), CSD as537be (2016)
Xtriage (Phenix) : 1.9-1692
EDS : rb-20027107
Percentile statistics : 20151230.v01 (using entries in the PDB archive December 30th 2015)
Refmac : 5.8.0122
CCP4 : 6.5.0
Ideal geometry (proteins) : Engh & Huber (2001)
Ideal geometry (DNA, RNA) : Parkinson et al. (1996)
Validation Pipeline (wwPDB-VP) : rb-20027107

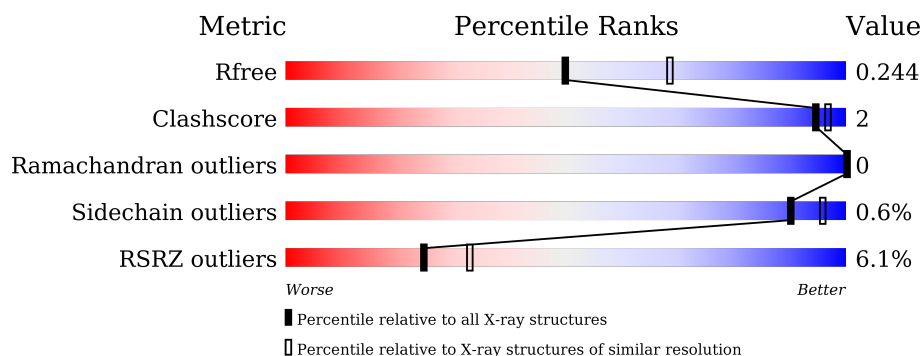
1 Overall quality at a glance

The following experimental techniques were used to determine the structure:

X-RAY DIFFRACTION

The reported resolution of this entry is 2.29 Å.

Percentile scores (ranging between 0-100) for global validation metrics of the entry are shown in the following graphic. The table shows the number of entries on which the scores are based.



Metric	Whole archive (#Entries)	Similar resolution (#Entries, resolution range(Å))
R_{free}	91344	3852 (2.30-2.30)
Clashscore	102246	4452 (2.30-2.30)
Ramachandran outliers	100387	4410 (2.30-2.30)
Sidechain outliers	100360	4409 (2.30-2.30)
RSRZ outliers	91569	3857 (2.30-2.30)

The table below summarises the geometric issues observed across the polymeric chains and their fit to the electron density. The red, orange, yellow and green segments on the lower bar indicate the fraction of residues that contain outliers for ≥ 3 , 2, 1 and 0 types of geometric quality criteria. A grey segment represents the fraction of residues that are not modelled. The numeric value for each fraction is indicated below the corresponding segment, with a dot representing fractions $\leq 5\%$. The upper red bar (where present) indicates the fraction of residues that have poor fit to the electron density. The numeric value is given above the bar.

Mol	Chain	Length	Quality of chain
1	A	588	<div> <div>3%</div> <div>57%</div> <div>40%</div> </div>
1	B	588	<div> <div>4%</div> <div>58%</div> <div>40%</div> </div>
1	C	588	<div> <div>3%</div> <div>58%</div> <div>40%</div> </div>
1	D	588	<div> <div>4%</div> <div>58%</div> <div>39%</div> </div>

The following table lists non-polymeric compounds, carbohydrate monomers and non-standard residues in protein, DNA, RNA chains that are outliers for geometric or electron-density-fit crite-

ria:

Mol	Type	Chain	Res	Chirality	Geometry	Clashes	Electron density
3	EDO	C	602	-	-	-	X

2 Entry composition

There are 4 unique types of molecules in this entry. The entry contains 11313 atoms, of which 0 are hydrogens and 0 are deuteriums.

In the tables below, the ZeroOcc column contains the number of atoms modelled with zero occupancy, the AltConf column contains the number of residues with at least one atom in alternate conformation and the Trace column contains the number of residues modelled with at most 2 atoms.

- Molecule 1 is a protein called L-asparaginase.

Mol	Chain	Residues	Atoms					ZeroOcc	AltConf	Trace
1	A	353	Total	C	N	O	S	0	0	0
			2700	1729	466	489	16			
1	B	355	Total	C	N	O	S	0	0	0
			2715	1737	469	493	16			
1	C	354	Total	C	N	O	S	0	1	0
			2719	1743	469	491	16			
1	D	357	Total	C	N	O	S	0	0	0
			2728	1744	471	497	16			

There are 96 discrepancies between the modelled and reference sequences:

Chain	Residue	Modelled	Actual	Comment	Reference
A	-22	MET	-	initiating methionine	UNP H0W0T5
A	-21	GLY	-	expression tag	UNP H0W0T5
A	-20	SER	-	expression tag	UNP H0W0T5
A	-19	SER	-	expression tag	UNP H0W0T5
A	-18	HIS	-	expression tag	UNP H0W0T5
A	-17	HIS	-	expression tag	UNP H0W0T5
A	-16	HIS	-	expression tag	UNP H0W0T5
A	-15	HIS	-	expression tag	UNP H0W0T5
A	-14	HIS	-	expression tag	UNP H0W0T5
A	-13	HIS	-	expression tag	UNP H0W0T5
A	-12	SER	-	expression tag	UNP H0W0T5
A	-11	SER	-	expression tag	UNP H0W0T5
A	-10	GLY	-	expression tag	UNP H0W0T5
A	-9	GLY	-	expression tag	UNP H0W0T5
A	-8	ASN	-	expression tag	UNP H0W0T5
A	-7	GLU	-	expression tag	UNP H0W0T5
A	-6	ASN	-	expression tag	UNP H0W0T5
A	-5	LEU	-	expression tag	UNP H0W0T5
A	-4	TYR	-	expression tag	UNP H0W0T5
A	-3	PHE	-	expression tag	UNP H0W0T5
A	-2	GLN	-	expression tag	UNP H0W0T5

Continued on next page...

Continued from previous page...

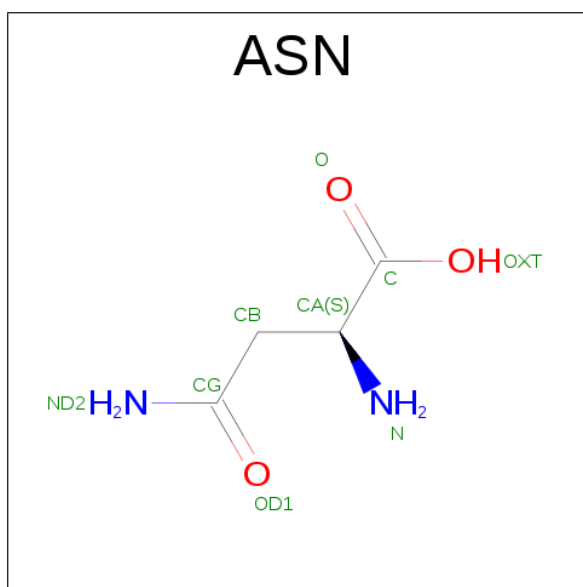
Chain	Residue	Modelled	Actual	Comment	Reference
A	-1	GLY	-	expression tag	UNP H0W0T5
A	0	HIS	-	expression tag	UNP H0W0T5
A	116	ALA	THR	engineered mutation	UNP H0W0T5
B	-22	MET	-	initiating methionine	UNP H0W0T5
B	-21	GLY	-	expression tag	UNP H0W0T5
B	-20	SER	-	expression tag	UNP H0W0T5
B	-19	SER	-	expression tag	UNP H0W0T5
B	-18	HIS	-	expression tag	UNP H0W0T5
B	-17	HIS	-	expression tag	UNP H0W0T5
B	-16	HIS	-	expression tag	UNP H0W0T5
B	-15	HIS	-	expression tag	UNP H0W0T5
B	-14	HIS	-	expression tag	UNP H0W0T5
B	-13	HIS	-	expression tag	UNP H0W0T5
B	-12	SER	-	expression tag	UNP H0W0T5
B	-11	SER	-	expression tag	UNP H0W0T5
B	-10	GLY	-	expression tag	UNP H0W0T5
B	-9	GLY	-	expression tag	UNP H0W0T5
B	-8	ASN	-	expression tag	UNP H0W0T5
B	-7	GLU	-	expression tag	UNP H0W0T5
B	-6	ASN	-	expression tag	UNP H0W0T5
B	-5	LEU	-	expression tag	UNP H0W0T5
B	-4	TYR	-	expression tag	UNP H0W0T5
B	-3	PHE	-	expression tag	UNP H0W0T5
B	-2	GLN	-	expression tag	UNP H0W0T5
B	-1	GLY	-	expression tag	UNP H0W0T5
B	0	HIS	-	expression tag	UNP H0W0T5
B	116	ALA	THR	engineered mutation	UNP H0W0T5
C	-22	MET	-	initiating methionine	UNP H0W0T5
C	-21	GLY	-	expression tag	UNP H0W0T5
C	-20	SER	-	expression tag	UNP H0W0T5
C	-19	SER	-	expression tag	UNP H0W0T5
C	-18	HIS	-	expression tag	UNP H0W0T5
C	-17	HIS	-	expression tag	UNP H0W0T5
C	-16	HIS	-	expression tag	UNP H0W0T5
C	-15	HIS	-	expression tag	UNP H0W0T5
C	-14	HIS	-	expression tag	UNP H0W0T5
C	-13	HIS	-	expression tag	UNP H0W0T5
C	-12	SER	-	expression tag	UNP H0W0T5
C	-11	SER	-	expression tag	UNP H0W0T5
C	-10	GLY	-	expression tag	UNP H0W0T5
C	-9	GLY	-	expression tag	UNP H0W0T5
C	-8	ASN	-	expression tag	UNP H0W0T5

Continued on next page...

Continued from previous page...

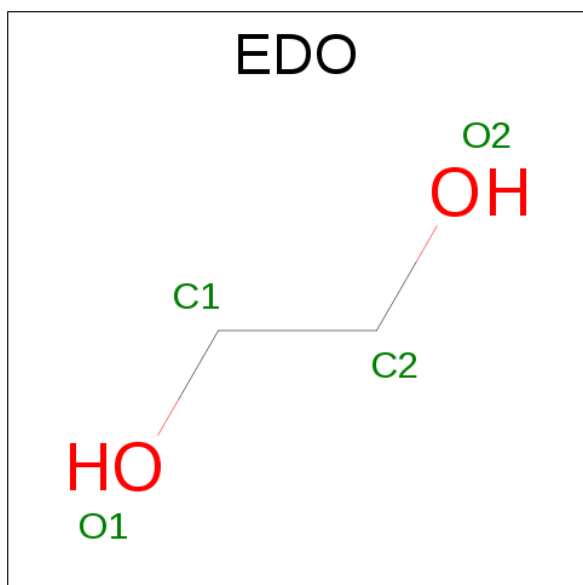
Chain	Residue	Modelled	Actual	Comment	Reference
C	-7	GLU	-	expression tag	UNP H0W0T5
C	-6	ASN	-	expression tag	UNP H0W0T5
C	-5	LEU	-	expression tag	UNP H0W0T5
C	-4	TYR	-	expression tag	UNP H0W0T5
C	-3	PHE	-	expression tag	UNP H0W0T5
C	-2	GLN	-	expression tag	UNP H0W0T5
C	-1	GLY	-	expression tag	UNP H0W0T5
C	0	HIS	-	expression tag	UNP H0W0T5
C	116	ALA	THR	engineered mutation	UNP H0W0T5
D	-22	MET	-	initiating methionine	UNP H0W0T5
D	-21	GLY	-	expression tag	UNP H0W0T5
D	-20	SER	-	expression tag	UNP H0W0T5
D	-19	SER	-	expression tag	UNP H0W0T5
D	-18	HIS	-	expression tag	UNP H0W0T5
D	-17	HIS	-	expression tag	UNP H0W0T5
D	-16	HIS	-	expression tag	UNP H0W0T5
D	-15	HIS	-	expression tag	UNP H0W0T5
D	-14	HIS	-	expression tag	UNP H0W0T5
D	-13	HIS	-	expression tag	UNP H0W0T5
D	-12	SER	-	expression tag	UNP H0W0T5
D	-11	SER	-	expression tag	UNP H0W0T5
D	-10	GLY	-	expression tag	UNP H0W0T5
D	-9	GLY	-	expression tag	UNP H0W0T5
D	-8	ASN	-	expression tag	UNP H0W0T5
D	-7	GLU	-	expression tag	UNP H0W0T5
D	-6	ASN	-	expression tag	UNP H0W0T5
D	-5	LEU	-	expression tag	UNP H0W0T5
D	-4	TYR	-	expression tag	UNP H0W0T5
D	-3	PHE	-	expression tag	UNP H0W0T5
D	-2	GLN	-	expression tag	UNP H0W0T5
D	-1	GLY	-	expression tag	UNP H0W0T5
D	0	HIS	-	expression tag	UNP H0W0T5
D	116	ALA	THR	engineered mutation	UNP H0W0T5

- Molecule 2 is ASPARAGINE (three-letter code: ASN) (formula: C₄H₈N₂O₃).



Mol	Chain	Residues	Atoms				ZeroOcc	AltConf
2	A	1	Total	C	N	O	0	0
			9	4	2	3		
2	B	1	Total	C	N	O	0	0
			9	4	2	3		
2	C	1	Total	C	N	O	0	0
			9	4	2	3		
2	D	1	Total	C	N	O	0	0
			9	4	2	3		

- Molecule 3 is 1,2-ETHANEDIOL (three-letter code: EDO) (formula: C₂H₆O₂).

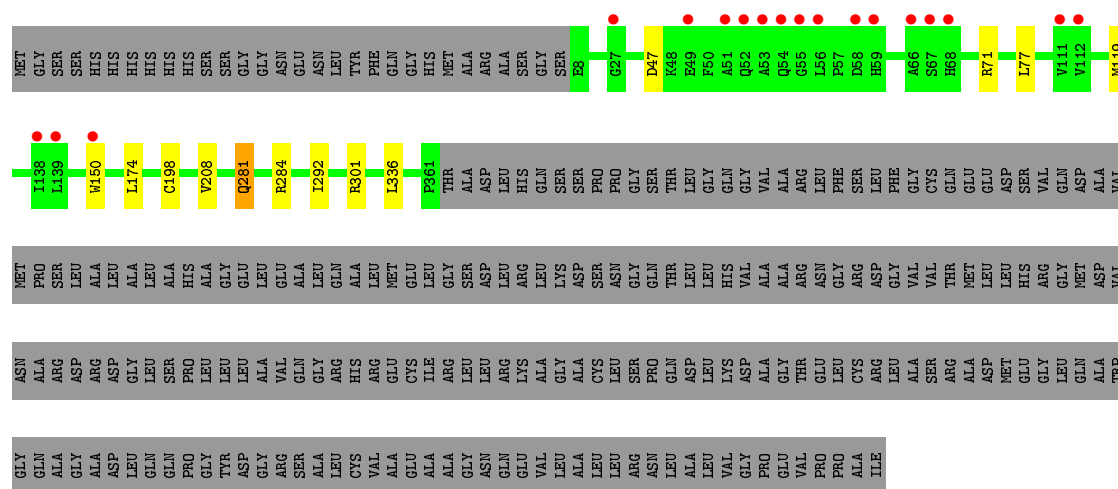


Mol	Chain	Residues	Atoms	ZeroOcc	AltConf
3	B	1	Total C O 4 2 2	0	0
3	C	1	Total C O 4 2 2	0	0
3	D	1	Total C O 4 2 2	0	0
3	D	1	Total C O 4 2 2	0	0

- Molecule 4 is water.

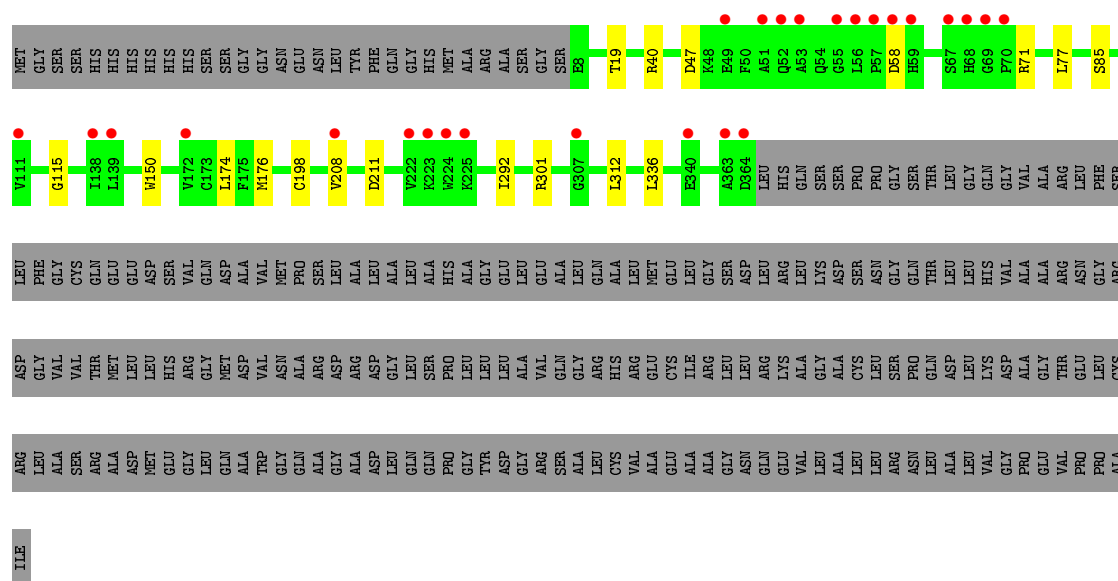
Mol	Chain	Residues	Atoms	ZeroOcc	AltConf
4	A	113	Total O 113 113	0	0
4	B	110	Total O 110 110	0	0
4	C	97	Total O 97 97	0	0
4	D	79	Total O 79 79	0	0

Chain C: 



- Molecule 1: L-asparaginase

Chain D: 



4 Data and refinement statistics

Property	Value	Source
Space group	I 2 2 2	Depositor
Cell constants a, b, c, α , β , γ	123.86Å 154.78Å 157.28Å 90.00° 90.00° 90.00°	Depositor
Resolution (Å)	30.00 – 2.29 28.81 – 2.29	Depositor EDS
% Data completeness (in resolution range)	97.7 (30.00-2.29) 97.8 (28.81-2.29)	Depositor EDS
R_{merge}	(Not available)	Depositor
R_{sym}	0.12	Depositor
$\langle I/\sigma(I) \rangle$ ¹	1.39 (at 2.29Å)	Xtriage
Refinement program	REFMAC 5.8.0073	Depositor
R, R_{free}	0.208 , 0.242 0.213 , 0.244	Depositor DCC
R_{free} test set	3316 reflections (5.26%)	DCC
Wilson B-factor (Å ²)	34.5	Xtriage
Anisotropy	0.091	Xtriage
Bulk solvent k_{sol} (e/Å ³), B_{sol} (Å ²)	0.33 , 16.3	EDS
Estimated twinning fraction	0.015 for -h,-l,-k	Xtriage
L-test for twinning ²	$\langle L \rangle = 0.48$, $\langle L^2 \rangle = 0.31$	Xtriage
Outliers	2 of 66962 reflections (0.003%)	Xtriage
F_o, F_c correlation	0.95	EDS
Total number of atoms	11313	wwPDB-VP
Average B, all atoms (Å ²)	37.0	wwPDB-VP

Xtriage's analysis on translational NCS is as follows: *The largest off-origin peak in the Patterson function is 5.28% of the height of the origin peak. No significant pseudotranslation is detected.*

¹Intensities estimated from amplitudes.

²Theoretical values of $\langle |L| \rangle$, $\langle L^2 \rangle$ for acentric reflections are 0.5, 0.375 respectively for untwinned datasets, and 0.333, 0.2 for perfectly twinned datasets.

5 Model quality

5.1 Standard geometry

Bond lengths and bond angles in the following residue types are not validated in this section: EDO

The Z score for a bond length (or angle) is the number of standard deviations the observed value is removed from the expected value. A bond length (or angle) with $|Z| > 5$ is considered an outlier worth inspection. RMSZ is the root-mean-square of all Z scores of the bond lengths (or angles).

Mol	Chain	Bond lengths		Bond angles	
		RMSZ	$\# Z > 5$	RMSZ	$\# Z > 5$
1	A	0.55	0/2756	0.68	0/3746
1	B	0.53	0/2772	0.67	0/3770
1	C	0.54	0/2781	0.68	1/3783 (0.0%)
1	D	0.53	0/2785	0.67	1/3788 (0.0%)
All	All	0.54	0/11094	0.67	2/15087 (0.0%)

Chiral center outliers are detected by calculating the chiral volume of a chiral center and verifying if the center is modelled as a planar moiety or with the opposite hand. A planarity outlier is detected by checking planarity of atoms in a peptide group, atoms in a mainchain group or atoms of a sidechain that are expected to be planar.

Mol	Chain	#Chirality outliers	#Planarity outliers
1	A	0	1

There are no bond length outliers.

All (2) bond angle outliers are listed below:

Mol	Chain	Res	Type	Atoms	Z	Observed(°)	Ideal(°)
1	D	301	ARG	NE-CZ-NH2	6.53	123.56	120.30
1	C	301	ARG	NE-CZ-NH2	5.61	123.11	120.30

There are no chirality outliers.

All (1) planarity outliers are listed below:

Mol	Chain	Res	Type	Group
1	A	65	PRO	Peptide

5.2 Too-close contacts ⓘ

In the following table, the Non-H and H(model) columns list the number of non-hydrogen atoms and hydrogen atoms in the chain respectively. The H(added) column lists the number of hydrogen atoms added and optimized by MolProbity. The Clashes column lists the number of clashes within the asymmetric unit, whereas Symm-Clashes lists symmetry related clashes.

Mol	Chain	Non-H	H(model)	H(added)	Clashes	Symm-Clashes
1	A	2700	0	2772	12	1
1	B	2715	0	2786	12	1
1	C	2719	0	2789	11	0
1	D	2728	0	2795	13	0
2	A	9	0	5	0	0
2	B	9	0	5	1	0
2	C	9	0	5	0	0
2	D	9	0	5	1	0
3	B	4	0	6	0	0
3	C	4	0	6	0	0
3	D	8	0	12	0	0
4	A	113	0	0	1	0
4	B	110	0	0	1	0
4	C	97	0	0	0	0
4	D	79	0	0	1	0
All	All	11313	0	11186	38	1

The all-atom clashscore is defined as the number of clashes found per 1000 atoms (including hydrogen atoms). The all-atom clashscore for this structure is 2.

All (38) close contacts within the same asymmetric unit are listed below, sorted by their clash magnitude.

Atom-1	Atom-2	Interatomic distance (Å)	Clash overlap (Å)
1:C:281:GLN:OE1	1:C:284:ARG:NH2	2.00	0.94
1:C:150[B]:TRP:NE1	1:D:208:VAL:HG11	2.05	0.71
1:A:150:TRP:NE1	1:B:208:VAL:HG11	2.12	0.64
1:A:150:TRP:NE1	1:B:208:VAL:CG1	2.60	0.64
1:C:150[B]:TRP:NE1	1:D:208:VAL:CG1	2.63	0.61
1:C:47:ASP:OD2	1:C:71:ARG:NH2	2.38	0.57
1:B:47:ASP:OD2	1:B:71:ARG:NH2	2.38	0.57
1:A:47:ASP:OD2	1:A:71:ARG:NH2	2.38	0.56
1:D:47:ASP:OD2	1:D:71:ARG:NH2	2.38	0.56
1:A:208:VAL:HG21	1:B:150:TRP:CZ2	2.41	0.55
1:B:292:ILE:HD12	1:B:336:LEU:HD21	1.89	0.54
1:D:292:ILE:HD12	1:D:336:LEU:HD21	1.90	0.54

Continued on next page...

Continued from previous page...

Atom-1	Atom-2	Interatomic distance (Å)	Clash overlap (Å)
1:A:150:TRP:HE1	1:B:208:VAL:HG12	1.72	0.54
1:C:119:MET:SD	1:C:174:LEU:HD13	2.48	0.54
1:C:150[B]:TRP:HE1	1:D:208:VAL:CG1	2.22	0.53
1:A:66:ALA:HA	4:A:889:HOH:O	2.10	0.51
1:A:292:ILE:HD12	1:A:336:LEU:HD21	1.92	0.51
1:C:292:ILE:HD12	1:C:336:LEU:HD21	1.93	0.50
1:D:40:ARG:NH1	1:D:58:ASP:O	2.45	0.49
1:C:150[B]:TRP:HE1	1:D:208:VAL:HG12	1.77	0.49
1:D:77:LEU:C	1:D:77:LEU:HD23	2.33	0.48
1:B:134:HIS:CD2	4:B:741:HOH:O	2.68	0.47
1:A:150:TRP:NE1	1:B:208:VAL:HG12	2.27	0.47
1:A:174:LEU:HD21	1:A:176:MET:HG3	1.97	0.47
1:C:119:MET:SD	1:C:174:LEU:CD1	3.03	0.47
1:B:174:LEU:HD21	1:B:176:MET:HG3	1.98	0.45
1:D:312:LEU:HD23	4:D:755:HOH:O	2.18	0.44
1:B:19:THR:OG1	2:B:601:ASN:CG	2.56	0.43
1:D:174:LEU:HD21	1:D:176:MET:HG3	1.98	0.43
1:B:77:LEU:C	1:B:77:LEU:HD23	2.38	0.43
1:C:77:LEU:C	1:C:77:LEU:HD23	2.39	0.42
1:D:85:SER:HB3	1:D:115:GLY:HA3	2.02	0.42
1:A:77:LEU:C	1:A:77:LEU:HD23	2.40	0.42
1:B:85:SER:HB3	1:B:115:GLY:HA3	2.02	0.42
1:C:208:VAL:HG21	1:D:150:TRP:CZ2	2.55	0.41
1:D:19:THR:OG1	2:D:601:ASN:CG	2.58	0.41
1:A:85:SER:HB3	1:A:115:GLY:HA3	2.03	0.40
1:A:159:GLY:HA3	1:A:175:PHE:CE2	2.57	0.40

All (1) symmetry-related close contacts are listed below. The label for Atom-2 includes the symmetry operator and encoded unit-cell translations to be applied.

Atom-1	Atom-2	Interatomic distance (Å)	Clash overlap (Å)
1:A:348:GLU:OE1	1:B:342:SER:OG[8_555]	2.11	0.09

5.3 Torsion angles ⓘ

5.3.1 Protein backbone ⓘ

In the following table, the Percentiles column shows the percent Ramachandran outliers of the chain as a percentile score with respect to all X-ray entries followed by that with respect to entries of similar resolution.

The Analysed column shows the number of residues for which the backbone conformation was analysed, and the total number of residues.

Mol	Chain	Analysed	Favoured	Allowed	Outliers	Percentiles	
1	A	349/588 (59%)	340 (97%)	9 (3%)	0	100	100
1	B	353/588 (60%)	346 (98%)	7 (2%)	0	100	100
1	C	353/588 (60%)	345 (98%)	8 (2%)	0	100	100
1	D	355/588 (60%)	345 (97%)	10 (3%)	0	100	100
All	All	1410/2352 (60%)	1376 (98%)	34 (2%)	0	100	100

There are no Ramachandran outliers to report.

5.3.2 Protein sidechains ⓘ

In the following table, the Percentiles column shows the percent sidechain outliers of the chain as a percentile score with respect to all X-ray entries followed by that with respect to entries of similar resolution.

The Analysed column shows the number of residues for which the sidechain conformation was analysed, and the total number of residues.

Mol	Chain	Analysed	Rotameric	Outliers	Percentiles	
1	A	294/473 (62%)	292 (99%)	2 (1%)	88	95
1	B	296/473 (63%)	295 (100%)	1 (0%)	94	98
1	C	296/473 (63%)	294 (99%)	2 (1%)	88	95
1	D	297/473 (63%)	295 (99%)	2 (1%)	88	95
All	All	1183/1892 (62%)	1176 (99%)	7 (1%)	90	96

All (7) residues with a non-rotameric sidechain are listed below:

Mol	Chain	Res	Type
1	A	198	CYS
1	A	211	ASP
1	B	198	CYS
1	C	198	CYS
1	C	281	GLN
1	D	198	CYS
1	D	211	ASP

Some sidechains can be flipped to improve hydrogen bonding and reduce clashes. All (1) such sidechains are listed below:

Mol	Chain	Res	Type
1	A	80	GLN

5.3.3 RNA [i](#)

There are no RNA molecules in this entry.

5.4 Non-standard residues in protein, DNA, RNA chains [i](#)

There are no non-standard protein/DNA/RNA residues in this entry.

5.5 Carbohydrates [i](#)

There are no carbohydrates in this entry.

5.6 Ligand geometry [i](#)

8 ligands are modelled in this entry.

In the following table, the Counts columns list the number of bonds (or angles) for which Mogul statistics could be retrieved, the number of bonds (or angles) that are observed in the model and the number of bonds (or angles) that are defined in the chemical component dictionary. The Link column lists molecule types, if any, to which the group is linked. The Z score for a bond length (or angle) is the number of standard deviations the observed value is removed from the expected value. A bond length (or angle) with $|Z| > 2$ is considered an outlier worth inspection. RMSZ is the root-mean-square of all Z scores of the bond lengths (or angles).

Mol	Type	Chain	Res	Link	Bond lengths			Bond angles		
					Counts	RMSZ	$\# Z > 2$	Counts	RMSZ	$\# Z > 2$
2	ASN	A	700	-	5,8,8	0.22	0	5,10,10	0.21	0
2	ASN	B	601	-	5,8,8	0.39	0	5,10,10	0.25	0
3	EDO	B	602	-	3,3,3	0.59	0	2,2,2	0.25	0
2	ASN	C	601	-	5,8,8	0.47	0	5,10,10	0.32	0
3	EDO	C	602	-	3,3,3	0.59	0	2,2,2	0.29	0
2	ASN	D	601	-	5,8,8	0.38	0	5,10,10	0.28	0
3	EDO	D	602	-	3,3,3	0.55	0	2,2,2	0.13	0
3	EDO	D	603	-	3,3,3	0.60	0	2,2,2	0.09	0

In the following table, the Chirals column lists the number of chiral outliers, the number of chiral centers analysed, the number of these observed in the model and the number defined in the chemical component dictionary. Similar counts are reported in the Torsion and Rings columns. '-' means no outliers of that kind were identified.

Mol	Type	Chain	Res	Link	Chirals	Torsions	Rings
2	ASN	A	700	-	-	0/4/8/8	0/0/0/0
2	ASN	B	601	-	-	0/4/8/8	0/0/0/0
3	EDO	B	602	-	-	0/1/1/1	0/0/0/0
2	ASN	C	601	-	-	0/4/8/8	0/0/0/0
3	EDO	C	602	-	-	0/1/1/1	0/0/0/0
2	ASN	D	601	-	-	0/4/8/8	0/0/0/0
3	EDO	D	602	-	-	0/1/1/1	0/0/0/0
3	EDO	D	603	-	-	0/1/1/1	0/0/0/0

There are no bond length outliers.

There are no bond angle outliers.

There are no chirality outliers.

There are no torsion outliers.

There are no ring outliers.

2 monomers are involved in 2 short contacts:

Mol	Chain	Res	Type	Clashes	Symm-Clashes
2	B	601	ASN	1	0
2	D	601	ASN	1	0

5.7 Other polymers [i](#)

There are no such residues in this entry.

5.8 Polymer linkage issues [i](#)

There are no chain breaks in this entry.

6 Fit of model and data

6.1 Protein, DNA and RNA chains

In the following table, the column labelled ‘#RSRZ> 2’ contains the number (and percentage) of RSRZ outliers, followed by percent RSRZ outliers for the chain as percentile scores relative to all X-ray entries and entries of similar resolution. The OWAB column contains the minimum, median, 95th percentile and maximum values of the occupancy-weighted average B-factor per residue. The column labelled ‘Q< 0.9’ lists the number of (and percentage) of residues with an average occupancy less than 0.9.

Mol	Chain	Analysed	<RSRZ>	#RSRZ>2	OWAB(Å ²)	Q<0.9
1	A	353/588 (60%)	0.16	17 (4%) 34 43	21, 32, 70, 110	0
1	B	355/588 (60%)	0.17	25 (7%) 19 27	23, 33, 65, 113	0
1	C	354/588 (60%)	0.14	18 (5%) 32 41	23, 33, 60, 108	0
1	D	357/588 (60%)	0.25	26 (7%) 18 25	22, 35, 70, 120	0
All	All	1419/2352 (60%)	0.18	86 (6%) 25 33	21, 33, 68, 120	0

All (86) RSRZ outliers are listed below:

Mol	Chain	Res	Type	RSRZ
1	D	68	HIS	9.5
1	A	56	LEU	6.7
1	D	69	GLY	6.3
1	A	68	HIS	6.1
1	B	68	HIS	5.7
1	A	67	SER	5.6
1	A	55	GLY	5.6
1	C	56	LEU	5.5
1	D	224	TRP	5.3
1	B	362	THR	4.9
1	A	53	ALA	4.9
1	C	68	HIS	4.7
1	A	58	ASP	4.7
1	C	55	GLY	4.2
1	A	52	GLN	4.1
1	D	225	LYS	4.1
1	C	58	ASP	4.1
1	A	66	ALA	4.0
1	D	58	ASP	4.0
1	C	27	GLY	3.9
1	B	52	GLN	3.8

Continued on next page...

Continued from previous page...

Mol	Chain	Res	Type	RSRZ
1	D	55	GLY	3.8
1	D	56	LEU	3.8
1	C	67	SER	3.8
1	A	57	PRO	3.7
1	C	51	ALA	3.7
1	C	59	HIS	3.6
1	A	59	HIS	3.5
1	B	55	GLY	3.4
1	B	69	GLY	3.4
1	D	67	SER	3.2
1	D	52	GLN	3.2
1	C	53	ALA	3.2
1	D	53	ALA	3.2
1	A	49	GLU	3.1
1	A	224	TRP	3.1
1	D	57	PRO	3.1
1	B	67	SER	3.1
1	C	139	LEU	3.0
1	D	138	ILE	3.0
1	B	54	GLN	3.0
1	C	49	GLU	3.0
1	B	208	VAL	3.0
1	B	59	HIS	3.0
1	D	49	GLU	2.9
1	C	52	GLN	2.9
1	B	139	LEU	2.9
1	C	111	VAL	2.9
1	B	53	ALA	2.9
1	B	66	ALA	2.8
1	B	138	ILE	2.8
1	D	223	LYS	2.8
1	C	54	GLN	2.8
1	D	70	PRO	2.8
1	A	26	GLY	2.8
1	B	58	ASP	2.7
1	D	307	GLY	2.7
1	D	340	GLU	2.7
1	D	222	VAL	2.7
1	C	138	ILE	2.7
1	B	56	LEU	2.7
1	C	66	ALA	2.6
1	D	208	VAL	2.6

Continued on next page...

Continued from previous page...

Mol	Chain	Res	Type	RSRZ
1	D	364	ASP	2.6
1	D	59	HIS	2.6
1	D	111	VAL	2.6
1	A	138	ILE	2.5
1	D	51	ALA	2.5
1	A	223	LYS	2.4
1	D	139	LEU	2.4
1	B	222	VAL	2.4
1	C	112	VAL	2.4
1	A	139	LEU	2.3
1	B	111	VAL	2.3
1	D	363	ALA	2.3
1	B	224	TRP	2.2
1	D	172	VAL	2.2
1	C	150[A]	TRP	2.2
1	B	112	VAL	2.2
1	A	137	VAL	2.1
1	B	8	GLU	2.0
1	B	360	LEU	2.0
1	B	217	ASP	2.0
1	B	51	ALA	2.0
1	B	123	ALA	2.0
1	B	327	ALA	2.0

6.2 Non-standard residues in protein, DNA, RNA chains [i](#)

There are no non-standard protein/DNA/RNA residues in this entry.

6.3 Carbohydrates [i](#)

There are no carbohydrates in this entry.

6.4 Ligands [i](#)

In the following table, the Atoms column lists the number of modelled atoms in the group and the number defined in the chemical component dictionary. LLDF column lists the quality of electron density of the group with respect to its neighbouring residues in protein, DNA or RNA chains. The B-factors column lists the minimum, median, 95th percentile and maximum values of B factors of atoms in the group. The column labelled 'Q< 0.9' lists the number of atoms with occupancy less than 0.9.

Mol	Type	Chain	Res	Atoms	RSCC	RSR	LLDF	B-factors(\AA^2)	Q<0.9
3	EDO	C	602	4/4	0.75	0.22	2.30	51,55,57,61	0
2	ASN	C	601	9/9	0.96	0.14	0.96	30,32,34,35	0
2	ASN	A	700	9/9	0.96	0.13	0.87	26,27,29,33	0
3	EDO	D	603	4/4	0.95	0.17	0.86	34,37,37,38	0
3	EDO	D	602	4/4	0.86	0.14	0.33	42,46,46,47	0
3	EDO	B	602	4/4	0.93	0.13	0.11	33,37,38,38	0
2	ASN	D	601	9/9	0.97	0.12	0.02	26,28,30,32	0
2	ASN	B	601	9/9	0.94	0.12	-0.01	30,34,36,38	0

6.5 Other polymers

There are no such residues in this entry.