



# Full wwPDB X-ray Structure Validation Report ⓘ

Feb 1, 2016 – 01:37 AM GMT

PDB ID : 2DQ0  
Title : Crystal structure of seryl-tRNA synthetase from *Pyrococcus horikoshii* complexed with a seryl-adenylate analog  
Authors : Itoh, Y.; Sekine, S.; Yokoyama, S.; RIKEN Structural Genomics/Proteomics Initiative (RSGI)  
Deposited on : 2006-05-18  
Resolution : 2.60 Å(reported)

This is a Full wwPDB X-ray Structure Validation Report for a publicly released PDB entry.  
We welcome your comments at [validation@mail.wwpdb.org](mailto:validation@mail.wwpdb.org)  
A user guide is available at  
<http://wwpdb.org/validation/2016/XrayValidationReportHelp>  
with specific help available everywhere you see the ⓘ symbol.

---

The following versions of software and data (see [references ⓘ](#)) were used in the production of this report:

MolProbity : 4.02b-467  
Mogul : 1.7 (RC4), CSD as536be (2015)  
Xtriage (Phenix) : 1.9-1692  
EDS : rb-20026688  
Percentile statistics : 20151230.v01 (using entries in the PDB archive December 30th 2015)  
Refmac : 5.8.0135  
CCP4 : 6.5.0  
Ideal geometry (proteins) : Engh & Huber (2001)  
Ideal geometry (DNA, RNA) : Parkinson et al. (1996)  
Validation Pipeline (wwPDB-VP) : trunk26865

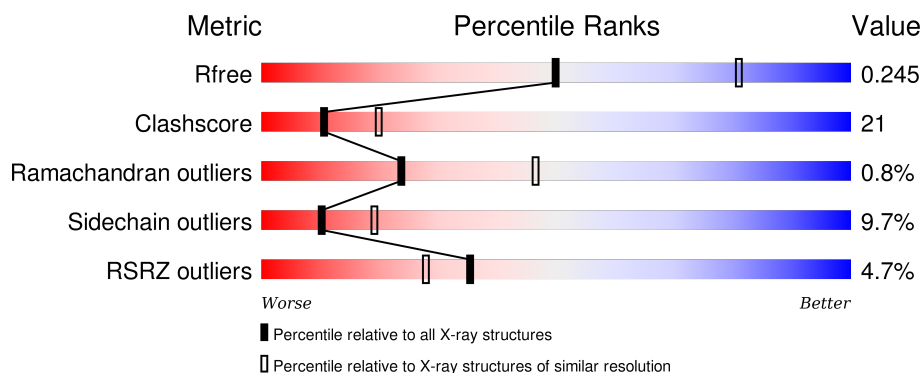
# 1 Overall quality at a glance

The following experimental techniques were used to determine the structure:

## *X-RAY DIFFRACTION*

The reported resolution of this entry is 2.60 Å.

Percentile scores (ranging between 0-100) for global validation metrics of the entry are shown in the following graphic. The table shows the number of entries on which the scores are based.



Metric	Whole archive (#Entries)	Similar resolution (#Entries, resolution range(Å))
$R_{free}$	91344	2328 (2.60-2.60)
Clashscore	102246	2679 (2.60-2.60)
Ramachandran outliers	100387	2635 (2.60-2.60)
Sidechain outliers	100360	2635 (2.60-2.60)
RSRZ outliers	91569	2334 (2.60-2.60)

The table below summarises the geometric issues observed across the polymeric chains and their fit to the electron density. The red, orange, yellow and green segments on the lower bar indicate the fraction of residues that contain outliers for  $\geq 3$ , 2, 1 and 0 types of geometric quality criteria. A grey segment represents the fraction of residues that are not modelled. The numeric value for each fraction is indicated below the corresponding segment, with a dot representing fractions  $\leq 5\%$ . The upper red bar (where present) indicates the fraction of residues that have poor fit to the electron density. The numeric value is given above the bar.

Mol	Chain	Length	Quality of chain
1	A	455	<div> <div>5%</div> <div>58% 35% 6% .</div> </div>
1	B	455	<div> <div>4%</div> <div>60% 31% 8% .</div> </div>

## 2 Entry composition [i](#)

There are 4 unique types of molecules in this entry. The entry contains 7650 atoms, of which 0 are hydrogens and 0 are deuteriums.

In the tables below, the ZeroOcc column contains the number of atoms modelled with zero occupancy, the AltConf column contains the number of residues with at least one atom in alternate conformation and the Trace column contains the number of residues modelled with at most 2 atoms.

- Molecule 1 is a protein called Seryl-tRNA synthetase.

Mol	Chain	Residues	Atoms					ZeroOcc	AltConf	Trace
1	A	447	Total	C	N	O	S	0	0	0
			3699	2376	645	670	8			
1	B	447	Total	C	N	O	S	0	0	0
			3699	2376	645	670	8			

- Molecule 2 is SULFATE ION (three-letter code: SO<sub>4</sub>) (formula: O<sub>4</sub>S).



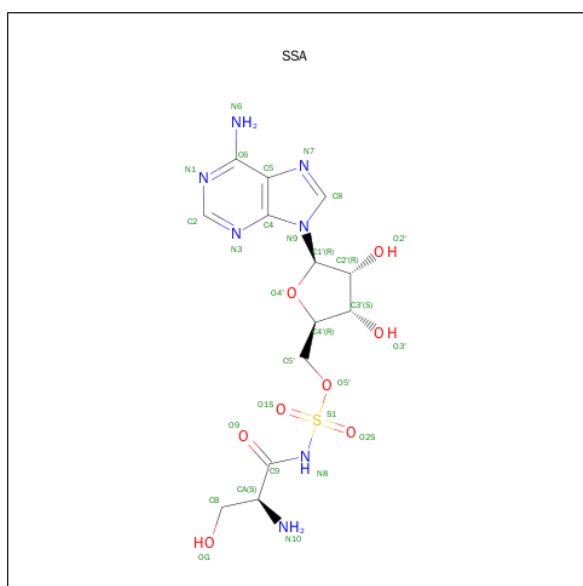
Mol	Chain	Residues	Atoms			ZeroOcc	AltConf
2	A	1	Total	O	S	0	0
			5	4	1		
2	A	1	Total	O	S	0	0
			5	4	1		
2	A	1	Total	O	S	0	0
			5	4	1		
2	A	1	Total	O	S	0	0
			5	4	1		

*Continued on next page...*

Continued from previous page...

Mol	Chain	Residues	Atoms			ZeroOcc	AltConf
2	B	1	Total	O	S	0	0
			5	4	1		
2	B	1	Total	O	S	0	0
			5	4	1		
2	B	1	Total	O	S	0	0
			5	4	1		

- Molecule 3 is 5'-O-(N-(L-SERYL)-SULFAMOYL)ADENOSINE (three-letter code: SSA) (formula: C<sub>13</sub>H<sub>19</sub>N<sub>7</sub>O<sub>8</sub>S).





## 4 Data and refinement statistics

Property	Value	Source
Space group	P 21 21 21	Depositor
Cell constants a, b, c, $\alpha$ , $\beta$ , $\gamma$	96.04Å 120.04Å 126.51Å 90.00° 90.00° 90.00°	Depositor
Resolution (Å)	48.35 – 2.60 48.35 – 2.60	Depositor EDS
% Data completeness (in resolution range)	95.1 (48.35-2.60) 95.0 (48.35-2.60)	Depositor EDS
$R_{merge}$	0.07	Depositor
$R_{sym}$	0.07	Depositor
$\langle I/\sigma(I) \rangle$ <sup>1</sup>	3.46 (at 2.61Å)	Xtriage
Refinement program	CNS 1.1	Depositor
R, $R_{free}$	0.192 , 0.248 0.191 , 0.245	Depositor DCC
$R_{free}$ test set	2180 reflections (5.02%)	DCC
Wilson B-factor (Å <sup>2</sup> )	52.9	Xtriage
Anisotropy	0.364	Xtriage
Bulk solvent $k_{sol}$ (e/Å <sup>3</sup> ), $B_{sol}$ (Å <sup>2</sup> )	0.36 , 55.8	EDS
Estimated twinning fraction	No twinning to report.	Xtriage
L-test for twinning <sup>2</sup>	$\langle  L  \rangle = 0.49$ , $\langle L^2 \rangle = 0.33$	Xtriage
Outliers	0 of 45707 reflections	Xtriage
$F_o, F_c$ correlation	0.95	EDS
Total number of atoms	7650	wwPDB-VP
Average B, all atoms (Å <sup>2</sup> )	57.0	wwPDB-VP

Xtriage's analysis on translational NCS is as follows: *The largest off-origin peak in the Patterson function is 3.56% of the height of the origin peak. No significant pseudotranslation is detected.*

<sup>1</sup>Intensities estimated from amplitudes.

<sup>2</sup>Theoretical values of  $\langle |L| \rangle$ ,  $\langle L^2 \rangle$  for acentric reflections are 0.5, 0.375 respectively for untwinned datasets, and 0.333, 0.2 for perfectly twinned datasets.

## 5 Model quality [i](#)

### 5.1 Standard geometry [i](#)

Bond lengths and bond angles in the following residue types are not validated in this section: SSA, SO4

The Z score for a bond length (or angle) is the number of standard deviations the observed value is removed from the expected value. A bond length (or angle) with  $|Z| > 5$  is considered an outlier worth inspection. RMSZ is the root-mean-square of all Z scores of the bond lengths (or angles).

Mol	Chain	Bond lengths		Bond angles	
		RMSZ	# Z  >5	RMSZ	# Z  >5
1	A	0.51	0/3783	0.73	3/5109 (0.1%)
1	B	0.54	0/3783	0.78	4/5109 (0.1%)
All	All	0.52	0/7566	0.76	7/10218 (0.1%)

There are no bond length outliers.

All (7) bond angle outliers are listed below:

Mol	Chain	Res	Type	Atoms	Z	Observed(°)	Ideal(°)
1	A	407	ALA	N-CA-C	-5.67	95.70	111.00
1	B	407	ALA	N-CA-C	-5.53	96.06	111.00
1	B	265	ILE	N-CA-C	-5.39	96.45	111.00
1	A	409	ALA	N-CA-C	-5.22	96.91	111.00
1	B	312	ARG	NE-CZ-NH2	-5.13	117.74	120.30
1	B	409	ALA	N-CA-C	-5.09	97.25	111.00
1	A	265	ILE	N-CA-C	-5.07	97.30	111.00

There are no chirality outliers.

There are no planarity outliers.

### 5.2 Too-close contacts [i](#)

In the following table, the Non-H and H(model) columns list the number of non-hydrogen atoms and hydrogen atoms in the chain respectively. The H(added) column lists the number of hydrogen atoms added and optimized by MolProbity. The Clashes column lists the number of clashes within the asymmetric unit, whereas Symm-Clashes lists symmetry related clashes.

Mol	Chain	Non-H	H(model)	H(added)	Clashes	Symm-Clashes
1	A	3699	0	3737	163	0
1	B	3699	0	3737	165	0

*Continued on next page...*

*Continued from previous page...*

Mol	Chain	Non-H	H(model)	H(added)	Clashes	Symm-Clashes
2	A	20	0	0	0	0
2	B	15	0	0	0	0
3	A	29	0	19	2	0
3	B	29	0	19	2	0
4	A	76	0	0	2	0
4	B	83	0	0	5	0
All	All	7650	0	7512	320	0

The all-atom clashscore is defined as the number of clashes found per 1000 atoms (including hydrogen atoms). The all-atom clashscore for this structure is 21.

All (320) close contacts within the same asymmetric unit are listed below, sorted by their clash magnitude.

Atom-1	Atom-2	Interatomic distance (Å)	Clash overlap (Å)
1:A:378:THR:HG22	1:A:379:ASP:H	0.95	1.08
1:B:378:THR:CG2	1:B:379:ASP:H	1.68	1.07
1:B:61:ILE:HD12	1:B:74:LEU:HD22	1.37	1.06
1:B:358:ILE:HB	1:B:372:VAL:HG13	1.36	1.04
1:A:378:THR:HG22	1:A:379:ASP:N	1.77	0.97
1:B:321:GLU:HG3	1:B:325:ARG:HH21	1.28	0.95
1:A:378:THR:CG2	1:A:379:ASP:H	1.80	0.95
1:A:358:ILE:HB	1:A:372:VAL:HG13	1.49	0.93
1:A:67:LYS:HG2	1:A:68:GLY:H	1.33	0.89
1:A:8:ARG:HD3	1:A:37:ASP:OD2	1.73	0.88
1:B:378:THR:HG23	1:B:379:ASP:H	1.35	0.87
1:B:242:VAL:HG11	1:B:247:LEU:HB2	1.55	0.86
1:B:64:ARG:HB3	1:B:69:GLU:HA	1.57	0.85
1:A:294:LYS:HD2	1:A:294:LYS:H	1.41	0.85
1:B:378:THR:CG2	1:B:379:ASP:N	2.39	0.84
1:A:430:ILE:CD1	1:A:434:LEU:HB2	2.08	0.83
1:A:343:ILE:HD12	1:A:355:LYS:HG2	1.60	0.82
1:A:64:ARG:HB3	1:A:69:GLU:HA	1.60	0.82
1:B:110:THR:HB	1:B:114:VAL:HG21	1.60	0.81
1:B:242:VAL:CG1	1:B:247:LEU:HB2	2.10	0.80
1:B:87:GLU:O	1:B:91:GLU:HG3	1.81	0.80
1:A:430:ILE:HD11	1:A:434:LEU:HB2	1.64	0.80
1:B:43:LYS:O	1:B:47:ILE:HG12	1.82	0.79
1:B:7:ILE:HG12	1:B:33:ILE:HD11	1.66	0.78
1:A:52:HIS:NE2	1:A:56:LYS:HE3	1.99	0.78
1:A:238:VAL:HG22	1:A:239:ILE:HG13	1.65	0.78
1:B:378:THR:HG22	1:B:379:ASP:H	1.46	0.77

*Continued on next page...*



*Continued from previous page...*

Atom-1	Atom-2	Interatomic distance (Å)	Clash overlap (Å)
1:B:425:ASP:OD2	1:B:427:THR:HG23	1.85	0.77
1:B:365:GLN:HE22	1:B:369:ARG:HH21	1.34	0.76
1:A:225:VAL:HG11	1:B:180:VAL:HG22	1.68	0.76
1:B:47:ILE:HD11	1:B:88:LEU:HB3	1.68	0.75
1:A:2:LEU:HD23	1:A:106:LEU:HB2	1.67	0.74
1:A:222:ARG:HG3	1:A:246:ASP:OD1	1.87	0.74
1:A:372:VAL:HB	1:A:406:THR:HB	1.68	0.74
1:B:127:ARG:HB3	1:B:340:VAL:HG13	1.69	0.73
1:A:168:ILE:HD12	1:A:445:PRO:HB3	1.70	0.73
1:B:226:GLU:OE1	1:B:255:HIS:HD2	1.72	0.73
1:B:29:TRP:O	1:B:33:ILE:HG23	1.87	0.73
1:B:228:GLY:HA3	1:B:385:LEU:HD21	1.71	0.73
1:B:288:THR:HG21	1:B:291:LYS:HD2	1.71	0.72
1:A:131:LYS:HE2	1:A:153:GLU:HB2	1.68	0.72
1:A:210:LYS:HZ2	1:A:326:ASN:ND2	1.87	0.72
1:B:1:MET:H1	1:B:384:ARG:HH21	1.35	0.72
1:A:210:LYS:NZ	1:A:326:ASN:ND2	2.38	0.72
1:A:184:ARG:HH22	1:A:288:THR:HG23	1.53	0.71
1:A:40:TRP:HE1	1:A:96:LYS:HE3	1.54	0.71
1:B:61:ILE:CD1	1:B:74:LEU:HD22	2.18	0.70
1:B:191:GLU:HG3	1:B:443:ILE:HG23	1.74	0.70
1:B:430:ILE:HD11	1:B:435:TRP:HD1	1.56	0.70
1:B:125:PRO:HG2	1:B:147:GLN:HE21	1.57	0.69
1:B:40:TRP:HE1	1:B:96:LYS:HE3	1.58	0.68
1:B:378:THR:HG22	1:B:379:ASP:N	2.06	0.68
1:B:40:TRP:HE1	1:B:96:LYS:CE	2.06	0.68
1:A:191:GLU:HG3	1:A:443:ILE:HG23	1.75	0.68
1:A:111:HIS:O	1:A:114:VAL:HG13	1.94	0.68
1:B:242:VAL:HG12	1:B:247:LEU:O	1.94	0.67
1:B:53:GLU:O	1:B:57:ILE:HG12	1.96	0.66
1:A:343:ILE:HD11	1:A:357:ASP:CG	2.16	0.66
1:B:76:ALA:O	1:B:80:GLU:HG2	1.96	0.66
1:A:29:TRP:O	1:A:33:ILE:HG23	1.96	0.66
1:B:206:ARG:NH2	1:B:333:GLU:OE2	2.28	0.66
1:B:205:ASP:O	1:B:209:GLU:HG3	1.97	0.65
1:A:220:MET:HG2	1:A:249:LEU:HD23	1.78	0.65
1:A:123:ASN:HB3	1:A:341:VAL:HG11	1.78	0.65
1:B:321:GLU:CG	1:B:325:ARG:HH21	2.06	0.64
1:A:396:LYS:NZ	1:A:396:LYS:HA	2.12	0.64
1:B:318:GLU:O	1:B:322:LYS:HG3	1.96	0.64
1:A:4:ILE:O	1:A:7:ILE:HG13	1.98	0.64

*Continued on next page...*

*Continued from previous page...*

Atom-1	Atom-2	Interatomic distance (Å)	Clash overlap (Å)
1:A:37:ASP:O	1:A:41:ARG:HG2	1.98	0.64
1:A:228:GLY:HA3	1:A:385:LEU:HD21	1.78	0.64
1:A:190:ASN:HA	1:B:214:PRO:HG2	1.78	0.64
1:A:2:LEU:HD23	1:A:106:LEU:CB	2.28	0.63
1:B:1:MET:N	1:B:384:ARG:HH21	1.97	0.63
1:A:4:ILE:O	1:A:4:ILE:HD13	1.99	0.63
1:B:321:GLU:HG3	1:B:325:ARG:NH2	2.10	0.62
1:B:430:ILE:HD12	1:B:431:PRO:O	1.99	0.62
1:A:333:GLU:HB3	1:A:433:VAL:HG21	1.81	0.62
1:B:371:VAL:CG1	1:B:372:VAL:HG12	2.28	0.62
1:A:371:VAL:HG13	1:A:372:VAL:HG12	1.81	0.62
1:A:64:ARG:HH11	1:A:70:PRO:HD2	1.62	0.62
1:B:230:THR:HG21	1:B:234:ASP:OD2	1.99	0.62
1:B:273:LEU:HB2	1:B:310:TYR:HB2	1.81	0.62
1:A:162:HIS:CD2	1:A:415:VAL:HG12	2.35	0.62
1:A:26:LYS:HE2	1:A:29:TRP:CH2	2.35	0.62
1:A:226:GLU:OE1	1:A:255:HIS:HD2	1.83	0.61
1:B:69:GLU:N	1:B:70:PRO:HD3	2.16	0.61
1:A:446:VAL:O	1:A:447:GLU:HG3	2.01	0.61
1:B:164:ASP:O	1:B:168:ILE:HG23	2.01	0.60
1:A:423:GLU:OE2	1:A:429:ARG:HD2	2.01	0.60
1:B:226:GLU:OE1	1:B:255:HIS:CD2	2.54	0.60
1:B:8:ARG:HD3	1:B:37:ASP:OD2	2.01	0.60
1:A:40:TRP:CD1	1:A:92:VAL:HG13	2.37	0.59
1:A:18:LEU:HD23	1:A:27:VAL:HA	1.84	0.59
1:A:123:ASN:HB3	1:A:341:VAL:CG1	2.32	0.59
1:B:378:THR:HG23	1:B:379:ASP:N	2.11	0.59
1:A:67:LYS:HG2	1:A:68:GLY:N	2.11	0.59
1:A:294:LYS:H	1:A:294:LYS:CD	2.07	0.59
1:B:92:VAL:CG1	1:B:96:LYS:HE3	2.32	0.59
1:B:378:THR:O	1:B:401:HIS:HA	2.02	0.59
1:B:312:ARG:HH22	1:B:391:ASP:CG	2.06	0.59
1:B:294:LYS:HE3	4:B:2089:HOH:O	2.02	0.58
1:B:11:PRO:O	1:B:15:LYS:HG2	2.02	0.58
1:B:238:VAL:HG22	1:B:239:ILE:HG13	1.85	0.58
1:B:67:LYS:HG2	1:B:68:GLY:H	1.69	0.58
1:A:49:ARG:HG3	1:A:49:ARG:HH11	1.68	0.58
1:A:225:VAL:HG11	1:B:180:VAL:CG2	2.32	0.58
1:A:288:THR:HG21	1:A:298:ARG:HD3	1.87	0.57
1:A:184:ARG:HH22	1:A:288:THR:CG2	2.16	0.57
1:B:186:TYR:CD2	1:B:188:LEU:HD13	2.40	0.57

*Continued on next page...*

*Continued from previous page...*

Atom-1	Atom-2	Interatomic distance (Å)	Clash overlap (Å)
1:B:358:ILE:HB	1:B:372:VAL:CG1	2.23	0.57
1:B:376:ASN:ND2	1:B:378:THR:H	2.03	0.57
1:A:169:LEU:HG	1:A:443:ILE:HG22	1.86	0.56
1:B:390:ARG:HD3	1:B:393:THR:HA	1.86	0.56
1:B:4:ILE:HD12	1:B:99:ILE:HD12	1.87	0.56
1:B:95:LEU:O	1:B:99:ILE:HG23	2.06	0.56
1:A:260:MET:O	1:B:176:ARG:HD3	2.04	0.56
1:B:127:ARG:NH2	1:B:328:GLU:OE2	2.37	0.56
1:A:176:ARG:HD3	1:B:260:MET:O	2.05	0.56
1:B:79:ARG:HH12	1:B:83:LYS:HD3	1.70	0.56
1:B:358:ILE:HD12	1:B:372:VAL:HG11	1.88	0.55
1:A:65:ARG:HA	1:A:69:GLU:CD	2.26	0.55
1:A:39:GLU:HG2	1:A:95:LEU:HD21	1.88	0.55
1:A:376:ASN:HA	1:A:403:LEU:HG	1.87	0.55
1:B:288:THR:CG2	1:B:291:LYS:HD2	2.36	0.55
1:A:127:ARG:HH11	1:A:127:ARG:HB2	1.72	0.55
1:A:65:ARG:HA	1:A:69:GLU:OE2	2.07	0.55
1:B:69:GLU:C	1:B:71:VAL:H	2.09	0.55
1:B:65:ARG:HD3	1:B:65:ARG:O	2.06	0.55
1:A:249:LEU:HD21	1:B:249:LEU:HD11	1.88	0.55
1:A:54:ARG:HG2	1:A:54:ARG:HH11	1.73	0.54
1:B:321:GLU:OE2	1:B:325:ARG:NH2	2.40	0.54
1:A:161:LEU:HD13	1:A:294:LYS:NZ	2.23	0.54
1:B:371:VAL:HG12	1:B:372:VAL:HG12	1.90	0.54
1:B:242:VAL:HG13	1:B:245:GLU:HB2	1.88	0.54
1:B:40:TRP:HE1	1:B:96:LYS:CG	2.21	0.54
1:B:239:ILE:O	1:B:284:LYS:HE3	2.08	0.54
1:B:40:TRP:NE1	1:B:96:LYS:CG	2.71	0.54
1:B:392:ARG:HH11	1:B:392:ARG:HG2	1.73	0.54
1:B:368:PHE:O	1:B:369:ARG:HD2	2.08	0.53
1:A:412:ARG:O	1:A:415:VAL:HG22	2.08	0.53
1:A:108:ASN:HD22	1:A:109:ILE:H	1.55	0.53
1:A:7:ILE:HD12	1:A:7:ILE:C	2.29	0.53
1:A:191:GLU:HG3	1:A:443:ILE:CG2	2.39	0.53
1:B:54:ARG:HB2	1:B:81:ILE:HG21	1.90	0.53
1:B:371:VAL:HG13	1:B:372:VAL:HG12	1.90	0.53
1:A:5:LYS:HD2	1:A:8:ARG:HH11	1.74	0.52
1:A:157:TRP:CE2	1:A:424:GLU:HG2	2.44	0.52
1:A:69:GLU:N	1:A:70:PRO:HD3	2.23	0.52
1:B:427:THR:HG22	1:B:445:PRO:HD3	1.92	0.52
1:B:114:VAL:HG23	1:B:114:VAL:O	2.09	0.52

*Continued on next page...*

*Continued from previous page...*

Atom-1	Atom-2	Interatomic distance (Å)	Clash overlap (Å)
1:B:47:ILE:CD1	1:B:88:LEU:HB3	2.36	0.52
1:A:71:VAL:O	1:A:73:GLU:N	2.43	0.52
1:B:64:ARG:O	1:B:69:GLU:HB2	2.10	0.52
1:B:351:VAL:HB	1:B:380:TRP:CE3	2.44	0.52
1:A:64:ARG:O	1:A:69:GLU:HB2	2.10	0.52
1:A:168:ILE:CD1	1:A:445:PRO:HB3	2.40	0.52
1:A:412:ARG:HD2	3:A:1001:SSA:H2'	1.91	0.52
1:A:61:ILE:HG23	1:A:71:VAL:HG11	1.92	0.51
1:B:68:GLY:C	1:B:70:PRO:HD3	2.30	0.51
1:A:215:VAL:HB	1:B:189:LEU:HD23	1.91	0.51
1:A:157:TRP:CD2	1:A:424:GLU:HG2	2.45	0.51
1:B:24:LEU:H	1:B:24:LEU:HD22	1.74	0.51
1:A:254:GLU:OE1	3:A:1001:SSA:N10	2.44	0.51
1:A:186:TYR:CD2	1:A:188:LEU:HD13	2.45	0.51
1:B:283:ARG:NH2	3:B:1002:SSA:O1S	2.43	0.51
1:A:226:GLU:OE1	1:A:255:HIS:CD2	2.63	0.51
1:B:390:ARG:HG3	1:B:392:ARG:O	2.10	0.51
1:A:52:HIS:CD2	1:A:56:LYS:HE3	2.46	0.51
1:A:15:LYS:HE2	1:A:30:VAL:HB	1.93	0.51
1:B:57:ILE:O	1:B:74:LEU:HD21	2.11	0.51
1:A:378:THR:CG2	1:A:379:ASP:N	2.50	0.50
1:B:23:GLU:HG3	1:B:26:LYS:HG2	1.93	0.50
1:B:5:LYS:NZ	4:B:2036:HOH:O	2.44	0.50
1:B:429:ARG:HG2	1:B:429:ARG:HH21	1.76	0.50
1:A:120:GLU:CD	1:A:120:GLU:H	2.15	0.50
1:A:210:LYS:NZ	1:A:326:ASN:HD22	2.07	0.50
1:A:40:TRP:HE1	1:A:96:LYS:CE	2.23	0.50
1:A:222:ARG:HG3	1:A:246:ASP:CG	2.33	0.50
1:A:169:LEU:HG	1:A:443:ILE:CG2	2.42	0.49
1:B:429:ARG:HA	1:B:442:GLU:HB2	1.94	0.49
1:A:65:ARG:O	1:A:65:ARG:HD3	2.12	0.49
1:A:177:ALA:CB	1:A:186:TYR:HA	2.42	0.49
1:B:110:THR:CB	1:B:114:VAL:HG21	2.37	0.49
1:A:127:ARG:NH1	4:A:2038:HOH:O	2.45	0.49
1:B:111:HIS:O	1:B:114:VAL:HG22	2.13	0.49
1:B:278:VAL:O	1:B:279:SER:HB3	2.12	0.49
1:B:269:LYS:HE2	1:B:269:LYS:N	2.28	0.48
1:B:7:ILE:HD12	1:B:7:ILE:C	2.34	0.48
1:B:58:ALA:O	1:B:61:ILE:HG22	2.13	0.48
1:A:222:ARG:CG	1:A:246:ASP:OD1	2.58	0.48
1:A:396:LYS:HZ2	1:A:396:LYS:HA	1.77	0.48

*Continued on next page...*

*Continued from previous page...*

Atom-1	Atom-2	Interatomic distance (Å)	Clash overlap (Å)
1:A:13:LEU:HD13	1:A:13:LEU:C	2.34	0.47
1:A:57:ILE:HD12	1:A:81:ILE:CD1	2.44	0.47
1:A:163:VAL:HG21	1:A:294:LYS:HD2	1.96	0.47
1:A:373:SER:O	1:A:405:SER:HA	2.14	0.47
1:B:359:GLU:HB3	1:B:368:PHE:HB3	1.94	0.47
1:A:227:GLU:HB2	1:A:232:PHE:CE1	2.50	0.47
1:A:64:ARG:HD3	1:A:70:PRO:HD2	1.95	0.47
1:A:165:LEU:O	1:A:169:LEU:HB2	2.14	0.47
1:B:139:LEU:O	1:B:139:LEU:HD22	2.14	0.47
1:A:412:ARG:HA	1:A:415:VAL:HG22	1.96	0.47
1:B:251:PRO:O	1:B:283:ARG:NH1	2.43	0.47
1:B:204:LEU:HD21	1:B:278:VAL:HG21	1.97	0.47
1:A:392:ARG:C	1:A:394:ASP:N	2.68	0.47
1:B:201:ARG:HA	1:B:201:ARG:HD2	1.74	0.47
1:B:43:LYS:HE2	1:B:91:GLU:CD	2.35	0.46
1:B:29:TRP:CE3	1:B:106:LEU:HD13	2.51	0.46
1:B:65:ARG:HD3	1:B:65:ARG:C	2.35	0.46
1:B:92:VAL:HG12	1:B:96:LYS:HE3	1.97	0.46
1:A:224:PHE:HA	1:A:227:GLU:HG2	1.98	0.46
1:A:392:ARG:C	1:A:394:ASP:H	2.18	0.46
1:A:213:THR:HG22	1:B:190:ASN:HD21	1.79	0.46
1:B:29:TRP:HE3	1:B:106:LEU:HD13	1.79	0.46
1:B:238:VAL:CG2	1:B:239:ILE:HG13	2.46	0.46
1:B:171:GLY:HA3	1:B:192:ILE:CG1	2.45	0.46
1:A:205:ASP:O	1:A:209:GLU:HG3	2.16	0.46
1:A:389:PHE:HD1	1:A:398:ARG:O	1.99	0.46
1:A:164:ASP:O	1:A:168:ILE:HG23	2.15	0.46
1:A:372:VAL:HG23	1:A:373:SER:N	2.32	0.46
1:A:40:TRP:HD1	1:A:92:VAL:HG13	1.79	0.46
1:B:125:PRO:HG2	1:B:147:GLN:NE2	2.27	0.46
1:B:146:SER:O	1:B:147:GLN:HB2	2.16	0.46
1:A:389:PHE:CD1	1:A:398:ARG:O	2.68	0.45
1:A:363:PRO:HG2	1:A:420:ASN:HA	1.98	0.45
1:A:41:ARG:HB3	1:A:41:ARG:CZ	2.45	0.45
1:A:415:VAL:HG23	1:A:416:ALA:N	2.31	0.45
1:A:242:VAL:HG13	1:A:247:LEU:O	2.17	0.45
1:B:61:ILE:HD12	1:B:74:LEU:CD2	2.26	0.45
1:A:219:TYR:CE2	1:A:280:PRO:HD2	2.52	0.45
1:B:191:GLU:HG3	1:B:443:ILE:CG2	2.45	0.45
1:B:40:TRP:NE1	1:B:96:LYS:HG2	2.32	0.45
1:B:39:GLU:HG2	1:B:95:LEU:HD21	1.97	0.45

*Continued on next page...*

*Continued from previous page...*

Atom-1	Atom-2	Interatomic distance (Å)	Clash overlap (Å)
1:A:394:ASP:O	1:A:395:GLU:HB3	2.17	0.45
1:B:430:ILE:CD1	1:B:434:LEU:HB2	2.47	0.45
1:B:228:GLY:HA3	1:B:385:LEU:CD2	2.42	0.45
1:B:288:THR:O	1:B:289:ALA:HB2	2.17	0.45
1:B:110:THR:HB	1:B:114:VAL:CG2	2.40	0.44
1:B:257:LEU:HA	1:B:257:LEU:HD12	1.83	0.44
1:B:61:ILE:HB	1:B:74:LEU:CD2	2.47	0.44
1:A:392:ARG:HG3	1:A:394:ASP:H	1.82	0.44
1:A:200:ILE:O	1:A:204:LEU:HB2	2.17	0.44
1:A:147:GLN:O	1:A:149:LYS:HG3	2.18	0.44
1:A:358:ILE:HD12	1:A:372:VAL:HG11	2.00	0.44
1:B:252:THR:HA	1:B:281:CYS:SG	2.57	0.44
1:A:288:THR:OG1	1:A:291:LYS:HG3	2.17	0.44
1:B:312:ARG:NH2	1:B:391:ASP:OD1	2.51	0.44
1:A:276:VAL:HA	1:A:306:GLU:O	2.17	0.44
1:A:288:THR:OG1	1:A:289:ALA:N	2.51	0.44
1:B:230:THR:HG23	4:B:2039:HOH:O	2.17	0.44
1:A:157:TRP:CD1	1:A:424:GLU:HG2	2.53	0.44
1:A:157:TRP:CG	1:A:424:GLU:HG2	2.53	0.44
1:A:11:PRO:HA	1:A:14:VAL:CG1	2.48	0.44
1:A:139:LEU:HD13	1:A:143:LEU:HD12	1.98	0.44
1:B:108:ASN:HD22	1:B:109:ILE:H	1.66	0.44
1:B:171:GLY:HA3	1:B:192:ILE:HG13	2.00	0.43
1:A:368:PHE:O	1:A:369:ARG:HD2	2.18	0.43
1:B:4:ILE:O	1:B:8:ARG:HG3	2.19	0.43
1:A:57:ILE:HD12	1:A:81:ILE:HD12	2.01	0.43
1:B:427:THR:HG22	1:B:445:PRO:CD	2.48	0.43
1:B:392:ARG:C	1:B:394:ASP:H	2.21	0.43
1:A:386:ASN:HD22	1:A:386:ASN:C	2.20	0.43
1:A:201:ARG:HA	1:A:201:ARG:HD2	1.89	0.43
1:A:150:MET:CE	1:A:337:PRO:HB2	2.49	0.43
1:B:294:LYS:CE	4:B:2089:HOH:O	2.65	0.43
1:A:269:LYS:HD2	1:A:269:LYS:HA	1.85	0.43
1:A:223:ARG:HB2	1:A:248:TYR:CE1	2.54	0.43
1:B:124:VAL:HA	1:B:125:PRO:HD2	1.95	0.43
1:A:312:ARG:HB3	1:A:314:GLU:OE2	2.19	0.43
1:A:294:LYS:N	1:A:294:LYS:HD2	2.18	0.42
1:B:177:ALA:CB	1:B:186:TYR:HA	2.48	0.42
1:A:61:ILE:HG23	1:A:71:VAL:CG1	2.49	0.42
1:B:253:ALA:O	1:B:257:LEU:HB2	2.19	0.42
1:A:281:CYS:O	1:A:301:GLN:HA	2.19	0.42

*Continued on next page...*

*Continued from previous page...*

Atom-1	Atom-2	Interatomic distance (Å)	Clash overlap (Å)
1:A:206:ARG:HH21	1:A:333:GLU:CD	2.22	0.42
1:A:210:LYS:HZ3	1:A:326:ASN:ND2	2.15	0.42
1:A:77:LYS:HA	1:A:80:GLU:HG2	2.01	0.42
1:B:40:TRP:NE1	1:B:96:LYS:HG3	2.35	0.42
1:A:129:TRP:CD2	1:A:332:GLN:HG2	2.54	0.42
1:A:145:GLN:HG3	4:A:2012:HOH:O	2.20	0.42
1:B:21:ARG:HA	1:B:345:THR:HB	2.02	0.42
1:B:220:MET:HA	1:B:248:TYR:O	2.19	0.42
1:A:378:THR:O	1:A:401:HIS:HA	2.20	0.42
1:A:4:ILE:CD1	1:A:8:ARG:HG3	2.50	0.42
1:B:79:ARG:NH1	1:B:80:GLU:OE1	2.53	0.42
1:A:316:SER:HB2	1:A:403:LEU:HD11	2.02	0.41
1:A:11:PRO:O	1:A:14:VAL:HG13	2.20	0.41
1:B:429:ARG:NH2	1:B:429:ARG:HG2	2.35	0.41
1:A:386:ASN:C	1:A:386:ASN:ND2	2.74	0.41
1:A:430:ILE:HA	1:A:431:PRO:HD3	1.90	0.41
1:B:15:LYS:HA	1:B:18:LEU:HD12	2.02	0.41
1:A:94:GLU:HG3	1:A:95:LEU:N	2.35	0.41
1:A:214:PRO:HA	1:A:276:VAL:HG13	2.02	0.41
1:B:56:LYS:O	1:B:59:VAL:HG12	2.21	0.41
1:B:3:ASP:O	1:B:6:LEU:HB3	2.20	0.41
1:B:219:TYR:CZ	1:B:280:PRO:HD2	2.56	0.41
1:A:29:TRP:HE3	1:A:106:LEU:HD21	1.85	0.41
1:B:62:GLY:O	1:B:65:ARG:HB3	2.19	0.41
1:B:210:LYS:HD3	1:B:326:ASN:ND2	2.36	0.41
1:B:63:LYS:HB3	1:B:63:LYS:HE3	1.80	0.41
1:A:6:LEU:O	1:A:6:LEU:HD22	2.21	0.41
1:B:412:ARG:HD2	3:B:1002:SSA:H2'	2.03	0.41
1:A:222:ARG:O	1:A:225:VAL:HG13	2.20	0.41
1:B:430:ILE:HD11	1:B:435:TRP:CD1	2.43	0.41
1:A:10:ASN:OD1	1:A:13:LEU:HB2	2.21	0.41
1:A:202:PHE:CE2	1:A:330:LEU:HD22	2.56	0.41
1:B:165:LEU:O	1:B:169:LEU:HD22	2.21	0.41
1:B:83:LYS:O	1:B:87:GLU:HG2	2.21	0.41
1:A:108:ASN:HD22	1:A:109:ILE:N	2.17	0.41
1:A:11:PRO:O	1:A:15:LYS:HG3	2.21	0.41
1:B:365:GLN:HB3	1:B:365:GLN:HE21	1.65	0.40
1:B:206:ARG:HH21	1:B:333:GLU:CD	2.24	0.40
1:B:392:ARG:C	1:B:394:ASP:N	2.74	0.40
1:B:46:GLU:HB3	1:B:88:LEU:HD13	2.03	0.40
1:B:79:ARG:NE	4:B:2026:HOH:O	2.54	0.40

*Continued on next page...*

*Continued from previous page...*

Atom-1	Atom-2	Interatomic distance (Å)	Clash overlap (Å)
1:B:168:ILE:O	1:B:446:VAL:HG22	2.21	0.40
1:A:221:VAL:HG21	1:A:225:VAL:HG22	2.03	0.40
1:A:284:LYS:O	1:A:300:HIS:HE1	2.04	0.40
1:A:161:LEU:HA	1:A:161:LEU:HD23	1.95	0.40
1:B:1:MET:H1	1:B:384:ARG:HD2	1.86	0.40
1:B:42:THR:O	1:B:45:LYS:HB3	2.21	0.40

There are no symmetry-related clashes.

## 5.3 Torsion angles [i](#)

### 5.3.1 Protein backbone [i](#)

In the following table, the Percentiles column shows the percent Ramachandran outliers of the chain as a percentile score with respect to all X-ray entries followed by that with respect to entries of similar resolution.

The Analysed column shows the number of residues for which the backbone conformation was analysed, and the total number of residues.

Mol	Chain	Analysed	Favoured	Allowed	Outliers	Percentiles	
1	A	445/455 (98%)	416 (94%)	24 (5%)	5 (1%)	17	36
1	B	445/455 (98%)	423 (95%)	20 (4%)	2 (0%)	39	65
All	All	890/910 (98%)	839 (94%)	44 (5%)	7 (1%)	24	46

All (7) Ramachandran outliers are listed below:

Mol	Chain	Res	Type
1	A	71	VAL
1	A	72	ASP
1	B	289	ALA
1	A	289	ALA
1	A	394	ASP
1	B	71	VAL
1	A	292	ASP



### 5.3.2 Protein sidechains ⓘ

In the following table, the Percentiles column shows the percent sidechain outliers of the chain as a percentile score with respect to all X-ray entries followed by that with respect to entries of similar resolution.

The Analysed column shows the number of residues for which the sidechain conformation was analysed, and the total number of residues.

Mol	Chain	Analysed	Rotameric	Outliers	Percentiles	
1	A	398/405 (98%)	364 (92%)	34 (8%)	13	25
1	B	398/405 (98%)	355 (89%)	43 (11%)	8	15
All	All	796/810 (98%)	719 (90%)	77 (10%)	10	19

All (77) residues with a non-rotameric sidechain are listed below:

Mol	Chain	Res	Type
1	A	4	ILE
1	A	10	ASN
1	A	14	VAL
1	A	18	LEU
1	A	35	LYS
1	A	41	ARG
1	A	46	GLU
1	A	49	ARG
1	A	53	GLU
1	A	82	VAL
1	A	95	LEU
1	A	108	ASN
1	A	114	VAL
1	A	119	ASP
1	A	167	GLU
1	A	168	ILE
1	A	169	LEU
1	A	206	ARG
1	A	213	THR
1	A	215	VAL
1	A	217	PRO
1	A	252	THR
1	A	257	LEU
1	A	283	ARG
1	A	288	THR
1	A	292	ASP
1	A	294	LYS

*Continued on next page...*

*Continued from previous page...*

Mol	Chain	Res	Type
1	A	334	LEU
1	A	371	VAL
1	A	372	VAL
1	A	373	SER
1	A	386	ASN
1	A	396	LYS
1	A	430	ILE
1	B	2	LEU
1	B	14	VAL
1	B	33	ILE
1	B	35	LYS
1	B	46	GLU
1	B	75	LEU
1	B	77	LYS
1	B	79	ARG
1	B	94	GLU
1	B	95	LEU
1	B	99	ILE
1	B	106	LEU
1	B	108	ASN
1	B	139	LEU
1	B	151	GLU
1	B	168	ILE
1	B	169	LEU
1	B	180	VAL
1	B	188	LEU
1	B	204	LEU
1	B	206	ARG
1	B	215	VAL
1	B	217	PRO
1	B	230	THR
1	B	238	VAL
1	B	252	THR
1	B	257	LEU
1	B	269	LYS
1	B	271	LEU
1	B	283	ARG
1	B	321	GLU
1	B	334	LEU
1	B	340	VAL
1	B	351	VAL
1	B	371	VAL

*Continued on next page...*

*Continued from previous page...*

Mol	Chain	Res	Type
1	B	372	VAL
1	B	376	ASN
1	B	378	THR
1	B	390	ARG
1	B	394	ASP
1	B	427	THR
1	B	430	ILE
1	B	442	GLU

Some sidechains can be flipped to improve hydrogen bonding and reduce clashes. All (20) such sidechains are listed below:

Mol	Chain	Res	Type
1	A	10	ASN
1	A	108	ASN
1	A	190	ASN
1	A	255	HIS
1	A	263	ASN
1	A	307	GLN
1	A	326	ASN
1	A	332	GLN
1	A	386	ASN
1	B	108	ASN
1	B	147	GLN
1	B	190	ASN
1	B	255	HIS
1	B	263	ASN
1	B	307	GLN
1	B	326	ASN
1	B	332	GLN
1	B	365	GLN
1	B	376	ASN
1	B	386	ASN

### 5.3.3 RNA ⓘ

There are no RNA molecules in this entry.

## 5.4 Non-standard residues in protein, DNA, RNA chains ⓘ

There are no non-standard protein/DNA/RNA residues in this entry.

## 5.5 Carbohydrates

There are no carbohydrates in this entry.

## 5.6 Ligand geometry

9 ligands are modelled in this entry.

In the following table, the Counts columns list the number of bonds (or angles) for which Mogul statistics could be retrieved, the number of bonds (or angles) that are observed in the model and the number of bonds (or angles) that are defined in the chemical component dictionary. The Link column lists molecule types, if any, to which the group is linked. The Z score for a bond length (or angle) is the number of standard deviations the observed value is removed from the expected value. A bond length (or angle) with  $|Z| > 2$  is considered an outlier worth inspection. RMSZ is the root-mean-square of all Z scores of the bond lengths (or angles).

Mol	Type	Chain	Res	Link	Bond lengths			Bond angles		
					Counts	RMSZ	# $ Z  > 2$	Counts	RMSZ	# $ Z  > 2$
3	SSA	A	1001	-	24,31,31	1.53	3 (12%)	29,46,46	1.16	3 (10%)
2	SO4	A	2001	-	4,4,4	0.20	0	6,6,6	0.11	0
2	SO4	A	2003	-	4,4,4	0.24	0	6,6,6	0.16	0
2	SO4	A	2005	-	4,4,4	0.35	0	6,6,6	0.12	0
2	SO4	A	2007	-	4,4,4	0.30	0	6,6,6	0.07	0
3	SSA	B	1002	-	24,31,31	1.40	2 (8%)	29,46,46	1.20	2 (6%)
2	SO4	B	2002	-	4,4,4	0.25	0	6,6,6	0.16	0
2	SO4	B	2004	-	4,4,4	0.18	0	6,6,6	0.11	0
2	SO4	B	2006	-	4,4,4	0.34	0	6,6,6	0.23	0

In the following table, the Chirals column lists the number of chiral outliers, the number of chiral centers analysed, the number of these observed in the model and the number defined in the chemical component dictionary. Similar counts are reported in the Torsion and Rings columns. '-' means no outliers of that kind were identified.

Mol	Type	Chain	Res	Link	Chirals	Torsions	Rings
3	SSA	A	1001	-	-	0/15/37/37	0/3/3/3
2	SO4	A	2001	-	-	0/0/0/0	0/0/0/0
2	SO4	A	2003	-	-	0/0/0/0	0/0/0/0
2	SO4	A	2005	-	-	0/0/0/0	0/0/0/0
2	SO4	A	2007	-	-	0/0/0/0	0/0/0/0
3	SSA	B	1002	-	-	0/15/37/37	0/3/3/3
2	SO4	B	2002	-	-	0/0/0/0	0/0/0/0
2	SO4	B	2004	-	-	0/0/0/0	0/0/0/0
2	SO4	B	2006	-	-	0/0/0/0	0/0/0/0

All (5) bond length outliers are listed below:

Mol	Chain	Res	Type	Atoms	Z	Observed(Å)	Ideal(Å)
3	A	1001	SSA	C9-N8	-2.16	1.34	1.37
3	B	1002	SSA	O2S-S1	4.08	1.45	1.42
3	A	1001	SSA	O1S-S1	4.25	1.46	1.42
3	B	1002	SSA	O1S-S1	4.26	1.46	1.42
3	A	1001	SSA	O2S-S1	4.51	1.46	1.42

All (5) bond angle outliers are listed below:

Mol	Chain	Res	Type	Atoms	Z	Observed(°)	Ideal(°)
3	B	1002	SSA	O2S-S1-N8	-3.42	103.93	108.50
3	A	1001	SSA	C9-N8-S1	-2.70	120.27	124.05
3	A	1001	SSA	O1S-S1-N8	-2.29	105.44	108.50
3	A	1001	SSA	O5'-C5'-C4'	2.05	111.84	107.90
3	B	1002	SSA	O5'-C5'-C4'	2.38	112.47	107.90

There are no chirality outliers.

There are no torsion outliers.

There are no ring outliers.

2 monomers are involved in 4 short contacts:

Mol	Chain	Res	Type	Clashes	Symm-Clashes
3	A	1001	SSA	2	0
3	B	1002	SSA	2	0

## 5.7 Other polymers [i](#)

There are no such residues in this entry.

## 5.8 Polymer linkage issues [i](#)

There are no chain breaks in this entry.

## 6 Fit of model and data ⓘ

### 6.1 Protein, DNA and RNA chains ⓘ

In the following table, the column labelled ‘#RSRZ> 2’ contains the number (and percentage) of RSRZ outliers, followed by percent RSRZ outliers for the chain as percentile scores relative to all X-ray entries and entries of similar resolution. The OWAB column contains the minimum, median, 95<sup>th</sup> percentile and maximum values of the occupancy-weighted average B-factor per residue. The column labelled ‘Q< 0.9’ lists the number of (and percentage) of residues with an average occupancy less than 0.9.

Mol	Chain	Analysed	<RSRZ>	#RSRZ>2	OWAB(Å <sup>2</sup> )	Q<0.9
1	A	447/455 (98%)	0.11	22 (4%) 33 26	32, 54, 99, 156	0
1	B	447/455 (98%)	-0.01	20 (4%) 37 29	30, 50, 108, 156	0
All	All	894/910 (98%)	0.05	42 (4%) 35 28	30, 52, 106, 156	0

All (42) RSRZ outliers are listed below:

Mol	Chain	Res	Type	RSRZ
1	B	60	GLU	6.3
1	B	61	ILE	5.9
1	A	69	GLU	5.6
1	B	65	ARG	5.1
1	B	70	PRO	5.1
1	A	63	LYS	4.9
1	B	68	GLY	4.9
1	B	63	LYS	4.6
1	B	67	LYS	4.6
1	B	69	GLU	4.4
1	A	65	ARG	4.2
1	A	292	ASP	4.0
1	B	66	LYS	3.9
1	B	447	GLU	3.7
1	A	66	LYS	3.6
1	A	392	ARG	3.5
1	B	75	LEU	3.4
1	A	395	GLU	3.3
1	A	393	THR	3.3
1	B	59	VAL	3.1
1	A	70	PRO	3.0
1	A	394	ASP	2.9
1	B	56	LYS	2.9
1	B	74	LEU	2.9

*Continued on next page...*

*Continued from previous page...*

Mol	Chain	Res	Type	RSRZ
1	B	58	ALA	2.9
1	A	68	GLY	2.6
1	B	57	ILE	2.5
1	B	71	VAL	2.5
1	B	64	ARG	2.5
1	B	77	LYS	2.5
1	A	59	VAL	2.4
1	A	390	ARG	2.3
1	A	71	VAL	2.3
1	B	62	GLY	2.3
1	A	62	GLY	2.3
1	A	391	ASP	2.3
1	A	67	LYS	2.2
1	A	61	ILE	2.1
1	A	312	ARG	2.1
1	A	33	ILE	2.1
1	A	40	TRP	2.1
1	A	57	ILE	2.0

## 6.2 Non-standard residues in protein, DNA, RNA chains [i](#)

There are no non-standard protein/DNA/RNA residues in this entry.

## 6.3 Carbohydrates [i](#)

There are no carbohydrates in this entry.

## 6.4 Ligands [i](#)

In the following table, the Atoms column lists the number of modelled atoms in the group and the number defined in the chemical component dictionary. LLDF column lists the quality of electron density of the group with respect to its neighbouring residues in protein, DNA or RNA chains. The B-factors column lists the minimum, median, 95<sup>th</sup> percentile and maximum values of B factors of atoms in the group. The column labelled 'Q< 0.9' lists the number of atoms with occupancy less than 0.9.

Mol	Type	Chain	Res	Atoms	RSCC	RSR	LLDF	B-factors(Å <sup>2</sup> )	Q<0.9
2	SO4	A	2007	5/5	0.98	0.16	0.50	66,77,80,83	0
3	SSA	A	1001	29/29	0.99	0.20	0.01	26,40,47,52	0
3	SSA	B	1002	29/29	0.99	0.16	-0.31	30,37,45,47	0

*Continued on next page...*

*Continued from previous page...*

Mol	Type	Chain	Res	Atoms	RSCC	RSR	LLDF	B-factors( $\text{\AA}^2$ )	Q<0.9
2	SO4	A	2001	5/5	0.99	0.15	-0.64	65,71,78,82	0
2	SO4	B	2002	5/5	0.97	0.13	-0.73	74,74,79,86	0
2	SO4	A	2003	5/5	0.95	0.16	-0.94	105,107,107,108	0
2	SO4	B	2004	5/5	0.96	0.14	-1.07	95,98,100,102	0
2	SO4	B	2006	5/5	0.84	0.19	-	117,121,124,129	0
2	SO4	A	2005	5/5	0.93	0.19	-	103,107,110,112	0

## 6.5 Other polymers [i](#)

There are no such residues in this entry.