



Full wwPDB X-ray Structure Validation Report ⓘ

Feb 1, 2016 – 03:54 PM GMT

PDB ID : 4DUB
Title : cytochrome P450 BM3h-9D7 MRI sensor bound to dopamine
Authors : Brustad, E.M.; Lelyveld, V.S.; Snow, C.D.; Crook, N.; Martinez, F.M.; Scholl, T.J.; Jasanoff, A.; Arnold, F.H.
Deposited on : 2012-02-21
Resolution : 1.70 Å(reported)

This is a Full wwPDB X-ray Structure Validation Report for a publicly released PDB entry.
We welcome your comments at validation@mail.wwpdb.org
A user guide is available at
<http://wwpdb.org/validation/2016/XrayValidationReportHelp>
with specific help available everywhere you see the ⓘ symbol.

The following versions of software and data (see [references ⓘ](#)) were used in the production of this report:

MolProbity : 4.02b-467
Mogul : 1.7 (RC4), CSD as536be (2015)
Xtriage (Phenix) : 1.9-1692
EDS : rb-20026688
Percentile statistics : 20151230.v01 (using entries in the PDB archive December 30th 2015)
Refmac : 5.8.0135
CCP4 : 6.5.0
Ideal geometry (proteins) : Engh & Huber (2001)
Ideal geometry (DNA, RNA) : Parkinson et al. (1996)
Validation Pipeline (wwPDB-VP) : trunk26865

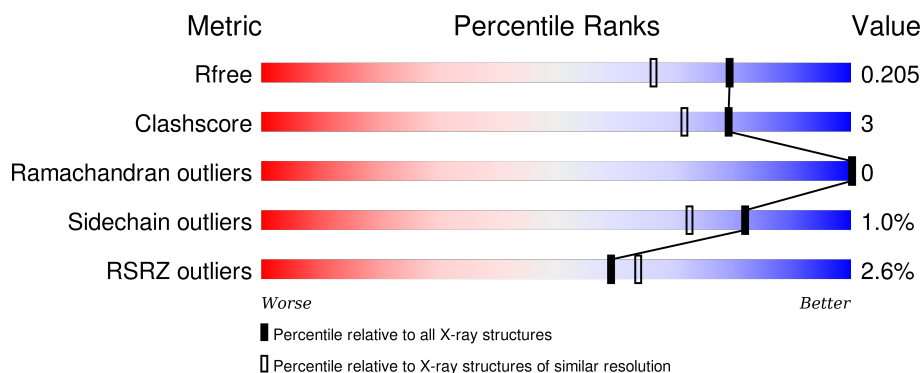
1 Overall quality at a glance

The following experimental techniques were used to determine the structure:

X-RAY DIFFRACTION

The reported resolution of this entry is 1.70 Å.

Percentile scores (ranging between 0-100) for global validation metrics of the entry are shown in the following graphic. The table shows the number of entries on which the scores are based.



Metric	Whole archive (#Entries)	Similar resolution (#Entries, resolution range(Å))
R_{free}	91344	3190 (1.70-1.70)
Clashscore	102246	3585 (1.70-1.70)
Ramachandran outliers	100387	3527 (1.70-1.70)
Sidechain outliers	100360	3527 (1.70-1.70)
RSRZ outliers	91569	3200 (1.70-1.70)

The table below summarises the geometric issues observed across the polymeric chains and their fit to the electron density. The red, orange, yellow and green segments on the lower bar indicate the fraction of residues that contain outliers for ≥ 3 , 2, 1 and 0 types of geometric quality criteria. A grey segment represents the fraction of residues that are not modelled. The numeric value for each fraction is indicated below the corresponding segment, with a dot representing fractions $\leq 5\%$. The upper red bar (where present) indicates the fraction of residues that have poor fit to the electron density. The numeric value is given above the bar.

Mol	Chain	Length	Quality of chain
1	A	472	<div> <div>3%</div> <div>89%</div> <div>7%</div> <div>.</div> </div>
1	B	472	<div> <div>2%</div> <div>86%</div> <div>11%</div> <div>.</div> </div>

The following table lists non-polymeric compounds, carbohydrate monomers and non-standard residues in protein, DNA, RNA chains that are outliers for geometric or electron-density-fit criteria:

Mol	Type	Chain	Res	Chirality	Geometry	Clashes	Electron density
3	LDP	B	501	-	-	-	X

2 Entry composition [i](#)

There are 4 unique types of molecules in this entry. The entry contains 8167 atoms, of which 0 are hydrogens and 0 are deuteriums.

In the tables below, the ZeroOcc column contains the number of atoms modelled with zero occupancy, the AltConf column contains the number of residues with at least one atom in alternate conformation and the Trace column contains the number of residues modelled with at most 2 atoms.

- Molecule 1 is a protein called cytochrome P450 BM3 variant 9D7.

Mol	Chain	Residues	Atoms					ZeroOcc	AltConf	Trace
1	A	456	Total	C	N	O	S	0	2	0
			3664	2342	620	684	18			
1	B	456	Total	C	N	O	S	0	4	0
			3664	2344	624	679	17			

There are 24 discrepancies between the modelled and reference sequences:

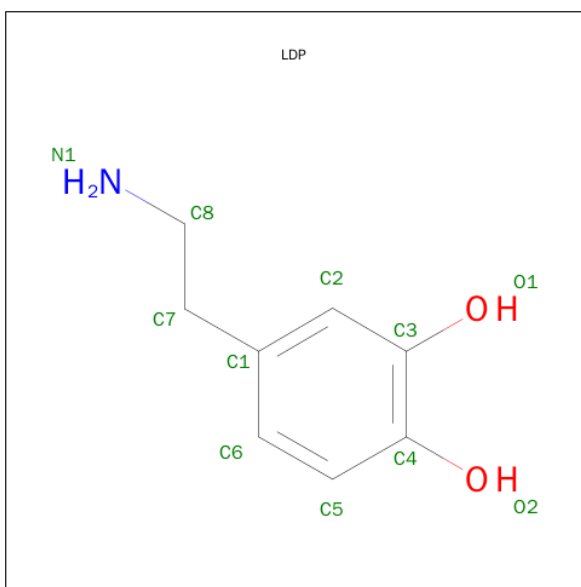
Chain	Residue	Modelled	Actual	Comment	Reference
A	263	ALA	ILE	ENGINEERED MUTATION	UNP P14779
A	268	ALA	THR	ENGINEERED MUTATION	UNP P14779
A	328	GLY	ALA	ENGINEERED MUTATION	UNP P14779
A	438	VAL	THR	ENGINEERED MUTATION	UNP P14779
A	464	LEU	-	EXPRESSION TAG	UNP P14779
A	465	GLU	-	EXPRESSION TAG	UNP P14779
A	466	HIS	-	EXPRESSION TAG	UNP P14779
A	467	HIS	-	EXPRESSION TAG	UNP P14779
A	468	HIS	-	EXPRESSION TAG	UNP P14779
A	469	HIS	-	EXPRESSION TAG	UNP P14779
A	470	HIS	-	EXPRESSION TAG	UNP P14779
A	471	HIS	-	EXPRESSION TAG	UNP P14779
B	263	ALA	ILE	ENGINEERED MUTATION	UNP P14779
B	268	ALA	THR	ENGINEERED MUTATION	UNP P14779
B	328	GLY	ALA	ENGINEERED MUTATION	UNP P14779
B	438	VAL	THR	ENGINEERED MUTATION	UNP P14779
B	464	LEU	-	EXPRESSION TAG	UNP P14779
B	465	GLU	-	EXPRESSION TAG	UNP P14779
B	466	HIS	-	EXPRESSION TAG	UNP P14779
B	467	HIS	-	EXPRESSION TAG	UNP P14779
B	468	HIS	-	EXPRESSION TAG	UNP P14779
B	469	HIS	-	EXPRESSION TAG	UNP P14779
B	470	HIS	-	EXPRESSION TAG	UNP P14779
B	471	HIS	-	EXPRESSION TAG	UNP P14779

- Molecule 2 is PROTOPORPHYRIN IX CONTAINING FE (three-letter code: HEM) (formula: $C_{34}H_{32}FeN_4O_4$).



Mol	Chain	Residues	Atoms					ZeroOcc	AltConf
2	A	1	Total	C	Fe	N	O	0	0
			43	34	1	4	4		
2	B	1	Total	C	Fe	N	O	0	0
			43	34	1	4	4		

- Molecule 3 is L-DOPAMINE (three-letter code: LDP) (formula: $C_8H_{11}NO_2$).



Mol	Chain	Residues	Atoms				ZeroOcc	AltConf
3	A	1	Total	C	N	O	0	0
			11	8	1	2		
3	B	1	Total	C	N	O	0	0
			11	8	1	2		

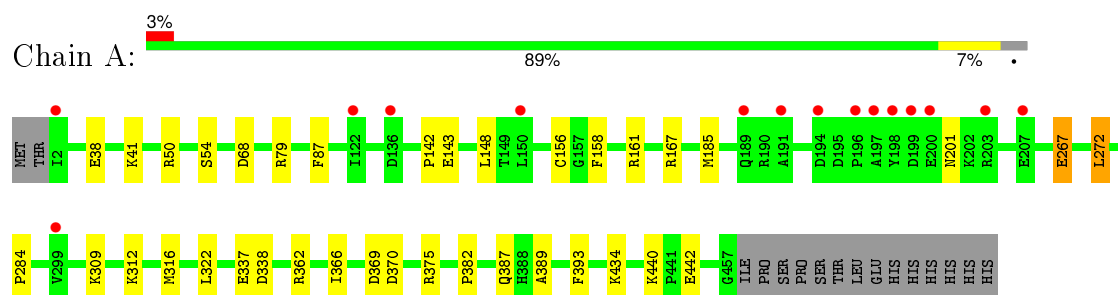
- Molecule 4 is water.

Mol	Chain	Residues	Atoms		ZeroOcc	AltConf
4	A	346	Total	O	0	0
			346	346		
4	B	385	Total	O	0	0
			385	385		

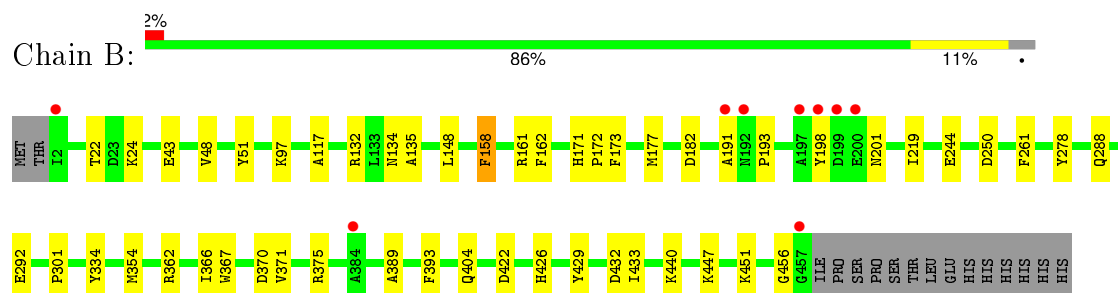
3 Residue-property plots [i](#)

These plots are drawn for all protein, RNA and DNA chains in the entry. The first graphic for a chain summarises the proportions of errors displayed in the second graphic. The second graphic shows the sequence view annotated by issues in geometry and electron density. Residues are color-coded according to the number of geometric quality criteria for which they contain at least one outlier: green = 0, yellow = 1, orange = 2 and red = 3 or more. A red dot above a residue indicates a poor fit to the electron density ($RSRZ > 2$). Stretches of 2 or more consecutive residues without any outlier are shown as a green connector. Residues present in the sample, but not in the model, are shown in grey.

- Molecule 1: cytochrome P450 BM3 variant 9D7



- Molecule 1: cytochrome P450 BM3 variant 9D7



4 Data and refinement statistics

Property	Value	Source
Space group	P 1 21 1	Depositor
Cell constants a, b, c, α , β , γ	58.91Å 153.58Å 61.10Å 90.00° 95.10° 90.00°	Depositor
Resolution (Å)	38.58 – 1.70 38.58 – 1.70	Depositor EDS
% Data completeness (in resolution range)	97.6 (38.58-1.70) 97.6 (38.58-1.70)	Depositor EDS
R_{merge}	(Not available)	Depositor
R_{sym}	0.05	Depositor
$\langle I/\sigma(I) \rangle$ ¹	2.03 (at 1.70Å)	Xtriage
Refinement program	REFMAC 5.5.0109	Depositor
R, R_{free}	0.164 , 0.204 0.165 , 0.205	Depositor DCC
R_{free} test set	5966 reflections (5.44%)	DCC
Wilson B-factor (Å ²)	24.5	Xtriage
Anisotropy	0.109	Xtriage
Bulk solvent k_{sol} (e/Å ³), B_{sol} (Å ²)	0.36 , 46.1	EDS
Estimated twinning fraction	0.026 for l,-k,h	Xtriage
L-test for twinning ²	$\langle L \rangle = 0.48$, $\langle L^2 \rangle = 0.31$	Xtriage
Outliers	0 of 115433 reflections	Xtriage
F_o, F_c correlation	0.97	EDS
Total number of atoms	8167	wwPDB-VP
Average B, all atoms (Å ²)	29.0	wwPDB-VP

Xtriage's analysis on translational NCS is as follows: *The largest off-origin peak in the Patterson function is 4.25% of the height of the origin peak. No significant pseudotranslation is detected.*

¹Intensities estimated from amplitudes.

²Theoretical values of $\langle |L| \rangle$, $\langle L^2 \rangle$ for acentric reflections are 0.5, 0.375 respectively for untwinned datasets, and 0.333, 0.2 for perfectly twinned datasets.

5 Model quality [i](#)

5.1 Standard geometry [i](#)

Bond lengths and bond angles in the following residue types are not validated in this section: HEM, LDP

The Z score for a bond length (or angle) is the number of standard deviations the observed value is removed from the expected value. A bond length (or angle) with $|Z| > 5$ is considered an outlier worth inspection. RMSZ is the root-mean-square of all Z scores of the bond lengths (or angles).

Mol	Chain	Bond lengths		Bond angles	
		RMSZ	# Z >5	RMSZ	# Z >5
1	A	1.25	7/3752 (0.2%)	1.03	10/5073 (0.2%)
1	B	1.32	9/3758 (0.2%)	1.10	12/5081 (0.2%)
All	All	1.29	16/7510 (0.2%)	1.07	22/10154 (0.2%)

All (16) bond length outliers are listed below:

Mol	Chain	Res	Type	Atoms	Z	Observed(Å)	Ideal(Å)
1	B	429	TYR	CD1-CE1	6.81	1.49	1.39
1	B	393	PHE	CE1-CZ	6.60	1.49	1.37
1	B	334	TYR	CE2-CZ	6.02	1.46	1.38
1	B	162	PHE	CE2-CZ	5.84	1.48	1.37
1	B	292	GLU	CB-CG	5.73	1.63	1.52
1	A	156	CYS	CB-SG	-5.59	1.72	1.81
1	B	117	ALA	CA-CB	5.55	1.64	1.52
1	A	87	PHE	CE1-CZ	5.52	1.47	1.37
1	B	135	ALA	CA-CB	5.45	1.63	1.52
1	B	173	PHE	CE1-CZ	5.41	1.47	1.37
1	B	278	TYR	CG-CD1	5.35	1.46	1.39
1	A	337	GLU	CG-CD	5.35	1.59	1.51
1	A	272	LEU	C-O	5.34	1.33	1.23
1	A	267	GLU	CD-OE1	5.27	1.31	1.25
1	A	143	GLU	CB-CG	5.12	1.61	1.52
1	A	393	PHE	CE1-CZ	5.06	1.47	1.37

All (22) bond angle outliers are listed below:

Mol	Chain	Res	Type	Atoms	Z	Observed(°)	Ideal(°)
1	A	161	ARG	NE-CZ-NH2	-8.97	115.81	120.30
1	B	182	ASP	CB-CG-OD1	7.93	125.44	118.30
1	B	177	MET	CG-SD-CE	-7.83	87.67	100.20

Continued on next page...

Continued from previous page...

Mol	Chain	Res	Type	Atoms	Z	Observed(°)	Ideal(°)
1	B	161	ARG	NE-CZ-NH2	-7.56	116.52	120.30
1	B	250	ASP	CB-CG-OD1	7.53	125.08	118.30
1	B	132	ARG	NE-CZ-NH2	-7.40	116.60	120.30
1	A	338	ASP	CB-CG-OD1	7.07	124.67	118.30
1	A	50	ARG	NE-CZ-NH2	-6.41	117.09	120.30
1	A	79	ARG	NE-CZ-NH1	6.20	123.40	120.30
1	A	185	MET	CG-SD-CE	6.20	110.11	100.20
1	A	167	ARG	NE-CZ-NH2	-6.18	117.21	120.30
1	B	182	ASP	CB-CG-OD2	-6.05	112.86	118.30
1	A	68	ASP	CB-CG-OD2	-5.98	112.92	118.30
1	B	250	ASP	CB-CG-OD2	-5.95	112.94	118.30
1	A	161	ARG	NE-CZ-NH1	5.65	123.13	120.30
1	A	369	ASP	CB-CG-OD1	5.61	123.34	118.30
1	B	362	ARG	NE-CZ-NH1	5.38	122.99	120.30
1	A	362	ARG	NE-CZ-NH2	-5.21	117.69	120.30
1	B	161	ARG	NE-CZ-NH1	5.16	122.88	120.30
1	B	432	ASP	CB-CG-OD1	5.10	122.89	118.30
1	B	362	ARG	NE-CZ-NH2	-5.05	117.78	120.30
1	B	440	LYS	CD-CE-NZ	-5.02	100.16	111.70

There are no chirality outliers.

There are no planarity outliers.

5.2 Too-close contacts

In the following table, the Non-H and H(model) columns list the number of non-hydrogen atoms and hydrogen atoms in the chain respectively. The H(added) column lists the number of hydrogen atoms added and optimized by MolProbity. The Clashes column lists the number of clashes within the asymmetric unit, whereas Symm-Clashes lists symmetry related clashes.

Mol	Chain	Non-H	H(model)	H(added)	Clashes	Symm-Clashes
1	A	3664	0	3616	25	0
1	B	3664	0	3626	22	0
2	A	43	0	30	3	0
2	B	43	0	30	1	0
3	A	11	0	11	1	0
3	B	11	0	10	0	0
4	A	346	0	0	8	1
4	B	385	0	0	5	1
All	All	8167	0	7323	51	1

The all-atom clashscore is defined as the number of clashes found per 1000 atoms (including hydrogen atoms). The all-atom clashscore for this structure is 3.

All (51) close contacts within the same asymmetric unit are listed below, sorted by their clash magnitude.

Atom-1	Atom-2	Interatomic distance (Å)	Clash overlap (Å)
1:A:312:LYS:HG2	1:A:316:MET:CE	1.75	1.16
1:A:312:LYS:HG2	1:A:316:MET:HE3	1.10	1.09
1:A:312:LYS:CG	1:A:316:MET:HE3	2.00	0.88
1:A:312:LYS:CG	1:A:316:MET:CE	2.55	0.83
1:A:267:GLU:OE2	4:A:921:HOH:O	1.97	0.83
1:B:370:ASP:OD2	1:B:375:ARG:NH1	2.14	0.80
1:B:158:PHE:CE1	1:B:219:ILE:HD13	2.19	0.76
1:A:309:LYS:NZ	4:A:931:HOH:O	2.29	0.61
1:A:370:ASP:OD2	1:A:375:ARG:NH2	2.28	0.60
1:A:41:LYS:NZ	4:A:813:HOH:O	2.34	0.59
2:A:500:HEM:HMC1	2:A:500:HEM:HBC2	1.84	0.58
1:A:312:LYS:HE2	1:A:316:MET:HE1	1.86	0.57
1:B:244:GLU:CG	4:B:961:HOH:O	2.54	0.56
1:B:244:GLU:HG3	4:B:961:HOH:O	2.04	0.56
1:A:312:LYS:HG2	1:A:316:MET:HE1	1.81	0.56
1:B:51:TYR:CE1	1:B:354:MET:HG2	2.41	0.56
1:B:191:ALA:O	1:B:193:PRO:HD3	2.07	0.55
1:B:198:TYR:HA	1:B:201:ASN:HD22	1.73	0.54
1:A:440:LYS:HB3	4:A:695:HOH:O	2.09	0.52
1:B:404[A]:GLN:H	1:B:404[A]:GLN:NE2	2.07	0.52
1:B:134:ASN:OD1	4:B:963:HOH:O	2.18	0.51
1:A:434:LYS:HD3	1:A:440:LYS:HE2	1.92	0.50
1:A:312:LYS:HE2	1:A:316:MET:CE	2.42	0.50
2:B:500:HEM:HBC2	2:B:500:HEM:HMC1	1.94	0.50
1:A:201:ASN:HD22	1:A:201:ASN:H	1.60	0.50
1:B:261:PHE:CE1	4:B:980:HOH:O	2.54	0.48
1:B:158:PHE:CE1	1:B:219:ILE:CD1	2.92	0.48
1:A:272:LEU:HD13	1:A:322:LEU:HG	1.98	0.46
1:A:382:PRO:HD2	4:A:647:HOH:O	2.16	0.45
1:B:301:PRO:HB2	1:B:456:GLY:HA3	1.98	0.45
1:B:367:TRP:HB2	1:B:371:VAL:HG12	1.98	0.45
1:A:434:LYS:HD2	1:A:442:GLU:OE1	2.17	0.45
2:A:500:HEM:C3A	3:A:501:LDP:H2	2.52	0.44
1:A:440:LYS:HD2	4:A:934:HOH:O	2.18	0.43
1:B:288:GLN:OE1	4:B:982:HOH:O	2.21	0.43
1:A:440:LYS:HE3	4:A:934:HOH:O	2.19	0.43
1:B:24:LYS:HE2	1:B:433:ILE:O	2.19	0.43

Continued on next page...

Continued from previous page...

Atom-1	Atom-2	Interatomic distance (Å)	Clash overlap (Å)
1:A:312:LYS:CE	1:A:316:MET:HE1	2.48	0.42
1:A:267:GLU:CG	4:A:935:HOH:O	2.68	0.42
1:A:312:LYS:CE	1:A:316:MET:CE	2.98	0.42
2:A:500:HEM:CMC	2:A:500:HEM:HBC2	2.47	0.42
1:B:171:HIS:HA	1:B:172:PRO:HD3	1.89	0.42
1:B:97:LYS:HE2	1:B:244:GLU:OE2	2.21	0.41
1:A:38:GLU:HB2	1:A:54:SER:HB3	2.02	0.41
1:B:422:ASP:OD1	1:B:451:LYS:HE3	2.20	0.41
1:A:312:LYS:CD	1:A:316:MET:HE1	2.51	0.41
1:B:366:ILE:HG21	1:B:389:ALA:HB1	2.02	0.41
1:B:426:HIS:CD2	1:B:447:LYS:HE3	2.55	0.41
1:B:354:MET:HE3	1:B:354:MET:HB2	1.75	0.41
1:A:366:ILE:HG21	1:A:389:ALA:HB1	2.03	0.41
1:B:43:GLU:HG2	1:B:48:VAL:HG22	2.02	0.41

All (1) symmetry-related close contacts are listed below. The label for Atom-2 includes the symmetry operator and encoded unit-cell translations to be applied.

Atom-1	Atom-2	Interatomic distance (Å)	Clash overlap (Å)
4:A:939:HOH:O	4:B:969:HOH:O[2_556]	1.32	0.88

5.3 Torsion angles [i](#)

5.3.1 Protein backbone [i](#)

In the following table, the Percentiles column shows the percent Ramachandran outliers of the chain as a percentile score with respect to all X-ray entries followed by that with respect to entries of similar resolution.

The Analysed column shows the number of residues for which the backbone conformation was analysed, and the total number of residues.

Mol	Chain	Analysed	Favoured	Allowed	Outliers	Percentiles	
1	A	456/472 (97%)	445 (98%)	11 (2%)	0	100	100
1	B	458/472 (97%)	447 (98%)	11 (2%)	0	100	100
All	All	914/944 (97%)	892 (98%)	22 (2%)	0	100	100

There are no Ramachandran outliers to report.

5.3.2 Protein sidechains [i](#)

In the following table, the Percentiles column shows the percent sidechain outliers of the chain as a percentile score with respect to all X-ray entries followed by that with respect to entries of similar resolution.

The Analysed column shows the number of residues for which the sidechain conformation was analysed, and the total number of residues.

Mol	Chain	Analysed	Rotameric	Outliers	Percentiles	
1	A	394/412 (96%)	389 (99%)	5 (1%)	76	62
1	B	393/412 (95%)	390 (99%)	3 (1%)	86	79
All	All	787/824 (96%)	779 (99%)	8 (1%)	82	72

All (8) residues with a non-rotameric sidechain are listed below:

Mol	Chain	Res	Type
1	A	142	PRO
1	A	148	LEU
1	A	158	PHE
1	A	284	PRO
1	A	387	GLN
1	B	22	THR
1	B	148	LEU
1	B	158	PHE

Some sidechains can be flipped to improve hydrogen bonding and reduce clashes. All (2) such sidechains are listed below:

Mol	Chain	Res	Type
1	A	201	ASN
1	B	201	ASN

5.3.3 RNA [i](#)

There are no RNA molecules in this entry.

5.4 Non-standard residues in protein, DNA, RNA chains [i](#)

There are no non-standard protein/DNA/RNA residues in this entry.

5.5 Carbohydrates [i](#)

There are no carbohydrates in this entry.

5.6 Ligand geometry [i](#)

4 ligands are modelled in this entry.

In the following table, the Counts columns list the number of bonds (or angles) for which Mogul statistics could be retrieved, the number of bonds (or angles) that are observed in the model and the number of bonds (or angles) that are defined in the chemical component dictionary. The Link column lists molecule types, if any, to which the group is linked. The Z score for a bond length (or angle) is the number of standard deviations the observed value is removed from the expected value. A bond length (or angle) with $|Z| > 2$ is considered an outlier worth inspection. RMSZ is the root-mean-square of all Z scores of the bond lengths (or angles).

Mol	Type	Chain	Res	Link	Bond lengths			Bond angles		
					Counts	RMSZ	# $ Z > 2$	Counts	RMSZ	# $ Z > 2$
2	HEM	A	500	1,3	30,50,50	2.50	8 (26%)	24,82,82	2.45	8 (33%)
3	LDP	A	501	2	10,11,11	2.07	2 (20%)	13,14,14	1.55	3 (23%)
2	HEM	B	500	1,3	30,50,50	1.97	9 (30%)	24,82,82	2.89	14 (58%)
3	LDP	B	501	2	10,11,11	1.72	2 (20%)	13,14,14	2.92	6 (46%)

In the following table, the Chirals column lists the number of chiral outliers, the number of chiral centers analysed, the number of these observed in the model and the number defined in the chemical component dictionary. Similar counts are reported in the Torsion and Rings columns. '-' means no outliers of that kind were identified.

Mol	Type	Chain	Res	Link	Chirals	Torsions	Rings
2	HEM	A	500	1,3	-	0/10/54/54	0/0/8/8
3	LDP	A	501	2	-	0/3/3/3	0/1/1/1
2	HEM	B	500	1,3	-	0/10/54/54	0/0/8/8
3	LDP	B	501	2	-	0/3/3/3	0/1/1/1

All (21) bond length outliers are listed below:

Mol	Chain	Res	Type	Atoms	Z	Observed(Å)	Ideal(Å)
2	A	500	HEM	C3B-C4B	-8.26	1.44	1.51
2	A	500	HEM	C3D-C4D	-6.17	1.43	1.51
2	B	500	HEM	C3D-C4D	-4.50	1.45	1.51
2	B	500	HEM	C2C-C1C	-4.30	1.44	1.52
2	B	500	HEM	C3B-C4B	-4.25	1.48	1.51
2	A	500	HEM	C2D-C1D	-3.15	1.41	1.51

Continued on next page...

Continued from previous page...

Mol	Chain	Res	Type	Atoms	Z	Observed(Å)	Ideal(Å)
2	A	500	HEM	C2C-C1C	-3.11	1.46	1.52
2	B	500	HEM	C2D-C3D	-3.05	1.45	1.54
2	A	500	HEM	C2D-C3D	-2.59	1.46	1.54
2	B	500	HEM	FE-ND	2.18	2.09	1.97
2	A	500	HEM	CMD-C2D	2.19	1.58	1.53
2	B	500	HEM	CMB-C2B	2.28	1.58	1.53
2	B	500	HEM	CHC-C1C	2.30	1.41	1.36
3	B	501	LDP	C5-C4	2.41	1.44	1.39
2	B	500	HEM	CAA-C2A	2.47	1.56	1.52
3	B	501	LDP	C2-C1	2.74	1.44	1.39
3	A	501	LDP	C5-C6	2.81	1.43	1.38
2	A	500	HEM	C1C-NC	2.90	1.39	1.36
2	B	500	HEM	FE-NC	2.98	2.07	1.95
2	A	500	HEM	C4C-NC	4.61	1.41	1.36
3	A	501	LDP	C3-C4	5.37	1.49	1.40

All (31) bond angle outliers are listed below:

Mol	Chain	Res	Type	Atoms	Z	Observed(°)	Ideal(°)
3	B	501	LDP	C2-C3-C4	-5.99	114.38	119.82
3	B	501	LDP	C5-C6-C1	-5.28	113.81	121.04
2	B	500	HEM	CAA-C2A-C1A	-4.97	121.61	127.01
2	A	500	HEM	C3B-CAB-CBB	-3.46	119.14	124.46
2	B	500	HEM	C3B-CAB-CBB	-3.27	119.44	124.46
2	B	500	HEM	CBD-CAD-C3D	-3.27	104.05	113.55
2	B	500	HEM	CBA-CAA-C2A	-3.23	106.74	112.53
3	A	501	LDP	C6-C5-C4	-2.87	117.54	120.49
3	B	501	LDP	C7-C1-C6	-2.85	114.04	121.25
3	A	501	LDP	C3-C2-C1	-2.40	117.92	120.83
2	A	500	HEM	CBD-CAD-C3D	-2.33	106.77	113.55
2	B	500	HEM	CMA-C3A-C4A	-2.20	124.73	128.36
3	B	501	LDP	C8-C7-C1	-2.04	108.63	112.82
3	A	501	LDP	C6-C1-C2	2.36	122.03	118.55
2	B	500	HEM	C2D-C3D-C4D	2.58	105.86	101.50
2	A	500	HEM	CMD-C2D-C3D	2.71	126.32	114.35
2	B	500	HEM	C3C-CAC-CBC	2.73	128.64	124.46
2	A	500	HEM	C2D-C3D-C4D	2.82	106.28	101.50
2	B	500	HEM	C2C-C1C-CHC	3.04	128.31	123.68
2	B	500	HEM	CMD-C2D-C3D	3.13	128.19	114.35
3	B	501	LDP	C5-C4-C3	3.20	123.79	119.72
2	B	500	HEM	C1D-CHD-C4C	3.30	131.34	125.82
3	B	501	LDP	C6-C1-C2	3.73	124.07	118.55

Continued on next page...

Continued from previous page...

Mol	Chain	Res	Type	Atoms	Z	Observed(°)	Ideal(°)
2	B	500	HEM	CAD-C3D-C4D	3.77	125.75	112.47
2	A	500	HEM	CAD-C3D-C2D	4.05	124.85	113.22
2	B	500	HEM	CMC-C2C-C3C	4.22	127.07	116.53
2	A	500	HEM	CMC-C2C-C3C	4.63	128.08	116.53
2	A	500	HEM	CAD-C3D-C4D	4.65	128.85	112.47
2	B	500	HEM	CMB-C2B-C3B	4.82	128.57	116.53
2	B	500	HEM	CAD-C3D-C2D	5.27	128.38	113.22
2	A	500	HEM	CMB-C2B-C3B	6.27	132.19	116.53

There are no chirality outliers.

There are no torsion outliers.

There are no ring outliers.

3 monomers are involved in 4 short contacts:

Mol	Chain	Res	Type	Clashes	Symm-Clashes
2	A	500	HEM	3	0
3	A	501	LDP	1	0
2	B	500	HEM	1	0

5.7 Other polymers [i](#)

There are no such residues in this entry.

5.8 Polymer linkage issues [i](#)

There are no chain breaks in this entry.

6 Fit of model and data ⓘ

6.1 Protein, DNA and RNA chains ⓘ

In the following table, the column labelled ‘#RSRZ> 2’ contains the number (and percentage) of RSRZ outliers, followed by percent RSRZ outliers for the chain as percentile scores relative to all X-ray entries and entries of similar resolution. The OWAB column contains the minimum, median, 95th percentile and maximum values of the occupancy-weighted average B-factor per residue. The column labelled ‘Q< 0.9’ lists the number of (and percentage) of residues with an average occupancy less than 0.9.

Mol	Chain	Analysed	<RSRZ>	#RSRZ>2	OWAB(Å ²)	Q<0.9
1	A	456/472 (96%)	0.00	15 (3%) 50 54	17, 28, 49, 68	0
1	B	456/472 (96%)	-0.13	9 (1%) 68 73	14, 25, 47, 67	0
All	All	912/944 (96%)	-0.06	24 (2%) 59 64	14, 27, 47, 68	0

All (24) RSRZ outliers are listed below:

Mol	Chain	Res	Type	RSRZ
1	B	191	ALA	7.2
1	B	2	ILE	6.4
1	A	191	ALA	6.4
1	A	196	PRO	6.0
1	B	197	ALA	5.3
1	A	197	ALA	4.2
1	B	198	TYR	4.0
1	A	299	VAL	3.9
1	A	2	ILE	3.9
1	A	198	TYR	3.4
1	A	194	ASP	3.3
1	A	189	GLN	3.2
1	A	199	ASP	2.9
1	A	203	ARG	2.8
1	A	200	GLU	2.7
1	B	199	ASP	2.7
1	B	192	ASN	2.6
1	A	136	ASP	2.3
1	A	207	GLU	2.3
1	A	150	LEU	2.2
1	B	457	GLY	2.2
1	A	122	ILE	2.2
1	B	384	ALA	2.2
1	B	200	GLU	2.0

6.2 Non-standard residues in protein, DNA, RNA chains [i](#)

There are no non-standard protein/DNA/RNA residues in this entry.

6.3 Carbohydrates [i](#)

There are no carbohydrates in this entry.

6.4 Ligands [i](#)

In the following table, the Atoms column lists the number of modelled atoms in the group and the number defined in the chemical component dictionary. LLDF column lists the quality of electron density of the group with respect to its neighbouring residues in protein, DNA or RNA chains. The B-factors column lists the minimum, median, 95th percentile and maximum values of B factors of atoms in the group. The column labelled 'Q< 0.9' lists the number of atoms with occupancy less than 0.9.

Mol	Type	Chain	Res	Atoms	RSCC	RSR	LLDF	B-factors(\AA^2)	Q<0.9
3	LDP	B	501	11/11	0.96	0.17	2.43	14,17,21,22	0
3	LDP	A	501	11/11	0.98	0.15	0.95	16,20,24,24	0
2	HEM	A	500	43/43	0.99	0.12	0.31	13,17,22,28	0
2	HEM	B	500	43/43	0.99	0.11	-0.02	11,15,18,22	0

6.5 Other polymers [i](#)

There are no such residues in this entry.