



Full wwPDB X-ray Structure Validation Report ⓘ

Apr 28, 2016 – 04:58 AM EDT

PDB ID : 5DU5
Title : Crystal Structure of the ER-alpha Ligand-binding Domain in complex with a dichloro-substituted, 3,4-diarylthiophene dioxide core ligand
Authors : Nwachukwu, J.C.; Srinivasan, S.; Zheng, Y.; Wang, S.; Min, J.; Dong, C.; Liao, Z.; Cavett, V.; Nowak, J.; Houtman, R.; Carlson, K.E.; Josan, J.S.; Elemento, O.; Katzenellenbogen, J.A.; Zhou, H.B.; Nettles, K.W.
Deposited on : 2015-09-18
Resolution : 2.19 Å(reported)

This is a Full wwPDB X-ray Structure Validation Report for a publicly released PDB entry.
We welcome your comments at validation@mail.wwpdb.org
A user guide is available at
<http://wwpdb.org/validation/2016/XrayValidationReportHelp>
with specific help available everywhere you see the ⓘ symbol.

The following versions of software and data (see [references ⓘ](#)) were used in the production of this report:

MolProbity : 4.02b-467
Mogul : 1.7.1 (RC1), CSD as537be (2016)
Xtriage (Phenix) : 1.9-1692
EDS : rb-20027457
Percentile statistics : 20151230.v01 (using entries in the PDB archive December 30th 2015)
Refmac : 5.8.0135
CCP4 : 6.5.0
Ideal geometry (proteins) : Engh & Huber (2001)
Ideal geometry (DNA, RNA) : Parkinson et al. (1996)
Validation Pipeline (wwPDB-VP) : rb-20027457

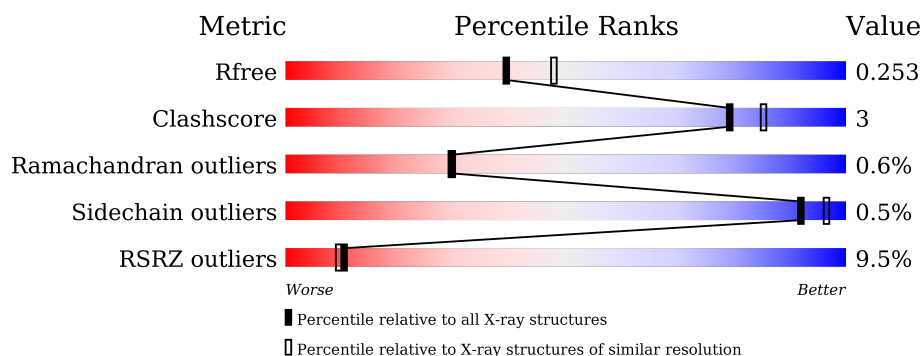
1 Overall quality at a glance

The following experimental techniques were used to determine the structure:

X-RAY DIFFRACTION

The reported resolution of this entry is 2.19 Å.

Percentile scores (ranging between 0-100) for global validation metrics of the entry are shown in the following graphic. The table shows the number of entries on which the scores are based.



Metric	Whole archive (#Entries)	Similar resolution (#Entries, resolution range(Å))
R_{free}	91344	3774 (2.20-2.20)
Clashscore	102246	4477 (2.20-2.20)
Ramachandran outliers	100387	4404 (2.20-2.20)
Sidechain outliers	100360	4405 (2.20-2.20)
RSRZ outliers	91569	3781 (2.20-2.20)

The table below summarises the geometric issues observed across the polymeric chains and their fit to the electron density. The red, orange, yellow and green segments on the lower bar indicate the fraction of residues that contain outliers for ≥ 3 , 2, 1 and 0 types of geometric quality criteria. A grey segment represents the fraction of residues that are not modelled. The numeric value for each fraction is indicated below the corresponding segment, with a dot representing fractions $\leq 5\%$. The upper red bar (where present) indicates the fraction of residues that have poor fit to the electron density. The numeric value is given above the bar.

Mol	Chain	Length	Quality of chain
1	A	257	<div> <div>8%</div> <div>82%</div> <div>7%</div> <div>10%</div> </div>
1	B	257	<div> <div>9%</div> <div>82%</div> <div>9%</div> <div>9%</div> </div>
2	C	14	<div> <div>50%</div> <div>14%</div> <div>36%</div> </div>
2	D	14	<div> <div>14%</div> <div>64%</div> <div>36%</div> </div>

2 Entry composition

There are 4 unique types of molecules in this entry. The entry contains 3815 atoms, of which 0 are hydrogens and 0 are deuteriums.

In the tables below, the ZeroOcc column contains the number of atoms modelled with zero occupancy, the AltConf column contains the number of residues with at least one atom in alternate conformation and the Trace column contains the number of residues modelled with at most 2 atoms.

- Molecule 1 is a protein called Estrogen receptor.

Mol	Chain	Residues	Atoms					ZeroOcc	AltConf	Trace
1	A	231	Total	C	N	O	S	0	1	0
			1792	1145	306	322	19			
1	B	235	Total	C	N	O	S	0	0	0
			1798	1147	309	323	19			

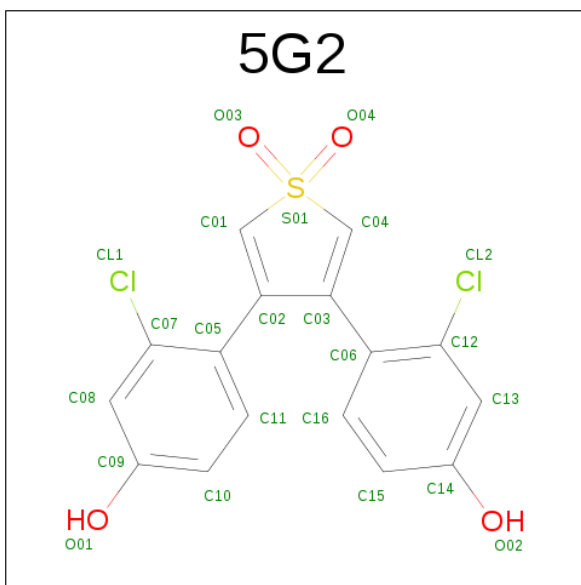
There are 2 discrepancies between the modelled and reference sequences:

Chain	Residue	Modelled	Actual	Comment	Reference
A	537	SER	TYR	engineered mutation	UNP P03372
B	537	SER	TYR	engineered mutation	UNP P03372

- Molecule 2 is a protein called Nuclear receptor coactivator 2.

Mol	Chain	Residues	Atoms				ZeroOcc	AltConf	Trace
2	C	9	Total	C	N	O	0	0	0
			62	42	11	9			
2	D	9	Total	C	N	O	0	0	0
			69	45	12	12			

- Molecule 3 is 3,4-bis(2-chloro-4-hydroxyphenyl)-1H-1lambda 6 -thiophene-1,1-dione (three-letter code: 5G2) (formula: C₁₆H₁₀Cl₂O₄S).



Mol	Chain	Residues	Atoms					ZeroOcc	AltConf
3	A	1	Total	C	Cl	O	S	0	0
			23	16	2	4	1		
3	B	1	Total	C	Cl	O	S	0	0
			23	16	2	4	1		

- Molecule 4 is water.

Mol	Chain	Residues	Atoms		ZeroOcc	AltConf
4	A	20	Total	O	0	0
			20	20		
4	B	28	Total	O	0	0
			28	28		

4 Data and refinement statistics

Property	Value	Source
Space group	P 1 21 1	Depositor
Cell constants a, b, c, α , β , γ	55.48Å 82.71Å 58.94Å 90.00° 110.75° 90.00°	Depositor
Resolution (Å)	46.99 – 2.19 46.99 – 2.20	Depositor EDS
% Data completeness (in resolution range)	90.8 (46.99-2.19) 79.9 (46.99-2.20)	Depositor EDS
R_{merge}	0.08	Depositor
R_{sym}	(Not available)	Depositor
$\langle I/\sigma(I) \rangle$ ¹	5.99 (at 2.20Å)	Xtriage
Refinement program	PHENIX (phenix.refine: 1.9_1690)	Depositor
R, R_{free}	0.199 , 0.250 0.206 , 0.253	Depositor DCC
R_{free} test set	1643 reflections (8.11%)	DCC
Wilson B-factor (Å ²)	30.3	Xtriage
Anisotropy	0.060	Xtriage
Bulk solvent k_{sol} (e/Å ³), B_{sol} (Å ²)	0.30 , 53.3	EDS
L-test for twinning ²	$\langle L \rangle = 0.50$, $\langle L^2 \rangle = 0.33$	Xtriage
Estimated twinning fraction	No twinning to report.	Xtriage
F_o, F_c correlation	0.93	EDS
Total number of atoms	3815	wwPDB-VP
Average B, all atoms (Å ²)	71.0	wwPDB-VP

Xtriage's analysis on translational NCS is as follows: *The largest off-origin peak in the Patterson function is 6.99% of the height of the origin peak. No significant pseudotranslation is detected.*

¹Intensities estimated from amplitudes.

²Theoretical values of $\langle |L| \rangle$, $\langle L^2 \rangle$ for acentric reflections are 0.5, 0.375 respectively for untwinned datasets, and 0.333, 0.2 for perfectly twinned datasets.

5 Model quality [i](#)

5.1 Standard geometry [i](#)

Bond lengths and bond angles in the following residue types are not validated in this section: 5G2

The Z score for a bond length (or angle) is the number of standard deviations the observed value is removed from the expected value. A bond length (or angle) with $|Z| > 5$ is considered an outlier worth inspection. RMSZ is the root-mean-square of all Z scores of the bond lengths (or angles).

Mol	Chain	Bond lengths		Bond angles	
		RMSZ	$\# Z > 5$	RMSZ	$\# Z > 5$
1	A	0.28	0/1822	0.36	0/2466
1	B	0.27	0/1827	0.40	0/2472
2	C	0.17	0/62	0.32	0/84
2	D	0.19	0/69	0.40	0/93
All	All	0.27	0/3780	0.38	0/5115

There are no bond length outliers.

There are no bond angle outliers.

There are no chirality outliers.

There are no planarity outliers.

5.2 Too-close contacts [i](#)

In the following table, the Non-H and H(model) columns list the number of non-hydrogen atoms and hydrogen atoms in the chain respectively. The H(added) column lists the number of hydrogen atoms added and optimized by MolProbity. The Clashes column lists the number of clashes within the asymmetric unit, whereas Symm-Clashes lists symmetry related clashes.

Mol	Chain	Non-H	H(model)	H(added)	Clashes	Symm-Clashes
1	A	1792	0	1795	10	1
1	B	1798	0	1792	16	1
2	C	62	0	58	2	0
2	D	69	0	66	0	0
3	A	23	0	0	1	0
3	B	23	0	0	1	0
4	A	20	0	0	1	0
4	B	28	0	0	0	0
All	All	3815	0	3711	26	1

The all-atom clashscore is defined as the number of clashes found per 1000 atoms (including hydrogen atoms). The all-atom clashscore for this structure is 3.

All (26) close contacts within the same asymmetric unit are listed below, sorted by their clash magnitude.

Atom-1	Atom-2	Interatomic distance (Å)	Clash overlap (Å)
1:A:480:ASP:OD2	4:A:701:HOH:O	2.15	0.65
1:A:353:GLU:OE1	3:A:601:5G2:O01	2.19	0.60
1:A:376:VAL:HG13	2:C:690:LEU:HD23	1.85	0.59
1:B:335:ARG:O	1:B:337:PHE:N	2.39	0.55
1:A:498:GLN:HA	1:A:501:HIS:CE1	2.44	0.53
1:A:537:SER:HB3	1:A:540:LEU:HB2	1.92	0.51
1:B:359:ASN:HA	1:B:362:LYS:HD3	1.91	0.51
1:B:497:LEU:N	1:B:497:LEU:CD2	2.73	0.51
1:B:497:LEU:N	1:B:497:LEU:HD22	2.25	0.50
1:B:529:LYS:HA	1:B:536:LEU:HD11	1.97	0.47
1:A:362:LYS:NZ	2:C:696:ASP:O	2.45	0.47
1:B:353:GLU:OE1	3:B:601:5G2:O01	2.33	0.47
1:A:539:LEU:O	1:A:543:MET:HG2	2.15	0.47
1:B:536:LEU:HD13	1:B:541:LEU:HD21	1.98	0.46
1:B:372:LEU:C	1:B:374:ASP:H	2.20	0.45
1:A:424:ILE:HD13	1:A:521:GLY:HA2	1.99	0.45
1:B:311:THR:HG23	1:B:314:GLN:H	1.82	0.44
1:A:487:ILE:HD11	1:A:504:LEU:HD22	2.00	0.44
1:B:539:LEU:O	1:B:543:MET:HG2	2.18	0.43
1:B:506:GLN:O	1:B:510:ILE:HG12	2.19	0.43
1:B:495:LEU:O	1:B:496:THR:HG23	2.19	0.43
1:A:316:VAL:HG21	1:A:489:LEU:HD21	1.99	0.43
1:B:316:VAL:HG21	1:B:489:LEU:HD21	2.02	0.41
1:B:487:ILE:HD11	1:B:504:LEU:HD22	2.03	0.41
1:B:497:LEU:H	1:B:497:LEU:CD2	2.33	0.41
1:B:495:LEU:O	1:B:496:THR:OG1	2.25	0.41

All (1) symmetry-related close contacts are listed below. The label for Atom-2 includes the symmetry operator and encoded unit-cell translations to be applied.

Atom-1	Atom-2	Interatomic distance (Å)	Clash overlap (Å)
1:A:359:ASN:ND2	1:B:328:TYR:OH[1_554]	2.15	0.05

5.3 Torsion angles [i](#)

5.3.1 Protein backbone [i](#)

In the following table, the Percentiles column shows the percent Ramachandran outliers of the chain as a percentile score with respect to all X-ray entries followed by that with respect to entries of similar resolution.

The Analysed column shows the number of residues for which the backbone conformation was analysed, and the total number of residues.

Mol	Chain	Analysed	Favoured	Allowed	Outliers	Percentiles	
1	A	226/257 (88%)	221 (98%)	5 (2%)	0	100	100
1	B	229/257 (89%)	217 (95%)	9 (4%)	3 (1%)	15	11
2	C	7/14 (50%)	7 (100%)	0	0	100	100
2	D	7/14 (50%)	7 (100%)	0	0	100	100
All	All	469/542 (86%)	452 (96%)	14 (3%)	3 (1%)	30	29

All (3) Ramachandran outliers are listed below:

Mol	Chain	Res	Type
1	B	336	PRO
1	B	536	LEU
1	B	496	THR

5.3.2 Protein sidechains [i](#)

In the following table, the Percentiles column shows the percent sidechain outliers of the chain as a percentile score with respect to all X-ray entries followed by that with respect to entries of similar resolution.

The Analysed column shows the number of residues for which the sidechain conformation was analysed, and the total number of residues.

Mol	Chain	Analysed	Rotameric	Outliers	Percentiles	
1	A	195/232 (84%)	193 (99%)	2 (1%)	82	91
1	B	192/232 (83%)	192 (100%)	0	100	100
2	C	5/14 (36%)	5 (100%)	0	100	100
2	D	7/14 (50%)	7 (100%)	0	100	100
All	All	399/492 (81%)	397 (100%)	2 (0%)	92	96

All (2) residues with a non-rotameric sidechain are listed below:

Mol	Chain	Res	Type
1	A	425	PHE
1	A	545	ASP

Some sidechains can be flipped to improve hydrogen bonding and reduce clashes. All (3) such sidechains are listed below:

Mol	Chain	Res	Type
1	A	414	GLN
1	B	414	GLN
1	B	519	ASN

5.3.3 RNA [i](#)

There are no RNA molecules in this entry.

5.4 Non-standard residues in protein, DNA, RNA chains [i](#)

There are no non-standard protein/DNA/RNA residues in this entry.

5.5 Carbohydrates [i](#)

There are no carbohydrates in this entry.

5.6 Ligand geometry [i](#)

2 ligands are modelled in this entry.

In the following table, the Counts columns list the number of bonds (or angles) for which Mogul statistics could be retrieved, the number of bonds (or angles) that are observed in the model and the number of bonds (or angles) that are defined in the chemical component dictionary. The Link column lists molecule types, if any, to which the group is linked. The Z score for a bond length (or angle) is the number of standard deviations the observed value is removed from the expected value. A bond length (or angle) with $|Z| > 2$ is considered an outlier worth inspection. RMSZ is the root-mean-square of all Z scores of the bond lengths (or angles).

Mol	Type	Chain	Res	Link	Bond lengths			Bond angles		
					Counts	RMSZ	$\# Z > 2$	Counts	RMSZ	$\# Z > 2$
3	5G2	A	601	-	21,25,25	4.66	17 (80%)	27,38,38	2.60	11 (40%)
3	5G2	B	601	-	21,25,25	4.89	16 (76%)	27,38,38	2.43	9 (33%)

In the following table, the Chirals column lists the number of chiral outliers, the number of chiral

centers analysed, the number of these observed in the model and the number defined in the chemical component dictionary. Similar counts are reported in the Torsion and Rings columns. '-' means no outliers of that kind were identified.

Mol	Type	Chain	Res	Link	Chirals	Torsions	Rings
3	5G2	A	601	-	-	0/8/22/22	0/3/3/3
3	5G2	B	601	-	-	0/8/22/22	0/3/3/3

All (33) bond length outliers are listed below:

Mol	Chain	Res	Type	Atoms	Z	Observed(Å)	Ideal(Å)
3	B	601	5G2	C06-C03	-12.82	1.33	1.49
3	A	601	5G2	C06-C03	-11.85	1.34	1.49
3	A	601	5G2	C05-C02	-11.69	1.34	1.49
3	B	601	5G2	C05-C02	-11.35	1.35	1.49
3	B	601	5G2	C08-C09	-5.38	1.30	1.39
3	B	601	5G2	C06-C12	-5.32	1.32	1.39
3	A	601	5G2	C08-C09	-4.80	1.31	1.39
3	A	601	5G2	C06-C12	-4.68	1.33	1.39
3	B	601	5G2	C05-C07	-4.45	1.33	1.39
3	B	601	5G2	C13-C14	-4.33	1.32	1.39
3	B	601	5G2	C08-C07	-4.06	1.31	1.38
3	A	601	5G2	C11-C05	-4.02	1.33	1.39
3	B	601	5G2	C11-C05	-3.89	1.33	1.39
3	A	601	5G2	C13-C14	-3.85	1.33	1.39
3	B	601	5G2	C13-C12	-3.61	1.32	1.38
3	A	601	5G2	C08-C07	-3.58	1.32	1.38
3	A	601	5G2	C16-C06	-3.53	1.34	1.39
3	B	601	5G2	C16-C06	-3.51	1.34	1.39
3	A	601	5G2	C13-C12	-3.27	1.33	1.38
3	A	601	5G2	C05-C07	-3.24	1.34	1.39
3	B	601	5G2	C10-C09	-3.14	1.32	1.38
3	B	601	5G2	C03-C02	-2.92	1.34	1.46
3	A	601	5G2	C10-C09	-2.90	1.33	1.38
3	A	601	5G2	C03-C02	-2.87	1.34	1.46
3	B	601	5G2	C16-C15	-2.85	1.33	1.38
3	B	601	5G2	C11-C10	-2.84	1.33	1.38
3	B	601	5G2	C15-C14	-2.80	1.33	1.38
3	A	601	5G2	C15-C14	-2.78	1.33	1.38
3	A	601	5G2	C11-C10	-2.70	1.33	1.38
3	A	601	5G2	O04-S01	-2.62	1.40	1.44
3	A	601	5G2	C16-C15	-2.50	1.33	1.38
3	A	601	5G2	O03-S01	-2.35	1.41	1.44
3	B	601	5G2	O04-S01	-2.14	1.41	1.44

All (20) bond angle outliers are listed below:

Mol	Chain	Res	Type	Atoms	Z	Observed(°)	Ideal(°)
3	A	601	5G2	C08-C07-CL1	-5.02	110.34	118.46
3	B	601	5G2	C08-C07-CL1	-4.10	111.82	118.46
3	A	601	5G2	C15-C14-C13	-4.10	115.47	120.21
3	A	601	5G2	C10-C09-C08	-3.35	116.33	120.21
3	B	601	5G2	C11-C05-C07	-3.33	113.80	117.80
3	B	601	5G2	C10-C09-C08	-3.21	116.49	120.21
3	A	601	5G2	C13-C12-CL2	-3.14	113.37	118.46
3	B	601	5G2	C15-C14-C13	-3.13	116.58	120.21
3	A	601	5G2	C16-C06-C12	-2.82	114.41	117.80
3	A	601	5G2	C11-C05-C07	-2.69	114.57	117.80
3	B	601	5G2	C13-C12-CL2	-2.13	115.02	118.46
3	B	601	5G2	C09-C08-C07	2.16	122.78	118.43
3	A	601	5G2	C13-C12-C06	2.20	123.10	121.56
3	A	601	5G2	C12-C06-C03	2.59	126.14	122.10
3	B	601	5G2	C05-C07-CL1	2.90	125.46	121.03
3	B	601	5G2	C07-C05-C02	3.18	127.07	122.10
3	A	601	5G2	C07-C05-C02	3.85	128.12	122.10
3	A	601	5G2	C05-C07-CL1	4.13	127.35	121.03
3	A	601	5G2	O04-S01-O03	5.94	123.23	117.40
3	B	601	5G2	O04-S01-O03	7.93	125.18	117.40

There are no chirality outliers.

There are no torsion outliers.

There are no ring outliers.

2 monomers are involved in 2 short contacts:

Mol	Chain	Res	Type	Clashes	Symm-Clashes
3	A	601	5G2	1	0
3	B	601	5G2	1	0

5.7 Other polymers [i](#)

There are no such residues in this entry.

5.8 Polymer linkage issues [i](#)

There are no chain breaks in this entry.

6 Fit of model and data ⓘ

6.1 Protein, DNA and RNA chains ⓘ

In the following table, the column labelled ‘#RSRZ> 2’ contains the number (and percentage) of RSRZ outliers, followed by percent RSRZ outliers for the chain as percentile scores relative to all X-ray entries and entries of similar resolution. The OWAB column contains the minimum, median, 95th percentile and maximum values of the occupancy-weighted average B-factor per residue. The column labelled ‘Q< 0.9’ lists the number of (and percentage) of residues with an average occupancy less than 0.9.

Mol	Chain	Analysed	<RSRZ>	#RSRZ>2	OWAB(Å ²)	Q<0.9
1	A	231/257 (89%)	0.73	21 (9%) 11 11	41, 68, 101, 123	0
1	B	235/257 (91%)	0.74	23 (9%) 10 8	40, 69, 111, 131	0
2	C	9/14 (64%)	0.91	0 100 100	76, 91, 102, 108	0
2	D	9/14 (64%)	1.12	2 (22%) 1 1	81, 91, 106, 111	0
All	All	484/542 (89%)	0.75	46 (9%) 10 9	40, 69, 108, 131	0

All (46) RSRZ outliers are listed below:

Mol	Chain	Res	Type	RSRZ
1	B	334	THR	8.4
1	A	459	TYR	6.2
1	B	459	TYR	5.4
1	A	331	TYR	4.9
1	B	549	LEU	4.8
1	A	534	VAL	4.7
1	A	336	PRO	4.5
1	A	535	PRO	4.0
1	B	547	HIS	4.0
1	A	533	VAL	3.9
1	B	335	ARG	3.7
2	D	695	GLN	3.6
1	A	305	SER	3.6
1	B	321	ASP	3.4
1	A	532	ASN	3.3
1	A	471	GLU	3.1
1	B	532	ASN	3.1
1	B	306	LEU	3.1
1	B	527	SER	3.1
1	B	417	CYS	3.0
1	B	494	GLY	3.0

Continued on next page...

Continued from previous page...

Mol	Chain	Res	Type	RSRZ
1	A	461	PHE	2.9
1	B	545	ASP	2.8
1	A	526	TYR	2.8
1	A	495	LEU	2.7
1	A	494	GLY	2.7
1	B	544	LEU	2.7
1	A	497	LEU	2.6
1	A	420	GLY	2.5
1	B	469	LEU	2.4
1	A	460	THR	2.4
2	D	691	HIS	2.4
1	B	416	LYS	2.4
1	A	536	LEU	2.4
1	A	540	LEU	2.4
1	B	540	LEU	2.3
1	B	331	TYR	2.2
1	A	474	HIS	2.2
1	B	333	PRO	2.2
1	B	337	PHE	2.2
1	B	307	ALA	2.2
1	A	418	VAL	2.1
1	B	336	PRO	2.0
1	A	417	CYS	2.0
1	B	491	ALA	2.0
1	B	460	THR	2.0

6.2 Non-standard residues in protein, DNA, RNA chains ⓘ

There are no non-standard protein/DNA/RNA residues in this entry.

6.3 Carbohydrates ⓘ

There are no carbohydrates in this entry.

6.4 Ligands ⓘ

In the following table, the Atoms column lists the number of modelled atoms in the group and the number defined in the chemical component dictionary. LLDF column lists the quality of electron density of the group with respect to its neighbouring residues in protein, DNA or RNA chains. The B-factors column lists the minimum, median, 95th percentile and maximum values of B factors

of atoms in the group. The column labelled 'Q< 0.9' lists the number of atoms with occupancy less than 0.9.

Mol	Type	Chain	Res	Atoms	RSCC	RSR	LLDF	B-factors(\AA^2)	Q<0.9
3	5G2	B	601	23/23	0.92	0.20	0.81	53,63,84,86	0
3	5G2	A	601	23/23	0.91	0.15	-0.46	57,61,70,75	0

6.5 Other polymers [i](#)

There are no such residues in this entry.