



Full wwPDB X-ray Structure Validation Report ⓘ

Feb 1, 2016 – 08:15 AM GMT

PDB ID : 3DZL
Title : Crystal structure of PhzA/B from Burkholderia cepacia R18194 in complex with (R)-3-oxocyclohexanecarboxylic acid
Authors : Ahuja, E.G.; Mentel, M.; Graebisch, A.; Breinbauer, R.; Blankenfeldt, W.
Deposited on : 2008-07-30
Resolution : 1.75 Å(reported)

This is a Full wwPDB X-ray Structure Validation Report for a publicly released PDB entry.
We welcome your comments at validation@mail.wwpdb.org
A user guide is available at
<http://wwpdb.org/validation/2016/XrayValidationReportHelp>
with specific help available everywhere you see the ⓘ symbol.

The following versions of software and data (see [references ⓘ](#)) were used in the production of this report:

MolProbity : 4.02b-467
Mogul : 1.7 (RC4), CSD as536be (2015)
Xtriage (Phenix) : 1.9-1692
EDS : rb-20026688
Percentile statistics : 20151230.v01 (using entries in the PDB archive December 30th 2015)
Refmac : 5.8.0135
CCP4 : 6.5.0
Ideal geometry (proteins) : Engh & Huber (2001)
Ideal geometry (DNA, RNA) : Parkinson et al. (1996)
Validation Pipeline (wwPDB-VP) : trunk26865

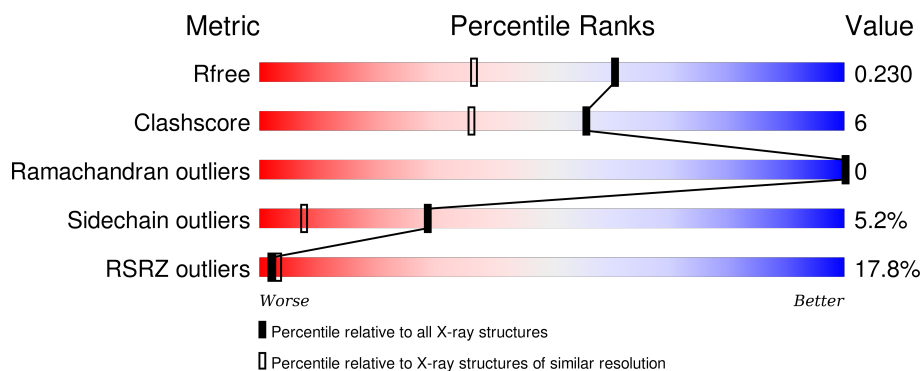
1 Overall quality at a glance

The following experimental techniques were used to determine the structure:

X-RAY DIFFRACTION

The reported resolution of this entry is 1.75 Å.

Percentile scores (ranging between 0-100) for global validation metrics of the entry are shown in the following graphic. The table shows the number of entries on which the scores are based.



Metric	Whole archive (#Entries)	Similar resolution (#Entries, resolution range(Å))
R_{free}	91344	1609 (1.76-1.76)
Clashscore	102246	1730 (1.76-1.76)
Ramachandran outliers	100387	1711 (1.76-1.76)
Sidechain outliers	100360	1711 (1.76-1.76)
RSRZ outliers	91569	1610 (1.76-1.76)

The table below summarises the geometric issues observed across the polymeric chains and their fit to the electron density. The red, orange, yellow and green segments on the lower bar indicate the fraction of residues that contain outliers for ≥ 3 , 2, 1 and 0 types of geometric quality criteria. A grey segment represents the fraction of residues that are not modelled. The numeric value for each fraction is indicated below the corresponding segment, with a dot representing fractions $\leq 5\%$. The upper red bar (where present) indicates the fraction of residues that have poor fit to the electron density. The numeric value is given above the bar.

Mol	Chain	Length	Quality of chain
1	A	185	
1	B	185	

The following table lists non-polymeric compounds, carbohydrate monomers and non-standard residues in protein, DNA, RNA chains that are outliers for geometric or electron-density-fit criteria:

Mol	Type	Chain	Res	Chirality	Geometry	Clashes	Electron density
2	3OC	A	600	-	-	-	X

2 Entry composition

There are 3 unique types of molecules in this entry. The entry contains 3051 atoms, of which 0 are hydrogens and 0 are deuteriums.

In the tables below, the ZeroOcc column contains the number of atoms modelled with zero occupancy, the AltConf column contains the number of residues with at least one atom in alternate conformation and the Trace column contains the number of residues modelled with at most 2 atoms.

- Molecule 1 is a protein called Phenazine biosynthesis protein A/B.

Mol	Chain	Residues	Atoms					ZeroOcc	AltConf	Trace
1	A	157	Total	C	N	O	S	0	6	0
			1331	845	248	233	5			
1	B	158	Total	C	N	O	S	0	4	0
			1333	843	245	240	5			

There are 40 discrepancies between the modelled and reference sequences:

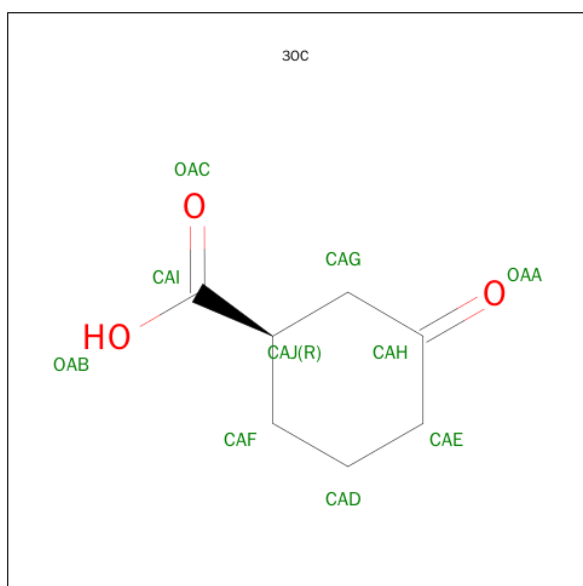
Chain	Residue	Modelled	Actual	Comment	Reference
A	-19	MET	-	EXPRESSION TAG	UNP Q396C9
A	-18	GLY	-	EXPRESSION TAG	UNP Q396C9
A	-17	SER	-	EXPRESSION TAG	UNP Q396C9
A	-16	SER	-	EXPRESSION TAG	UNP Q396C9
A	-15	HIS	-	EXPRESSION TAG	UNP Q396C9
A	-14	HIS	-	EXPRESSION TAG	UNP Q396C9
A	-13	HIS	-	EXPRESSION TAG	UNP Q396C9
A	-12	HIS	-	EXPRESSION TAG	UNP Q396C9
A	-11	HIS	-	EXPRESSION TAG	UNP Q396C9
A	-10	HIS	-	EXPRESSION TAG	UNP Q396C9
A	-9	SER	-	EXPRESSION TAG	UNP Q396C9
A	-8	SER	-	EXPRESSION TAG	UNP Q396C9
A	-7	GLY	-	EXPRESSION TAG	UNP Q396C9
A	-6	LEU	-	EXPRESSION TAG	UNP Q396C9
A	-5	VAL	-	EXPRESSION TAG	UNP Q396C9
A	-4	PRO	-	EXPRESSION TAG	UNP Q396C9
A	-3	ARG	-	EXPRESSION TAG	UNP Q396C9
A	-2	GLY	-	EXPRESSION TAG	UNP Q396C9
A	-1	SER	-	EXPRESSION TAG	UNP Q396C9
A	0	HIS	-	EXPRESSION TAG	UNP Q396C9
B	-19	MET	-	EXPRESSION TAG	UNP Q396C9
B	-18	GLY	-	EXPRESSION TAG	UNP Q396C9
B	-17	SER	-	EXPRESSION TAG	UNP Q396C9
B	-16	SER	-	EXPRESSION TAG	UNP Q396C9
B	-15	HIS	-	EXPRESSION TAG	UNP Q396C9

Continued on next page...

Continued from previous page...

Chain	Residue	Modelled	Actual	Comment	Reference
B	-14	HIS	-	EXPRESSION TAG	UNP Q396C9
B	-13	HIS	-	EXPRESSION TAG	UNP Q396C9
B	-12	HIS	-	EXPRESSION TAG	UNP Q396C9
B	-11	HIS	-	EXPRESSION TAG	UNP Q396C9
B	-10	HIS	-	EXPRESSION TAG	UNP Q396C9
B	-9	SER	-	EXPRESSION TAG	UNP Q396C9
B	-8	SER	-	EXPRESSION TAG	UNP Q396C9
B	-7	GLY	-	EXPRESSION TAG	UNP Q396C9
B	-6	LEU	-	EXPRESSION TAG	UNP Q396C9
B	-5	VAL	-	EXPRESSION TAG	UNP Q396C9
B	-4	PRO	-	EXPRESSION TAG	UNP Q396C9
B	-3	ARG	-	EXPRESSION TAG	UNP Q396C9
B	-2	GLY	-	EXPRESSION TAG	UNP Q396C9
B	-1	SER	-	EXPRESSION TAG	UNP Q396C9
B	0	HIS	-	EXPRESSION TAG	UNP Q396C9

- Molecule 2 is (1R)-3-OXOCYCLOHEXANECARBOXYLIC ACID (three-letter code: 3OC) (formula: C₇H₁₀O₃).



Mol	Chain	Residues	Atoms			ZeroOcc	AltConf
2	A	1	Total	C	O	0	1
			20	14	6		
2	A	1	Total	C	O	0	0
			10	7	3		
2	B	1	Total	C	O	0	0
			10	7	3		

Continued on next page...

Continued from previous page...

Mol	Chain	Residues	Atoms			ZeroOcc	AltConf
2	B	1	Total	C	O	0	0
			10	7	3		

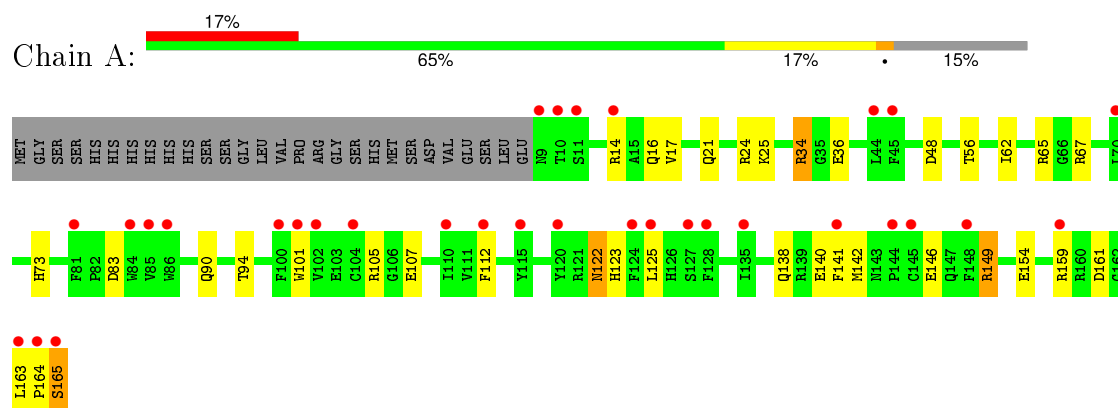
- Molecule 3 is water.

Mol	Chain	Residues	Atoms		ZeroOcc	AltConf
3	A	156	Total	O	0	0
			156	156		
3	B	181	Total	O	0	0
			181	181		

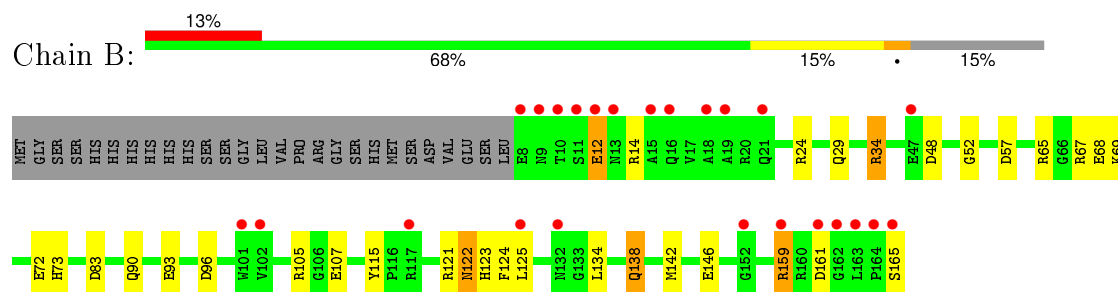
3 Residue-property plots

These plots are drawn for all protein, RNA and DNA chains in the entry. The first graphic for a chain summarises the proportions of errors displayed in the second graphic. The second graphic shows the sequence view annotated by issues in geometry and electron density. Residues are color-coded according to the number of geometric quality criteria for which they contain at least one outlier: green = 0, yellow = 1, orange = 2 and red = 3 or more. A red dot above a residue indicates a poor fit to the electron density ($\text{RSRZ} > 2$). Stretches of 2 or more consecutive residues without any outlier are shown as a green connector. Residues present in the sample, but not in the model, are shown in grey.

- Molecule 1: Phenazine biosynthesis protein A/B



- Molecule 1: Phenazine biosynthesis protein A/B



4 Data and refinement statistics

Property	Value	Source
Space group	P 32 2 1	Depositor
Cell constants a, b, c, α , β , γ	64.74Å 64.74Å 161.03Å 90.00° 90.00° 120.00°	Depositor
Resolution (Å)	19.39 – 1.75 18.94 – 1.75	Depositor EDS
% Data completeness (in resolution range)	99.9 (19.39-1.75) 99.9 (18.94-1.75)	Depositor EDS
R_{merge}	0.05	Depositor
R_{sym}	(Not available)	Depositor
$\langle I/\sigma(I) \rangle$ ¹	3.83 (at 1.75Å)	Xtriage
Refinement program	REFMAC 5.2.0019	Depositor
R, R_{free}	0.158 , 0.193 0.198 , 0.230	Depositor DCC
R_{free} test set	2017 reflections (5.27%)	DCC
Wilson B-factor (Å ²)	26.1	Xtriage
Anisotropy	0.092	Xtriage
Bulk solvent k_{sol} (e/Å ³), B_{sol} (Å ²)	0.33 , 49.2	EDS
Estimated twinning fraction	0.028 for -h,-k,l	Xtriage
L-test for twinning ²	$\langle L \rangle = 0.49$, $\langle L^2 \rangle = 0.32$	Xtriage
Outliers	0 of 40258 reflections	Xtriage
F_o, F_c correlation	0.95	EDS
Total number of atoms	3051	wwPDB-VP
Average B, all atoms (Å ²)	38.0	wwPDB-VP

Xtriage's analysis on translational NCS is as follows: *The largest off-origin peak in the Patterson function is 6.03% of the height of the origin peak. No significant pseudotranslation is detected.*

¹Intensities estimated from amplitudes.

²Theoretical values of $\langle |L| \rangle$, $\langle L^2 \rangle$ for acentric reflections are 0.5, 0.375 respectively for untwinned datasets, and 0.333, 0.2 for perfectly twinned datasets.

5 Model quality [i](#)

5.1 Standard geometry [i](#)

Bond lengths and bond angles in the following residue types are not validated in this section: 3OC

The Z score for a bond length (or angle) is the number of standard deviations the observed value is removed from the expected value. A bond length (or angle) with $|Z| > 5$ is considered an outlier worth inspection. RMSZ is the root-mean-square of all Z scores of the bond lengths (or angles).

Mol	Chain	Bond lengths		Bond angles	
		RMSZ	# Z >5	RMSZ	# Z >5
1	A	1.39	10/1387 (0.7%)	1.24	12/1874 (0.6%)
1	B	1.29	7/1383 (0.5%)	1.18	10/1869 (0.5%)
All	All	1.34	17/2770 (0.6%)	1.21	22/3743 (0.6%)

All (17) bond length outliers are listed below:

Mol	Chain	Res	Type	Atoms	Z	Observed(Å)	Ideal(Å)
1	A	107	GLU	CB-CG	-10.62	1.31	1.52
1	A	140	GLU	CD-OE1	7.65	1.34	1.25
1	B	107[A]	GLU	CG-CD	6.46	1.61	1.51
1	B	107[B]	GLU	CG-CD	6.46	1.61	1.51
1	A	140	GLU	CB-CG	-6.45	1.39	1.52
1	B	72	GLU	CG-CD	6.45	1.61	1.51
1	A	141	PHE	CD2-CE2	6.35	1.51	1.39
1	B	72	GLU	CD-OE1	6.27	1.32	1.25
1	A	34	ARG	CB-CG	-6.10	1.36	1.52
1	A	25	LYS	CE-NZ	5.65	1.63	1.49
1	A	146	GLU	CD-OE1	-5.56	1.19	1.25
1	A	105	ARG	CG-CD	-5.53	1.38	1.51
1	A	146	GLU	CG-CD	5.50	1.60	1.51
1	B	12	GLU	CB-CG	5.44	1.62	1.52
1	A	25	LYS	CD-CE	5.43	1.64	1.51
1	B	115	TYR	CD2-CE2	5.35	1.47	1.39
1	B	34	ARG	CB-CG	-5.08	1.38	1.52

All (22) bond angle outliers are listed below:

Mol	Chain	Res	Type	Atoms	Z	Observed(°)	Ideal(°)
1	A	149	ARG	NE-CZ-NH2	-13.89	113.36	120.30
1	B	24	ARG	NE-CZ-NH2	-7.57	116.51	120.30

Continued on next page...

Continued from previous page...

Mol	Chain	Res	Type	Atoms	Z	Observed(°)	Ideal(°)
1	A	83	ASP	CB-CG-OD1	7.54	125.08	118.30
1	A	146	GLU	OE1-CD-OE2	-6.97	114.94	123.30
1	A	149	ARG	CG-CD-NE	-6.58	97.98	111.80
1	B	14	ARG	NE-CZ-NH1	6.16	123.38	120.30
1	A	24	ARG	NE-CZ-NH2	-6.11	117.25	120.30
1	A	105	ARG	NE-CZ-NH2	-6.10	117.25	120.30
1	B	48	ASP	CB-CG-OD2	6.01	123.71	118.30
1	B	146	GLU	OE1-CD-OE2	-5.76	116.38	123.30
1	A	48	ASP	CB-CG-OD2	5.75	123.47	118.30
1	B	121	ARG	NE-CZ-NH1	5.60	123.10	120.30
1	A	65	ARG	NE-CZ-NH2	-5.55	117.52	120.30
1	A	140	GLU	CG-CD-OE2	-5.34	107.61	118.30
1	B	83	ASP	CB-CG-OD1	5.34	123.10	118.30
1	B	65	ARG	NE-CZ-NH2	-5.29	117.65	120.30
1	B	67	ARG	NE-CZ-NH1	5.29	122.94	120.30
1	A	161	ASP	CB-CG-OD1	5.28	123.05	118.30
1	A	140	GLU	OE1-CD-OE2	5.24	129.58	123.30
1	B	96	ASP	CB-CG-OD2	-5.15	113.67	118.30
1	B	105	ARG	NE-CZ-NH1	5.06	122.83	120.30
1	A	112	PHE	CB-CG-CD2	5.05	124.34	120.80

There are no chirality outliers.

There are no planarity outliers.

5.2 Too-close contacts ⓘ

In the following table, the Non-H and H(model) columns list the number of non-hydrogen atoms and hydrogen atoms in the chain respectively. The H(added) column lists the number of hydrogen atoms added and optimized by MolProbity. The Clashes column lists the number of clashes within the asymmetric unit, whereas Symm-Clashes lists symmetry related clashes.

Mol	Chain	Non-H	H(model)	H(added)	Clashes	Symm-Clashes
1	A	1331	0	1280	20	0
1	B	1333	0	1269	22	1
2	A	30	0	27	1	0
2	B	20	0	18	1	0
3	A	156	0	0	3	1
3	B	181	0	0	7	0
All	All	3051	0	2594	33	1

The all-atom clashscore is defined as the number of clashes found per 1000 atoms (including

hydrogen atoms). The all-atom clashscore for this structure is 6.

All (33) close contacts within the same asymmetric unit are listed below, sorted by their clash magnitude.

Atom-1	Atom-2	Interatomic distance (Å)	Clash overlap (Å)
1:B:73:HIS:HD2	3:B:685:HOH:O	1.54	0.89
1:A:90:GLN:OE1	3:A:748:HOH:O	1.92	0.88
1:A:125[A]:LEU:HD12	1:B:125[A]:LEU:HD12	1.61	0.82
1:B:90:GLN:NE2	3:B:728:HOH:O	2.11	0.78
1:B:73:HIS:CD2	3:B:685:HOH:O	2.34	0.75
1:B:29:GLN:NE2	3:B:763:HOH:O	2.12	0.70
1:B:134:LEU:HD23	3:B:759:HOH:O	1.95	0.67
1:B:68:GLU:OE2	3:B:772:HOH:O	2.17	0.57
1:A:16[B]:GLN:HA	1:A:16[B]:GLN:NE2	2.19	0.57
1:B:12:GLU:OE2	3:B:664:HOH:O	2.18	0.57
1:A:36:GLU:OE1	3:A:650:HOH:O	2.18	0.56
1:B:122:ASN:HD22	1:B:123:HIS:H	1.53	0.56
1:A:122:ASN:HD22	1:A:123:HIS:H	1.55	0.55
1:A:125[A]:LEU:CD1	1:B:125[A]:LEU:HD12	2.35	0.55
1:A:125[A]:LEU:HD12	1:B:125[A]:LEU:CD1	2.34	0.54
1:A:17:VAL:O	1:A:21:GLN:HG3	2.09	0.53
1:A:125[A]:LEU:CD1	1:B:125[A]:LEU:CD1	2.88	0.52
1:A:163:LEU:HD12	1:A:164:PRO:HD2	1.94	0.48
1:A:163:LEU:HD12	1:A:164:PRO:CD	2.43	0.48
1:B:124:PHE:O	1:B:125[B]:LEU:HD22	2.14	0.48
1:A:56:THR:HG21	1:A:62:ILE:HG13	1.95	0.47
1:B:52:GLY:H	1:B:138:GLN:HE22	1.61	0.47
1:A:165:SER:OXT	1:B:69:LYS:HE3	2.15	0.47
1:B:159:ARG:H	1:B:159:ARG:HG2	1.47	0.46
1:A:34:ARG:NH1	3:A:606:HOH:O	2.37	0.46
1:A:149:ARG:NH2	1:B:57:ASP:O	2.44	0.45
1:B:73:HIS:HE1	2:B:600:3OC:HAD	1.82	0.45
1:A:73:HIS:CE1	2:A:600:3OC:HAE	2.52	0.44
1:A:125[A]:LEU:HD13	1:B:125[A]:LEU:HD13	1.98	0.44
1:A:94:THR:HA	1:B:93:GLU:O	2.18	0.43
1:A:16[B]:GLN:CA	1:A:16[B]:GLN:NE2	2.82	0.43
1:A:101:TRP:CH2	1:B:125[B]:LEU:HD11	2.54	0.43
1:B:122:ASN:HB3	1:B:124:PHE:CE1	2.54	0.43

All (1) symmetry-related close contacts are listed below. The label for Atom-2 includes the symmetry operator and encoded unit-cell translations to be applied.

Atom-1	Atom-2	Interatomic distance (Å)	Clash overlap (Å)
1:B:34:ARG:NH1	3:A:649:HOH:O[4_656]	2.12	0.08

5.3 Torsion angles [i](#)

5.3.1 Protein backbone [i](#)

In the following table, the Percentiles column shows the percent Ramachandran outliers of the chain as a percentile score with respect to all X-ray entries followed by that with respect to entries of similar resolution.

The Analysed column shows the number of residues for which the backbone conformation was analysed, and the total number of residues.

Mol	Chain	Analysed	Favoured	Allowed	Outliers	Percentiles	
1	A	161/185 (87%)	158 (98%)	3 (2%)	0	100	100
1	B	160/185 (86%)	158 (99%)	2 (1%)	0	100	100
All	All	321/370 (87%)	316 (98%)	5 (2%)	0	100	100

There are no Ramachandran outliers to report.

5.3.2 Protein sidechains [i](#)

In the following table, the Percentiles column shows the percent sidechain outliers of the chain as a percentile score with respect to all X-ray entries followed by that with respect to entries of similar resolution.

The Analysed column shows the number of residues for which the sidechain conformation was analysed, and the total number of residues.

Mol	Chain	Analysed	Rotameric	Outliers	Percentiles	
1	A	139/161 (86%)	131 (94%)	8 (6%)	25	6
1	B	140/161 (87%)	134 (96%)	6 (4%)	35	12
All	All	279/322 (87%)	265 (95%)	14 (5%)	29	8

All (14) residues with a non-rotameric sidechain are listed below:

Mol	Chain	Res	Type
1	A	14	ARG
1	A	67	ARG
1	A	122	ASN

Continued on next page...

Continued from previous page...

Mol	Chain	Res	Type
1	A	138	GLN
1	A	142	MET
1	A	154	GLU
1	A	159	ARG
1	A	165	SER
1	B	122	ASN
1	B	138	GLN
1	B	142	MET
1	B	159	ARG
1	B	161	ASP
1	B	165	SER

Some sidechains can be flipped to improve hydrogen bonding and reduce clashes. All (6) such sidechains are listed below:

Mol	Chain	Res	Type
1	A	122	ASN
1	A	138	GLN
1	B	29	GLN
1	B	119	GLN
1	B	122	ASN
1	B	138	GLN

5.3.3 RNA [i](#)

There are no RNA molecules in this entry.

5.4 Non-standard residues in protein, DNA, RNA chains [i](#)

There are no non-standard protein/DNA/RNA residues in this entry.

5.5 Carbohydrates [i](#)

There are no carbohydrates in this entry.

5.6 Ligand geometry [i](#)

5 ligands are modelled in this entry.

In the following table, the Counts columns list the number of bonds (or angles) for which Mogul statistics could be retrieved, the number of bonds (or angles) that are observed in the model and the number of bonds (or angles) that are defined in the chemical component dictionary. The Link column lists molecule types, if any, to which the group is linked. The Z score for a bond length (or angle) is the number of standard deviations the observed value is removed from the expected value. A bond length (or angle) with $|Z| > 2$ is considered an outlier worth inspection. RMSZ is the root-mean-square of all Z scores of the bond lengths (or angles).

Mol	Type	Chain	Res	Link	Bond lengths			Bond angles		
					Counts	RMSZ	# $ Z > 2$	Counts	RMSZ	# $ Z > 2$
2	3OC	A	500[A]	-	7,10,10	0.32	0	8,13,13	2.78	4 (50%)
2	3OC	A	500[B]	-	7,10,10	0.50	0	8,13,13	2.32	2 (25%)
2	3OC	A	600	-	7,10,10	2.50	3 (42%)	8,13,13	1.64	2 (25%)
2	3OC	B	500	-	7,10,10	1.84	1 (14%)	8,13,13	1.92	4 (50%)
2	3OC	B	600	-	7,10,10	2.19	4 (57%)	8,13,13	1.33	2 (25%)

In the following table, the Chirals column lists the number of chiral outliers, the number of chiral centers analysed, the number of these observed in the model and the number defined in the chemical component dictionary. Similar counts are reported in the Torsion and Rings columns. '-' means no outliers of that kind were identified.

Mol	Type	Chain	Res	Link	Chirals	Torsions	Rings
2	3OC	A	500[A]	-	-	0/0/14/14	0/1/1/1
2	3OC	A	500[B]	-	-	0/0/14/14	0/1/1/1
2	3OC	A	600	-	-	0/0/14/14	0/1/1/1
2	3OC	B	500	-	-	0/0/14/14	0/1/1/1
2	3OC	B	600	-	-	0/0/14/14	0/1/1/1

All (8) bond length outliers are listed below:

Mol	Chain	Res	Type	Atoms	Z	Observed(Å)	Ideal(Å)
2	B	500	3OC	CAE-CAH	-4.46	1.40	1.50
2	B	600	3OC	CAD-CAE	2.05	1.58	1.52
2	B	600	3OC	OAA-CAH	2.19	1.25	1.21
2	B	600	3OC	CAE-CAH	3.02	1.56	1.50
2	A	600	3OC	CAE-CAH	3.15	1.57	1.50
2	B	600	3OC	CAG-CAJ	3.34	1.61	1.52
2	A	600	3OC	OAA-CAH	3.39	1.27	1.21
2	A	600	3OC	CAG-CAH	3.78	1.57	1.50

All (14) bond angle outliers are listed below:

Mol	Chain	Res	Type	Atoms	Z	Observed($^{\circ}$)	Ideal($^{\circ}$)
2	A	500[A]	3OC	OAA-CAH-CAG	-4.85	115.83	121.98
2	A	500[B]	3OC	OAA-CAH-CAG	-4.01	116.89	121.98
2	A	600	3OC	CAJ-CAG-CAH	-3.18	105.93	111.95
2	B	500	3OC	OAA-CAH-CAE	-2.81	116.78	122.02
2	B	500	3OC	CAD-CAF-CAJ	-2.46	106.59	111.61
2	A	600	3OC	CAE-CAH-CAG	-2.45	112.52	115.89
2	B	600	3OC	CAJ-CAG-CAH	-2.31	107.59	111.95
2	B	600	3OC	CAD-CAE-CAH	-2.19	105.02	111.77
2	A	500[A]	3OC	CAF-CAJ-CAI	-2.09	107.05	112.01
2	A	500[A]	3OC	CAJ-CAG-CAH	2.02	115.76	111.95
2	B	500	3OC	CAF-CAJ-CAI	2.22	117.29	112.01
2	B	500	3OC	CAE-CAH-CAG	2.39	119.19	115.89
2	A	500[B]	3OC	CAE-CAH-CAG	4.78	122.47	115.89
2	A	500[A]	3OC	CAE-CAH-CAG	5.29	123.18	115.89

There are no chirality outliers.

There are no torsion outliers.

There are no ring outliers.

2 monomers are involved in 2 short contacts:

Mol	Chain	Res	Type	Clashes	Symm-Clashes
2	A	600	3OC	1	0
2	B	600	3OC	1	0

5.7 Other polymers [i](#)

There are no such residues in this entry.






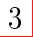
5.8 Polymer linkage issues [i](#)

There are no chain breaks in this entry.

6 Fit of model and data

6.1 Protein, DNA and RNA chains

In the following table, the column labelled ‘#RSRZ> 2’ contains the number (and percentage) of RSRZ outliers, followed by percent RSRZ outliers for the chain as percentile scores relative to all X-ray entries and entries of similar resolution. The OWAB column contains the minimum, median, 95th percentile and maximum values of the occupancy-weighted average B-factor per residue. The column labelled ‘Q< 0.9’ lists the number of (and percentage) of residues with an average occupancy less than 0.9.

Mol	Chain	Analysed	<RSRZ>	#RSRZ>2	OWAB(Å ²)	Q<0.9
1	A	157/185 (84%)	1.18	32 (20%)  	26, 34, 55, 70	0
1	B	158/185 (85%)	0.82	24 (15%)  	29, 34, 50, 79	0
All	All	315/370 (85%)	1.00	56 (17%)  	26, 34, 52, 79	0

All (56) RSRZ outliers are listed below:

Mol	Chain	Res	Type	RSRZ
1	B	165	SER	10.8
1	A	165	SER	6.8
1	A	10	THR	6.4
1	B	164	PRO	5.7
1	B	9	ASN	4.9
1	A	164	PRO	4.9
1	A	9	ASN	4.7
1	B	15	ALA	4.5
1	B	163	LEU	4.4
1	B	8	GLU	4.1
1	A	128	PHE	4.1
1	A	11	SER	3.9
1	B	13	ASN	3.7
1	B	16	GLN	3.7
1	B	10	THR	3.7
1	B	12	GLU	3.6
1	B	161	ASP	3.5
1	A	125[A]	LEU	3.4
1	B	11	SER	3.4
1	A	81	PHE	3.1
1	A	86	TRP	3.1
1	A	112	PHE	3.1
1	B	162	GLY	3.1
1	B	132	ASN	3.1

Continued on next page...

Continued from previous page...

Mol	Chain	Res	Type	RSRZ
1	A	14	ARG	3.1
1	A	100	PHE	3.0
1	B	101	TRP	3.0
1	A	101	TRP	2.9
1	B	159	ARG	2.9
1	A	145	CYS	2.9
1	A	120	TYR	2.8
1	A	102	VAL	2.8
1	B	125[A]	LEU	2.7
1	B	47	GLU	2.7
1	A	141	PHE	2.6
1	A	144	PRO	2.6
1	A	84	TRP	2.6
1	A	127	SER	2.5
1	A	110	ILE	2.5
1	B	21	GLN	2.5
1	A	148	PHE	2.5
1	A	163	LEU	2.4
1	A	104	CYS	2.4
1	A	45	PHE	2.4
1	A	115	TYR	2.4
1	B	18	ALA	2.4
1	B	152	GLY	2.4
1	B	19	ALA	2.3
1	B	117	ARG	2.2
1	A	135	ILE	2.1
1	A	159	ARG	2.1
1	A	85	VAL	2.1
1	A	124	PHE	2.1
1	B	102	VAL	2.0
1	A	44	LEU	2.0
1	A	70	LEU	2.0

6.2 Non-standard residues in protein, DNA, RNA chains ⓘ

There are no non-standard protein/DNA/RNA residues in this entry.

6.3 Carbohydrates ⓘ

There are no carbohydrates in this entry.

6.4 Ligands [i](#)

In the following table, the Atoms column lists the number of modelled atoms in the group and the number defined in the chemical component dictionary. LLDF column lists the quality of electron density of the group with respect to its neighbouring residues in protein, DNA or RNA chains. The B-factors column lists the minimum, median, 95th percentile and maximum values of B factors of atoms in the group. The column labelled 'Q< 0.9' lists the number of atoms with occupancy less than 0.9.

Mol	Type	Chain	Res	Atoms	RSCC	RSR	LLDF	B-factors(Å ²)	Q<0.9
2	3OC	A	600	10/10	0.79	0.28	2.68	52,57,61,65	0
2	3OC	B	500	10/10	0.87	0.12	1.38	35,38,43,45	0
2	3OC	B	600	10/10	0.87	0.14	0.99	45,51,57,58	0
2	3OC	A	500[B]	10/10	0.86	0.15	-0.45	27,32,34,36	10
2	3OC	A	500[A]	10/10	0.86	0.15	-0.45	46,56,56,57	10

6.5 Other polymers [i](#)

There are no such residues in this entry.