



# Full wwPDB X-ray Structure Validation Report ⓘ

Feb 1, 2016 – 03:59 PM GMT

PDB ID : 4E1T  
Title : X-ray crystal structure of the transmembrane beta-domain from invasin from *Yersinia pseudotuberculosis*  
Authors : Fairman, J.W.; Dautin, N.; Wojtowicz, D.; Wei, L.; Noinaj, N.; Barnard, T.J.; Udho, E.; Finkelstein, A.; Przytycka, T.M.; Cherezov, V.; Buchanan, S.K.  
Deposited on : 2012-03-07  
Resolution : 2.26 Å(reported)

This is a Full wwPDB X-ray Structure Validation Report for a publicly released PDB entry.  
We welcome your comments at [validation@mail.wwpdb.org](mailto:validation@mail.wwpdb.org)  
A user guide is available at  
<http://wwpdb.org/validation/2016/XrayValidationReportHelp>  
with specific help available everywhere you see the ⓘ symbol.

---

The following versions of software and data (see [references ⓘ](#)) were used in the production of this report:

MolProbity : 4.02b-467  
Mogul : 1.7 (RC4), CSD as536be (2015)  
Xtriage (Phenix) : 1.9-1692  
EDS : rb-20026688  
Percentile statistics : 20151230.v01 (using entries in the PDB archive December 30th 2015)  
Refmac : 5.8.0135  
CCP4 : 6.5.0  
Ideal geometry (proteins) : Engh & Huber (2001)  
Ideal geometry (DNA, RNA) : Parkinson et al. (1996)  
Validation Pipeline (wwPDB-VP) : trunk26865

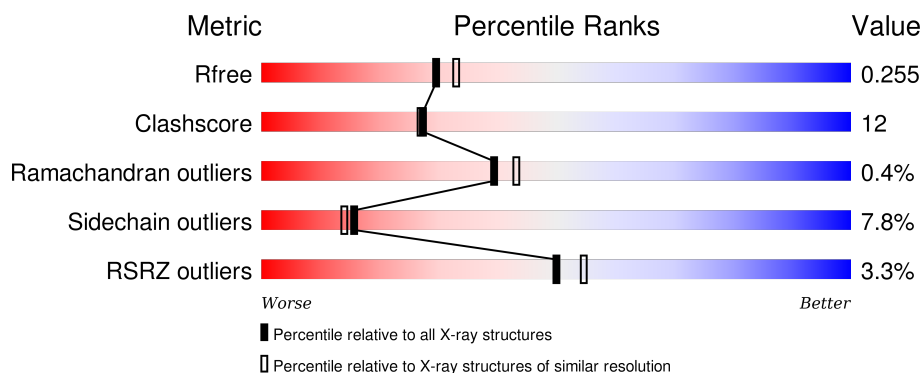
# 1 Overall quality at a glance

The following experimental techniques were used to determine the structure:

## *X-RAY DIFFRACTION*

The reported resolution of this entry is 2.26 Å.

Percentile scores (ranging between 0-100) for global validation metrics of the entry are shown in the following graphic. The table shows the number of entries on which the scores are based.



Metric	Whole archive (#Entries)	Similar resolution (#Entries, resolution range(Å))
$R_{free}$	91344	1640 (2.28-2.24)
Clashscore	102246	1095 (2.26-2.26)
Ramachandran outliers	100387	1063 (2.26-2.26)
Sidechain outliers	100360	1063 (2.26-2.26)
RSRZ outliers	91569	1647 (2.28-2.24)

The table below summarises the geometric issues observed across the polymeric chains and their fit to the electron density. The red, orange, yellow and green segments on the lower bar indicate the fraction of residues that contain outliers for  $\geq 3$ , 2, 1 and 0 types of geometric quality criteria. A grey segment represents the fraction of residues that are not modelled. The numeric value for each fraction is indicated below the corresponding segment, with a dot representing fractions  $\leq 5\%$ . The upper red bar (where present) indicates the fraction of residues that have poor fit to the electron density. The numeric value is given above the bar.

Mol	Chain	Length	Quality of chain
1	A	245	<div> <div>3%</div> <div>75%</div> <div>22%</div> <div>..</div> </div>

The following table lists non-polymeric compounds, carbohydrate monomers and non-standard residues in protein, DNA, RNA chains that are outliers for geometric or electron-density-fit criteria:

Mol	Type	Chain	Res	Chirality	Geometry	Clashes	Electron density
2	OLC	A	401	-	-	-	X

*Continued on next page...*

*Continued from previous page...*

Mol	Type	Chain	Res	Chirality	Geometry	Clashes	Electron density
2	OLC	A	403	-	-	-	X
2	OLC	A	404	-	-	-	X
2	OLC	A	406	-	-	-	X
2	OLC	A	407	-	-	-	X
2	OLC	A	408	-	-	-	X
2	OLC	A	410	-	-	-	X
2	OLC	A	411	-	-	-	X
2	OLC	A	412	-	-	-	X
2	OLC	A	413	-	-	-	X
3	OLB	A	405	-	-	-	X

## 2 Entry composition [i](#)

There are 4 unique types of molecules in this entry. The entry contains 2360 atoms, of which 0 are hydrogens and 0 are deuteriums.

In the tables below, the ZeroOcc column contains the number of atoms modelled with zero occupancy, the AltConf column contains the number of residues with at least one atom in alternate conformation and the Trace column contains the number of residues modelled with at most 2 atoms.

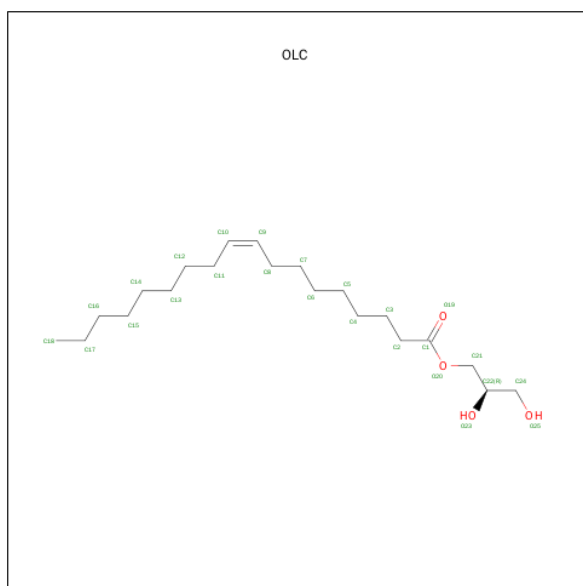
- Molecule 1 is a protein called Invasin.

Mol	Chain	Residues	Atoms					ZeroOcc	AltConf	Trace
1	A	245	Total	C	N	O	S	0	0	0
			1960	1240	346	370	4			

There are 2 discrepancies between the modelled and reference sequences:

Chain	Residue	Modelled	Actual	Comment	Reference
A	146	MET	-	INITIATING METHIONINE	UNP P11922
A	352	PHE	LEU	ENGINEERED MUTATION	UNP P11922

- Molecule 2 is (2R)-2,3-DIHYDROXYPROPYL (9Z)-OCTADEC-9-ENOATE (three-letter code: OLC) (formula: C<sub>21</sub>H<sub>40</sub>O<sub>4</sub>).



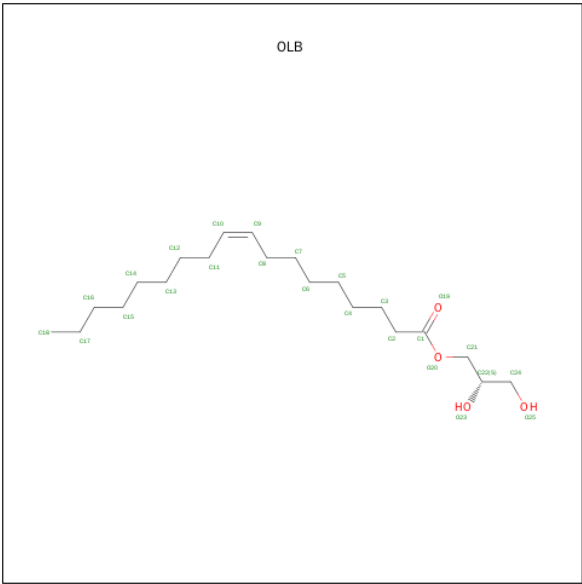
Mol	Chain	Residues	Atoms			ZeroOcc	AltConf
2	A	1	Total	C	O	0	0
			25	21	4		
2	A	1	Total	C	O	0	0
			19	15	4		

*Continued on next page...*

Continued from previous page...

Mol	Chain	Residues	Atoms	ZeroOcc	AltConf
2	A	1	Total C O 25 21 4	0	0
2	A	1	Total C O 25 21 4	0	0
2	A	1	Total C O 25 21 4	0	0
2	A	1	Total C 17 17	0	0
2	A	1	Total C O 25 21 4	0	0
2	A	1	Total C O 25 21 4	0	0
2	A	1	Total C O 25 21 4	0	0
2	A	1	Total C O 25 21 4	0	0
2	A	1	Total C 14 14	0	0
2	A	1	Total C O 8 4 4	0	0

- Molecule 3 is (2S)-2,3-DIHYDROXYPROPYL (9Z)-OCTADEC-9-ENOATE (three-letter code: OLB) (formula: C<sub>21</sub>H<sub>40</sub>O<sub>4</sub>).



Mol	Chain	Residues	Atoms	ZeroOcc	AltConf
3	A	1	Total C O 25 21 4	0	0

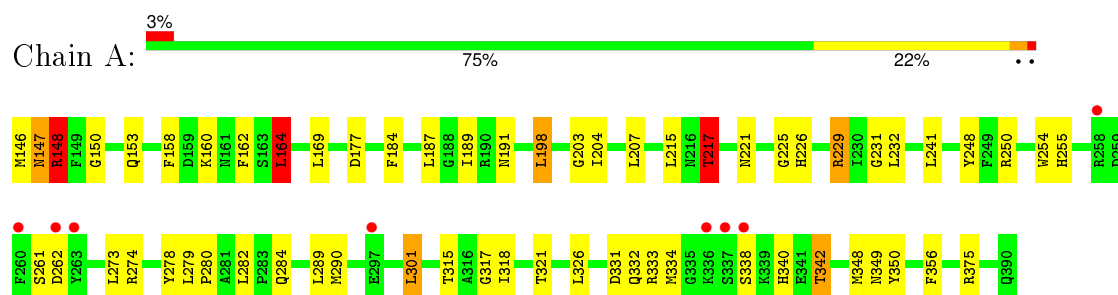
- Molecule 4 is water.

Mol	Chain	Residues	Atoms		ZeroOcc	AltConf
4	A	117	Total 117	O 117	0	0

### 3 Residue-property plots

These plots are drawn for all protein, RNA and DNA chains in the entry. The first graphic for a chain summarises the proportions of errors displayed in the second graphic. The second graphic shows the sequence view annotated by issues in geometry and electron density. Residues are color-coded according to the number of geometric quality criteria for which they contain at least one outlier: green = 0, yellow = 1, orange = 2 and red = 3 or more. A red dot above a residue indicates a poor fit to the electron density ( $\text{RSRZ} > 2$ ). Stretches of 2 or more consecutive residues without any outlier are shown as a green connector. Residues present in the sample, but not in the model, are shown in grey.

• Molecule 1: Invasin



## 4 Data and refinement statistics

Property	Value	Source
Space group	C 2 2 21	Depositor
Cell constants a, b, c, $\alpha$ , $\beta$ , $\gamma$	79.40 Å 124.89 Å 65.07 Å 90.00° 90.00° 90.00°	Depositor
Resolution (Å)	29.79 – 2.26 29.79 – 2.26	Depositor EDS
% Data completeness (in resolution range)	90.5 (29.79-2.26) 90.6 (29.79-2.26)	Depositor EDS
$R_{merge}$	0.13	Depositor
$R_{sym}$	(Not available)	Depositor
$\langle I/\sigma(I) \rangle$ <sup>1</sup>	1.46 (at 2.26 Å)	Xtriage
Refinement program	REFMAC 5.5.0109	Depositor
R, $R_{free}$	0.188 , 0.260 0.196 , 0.255	Depositor DCC
$R_{free}$ test set	713 reflections (5.36%)	DCC
Wilson B-factor (Å <sup>2</sup> )	48.0	Xtriage
Anisotropy	0.369	Xtriage
Bulk solvent $k_{sol}$ (e/Å <sup>3</sup> ), $B_{sol}$ (Å <sup>2</sup> )	0.32 , 41.2	EDS
Estimated twinning fraction	No twinning to report.	Xtriage
L-test for twinning <sup>2</sup>	$\langle  L  \rangle = 0.49$ , $\langle L^2 \rangle = 0.32$	Xtriage
Outliers	0 of 14091 reflections	Xtriage
$F_o, F_c$ correlation	0.95	EDS
Total number of atoms	2360	wwPDB-VP
Average B, all atoms (Å <sup>2</sup> )	50.0	wwPDB-VP

Xtriage's analysis on translational NCS is as follows: *The largest off-origin peak in the Patterson function is 9.16% of the height of the origin peak. No significant pseudotranslation is detected.*

<sup>1</sup>Intensities estimated from amplitudes.

<sup>2</sup>Theoretical values of  $\langle |L| \rangle$ ,  $\langle L^2 \rangle$  for acentric reflections are 0.5, 0.375 respectively for untwinned datasets, and 0.333, 0.2 for perfectly twinned datasets.



## 5 Model quality [i](#)

### 5.1 Standard geometry [i](#)

Bond lengths and bond angles in the following residue types are not validated in this section: OLB, OLC

The Z score for a bond length (or angle) is the number of standard deviations the observed value is removed from the expected value. A bond length (or angle) with  $|Z| > 5$  is considered an outlier worth inspection. RMSZ is the root-mean-square of all Z scores of the bond lengths (or angles).

Mol	Chain	Bond lengths		Bond angles	
		RMSZ	$\# Z  > 5$	RMSZ	$\# Z  > 5$
1	A	0.88	0/2009	0.90	6/2727 (0.2%)

There are no bond length outliers.

All (6) bond angle outliers are listed below:

Mol	Chain	Res	Type	Atoms	Z	Observed( $^{\circ}$ )	Ideal( $^{\circ}$ )
1	A	148	ARG	NE-CZ-NH1	-6.38	117.11	120.30
1	A	207	LEU	CA-CB-CG	6.34	129.88	115.30
1	A	217	THR	CB-CA-C	-5.90	95.67	111.60
1	A	164	LEU	CA-CB-CG	5.84	128.74	115.30
1	A	229	ARG	NE-CZ-NH2	-5.32	117.64	120.30
1	A	148	ARG	NE-CZ-NH2	5.13	122.86	120.30

There are no chirality outliers.

There are no planarity outliers.

### 5.2 Too-close contacts [i](#)

In the following table, the Non-H and H(model) columns list the number of non-hydrogen atoms and hydrogen atoms in the chain respectively. The H(added) column lists the number of hydrogen atoms added and optimized by MolProbity. The Clashes column lists the number of clashes within the asymmetric unit, whereas Symm-Clashes lists symmetry related clashes.

Mol	Chain	Non-H	H(model)	H(added)	Clashes	Symm-Clashes
1	A	1960	0	1862	42	0
2	A	258	0	402	24	0
3	A	25	0	40	1	0
4	A	117	0	0	3	0
All	All	2360	0	2304	54	0

The all-atom clashscore is defined as the number of clashes found per 1000 atoms (including hydrogen atoms). The all-atom clashscore for this structure is 12.

All (54) close contacts within the same asymmetric unit are listed below, sorted by their clash magnitude.

Atom-1	Atom-2	Interatomic distance (Å)	Clash overlap (Å)
1:A:254:TRP:HE1	2:A:411:OLC:H24	1.43	0.84
1:A:177:ASP:OD2	1:A:375:ARG:NH2	2.11	0.83
1:A:146:MET:HG2	1:A:147:ASN:N	1.96	0.81
1:A:332:GLN:HG3	2:A:407:OLC:C1	2.14	0.78
1:A:160:LYS:HG3	4:A:541:HOH:O	1.83	0.77
1:A:318:ILE:HD11	2:A:407:OLC:H6	1.70	0.74
1:A:301:LEU:HD22	1:A:333:ARG:HH12	1.52	0.73
1:A:146:MET:HG2	1:A:147:ASN:H	1.51	0.73
2:A:408:OLC:H7	2:A:408:OLC:H3A	1.72	0.72
1:A:146:MET:CG	1:A:147:ASN:N	2.53	0.71
1:A:340:HIS:HE1	1:A:342:THR:HG22	1.58	0.67
1:A:226:HIS:ND1	2:A:401:OLC:H21A	2.13	0.63
1:A:229:ARG:HD2	1:A:248:TYR:HB3	1.80	0.61
1:A:356:PHE:HB2	2:A:408:OLC:H24A	1.83	0.59
1:A:340:HIS:CE1	1:A:342:THR:HG22	2.38	0.57
1:A:189:ILE:HG22	1:A:198:LEU:HD23	1.86	0.57
1:A:261:SER:O	1:A:262:ASP:HB2	2.05	0.57
1:A:148:ARG:NH1	1:A:150:GLY:O	2.36	0.57
1:A:274:ARG:HG2	1:A:290:MET:HE3	1.87	0.56
1:A:164:LEU:HD13	2:A:410:OLC:H24	1.88	0.54
1:A:215:LEU:HG	3:A:405:OLB:H2A	1.89	0.54
1:A:217:THR:HG23	1:A:232:LEU:HD23	1.92	0.52
1:A:191:ASN:OD1	2:A:410:OLC:H22	2.09	0.52
1:A:350:TYR:HB2	2:A:408:OLC:H11	1.92	0.52
2:A:410:OLC:H2	2:A:413:OLC:C1	2.40	0.52
1:A:225:GLY:O	1:A:255:HIS:HE1	1.93	0.51
2:A:401:OLC:H7A	4:A:524:HOH:O	2.11	0.51
1:A:217:THR:HG22	1:A:231:GLY:O	2.12	0.50
1:A:169:LEU:C	1:A:169:LEU:HD13	2.32	0.50
1:A:221:ASN:HD21	2:A:401:OLC:H3A	1.77	0.50
2:A:408:OLC:H7	2:A:408:OLC:C3	2.39	0.49
2:A:401:OLC:H10	2:A:404:OLC:H12A	1.94	0.49
1:A:158:PHE:HB3	1:A:162:PHE:HA	1.94	0.49
1:A:317:GLY:HA3	1:A:331:ASP:OD1	2.13	0.49
1:A:153:GLN:HG3	1:A:349:ASN:OD1	2.13	0.49
2:A:408:OLC:C7	2:A:408:OLC:H3A	2.41	0.48
1:A:301:LEU:HD22	1:A:333:ARG:NH1	2.25	0.48

*Continued on next page...*

Continued from previous page...

Atom-1	Atom-2	Interatomic distance (Å)	Clash overlap (Å)
1:A:187:LEU:HD12	2:A:409:OLC:H7A	1.97	0.47
1:A:301:LEU:CD2	1:A:333:ARG:HH12	2.27	0.46
1:A:250:ARG:HD3	4:A:522:HOH:O	2.16	0.46
1:A:225:GLY:O	1:A:255:HIS:CE1	2.69	0.46
1:A:321:THR:HG23	1:A:326:LEU:O	2.17	0.45
2:A:404:OLC:O19	2:A:409:OLC:H2	2.18	0.44
1:A:232:LEU:HD21	2:A:402:OLC:H6	1.98	0.44
1:A:318:ILE:HD11	2:A:407:OLC:C6	2.45	0.42
2:A:410:OLC:H2	2:A:413:OLC:O19	2.19	0.42
2:A:409:OLC:H8	2:A:409:OLC:H11A	1.69	0.42
1:A:278:TYR:O	1:A:280:PRO:HD3	2.20	0.41
2:A:402:OLC:H21	2:A:411:OLC:H12A	2.02	0.41
2:A:408:OLC:H13A	2:A:408:OLC:H10	1.60	0.41
1:A:184:PHE:CZ	1:A:203:GLY:HA3	2.56	0.41
1:A:160:LYS:HG2	1:A:342:THR:HG23	2.02	0.41
2:A:411:OLC:H13	2:A:411:OLC:H10	1.71	0.41
1:A:315:THR:OG1	1:A:333:ARG:HG3	2.20	0.41

There are no symmetry-related clashes.

## 5.3 Torsion angles ⓘ

### 5.3.1 Protein backbone ⓘ

In the following table, the Percentiles column shows the percent Ramachandran outliers of the chain as a percentile score with respect to all X-ray entries followed by that with respect to entries of similar resolution.

The Analysed column shows the number of residues for which the backbone conformation was analysed, and the total number of residues.

Mol	Chain	Analysed	Favoured	Allowed	Outliers	Percentiles	
1	A	243/245 (99%)	236 (97%)	6 (2%)	1 (0%)	39	43

All (1) Ramachandran outliers are listed below:

Mol	Chain	Res	Type
1	A	147	ASN

### 5.3.2 Protein sidechains ⓘ

In the following table, the Percentiles column shows the percent sidechain outliers of the chain as a percentile score with respect to all X-ray entries followed by that with respect to entries of similar resolution.

The Analysed column shows the number of residues for which the sidechain conformation was analysed, and the total number of residues.

Mol	Chain	Analysed	Rotameric	Outliers	Percentiles	
1	A	204/206 (99%)	188 (92%)	16 (8%)	16	14

All (16) residues with a non-rotameric sidechain are listed below:

Mol	Chain	Res	Type
1	A	148	ARG
1	A	164	LEU
1	A	198	LEU
1	A	204	ILE
1	A	217	THR
1	A	241	LEU
1	A	273	LEU
1	A	279	LEU
1	A	282	LEU
1	A	284	GLN
1	A	289	LEU
1	A	301	LEU
1	A	334	MET
1	A	338	SER
1	A	342	THR
1	A	348	MET

Some sidechains can be flipped to improve hydrogen bonding and reduce clashes. There are no such sidechains identified.

### 5.3.3 RNA ⓘ

There are no RNA molecules in this entry.

## 5.4 Non-standard residues in protein, DNA, RNA chains ⓘ

There are no non-standard protein/DNA/RNA residues in this entry.

## 5.5 Carbohydrates [i](#)

There are no carbohydrates in this entry.

## 5.6 Ligand geometry [i](#)

13 ligands are modelled in this entry.

In the following table, the Counts columns list the number of bonds (or angles) for which Mogul statistics could be retrieved, the number of bonds (or angles) that are observed in the model and the number of bonds (or angles) that are defined in the chemical component dictionary. The Link column lists molecule types, if any, to which the group is linked. The Z score for a bond length (or angle) is the number of standard deviations the observed value is removed from the expected value. A bond length (or angle) with  $|Z| > 2$  is considered an outlier worth inspection. RMSZ is the root-mean-square of all Z scores of the bond lengths (or angles).

Mol	Type	Chain	Res	Link	Bond lengths			Bond angles		
					Counts	RMSZ	# $ Z  > 2$	Counts	RMSZ	# $ Z  > 2$
2	OLC	A	401	-	24,24,24	1.32	1 (4%)	25,25,25	1.14	2 (8%)
2	OLC	A	402	-	18,18,24	1.19	1 (5%)	19,19,25	1.02	1 (5%)
2	OLC	A	403	-	24,24,24	0.97	1 (4%)	25,25,25	0.97	2 (8%)
2	OLC	A	404	-	24,24,24	1.18	1 (4%)	25,25,25	1.15	2 (8%)
3	OLB	A	405	-	24,24,24	1.13	1 (4%)	25,25,25	1.14	2 (8%)
2	OLC	A	406	-	24,24,24	1.10	1 (4%)	25,25,25	0.79	2 (8%)
2	OLC	A	407	-	16,16,24	0.32	0	15,15,25	0.58	0
2	OLC	A	408	-	24,24,24	1.01	1 (4%)	25,25,25	0.84	0
2	OLC	A	409	-	24,24,24	1.01	1 (4%)	25,25,25	1.03	1 (4%)
2	OLC	A	410	-	24,24,24	1.14	1 (4%)	25,25,25	1.23	3 (12%)
2	OLC	A	411	-	24,24,24	0.90	1 (4%)	25,25,25	0.89	1 (4%)
2	OLC	A	412	-	13,13,24	0.45	0	11,12,25	0.59	0
2	OLC	A	413	-	7,7,24	1.95	1 (14%)	6,7,25	1.22	0

In the following table, the Chirals column lists the number of chiral outliers, the number of chiral centers analysed, the number of these observed in the model and the number defined in the chemical component dictionary. Similar counts are reported in the Torsion and Rings columns. '-' means no outliers of that kind were identified.

Mol	Type	Chain	Res	Link	Chirals	Torsions	Rings
2	OLC	A	401	-	-	0/24/24/24	0/0/0/0
2	OLC	A	402	-	-	0/18/18/24	0/0/0/0
2	OLC	A	403	-	-	0/24/24/24	0/0/0/0
2	OLC	A	404	-	-	0/24/24/24	0/0/0/0

*Continued on next page...*

*Continued from previous page...*

Mol	Type	Chain	Res	Link	Chirals	Torsions	Rings
3	OLB	A	405	-	-	0/24/24/24	0/0/0/0
2	OLC	A	406	-	-	0/24/24/24	0/0/0/0
2	OLC	A	407	-	-	0/14/14/24	0/0/0/0
2	OLC	A	408	-	-	0/24/24/24	0/0/0/0
2	OLC	A	409	-	-	0/24/24/24	0/0/0/0
2	OLC	A	410	-	-	0/24/24/24	0/0/0/0
2	OLC	A	411	-	-	0/24/24/24	0/0/0/0
2	OLC	A	412	-	-	0/11/11/24	0/0/0/0
2	OLC	A	413	-	-	0/6/6/24	0/0/0/0

All (11) bond length outliers are listed below:

Mol	Chain	Res	Type	Atoms	Z	Observed(Å)	Ideal(Å)
2	A	411	OLC	O20-C1	4.17	1.45	1.33
2	A	403	OLC	O20-C1	4.19	1.45	1.33
2	A	408	OLC	O20-C1	4.37	1.46	1.33
2	A	409	OLC	O20-C1	4.56	1.47	1.33
2	A	402	OLC	O20-C1	4.77	1.47	1.33
2	A	406	OLC	O20-C1	4.79	1.47	1.33
2	A	413	OLC	O20-C1	4.91	1.47	1.32
2	A	410	OLC	O20-C1	5.07	1.48	1.33
3	A	405	OLB	O20-C1	5.09	1.48	1.33
2	A	404	OLC	O20-C1	5.35	1.49	1.33
2	A	401	OLC	O20-C1	6.08	1.51	1.33

All (16) bond angle outliers are listed below:

Mol	Chain	Res	Type	Atoms	Z	Observed(°)	Ideal(°)
2	A	403	OLC	O20-C1-O19	-2.49	117.07	123.49
2	A	410	OLC	O20-C1-O19	-2.46	117.14	123.49
2	A	406	OLC	O20-C1-O19	-2.01	118.32	123.49
2	A	404	OLC	O20-C21-C22	2.03	117.21	106.10
2	A	406	OLC	O20-C1-C2	2.21	118.62	111.90
3	A	405	OLB	O20-C21-C22	2.23	118.31	106.10
2	A	401	OLC	O20-C1-C2	2.47	119.43	111.90
2	A	411	OLC	O20-C1-C2	2.69	120.11	111.90
2	A	401	OLC	C21-O20-C1	2.82	124.73	116.85
2	A	402	OLC	O20-C1-C2	3.06	121.23	111.90
2	A	410	OLC	C21-O20-C1	3.11	125.54	116.85
2	A	409	OLC	O20-C1-C2	3.30	121.95	111.90
2	A	410	OLC	O20-C1-C2	3.40	122.27	111.90
2	A	403	OLC	O20-C1-C2	3.48	122.52	111.90

*Continued on next page...*

*Continued from previous page...*

Mol	Chain	Res	Type	Atoms	Z	Observed(°)	Ideal(°)
3	A	405	OLB	O20-C1-C2	3.97	123.99	111.90
2	A	404	OLC	O20-C1-C2	4.14	124.52	111.90

There are no chirality outliers.

There are no torsion outliers.

There are no ring outliers.

10 monomers are involved in 25 short contacts:

Mol	Chain	Res	Type	Clashes	Symm-Clashes
2	A	401	OLC	4	0
2	A	402	OLC	2	0
2	A	404	OLC	2	0
3	A	405	OLB	1	0
2	A	407	OLC	3	0
2	A	408	OLC	6	0
2	A	409	OLC	3	0
2	A	410	OLC	4	0
2	A	411	OLC	3	0
2	A	413	OLC	2	0

## 5.7 Other polymers [i](#)

There are no such residues in this entry.

## 5.8 Polymer linkage issues [i](#)

There are no chain breaks in this entry.

## 6 Fit of model and data [i](#)

### 6.1 Protein, DNA and RNA chains [i](#)

In the following table, the column labelled ‘#RSRZ> 2’ contains the number (and percentage) of RSRZ outliers, followed by percent RSRZ outliers for the chain as percentile scores relative to all X-ray entries and entries of similar resolution. The OWAB column contains the minimum, median, 95<sup>th</sup> percentile and maximum values of the occupancy-weighted average B-factor per residue. The column labelled ‘Q< 0.9’ lists the number of (and percentage) of residues with an average occupancy less than 0.9.

Mol	Chain	Analysed	<RSRZ>	#RSRZ>2	OWAB(Å <sup>2</sup> )	Q<0.9
1	A	245/245 (100%)	-0.10	8 (3%) 50 55	30, 45, 63, 84	0

All (8) RSRZ outliers are listed below:

Mol	Chain	Res	Type	RSRZ
1	A	297	GLU	2.8
1	A	260	PHE	2.5
1	A	258	ARG	2.5
1	A	338	SER	2.4
1	A	262	ASP	2.3
1	A	336	LYS	2.3
1	A	263	TYR	2.2
1	A	337	SER	2.0

### 6.2 Non-standard residues in protein, DNA, RNA chains [i](#)

There are no non-standard protein/DNA/RNA residues in this entry.

### 6.3 Carbohydrates [i](#)

There are no carbohydrates in this entry.

### 6.4 Ligands [i](#)

In the following table, the Atoms column lists the number of modelled atoms in the group and the number defined in the chemical component dictionary. LLDF column lists the quality of electron density of the group with respect to its neighbouring residues in protein, DNA or RNA chains. The B-factors column lists the minimum, median, 95<sup>th</sup> percentile and maximum values of B factors of atoms in the group. The column labelled ‘Q< 0.9’ lists the number of atoms with occupancy less than 0.9.



Mol	Type	Chain	Res	Atoms	RSCC	RSR	LLDF	B-factors( $\text{\AA}^2$ )	Q<0.9
2	OLC	A	403	25/25	0.72	0.28	9.10	79,86,95,96	0
2	OLC	A	412	14/25	0.73	0.25	6.02	57,60,67,68	0
3	OLB	A	405	25/25	0.77	0.25	4.55	68,74,76,77	0
2	OLC	A	408	25/25	0.71	0.23	4.52	63,74,78,78	0
2	OLC	A	410	25/25	0.65	0.28	4.38	63,78,81,81	0
2	OLC	A	406	25/25	0.66	0.26	4.00	66,73,89,89	0
2	OLC	A	404	25/25	0.73	0.24	3.73	74,78,81,81	0
2	OLC	A	407	17/25	0.79	0.24	3.65	56,63,69,70	0
2	OLC	A	413	8/25	0.61	0.39	2.78	72,77,83,84	0
2	OLC	A	401	25/25	0.72	0.21	2.75	54,62,71,72	0
2	OLC	A	411	25/25	0.74	0.21	2.13	78,87,92,93	0
2	OLC	A	402	19/25	0.91	0.17	0.80	52,61,66,69	0
2	OLC	A	409	25/25	0.91	0.15	0.45	43,55,66,67	0

## 6.5 Other polymers

There are no such residues in this entry.