



# Full wwPDB X-ray Structure Validation Report ⓘ

Feb 1, 2016 – 04:01 PM GMT

PDB ID : 4E3A  
Title : CRYSTAL STRUCTURE OF probable sugar kinase protein from Rhizobium etli CFN 42  
Authors : Malashkevich, V.N.; Bhosle, R.; Toro, R.; Hillerich, B.; Gizzi, A.; Garforth, S.; Kar, A.; Chan, M.K.; Laffuer, J.; Patel, H.; Matikainen, B.; Chamala, S.; Lim, S.; Celikgil, A.; Villegas, G.; Evans, B.; Zenchek, W.; Love, J.; Fiser, A.; Khafizov, K.; Seidel, R.; Bonanno, J.B.; Almo, S.C.; New York Structural Genomics Research Consortium (NYSGRG)  
Deposited on : 2012-03-09  
Resolution : 1.63 Å(reported)

This is a Full wwPDB X-ray Structure Validation Report for a publicly released PDB entry.  
We welcome your comments at [validation@mail.wwpdb.org](mailto:validation@mail.wwpdb.org)  
A user guide is available at  
<http://wwpdb.org/validation/2016/XrayValidationReportHelp>  
with specific help available everywhere you see the ⓘ symbol.

---

The following versions of software and data (see [references ⓘ](#)) were used in the production of this report:

MolProbity : 4.02b-467  
Mogul : 1.7 (RC4), CSD as536be (2015)  
Xtriage (Phenix) : 1.9-1692  
EDS : rb-20026688  
Percentile statistics : 20151230.v01 (using entries in the PDB archive December 30th 2015)  
Refmac : 5.8.0135  
CCP4 : 6.5.0  
Ideal geometry (proteins) : Engh & Huber (2001)  
Ideal geometry (DNA, RNA) : Parkinson et al. (1996)  
Validation Pipeline (wwPDB-VP) : trunk26865

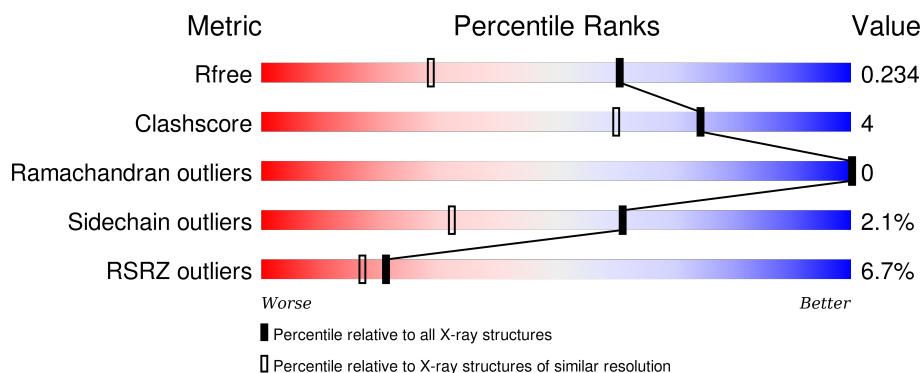
# 1 Overall quality at a glance

The following experimental techniques were used to determine the structure:

## *X-RAY DIFFRACTION*

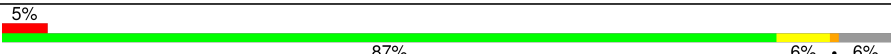
The reported resolution of this entry is 1.63 Å.

Percentile scores (ranging between 0-100) for global validation metrics of the entry are shown in the following graphic. The table shows the number of entries on which the scores are based.



Metric	Whole archive (#Entries)	Similar resolution (#Entries, resolution range(Å))
$R_{free}$	91344	1953 (1.66-1.62)
Clashscore	102246	2091 (1.66-1.62)
Ramachandran outliers	100387	2052 (1.66-1.62)
Sidechain outliers	100360	2052 (1.66-1.62)
RSRZ outliers	91569	1955 (1.66-1.62)

The table below summarises the geometric issues observed across the polymeric chains and their fit to the electron density. The red, orange, yellow and green segments on the lower bar indicate the fraction of residues that contain outliers for  $\geq 3$ , 2, 1 and 0 types of geometric quality criteria. A grey segment represents the fraction of residues that are not modelled. The numeric value for each fraction is indicated below the corresponding segment, with a dot representing fractions  $\leq 5\%$ . The upper red bar (where present) indicates the fraction of residues that have poor fit to the electron density. The numeric value is given above the bar.

Mol	Chain	Length	Quality of chain
1	A	352	 7% 86% 7% • 6%
1	B	352	 5% 87% 6% • 6%

## 2 Entry composition

There are 3 unique types of molecules in this entry. The entry contains 5501 atoms, of which 0 are hydrogens and 0 are deuteriums.

In the tables below, the ZeroOcc column contains the number of atoms modelled with zero occupancy, the AltConf column contains the number of residues with at least one atom in alternate conformation and the Trace column contains the number of residues modelled with at most 2 atoms.

- Molecule 1 is a protein called sugar kinase protein.

Mol	Chain	Residues	Atoms						ZeroOcc	AltConf	Trace
1	A	330	Total	C	N	O	S	Se	0	5	0
			2537	1584	447	489	7	10			
1	B	330	Total	C	N	O	S	Se	0	5	0
			2536	1583	446	490	7	10			

There are 44 discrepancies between the modelled and reference sequences:

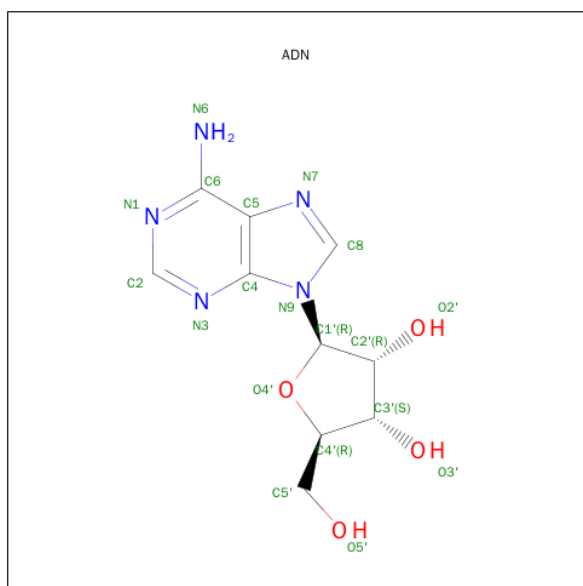
Chain	Residue	Modelled	Actual	Comment	Reference
A	-23	MSE	-	EXPRESSION TAG	UNP Q2KDX6
A	-22	HIS	-	EXPRESSION TAG	UNP Q2KDX6
A	-21	HIS	-	EXPRESSION TAG	UNP Q2KDX6
A	-20	HIS	-	EXPRESSION TAG	UNP Q2KDX6
A	-19	HIS	-	EXPRESSION TAG	UNP Q2KDX6
A	-18	HIS	-	EXPRESSION TAG	UNP Q2KDX6
A	-17	HIS	-	EXPRESSION TAG	UNP Q2KDX6
A	-16	SER	-	EXPRESSION TAG	UNP Q2KDX6
A	-15	SER	-	EXPRESSION TAG	UNP Q2KDX6
A	-14	GLY	-	EXPRESSION TAG	UNP Q2KDX6
A	-13	VAL	-	EXPRESSION TAG	UNP Q2KDX6
A	-12	ASP	-	EXPRESSION TAG	UNP Q2KDX6
A	-11	LEU	-	EXPRESSION TAG	UNP Q2KDX6
A	-10	GLY	-	EXPRESSION TAG	UNP Q2KDX6
A	-9	THR	-	EXPRESSION TAG	UNP Q2KDX6
A	-8	GLU	-	EXPRESSION TAG	UNP Q2KDX6
A	-7	ASN	-	EXPRESSION TAG	UNP Q2KDX6
A	-6	LEU	-	EXPRESSION TAG	UNP Q2KDX6
A	-5	TYR	-	EXPRESSION TAG	UNP Q2KDX6
A	-4	PHE	-	EXPRESSION TAG	UNP Q2KDX6
A	-3	GLN	-	EXPRESSION TAG	UNP Q2KDX6
A	-2	SER	-	EXPRESSION TAG	UNP Q2KDX6
B	-23	MSE	-	EXPRESSION TAG	UNP Q2KDX6
B	-22	HIS	-	EXPRESSION TAG	UNP Q2KDX6
B	-21	HIS	-	EXPRESSION TAG	UNP Q2KDX6

*Continued on next page...*

Continued from previous page...

Chain	Residue	Modelled	Actual	Comment	Reference
B	-20	HIS	-	EXPRESSION TAG	UNP Q2KDX6
B	-19	HIS	-	EXPRESSION TAG	UNP Q2KDX6
B	-18	HIS	-	EXPRESSION TAG	UNP Q2KDX6
B	-17	HIS	-	EXPRESSION TAG	UNP Q2KDX6
B	-16	SER	-	EXPRESSION TAG	UNP Q2KDX6
B	-15	SER	-	EXPRESSION TAG	UNP Q2KDX6
B	-14	GLY	-	EXPRESSION TAG	UNP Q2KDX6
B	-13	VAL	-	EXPRESSION TAG	UNP Q2KDX6
B	-12	ASP	-	EXPRESSION TAG	UNP Q2KDX6
B	-11	LEU	-	EXPRESSION TAG	UNP Q2KDX6
B	-10	GLY	-	EXPRESSION TAG	UNP Q2KDX6
B	-9	THR	-	EXPRESSION TAG	UNP Q2KDX6
B	-8	GLU	-	EXPRESSION TAG	UNP Q2KDX6
B	-7	ASN	-	EXPRESSION TAG	UNP Q2KDX6
B	-6	LEU	-	EXPRESSION TAG	UNP Q2KDX6
B	-5	TYR	-	EXPRESSION TAG	UNP Q2KDX6
B	-4	PHE	-	EXPRESSION TAG	UNP Q2KDX6
B	-3	GLN	-	EXPRESSION TAG	UNP Q2KDX6
B	-2	SER	-	EXPRESSION TAG	UNP Q2KDX6

- Molecule 2 is ADENOSINE (three-letter code: ADN) (formula: C<sub>10</sub>H<sub>13</sub>N<sub>5</sub>O<sub>4</sub>).



Mol	Chain	Residues	Atoms				ZeroOcc	AltConf
2	A	1	Total	C	N	O	0	0
			19	10	5	4		
2	B	1	Total	C	N	O	0	0
			19	10	5	4		

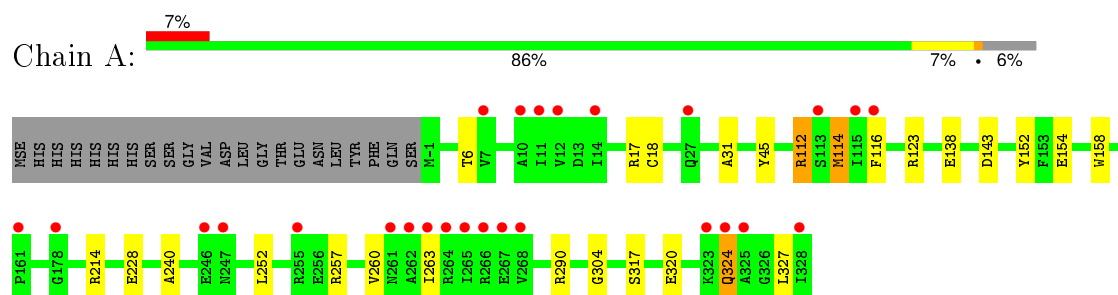
- Molecule 3 is water.

Mol	Chain	Residues	Atoms		ZeroOcc	AltConf
3	A	185	Total 185	O 185	0	0
3	B	205	Total 205	O 205	0	0

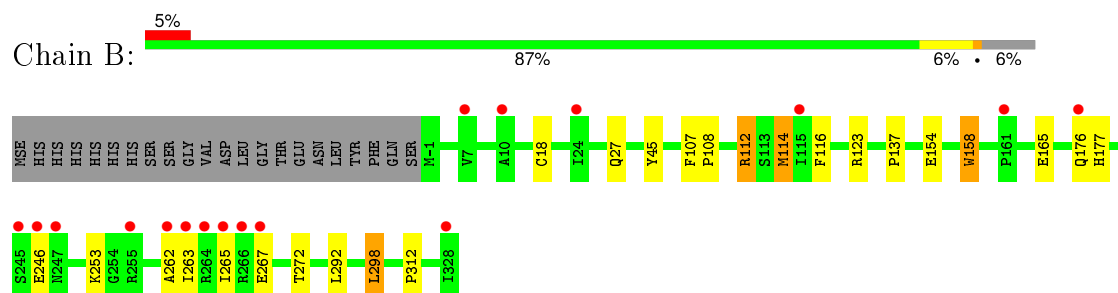
### 3 Residue-property plots [i](#)

These plots are drawn for all protein, RNA and DNA chains in the entry. The first graphic for a chain summarises the proportions of errors displayed in the second graphic. The second graphic shows the sequence view annotated by issues in geometry and electron density. Residues are color-coded according to the number of geometric quality criteria for which they contain at least one outlier: green = 0, yellow = 1, orange = 2 and red = 3 or more. A red dot above a residue indicates a poor fit to the electron density ( $RSRZ > 2$ ). Stretches of 2 or more consecutive residues without any outlier are shown as a green connector. Residues present in the sample, but not in the model, are shown in grey.

- Molecule 1: sugar kinase protein



- Molecule 1: sugar kinase protein



## 4 Data and refinement statistics

Property	Value	Source
Space group	P 21 21 21	Depositor
Cell constants a, b, c, $\alpha$ , $\beta$ , $\gamma$	80.88Å 91.72Å 91.59Å 90.00° 90.00° 90.00°	Depositor
Resolution (Å)	19.93 – 1.63 19.87 – 1.63	Depositor EDS
% Data completeness (in resolution range)	86.8 (19.93-1.63) 86.9 (19.87-1.63)	Depositor EDS
$R_{merge}$	0.06	Depositor
$R_{sym}$	(Not available)	Depositor
$\langle I/\sigma(I) \rangle$ <sup>1</sup>	1.57 (at 1.63Å)	Xtriage
Refinement program	REFMAC 5.6.0117	Depositor
R, $R_{free}$	0.169 , 0.228 0.178 , 0.234	Depositor DCC
$R_{free}$ test set	3742 reflections (5.32%)	DCC
Wilson B-factor (Å <sup>2</sup> )	28.1	Xtriage
Anisotropy	0.166	Xtriage
Bulk solvent $k_{sol}$ (e/Å <sup>3</sup> ), $B_{sol}$ (Å <sup>2</sup> )	0.38 , 42.7	EDS
Estimated twinning fraction	0.000 for -h,l,k	Xtriage
L-test for twinning <sup>2</sup>	$\langle  L  \rangle = 0.48$ , $\langle L^2 \rangle = 0.31$	Xtriage
Outliers	3 of 74110 reflections (0.004%)	Xtriage
$F_o, F_c$ correlation	0.97	EDS
Total number of atoms	5501	wwPDB-VP
Average B, all atoms (Å <sup>2</sup> )	28.0	wwPDB-VP

Xtriage's analysis on translational NCS is as follows: *The analyses of the Patterson function reveals a significant off-origin peak that is 49.44 % of the origin peak, indicating pseudo translational symmetry. The chance of finding a peak of this or larger height randomly in a structure without pseudo translational symmetry is equal to 7.4525e-05. The detected translational NCS is most likely also responsible for the elevated intensity ratio.*

<sup>1</sup> Intensities estimated from amplitudes.

<sup>2</sup> Theoretical values of  $\langle |L| \rangle$ ,  $\langle L^2 \rangle$  for acentric reflections are 0.5, 0.375 respectively for untwinned datasets, and 0.333, 0.2 for perfectly twinned datasets.

## 5 Model quality [i](#)

### 5.1 Standard geometry [i](#)

Bond lengths and bond angles in the following residue types are not validated in this section: ADN

The Z score for a bond length (or angle) is the number of standard deviations the observed value is removed from the expected value. A bond length (or angle) with  $|Z| > 5$  is considered an outlier worth inspection. RMSZ is the root-mean-square of all Z scores of the bond lengths (or angles).

Mol	Chain	Bond lengths		Bond angles	
		RMSZ	$\# Z  > 5$	RMSZ	$\# Z  > 5$
1	A	0.55	1/2582 (0.0%)	0.67	2/3472 (0.1%)
1	B	0.56	1/2581 (0.0%)	0.71	4/3471 (0.1%)
All	All	0.56	2/5163 (0.0%)	0.69	6/6943 (0.1%)

All (2) bond length outliers are listed below:

Mol	Chain	Res	Type	Atoms	Z	Observed(Å)	Ideal(Å)
1	A	158	TRP	CD2-CE2	5.75	1.48	1.41
1	B	158	TRP	CD2-CE2	5.50	1.48	1.41

All (6) bond angle outliers are listed below:

Mol	Chain	Res	Type	Atoms	Z	Observed(°)	Ideal(°)
1	B	114	MSE	CG-SE-CE	-9.40	78.22	98.90
1	A	114	MSE	CG-SE-CE	-9.16	78.75	98.90
1	B	298	LEU	CA-CB-CG	6.47	130.19	115.30
1	B	114	MSE	CA-CB-CG	-6.47	102.30	113.30
1	A	114	MSE	CA-CB-CG	-5.57	103.83	113.30
1	B	298	LEU	CB-CG-CD2	-5.03	102.44	111.00

There are no chirality outliers.

There are no planarity outliers.

### 5.2 Too-close contacts [i](#)

In the following table, the Non-H and H(model) columns list the number of non-hydrogen atoms and hydrogen atoms in the chain respectively. The H(added) column lists the number of hydrogen atoms added and optimized by MolProbity. The Clashes column lists the number of clashes within the asymmetric unit, whereas Symm-Clashes lists symmetry related clashes.



Mol	Chain	Non-H	H(model)	H(added)	Clashes	Symm-Clashes
1	A	2537	0	2513	22	0
1	B	2536	0	2509	19	0
2	A	19	0	13	1	0
2	B	19	0	13	1	0
3	A	185	0	0	6	0
3	B	205	0	0	5	0
All	All	5501	0	5048	41	0

The all-atom clashscore is defined as the number of clashes found per 1000 atoms (including hydrogen atoms). The all-atom clashscore for this structure is 4.

All (41) close contacts within the same asymmetric unit are listed below, sorted by their clash magnitude.

Atom-1	Atom-2	Interatomic distance (Å)	Clash overlap (Å)
1:B:112[A]:ARG:CG	1:B:112[A]:ARG:HH11	1.57	1.17
1:B:112[A]:ARG:NH1	1:B:112[A]:ARG:HG2	1.46	1.10
1:A:112:ARG:HH11	1:A:112:ARG:HG2	0.97	1.07
1:A:112:ARG:NH1	1:A:112:ARG:HG2	1.79	0.93
1:A:112:ARG:HH11	1:A:112:ARG:CG	1.84	0.84
1:A:252:LEU:HD23	1:A:257:ARG:HG2	1.63	0.80
1:A:17:ARG:HG3	3:A:700:HOH:O	1.85	0.76
1:B:112[A]:ARG:HG2	1:B:112[A]:ARG:HH11	0.65	0.65
1:B:112[A]:ARG:CG	1:B:112[A]:ARG:NH1	2.31	0.65
1:B:263:ILE:HG21	3:B:667:HOH:O	1.96	0.64
1:A:112:ARG:HD2	3:A:769:HOH:O	1.98	0.63
1:B:263:ILE:CG2	3:B:667:HOH:O	2.49	0.59
1:A:143:ASP:HB3	3:A:667:HOH:O	2.03	0.59
1:A:214:ARG:NH1	3:A:785:HOH:O	2.36	0.58
1:A:290:ARG:NH2	1:A:327:LEU:O	2.37	0.57
1:B:253:LYS:HD2	1:B:292:LEU:HD11	1.87	0.56
1:A:263:ILE:HD11	1:A:304:GLY:HA3	1.88	0.55
1:A:45:TYR:CA	1:A:114:MSE:HE1	2.39	0.53
1:B:137:PRO:HG3	1:B:165:GLU:HG2	1.92	0.52
1:B:45:TYR:N	1:B:114:MSE:HE1	2.25	0.51
1:A:324:GLN:HG3	3:A:774:HOH:O	2.11	0.49
1:A:18:CYS:SG	1:A:116:PHE:HB3	2.53	0.49
1:B:272:THR:HG22	1:B:312:PRO:HB3	1.95	0.49
1:A:112:ARG:NH1	1:A:112:ARG:CG	2.55	0.47
1:B:107:PHE:HA	1:B:108:PRO:C	2.33	0.47
1:B:18:CYS:SG	1:B:116:PHE:HB3	2.55	0.47
1:B:176:GLN:HG3	3:B:753:HOH:O	2.15	0.46
1:A:240:ALA:HB3	1:A:252:LEU:HD12	1.98	0.45

*Continued on next page...*

*Continued from previous page...*

Atom-1	Atom-2	Interatomic distance (Å)	Clash overlap (Å)
1:A:45:TYR:N	1:A:114:MSE:HE1	2.32	0.45
1:B:45:TYR:HB2	1:B:114:MSE:HE1	1.98	0.45
1:A:252:LEU:CD2	1:A:257:ARG:HG2	2.42	0.45
1:B:154:GLU:OE1	2:B:500:ADN:H2	2.17	0.45
1:B:27:GLN:HG3	3:B:786:HOH:O	2.17	0.44
1:B:265:ILE:O	1:B:265:ILE:HG23	2.18	0.44
1:A:6:THR:HA	1:A:152:TYR:O	2.18	0.44
1:B:177:HIS:HE1	3:B:668:HOH:O	2.01	0.44
1:A:317:SER:HB3	1:A:320:GLU:HB2	1.99	0.44
1:A:214:ARG:NH2	3:A:724:HOH:O	2.51	0.43
1:A:154:GLU:OE1	2:A:500:ADN:H2	2.19	0.43
1:B:246:GLU:O	1:B:262:ALA:HB1	2.19	0.42

There are no symmetry-related clashes.

## 5.3 Torsion angles [i](#)

### 5.3.1 Protein backbone [i](#)

In the following table, the Percentiles column shows the percent Ramachandran outliers of the chain as a percentile score with respect to all X-ray entries followed by that with respect to entries of similar resolution.

The Analysed column shows the number of residues for which the backbone conformation was analysed, and the total number of residues.

Mol	Chain	Analysed	Favoured	Allowed	Outliers	Percentiles	
1	A	333/352 (95%)	325 (98%)	8 (2%)	0	100	100
1	B	333/352 (95%)	325 (98%)	8 (2%)	0	100	100
All	All	666/704 (95%)	650 (98%)	16 (2%)	0	100	100

There are no Ramachandran outliers to report.

### 5.3.2 Protein sidechains [i](#)

In the following table, the Percentiles column shows the percent sidechain outliers of the chain as a percentile score with respect to all X-ray entries followed by that with respect to entries of similar resolution.

The Analysed column shows the number of residues for which the sidechain conformation was

analysed, and the total number of residues.

Mol	Chain	Analysed	Rotameric	Outliers	Percentiles	
1	A	262/266 (98%)	255 (97%)	7 (3%)	52	22
1	B	262/266 (98%)	255 (97%)	7 (3%)	52	22
All	All	524/532 (98%)	510 (97%)	14 (3%)	61	22

All (14) residues with a non-rotameric sidechain are listed below:

Mol	Chain	Res	Type
1	A	112	ARG
1	A	123[A]	ARG
1	A	123[B]	ARG
1	A	138	GLU
1	A	228	GLU
1	A	260	VAL
1	A	324	GLN
1	B	112[A]	ARG
1	B	112[B]	ARG
1	B	123[A]	ARG
1	B	123[B]	ARG
1	B	158	TRP
1	B	267	GLU
1	B	298	LEU

Some sidechains can be flipped to improve hydrogen bonding and reduce clashes. There are no such sidechains identified.

### 5.3.3 RNA ⓘ

There are no RNA molecules in this entry.

## 5.4 Non-standard residues in protein, DNA, RNA chains ⓘ

There are no non-standard protein/DNA/RNA residues in this entry.

## 5.5 Carbohydrates ⓘ

There are no carbohydrates in this entry.

## 5.6 Ligand geometry

2 ligands are modelled in this entry.

In the following table, the Counts columns list the number of bonds (or angles) for which Mogul statistics could be retrieved, the number of bonds (or angles) that are observed in the model and the number of bonds (or angles) that are defined in the chemical component dictionary. The Link column lists molecule types, if any, to which the group is linked. The Z score for a bond length (or angle) is the number of standard deviations the observed value is removed from the expected value. A bond length (or angle) with  $|Z| > 2$  is considered an outlier worth inspection. RMSZ is the root-mean-square of all Z scores of the bond lengths (or angles).

Mol	Type	Chain	Res	Link	Bond lengths			Bond angles		
					Counts	RMSZ	# $ Z  > 2$	Counts	RMSZ	# $ Z  > 2$
2	ADN	A	500	-	16,21,21	1.10	1 (6%)	16,31,31	2.89	4 (25%)
2	ADN	B	500	-	16,21,21	1.16	1 (6%)	16,31,31	2.60	5 (31%)

In the following table, the Chirals column lists the number of chiral outliers, the number of chiral centers analysed, the number of these observed in the model and the number defined in the chemical component dictionary. Similar counts are reported in the Torsion and Rings columns. '-' means no outliers of that kind were identified.

Mol	Type	Chain	Res	Link	Chirals	Torsions	Rings
2	ADN	A	500	-	-	0/2/22/22	0/3/3/3
2	ADN	B	500	-	-	0/2/22/22	0/3/3/3

All (2) bond length outliers are listed below:

Mol	Chain	Res	Type	Atoms	Z	Observed(Å)	Ideal(Å)
2	A	500	ADN	C5-C4	3.04	1.47	1.40
2	B	500	ADN	C5-C4	3.37	1.48	1.40

All (9) bond angle outliers are listed below:

Mol	Chain	Res	Type	Atoms	Z	Observed(°)	Ideal(°)
2	A	500	ADN	N3-C2-N1	-7.54	123.12	128.89
2	B	500	ADN	C4'-O4'-C1'	-6.27	102.83	109.72
2	A	500	ADN	C4'-O4'-C1'	-5.95	103.18	109.72
2	B	500	ADN	N3-C2-N1	-5.88	124.39	128.89
2	A	500	ADN	C1'-N9-C4	-4.52	120.11	126.94
2	B	500	ADN	C1'-N9-C4	-3.22	122.09	126.94
2	B	500	ADN	O4'-C1'-N9	2.09	112.47	108.10
2	B	500	ADN	C2-N1-C6	2.48	123.19	118.77
2	A	500	ADN	C2-N1-C6	2.51	123.26	118.77

There are no chirality outliers.

There are no torsion outliers.

There are no ring outliers.

2 monomers are involved in 2 short contacts:

Mol	Chain	Res	Type	Clashes	Symm-Clashes
2	A	500	ADN	1	0
2	B	500	ADN	1	0

## 5.7 Other polymers [i](#)

There are no such residues in this entry.

## 5.8 Polymer linkage issues [i](#)

There are no chain breaks in this entry.

## 6 Fit of model and data

### 6.1 Protein, DNA and RNA chains

In the following table, the column labelled ‘#RSRZ> 2’ contains the number (and percentage) of RSRZ outliers, followed by percent RSRZ outliers for the chain as percentile scores relative to all X-ray entries and entries of similar resolution. The OWAB column contains the minimum, median, 95<sup>th</sup> percentile and maximum values of the occupancy-weighted average B-factor per residue. The column labelled ‘Q< 0.9’ lists the number of (and percentage) of residues with an average occupancy less than 0.9.

Mol	Chain	Analysed	<RSRZ>	#RSRZ>2	OWAB(Å <sup>2</sup> )	Q<0.9
1	A	320/352 (90%)	0.22	26 (8%) 15 12	17, 26, 43, 71	0
1	B	320/352 (90%)	0.17	17 (5%) 30 26	15, 24, 42, 81	0
All	All	640/704 (90%)	0.19	43 (6%) 21 17	15, 25, 42, 81	0

All (43) RSRZ outliers are listed below:

Mol	Chain	Res	Type	RSRZ
1	B	264	ARG	7.7
1	B	266	ARG	7.5
1	A	328	ILE	6.5
1	A	266	ARG	6.1
1	B	328	ILE	5.7
1	B	265	ILE	5.5
1	B	262	ALA	5.2
1	A	267	GLU	4.9
1	A	264	ARG	4.9
1	B	263	ILE	4.8
1	B	161	PRO	4.0
1	A	262	ALA	3.8
1	A	255	ARG	3.7
1	A	161	PRO	3.7
1	B	245	SER	3.6
1	A	263	ILE	3.4
1	B	246	GLU	3.2
1	B	255	ARG	3.2
1	B	247	ASN	3.1
1	A	261	ASN	3.1
1	A	247	ASN	3.0
1	A	325	ALA	3.0
1	A	115	ILE	2.9
1	B	176	GLN	2.7

*Continued on next page...*

*Continued from previous page...*

Mol	Chain	Res	Type	RSRZ
1	A	324	GLN	2.7
1	B	267	GLU	2.6
1	B	7	VAL	2.6
1	B	10	ALA	2.6
1	A	268	VAL	2.6
1	A	323	LYS	2.5
1	A	11	ILE	2.5
1	B	24	ILE	2.5
1	A	12	VAL	2.5
1	B	115	ILE	2.4
1	A	7	VAL	2.4
1	A	246	GLU	2.3
1	A	10	ALA	2.2
1	A	265	ILE	2.2
1	A	14	ILE	2.2
1	A	178	GLY	2.2
1	A	113	SER	2.1
1	A	116	PHE	2.1
1	A	27	GLN	2.0

## 6.2 Non-standard residues in protein, DNA, RNA chains [i](#)

There are no non-standard protein/DNA/RNA residues in this entry.

## 6.3 Carbohydrates [i](#)

There are no carbohydrates in this entry.

## 6.4 Ligands [i](#)

In the following table, the Atoms column lists the number of modelled atoms in the group and the number defined in the chemical component dictionary. LLDF column lists the quality of electron density of the group with respect to its neighbouring residues in protein, DNA or RNA chains. The B-factors column lists the minimum, median, 95<sup>th</sup> percentile and maximum values of B factors of atoms in the group. The column labelled 'Q< 0.9' lists the number of atoms with occupancy less than 0.9.

Mol	Type	Chain	Res	Atoms	RSCC	RSR	LLDF	B-factors(Å <sup>2</sup> )	Q<0.9
2	ADN	A	500	19/19	0.94	0.11	0.14	19,22,24,25	0
2	ADN	B	500	19/19	0.92	0.10	-0.13	15,23,26,27	0

## 6.5 Other polymers

There are no such residues in this entry.