



wwPDB X-ray Structure Validation Summary Report ⓘ

Jan 31, 2016 – 07:08 PM GMT

PDB ID : 1E5V
Title : OXIDIZED DMSO REDUCTASE EXPOSED TO HEPES BUFFER
Authors : Bailey, S.; Bennett, B.; Adams, B.; Smith, A.T.; Bray, R.C.
Deposited on : 2000-08-03
Resolution : 2.40 Å(reported)

This is a wwPDB X-ray Structure Validation Summary Report for a publicly released PDB entry.
We welcome your comments at validation@mail.wwpdb.org
A user guide is available at
<http://wwpdb.org/validation/2016/XrayValidationReportHelp>
with specific help available everywhere you see the ⓘ symbol.

The following versions of software and data (see [references ⓘ](#)) were used in the production of this report:

MolProbity : 4.02b-467
Mogul : 1.7 (RC4), CSD as536be (2015)
Xtriage (Phenix) : **NOT EXECUTED**
EDS : **NOT EXECUTED**
Percentile statistics : 20151230.v01 (using entries in the PDB archive December 30th 2015)
Ideal geometry (proteins) : Engh & Huber (2001)
Ideal geometry (DNA, RNA) : Parkinson et al. (1996)
Validation Pipeline (wwPDB-VP) : trunk26865

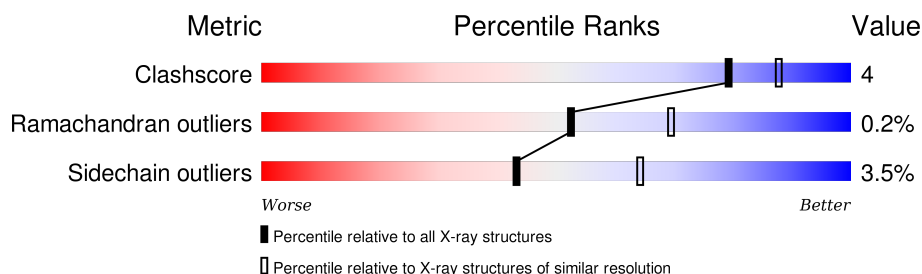
1 Overall quality at a glance

The following experimental techniques were used to determine the structure:

X-RAY DIFFRACTION

The reported resolution of this entry is 2.40 Å.

Percentile scores (ranging between 0-100) for global validation metrics of the entry are shown in the following graphic. The table shows the number of entries on which the scores are based.



Metric	Whole archive (#Entries)	Similar resolution (#Entries, resolution range(Å))
Clashscore	102246	3407 (2.40-2.40)
Ramachandran outliers	100387	3351 (2.40-2.40)
Sidechain outliers	100360	3352 (2.40-2.40)

The table below summarises the geometric issues observed across the polymeric chains and their fit to the electron density. The red, orange, yellow and green segments on the lower bar indicate the fraction of residues that contain outliers for ≥ 3 , 2, 1 and 0 types of geometric quality criteria. A grey segment represents the fraction of residues that are not modelled. The numeric value for each fraction is indicated below the corresponding segment, with a dot representing fractions $\leq 5\%$. The upper red bar (where present) indicates the fraction of residues that have poor fit to the electron density. The numeric value is given above the bar.

Note EDS was not executed.

Mol	Chain	Length	Quality of chain
1	A	823	 77% 14% • 7%
1	C	823	 74% 16% • 7%

2 Entry composition

There are 5 unique types of molecules in this entry. The entry contains 12440 atoms, of which 0 are hydrogens and 0 are deuteriums.

In the tables below, the ZeroOcc column contains the number of atoms modelled with zero occupancy, the AltConf column contains the number of residues with at least one atom in alternate conformation and the Trace column contains the number of residues modelled with at most 2 atoms.

- Molecule 1 is a protein called DMSO REDUCTASE.

Mol	Chain	Residues	Atoms					ZeroOcc	AltConf	Trace
1	A	766	Total	C	N	O	S	0	0	0
			5884	3741	996	1120	27			
1	C	766	Total	C	N	O	S	0	0	0
			5884	3741	996	1120	27			

There are 26 discrepancies between the modelled and reference sequences:

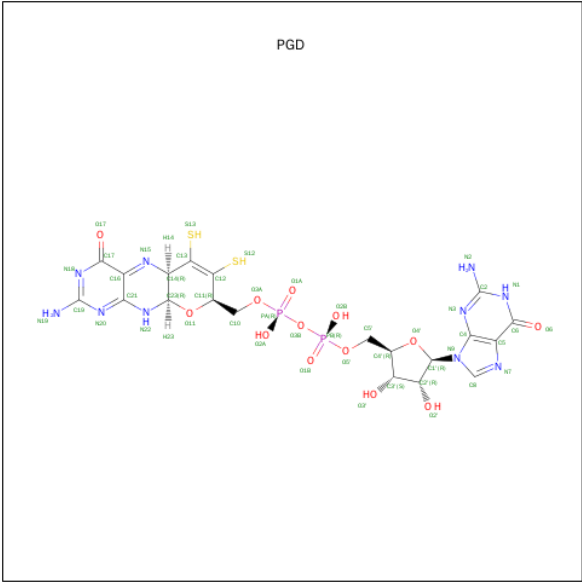
Chain	Residue	Modelled	Actual	Comment	Reference
A	39	SER	THR	SEQUENCED FROM MAP	UNP Q52675
A	43	ALA	GLU	SEQUENCED FROM MAP	UNP Q52675
A	107	GLU	GLN	SEQUENCED FROM MAP	UNP Q52675
A	234	GLU	ASP	SEQUENCED FROM MAP	UNP Q52675
A	236	ILE	VAL	SEQUENCED FROM MAP	UNP Q52675
A	280	ASP	MET	SEQUENCED FROM MAP	UNP Q52675
A	294	GLU	SER	SEQUENCED FROM MAP	UNP Q52675
A	295	GLY	ASP	SEQUENCED FROM MAP	UNP Q52675
A	312	GLU	ILE	SEQUENCED FROM MAP	UNP Q52675
A	374	ALA	SER	SEQUENCED FROM MAP	UNP Q52675
A	456	VAL	ILE	SEQUENCED FROM MAP	UNP Q52675
A	526	ALA	LYS	SEQUENCED FROM MAP	UNP Q52675
A	555	GLN	GLU	SEQUENCED FROM MAP	UNP Q52675
C	39	SER	THR	SEQUENCED FROM MAP	UNP Q52675
C	43	ALA	GLU	SEQUENCED FROM MAP	UNP Q52675
C	107	GLU	GLN	SEQUENCED FROM MAP	UNP Q52675
C	234	GLU	ASP	SEQUENCED FROM MAP	UNP Q52675
C	236	ILE	VAL	SEQUENCED FROM MAP	UNP Q52675
C	280	ASP	MET	SEQUENCED FROM MAP	UNP Q52675
C	294	GLU	SER	SEQUENCED FROM MAP	UNP Q52675
C	295	GLY	ASP	SEQUENCED FROM MAP	UNP Q52675
C	312	GLU	ILE	SEQUENCED FROM MAP	UNP Q52675
C	374	ALA	SER	SEQUENCED FROM MAP	UNP Q52675
C	456	VAL	ILE	SEQUENCED FROM MAP	UNP Q52675
C	526	ALA	LYS	SEQUENCED FROM MAP	UNP Q52675

Continued on next page...

Continued from previous page...

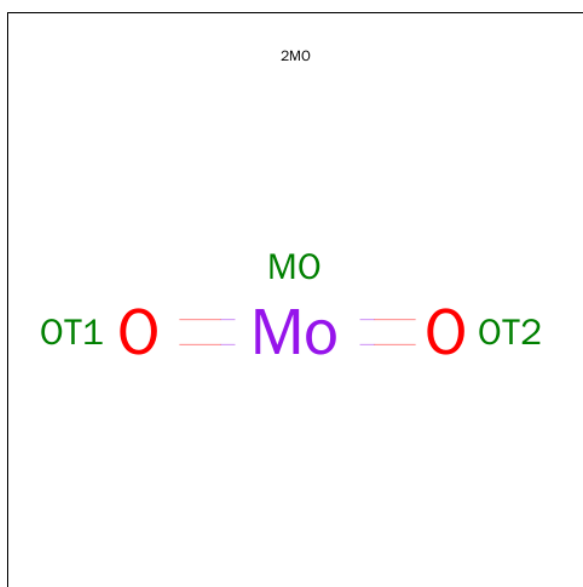
Chain	Residue	Modelled	Actual	Comment	Reference
C	555	GLN	GLU	SEQUENCED FROM MAP	UNP Q52675

- Molecule 2 is 2-AMINO-5,6-DIMERCAPTO-7-METHYL-3,7,8A,9-TETRAHYDRO-8-OXA-1,3,9,10-TETRAAZA-ANTHRACEN-4-ONE GUANOSINE DINUCLEOTIDE (three-letter code: PGD) (formula: C₂₀H₂₄N₁₀O₁₃P₂S₂).



Mol	Chain	Residues	Atoms						ZeroOcc	AltConf
2	A	1	Total	C	N	O	P	S	0	0
			47	20	10	13	2	2		
2	A	1	Total	C	N	O	P	S	0	0
			47	20	10	13	2	2		
2	C	1	Total	C	N	O	P	S	0	0
			47	20	10	13	2	2		
2	C	1	Total	C	N	O	P	S	0	0
			47	20	10	13	2	2		

- Molecule 3 is MOLYBDENUM (IV)OXIDE (three-letter code: 2MO) (formula: MoO₂).



Mol	Chain	Residues	Atoms			ZeroOcc	AltConf
3	A	1	Total	Mo	O	0	0
			3	1	2		
3	C	1	Total	Mo	O	0	0
			3	1	2		

- Molecule 4 is SULFATE ION (three-letter code: SO4) (formula: O₄S).



Mol	Chain	Residues	Atoms			ZeroOcc	AltConf
4	A	1	Total	O	S	0	0
			5	4	1		
4	C	1	Total	O	S	0	0
			5	4	1		

- Molecule 5 is water.

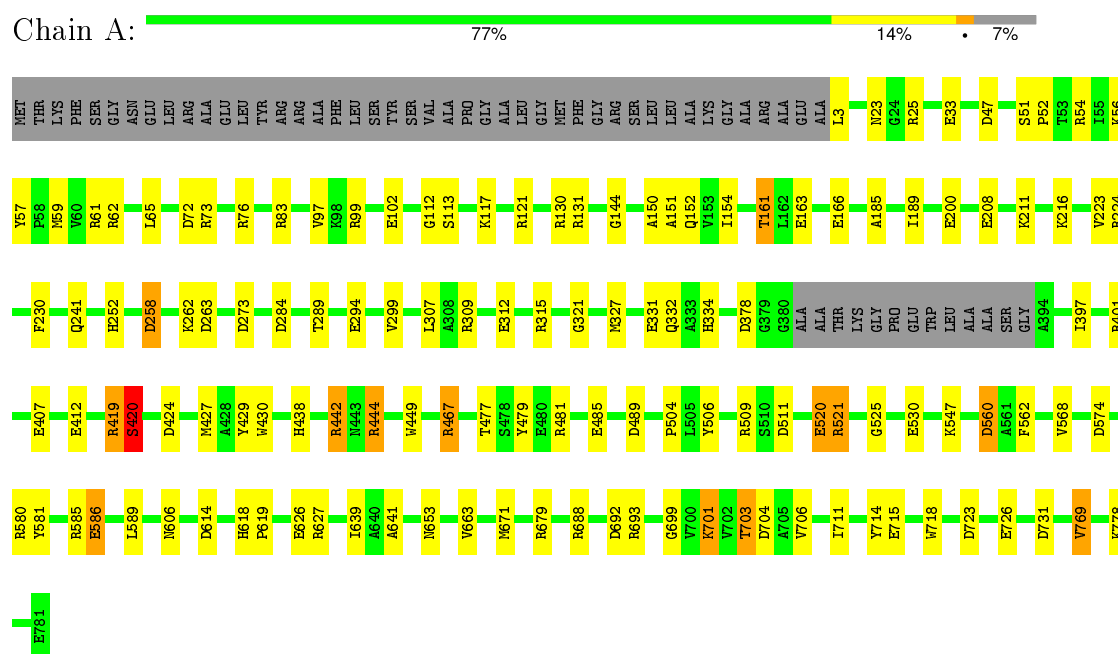
Mol	Chain	Residues	Atoms		ZeroOcc	AltConf
5	A	261	Total 261	O 261	0	0
5	C	207	Total 207	O 207	0	0

3 Residue-property plots

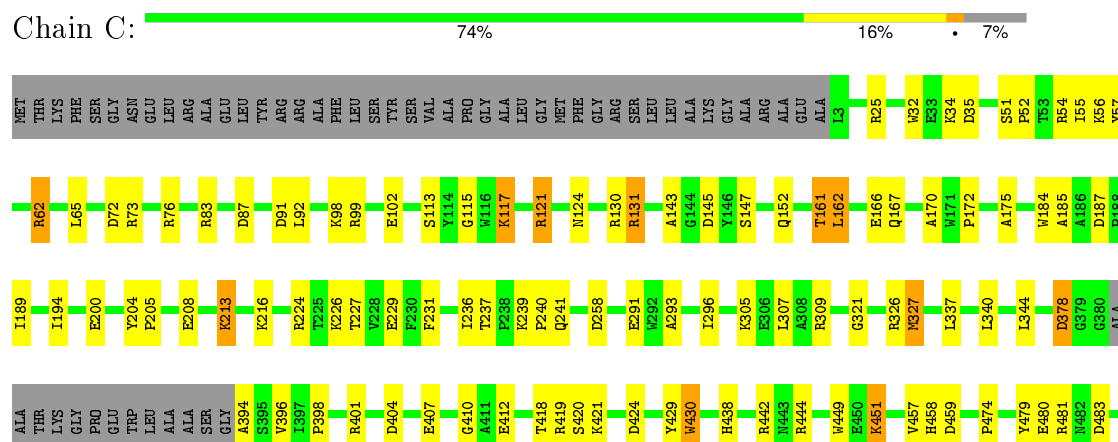
These plots are drawn for all protein, RNA and DNA chains in the entry. The first graphic for a chain summarises the proportions of errors displayed in the second graphic. The second graphic shows the sequence view annotated by issues in geometry and electron density. Residues are color-coded according to the number of geometric quality criteria for which they contain at least one outlier: green = 0, yellow = 1, orange = 2 and red = 3 or more. A red dot above a residue indicates a poor fit to the electron density ($RSRZ > 2$). Stretches of 2 or more consecutive residues without any outlier are shown as a green connector. Residues present in the sample, but not in the model, are shown in grey.

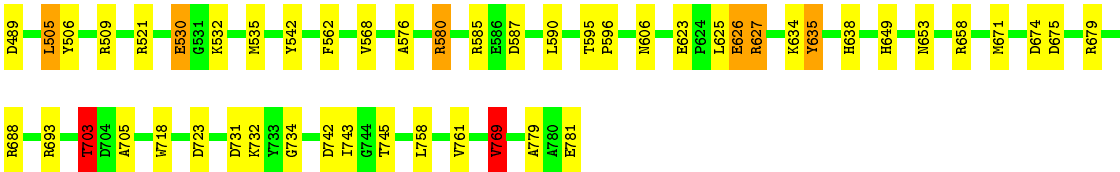
Note EDS was not executed.

• Molecule 1: DMSO REDUCTASE



• Molecule 1: DMSO REDUCTASE





4 Data and refinement statistics

Xtriage (Phenix) and EDS were not executed - this section will therefore be incomplete.

Property	Value	Source
Space group	P 21 21 21	Depositor
Cell constants a, b, c, α , β , γ	70.35Å 117.18Å 233.42Å 90.00° 90.00° 90.00°	Depositor
Resolution (Å)	20.00 – 2.40	Depositor
% Data completeness (in resolution range)	80.4 (20.00-2.40)	Depositor
R_{merge}	0.08	Depositor
R_{sym}	(Not available)	Depositor
Refinement program	REFMAC	Depositor
R, R_{free}	0.171 , 0.223	Depositor
Estimated twinning fraction	No twinning to report.	Xtriage
Total number of atoms	12440	wwPDB-VP
Average B, all atoms (Å ²)	22.0	wwPDB-VP

5 Model quality [i](#)

5.1 Standard geometry [i](#)

Bond lengths and bond angles in the following residue types are not validated in this section: PGD, SO4, 2MO

The Z score for a bond length (or angle) is the number of standard deviations the observed value is removed from the expected value. A bond length (or angle) with $|Z| > 5$ is considered an outlier worth inspection. RMSZ is the root-mean-square of all Z scores of the bond lengths (or angles).

Mol	Chain	Bond lengths		Bond angles	
		RMSZ	$\# Z > 5$	RMSZ	$\# Z > 5$
1	A	0.65	0/6041	1.59	91/8221 (1.1%)
1	C	0.66	1/6041 (0.0%)	1.64	100/8221 (1.2%)
All	All	0.66	1/12082 (0.0%)	1.62	191/16442 (1.2%)

Chiral center outliers are detected by calculating the chiral volume of a chiral center and verifying if the center is modelled as a planar moiety or with the opposite hand. A planarity outlier is detected by checking planarity of atoms in a peptide group, atoms in a mainchain group or atoms of a sidechain that are expected to be planar.

Mol	Chain	#Chirality outliers	#Planarity outliers
1	C	0	1

All (1) bond length outliers are listed below:

Mol	Chain	Res	Type	Atoms	Z	Observed(Å)	Ideal(Å)
1	C	147	SER	CB-OG	-5.62	1.34	1.42

The worst 5 of 191 bond angle outliers are listed below:

Mol	Chain	Res	Type	Atoms	Z	Observed(°)	Ideal(°)
1	C	121	ARG	CD-NE-CZ	25.09	158.72	123.60
1	C	442	ARG	NE-CZ-NH2	-17.94	111.33	120.30
1	C	62	ARG	NE-CZ-NH2	17.25	128.93	120.30
1	C	326	ARG	NE-CZ-NH2	-16.13	112.24	120.30
1	C	627	ARG	NE-CZ-NH2	-14.53	113.03	120.30

There are no chirality outliers.

All (1) planarity outliers are listed below:

Mol	Chain	Res	Type	Group
1	C	231	PHE	Mainchain

5.2 Too-close contacts [i](#)

In the following table, the Non-H and H(model) columns list the number of non-hydrogen atoms and hydrogen atoms in the chain respectively. The H(added) column lists the number of hydrogen atoms added and optimized by MolProbity. The Clashes column lists the number of clashes within the asymmetric unit, whereas Symm-Clashes lists symmetry related clashes.

Mol	Chain	Non-H	H(model)	H(added)	Clashes	Symm-Clashes
1	A	5884	0	5690	31	0
1	C	5884	0	5690	52	0
2	A	94	0	40	0	0
2	C	94	0	40	2	0
3	A	3	0	0	0	0
3	C	3	0	0	0	0
4	A	5	0	0	0	0
4	C	5	0	0	0	0
5	A	261	0	0	2	0
5	C	207	0	0	1	0
All	All	12440	0	11460	83	0

The all-atom clashscore is defined as the number of clashes found per 1000 atoms (including hydrogen atoms). The all-atom clashscore for this structure is 4.

The worst 5 of 83 close contacts within the same asymmetric unit are listed below, sorted by their clash magnitude.

Atom-1	Atom-2	Interatomic distance (Å)	Clash overlap (Å)
1:C:54:ARG:NH1	1:C:505:LEU:HD12	2.09	0.68
1:A:223:VAL:HG22	1:A:706:VAL:HG12	1.75	0.67
1:C:732:LYS:HD2	1:C:769:VAL:HG13	1.77	0.65
1:C:627:ARG:HD2	5:C:2152:HOH:O	1.98	0.64
1:C:131:ARG:HB2	1:C:378:ASP:HA	1.79	0.63

There are no symmetry-related clashes.

5.3 Torsion angles

5.3.1 Protein backbone

In the following table, the Percentiles column shows the percent Ramachandran outliers of the chain as a percentile score with respect to all X-ray entries followed by that with respect to entries of similar resolution.

The Analysed column shows the number of residues for which the backbone conformation was analysed, and the total number of residues.

Mol	Chain	Analysed	Favoured	Allowed	Outliers	Percentiles	
1	A	762/823 (93%)	736 (97%)	25 (3%)	1 (0%)	56	74
1	C	762/823 (93%)	736 (97%)	24 (3%)	2 (0%)	46	63
All	All	1524/1646 (93%)	1472 (97%)	49 (3%)	3 (0%)	52	69

All (3) Ramachandran outliers are listed below:

Mol	Chain	Res	Type
1	C	117	LYS
1	A	117	LYS
1	C	734	GLY

5.3.2 Protein sidechains

In the following table, the Percentiles column shows the percent sidechain outliers of the chain as a percentile score with respect to all X-ray entries followed by that with respect to entries of similar resolution.

The Analysed column shows the number of residues for which the sidechain conformation was analysed, and the total number of residues.

Mol	Chain	Analysed	Rotameric	Outliers	Percentiles	
1	A	610/648 (94%)	587 (96%)	23 (4%)	40	60
1	C	610/648 (94%)	590 (97%)	20 (3%)	45	66
All	All	1220/1296 (94%)	1177 (96%)	43 (4%)	43	64

5 of 43 residues with a non-rotameric sidechain are listed below:

Mol	Chain	Res	Type
1	A	703	THR
1	C	121	ARG
1	C	580	ARG

Continued on next page...

Continued from previous page...

Mol	Chain	Res	Type
1	A	715	GLU
1	A	769	VAL

Some sidechains can be flipped to improve hydrogen bonding and reduce clashes. All (5) such sidechains are listed below:

Mol	Chain	Res	Type
1	A	241	GLN
1	A	653	ASN
1	C	37	HIS
1	C	241	GLN
1	C	653	ASN

5.3.3 RNA [i](#)

There are no RNA molecules in this entry.

5.4 Non-standard residues in protein, DNA, RNA chains [i](#)

There are no non-standard protein/DNA/RNA residues in this entry.

5.5 Carbohydrates [i](#)

There are no carbohydrates in this entry.

5.6 Ligand geometry [i](#)

8 ligands are modelled in this entry.

In the following table, the Counts columns list the number of bonds (or angles) for which Mogul statistics could be retrieved, the number of bonds (or angles) that are observed in the model and the number of bonds (or angles) that are defined in the chemical component dictionary. The Link column lists molecule types, if any, to which the group is linked. The Z score for a bond length (or angle) is the number of standard deviations the observed value is removed from the expected value. A bond length (or angle) with $|Z| > 2$ is considered an outlier worth inspection. RMSZ is the root-mean-square of all Z scores of the bond lengths (or angles).

Mol	Type	Chain	Res	Link	Bond lengths			Bond angles		
					Counts	RMSZ	$\# Z > 2$	Counts	RMSZ	$\# Z > 2$
2	PGD	A	801	3	34,52,52	2.50	12 (35%)	39,81,81	2.28	13 (33%)

Mol	Type	Chain	Res	Link	Bond lengths			Bond angles		
					Counts	RMSZ	# Z > 2	Counts	RMSZ	# Z > 2
2	PGD	A	802	3	34,52,52	2.67	14 (41%)	39,81,81	1.95	11 (28%)
3	2MO	A	803	1,2	0,2,2	0.00	-	0,1,1	0.00	-
4	SO4	A	901	-	4,4,4	0.54	0	6,6,6	0.41	0
2	PGD	C	801	3	34,52,52	2.75	16 (47%)	39,81,81	2.19	13 (33%)
2	PGD	C	802	3	34,52,52	2.63	13 (38%)	39,81,81	2.39	10 (25%)
3	2MO	C	803	1,2	0,2,2	0.00	-	0,1,1	0.00	-
4	SO4	C	901	-	4,4,4	0.75	0	6,6,6	0.43	0

In the following table, the Chirals column lists the number of chiral outliers, the number of chiral centers analysed, the number of these observed in the model and the number defined in the chemical component dictionary. Similar counts are reported in the Torsion and Rings columns. '-' means no outliers of that kind were identified.

Mol	Type	Chain	Res	Link	Chirals	Torsions	Rings
2	PGD	A	801	3	-	0/18/82/82	0/6/6/6
2	PGD	A	802	3	-	0/18/82/82	0/6/6/6
3	2MO	A	803	1,2	-	0/0/0/0	0/0/0/0
4	SO4	A	901	-	-	0/0/0/0	0/0/0/0
2	PGD	C	801	3	-	0/18/82/82	0/6/6/6
2	PGD	C	802	3	-	0/18/82/82	0/6/6/6
3	2MO	C	803	1,2	-	0/0/0/0	0/0/0/0
4	SO4	C	901	-	-	0/0/0/0	0/0/0/0

The worst 5 of 55 bond length outliers are listed below:

Mol	Chain	Res	Type	Atoms	Z	Observed(Å)	Ideal(Å)
2	C	801	PGD	O11-C11	-3.76	1.38	1.43
2	A	802	PGD	O11-C11	-3.58	1.38	1.43
2	A	802	PGD	C5-C4	-2.80	1.34	1.40
2	C	802	PGD	C5-C4	-2.73	1.34	1.40
2	C	801	PGD	O4'-C4'	-2.53	1.39	1.45

The worst 5 of 47 bond angle outliers are listed below:

Mol	Chain	Res	Type	Atoms	Z	Observed(°)	Ideal(°)
2	C	802	PGD	C4'-O4'-C1'	-5.59	103.57	109.72
2	A	801	PGD	N3-C2-N1	-5.54	119.00	127.44
2	A	802	PGD	C5-C6-N1	-5.27	116.39	123.59
2	C	802	PGD	N3-C2-N1	-5.14	119.61	127.44
2	C	801	PGD	N3-C2-N1	-5.01	119.82	127.44

There are no chirality outliers.

There are no torsion outliers.

There are no ring outliers.

1 monomer is involved in 2 short contacts:

Mol	Chain	Res	Type	Clashes	Symm-Clashes
2	C	801	PGD	2	0

5.7 Other polymers [i](#)

There are no such residues in this entry.

5.8 Polymer linkage issues [i](#)

There are no chain breaks in this entry.

6 Fit of model and data ⓘ

6.1 Protein, DNA and RNA chains ⓘ

EDS was not executed - this section will therefore be empty.

6.2 Non-standard residues in protein, DNA, RNA chains ⓘ

EDS was not executed - this section will therefore be empty.

6.3 Carbohydrates ⓘ

EDS was not executed - this section will therefore be empty.

6.4 Ligands ⓘ

EDS was not executed - this section will therefore be empty.

6.5 Other polymers ⓘ

EDS was not executed - this section will therefore be empty.