



wwPDB X-ray Structure Validation Summary Report ⓘ

Feb 19, 2016 – 06:12 PM GMT

PDB ID : 2E77
Title : Crystal structure of L-lactate oxidase with pyruvate complex
Authors : Morimoto, Y.
Deposited on : 2007-01-06
Resolution : 1.90 Å(reported)

This is a wwPDB X-ray Structure Validation Summary Report for a publicly released PDB entry.
We welcome your comments at validation@mail.wwpdb.org
A user guide is available at
<http://wwpdb.org/validation/2016/XrayValidationReportHelp>
with specific help available everywhere you see the ⓘ symbol.

The following versions of software and data (see [references ⓘ](#)) were used in the production of this report:

MolProbity : 4.02b-467
Mogul : 1.7.1 (RC1), CSD as537be (2016)
Xtriage (Phenix) : 1.9-1692
EDS : rb-20026982
Percentile statistics : 20151230.v01 (using entries in the PDB archive December 30th 2015)
Refmac : 5.8.0135
CCP4 : 6.5.0
Ideal geometry (proteins) : Engh & Huber (2001)
Ideal geometry (DNA, RNA) : Parkinson et al. (1996)
Validation Pipeline (wwPDB-VP) : rb-20026982

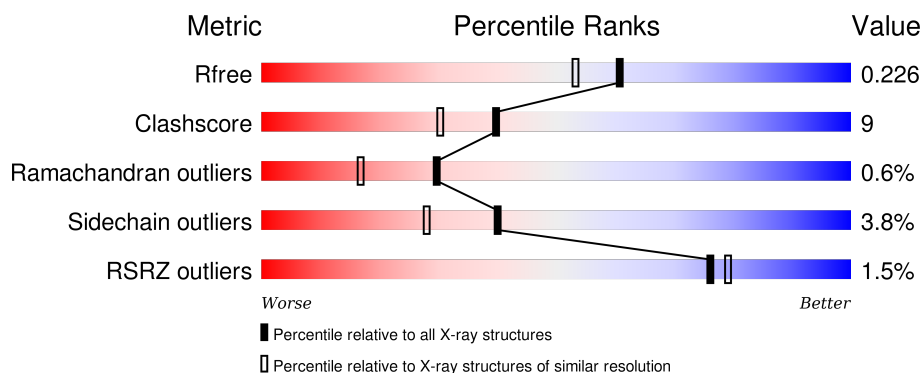
1 Overall quality at a glance ⓘ

The following experimental techniques were used to determine the structure:

X-RAY DIFFRACTION

The reported resolution of this entry is 1.90 Å.

Percentile scores (ranging between 0-100) for global validation metrics of the entry are shown in the following graphic. The table shows the number of entries on which the scores are based.



Metric	Whole archive (#Entries)	Similar resolution (#Entries, resolution range(Å))
R_{free}	91344	4755 (1.90-1.90)
Clashscore	102246	5398 (1.90-1.90)
Ramachandran outliers	100387	5338 (1.90-1.90)
Sidechain outliers	100360	5339 (1.90-1.90)
RSRZ outliers	91569	4766 (1.90-1.90)

The table below summarises the geometric issues observed across the polymeric chains and their fit to the electron density. The red, orange, yellow and green segments on the lower bar indicate the fraction of residues that contain outliers for ≥ 3 , 2, 1 and 0 types of geometric quality criteria. A grey segment represents the fraction of residues that are not modelled. The numeric value for each fraction is indicated below the corresponding segment, with a dot representing fractions $\leq 5\%$. The upper red bar (where present) indicates the fraction of residues that have poor fit to the electron density. The numeric value is given above the bar.

Mol	Chain	Length	Quality of chain
1	A	374	<div> <div>%</div> <div> <div></div> <div>81%</div> <div>11%</div> <div>5%</div> </div> </div>
1	B	374	<div> <div>%</div> <div> <div></div> <div>84%</div> <div>10%</div> <div>5%</div> </div> </div>
1	C	374	<div> <div>3%</div> <div> <div></div> <div>78%</div> <div>14%</div> <div>5%</div> </div> </div>
1	D	374	<div> <div>%</div> <div> <div></div> <div>86%</div> <div>11%</div> <div>5%</div> </div> </div>

2 Entry composition [i](#)

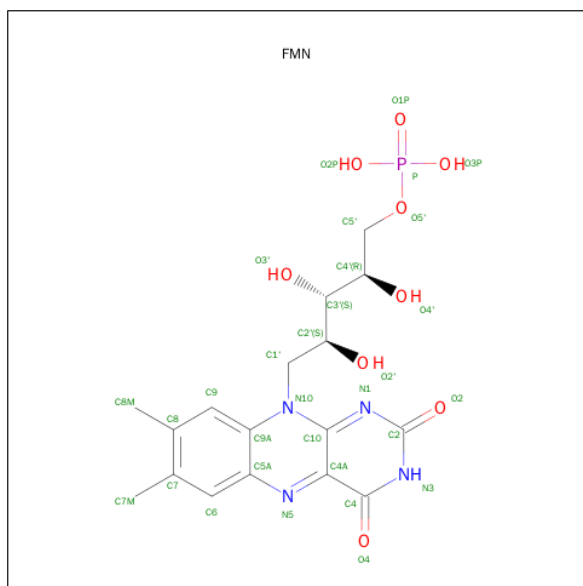
There are 4 unique types of molecules in this entry. The entry contains 12571 atoms, of which 0 are hydrogens and 0 are deuteriums.

In the tables below, the ZeroOcc column contains the number of atoms modelled with zero occupancy, the AltConf column contains the number of residues with at least one atom in alternate conformation and the Trace column contains the number of residues modelled with at most 2 atoms.

- Molecule 1 is a protein called Lactate oxidase.

Mol	Chain	Residues	Atoms					ZeroOcc	AltConf	Trace
1	A	355	Total	C	N	O	S	0	0	0
			2738	1732	475	525	6			
1	B	368	Total	C	N	O	S	0	0	0
			2840	1794	494	545	7			
1	C	350	Total	C	N	O	S	0	0	0
			2700	1708	467	519	6			
1	D	368	Total	C	N	O	S	0	0	0
			2840	1794	494	545	7			

- Molecule 2 is FLAVIN MONONUCLEOTIDE (three-letter code: FMN) (formula: C₁₇H₂₁N₄O₉P).



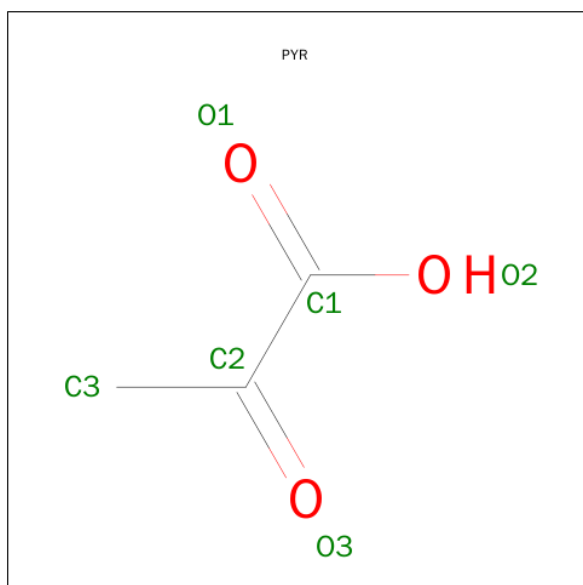
Mol	Chain	Residues	Atoms					ZeroOcc	AltConf
2	A	1	Total	C	N	O	P	0	0
			31	17	4	9	1		
2	B	1	Total	C	N	O	P	0	0
			31	17	4	9	1		

Continued on next page...

Continued from previous page...

Mol	Chain	Residues	Atoms					ZeroOcc	AltConf
2	C	1	Total	C	N	O	P	0	0
			31	17	4	9	1		
2	D	1	Total	C	N	O	P	0	0
			31	17	4	9	1		

- Molecule 3 is PYRUVIC ACID (three-letter code: PYR) (formula: $C_3H_4O_3$).



Mol	Chain	Residues	Atoms			ZeroOcc	AltConf
3	A	1	Total	C	O	0	0
			6	3	3		
3	B	1	Total	C	O	0	0
			6	3	3		
3	D	1	Total	C	O	0	0
			6	3	3		

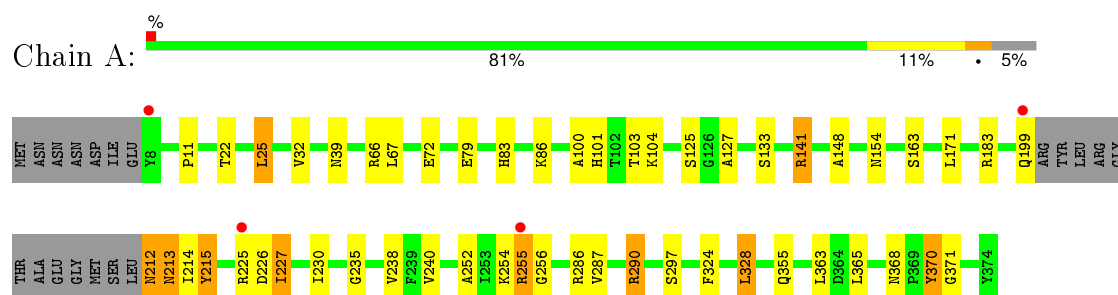
- Molecule 4 is water.

Mol	Chain	Residues	Atoms		ZeroOcc	AltConf
4	A	292	Total	O	0	0
			292	292		
4	B	370	Total	O	0	0
			370	370		
4	C	289	Total	O	0	0
			289	289		
4	D	360	Total	O	0	0
			360	360		

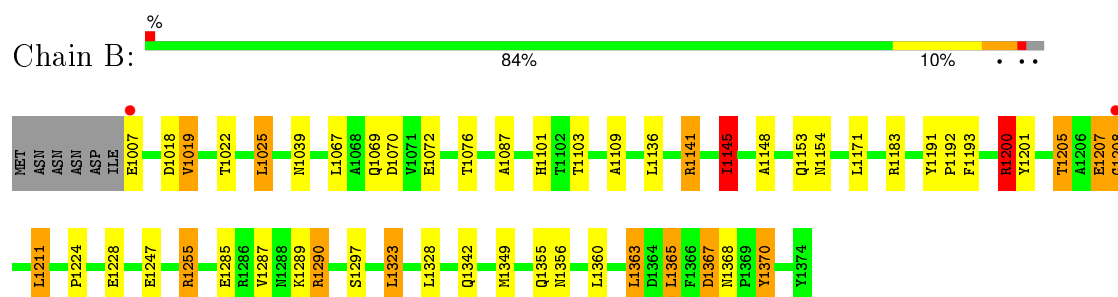
3 Residue-property plots

These plots are drawn for all protein, RNA and DNA chains in the entry. The first graphic for a chain summarises the proportions of errors displayed in the second graphic. The second graphic shows the sequence view annotated by issues in geometry and electron density. Residues are color-coded according to the number of geometric quality criteria for which they contain at least one outlier: green = 0, yellow = 1, orange = 2 and red = 3 or more. A red dot above a residue indicates a poor fit to the electron density ($RSRZ > 2$). Stretches of 2 or more consecutive residues without any outlier are shown as a green connector. Residues present in the sample, but not in the model, are shown in grey.

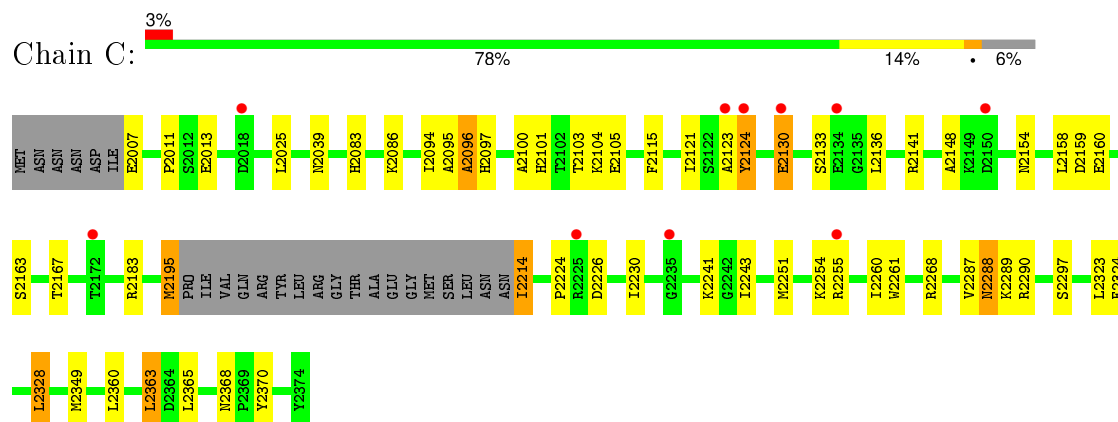
• Molecule 1: Lactate oxidase



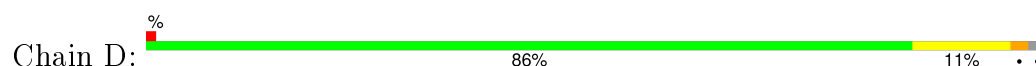
• Molecule 1: Lactate oxidase

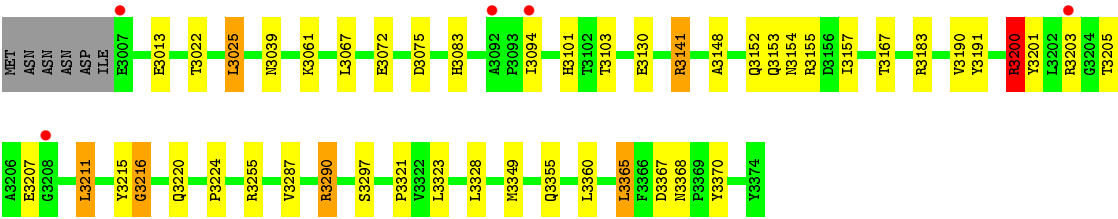


• Molecule 1: Lactate oxidase



• Molecule 1: Lactate oxidase





4 Data and refinement statistics

Property	Value	Source
Space group	C 1 2 1	Depositor
Cell constants a, b, c, α , β , γ	134.84Å 118.57Å 107.24Å 90.00° 121.07° 90.00°	Depositor
Resolution (Å)	37.40 – 1.90 37.39 – 1.90	Depositor EDS
% Data completeness (in resolution range)	99.2 (37.40-1.90) 99.2 (37.39-1.90)	Depositor EDS
R_{merge}	0.05	Depositor
R_{sym}	(Not available)	Depositor
$\langle I/\sigma(I) \rangle$ ¹	3.93 (at 1.89Å)	Xtriage
Refinement program	REFMAC 5.2.0019	Depositor
R, R_{free}	0.176 , 0.227 0.176 , 0.226	Depositor DCC
R_{free} test set	5657 reflections (5.27%)	DCC
Wilson B-factor (Å ²)	23.0	Xtriage
Anisotropy	0.036	Xtriage
Bulk solvent k_{sol} (e/Å ³), B_{sol} (Å ²)	0.35 , 46.3	EDS
Estimated twinning fraction	No twinning to report.	Xtriage
L-test for twinning ²	$\langle L \rangle = 0.49$, $\langle L^2 \rangle = 0.33$	Xtriage
Outliers	0 of 113365 reflections	Xtriage
F_o, F_c correlation	0.96	EDS
Total number of atoms	12571	wwPDB-VP
Average B, all atoms (Å ²)	25.0	wwPDB-VP

Xtriage's analysis on translational NCS is as follows: *The largest off-origin peak in the Patterson function is 3.57% of the height of the origin peak. No significant pseudotranslation is detected.*

¹Intensities estimated from amplitudes.

²Theoretical values of $\langle |L| \rangle$, $\langle L^2 \rangle$ for acentric reflections are 0.5, 0.375 respectively for untwinned datasets, and 0.333, 0.2 for perfectly twinned datasets.

5 Model quality [i](#)

5.1 Standard geometry [i](#)

Bond lengths and bond angles in the following residue types are not validated in this section: FMN, PYR

The Z score for a bond length (or angle) is the number of standard deviations the observed value is removed from the expected value. A bond length (or angle) with $|Z| > 5$ is considered an outlier worth inspection. RMSZ is the root-mean-square of all Z scores of the bond lengths (or angles).

Mol	Chain	Bond lengths		Bond angles	
		RMSZ	# $ Z > 5$	RMSZ	# $ Z > 5$
1	A	0.73	0/2800	0.78	3/3795 (0.1%)
1	B	0.93	4/2904 (0.1%)	0.98	17/3935 (0.4%)
1	C	0.77	0/2761	0.75	1/3740 (0.0%)
1	D	0.87	0/2904	0.95	10/3935 (0.3%)
All	All	0.83	4/11369 (0.0%)	0.87	31/15405 (0.2%)

Chiral center outliers are detected by calculating the chiral volume of a chiral center and verifying if the center is modelled as a planar moiety or with the opposite hand. A planarity outlier is detected by checking planarity of atoms in a peptide group, atoms in a mainchain group or atoms of a sidechain that are expected to be planar.

Mol	Chain	#Chirality outliers	#Planarity outliers
1	A	0	1
1	B	0	1
1	D	0	1
All	All	0	3

All (4) bond length outliers are listed below:

Mol	Chain	Res	Type	Atoms	Z	Observed(Å)	Ideal(Å)
1	B	1285	GLU	CG-CD	7.33	1.62	1.51
1	B	1070	ASP	N-CA	5.66	1.57	1.46
1	B	1285	GLU	CB-CG	5.32	1.62	1.52
1	B	1255	ARG	CG-CD	5.06	1.64	1.51

The worst 5 of 31 bond angle outliers are listed below:

Mol	Chain	Res	Type	Atoms	Z	Observed(°)	Ideal(°)
1	D	3290	ARG	NE-CZ-NH2	-18.76	110.92	120.30
1	D	3290	ARG	NE-CZ-NH1	14.97	127.79	120.30

Continued on next page...

Continued from previous page...

Mol	Chain	Res	Type	Atoms	Z	Observed(°)	Ideal(°)
1	B	1290	ARG	NE-CZ-NH1	13.33	126.96	120.30
1	B	1290	ARG	NE-CZ-NH2	-12.51	114.04	120.30
1	B	1069	GLN	C-N-CA	-10.63	95.11	121.70

There are no chirality outliers.

All (3) planarity outliers are listed below:

Mol	Chain	Res	Type	Group
1	A	235	GLY	Peptide
1	B	1208	GLY	Peptide
1	D	3216	GLY	Peptide

5.2 Too-close contacts

In the following table, the Non-H and H(model) columns list the number of non-hydrogen atoms and hydrogen atoms in the chain respectively. The H(added) column lists the number of hydrogen atoms added and optimized by MolProbity. The Clashes column lists the number of clashes within the asymmetric unit, whereas Symm-Clashes lists symmetry related clashes.

Mol	Chain	Non-H	H(model)	H(added)	Clashes	Symm-Clashes
1	A	2738	0	2668	51	0
1	B	2840	0	2770	46	0
1	C	2700	0	2627	55	0
1	D	2840	0	2770	43	0
2	A	31	0	19	0	0
2	B	31	0	19	0	0
2	C	31	0	19	0	0
2	D	31	0	19	0	0
3	A	6	0	3	0	0
3	B	6	0	3	0	0
3	D	6	0	3	0	0
4	A	292	0	0	10	0
4	B	370	0	0	13	0
4	C	289	0	0	23	0
4	D	360	0	0	11	0
All	All	12571	0	10920	195	0

The all-atom clashscore is defined as the number of clashes found per 1000 atoms (including hydrogen atoms). The all-atom clashscore for this structure is 9.

The worst 5 of 195 close contacts within the same asymmetric unit are listed below, sorted by their clash magnitude.

Atom-1	Atom-2	Interatomic distance (Å)	Clash overlap (Å)
1:C:2123:ALA:HB2	4:C:2716:HOH:O	1.31	1.25
1:B:1356:ASN:HB3	4:B:1826:HOH:O	1.35	1.20
1:A:227:ILE:HB	1:A:255:ARG:NE	1.62	1.14
1:B:1228:GLU:OE2	1:B:1255:ARG:HD2	1.52	1.06
1:D:3287:VAL:O	1:D:3290:ARG:HD3	1.52	1.06

There are no symmetry-related clashes.

5.3 Torsion angles [i](#)

5.3.1 Protein backbone [i](#)

In the following table, the Percentiles column shows the percent Ramachandran outliers of the chain as a percentile score with respect to all X-ray entries followed by that with respect to entries of similar resolution.

The Analysed column shows the number of residues for which the backbone conformation was analysed, and the total number of residues.

Mol	Chain	Analysed	Favoured	Allowed	Outliers	Percentiles	
1	A	351/374 (94%)	339 (97%)	9 (3%)	3 (1%)	21	9
1	B	366/374 (98%)	355 (97%)	9 (2%)	2 (0%)	34	21
1	C	346/374 (92%)	333 (96%)	10 (3%)	3 (1%)	21	9
1	D	366/374 (98%)	355 (97%)	10 (3%)	1 (0%)	46	35
All	All	1429/1496 (96%)	1382 (97%)	38 (3%)	9 (1%)	30	17

5 of 9 Ramachandran outliers are listed below:

Mol	Chain	Res	Type
1	A	213	ASN
1	A	215	TYR
1	A	297	SER
1	B	1297	SER
1	C	2096	ALA

5.3.2 Protein sidechains [i](#)

In the following table, the Percentiles column shows the percent sidechain outliers of the chain as a percentile score with respect to all X-ray entries followed by that with respect to entries of similar resolution.

The Analysed column shows the number of residues for which the sidechain conformation was analysed, and the total number of residues.

Mol	Chain	Analysed	Rotameric	Outliers	Percentiles	
1	A	282/298 (95%)	271 (96%)	11 (4%)	39	27
1	B	292/298 (98%)	281 (96%)	11 (4%)	40	28
1	C	277/298 (93%)	264 (95%)	13 (5%)	32	20
1	D	292/298 (98%)	283 (97%)	9 (3%)	47	37
All	All	1143/1192 (96%)	1099 (96%)	44 (4%)	40	28

5 of 44 residues with a non-rotameric sidechain are listed below:

Mol	Chain	Res	Type
1	B	1342	GLN
1	C	2133	SER
1	D	3203	ARG
1	B	1363	LEU
1	C	2025	LEU

Some sidechains can be flipped to improve hydrogen bonding and reduce clashes. 5 of 41 such sidechains are listed below:

Mol	Chain	Res	Type
1	B	1355	GLN
1	C	2101	HIS
1	D	3187	ASN
1	B	1368	ASN
1	C	2039	ASN

5.3.3 RNA ⓘ

There are no RNA molecules in this entry.

5.4 Non-standard residues in protein, DNA, RNA chains ⓘ

There are no non-standard protein/DNA/RNA residues in this entry.

5.5 Carbohydrates ⓘ

There are no carbohydrates in this entry.

5.6 Ligand geometry

7 ligands are modelled in this entry.

In the following table, the Counts columns list the number of bonds (or angles) for which Mogul statistics could be retrieved, the number of bonds (or angles) that are observed in the model and the number of bonds (or angles) that are defined in the chemical component dictionary. The Link column lists molecule types, if any, to which the group is linked. The Z score for a bond length (or angle) is the number of standard deviations the observed value is removed from the expected value. A bond length (or angle) with $|Z| > 2$ is considered an outlier worth inspection. RMSZ is the root-mean-square of all Z scores of the bond lengths (or angles).

Mol	Type	Chain	Res	Link	Bond lengths			Bond angles		
					Counts	RMSZ	# $ Z > 2$	Counts	RMSZ	# $ Z > 2$
3	PYR	A	4442	-	2,5,5	1.86	1 (50%)	2,6,6	0.43	0
2	FMN	A	4512	-	32,33,33	1.16	4 (12%)	34,50,50	1.99	8 (23%)
3	PYR	B	1442	-	2,5,5	1.79	1 (50%)	2,6,6	0.64	0
2	FMN	B	1512	-	32,33,33	1.63	7 (21%)	34,50,50	2.07	7 (20%)
2	FMN	C	2512	-	32,33,33	1.28	4 (12%)	34,50,50	2.13	6 (17%)
3	PYR	D	3442	-	2,5,5	1.75	1 (50%)	2,6,6	0.65	0
2	FMN	D	3512	-	32,33,33	1.39	4 (12%)	34,50,50	2.13	7 (20%)

In the following table, the Chirals column lists the number of chiral outliers, the number of chiral centers analysed, the number of these observed in the model and the number defined in the chemical component dictionary. Similar counts are reported in the Torsion and Rings columns. '-' means no outliers of that kind were identified.

Mol	Type	Chain	Res	Link	Chirals	Torsions	Rings
3	PYR	A	4442	-	-	0/0/4/4	0/0/0/0
2	FMN	A	4512	-	-	0/18/18/18	0/3/3/3
3	PYR	B	1442	-	-	0/0/4/4	0/0/0/0
2	FMN	B	1512	-	-	0/18/18/18	0/3/3/3
2	FMN	C	2512	-	-	0/18/18/18	0/3/3/3
3	PYR	D	3442	-	-	0/0/4/4	0/0/0/0
2	FMN	D	3512	-	-	0/18/18/18	0/3/3/3

The worst 5 of 22 bond length outliers are listed below:

Mol	Chain	Res	Type	Atoms	Z	Observed(Å)	Ideal(Å)
2	B	1512	FMN	P-O2P	-2.12	1.47	1.54
2	A	4512	FMN	C10-N1	2.07	1.39	1.35
2	B	1512	FMN	C10-N1	2.11	1.39	1.35
2	D	3512	FMN	C5'-C4'	2.14	1.55	1.51
2	A	4512	FMN	C1'-N10	2.18	1.50	1.48

The worst 5 of 28 bond angle outliers are listed below:

Mol	Chain	Res	Type	Atoms	Z	Observed(°)	Ideal(°)
2	D	3512	FMN	N3-C2-N1	-5.32	118.74	127.69
2	C	2512	FMN	N3-C2-N1	-4.50	120.12	127.69
2	B	1512	FMN	N3-C2-N1	-4.32	120.41	127.69
2	A	4512	FMN	N3-C2-N1	-4.12	120.76	127.69
2	C	2512	FMN	C4A-C4-N3	-3.99	118.30	123.52

There are no chirality outliers.

There are no torsion outliers.

There are no ring outliers.

No monomer is involved in short contacts.

5.7 Other polymers [i](#)

There are no such residues in this entry.

5.8 Polymer linkage issues [i](#)

There are no chain breaks in this entry.

6 Fit of model and data [i](#)

6.1 Protein, DNA and RNA chains [i](#)

In the following table, the column labelled ‘#RSRZ> 2’ contains the number (and percentage) of RSRZ outliers, followed by percent RSRZ outliers for the chain as percentile scores relative to all X-ray entries and entries of similar resolution. The OWAB column contains the minimum, median, 95th percentile and maximum values of the occupancy-weighted average B-factor per residue. The column labelled ‘Q< 0.9’ lists the number of (and percentage) of residues with an average occupancy less than 0.9.

Mol	Chain	Analysed	<RSRZ>	#RSRZ>2	OWAB(Å ²)	Q<0.9
1	A	355/374 (94%)	-0.01	4 (1%) 82 84	16, 29, 43, 51	0
1	B	368/374 (98%)	-0.26	2 (0%) 91 92	11, 19, 30, 46	0
1	C	350/374 (93%)	0.10	10 (2%) 55 59	14, 27, 43, 49	0
1	D	368/374 (98%)	-0.27	5 (1%) 78 80	11, 19, 30, 46	0
All	All	1441/1496 (96%)	-0.11	21 (1%) 76 79	11, 23, 40, 51	0

The worst 5 of 21 RSRZ outliers are listed below:

Mol	Chain	Res	Type	RSRZ
1	A	255	ARG	4.7
1	C	2124	TYR	4.1
1	D	3208	GLY	3.9
1	D	3203	ARG	3.8
1	B	1007	GLU	3.4

6.2 Non-standard residues in protein, DNA, RNA chains [i](#)

There are no non-standard protein/DNA/RNA residues in this entry.

6.3 Carbohydrates [i](#)

There are no carbohydrates in this entry.

6.4 Ligands [i](#)

In the following table, the Atoms column lists the number of modelled atoms in the group and the number defined in the chemical component dictionary. LLDF column lists the quality of electron density of the group with respect to its neighbouring residues in protein, DNA or RNA chains. The B-factors column lists the minimum, median, 95th percentile and maximum values of B factors

of atoms in the group. The column labelled 'Q< 0.9' lists the number of atoms with occupancy less than 0.9.

Mol	Type	Chain	Res	Atoms	RSCC	RSR	LLDF	B-factors(\AA^2)	Q<0.9
2	FMN	B	1512	31/31	0.97	0.17	1.40	9,16,19,19	0
3	PYR	D	3442	6/6	0.96	0.14	1.38	19,23,26,27	0
3	PYR	A	4442	6/6	0.95	0.16	1.18	34,35,36,37	0
2	FMN	C	2512	31/31	0.96	0.17	0.53	19,25,28,28	0
2	FMN	D	3512	31/31	0.98	0.14	0.33	9,14,16,16	0
2	FMN	A	4512	31/31	0.96	0.14	0.28	17,23,25,27	0
3	PYR	B	1442	6/6	0.97	0.13	-0.11	25,29,33,33	0

6.5 Other polymers [i](#)

There are no such residues in this entry.