



Full wwPDB X-ray Structure Validation Report ⓘ

Apr 26, 2016 – 02:45 PM EDT

PDB ID : 5E9C
Title : Crystal structure of human heparanase in complex with heparin tetrasaccharide dp4
Authors : Wu, L.; Davies, G.J.
Deposited on : 2015-10-15
Resolution : 1.73 Å(reported)

This is a Full wwPDB X-ray Structure Validation Report for a publicly released PDB entry.
We welcome your comments at validation@mail.wwpdb.org
A user guide is available at
<http://wwpdb.org/validation/2016/XrayValidationReportHelp>
with specific help available everywhere you see the ⓘ symbol.

The following versions of software and data (see [references ⓘ](#)) were used in the production of this report:

MolProbity : 4.02b-467
Mogul : 1.7.1 (RC1), CSD as537be (2016)
Xtriage (Phenix) : 1.9-1692
EDS : rb-20027457
Percentile statistics : 20151230.v01 (using entries in the PDB archive December 30th 2015)
Refmac : 5.8.0135
CCP4 : 6.5.0
Ideal geometry (proteins) : Engh & Huber (2001)
Ideal geometry (DNA, RNA) : Parkinson et al. (1996)
Validation Pipeline (wwPDB-VP) : rb-20027457

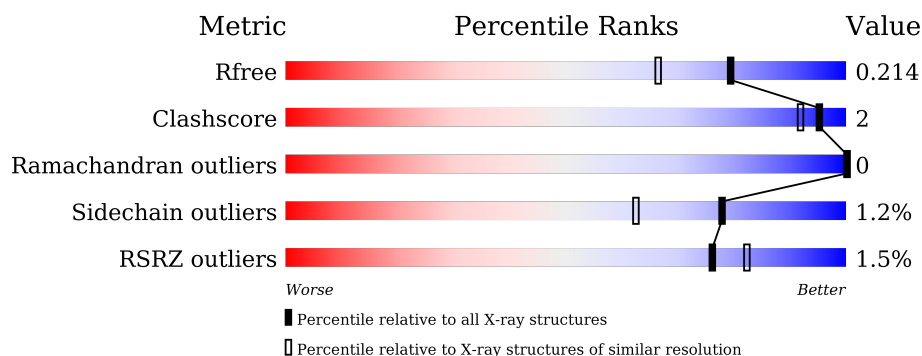
1 Overall quality at a glance

The following experimental techniques were used to determine the structure:

X-RAY DIFFRACTION

The reported resolution of this entry is 1.73 Å.

Percentile scores (ranging between 0-100) for global validation metrics of the entry are shown in the following graphic. The table shows the number of entries on which the scores are based.



Metric	Whole archive (#Entries)	Similar resolution (#Entries, resolution range(Å))
R_{free}	91344	2417 (1.76-1.72)
Clashscore	102246	2570 (1.76-1.72)
Ramachandran outliers	100387	2544 (1.76-1.72)
Sidechain outliers	100360	2544 (1.76-1.72)
RSRZ outliers	91569	2420 (1.76-1.72)

The table below summarises the geometric issues observed across the polymeric chains and their fit to the electron density. The red, orange, yellow and green segments on the lower bar indicate the fraction of residues that contain outliers for ≥ 3 , 2, 1 and 0 types of geometric quality criteria. A grey segment represents the fraction of residues that are not modelled. The numeric value for each fraction is indicated below the corresponding segment, with a dot representing fractions $\leq 5\%$. The upper red bar (where present) indicates the fraction of residues that have poor fit to the electron density. The numeric value is given above the bar.

Mol	Chain	Length	Quality of chain
1	A	389	<div> <div></div> <div>94%</div> <div>5%</div> </div>
2	B	77	<div> <div>3%</div> <div>88%</div> <div>8%</div> </div>

The following table lists non-polymeric compounds, carbohydrate monomers and non-standard residues in protein, DNA, RNA chains that are outliers for geometric or electron-density-fit criteria:

Mol	Type	Chain	Res	Chirality	Geometry	Clashes	Electron density
8	5KV	A	608	-	-	-	X

2 Entry composition

There are 10 unique types of molecules in this entry. The entry contains 3998 atoms, of which 0 are hydrogens and 0 are deuteriums.

In the tables below, the ZeroOcc column contains the number of atoms modelled with zero occupancy, the AltConf column contains the number of residues with at least one atom in alternate conformation and the Trace column contains the number of residues modelled with at most 2 atoms.

- Molecule 1 is a protein called Heparanase.

Mol	Chain	Residues	Atoms					ZeroOcc	AltConf	Trace
1	A	385	Total	C	N	O	S	0	2	0
			3074	1984	524	554	12			

There are 4 discrepancies between the modelled and reference sequences:

Chain	Residue	Modelled	Actual	Comment	Reference
A	155	ASP	-	expression tag	UNP Q9Y251
A	156	PRO	-	expression tag	UNP Q9Y251
A	157	GLY	-	expression tag	UNP Q9Y251
A	307	ARG	LYS	conflict	UNP Q9Y251

- Molecule 2 is a protein called Heparanase.

Mol	Chain	Residues	Atoms				ZeroOcc	AltConf	Trace
2	B	74	Total	C	N	O	0	0	0
			586	383	95	108			

There are 3 discrepancies between the modelled and reference sequences:

Chain	Residue	Modelled	Actual	Comment	Reference
B	33	ASP	-	expression tag	UNP Q9Y251
B	34	PRO	-	expression tag	UNP Q9Y251
B	35	GLY	-	expression tag	UNP Q9Y251

- Molecule 3 is N-ACETYL-D-GLUCOSAMINE (three-letter code: NAG) (formula: C₈H₁₅NO₆).



Mol	Chain	Residues	Atoms				ZeroOcc	AltConf
3	A	1	Total	C	N	O	0	0
			14	8	1	5		
3	A	1	Total	C	N	O	0	0
			14	8	1	5		
3	A	1	Total	C	N	O	0	0
			14	8	1	5		

- Molecule 4 is CHLORIDE ION (three-letter code: CL) (formula: Cl).

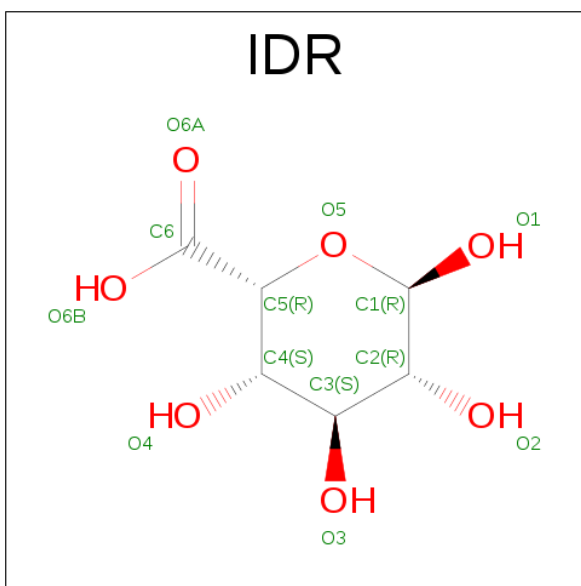
Mol	Chain	Residues	Atoms		ZeroOcc	AltConf
4	A	1	Total	Cl	0	0
			1	1		

- Molecule 5 is SULFATE ION (three-letter code: SO4) (formula: O₄S).



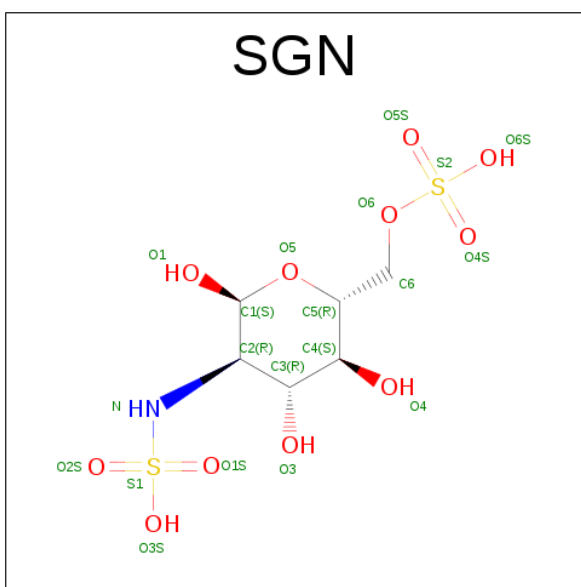
Mol	Chain	Residues	Atoms			ZeroOcc	AltConf
5	A	1	Total	O	S	0	0
			5	4	1		

- Molecule 6 is L-IDURONIC ACID (three-letter code: IDR) (formula: $C_6H_{10}O_7$).



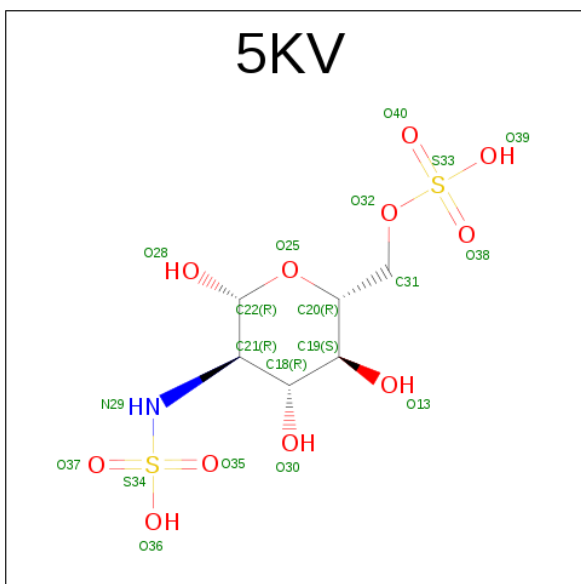
Mol	Chain	Residues	Atoms			ZeroOcc	AltConf
6	A	1	Total	C	O	0	0
			12	6	6		

- Molecule 7 is N,O6-DISULFO-GLUCOSAMINE (three-letter code: SGN) (formula: $C_6H_{13}NO_{11}S_2$).



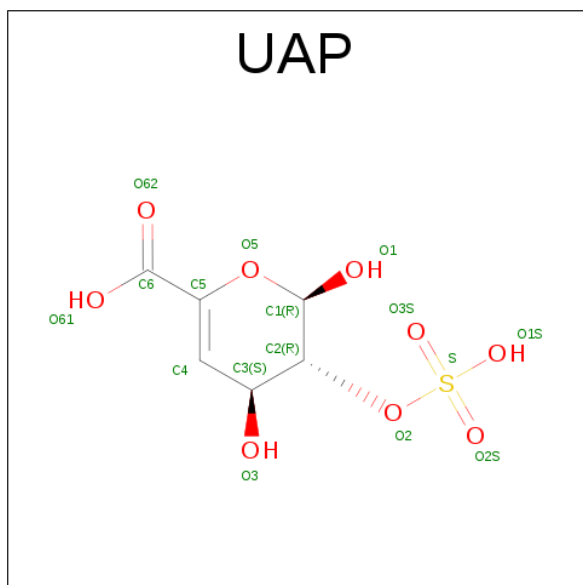
Mol	Chain	Residues	Atoms					ZeroOcc	AltConf
7	A	1	Total	C	N	O	S	0	0
			19	6	1	10	2		

- Molecule 8 is 2-deoxy-6-O-sulfo-2-(sulfoamino)-beta-D-glucopyranose (three-letter code: 5KV) (formula: $C_6H_{13}NO_{11}S_2$).



Mol	Chain	Residues	Atoms					ZeroOcc	AltConf
8	A	1	Total	C	N	O	S	0	0
			20	6	1	11	2		

- Molecule 9 is 4-deoxy-2-O-sulfo-alpha-L-threo-hex-4-enopyranuronic acid (three-letter code: UAP) (formula: $C_6H_8O_9S$).



Mol	Chain	Residues	Atoms				ZeroOcc	AltConf
9	A	1	Total	C	O	S	0	0
			15	6	8	1		

- Molecule 10 is water.

Mol	Chain	Residues	Atoms		ZeroOcc	AltConf
10	A	194	Total	O	0	0
			194	194		
10	B	30	Total	O	0	0
			30	30		

3 Residue-property plots [i](#)


These plots are drawn for all protein, RNA and DNA chains in the entry. The first graphic for a chain summarises the proportions of errors displayed in the second graphic. The second graphic shows the sequence view annotated by issues in geometry and electron density. Residues are color-coded according to the number of geometric quality criteria for which they contain at least one outlier: green = 0, yellow = 1, orange = 2 and red = 3 or more. A red dot above a residue indicates a poor fit to the electron density ($RSRZ > 2$). Stretches of 2 or more consecutive residues without any outlier are shown as a green connector. Residues present in the sample, but not in the model, are shown in grey.

- Molecule 1: Heparanase

Chain A: 



- Molecule 2: Heparanase

Chain B: 



4 Data and refinement statistics

Property	Value	Source
Space group	P 1 21 1	Depositor
Cell constants a, b, c, α , β , γ	46.22Å 71.12Å 78.60Å 90.00° 95.23° 90.00°	Depositor
Resolution (Å)	78.27 – 1.73 52.64 – 1.73	Depositor EDS
% Data completeness (in resolution range)	99.0 (78.27-1.73) 99.0 (52.64-1.73)	Depositor EDS
R_{merge}	0.06	Depositor
R_{sym}	(Not available)	Depositor
$\langle I/\sigma(I) \rangle$ ¹	1.56 (at 1.73Å)	Xtriage
Refinement program	REFMAC 5.8.0131	Depositor
R, R_{free}	0.172 , 0.210 0.181 , 0.214	Depositor DCC
R_{free} test set	2675 reflections (5.37%)	DCC
Wilson B-factor (Å ²)	27.8	Xtriage
Anisotropy	0.433	Xtriage
Bulk solvent k_{sol} (e/Å ³), B_{sol} (Å ²)	0.33 , 40.4	EDS
L-test for twinning ²	$\langle L \rangle = 0.48$, $\langle L^2 \rangle = 0.31$	Xtriage
Estimated twinning fraction	No twinning to report.	Xtriage
F_o, F_c correlation	0.97	EDS
Total number of atoms	3998	wwPDB-VP
Average B, all atoms (Å ²)	36.0	wwPDB-VP

Xtriage's analysis on translational NCS is as follows: *The largest off-origin peak in the Patterson function is 6.34% of the height of the origin peak. No significant pseudotranslation is detected.*

¹Intensities estimated from amplitudes.

²Theoretical values of $\langle |L| \rangle$, $\langle L^2 \rangle$ for acentric reflections are 0.5, 0.375 respectively for untwinned datasets, and 0.333, 0.2 for perfectly twinned datasets.

5 Model quality

5.1 Standard geometry

Bond lengths and bond angles in the following residue types are not validated in this section: NAG, CL, UAP, 5KV, IDR, SO4, SGN

The Z score for a bond length (or angle) is the number of standard deviations the observed value is removed from the expected value. A bond length (or angle) with $|Z| > 5$ is considered an outlier worth inspection. RMSZ is the root-mean-square of all Z scores of the bond lengths (or angles).

Mol	Chain	Bond lengths		Bond angles	
		RMSZ	$\# Z > 5$	RMSZ	$\# Z > 5$
1	A	0.81	1/3148 (0.0%)	0.86	6/4257 (0.1%)
2	B	0.78	0/600	0.89	1/814 (0.1%)
All	All	0.81	1/3748 (0.0%)	0.87	7/5071 (0.1%)

All (1) bond length outliers are listed below:

Mol	Chain	Res	Type	Atoms	Z	Observed(Å)	Ideal(Å)
1	A	221	GLU	CD-OE2	5.32	1.31	1.25

All (7) bond angle outliers are listed below:

Mol	Chain	Res	Type	Atoms	Z	Observed(°)	Ideal(°)
1	A	171	ASP	CB-CG-OD1	5.86	123.58	118.30
1	A	307	ARG	NE-CZ-NH1	5.65	123.13	120.30
1	A	449	ASP	CB-CG-OD1	5.45	123.20	118.30
1	A	307	ARG	NE-CZ-NH2	-5.23	117.69	120.30
1	A	498	LEU	CA-CB-CG	5.16	127.16	115.30
2	B	43	PHE	CB-CG-CD1	5.12	124.39	120.80
1	A	272	ARG	NE-CZ-NH1	5.11	122.85	120.30

There are no chirality outliers.

There are no planarity outliers.

5.2 Too-close contacts

In the following table, the Non-H and H(model) columns list the number of non-hydrogen atoms and hydrogen atoms in the chain respectively. The H(added) column lists the number of hydrogen atoms added and optimized by MolProbity. The Clashes column lists the number of clashes within the asymmetric unit, whereas Symm-Clashes lists symmetry related clashes.

Mol	Chain	Non-H	H(model)	H(added)	Clashes	Symm-Clashes
1	A	3074	0	3103	8	0
2	B	586	0	597	5	0
3	A	42	0	39	0	0
4	A	1	0	0	0	0
5	A	5	0	0	0	0
6	A	12	0	6	1	0
7	A	19	0	9	1	0
8	A	20	0	12	2	0
9	A	15	0	5	0	0
10	A	194	0	0	2	0
10	B	30	0	0	2	0
All	All	3998	0	3771	12	0

The all-atom clashscore is defined as the number of clashes found per 1000 atoms (including hydrogen atoms). The all-atom clashscore for this structure is 2.

All (12) close contacts within the same asymmetric unit are listed below, sorted by their clash magnitude.

Atom-1	Atom-2	Interatomic distance (Å)	Clash overlap (Å)
2:B:46:GLN:HB3	10:B:216:HOH:O	1.70	0.89
2:B:61:ILE:HG12	2:B:92:LEU:HD11	1.75	0.68
1:A:411:LYS:HE3	2:B:87:LEU:O	1.96	0.66
1:A:270:GLN:NE2	8:A:608:5KV:O39	2.35	0.60
1:A:331[B]:GLU:OE1	10:A:701:HOH:O	2.18	0.56
1:A:502[A]:MET:SD	1:A:508:LEU:HD23	2.47	0.55
2:B:46:GLN:CB	10:B:216:HOH:O	2.41	0.51
1:A:270:GLN:HE22	1:A:298:TYR:H	1.63	0.47
1:A:389:GLY:N	7:A:607:SGN:O3S	2.44	0.46
1:A:491:LYS:HE2	10:A:752:HOH:O	2.15	0.46
1:A:182:LEU:HD22	2:B:90:ALA:HB3	2.03	0.41
6:A:606:IDR:H5	8:A:608:5KV:O30	2.20	0.41

There are no symmetry-related clashes.

5.3 Torsion angles ⓘ

5.3.1 Protein backbone ⓘ

In the following table, the Percentiles column shows the percent Ramachandran outliers of the chain as a percentile score with respect to all X-ray entries followed by that with respect to entries of similar resolution.

The Analysed column shows the number of residues for which the backbone conformation was analysed, and the total number of residues.

Mol	Chain	Analysed	Favoured	Allowed	Outliers	Percentiles	
1	A	385/389 (99%)	378 (98%)	7 (2%)	0	100	100
2	B	72/77 (94%)	72 (100%)	0	0	100	100
All	All	457/466 (98%)	450 (98%)	7 (2%)	0	100	100

There are no Ramachandran outliers to report.

5.3.2 Protein sidechains [i](#)

In the following table, the Percentiles column shows the percent sidechain outliers of the chain as a percentile score with respect to all X-ray entries followed by that with respect to entries of similar resolution.

The Analysed column shows the number of residues for which the sidechain conformation was analysed, and the total number of residues.

Mol	Chain	Analysed	Rotameric	Outliers	Percentiles	
1	A	337/338 (100%)	332 (98%)	5 (2%)	72	54
2	B	66/68 (97%)	66 (100%)	0	100	100
All	All	403/406 (99%)	398 (99%)	5 (1%)	78	62

All (5) residues with a non-rotameric sidechain are listed below:

Mol	Chain	Res	Type
1	A	212	SER
1	A	391	TYR
1	A	392	HIS
1	A	465	ARG
1	A	512	MET

Some sidechains can be flipped to improve hydrogen bonding and reduce clashes. All (1) such sidechains are listed below:

Mol	Chain	Res	Type
1	A	270	GLN

5.3.3 RNA [i](#)

There are no RNA molecules in this entry.

5.4 Non-standard residues in protein, DNA, RNA chains [i](#)

There are no non-standard protein/DNA/RNA residues in this entry.

5.5 Carbohydrates [i](#)

There are no carbohydrates in this entry.

5.6 Ligand geometry [i](#)

Of 9 ligands modelled in this entry, 1 is monoatomic - leaving 8 for Mogul analysis.

In the following table, the Counts columns list the number of bonds (or angles) for which Mogul statistics could be retrieved, the number of bonds (or angles) that are observed in the model and the number of bonds (or angles) that are defined in the chemical component dictionary. The Link column lists molecule types, if any, to which the group is linked. The Z score for a bond length (or angle) is the number of standard deviations the observed value is removed from the expected value. A bond length (or angle) with $|Z| > 2$ is considered an outlier worth inspection. RMSZ is the root-mean-square of all Z scores of the bond lengths (or angles).

Mol	Type	Chain	Res	Link	Bond lengths			Bond angles		
					Counts	RMSZ	$\# Z > 2$	Counts	RMSZ	$\# Z > 2$
3	NAG	A	601	1	14,14,15	0.80	0	15,19,21	1.33	2 (13%)
3	NAG	A	602	1	14,14,15	0.66	0	15,19,21	0.99	0
3	NAG	A	603	1	14,14,15	0.71	0	15,19,21	1.98	4 (26%)
5	SO4	A	605	-	4,4,4	0.59	0	6,6,6	0.30	0
6	IDR	A	606	8,7	9,12,13	1.13	1 (11%)	12,17,19	2.47	6 (50%)
7	SGN	A	607	9,6	18,19,20	2.74	4 (22%)	24,29,31	1.46	4 (16%)
8	5KV	A	608	6	19,20,20	2.18	4 (21%)	24,31,31	1.51	4 (16%)
9	UAP	A	609	7	12,15,16	2.16	3 (25%)	11,22,24	1.52	1 (9%)

In the following table, the Chirals column lists the number of chiral outliers, the number of chiral centers analysed, the number of these observed in the model and the number defined in the chemical component dictionary. Similar counts are reported in the Torsion and Rings columns. '-' means no outliers of that kind were identified.

Mol	Type	Chain	Res	Link	Chirals	Torsions	Rings
3	NAG	A	601	1	-	0/6/23/26	0/1/1/1
3	NAG	A	602	1	-	0/6/23/26	0/1/1/1
3	NAG	A	603	1	-	0/6/23/26	0/1/1/1
5	SO4	A	605	-	-	0/0/0/0	0/0/0/0
6	IDR	A	606	8,7	-	0/0/21/24	0/1/1/1
7	SGN	A	607	9,6	-	0/11/28/31	0/1/1/1

Continued on next page...

Continued from previous page...

Mol	Type	Chain	Res	Link	Chirals	Torsions	Rings
8	5KV	A	608	6	-	0/11/31/31	0/1/1/1
9	UAP	A	609	7	-	0/5/22/25	0/1/1/1

All (12) bond length outliers are listed below:

Mol	Chain	Res	Type	Atoms	Z	Observed(Å)	Ideal(Å)
9	A	609	UAP	O2-C2	-3.33	1.42	1.47
9	A	609	UAP	C1-C2	2.01	1.55	1.51
8	A	608	5KV	C21-N29	2.08	1.49	1.47
7	A	607	SGN	C1-C2	2.11	1.55	1.52
6	A	606	IDR	C2-C3	2.56	1.56	1.52
8	A	608	5KV	S34-N29	3.72	1.64	1.60
7	A	607	SGN	S1-N	4.07	1.64	1.60
7	A	607	SGN	O2S-S1	4.51	1.47	1.42
8	A	608	5KV	O35-S34	5.68	1.48	1.42
8	A	608	5KV	O37-S34	5.76	1.48	1.42
9	A	609	UAP	O5-C5	5.92	1.46	1.37
7	A	607	SGN	O1S-S1	9.22	1.52	1.42

All (21) bond angle outliers are listed below:

Mol	Chain	Res	Type	Atoms	Z	Observed(°)	Ideal(°)
8	A	608	5KV	O35-S34-O37	-4.69	107.44	120.14
9	A	609	UAP	C3-C4-C5	-4.13	114.99	121.70
6	A	606	IDR	O3-C3-C4	-3.73	101.95	110.36
3	A	603	NAG	C4-C3-C2	-3.58	105.78	111.34
8	A	608	5KV	C18-C19-C20	-2.58	105.63	110.23
6	A	606	IDR	O5-C1-C2	-2.56	106.81	110.89
7	A	607	SGN	O2S-S1-O1S	-2.46	113.49	120.14
7	A	607	SGN	C3-C4-C5	-2.21	106.29	110.23
7	A	607	SGN	O1S-S1-N	-2.15	105.63	108.63
3	A	601	NAG	C3-C4-C5	-2.09	106.51	110.23
3	A	603	NAG	O5-C5-C4	2.01	113.46	110.13
3	A	601	NAG	C1-O5-C5	2.03	115.13	112.14
8	A	608	5KV	C31-C20-C19	2.32	117.28	112.00
8	A	608	5KV	O13-C19-C20	2.35	115.42	109.23
3	A	603	NAG	O3-C3-C2	2.41	114.54	109.37
6	A	606	IDR	O3-C3-C2	2.45	114.49	110.01
6	A	606	IDR	O4-C4-C5	2.73	115.60	110.40
6	A	606	IDR	O5-C5-C4	3.21	113.75	108.51
7	A	607	SGN	O2S-S1-N	3.35	113.28	108.63
6	A	606	IDR	C1-C2-C3	4.53	115.04	109.55

Continued on next page...

Continued from previous page...

Mol	Chain	Res	Type	Atoms	Z	Observed(°)	Ideal(°)
3	A	603	NAG	C1-O5-C5	4.72	119.08	112.14

There are no chirality outliers.

There are no torsion outliers.

There are no ring outliers.

3 monomers are involved in 3 short contacts:

Mol	Chain	Res	Type	Clashes	Symm-Clashes
6	A	606	IDR	1	0
7	A	607	SGN	1	0
8	A	608	5KV	2	0

5.7 Other polymers [i](#)

There are no such residues in this entry.

5.8 Polymer linkage issues [i](#)

There are no chain breaks in this entry.

6 Fit of model and data [i](#)

6.1 Protein, DNA and RNA chains [i](#)

In the following table, the column labelled ‘#RSRZ> 2’ contains the number (and percentage) of RSRZ outliers, followed by percent RSRZ outliers for the chain as percentile scores relative to all X-ray entries and entries of similar resolution. The OWAB column contains the minimum, median, 95th percentile and maximum values of the occupancy-weighted average B-factor per residue. The column labelled ‘Q< 0.9’ lists the number of (and percentage) of residues with an average occupancy less than 0.9.

Mol	Chain	Analysed	<RSRZ>	#RSRZ>2	OWAB(Å ²)	Q<0.9
1	A	385/389 (98%)	-0.08	5 (1%) 79 85	18, 32, 55, 102	1 (0%)
2	B	74/77 (96%)	0.14	2 (2%) 58 64	21, 35, 54, 97	0
All	All	459/466 (98%)	-0.04	7 (1%) 76 82	18, 32, 55, 102	1 (0%)

All (7) RSRZ outliers are listed below:

Mol	Chain	Res	Type	RSRZ
2	B	36	GLN	6.2
1	A	428	ARG	3.8
1	A	159	LYS	3.7
1	A	543	ILE	3.5
1	A	160	PHE	3.2
1	A	258	PHE	3.0
2	B	109	GLU	2.8

6.2 Non-standard residues in protein, DNA, RNA chains [i](#)

There are no non-standard protein/DNA/RNA residues in this entry.

6.3 Carbohydrates [i](#)

There are no carbohydrates in this entry.

6.4 Ligands [i](#)

In the following table, the Atoms column lists the number of modelled atoms in the group and the number defined in the chemical component dictionary. LLDF column lists the quality of electron density of the group with respect to its neighbouring residues in protein, DNA or RNA chains. The B-factors column lists the minimum, median, 95th percentile and maximum values of B factors

of atoms in the group. The column labelled 'Q< 0.9' lists the number of atoms with occupancy less than 0.9.

Mol	Type	Chain	Res	Atoms	RSCC	RSR	LLDF	B-factors(\AA^2)	Q<0.9
8	5KV	A	608	20/20	0.86	0.27	6.55	48,76,117,121	20
9	UAP	A	609	15/16	0.71	0.28	1.43	57,75,115,117	15
7	SGN	A	607	19/20	0.89	0.18	0.91	43,53,70,71	19
5	SO4	A	605	5/5	0.96	0.12	0.77	40,57,61,66	0
6	IDR	A	606	12/13	0.90	0.11	0.72	30,46,57,58	12
3	NAG	A	602	14/15	0.86	0.13	0.45	50,60,65,67	0
3	NAG	A	603	14/15	0.78	0.17	-	64,75,83,85	0
3	NAG	A	601	14/15	0.80	0.17	-	52,63,71,73	0
4	CL	A	604	1/1	0.89	0.20	-	67,67,67,67	0

6.5 Other polymers [i](#)

There are no such residues in this entry.