



Full wwPDB X-ray Structure Validation Report ⓘ

Feb 1, 2016 – 04:17 PM GMT

PDB ID : 4EDF
Title : Dimeric hUGDH, K94E
Authors : Sennett, N.C.; Wood, Z.A.
Deposited on : 2012-03-27
Resolution : 2.08 Å(reported)

This is a Full wwPDB X-ray Structure Validation Report for a publicly released PDB entry.
We welcome your comments at validation@mail.wwpdb.org
A user guide is available at
<http://wwpdb.org/validation/2016/XrayValidationReportHelp>
with specific help available everywhere you see the ⓘ symbol.

The following versions of software and data (see [references ⓘ](#)) were used in the production of this report:

MolProbity : 4.02b-467
Mogul : 1.7 (RC4), CSD as536be (2015)
Xtriage (Phenix) : 1.9-1692
EDS : rb-20026688
Percentile statistics : 20151230.v01 (using entries in the PDB archive December 30th 2015)
Refmac : 5.8.0135
CCP4 : 6.5.0
Ideal geometry (proteins) : Engh & Huber (2001)
Ideal geometry (DNA, RNA) : Parkinson et al. (1996)
Validation Pipeline (wwPDB-VP) : trunk26865

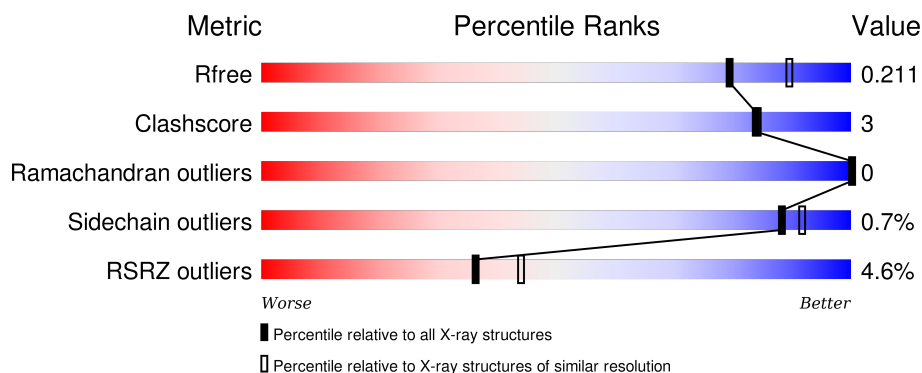
1 Overall quality at a glance

The following experimental techniques were used to determine the structure:

X-RAY DIFFRACTION

The reported resolution of this entry is 2.08 Å.

Percentile scores (ranging between 0-100) for global validation metrics of the entry are shown in the following graphic. The table shows the number of entries on which the scores are based.



Metric	Whole archive (#Entries)	Similar resolution (#Entries, resolution range(Å))
R_{free}	91344	4546 (2.10-2.06)
Clashscore	102246	5101 (2.10-2.06)
Ramachandran outliers	100387	5048 (2.10-2.06)
Sidechain outliers	100360	5049 (2.10-2.06)
RSRZ outliers	91569	4556 (2.10-2.06)

The table below summarises the geometric issues observed across the polymeric chains and their fit to the electron density. The red, orange, yellow and green segments on the lower bar indicate the fraction of residues that contain outliers for ≥ 3 , 2, 1 and 0 types of geometric quality criteria. A grey segment represents the fraction of residues that are not modelled. The numeric value for each fraction is indicated below the corresponding segment, with a dot representing fractions $\leq 5\%$. The upper red bar (where present) indicates the fraction of residues that have poor fit to the electron density. The numeric value is given above the bar.

Mol	Chain	Length	Quality of chain
1	A	494	<div> <div>4%</div> <div>80%7%13%</div> </div>
1	B	494	<div> <div>5%</div> <div>80%7%13%</div> </div>
1	C	494	<div> <div>3%</div> <div>80%6%14%</div> </div>
1	D	494	<div> <div>3%</div> <div>79%7%14%</div> </div>

2 Entry composition

There are 3 unique types of molecules in this entry. The entry contains 13718 atoms, of which 0 are hydrogens and 0 are deuteriums.

In the tables below, the ZeroOcc column contains the number of atoms modelled with zero occupancy, the AltConf column contains the number of residues with at least one atom in alternate conformation and the Trace column contains the number of residues modelled with at most 2 atoms.

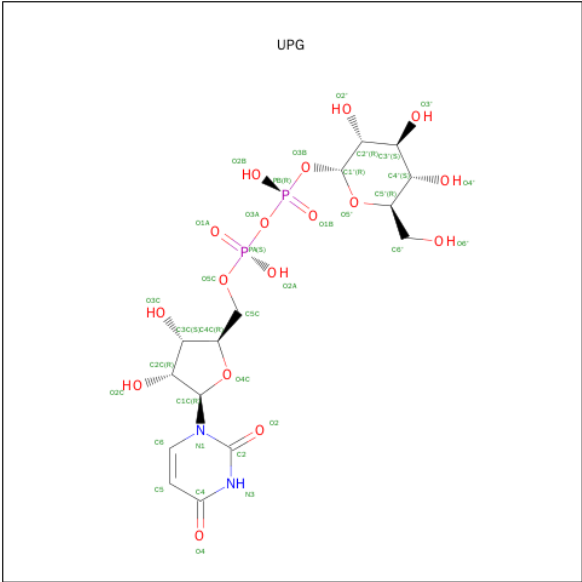
- Molecule 1 is a protein called UDP-glucose 6-dehydrogenase.

Mol	Chain	Residues	Atoms					ZeroOcc	AltConf	Trace
1	A	431	Total	C	N	O	S	0	0	0
			3382	2140	583	640	19			
1	B	431	Total	C	N	O	S	0	0	0
			3382	2140	583	640	19			
1	C	424	Total	C	N	O	S	0	0	0
			3326	2105	575	628	18			
1	D	425	Total	C	N	O	S	0	0	0
			3337	2114	576	629	18			

There are 4 discrepancies between the modelled and reference sequences:

Chain	Residue	Modelled	Actual	Comment	Reference
A	94	GLU	LYS	ENGINEERED MUTATION	UNP O60701
B	94	GLU	LYS	ENGINEERED MUTATION	UNP O60701
C	94	GLU	LYS	ENGINEERED MUTATION	UNP O60701
D	94	GLU	LYS	ENGINEERED MUTATION	UNP O60701

- Molecule 2 is URIDINE-5'-DIPHOSPHATE-GLUCOSE (three-letter code: UPG) (formula: $C_{15}H_{24}N_2O_{17}P_2$).



Mol	Chain	Residues	Atoms					ZeroOcc	AltConf
2	A	1	Total	C	N	O	P	0	0
			36	15	2	17	2		
2	B	1	Total	C	N	O	P	0	0
			36	15	2	17	2		
2	C	1	Total	C	N	O	P	0	0
			36	15	2	17	2		
2	D	1	Total	C	N	O	P	0	0
			36	15	2	17	2		

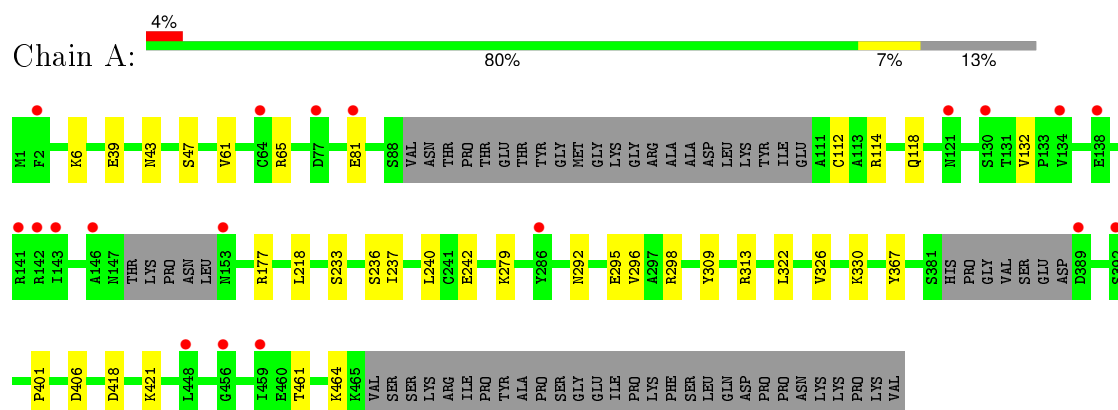
- Molecule 3 is water.

Mol	Chain	Residues	Atoms		ZeroOcc	AltConf
3	A	41	Total	O	0	0
			41	41		
3	B	32	Total	O	0	0
			32	32		
3	C	34	Total	O	0	0
			34	34		
3	D	40	Total	O	0	0
			40	40		

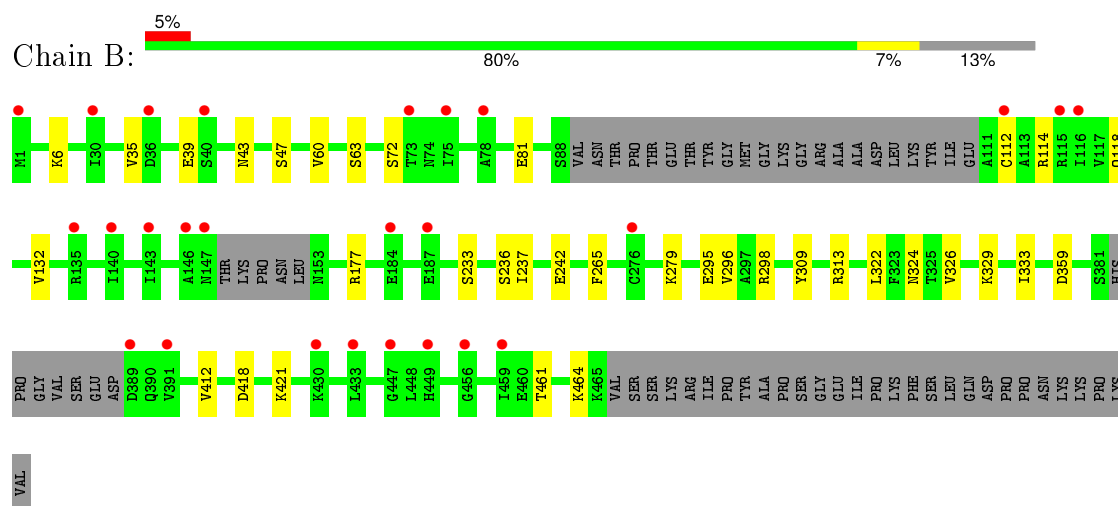
3 Residue-property plots

These plots are drawn for all protein, RNA and DNA chains in the entry. The first graphic for a chain summarises the proportions of errors displayed in the second graphic. The second graphic shows the sequence view annotated by issues in geometry and electron density. Residues are color-coded according to the number of geometric quality criteria for which they contain at least one outlier: green = 0, yellow = 1, orange = 2 and red = 3 or more. A red dot above a residue indicates a poor fit to the electron density ($RSRZ > 2$). Stretches of 2 or more consecutive residues without any outlier are shown as a green connector. Residues present in the sample, but not in the model, are shown in grey.

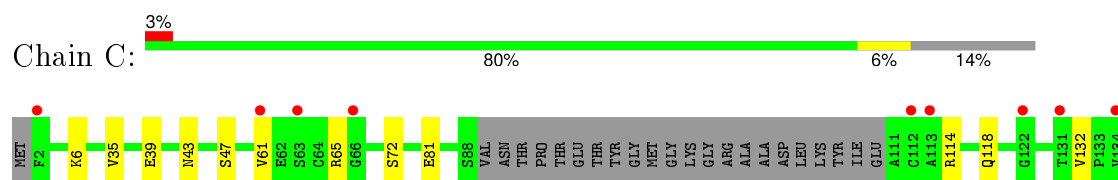
• Molecule 1: UDP-glucose 6-dehydrogenase

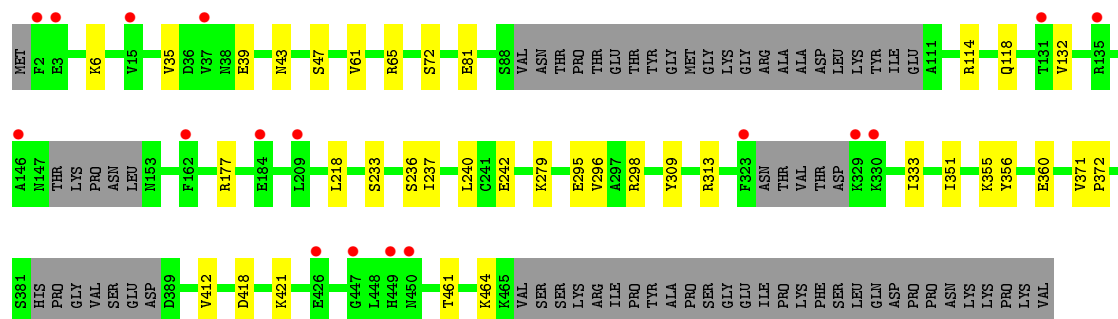


• Molecule 1: UDP-glucose 6-dehydrogenase



• Molecule 1: UDP-glucose 6-dehydrogenase





4 Data and refinement statistics

Property	Value	Source
Space group	P 1 21 1	Depositor
Cell constants a, b, c, α , β , γ	88.66Å 151.07Å 88.74Å 90.00° 107.01° 90.00°	Depositor
Resolution (Å)	43.31 – 2.08 43.31 – 2.08	Depositor EDS
% Data completeness (in resolution range)	98.1 (43.31-2.08) 97.8 (43.31-2.08)	Depositor EDS
R_{merge}	(Not available)	Depositor
R_{sym}	0.08	Depositor
$\langle I/\sigma(I) \rangle$ ¹	2.04 (at 2.08Å)	Xtriage
Refinement program	PHENIX (phenix.refine: dev_987)	Depositor
R, R_{free}	0.187 , 0.237 0.201 , 0.211	Depositor DCC
R_{free} test set	6618 reflections (5.32%)	DCC
Wilson B-factor (Å ²)	34.0	Xtriage
Anisotropy	0.061	Xtriage
Bulk solvent k_{sol} (e/Å ³), B_{sol} (Å ²)	0.35 , 30.3	EDS
Estimated twinning fraction	0.329 for l,-k,h 0.318 for l,-k,h	Xtriage
Reported twinning fraction	0.329 for l,-k,h	Depositor
L-test for twinning ²	$\langle L \rangle = 0.41$, $\langle L^2 \rangle = 0.24$	Xtriage
Outliers	0 of 131093 reflections	Xtriage
F_o, F_c correlation	0.95	EDS
Total number of atoms	13718	wwPDB-VP
Average B, all atoms (Å ²)	41.0	wwPDB-VP

Xtriage's analysis on translational NCS is as follows: *The largest off-origin peak in the Patterson function is 3.86% of the height of the origin peak. No significant pseudotranslation is detected.*

¹ Intensities estimated from amplitudes.

² Theoretical values of $\langle |L| \rangle$, $\langle L^2 \rangle$ for acentric reflections are 0.5, 0.375 respectively for untwinned datasets, and 0.333, 0.2 for perfectly twinned datasets.

5 Model quality [i](#)

5.1 Standard geometry [i](#)

Bond lengths and bond angles in the following residue types are not validated in this section: UPG

The Z score for a bond length (or angle) is the number of standard deviations the observed value is removed from the expected value. A bond length (or angle) with $|Z| > 5$ is considered an outlier worth inspection. RMSZ is the root-mean-square of all Z scores of the bond lengths (or angles).

Mol	Chain	Bond lengths		Bond angles	
		RMSZ	# Z >5	RMSZ	# Z >5
1	A	0.26	0/3440	0.41	0/4650
1	B	0.27	0/3440	0.42	0/4650
1	C	0.24	0/3382	0.40	0/4569
1	D	0.24	0/3394	0.40	0/4585
All	All	0.25	0/13656	0.41	0/18454

There are no bond length outliers.

There are no bond angle outliers.

There are no chirality outliers.

There are no planarity outliers.

5.2 Too-close contacts [i](#)

In the following table, the Non-H and H(model) columns list the number of non-hydrogen atoms and hydrogen atoms in the chain respectively. The H(added) column lists the number of hydrogen atoms added and optimized by MolProbity. The Clashes column lists the number of clashes within the asymmetric unit, whereas Symm-Clashes lists symmetry related clashes.

Mol	Chain	Non-H	H(model)	H(added)	Clashes	Symm-Clashes
1	A	3382	0	3392	22	0
1	B	3382	0	3392	24	0
1	C	3326	0	3337	20	0
1	D	3337	0	3346	24	0
2	A	36	0	22	0	0
2	B	36	0	22	0	0
2	C	36	0	22	0	0
2	D	36	0	22	0	0
3	A	41	0	0	0	0

Continued on next page...

Continued from previous page...

Mol	Chain	Non-H	H(model)	H(added)	Clashes	Symm-Clashes
3	B	32	0	0	1	0
3	C	34	0	0	1	0
3	D	40	0	0	0	0
All	All	13718	0	13555	80	0

The all-atom clashscore is defined as the number of clashes found per 1000 atoms (including hydrogen atoms). The all-atom clashscore for this structure is 3.

All (80) close contacts within the same asymmetric unit are listed below, sorted by their clash magnitude.

Atom-1	Atom-2	Interatomic distance (Å)	Clash overlap (Å)
1:B:296:VAL:HG13	1:C:236:SER:HB2	1.75	0.69
1:D:295:GLU:OE1	1:D:298:ARG:NH1	2.27	0.68
1:C:295:GLU:OE1	1:C:298:ARG:NH1	2.28	0.66
1:B:295:GLU:OE1	1:B:298:ARG:NH1	2.30	0.65
1:C:329:LYS:N	3:C:628:HOH:O	2.30	0.64
1:A:295:GLU:OE1	1:A:298:ARG:NH1	2.32	0.62
1:A:236:SER:HB2	1:D:296:VAL:HG13	1.86	0.58
1:B:39:GLU:HG2	1:B:43:ASN:HD21	1.70	0.56
1:A:39:GLU:HG2	1:A:43:ASN:HD21	1.71	0.56
1:B:329:LYS:HE3	1:D:360:GLU:OE2	2.06	0.56
1:A:296:VAL:HG13	1:D:236:SER:HB2	1.87	0.55
1:C:39:GLU:HG2	1:C:43:ASN:HD21	1.71	0.54
1:D:39:GLU:HG2	1:D:43:ASN:HD21	1.72	0.54
1:A:218:LEU:HD11	1:D:240:LEU:HD23	1.91	0.52
1:B:236:SER:HB2	1:C:296:VAL:HG13	1.91	0.52
1:B:242:GLU:OE1	1:B:313:ARG:NH1	2.41	0.51
1:C:6:LYS:NZ	1:C:81:GLU:OE1	2.36	0.51
1:B:324:ASN:HB2	1:D:356:TYR:CE1	2.46	0.51
1:D:242:GLU:OE1	1:D:313:ARG:NH1	2.40	0.49
1:C:242:GLU:OE1	1:C:313:ARG:NH1	2.41	0.49
1:C:309:TYR:CZ	1:C:313:ARG:HD3	2.47	0.49
1:A:240:LEU:HD23	1:D:218:LEU:HD11	1.96	0.48
1:D:114:ARG:O	1:D:118:GLN:HG2	2.14	0.48
1:B:6:LYS:NZ	1:B:81:GLU:OE1	2.38	0.48
1:A:309:TYR:CZ	1:A:313:ARG:HD3	2.49	0.48
1:C:114:ARG:O	1:C:118:GLN:HG2	2.14	0.48
1:D:309:TYR:CZ	1:D:313:ARG:HD3	2.49	0.47
1:A:61:VAL:O	1:A:65:ARG:HB2	2.15	0.47
1:B:114:ARG:O	1:B:118:GLN:HG2	2.14	0.47
1:A:114:ARG:O	1:A:118:GLN:HG2	2.14	0.47

Continued on next page...

Continued from previous page...

Atom-1	Atom-2	Interatomic distance (Å)	Clash overlap (Å)
1:B:309:TYR:CZ	1:B:313:ARG:HD3	2.50	0.46
1:A:6:LYS:NZ	1:A:81:GLU:OE1	2.38	0.46
1:A:242:GLU:OE1	1:A:313:ARG:NH1	2.41	0.46
1:A:418:ASP:HA	1:A:421:LYS:HE3	1.97	0.46
1:B:418:ASP:HA	1:B:421:LYS:HE3	1.98	0.45
1:C:418:ASP:HA	1:C:421:LYS:HE3	1.98	0.45
1:C:418:ASP:O	1:C:421:LYS:HG2	2.17	0.44
1:D:132:VAL:HG21	1:D:279:LYS:HG2	1.99	0.44
1:D:61:VAL:O	1:D:65:ARG:HB2	2.16	0.44
1:B:461:THR:HG23	1:B:464:LYS:HB3	2.00	0.44
1:A:132:VAL:HG21	1:A:279:LYS:HG2	1.99	0.44
1:D:6:LYS:NZ	1:D:81:GLU:OE1	2.38	0.44
1:D:418:ASP:HA	1:D:421:LYS:HE3	1.98	0.44
1:C:39:GLU:HG2	1:C:43:ASN:ND2	2.33	0.44
1:C:61:VAL:O	1:C:65:ARG:HB2	2.18	0.44
1:A:418:ASP:O	1:A:421:LYS:HG2	2.18	0.43
1:A:39:GLU:HG2	1:A:43:ASN:ND2	2.33	0.43
1:C:242:GLU:CD	1:C:313:ARG:HH12	2.21	0.43
1:B:132:VAL:HG21	1:B:279:LYS:HG2	2.00	0.43
1:C:132:VAL:HG21	1:C:279:LYS:HG2	2.00	0.43
1:C:233:SER:O	1:C:237:ILE:HG12	2.18	0.43
1:A:461:THR:HG23	1:A:464:LYS:HB3	2.01	0.43
1:D:39:GLU:HG2	1:D:43:ASN:ND2	2.34	0.42
1:B:60:VAL:O	1:B:63:SER:OG	2.31	0.42
1:B:39:GLU:HG2	1:B:43:ASN:ND2	2.33	0.42
1:C:461:THR:HG23	1:C:464:LYS:HB3	2.01	0.42
1:A:242:GLU:CD	1:A:313:ARG:HH12	2.22	0.42
1:B:418:ASP:O	1:B:421:LYS:HG2	2.19	0.42
1:D:242:GLU:CD	1:D:313:ARG:HH12	2.22	0.42
1:D:418:ASP:O	1:D:421:LYS:HG2	2.20	0.41
1:D:371:VAL:HA	1:D:372:PRO:HD2	1.93	0.41
1:D:351:ILE:O	1:D:355:LYS:HG3	2.21	0.41
1:D:233:SER:O	1:D:237:ILE:HG12	2.19	0.41
1:D:461:THR:HG23	1:D:464:LYS:HB3	2.01	0.41
1:A:292:ASN:HB3	1:B:359:ASP:OD1	2.20	0.41
1:D:333:ILE:HD13	1:D:412:VAL:HB	2.01	0.41
1:B:242:GLU:CD	1:B:313:ARG:HH12	2.22	0.41
1:C:351:ILE:O	1:C:355:LYS:HG3	2.21	0.41
1:A:233:SER:O	1:A:237:ILE:HG12	2.21	0.41
1:B:333:ILE:HD13	1:B:412:VAL:HB	2.02	0.41
1:B:265:PHE:CE1	1:C:260:ARG:HD2	2.56	0.41

Continued on next page...

Continued from previous page...

Atom-1	Atom-2	Interatomic distance (Å)	Clash overlap (Å)
1:C:35:VAL:HA	1:C:72:SER:O	2.20	0.41
1:B:233:SER:O	1:B:237:ILE:HG12	2.21	0.41
1:A:330:LYS:NZ	1:A:406:ASP:O	2.43	0.41
1:B:35:VAL:HA	1:B:72:SER:O	2.20	0.41
1:B:322:LEU:HD12	1:B:326:VAL:HG12	2.02	0.41
1:B:313:ARG:HD2	3:B:629:HOH:O	2.21	0.40
1:A:322:LEU:HD12	1:A:326:VAL:HG12	2.02	0.40
1:D:35:VAL:HA	1:D:72:SER:O	2.21	0.40
1:A:367:TYR:CZ	1:A:401:PRO:HD3	2.57	0.40

There are no symmetry-related clashes.

5.3 Torsion angles [i](#)

5.3.1 Protein backbone [i](#)

In the following table, the Percentiles column shows the percent Ramachandran outliers of the chain as a percentile score with respect to all X-ray entries followed by that with respect to entries of similar resolution.

The Analysed column shows the number of residues for which the backbone conformation was analysed, and the total number of residues.

Mol	Chain	Analysed	Favoured	Allowed	Outliers	Percentiles	
1	A	423/494 (86%)	414 (98%)	9 (2%)	0	100	100
1	B	423/494 (86%)	414 (98%)	9 (2%)	0	100	100
1	C	414/494 (84%)	406 (98%)	8 (2%)	0	100	100
1	D	415/494 (84%)	406 (98%)	9 (2%)	0	100	100
All	All	1675/1976 (85%)	1640 (98%)	35 (2%)	0	100	100

There are no Ramachandran outliers to report.

5.3.2 Protein sidechains [i](#)

In the following table, the Percentiles column shows the percent sidechain outliers of the chain as a percentile score with respect to all X-ray entries followed by that with respect to entries of similar resolution.

The Analysed column shows the number of residues for which the sidechain conformation was analysed, and the total number of residues.

Mol	Chain	Analysed	Rotameric	Outliers	Percentiles	
1	A	371/426 (87%)	368 (99%)	3 (1%)	86	90
1	B	371/426 (87%)	368 (99%)	3 (1%)	86	90
1	C	364/426 (85%)	362 (100%)	2 (0%)	92	94
1	D	365/426 (86%)	363 (100%)	2 (0%)	92	94
All	All	1471/1704 (86%)	1461 (99%)	10 (1%)	88	92

All (10) residues with a non-rotameric sidechain are listed below:

Mol	Chain	Res	Type
1	A	47	SER
1	A	112	CYS
1	A	177	ARG
1	B	47	SER
1	B	112	CYS
1	B	177	ARG
1	C	47	SER
1	C	177	ARG
1	D	47	SER
1	D	177	ARG

Some sidechains can be flipped to improve hydrogen bonding and reduce clashes. All (12) such sidechains are listed below:

Mol	Chain	Res	Type
1	A	43	ASN
1	A	121	ASN
1	B	43	ASN
1	B	121	ASN
1	B	409	HIS
1	C	43	ASN
1	C	121	ASN
1	C	292	ASN
1	C	409	HIS
1	D	43	ASN
1	D	121	ASN
1	D	292	ASN

5.3.3 RNA ⓘ

There are no RNA molecules in this entry.

5.4 Non-standard residues in protein, DNA, RNA chains ⓘ

There are no non-standard protein/DNA/RNA residues in this entry.

5.5 Carbohydrates ⓘ

There are no carbohydrates in this entry.

5.6 Ligand geometry ⓘ

4 ligands are modelled in this entry.

In the following table, the Counts columns list the number of bonds (or angles) for which Mogul statistics could be retrieved, the number of bonds (or angles) that are observed in the model and the number of bonds (or angles) that are defined in the chemical component dictionary. The Link column lists molecule types, if any, to which the group is linked. The Z score for a bond length (or angle) is the number of standard deviations the observed value is removed from the expected value. A bond length (or angle) with $|Z| > 2$ is considered an outlier worth inspection. RMSZ is the root-mean-square of all Z scores of the bond lengths (or angles).

Mol	Type	Chain	Res	Link	Bond lengths			Bond angles		
					Counts	RMSZ	$\# Z > 2$	Counts	RMSZ	$\# Z > 2$
2	UPG	A	501	-	29,38,38	0.60	0	43,58,58	1.26	1 (2%)
2	UPG	B	501	-	29,38,38	0.58	0	43,58,58	1.28	1 (2%)
2	UPG	C	501	-	29,38,38	0.53	0	43,58,58	1.26	1 (2%)
2	UPG	D	501	-	29,38,38	0.56	0	43,58,58	1.33	3 (6%)

In the following table, the Chirals column lists the number of chiral outliers, the number of chiral centers analysed, the number of these observed in the model and the number defined in the chemical component dictionary. Similar counts are reported in the Torsion and Rings columns. '-' means no outliers of that kind were identified.

Mol	Type	Chain	Res	Link	Chirals	Torsions	Rings
2	UPG	A	501	-	-	0/19/59/59	0/3/3/3
2	UPG	B	501	-	-	0/19/59/59	0/3/3/3
2	UPG	C	501	-	-	0/19/59/59	0/3/3/3
2	UPG	D	501	-	-	0/19/59/59	0/3/3/3

There are no bond length outliers.

All (6) bond angle outliers are listed below:

Mol	Chain	Res	Type	Atoms	Z	Observed(°)	Ideal(°)
2	D	501	UPG	O3A-PA-O5C	-2.01	97.60	102.94
2	D	501	UPG	O2A-PA-O3A	2.15	114.85	105.09
2	A	501	UPG	C4-N3-C2	6.26	120.34	114.14
2	B	501	UPG	C4-N3-C2	6.34	120.43	114.14
2	C	501	UPG	C4-N3-C2	6.46	120.54	114.14
2	D	501	UPG	C4-N3-C2	6.72	120.79	114.14

There are no chirality outliers.

There are no torsion outliers.

There are no ring outliers.

No monomer is involved in short contacts.

5.7 Other polymers [i](#)

There are no such residues in this entry.

5.8 Polymer linkage issues [i](#)

There are no chain breaks in this entry.

6 Fit of model and data ⓘ

6.1 Protein, DNA and RNA chains ⓘ

In the following table, the column labelled ‘#RSRZ> 2’ contains the number (and percentage) of RSRZ outliers, followed by percent RSRZ outliers for the chain as percentile scores relative to all X-ray entries and entries of similar resolution. The OWAB column contains the minimum, median, 95th percentile and maximum values of the occupancy-weighted average B-factor per residue. The column labelled ‘Q< 0.9’ lists the number of (and percentage) of residues with an average occupancy less than 0.9.

Mol	Chain	Analysed	<RSRZ>	#RSRZ>2	OWAB(Å ²)	Q<0.9
1	A	431/494 (87%)	0.42	19 (4%) 38 46	18, 40, 69, 88	0
1	B	431/494 (87%)	0.51	26 (6%) 25 32	18, 40, 67, 88	0
1	C	424/494 (85%)	0.48	17 (4%) 42 50	18, 39, 67, 88	0
1	D	425/494 (86%)	0.39	17 (4%) 42 50	18, 39, 68, 86	0
All	All	1711/1976 (86%)	0.45	79 (4%) 36 44	18, 39, 68, 88	0

All (79) RSRZ outliers are listed below:

Mol	Chain	Res	Type	RSRZ
1	C	146	ALA	7.0
1	B	143	ILE	5.4
1	B	456	GLY	5.2
1	D	146	ALA	5.0
1	D	131	THR	4.9
1	C	2	PHE	4.7
1	B	146	ALA	4.4
1	B	391	VAL	4.1
1	B	78	ALA	4.1
1	D	330	LYS	4.0
1	C	131	THR	4.0
1	B	184	GLU	3.9
1	B	389	ASP	3.8
1	B	40	SER	3.8
1	B	116	ILE	3.6
1	C	409	HIS	3.6
1	A	2	PHE	3.3
1	D	37	VAL	3.3
1	A	134	VAL	3.2
1	D	450	ASN	3.2
1	D	2	PHE	3.2

Continued on next page...

Continued from previous page...

Mol	Chain	Res	Type	RSRZ
1	C	112	CYS	3.1
1	B	115	ARG	3.0
1	B	140	ILE	3.0
1	D	162	PHE	3.0
1	C	141	ARG	2.9
1	C	61	VAL	2.8
1	B	449	HIS	2.8
1	C	330	LYS	2.8
1	A	141	ARG	2.8
1	A	130	SER	2.7
1	C	465	LYS	2.7
1	A	77	ASP	2.7
1	B	1	MET	2.7
1	D	323	PHE	2.6
1	B	187	GLU	2.6
1	C	63	SER	2.6
1	D	15	VAL	2.6
1	C	66	GLY	2.5
1	C	147	ASN	2.5
1	D	209	LEU	2.5
1	D	184	GLU	2.5
1	D	329	LYS	2.4
1	A	81	GLU	2.4
1	B	433	LEU	2.4
1	B	75	ILE	2.4
1	B	447	GLY	2.4
1	A	64	CYS	2.4
1	A	142	ARG	2.3
1	A	459	ILE	2.3
1	D	447	GLY	2.3
1	A	456	GLY	2.3
1	A	153	ASN	2.3
1	C	122	GLY	2.2
1	A	138	GLU	2.2
1	C	449	HIS	2.2
1	D	449	HIS	2.2
1	B	36	ASP	2.2
1	D	426	GLU	2.2
1	B	147	ASN	2.2
1	A	392	SER	2.2
1	D	3	GLU	2.2
1	D	135	ARG	2.1

Continued on next page...

Continued from previous page...

Mol	Chain	Res	Type	RSRZ
1	C	113	ALA	2.1
1	B	135	ARG	2.1
1	B	112	CYS	2.1
1	A	143	ILE	2.1
1	A	448	LEU	2.1
1	B	430	LYS	2.1
1	A	286	TYR	2.1
1	A	389	ASP	2.1
1	B	30	ILE	2.1
1	B	459	ILE	2.1
1	B	73	THR	2.0
1	A	146	ALA	2.0
1	A	121	ASN	2.0
1	C	134	VAL	2.0
1	B	276	CYS	2.0
1	C	206	GLU	2.0

6.2 Non-standard residues in protein, DNA, RNA chains [i](#)

There are no non-standard protein/DNA/RNA residues in this entry.

6.3 Carbohydrates [i](#)

There are no carbohydrates in this entry.

6.4 Ligands [i](#)

In the following table, the Atoms column lists the number of modelled atoms in the group and the number defined in the chemical component dictionary. LLDF column lists the quality of electron density of the group with respect to its neighbouring residues in protein, DNA or RNA chains. The B-factors column lists the minimum, median, 95th percentile and maximum values of B factors of atoms in the group. The column labelled 'Q< 0.9' lists the number of atoms with occupancy less than 0.9.

Mol	Type	Chain	Res	Atoms	RSCC	RSR	LLDF	B-factors(\AA^2)	Q<0.9
2	UPG	A	501	36/36	0.97	0.12	-0.26	15,23,32,36	0
2	UPG	D	501	36/36	0.97	0.12	-0.29	15,24,32,40	0
2	UPG	C	501	36/36	0.97	0.12	-0.41	15,22,33,39	0
2	UPG	B	501	36/36	0.97	0.10	-1.15	15,23,30,33	0

6.5 Other polymers

There are no such residues in this entry.