



Full wwPDB X-ray Structure Validation Report ⓘ

May 15, 2016 – 05:34 AM EDT

PDB ID : 5EDH
Title : human PDE10A, 8-ethyl-5-methyl-2-[2-(2-methyl-5-pyrrolidin-1-yl-1,2,4-triazol-3-yl)ethyl]-[1,2,4]triazolo[1,5-c]pyrimidine, 2.03Å, H3, Rfree=22.7%
Authors : Joseph, C.; Rudolph, M.G.
Deposited on : 2015-10-21
Resolution : 2.03 Å(reported)

This is a Full wwPDB X-ray Structure Validation Report for a publicly released PDB entry.
We welcome your comments at validation@mail.wwpdb.org
A user guide is available at
<http://wwpdb.org/validation/2016/XrayValidationReportHelp>
with specific help available everywhere you see the ⓘ symbol.

The following versions of software and data (see [references ⓘ](#)) were used in the production of this report:

MolProbity : 4.02b-467
Mogul : 1.7.1 (RC1), CSD as537be (2016)
Xtriage (Phenix) : 1.9-1692
EDS : rb-20027457
Percentile statistics : 20151230.v01 (using entries in the PDB archive December 30th 2015)
Refmac : 5.8.0135
CCP4 : 6.5.0
Ideal geometry (proteins) : Engh & Huber (2001)
Ideal geometry (DNA, RNA) : Parkinson et al. (1996)
Validation Pipeline (wwPDB-VP) : rb-20027457

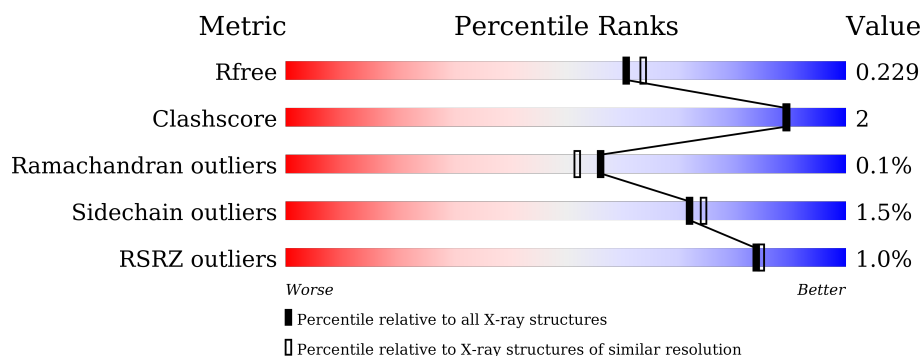
1 Overall quality at a glance

The following experimental techniques were used to determine the structure:

X-RAY DIFFRACTION

The reported resolution of this entry is 2.03 Å.

Percentile scores (ranging between 0-100) for global validation metrics of the entry are shown in the following graphic. The table shows the number of entries on which the scores are based.



Metric	Whole archive (#Entries)	Similar resolution (#Entries, resolution range(Å))
R_{free}	91344	7858 (2.04-2.00)
Clashscore	102246	9060 (2.04-2.00)
Ramachandran outliers	100387	8952 (2.04-2.00)
Sidechain outliers	100360	8951 (2.04-2.00)
RSRZ outliers	91569	7873 (2.04-2.00)

The table below summarises the geometric issues observed across the polymeric chains and their fit to the electron density. The red, orange, yellow and green segments on the lower bar indicate the fraction of residues that contain outliers for ≥ 3 , 2, 1 and 0 types of geometric quality criteria. A grey segment represents the fraction of residues that are not modelled. The numeric value for each fraction is indicated below the corresponding segment, with a dot representing fractions $\leq 5\%$. The upper red bar (where present) indicates the fraction of residues that have poor fit to the electron density. The numeric value is given above the bar.

Mol	Chain	Length	Quality of chain
1	A	316	<div> <div>90%</div> <div>9%</div> <div>.</div> </div>
1	B	316	<div> <div>93%</div> <div>6%</div> <div>.</div> </div>
1	C	316	<div> <div>%</div> <div>91%</div> <div>8%</div> <div>.</div> </div>
1	D	316	<div> <div>3%</div> <div>92%</div> <div>7%</div> <div>.</div> </div>

2 Entry composition

There are 5 unique types of molecules in this entry. The entry contains 10830 atoms, of which 0 are hydrogens and 0 are deuteriums.

In the tables below, the ZeroOcc column contains the number of atoms modelled with zero occupancy, the AltConf column contains the number of residues with at least one atom in alternate conformation and the Trace column contains the number of residues modelled with at most 2 atoms.

- Molecule 1 is a protein called cAMP and cAMP-inhibited cGMP 3',5'-cyclic phosphodiesterase 10A.

Mol	Chain	Residues	Atoms					ZeroOcc	AltConf	Trace
1	A	312	Total	C	N	O	S	0	2	0
			2551	1631	434	462	24			
1	B	315	Total	C	N	O	S	0	2	0
			2560	1635	434	467	24			
1	C	313	Total	C	N	O	S	0	2	0
			2552	1631	435	462	24			
1	D	313	Total	C	N	O	S	0	0	0
			2533	1620	432	457	24			

There are 12 discrepancies between the modelled and reference sequences:

Chain	Residue	Modelled	Actual	Comment	Reference
A	456	ALA	-	expression tag	UNP Q9Y233
A	457	ALA	-	expression tag	UNP Q9Y233
A	771	ALA	-	expression tag	UNP Q9Y233
B	456	ALA	-	expression tag	UNP Q9Y233
B	457	ALA	-	expression tag	UNP Q9Y233
B	771	ALA	-	expression tag	UNP Q9Y233
C	456	ALA	-	expression tag	UNP Q9Y233
C	457	ALA	-	expression tag	UNP Q9Y233
C	771	ALA	-	expression tag	UNP Q9Y233
D	456	ALA	-	expression tag	UNP Q9Y233
D	457	ALA	-	expression tag	UNP Q9Y233
D	771	ALA	-	expression tag	UNP Q9Y233

- Molecule 2 is ZINC ION (three-letter code: ZN) (formula: Zn).

Mol	Chain	Residues	Atoms		ZeroOcc	AltConf
2	B	1	Total	Zn	0	0
			1	1		
2	A	1	Total	Zn	0	0
			1	1		

Continued on next page...

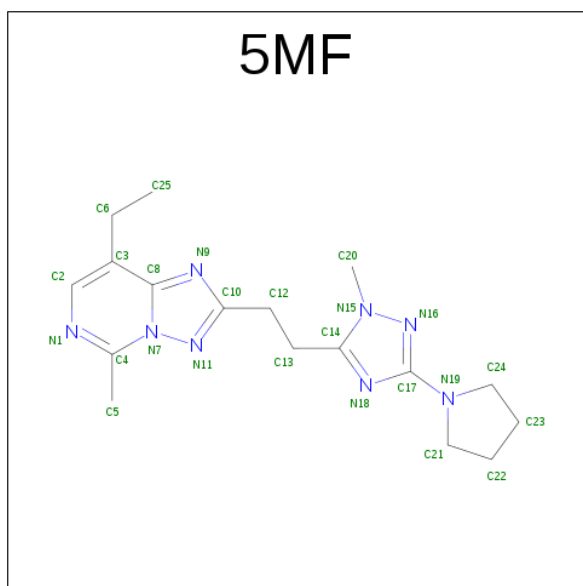
Continued from previous page...

Mol	Chain	Residues	Atoms		ZeroOcc	AltConf
2	D	1	Total	Zn	0	0
			1	1		
2	C	1	Total	Zn	0	0
			1	1		

- Molecule 3 is MAGNESIUM ION (three-letter code: MG) (formula: Mg).

Mol	Chain	Residues	Atoms		ZeroOcc	AltConf
3	B	1	Total	Mg	0	0
			1	1		
3	A	1	Total	Mg	0	0
			1	1		
3	D	1	Total	Mg	0	0
			1	1		
3	C	1	Total	Mg	0	0
			1	1		

- Molecule 4 is 8-ethyl-5-methyl-2-[2-(2-methyl-5-pyrrolidin-1-yl-1,2,4-triazol-3-yl)ethyl]-[1,2,4]triazolo[1,5-c]pyrimidine (three-letter code: 5MF) (formula: C₁₇H₂₄N₈).



Mol	Chain	Residues	Atoms			ZeroOcc	AltConf
4	A	1	Total	C	N	0	0
			25	17	8		
4	B	1	Total	C	N	0	0
			25	17	8		
4	C	1	Total	C	N	0	0
			25	17	8		

Continued on next page...

Continued from previous page...

Mol	Chain	Residues	Atoms			ZeroOcc	AltConf
4	D	1	Total	C	N	0	0
			25	17	8		


- Molecule 5 is water.

Mol	Chain	Residues	Atoms		ZeroOcc	AltConf
5	A	134	Total	O	0	0
			134	134		
5	B	157	Total	O	0	0
			157	157		
5	C	151	Total	O	0	0
			151	151		
5	D	84	Total	O	0	0
			84	84		

3 Residue-property plots [i](#)

These plots are drawn for all protein, RNA and DNA chains in the entry. The first graphic for a chain summarises the proportions of errors displayed in the second graphic. The second graphic shows the sequence view annotated by issues in geometry and electron density. Residues are color-coded according to the number of geometric quality criteria for which they contain at least one outlier: green = 0, yellow = 1, orange = 2 and red = 3 or more. A red dot above a residue indicates a poor fit to the electron density ($\text{RSRZ} > 2$). Stretches of 2 or more consecutive residues without any outlier are shown as a green connector. Residues present in the sample, but not in the model, are shown in grey.

- Molecule 1: cAMP and cAMP-inhibited cGMP 3',5'-cyclic phosphodiesterase 10A

Chain A: 




- Molecule 1: cAMP and cAMP-inhibited cGMP 3',5'-cyclic phosphodiesterase 10A

Chain B: 

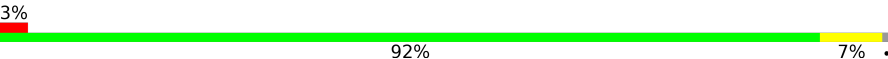


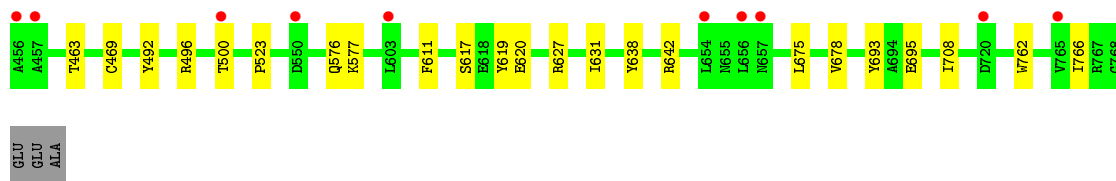
- Molecule 1: cAMP and cAMP-inhibited cGMP 3',5'-cyclic phosphodiesterase 10A

Chain C: 



- Molecule 1: cAMP and cAMP-inhibited cGMP 3',5'-cyclic phosphodiesterase 10A

Chain D: 



4 Data and refinement statistics

Property	Value	Source
Space group	H 3	Depositor
Cell constants a, b, c, α , β , γ	135.40Å 135.40Å 235.34Å 90.00° 90.00° 120.00°	Depositor
Resolution (Å)	43.68 – 2.03 43.68 – 2.03	Depositor EDS
% Data completeness (in resolution range)	96.2 (43.68-2.03) 96.2 (43.68-2.03)	Depositor EDS
R_{merge}	0.07	Depositor
R_{sym}	0.07	Depositor
$\langle I/\sigma(I) \rangle$ ¹	1.40 (at 2.03Å)	Xtriage
Refinement program	REFMAC	Depositor
R, R_{free}	0.186 , 0.227 0.186 , 0.229	Depositor DCC
R_{free} test set	5007 reflections (5.27%)	DCC
Wilson B-factor (Å ²)	34.1	Xtriage
Anisotropy	0.075	Xtriage
Bulk solvent k_{sol} (e/Å ³), B_{sol} (Å ²)	0.34 , 42.0	EDS
L-test for twinning ²	$\langle L \rangle = 0.49$, $\langle L^2 \rangle = 0.32$	Xtriage
Estimated twinning fraction	0.024 for h,-h-k,-l	Xtriage
F_o, F_c correlation	0.96	EDS
Total number of atoms	10830	wwPDB-VP
Average B, all atoms (Å ²)	40.0	wwPDB-VP

Xtriage's analysis on translational NCS is as follows: *The largest off-origin peak in the Patterson function is 2.40% of the height of the origin peak. No significant pseudotranslation is detected.*

¹Intensities estimated from amplitudes.

²Theoretical values of $\langle |L| \rangle$, $\langle L^2 \rangle$ for acentric reflections are 0.5, 0.375 respectively for untwinned datasets, and 0.333, 0.2 for perfectly twinned datasets.

5 Model quality [i](#)

5.1 Standard geometry [i](#)

Bond lengths and bond angles in the following residue types are not validated in this section: MG, 5MF, ZN, CME

The Z score for a bond length (or angle) is the number of standard deviations the observed value is removed from the expected value. A bond length (or angle) with $|Z| > 5$ is considered an outlier worth inspection. RMSZ is the root-mean-square of all Z scores of the bond lengths (or angles).

Mol	Chain	Bond lengths		Bond angles	
		RMSZ	$\# Z > 5$	RMSZ	$\# Z > 5$
1	A	0.58	0/2608	0.69	0/3528
1	B	0.54	0/2617	0.67	0/3540
1	C	0.55	0/2609	0.68	1/3529 (0.0%)
1	D	0.51	0/2584	0.62	0/3497
All	All	0.55	0/10418	0.66	1/14094 (0.0%)

There are no bond length outliers.

All (1) bond angle outliers are listed below:

Mol	Chain	Res	Type	Atoms	Z	Observed(°)	Ideal(°)
1	C	585	LEU	CA-CB-CG	5.05	126.91	115.30

There are no chirality outliers.

There are no planarity outliers.

5.2 Too-close contacts [i](#)

In the following table, the Non-H and H(model) columns list the number of non-hydrogen atoms and hydrogen atoms in the chain respectively. The H(added) column lists the number of hydrogen atoms added and optimized by MolProbity. The Clashes column lists the number of clashes within the asymmetric unit, whereas Symm-Clashes lists symmetry related clashes.

Mol	Chain	Non-H	H(model)	H(added)	Clashes	Symm-Clashes
1	A	2551	0	2527	15	0
1	B	2560	0	2530	11	0
1	C	2552	0	2529	11	0
1	D	2533	0	2509	11	0
2	A	1	0	0	0	0
2	B	1	0	0	0	0

Continued on next page...

Continued from previous page...

Mol	Chain	Non-H	H(model)	H(added)	Clashes	Symm-Clashes
2	C	1	0	0	0	0
2	D	1	0	0	0	0
3	A	1	0	0	0	0
3	B	1	0	0	0	0
3	C	1	0	0	0	0
3	D	1	0	0	0	0
4	A	25	0	0	0	0
4	B	25	0	0	0	0
4	C	25	0	0	0	0
4	D	25	0	0	1	0
5	A	134	0	0	3	0
5	B	157	0	0	1	0
5	C	151	0	0	1	0
5	D	84	0	0	1	0
All	All	10830	0	10095	48	0

The all-atom clashscore is defined as the number of clashes found per 1000 atoms (including hydrogen atoms). The all-atom clashscore for this structure is 2.

All (48) close contacts within the same asymmetric unit are listed below, sorted by their clash magnitude.

Atom-1	Atom-2	Interatomic distance (Å)	Clash overlap (Å)
1:A:469:CYS:SG	5:A:1021:HOH:O	2.31	0.88
1:D:469:CYS:SG	5:D:978:HOH:O	2.46	0.74
1:C:716:ARG:O	1:C:719:LYS:HG3	1.88	0.73
1:B:770:GLU:HG3	1:B:771:ALA:N	2.09	0.66
1:A:727:LEU:HD21	1:A:763:GLU:HG3	1.82	0.60
1:B:497:SER:O	1:B:553:ARG:HD2	2.03	0.58
1:A:646:GLU:HG3	5:A:905:HOH:O	2.03	0.57
1:C:553:ARG:NH1	5:C:903:HOH:O	2.39	0.55
1:C:700:GLY:HA3	1:C:714:MET:O	2.07	0.55
1:C:727:LEU:HD13	1:C:766:ILE:HD12	1.88	0.54
1:A:735:ILE:HB	1:A:736:PRO:HD3	1.89	0.54
1:A:492:TYR:CZ	1:A:496:ARG:HD2	2.44	0.53
1:D:577:LYS:HG2	1:D:708:ILE:HD13	1.90	0.53
1:A:523:PRO:HD2	1:A:695:GLU:HG2	1.91	0.52
1:D:492:TYR:CZ	1:D:496:ARG:HD2	2.45	0.51
1:D:617:SER:HA	1:D:620:GLU:HG2	1.95	0.49
1:A:749:GLU:N	1:A:750:PRO:CD	2.75	0.49
1:D:627:ARG:O	1:D:631:ILE:HG12	2.13	0.48
1:C:477:PHE:HB3	1:C:535:HIS:CE1	2.49	0.48

Continued on next page...

Continued from previous page...

Atom-1	Atom-2	Interatomic distance (Å)	Clash overlap (Å)
1:B:700:GLY:HA3	1:B:714:MET:O	2.13	0.48
1:B:477:PHE:HB3	1:B:535:HIS:CE1	2.49	0.47
1:C:592:GLU:HA	1:C:595:HIS:CD2	2.50	0.47
1:B:727:LEU:HD12	1:B:759:LEU:CD1	2.45	0.47
1:B:677:SER:HB2	1:B:688:THR:HG21	1.96	0.47
1:A:498:CYS:SG	1:A:554:LYS:HG3	2.56	0.46
1:B:638:TYR:CD1	1:B:671:THR:HG21	2.51	0.45
1:C:542:GLN:NE2	1:C:542:GLN:HA	2.31	0.45
1:A:477:PHE:HB3	1:A:535:HIS:CE1	2.51	0.45
1:A:700:GLY:HA3	1:A:714:MET:O	2.16	0.45
1:D:675:LEU:O	1:D:678:VAL:HG22	2.17	0.44
1:C:467:ARG:O	1:C:471:GLU:HB2	2.18	0.43
1:D:523:PRO:HD2	1:D:695:GLU:HG2	1.99	0.43
1:A:730:TYR:HA	1:A:734:ALA:HB3	1.99	0.43
1:D:693:TYR:OH	4:D:803:5MF:N18	2.51	0.43
1:A:542:GLN:NE2	1:A:542:GLN:HA	2.34	0.42
1:D:638:TYR:OH	1:D:642:ARG:HD3	2.19	0.42
1:B:550:ASP:HB3	5:B:1028:HOH:O	2.19	0.42
1:C:510:ARG:HG2	1:C:608:HIS:CE1	2.55	0.42
1:C:624:GLU:OE2	1:C:627:ARG:NH2	2.31	0.41
1:A:462:PHE:CE2	1:A:509:CME:HZ2	2.55	0.41
1:D:611:PHE:HB2	1:D:619:TYR:CE2	2.56	0.41
1:B:493:MET:SD	1:B:535:HIS:HA	2.61	0.41
1:A:743:GLN:NE2	5:A:905:HOH:O	2.48	0.41
1:D:762:TRP:O	1:D:766:ILE:HG13	2.21	0.41
1:B:546:THR:HG23	1:B:547:LEU:HD23	2.03	0.40
1:C:756[B]:ARG:HG2	1:C:756[B]:ARG:HH11	1.86	0.40
1:B:770:GLU:HG3	1:B:771:ALA:H	1.82	0.40
1:A:462:PHE:HE2	1:A:509:CME:HZ2	1.86	0.40

There are no symmetry-related clashes.

5.3 Torsion angles ⓘ

5.3.1 Protein backbone ⓘ

In the following table, the Percentiles column shows the percent Ramachandran outliers of the chain as a percentile score with respect to all X-ray entries followed by that with respect to entries of similar resolution.

The Analysed column shows the number of residues for which the backbone conformation was analysed, and the total number of residues.

Mol	Chain	Analysed	Favoured	Allowed	Outliers	Percentiles	
1	A	311/316 (98%)	305 (98%)	6 (2%)	0	100	100
1	B	314/316 (99%)	307 (98%)	6 (2%)	1 (0%)	46	40
1	C	312/316 (99%)	306 (98%)	6 (2%)	0	100	100
1	D	310/316 (98%)	303 (98%)	7 (2%)	0	100	100
All	All	1247/1264 (99%)	1221 (98%)	25 (2%)	1 (0%)	56	52

All (1) Ramachandran outliers are listed below:

Mol	Chain	Res	Type
1	B	466	VAL

5.3.2 Protein sidechains ⓘ

In the following table, the Percentiles column shows the percent sidechain outliers of the chain as a percentile score with respect to all X-ray entries followed by that with respect to entries of similar resolution.

The Analysed column shows the number of residues for which the sidechain conformation was analysed, and the total number of residues.

Mol	Chain	Analysed	Rotameric	Outliers	Percentiles	
1	A	283/281 (101%)	279 (99%)	4 (1%)	74	76
1	B	283/281 (101%)	277 (98%)	6 (2%)	61	62
1	C	283/281 (101%)	276 (98%)	7 (2%)	55	54
1	D	279/281 (99%)	276 (99%)	3 (1%)	80	82
All	All	1128/1124 (100%)	1108 (98%)	20 (2%)	72	68

All (20) residues with a non-rotameric sidechain are listed below:

Mol	Chain	Res	Type
1	A	471[A]	GLU
1	A	471[B]	GLU
1	A	504	GLU
1	A	550	ASP
1	B	550	ASP
1	B	677	SER
1	B	720[A]	ASP
1	B	720[B]	ASP
1	B	769	GLU
1	B	770	GLU

Continued on next page...

Continued from previous page...

Mol	Chain	Res	Type
1	C	471	GLU
1	C	616	SER
1	C	617	SER
1	C	638	TYR
1	C	760[A]	SER
1	C	760[B]	SER
1	C	769	GLU
1	D	463	THR
1	D	500	THR
1	D	576	GLN

Some sidechains can be flipped to improve hydrogen bonding and reduce clashes. All (20) such sidechains are listed below:

Mol	Chain	Res	Type
1	A	542	GLN
1	A	604	GLN
1	A	621	GLN
1	A	743	GLN
1	A	761	GLN
1	B	542	GLN
1	B	604	GLN
1	B	650	GLN
1	B	724	GLN
1	B	761	GLN
1	C	542	GLN
1	C	604	GLN
1	C	709	GLN
1	C	724	GLN
1	C	743	GLN
1	D	484	ASN
1	D	609	ASN
1	D	726	GLN
1	D	743	GLN
1	D	761	GLN

5.3.3 RNA ⓘ

There are no RNA molecules in this entry.

5.4 Non-standard residues in protein, DNA, RNA chains ⓘ

4 non-standard protein/DNA/RNA residues are modelled in this entry.

In the following table, the Counts columns list the number of bonds (or angles) for which Mogul statistics could be retrieved, the number of bonds (or angles) that are observed in the model and the number of bonds (or angles) that are defined in the chemical component dictionary. The Link column lists molecule types, if any, to which the group is linked. The Z score for a bond length (or angle) is the number of standard deviations the observed value is removed from the expected value. A bond length (or angle) with $|Z| > 2$ is considered an outlier worth inspection. RMSZ is the root-mean-square of all Z scores of the bond lengths (or angles).

Mol	Type	Chain	Res	Link	Bond lengths			Bond angles		
					Counts	RMSZ	# Z > 2	Counts	RMSZ	# Z > 2
1	CME	A	509	1	7,9,10	0.59	0	6,9,11	1.26	1 (16%)
1	CME	B	509	1	7,9,10	0.50	0	6,9,11	1.22	0
1	CME	C	509	1	7,9,10	0.63	0	6,9,11	1.29	1 (16%)
1	CME	D	509	1	7,9,10	0.63	0	6,9,11	1.16	1 (16%)

In the following table, the Chirals column lists the number of chiral outliers, the number of chiral centers analysed, the number of these observed in the model and the number defined in the chemical component dictionary. Similar counts are reported in the Torsion and Rings columns. '-' means no outliers of that kind were identified.

Mol	Type	Chain	Res	Link	Chirals	Torsions	Rings
1	CME	A	509	1	-	0/5/8/10	0/0/0/0
1	CME	B	509	1	-	0/5/8/10	0/0/0/0
1	CME	C	509	1	-	0/5/8/10	0/0/0/0
1	CME	D	509	1	-	0/5/8/10	0/0/0/0

There are no bond length outliers.

All (3) bond angle outliers are listed below:

Mol	Chain	Res	Type	Atoms	Z	Observed(°)	Ideal(°)
1	A	509	CME	O-C-CA	-2.24	119.71	125.72
1	D	509	CME	O-C-CA	-2.15	119.95	125.72
1	C	509	CME	O-C-CA	-2.09	120.11	125.72

There are no chirality outliers.

There are no torsion outliers.

There are no ring outliers.

1 monomer is involved in 2 short contacts:

Mol	Chain	Res	Type	Clashes	Symm-Clashes
1	A	509	CME	2	0

5.5 Carbohydrates [i](#)

There are no carbohydrates in this entry.

5.6 Ligand geometry [i](#)

Of 12 ligands modelled in this entry, 8 are monoatomic - leaving 4 for Mogul analysis.

In the following table, the Counts columns list the number of bonds (or angles) for which Mogul statistics could be retrieved, the number of bonds (or angles) that are observed in the model and the number of bonds (or angles) that are defined in the chemical component dictionary. The Link column lists molecule types, if any, to which the group is linked. The Z score for a bond length (or angle) is the number of standard deviations the observed value is removed from the expected value. A bond length (or angle) with $|Z| > 2$ is considered an outlier worth inspection. RMSZ is the root-mean-square of all Z scores of the bond lengths (or angles).

Mol	Type	Chain	Res	Link	Bond lengths			Bond angles		
					Counts	RMSZ	# $ Z > 2$	Counts	RMSZ	# $ Z > 2$
4	5MF	A	803	-	19,28,28	1.66	2 (10%)	13,40,40	1.28	2 (15%)
4	5MF	B	803	-	19,28,28	1.45	3 (15%)	13,40,40	1.08	1 (7%)
4	5MF	C	803	-	19,28,28	2.16	6 (31%)	13,40,40	1.12	1 (7%)
4	5MF	D	803	-	19,28,28	2.18	6 (31%)	13,40,40	0.81	0

In the following table, the Chirals column lists the number of chiral outliers, the number of chiral centers analysed, the number of these observed in the model and the number defined in the chemical component dictionary. Similar counts are reported in the Torsion and Rings columns. '-' means no outliers of that kind were identified.

Mol	Type	Chain	Res	Link	Chirals	Torsions	Rings
4	5MF	A	803	-	-	0/7/18/18	0/4/4/4
4	5MF	B	803	-	-	0/7/18/18	0/4/4/4
4	5MF	C	803	-	-	0/7/18/18	0/4/4/4
4	5MF	D	803	-	-	0/7/18/18	0/4/4/4

All (17) bond length outliers are listed below:

Mol	Chain	Res	Type	Atoms	Z	Observed(Å)	Ideal(Å)
4	B	803	5MF	C8-N9	-2.01	1.31	1.33
4	D	803	5MF	C10-N11	2.25	1.35	1.33

Continued on next page...

Continued from previous page...

Mol	Chain	Res	Type	Atoms	Z	Observed(Å)	Ideal(Å)
4	D	803	5MF	C8-N9	2.26	1.35	1.33
4	C	803	5MF	C17-N19	2.37	1.40	1.35
4	D	803	5MF	C2-N1	2.39	1.39	1.34
4	D	803	5MF	C14-N15	2.57	1.40	1.34
4	B	803	5MF	C17-N18	2.67	1.37	1.34
4	C	803	5MF	C14-N15	2.93	1.41	1.34
4	D	803	5MF	C17-N19	3.02	1.41	1.35
4	B	803	5MF	C20-N15	3.18	1.51	1.47
4	C	803	5MF	C10-N11	3.29	1.35	1.33
4	A	803	5MF	N16-N15	3.77	1.41	1.37
4	C	803	5MF	C8-N9	3.81	1.36	1.33
4	C	803	5MF	C20-N15	4.21	1.52	1.47
4	C	803	5MF	C17-N18	4.72	1.40	1.34
4	A	803	5MF	C17-N18	5.05	1.40	1.34
4	D	803	5MF	C17-N18	6.98	1.43	1.34

All (4) bond angle outliers are listed below:

Mol	Chain	Res	Type	Atoms	Z	Observed(°)	Ideal(°)
4	C	803	5MF	C17-N18-C14	-2.69	103.12	104.18
4	A	803	5MF	C25-C6-C3	-2.43	105.59	115.02
4	B	803	5MF	C5-C4-N7	2.11	121.03	116.19
4	A	803	5MF	C20-N15-N16	2.33	122.05	118.04

There are no chirality outliers.

There are no torsion outliers.

There are no ring outliers.

1 monomer is involved in 1 short contact:

Mol	Chain	Res	Type	Clashes	Symm-Clashes
4	D	803	5MF	1	0

5.7 Other polymers [i](#)

There are no such residues in this entry.

5.8 Polymer linkage issues [i](#)

There are no chain breaks in this entry.

6 Fit of model and data ⓘ

6.1 Protein, DNA and RNA chains ⓘ

In the following table, the column labelled ‘#RSRZ> 2’ contains the number (and percentage) of RSRZ outliers, followed by percent RSRZ outliers for the chain as percentile scores relative to all X-ray entries and entries of similar resolution. The OWAB column contains the minimum, median, 95th percentile and maximum values of the occupancy-weighted average B-factor per residue. The column labelled ‘Q< 0.9’ lists the number of (and percentage) of residues with an average occupancy less than 0.9.

Mol	Chain	Analysed	<RSRZ>	#RSRZ>2	OWAB(Å ²)	Q<0.9
1	A	311/316 (98%)	-0.27	0 100 100	25, 35, 60, 80	0
1	B	314/316 (99%)	-0.21	1 (0%) 94 94	23, 34, 61, 80	0
1	C	312/316 (98%)	-0.48	2 (0%) 90 91	25, 35, 59, 80	0
1	D	312/316 (98%)	-0.15	10 (3%) 51 53	32, 46, 68, 77	0
All	All	1249/1264 (98%)	-0.28	13 (1%) 84 85	23, 39, 63, 80	0

All (13) RSRZ outliers are listed below:

Mol	Chain	Res	Type	RSRZ
1	B	771	ALA	4.6
1	D	457	ALA	3.9
1	D	654	LEU	3.1
1	D	456	ALA	3.0
1	D	720	ASP	2.8
1	C	769	GLU	2.5
1	D	765	VAL	2.4
1	D	500	THR	2.3
1	D	603	LEU	2.3
1	D	657	ASN	2.2
1	D	656	LEU	2.2
1	D	550	ASP	2.1
1	C	768	GLY	2.0

6.2 Non-standard residues in protein, DNA, RNA chains ⓘ

In the following table, the Atoms column lists the number of modelled atoms in the group and the number defined in the chemical component dictionary. LLDF column lists the quality of electron density of the group with respect to its neighbouring residues in protein, DNA or RNA chains. The B-factors column lists the minimum, median, 95th percentile and maximum values of B factors of atoms in the group. The column labelled ‘Q< 0.9’ lists the number of atoms with occupancy

less than 0.9.

Mol	Type	Chain	Res	Atoms	RSCC	RSR	LLDF	B-factors(\AA^2)	Q<0.9
1	CME	B	509	10/11	0.91	0.14	-	38,49,80,80	0
1	CME	C	509	10/11	0.91	0.12	-	37,44,73,74	0
1	CME	A	509	10/11	0.92	0.12	-	42,52,80,80	0
1	CME	D	509	10/11	0.86	0.17	-	44,60,80,80	0

6.3 Carbohydrates [i](#)

There are no carbohydrates in this entry.

6.4 Ligands [i](#)

In the following table, the Atoms column lists the number of modelled atoms in the group and the number defined in the chemical component dictionary. LLDF column lists the quality of electron density of the group with respect to its neighbouring residues in protein, DNA or RNA chains. The B-factors column lists the minimum, median, 95th percentile and maximum values of B factors of atoms in the group. The column labelled 'Q< 0.9' lists the number of atoms with occupancy less than 0.9.

Mol	Type	Chain	Res	Atoms	RSCC	RSR	LLDF	B-factors(\AA^2)	Q<0.9
3	MG	C	802	1/1	1.00	0.10	1.22	26,26,26,26	0
3	MG	B	802	1/1	0.99	0.13	1.14	25,25,25,25	0
4	5MF	C	803	25/25	0.97	0.11	0.26	28,31,34,38	0
2	ZN	C	801	1/1	1.00	0.09	0.09	31,31,31,31	0
4	5MF	A	803	25/25	0.98	0.10	-0.15	28,30,35,39	0
4	5MF	B	803	25/25	0.96	0.11	-0.17	27,30,32,38	0
4	5MF	D	803	25/25	0.97	0.10	-0.24	35,37,42,46	0
2	ZN	B	801	1/1	1.00	0.12	-0.47	28,28,28,28	0
2	ZN	A	801	1/1	1.00	0.11	-0.49	31,31,31,31	0
2	ZN	D	801	1/1	0.99	0.08	-0.75	39,39,39,39	0
3	MG	A	802	1/1	0.98	0.08	-1.71	27,27,27,27	0
3	MG	D	802	1/1	0.99	0.05	-4.54	40,40,40,40	0

6.5 Other polymers [i](#)

There are no such residues in this entry.