



# Full wwPDB X-ray Structure Validation Report ⓘ

Feb 1, 2016 – 08:22 AM GMT

PDB ID : 3EFJ  
Title : Structure of c-Met with pyrimidone inhibitor 7  
Authors : D'Angelo, N.; Bellon, S.; Whittington, D.  
Deposited on : 2008-09-09  
Resolution : 2.60 Å(reported)

This is a Full wwPDB X-ray Structure Validation Report for a publicly released PDB entry.  
We welcome your comments at [validation@mail.wwpdb.org](mailto:validation@mail.wwpdb.org)  
A user guide is available at  
<http://wwpdb.org/validation/2016/XrayValidationReportHelp>  
with specific help available everywhere you see the ⓘ symbol.

---

The following versions of software and data (see [references ⓘ](#)) were used in the production of this report:

MolProbity : 4.02b-467  
Mogul : 1.7 (RC4), CSD as536be (2015)  
Xtriage (Phenix) : 1.9-1692  
EDS : rb-20026688  
Percentile statistics : 20151230.v01 (using entries in the PDB archive December 30th 2015)  
Refmac : 5.8.0135  
CCP4 : 6.5.0  
Ideal geometry (proteins) : Engh & Huber (2001)  
Ideal geometry (DNA, RNA) : Parkinson et al. (1996)  
Validation Pipeline (wwPDB-VP) : trunk26865

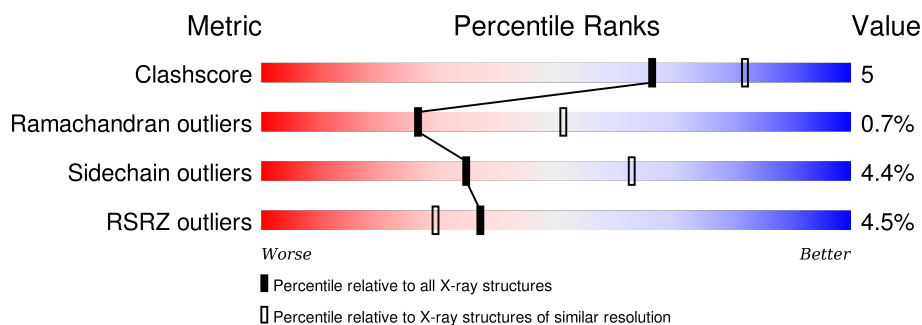
# 1 Overall quality at a glance

The following experimental techniques were used to determine the structure:

## *X-RAY DIFFRACTION*

The reported resolution of this entry is 2.60 Å.

Percentile scores (ranging between 0-100) for global validation metrics of the entry are shown in the following graphic. The table shows the number of entries on which the scores are based.



Metric	Whole archive (#Entries)	Similar resolution (#Entries, resolution range(Å))
Clashscore	102246	2679 (2.60-2.60)
Ramachandran outliers	100387	2635 (2.60-2.60)
Sidechain outliers	100360	2635 (2.60-2.60)
RSRZ outliers	91569	2334 (2.60-2.60)

The table below summarises the geometric issues observed across the polymeric chains and their fit to the electron density. The red, orange, yellow and green segments on the lower bar indicate the fraction of residues that contain outliers for  $\geq 3$ , 2, 1 and 0 types of geometric quality criteria. A grey segment represents the fraction of residues that are not modelled. The numeric value for each fraction is indicated below the corresponding segment, with a dot representing fractions  $\leq 5\%$ . The upper red bar (where present) indicates the fraction of residues that have poor fit to the electron density. The numeric value is given above the bar.

Mol	Chain	Length	Quality of chain
1	A	310	<div> <div>3%</div> <div> <div></div> <div>75%</div> <div>13%</div> <div>11%</div> </div> </div>
1	B	310	<div> <div>5%</div> <div> <div></div> <div>76%</div> <div>12%</div> <div>11%</div> </div> </div>

## 2 Entry composition

There are 3 unique types of molecules in this entry. The entry contains 4474 atoms, of which 0 are hydrogens and 0 are deuteriums.

In the tables below, the ZeroOcc column contains the number of atoms modelled with zero occupancy, the AltConf column contains the number of residues with at least one atom in alternate conformation and the Trace column contains the number of residues modelled with at most 2 atoms.

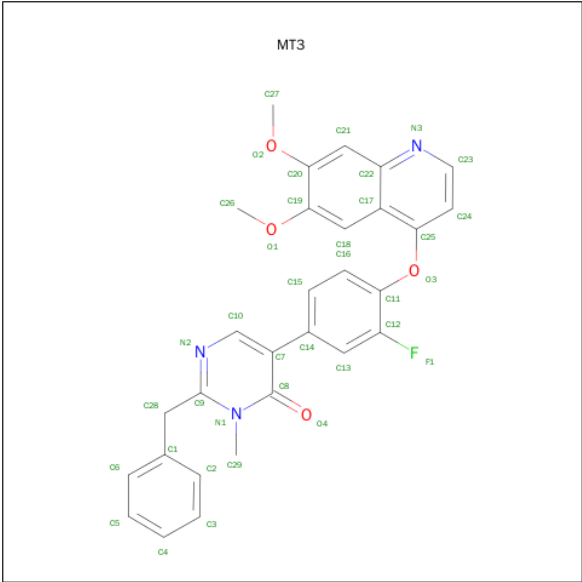
- Molecule 1 is a protein called Hepatocyte growth factor receptor.

Mol	Chain	Residues	Atoms					ZeroOcc	AltConf	Trace
1	A	276	Total	C	N	O	S	0	0	0
			2166	1402	364	386	14			
1	B	275	Total	C	N	O	S	0	0	0
			2152	1392	366	380	14			

There are 14 discrepancies between the modelled and reference sequences:

Chain	Residue	Modelled	Actual	Comment	Reference
A	1047	MET	-	INITIATING METHIONINE	UNP P08581
A	1272	LEU	VAL	ENGINEERED	UNP P08581
A	1352	HIS	-	EXPRESSION TAG	UNP P08581
A	1353	HIS	-	EXPRESSION TAG	UNP P08581
A	1354	HIS	-	EXPRESSION TAG	UNP P08581
A	1355	HIS	-	EXPRESSION TAG	UNP P08581
A	1356	HIS	-	EXPRESSION TAG	UNP P08581
B	1047	MET	-	INITIATING METHIONINE	UNP P08581
B	1272	LEU	VAL	ENGINEERED	UNP P08581
B	1352	HIS	-	EXPRESSION TAG	UNP P08581
B	1353	HIS	-	EXPRESSION TAG	UNP P08581
B	1354	HIS	-	EXPRESSION TAG	UNP P08581
B	1355	HIS	-	EXPRESSION TAG	UNP P08581
B	1356	HIS	-	EXPRESSION TAG	UNP P08581

- Molecule 2 is 2-BENZYL-5-{4-[(6,7-DIMETHOXYQUINOLIN-4-YL)OXY]-3-FLUOROPHENYL}-3-METHYLPYRIMIDIN-4(3H)-ONE (three-letter code: MT3) (formula: C<sub>29</sub>H<sub>24</sub>FN<sub>3</sub>O<sub>4</sub>).



Mol	Chain	Residues	Atoms					ZeroOcc	AltConf
2	A	1	Total	C	F	N	O	0	0
			37	29	1	3	4		
2	B	1	Total	C	F	N	O	0	0
			37	29	1	3	4		

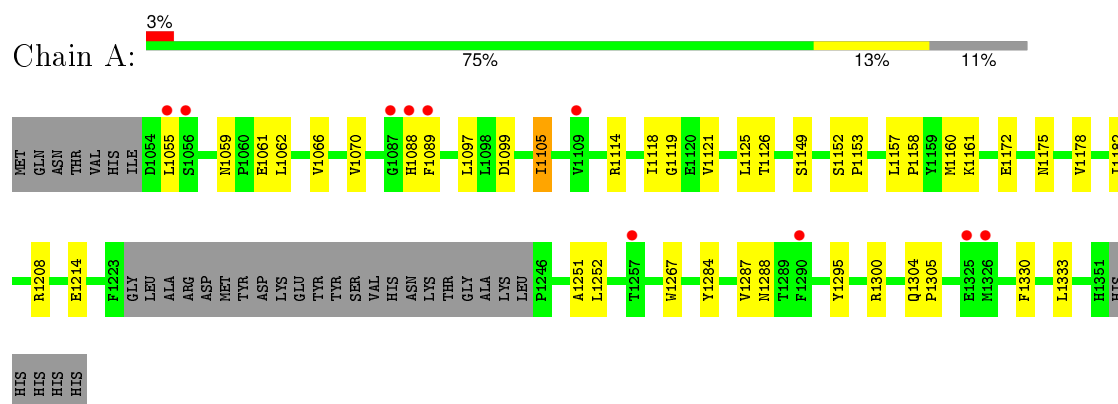
- Molecule 3 is water.

Mol	Chain	Residues	Atoms		ZeroOcc	AltConf
3	A	41	Total	O	0	0
			41	41		
3	B	41	Total	O	0	0
			41	41		

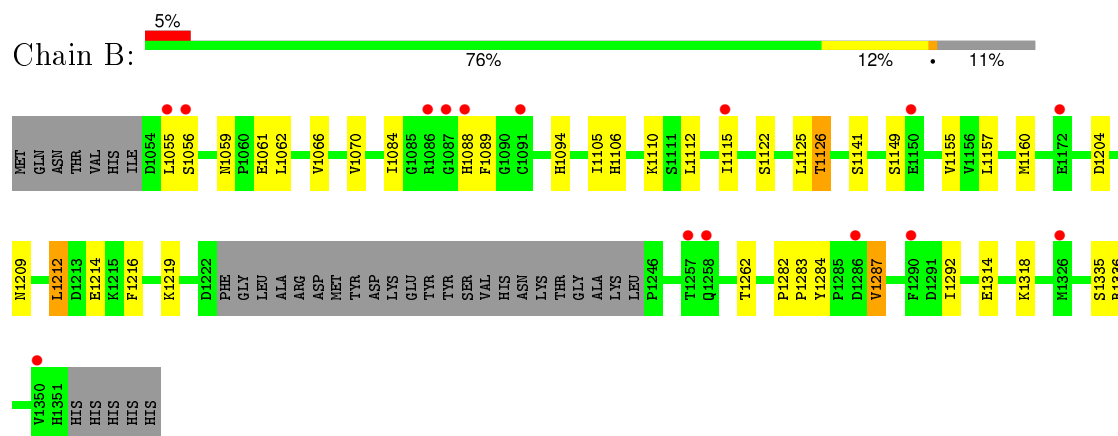
### 3 Residue-property plots [i](#)

These plots are drawn for all protein, RNA and DNA chains in the entry. The first graphic for a chain summarises the proportions of errors displayed in the second graphic. The second graphic shows the sequence view annotated by issues in geometry and electron density. Residues are color-coded according to the number of geometric quality criteria for which they contain at least one outlier: green = 0, yellow = 1, orange = 2 and red = 3 or more. A red dot above a residue indicates a poor fit to the electron density ( $RSRZ > 2$ ). Stretches of 2 or more consecutive residues without any outlier are shown as a green connector. Residues present in the sample, but not in the model, are shown in grey.

- Molecule 1: Hepatocyte growth factor receptor



- Molecule 1: Hepatocyte growth factor receptor



## 4 Data and refinement statistics

Property	Value	Source
Space group	P 21 21 21	Depositor
Cell constants a, b, c, $\alpha$ , $\beta$ , $\gamma$	74.74Å 78.65Å 129.26Å 90.00° 90.00° 90.00°	Depositor
Resolution (Å)	20.00 – 2.60 20.02 – 2.60	Depositor EDS
% Data completeness (in resolution range)	98.5 (20.00-2.60) 96.4 (20.02-2.60)	Depositor EDS
$R_{merge}$	0.07	Depositor
$R_{sym}$	(Not available)	Depositor
$\langle I/\sigma(I) \rangle$ <sup>1</sup>	3.15 (at 2.60Å)	Xtriage
Refinement program	REFMAC 5.2.0019	Depositor
R, $R_{free}$	0.244 , 0.288 0.235 , (Not available)	Depositor DCC
$R_{free}$ test set	No test flags present.	DCC
Wilson B-factor (Å <sup>2</sup> )	45.6	Xtriage
Anisotropy	0.412	Xtriage
Bulk solvent $k_{sol}$ (e/Å <sup>3</sup> ), $B_{sol}$ (Å <sup>2</sup> )	0.32 , 45.4	EDS
Estimated twinning fraction	0.018 for k,h,-l	Xtriage
L-test for twinning <sup>2</sup>	$\langle  L  \rangle = 0.48$ , $\langle L^2 \rangle = 0.32$	Xtriage
Outliers	0 of 23642 reflections	Xtriage
$F_o, F_c$ correlation	0.93	EDS
Total number of atoms	4474	wwPDB-VP
Average B, all atoms (Å <sup>2</sup> )	42.0	wwPDB-VP

Xtriage's analysis on translational NCS is as follows: *The analyses of the Patterson function reveals a significant off-origin peak that is 25.82 % of the origin peak, indicating pseudo translational symmetry. The chance of finding a peak of this or larger height randomly in a structure without pseudo translational symmetry is equal to 2.9535e-03. The detected translational NCS is most likely also responsible for the elevated intensity ratio.*

<sup>1</sup> Intensities estimated from amplitudes.

<sup>2</sup> Theoretical values of  $\langle |L| \rangle$ ,  $\langle L^2 \rangle$  for acentric reflections are 0.5, 0.375 respectively for untwinned datasets, and 0.333, 0.2 for perfectly twinned datasets.

## 5 Model quality

### 5.1 Standard geometry

Bond lengths and bond angles in the following residue types are not validated in this section: MT3

The Z score for a bond length (or angle) is the number of standard deviations the observed value is removed from the expected value. A bond length (or angle) with  $|Z| > 5$  is considered an outlier worth inspection. RMSZ is the root-mean-square of all Z scores of the bond lengths (or angles).

Mol	Chain	Bond lengths		Bond angles	
		RMSZ	$\# Z  > 5$	RMSZ	$\# Z  > 5$
1	A	0.37	0/2221	0.51	0/3015
1	B	0.38	0/2207	0.52	0/2997
All	All	0.38	0/4428	0.51	0/6012

There are no bond length outliers.

There are no bond angle outliers.

There are no chirality outliers.

There are no planarity outliers.

### 5.2 Too-close contacts

In the following table, the Non-H and H(model) columns list the number of non-hydrogen atoms and hydrogen atoms in the chain respectively. The H(added) column lists the number of hydrogen atoms added and optimized by MolProbity. The Clashes column lists the number of clashes within the asymmetric unit, whereas Symm-Clashes lists symmetry related clashes.

Mol	Chain	Non-H	H(model)	H(added)	Clashes	Symm-Clashes
1	A	2166	0	2156	20	0
1	B	2152	0	2142	24	0
2	A	37	0	24	2	0
2	B	37	0	24	1	0
3	A	41	0	0	1	0
3	B	41	0	0	0	0
All	All	4474	0	4346	43	0

The all-atom clashscore is defined as the number of clashes found per 1000 atoms (including hydrogen atoms). The all-atom clashscore for this structure is 5.

All (43) close contacts within the same asymmetric unit are listed below, sorted by their clash

magnitude.

Atom-1	Atom-2	Interatomic distance (Å)	Clash overlap (Å)
1:B:1112:LEU:HD21	1:B:1155:VAL:HG23	1.66	0.78
1:B:1284:TYR:HB3	1:B:1287:VAL:HG13	1.73	0.71
1:B:1122:SER:O	1:B:1126:THR:HG22	1.95	0.65
1:B:1059:ASN:HD21	1:B:1061:GLU:HB2	1.65	0.62
1:A:1059:ASN:HD21	1:A:1061:GLU:HB2	1.70	0.56
1:B:1112:LEU:HB3	1:B:1115:ILE:HD13	1.88	0.55
1:A:1062:LEU:O	1:A:1066:VAL:HG23	2.08	0.54
1:A:1126:THR:HG21	1:B:1126:THR:HB	1.90	0.53
1:A:1121:VAL:O	1:A:1125:LEU:HG	2.08	0.53
1:B:1160:MET:O	2:B:2:MT3:H27A	2.10	0.52
1:B:1094:HIS:CD2	1:B:1106:HIS:CD2	2.98	0.52
1:B:1066:VAL:HG21	1:B:1125:LEU:HD13	1.92	0.51
1:B:1089:PHE:O	1:B:1110:LYS:NZ	2.43	0.51
1:B:1204:ASP:O	1:B:1209:ASN:ND2	2.37	0.50
1:B:1212:LEU:HD22	1:B:1216:PHE:HA	1.92	0.50
1:A:1161:LYS:HD2	1:A:1214:GLU:HB2	1.93	0.50
1:B:1084:ILE:HD11	1:B:1094:HIS:HB2	1.93	0.50
1:B:1066:VAL:HG11	1:B:1125:LEU:HD22	1.95	0.49
1:A:1066:VAL:HG12	1:A:1070:VAL:HG23	1.93	0.49
1:B:1318:LYS:HD2	1:B:1336:ARG:NH1	2.28	0.48
1:A:1088:HIS:NE2	1:A:1208:ARG:HB2	2.28	0.48
1:A:1158:PRO:O	2:A:1:MT3:H23	2.14	0.47
1:B:1062:LEU:O	1:B:1066:VAL:HG23	2.14	0.47
1:A:1284:TYR:HB3	1:A:1287:VAL:HG22	1.96	0.47
1:B:1112:LEU:CD2	1:B:1155:VAL:HG23	2.42	0.47
1:A:1251:ALA:HA	1:A:1267:TRP:CD2	2.50	0.46
1:A:1097:LEU:HB3	1:A:1105:ILE:HG23	1.97	0.46
1:B:1112:LEU:HD21	1:B:1155:VAL:CG2	2.41	0.45
1:A:1295:TYR:CE1	1:A:1300:ARG:HD3	2.51	0.45
1:A:1288:ASN:HA	3:A:1363:HOH:O	2.17	0.45
1:A:1330:PHE:HA	1:A:1333:LEU:HD12	1.99	0.44
1:B:1314:GLU:OE1	1:B:1318:LYS:NZ	2.51	0.44
1:A:1160:MET:O	2:A:1:MT3:H21	2.17	0.44
1:B:1282:PRO:HA	1:B:1283:PRO:HD3	1.89	0.44
1:A:1304:GLN:HA	1:A:1305:PRO:HD3	1.87	0.43
1:A:1059:ASN:HD22	1:A:1062:LEU:H	1.67	0.43
1:B:1066:VAL:HG12	1:B:1070:VAL:HG13	1.99	0.43
1:B:1094:HIS:HD2	1:B:1106:HIS:CD2	2.37	0.42
1:B:1059:ASN:ND2	1:B:1062:LEU:H	2.18	0.42
1:A:1118:ILE:HG13	1:A:1119:GLY:N	2.34	0.41
1:A:1178:VAL:O	1:A:1182:ILE:HG13	2.20	0.41

*Continued on next page...*



*Continued from previous page...*

Atom-1	Atom-2	Interatomic distance (Å)	Clash overlap (Å)
1:B:1059:ASN:HD22	1:B:1062:LEU:H	1.67	0.41
1:A:1152:SER:HB2	1:A:1153:PRO:HD2	2.01	0.41

There are no symmetry-related clashes.

## 5.3 Torsion angles [i](#)

### 5.3.1 Protein backbone [i](#)

In the following table, the Percentiles column shows the percent Ramachandran outliers of the chain as a percentile score with respect to all X-ray entries followed by that with respect to entries of similar resolution.

The Analysed column shows the number of residues for which the backbone conformation was analysed, and the total number of residues.

Mol	Chain	Analysed	Favoured	Allowed	Outliers	Percentiles	
1	A	272/310 (88%)	260 (96%)	10 (4%)	2 (1%)	26	51
1	B	271/310 (87%)	261 (96%)	8 (3%)	2 (1%)	26	51
All	All	543/620 (88%)	521 (96%)	18 (3%)	4 (1%)	26	51

All (4) Ramachandran outliers are listed below:

Mol	Chain	Res	Type
1	A	1055	LEU
1	A	1114	ARG
1	B	1056	SER
1	B	1088	HIS

### 5.3.2 Protein sidechains [i](#)

In the following table, the Percentiles column shows the percent sidechain outliers of the chain as a percentile score with respect to all X-ray entries followed by that with respect to entries of similar resolution.

The Analysed column shows the number of residues for which the sidechain conformation was analysed, and the total number of residues.

*Continued on next page...*

*Continued from previous page...*

Mol	Chain	Analysed	Rotameric	Outliers	Percentiles
1	A	239/276 (87%)	231 (97%)	8 (3%)	45 73
1	B	236/276 (86%)	223 (94%)	13 (6%)	27 51
All	All	475/552 (86%)	454 (96%)	21 (4%)	35 63

All (21) residues with a non-rotameric sidechain are listed below:

Mol	Chain	Res	Type
1	A	1089	PHE
1	A	1099	ASP
1	A	1105	ILE
1	A	1149	SER
1	A	1157	LEU
1	A	1172	GLU
1	A	1175	ASN
1	A	1252	LEU
1	B	1055	LEU
1	B	1105	ILE
1	B	1126	THR
1	B	1141	SER
1	B	1149	SER
1	B	1157	LEU
1	B	1212	LEU
1	B	1214	GLU
1	B	1219	LYS
1	B	1262	THR
1	B	1287	VAL
1	B	1292	ILE
1	B	1335	SER

Some sidechains can be flipped to improve hydrogen bonding and reduce clashes. All (9) such sidechains are listed below:

Mol	Chain	Res	Type
1	A	1059	ASN
1	A	1167	ASN
1	A	1256	GLN
1	B	1059	ASN
1	B	1068	HIS
1	B	1079	HIS

*Continued on next page...*

*Continued from previous page...*

Mol	Chain	Res	Type
1	B	1106	HIS
1	B	1256	GLN
1	B	1258	GLN

### 5.3.3 RNA ⓘ

There are no RNA molecules in this entry.

## 5.4 Non-standard residues in protein, DNA, RNA chains ⓘ

There are no non-standard protein/DNA/RNA residues in this entry.

## 5.5 Carbohydrates ⓘ

There are no carbohydrates in this entry.

## 5.6 Ligand geometry ⓘ

2 ligands are modelled in this entry.

In the following table, the Counts columns list the number of bonds (or angles) for which Mogul statistics could be retrieved, the number of bonds (or angles) that are observed in the model and the number of bonds (or angles) that are defined in the chemical component dictionary. The Link column lists molecule types, if any, to which the group is linked. The Z score for a bond length (or angle) is the number of standard deviations the observed value is removed from the expected value. A bond length (or angle) with  $|Z| > 2$  is considered an outlier worth inspection. RMSZ is the root-mean-square of all Z scores of the bond lengths (or angles).

Mol	Type	Chain	Res	Link	Bond lengths			Bond angles		
					Counts	RMSZ	# Z  > 2	Counts	RMSZ	# Z  > 2
2	MT3	A	1	-	39,41,41	1.34	5 (12%)	47,58,58	1.17	5 (10%)
2	MT3	B	2	-	39,41,41	1.28	6 (15%)	47,58,58	1.27	6 (12%)

In the following table, the Chirals column lists the number of chiral outliers, the number of chiral centers analysed, the number of these observed in the model and the number defined in the chemical component dictionary. Similar counts are reported in the Torsion and Rings columns. '-' means no outliers of that kind were identified.

Mol	Type	Chain	Res	Link	Chirals	Torsions	Rings
2	MT3	A	1	-	-	0/16/16/16	0/5/5/5

*Continued on next page...*

*Continued from previous page...*

Mol	Type	Chain	Res	Link	Chirals	Torsions	Rings
2	MT3	B	2	-	-	0/16/16/16	0/5/5/5

All (11) bond length outliers are listed below:

Mol	Chain	Res	Type	Atoms	Z	Observed(Å)	Ideal(Å)
2	A	1	MT3	C7-C14	-5.14	1.41	1.49
2	B	2	MT3	C7-C14	-5.04	1.41	1.49
2	B	2	MT3	C17-C22	-2.04	1.39	1.42
2	A	1	MT3	C18-C19	2.01	1.40	1.36
2	B	2	MT3	C18-C19	2.02	1.40	1.36
2	B	2	MT3	C9-N1	2.02	1.41	1.36
2	A	1	MT3	C21-C20	2.09	1.40	1.36
2	B	2	MT3	C8-N1	2.11	1.41	1.38
2	B	2	MT3	C21-C20	2.13	1.40	1.36
2	A	1	MT3	C8-N1	2.25	1.41	1.38
2	A	1	MT3	C9-N1	2.39	1.42	1.36

All (11) bond angle outliers are listed below:

Mol	Chain	Res	Type	Atoms	Z	Observed(°)	Ideal(°)
2	B	2	MT3	C17-C22-N3	-2.93	119.77	122.88
2	A	1	MT3	C7-C10-N2	-2.84	121.73	125.06
2	B	2	MT3	C7-C10-N2	-2.75	121.84	125.06
2	A	1	MT3	C17-C22-N3	-2.71	120.00	122.88
2	B	2	MT3	C24-C23-N3	-2.45	120.70	124.56
2	B	2	MT3	O1-C19-C18	-2.25	122.23	125.25
2	A	1	MT3	O3-C25-C17	2.03	119.10	115.12
2	B	2	MT3	C21-C22-N3	2.06	120.23	117.95
2	A	1	MT3	C25-O3-C11	2.55	123.93	117.75
2	A	1	MT3	C23-N3-C22	2.66	121.37	116.87
2	B	2	MT3	C23-N3-C22	3.02	121.99	116.87

There are no chirality outliers.

There are no torsion outliers.

There are no ring outliers.

2 monomers are involved in 3 short contacts:

Mol	Chain	Res	Type	Clashes	Symm-Clashes
2	A	1	MT3	2	0
2	B	2	MT3	1	0

## 5.7 Other polymers

There are no such residues in this entry.

## 5.8 Polymer linkage issues

There are no chain breaks in this entry.

## 6 Fit of model and data ⓘ

### 6.1 Protein, DNA and RNA chains ⓘ

In the following table, the column labelled ‘#RSRZ > 2’ contains the number (and percentage) of RSRZ outliers, followed by percent RSRZ outliers for the chain as percentile scores relative to all X-ray entries and entries of similar resolution. The OWAB column contains the minimum, median, 95<sup>th</sup> percentile and maximum values of the occupancy-weighted average B-factor per residue. The column labelled ‘Q < 0.9’ lists the number of (and percentage) of residues with an average occupancy less than 0.9.

Mol	Chain	Analysed	<RSRZ>	#RSRZ>2	OWAB(Å <sup>2</sup> )	Q<0.9
1	A	276/310 (89%)	0.13	10 (3%) 46 38	27, 42, 59, 70	0
1	B	275/310 (88%)	0.08	15 (5%) 29 21	28, 42, 62, 69	0
All	All	551/620 (88%)	0.11	25 (4%) 37 29	27, 42, 61, 70	0

All (25) RSRZ outliers are listed below:

Mol	Chain	Res	Type	RSRZ
1	A	1055	LEU	5.2
1	B	1055	LEU	4.8
1	B	1290	PHE	4.1
1	A	1087	GLY	3.8
1	A	1088	HIS	3.5
1	A	1325	GLU	3.4
1	B	1257	THR	3.4
1	B	1088	HIS	3.1
1	A	1089	PHE	2.9
1	A	1290	PHE	2.9
1	B	1172	GLU	2.8
1	A	1257	THR	2.8
1	B	1091	CYS	2.7
1	A	1326	MET	2.7
1	B	1086	ARG	2.7
1	B	1326	MET	2.7
1	B	1115	ILE	2.6
1	B	1286	ASP	2.5
1	B	1056	SER	2.5
1	B	1258	GLN	2.4
1	A	1109	VAL	2.2
1	A	1056	SER	2.1
1	B	1087	GLY	2.0
1	B	1350	VAL	2.0

*Continued on next page...*

*Continued from previous page...*

Mol	Chain	Res	Type	RSRZ
1	B	1150	GLU	2.0

## 6.2 Non-standard residues in protein, DNA, RNA chains [i](#)

There are no non-standard protein/DNA/RNA residues in this entry.

## 6.3 Carbohydrates [i](#)

There are no carbohydrates in this entry.

## 6.4 Ligands [i](#)

In the following table, the Atoms column lists the number of modelled atoms in the group and the number defined in the chemical component dictionary. LLDF column lists the quality of electron density of the group with respect to its neighbouring residues in protein, DNA or RNA chains. The B-factors column lists the minimum, median, 95<sup>th</sup> percentile and maximum values of B factors of atoms in the group. The column labelled 'Q< 0.9' lists the number of atoms with occupancy less than 0.9.

Mol	Type	Chain	Res	Atoms	RSCC	RSR	LLDF	B-factors(Å <sup>2</sup> )	Q<0.9
2	MT3	A	1	37/37	0.95	0.14	-0.78	23,27,30,30	0
2	MT3	B	2	37/37	0.95	0.14	-0.95	29,33,36,36	0

## 6.5 Other polymers [i](#)

There are no such residues in this entry.