



Full wwPDB X-ray Structure Validation Report ⓘ

Feb 1, 2016 – 08:24 AM GMT

PDB ID : 3EGG
Title : Crystal structure of a complex between Protein Phosphatase 1 alpha (PP1) and the PP1 binding and PDZ domains of Spinophilin
Authors : Ragusa, M.J.; Page, R.; Peti, W.
Deposited on : 2008-09-10
Resolution : 1.85 Å(reported)

This is a Full wwPDB X-ray Structure Validation Report for a publicly released PDB entry.
We welcome your comments at validation@mail.wwpdb.org
A user guide is available at
<http://wwpdb.org/validation/2016/XrayValidationReportHelp>
with specific help available everywhere you see the ⓘ symbol.

The following versions of software and data (see [references ⓘ](#)) were used in the production of this report:

MolProbity : 4.02b-467
Mogul : 1.7 (RC4), CSD as536be (2015)
Xtriage (Phenix) : 1.9-1692
EDS : rb-20026688
Percentile statistics : 20151230.v01 (using entries in the PDB archive December 30th 2015)
Refmac : 5.8.0135
CCP4 : 6.5.0
Ideal geometry (proteins) : Engh & Huber (2001)
Ideal geometry (DNA, RNA) : Parkinson et al. (1996)
Validation Pipeline (wwPDB-VP) : trunk26865

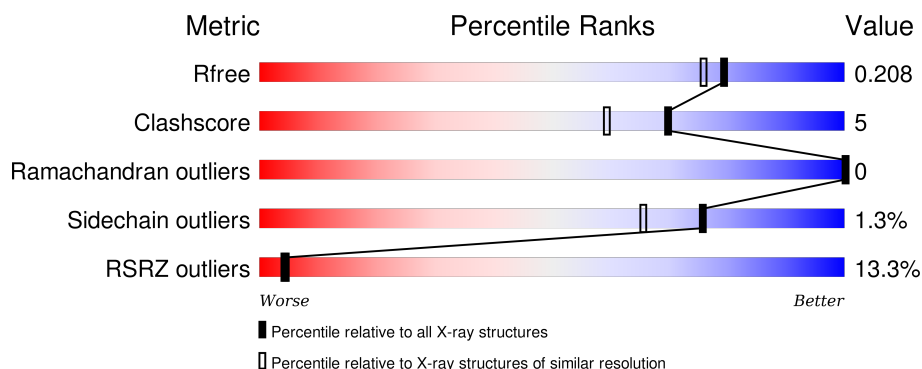
1 Overall quality at a glance

The following experimental techniques were used to determine the structure:

X-RAY DIFFRACTION

The reported resolution of this entry is 1.85 Å.

Percentile scores (ranging between 0-100) for global validation metrics of the entry are shown in the following graphic. The table shows the number of entries on which the scores are based.



Metric	Whole archive (#Entries)	Similar resolution (#Entries, resolution range(Å))
R_{free}	91344	1745 (1.86-1.86)
Clashscore	102246	1898 (1.86-1.86)
Ramachandran outliers	100387	1875 (1.86-1.86)
Sidechain outliers	100360	1875 (1.86-1.86)
RSRZ outliers	91569	1747 (1.86-1.86)

The table below summarises the geometric issues observed across the polymeric chains and their fit to the electron density. The red, orange, yellow and green segments on the lower bar indicate the fraction of residues that contain outliers for ≥ 3 , 2, 1 and 0 types of geometric quality criteria. A grey segment represents the fraction of residues that are not modelled. The numeric value for each fraction is indicated below the corresponding segment, with a dot representing fractions $\leq 5\%$. The upper red bar (where present) indicates the fraction of residues that have poor fit to the electron density. The numeric value is given above the bar.

Mol	Chain	Length	Quality of chain
1	A	329	<div> <div>9%</div> <div>83%</div> <div>7%</div> <div>11%</div> </div>
1	B	329	<div> <div>7%</div> <div>81%</div> <div>8%</div> <div>11%</div> </div>
2	C	170	<div> <div>22%</div> <div>86%</div> <div>6%</div> <div>6%</div> </div>
2	D	170	<div> <div>10%</div> <div>36%</div> <div>61%</div> </div>

The following table lists non-polymeric compounds, carbohydrate monomers and non-standard residues in protein, DNA, RNA chains that are outliers for geometric or electron-density-fit crite-

ria:

Mol	Type	Chain	Res	Chirality	Geometry	Clashes	Electron density
3	GOL	A	332	-	-	-	X
3	GOL	A	333	-	-	-	X
3	GOL	B	332	-	-	-	X
3	GOL	D	1	-	-	-	X
5	MES	A	403	-	-	-	X
5	MES	B	404	-	-	X	X
5	MES	B	405	-	-	-	X

2 Entry composition

There are 6 unique types of molecules in this entry. The entry contains 7033 atoms, of which 0 are hydrogens and 0 are deuteriums.

In the tables below, the ZeroOcc column contains the number of atoms modelled with zero occupancy, the AltConf column contains the number of residues with at least one atom in alternate conformation and the Trace column contains the number of residues modelled with at most 2 atoms.

- Molecule 1 is a protein called Serine/threonine-protein phosphatase PP1-alpha catalytic subunit.

Mol	Chain	Residues	Atoms					ZeroOcc	AltConf	Trace
1	A	294	Total	C	N	O	S	0	10	0
			2367	1520	387	440	20			
1	B	294	Total	C	N	O	S	0	11	0
			2375	1531	390	434	20			

There are 10 discrepancies between the modelled and reference sequences:

Chain	Residue	Modelled	Actual	Comment	Reference
A	-4	GLY	-	EXPRESSION TAG	UNP P62136
A	-3	HIS	-	EXPRESSION TAG	UNP P62136
A	-2	MET	-	EXPRESSION TAG	UNP P62136
A	-1	GLY	-	EXPRESSION TAG	UNP P62136
A	0	SER	-	EXPRESSION TAG	UNP P62136
B	-4	GLY	-	EXPRESSION TAG	UNP P62136
B	-3	HIS	-	EXPRESSION TAG	UNP P62136
B	-2	MET	-	EXPRESSION TAG	UNP P62136
B	-1	GLY	-	EXPRESSION TAG	UNP P62136
B	0	SER	-	EXPRESSION TAG	UNP P62136

- Molecule 2 is a protein called Spinophilin.

Mol	Chain	Residues	Atoms					ZeroOcc	AltConf	Trace
2	C	160	Total	C	N	O	S	0	2	0
			1187	746	206	231	4			
2	D	66	Total	C	N	O	S	0	2	0
			501	314	82	104	1			

There are 6 discrepancies between the modelled and reference sequences:

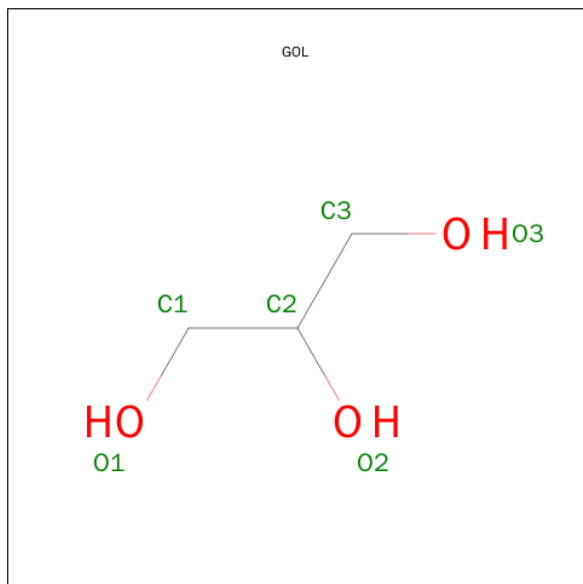
Chain	Residue	Modelled	Actual	Comment	Reference
C	-2	GLY	-	EXPRESSION TAG	UNP O35274

Continued on next page...

Continued from previous page...

Chain	Residue	Modelled	Actual	Comment	Reference
C	-1	HIS	-	EXPRESSION TAG	UNP O35274
C	0	MET	-	EXPRESSION TAG	UNP O35274
D	-2	GLY	-	EXPRESSION TAG	UNP O35274
D	-1	HIS	-	EXPRESSION TAG	UNP O35274
D	0	MET	-	EXPRESSION TAG	UNP O35274

- Molecule 3 is GLYCEROL (three-letter code: GOL) (formula: C₃H₈O₃).

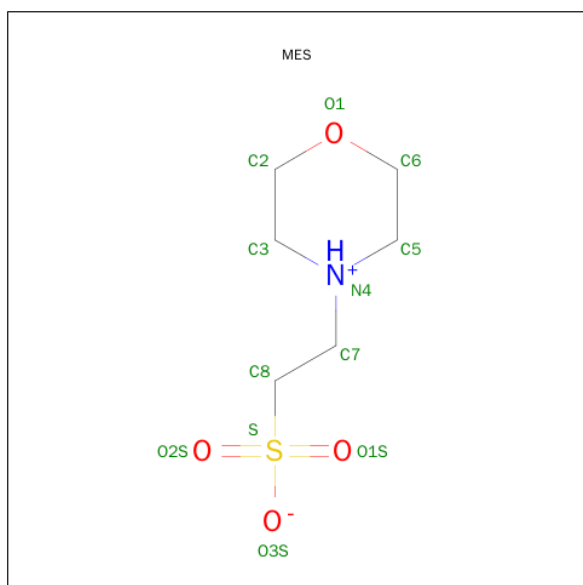


Mol	Chain	Residues	Atoms			ZeroOcc	AltConf
3	A	1	Total	C	O	0	0
			6	3	3		
3	A	1	Total	C	O	0	0
			6	3	3		
3	A	1	Total	C	O	0	0
			6	3	3		
3	B	1	Total	C	O	0	0
			6	3	3		
3	B	1	Total	C	O	0	0
			6	3	3		
3	C	1	Total	C	O	0	0
			6	3	3		
3	D	1	Total	C	O	0	0
			6	3	3		

- Molecule 4 is MANGANESE (II) ION (three-letter code: MN) (formula: Mn).

Mol	Chain	Residues	Atoms	ZeroOcc	AltConf
4	B	2	Total Mn 2 2	0	0
4	A	2	Total Mn 2 2	0	0

- Molecule 5 is 2-(N-MORPHOLINO)-ETHANESULFONIC ACID (three-letter code: MES) (formula: C₆H₁₃NO₄S).



Mol	Chain	Residues	Atoms	ZeroOcc	AltConf
5	A	1	Total C N O S 12 6 1 4 1	0	0
5	B	1	Total C N O S 12 6 1 4 1	0	0
5	B	1	Total C N O S 12 6 1 4 1	6	0

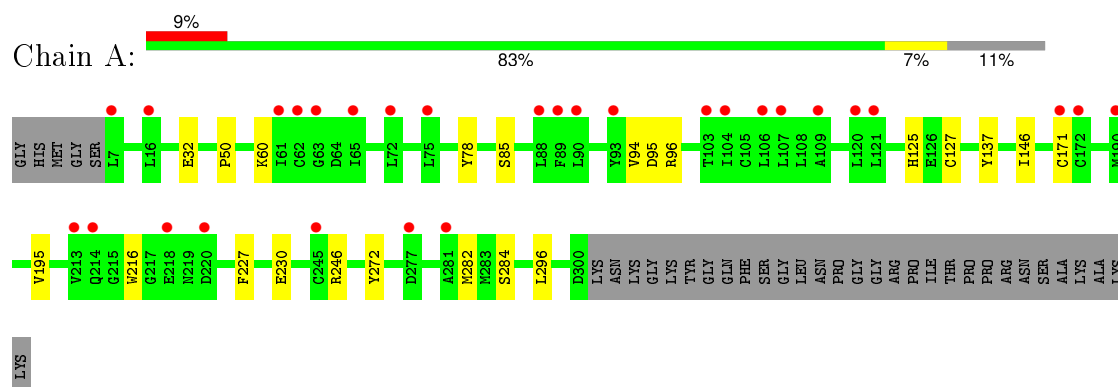
- Molecule 6 is water.

Mol	Chain	Residues	Atoms	ZeroOcc	AltConf
6	A	160	Total O 160 160	0	0
6	B	287	Total O 287 287	0	0
6	C	67	Total O 67 67	0	0
6	D	7	Total O 7 7	0	0

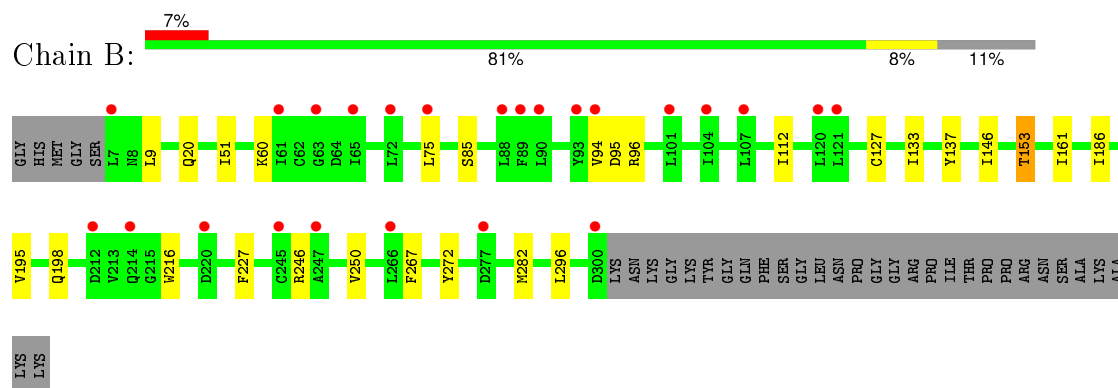
3 Residue-property plots [i](#)

These plots are drawn for all protein, RNA and DNA chains in the entry. The first graphic for a chain summarises the proportions of errors displayed in the second graphic. The second graphic shows the sequence view annotated by issues in geometry and electron density. Residues are color-coded according to the number of geometric quality criteria for which they contain at least one outlier: green = 0, yellow = 1, orange = 2 and red = 3 or more. A red dot above a residue indicates a poor fit to the electron density ($RSRZ > 2$). Stretches of 2 or more consecutive residues without any outlier are shown as a green connector. Residues present in the sample, but not in the model, are shown in grey.

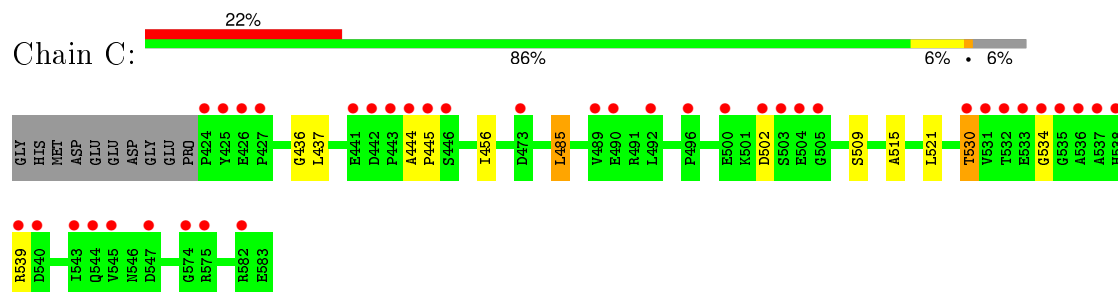
- Molecule 1: Serine/threonine-protein phosphatase PP1-alpha catalytic subunit



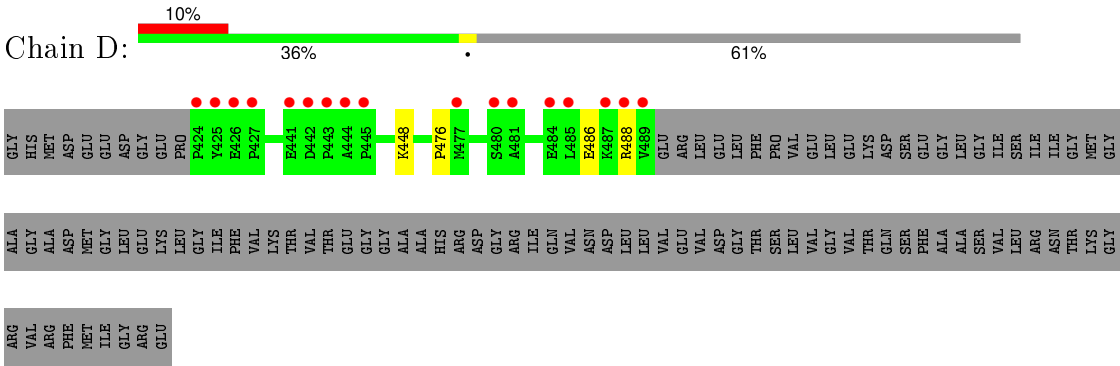
- Molecule 1: Serine/threonine-protein phosphatase PP1-alpha catalytic subunit



- Molecule 2: Spinophilin



- Molecule 2: Spinophilin



4 Data and refinement statistics

Property	Value	Source
Space group	C 1 2 1	Depositor
Cell constants a, b, c, α , β , γ	119.67Å 84.42Å 109.16Å 90.00° 93.50° 90.00°	Depositor
Resolution (Å)	27.53 – 1.85 27.53 – 1.85	Depositor EDS
% Data completeness (in resolution range)	99.1 (27.53-1.85) 99.1 (27.53-1.85)	Depositor EDS
R_{merge}	(Not available)	Depositor
R_{sym}	0.08	Depositor
$\langle I/\sigma(I) \rangle$ ¹	2.15 (at 1.85Å)	Xtriage
Refinement program	REFMAC 5.2.0019	Depositor
R, R_{free}	0.179 , 0.211 0.178 , 0.208	Depositor DCC
R_{free} test set	4548 reflections (5.23%)	DCC
Wilson B-factor (Å ²)	22.0	Xtriage
Anisotropy	0.027	Xtriage
Bulk solvent k_{sol} (e/Å ³), B_{sol} (Å ²)	0.38 , 50.1	EDS
Estimated twinning fraction	No twinning to report.	Xtriage
L-test for twinning ²	$\langle L \rangle = 0.50$, $\langle L^2 \rangle = 0.33$	Xtriage
Outliers	1 of 91551 reflections (0.001%)	Xtriage
F_o, F_c correlation	0.95	EDS
Total number of atoms	7033	wwPDB-VP
Average B, all atoms (Å ²)	26.0	wwPDB-VP

Xtriage's analysis on translational NCS is as follows: *The analyses of the Patterson function reveals a significant off-origin peak that is 43.73 % of the origin peak, indicating pseudo translational symmetry. The chance of finding a peak of this or larger height randomly in a structure without pseudo translational symmetry is equal to 1.6904e-04. The detected translational NCS is most likely also responsible for the elevated intensity ratio.*

¹Intensities estimated from amplitudes.

²Theoretical values of $\langle |L| \rangle$, $\langle L^2 \rangle$ for acentric reflections are 0.5, 0.375 respectively for untwinned datasets, and 0.333, 0.2 for perfectly twinned datasets.

5 Model quality [i](#)

5.1 Standard geometry [i](#)

Bond lengths and bond angles in the following residue types are not validated in this section: GOL, MN, MES

The Z score for a bond length (or angle) is the number of standard deviations the observed value is removed from the expected value. A bond length (or angle) with $|Z| > 5$ is considered an outlier worth inspection. RMSZ is the root-mean-square of all Z scores of the bond lengths (or angles).

Mol	Chain	Bond lengths		Bond angles	
		RMSZ	$\# Z > 5$	RMSZ	$\# Z > 5$
1	A	0.58	0/2468	0.62	0/3340
1	B	0.59	0/2476	0.63	0/3350
2	C	0.42	0/1212	0.58	0/1639
2	D	0.47	0/521	0.56	0/711
All	All	0.55	0/6677	0.62	0/9040

There are no bond length outliers.

There are no bond angle outliers.

There are no chirality outliers.

There are no planarity outliers.

5.2 Too-close contacts [i](#)

In the following table, the Non-H and H(model) columns list the number of non-hydrogen atoms and hydrogen atoms in the chain respectively. The H(added) column lists the number of hydrogen atoms added and optimized by MolProbity. The Clashes column lists the number of clashes within the asymmetric unit, whereas Symm-Clashes lists symmetry related clashes.

Mol	Chain	Non-H	H(model)	H(added)	Clashes	Symm-Clashes
1	A	2367	0	2298	19	0
1	B	2375	0	2336	31	0
2	C	1187	0	1158	7	0
2	D	501	0	449	2	0
3	A	18	0	24	2	0
3	B	12	0	16	3	0
3	C	6	0	8	0	0
3	D	6	0	8	0	0
4	A	2	0	0	0	0

Continued on next page...

Continued from previous page...

Mol	Chain	Non-H	H(model)	H(added)	Clashes	Symm-Clashes
4	B	2	0	0	0	0
5	A	12	0	12	3	0
5	B	24	0	24	7	0
6	A	160	0	0	1	0
6	B	287	0	0	4	0
6	C	67	0	0	0	0
6	D	7	0	0	0	0
All	All	7033	0	6333	58	0

The all-atom clashscore is defined as the number of clashes found per 1000 atoms (including hydrogen atoms). The all-atom clashscore for this structure is 5.

All (58) close contacts within the same asymmetric unit are listed below, sorted by their clash magnitude.

Atom-1	Atom-2	Interatomic distance (Å)	Clash overlap (Å)
1:B:96:ARG:HH22	5:B:404:MES:C7	1.77	0.96
1:B:75[B]:LEU:HD23	1:B:296[B]:LEU:HG	1.61	0.82
1:B:96:ARG:NH2	5:B:404:MES:H52	1.95	0.82
1:B:96:ARG:NH2	5:B:404:MES:C5	2.45	0.79
1:B:127[B]:CYS:SG	1:B:195:VAL:HG21	2.24	0.78
1:A:60[A]:LYS:HE2	1:A:284:SER:OG	1.90	0.71
1:A:125:HIS:NE2	5:A:403:MES:H82	2.04	0.71
1:A:127[B]:CYS:SG	1:A:195:VAL:HG21	2.30	0.71
1:B:96:ARG:HH22	5:B:404:MES:C5	2.04	0.70
1:B:96:ARG:HH22	5:B:404:MES:H72	1.56	0.69
2:C:509:SER:OG	2:C:530:THR:HB	1.93	0.69
1:B:153:THR:HG21	6:B:645:HOH:O	1.93	0.68
1:A:230[B]:GLU:HG2	6:A:522:HOH:O	1.93	0.67
1:A:50:PRO:HD3	3:A:333:GOL:H12	1.76	0.67
1:A:96:ARG:HH22	5:A:403:MES:H81	1.60	0.66
1:B:75[B]:LEU:CD2	1:B:296[B]:LEU:HG	2.28	0.62
1:B:161[B]:ILE:HD11	1:B:186:ILE:HG23	1.81	0.61
1:B:137:TYR:CE1	1:B:146:ILE:HD12	2.35	0.61
1:B:133[A]:ILE:HG23	2:D:476:PRO:HA	1.84	0.60
2:C:502:ASP:OD2	2:C:539:ARG:NH2	2.35	0.59
2:C:534:GLY:O	2:C:539:ARG:NH1	2.35	0.59
1:A:85[B]:SER:OG	3:A:332:GOL:H31	2.01	0.59
1:B:127[B]:CYS:SG	1:B:195:VAL:CG2	2.91	0.58
1:A:60[B]:LYS:HD3	1:A:282:MET:SD	2.48	0.54
2:C:509:SER:HG	2:C:530:THR:HB	1.72	0.54
1:B:96:ARG:NH2	5:B:404:MES:C7	2.61	0.53

Continued on next page...

Continued from previous page...

Atom-1	Atom-2	Interatomic distance (Å)	Clash overlap (Å)
1:A:127[B]:CYS:SG	1:A:195:VAL:CG2	2.96	0.53
1:B:96:ARG:HH22	5:B:404:MES:H71	1.69	0.52
1:B:94:VAL:O	1:B:95:ASP:HB2	2.11	0.51
1:B:9[A]:LEU:HD11	1:B:112:ILE:HG22	1.93	0.51
1:B:75[B]:LEU:HD23	1:B:296[B]:LEU:CG	2.37	0.50
1:B:250[B]:VAL:HG12	1:B:267:PHE:CZ	2.47	0.50
1:A:32:GLU:OE2	6:B:573:HOH:O	2.20	0.49
1:A:216:TRP:CZ3	1:A:227:PHE:HB3	2.47	0.49
1:A:94:VAL:O	1:A:95:ASP:HB2	2.13	0.49
1:B:85:SER:HB3	3:B:332:GOL:H31	1.95	0.49
1:A:96:ARG:HH22	5:A:403:MES:C8	2.27	0.48
1:B:20:GLN:OE1	3:B:331:GOL:H31	2.12	0.48
2:C:485:LEU:HD23	2:C:515:ALA:HB2	1.97	0.46
1:B:250[B]:VAL:HG11	1:B:272:TYR:CD2	2.50	0.46
1:A:137:TYR:CE1	1:A:146:ILE:HD12	2.51	0.46
2:D:486:GLU:C	2:D:488:ARG:H	2.20	0.45
1:B:75[B]:LEU:HD23	1:B:296[B]:LEU:CD2	2.47	0.43
1:B:60[A]:LYS:HG3	3:B:332:GOL:H32	1.99	0.43
1:A:96:ARG:NH1	1:A:272:TYR:OH	2.51	0.43
1:B:60[B]:LYS:HD3	1:B:282:MET:SD	2.58	0.43
1:A:78:TYR:CD2	1:A:296[A]:LEU:HD21	2.53	0.43
1:B:153:THR:CG2	6:B:645:HOH:O	2.62	0.42
1:B:51:ILE:HG12	1:B:161[B]:ILE:HG12	2.01	0.42
1:A:78:TYR:HD2	1:A:296[A]:LEU:HD21	1.85	0.42
1:B:250[B]:VAL:HG11	1:B:272:TYR:HD2	1.85	0.41
1:B:153:THR:HG22	6:B:646:HOH:O	2.21	0.41
1:B:216:TRP:CZ3	1:B:227:PHE:HB3	2.56	0.41
2:C:436:GLY:HA2	2:C:456:ILE:HG13	2.02	0.40
1:B:250[B]:VAL:HG12	1:B:267:PHE:CE1	2.56	0.40
2:C:444:ALA:HA	2:C:445:PRO:HD3	1.92	0.40

There are no symmetry-related clashes.

5.3 Torsion angles ⓘ

5.3.1 Protein backbone ⓘ

In the following table, the Percentiles column shows the percent Ramachandran outliers of the chain as a percentile score with respect to all X-ray entries followed by that with respect to entries of similar resolution.

The Analysed column shows the number of residues for which the backbone conformation was analysed, and the total number of residues.

Mol	Chain	Analysed	Favoured	Allowed	Outliers	Percentiles	
1	A	302/329 (92%)	291 (96%)	11 (4%)	0	100	100
1	B	303/329 (92%)	292 (96%)	11 (4%)	0	100	100
2	C	160/170 (94%)	157 (98%)	3 (2%)	0	100	100
2	D	66/170 (39%)	64 (97%)	2 (3%)	0	100	100
All	All	831/998 (83%)	804 (97%)	27 (3%)	0	100	100

There are no Ramachandran outliers to report.

5.3.2 Protein sidechains ⓘ

In the following table, the Percentiles column shows the percent sidechain outliers of the chain as a percentile score with respect to all X-ray entries followed by that with respect to entries of similar resolution.

The Analysed column shows the number of residues for which the sidechain conformation was analysed, and the total number of residues.

Mol	Chain	Analysed	Rotameric	Outliers	Percentiles	
1	A	260/285 (91%)	259 (100%)	1 (0%)	93	92
1	B	263/285 (92%)	260 (99%)	3 (1%)	80	72
2	C	122/141 (86%)	118 (97%)	4 (3%)	45	25
2	D	53/141 (38%)	52 (98%)	1 (2%)	65	49
All	All	698/852 (82%)	689 (99%)	9 (1%)	76	65

All (9) residues with a non-rotameric sidechain are listed below:

Mol	Chain	Res	Type
1	A	246	ARG
1	B	153	THR
1	B	198	GLN
1	B	246	ARG
2	C	437	LEU
2	C	485	LEU
2	C	521	LEU
2	C	530	THR
2	D	448	LYS

Some sidechains can be flipped to improve hydrogen bonding and reduce clashes. All (3) such sidechains are listed below:

Mol	Chain	Res	Type
1	A	20	GLN
1	A	198	GLN
2	D	450	HIS

5.3.3 RNA [i](#)

There are no RNA molecules in this entry.

5.4 Non-standard residues in protein, DNA, RNA chains [i](#)

There are no non-standard protein/DNA/RNA residues in this entry.

5.5 Carbohydrates [i](#)

There are no carbohydrates in this entry.

5.6 Ligand geometry [i](#)

Of 14 ligands modelled in this entry, 4 are monoatomic - leaving 10 for Mogul analysis.

In the following table, the Counts columns list the number of bonds (or angles) for which Mogul statistics could be retrieved, the number of bonds (or angles) that are observed in the model and the number of bonds (or angles) that are defined in the chemical component dictionary. The Link column lists molecule types, if any, to which the group is linked. The Z score for a bond length (or angle) is the number of standard deviations the observed value is removed from the expected value. A bond length (or angle) with $|Z| > 2$ is considered an outlier worth inspection. RMSZ is the root-mean-square of all Z scores of the bond lengths (or angles).

Mol	Type	Chain	Res	Link	Bond lengths			Bond angles		
					Counts	RMSZ	$\# Z > 2$	Counts	RMSZ	$\# Z > 2$
3	GOL	A	331	-	5,5,5	0.30	0	5,5,5	0.21	0
3	GOL	A	332	-	5,5,5	0.35	0	5,5,5	0.30	0
3	GOL	A	333	-	5,5,5	0.46	0	5,5,5	0.26	0
5	MES	A	403	-	11,12,12	0.63	0	14,16,16	2.52	6 (42%)
3	GOL	B	331	-	5,5,5	0.28	0	5,5,5	0.16	0
3	GOL	B	332	-	5,5,5	0.23	0	5,5,5	0.33	0
5	MES	B	404	-	11,12,12	0.63	0	14,16,16	3.34	7 (50%)
5	MES	B	405	-	11,12,12	3.21	1 (9%)	14,16,16	5.23	8 (57%)

Mol	Type	Chain	Res	Link	Bond lengths			Bond angles		
					Counts	RMSZ	# Z > 2	Counts	RMSZ	# Z > 2
3	GOL	C	1	-	5,5,5	0.29	0	5,5,5	0.18	0
3	GOL	D	1	-	5,5,5	0.30	0	5,5,5	0.20	0

In the following table, the Chirals column lists the number of chiral outliers, the number of chiral centers analysed, the number of these observed in the model and the number defined in the chemical component dictionary. Similar counts are reported in the Torsion and Rings columns. '-' means no outliers of that kind were identified.

Mol	Type	Chain	Res	Link	Chirals	Torsions	Rings
3	GOL	A	331	-	-	0/4/4/4	0/0/0/0
3	GOL	A	332	-	-	0/4/4/4	0/0/0/0
3	GOL	A	333	-	-	0/4/4/4	0/0/0/0
5	MES	A	403	-	-	0/6/14/14	0/1/1/1
3	GOL	B	331	-	-	0/4/4/4	0/0/0/0
3	GOL	B	332	-	-	0/4/4/4	0/0/0/0
5	MES	B	404	-	-	0/6/14/14	0/1/1/1
5	MES	B	405	-	-	0/6/14/14	0/1/1/1
3	GOL	C	1	-	-	0/4/4/4	0/0/0/0
3	GOL	D	1	-	-	0/4/4/4	0/0/0/0

All (1) bond length outliers are listed below:

Mol	Chain	Res	Type	Atoms	Z	Observed(Å)	Ideal(Å)
5	B	405	MES	C7-N4	10.36	1.71	1.47

All (21) bond angle outliers are listed below:

Mol	Chain	Res	Type	Atoms	Z	Observed(°)	Ideal(°)
5	B	405	MES	C7-N4-C5	-9.76	86.24	111.27
5	B	404	MES	C2-C3-N4	-3.43	104.93	110.12
5	B	405	MES	O3S-S-O1S	-2.93	104.78	111.61
5	B	405	MES	C2-C3-N4	-2.32	106.61	110.12
5	A	403	MES	C2-C3-N4	-2.26	106.70	110.12
5	A	403	MES	C6-C5-N4	-2.19	106.81	110.12
5	B	405	MES	O2S-S-O1S	-2.15	105.64	113.48
5	B	404	MES	O3S-S-O1S	-2.07	106.80	111.61
5	B	404	MES	C7-N4-C5	2.56	117.82	111.27
5	B	405	MES	O2S-S-C8	2.87	109.35	106.91
5	A	403	MES	C7-N4-C3	3.19	119.44	111.27
5	B	404	MES	O2S-S-C8	3.40	109.81	106.91
5	A	403	MES	C7-N4-C5	3.68	120.71	111.27
5	B	404	MES	C7-N4-C3	3.95	121.40	111.27

Continued on next page...

Continued from previous page...

Mol	Chain	Res	Type	Atoms	Z	Observed(°)	Ideal(°)
5	A	403	MES	O1S-S-C8	4.72	110.94	106.91
5	A	403	MES	C5-N4-C3	5.05	119.84	108.90
5	B	404	MES	C5-N4-C3	5.48	120.77	108.90
5	B	405	MES	C5-N4-C3	6.27	122.47	108.90
5	B	405	MES	O1S-S-C8	6.71	112.63	106.91
5	B	404	MES	O1S-S-C8	8.28	113.97	106.91
5	B	405	MES	C7-N4-C3	13.13	144.94	111.27

There are no chirality outliers.

There are no torsion outliers.

There are no ring outliers.

6 monomers are involved in 15 short contacts:

Mol	Chain	Res	Type	Clashes	Symm-Clashes
3	A	332	GOL	1	0
3	A	333	GOL	1	0
5	A	403	MES	3	0
3	B	331	GOL	1	0
3	B	332	GOL	2	0
5	B	404	MES	7	0

5.7 Other polymers [i](#)

There are no such residues in this entry.

5.8 Polymer linkage issues [i](#)

There are no chain breaks in this entry.

6 Fit of model and data

6.1 Protein, DNA and RNA chains

In the following table, the column labelled ‘#RSRZ> 2’ contains the number (and percentage) of RSRZ outliers, followed by percent RSRZ outliers for the chain as percentile scores relative to all X-ray entries and entries of similar resolution. The OWAB column contains the minimum, median, 95th percentile and maximum values of the occupancy-weighted average B-factor per residue. The column labelled ‘Q< 0.9’ lists the number of (and percentage) of residues with an average occupancy less than 0.9.

Mol	Chain	Analysed	<RSRZ>	#RSRZ>2	OWAB(Å ²)	Q<0.9
1	A	294/329 (89%)	0.54	29 (9%) 9 9	22, 25, 30, 34	7 (2%)
1	B	294/329 (89%)	0.46	24 (8%) 14 14	22, 24, 30, 33	6 (2%)
2	C	160/170 (94%)	1.18	38 (23%) 1 1	20, 26, 35, 38	5 (3%)
2	D	66/170 (38%)	1.33	17 (25%) 1 0	20, 25, 36, 37	1 (1%)
All	All	814/998 (81%)	0.70	108 (13%) 4 4	20, 25, 32, 38	19 (2%)

All (108) RSRZ outliers are listed below:

Mol	Chain	Res	Type	RSRZ
2	D	489	VAL	8.3
2	D	442	ASP	7.3
2	C	442	ASP	7.0
2	D	426	GLU	6.7
2	C	424	PRO	6.1
2	C	443	PRO	5.9
2	C	445	PRO	5.7
2	D	424	PRO	5.4
2	C	444	ALA	5.2
2	C	545	VAL	4.7
2	C	538	HIS	4.6
2	D	485	LEU	4.6
2	D	444	ALA	4.1
1	B	90	LEU	4.0
2	C	502	ASP	4.0
2	C	535	GLY	4.0
1	B	65	ILE	3.9
2	C	536	ALA	3.8
2	C	425	TYR	3.8
2	D	445	PRO	3.8
2	C	489	VAL	3.8

Continued on next page...

Continued from previous page...

Mol	Chain	Res	Type	RSRZ
1	A	65	ILE	3.7
2	D	425	TYR	3.7
1	A	89	PHE	3.7
2	C	539	ARG	3.6
2	C	503	SER	3.6
2	D	477	MET	3.5
2	C	490	GLU	3.5
1	A	90	LEU	3.5
2	D	441	GLU	3.4
1	A	93	TYR	3.4
1	B	75[A]	LEU	3.4
2	C	473	ASP	3.3
1	A	107	LEU	3.3
1	A	75[A]	LEU	3.3
2	D	487	LYS	3.2
2	D	481	ALA	3.2
1	A	120	LEU	3.2
2	C	441	GLU	3.2
1	B	93	TYR	3.2
1	A	103	THR	3.2
1	A	7	LEU	3.1
1	A	72	LEU	3.1
2	C	537	ALA	3.0
2	C	492	LEU	3.0
2	C	540	ASP	3.0
1	A	104	ILE	3.0
1	A	171	CYS	3.0
1	B	94	VAL	2.9
2	C	534	GLY	2.9
1	B	245[A]	CYS	2.9
2	C	426	GLU	2.9
1	B	220	ASP	2.8
2	C	533	GLU	2.8
1	B	277	ASP	2.8
2	C	505	GLY	2.8
1	B	89	PHE	2.7
1	A	245[A]	CYS	2.7
1	A	220	ASP	2.7
1	A	61	ILE	2.7
1	A	121	LEU	2.6
2	D	484	GLU	2.6
1	A	213	VAL	2.6

Continued on next page...

Continued from previous page...

Mol	Chain	Res	Type	RSRZ
1	B	72	LEU	2.6
1	B	107	LEU	2.6
2	C	582	ARG	2.6
2	C	532	THR	2.6
1	B	61	ILE	2.6
2	C	575	ARG	2.5
1	B	214	GLN	2.5
1	B	88	LEU	2.5
1	B	266	LEU	2.5
2	C	504	GLU	2.5
1	B	104	ILE	2.5
1	A	63	GLY	2.5
1	A	88	LEU	2.5
2	C	500	GLU	2.4
1	A	62	CYS	2.4
2	C	446	SER	2.4
1	B	63	GLY	2.3
1	A	277	ASP	2.3
1	B	121	LEU	2.3
1	A	106	LEU	2.3
2	C	496	PRO	2.3
2	D	427	PRO	2.3
2	D	488	ARG	2.2
1	A	190	MET	2.2
2	C	544	GLN	2.2
2	C	427	PRO	2.2
1	B	101	LEU	2.2
1	A	218[A]	GLU	2.2
1	B	120	LEU	2.2
2	C	547	ASP	2.2
2	C	530	THR	2.2
2	D	443	PRO	2.2
1	B	7	LEU	2.2
2	C	531	VAL	2.2
1	A	214	GLN	2.1
1	A	172	CYS	2.1
1	A	16	LEU	2.1
1	B	247	ALA	2.1
1	A	281	ALA	2.1
2	C	543	ILE	2.0
2	D	480	SER	2.0
1	B	300	ASP	2.0

Continued on next page...

Continued from previous page...

Mol	Chain	Res	Type	RSRZ
1	A	109	ALA	2.0
1	B	212	ASP	2.0
2	C	574	GLY	2.0

6.2 Non-standard residues in protein, DNA, RNA chains [i](#)

There are no non-standard protein/DNA/RNA residues in this entry.

6.3 Carbohydrates [i](#)

There are no carbohydrates in this entry.

6.4 Ligands [i](#)

In the following table, the Atoms column lists the number of modelled atoms in the group and the number defined in the chemical component dictionary. LLDF column lists the quality of electron density of the group with respect to its neighbouring residues in protein, DNA or RNA chains. The B-factors column lists the minimum, median, 95th percentile and maximum values of B factors of atoms in the group. The column labelled 'Q< 0.9' lists the number of atoms with occupancy less than 0.9.

Mol	Type	Chain	Res	Atoms	RSCC	RSR	LLDF	B-factors(Å ²)	Q<0.9
3	GOL	D	1	6/6	0.72	0.43	16.64	49,53,53,54	0
5	MES	B	405	12/12	0.83	0.20	4.75	20,20,47,47	6
5	MES	A	403	12/12	0.83	0.28	4.41	18,28,31,32	12
3	GOL	B	332	6/6	0.80	0.30	4.26	22,28,32,34	6
5	MES	B	404	12/12	0.89	0.27	3.63	13,30,35,36	12
3	GOL	A	333	6/6	0.72	0.29	3.30	39,41,42,43	0
3	GOL	A	332	6/6	0.76	0.25	3.06	24,28,30,33	6
4	MN	A	400	1/1	0.95	0.19	1.82	28,28,28,28	1
3	GOL	C	1	6/6	0.93	0.14	0.63	25,27,27,28	6
4	MN	B	401	1/1	0.98	0.15	-0.30	25,25,25,25	1
4	MN	B	403	1/1	1.00	0.06	-3.92	14,14,14,14	0
4	MN	A	402	1/1	0.99	0.05	-4.08	19,19,19,19	0
3	GOL	B	331	6/6	0.81	0.27	-	42,43,44,44	6
3	GOL	A	331	6/6	0.75	0.24	-	44,45,46,47	6

6.5 Other polymers [i](#)

There are no such residues in this entry.