



Full wwPDB X-ray Structure Validation Report ⓘ

Nov 10, 2016 – 02:52 PM EST

PDB ID : 5ENN
Title : The crystal structure of Human VPS34 in complex with a selective and potent inhibitor
Authors : Kearney, E.P.
Deposited on : 2015-11-09
Resolution : 2.70 Å(reported)

This is a Full wwPDB X-ray Structure Validation Report for a publicly released PDB entry.

We welcome your comments at validation@mail.wwpdb.org

A user guide is available at

<http://wwpdb.org/validation/2016/XrayValidationReportHelp>

with specific help available everywhere you see the ⓘ symbol.

The following versions of software and data (see [references ⓘ](#)) were used in the production of this report:

MolProbity : 4.02b-467
Mogul : 1.7.1 (RC1), CSD as537be (2016)
Xtriage (Phenix) : 1.9-1692
EDS : rb-20028320
Percentile statistics : 20151230.v01 (using entries in the PDB archive December 30th 2015)
Refmac : 5.8.0135
CCP4 : 6.5.0
Ideal geometry (proteins) : Engh & Huber (2001)
Ideal geometry (DNA, RNA) : Parkinson et al. (1996)
Validation Pipeline (wwPDB-VP) : rb-20028320

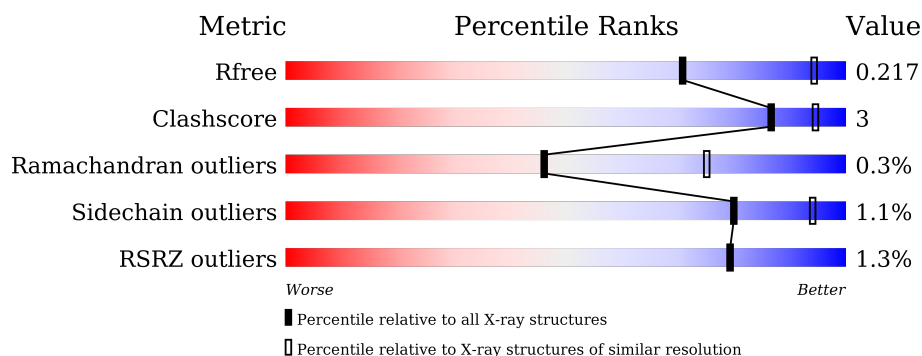
1 Overall quality at a glance

The following experimental techniques were used to determine the structure:

X-RAY DIFFRACTION

The reported resolution of this entry is 2.70 Å.

Percentile scores (ranging between 0-100) for global validation metrics of the entry are shown in the following graphic. The table shows the number of entries on which the scores are based.



Metric	Whole archive (#Entries)	Similar resolution (#Entries, resolution range(Å))
R_{free}	91344	2103 (2.70-2.70)
Clashscore	102246	2422 (2.70-2.70)
Ramachandran outliers	100387	2382 (2.70-2.70)
Sidechain outliers	100360	2382 (2.70-2.70)
RSRZ outliers	91569	2107 (2.70-2.70)

The table below summarises the geometric issues observed across the polymeric chains and their fit to the electron density. The red, orange, yellow and green segments on the lower bar indicate the fraction of residues that contain outliers for ≥ 3 , 2, 1 and 0 types of geometric quality criteria. A grey segment represents the fraction of residues that are not modelled. The numeric value for each fraction is indicated below the corresponding segment, with a dot representing fractions $\leq 5\%$. The upper red bar (where present) indicates the fraction of residues that have poor fit to the electron density. The numeric value is given above the bar.

Mol	Chain	Length	Quality of chain
1	A	625	<div> <div></div> <div>77%</div> <div>7%</div> <div>16%</div> </div>
1	B	625	<div> <div></div> <div>78%</div> <div>7%</div> <div>15%</div> </div>

The following table lists non-polymeric compounds, carbohydrate monomers and non-standard residues in protein, DNA, RNA chains that are outliers for geometric or electron-density-fit criteria:

Mol	Type	Chain	Res	Chirality	Geometry	Clashes	Electron density
4	GOL	B	903	-	-	-	X

2 Entry composition

There are 6 unique types of molecules in this entry. The entry contains 8831 atoms, of which 8 are hydrogens and 0 are deuteriums.

In the tables below, the ZeroOcc column contains the number of atoms modelled with zero occupancy, the AltConf column contains the number of residues with at least one atom in alternate conformation and the Trace column contains the number of residues modelled with at most 2 atoms.

- Molecule 1 is a protein called Phosphatidylinositol 3-kinase catalytic subunit type 3.

Mol	Chain	Residues	Atoms					ZeroOcc	AltConf	Trace
1	A	526	Total	C	N	O	S	0	2	0
			4231	2702	717	788	24			
1	B	531	Total	C	N	O	S	0	2	0
			4242	2711	715	792	24			

There are 60 discrepancies between the modelled and reference sequences:

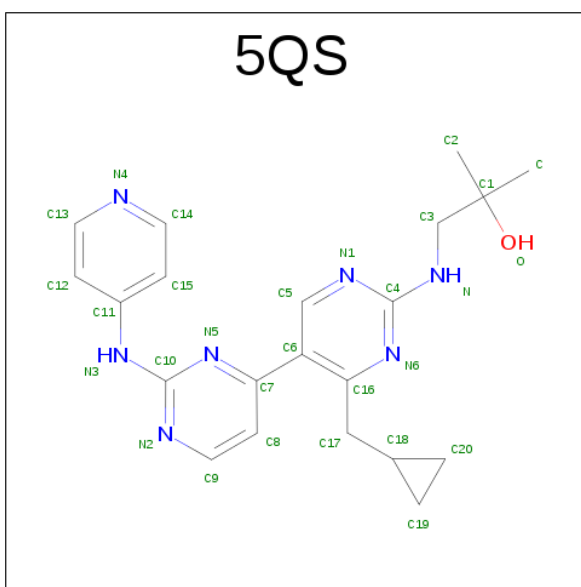
Chain	Residue	Modelled	Actual	Comment	Reference
A	263	MET	-	initiating methionine	UNP Q8NEB9
A	264	SER	-	expression tag	UNP Q8NEB9
A	265	TYR	-	expression tag	UNP Q8NEB9
A	266	TYR	-	expression tag	UNP Q8NEB9
A	267	HIS	-	expression tag	UNP Q8NEB9
A	268	HIS	-	expression tag	UNP Q8NEB9
A	269	HIS	-	expression tag	UNP Q8NEB9
A	270	HIS	-	expression tag	UNP Q8NEB9
A	271	HIS	-	expression tag	UNP Q8NEB9
A	272	HIS	-	expression tag	UNP Q8NEB9
A	273	ASP	-	expression tag	UNP Q8NEB9
A	274	TYR	-	expression tag	UNP Q8NEB9
A	275	ASP	-	expression tag	UNP Q8NEB9
A	276	ILE	-	expression tag	UNP Q8NEB9
A	277	PRO	-	expression tag	UNP Q8NEB9
A	278	THR	-	expression tag	UNP Q8NEB9
A	279	THR	-	expression tag	UNP Q8NEB9
A	280	GLU	-	expression tag	UNP Q8NEB9
A	281	ASN	-	expression tag	UNP Q8NEB9
A	282	LEU	-	expression tag	UNP Q8NEB9
A	283	TYR	-	expression tag	UNP Q8NEB9
A	284	PHE	-	expression tag	UNP Q8NEB9
A	285	GLN	-	expression tag	UNP Q8NEB9
A	286	GLY	-	expression tag	UNP Q8NEB9
A	287	ALA	-	expression tag	UNP Q8NEB9

Continued on next page...

Continued from previous page...

Chain	Residue	Modelled	Actual	Comment	Reference
A	288	MET	-	expression tag	UNP Q8NEB9
A	289	GLY	-	expression tag	UNP Q8NEB9
A	290	SER	-	expression tag	UNP Q8NEB9
A	291	GLY	-	expression tag	UNP Q8NEB9
A	292	ILE	-	expression tag	UNP Q8NEB9
B	263	MET	-	initiating methionine	UNP Q8NEB9
B	264	SER	-	expression tag	UNP Q8NEB9
B	265	TYR	-	expression tag	UNP Q8NEB9
B	266	TYR	-	expression tag	UNP Q8NEB9
B	267	HIS	-	expression tag	UNP Q8NEB9
B	268	HIS	-	expression tag	UNP Q8NEB9
B	269	HIS	-	expression tag	UNP Q8NEB9
B	270	HIS	-	expression tag	UNP Q8NEB9
B	271	HIS	-	expression tag	UNP Q8NEB9
B	272	HIS	-	expression tag	UNP Q8NEB9
B	273	ASP	-	expression tag	UNP Q8NEB9
B	274	TYR	-	expression tag	UNP Q8NEB9
B	275	ASP	-	expression tag	UNP Q8NEB9
B	276	ILE	-	expression tag	UNP Q8NEB9
B	277	PRO	-	expression tag	UNP Q8NEB9
B	278	THR	-	expression tag	UNP Q8NEB9
B	279	THR	-	expression tag	UNP Q8NEB9
B	280	GLU	-	expression tag	UNP Q8NEB9
B	281	ASN	-	expression tag	UNP Q8NEB9
B	282	LEU	-	expression tag	UNP Q8NEB9
B	283	TYR	-	expression tag	UNP Q8NEB9
B	284	PHE	-	expression tag	UNP Q8NEB9
B	285	GLN	-	expression tag	UNP Q8NEB9
B	286	GLY	-	expression tag	UNP Q8NEB9
B	287	ALA	-	expression tag	UNP Q8NEB9
B	288	MET	-	expression tag	UNP Q8NEB9
B	289	GLY	-	expression tag	UNP Q8NEB9
B	290	SER	-	expression tag	UNP Q8NEB9
B	291	GLY	-	expression tag	UNP Q8NEB9
B	292	ILE	-	expression tag	UNP Q8NEB9

- Molecule 2 is 1-[[4-(cyclopropylmethyl)-5-[2-(pyridin-4-ylamino)pyrimidin-4-yl]pyrimidin-2-yl]amino]-2-methyl-propan-2-ol (three-letter code: 5QS) (formula: C₂₁H₂₅N₇O).

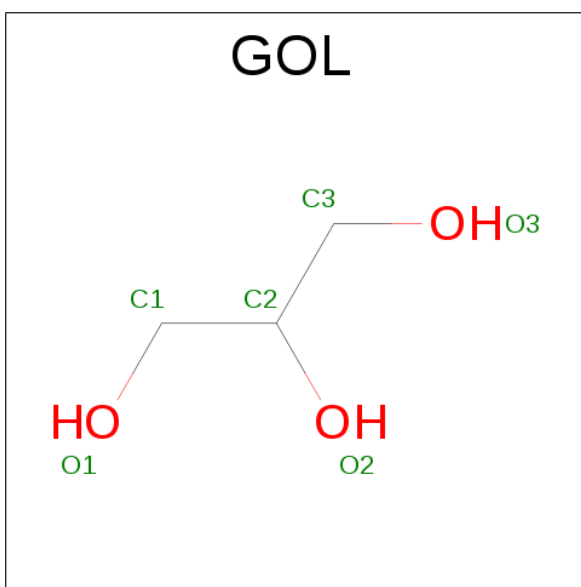


Mol	Chain	Residues	Atoms				ZeroOcc	AltConf
2	A	1	Total	C	N	O	0	0
			29	21	7	1		
2	B	1	Total	C	N	O	0	0
			29	21	7	1		

- Molecule 3 is SODIUM ION (three-letter code: NA) (formula: Na).

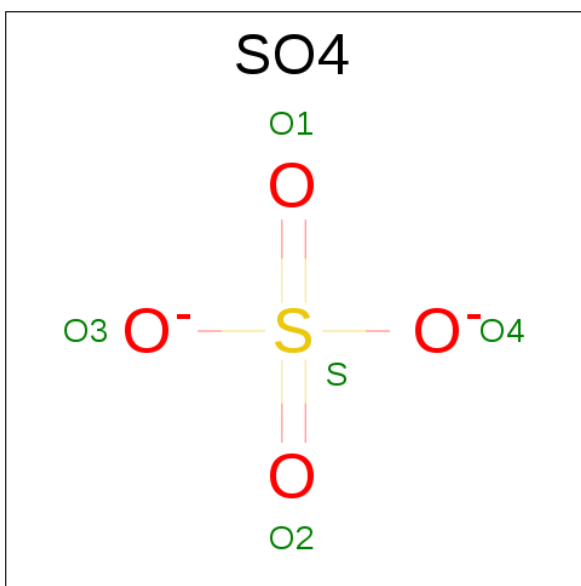
Mol	Chain	Residues	Atoms		ZeroOcc	AltConf
3	B	1	Total	Na	0	0
			1	1		
3	A	1	Total	Na	0	0
			1	1		

- Molecule 4 is GLYCEROL (three-letter code: GOL) (formula: C₃H₈O₃).



Mol	Chain	Residues	Atoms				ZeroOcc	AltConf
4	B	1	Total	C	H	O	0	0
			14	3	8	3		

- Molecule 5 is SULFATE ION (three-letter code: SO4) (formula: O₄S).



Mol	Chain	Residues	Atoms			ZeroOcc	AltConf
5	B	1	Total	O	S	0	0
			5	4	1		

- Molecule 6 is water.

Mol	Chain	Residues	Atoms		ZeroOcc	AltConf
6	A	139	Total 139	O 139	0	0
6	B	140	Total 140	O 140	0	0

4 Data and refinement statistics

Property	Value	Source
Space group	P 21 21 21	Depositor
Cell constants a, b, c, α , β , γ	113.73Å 114.48Å 143.90Å 90.00° 90.00° 90.00°	Depositor
Resolution (Å)	48.01 – 2.70 48.01 – 2.70	Depositor EDS
% Data completeness (in resolution range)	99.5 (48.01-2.70) 97.7 (48.01-2.70)	Depositor EDS
R_{merge}	(Not available)	Depositor
R_{sym}	(Not available)	Depositor
$\langle I/\sigma(I) \rangle$ ¹	3.23 (at 2.69Å)	Xtriage
Refinement program	BUSTER 2.11.6	Depositor
R, R_{free}	0.173 , 0.201 0.188 , 0.217	Depositor DCC
R_{free} test set	2615 reflections (5.30%)	DCC
Wilson B-factor (Å ²)	58.4	Xtriage
Anisotropy	0.122	Xtriage
Bulk solvent k_{sol} (e/Å ³), B_{sol} (Å ²)	0.32 , 57.5	EDS
L-test for twinning ²	$\langle L \rangle = 0.43$, $\langle L^2 \rangle = 0.26$	Xtriage
Estimated twinning fraction	0.298 for k,h,-l	Xtriage
F_o, F_c correlation	0.95	EDS
Total number of atoms	8831	wwPDB-VP
Average B, all atoms (Å ²)	73.0	wwPDB-VP

Xtriage's analysis on translational NCS is as follows: *The largest off-origin peak in the Patterson function is 3.14% of the height of the origin peak. No significant pseudotranslation is detected.*

¹Intensities estimated from amplitudes.

²Theoretical values of $\langle |L| \rangle$, $\langle L^2 \rangle$ for acentric reflections are 0.5, 0.333 respectively for untwinned datasets, and 0.375, 0.2 for perfectly twinned datasets.

5 Model quality

5.1 Standard geometry

Bond lengths and bond angles in the following residue types are not validated in this section: GOL, 5QS, SO4, NA

The Z score for a bond length (or angle) is the number of standard deviations the observed value is removed from the expected value. A bond length (or angle) with $|Z| > 5$ is considered an outlier worth inspection. RMSZ is the root-mean-square of all Z scores of the bond lengths (or angles).

Mol	Chain	Bond lengths		Bond angles	
		RMSZ	# Z >5	RMSZ	# Z >5
1	A	0.49	0/4313	0.67	0/5833
1	B	0.50	0/4323	0.67	0/5848
All	All	0.49	0/8636	0.67	0/11681

There are no bond length outliers.

There are no bond angle outliers.

There are no chirality outliers.

There are no planarity outliers.

5.2 Too-close contacts

In the following table, the Non-H and H(model) columns list the number of non-hydrogen atoms and hydrogen atoms in the chain respectively. The H(added) column lists the number of hydrogen atoms added and optimized by MolProbity. The Clashes column lists the number of clashes within the asymmetric unit, whereas Symm-Clashes lists symmetry related clashes.

Mol	Chain	Non-H	H(model)	H(added)	Clashes	Symm-Clashes
1	A	4231	0	4223	24	0
1	B	4242	0	4231	24	0
2	A	29	0	0	0	0
2	B	29	0	0	0	0
3	A	1	0	0	0	0
3	B	1	0	0	0	0
4	B	6	8	8	0	0
5	B	5	0	0	0	0
6	A	139	0	0	1	0
6	B	140	0	0	2	0
All	All	8823	8	8462	46	0

The all-atom clashscore is defined as the number of clashes found per 1000 atoms (including hydrogen atoms). The all-atom clashscore for this structure is 3.

All (46) close contacts within the same asymmetric unit are listed below, sorted by their clash magnitude.

Atom-1	Atom-2	Interatomic distance (Å)	Clash overlap (Å)
1:B:555:LEU:HB2	1:B:583:MET:HE1	1.76	0.66
1:A:537:VAL:HG11	6:B:1066:HOH:O	1.95	0.66
1:B:555:LEU:HB2	1:B:583:MET:CE	2.26	0.66
1:B:485:LYS:HE3	6:B:1116:HOH:O	1.95	0.65
1:A:556:MET:HE3	1:A:637:HIS:CE1	2.34	0.62
1:B:587:ASP:HA	1:B:602:ARG:O	2.00	0.61
1:A:580:ASN:ND2	1:A:587:ASP:HB3	2.16	0.60
1:B:741:VAL:O	1:B:778[B]:LYS:HD2	2.02	0.60
1:A:614:SER:HB2	6:A:1063:HOH:O	2.02	0.59
1:A:303:PRO:HD2	1:A:306:LYS:HB2	1.86	0.56
1:A:582:LYS:HG3	1:A:583:MET:N	2.20	0.55
1:A:477:THR:HG23	1:A:523:ARG:HH22	1.74	0.53
1:B:401:GLN:O	1:B:404:LYS:HG2	2.09	0.53
1:A:401:GLN:O	1:A:404:LYS:HG2	2.09	0.52
1:B:625:THR:HG22	1:B:627:ASP:H	1.75	0.51
1:B:351:LEU:O	1:B:355:TRP:HB2	2.10	0.51
1:B:305:THR:HG21	1:B:839:VAL:HG11	1.92	0.51
1:A:305:THR:HG21	1:A:839:VAL:HG11	1.94	0.50
1:B:351:LEU:HD23	1:B:355:TRP:CZ3	2.48	0.48
1:B:640:ASP:OD1	1:B:642:ARG:HD3	2.13	0.48
1:A:777:MET:HE2	1:A:862:LEU:HB3	1.95	0.48
1:A:351:LEU:O	1:A:355:TRP:HB2	2.14	0.47
1:B:331:THR:HG23	1:B:358:MET:HE3	1.97	0.47
1:B:385:ARG:HH12	1:B:473:GLN:HB2	1.80	0.47
1:B:351:LEU:HD23	1:B:355:TRP:HZ3	1.79	0.47
1:A:562:GLU:OE1	1:A:572:ARG:HG3	2.16	0.46
1:A:331:THR:HG23	1:A:358:MET:HE3	1.98	0.45
1:B:577:LEU:O	1:B:586:SER:HB2	2.16	0.45
1:B:374:PRO:O	1:B:378:ARG:HG2	2.17	0.45
1:A:706:LYS:HD3	1:A:707:TYR:CZ	2.52	0.44
1:B:706:LYS:HD3	1:B:707:TYR:CZ	2.52	0.44
1:A:477:THR:CG2	1:A:523:ARG:HH22	2.31	0.44
1:A:777:MET:CE	1:A:862:LEU:HB3	2.48	0.44
1:A:582:LYS:HG3	1:A:583:MET:H	1.81	0.44
1:A:587:ASP:CG	1:B:532:ASP:HB2	2.38	0.44
1:B:391:ASP:O	1:B:394[B]:MET:HB2	2.17	0.44
1:B:555:LEU:HB2	1:B:583:MET:HE2	1.99	0.43

Continued on next page...

Continued from previous page...

Atom-1	Atom-2	Interatomic distance (Å)	Clash overlap (Å)
1:A:587:ASP:OD2	1:B:532:ASP:HB2	2.19	0.43
1:A:385:ARG:HH12	1:A:473:GLN:HB2	1.83	0.43
1:B:718:SER:HB3	1:B:721:VAL:HB	2.01	0.42
1:B:658:LEU:HD22	1:B:663:LEU:HD23	2.02	0.42
1:A:658:LEU:HD22	1:A:663:LEU:HD23	2.01	0.42
1:B:614:SER:HB3	1:B:618:PRO:HD2	2.01	0.42
1:A:718:SER:HB3	1:A:721:VAL:HB	2.01	0.41
1:A:694:LEU:HD11	1:A:782:GLU:HG2	2.02	0.41
1:A:552:LEU:HD12	1:A:555:LEU:HD23	2.02	0.41

There are no symmetry-related clashes.

5.3 Torsion angles [i](#)

5.3.1 Protein backbone [i](#)

In the following table, the Percentiles column shows the percent Ramachandran outliers of the chain as a percentile score with respect to all X-ray entries followed by that with respect to entries of similar resolution.

The Analysed column shows the number of residues for which the backbone conformation was analysed, and the total number of residues.

Mol	Chain	Analysed	Favoured	Allowed	Outliers	Percentiles	
1	A	524/625 (84%)	509 (97%)	13 (2%)	2 (0%)	39	69
1	B	529/625 (85%)	514 (97%)	14 (3%)	1 (0%)	52	80
All	All	1053/1250 (84%)	1023 (97%)	27 (3%)	3 (0%)	46	75

All (3) Ramachandran outliers are listed below:

Mol	Chain	Res	Type
1	A	590	LEU
1	A	761	ASP
1	B	761	ASP

5.3.2 Protein sidechains [i](#)

In the following table, the Percentiles column shows the percent sidechain outliers of the chain as a percentile score with respect to all X-ray entries followed by that with respect to entries of similar resolution.

The Analysed column shows the number of residues for which the sidechain conformation was analysed, and the total number of residues.

Mol	Chain	Analysed	Rotameric	Outliers	Percentiles	
1	A	463/565 (82%)	458 (99%)	5 (1%)	80	94
1	B	462/565 (82%)	457 (99%)	5 (1%)	80	94
All	All	925/1130 (82%)	915 (99%)	10 (1%)	80	94

All (10) residues with a non-rotameric sidechain are listed below:

Mol	Chain	Res	Type
1	A	489	LEU
1	A	534	SER
1	A	591	ILE
1	A	653	LEU
1	A	867	VAL
1	B	309	THR
1	B	347	GLN
1	B	489	LEU
1	B	534	SER
1	B	804	THR

Some sidechains can be flipped to improve hydrogen bonding and reduce clashes. There are no such sidechains identified.

5.3.3 RNA [i](#)

There are no RNA molecules in this entry.

5.4 Non-standard residues in protein, DNA, RNA chains [i](#)

There are no non-standard protein/DNA/RNA residues in this entry.

5.5 Carbohydrates [i](#)

There are no carbohydrates in this entry.

5.6 Ligand geometry [i](#)

Of 6 ligands modelled in this entry, 2 are monoatomic - leaving 4 for Mogul analysis.

In the following table, the Counts columns list the number of bonds (or angles) for which Mogul statistics could be retrieved, the number of bonds (or angles) that are observed in the model and the number of bonds (or angles) that are defined in the chemical component dictionary. The Link column lists molecule types, if any, to which the group is linked. The Z score for a bond length (or angle) is the number of standard deviations the observed value is removed from the expected value. A bond length (or angle) with $|Z| > 2$ is considered an outlier worth inspection. RMSZ is the root-mean-square of all Z scores of the bond lengths (or angles).

Mol	Type	Chain	Res	Link	Bond lengths			Bond angles		
					Counts	RMSZ	$\# Z > 2$	Counts	RMSZ	$\# Z > 2$
2	5QS	A	901	-	31,32,32	1.73	8 (25%)	36,45,45	0.95	1 (2%)
2	5QS	B	901	-	31,32,32	1.79	6 (19%)	36,45,45	1.04	1 (2%)
4	GOL	B	903	-	5,5,5	0.14	0	5,5,5	0.25	0
5	SO4	B	904	-	4,4,4	0.20	0	6,6,6	0.21	0

In the following table, the Chirals column lists the number of chiral outliers, the number of chiral centers analysed, the number of these observed in the model and the number defined in the chemical component dictionary. Similar counts are reported in the Torsion and Rings columns. '-' means no outliers of that kind were identified.

Mol	Type	Chain	Res	Link	Chirals	Torsions	Rings
2	5QS	A	901	-	-	0/18/20/20	0/3/4/4
2	5QS	B	901	-	-	0/18/20/20	0/3/4/4
4	GOL	B	903	-	-	0/4/4/4	0/0/0/0
5	SO4	B	904	-	-	0/0/0/0	0/0/0/0

All (14) bond length outliers are listed below:

Mol	Chain	Res	Type	Atoms	Z	Observed(Å)	Ideal(Å)
2	A	901	5QS	C10-N3	2.04	1.40	1.36
2	B	901	5QS	C10-N3	2.14	1.40	1.36
2	A	901	5QS	C4-N	2.38	1.38	1.34
2	A	901	5QS	C12-C11	2.38	1.43	1.39
2	A	901	5QS	C4-N1	2.49	1.37	1.34
2	B	901	5QS	C4-N	2.62	1.38	1.34
2	A	901	5QS	C6-C16	2.63	1.45	1.40
2	A	901	5QS	C15-C11	2.78	1.43	1.39
2	A	901	5QS	C10-N2	2.78	1.38	1.34
2	B	901	5QS	C15-C11	2.81	1.43	1.39
2	B	901	5QS	C7-N5	3.22	1.39	1.34
2	B	901	5QS	C12-C11	3.42	1.44	1.39
2	A	901	5QS	C7-N5	4.35	1.41	1.34
2	B	901	5QS	C10-N2	5.83	1.42	1.34

All (2) bond angle outliers are listed below:

Mol	Chain	Res	Type	Atoms	Z	Observed(°)	Ideal(°)
2	B	901	5QS	N1-C4-N6	-3.01	123.46	126.66
2	A	901	5QS	C2-C1-C3	2.12	114.99	109.92

There are no chirality outliers.

There are no torsion outliers.

There are no ring outliers.

No monomer is involved in short contacts.

5.7 Other polymers [i](#)

There are no such residues in this entry.

5.8 Polymer linkage issues [i](#)

There are no chain breaks in this entry.

6 Fit of model and data [i](#)

6.1 Protein, DNA and RNA chains [i](#)

In the following table, the column labelled ‘#RSRZ> 2’ contains the number (and percentage) of RSRZ outliers, followed by percent RSRZ outliers for the chain as percentile scores relative to all X-ray entries and entries of similar resolution. The OWAB column contains the minimum, median, 95th percentile and maximum values of the occupancy-weighted average B-factor per residue. The column labelled ‘Q< 0.9’ lists the number of (and percentage) of residues with an average occupancy less than 0.9.

Mol	Chain	Analysed	<RSRZ>	#RSRZ>2	OWAB(Å ²)	Q<0.9
1	A	526/625 (84%)	0.11	8 (1%) 76 76	37, 69, 120, 165	0
1	B	531/625 (84%)	0.10	6 (1%) 82 83	37, 69, 125, 206	0
All	All	1057/1250 (84%)	0.10	14 (1%) 79 79	37, 69, 124, 206	0

All (14) RSRZ outliers are listed below:

Mol	Chain	Res	Type	RSRZ
1	B	323	LEU	3.9
1	A	583	MET	3.4
1	B	326	GLN	3.0
1	A	316	VAL	2.9
1	A	376	VAL	2.6
1	B	290	SER	2.5
1	A	308	LEU	2.5
1	A	779	LEU	2.4
1	A	857	HIS	2.4
1	A	323	LEU	2.4
1	B	562	GLU	2.3
1	B	292	ILE	2.2
1	A	332	LYS	2.2
1	B	779	LEU	2.1

6.2 Non-standard residues in protein, DNA, RNA chains [i](#)

There are no non-standard protein/DNA/RNA residues in this entry.

6.3 Carbohydrates [i](#)

There are no carbohydrates in this entry.

6.4 Ligands [i](#)

In the following table, the Atoms column lists the number of modelled atoms in the group and the number defined in the chemical component dictionary. LLDF column lists the quality of electron density of the group with respect to its neighbouring residues in protein, DNA or RNA chains. The B-factors column lists the minimum, median, 95th percentile and maximum values of B factors of atoms in the group. The column labelled 'Q< 0.9' lists the number of atoms with occupancy less than 0.9.

Mol	Type	Chain	Res	Atoms	RSCC	RSR	LLDF	B-factors(Å ²)	Q<0.9
4	GOL	B	903	6/6	0.82	0.29	3.35	97,99,100,100	0
2	5QS	B	901	29/29	0.97	0.22	1.28	32,42,50,51	0
5	SO4	B	904	5/5	0.93	0.21	0.85	106,107,109,110	0
2	5QS	A	901	29/29	0.97	0.18	-0.11	34,44,50,53	0
3	NA	A	902	1/1	0.88	0.20	-	62,62,62,62	0
3	NA	B	902	1/1	0.96	0.23	-	69,69,69,69	0

6.5 Other polymers [i](#)

There are no such residues in this entry.