



Full wwPDB X-ray Structure Validation Report ⓘ

Apr 3, 2016 – 09:13 AM EDT

PDB ID : 5ENS
Title : Rhodamine bound structure of bacterial efflux pump.
Authors : Sjuts, H.; Ornik, A.R.; Pos, K.M.
Deposited on : 2015-11-09
Resolution : 2.80 Å(reported)

This is a Full wwPDB X-ray Structure Validation Report for a publicly released PDB entry.
We welcome your comments at validation@mail.wwpdb.org
A user guide is available at
<http://wwpdb.org/validation/2016/XrayValidationReportHelp>
with specific help available everywhere you see the ⓘ symbol.

The following versions of software and data (see [references ⓘ](#)) were used in the production of this report:

MolProbity : 4.02b-467
Mogul : 1.7.1 (RC1), CSD as537be (2016)
Xtriage (Phenix) : 1.9-1692
EDS : rb-20027107
Percentile statistics : 20151230.v01 (using entries in the PDB archive December 30th 2015)
Refmac : 5.8.0135
CCP4 : 6.5.0
Ideal geometry (proteins) : Engh & Huber (2001)
Ideal geometry (DNA, RNA) : Parkinson et al. (1996)
Validation Pipeline (wwPDB-VP) : rb-20027107

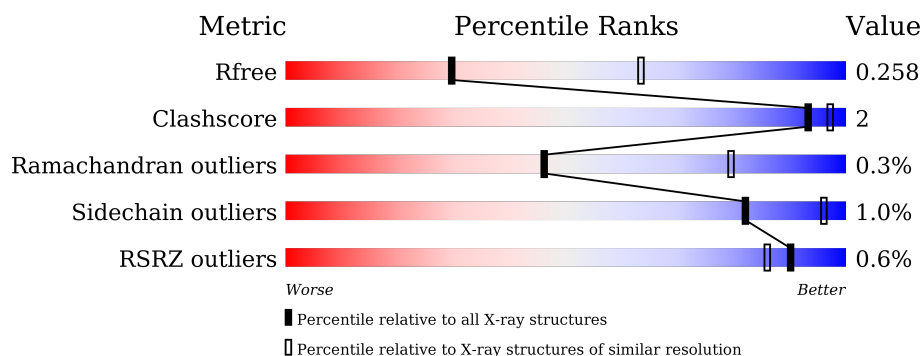
1 Overall quality at a glance

The following experimental techniques were used to determine the structure:

X-RAY DIFFRACTION

The reported resolution of this entry is 2.80 Å.

Percentile scores (ranging between 0-100) for global validation metrics of the entry are shown in the following graphic. The table shows the number of entries on which the scores are based.



Metric	Whole archive (#Entries)	Similar resolution (#Entries, resolution range(Å))
R_{free}	91344	2393 (2.80-2.80)
Clashscore	102246	2827 (2.80-2.80)
Ramachandran outliers	100387	2782 (2.80-2.80)
Sidechain outliers	100360	2784 (2.80-2.80)
RSRZ outliers	91569	2404 (2.80-2.80)

The table below summarises the geometric issues observed across the polymeric chains and their fit to the electron density. The red, orange, yellow and green segments on the lower bar indicate the fraction of residues that contain outliers for ≥ 3 , 2, 1 and 0 types of geometric quality criteria. A grey segment represents the fraction of residues that are not modelled. The numeric value for each fraction is indicated below the corresponding segment, with a dot representing fractions $\leq 5\%$. The upper red bar (where present) indicates the fraction of residues that have poor fit to the electron density. The numeric value is given above the bar.

Mol	Chain	Length	Quality of chain
1	A	609	<div><div></div><div>89%</div><div>6%</div><div>5%</div></div>
1	B	609	<div><div></div><div>88%</div><div>7%</div><div>5%</div></div>
1	C	609	<div><div></div><div>89%</div><div>5%</div><div>6%</div></div>
2	D	169	<div><div></div><div>86%</div><div>6%</div><div>8%</div></div>
2	E	169	<div><div></div><div>89%</div><div>•</div><div>8%</div></div>
2	F	169	<div><div></div><div>91%</div><div>•</div><div>8%</div></div>

The following table lists non-polymeric compounds, carbohydrate monomers and non-standard residues in protein, DNA, RNA chains that are outliers for geometric or electron-density-fit criteria:

Mol	Type	Chain	Res	Chirality	Geometry	Clashes	Electron density
3	RHQ	C	901	-	-	-	X

2 Entry composition

There are 4 unique types of molecules in this entry. The entry contains 17010 atoms, of which 0 are hydrogens and 0 are deuteriums.

In the tables below, the ZeroOcc column contains the number of atoms modelled with zero occupancy, the AltConf column contains the number of residues with at least one atom in alternate conformation and the Trace column contains the number of residues modelled with at most 2 atoms.

- Molecule 1 is a protein called Multidrug efflux pump subunit AcrB, Multidrug efflux pump subunit AcrB.

Mol	Chain	Residues	Atoms					ZeroOcc	AltConf	Trace
1	A	580	Total	C	N	O	S	0	0	0
			4419	2774	749	874	22			
1	B	578	Total	C	N	O	S	0	0	0
			4404	2765	746	871	22			
1	C	575	Total	C	N	O	S	0	0	0
			4370	2745	742	861	22			

There are 27 discrepancies between the modelled and reference sequences:

Chain	Residue	Modelled	Actual	Comment	Reference
A	552	GLY	-	linker	UNP P31224
A	553	GLY	-	linker	UNP P31224
A	554	SER	-	linker	UNP P31224
A	555	GLY	-	linker	UNP P31224
A	556	GLY	-	linker	UNP P31224
A	557	SER	-	linker	UNP P31224
A	558	GLY	-	linker	UNP P31224
A	559	GLY	-	linker	UNP P31224
A	560	SER	-	linker	UNP P31224
B	552	GLY	-	linker	UNP P31224
B	553	GLY	-	linker	UNP P31224
B	554	SER	-	linker	UNP P31224
B	555	GLY	-	linker	UNP P31224
B	556	GLY	-	linker	UNP P31224
B	557	SER	-	linker	UNP P31224
B	558	GLY	-	linker	UNP P31224
B	559	GLY	-	linker	UNP P31224
B	560	SER	-	linker	UNP P31224
C	552	GLY	-	linker	UNP P31224
C	553	GLY	-	linker	UNP P31224
C	554	SER	-	linker	UNP P31224
C	555	GLY	-	linker	UNP P31224

Continued on next page...

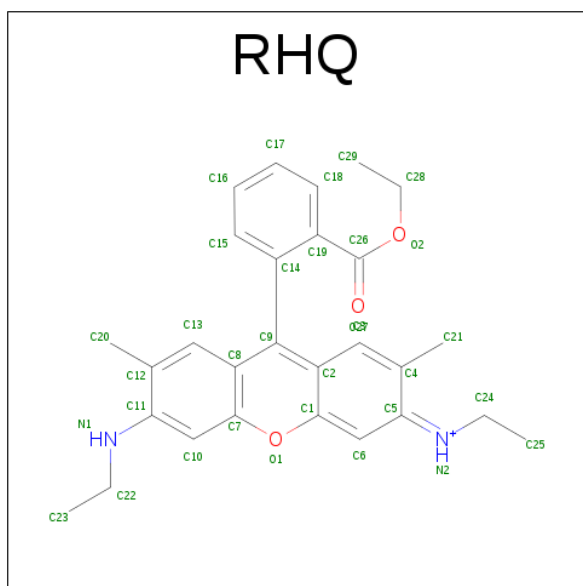
Continued from previous page...

Chain	Residue	Modelled	Actual	Comment	Reference
C	556	GLY	-	linker	UNP P31224
C	557	SER	-	linker	UNP P31224
C	558	GLY	-	linker	UNP P31224
C	559	GLY	-	linker	UNP P31224
C	560	SER	-	linker	UNP P31224

- Molecule 2 is a protein called DARPin.

Mol	Chain	Residues	Atoms					ZeroOcc	AltConf	Trace
2	D	156	Total	C	N	O	S	0	0	0
			1177	741	206	229	1			
2	E	156	Total	C	N	O	S	0	0	0
			1177	741	206	229	1			
2	F	156	Total	C	N	O	S	0	0	0
			1177	741	206	229	1			

- Molecule 3 is RHODAMINE 6G (three-letter code: RHQ) (formula: $C_{28}H_{31}N_2O_3$).



Mol	Chain	Residues	Atoms				ZeroOcc	AltConf
3	C	1	Total	C	N	O	0	0
			33	28	2	3		

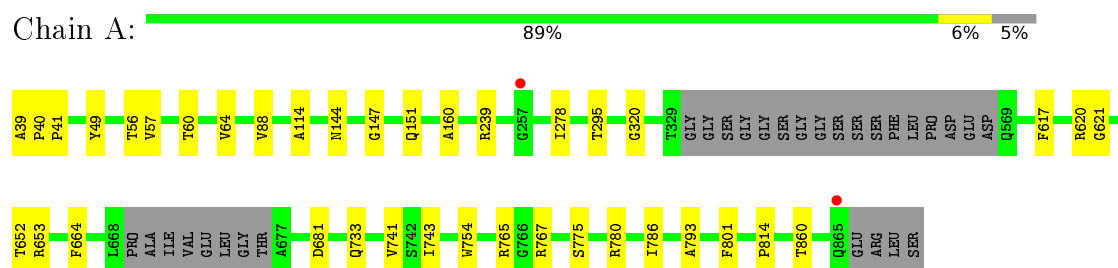
- Molecule 4 is water.

Mol	Chain	Residues	Atoms		ZeroOcc	AltConf
4	A	74	Total 74	O 74	0	0
4	B	82	Total 82	O 82	0	0
4	C	76	Total 76	O 76	0	0
4	D	6	Total 6	O 6	0	0
4	E	7	Total 7	O 7	0	0
4	F	8	Total 8	O 8	0	0

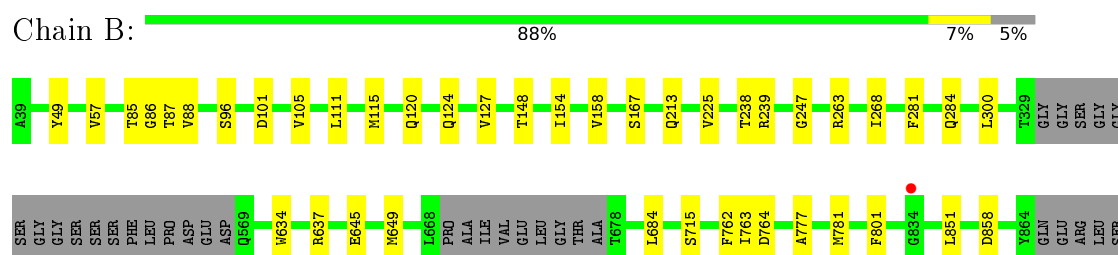
3 Residue-property plots

These plots are drawn for all protein, RNA and DNA chains in the entry. The first graphic for a chain summarises the proportions of errors displayed in the second graphic. The second graphic shows the sequence view annotated by issues in geometry and electron density. Residues are color-coded according to the number of geometric quality criteria for which they contain at least one outlier: green = 0, yellow = 1, orange = 2 and red = 3 or more. A red dot above a residue indicates a poor fit to the electron density ($RSRZ > 2$). Stretches of 2 or more consecutive residues without any outlier are shown as a green connector. Residues present in the sample, but not in the model, are shown in grey.

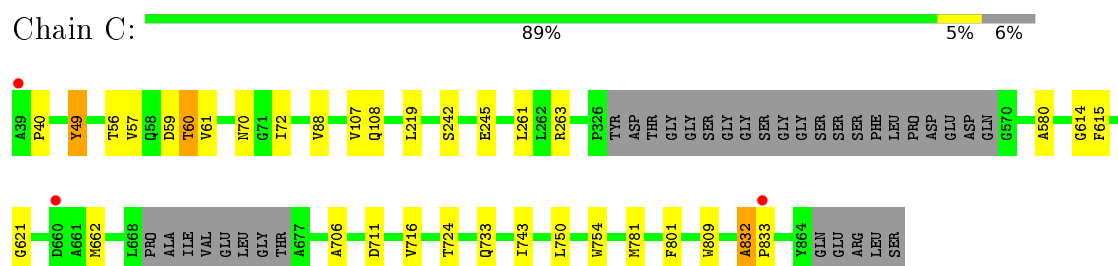
- Molecule 1: Multidrug efflux pump subunit AcrB, Multidrug efflux pump subunit AcrB



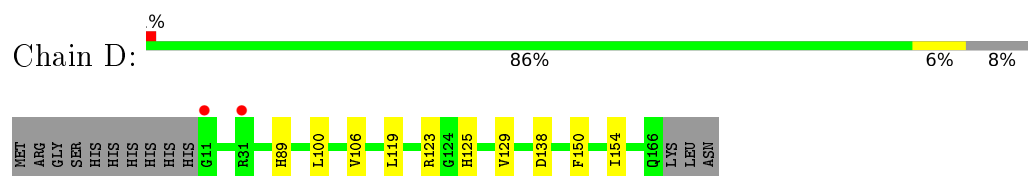
- Molecule 1: Multidrug efflux pump subunit AcrB, Multidrug efflux pump subunit AcrB



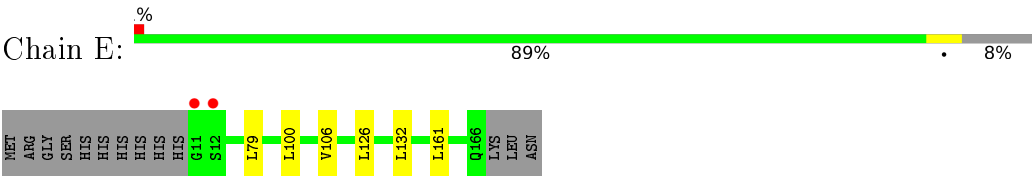
- Molecule 1: Multidrug efflux pump subunit AcrB, Multidrug efflux pump subunit AcrB



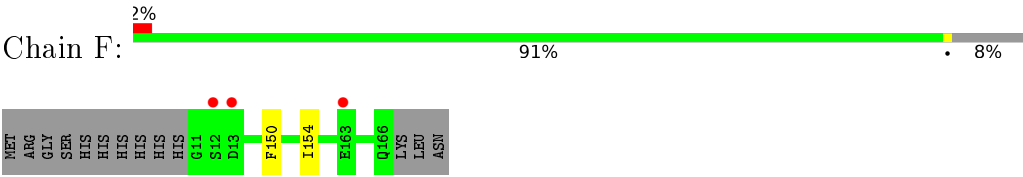
- Molecule 2: DARPin



● Molecule 2: DARPin



● Molecule 2: DARPin



4 Data and refinement statistics

Property	Value	Source
Space group	P 21 21 21	Depositor
Cell constants a, b, c, α , β , γ	108.65Å 145.25Å 174.15Å 90.00° 90.00° 90.00°	Depositor
Resolution (Å)	50.00 – 2.80 49.62 – 2.80	Depositor EDS
% Data completeness (in resolution range)	99.8 (50.00-2.80) 99.9 (49.62-2.80)	Depositor EDS
R_{merge}	0.28	Depositor
R_{sym}	(Not available)	Depositor
$\langle I/\sigma(I) \rangle$ ¹	1.73 (at 2.81Å)	Xtriage
Refinement program	REFMAC 5.8.0135	Depositor
R, R_{free}	0.194 , 0.258 0.198 , 0.258	Depositor DCC
R_{free} test set	3375 reflections (5.19%)	DCC
Wilson B-factor (Å ²)	38.0	Xtriage
Anisotropy	0.419	Xtriage
Bulk solvent k_{sol} (e/Å ³), B_{sol} (Å ²)	0.30 , 30.5	EDS
Estimated twinning fraction	No twinning to report.	Xtriage
L-test for twinning ²	$\langle L \rangle = 0.49$, $\langle L^2 \rangle = 0.32$	Xtriage
Outliers	0 of 68417 reflections	Xtriage
F_o, F_c correlation	0.93	EDS
Total number of atoms	17010	wwPDB-VP
Average B, all atoms (Å ²)	43.0	wwPDB-VP

Xtriage's analysis on translational NCS is as follows: *The largest off-origin peak in the Patterson function is 2.64% of the height of the origin peak. No significant pseudotranslation is detected.*

¹Intensities estimated from amplitudes.

²Theoretical values of $\langle |L| \rangle$, $\langle L^2 \rangle$ for acentric reflections are 0.5, 0.375 respectively for untwinned datasets, and 0.333, 0.2 for perfectly twinned datasets.

5 Model quality

5.1 Standard geometry

Bond lengths and bond angles in the following residue types are not validated in this section: RHQ

The Z score for a bond length (or angle) is the number of standard deviations the observed value is removed from the expected value. A bond length (or angle) with $|Z| > 5$ is considered an outlier worth inspection. RMSZ is the root-mean-square of all Z scores of the bond lengths (or angles).

Mol	Chain	Bond lengths		Bond angles	
		RMSZ	# $ Z > 5$	RMSZ	# $ Z > 5$
1	A	0.60	0/4494	0.79	3/6089 (0.0%)
1	B	0.57	0/4478	0.80	4/6066 (0.1%)
1	C	0.57	0/4444	0.74	0/6021
2	D	0.56	0/1196	0.70	1/1626 (0.1%)
2	E	0.57	0/1196	0.74	0/1626
2	F	0.57	0/1196	0.72	0/1626
All	All	0.58	0/17004	0.77	8/23054 (0.0%)

There are no bond length outliers.

All (8) bond angle outliers are listed below:

Mol	Chain	Res	Type	Atoms	Z	Observed(°)	Ideal(°)
1	B	263	ARG	NE-CZ-NH1	6.57	123.58	120.30
2	D	123	ARG	NE-CZ-NH1	5.71	123.15	120.30
1	B	239	ARG	NE-CZ-NH2	-5.66	117.47	120.30
1	A	239	ARG	NE-CZ-NH2	-5.55	117.52	120.30
1	A	765	ARG	NE-CZ-NH1	5.42	123.01	120.30
1	B	263	ARG	NE-CZ-NH2	-5.32	117.64	120.30
1	B	637	ARG	NE-CZ-NH1	5.30	122.95	120.30
1	A	653	ARG	NE-CZ-NH1	5.03	122.82	120.30

There are no chirality outliers.

There are no planarity outliers.

5.2 Too-close contacts

In the following table, the Non-H and H(model) columns list the number of non-hydrogen atoms and hydrogen atoms in the chain respectively. The H(added) column lists the number of hydrogen

atoms added and optimized by MolProbity. The Clashes column lists the number of clashes within the asymmetric unit, whereas Symm-Clashes lists symmetry related clashes.

Mol	Chain	Non-H	H(model)	H(added)	Clashes	Symm-Clashes
1	A	4419	0	4356	18	0
1	B	4404	0	4340	19	0
1	C	4370	0	4316	20	0
2	D	1177	0	1159	5	0
2	E	1177	0	1159	4	0
2	F	1177	0	1159	2	0
3	C	33	0	31	0	0
4	A	74	0	0	0	0
4	B	82	0	0	0	0
4	C	76	0	0	0	0
4	D	6	0	0	0	0
4	E	7	0	0	0	0
4	F	8	0	0	0	0
All	All	17010	0	16520	62	0

The all-atom clashscore is defined as the number of clashes found per 1000 atoms (including hydrogen atoms). The all-atom clashscore for this structure is 2.

All (62) close contacts within the same asymmetric unit are listed below, sorted by their clash magnitude.

Atom-1	Atom-2	Interatomic distance (Å)	Clash overlap (Å)
1:B:86:GLY:C	1:B:86:GLY:N	2.28	0.87
1:B:85:THR:HB	1:B:87:THR:HG22	1.65	0.78
1:A:733:GLN:OE1	1:A:743:ILE:HD11	1.83	0.78
1:C:56:THR:O	1:C:60:THR:HB	1.93	0.68
1:B:57:VAL:CG1	1:B:88:VAL:HG22	2.27	0.64
1:A:681:ASP:HB3	1:A:860:THR:O	1.96	0.64
1:A:39:ALA:HB1	1:A:40:PRO:CD	2.28	0.63
1:B:111:LEU:HD21	1:B:127:VAL:HG21	1.80	0.62
2:D:150:PHE:CE2	2:D:154:ILE:HD11	2.36	0.61
1:C:57:VAL:CG1	1:C:88:VAL:HG22	2.34	0.57
1:C:832:ALA:HB1	1:C:833:PRO:HD2	1.89	0.55
1:B:645:GLU:O	1:B:649:MET:HG3	2.07	0.54
1:B:213:GLN:HE22	1:B:238:THR:HG22	1.72	0.54
1:B:777:ALA:O	1:B:781:MET:HG2	2.09	0.51
1:A:620:ARG:HG2	1:A:621:GLY:N	2.25	0.51
2:D:100:LEU:HD22	2:D:106:VAL:HG22	1.93	0.50
1:A:39:ALA:HB1	1:A:40:PRO:HD3	1.92	0.49
1:C:72:ILE:HD13	1:C:107:VAL:HG22	1.94	0.49

Continued on next page...

Continued from previous page...

Atom-1	Atom-2	Interatomic distance (Å)	Clash overlap (Å)
2:E:100:LEU:HD21	2:E:106:VAL:HG23	1.93	0.49
1:B:120:GLN:HE21	1:B:124:GLN:HE21	1.59	0.48
1:C:261:LEU:HD12	1:C:263:ARG:NH2	2.28	0.48
1:B:247:GLY:HA2	1:B:268:ILE:CD1	2.43	0.47
1:C:750:LEU:HD12	1:C:754:TRP:CD1	2.48	0.47
1:A:64:VAL:HG12	1:A:114:ALA:HB1	1.97	0.47
1:A:151:GLN:HE22	1:A:278:ILE:HG23	1.80	0.47
1:C:706:ALA:HB1	1:C:716:VAL:HG21	1.96	0.47
1:A:57:VAL:CG1	1:A:88:VAL:CG2	2.94	0.46
1:A:56:THR:O	1:A:60:THR:HB	2.16	0.46
1:C:49:TYR:HE2	1:C:60:THR:HG21	1.80	0.46
1:A:754:TRP:CZ2	1:A:786:ILE:HD13	2.51	0.45
1:B:213:GLN:HG3	1:C:56:THR:HG23	1.98	0.45
1:C:809:TRP:CD1	2:E:79:LEU:HD12	2.52	0.45
1:B:154:ILE:O	1:B:158:VAL:HG23	2.17	0.45
1:A:652:THR:HG23	1:A:664:PHE:HB2	1.99	0.44
1:C:832:ALA:HB1	1:C:833:PRO:CD	2.47	0.44
2:E:100:LEU:HD11	2:E:132:LEU:HD23	2.00	0.44
1:A:151:GLN:NE2	1:A:278:ILE:HG23	2.33	0.44
1:A:41:PRO:HB3	1:A:295:THR:HG21	2.00	0.44
1:A:754:TRP:CZ3	1:C:219:LEU:HD23	2.53	0.44
2:D:125:HIS:O	2:D:129:VAL:HG23	2.18	0.44
1:A:775:SER:HB3	1:A:780:ARG:HD3	2.00	0.44
1:C:60:THR:HG22	1:C:61:VAL:HG23	1.99	0.43
1:B:762:PHE:CZ	1:B:764:ASP:HB2	2.54	0.43
1:C:580:ALA:HB1	1:C:724:THR:HG22	2.01	0.43
1:A:741:VAL:HG12	1:A:793:ALA:HB2	2.00	0.43
2:F:150:PHE:CZ	2:F:154:ILE:HD11	2.53	0.43
1:B:101:ASP:O	1:B:105:VAL:HG23	2.19	0.43
1:B:281:PHE:O	1:B:284:GLN:HG2	2.18	0.43
1:B:684:LEU:HD11	1:B:851:LEU:HD13	2.00	0.43
1:C:242:SER:OG	1:C:245:GLU:HG3	2.19	0.42
2:D:100:LEU:CD2	2:D:106:VAL:HG22	2.48	0.42
1:C:614:GLY:HA2	1:C:621:GLY:O	2.20	0.42
1:B:167:SER:HB3	1:C:70:ASN:CB	2.50	0.42
1:C:733:GLN:OE1	1:C:743:ILE:HD11	2.20	0.41
1:B:225:VAL:HG22	1:C:781:MET:HG3	2.02	0.41
2:D:89:HIS:CD2	2:D:119:LEU:HD22	2.55	0.41
1:A:160:ALA:HB1	1:A:767:ARG:HD3	2.03	0.41
2:E:126:LEU:HD23	2:E:161:LEU:HD13	2.03	0.41
1:A:144:ASN:HA	1:A:320:GLY:O	2.20	0.41

Continued on next page...

Continued from previous page...

Atom-1	Atom-2	Interatomic distance (Å)	Clash overlap (Å)
1:B:300:LEU:HD23	1:B:300:LEU:HA	1.94	0.41
2:F:150:PHE:CE2	2:F:154:ILE:HD11	2.56	0.40
1:B:763:ILE:HD11	1:C:59:ASP:HB3	2.02	0.40

There are no symmetry-related clashes.

5.3 Torsion angles [i](#)

5.3.1 Protein backbone [i](#)

In the following table, the Percentiles column shows the percent Ramachandran outliers of the chain as a percentile score with respect to all X-ray entries followed by that with respect to entries of similar resolution.

The Analysed column shows the number of residues for which the backbone conformation was analysed, and the total number of residues.

Mol	Chain	Analysed	Favoured	Allowed	Outliers	Percentiles	
1	A	574/609 (94%)	553 (96%)	20 (4%)	1 (0%)	52	84
1	B	571/609 (94%)	544 (95%)	25 (4%)	2 (0%)	39	74
1	C	569/609 (93%)	548 (96%)	19 (3%)	2 (0%)	39	74
2	D	154/169 (91%)	148 (96%)	5 (3%)	1 (1%)	30	65
2	E	154/169 (91%)	147 (96%)	7 (4%)	0	100	100
2	F	154/169 (91%)	149 (97%)	5 (3%)	0	100	100
All	All	2176/2334 (93%)	2089 (96%)	81 (4%)	6 (0%)	46	79

All (6) Ramachandran outliers are listed below:

Mol	Chain	Res	Type
2	D	138	ASP
1	A	147	GLY
1	B	715	SER
1	C	40	PRO
1	B	634	TRP
1	C	832	ALA

5.3.2 Protein sidechains ⓘ

In the following table, the Percentiles column shows the percent sidechain outliers of the chain as a percentile score with respect to all X-ray entries followed by that with respect to entries of similar resolution.

The Analysed column shows the number of residues for which the sidechain conformation was analysed, and the total number of residues.

Mol	Chain	Analysed	Rotameric	Outliers	Percentiles	
1	A	471/492 (96%)	467 (99%)	4 (1%)	86	97
1	B	470/492 (96%)	464 (99%)	6 (1%)	76	94
1	C	465/492 (94%)	458 (98%)	7 (2%)	72	93
2	D	120/132 (91%)	120 (100%)	0	100	100
2	E	120/132 (91%)	120 (100%)	0	100	100
2	F	120/132 (91%)	120 (100%)	0	100	100
All	All	1766/1872 (94%)	1749 (99%)	17 (1%)	82	96

All (17) residues with a non-rotameric sidechain are listed below:

Mol	Chain	Res	Type
1	A	49	TYR
1	A	617	PHE
1	A	801	PHE
1	A	814	PRO
1	B	49	TYR
1	B	96	SER
1	B	115	MET
1	B	148	THR
1	B	801	PHE
1	B	858	ASP
1	C	49	TYR
1	C	60	THR
1	C	108	GLN
1	C	615	PHE
1	C	662	MET
1	C	711	ASP
1	C	801	PHE

Some sidechains can be flipped to improve hydrogen bonding and reduce clashes. All (8) such sidechains are listed below:

Mol	Chain	Res	Type
1	A	151	GLN
1	A	298	ASN
1	A	622	GLN
1	B	124	GLN
1	B	726	GLN
1	C	657	GLN
2	D	89	HIS
2	E	69	ASN

5.3.3 RNA ⓘ

There are no RNA molecules in this entry.

5.4 Non-standard residues in protein, DNA, RNA chains ⓘ

There are no non-standard protein/DNA/RNA residues in this entry.

5.5 Carbohydrates ⓘ

There are no carbohydrates in this entry.

5.6 Ligand geometry ⓘ

1 ligand is modelled in this entry.

In the following table, the Counts columns list the number of bonds (or angles) for which Mogul statistics could be retrieved, the number of bonds (or angles) that are observed in the model and the number of bonds (or angles) that are defined in the chemical component dictionary. The Link column lists molecule types, if any, to which the group is linked. The Z score for a bond length (or angle) is the number of standard deviations the observed value is removed from the expected value. A bond length (or angle) with $|Z| > 2$ is considered an outlier worth inspection. RMSZ is the root-mean-square of all Z scores of the bond lengths (or angles).

Mol	Type	Chain	Res	Link	Bond lengths			Bond angles		
					Counts	RMSZ	$\# Z > 2$	Counts	RMSZ	$\# Z > 2$
3	RHQ	C	901	-	34,36,36	2.79	7 (20%)	39,51,51	1.64	6 (15%)

In the following table, the Chirals column lists the number of chiral outliers, the number of chiral centers analysed, the number of these observed in the model and the number defined in the chemical component dictionary. Similar counts are reported in the Torsion and Rings columns. '-' means no outliers of that kind were identified.

Mol	Type	Chain	Res	Link	Chirals	Torsions	Rings
3	RHQ	C	901	-	-	0/15/21/21	0/4/4/4

All (7) bond length outliers are listed below:

Mol	Chain	Res	Type	Atoms	Z	Observed(Å)	Ideal(Å)
3	C	901	RHQ	O1-C1	3.22	1.39	1.35
3	C	901	RHQ	C9-C8	3.88	1.50	1.43
3	C	901	RHQ	C11-C12	5.60	1.51	1.40
3	C	901	RHQ	O2-C26	6.26	1.47	1.33
3	C	901	RHQ	C19-C14	6.80	1.51	1.40
3	C	901	RHQ	C8-C7	6.87	1.50	1.41
3	C	901	RHQ	C2-C9	6.96	1.49	1.39

All (6) bond angle outliers are listed below:

Mol	Chain	Res	Type	Atoms	Z	Observed($^{\circ}$)	Ideal($^{\circ}$)
3	C	901	RHQ	O2-C26-O27	-2.62	118.53	123.65
3	C	901	RHQ	C21-C4-C3	-2.05	117.94	120.85
3	C	901	RHQ	C13-C12-C11	2.83	120.84	118.26
3	C	901	RHQ	O1-C7-C10	3.49	120.63	116.18
3	C	901	RHQ	O2-C26-C19	3.69	118.97	112.17
3	C	901	RHQ	C28-O2-C26	3.93	125.05	116.46

There are no chirality outliers.

There are no torsion outliers.

There are no ring outliers.

No monomer is involved in short contacts.

5.7 Other polymers [i](#)

There are no such residues in this entry.

5.8 Polymer linkage issues [i](#)

There are no chain breaks in this entry.

6 Fit of model and data [i](#)

6.1 Protein, DNA and RNA chains [i](#)

In the following table, the column labelled ‘#RSRZ> 2’ contains the number (and percentage) of RSRZ outliers, followed by percent RSRZ outliers for the chain as percentile scores relative to all X-ray entries and entries of similar resolution. The OWAB column contains the minimum, median, 95th percentile and maximum values of the occupancy-weighted average B-factor per residue. The column labelled ‘Q< 0.9’ lists the number of (and percentage) of residues with an average occupancy less than 0.9.

Mol	Chain	Analysed	<RSRZ>	#RSRZ>2	OWAB(Å ²)	Q<0.9
1	A	580/609 (95%)	-0.46	2 (0%) 94 92	20, 36, 68, 95	0
1	B	578/609 (94%)	-0.54	1 (0%) 95 94	16, 34, 65, 97	0
1	C	575/609 (94%)	-0.44	3 (0%) 91 88	18, 38, 78, 103	0
2	D	156/169 (92%)	-0.11	2 (1%) 79 71	31, 49, 82, 118	0
2	E	156/169 (92%)	-0.15	2 (1%) 79 71	32, 50, 89, 103	0
2	F	156/169 (92%)	-0.14	3 (1%) 70 59	34, 55, 87, 137	0
All	All	2201/2334 (94%)	-0.40	13 (0%) 90 86	16, 39, 76, 137	0

All (13) RSRZ outliers are listed below:

Mol	Chain	Res	Type	RSRZ
2	E	11	GLY	5.0
2	D	11	GLY	3.1
2	E	12	SER	3.0
2	F	13	ASP	2.8
2	F	163	GLU	2.3
1	A	257	GLY	2.3
1	B	834	GLY	2.3
1	A	865	GLN	2.3
2	F	12	SER	2.2
1	C	660	ASP	2.2
2	D	31	ARG	2.2
1	C	39	ALA	2.1
1	C	833	PRO	2.0

6.2 Non-standard residues in protein, DNA, RNA chains [i](#)

There are no non-standard protein/DNA/RNA residues in this entry.

6.3 Carbohydrates [i](#)

There are no carbohydrates in this entry.

6.4 Ligands [i](#)

In the following table, the Atoms column lists the number of modelled atoms in the group and the number defined in the chemical component dictionary. LLDF column lists the quality of electron density of the group with respect to its neighbouring residues in protein, DNA or RNA chains. The B-factors column lists the minimum, median, 95th percentile and maximum values of B factors of atoms in the group. The column labelled 'Q< 0.9' lists the number of atoms with occupancy less than 0.9.

Mol	Type	Chain	Res	Atoms	RSCC	RSR	LLDF	B-factors(\AA^2)	Q<0.9
3	RHQ	C	901	33/33	0.93	0.26	2.15	50,54,82,87	0

6.5 Other polymers [i](#)

There are no such residues in this entry.