



Full wwPDB X-ray Structure Validation Report ⓘ

Feb 1, 2016 – 04:23 PM GMT

PDB ID : 4EON
Title : Thr 160 phosphorylated CDK2 H84S, Q85M, Q131E - human cyclin A3 complex with the inhibitor RO3306
Authors : Echalier, A.; Cot, E.; Camasses, A.; Hodimont, E.; Hoh, F.; Sheinerman, F.; Krasinska, L.; Fisher, D.
Deposited on : 2012-04-14
Resolution : 2.40 Å(reported)

This is a Full wwPDB X-ray Structure Validation Report for a publicly released PDB entry.
We welcome your comments at validation@mail.wwpdb.org
A user guide is available at
<http://wwpdb.org/validation/2016/XrayValidationReportHelp>
with specific help available everywhere you see the ⓘ symbol.

The following versions of software and data (see [references ⓘ](#)) were used in the production of this report:

MolProbity : 4.02b-467
Mogul : 1.7 (RC4), CSD as536be (2015)
Xtriage (Phenix) : 1.9-1692
EDS : rb-20026688
Percentile statistics : 20151230.v01 (using entries in the PDB archive December 30th 2015)
Refmac : 5.8.0135
CCP4 : 6.5.0
Ideal geometry (proteins) : Engh & Huber (2001)
Ideal geometry (DNA, RNA) : Parkinson et al. (1996)
Validation Pipeline (wwPDB-VP) : trunk26865

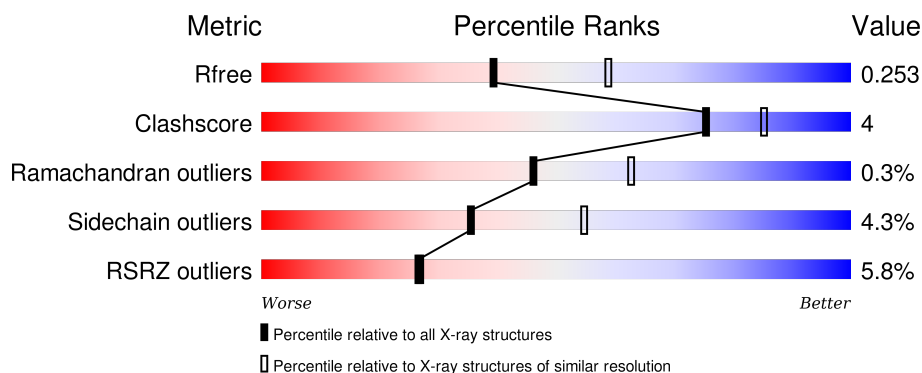
1 Overall quality at a glance

The following experimental techniques were used to determine the structure:

X-RAY DIFFRACTION

The reported resolution of this entry is 2.40 Å.

Percentile scores (ranging between 0-100) for global validation metrics of the entry are shown in the following graphic. The table shows the number of entries on which the scores are based.



Metric	Whole archive (#Entries)	Similar resolution (#Entries, resolution range(Å))
R_{free}	91344	2919 (2.40-2.40)
Clashscore	102246	3407 (2.40-2.40)
Ramachandran outliers	100387	3351 (2.40-2.40)
Sidechain outliers	100360	3352 (2.40-2.40)
RSRZ outliers	91569	2928 (2.40-2.40)

The table below summarises the geometric issues observed across the polymeric chains and their fit to the electron density. The red, orange, yellow and green segments on the lower bar indicate the fraction of residues that contain outliers for ≥ 3 , 2, 1 and 0 types of geometric quality criteria. A grey segment represents the fraction of residues that are not modelled. The numeric value for each fraction is indicated below the corresponding segment, with a dot representing fractions $\leq 5\%$. The upper red bar (where present) indicates the fraction of residues that have poor fit to the electron density. The numeric value is given above the bar.

Mol	Chain	Length	Quality of chain
1	A	300	<div> <div>5%</div> <div>90%</div> <div>10%</div> </div>
1	C	300	<div> <div>5%</div> <div>84%</div> <div>14%</div> <div>•</div> </div>
2	B	258	<div> <div>10%</div> <div>89%</div> <div>9%</div> <div>•</div> </div>
2	D	258	<div> <div>3%</div> <div>93%</div> <div>5%</div> <div>•</div> </div>

The following table lists non-polymeric compounds, carbohydrate monomers and non-standard

residues in protein, DNA, RNA chains that are outliers for geometric or electron-density-fit criteria:

Mol	Type	Chain	Res	Chirality	Geometry	Clashes	Electron density
3	1RO	A	301	-	-	X	-

2 Entry composition

There are 5 unique types of molecules in this entry. The entry contains 9199 atoms, of which 0 are hydrogens and 0 are deuteriums.

In the tables below, the ZeroOcc column contains the number of atoms modelled with zero occupancy, the AltConf column contains the number of residues with at least one atom in alternate conformation and the Trace column contains the number of residues modelled with at most 2 atoms.

- Molecule 1 is a protein called Cyclin-dependent kinase 2.

Mol	Chain	Residues	Atoms						ZeroOcc	AltConf	Trace
1	A	300	Total	C	N	O	P	S	0	1	0
			2415	1566	407	432	1	9			
1	C	299	Total	C	N	O	P	S	0	3	0
			2426	1570	411	435	1	9			

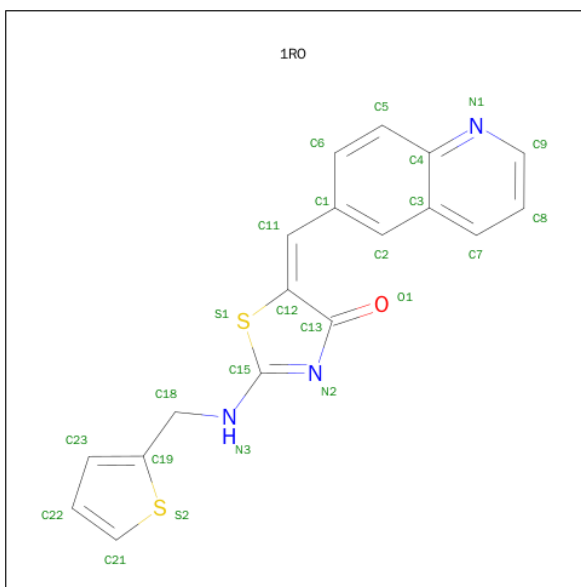
There are 10 discrepancies between the modelled and reference sequences:

Chain	Residue	Modelled	Actual	Comment	Reference
A	-1	GLY	-	EXPRESSION TAG	UNP P24941
A	0	SER	-	EXPRESSION TAG	UNP P24941
A	84	SER	HIS	ENGINEERED MUTATION	UNP P24941
A	85	MET	GLN	ENGINEERED MUTATION	UNP P24941
A	131	GLU	GLN	ENGINEERED MUTATION	UNP P24941
C	-1	GLY	-	EXPRESSION TAG	UNP P24941
C	0	SER	-	EXPRESSION TAG	UNP P24941
C	84	SER	HIS	ENGINEERED MUTATION	UNP P24941
C	85	MET	GLN	ENGINEERED MUTATION	UNP P24941
C	131	GLU	GLN	ENGINEERED MUTATION	UNP P24941

- Molecule 2 is a protein called Cyclin-A2.

Mol	Chain	Residues	Atoms					ZeroOcc	AltConf	Trace
2	B	257	Total	C	N	O	S	0	1	0
			2084	1349	339	385	11			
2	D	257	Total	C	N	O	S	0	2	0
			2094	1355	342	386	11			

- Molecule 3 is (5E)-5-(QUINOLIN-6-YLMETHYLIDENE)-2-[(THIOPHEN-2-YLMETHYL) AMINO]-1,3-THIAZOL-4(5H)-ONE (three-letter code: 1RO) (formula: C₁₈H₁₃N₃OS₂).



Mol	Chain	Residues	Atoms					ZeroOcc	AltConf
3	A	1	Total	C	N	O	S	0	0
			24	18	3	1	2		
3	C	1	Total	C	N	O	S	0	0
			24	18	3	1	2		

- Molecule 4 is MAGNESIUM ION (three-letter code: MG) (formula: Mg).

Mol	Chain	Residues	Atoms		ZeroOcc	AltConf
4	B	1	Total	Mg	0	0
			1	1		
4	D	1	Total	Mg	0	0
			1	1		

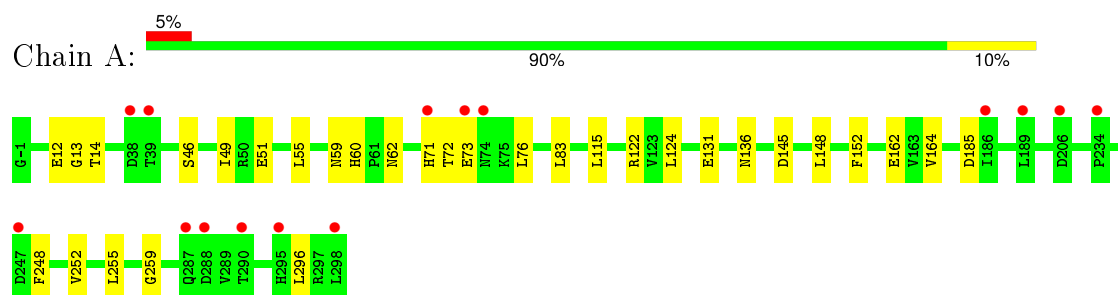
- Molecule 5 is water.

Mol	Chain	Residues	Atoms		ZeroOcc	AltConf
5	A	25	Total	O	0	0
			25	25		
5	B	23	Total	O	0	0
			23	23		
5	C	61	Total	O	0	0
			61	61		
5	D	21	Total	O	0	0
			21	21		

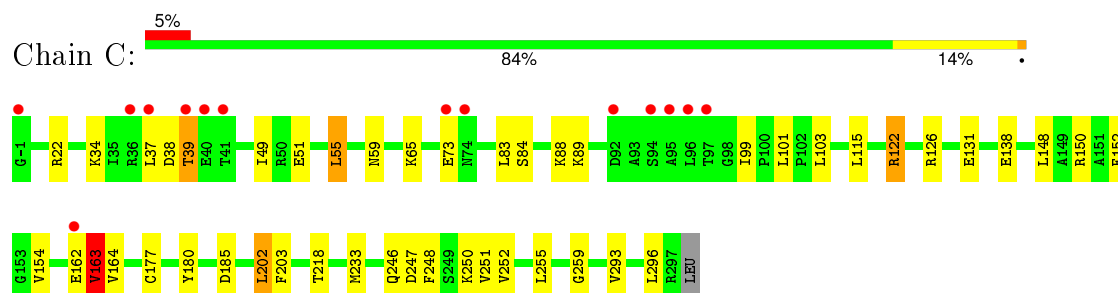
3 Residue-property plots [i](#)

These plots are drawn for all protein, RNA and DNA chains in the entry. The first graphic for a chain summarises the proportions of errors displayed in the second graphic. The second graphic shows the sequence view annotated by issues in geometry and electron density. Residues are color-coded according to the number of geometric quality criteria for which they contain at least one outlier: green = 0, yellow = 1, orange = 2 and red = 3 or more. A red dot above a residue indicates a poor fit to the electron density ($RSRZ > 2$). Stretches of 2 or more consecutive residues without any outlier are shown as a green connector. Residues present in the sample, but not in the model, are shown in grey.

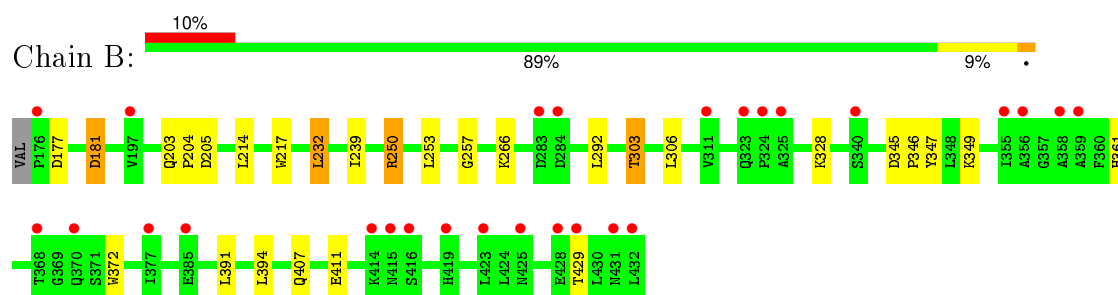
• Molecule 1: Cyclin-dependent kinase 2



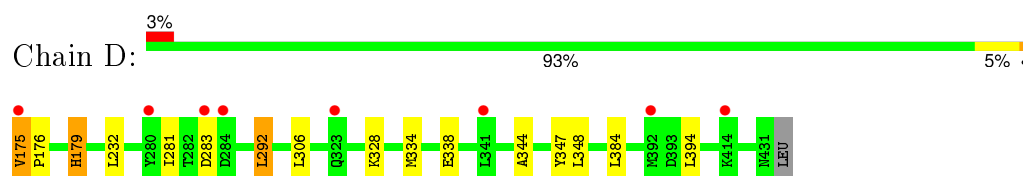
• Molecule 1: Cyclin-dependent kinase 2



• Molecule 2: Cyclin-A2



• Molecule 2: Cyclin-A2



4 Data and refinement statistics

Property	Value	Source
Space group	P 21 21 21	Depositor
Cell constants a, b, c, α , β , γ	73.63Å 132.98Å 176.73Å 90.00° 90.00° 90.00°	Depositor
Resolution (Å)	29.86 – 2.40 29.86 – 2.40	Depositor EDS
% Data completeness (in resolution range)	98.8 (29.86-2.40) 98.9 (29.86-2.40)	Depositor EDS
R_{merge}	(Not available)	Depositor
R_{sym}	(Not available)	Depositor
$\langle I/\sigma(I) \rangle$ ¹	1.89 (at 2.39Å)	Xtriage
Refinement program	REFMAC 5.6.0117	Depositor
R, R_{free}	0.219 , 0.254 0.217 , 0.253	Depositor DCC
R_{free} test set	3472 reflections (5.39%)	DCC
Wilson B-factor (Å ²)	43.0	Xtriage
Anisotropy	0.080	Xtriage
Bulk solvent k_{sol} (e/Å ³), B_{sol} (Å ²)	0.34 , 33.0	EDS
Estimated twinning fraction	No twinning to report.	Xtriage
L-test for twinning ²	$\langle L \rangle = 0.47$, $\langle L^2 \rangle = 0.30$	Xtriage
Outliers	0 of 67866 reflections	Xtriage
F_o, F_c correlation	0.94	EDS
Total number of atoms	9199	wwPDB-VP
Average B, all atoms (Å ²)	46.0	wwPDB-VP

Xtriage's analysis on translational NCS is as follows: *The largest off-origin peak in the Patterson function is 3.24% of the height of the origin peak. No significant pseudotranslation is detected.*

¹Intensities estimated from amplitudes.

²Theoretical values of $\langle |L| \rangle$, $\langle L^2 \rangle$ for acentric reflections are 0.5, 0.375 respectively for untwinned datasets, and 0.333, 0.2 for perfectly twinned datasets.

5 Model quality

5.1 Standard geometry

Bond lengths and bond angles in the following residue types are not validated in this section: TPO, MG, 1RO

The Z score for a bond length (or angle) is the number of standard deviations the observed value is removed from the expected value. A bond length (or angle) with $|Z| > 5$ is considered an outlier worth inspection. RMSZ is the root-mean-square of all Z scores of the bond lengths (or angles).

Mol	Chain	Bond lengths		Bond angles	
		RMSZ	$\# Z > 5$	RMSZ	$\# Z > 5$
1	A	0.46	0/2464	0.55	0/3341
1	C	0.48	0/2475	0.60	1/3355 (0.0%)
2	B	0.44	2/2134 (0.1%)	0.53	1/2897 (0.0%)
2	D	0.44	0/2145	0.53	0/2913
All	All	0.45	2/9218 (0.0%)	0.55	2/12506 (0.0%)

Chiral center outliers are detected by calculating the chiral volume of a chiral center and verifying if the center is modelled as a planar moiety or with the opposite hand. A planarity outlier is detected by checking planarity of atoms in a peptide group, atoms in a mainchain group or atoms of a sidechain that are expected to be planar.

Mol	Chain	#Chirality outliers	#Planarity outliers
1	C	0	1

All (2) bond length outliers are listed below:

Mol	Chain	Res	Type	Atoms	Z	Observed(Å)	Ideal(Å)
2	B	372	TRP	CD2-CE2	5.04	1.47	1.41
2	B	217	TRP	CD2-CE2	5.02	1.47	1.41

All (2) bond angle outliers are listed below:

Mol	Chain	Res	Type	Atoms	Z	Observed($^{\circ}$)	Ideal($^{\circ}$)
1	C	163	VAL	N-CA-C	8.44	133.78	111.00
2	B	232	LEU	CA-CB-CG	5.12	127.09	115.30

There are no chirality outliers.

All (1) planarity outliers are listed below:

Mol	Chain	Res	Type	Group
1	C	162	GLU	Peptide

5.2 Too-close contacts

In the following table, the Non-H and H(model) columns list the number of non-hydrogen atoms and hydrogen atoms in the chain respectively. The H(added) column lists the number of hydrogen atoms added and optimized by MolProbity. The Clashes column lists the number of clashes within the asymmetric unit, whereas Symm-Clashes lists symmetry related clashes.

Mol	Chain	Non-H	H(model)	H(added)	Clashes	Symm-Clashes
1	A	2415	0	2459	16	0
1	C	2426	0	2463	25	0
2	B	2084	0	2102	15	0
2	D	2094	0	2108	10	0
3	A	24	0	13	9	0
3	C	24	0	13	5	0
4	B	1	0	0	0	0
4	D	1	0	0	0	0
5	A	25	0	0	0	0
5	B	23	0	0	0	0
5	C	61	0	0	0	0
5	D	21	0	0	0	0
All	All	9199	0	9158	71	0

The all-atom clashscore is defined as the number of clashes found per 1000 atoms (including hydrogen atoms). The all-atom clashscore for this structure is 4.

All (71) close contacts within the same asymmetric unit are listed below, sorted by their clash magnitude.

Atom-1	Atom-2	Interatomic distance (Å)	Clash overlap (Å)
3:A:301:1RO:C19	3:A:301:1RO:N2	2.30	0.94
1:C:37:LEU:HA	1:C:38:ASP:HB2	1.48	0.93
3:C:301:1RO:H13	3:C:301:1RO:O1	1.76	0.84
3:A:301:1RO:O1	3:A:301:1RO:C2	2.29	0.81
3:C:301:1RO:C2	3:C:301:1RO:O1	2.29	0.81
3:A:301:1RO:O1	3:A:301:1RO:H13	1.83	0.78
1:C:88:LYS:HD3	1:C:131[A]:GLU:HG3	1.68	0.74
3:C:301:1RO:C19	3:C:301:1RO:N2	2.36	0.74
1:C:163:VAL:O	1:C:163:VAL:HG13	1.90	0.72
1:C:83:LEU:O	3:C:301:1RO:H10	1.91	0.70
3:A:301:1RO:N2	3:A:301:1RO:C23	2.56	0.69

Continued on next page...

Continued from previous page...

Atom-1	Atom-2	Interatomic distance (Å)	Clash overlap (Å)
1:C:163:VAL:O	1:C:164:VAL:CG2	2.43	0.66
1:C:163:VAL:HG21	1:C:180:TYR:OH	1.97	0.65
2:D:175:VAL:N	2:D:176:PRO:CD	2.60	0.64
1:C:163:VAL:O	1:C:164:VAL:HG23	1.98	0.64
2:B:181:ASP:N	2:B:181:ASP:OD1	2.34	0.61
1:A:71:HIS:HD2	1:A:76:LEU:HD13	1.67	0.59
1:C:177:CYS:HB2	1:C:233:MET:CE	2.34	0.58
1:A:115:LEU:HD21	1:A:185:ASP:HB3	1.86	0.58
1:C:154:VAL:HG11	2:D:179[A]:HIS:HB2	1.87	0.57
2:D:175:VAL:N	2:D:176:PRO:HD3	2.19	0.56
1:A:49:ILE:HG23	2:B:306:LEU:HD12	1.88	0.56
1:C:163:VAL:CG1	1:C:163:VAL:O	2.56	0.54
1:C:51:GLU:O	1:C:55:LEU:HB2	2.08	0.53
1:A:60:HIS:CD2	1:A:62:ASN:H	2.27	0.53
3:A:301:1RO:C13	3:A:301:1RO:H13	2.39	0.52
2:B:177[B]:ASP:O	2:B:177[B]:ASP:OD2	2.28	0.51
1:C:131[A]:GLU:OE2	1:C:131[A]:GLU:N	2.29	0.50
1:C:202:LEU:HD13	1:C:203:PHE:CE2	2.46	0.50
1:A:131[A]:GLU:O	3:A:301:1RO:H4	2.11	0.50
1:C:99:ILE:HG23	1:C:103:LEU:HD23	1.93	0.50
1:A:13:GLY:HA2	3:A:301:1RO:H2	1.94	0.50
3:A:301:1RO:C13	3:A:301:1RO:C2	2.91	0.49
1:C:131[A]:GLU:H	1:C:131[A]:GLU:CD	2.15	0.49
2:B:407:GLN:O	2:B:411:GLU:HG2	2.12	0.49
1:A:131[B]:GLU:O	3:A:301:1RO:H4	2.13	0.48
1:A:60:HIS:HD2	1:A:62:ASN:H	1.61	0.48
1:A:252:VAL:HG11	1:A:255:LEU:HD22	1.95	0.48
2:B:214:LEU:HD22	2:B:253:LEU:HG	1.96	0.48
2:D:179[A]:HIS:CD2	2:D:179[A]:HIS:C	2.88	0.47
1:A:46:SER:HB2	2:B:266:LYS:O	2.14	0.47
1:A:14:THR:HG23	1:A:145:ASP:OD2	2.15	0.47
1:C:255:LEU:HG	1:C:259:GLY:HA3	1.98	0.46
1:C:122:ARG:HA	1:C:152:PHE:CE1	2.50	0.46
2:D:344:ALA:O	2:D:348:LEU:HB2	2.15	0.46
1:A:51:GLU:O	1:A:55:LEU:HB2	2.16	0.46
2:B:361:HIS:CD2	2:B:391:LEU:HD21	2.51	0.46
1:C:115:LEU:HD21	1:C:185:ASP:HB3	1.99	0.45
1:A:124:LEU:HG	1:A:152:PHE:CD1	2.50	0.45
3:C:301:1RO:C13	3:C:301:1RO:H13	2.46	0.45
2:D:334:MET:O	2:D:338:GLU:HB2	2.16	0.45
1:C:49:ILE:HG23	2:D:306:LEU:HD12	1.99	0.45

Continued on next page...

Continued from previous page...

Atom-1	Atom-2	Interatomic distance (Å)	Clash overlap (Å)
1:C:251:VAL:HG12	1:C:252:VAL:HG23	1.98	0.45
1:C:177:CYS:HB2	1:C:233:MET:HE1	1.98	0.44
1:C:126:ARG:HD2	1:C:163:VAL:HG22	1.99	0.44
2:B:205:ASP:OD2	2:B:250:ARG:HD2	2.18	0.44
1:C:247:ASP:HB3	1:C:250:LYS:HG2	2.01	0.43
1:C:39:THR:O	2:D:292:LEU:HD23	2.19	0.43
1:A:255:LEU:HG	1:A:259:GLY:HA3	2.00	0.43
1:A:83:LEU:HD23	1:A:136:ASN:HB3	2.01	0.43
2:B:203:GLN:HA	2:B:204:PRO:HD3	1.82	0.42
1:A:72:THR:HG22	1:A:73:GLU:H	1.84	0.42
2:B:239:ILE:HD11	2:B:257:GLY:HA2	2.00	0.42
2:B:346:PRO:HB2	2:B:349:LYS:HE2	2.01	0.42
2:D:344:ALA:HB1	2:D:348:LEU:HD22	2.01	0.42
2:B:345:ASP:HA	2:B:346:PRO:HA	1.86	0.41
1:C:163:VAL:HG21	1:C:180:TYR:HH	1.84	0.41
2:B:303:THR:O	2:B:303:THR:HG23	2.20	0.41
2:B:361:HIS:HD2	2:B:391:LEU:HD21	1.84	0.41
2:B:347:TYR:OH	2:B:394:LEU:HA	2.20	0.41
2:D:347:TYR:OH	2:D:394:LEU:HA	2.21	0.40

There are no symmetry-related clashes.

5.3 Torsion angles [i](#)

5.3.1 Protein backbone [i](#)

In the following table, the Percentiles column shows the percent Ramachandran outliers of the chain as a percentile score with respect to all X-ray entries followed by that with respect to entries of similar resolution.

The Analysed column shows the number of residues for which the backbone conformation was analysed, and the total number of residues.

Mol	Chain	Analysed	Favoured	Allowed	Outliers	Percentiles	
1	A	298/300 (99%)	284 (95%)	13 (4%)	1 (0%)	46	63
1	C	299/300 (100%)	284 (95%)	13 (4%)	2 (1%)	26	38
2	B	256/258 (99%)	250 (98%)	6 (2%)	0	100	100
2	D	257/258 (100%)	251 (98%)	6 (2%)	0	100	100
All	All	1110/1116 (100%)	1069 (96%)	38 (3%)	3 (0%)	46	63

All (3) Ramachandran outliers are listed below:

Mol	Chain	Res	Type
1	C	163	VAL
1	A	164	VAL
1	C	73	GLU

5.3.2 Protein sidechains ⓘ

In the following table, the Percentiles column shows the percent sidechain outliers of the chain as a percentile score with respect to all X-ray entries followed by that with respect to entries of similar resolution.

The Analysed column shows the number of residues for which the sidechain conformation was analysed, and the total number of residues.

Mol	Chain	Analysed	Rotameric	Outliers	Percentiles	
1	A	264/263 (100%)	257 (97%)	7 (3%)	52	73
1	C	265/263 (101%)	245 (92%)	20 (8%)	17	26
2	B	232/232 (100%)	225 (97%)	7 (3%)	48	70
2	D	233/232 (100%)	224 (96%)	9 (4%)	39	59
All	All	994/990 (100%)	951 (96%)	43 (4%)	35	55

All (43) residues with a non-rotameric sidechain are listed below:

Mol	Chain	Res	Type
1	A	12	GLU
1	A	59	ASN
1	A	122	ARG
1	A	148	LEU
1	A	162	GLU
1	A	248	PHE
1	A	296	LEU
2	B	181	ASP
2	B	232	LEU
2	B	250	ARG
2	B	292	LEU
2	B	303	THR
2	B	328	LYS
2	B	429	THR
1	C	22	ARG
1	C	34	LYS
1	C	39	THR

Continued on next page...

Continued from previous page...

Mol	Chain	Res	Type
1	C	55	LEU
1	C	59	ASN
1	C	65	LYS
1	C	84	SER
1	C	89	LYS
1	C	101	LEU
1	C	122	ARG
1	C	138	GLU
1	C	148	LEU
1	C	150	ARG
1	C	163	VAL
1	C	202	LEU
1	C	218	THR
1	C	246	GLN
1	C	248	PHE
1	C	293	VAL
1	C	296	LEU
2	D	175	VAL
2	D	179[A]	HIS
2	D	179[B]	HIS
2	D	232	LEU
2	D	281	ILE
2	D	283	ASP
2	D	292	LEU
2	D	328	LYS
2	D	384	LEU

Some sidechains can be flipped to improve hydrogen bonding and reduce clashes. All (13) such sidechains are listed below:

Mol	Chain	Res	Type
1	A	59	ASN
1	A	60	HIS
1	A	62	ASN
1	A	113	GLN
1	A	268	HIS
2	B	179	HIS
2	B	183	HIS
2	B	254	GLN
1	C	59	ASN
1	C	74	ASN
1	C	246	GLN
2	D	254	GLN

Continued on next page...

Continued from previous page...

Mol	Chain	Res	Type
2	D	395	HIS

5.3.3 RNA ⓘ

There are no RNA molecules in this entry.

5.4 Non-standard residues in protein, DNA, RNA chains ⓘ

2 non-standard protein/DNA/RNA residues are modelled in this entry.

In the following table, the Counts columns list the number of bonds (or angles) for which Mogul statistics could be retrieved, the number of bonds (or angles) that are observed in the model and the number of bonds (or angles) that are defined in the chemical component dictionary. The Link column lists molecule types, if any, to which the group is linked. The Z score for a bond length (or angle) is the number of standard deviations the observed value is removed from the expected value. A bond length (or angle) with $|Z| > 2$ is considered an outlier worth inspection. RMSZ is the root-mean-square of all Z scores of the bond lengths (or angles).

Mol	Type	Chain	Res	Link	Bond lengths			Bond angles		
					Counts	RMSZ	$\# Z > 2$	Counts	RMSZ	$\# Z > 2$
1	TPO	A	160	1	8,10,11	0.65	0	7,14,16	1.32	0
1	TPO	C	160	1	8,10,11	0.71	0	7,14,16	1.32	1 (14%)

In the following table, the Chirals column lists the number of chiral outliers, the number of chiral centers analysed, the number of these observed in the model and the number defined in the chemical component dictionary. Similar counts are reported in the Torsion and Rings columns. '-' means no outliers of that kind were identified.

Mol	Type	Chain	Res	Link	Chirals	Torsions	Rings
1	TPO	A	160	1	-	0/8/11/13	0/0/0/0
1	TPO	C	160	1	-	0/8/11/13	0/0/0/0

There are no bond length outliers.

All (1) bond angle outliers are listed below:

Mol	Chain	Res	Type	Atoms	Z	Observed(°)	Ideal(°)
1	C	160	TPO	O3P-P-O2P	2.36	116.38	107.38

There are no chirality outliers.

There are no torsion outliers.

There are no ring outliers.

No monomer is involved in short contacts.

5.5 Carbohydrates [i](#)

There are no carbohydrates in this entry.

5.6 Ligand geometry [i](#)

Of 4 ligands modelled in this entry, 2 are monoatomic - leaving 2 for Mogul analysis.

In the following table, the Counts columns list the number of bonds (or angles) for which Mogul statistics could be retrieved, the number of bonds (or angles) that are observed in the model and the number of bonds (or angles) that are defined in the chemical component dictionary. The Link column lists molecule types, if any, to which the group is linked. The Z score for a bond length (or angle) is the number of standard deviations the observed value is removed from the expected value. A bond length (or angle) with $|Z| > 2$ is considered an outlier worth inspection. RMSZ is the root-mean-square of all Z scores of the bond lengths (or angles).

Mol	Type	Chain	Res	Link	Bond lengths			Bond angles		
					Counts	RMSZ	# Z > 2	Counts	RMSZ	# Z > 2
3	1RO	A	301	-	25,27,27	2.55	8 (32%)	26,37,37	3.00	8 (30%)
3	1RO	C	301	-	25,27,27	2.69	8 (32%)	26,37,37	2.66	5 (19%)

In the following table, the Chirals column lists the number of chiral outliers, the number of chiral centers analysed, the number of these observed in the model and the number defined in the chemical component dictionary. Similar counts are reported in the Torsion and Rings columns. '-' means no outliers of that kind were identified.

Mol	Type	Chain	Res	Link	Chirals	Torsions	Rings
3	1RO	A	301	-	-	0/5/21/21	0/4/4/4
3	1RO	C	301	-	-	0/5/21/21	0/4/4/4

All (16) bond length outliers are listed below:

Mol	Chain	Res	Type	Atoms	Z	Observed(Å)	Ideal(Å)
3	C	301	1RO	C13-N2	-4.59	1.28	1.37
3	A	301	1RO	C13-N2	-4.52	1.28	1.37
3	C	301	1RO	C5-C4	-3.47	1.35	1.41
3	A	301	1RO	C5-C4	-2.98	1.36	1.41
3	C	301	1RO	C2-C3	-2.84	1.35	1.42
3	A	301	1RO	C4-N1	-2.59	1.32	1.37
3	C	301	1RO	C4-N1	-2.47	1.32	1.37

Continued on next page...

Continued from previous page...

Mol	Chain	Res	Type	Atoms	Z	Observed(Å)	Ideal(Å)
3	A	301	1RO	C2-C3	-2.21	1.37	1.42
3	C	301	1RO	C7-C3	-2.13	1.36	1.41
3	C	301	1RO	C6-C1	-2.05	1.35	1.39
3	A	301	1RO	C12-S1	-2.02	1.69	1.73
3	A	301	1RO	C7-C3	-2.01	1.37	1.41
3	C	301	1RO	C3-C4	2.57	1.45	1.42
3	A	301	1RO	C3-C4	2.78	1.46	1.42
3	A	301	1RO	C11-C12	9.89	1.47	1.34
3	C	301	1RO	C11-C12	10.00	1.47	1.34

All (13) bond angle outliers are listed below:

Mol	Chain	Res	Type	Atoms	Z	Observed(°)	Ideal(°)
3	A	301	1RO	C1-C11-C12	-10.08	117.05	130.96
3	A	301	1RO	C22-C21-S2	-8.31	104.03	113.23
3	C	301	1RO	C1-C11-C12	-7.90	120.06	130.96
3	C	301	1RO	C18-N3-C15	-6.47	112.30	122.81
3	C	301	1RO	C22-C21-S2	-5.94	106.65	113.23
3	A	301	1RO	O1-C13-N2	-3.91	114.77	124.40
3	C	301	1RO	O1-C13-N2	-3.78	115.09	124.40
3	A	301	1RO	C18-N3-C15	-2.48	118.78	122.81
3	A	301	1RO	C11-C12-S1	-2.29	126.77	129.31
3	A	301	1RO	C19-C18-N3	2.05	117.04	112.66
3	A	301	1RO	C5-C4-N1	2.06	121.94	118.52
3	C	301	1RO	C18-C19-C23	2.32	133.47	128.63
3	A	301	1RO	C18-C19-C23	2.85	134.58	128.63

There are no chirality outliers.

There are no torsion outliers.

There are no ring outliers.

2 monomers are involved in 14 short contacts:

Mol	Chain	Res	Type	Clashes	Symm-Clashes
3	A	301	1RO	9	0
3	C	301	1RO	5	0

5.7 Other polymers ⓘ

There are no such residues in this entry.

5.8 Polymer linkage issues

There are no chain breaks in this entry.

6 Fit of model and data ⓘ

6.1 Protein, DNA and RNA chains ⓘ

In the following table, the column labelled ‘#RSRZ> 2’ contains the number (and percentage) of RSRZ outliers, followed by percent RSRZ outliers for the chain as percentile scores relative to all X-ray entries and entries of similar resolution. The OWAB column contains the minimum, median, 95th percentile and maximum values of the occupancy-weighted average B-factor per residue. The column labelled ‘Q< 0.9’ lists the number of (and percentage) of residues with an average occupancy less than 0.9.

Mol	Chain	Analysed	<RSRZ>	#RSRZ>2	OWAB(Å ²)	Q<0.9
1	A	299/300 (99%)	0.15	15 (5%) 32 33	31, 47, 76, 106	2 (0%)
1	C	298/300 (99%)	0.00	14 (4%) 35 36	22, 34, 64, 103	5 (1%)
2	B	257/258 (99%)	0.40	27 (10%) 8 8	30, 50, 79, 109	3 (1%)
2	D	257/258 (99%)	0.11	8 (3%) 52 52	26, 44, 65, 84	0
All	All	1111/1116 (99%)	0.16	64 (5%) 26 27	22, 44, 75, 109	10 (0%)

All (64) RSRZ outliers are listed below:

Mol	Chain	Res	Type	RSRZ
1	C	39	THR	8.9
1	C	40	GLU	7.6
1	C	95	ALA	7.6
1	C	96	LEU	5.8
1	A	39	THR	5.6
2	B	432	LEU	4.7
2	B	428	GLU	4.5
2	B	323	GLN	4.3
2	B	311	VAL	4.2
1	C	41	THR	4.2
2	D	175	VAL	4.0
2	D	284	ASP	3.9
2	B	415	ASN	3.8
1	A	73	GLU	3.7
2	B	414	LYS	3.7
2	B	284	ASP	3.5
1	C	94	SER	3.3
2	B	176	PRO	3.2
2	B	431	ASN	3.2
1	A	288	ASP	3.2
2	B	324	PRO	3.0

Continued on next page...

Continued from previous page...

Mol	Chain	Res	Type	RSRZ
2	B	385	GLU	3.0
2	B	355	ILE	2.8
2	B	419	HIS	2.8
2	D	283	ASP	2.8
1	A	71	HIS	2.8
1	A	206	ASP	2.7
1	A	287	GLN	2.7
2	D	323	GLN	2.7
2	B	416	SER	2.7
2	B	359	ALA	2.7
1	A	295	HIS	2.7
2	B	368	THR	2.7
2	B	356	ALA	2.7
2	B	340	SER	2.6
1	C	73	GLU	2.6
2	D	341	LEU	2.6
1	C	97	THR	2.6
1	A	247	ASP	2.5
2	B	325	ALA	2.5
2	B	423	LEU	2.5
1	A	298	LEU	2.4
2	B	377	ILE	2.4
1	A	74	ASN	2.4
2	B	370	GLN	2.4
1	C	-1	GLY	2.4
1	A	234	PRO	2.3
1	C	37	LEU	2.3
1	C	36	ARG	2.3
2	B	429	THR	2.3
2	D	280	TYR	2.2
1	A	290	THR	2.2
1	C	162	GLU	2.2
1	C	92	ASP	2.2
2	B	197	VAL	2.2
2	B	283	ASP	2.2
1	C	74	ASN	2.2
2	B	425	ASN	2.1
1	A	186	ILE	2.1
2	D	414	LYS	2.1
1	A	189	LEU	2.1
2	D	392	MET	2.1
1	A	38	ASP	2.1

Continued on next page...

Continued from previous page...

Mol	Chain	Res	Type	RSRZ
2	B	358	ALA	2.0

6.2 Non-standard residues in protein, DNA, RNA chains [i](#)

In the following table, the Atoms column lists the number of modelled atoms in the group and the number defined in the chemical component dictionary. LLDF column lists the quality of electron density of the group with respect to its neighbouring residues in protein, DNA or RNA chains. The B-factors column lists the minimum, median, 95th percentile and maximum values of B factors of atoms in the group. The column labelled 'Q< 0.9' lists the number of atoms with occupancy less than 0.9.

Mol	Type	Chain	Res	Atoms	RSCC	RSR	LLDF	B-factors(Å ²)	Q<0.9
1	TPO	C	160	11/12	0.99	0.10	-	28,30,34,35	0
1	TPO	A	160	11/12	0.98	0.11	-	34,37,43,43	0

6.3 Carbohydrates [i](#)

There are no carbohydrates in this entry.

6.4 Ligands [i](#)

In the following table, the Atoms column lists the number of modelled atoms in the group and the number defined in the chemical component dictionary. LLDF column lists the quality of electron density of the group with respect to its neighbouring residues in protein, DNA or RNA chains. The B-factors column lists the minimum, median, 95th percentile and maximum values of B factors of atoms in the group. The column labelled 'Q< 0.9' lists the number of atoms with occupancy less than 0.9.

Mol	Type	Chain	Res	Atoms	RSCC	RSR	LLDF	B-factors(Å ²)	Q<0.9
3	1RO	C	301	24/24	0.89	0.16	0.33	30,37,43,43	0
4	MG	B	501	1/1	0.92	0.20	0.02	38,38,38,38	0
3	1RO	A	301	24/24	0.93	0.13	-0.63	47,52,54,56	0
4	MG	D	501	1/1	0.98	0.06	-1.29	41,41,41,41	0

6.5 Other polymers [i](#)

There are no such residues in this entry.