



# Full wwPDB X-ray Structure Validation Report ⓘ

Jan 31, 2016 – 07:14 PM GMT

PDB ID : 1EP4  
Title : Crystal structure of HIV-1 reverse transcriptase in complex with S-1153  
Authors : Ren, J.; Nichols, C.; Bird, L.E.; Fujiwara, T.; Sugimoto, H.; Stuart, D.I.; Stammers, D.K.  
Deposited on : 2000-03-27  
Resolution : 2.50 Å(reported)

This is a Full wwPDB X-ray Structure Validation Report for a publicly released PDB entry.  
We welcome your comments at [validation@mail.wwpdb.org](mailto:validation@mail.wwpdb.org)  
A user guide is available at  
<http://wwpdb.org/validation/2016/XrayValidationReportHelp>  
with specific help available everywhere you see the ⓘ symbol.

---

The following versions of software and data (see [references ⓘ](#)) were used in the production of this report:

MolProbity : 4.02b-467  
Mogul : 1.7 (RC4), CSD as536be (2015)  
Xtriage (Phenix) : 1.9-1692  
EDS : rb-20026688  
Percentile statistics : 20151230.v01 (using entries in the PDB archive December 30th 2015)  
Refmac : 5.8.0135  
CCP4 : 6.5.0  
Ideal geometry (proteins) : Engh & Huber (2001)  
Ideal geometry (DNA, RNA) : Parkinson et al. (1996)  
Validation Pipeline (wwPDB-VP) : trunk26865

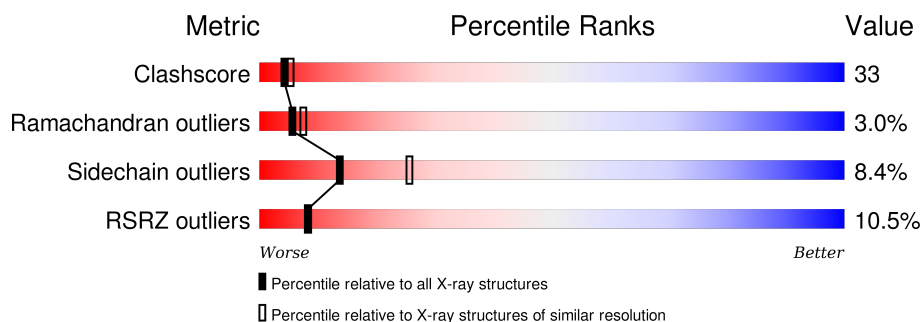
# 1 Overall quality at a glance

The following experimental techniques were used to determine the structure:

*X-RAY DIFFRACTION*

The reported resolution of this entry is 2.50 Å.

Percentile scores (ranging between 0-100) for global validation metrics of the entry are shown in the following graphic. The table shows the number of entries on which the scores are based.



Metric	Whole archive (#Entries)	Similar resolution (#Entries, resolution range(Å))
Clashscore	102246	4242 (2.50-2.50)
Ramachandran outliers	100387	4156 (2.50-2.50)
Sidechain outliers	100360	4158 (2.50-2.50)
RSRZ outliers	91569	3562 (2.50-2.50)

The table below summarises the geometric issues observed across the polymeric chains and their fit to the electron density. The red, orange, yellow and green segments on the lower bar indicate the fraction of residues that contain outliers for  $\geq 3$ , 2, 1 and 0 types of geometric quality criteria. A grey segment represents the fraction of residues that are not modelled. The numeric value for each fraction is indicated below the corresponding segment, with a dot representing fractions  $\leq 5\%$ . The upper red bar (where present) indicates the fraction of residues that have poor fit to the electron density. The numeric value is given above the bar.

Mol	Chain	Length	Quality of chain
1	A	560	
2	B	440	

## 2 Entry composition [i](#)

There are 4 unique types of molecules in this entry. The entry contains 7791 atoms, of which 0 are hydrogens and 0 are deuteriums.

In the tables below, the ZeroOcc column contains the number of atoms modelled with zero occupancy, the AltConf column contains the number of residues with at least one atom in alternate conformation and the Trace column contains the number of residues modelled with at most 2 atoms.

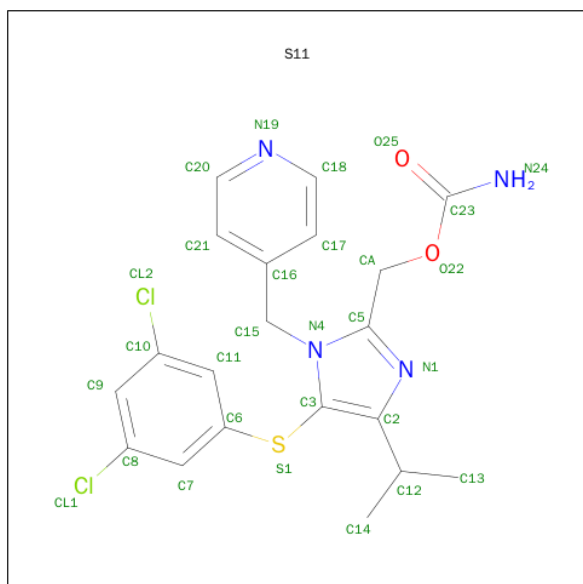
- Molecule 1 is a protein called HIV-1 REVERSE TRANSCRIPTASE.

Mol	Chain	Residues	Atoms					ZeroOcc	AltConf	Trace
1	A	523	Total	C	N	O	S	0	0	0
			4288	2778	712	790	8			

- Molecule 2 is a protein called HIV-1 REVERSE TRANSCRIPTASE.

Mol	Chain	Residues	Atoms					ZeroOcc	AltConf	Trace
2	B	395	Total	C	N	O	S	0	0	0
			3277	2135	541	595	6			

- Molecule 3 is 5-(3,5-DICHLOROPHENYL)THIO-4-ISOPROPYL-1-(PYRIDIN-4-YL-METHYL)-1H-IMIDAZOL-2-YL-METHYL CARBAMATE (three-letter code: S11) (formula:  $C_{20}H_{20}Cl_2N_4O_2S$ ).



Mol	Chain	Residues	Atoms					ZeroOcc	AltConf
3	A	1	Total	C	Cl	N	O	0	0
			29	20	2	4	2		

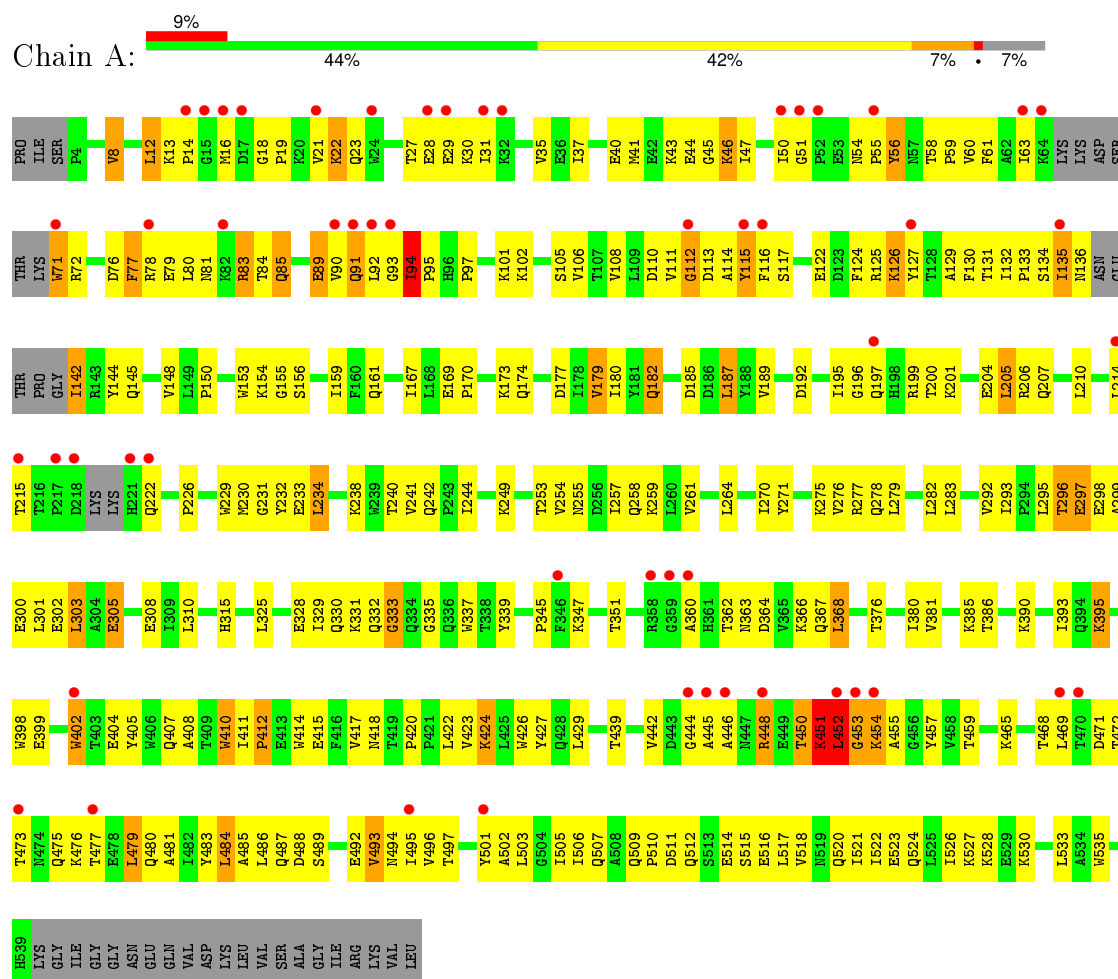
- Molecule 4 is water.

Mol	Chain	Residues	Atoms		ZeroOcc	AltConf
4	A	121	Total 121	O 121	0	0
4	B	76	Total 76	O 76	0	0

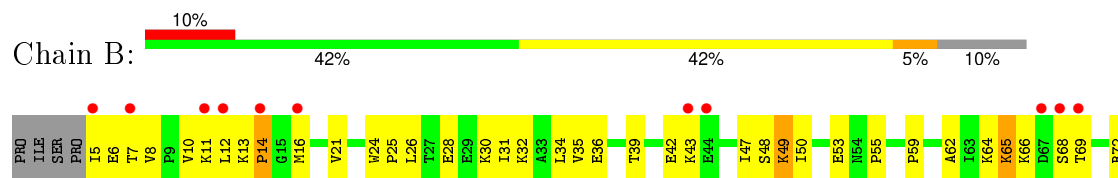
### 3 Residue-property plots

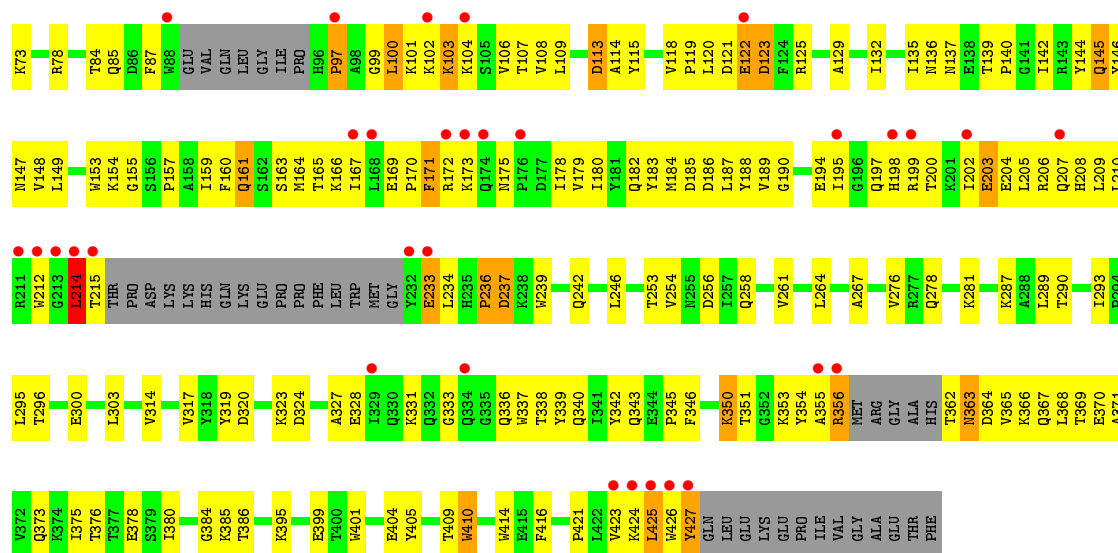
These plots are drawn for all protein, RNA and DNA chains in the entry. The first graphic for a chain summarises the proportions of errors displayed in the second graphic. The second graphic shows the sequence view annotated by issues in geometry and electron density. Residues are color-coded according to the number of geometric quality criteria for which they contain at least one outlier: green = 0, yellow = 1, orange = 2 and red = 3 or more. A red dot above a residue indicates a poor fit to the electron density ( $RSRZ > 2$ ). Stretches of 2 or more consecutive residues without any outlier are shown as a green connector. Residues present in the sample, but not in the model, are shown in grey.

#### • Molecule 1: HIV-1 REVERSE TRANSCRIPTASE



#### • Molecule 2: HIV-1 REVERSE TRANSCRIPTASE





## 4 Data and refinement statistics

Property	Value	Source
Space group	P 21 21 21	Depositor
Cell constants a, b, c, $\alpha$ , $\beta$ , $\gamma$	135.70 Å   118.00 Å   67.30 Å 90.00°   90.00°   90.00°	Depositor
Resolution (Å)	30.00 – 2.50 27.02 – 2.48	Depositor EDS
% Data completeness (in resolution range)	91.0 (30.00-2.50) 90.0 (27.02-2.48)	Depositor EDS
$R_{merge}$	0.05	Depositor
$R_{sym}$	(Not available)	Depositor
$\langle I/\sigma(I) \rangle$ <sup>1</sup>	4.98 (at 2.47 Å)	Xtriage
Refinement program	CNS 0.9	Depositor
R, $R_{free}$	0.254   ,   0.330 0.261   ,   (Not available)	Depositor DCC
$R_{free}$ test set	No test flags present.	DCC
Wilson B-factor (Å <sup>2</sup> )	56.2	Xtriage
Anisotropy	0.632	Xtriage
Bulk solvent $k_{sol}$ (e/Å <sup>3</sup> ), $B_{sol}$ (Å <sup>2</sup> )	0.35 , 80.3	EDS
Estimated twinning fraction	No twinning to report.	Xtriage
L-test for twinning <sup>2</sup>	$\langle  L  \rangle = 0.49$ , $\langle L^2 \rangle = 0.33$	Xtriage
Outliers	1 of 34991 reflections (0.003%)	Xtriage
$F_o, F_c$ correlation	0.94	EDS
Total number of atoms	7791	wwPDB-VP
Average B, all atoms (Å <sup>2</sup> )	70.0	wwPDB-VP

Xtriage's analysis on translational NCS is as follows: *The largest off-origin peak in the Patterson function is 3.73% of the height of the origin peak. No significant pseudotranslation is detected.*

<sup>1</sup> Intensities estimated from amplitudes.

<sup>2</sup> Theoretical values of  $\langle |L| \rangle$ ,  $\langle L^2 \rangle$  for acentric reflections are 0.5, 0.375 respectively for untwinned datasets, and 0.333, 0.2 for perfectly twinned datasets.

## 5 Model quality [i](#)

### 5.1 Standard geometry [i](#)

Bond lengths and bond angles in the following residue types are not validated in this section: CSD, S11

The Z score for a bond length (or angle) is the number of standard deviations the observed value is removed from the expected value. A bond length (or angle) with  $|Z| > 5$  is considered an outlier worth inspection. RMSZ is the root-mean-square of all Z scores of the bond lengths (or angles).

Mol	Chain	Bond lengths		Bond angles	
		RMSZ	$\# Z  > 5$	RMSZ	$\# Z  > 5$
1	A	0.47	0/4392	0.70	3/5969 (0.1%)
2	B	0.46	0/3368	0.70	0/4574
All	All	0.47	0/7760	0.70	3/10543 (0.0%)

There are no bond length outliers.

All (3) bond angle outliers are listed below:

Mol	Chain	Res	Type	Atoms	Z	Observed(°)	Ideal(°)
1	A	94	ILE	C-N-CD	-6.23	106.89	120.60
1	A	451	LYS	N-CA-C	5.64	126.24	111.00
1	A	452	LEU	N-CA-C	-5.43	96.33	111.00

There are no chirality outliers.

There are no planarity outliers.

### 5.2 Too-close contacts [i](#)

In the following table, the Non-H and H(model) columns list the number of non-hydrogen atoms and hydrogen atoms in the chain respectively. The H(added) column lists the number of hydrogen atoms added and optimized by MolProbity. The Clashes column lists the number of clashes within the asymmetric unit, whereas Symm-Clashes lists symmetry related clashes.

Mol	Chain	Non-H	H(model)	H(added)	Clashes	Symm-Clashes
1	A	4288	0	4315	307	0
2	B	3277	0	3306	214	0
3	A	29	0	20	2	0
4	A	121	0	0	9	0
4	B	76	0	0	10	0
All	All	7791	0	7641	505	0



The all-atom clashscore is defined as the number of clashes found per 1000 atoms (including hydrogen atoms). The all-atom clashscore for this structure is 33.

All (505) close contacts within the same asymmetric unit are listed below, sorted by their clash magnitude.

Atom-1	Atom-2	Interatomic distance (Å)	Clash overlap (Å)
2:B:194:GLU:HB3	2:B:197:GLN:HB2	1.33	1.11
1:A:451:LYS:H	1:A:451:LYS:HE2	0.95	1.06
2:B:50:ILE:HG21	2:B:145:GLN:HB3	1.37	1.03
2:B:84:THR:HG21	2:B:153:TRP:HE1	1.21	1.01
1:A:451:LYS:CD	1:A:472:THR:H	1.73	1.01
1:A:486:LEU:HB3	1:A:524:GLN:HG2	1.46	0.98
2:B:100:LEU:HD23	2:B:100:LEU:H	1.28	0.96
1:A:451:LYS:HE2	1:A:451:LYS:N	1.79	0.96
2:B:261:VAL:HG13	2:B:276:VAL:HG21	1.47	0.94
1:A:19:PRO:O	1:A:56:TYR:HB3	1.67	0.93
1:A:261:VAL:HG13	1:A:276:VAL:HG11	1.52	0.91
1:A:21:VAL:HG13	1:A:59:PRO:HD3	1.51	0.91
1:A:451:LYS:HD3	1:A:472:THR:H	1.32	0.91
1:A:451:LYS:CE	1:A:451:LYS:H	1.84	0.90
1:A:465:LYS:HE3	1:A:484:LEU:HD11	1.54	0.89
2:B:423:VAL:HG23	2:B:426:TRP:HB2	1.54	0.89
1:A:31:ILE:O	1:A:35:VAL:HG23	1.72	0.88
1:A:452:LEU:O	1:A:452:LEU:HG	1.74	0.88
2:B:170:PRO:HB2	2:B:208:HIS:CE1	2.09	0.87
1:A:516:GLU:O	1:A:520:GLN:HG3	1.73	0.87
1:A:195:ILE:HD12	1:A:199:ARG:HH12	1.38	0.86
1:A:444:GLY:HA3	1:A:477:THR:HG22	1.57	0.85
2:B:164:MET:O	2:B:167:ILE:HG13	1.76	0.85
1:A:13:LYS:HB3	1:A:14:PRO:HD2	1.56	0.84
1:A:46:LYS:HD2	1:A:116:PHE:HB3	1.59	0.84
1:A:332:GLN:HG2	1:A:333:GLY:H	1.43	0.83
1:A:363:ASN:HB2	1:A:511:ASP:OD2	1.78	0.83
1:A:486:LEU:HB3	1:A:524:GLN:CG	2.10	0.82
1:A:29:GLU:HG2	1:A:71:TRP:HZ2	1.46	0.81
1:A:457:TYR:HE2	1:A:484:LEU:HD12	1.46	0.81
1:A:296:THR:HG22	1:A:299:ALA:H	1.44	0.80
2:B:363:ASN:ND2	2:B:366:LYS:H	1.79	0.80
1:A:301:LEU:HD11	1:A:305:GLU:OE1	1.82	0.80
2:B:107:THR:HG21	2:B:202:ILE:HG12	1.62	0.80
2:B:50:ILE:CG2	2:B:145:GLN:HB3	2.10	0.80
1:A:150:PRO:HG2	1:A:153:TRP:HB2	1.64	0.79
1:A:94:ILE:HG22	1:A:95:PRO:C	2.02	0.79

*Continued on next page...*

*Continued from previous page...*

Atom-1	Atom-2	Interatomic distance (Å)	Clash overlap (Å)
2:B:180:ILE:HG22	2:B:189:VAL:HG22	1.62	0.79
2:B:287:LYS:HD2	2:B:293:ILE:HD11	1.65	0.79
1:A:177:ASP:HA	4:A:1010:HOH:O	1.80	0.79
2:B:200:THR:O	2:B:204:GLU:HG3	1.82	0.79
2:B:10:VAL:HG13	2:B:87:PHE:HZ	1.49	0.78
2:B:169:GLU:HB3	2:B:170:PRO:HD3	1.67	0.77
2:B:69:THR:HG22	2:B:69:THR:O	1.85	0.76
1:A:523:GLU:O	1:A:527:LYS:HG3	1.85	0.76
1:A:451:LYS:HD2	1:A:471:ASP:N	2.01	0.75
2:B:104:LYS:HA	2:B:237:ASP:OD1	1.87	0.75
2:B:163:SER:O	2:B:167:ILE:HG23	1.87	0.75
2:B:210:LEU:HG	2:B:215:THR:HA	1.68	0.74
2:B:210:LEU:O	2:B:210:LEU:HD23	1.87	0.74
1:A:132:ILE:O	1:A:142:ILE:HD12	1.88	0.74
2:B:171:PHE:O	2:B:175:ASN:HB2	1.88	0.73
1:A:452:LEU:HD11	1:A:454:LYS:HD3	1.71	0.73
1:A:95:PRO:HB3	2:B:136:ASN:O	1.90	0.72
2:B:170:PRO:HB2	2:B:208:HIS:NE2	2.05	0.72
2:B:369:THR:O	2:B:373:GLN:HG3	1.91	0.71
1:A:439:THR:HG21	2:B:289:LEU:HD13	1.73	0.71
1:A:408:ALA:HB1	2:B:364:ASP:HB3	1.72	0.71
2:B:8:VAL:HG21	2:B:159:ILE:HG23	1.73	0.70
2:B:424:LYS:HE2	4:B:1051:HOH:O	1.91	0.70
2:B:189:VAL:HG11	2:B:202:ILE:HG13	1.74	0.69
1:A:439:THR:CG2	2:B:289:LEU:HD13	2.23	0.69
1:A:398:TRP:CZ2	1:A:411:ILE:HB	2.28	0.69
1:A:210:LEU:HD12	1:A:215:THR:HA	1.74	0.69
2:B:338:THR:HG22	2:B:353:LYS:HG2	1.74	0.69
2:B:28:GLU:HG2	2:B:32:LYS:HE3	1.74	0.68
1:A:411:ILE:HD12	1:A:412:PRO:HD2	1.75	0.68
1:A:442:VAL:HB	1:A:481:ALA:HB1	1.75	0.68
1:A:200:THR:O	1:A:204:GLU:HG3	1.94	0.68
2:B:24:TRP:HB2	4:B:1065:HOH:O	1.93	0.67
1:A:507:GLN:HA	1:A:507:GLN:HE21	1.59	0.67
2:B:194:GLU:CB	2:B:197:GLN:HB2	2.20	0.67
1:A:442:VAL:HG11	1:A:485:ALA:HB2	1.77	0.67
1:A:278:GLN:HA	1:A:278:GLN:NE2	2.10	0.67
1:A:451:LYS:HD2	1:A:471:ASP:CA	2.25	0.66
1:A:507:GLN:HA	1:A:507:GLN:NE2	2.10	0.66
2:B:425:LEU:H	2:B:425:LEU:HD23	1.59	0.66
1:A:453:GLY:O	1:A:469:LEU:N	2.29	0.66

*Continued on next page...*

*Continued from previous page...*

Atom-1	Atom-2	Interatomic distance (Å)	Clash overlap (Å)
1:A:451:LYS:HD2	1:A:472:THR:H	1.58	0.66
1:A:89:GLU:CD	1:A:92:LEU:HD23	2.16	0.66
2:B:42:GLU:HA	2:B:47:ILE:O	1.95	0.66
1:A:114:ALA:HA	1:A:117:SER:CB	2.26	0.66
1:A:180:ILE:HG12	1:A:189:VAL:HG22	1.78	0.66
1:A:94:ILE:HG22	1:A:95:PRO:CA	2.25	0.66
2:B:10:VAL:HG13	2:B:87:PHE:CZ	2.31	0.66
1:A:27:THR:O	1:A:31:ILE:HG13	1.97	0.65
2:B:107:THR:CG2	2:B:189:VAL:HB	2.27	0.65
2:B:100:LEU:HD23	2:B:100:LEU:N	2.08	0.65
2:B:157:PRO:HG2	2:B:184:MET:HA	1.78	0.65
1:A:448:ARG:NE	1:A:448:ARG:H	1.94	0.65
1:A:170:PRO:O	1:A:173:LYS:HB2	1.96	0.65
1:A:451:LYS:CD	1:A:472:THR:N	2.55	0.65
1:A:169:GLU:HB3	1:A:170:PRO:HD3	1.78	0.65
1:A:21:VAL:HG13	1:A:59:PRO:CD	2.27	0.64
1:A:114:ALA:HB1	1:A:214:LEU:HD13	1.77	0.64
2:B:194:GLU:HB3	2:B:197:GLN:CB	2.19	0.64
1:A:132:ILE:O	1:A:142:ILE:N	2.30	0.64
2:B:99:GLY:HA2	2:B:102:LYS:HD2	1.79	0.64
1:A:71:TRP:HA	1:A:71:TRP:CE3	2.33	0.64
2:B:363:ASN:HD21	2:B:366:LYS:H	1.45	0.64
1:A:50:ILE:HD12	1:A:54:ASN:HB3	1.80	0.63
1:A:254:VAL:HG22	1:A:293:ILE:HD11	1.79	0.63
2:B:366:LYS:O	2:B:370:GLU:HG3	1.98	0.63
1:A:278:GLN:HA	1:A:278:GLN:HE21	1.62	0.63
1:A:167:ILE:O	1:A:170:PRO:HD2	1.97	0.63
2:B:180:ILE:HA	2:B:188:TYR:O	1.99	0.63
1:A:501:TYR:CZ	1:A:505:ILE:HD11	2.34	0.63
1:A:63:ILE:HG13	1:A:72:ARG:HB3	1.81	0.63
1:A:135:ILE:HG22	1:A:136:ASN:ND2	2.14	0.63
1:A:19:PRO:HG2	1:A:80:LEU:HB2	1.80	0.62
1:A:494:ASN:HB3	2:B:289:LEU:HD22	1.81	0.62
1:A:113:ASP:C	1:A:115:TYR:H	2.03	0.62
1:A:29:GLU:HG2	1:A:71:TRP:CZ2	2.31	0.62
1:A:296:THR:HG22	1:A:299:ALA:N	2.14	0.62
1:A:418:ASN:O	1:A:420:PRO:HD3	1.98	0.62
1:A:94:ILE:HG22	1:A:95:PRO:O	1.99	0.62
2:B:101:LYS:HA	2:B:236:PRO:HB3	1.82	0.62
1:A:31:ILE:HG12	1:A:133:PRO:HG2	1.82	0.62
2:B:203:GLU:HA	2:B:206:ARG:HD2	1.80	0.62

*Continued on next page...*

*Continued from previous page...*

Atom-1	Atom-2	Interatomic distance (Å)	Clash overlap (Å)
2:B:13:LYS:HG2	2:B:85:GLN:HA	1.82	0.62
2:B:31:ILE:O	2:B:35:VAL:HG12	1.99	0.62
2:B:278:GLN:O	2:B:281:LYS:HB2	2.00	0.62
1:A:114:ALA:HA	1:A:117:SER:HB2	1.81	0.61
2:B:132:ILE:HB	2:B:142:ILE:HB	1.81	0.61
1:A:142:ILE:N	1:A:142:ILE:HD12	2.16	0.61
2:B:28:GLU:HB2	2:B:135:ILE:HD11	1.82	0.61
1:A:410:TRP:HA	1:A:410:TRP:CE3	2.35	0.61
2:B:115:TYR:OH	2:B:157:PRO:HG3	2.00	0.61
1:A:518:VAL:O	1:A:522:ILE:HG13	2.01	0.61
1:A:411:ILE:CD1	1:A:412:PRO:HD2	2.31	0.60
2:B:84:THR:HG21	2:B:153:TRP:NE1	2.05	0.60
1:A:130:PHE:CZ	1:A:144:TYR:HB2	2.36	0.60
1:A:325:LEU:HD12	1:A:385:LYS:HD2	1.84	0.60
1:A:79:GLU:O	1:A:83:ARG:HD3	2.02	0.60
1:A:451:LYS:HD3	1:A:472:THR:N	2.10	0.60
1:A:40:GLU:O	1:A:44:GLU:HG3	2.02	0.60
2:B:363:ASN:HB2	4:B:1054:HOH:O	2.02	0.60
1:A:111:VAL:HG22	1:A:185:ASP:O	2.02	0.60
2:B:8:VAL:O	2:B:121:ASP:HB2	2.02	0.59
1:A:507:GLN:CA	1:A:507:GLN:HE21	2.14	0.59
2:B:153:TRP:CZ2	2:B:155:GLY:HA3	2.37	0.59
2:B:99:GLY:O	2:B:103:LYS:HG2	2.02	0.59
1:A:410:TRP:HE3	1:A:410:TRP:HA	1.67	0.59
2:B:165:THR:HG22	2:B:172:ARG:NH2	2.18	0.59
1:A:23:GLN:HB2	1:A:131:THR:CG2	2.32	0.59
1:A:296:THR:HG23	1:A:298:GLU:OE1	2.03	0.59
1:A:111:VAL:HG23	1:A:112:GLY:N	2.17	0.59
2:B:115:TYR:HB3	2:B:149:LEU:HB2	1.85	0.59
1:A:19:PRO:O	1:A:56:TYR:CB	2.46	0.59
1:A:257:ILE:HD12	1:A:293:ILE:HD12	1.85	0.59
1:A:337:TRP:HE1	1:A:367:GLN:NE2	2.01	0.59
1:A:486:LEU:CB	1:A:524:GLN:HG2	2.27	0.59
1:A:253:THR:O	1:A:257:ILE:HG13	2.01	0.59
1:A:446:ALA:C	1:A:452:LEU:HD23	2.23	0.59
1:A:455:ALA:HB2	1:A:477:THR:HG23	1.84	0.59
1:A:135:ILE:CD1	1:A:135:ILE:H	2.16	0.59
1:A:452:LEU:O	1:A:454:LYS:N	2.37	0.58
1:A:524:GLN:HE21	1:A:528:LYS:HE2	1.68	0.58
1:A:442:VAL:CG1	1:A:485:ALA:HB2	2.32	0.58
1:A:424:LYS:HB2	1:A:424:LYS:NZ	2.18	0.58

*Continued on next page...*

*Continued from previous page...*

Atom-1	Atom-2	Interatomic distance (Å)	Clash overlap (Å)
1:A:452:LEU:O	1:A:454:LYS:HG2	2.03	0.58
2:B:169:GLU:CG	2:B:173:LYS:HB2	2.33	0.58
2:B:320:ASP:OD2	2:B:323:LYS:HE3	2.02	0.58
1:A:335:GLY:HA2	1:A:367:GLN:HE22	1.69	0.58
1:A:395:LYS:HE2	1:A:399:GLU:OE2	2.04	0.58
1:A:405:TYR:CE2	1:A:407:GLN:HB2	2.37	0.58
2:B:102:LYS:O	2:B:237:ASP:HB3	2.03	0.58
1:A:23:GLN:HE22	1:A:60:VAL:H	1.50	0.58
2:B:108:VAL:HA	2:B:187:LEU:O	2.04	0.58
1:A:261:VAL:HG13	1:A:276:VAL:CG1	2.31	0.58
1:A:418:ASN:OD1	1:A:422:LEU:HD11	2.03	0.58
1:A:503:LEU:C	1:A:503:LEU:HD13	2.24	0.57
1:A:101:LYS:HE2	4:B:1003:HOH:O	2.04	0.57
1:A:12:LEU:HD22	1:A:12:LEU:N	2.18	0.57
1:A:468:THR:C	1:A:469:LEU:HD22	2.24	0.57
2:B:125:ARG:HB3	2:B:146:TYR:O	2.03	0.57
2:B:28:GLU:CB	2:B:135:ILE:HD11	2.33	0.57
1:A:85:GLN:HE22	2:B:53:GLU:HB2	1.68	0.57
2:B:239:TRP:CZ2	2:B:378:GLU:HG2	2.39	0.57
1:A:270:ILE:HG13	1:A:271:TYR:CD2	2.40	0.57
2:B:185:ASP:HB2	2:B:409:THR:HG21	1.87	0.56
1:A:195:ILE:HD12	1:A:199:ARG:NH1	2.16	0.56
1:A:410:TRP:HB2	2:B:365:VAL:HG21	1.86	0.56
1:A:114:ALA:HB1	1:A:214:LEU:CD1	2.35	0.56
2:B:108:VAL:O	2:B:109:LEU:HD13	2.05	0.56
2:B:107:THR:HG23	2:B:189:VAL:HB	1.86	0.56
1:A:114:ALA:CB	1:A:214:LEU:HD13	2.36	0.56
2:B:10:VAL:HG22	2:B:159:ILE:HD11	1.88	0.56
2:B:69:THR:CG2	2:B:69:THR:O	2.54	0.56
1:A:408:ALA:CB	2:B:364:ASP:HB3	2.35	0.56
1:A:275:LYS:HD3	4:A:1117:HOH:O	2.05	0.56
2:B:30:LYS:HD2	4:B:1067:HOH:O	2.06	0.56
1:A:480:GLN:NE2	1:A:517:LEU:HD11	2.21	0.56
1:A:45:GLY:O	1:A:47:ILE:N	2.39	0.56
2:B:115:TYR:HB3	2:B:149:LEU:CB	2.36	0.55
1:A:43:LYS:O	1:A:43:LYS:HG2	2.06	0.55
1:A:337:TRP:HE1	1:A:367:GLN:HE21	1.53	0.55
2:B:366:LYS:HG3	2:B:405:TYR:CD2	2.41	0.55
1:A:453:GLY:HA3	1:A:469:LEU:HB2	1.88	0.55
1:A:111:VAL:HG23	1:A:112:GLY:H	1.72	0.55
1:A:426:TRP:O	1:A:427:TYR:HB3	2.06	0.55

*Continued on next page...*

*Continued from previous page...*

Atom-1	Atom-2	Interatomic distance (Å)	Clash overlap (Å)
1:A:479:LEU:HD21	1:A:501:TYR:CE2	2.42	0.55
1:A:28:GLU:OE1	1:A:135:ILE:O	2.25	0.55
2:B:97:PRO:O	2:B:100:LEU:CD2	2.54	0.55
1:A:296:THR:HG22	1:A:298:GLU:N	2.22	0.55
2:B:363:ASN:HD21	2:B:366:LYS:HB2	1.72	0.55
1:A:297:GLU:HG3	1:A:298:GLU:N	2.22	0.55
1:A:19:PRO:CG	1:A:80:LEU:HB2	2.37	0.54
1:A:475:GLN:HB2	1:A:501:TYR:CD2	2.41	0.54
2:B:172:ARG:HA	2:B:175:ASN:HB2	1.88	0.54
1:A:182:GLN:HB2	4:A:1177:HOH:O	2.07	0.54
1:A:483:TYR:CE1	1:A:520:GLN:HB3	2.43	0.54
1:A:46:LYS:CD	1:A:116:PHE:HB3	2.35	0.54
1:A:332:GLN:HG2	1:A:333:GLY:N	2.17	0.54
1:A:71:TRP:HA	1:A:71:TRP:HE3	1.70	0.54
1:A:448:ARG:HE	1:A:448:ARG:H	1.55	0.54
1:A:331:LYS:HE3	1:A:364:ASP:OD1	2.08	0.54
1:A:364:ASP:HB3	1:A:423:VAL:HG13	1.90	0.54
2:B:161:GLN:C	2:B:161:GLN:HE21	2.11	0.54
2:B:395:LYS:O	2:B:399:GLU:HG3	2.08	0.54
2:B:214:LEU:HD23	2:B:214:LEU:H	1.73	0.54
1:A:277:ARG:HH11	1:A:277:ARG:HG2	1.72	0.54
2:B:423:VAL:HG22	2:B:427:TYR:HB2	1.91	0.53
1:A:452:LEU:HD11	1:A:454:LYS:CD	2.38	0.53
2:B:118:VAL:HB	2:B:149:LEU:HG	1.89	0.53
2:B:371:ALA:O	2:B:375:ILE:HG13	2.09	0.53
1:A:135:ILE:HD12	1:A:135:ILE:H	1.73	0.53
2:B:246:LEU:HD11	2:B:264:LEU:HD21	1.91	0.53
1:A:150:PRO:HG2	1:A:153:TRP:CB	2.36	0.53
1:A:47:ILE:HD12	1:A:144:TYR:CD2	2.44	0.53
2:B:199:ARG:O	2:B:203:GLU:HB2	2.09	0.53
2:B:363:ASN:HD21	2:B:366:LYS:CB	2.22	0.53
1:A:496:VAL:CG2	2:B:289:LEU:HD11	2.38	0.53
2:B:24:TRP:CG	2:B:25:PRO:HD2	2.43	0.53
1:A:91:GLN:CA	1:A:91:GLN:HE21	2.21	0.53
2:B:296:THR:O	2:B:300:GLU:HG3	2.09	0.53
2:B:363:ASN:C	2:B:363:ASN:HD22	2.12	0.53
2:B:26:LEU:HA	4:B:1067:HOH:O	2.08	0.53
2:B:345:PRO:O	2:B:346:PHE:HB2	2.08	0.52
1:A:210:LEU:CD1	1:A:215:THR:HA	2.39	0.52
1:A:472:THR:OG1	1:A:476:LYS:HB3	2.09	0.52
2:B:354:TYR:OH	2:B:370:GLU:OE1	2.28	0.52

*Continued on next page...*

*Continued from previous page...*

Atom-1	Atom-2	Interatomic distance (Å)	Clash overlap (Å)
2:B:186:ASP:HB3	2:B:188:TYR:CE1	2.45	0.52
1:A:453:GLY:O	1:A:468:THR:HA	2.08	0.52
2:B:125:ARG:HD3	2:B:147:ASN:HA	1.91	0.52
2:B:161:GLN:CA	2:B:161:GLN:HE21	2.23	0.52
1:A:21:VAL:CG1	1:A:59:PRO:HD3	2.33	0.52
1:A:92:LEU:HD12	2:B:140:PRO:O	2.10	0.52
2:B:73:LYS:NZ	2:B:146:TYR:OH	2.42	0.52
1:A:13:LYS:HB2	1:A:16:MET:HG3	1.92	0.52
1:A:40:GLU:HG3	1:A:44:GLU:OE2	2.09	0.52
1:A:376:THR:O	1:A:380:ILE:HG13	2.10	0.52
2:B:423:VAL:CG2	2:B:426:TRP:HB2	2.33	0.52
1:A:295:LEU:HD12	1:A:300:GLU:OE2	2.10	0.52
1:A:480:GLN:HG2	1:A:517:LEU:HD21	1.92	0.52
2:B:153:TRP:CE2	2:B:155:GLY:HA3	2.45	0.51
1:A:457:TYR:CE2	1:A:484:LEU:HD12	2.35	0.51
2:B:32:LYS:O	2:B:35:VAL:HG13	2.10	0.51
2:B:261:VAL:HG13	2:B:276:VAL:CG2	2.32	0.51
1:A:81:ASN:HB3	1:A:154:LYS:HB2	1.91	0.51
1:A:480:GLN:HE21	1:A:517:LEU:HD11	1.76	0.51
1:A:517:LEU:O	1:A:521:ILE:HG13	2.09	0.51
2:B:5:ILE:HG22	2:B:6:GLU:N	2.26	0.51
1:A:451:LYS:HD2	1:A:472:THR:N	2.20	0.51
2:B:167:ILE:HD12	2:B:167:ILE:C	2.30	0.51
1:A:8:VAL:HG11	1:A:159:ILE:HG23	1.91	0.51
1:A:135:ILE:HD12	1:A:135:ILE:N	2.25	0.51
2:B:423:VAL:O	2:B:423:VAL:HG13	2.10	0.51
2:B:166:LYS:O	2:B:166:LYS:HG2	2.10	0.51
2:B:287:LYS:CD	2:B:293:ILE:HD11	2.40	0.51
1:A:366:LYS:HE3	1:A:405:TYR:OH	2.11	0.50
1:A:446:ALA:O	1:A:452:LEU:HD23	2.11	0.50
1:A:94:ILE:HG22	1:A:95:PRO:N	2.26	0.50
2:B:331:LYS:HB2	2:B:337:TRP:CZ3	2.46	0.50
1:A:19:PRO:HD3	1:A:80:LEU:HD13	1.94	0.50
2:B:169:GLU:HG3	2:B:173:LYS:HB2	1.92	0.50
2:B:209:LEU:HB3	2:B:214:LEU:HD21	1.92	0.50
1:A:395:LYS:C	1:A:395:LYS:HD3	2.32	0.50
2:B:254:VAL:O	2:B:258:GLN:HG3	2.10	0.50
2:B:376:THR:O	2:B:380:ILE:HG13	2.11	0.50
1:A:410:TRP:CE3	1:A:411:ILE:N	2.80	0.50
1:A:106:VAL:HG13	3:A:999:S11:H133	1.93	0.50
2:B:164:MET:HG2	2:B:182:GLN:HE22	1.77	0.50

*Continued on next page...*

*Continued from previous page...*

Atom-1	Atom-2	Interatomic distance (Å)	Clash overlap (Å)
1:A:328:GLU:O	1:A:339:TYR:HA	2.12	0.50
1:A:255:ASN:OD1	1:A:259:LYS:HE2	2.10	0.50
1:A:50:ILE:HD12	1:A:54:ASN:CB	2.42	0.50
2:B:395:LYS:HG3	2:B:416:PHE:CE1	2.47	0.50
1:A:257:ILE:O	1:A:261:VAL:HG23	2.12	0.49
1:A:399:GLU:HG3	1:A:402:TRP:CE3	2.47	0.49
1:A:308:GLU:HA	1:A:308:GLU:OE2	2.11	0.49
2:B:202:ILE:HD12	2:B:202:ILE:N	2.26	0.49
1:A:410:TRP:HD1	2:B:401:TRP:CD1	2.31	0.49
2:B:64:LYS:HG3	2:B:64:LYS:O	2.13	0.49
2:B:207:GLN:O	2:B:207:GLN:HG2	2.12	0.49
2:B:129:ALA:HA	2:B:144:TYR:O	2.12	0.49
1:A:362:THR:HG23	1:A:512:GLN:HE22	1.77	0.49
1:A:113:ASP:C	1:A:115:TYR:N	2.64	0.49
1:A:102:LYS:HG3	3:A:999:S11:N24	2.27	0.49
1:A:244:ILE:HB	1:A:310:LEU:HD22	1.94	0.49
2:B:423:VAL:HG22	2:B:423:VAL:O	2.12	0.49
1:A:95:PRO:CB	2:B:136:ASN:O	2.57	0.49
1:A:495:ILE:HB	1:A:533:LEU:HD13	1.95	0.49
1:A:332:GLN:O	1:A:333:GLY:O	2.30	0.49
1:A:296:THR:CG2	1:A:298:GLU:H	2.26	0.49
1:A:276:VAL:O	1:A:276:VAL:HG12	2.12	0.49
2:B:214:LEU:CD2	2:B:214:LEU:H	2.25	0.49
2:B:13:LYS:HB2	2:B:16:MET:HG3	1.94	0.49
1:A:515:SER:HB3	1:A:518:VAL:HB	1.94	0.49
1:A:125:ARG:O	1:A:127:TYR:N	2.46	0.49
1:A:60:VAL:HG12	1:A:61:PHE:N	2.27	0.49
1:A:514:GLU:CD	1:A:514:GLU:H	2.16	0.49
1:A:122:GLU:HA	1:A:125:ARG:HD2	1.95	0.49
2:B:160:PHE:CD1	2:B:164:MET:HB2	2.47	0.49
1:A:368:LEU:HD12	1:A:423:VAL:HG21	1.93	0.49
2:B:202:ILE:C	2:B:204:GLU:N	2.66	0.48
2:B:21:VAL:HB	2:B:59:PRO:HD3	1.95	0.48
2:B:12:LEU:O	2:B:13:LYS:C	2.52	0.48
2:B:314:VAL:HG13	2:B:317:VAL:HG21	1.94	0.48
1:A:444:GLY:CA	1:A:477:THR:HG22	2.35	0.48
2:B:170:PRO:O	2:B:208:HIS:CE1	2.67	0.48
2:B:180:ILE:O	2:B:180:ILE:HG13	2.13	0.48
2:B:85:GLN:O	2:B:85:GLN:HG3	2.12	0.48
1:A:197:GLN:O	1:A:201:LYS:HG2	2.12	0.48
1:A:50:ILE:HG13	1:A:51:GLY:N	2.29	0.48

*Continued on next page...*



*Continued from previous page...*

Atom-1	Atom-2	Interatomic distance (Å)	Clash overlap (Å)
1:A:90:VAL:HG13	1:A:161:GLN:NE2	2.29	0.48
2:B:333:GLY:O	2:B:336:GLN:HB2	2.13	0.48
2:B:107:THR:HG22	2:B:189:VAL:O	2.13	0.48
1:A:114:ALA:HA	1:A:117:SER:HB3	1.94	0.48
2:B:154:LYS:O	2:B:157:PRO:HD2	2.13	0.48
2:B:169:GLU:HG2	2:B:173:LYS:HB2	1.94	0.48
1:A:479:LEU:CD2	1:A:501:TYR:HE2	2.27	0.48
1:A:480:GLN:HE21	1:A:517:LEU:CD1	2.27	0.48
1:A:429:LEU:HD11	1:A:506:ILE:HG22	1.94	0.48
1:A:58:THR:HG23	1:A:76:ASP:O	2.14	0.47
1:A:241:VAL:HG12	1:A:242:GLN:O	2.14	0.47
1:A:111:VAL:HG22	1:A:185:ASP:C	2.34	0.47
1:A:404:GLU:HB2	4:A:1141:HOH:O	2.14	0.47
1:A:398:TRP:CH2	1:A:411:ILE:HB	2.49	0.47
1:A:489:SER:OG	1:A:493:VAL:HG21	2.14	0.47
1:A:417:VAL:O	1:A:417:VAL:HG13	2.14	0.47
2:B:10:VAL:HG12	2:B:11:LYS:N	2.30	0.47
1:A:126:LYS:HG3	1:A:127:TYR:N	2.29	0.47
1:A:278:GLN:CA	1:A:278:GLN:HE21	2.18	0.47
1:A:50:ILE:HG13	1:A:51:GLY:H	1.79	0.47
2:B:48:SER:O	2:B:49:LYS:C	2.52	0.47
2:B:214:LEU:N	2:B:214:LEU:HD23	2.30	0.47
2:B:139:THR:HG22	2:B:140:PRO:HD2	1.96	0.47
1:A:368:LEU:O	1:A:368:LEU:HD23	2.15	0.47
2:B:421:PRO:HG2	2:B:424:LYS:HB3	1.96	0.47
1:A:427:TYR:OH	1:A:509:GLN:HA	2.14	0.47
2:B:34:LEU:HG	2:B:62:ALA:HB2	1.97	0.47
2:B:328:GLU:OE1	2:B:342:TYR:OH	2.29	0.47
1:A:360:ALA:HB1	1:A:514:GLU:OE1	2.15	0.46
1:A:195:ILE:HG13	1:A:196:GLY:N	2.30	0.46
2:B:253:THR:H	2:B:256:ASP:HB2	1.81	0.46
2:B:97:PRO:O	2:B:100:LEU:HD21	2.14	0.46
2:B:276:VAL:HG12	4:B:1086:HOH:O	2.15	0.46
2:B:160:PHE:HD1	2:B:164:MET:HB2	1.81	0.46
2:B:205:LEU:HG	2:B:209:LEU:CD1	2.46	0.46
2:B:380:ILE:O	2:B:384:GLY:HA2	2.16	0.46
2:B:236:PRO:HA	2:B:239:TRP:CE3	2.50	0.46
1:A:23:GLN:HB2	1:A:131:THR:HG21	1.96	0.46
2:B:314:VAL:HG13	2:B:317:VAL:CG2	2.45	0.46
1:A:495:ILE:HB	1:A:533:LEU:CD1	2.46	0.46
1:A:255:ASN:HB3	4:A:1023:HOH:O	2.16	0.46

*Continued on next page...*

*Continued from previous page...*

Atom-1	Atom-2	Interatomic distance (Å)	Clash overlap (Å)
1:A:347:LYS:HD2	1:A:347:LYS:HA	1.81	0.46
2:B:78:ARG:HA	4:B:1195:HOH:O	2.16	0.46
2:B:276:VAL:HG22	2:B:276:VAL:O	2.16	0.46
1:A:445:ALA:H	1:A:477:THR:HG21	1.80	0.46
1:A:93:GLY:HA3	2:B:137:ASN:ND2	2.31	0.46
1:A:153:TRP:HZ3	1:A:159:ILE:HD12	1.81	0.46
1:A:124:PHE:O	1:A:127:TYR:HD2	1.98	0.45
1:A:411:ILE:HD12	1:A:412:PRO:CD	2.44	0.45
2:B:203:GLU:O	2:B:203:GLU:OE2	2.34	0.45
1:A:426:TRP:HB3	1:A:526:ILE:CD1	2.46	0.45
2:B:103:LYS:NZ	2:B:179:VAL:HG12	2.31	0.45
1:A:71:TRP:CA	1:A:71:TRP:CE3	2.99	0.45
1:A:393:ILE:HD13	1:A:398:TRP:HB2	1.99	0.45
2:B:43:LYS:HE3	2:B:43:LYS:HB2	1.85	0.45
2:B:13:LYS:HA	2:B:14:PRO:HD2	1.80	0.45
1:A:402:TRP:CD1	1:A:402:TRP:C	2.90	0.45
2:B:169:GLU:O	2:B:171:PHE:N	2.40	0.45
1:A:155:GLY:O	1:A:159:ILE:HG13	2.17	0.45
1:A:390:LYS:HA	1:A:415:GLU:O	2.16	0.45
1:A:229:TRP:O	1:A:230:MET:C	2.55	0.45
2:B:423:VAL:O	2:B:427:TYR:HB2	2.17	0.45
2:B:106:VAL:HG21	2:B:236:PRO:HG2	1.98	0.45
1:A:179:VAL:O	1:A:189:VAL:HA	2.16	0.45
2:B:65:LYS:CE	2:B:72:ARG:HD2	2.47	0.45
1:A:381:VAL:HG22	2:B:25:PRO:HB3	1.99	0.45
1:A:108:VAL:HA	1:A:187:LEU:O	2.15	0.45
1:A:487:GLN:HG3	1:A:488:ASP:OD1	2.17	0.44
2:B:113:ASP:O	2:B:114:ALA:C	2.55	0.44
2:B:183:TYR:O	2:B:186:ASP:HB2	2.17	0.44
1:A:329:ILE:HG22	1:A:330:GLN:N	2.31	0.44
1:A:77:PHE:HB3	1:A:81:ASN:HD21	1.82	0.44
1:A:439:THR:HG23	2:B:289:LEU:HD13	1.97	0.44
1:A:29:GLU:CG	1:A:71:TRP:HZ2	2.23	0.44
1:A:410:TRP:CE3	1:A:410:TRP:CA	3.00	0.44
2:B:120:LEU:HB2	2:B:148:VAL:O	2.18	0.44
1:A:240:THR:HG22	1:A:315:HIS:HB3	1.99	0.44
1:A:148:VAL:O	1:A:150:PRO:N	2.51	0.44
2:B:421:PRO:HG3	4:B:1051:HOH:O	2.16	0.44
1:A:325:LEU:HD12	1:A:385:LYS:CD	2.48	0.44
1:A:296:THR:HG22	1:A:298:GLU:H	1.82	0.44
2:B:363:ASN:ND2	2:B:366:LYS:CB	2.81	0.44

*Continued on next page...*

*Continued from previous page...*

Atom-1	Atom-2	Interatomic distance (Å)	Clash overlap (Å)
2:B:106:VAL:HG12	2:B:107:THR:N	2.33	0.44
2:B:28:GLU:CG	2:B:135:ILE:HD11	2.47	0.44
2:B:319:TYR:OH	2:B:385:LYS:HD3	2.17	0.44
2:B:179:VAL:O	2:B:190:GLY:N	2.44	0.44
1:A:492:GLU:HG2	1:A:530:LYS:HB2	1.99	0.44
1:A:465:LYS:NZ	1:A:488:ASP:OD2	2.48	0.44
2:B:363:ASN:ND2	2:B:363:ASN:N	2.65	0.44
2:B:202:ILE:C	2:B:204:GLU:H	2.22	0.44
1:A:395:LYS:O	1:A:395:LYS:HD3	2.18	0.44
1:A:472:THR:OG1	1:A:476:LYS:CB	2.66	0.43
1:A:253:THR:HG22	1:A:292:VAL:HG22	2.00	0.43
2:B:114:ALA:HB2	2:B:214:LEU:HD13	1.99	0.43
1:A:12:LEU:HD22	1:A:12:LEU:H	1.80	0.43
1:A:303:LEU:CD2	1:A:303:LEU:O	2.66	0.43
2:B:39:THR:O	2:B:42:GLU:HB3	2.18	0.43
1:A:376:THR:HG23	1:A:386:THR:HG22	1.99	0.43
2:B:376:THR:CG2	2:B:386:THR:HG22	2.48	0.43
1:A:226:PRO:HA	1:A:234:LEU:O	2.18	0.43
1:A:279:LEU:HD12	1:A:302:GLU:OE1	2.18	0.43
2:B:425:LEU:N	2:B:425:LEU:HD23	2.30	0.43
1:A:479:LEU:CD2	1:A:501:TYR:CE2	3.02	0.43
1:A:457:TYR:C	1:A:457:TYR:CD1	2.92	0.43
1:A:77:PHE:HE1	1:A:150:PRO:HB2	1.83	0.43
2:B:103:LYS:HZ2	2:B:179:VAL:HG12	1.83	0.43
1:A:479:LEU:HD21	1:A:501:TYR:HE2	1.82	0.43
1:A:517:LEU:HA	1:A:517:LEU:HD12	1.78	0.43
2:B:107:THR:CG2	2:B:202:ILE:HG12	2.41	0.43
1:A:110:ASP:OD1	1:A:111:VAL:N	2.51	0.43
1:A:37:ILE:O	1:A:41:MET:HG3	2.18	0.43
2:B:355:ALA:O	2:B:356:ARG:C	2.56	0.43
2:B:32:LYS:O	2:B:35:VAL:CG1	2.66	0.43
2:B:139:THR:CG2	2:B:140:PRO:HD2	2.48	0.43
2:B:165:THR:C	2:B:167:ILE:H	2.22	0.43
1:A:18:GLY:HA3	1:A:56:TYR:CD1	2.53	0.42
2:B:178:ILE:HG12	2:B:179:VAL:N	2.33	0.42
1:A:134:SER:O	1:A:136:ASN:N	2.51	0.42
1:A:12:LEU:CD2	1:A:12:LEU:H	2.32	0.42
1:A:231:GLY:C	1:A:242:GLN:HG3	2.40	0.42
1:A:153:TRP:HE3	1:A:156:SER:OG	2.01	0.42
2:B:327:ALA:HA	2:B:340:GLN:O	2.19	0.42
1:A:56:TYR:HE2	1:A:126:LYS:HD3	1.83	0.42

*Continued on next page...*

*Continued from previous page...*

Atom-1	Atom-2	Interatomic distance (Å)	Clash overlap (Å)
1:A:129:ALA:HA	1:A:144:TYR:O	2.20	0.42
2:B:164:MET:HG2	2:B:182:GLN:NE2	2.33	0.42
2:B:404:GLU:HB3	2:B:405:TYR:CD1	2.54	0.42
1:A:135:ILE:CD1	1:A:135:ILE:N	2.80	0.42
1:A:205:LEU:O	1:A:206:ARG:C	2.56	0.42
1:A:497:THR:O	1:A:535:TRP:HA	2.19	0.42
2:B:157:PRO:CG	2:B:184:MET:HA	2.46	0.42
2:B:362:THR:HB	2:B:367:GLN:HE21	1.84	0.42
2:B:47:ILE:HA	2:B:145:GLN:O	2.20	0.42
2:B:65:LYS:NZ	2:B:72:ARG:HD2	2.34	0.42
2:B:410:TRP:HE3	2:B:410:TRP:O	2.03	0.42
2:B:324:ASP:O	2:B:343:GLN:HG2	2.20	0.42
1:A:125:ARG:O	1:A:126:LYS:C	2.58	0.42
1:A:112:GLY:C	1:A:114:ALA:N	2.73	0.42
1:A:522:ILE:O	1:A:526:ILE:HG13	2.20	0.42
2:B:328:GLU:O	2:B:339:TYR:HA	2.20	0.42
1:A:448:ARG:N	1:A:448:ARG:NE	2.66	0.42
1:A:195:ILE:CD1	1:A:199:ARG:HH12	2.20	0.41
1:A:506:ILE:HD12	1:A:533:LEU:HD21	2.02	0.41
1:A:503:LEU:HD22	1:A:507:GLN:HG2	2.02	0.41
1:A:12:LEU:HB3	1:A:83:ARG:O	2.20	0.41
2:B:100:LEU:H	2:B:100:LEU:CD2	2.11	0.41
1:A:22:LYS:HG2	1:A:23:GLN:N	2.36	0.41
2:B:103:LYS:HD3	2:B:103:LYS:HA	1.76	0.41
2:B:13:LYS:CG	2:B:85:GLN:HA	2.47	0.41
1:A:80:LEU:O	1:A:84:THR:OG1	2.36	0.41
1:A:254:VAL:O	1:A:258:GLN:HG3	2.21	0.41
1:A:445:ALA:N	1:A:477:THR:HG21	2.35	0.41
1:A:509:GLN:N	1:A:510:PRO:CD	2.82	0.41
2:B:53:GLU:O	2:B:55:PRO:HD3	2.21	0.41
1:A:12:LEU:CD2	1:A:12:LEU:N	2.81	0.41
1:A:58:THR:N	4:A:1001:HOH:O	2.54	0.41
1:A:249:LYS:HE2	4:A:1020:HOH:O	2.20	0.41
1:A:13:LYS:HB3	1:A:14:PRO:CD	2.38	0.41
1:A:479:LEU:HD12	1:A:479:LEU:HA	1.79	0.41
1:A:450:THR:HA	1:A:451:LYS:HE2	2.03	0.41
1:A:486:LEU:HD13	1:A:524:GLN:HB3	2.03	0.41
1:A:27:THR:H	1:A:30:LYS:HD2	1.86	0.41
2:B:202:ILE:O	2:B:205:LEU:N	2.53	0.41
1:A:408:ALA:HB2	2:B:337:TRP:HH2	1.85	0.41
2:B:32:LYS:O	2:B:36:GLU:HG3	2.21	0.41

*Continued on next page...*

Continued from previous page...

Atom-1	Atom-2	Interatomic distance (Å)	Clash overlap (Å)
1:A:92:LEU:HG	4:A:1157:HOH:O	2.20	0.41
1:A:134:SER:O	1:A:135:ILE:C	2.58	0.41
2:B:161:GLN:CA	2:B:161:GLN:NE2	2.84	0.41
1:A:91:GLN:CA	1:A:91:GLN:NE2	2.84	0.41
1:A:153:TRP:HB3	1:A:156:SER:OG	2.21	0.41
1:A:111:VAL:CG2	1:A:112:GLY:H	2.34	0.41
2:B:7:THR:HG22	2:B:119:PRO:HB2	2.02	0.41
2:B:350:LYS:HG3	2:B:351:THR:N	2.35	0.41
2:B:198:HIS:O	2:B:199:ARG:C	2.59	0.40
1:A:233:GLU:HB2	1:A:240:THR:OG1	2.21	0.40
1:A:479:LEU:HD11	1:A:502:ALA:HA	2.03	0.40
2:B:233:GLU:CD	2:B:233:GLU:H	2.24	0.40
1:A:19:PRO:O	1:A:56:TYR:CA	2.69	0.40
2:B:290:THR:HB	4:B:1057:HOH:O	2.21	0.40
1:A:362:THR:HG23	1:A:512:GLN:NE2	2.36	0.40
1:A:192:ASP:HB2	4:A:1108:HOH:O	2.20	0.40
1:A:97:PRO:HG2	1:A:232:TYR:CD2	2.56	0.40

There are no symmetry-related clashes.

## 5.3 Torsion angles ⓘ

### 5.3.1 Protein backbone ⓘ

In the following table, the Percentiles column shows the percent Ramachandran outliers of the chain as a percentile score with respect to all X-ray entries followed by that with respect to entries of similar resolution.

The Analysed column shows the number of residues for which the backbone conformation was analysed, and the total number of residues.

Mol	Chain	Analysed	Favoured	Allowed	Outliers	Percentiles	
1	A	514/560 (92%)	435 (85%)	66 (13%)	13 (2%)	7	10
2	B	387/440 (88%)	331 (86%)	42 (11%)	14 (4%)	4	5
All	All	901/1000 (90%)	766 (85%)	108 (12%)	27 (3%)	5	7

All (27) Ramachandran outliers are listed below:

Mol	Chain	Res	Type
1	A	22	LYS

Continued on next page...

*Continued from previous page...*

Mol	Chain	Res	Type
1	A	46	LYS
1	A	333	GLY
1	A	453	GLY
1	A	126	LYS
1	A	473	THR
2	B	14	PRO
2	B	103	LYS
2	B	171	PHE
2	B	214	LEU
1	A	112	GLY
2	B	49	LYS
1	A	85	GLN
1	A	94	ILE
1	A	451	LYS
2	B	237	ASP
2	B	68	SER
2	B	122	GLU
2	B	123	ASP
1	A	135	ILE
2	B	97	PRO
2	B	267	ALA
2	B	195	ILE
1	A	55	PRO
1	A	345	PRO
2	B	236	PRO
2	B	242	GLN

### 5.3.2 Protein sidechains ⓘ

In the following table, the Percentiles column shows the percent sidechain outliers of the chain as a percentile score with respect to all X-ray entries followed by that with respect to entries of similar resolution.

The Analysed column shows the number of residues for which the sidechain conformation was analysed, and the total number of residues.

Mol	Chain	Analysed	Rotameric	Outliers	Percentiles	
1	A	468/499 (94%)	421 (90%)	47 (10%)	9	18
2	B	361/400 (90%)	338 (94%)	23 (6%)	22	39
All	All	829/899 (92%)	759 (92%)	70 (8%)	14	25

All (70) residues with a non-rotameric sidechain are listed below:

Mol	Chain	Res	Type
1	A	8	VAL
1	A	12	LEU
1	A	56	TYR
1	A	71	TRP
1	A	77	PHE
1	A	78	ARG
1	A	83	ARG
1	A	89	GLU
1	A	91	GLN
1	A	94	ILE
1	A	105	SER
1	A	115	TYR
1	A	142	ILE
1	A	145	GLN
1	A	174	GLN
1	A	179	VAL
1	A	182	GLN
1	A	187	LEU
1	A	205	LEU
1	A	207	GLN
1	A	222	GLN
1	A	234	LEU
1	A	238	LYS
1	A	264	LEU
1	A	282	LEU
1	A	283	LEU
1	A	296	THR
1	A	297	GLU
1	A	303	LEU
1	A	305	GLU
1	A	351	THR
1	A	368	LEU
1	A	395	LYS
1	A	402	TRP
1	A	410	TRP
1	A	412	PRO
1	A	414	TRP
1	A	424	LYS
1	A	448	ARG
1	A	450	THR
1	A	451	LYS
1	A	452	LEU
1	A	454	LYS

*Continued on next page...*

*Continued from previous page...*

Mol	Chain	Res	Type
1	A	459	THR
1	A	479	LEU
1	A	484	LEU
1	A	493	VAL
2	B	65	LYS
2	B	66	LYS
2	B	100	LEU
2	B	113	ASP
2	B	122	GLU
2	B	123	ASP
2	B	145	GLN
2	B	161	GLN
2	B	203	GLU
2	B	212	TRP
2	B	214	LEU
2	B	233	GLU
2	B	234	LEU
2	B	295	LEU
2	B	303	LEU
2	B	350	LYS
2	B	356	ARG
2	B	363	ASN
2	B	368	LEU
2	B	410	TRP
2	B	414	TRP
2	B	425	LEU
2	B	427	TYR

Some sidechains can be flipped to improve hydrogen bonding and reduce clashes. All (28) such sidechains are listed below:

Mol	Chain	Res	Type
1	A	91	GLN
1	A	161	GLN
1	A	222	GLN
1	A	242	GLN
1	A	265	ASN
1	A	269	GLN
1	A	278	GLN
1	A	334	GLN
1	A	367	GLN
1	A	464	GLN
1	A	480	GLN

*Continued on next page...*



*Continued from previous page...*

Mol	Chain	Res	Type
1	A	487	GLN
1	A	507	GLN
1	A	509	GLN
1	A	512	GLN
1	A	524	GLN
2	B	57	ASN
2	B	85	GLN
2	B	147	ASN
2	B	151	GLN
2	B	161	GLN
2	B	182	GLN
2	B	208	HIS
2	B	242	GLN
2	B	278	GLN
2	B	332	GLN
2	B	334	GLN
2	B	363	ASN

### 5.3.3 RNA ⓘ

There are no RNA molecules in this entry.

## 5.4 Non-standard residues in protein, DNA, RNA chains ⓘ

1 non-standard protein/DNA/RNA residue is modelled in this entry.

In the following table, the Counts columns list the number of bonds (or angles) for which Mogul statistics could be retrieved, the number of bonds (or angles) that are observed in the model and the number of bonds (or angles) that are defined in the chemical component dictionary. The Link column lists molecule types, if any, to which the group is linked. The Z score for a bond length (or angle) is the number of standard deviations the observed value is removed from the expected value. A bond length (or angle) with  $|Z| > 2$  is considered an outlier worth inspection. RMSZ is the root-mean-square of all Z scores of the bond lengths (or angles).

Mol	Type	Chain	Res	Link	Bond lengths			Bond angles		
					Counts	RMSZ	$\# Z  > 2$	Counts	RMSZ	$\# Z  > 2$
1	CSD	A	280	1	3,7,8	0.92	0	3,8,10	4.45	2 (66%)

In the following table, the Chirals column lists the number of chiral outliers, the number of chiral centers analysed, the number of these observed in the model and the number defined in the chemical component dictionary. Similar counts are reported in the Torsion and Rings columns. '-' means no outliers of that kind were identified.

Mol	Type	Chain	Res	Link	Chirals	Torsions	Rings
1	CSD	A	280	1	-	1/2/6/8	0/0/0/0

There are no bond length outliers.

All (2) bond angle outliers are listed below:

Mol	Chain	Res	Type	Atoms	Z	Observed(°)	Ideal(°)
1	A	280	CSD	O-C-CA	-3.24	117.06	125.49
1	A	280	CSD	OD1-SG-CB	6.89	116.88	105.40

There are no chirality outliers.

All (1) torsion outliers are listed below:

Mol	Chain	Res	Type	Atoms
1	A	280	CSD	CA-CB-SG-OD1

There are no ring outliers.

No monomer is involved in short contacts.

## 5.5 Carbohydrates [i](#)

There are no carbohydrates in this entry.

## 5.6 Ligand geometry [i](#)

1 ligand is modelled in this entry.

In the following table, the Counts columns list the number of bonds (or angles) for which Mogul statistics could be retrieved, the number of bonds (or angles) that are observed in the model and the number of bonds (or angles) that are defined in the chemical component dictionary. The Link column lists molecule types, if any, to which the group is linked. The Z score for a bond length (or angle) is the number of standard deviations the observed value is removed from the expected value. A bond length (or angle) with  $|Z| > 2$  is considered an outlier worth inspection. RMSZ is the root-mean-square of all Z scores of the bond lengths (or angles).

Mol	Type	Chain	Res	Link	Bond lengths			Bond angles		
					Counts	RMSZ	$\# Z  > 2$	Counts	RMSZ	$\# Z  > 2$
3	S11	A	999	-	26,31,31	1.82	6 (23%)	32,43,43	1.27	4 (12%)

In the following table, the Chirals column lists the number of chiral outliers, the number of chiral centers analysed, the number of these observed in the model and the number defined in the chemical

component dictionary. Similar counts are reported in the Torsion and Rings columns. '-' means no outliers of that kind were identified.

Mol	Type	Chain	Res	Link	Chirals	Torsions	Rings
3	S11	A	999	-	-	0/13/17/17	0/3/3/3

All (6) bond length outliers are listed below:

Mol	Chain	Res	Type	Atoms	Z	Observed(Å)	Ideal(Å)
3	A	999	S11	C5-N1	-4.69	1.26	1.34
3	A	999	S11	C3-C2	-3.42	1.35	1.42
3	A	999	S11	C17-C16	2.05	1.43	1.38
3	A	999	S11	C11-C6	2.05	1.43	1.39
3	A	999	S11	C9-C8	2.21	1.42	1.38
3	A	999	S11	C11-C10	2.89	1.43	1.38

All (4) bond angle outliers are listed below:

Mol	Chain	Res	Type	Atoms	Z	Observed(°)	Ideal(°)
3	A	999	S11	C18-N19-C20	2.07	121.83	116.83
3	A	999	S11	C10-C9-C8	2.23	119.87	117.38
3	A	999	S11	C2-C3-N4	2.36	110.09	106.16
3	A	999	S11	C12-C2-N1	3.05	126.04	120.46

There are no chirality outliers.

There are no torsion outliers.

There are no ring outliers.

1 monomer is involved in 2 short contacts:

Mol	Chain	Res	Type	Clashes	Symm-Clashes
3	A	999	S11	2	0

## 5.7 Other polymers [i](#)

There are no such residues in this entry.

## 5.8 Polymer linkage issues [i](#)

There are no chain breaks in this entry.

## 6 Fit of model and data ⓘ

### 6.1 Protein, DNA and RNA chains ⓘ

In the following table, the column labelled ‘#RSRZ> 2’ contains the number (and percentage) of RSRZ outliers, followed by percent RSRZ outliers for the chain as percentile scores relative to all X-ray entries and entries of similar resolution. The OWAB column contains the minimum, median, 95<sup>th</sup> percentile and maximum values of the occupancy-weighted average B-factor per residue. The column labelled ‘Q< 0.9’ lists the number of (and percentage) of residues with an average occupancy less than 0.9.

Mol	Chain	Analysed	<RSRZ>	#RSRZ>2	OWAB(Å <sup>2</sup> )	Q<0.9
1	A	522/560 (93%)	0.45	53 (10%) 9 9	34, 67, 109, 132	0
2	B	395/440 (89%)	0.58	43 (10%) 7 7	31, 64, 114, 134	0
All	All	917/1000 (91%)	0.51	96 (10%) 8 8	31, 66, 112, 134	0

All (96) RSRZ outliers are listed below:

Mol	Chain	Res	Type	RSRZ
1	A	15	GLY	7.2
1	A	92	LEU	7.2
2	B	174	GLN	6.5
1	A	452	LEU	6.3
1	A	115	TYR	6.1
2	B	213	GLY	6.0
2	B	426	TRP	5.4
2	B	173	LYS	5.4
2	B	67	ASP	5.4
1	A	78	ARG	4.9
1	A	116	PHE	4.8
2	B	176	PRO	4.8
2	B	69	THR	4.7
1	A	346	PHE	4.5
1	A	453	GLY	4.4
1	A	51	GLY	4.3
1	A	71	TRP	4.3
1	A	21	VAL	4.3
1	A	221	HIS	4.2
1	A	91	GLN	4.2
2	B	11	LYS	4.2
2	B	12	LEU	4.1
2	B	233	GLU	4.1
1	A	90	VAL	4.0

*Continued on next page...*

*Continued from previous page...*

Mol	Chain	Res	Type	RSRZ
1	A	52	PRO	4.0
2	B	199	ARG	3.8
1	A	24	TRP	3.8
2	B	168	LEU	3.8
1	A	358	ARG	3.7
1	A	135	ILE	3.5
1	A	444	GLY	3.5
1	A	127	TYR	3.5
2	B	195	ILE	3.4
1	A	217	PRO	3.4
2	B	16	MET	3.4
2	B	14	PRO	3.4
1	A	214	LEU	3.3
2	B	232	TYR	3.3
2	B	88	TRP	3.3
2	B	167	ILE	3.3
1	A	469	LEU	3.3
2	B	423	VAL	3.3
1	A	16	MET	3.3
1	A	218	ASP	3.3
2	B	104	LYS	3.2
1	A	64	LYS	3.2
1	A	29	GLU	3.1
1	A	448	ARG	3.1
1	A	360	ALA	3.0
2	B	214	LEU	3.0
1	A	17	ASP	3.0
1	A	28	GLU	3.0
1	A	446	ALA	3.0
1	A	63	ILE	3.0
2	B	43	LYS	2.9
2	B	207	GLN	2.8
1	A	215	THR	2.8
1	A	402	TRP	2.8
2	B	68	SER	2.7
2	B	7	THR	2.6
1	A	14	PRO	2.6
1	A	501	TYR	2.6
2	B	356	ARG	2.5
2	B	97	PRO	2.5
1	A	445	ALA	2.5
2	B	5	ILE	2.5

*Continued on next page...*

*Continued from previous page...*

Mol	Chain	Res	Type	RSRZ
2	B	427	TYR	2.5
2	B	172	ARG	2.4
1	A	222	GLN	2.4
1	A	454	LYS	2.3
2	B	425	LEU	2.3
1	A	473	THR	2.3
2	B	198	HIS	2.3
2	B	122	GLU	2.2
2	B	102	LYS	2.2
1	A	93	GLY	2.2
1	A	112	GLY	2.2
2	B	211	ARG	2.2
1	A	197	GLN	2.2
2	B	355	ALA	2.2
1	A	50	ILE	2.1
1	A	82	LYS	2.1
1	A	359	GLY	2.1
1	A	477	THR	2.1
1	A	495	ILE	2.1
2	B	202	ILE	2.1
1	A	32	LYS	2.1
2	B	212	TRP	2.1
1	A	55	PRO	2.1
2	B	215	THR	2.1
2	B	424	LYS	2.1
2	B	44	GLU	2.0
2	B	329	ILE	2.0
1	A	31	ILE	2.0
2	B	334	GLN	2.0
1	A	470	THR	2.0

## 6.2 Non-standard residues in protein, DNA, RNA chains ⓘ

In the following table, the Atoms column lists the number of modelled atoms in the group and the number defined in the chemical component dictionary. LLDF column lists the quality of electron density of the group with respect to its neighbouring residues in protein, DNA or RNA chains. The B-factors column lists the minimum, median, 95<sup>th</sup> percentile and maximum values of B factors of atoms in the group. The column labelled 'Q< 0.9' lists the number of atoms with occupancy less than 0.9.

Mol	Type	Chain	Res	Atoms	RSCC	RSR	LLDF	B-factors(Å <sup>2</sup> )	Q<0.9
1	CSD	A	280	8/9	0.91	0.18	-	49,53,65,66	0

### 6.3 Carbohydrates [i](#)

There are no carbohydrates in this entry.

### 6.4 Ligands [i](#)

In the following table, the Atoms column lists the number of modelled atoms in the group and the number defined in the chemical component dictionary. LLDF column lists the quality of electron density of the group with respect to its neighbouring residues in protein, DNA or RNA chains. The B-factors column lists the minimum, median, 95<sup>th</sup> percentile and maximum values of B factors of atoms in the group. The column labelled 'Q< 0.9' lists the number of atoms with occupancy less than 0.9.

Mol	Type	Chain	Res	Atoms	RSCC	RSR	LLDF	B-factors( $\text{\AA}^2$ )	Q<0.9
3	S11	A	999	29/29	0.95	0.19	0.77	42,50,60,69	0

### 6.5 Other polymers [i](#)

There are no such residues in this entry.