



# wwPDB X-ray Structure Validation Summary Report ⓘ

May 12, 2016 – 04:35 AM EDT

PDB ID : 5ERL  
Title : Crystal structure of the epimerase SnoN in complex with Ni<sup>2+</sup>, succinate and nogalamycin RO  
Authors : Selvaraj, B.; Lindqvist, Y.; Siitonen, V.; Metsa-Ketela, M.; Schneider, G.  
Deposited on : 2015-11-14  
Resolution : 2.85 Å(reported)

This is a wwPDB X-ray Structure Validation Summary Report for a publicly released PDB entry.  
We welcome your comments at [validation@mail.wwpdb.org](mailto:validation@mail.wwpdb.org)  
A user guide is available at  
<http://wwpdb.org/validation/2016/XrayValidationReportHelp>  
with specific help available everywhere you see the ⓘ symbol.

---

The following versions of software and data (see [references ⓘ](#)) were used in the production of this report:

MolProbity : 4.02b-467  
Mogul : 1.7.1 (RC1), CSD as537be (2016)  
Xtriage (Phenix) : 1.9-1692  
EDS : rb-20027457  
Percentile statistics : 20151230.v01 (using entries in the PDB archive December 30th 2015)  
Refmac : 5.8.0135  
CCP4 : 6.5.0  
Ideal geometry (proteins) : Engh & Huber (2001)  
Ideal geometry (DNA, RNA) : Parkinson et al. (1996)  
Validation Pipeline (wwPDB-VP) : rb-20027457

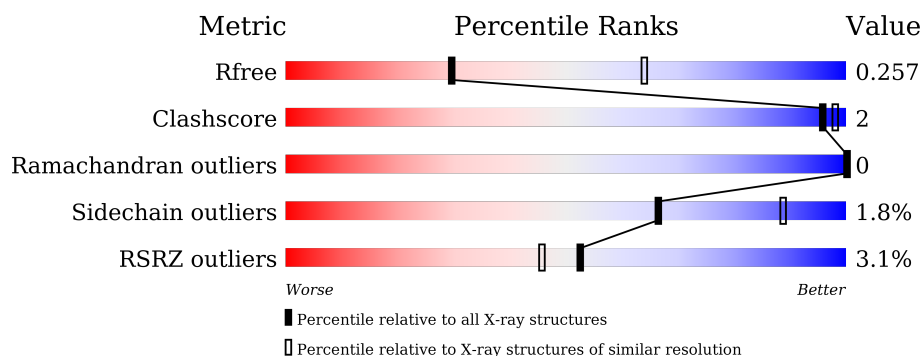
# 1 Overall quality at a glance

The following experimental techniques were used to determine the structure:

## *X-RAY DIFFRACTION*

The reported resolution of this entry is 2.85 Å.

Percentile scores (ranging between 0-100) for global validation metrics of the entry are shown in the following graphic. The table shows the number of entries on which the scores are based.



Metric	Whole archive (#Entries)	Similar resolution (#Entries, resolution range(Å))
$R_{free}$	91344	2228 (2.90-2.82)
Clashscore	102246	2499 (2.90-2.82)
Ramachandran outliers	100387	2439 (2.90-2.82)
Sidechain outliers	100360	2442 (2.90-2.82)
RSRZ outliers	91569	2236 (2.90-2.82)

The table below summarises the geometric issues observed across the polymeric chains and their fit to the electron density. The red, orange, yellow and green segments on the lower bar indicate the fraction of residues that contain outliers for  $\geq 3$ , 2, 1 and 0 types of geometric quality criteria. A grey segment represents the fraction of residues that are not modelled. The numeric value for each fraction is indicated below the corresponding segment, with a dot representing fractions  $\leq 5\%$ . The upper red bar (where present) indicates the fraction of residues that have poor fit to the electron density. The numeric value is given above the bar.

Mol	Chain	Length	Quality of chain
1	A	305	<div> <div>77%</div> <div>7% • 16%</div> </div>
1	B	305	<div> <div>%</div> <div>80% • 16%</div> </div>
1	C	305	<div> <div>3%</div> <div>79% 5% 16%</div> </div>
1	D	305	<div> <div>6%</div> <div>81% • 15%</div> </div>

The following table lists non-polymeric compounds, carbohydrate monomers and non-standard residues in protein, DNA, RNA chains that are outliers for geometric or electron-density-fit crite-

ria:

Mol	Type	Chain	Res	Chirality	Geometry	Clashes	Electron density
3	SIN	C	301	-	-	-	X
4	5R6	C	302	-	-	-	X

## 2 Entry composition [i](#)

There are 5 unique types of molecules in this entry. The entry contains 8080 atoms, of which 0 are hydrogens and 0 are deuteriums.

In the tables below, the ZeroOcc column contains the number of atoms modelled with zero occupancy, the AltConf column contains the number of residues with at least one atom in alternate conformation and the Trace column contains the number of residues modelled with at most 2 atoms.

- Molecule 1 is a protein called SnoN,SnoN.

Mol	Chain	Residues	Atoms					ZeroOcc	AltConf	Trace
1	A	257	Total	C	N	O	S	0	0	0
			1957	1233	352	365	7			
1	B	256	Total	C	N	O	S	0	1	0
			1949	1229	348	365	7			
1	C	257	Total	C	N	O	S	0	1	0
			1960	1235	352	366	7			
1	D	258	Total	C	N	O	S	0	0	0
			1963	1236	353	367	7			

There are 52 discrepancies between the modelled and reference sequences:

Chain	Residue	Modelled	Actual	Comment	Reference
A	-11	MET	-	initiating methionine	UNP Q9RN67
A	-10	ALA	-	expression tag	UNP Q9RN67
A	-9	HIS	-	expression tag	UNP Q9RN67
A	-8	HIS	-	expression tag	UNP Q9RN67
A	-7	HIS	-	expression tag	UNP Q9RN67
A	-6	HIS	-	expression tag	UNP Q9RN67
A	-5	HIS	-	expression tag	UNP Q9RN67
A	-4	HIS	-	expression tag	UNP Q9RN67
A	-3	HIS	-	expression tag	UNP Q9RN67
A	-2	ARG	-	expression tag	UNP Q9RN67
A	-1	SER	-	expression tag	UNP Q9RN67
A	0	ALA	-	expression tag	UNP Q9RN67
A	1	ASP	-	expression tag	UNP Q9RN67
B	-11	MET	-	initiating methionine	UNP Q9RN67
B	-10	ALA	-	expression tag	UNP Q9RN67
B	-9	HIS	-	expression tag	UNP Q9RN67
B	-8	HIS	-	expression tag	UNP Q9RN67
B	-7	HIS	-	expression tag	UNP Q9RN67
B	-6	HIS	-	expression tag	UNP Q9RN67
B	-5	HIS	-	expression tag	UNP Q9RN67
B	-4	HIS	-	expression tag	UNP Q9RN67

*Continued on next page...*

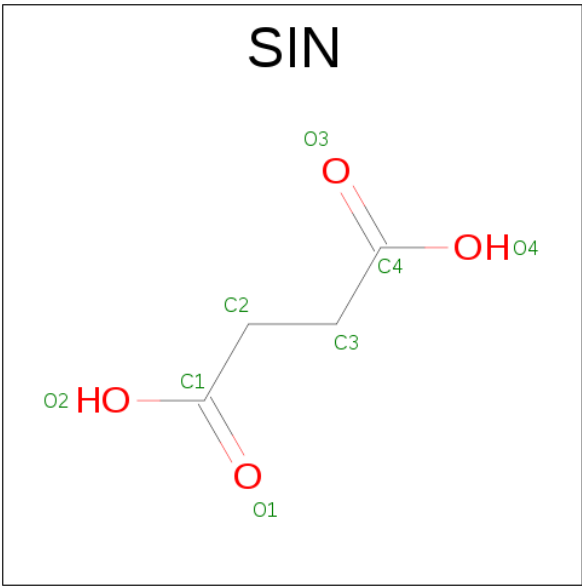
*Continued from previous page...*

Chain	Residue	Modelled	Actual	Comment	Reference
B	-3	HIS	-	expression tag	UNP Q9RN67
B	-2	ARG	-	expression tag	UNP Q9RN67
B	-1	SER	-	expression tag	UNP Q9RN67
B	0	ALA	-	expression tag	UNP Q9RN67
B	1	ASP	-	expression tag	UNP Q9RN67
C	-11	MET	-	initiating methionine	UNP Q9RN67
C	-10	ALA	-	expression tag	UNP Q9RN67
C	-9	HIS	-	expression tag	UNP Q9RN67
C	-8	HIS	-	expression tag	UNP Q9RN67
C	-7	HIS	-	expression tag	UNP Q9RN67
C	-6	HIS	-	expression tag	UNP Q9RN67
C	-5	HIS	-	expression tag	UNP Q9RN67
C	-4	HIS	-	expression tag	UNP Q9RN67
C	-3	HIS	-	expression tag	UNP Q9RN67
C	-2	ARG	-	expression tag	UNP Q9RN67
C	-1	SER	-	expression tag	UNP Q9RN67
C	0	ALA	-	expression tag	UNP Q9RN67
C	1	ASP	-	expression tag	UNP Q9RN67
D	-11	MET	-	initiating methionine	UNP Q9RN67
D	-10	ALA	-	expression tag	UNP Q9RN67
D	-9	HIS	-	expression tag	UNP Q9RN67
D	-8	HIS	-	expression tag	UNP Q9RN67
D	-7	HIS	-	expression tag	UNP Q9RN67
D	-6	HIS	-	expression tag	UNP Q9RN67
D	-5	HIS	-	expression tag	UNP Q9RN67
D	-4	HIS	-	expression tag	UNP Q9RN67
D	-3	HIS	-	expression tag	UNP Q9RN67
D	-2	ARG	-	expression tag	UNP Q9RN67
D	-1	SER	-	expression tag	UNP Q9RN67
D	0	ALA	-	expression tag	UNP Q9RN67
D	1	ASP	-	expression tag	UNP Q9RN67

- Molecule 2 is NICKEL (II) ION (three-letter code: NI) (formula: Ni).

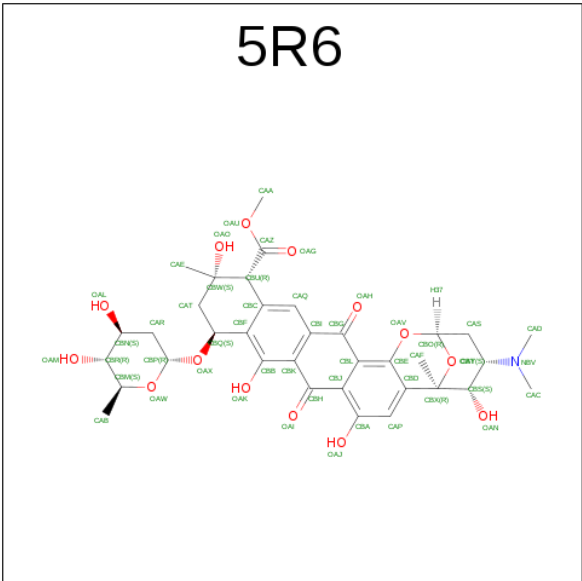
Mol	Chain	Residues	Atoms	ZeroOcc	AltConf
2	B	1	Total Ni 1 1	0	0
2	A	1	Total Ni 1 1	0	0
2	D	1	Total Ni 1 1	0	0
2	C	1	Total Ni 1 1	0	0

- Molecule 3 is SUCCINIC ACID (three-letter code: SIN) (formula: C<sub>4</sub>H<sub>6</sub>O<sub>4</sub>).



Mol	Chain	Residues	Atoms			ZeroOcc	AltConf
3	A	1	Total	C	O	0	0
			8	4	4		
3	B	1	Total	C	O	0	0
			8	4	4		
3	C	1	Total	C	O	0	0
			8	4	4		
3	D	1	Total	C	O	0	0
			8	4	4		

- Molecule 4 is Nogalamycin RO (three-letter code: 5R6) (formula: C<sub>35</sub>H<sub>41</sub>NO<sub>14</sub>).



Mol	Chain	Residues	Atoms				ZeroOcc	AltConf
4	A	1	Total	C	N	O	0	0
			50	35	1	14		
4	B	1	Total	C	N	O	0	0
			50	35	1	14		
4	C	1	Total	C	N	O	0	0
			50	35	1	14		
4	D	1	Total	C	N	O	0	0
			50	35	1	14		

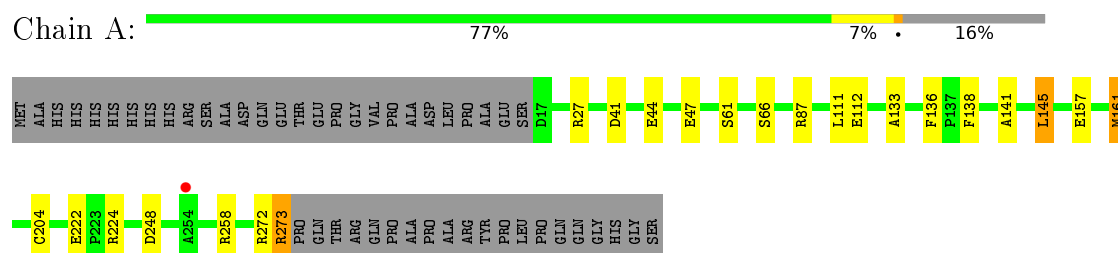
- Molecule 5 is water.

Mol	Chain	Residues	Atoms		ZeroOcc	AltConf
5	A	8	Total	O	0	0
			8	8		
5	B	2	Total	O	0	0
			2	2		
5	C	1	Total	O	0	0
			1	1		
5	D	4	Total	O	0	0
			4	4		

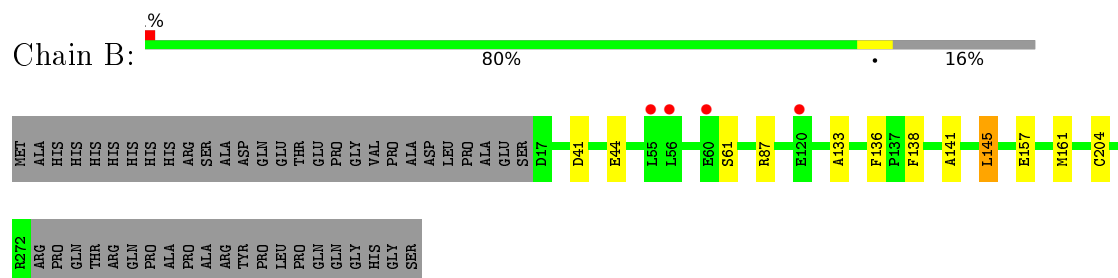
### 3 Residue-property plots

These plots are drawn for all protein, RNA and DNA chains in the entry. The first graphic for a chain summarises the proportions of errors displayed in the second graphic. The second graphic shows the sequence view annotated by issues in geometry and electron density. Residues are color-coded according to the number of geometric quality criteria for which they contain at least one outlier: green = 0, yellow = 1, orange = 2 and red = 3 or more. A red dot above a residue indicates a poor fit to the electron density ( $\text{RSRZ} > 2$ ). Stretches of 2 or more consecutive residues without any outlier are shown as a green connector. Residues present in the sample, but not in the model, are shown in grey.

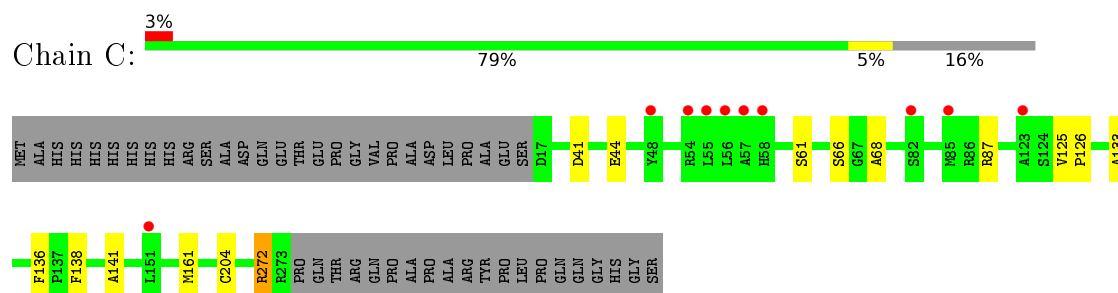
#### • Molecule 1: SnoN,SnoN



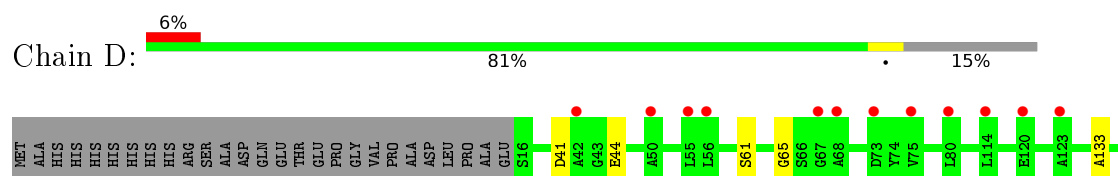
#### • Molecule 1: SnoN,SnoN



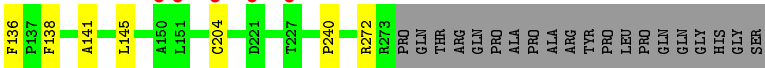
#### • Molecule 1: SnoN,SnoN



#### • Molecule 1: SnoN,SnoN







## 4 Data and refinement statistics

Property	Value	Source
Space group	P 21 21 21	Depositor
Cell constants a, b, c, $\alpha$ , $\beta$ , $\gamma$	71.32Å 117.78Å 160.96Å 90.00° 90.00° 90.00°	Depositor
Resolution (Å)	48.80 – 2.85 48.62 – 2.85	Depositor EDS
% Data completeness (in resolution range)	99.2 (48.80-2.85) 99.2 (48.62-2.85)	Depositor EDS
$R_{merge}$	0.09	Depositor
$R_{sym}$	(Not available)	Depositor
$\langle I/\sigma(I) \rangle$ <sup>1</sup>	2.00 (at 2.86Å)	Xtriage
Refinement program	REFMAC 5.8.0135	Depositor
R, $R_{free}$	0.200 , 0.224 0.235 , 0.257	Depositor DCC
$R_{free}$ test set	1628 reflections (5.33%)	DCC
Wilson B-factor (Å <sup>2</sup> )	68.4	Xtriage
Anisotropy	0.636	Xtriage
Bulk solvent $k_{sol}$ (e/Å <sup>3</sup> ), $B_{sol}$ (Å <sup>2</sup> )	0.29 , 57.0	EDS
L-test for twinning <sup>2</sup>	$\langle  L  \rangle = 0.48$ , $\langle L^2 \rangle = 0.31$	Xtriage
Estimated twinning fraction	No twinning to report.	Xtriage
$F_o, F_c$ correlation	0.93	EDS
Total number of atoms	8080	wwPDB-VP
Average B, all atoms (Å <sup>2</sup> )	87.0	wwPDB-VP

Xtriage's analysis on translational NCS is as follows: *The largest off-origin peak in the Patterson function is 4.28% of the height of the origin peak. No significant pseudotranslation is detected.*

<sup>1</sup>Intensities estimated from amplitudes.

<sup>2</sup>Theoretical values of  $\langle |L| \rangle$ ,  $\langle L^2 \rangle$  for acentric reflections are 0.5, 0.375 respectively for untwinned datasets, and 0.333, 0.2 for perfectly twinned datasets.

## 5 Model quality ⓘ

### 5.1 Standard geometry ⓘ

Bond lengths and bond angles in the following residue types are not validated in this section: NI, 5R6, SIN

The Z score for a bond length (or angle) is the number of standard deviations the observed value is removed from the expected value. A bond length (or angle) with  $|Z| > 5$  is considered an outlier worth inspection. RMSZ is the root-mean-square of all Z scores of the bond lengths (or angles).

Mol	Chain	Bond lengths		Bond angles	
		RMSZ	# $ Z  > 5$	RMSZ	# $ Z  > 5$
1	A	1.09	5/2010 (0.2%)	1.06	8/2746 (0.3%)
1	B	0.86	1/2005 (0.0%)	0.95	2/2740 (0.1%)
1	C	0.83	0/2016	0.95	3/2754 (0.1%)
1	D	0.81	0/2016	0.96	1/2754 (0.0%)
All	All	0.90	6/8047 (0.1%)	0.98	14/10994 (0.1%)

Chiral center outliers are detected by calculating the chiral volume of a chiral center and verifying if the center is modelled as a planar moiety or with the opposite hand. A planarity outlier is detected by checking planarity of atoms in a peptide group, atoms in a mainchain group or atoms of a sidechain that are expected to be planar.

Mol	Chain	#Chirality outliers	#Planarity outliers
1	D	0	1

The worst 5 of 6 bond length outliers are listed below:

Mol	Chain	Res	Type	Atoms	Z	Observed(Å)	Ideal(Å)
1	A	222	GLU	CD-OE1	7.95	1.34	1.25
1	A	222	GLU	CD-OE2	7.83	1.34	1.25
1	B	157	GLU	CD-OE2	7.05	1.33	1.25
1	A	157	GLU	CD-OE2	6.30	1.32	1.25
1	A	248	ASP	CB-CG	5.44	1.63	1.51

The worst 5 of 14 bond angle outliers are listed below:

Mol	Chain	Res	Type	Atoms	Z	Observed(°)	Ideal(°)
1	A	87	ARG	NE-CZ-NH2	-8.30	116.15	120.30
1	A	27	ARG	NE-CZ-NH1	7.08	123.84	120.30
1	D	272	ARG	NE-CZ-NH2	6.33	123.47	120.30
1	A	258	ARG	NE-CZ-NH1	-6.25	117.18	120.30

*Continued on next page...*

*Continued from previous page...*

Mol	Chain	Res	Type	Atoms	Z	Observed(°)	Ideal(°)
1	A	224	ARG	NE-CZ-NH1	6.17	123.39	120.30

There are no chirality outliers.

All (1) planarity outliers are listed below:

Mol	Chain	Res	Type	Group
1	D	65	GLY	Peptide

## 5.2 Too-close contacts [i](#)

In the following table, the Non-H and H(model) columns list the number of non-hydrogen atoms and hydrogen atoms in the chain respectively. The H(added) column lists the number of hydrogen atoms added and optimized by MolProbity. The Clashes column lists the number of clashes within the asymmetric unit, whereas Symm-Clashes lists symmetry related clashes.

Mol	Chain	Non-H	H(model)	H(added)	Clashes	Symm-Clashes
1	A	1957	0	1905	6	0
1	B	1949	0	1897	4	0
1	C	1960	0	1910	6	0
1	D	1963	0	1910	3	0
2	A	1	0	0	0	0
2	B	1	0	0	0	0
2	C	1	0	0	0	0
2	D	1	0	0	0	0
3	A	8	0	4	1	0
3	B	8	0	4	0	0
3	C	8	0	4	0	0
3	D	8	0	4	0	0
4	A	50	0	0	1	0
4	B	50	0	0	3	0
4	C	50	0	0	0	0
4	D	50	0	0	1	0
5	A	8	0	0	0	0
5	B	2	0	0	0	0
5	C	1	0	0	0	0
5	D	4	0	0	0	0
All	All	8080	0	7638	24	0

The all-atom clashscore is defined as the number of clashes found per 1000 atoms (including hydrogen atoms). The all-atom clashscore for this structure is 2.

The worst 5 of 24 close contacts within the same asymmetric unit are listed below, sorted by their

clash magnitude.

Atom-1	Atom-2	Interatomic distance (Å)	Clash overlap (Å)
1:A:136:PHE:HB3	1:A:138:PHE:CE2	2.39	0.57
4:A:302:5R6:OAK	4:A:302:5R6:OAI	2.21	0.54
1:A:41:ASP:OD1	1:A:44:GLU:HG3	2.10	0.51
1:D:136:PHE:HB3	1:D:138:PHE:CE2	2.45	0.51
1:C:133:ALA:O	1:C:141:ALA:HB1	2.10	0.51

There are no symmetry-related clashes.

## 5.3 Torsion angles [i](#)

### 5.3.1 Protein backbone [i](#)

In the following table, the Percentiles column shows the percent Ramachandran outliers of the chain as a percentile score with respect to all X-ray entries followed by that with respect to entries of similar resolution.

The Analysed column shows the number of residues for which the backbone conformation was analysed, and the total number of residues.

Mol	Chain	Analysed	Favoured	Allowed	Outliers	Percentiles	
1	A	255/305 (84%)	249 (98%)	6 (2%)	0	100	100
1	B	255/305 (84%)	251 (98%)	4 (2%)	0	100	100
1	C	256/305 (84%)	252 (98%)	4 (2%)	0	100	100
1	D	256/305 (84%)	252 (98%)	4 (2%)	0	100	100
All	All	1022/1220 (84%)	1004 (98%)	18 (2%)	0	100	100

There are no Ramachandran outliers to report.

### 5.3.2 Protein sidechains [i](#)

In the following table, the Percentiles column shows the percent sidechain outliers of the chain as a percentile score with respect to all X-ray entries followed by that with respect to entries of similar resolution.

The Analysed column shows the number of residues for which the sidechain conformation was analysed, and the total number of residues.

Mol	Chain	Analysed	Rotameric	Outliers	Percentiles	
1	A	198/237 (84%)	193 (98%)	5 (2%)	55	84
1	B	198/237 (84%)	195 (98%)	3 (2%)	72	91
1	C	199/237 (84%)	197 (99%)	2 (1%)	82	94
1	D	199/237 (84%)	195 (98%)	4 (2%)	63	87
All	All	794/948 (84%)	780 (98%)	14 (2%)	66	89

5 of 14 residues with a non-rotameric sidechain are listed below:

Mol	Chain	Res	Type
1	B	145	LEU
1	B	204	CYS
1	D	145	LEU
1	B	61	SER
1	D	61	SER

Some sidechains can be flipped to improve hydrogen bonding and reduce clashes. There are no such sidechains identified.

### 5.3.3 RNA ⓘ

There are no RNA molecules in this entry.

## 5.4 Non-standard residues in protein, DNA, RNA chains ⓘ

There are no non-standard protein/DNA/RNA residues in this entry.

## 5.5 Carbohydrates ⓘ

There are no carbohydrates in this entry.

## 5.6 Ligand geometry ⓘ

Of 12 ligands modelled in this entry, 4 are monoatomic - leaving 8 for Mogul analysis.

In the following table, the Counts columns list the number of bonds (or angles) for which Mogul statistics could be retrieved, the number of bonds (or angles) that are observed in the model and the number of bonds (or angles) that are defined in the chemical component dictionary. The Link column lists molecule types, if any, to which the group is linked. The Z score for a bond length (or angle) is the number of standard deviations the observed value is removed from the expected

value. A bond length (or angle) with  $|Z| > 2$  is considered an outlier worth inspection. RMSZ is the root-mean-square of all Z scores of the bond lengths (or angles).

Mol	Type	Chain	Res	Link	Bond lengths			Bond angles		
					Counts	RMSZ	$\# Z  > 2$	Counts	RMSZ	$\# Z  > 2$
3	SIN	A	301	2	1,7,7	1.32	0	2,8,8	0.15	0
4	5R6	A	302	-	50,56,56	3.33	22 (44%)	67,91,91	2.32	22 (32%)
3	SIN	B	301	2	1,7,7	0.31	0	2,8,8	1.17	0
4	5R6	B	302	-	50,56,56	2.41	15 (30%)	67,91,91	1.73	14 (20%)
3	SIN	C	301	2	1,7,7	0.79	0	2,8,8	2.48	2 (100%)
4	5R6	C	302	-	50,56,56	1.97	16 (32%)	67,91,91	1.46	12 (17%)
3	SIN	D	301	2	1,7,7	0.35	0	2,8,8	1.24	0
4	5R6	D	302	-	50,56,56	2.18	17 (34%)	67,91,91	1.42	10 (14%)

In the following table, the Chirals column lists the number of chiral outliers, the number of chiral centers analysed, the number of these observed in the model and the number defined in the chemical component dictionary. Similar counts are reported in the Torsion and Rings columns. '-' means no outliers of that kind were identified.

Mol	Type	Chain	Res	Link	Chirals	Torsions	Rings
3	SIN	A	301	2	-	0/1/5/5	0/0/0/0
4	5R6	A	302	-	-	0/14/94/94	0/1/7/7
3	SIN	B	301	2	-	0/1/5/5	0/0/0/0
4	5R6	B	302	-	-	0/14/94/94	0/1/7/7
3	SIN	C	301	2	-	0/1/5/5	0/0/0/0
4	5R6	C	302	-	-	0/14/94/94	0/1/7/7
3	SIN	D	301	2	-	0/1/5/5	0/0/0/0
4	5R6	D	302	-	-	0/14/94/94	0/1/7/7

The worst 5 of 70 bond length outliers are listed below:

Mol	Chain	Res	Type	Atoms	Z	Observed(Å)	Ideal(Å)
4	B	302	5R6	CBF-CBQ	-5.93	1.39	1.51
4	A	302	5R6	OAO-CBW	-5.49	1.34	1.44
4	A	302	5R6	CAS-CBO	-5.38	1.39	1.51
4	D	302	5R6	CBF-CBQ	-5.36	1.41	1.51
4	A	302	5R6	CBF-CBQ	-5.20	1.41	1.51

The worst 5 of 60 bond angle outliers are listed below:

Mol	Chain	Res	Type	Atoms	Z	Observed(°)	Ideal(°)
4	A	302	5R6	OAY-CBO-CAS	-6.98	100.03	110.91
4	A	302	5R6	CAR-CBN-CBR	-5.67	102.96	110.54

*Continued on next page...*

*Continued from previous page...*

Mol	Chain	Res	Type	Atoms	Z	Observed(°)	Ideal(°)
4	A	302	5R6	OAK-CBB-CBK	-4.01	112.07	120.99
4	A	302	5R6	CAQ-CBC-CBF	-3.79	114.36	119.27
4	A	302	5R6	OAO-CBW-CAT	-3.57	99.32	107.99

There are no chirality outliers.

There are no torsion outliers.

There are no ring outliers.

4 monomers are involved in 6 short contacts:

Mol	Chain	Res	Type	Clashes	Symm-Clashes
3	A	301	SIN	1	0
4	A	302	5R6	1	0
4	B	302	5R6	3	0
4	D	302	5R6	1	0

## 5.7 Other polymers [i](#)

There are no such residues in this entry.

## 5.8 Polymer linkage issues [i](#)

There are no chain breaks in this entry.



## 6 Fit of model and data [i](#)

### 6.1 Protein, DNA and RNA chains [i](#)

In the following table, the column labelled ‘#RSRZ> 2’ contains the number (and percentage) of RSRZ outliers, followed by percent RSRZ outliers for the chain as percentile scores relative to all X-ray entries and entries of similar resolution. The OWAB column contains the minimum, median, 95<sup>th</sup> percentile and maximum values of the occupancy-weighted average B-factor per residue. The column labelled ‘Q< 0.9’ lists the number of (and percentage) of residues with an average occupancy less than 0.9.

Mol	Chain	Analysed	<RSRZ>	#RSRZ>2	OWAB(Å <sup>2</sup> )	Q<0.9
1	A	257/305 (84%)	-0.11	1 (0%) 93 92	41, 59, 99, 121	0
1	B	256/305 (83%)	0.19	4 (1%) 74 72	52, 88, 128, 153	0
1	C	257/305 (84%)	0.30	10 (3%) 43 36	60, 90, 136, 170	0
1	D	258/305 (84%)	0.54	17 (6%) 22 16	60, 105, 159, 206	0
All	All	1028/1220 (84%)	0.23	32 (3%) 52 46	41, 84, 144, 206	0

The worst 5 of 32 RSRZ outliers are listed below:

Mol	Chain	Res	Type	RSRZ
1	D	67	GLY	4.8
1	C	123	ALA	4.0
1	C	56	LEU	3.7
1	C	55	LEU	3.6
1	C	85	MET	3.5

### 6.2 Non-standard residues in protein, DNA, RNA chains [i](#)

There are no non-standard protein/DNA/RNA residues in this entry.

### 6.3 Carbohydrates [i](#)

There are no carbohydrates in this entry.

### 6.4 Ligands [i](#)

In the following table, the Atoms column lists the number of modelled atoms in the group and the number defined in the chemical component dictionary. LLDF column lists the quality of electron density of the group with respect to its neighbouring residues in protein, DNA or RNA chains. The B-factors column lists the minimum, median, 95<sup>th</sup> percentile and maximum values of B factors

of atoms in the group. The column labelled 'Q< 0.9' lists the number of atoms with occupancy less than 0.9.

Mol	Type	Chain	Res	Atoms	RSCC	RSR	LLDF	B-factors( $\text{\AA}^2$ )	Q<0.9
3	SIN	C	301	8/8	0.87	0.28	2.63	11,13,13,14	0
4	5R6	C	302	50/50	0.85	0.33	2.46	20,33,62,63	0
4	5R6	B	302	50/50	0.88	0.27	1.11	18,26,41,44	0
4	5R6	D	302	50/50	0.82	0.36	1.01	22,25,31,31	0
3	SIN	D	301	8/8	0.81	0.29	0.94	11,12,13,14	0
3	SIN	B	301	8/8	0.93	0.20	0.43	12,13,13,14	0
4	5R6	A	302	50/50	0.93	0.16	-0.68	8,12,33,34	0
3	SIN	A	301	8/8	0.96	0.16	-0.88	11,13,14,14	0
2	NI	A	300	1/1	0.97	0.04	-	12,12,12,12	0
2	NI	B	300	1/1	0.94	0.07	-	18,18,18,18	0
2	NI	D	300	1/1	0.85	0.11	-	17,17,17,17	0
2	NI	C	300	1/1	0.95	0.09	-	16,16,16,16	0

## 6.5 Other polymers [i](#)

There are no such residues in this entry.