



Full wwPDB X-ray Structure Validation Report ⓘ

Jan 31, 2016 – 07:15 PM GMT

PDB ID : 1ETR
Title : REFINED 2.3 ANGSTROMS X-RAY CRYSTAL STRUCTURE OF BOVINE THROMBIN COMPLEXES FORMED WITH THE BENZAMIDINE AND ARGININE-BASED THROMBIN INHIBITORS NAPAP, 4-TAPAP AND MQPA: A STARTING POINT FOR IMPROVING ANTITHROMBOTICS
Authors : Bode, W.; Brandstetter, H.
Deposited on : 1992-07-06
Resolution : 2.20 Å(reported)

This is a Full wwPDB X-ray Structure Validation Report for a publicly released PDB entry.
We welcome your comments at validation@mail.wwpdb.org
A user guide is available at
<http://wwpdb.org/validation/2016/XrayValidationReportHelp>
with specific help available everywhere you see the ⓘ symbol.

The following versions of software and data (see [references ⓘ](#)) were used in the production of this report:

MolProbity : 4.02b-467
Mogul : 1.7 (RC4), CSD as536be (2015)
Xtriage (Phenix) : **NOT EXECUTED**
EDS : **NOT EXECUTED**
Percentile statistics : 20151230.v01 (using entries in the PDB archive December 30th 2015)
Ideal geometry (proteins) : Engh & Huber (2001)
Ideal geometry (DNA, RNA) : Parkinson et al. (1996)
Validation Pipeline (wwPDB-VP) : trunk26865

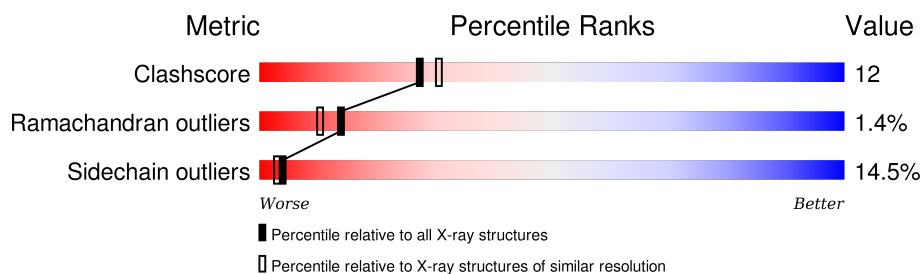
1 Overall quality at a glance

The following experimental techniques were used to determine the structure:

X-RAY DIFFRACTION

The reported resolution of this entry is 2.20 Å.

Percentile scores (ranging between 0-100) for global validation metrics of the entry are shown in the following graphic. The table shows the number of entries on which the scores are based.



Metric	Whole archive (#Entries)	Similar resolution (#Entries, resolution range(Å))
Clashscore	102246	4477 (2.20-2.20)
Ramachandran outliers	100387	4404 (2.20-2.20)
Sidechain outliers	100360	4405 (2.20-2.20)

The table below summarises the geometric issues observed across the polymeric chains and their fit to the electron density. The red, orange, yellow and green segments on the lower bar indicate the fraction of residues that contain outliers for ≥ 3 , 2, 1 and 0 types of geometric quality criteria. A grey segment represents the fraction of residues that are not modelled. The numeric value for each fraction is indicated below the corresponding segment, with a dot representing fractions $\leq 5\%$. The upper red bar (where present) indicates the fraction of residues that have poor fit to the electron density. The numeric value is given above the bar.

Note EDS was not executed.

Mol	Chain	Length	Quality of chain
1	L	49	
2	H	259	

2 Entry composition [i](#)

There are 4 unique types of molecules in this entry. The entry contains 3435 atoms, of which 864 are hydrogens and 0 are deuteriums.

In the tables below, the ZeroOcc column contains the number of atoms modelled with zero occupancy, the AltConf column contains the number of residues with at least one atom in alternate conformation and the Trace column contains the number of residues modelled with at most 2 atoms.

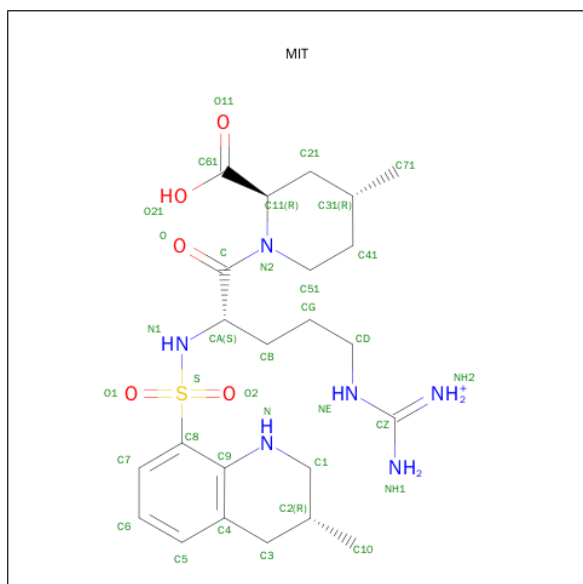
- Molecule 1 is a protein called EPSILON-THROMBIN.

Mol	Chain	Residues	Atoms						ZeroOcc	AltConf	Trace
1	L	36	Total	C	H	N	O	S	141	0	0
			353	181	63	48	60	1			

- Molecule 2 is a protein called EPSILON-THROMBIN.

Mol	Chain	Residues	Atoms						ZeroOcc	AltConf	Trace
2	H	259	Total	C	H	N	O	S	647	0	0
			2584	1337	490	376	369	12			

- Molecule 3 is AMINO{[(4S)-5-[(2R,4R)-2-CARBOXY-4-METHYLPYPERIDIN-1-YL]-4-({[(3R)-3-METHYL-1,2,3,4-TETRAHYDROQUINOLIN-8-YL]SULFONYL}AMINO)-5-OXOPENTYL]AMINO}METHANIMINIUM (three-letter code: MIT) (formula: C₂₃H₃₇N₆O₅S).



Mol	Chain	Residues	Atoms						ZeroOcc	AltConf
3	H	1	Total	C	H	N	O	S	3	0
			42	23	7	6	5	1		

- Molecule 4 is water.

Mol	Chain	Residues	Atoms			ZeroOcc	AltConf
4	L	17	Total 51	H 34	O 17	34	0
4	H	135	Total 405	H 270	O 135	270	0

3 Residue-property plots [i](#)

These plots are drawn for all protein, RNA and DNA chains in the entry. The first graphic for a chain summarises the proportions of errors displayed in the second graphic. The second graphic shows the sequence view annotated by issues in geometry and electron density. Residues are color-coded according to the number of geometric quality criteria for which they contain at least one outlier: green = 0, yellow = 1, orange = 2 and red = 3 or more. A red dot above a residue indicates a poor fit to the electron density ($RSRZ > 2$). Stretches of 2 or more consecutive residues without any outlier are shown as a green connector. Residues present in the sample, but not in the model, are shown in grey.

Note EDS was not executed.

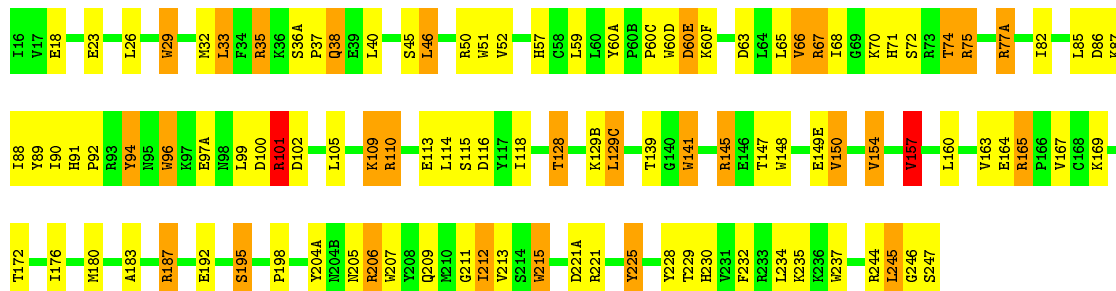
• Molecule 1: EPSILON-THROMBIN

Chain L: 



• Molecule 2: EPSILON-THROMBIN

Chain H: 



4 Data and refinement statistics

Xtriage (Phenix) and EDS were not executed - this section will therefore be incomplete.

Property	Value	Source
Space group	P 42 21 2	Depositor
Cell constants a, b, c, α , β , γ	87.71Å 87.71Å 102.98Å 90.00° 90.00° 90.00°	Depositor
Resolution (Å)	8.00 – 2.20	Depositor
% Data completeness (in resolution range)	(Not available) (8.00-2.20)	Depositor
R_{merge}	(Not available)	Depositor
R_{sym}	(Not available)	Depositor
Refinement program	X-PLOR	Depositor
R, R_{free}	0.175 , (Not available)	Depositor
Estimated twinning fraction	No twinning to report.	Xtriage
Total number of atoms	3435	wwPDB-VP
Average B, all atoms (Å ²)	27.0	wwPDB-VP

5 Model quality

5.1 Standard geometry

Bond lengths and bond angles in the following residue types are not validated in this section: MIT

The Z score for a bond length (or angle) is the number of standard deviations the observed value is removed from the expected value. A bond length (or angle) with $|Z| > 5$ is considered an outlier worth inspection. RMSZ is the root-mean-square of all Z scores of the bond lengths (or angles).

Mol	Chain	Bond lengths		Bond angles	
		RMSZ	$\# Z > 5$	RMSZ	$\# Z > 5$
1	L	0.75	0/294	1.40	0/390
2	H	0.90	0/2148	1.74	53/2905 (1.8%)
All	All	0.89	0/2442	1.70	53/3295 (1.6%)

Chiral center outliers are detected by calculating the chiral volume of a chiral center and verifying if the center is modelled as a planar moiety or with the opposite hand. A planarity outlier is detected by checking planarity of atoms in a peptide group, atoms in a mainchain group or atoms of a sidechain that are expected to be planar.

Mol	Chain	#Chirality outliers	#Planarity outliers
2	H	0	7

There are no bond length outliers.

All (53) bond angle outliers are listed below:

Mol	Chain	Res	Type	Atoms	Z	Observed(°)	Ideal(°)
2	H	165	ARG	NE-CZ-NH2	-10.39	115.10	120.30
2	H	221	ARG	NE-CZ-NH1	10.13	125.36	120.30
2	H	225	TYR	CB-CG-CD2	-9.78	115.13	121.00
2	H	237	TRP	CD1-CG-CD2	8.08	112.76	106.30
2	H	51	TRP	CD1-CG-CD2	8.05	112.74	106.30
2	H	148	TRP	CD1-CG-CD2	8.00	112.70	106.30
2	H	148	TRP	CE2-CD2-CG	-7.66	101.17	107.30
2	H	94	TYR	CB-CG-CD2	-7.65	116.41	121.00
2	H	157	VAL	CB-CA-C	-7.47	97.20	111.40
2	H	207	TRP	CD1-CG-CD2	7.38	112.20	106.30
2	H	94	TYR	CB-CG-CD1	7.19	125.31	121.00
2	H	157	VAL	CG1-CB-CG2	7.14	122.32	110.90
2	H	51	TRP	CE2-CD2-CG	-7.09	101.63	107.30
2	H	96	TRP	CE2-CD2-CG	-7.09	101.63	107.30

Continued on next page...

Continued from previous page...

Mol	Chain	Res	Type	Atoms	Z	Observed(°)	Ideal(°)
2	H	237	TRP	CE2-CD2-CG	-7.04	101.67	107.30
2	H	101	ARG	NE-CZ-NH1	7.04	123.82	120.30
2	H	141	TRP	CD1-CG-CD2	7.00	111.90	106.30
2	H	29	TRP	CE2-CD2-CG	-6.96	101.73	107.30
2	H	145	ARG	NE-CZ-NH1	6.85	123.73	120.30
2	H	228	TYR	CB-CG-CD1	-6.84	116.89	121.00
2	H	29	TRP	CD1-CG-CD2	6.73	111.69	106.30
2	H	141	TRP	CE2-CD2-CG	-6.72	101.92	107.30
2	H	215	TRP	CE2-CD2-CG	-6.61	102.02	107.30
2	H	215	TRP	CD1-CG-CD2	6.59	111.57	106.30
2	H	207	TRP	CE2-CD2-CG	-6.48	102.11	107.30
2	H	245	LEU	CA-CB-CG	6.25	129.68	115.30
2	H	157	VAL	CA-CB-CG1	-6.22	101.57	110.90
2	H	60(D)	TRP	CE2-CD2-CG	-6.20	102.34	107.30
2	H	35	ARG	CB-CG-CD	-6.13	95.66	111.60
2	H	110	ARG	NE-CZ-NH1	6.00	123.30	120.30
2	H	187	ARG	NE-CZ-NH1	5.91	123.26	120.30
2	H	29	TRP	CG-CD2-CE3	5.83	139.15	133.90
2	H	96	TRP	CD1-CG-CD2	5.73	110.89	106.30
2	H	96	TRP	CB-CG-CD1	-5.73	119.55	127.00
2	H	51	TRP	CG-CD1-NE1	-5.61	104.49	110.10
2	H	165	ARG	NE-CZ-NH1	5.60	123.10	120.30
2	H	247	SER	N-CA-CB	5.50	118.75	110.50
2	H	148	TRP	CG-CD2-CE3	5.42	138.78	133.90
2	H	96	TRP	CG-CD2-CE3	5.41	138.77	133.90
2	H	237	TRP	CG-CD1-NE1	-5.32	104.78	110.10
2	H	46	LEU	CA-CB-CG	5.31	127.52	115.30
2	H	74	THR	CA-CB-CG2	-5.30	104.98	112.40
2	H	60(D)	TRP	CD1-CG-CD2	5.30	110.54	106.30
2	H	148	TRP	CB-CG-CD1	-5.23	120.20	127.00
2	H	160	LEU	CA-CB-CG	5.13	127.11	115.30
2	H	187	ARG	NE-CZ-NH2	-5.13	117.74	120.30
2	H	206	ARG	NE-CZ-NH1	5.12	122.86	120.30
2	H	101	ARG	NE-CZ-NH2	-5.09	117.75	120.30
2	H	221(A)	ASP	CB-CG-OD1	5.08	122.87	118.30
2	H	85	LEU	N-CA-C	-5.05	97.37	111.00
2	H	67	ARG	NE-CZ-NH1	5.03	122.82	120.30
2	H	207	TRP	CG-CD1-NE1	-5.03	105.07	110.10
2	H	225	TYR	CG-CD1-CE1	-5.00	117.30	121.30

There are no chirality outliers.

All (7) planarity outliers are listed below:

Mol	Chain	Res	Type	Group
2	H	147	THR	Peptide
2	H	149(E)	GLU	Peptide
2	H	204(A)	TYR	Sidechain
2	H	225	TYR	Sidechain
2	H	245	LEU	Peptide
2	H	246	GLY	Peptide
2	H	63	ASP	Peptide

5.2 Too-close contacts [i](#)

In the following table, the Non-H and H(model) columns list the number of non-hydrogen atoms and hydrogen atoms in the chain respectively. The H(added) column lists the number of hydrogen atoms added and optimized by MolProbity. The Clashes column lists the number of clashes within the asymmetric unit, whereas Symm-Clashes lists symmetry related clashes.

Mol	Chain	Non-H	H(model)	H(added)	Clashes	Symm-Clashes
1	L	290	63	276	4	0
2	H	2094	490	2097	49	0
3	H	35	7	36	2	0
4	H	135	270	0	7	0
4	L	17	34	0	0	0
All	All	2571	864	2409	52	0

The all-atom clashscore is defined as the number of clashes found per 1000 atoms (including hydrogen atoms). The all-atom clashscore for this structure is 12.

All (52) close contacts within the same asymmetric unit are listed below, sorted by their clash magnitude.

Atom-1	Atom-2	Interatomic distance (Å)	Clash overlap (Å)
2:H:212:ILE:HG13	2:H:229:THR:HB	1.59	0.84
2:H:90:ILE:HG13	4:H:654:HOH:O	1.94	0.68
2:H:209:GLN:NE2	4:H:647:HOH:O	2.27	0.66
2:H:145:ARG:HG2	2:H:150:VAL:HG11	1.76	0.66
2:H:212:ILE:HG12	4:H:647:HOH:O	1.96	0.65
2:H:68:ILE:HG22	2:H:118:ILE:HG12	1.77	0.64
2:H:211:GLY:HA2	2:H:229:THR:O	2.02	0.60
2:H:67:ARG:HG2	2:H:82:ILE:HG13	1.84	0.59
2:H:215:TRP:HB2	3:H:1:MIT:H1	1.84	0.59
2:H:164:GLU:HG2	2:H:167:VAL:HG13	1.85	0.57
2:H:70:LYS:HE3	2:H:72:SER:O	2.05	0.57
2:H:18:GLU:HG3	2:H:187:ARG:HB2	1.88	0.55

Continued on next page...

Continued from previous page...

Atom-1	Atom-2	Interatomic distance (Å)	Clash overlap (Å)
2:H:87:LYS:HD3	2:H:89:TYR:OH	2.06	0.55
2:H:165:ARG:HD3	2:H:169:LYS:NZ	2.24	0.53
2:H:128:THR:HG22	2:H:129(C):LEU:HD22	1.91	0.53
1:L:14(D):LYS:O	1:L:14(H):GLU:HB2	2.10	0.52
2:H:101:ARG:HB2	2:H:101:ARG:HH11	1.75	0.52
2:H:172:THR:HG21	2:H:176:ILE:HD11	1.92	0.52
2:H:72:SER:HB3	2:H:75:ARG:HH21	1.75	0.51
2:H:38:GLN:HB3	4:H:626:HOH:O	2.11	0.50
1:L:7:PHE:HA	1:L:12:VAL:HG23	1.94	0.50
2:H:99:LEU:HD11	3:H:1:MIT:H41	1.95	0.49
2:H:45:SER:HB3	2:H:198:PRO:HG3	1.94	0.49
2:H:29:TRP:O	2:H:45:SER:HA	2.12	0.49
2:H:101:ARG:HG2	2:H:234:LEU:HD21	1.96	0.48
2:H:172:THR:HB	4:H:659:HOH:O	2.14	0.47
2:H:139:THR:CG2	2:H:157:VAL:HG13	2.46	0.46
2:H:59:LEU:O	2:H:60(F):LYS:HG2	2.15	0.45
2:H:86:ASP:HB2	2:H:109:LYS:HA	1.99	0.45
2:H:163:VAL:HG23	2:H:183:ALA:HA	1.98	0.45
1:L:7:PHE:HA	1:L:12:VAL:CG2	2.47	0.45
1:L:3:LEU:HG	2:H:206:ARG:HG2	1.99	0.45
2:H:232:PHE:O	2:H:235:LYS:HB2	2.18	0.44
2:H:32:MET:SD	2:H:70:LYS:HD3	2.57	0.44
2:H:33:LEU:O	2:H:40:LEU:HD22	2.18	0.44
2:H:71:HIS:CE1	2:H:154:VAL:HG13	2.54	0.43
2:H:23:GLU:O	2:H:26:LEU:HB2	2.19	0.43
2:H:35:ARG:HD2	2:H:35:ARG:HH11	1.68	0.43
2:H:195:SER:HA	2:H:213:VAL:HB	2.00	0.43
2:H:60(C):PRO:HD3	2:H:96:TRP:CE3	2.54	0.42
2:H:66:VAL:HG13	2:H:68:ILE:HD11	2.01	0.42
2:H:52:VAL:O	2:H:105:LEU:HD23	2.19	0.42
2:H:57:HIS:NE2	2:H:195:SER:HB2	2.33	0.42
2:H:99:LEU:O	2:H:102:ASP:HB2	2.20	0.42
2:H:139:THR:HG22	2:H:157:VAL:HG13	2.02	0.42
2:H:65:LEU:HD13	2:H:82:ILE:HG23	2.03	0.41
2:H:87:LYS:HG3	4:H:643:HOH:O	2.19	0.41
2:H:101:ARG:HA	2:H:234:LEU:HD11	2.02	0.41
2:H:60(A):TYR:CE2	2:H:60(C):PRO:HB2	2.56	0.41
2:H:91:HIS:HA	2:H:92:PRO:HD2	1.85	0.41
2:H:77(A):ARG:HG2	4:H:594:HOH:O	2.20	0.40
2:H:94:TYR:HA	2:H:100:ASP:O	2.21	0.40

There are no symmetry-related clashes.

5.3 Torsion angles

5.3.1 Protein backbone

In the following table, the Percentiles column shows the percent Ramachandran outliers of the chain as a percentile score with respect to all X-ray entries followed by that with respect to entries of similar resolution.

The Analysed column shows the number of residues for which the backbone conformation was analysed, and the total number of residues.

Mol	Chain	Analysed	Favoured	Allowed	Outliers	Percentiles	
1	L	34/49 (69%)	26 (76%)	6 (18%)	2 (6%)	2	1
2	H	257/259 (99%)	234 (91%)	21 (8%)	2 (1%)	24	22
All	All	291/308 (94%)	260 (89%)	27 (9%)	4 (1%)	14	10

All (4) Ramachandran outliers are listed below:

Mol	Chain	Res	Type
1	L	1(B)	ALA
2	H	97(A)	GLU
1	L	11	GLN
2	H	60(E)	ASP

5.3.2 Protein sidechains

In the following table, the Percentiles column shows the percent sidechain outliers of the chain as a percentile score with respect to all X-ray entries followed by that with respect to entries of similar resolution.

The Analysed column shows the number of residues for which the sidechain conformation was analysed, and the total number of residues.

Mol	Chain	Analysed	Rotameric	Outliers	Percentiles	
1	L	30/43 (70%)	26 (87%)	4 (13%)	5	4
2	H	226/226 (100%)	193 (85%)	33 (15%)	4	3
All	All	256/269 (95%)	219 (86%)	37 (14%)	4	3

All (37) residues with a non-rotameric sidechain are listed below:

Mol	Chain	Res	Type
1	L	6	LEU
1	L	11	GLN

Continued on next page...

Continued from previous page...

Mol	Chain	Res	Type
1	L	14(H)	GLU
1	L	15	ARG
2	H	33	LEU
2	H	36(A)	SER
2	H	37	PRO
2	H	38	GLN
2	H	46	LEU
2	H	50	ARG
2	H	60(E)	ASP
2	H	66	VAL
2	H	74	THR
2	H	75	ARG
2	H	77(A)	ARG
2	H	88	ILE
2	H	101	ARG
2	H	109	LYS
2	H	110	ARG
2	H	113	GLU
2	H	114	LEU
2	H	115	SER
2	H	116	ASP
2	H	128	THR
2	H	129(B)	LYS
2	H	129(C)	LEU
2	H	141	TRP
2	H	150	VAL
2	H	154	VAL
2	H	157	VAL
2	H	180	MET
2	H	192	GLU
2	H	195	SER
2	H	205	ASN
2	H	212	ILE
2	H	230	HIS
2	H	244	ARG

Some sidechains can be flipped to improve hydrogen bonding and reduce clashes. All (4) such sidechains are listed below:

Mol	Chain	Res	Type
2	H	71	HIS
2	H	131	HIS
2	H	159	ASN

Continued on next page...

Continued from previous page...

Mol	Chain	Res	Type
2	H	205	ASN

5.3.3 RNA [i](#)

There are no RNA molecules in this entry.

5.4 Non-standard residues in protein, DNA, RNA chains [i](#)

There are no non-standard protein/DNA/RNA residues in this entry.

5.5 Carbohydrates [i](#)

There are no carbohydrates in this entry.

5.6 Ligand geometry [i](#)

1 ligand is modelled in this entry.

In the following table, the Counts columns list the number of bonds (or angles) for which Mogul statistics could be retrieved, the number of bonds (or angles) that are observed in the model and the number of bonds (or angles) that are defined in the chemical component dictionary. The Link column lists molecule types, if any, to which the group is linked. The Z score for a bond length (or angle) is the number of standard deviations the observed value is removed from the expected value. A bond length (or angle) with $|Z| > 2$ is considered an outlier worth inspection. RMSZ is the root-mean-square of all Z scores of the bond lengths (or angles).

Mol	Type	Chain	Res	Link	Bond lengths			Bond angles		
					Counts	RMSZ	$\# Z > 2$	Counts	RMSZ	$\# Z > 2$
3	MIT	H	1	-	33,37,37	2.37	6 (18%)	39,53,53	2.70	15 (38%)

In the following table, the Chirals column lists the number of chiral outliers, the number of chiral centers analysed, the number of these observed in the model and the number defined in the chemical component dictionary. Similar counts are reported in the Torsion and Rings columns. '-' means no outliers of that kind were identified.

Mol	Type	Chain	Res	Link	Chirals	Torsions	Rings
3	MIT	H	1	-	-	0/26/52/52	0/3/3/3

All (6) bond length outliers are listed below:

Mol	Chain	Res	Type	Atoms	Z	Observed(Å)	Ideal(Å)
3	H	1	MIT	C9-C8	-3.85	1.36	1.40
3	H	1	MIT	C21-C11	3.52	1.57	1.53
3	H	1	MIT	S-N1	3.61	1.67	1.61
3	H	1	MIT	C8-S	4.20	1.83	1.77
3	H	1	MIT	O2-S	5.26	1.49	1.43
3	H	1	MIT	O1-S	9.09	1.53	1.43

All (15) bond angle outliers are listed below:

Mol	Chain	Res	Type	Atoms	Z	Observed(°)	Ideal(°)
3	H	1	MIT	O2-S-O1	-8.54	108.21	119.54
3	H	1	MIT	CA-N1-S	-4.20	112.88	121.42
3	H	1	MIT	C21-C31-C41	-3.97	102.80	109.38
3	H	1	MIT	C4-C9-C8	-3.57	113.54	118.30
3	H	1	MIT	O2-S-N1	-3.33	100.64	106.90
3	H	1	MIT	C3-C4-C9	-3.31	118.69	120.44
3	H	1	MIT	CG-CD-NE	-2.34	105.33	112.19
3	H	1	MIT	C1-N-C9	-2.04	116.20	120.55
3	H	1	MIT	C7-C8-S	2.18	120.05	117.39
3	H	1	MIT	O1-S-C8	2.40	111.58	107.63
3	H	1	MIT	CA-C-N2	2.67	123.57	118.81
3	H	1	MIT	C7-C8-C9	2.73	123.38	120.31
3	H	1	MIT	C5-C4-C9	4.12	124.28	117.71
3	H	1	MIT	C4-C9-N	4.43	125.07	120.56
3	H	1	MIT	C8-S-N1	7.15	120.68	108.44

There are no chirality outliers.

There are no torsion outliers.

There are no ring outliers.

1 monomer is involved in 2 short contacts:

Mol	Chain	Res	Type	Clashes	Symm-Clashes
3	H	1	MIT	2	0

5.7 Other polymers ⓘ

There are no such residues in this entry.

5.8 Polymer linkage issues ⓘ

There are no chain breaks in this entry.

6 Fit of model and data ⓘ

6.1 Protein, DNA and RNA chains ⓘ

EDS was not executed - this section will therefore be empty.

6.2 Non-standard residues in protein, DNA, RNA chains ⓘ

EDS was not executed - this section will therefore be empty.

6.3 Carbohydrates ⓘ

EDS was not executed - this section will therefore be empty.

6.4 Ligands ⓘ

EDS was not executed - this section will therefore be empty.

6.5 Other polymers ⓘ

EDS was not executed - this section will therefore be empty.