



Full wwPDB X-ray Structure Validation Report ⓘ

Feb 1, 2016 – 01:56 AM GMT

PDB ID : 2EWY
Title : Crystal structure of human BACE2 in complex with a hydroxyethylenamine transition-state inhibitor
Authors : Ostermann, N.
Deposited on : 2005-11-07
Resolution : 3.10 Å(reported)

This is a Full wwPDB X-ray Structure Validation Report for a publicly released PDB entry.
We welcome your comments at validation@mail.wwpdb.org
A user guide is available at
<http://wwpdb.org/validation/2016/XrayValidationReportHelp>
with specific help available everywhere you see the ⓘ symbol.

The following versions of software and data (see [references ⓘ](#)) were used in the production of this report:

MolProbity : 4.02b-467
Mogul : 1.7 (RC4), CSD as536be (2015)
Xtriage (Phenix) : 1.9-1692
EDS : rb-20026688
Percentile statistics : 20151230.v01 (using entries in the PDB archive December 30th 2015)
Refmac : 5.8.0135
CCP4 : 6.5.0
Ideal geometry (proteins) : Engh & Huber (2001)
Ideal geometry (DNA, RNA) : Parkinson et al. (1996)
Validation Pipeline (wwPDB-VP) : trunk26865

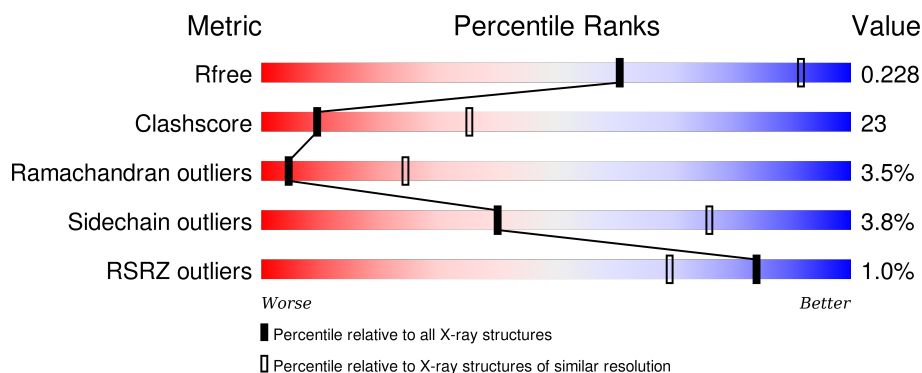
1 Overall quality at a glance

The following experimental techniques were used to determine the structure:

X-RAY DIFFRACTION

The reported resolution of this entry is 3.10 Å.

Percentile scores (ranging between 0-100) for global validation metrics of the entry are shown in the following graphic. The table shows the number of entries on which the scores are based.



Metric	Whole archive (#Entries)	Similar resolution (#Entries, resolution range(Å))
R_{free}	91344	1114 (3.14-3.06)
Clashscore	102246	1222 (3.14-3.06)
Ramachandran outliers	100387	1174 (3.14-3.06)
Sidechain outliers	100360	1174 (3.14-3.06)
RSRZ outliers	91569	1119 (3.14-3.06)

The table below summarises the geometric issues observed across the polymeric chains and their fit to the electron density. The red, orange, yellow and green segments on the lower bar indicate the fraction of residues that contain outliers for ≥ 3 , 2, 1 and 0 types of geometric quality criteria. A grey segment represents the fraction of residues that are not modelled. The numeric value for each fraction is indicated below the corresponding segment, with a dot representing fractions $\leq 5\%$. The upper red bar (where present) indicates the fraction of residues that have poor fit to the electron density. The numeric value is given above the bar.

Mol	Chain	Length	Quality of chain
1	A	383	<div> <div>2%</div> <div>59%</div> <div>34%</div> <div>• •</div> </div>
1	B	383	<div> <div>2%</div> <div>58%</div> <div>35%</div> <div>• •</div> </div>
1	C	383	<div> <div>2%</div> <div>58%</div> <div>36%</div> <div>• •</div> </div>
1	D	383	<div> <div>2%</div> <div>59%</div> <div>34%</div> <div>• •</div> </div>

2 Entry composition [i](#)

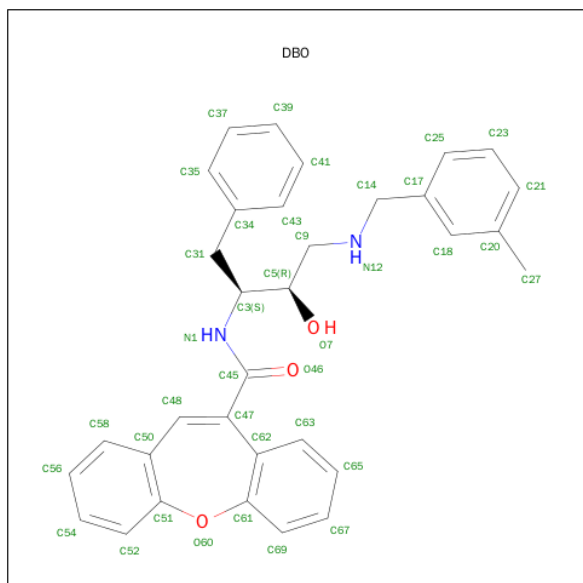
There are 3 unique types of molecules in this entry. The entry contains 11858 atoms, of which 0 are hydrogens and 0 are deuteriums.

In the tables below, the ZeroOcc column contains the number of atoms modelled with zero occupancy, the AltConf column contains the number of residues with at least one atom in alternate conformation and the Trace column contains the number of residues modelled with at most 2 atoms.

- Molecule 1 is a protein called Beta-secretase 2.

Mol	Chain	Residues	Atoms					ZeroOcc	AltConf	Trace
1	A	374	Total	C	N	O	S	0	0	0
			2893	1861	461	558	13			
1	B	374	Total	C	N	O	S	0	0	0
			2893	1861	461	558	13			
1	C	374	Total	C	N	O	S	0	0	0
			2893	1861	461	558	13			
1	D	374	Total	C	N	O	S	0	0	0
			2893	1861	461	558	13			

- Molecule 2 is N-{(1S,2R)-1-BENZYL-2-HYDROXY-3-[(3-METHYLBENZYL)AMINO]PROPYL}DIBENZO[B,F]OXEPINE-10-CARBOXAMIDE (three-letter code: DBO) (formula: $C_{33}H_{32}N_2O_3$).



Mol	Chain	Residues	Atoms				ZeroOcc	AltConf
2	A	1	Total	C	N	O	0	0
			38	33	2	3		

Continued on next page...

Continued from previous page...

Mol	Chain	Residues	Atoms				ZeroOcc	AltConf
2	B	1	Total	C	N	O	0	0
			38	33	2	3		
2	C	1	Total	C	N	O	0	0
			38	33	2	3		
2	D	1	Total	C	N	O	0	0
			38	33	2	3		

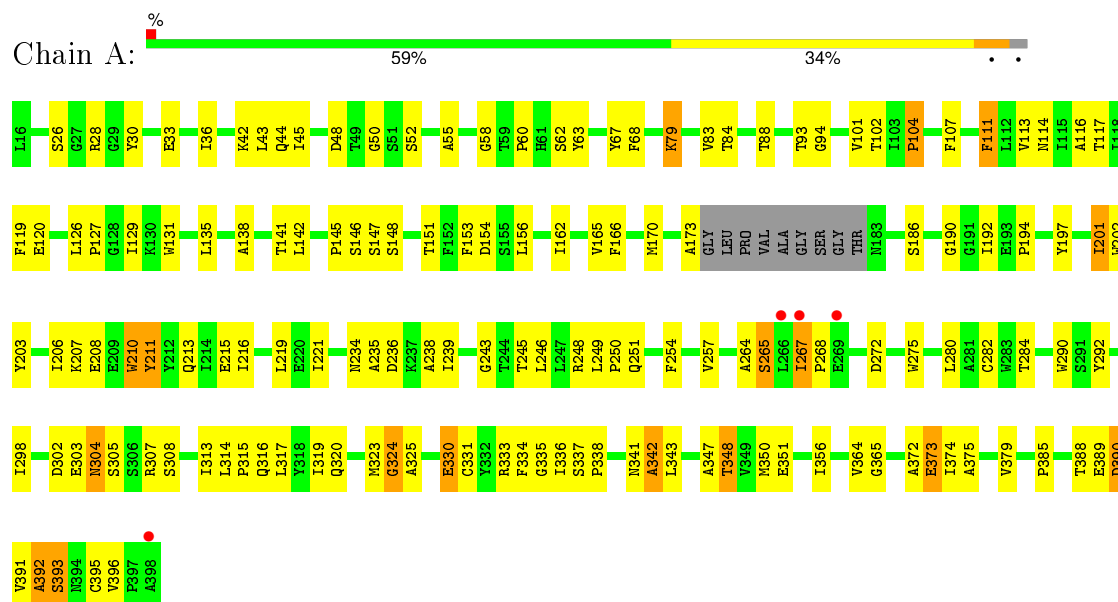
- Molecule 3 is water.

Mol	Chain	Residues	Atoms		ZeroOcc	AltConf
3	A	34	Total	O	0	0
			34	34		
3	B	32	Total	O	0	0
			32	32		
3	C	34	Total	O	0	0
			34	34		
3	D	34	Total	O	0	0
			34	34		

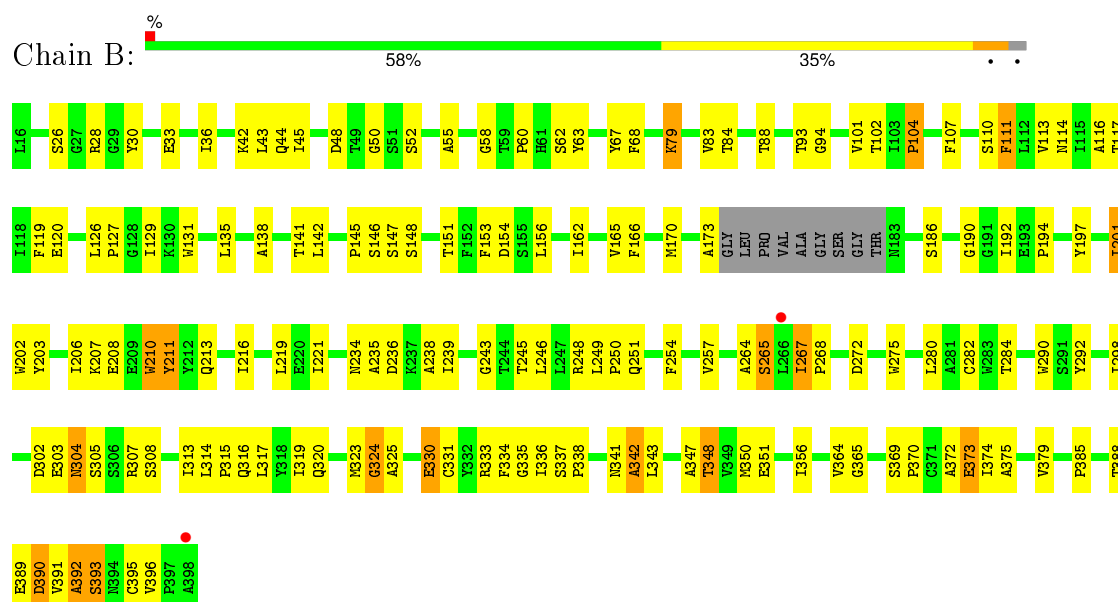
3 Residue-property plots

These plots are drawn for all protein, RNA and DNA chains in the entry. The first graphic for a chain summarises the proportions of errors displayed in the second graphic. The second graphic shows the sequence view annotated by issues in geometry and electron density. Residues are color-coded according to the number of geometric quality criteria for which they contain at least one outlier: green = 0, yellow = 1, orange = 2 and red = 3 or more. A red dot above a residue indicates a poor fit to the electron density ($RSRZ > 2$). Stretches of 2 or more consecutive residues without any outlier are shown as a green connector. Residues present in the sample, but not in the model, are shown in grey.

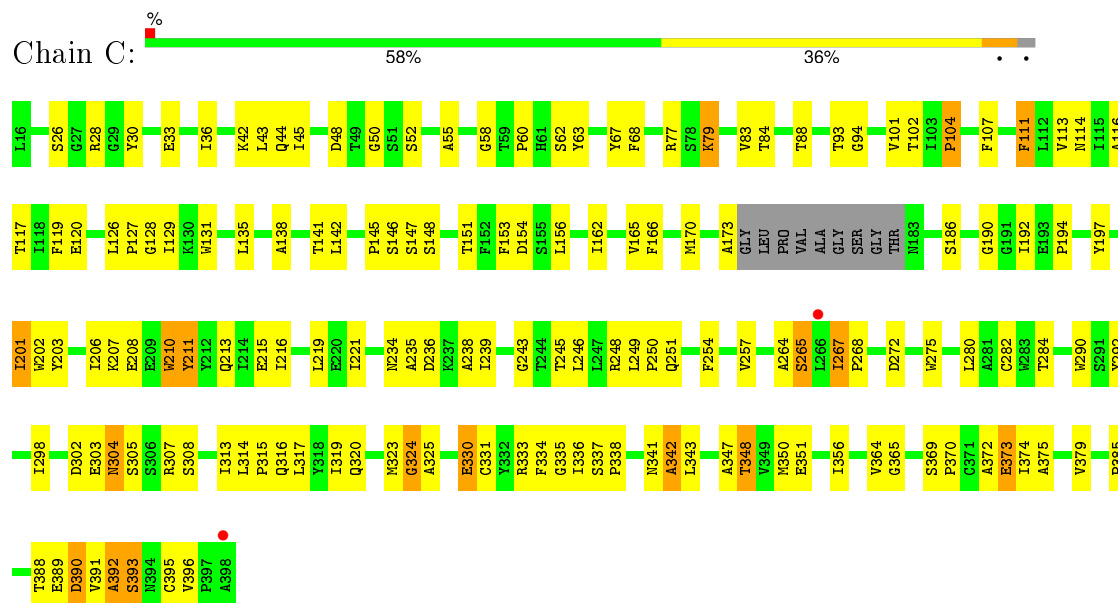
• Molecule 1: Beta-secretase 2



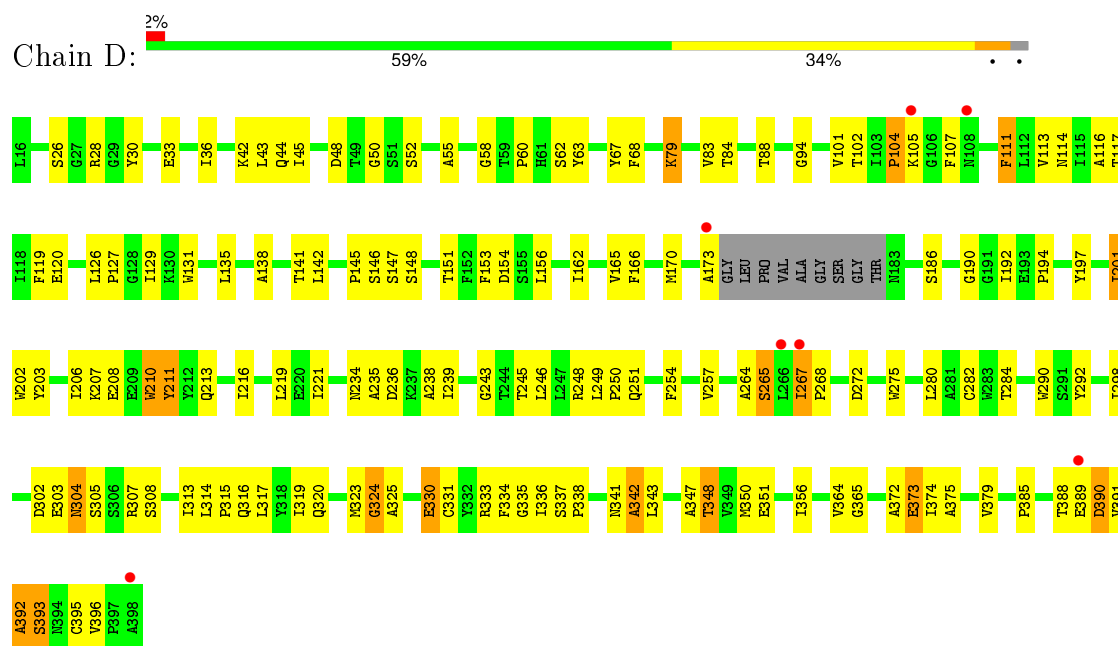
• Molecule 1: Beta-secretase 2



- Molecule 1: Beta-secretase 2



- Molecule 1: Beta-secretase 2



4 Data and refinement statistics

Property	Value	Source
Space group	H 3	Depositor
Cell constants a, b, c, α , β , γ	228.41Å 228.41Å 108.96Å 90.00° 90.00° 120.00°	Depositor
Resolution (Å)	24.92 – 3.10 57.10 – 3.05	Depositor EDS
% Data completeness (in resolution range)	99.0 (24.92-3.10) 99.0 (57.10-3.05)	Depositor EDS
R_{merge}	(Not available)	Depositor
R_{sym}	(Not available)	Depositor
$\langle I/\sigma(I) \rangle$ ¹	1.87 (at 3.07Å)	Xtriage
Refinement program	CNX 2000.1	Depositor
R, R_{free}	0.227 , 0.247 0.209 , 0.228	Depositor DCC
R_{free} test set	3796 reflections (11.09%)	DCC
Wilson B-factor (Å ²)	44.5	Xtriage
Anisotropy	0.500	Xtriage
Bulk solvent k_{sol} (e/Å ³), B_{sol} (Å ²)	0.28 , 19.7	EDS
Estimated twinning fraction	0.017 for h,-h-k,-l	Xtriage
L-test for twinning ²	$\langle L \rangle = 0.49$, $\langle L^2 \rangle = 0.32$	Xtriage
Outliers	0 of 39812 reflections	Xtriage
F_o, F_c correlation	0.90	EDS
Total number of atoms	11858	wwPDB-VP
Average B, all atoms (Å ²)	27.0	wwPDB-VP

Xtriage's analysis on translational NCS is as follows: *The largest off-origin peak in the Patterson function is 3.02% of the height of the origin peak. No significant pseudotranslation is detected.*

¹Intensities estimated from amplitudes.

²Theoretical values of $\langle |L| \rangle$, $\langle L^2 \rangle$ for acentric reflections are 0.5, 0.375 respectively for untwinned datasets, and 0.333, 0.2 for perfectly twinned datasets.

5 Model quality

5.1 Standard geometry

Bond lengths and bond angles in the following residue types are not validated in this section: DBO

The Z score for a bond length (or angle) is the number of standard deviations the observed value is removed from the expected value. A bond length (or angle) with $|Z| > 5$ is considered an outlier worth inspection. RMSZ is the root-mean-square of all Z scores of the bond lengths (or angles).

Mol	Chain	Bond lengths		Bond angles	
		RMSZ	$\# Z > 5$	RMSZ	$\# Z > 5$
1	A	0.42	0/2965	0.69	2/4033 (0.0%)
1	B	0.42	0/2965	0.69	2/4033 (0.0%)
1	C	0.42	0/2965	0.70	2/4033 (0.0%)
1	D	0.42	0/2965	0.69	2/4033 (0.0%)
All	All	0.42	0/11860	0.69	8/16132 (0.0%)

There are no bond length outliers.

All (8) bond angle outliers are listed below:

Mol	Chain	Res	Type	Atoms	Z	Observed(°)	Ideal(°)
1	B	319	ILE	N-CA-C	-5.35	96.57	111.00
1	A	319	ILE	N-CA-C	-5.34	96.58	111.00
1	D	319	ILE	N-CA-C	-5.34	96.57	111.00
1	C	319	ILE	N-CA-C	-5.34	96.58	111.00
1	B	211	TYR	N-CA-C	-5.08	97.29	111.00
1	A	211	TYR	N-CA-C	-5.08	97.29	111.00
1	C	211	TYR	N-CA-C	-5.08	97.29	111.00
1	D	211	TYR	N-CA-C	-5.07	97.30	111.00

There are no chirality outliers.

There are no planarity outliers.

5.2 Too-close contacts

In the following table, the Non-H and H(model) columns list the number of non-hydrogen atoms and hydrogen atoms in the chain respectively. The H(added) column lists the number of hydrogen atoms added and optimized by MolProbity. The Clashes column lists the number of clashes within the asymmetric unit, whereas Symm-Clashes lists symmetry related clashes.

Mol	Chain	Non-H	H(model)	H(added)	Clashes	Symm-Clashes
1	A	2893	0	2808	132	1
1	B	2893	0	2808	132	1
1	C	2893	0	2808	133	1
1	D	2893	0	2808	128	1
2	A	38	0	32	3	0
2	B	38	0	32	4	0
2	C	38	0	32	3	0
2	D	38	0	32	3	0
3	A	34	0	0	2	0
3	B	32	0	0	2	0
3	C	34	0	0	2	0
3	D	34	0	0	1	0
All	All	11858	0	11360	522	2

The all-atom clashscore is defined as the number of clashes found per 1000 atoms (including hydrogen atoms). The all-atom clashscore for this structure is 23.

All (522) close contacts within the same asymmetric unit are listed below, sorted by their clash magnitude.

Atom-1	Atom-2	Interatomic distance (Å)	Clash overlap (Å)
1:A:280:LEU:HD12	1:B:280:LEU:HD12	1.48	0.93
1:C:280:LEU:HD12	1:D:280:LEU:HD12	1.48	0.93
1:C:36:ILE:HD12	1:C:43:LEU:HD12	1.55	0.88
1:D:36:ILE:HD12	1:D:43:LEU:HD12	1.55	0.88
1:B:36:ILE:HD12	1:B:43:LEU:HD12	1.55	0.88
1:A:36:ILE:HD12	1:A:43:LEU:HD12	1.55	0.86
1:D:265:SER:O	1:D:268:PRO:HD2	1.82	0.79
1:A:265:SER:O	1:A:268:PRO:HD2	1.82	0.79
1:B:265:SER:O	1:B:268:PRO:HD2	1.82	0.79
1:C:265:SER:O	1:C:268:PRO:HD2	1.82	0.78
1:B:216:ILE:HD12	1:B:343:LEU:HD23	1.66	0.77
1:C:216:ILE:HD12	1:C:343:LEU:HD23	1.66	0.77
1:D:216:ILE:HD12	1:D:343:LEU:HD23	1.66	0.77
1:A:390:ASP:OD2	1:A:391:VAL:HG23	1.86	0.77
1:B:390:ASP:OD2	1:B:391:VAL:HG23	1.85	0.76
1:A:216:ILE:HD12	1:A:343:LEU:HD23	1.66	0.76
1:D:390:ASP:OD2	1:D:391:VAL:HG23	1.86	0.76
1:C:390:ASP:OD2	1:C:391:VAL:HG23	1.85	0.76
1:B:245:THR:HG22	1:B:246:LEU:HG	1.68	0.76
1:A:246:LEU:HA	1:A:348:THR:CG2	2.16	0.75
1:B:246:LEU:HA	1:B:348:THR:CG2	2.16	0.75
1:C:245:THR:HG22	1:C:246:LEU:HG	1.68	0.75

Continued on next page...

Continued from previous page...

Atom-1	Atom-2	Interatomic distance (Å)	Clash overlap (Å)
1:D:245:THR:HG22	1:D:246:LEU:HG	1.68	0.75
1:C:246:LEU:HA	1:C:348:THR:CG2	2.16	0.75
1:B:201:ILE:HD12	1:B:356:ILE:HD12	1.67	0.75
1:C:201:ILE:HD12	1:C:356:ILE:HD12	1.67	0.75
1:D:246:LEU:HA	1:D:348:THR:CG2	2.16	0.75
1:D:201:ILE:HD11	1:D:203:TYR:CZ	2.22	0.75
1:A:201:ILE:HD12	1:A:356:ILE:HD12	1.67	0.75
1:A:245:THR:HG22	1:A:246:LEU:HG	1.68	0.74
1:A:201:ILE:HD11	1:A:203:TYR:CZ	2.22	0.74
1:D:201:ILE:HD12	1:D:356:ILE:HD12	1.67	0.74
1:B:201:ILE:HD11	1:B:203:TYR:CZ	2.22	0.74
1:C:201:ILE:HD11	1:C:203:TYR:CZ	2.22	0.74
1:B:324:GLY:HA2	1:B:330:GLU:HA	1.72	0.71
1:C:324:GLY:HA2	1:C:330:GLU:HA	1.72	0.71
1:A:324:GLY:HA2	1:A:330:GLU:HA	1.72	0.70
1:D:324:GLY:HA2	1:D:330:GLU:HA	1.72	0.69
1:D:48:ASP:OD1	1:D:243:GLY:HA3	1.96	0.65
1:B:216:ILE:HD12	1:B:343:LEU:CD2	2.26	0.64
1:A:48:ASP:OD1	1:A:243:GLY:HA3	1.96	0.64
1:D:216:ILE:HD12	1:D:343:LEU:CD2	2.27	0.64
1:C:216:ILE:HD12	1:C:343:LEU:CD2	2.27	0.64
1:B:48:ASP:OD1	1:B:243:GLY:HA3	1.96	0.64
1:B:341:ASN:O	1:B:342:ALA:HB2	1.96	0.64
1:C:341:ASN:O	1:C:342:ALA:HB2	1.96	0.64
1:C:48:ASP:OD1	1:C:243:GLY:HA3	1.96	0.64
1:A:216:ILE:HD12	1:A:343:LEU:CD2	2.26	0.64
1:A:88:THR:HG21	2:A:1001:DBO:H58	1.79	0.64
1:B:151:THR:HB	1:B:154:ASP:OD2	1.98	0.64
1:B:88:THR:HG21	2:B:1002:DBO:H58	1.79	0.64
1:D:151:THR:HB	1:D:154:ASP:OD2	1.98	0.64
1:A:341:ASN:O	1:A:342:ALA:HB2	1.96	0.64
1:A:151:THR:HB	1:A:154:ASP:OD2	1.98	0.64
1:D:341:ASN:O	1:D:342:ALA:HB2	1.96	0.63
1:A:58:GLY:HA3	1:A:117:THR:HG22	1.80	0.63
1:C:58:GLY:HA3	1:C:117:THR:HG22	1.80	0.63
1:D:192:ILE:CD1	1:D:356:ILE:HD13	2.29	0.63
1:D:58:GLY:HA3	1:D:117:THR:HG22	1.80	0.63
1:C:88:THR:HG21	2:C:1003:DBO:H58	1.79	0.63
1:C:192:ILE:CD1	1:C:356:ILE:HD13	2.29	0.63
1:D:88:THR:HG21	2:D:1004:DBO:H58	1.80	0.63
1:B:58:GLY:HA3	1:B:117:THR:HG22	1.80	0.63

Continued on next page...

Continued from previous page...

Atom-1	Atom-2	Interatomic distance (Å)	Clash overlap (Å)
1:B:192:ILE:CD1	1:B:356:ILE:HD13	2.29	0.63
1:D:248:ARG:O	1:D:343:LEU:HD12	1.98	0.63
1:C:248:ARG:O	1:C:343:LEU:HD12	1.98	0.62
1:C:151:THR:HB	1:C:154:ASP:OD2	1.98	0.62
1:B:248:ARG:O	1:B:343:LEU:HD12	1.98	0.62
1:A:248:ARG:O	1:A:343:LEU:HD12	1.98	0.62
1:A:192:ILE:CD1	1:A:356:ILE:HD13	2.29	0.62
1:D:30:TYR:CZ	1:D:170:MET:HB3	2.35	0.62
1:B:30:TYR:CZ	1:B:170:MET:HB3	2.35	0.62
1:A:30:TYR:CZ	1:A:170:MET:HB3	2.35	0.61
1:C:30:TYR:CZ	1:C:170:MET:HB3	2.35	0.61
1:D:307:ARG:HB3	1:D:385:PRO:HB2	1.83	0.61
1:A:26:SER:HB2	1:A:351:GLU:OE2	2.01	0.61
1:D:26:SER:HB2	1:D:351:GLU:OE2	2.01	0.61
1:B:26:SER:HB2	1:B:351:GLU:OE2	2.01	0.60
1:C:26:SER:HB2	1:C:351:GLU:OE2	2.01	0.60
1:B:307:ARG:HB3	1:B:385:PRO:HB2	1.83	0.60
1:B:391:VAL:O	1:B:392:ALA:HB3	2.01	0.60
1:C:391:VAL:O	1:C:392:ALA:HB3	2.01	0.60
1:C:201:ILE:CD1	1:C:356:ILE:HD12	2.31	0.60
1:A:307:ARG:HB3	1:A:385:PRO:HB2	1.83	0.60
1:B:201:ILE:CD1	1:B:356:ILE:HD12	2.31	0.60
1:A:201:ILE:CD1	1:A:356:ILE:HD12	2.31	0.60
1:D:391:VAL:O	1:D:392:ALA:HB3	2.01	0.60
1:A:391:VAL:O	1:A:392:ALA:HB3	2.01	0.60
1:D:201:ILE:CD1	1:D:356:ILE:HD12	2.31	0.59
1:B:372:ALA:O	1:B:379:VAL:HG12	2.02	0.59
1:C:307:ARG:HB3	1:C:385:PRO:HB2	1.83	0.59
1:C:372:ALA:O	1:C:379:VAL:HG12	2.02	0.59
1:C:36:ILE:HD12	1:C:43:LEU:CD1	2.31	0.59
1:D:207:LYS:HB2	1:D:213:GLN:HG2	1.85	0.59
1:B:207:LYS:HB2	1:B:213:GLN:HG2	1.85	0.58
1:B:246:LEU:HA	1:B:348:THR:HG22	1.85	0.58
1:C:290:TRP:CD2	1:C:316:GLN:HG3	2.38	0.58
1:A:207:LYS:HB2	1:A:213:GLN:HG2	1.85	0.58
1:D:290:TRP:CD2	1:D:316:GLN:HG3	2.38	0.58
1:C:207:LYS:HB2	1:C:213:GLN:HG2	1.85	0.58
1:A:372:ALA:O	1:A:379:VAL:HG12	2.02	0.58
1:D:36:ILE:HD12	1:D:43:LEU:CD1	2.31	0.58
1:B:290:TRP:CD2	1:B:316:GLN:HG3	2.38	0.58
1:D:372:ALA:O	1:D:379:VAL:HG12	2.02	0.58

Continued on next page...

Continued from previous page...

Atom-1	Atom-2	Interatomic distance (Å)	Clash overlap (Å)
1:B:314:LEU:HB3	1:B:315:PRO:HD2	1.86	0.58
1:C:246:LEU:HA	1:C:348:THR:HG22	1.85	0.58
1:D:246:LEU:HA	1:D:348:THR:HG22	1.85	0.58
1:C:314:LEU:HB3	1:C:315:PRO:HD2	1.86	0.58
1:A:246:LEU:HA	1:A:348:THR:HG22	1.85	0.57
1:A:290:TRP:CD2	1:A:316:GLN:HG3	2.38	0.57
1:D:314:LEU:HB3	1:D:315:PRO:HD2	1.86	0.57
1:A:170:MET:CE	1:A:350:MET:HB2	2.35	0.57
1:D:170:MET:CE	1:D:350:MET:HB2	2.35	0.57
1:B:316:GLN:HB2	1:B:379:VAL:CG2	2.35	0.57
1:A:341:ASN:O	1:A:342:ALA:CB	2.52	0.56
1:D:341:ASN:O	1:D:342:ALA:CB	2.52	0.56
1:B:341:ASN:O	1:B:342:ALA:CB	2.52	0.56
1:D:316:GLN:HB2	1:D:379:VAL:CG2	2.35	0.56
1:A:316:GLN:HB2	1:A:379:VAL:CG2	2.35	0.56
1:C:316:GLN:HB2	1:C:379:VAL:CG2	2.35	0.56
1:C:341:ASN:O	1:C:342:ALA:CB	2.52	0.56
1:B:170:MET:CE	1:B:350:MET:HB2	2.35	0.56
1:A:151:THR:HG22	1:A:153:PHE:N	2.20	0.56
1:A:314:LEU:HB3	1:A:315:PRO:HD2	1.86	0.56
1:C:170:MET:CE	1:C:350:MET:HB2	2.35	0.56
1:D:151:THR:HG22	1:D:153:PHE:N	2.20	0.56
1:C:36:ILE:CD1	1:C:43:LEU:HD12	2.33	0.56
1:A:265:SER:HB3	1:A:292:TYR:O	2.06	0.56
1:A:201:ILE:HG12	1:A:201:ILE:O	2.05	0.56
1:C:265:SER:HB3	1:C:292:TYR:O	2.06	0.56
1:D:265:SER:HB3	1:D:292:TYR:O	2.07	0.55
1:C:151:THR:HG22	1:C:153:PHE:N	2.20	0.55
1:B:36:ILE:CD1	1:B:43:LEU:HD12	2.33	0.55
1:A:192:ILE:HD13	1:A:356:ILE:HD13	1.88	0.55
1:B:265:SER:HB3	1:B:292:TYR:O	2.06	0.55
1:B:151:THR:HG22	1:B:153:PHE:N	2.20	0.55
1:A:43:LEU:HD11	1:A:68:PHE:HB2	1.89	0.55
1:A:36:ILE:HD12	1:A:43:LEU:CD1	2.31	0.55
1:D:36:ILE:CD1	1:D:43:LEU:HD12	2.34	0.55
1:D:43:LEU:HD11	1:D:68:PHE:HB2	1.89	0.55
1:D:192:ILE:HD13	1:D:356:ILE:HD13	1.88	0.55
1:B:396:VAL:HG23	1:B:396:VAL:O	2.06	0.55
1:B:201:ILE:HG12	1:B:201:ILE:O	2.05	0.55
1:D:201:ILE:O	1:D:201:ILE:HG12	2.05	0.55
1:B:43:LEU:HD11	1:B:68:PHE:HB2	1.89	0.55

Continued on next page...

Continued from previous page...

Atom-1	Atom-2	Interatomic distance (Å)	Clash overlap (Å)
1:D:201:ILE:HD11	1:D:203:TYR:OH	2.07	0.55
1:A:272:ASP:HA	1:A:275:TRP:CD1	2.42	0.55
1:B:173:ALA:CB	1:B:374:ILE:HD11	2.36	0.55
1:D:173:ALA:CB	1:D:374:ILE:HD11	2.36	0.55
1:B:201:ILE:HD11	1:B:203:TYR:OH	2.07	0.55
1:B:192:ILE:HD13	1:B:356:ILE:HD13	1.88	0.55
1:A:201:ILE:HD11	1:A:203:TYR:OH	2.07	0.55
1:A:396:VAL:O	1:A:396:VAL:HG23	2.06	0.55
1:C:43:LEU:HD11	1:C:68:PHE:HB2	1.89	0.54
1:C:201:ILE:HD11	1:C:203:TYR:OH	2.07	0.54
1:A:173:ALA:CB	1:A:374:ILE:HD11	2.36	0.54
1:B:272:ASP:HA	1:B:275:TRP:CD1	2.42	0.54
1:C:396:VAL:HG23	1:C:396:VAL:O	2.06	0.54
1:D:272:ASP:HA	1:D:275:TRP:CD1	2.42	0.54
1:C:173:ALA:CB	1:C:374:ILE:HD11	2.36	0.54
1:C:192:ILE:HD13	1:C:356:ILE:HD13	1.88	0.54
1:C:201:ILE:HG12	1:C:201:ILE:O	2.05	0.54
1:B:272:ASP:HA	1:B:275:TRP:HD1	1.73	0.54
1:D:272:ASP:HA	1:D:275:TRP:HD1	1.72	0.54
1:C:79:LYS:HE3	1:C:114:ASN:OD1	2.07	0.54
1:D:79:LYS:HE3	1:D:114:ASN:OD1	2.07	0.54
1:C:272:ASP:HA	1:C:275:TRP:HD1	1.72	0.54
1:B:79:LYS:HE3	1:B:114:ASN:OD1	2.07	0.54
1:C:264:ALA:O	1:C:265:SER:HB3	2.07	0.54
1:A:272:ASP:HA	1:A:275:TRP:HD1	1.72	0.54
1:C:272:ASP:HA	1:C:275:TRP:CD1	2.42	0.54
1:A:264:ALA:O	1:A:265:SER:HB3	2.07	0.54
1:A:79:LYS:HE3	1:A:114:ASN:OD1	2.07	0.54
1:D:396:VAL:O	1:D:396:VAL:HG23	2.06	0.54
1:A:334:PHE:CE2	1:A:336:ILE:HB	2.43	0.54
1:A:302:ASP:OD1	1:A:303:GLU:N	2.42	0.53
1:A:234:ASN:HB2	1:A:395:CYS:O	2.09	0.53
1:D:302:ASP:OD1	1:D:303:GLU:N	2.42	0.53
1:B:264:ALA:O	1:B:265:SER:HB3	2.07	0.53
1:B:334:PHE:CE2	1:B:336:ILE:HB	2.43	0.53
1:B:234:ASN:HB2	1:B:395:CYS:O	2.09	0.53
1:C:302:ASP:OD1	1:C:303:GLU:N	2.42	0.53
1:D:264:ALA:O	1:D:265:SER:HB3	2.07	0.53
1:B:391:VAL:O	1:B:392:ALA:CB	2.57	0.53
1:C:234:ASN:HB2	1:C:395:CYS:O	2.09	0.53
1:D:334:PHE:CE2	1:D:336:ILE:HB	2.43	0.53

Continued on next page...

Continued from previous page...

Atom-1	Atom-2	Interatomic distance (Å)	Clash overlap (Å)
1:D:234:ASN:HB2	1:D:395:CYS:O	2.09	0.53
1:B:36:ILE:HD12	1:B:43:LEU:CD1	2.31	0.53
1:A:52:SER:OG	1:A:138:ALA:HB3	2.09	0.53
1:C:391:VAL:O	1:C:392:ALA:CB	2.57	0.53
1:C:52:SER:OG	1:C:138:ALA:HB3	2.08	0.53
1:B:302:ASP:OD1	1:B:303:GLU:N	2.42	0.53
1:C:249:LEU:CD2	1:C:343:LEU:HD11	2.39	0.52
1:A:165:VAL:HG12	1:A:166:PHE:N	2.24	0.52
1:C:334:PHE:CE2	1:C:336:ILE:HB	2.43	0.52
1:D:52:SER:OG	1:D:138:ALA:HB3	2.09	0.52
1:A:249:LEU:CD2	1:A:343:LEU:HD11	2.39	0.52
1:D:391:VAL:O	1:D:392:ALA:CB	2.57	0.52
1:B:165:VAL:HG12	1:B:166:PHE:N	2.24	0.52
1:B:265:SER:HA	1:B:267:ILE:CD1	2.40	0.52
1:C:265:SER:HA	1:C:267:ILE:CD1	2.40	0.52
1:A:391:VAL:O	1:A:392:ALA:CB	2.57	0.52
1:B:52:SER:OG	1:B:138:ALA:HB3	2.09	0.52
1:B:162:ILE:HD12	1:B:190:GLY:HA3	1.92	0.52
1:C:165:VAL:HG12	1:C:166:PHE:N	2.24	0.52
1:A:45:ILE:HG21	1:A:135:LEU:HB2	1.91	0.52
1:D:63:TYR:CD2	1:D:127:PRO:HA	2.45	0.52
1:B:63:TYR:CD2	1:B:127:PRO:HA	2.45	0.52
1:B:373:GLU:HG2	1:B:374:ILE:N	2.24	0.52
1:D:165:VAL:HG12	1:D:166:PHE:N	2.24	0.52
1:C:162:ILE:HD12	1:C:190:GLY:HA3	1.92	0.52
1:A:36:ILE:CD1	1:A:43:LEU:HD12	2.33	0.52
1:A:265:SER:HA	1:A:267:ILE:CD1	2.40	0.52
1:D:265:SER:HA	1:D:267:ILE:CD1	2.40	0.52
1:D:162:ILE:HD12	1:D:190:GLY:HA3	1.92	0.52
1:A:63:TYR:CD2	1:A:127:PRO:HA	2.45	0.52
1:D:219:LEU:HD11	1:D:298:ILE:HG12	1.92	0.52
1:D:249:LEU:CD2	1:D:343:LEU:HD11	2.39	0.51
1:A:249:LEU:HD22	1:A:343:LEU:HD11	1.91	0.51
1:A:219:LEU:HD11	1:A:298:ILE:HG12	1.92	0.51
1:C:249:LEU:HD22	1:C:343:LEU:HD11	1.91	0.51
1:B:45:ILE:HG21	1:B:135:LEU:HB2	1.91	0.51
1:B:219:LEU:HD11	1:B:298:ILE:HG12	1.92	0.51
1:C:219:LEU:HD11	1:C:298:ILE:HG12	1.93	0.51
1:D:284:THR:HG22	1:D:284:THR:O	2.11	0.51
1:B:265:SER:HA	1:B:267:ILE:HD12	1.91	0.51
1:C:265:SER:HA	1:C:267:ILE:HD12	1.91	0.51

Continued on next page...

Continued from previous page...

Atom-1	Atom-2	Interatomic distance (Å)	Clash overlap (Å)
1:B:249:LEU:CD2	1:B:343:LEU:HD11	2.39	0.51
1:A:210:TRP:CD1	1:A:211:TYR:N	2.76	0.51
1:A:265:SER:HA	1:A:267:ILE:HD12	1.91	0.51
1:A:284:THR:O	1:A:284:THR:HG22	2.11	0.51
1:B:249:LEU:HD22	1:B:343:LEU:HD11	1.92	0.51
1:A:373:GLU:HG2	1:A:374:ILE:N	2.24	0.51
1:A:323:MET:CE	1:A:324:GLY:H	2.24	0.51
1:B:323:MET:CE	1:B:324:GLY:H	2.24	0.51
1:D:373:GLU:HG2	1:D:374:ILE:N	2.24	0.51
1:C:63:TYR:CD2	1:C:127:PRO:HA	2.45	0.51
1:C:392:ALA:O	1:C:393:SER:CB	2.59	0.51
1:C:373:GLU:HG2	1:C:374:ILE:N	2.24	0.51
1:D:265:SER:HA	1:D:267:ILE:HD12	1.91	0.51
1:D:249:LEU:HD22	1:D:343:LEU:HD11	1.92	0.51
1:D:45:ILE:HG21	1:D:135:LEU:HB2	1.91	0.51
1:C:284:THR:HG22	1:C:284:THR:O	2.11	0.50
1:A:162:ILE:HD12	1:A:190:GLY:HA3	1.92	0.50
1:B:284:THR:O	1:B:284:THR:HG22	2.11	0.50
1:C:45:ILE:HG21	1:C:135:LEU:HB2	1.91	0.50
1:A:392:ALA:O	1:A:393:SER:CB	2.59	0.50
1:C:323:MET:CE	1:C:324:GLY:H	2.24	0.50
1:C:210:TRP:CD1	1:C:211:TYR:N	2.76	0.50
1:B:392:ALA:O	1:B:393:SER:CB	2.59	0.50
1:D:323:MET:CE	1:D:324:GLY:H	2.24	0.50
1:A:280:LEU:HD22	1:A:333:ARG:HB3	1.95	0.49
1:D:392:ALA:O	1:D:393:SER:CB	2.59	0.49
1:B:280:LEU:HD22	1:B:333:ARG:HB3	1.95	0.49
1:C:265:SER:CA	1:C:267:ILE:HD12	2.42	0.49
1:C:201:ILE:HD12	1:C:356:ILE:CD1	2.42	0.49
1:D:201:ILE:HD12	1:D:356:ILE:CD1	2.42	0.49
1:B:201:ILE:HD12	1:B:356:ILE:CD1	2.42	0.49
1:A:206:ILE:HG12	1:A:364:VAL:HG23	1.95	0.49
1:A:201:ILE:HD12	1:A:356:ILE:CD1	2.42	0.49
1:D:265:SER:CA	1:D:267:ILE:HD12	2.42	0.48
1:D:210:TRP:CD1	1:D:211:TYR:N	2.76	0.48
1:B:265:SER:CA	1:B:267:ILE:HD12	2.42	0.48
1:D:111:PHE:CZ	1:D:156:LEU:HD13	2.48	0.48
1:A:202:TRP:O	1:A:365:GLY:HA2	2.13	0.48
1:A:265:SER:CA	1:A:267:ILE:HD12	2.42	0.48
1:C:208:GLU:HB3	1:C:210:TRP:NE1	2.28	0.48
1:D:208:GLU:HB3	1:D:210:TRP:NE1	2.28	0.48

Continued on next page...

Continued from previous page...

Atom-1	Atom-2	Interatomic distance (Å)	Clash overlap (Å)
1:D:202:TRP:O	1:D:365:GLY:HA2	2.14	0.48
1:A:111:PHE:CZ	1:A:156:LEU:HD13	2.48	0.48
1:B:202:TRP:O	1:B:365:GLY:HA2	2.14	0.48
1:C:280:LEU:HD22	1:C:333:ARG:HB3	1.95	0.48
1:D:206:ILE:HG12	1:D:364:VAL:HG23	1.95	0.48
1:B:111:PHE:CZ	1:B:156:LEU:HD13	2.48	0.48
1:B:208:GLU:HB3	1:B:210:TRP:NE1	2.28	0.48
1:B:210:TRP:CD1	1:B:211:TYR:N	2.76	0.48
1:C:202:TRP:O	1:C:365:GLY:HA2	2.14	0.48
1:D:42:LYS:O	1:D:43:LEU:HD23	2.14	0.48
1:A:42:LYS:O	1:A:43:LEU:HD23	2.14	0.48
1:A:374:ILE:O	1:A:375:ALA:HB3	2.13	0.48
1:C:111:PHE:CZ	1:C:156:LEU:HD13	2.48	0.48
1:B:194:PRO:HA	1:B:197:TYR:CE1	2.49	0.48
1:A:235:ALA:HA	1:A:236:ASP:HA	1.48	0.48
1:D:280:LEU:HD22	1:D:333:ARG:HB3	1.95	0.48
1:C:42:LYS:O	1:C:43:LEU:HD23	2.14	0.48
1:A:194:PRO:HA	1:A:197:TYR:CE1	2.49	0.48
1:D:221:ILE:HD11	1:D:257:VAL:HG22	1.96	0.48
1:A:173:ALA:HB3	1:A:374:ILE:HD11	1.96	0.48
1:C:206:ILE:HG12	1:C:364:VAL:HG23	1.95	0.48
1:B:173:ALA:HB3	1:B:374:ILE:HD11	1.96	0.47
1:B:374:ILE:O	1:B:375:ALA:HB3	2.13	0.47
1:D:173:ALA:HB3	1:D:374:ILE:HD11	1.96	0.47
1:A:208:GLU:HB3	1:A:210:TRP:NE1	2.28	0.47
1:C:221:ILE:HD11	1:C:257:VAL:HG22	1.96	0.47
1:D:249:LEU:HA	1:D:343:LEU:HD13	1.96	0.47
1:D:374:ILE:O	1:D:375:ALA:HB3	2.13	0.47
1:C:173:ALA:HB3	1:C:374:ILE:HD11	1.96	0.47
1:B:221:ILE:HD11	1:B:257:VAL:HG22	1.96	0.47
1:B:320:GLN:NE2	1:B:348:THR:HB	2.29	0.47
1:C:146:SER:C	1:C:148:SER:H	2.17	0.47
1:B:42:LYS:O	1:B:43:LEU:HD23	2.14	0.47
1:B:249:LEU:HA	1:B:343:LEU:HD13	1.96	0.47
1:A:323:MET:HE2	1:A:324:GLY:N	2.29	0.47
1:C:219:LEU:CD1	1:C:298:ILE:HG12	2.45	0.47
1:D:146:SER:C	1:D:148:SER:H	2.17	0.47
1:B:206:ILE:HG12	1:B:364:VAL:HG23	1.95	0.47
1:C:249:LEU:HA	1:C:343:LEU:HD13	1.96	0.47
1:D:250:PRO:HD2	1:D:343:LEU:HD13	1.96	0.47
1:D:320:GLN:NE2	1:D:348:THR:HB	2.29	0.47

Continued on next page...

Continued from previous page...

Atom-1	Atom-2	Interatomic distance (Å)	Clash overlap (Å)
1:D:323:MET:HE3	1:D:324:GLY:H	1.79	0.47
1:C:374:ILE:O	1:C:375:ALA:HB3	2.13	0.47
1:D:194:PRO:HA	1:D:197:TYR:CE1	2.49	0.47
1:A:320:GLN:NE2	1:A:348:THR:HB	2.29	0.47
1:A:250:PRO:HD2	1:A:343:LEU:HD13	1.96	0.47
1:D:219:LEU:CD1	1:D:298:ILE:HG12	2.45	0.47
1:A:219:LEU:CD1	1:A:298:ILE:HG12	2.45	0.47
1:C:94:GLY:HA2	1:C:119:PHE:CD2	2.50	0.47
1:B:146:SER:C	1:B:148:SER:H	2.17	0.47
1:B:94:GLY:HA2	1:B:119:PHE:CD2	2.50	0.47
1:C:282:CYS:HA	1:C:331:CYS:HA	1.97	0.47
1:A:249:LEU:HA	1:A:343:LEU:HD13	1.96	0.47
1:D:94:GLY:HA2	1:D:119:PHE:CD2	2.50	0.47
1:D:282:CYS:HA	1:D:331:CYS:HA	1.97	0.47
1:A:94:GLY:HA2	1:A:119:PHE:CD2	2.50	0.47
1:D:238:ALA:HA	1:D:343:LEU:O	2.15	0.47
1:C:320:GLN:NE2	1:C:348:THR:HB	2.29	0.47
1:A:221:ILE:HD11	1:A:257:VAL:HG22	1.96	0.47
1:B:250:PRO:HD2	1:B:343:LEU:HD13	1.96	0.47
1:C:250:PRO:HD2	1:C:343:LEU:HD13	1.96	0.47
1:B:323:MET:HE3	1:B:324:GLY:H	1.80	0.47
1:C:194:PRO:HA	1:C:197:TYR:CE1	2.49	0.46
1:D:254:PHE:CD2	1:D:338:PRO:HB3	2.51	0.46
1:A:282:CYS:HA	1:A:331:CYS:HA	1.97	0.46
1:C:238:ALA:HA	1:C:343:LEU:O	2.15	0.46
1:B:304:ASN:HD22	1:B:304:ASN:C	2.18	0.46
1:A:267:ILE:HB	1:A:268:PRO:CD	2.45	0.46
1:C:254:PHE:CD2	1:C:338:PRO:HB3	2.51	0.46
1:A:254:PHE:CD2	1:A:338:PRO:HB3	2.51	0.46
1:D:267:ILE:HB	1:D:268:PRO:CD	2.45	0.46
1:B:238:ALA:HA	1:B:343:LEU:O	2.15	0.46
1:B:219:LEU:CD1	1:B:298:ILE:HG12	2.45	0.46
1:C:248:ARG:HA	1:C:337:SER:O	2.16	0.46
1:B:170:MET:HE2	1:B:350:MET:HB3	1.98	0.46
1:B:316:GLN:N	1:B:316:GLN:OE1	2.48	0.46
1:C:316:GLN:OE1	1:C:316:GLN:N	2.48	0.46
1:A:146:SER:C	1:A:148:SER:H	2.17	0.46
1:B:248:ARG:HA	1:B:337:SER:O	2.16	0.46
1:A:304:ASN:HD22	1:A:304:ASN:C	2.18	0.46
1:C:267:ILE:HB	1:C:268:PRO:CD	2.45	0.46
1:D:173:ALA:HB1	1:D:374:ILE:HD11	1.98	0.46

Continued on next page...

Continued from previous page...

Atom-1	Atom-2	Interatomic distance (Å)	Clash overlap (Å)
1:B:267:ILE:HB	1:B:268:PRO:CD	2.45	0.46
1:B:248:ARG:NE	3:B:1011:HOH:O	2.42	0.46
1:B:254:PHE:CD2	1:B:338:PRO:HB3	2.51	0.46
1:D:248:ARG:HA	1:D:337:SER:O	2.16	0.46
1:C:210:TRP:CD1	1:C:210:TRP:N	2.83	0.46
1:C:128:GLY:HA3	1:D:323:MET:HE1	1.96	0.46
1:C:173:ALA:HB1	1:C:374:ILE:HD11	1.98	0.46
1:B:282:CYS:HA	1:B:331:CYS:HA	1.97	0.46
1:A:308:SER:HB3	1:A:388:THR:HG22	1.98	0.46
1:B:173:ALA:HB1	1:B:374:ILE:HD11	1.98	0.45
1:C:211:TYR:CB	1:C:239:ILE:HG21	2.46	0.45
1:D:210:TRP:CD1	1:D:210:TRP:N	2.84	0.45
1:D:304:ASN:C	1:D:304:ASN:HD22	2.18	0.45
1:A:238:ALA:HA	1:A:343:LEU:O	2.15	0.45
1:B:210:TRP:N	1:B:210:TRP:CD1	2.84	0.45
1:B:211:TYR:CB	1:B:239:ILE:HG21	2.46	0.45
1:C:304:ASN:HD22	1:C:304:ASN:C	2.18	0.45
1:B:170:MET:CE	1:B:350:MET:CB	2.95	0.45
1:D:211:TYR:CB	1:D:239:ILE:HG21	2.47	0.45
1:C:170:MET:CE	1:C:350:MET:CB	2.95	0.45
1:D:170:MET:HE2	1:D:350:MET:HB3	1.98	0.45
1:D:308:SER:HB3	1:D:388:THR:HG22	1.98	0.45
1:A:44:GLN:HB2	1:A:131:TRP:HA	1.99	0.45
1:D:316:GLN:N	1:D:316:GLN:OE1	2.48	0.45
1:A:316:GLN:OE1	1:A:316:GLN:N	2.48	0.45
1:A:211:TYR:CB	1:A:239:ILE:HG21	2.47	0.45
1:C:267:ILE:HB	1:C:268:PRO:HD3	1.99	0.45
1:A:248:ARG:HA	1:A:337:SER:O	2.16	0.45
1:B:308:SER:HB3	1:B:388:THR:HG22	1.98	0.45
1:D:267:ILE:HB	1:D:268:PRO:HD3	1.99	0.45
1:D:44:GLN:HB2	1:D:131:TRP:HA	1.99	0.45
1:B:235:ALA:HA	1:B:236:ASP:HA	1.48	0.45
1:A:392:ALA:O	1:A:393:SER:HB2	2.17	0.45
1:D:117:THR:HG21	3:D:1025:HOH:O	2.17	0.45
1:A:170:MET:CE	1:A:350:MET:CB	2.95	0.45
1:A:173:ALA:HB1	1:A:374:ILE:HD11	1.98	0.45
1:C:308:SER:HB3	1:C:388:THR:HG22	1.98	0.45
1:B:50:GLY:O	2:B:1002:DBO:H18	2.17	0.45
1:D:313:ILE:O	1:D:313:ILE:HG13	2.17	0.45
1:B:313:ILE:HG13	1:B:313:ILE:O	2.17	0.45
1:C:28:ARG:HB3	1:C:129:ILE:HG22	1.99	0.45

Continued on next page...

Continued from previous page...

Atom-1	Atom-2	Interatomic distance (Å)	Clash overlap (Å)
1:B:267:ILE:HB	1:B:268:PRO:HD3	1.99	0.44
1:C:50:GLY:O	2:C:1003:DBO:H18	2.17	0.44
1:D:50:GLY:O	2:D:1004:DBO:H18	2.17	0.44
1:A:117:THR:HG21	3:A:1019:HOH:O	2.17	0.44
1:D:63:TYR:CZ	1:D:127:PRO:HG3	2.51	0.44
1:C:63:TYR:CZ	1:C:127:PRO:HG3	2.51	0.44
1:D:28:ARG:HB3	1:D:129:ILE:HG22	2.00	0.44
1:A:50:GLY:O	2:A:1001:DBO:H18	2.17	0.44
1:C:117:THR:HG21	3:C:1022:HOH:O	2.17	0.44
1:B:117:THR:HG21	3:B:1022:HOH:O	2.17	0.44
1:D:170:MET:CE	1:D:350:MET:CB	2.95	0.44
1:A:210:TRP:CD1	1:A:210:TRP:N	2.84	0.44
1:A:28:ARG:HB3	1:A:129:ILE:HG22	1.99	0.44
1:C:44:GLN:HB2	1:C:131:TRP:HA	1.99	0.44
1:C:313:ILE:O	1:C:313:ILE:HG13	2.17	0.44
1:B:28:ARG:HB3	1:B:129:ILE:HG22	1.99	0.44
1:A:313:ILE:O	1:A:313:ILE:HG13	2.17	0.44
1:A:63:TYR:CZ	1:A:127:PRO:HG3	2.51	0.44
1:C:235:ALA:HA	1:C:236:ASP:HA	1.48	0.44
1:B:44:GLN:HB2	1:B:131:TRP:HA	1.99	0.44
1:C:392:ALA:O	1:C:393:SER:HB2	2.17	0.44
1:B:245:THR:HB	2:B:1002:DBO:H69	1.99	0.44
1:C:245:THR:HB	2:C:1003:DBO:H69	1.99	0.44
1:D:245:THR:HB	2:D:1004:DBO:H69	1.99	0.44
1:A:313:ILE:HG22	1:A:317:LEU:HD12	2.00	0.44
1:A:245:THR:HB	2:A:1001:DBO:H69	1.99	0.44
1:B:63:TYR:CZ	1:B:127:PRO:HG3	2.51	0.44
1:B:210:TRP:CG	1:B:211:TYR:N	2.86	0.44
1:A:83:VAL:CG2	1:A:145:PRO:HD3	2.48	0.44
1:B:33:GLU:OE1	1:B:42:LYS:HE3	2.18	0.43
1:A:249:LEU:HA	1:A:343:LEU:CD1	2.48	0.43
1:C:210:TRP:CG	1:C:211:TYR:N	2.86	0.43
1:B:107:PHE:N	1:B:107:PHE:CD1	2.86	0.43
1:B:83:VAL:CG2	1:B:145:PRO:HD3	2.48	0.43
1:A:267:ILE:HB	1:A:268:PRO:HD3	1.99	0.43
1:C:313:ILE:HG22	1:C:317:LEU:HD12	2.00	0.43
1:C:107:PHE:CD1	1:C:107:PHE:N	2.86	0.43
1:C:33:GLU:OE1	1:C:42:LYS:HE3	2.18	0.43
1:D:249:LEU:HA	1:D:343:LEU:CD1	2.48	0.43
1:D:392:ALA:O	1:D:393:SER:HB2	2.17	0.43
1:D:83:VAL:CG2	1:D:145:PRO:HD3	2.48	0.43

Continued on next page...

Continued from previous page...

Atom-1	Atom-2	Interatomic distance (Å)	Clash overlap (Å)
1:B:392:ALA:O	1:B:393:SER:HB2	2.17	0.43
1:A:170:MET:HE2	1:A:350:MET:HB3	2.00	0.43
1:C:170:MET:HE2	1:C:350:MET:HB3	1.99	0.43
1:C:83:VAL:CG2	1:C:145:PRO:HD3	2.48	0.43
1:D:210:TRP:CG	1:D:211:TYR:N	2.86	0.43
1:D:235:ALA:HA	1:D:236:ASP:HA	1.48	0.43
1:D:107:PHE:CD1	1:D:107:PHE:N	2.86	0.43
1:C:55:ALA:HB2	1:C:116:ALA:HB3	2.01	0.43
1:D:33:GLU:OE1	1:D:42:LYS:HE3	2.18	0.43
1:B:245:THR:O	1:B:347:ALA:HB3	2.19	0.43
1:D:60:PRO:HG3	1:D:67:TYR:CE2	2.54	0.43
1:A:33:GLU:OE1	1:A:42:LYS:HE3	2.18	0.43
1:C:249:LEU:HA	1:C:343:LEU:CD1	2.48	0.43
1:C:245:THR:O	1:C:347:ALA:HB3	2.19	0.43
1:D:335:GLY:O	1:D:348:THR:HG21	2.19	0.43
1:C:369:SER:HA	1:C:370:PRO:HD3	1.91	0.43
1:A:335:GLY:O	1:A:348:THR:HG21	2.19	0.43
1:B:369:SER:HA	1:B:370:PRO:HD3	1.91	0.43
1:B:55:ALA:HB2	1:B:116:ALA:HB3	2.01	0.43
1:B:84:THR:O	1:B:84:THR:HG23	2.19	0.43
1:C:248:ARG:NE	3:C:1011:HOH:O	2.42	0.42
1:B:335:GLY:O	1:B:348:THR:HG21	2.19	0.42
1:D:313:ILE:HG22	1:D:317:LEU:HD12	2.00	0.42
1:C:60:PRO:HG3	1:C:67:TYR:CE2	2.54	0.42
1:C:335:GLY:O	1:C:348:THR:HG21	2.19	0.42
1:C:84:THR:HG23	1:C:84:THR:O	2.19	0.42
1:A:107:PHE:N	1:A:107:PHE:CD1	2.86	0.42
1:B:249:LEU:HA	1:B:343:LEU:CD1	2.49	0.42
1:D:245:THR:O	1:D:347:ALA:HB3	2.19	0.42
1:A:142:LEU:HD12	1:A:210:TRP:O	2.20	0.42
1:D:84:THR:HG23	1:D:84:THR:O	2.19	0.42
1:A:210:TRP:CG	1:A:211:TYR:N	2.86	0.42
1:B:313:ILE:HG22	1:B:317:LEU:HD12	2.00	0.42
1:D:55:ALA:HB2	1:D:116:ALA:HB3	2.01	0.42
1:A:102:THR:O	1:A:104:PRO:HD3	2.19	0.42
1:B:60:PRO:HG3	1:B:67:TYR:CE2	2.54	0.42
1:A:84:THR:HG23	1:A:84:THR:O	2.19	0.42
1:C:102:THR:O	1:C:104:PRO:HD3	2.19	0.42
1:C:142:LEU:HD12	1:C:210:TRP:O	2.20	0.42
1:D:142:LEU:HD12	1:D:210:TRP:O	2.20	0.42
1:B:142:LEU:HD12	1:B:210:TRP:O	2.20	0.42

Continued on next page...

Continued from previous page...

Atom-1	Atom-2	Interatomic distance (Å)	Clash overlap (Å)
1:C:165:VAL:O	1:C:190:GLY:HA2	2.19	0.42
1:A:165:VAL:CG1	1:A:166:PHE:N	2.82	0.42
1:B:165:VAL:CG1	1:B:166:PHE:N	2.82	0.42
1:D:165:VAL:CG1	1:D:166:PHE:N	2.82	0.42
1:A:60:PRO:HG3	1:A:67:TYR:CE2	2.54	0.42
1:A:55:ALA:HB2	1:A:116:ALA:HB3	2.01	0.42
1:D:102:THR:O	1:D:104:PRO:HD3	2.19	0.42
1:B:304:ASN:ND2	1:B:304:ASN:C	2.73	0.42
1:C:165:VAL:CG1	1:C:166:PHE:N	2.82	0.42
1:A:245:THR:O	1:A:347:ALA:HB3	2.19	0.42
1:C:323:MET:HE3	1:C:324:GLY:H	1.85	0.42
1:A:165:VAL:O	1:A:190:GLY:HA2	2.19	0.42
1:A:210:TRP:H	1:A:210:TRP:HD1	1.68	0.42
1:C:323:MET:HE2	1:C:324:GLY:N	2.35	0.41
1:B:102:THR:O	1:B:104:PRO:HD3	2.19	0.41
1:A:323:MET:HE2	1:A:324:GLY:H	1.83	0.41
1:A:290:TRP:CE3	1:A:316:GLN:HG3	2.55	0.41
1:B:165:VAL:O	1:B:190:GLY:HA2	2.20	0.41
1:C:304:ASN:ND2	1:C:304:ASN:C	2.73	0.41
1:D:165:VAL:O	1:D:190:GLY:HA2	2.19	0.41
1:A:146:SER:O	1:A:148:SER:N	2.54	0.41
1:D:304:ASN:ND2	1:D:304:ASN:C	2.73	0.41
1:D:126:LEU:HB3	1:D:127:PRO:CD	2.51	0.41
1:A:126:LEU:HB3	1:A:127:PRO:CD	2.51	0.41
1:C:101:VAL:HG21	1:C:113:VAL:HG21	2.02	0.41
1:A:248:ARG:NE	3:A:1008:HOH:O	2.42	0.41
1:B:316:GLN:HB2	1:B:379:VAL:HG23	2.03	0.41
1:C:290:TRP:CE3	1:C:316:GLN:HG3	2.55	0.41
1:B:290:TRP:CE3	1:B:316:GLN:HG3	2.55	0.41
1:D:290:TRP:CE3	1:D:316:GLN:HG3	2.55	0.41
1:C:126:LEU:HB3	1:C:127:PRO:CD	2.51	0.41
1:A:304:ASN:ND2	1:A:304:ASN:C	2.73	0.41
1:A:84:THR:HB	1:A:93:THR:HG23	2.03	0.41
1:A:101:VAL:HG21	1:A:113:VAL:HG21	2.02	0.41
1:D:146:SER:O	1:D:148:SER:N	2.54	0.40
1:A:215:GLU:O	1:A:215:GLU:HG3	2.22	0.40
1:B:126:LEU:HB3	1:B:127:PRO:CD	2.51	0.40
1:D:210:TRP:HD1	1:D:210:TRP:H	1.68	0.40
1:B:146:SER:O	1:B:148:SER:N	2.54	0.40
1:B:84:THR:HB	1:B:93:THR:HG23	2.03	0.40
1:C:84:THR:HB	1:C:93:THR:HG23	2.03	0.40

Continued on next page...

Continued from previous page...

Atom-1	Atom-2	Interatomic distance (Å)	Clash overlap (Å)
1:C:215:GLU:HG3	1:C:215:GLU:O	2.21	0.40
1:B:101:VAL:HG21	1:B:113:VAL:HG21	2.02	0.40
1:C:210:TRP:H	1:C:210:TRP:HD1	1.68	0.40
1:C:146:SER:O	1:C:148:SER:N	2.54	0.40
1:D:101:VAL:HG21	1:D:113:VAL:HG21	2.02	0.40
1:B:88:THR:HB	2:B:1002:DBO:O46	2.21	0.40
1:B:210:TRP:H	1:B:210:TRP:HD1	1.68	0.40
1:A:146:SER:C	1:A:148:SER:N	2.74	0.40

All (2) symmetry-related close contacts are listed below. The label for Atom-2 includes the symmetry operator and encoded unit-cell translations to be applied.

Atom-1	Atom-2	Interatomic distance (Å)	Clash overlap (Å)
1:A:42:LYS:N	1:C:77:ARG:NH1[9_654]	1.96	0.24
1:B:110:SER:O	1:D:105:LYS:CE[9_654]	2.10	0.10

5.3 Torsion angles [i](#)

5.3.1 Protein backbone [i](#)

In the following table, the Percentiles column shows the percent Ramachandran outliers of the chain as a percentile score with respect to all X-ray entries followed by that with respect to entries of similar resolution.

The Analysed column shows the number of residues for which the backbone conformation was analysed, and the total number of residues.

Mol	Chain	Analysed	Favoured	Allowed	Outliers	Percentiles	
1	A	370/383 (97%)	331 (90%)	26 (7%)	13 (4%)	4	24
1	B	370/383 (97%)	331 (90%)	26 (7%)	13 (4%)	4	24
1	C	370/383 (97%)	331 (90%)	26 (7%)	13 (4%)	4	24
1	D	370/383 (97%)	331 (90%)	26 (7%)	13 (4%)	4	24
All	All	1480/1532 (97%)	1324 (90%)	104 (7%)	52 (4%)	4	24

All (52) Ramachandran outliers are listed below:

Mol	Chain	Res	Type
1	A	265	SER

Continued on next page...

Continued from previous page...

Mol	Chain	Res	Type
1	A	342	ALA
1	A	390	ASP
1	A	392	ALA
1	A	393	SER
1	B	265	SER
1	B	342	ALA
1	B	390	ASP
1	B	392	ALA
1	B	393	SER
1	C	265	SER
1	C	342	ALA
1	C	390	ASP
1	C	392	ALA
1	C	393	SER
1	D	265	SER
1	D	342	ALA
1	D	390	ASP
1	D	392	ALA
1	D	393	SER
1	A	305	SER
1	B	305	SER
1	C	305	SER
1	D	305	SER
1	A	62	SER
1	A	147	SER
1	A	251	GLN
1	A	325	ALA
1	A	389	GLU
1	B	62	SER
1	B	147	SER
1	B	251	GLN
1	B	325	ALA
1	B	389	GLU
1	C	62	SER
1	C	147	SER
1	C	251	GLN
1	C	325	ALA
1	C	389	GLU
1	D	62	SER
1	D	147	SER
1	D	251	GLN
1	D	325	ALA

Continued on next page...

Continued from previous page...

Mol	Chain	Res	Type
1	D	389	GLU
1	A	104	PRO
1	B	104	PRO
1	C	104	PRO
1	D	104	PRO
1	A	324	GLY
1	B	324	GLY
1	C	324	GLY
1	D	324	GLY

5.3.2 Protein sidechains ⓘ

In the following table, the Percentiles column shows the percent sidechain outliers of the chain as a percentile score with respect to all X-ray entries followed by that with respect to entries of similar resolution.

The Analysed column shows the number of residues for which the sidechain conformation was analysed, and the total number of residues.

Mol	Chain	Analysed	Rotameric	Outliers	Percentiles	
1	A	313/318 (98%)	301 (96%)	12 (4%)	40	76
1	B	313/318 (98%)	301 (96%)	12 (4%)	40	76
1	C	313/318 (98%)	301 (96%)	12 (4%)	40	76
1	D	313/318 (98%)	301 (96%)	12 (4%)	40	76
All	All	1252/1272 (98%)	1204 (96%)	48 (4%)	40	76

All (48) residues with a non-rotameric sidechain are listed below:

Mol	Chain	Res	Type
1	A	79	LYS
1	A	111	PHE
1	A	120	GLU
1	A	141	THR
1	A	186	SER
1	A	201	ILE
1	A	210	TRP
1	A	267	ILE
1	A	304	ASN
1	A	330	GLU
1	A	348	THR
1	A	373	GLU

Continued on next page...

Continued from previous page...

Mol	Chain	Res	Type
1	B	79	LYS
1	B	111	PHE
1	B	120	GLU
1	B	141	THR
1	B	186	SER
1	B	201	ILE
1	B	210	TRP
1	B	267	ILE
1	B	304	ASN
1	B	330	GLU
1	B	348	THR
1	B	373	GLU
1	C	79	LYS
1	C	111	PHE
1	C	120	GLU
1	C	141	THR
1	C	186	SER
1	C	201	ILE
1	C	210	TRP
1	C	267	ILE
1	C	304	ASN
1	C	330	GLU
1	C	348	THR
1	C	373	GLU
1	D	79	LYS
1	D	111	PHE
1	D	120	GLU
1	D	141	THR
1	D	186	SER
1	D	201	ILE
1	D	210	TRP
1	D	267	ILE
1	D	304	ASN
1	D	330	GLU
1	D	348	THR
1	D	373	GLU

Some sidechains can be flipped to improve hydrogen bonding and reduce clashes. All (8) such sidechains are listed below:

Mol	Chain	Res	Type
1	A	304	ASN
1	A	341	ASN

Continued on next page...

Continued from previous page...

Mol	Chain	Res	Type
1	B	304	ASN
1	B	341	ASN
1	C	304	ASN
1	C	341	ASN
1	D	304	ASN
1	D	341	ASN

5.3.3 RNA ⓘ

There are no RNA molecules in this entry.

5.4 Non-standard residues in protein, DNA, RNA chains ⓘ

There are no non-standard protein/DNA/RNA residues in this entry.

5.5 Carbohydrates ⓘ

There are no carbohydrates in this entry.

5.6 Ligand geometry ⓘ

4 ligands are modelled in this entry.

In the following table, the Counts columns list the number of bonds (or angles) for which Mogul statistics could be retrieved, the number of bonds (or angles) that are observed in the model and the number of bonds (or angles) that are defined in the chemical component dictionary. The Link column lists molecule types, if any, to which the group is linked. The Z score for a bond length (or angle) is the number of standard deviations the observed value is removed from the expected value. A bond length (or angle) with $|Z| > 2$ is considered an outlier worth inspection. RMSZ is the root-mean-square of all Z scores of the bond lengths (or angles).

Mol	Type	Chain	Res	Link	Bond lengths			Bond angles		
					Counts	RMSZ	$\# Z > 2$	Counts	RMSZ	$\# Z > 2$
2	DBO	A	1001	-	40,42,42	5.08	30 (75%)	50,57,57	1.44	3 (6%)
2	DBO	B	1002	-	40,42,42	5.09	29 (72%)	50,57,57	1.44	3 (6%)
2	DBO	C	1003	-	40,42,42	5.08	29 (72%)	50,57,57	1.44	3 (6%)
2	DBO	D	1004	-	40,42,42	5.08	29 (72%)	50,57,57	1.44	3 (6%)

In the following table, the Chirals column lists the number of chiral outliers, the number of chiral centers analysed, the number of these observed in the model and the number defined in the chemical

component dictionary. Similar counts are reported in the Torsion and Rings columns. '-' means no outliers of that kind were identified.

Mol	Type	Chain	Res	Link	Chirals	Torsions	Rings
2	DBO	A	1001	-	-	0/18/34/34	0/4/5/5
2	DBO	B	1002	-	-	0/18/34/34	0/4/5/5
2	DBO	C	1003	-	-	0/18/34/34	0/4/5/5
2	DBO	D	1004	-	-	0/18/34/34	0/4/5/5

All (117) bond length outliers are listed below:

Mol	Chain	Res	Type	Atoms	Z	Observed(Å)	Ideal(Å)
2	C	1003	DBO	O7-C5	-2.47	1.37	1.43
2	B	1002	DBO	O7-C5	-2.44	1.37	1.43
2	A	1001	DBO	O7-C5	-2.44	1.37	1.43
2	D	1004	DBO	O7-C5	-2.41	1.37	1.43
2	A	1001	DBO	C14-C17	2.01	1.56	1.51
2	C	1003	DBO	C50-C48	2.34	1.50	1.46
2	D	1004	DBO	C50-C48	2.36	1.50	1.46
2	B	1002	DBO	C50-C48	2.38	1.50	1.46
2	A	1001	DBO	C50-C48	2.39	1.50	1.46
2	D	1004	DBO	C58-C50	2.44	1.45	1.41
2	A	1001	DBO	C58-C50	2.47	1.45	1.41
2	B	1002	DBO	C58-C50	2.48	1.45	1.41
2	C	1003	DBO	C58-C50	2.48	1.45	1.41
2	C	1003	DBO	C3-N1	2.50	1.50	1.46
2	B	1002	DBO	C3-N1	2.50	1.50	1.46
2	A	1001	DBO	C3-N1	2.51	1.50	1.46
2	D	1004	DBO	C3-N1	2.55	1.50	1.46
2	D	1004	DBO	C45-N1	2.96	1.40	1.34
2	B	1002	DBO	C45-N1	2.97	1.40	1.34
2	A	1001	DBO	C45-N1	2.97	1.40	1.34
2	C	1003	DBO	C45-N1	3.00	1.40	1.34
2	C	1003	DBO	C52-C51	3.42	1.46	1.39
2	A	1001	DBO	C52-C51	3.45	1.47	1.39
2	B	1002	DBO	C52-C51	3.46	1.47	1.39
2	D	1004	DBO	C52-C51	3.47	1.47	1.39
2	D	1004	DBO	C54-C52	3.92	1.47	1.38
2	B	1002	DBO	C41-C43	3.93	1.47	1.38
2	A	1001	DBO	C41-C43	3.94	1.47	1.38
2	D	1004	DBO	C41-C43	3.96	1.47	1.38
2	C	1003	DBO	C54-C52	3.97	1.47	1.38
2	A	1001	DBO	C54-C52	3.97	1.47	1.38
2	C	1003	DBO	C41-C43	3.98	1.47	1.38
2	B	1002	DBO	C54-C52	3.98	1.47	1.38

Continued on next page...

Continued from previous page...

Mol	Chain	Res	Type	Atoms	Z	Observed(Å)	Ideal(Å)
2	C	1003	DBO	C41-C39	4.71	1.50	1.38
2	B	1002	DBO	C41-C39	4.73	1.50	1.38
2	A	1001	DBO	C41-C39	4.73	1.50	1.38
2	D	1004	DBO	C41-C39	4.75	1.50	1.38
2	D	1004	DBO	C21-C20	5.12	1.53	1.38
2	B	1002	DBO	C21-C20	5.12	1.53	1.38
2	C	1003	DBO	C21-C20	5.13	1.53	1.38
2	B	1002	DBO	C69-C61	5.13	1.50	1.39
2	A	1001	DBO	C21-C20	5.14	1.53	1.38
2	A	1001	DBO	C69-C61	5.16	1.50	1.39
2	D	1004	DBO	C69-C61	5.17	1.50	1.39
2	C	1003	DBO	C56-C58	5.18	1.49	1.38
2	D	1004	DBO	C56-C58	5.18	1.49	1.38
2	A	1001	DBO	C39-C37	5.19	1.51	1.38
2	A	1001	DBO	C56-C58	5.20	1.49	1.38
2	B	1002	DBO	C56-C58	5.20	1.49	1.38
2	C	1003	DBO	C69-C61	5.20	1.50	1.39
2	D	1004	DBO	C39-C37	5.20	1.51	1.38
2	C	1003	DBO	C39-C37	5.21	1.51	1.38
2	B	1002	DBO	C39-C37	5.21	1.51	1.38
2	D	1004	DBO	C35-C34	5.23	1.49	1.38
2	C	1003	DBO	C35-C34	5.25	1.50	1.38
2	A	1001	DBO	C35-C34	5.25	1.50	1.38
2	B	1002	DBO	C56-C54	5.25	1.51	1.38
2	B	1002	DBO	C35-C34	5.26	1.50	1.38
2	C	1003	DBO	C56-C54	5.28	1.51	1.38
2	A	1001	DBO	C56-C54	5.28	1.51	1.38
2	D	1004	DBO	C56-C54	5.29	1.51	1.38
2	C	1003	DBO	C67-C65	5.31	1.51	1.38
2	A	1001	DBO	C67-C65	5.31	1.51	1.38
2	B	1002	DBO	C67-C65	5.32	1.51	1.38
2	D	1004	DBO	C67-C65	5.33	1.51	1.38
2	D	1004	DBO	C67-C69	5.60	1.50	1.38
2	C	1003	DBO	C67-C69	5.61	1.50	1.38
2	A	1001	DBO	C67-C69	5.63	1.50	1.38
2	B	1002	DBO	C67-C69	5.64	1.50	1.38
2	A	1001	DBO	C25-C17	6.27	1.52	1.38
2	D	1004	DBO	C25-C17	6.28	1.52	1.38
2	C	1003	DBO	C25-C17	6.29	1.52	1.38
2	B	1002	DBO	C25-C17	6.31	1.52	1.38
2	D	1004	DBO	C23-C25	6.43	1.52	1.38
2	A	1001	DBO	C23-C25	6.47	1.52	1.38

Continued on next page...

Continued from previous page...

Mol	Chain	Res	Type	Atoms	Z	Observed(Å)	Ideal(Å)
2	B	1002	DBO	C23-C25	6.49	1.52	1.38
2	C	1003	DBO	C23-C25	6.50	1.52	1.38
2	C	1003	DBO	C37-C35	6.67	1.52	1.38
2	B	1002	DBO	C37-C35	6.67	1.52	1.38
2	A	1001	DBO	C37-C35	6.68	1.52	1.38
2	C	1003	DBO	C63-C62	6.69	1.51	1.39
2	D	1004	DBO	C37-C35	6.69	1.52	1.38
2	B	1002	DBO	C50-C51	6.70	1.54	1.41
2	B	1002	DBO	C63-C62	6.71	1.51	1.39
2	D	1004	DBO	C50-C51	6.73	1.54	1.41
2	A	1001	DBO	C50-C51	6.74	1.54	1.41
2	D	1004	DBO	C63-C62	6.74	1.51	1.39
2	A	1001	DBO	C63-C62	6.74	1.51	1.39
2	C	1003	DBO	C50-C51	6.76	1.54	1.41
2	C	1003	DBO	C43-C34	6.86	1.53	1.38
2	D	1004	DBO	C43-C34	6.88	1.53	1.38
2	A	1001	DBO	C43-C34	6.89	1.53	1.38
2	B	1002	DBO	C43-C34	6.89	1.53	1.38
2	A	1001	DBO	C65-C63	6.96	1.53	1.38
2	C	1003	DBO	C65-C63	6.96	1.53	1.38
2	B	1002	DBO	C65-C63	6.98	1.53	1.38
2	D	1004	DBO	C65-C63	6.99	1.53	1.38
2	C	1003	DBO	C62-C61	7.03	1.53	1.40
2	A	1001	DBO	C62-C61	7.07	1.54	1.40
2	B	1002	DBO	C62-C61	7.07	1.54	1.40
2	D	1004	DBO	C62-C61	7.09	1.54	1.40
2	B	1002	DBO	C23-C21	7.28	1.53	1.38
2	C	1003	DBO	C23-C21	7.31	1.53	1.38
2	A	1001	DBO	C23-C21	7.32	1.54	1.38
2	D	1004	DBO	C23-C21	7.34	1.54	1.38
2	C	1003	DBO	C18-C20	7.66	1.52	1.38
2	B	1002	DBO	C18-C20	7.67	1.52	1.38
2	A	1001	DBO	C18-C20	7.68	1.52	1.38
2	D	1004	DBO	C18-C20	7.74	1.52	1.38
2	D	1004	DBO	C18-C17	8.16	1.53	1.39
2	C	1003	DBO	C18-C17	8.17	1.53	1.39
2	A	1001	DBO	C18-C17	8.18	1.53	1.39
2	B	1002	DBO	C18-C17	8.21	1.53	1.39
2	D	1004	DBO	C62-C47	12.46	1.62	1.48
2	A	1001	DBO	C62-C47	12.46	1.62	1.48
2	B	1002	DBO	C62-C47	12.53	1.62	1.48
2	C	1003	DBO	C62-C47	12.54	1.62	1.48

All (12) bond angle outliers are listed below:

Mol	Chain	Res	Type	Atoms	Z	Observed(°)	Ideal(°)
2	D	1004	DBO	C31-C3-N1	-5.14	104.52	110.14
2	B	1002	DBO	C31-C3-N1	-5.12	104.54	110.14
2	C	1003	DBO	C31-C3-N1	-5.11	104.55	110.14
2	A	1001	DBO	C31-C3-N1	-5.10	104.57	110.14
2	D	1004	DBO	O46-C45-C47	-4.59	115.49	122.20
2	A	1001	DBO	O46-C45-C47	-4.59	115.49	122.20
2	B	1002	DBO	O46-C45-C47	-4.59	115.50	122.20
2	C	1003	DBO	O46-C45-C47	-4.58	115.51	122.20
2	C	1003	DBO	C47-C45-N1	3.88	120.68	116.04
2	D	1004	DBO	C47-C45-N1	3.88	120.68	116.04
2	A	1001	DBO	C47-C45-N1	3.89	120.69	116.04
2	B	1002	DBO	C47-C45-N1	3.89	120.69	116.04

There are no chirality outliers.

There are no torsion outliers.

There are no ring outliers.

4 monomers are involved in 13 short contacts:

Mol	Chain	Res	Type	Clashes	Symm-Clashes
2	A	1001	DBO	3	0
2	B	1002	DBO	4	0
2	C	1003	DBO	3	0
2	D	1004	DBO	3	0

5.7 Other polymers [i](#)

There are no such residues in this entry.

5.8 Polymer linkage issues [i](#)

There are no chain breaks in this entry.

6 Fit of model and data ⓘ

6.1 Protein, DNA and RNA chains ⓘ

In the following table, the column labelled ‘#RSRZ> 2’ contains the number (and percentage) of RSRZ outliers, followed by percent RSRZ outliers for the chain as percentile scores relative to all X-ray entries and entries of similar resolution. The OWAB column contains the minimum, median, 95th percentile and maximum values of the occupancy-weighted average B-factor per residue. The column labelled ‘Q< 0.9’ lists the number of (and percentage) of residues with an average occupancy less than 0.9.

Mol	Chain	Analysed	<RSRZ>	#RSRZ>2	OWAB(Å ²)	Q<0.9
1	A	374/383 (97%)	-0.48	4 (1%) 82 66	12, 21, 62, 70	0
1	B	374/383 (97%)	-0.44	2 (0%) 91 83	12, 21, 62, 70	0
1	C	374/383 (97%)	-0.48	2 (0%) 91 83	12, 21, 62, 70	0
1	D	374/383 (97%)	-0.46	7 (1%) 70 48	12, 21, 62, 70	0
All	All	1496/1532 (97%)	-0.47	15 (1%) 84 69	12, 21, 63, 70	0

All (15) RSRZ outliers are listed below:

Mol	Chain	Res	Type	RSRZ
1	B	398	ALA	4.4
1	A	398	ALA	4.3
1	C	398	ALA	4.2
1	A	266	LEU	4.0
1	D	398	ALA	3.5
1	C	266	LEU	3.5
1	D	108	ASN	3.4
1	D	389	GLU	3.1
1	D	266	LEU	3.0
1	B	266	LEU	2.9
1	D	267	ILE	2.8
1	A	267	ILE	2.5
1	A	269	GLU	2.2
1	D	105	LYS	2.2
1	D	173	ALA	2.1

6.2 Non-standard residues in protein, DNA, RNA chains ⓘ

There are no non-standard protein/DNA/RNA residues in this entry.

6.3 Carbohydrates [i](#)

There are no carbohydrates in this entry.

6.4 Ligands [i](#)

In the following table, the Atoms column lists the number of modelled atoms in the group and the number defined in the chemical component dictionary. LLDF column lists the quality of electron density of the group with respect to its neighbouring residues in protein, DNA or RNA chains. The B-factors column lists the minimum, median, 95th percentile and maximum values of B factors of atoms in the group. The column labelled 'Q< 0.9' lists the number of atoms with occupancy less than 0.9.

Mol	Type	Chain	Res	Atoms	RSCC	RSR	LLDF	B-factors(\AA^2)	Q<0.9
2	DBO	B	1002	38/38	0.95	0.20	1.28	12,12,12,12	0
2	DBO	A	1001	38/38	0.93	0.21	1.11	12,12,12,12	0
2	DBO	C	1003	38/38	0.95	0.20	0.98	12,12,12,12	0
2	DBO	D	1004	38/38	0.95	0.20	0.55	12,12,12,12	0

6.5 Other polymers [i](#)

There are no such residues in this entry.