



Full wwPDB X-ray Structure Validation Report ⓘ

Feb 1, 2016 – 01:56 AM GMT

PDB ID : 2EXC
Title : Inhibitor complex of JNK3
Authors : Xue, Y.
Deposited on : 2005-11-08
Resolution : 2.75 Å(reported)

This is a Full wwPDB X-ray Structure Validation Report for a publicly released PDB entry.
We welcome your comments at validation@mail.wwpdb.org
A user guide is available at
<http://wwpdb.org/validation/2016/XrayValidationReportHelp>
with specific help available everywhere you see the ⓘ symbol.

The following versions of software and data (see [references ⓘ](#)) were used in the production of this report:

MolProbity : 4.02b-467
Mogul : 1.7 (RC4), CSD as536be (2015)
Xtriage (Phenix) : **NOT EXECUTED**
EDS : **NOT EXECUTED**
Percentile statistics : 20151230.v01 (using entries in the PDB archive December 30th 2015)
Ideal geometry (proteins) : Engh & Huber (2001)
Ideal geometry (DNA, RNA) : Parkinson et al. (1996)
Validation Pipeline (wwPDB-VP) : trunk26865

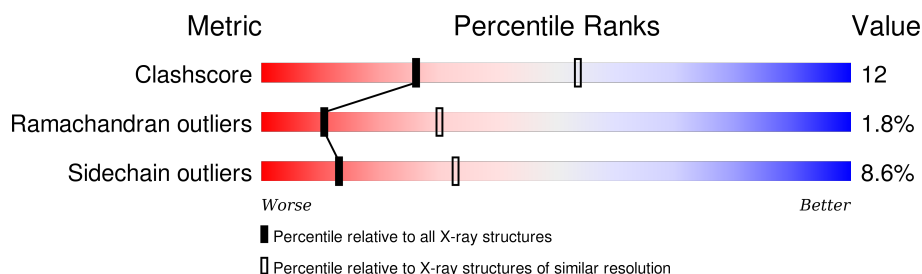
1 Overall quality at a glance

The following experimental techniques were used to determine the structure:

X-RAY DIFFRACTION

The reported resolution of this entry is 2.75 Å.

Percentile scores (ranging between 0-100) for global validation metrics of the entry are shown in the following graphic. The table shows the number of entries on which the scores are based.



Metric	Whole archive (#Entries)	Similar resolution (#Entries, resolution range(Å))
Clashscore	102246	3829 (2.80-2.72)
Ramachandran outliers	100387	3767 (2.80-2.72)
Sidechain outliers	100360	3770 (2.80-2.72)

The table below summarises the geometric issues observed across the polymeric chains and their fit to the electron density. The red, orange, yellow and green segments on the lower bar indicate the fraction of residues that contain outliers for ≥ 3 , 2, 1 and 0 types of geometric quality criteria. A grey segment represents the fraction of residues that are not modelled. The numeric value for each fraction is indicated below the corresponding segment, with a dot representing fractions $\leq 5\%$. The upper red bar (where present) indicates the fraction of residues that have poor fit to the electron density. The numeric value is given above the bar.

Note EDS was not executed.

Mol	Chain	Length	Quality of chain
1	X	356	

2 Entry composition [i](#)

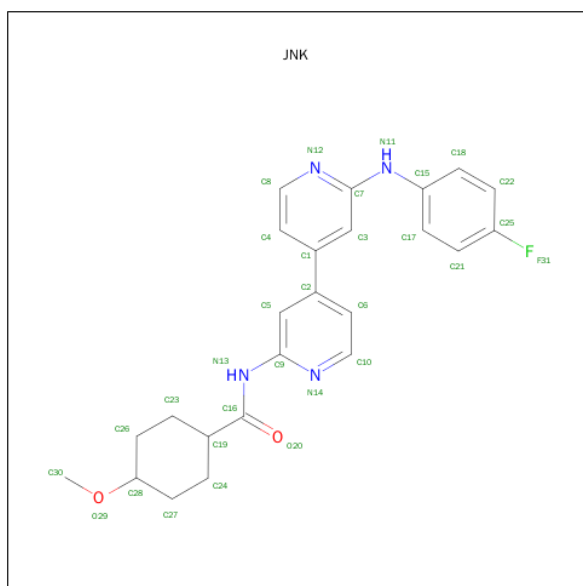
There are 3 unique types of molecules in this entry. The entry contains 2840 atoms, of which 0 are hydrogens and 0 are deuteriums.

In the tables below, the ZeroOcc column contains the number of atoms modelled with zero occupancy, the AltConf column contains the number of residues with at least one atom in alternate conformation and the Trace column contains the number of residues modelled with at most 2 atoms.

- Molecule 1 is a protein called Mitogen-activated protein kinase 10.

Mol	Chain	Residues	Atoms					ZeroOcc	AltConf	Trace
1	X	335	Total	C	N	O	S	0	0	0
			2724	1748	463	494	19			

- Molecule 2 is N-{2'-[(4-FLUOROPHENYL)AMINO]-4,4'-BIPYRIDIN-2-YL}-4-METHOXYCYCLOHEXANECARBOXAMIDE (three-letter code: JNK) (formula: C₂₄H₂₅FN₄O₂).



Mol	Chain	Residues	Atoms					ZeroOcc	AltConf
2	X	1	Total	C	F	N	O	0	0
			31	24	1	4	2		

- Molecule 3 is water.

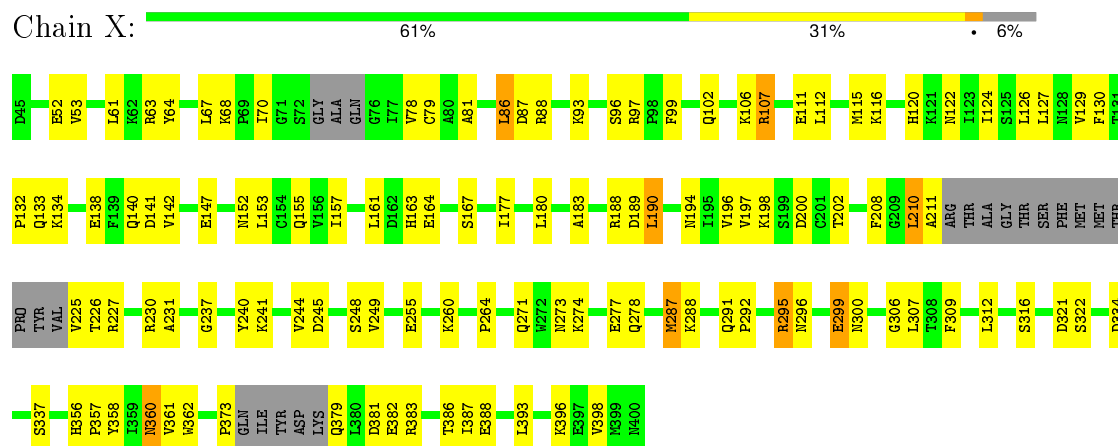
Mol	Chain	Residues	Atoms		ZeroOcc	AltConf
3	X	85	Total	O	0	0
			85	85		

3 Residue-property plots

These plots are drawn for all protein, RNA and DNA chains in the entry. The first graphic for a chain summarises the proportions of errors displayed in the second graphic. The second graphic shows the sequence view annotated by issues in geometry and electron density. Residues are color-coded according to the number of geometric quality criteria for which they contain at least one outlier: green = 0, yellow = 1, orange = 2 and red = 3 or more. A red dot above a residue indicates a poor fit to the electron density ($RSRZ > 2$). Stretches of 2 or more consecutive residues without any outlier are shown as a green connector. Residues present in the sample, but not in the model, are shown in grey.

Note EDS was not executed.

- Molecule 1: Mitogen-activated protein kinase 10



4 Data and refinement statistics

Xtriage (Phenix) and EDS were not executed - this section will therefore be incomplete.

Property	Value	Source
Space group	P 21 21 21	Depositor
Cell constants a, b, c, α , β , γ	49.58 Å 72.23 Å 106.16 Å 90.00° 90.00° 90.00°	Depositor
Resolution (Å)	59.76 – 2.75	Depositor
% Data completeness (in resolution range)	97.7 (59.76-2.75)	Depositor
R_{merge}	0.12	Depositor
R_{sym}	0.12	Depositor
Refinement program	REFMAC 5.2.0019	Depositor
R, R_{free}	0.209 , 0.314	Depositor
Estimated twinning fraction	No twinning to report.	Xtriage
Total number of atoms	2840	wwPDB-VP
Average B, all atoms (Å ²)	45.0	wwPDB-VP

5 Model quality [i](#)

5.1 Standard geometry [i](#)

Bond lengths and bond angles in the following residue types are not validated in this section: JNK

The Z score for a bond length (or angle) is the number of standard deviations the observed value is removed from the expected value. A bond length (or angle) with $|Z| > 5$ is considered an outlier worth inspection. RMSZ is the root-mean-square of all Z scores of the bond lengths (or angles).

Mol	Chain	Bond lengths		Bond angles	
		RMSZ	$\# Z > 5$	RMSZ	$\# Z > 5$
1	X	0.63	0/2784	0.75	1/3766 (0.0%)

There are no bond length outliers.

All (1) bond angle outliers are listed below:

Mol	Chain	Res	Type	Atoms	Z	Observed($^{\circ}$)	Ideal($^{\circ}$)
1	X	210	LEU	CA-CB-CG	5.25	127.38	115.30

There are no chirality outliers.

There are no planarity outliers.

5.2 Too-close contacts [i](#)

In the following table, the Non-H and H(model) columns list the number of non-hydrogen atoms and hydrogen atoms in the chain respectively. The H(added) column lists the number of hydrogen atoms added and optimized by MolProbity. The Clashes column lists the number of clashes within the asymmetric unit, whereas Symm-Clashes lists symmetry related clashes.

Mol	Chain	Non-H	H(model)	H(added)	Clashes	Symm-Clashes
1	X	2724	0	2741	67	0
2	X	31	0	25	1	0
3	X	85	0	0	4	0
All	All	2840	0	2766	68	0

The all-atom clashscore is defined as the number of clashes found per 1000 atoms (including hydrogen atoms). The all-atom clashscore for this structure is 12.

All (68) close contacts within the same asymmetric unit are listed below, sorted by their clash magnitude.

Atom-1	Atom-2	Interatomic distance (Å)	Clash overlap (Å)
1:X:102:GLN:O	1:X:106:LYS:HG3	1.61	0.98
1:X:127:LEU:HD21	3:X:585:HOH:O	1.74	0.87
1:X:68:LYS:O	1:X:79:CYS:HB2	1.84	0.76
1:X:273:ASN:O	1:X:277:GLU:HB2	1.87	0.74
1:X:356:HIS:HD2	1:X:358:TYR:H	1.37	0.73
1:X:189:ASP:HB2	1:X:210:LEU:HD13	1.71	0.72
1:X:53:VAL:HG11	1:X:79:CYS:SG	2.31	0.71
1:X:183:ALA:HB2	1:X:373:PRO:HG2	1.73	0.69
1:X:309:PHE:CZ	1:X:337:SER:HA	2.33	0.64
1:X:107:ARG:O	1:X:111:GLU:HG3	1.99	0.62
1:X:264:PRO:O	1:X:274:LYS:HE2	2.00	0.61
1:X:120:HIS:HD2	1:X:122:ASN:H	1.49	0.61
2:X:600:JNK:O20	2:X:600:JNK:H5	2.00	0.60
1:X:70:ILE:HG12	1:X:79:CYS:HA	1.84	0.60
1:X:291:GLN:HE21	1:X:292:PRO:HD2	1.68	0.59
1:X:97:ARG:NH1	1:X:99:PHE:HE1	2.01	0.58
1:X:133:GLN:HG2	1:X:138:GLU:O	2.03	0.57
1:X:115:MET:HG3	1:X:208:PHE:HE1	1.69	0.56
1:X:163:HIS:O	1:X:167:SER:HB3	2.05	0.55
1:X:126:LEU:HD21	1:X:129:VAL:CG2	2.38	0.53
1:X:334:ASP:OD2	1:X:356:HIS:HE1	1.91	0.53
1:X:67:LEU:HD22	1:X:81:ALA:HB2	1.91	0.52
1:X:255:GLU:HG3	1:X:260:LYS:O	2.10	0.51
1:X:357:PRO:HA	1:X:360:ASN:OD1	2.10	0.51
1:X:61:LEU:HD12	1:X:64:TYR:HE2	1.75	0.51
1:X:164:GLU:HG2	1:X:362:TRP:CZ2	2.45	0.51
1:X:225:VAL:O	1:X:227:ARG:HG3	2.11	0.51
1:X:393:LEU:O	1:X:396:LYS:HG3	2.12	0.50
1:X:287:MET:O	1:X:295:ARG:HG3	2.12	0.50
1:X:164:GLU:HG2	1:X:362:TRP:HZ2	1.77	0.49
1:X:177:ILE:HD11	1:X:190:LEU:CD1	2.42	0.49
1:X:231:ALA:HB3	1:X:244:VAL:HG23	1.93	0.49
1:X:152:ASN:ND2	1:X:155:GLN:OE1	2.45	0.49
1:X:198:LYS:HE3	1:X:202:THR:OG1	2.12	0.49
1:X:112:LEU:O	1:X:116:LYS:HG3	2.12	0.49
1:X:188:ARG:HB3	1:X:210:LEU:HD22	1.95	0.48
1:X:188:ARG:HD2	1:X:240:TYR:CE1	2.49	0.47
1:X:142:VAL:HG22	1:X:398:VAL:HG21	1.97	0.47
1:X:133:GLN:NE2	1:X:141:ASP:H	2.12	0.47
1:X:211:ALA:HB2	3:X:573:HOH:O	2.14	0.47
1:X:227:ARG:HG2	1:X:230:ARG:CZ	2.45	0.47
1:X:61:LEU:HD12	1:X:64:TYR:CE2	2.50	0.47

Continued on next page...

Continued from previous page...

Atom-1	Atom-2	Interatomic distance (Å)	Clash overlap (Å)
1:X:309:PHE:CE2	1:X:337:SER:HA	2.50	0.46
1:X:78:VAL:HG22	1:X:93:LYS:HG3	1.98	0.46
1:X:133:GLN:HE21	1:X:140:GLN:H	1.64	0.45
1:X:157:ILE:HG21	1:X:255:GLU:OE2	2.15	0.45
1:X:97:ARG:NH1	1:X:99:PHE:CE1	2.84	0.45
1:X:132:PRO:HG2	1:X:133:GLN:OE1	2.17	0.45
1:X:194:ASN:HB2	3:X:515:HOH:O	2.17	0.45
1:X:120:HIS:CD2	1:X:122:ASN:H	2.33	0.45
1:X:96:SER:O	1:X:97:ARG:C	2.55	0.45
1:X:163:HIS:O	1:X:167:SER:CB	2.65	0.44
1:X:130:PHE:HA	3:X:517:HOH:O	2.17	0.44
1:X:67:LEU:CD2	1:X:81:ALA:HB2	2.48	0.44
1:X:295:ARG:HD3	1:X:299:GLU:OE1	2.19	0.43
1:X:63:ARG:NH2	1:X:86:LEU:HD13	2.33	0.43
1:X:183:ALA:CB	1:X:373:PRO:HG2	2.46	0.42
1:X:356:HIS:CD2	1:X:358:TYR:H	2.25	0.41
1:X:200:ASP:OD1	1:X:200:ASP:C	2.59	0.41
1:X:321:ASP:OD1	1:X:322:SER:N	2.51	0.41
1:X:86:LEU:O	1:X:87:ASP:HB3	2.21	0.41
1:X:386:THR:C	1:X:388:GLU:H	2.24	0.41
1:X:245:ASP:O	1:X:249:VAL:HG23	2.21	0.40
1:X:278:GLN:HB3	1:X:312:LEU:HD21	2.02	0.40
1:X:88:ARG:NH1	1:X:147:GLU:HB3	2.36	0.40
1:X:97:ARG:HH12	1:X:99:PHE:HE1	1.69	0.40
1:X:133:GLN:NE2	1:X:140:GLN:H	2.19	0.40
1:X:115:MET:HG3	1:X:208:PHE:CE1	2.51	0.40

There are no symmetry-related clashes.

5.3 Torsion angles [i](#)

5.3.1 Protein backbone [i](#)

In the following table, the Percentiles column shows the percent Ramachandran outliers of the chain as a percentile score with respect to all X-ray entries followed by that with respect to entries of similar resolution.

The Analysed column shows the number of residues for which the backbone conformation was analysed, and the total number of residues.

Mol	Chain	Analysed	Favoured	Allowed	Outliers	Percentiles	
1	X	327/356 (92%)	299 (91%)	22 (7%)	6 (2%)	11	30

All (6) Ramachandran outliers are listed below:

Mol	Chain	Res	Type
1	X	381	ASP
1	X	382	GLU
1	X	226	THR
1	X	387	ILE
1	X	237	GLY
1	X	306	GLY

5.3.2 Protein sidechains ⓘ

In the following table, the Percentiles column shows the percent sidechain outliers of the chain as a percentile score with respect to all X-ray entries followed by that with respect to entries of similar resolution.

The Analysed column shows the number of residues for which the sidechain conformation was analysed, and the total number of residues.

Mol	Chain	Analysed	Rotameric	Outliers	Percentiles	
1	X	304/321 (95%)	278 (91%)	26 (9%)	13	33

All (26) residues with a non-rotameric sidechain are listed below:

Mol	Chain	Res	Type
1	X	52	GLU
1	X	86	LEU
1	X	107	ARG
1	X	124	ILE
1	X	134	LYS
1	X	153	LEU
1	X	161	LEU
1	X	180	LEU
1	X	190	LEU
1	X	196	VAL
1	X	197	VAL
1	X	241	LYS
1	X	248	SER
1	X	271	GLN
1	X	287	MET

Continued on next page...

Continued from previous page...

Mol	Chain	Res	Type
1	X	288	LYS
1	X	295	ARG
1	X	296	ASN
1	X	299	GLU
1	X	300	ASN
1	X	307	LEU
1	X	316	SER
1	X	360	ASN
1	X	361	VAL
1	X	379	GLN
1	X	383	ARG

Some sidechains can be flipped to improve hydrogen bonding and reduce clashes. All (9) such sidechains are listed below:

Mol	Chain	Res	Type
1	X	66	ASN
1	X	120	HIS
1	X	133	GLN
1	X	140	GLN
1	X	271	GLN
1	X	291	GLN
1	X	300	ASN
1	X	331	GLN
1	X	356	HIS

5.3.3 RNA ⓘ

There are no RNA molecules in this entry.

5.4 Non-standard residues in protein, DNA, RNA chains ⓘ

There are no non-standard protein/DNA/RNA residues in this entry.

5.5 Carbohydrates ⓘ

There are no carbohydrates in this entry.

5.6 Ligand geometry

1 ligand is modelled in this entry.

In the following table, the Counts columns list the number of bonds (or angles) for which Mogul statistics could be retrieved, the number of bonds (or angles) that are observed in the model and the number of bonds (or angles) that are defined in the chemical component dictionary. The Link column lists molecule types, if any, to which the group is linked. The Z score for a bond length (or angle) is the number of standard deviations the observed value is removed from the expected value. A bond length (or angle) with $|Z| > 2$ is considered an outlier worth inspection. RMSZ is the root-mean-square of all Z scores of the bond lengths (or angles).

Mol	Type	Chain	Res	Link	Bond lengths			Bond angles		
					Counts	RMSZ	# $ Z > 2$	Counts	RMSZ	# $ Z > 2$
2	JNK	X	600	-	34,34,34	0.98	2 (5%)	45,46,46	2.30	16 (35%)

In the following table, the Chirals column lists the number of chiral outliers, the number of chiral centers analysed, the number of these observed in the model and the number defined in the chemical component dictionary. Similar counts are reported in the Torsion and Rings columns. '-' means no outliers of that kind were identified.

Mol	Type	Chain	Res	Link	Chirals	Torsions	Rings
2	JNK	X	600	-	-	0/18/28/28	0/4/4/4

All (2) bond length outliers are listed below:

Mol	Chain	Res	Type	Atoms	Z	Observed(Å)	Ideal(Å)
2	X	600	JNK	C26-C28	2.01	1.56	1.51
2	X	600	JNK	C21-C25	2.21	1.41	1.37

All (16) bond angle outliers are listed below:

Mol	Chain	Res	Type	Atoms	Z	Observed(°)	Ideal(°)
2	X	600	JNK	O20-C16-C19	-4.65	116.08	122.12
2	X	600	JNK	C5-C9-N14	-4.05	118.52	123.06
2	X	600	JNK	C3-C7-N12	-3.41	119.24	123.06
2	X	600	JNK	C4-C8-N12	-3.19	120.26	123.90
2	X	600	JNK	C27-C24-C19	-3.10	105.94	111.12
2	X	600	JNK	C6-C10-N14	-2.83	120.67	123.90
2	X	600	JNK	C22-C25-C21	-2.76	118.90	122.87
2	X	600	JNK	N13-C9-N14	2.22	121.24	114.83
2	X	600	JNK	C2-C5-C9	2.37	120.83	118.57
2	X	600	JNK	C23-C26-C28	2.52	114.84	110.90
2	X	600	JNK	C24-C19-C16	3.08	117.07	110.54
2	X	600	JNK	C17-C21-C25	3.14	121.74	118.35

Continued on next page...

Continued from previous page...

Mol	Chain	Res	Type	Atoms	Z	Observed(°)	Ideal(°)
2	X	600	JNK	C8-N12-C7	4.41	123.36	117.28
2	X	600	JNK	C10-N14-C9	4.52	123.51	117.28
2	X	600	JNK	C19-C16-N13	4.71	121.72	115.17
2	X	600	JNK	C24-C27-C28	5.85	120.06	110.90

There are no chirality outliers.

There are no torsion outliers.

There are no ring outliers.

1 monomer is involved in 1 short contact:

Mol	Chain	Res	Type	Clashes	Symm-Clashes
2	X	600	JNK	1	0

5.7 Other polymers [i](#)

There are no such residues in this entry.

5.8 Polymer linkage issues [i](#)

There are no chain breaks in this entry.

6 Fit of model and data ⓘ

6.1 Protein, DNA and RNA chains ⓘ

EDS was not executed - this section will therefore be empty.

6.2 Non-standard residues in protein, DNA, RNA chains ⓘ

EDS was not executed - this section will therefore be empty.

6.3 Carbohydrates ⓘ

EDS was not executed - this section will therefore be empty.

6.4 Ligands ⓘ

EDS was not executed - this section will therefore be empty.

6.5 Other polymers ⓘ

EDS was not executed - this section will therefore be empty.