



wwPDB X-ray Structure Validation Summary Report ⓘ

Jan 31, 2016 – 07:18 PM GMT

PDB ID : 1EYS
Title : CRYSTAL STRUCTURE OF PHOTOSYNTHETIC REACTION CENTER FROM A THERMOPHILIC BACTERIUM, THERMOCHROMATIUM TEPIDUM
Authors : Nogi, T.; Fathir, I.; Kobayashi, M.; Nozawa, T.; Miki, K.
Deposited on : 2000-05-08
Resolution : 2.20 Å(reported)

This is a wwPDB X-ray Structure Validation Summary Report for a publicly released PDB entry.
We welcome your comments at validation@mail.wwpdb.org
A user guide is available at
<http://wwpdb.org/validation/2016/XrayValidationReportHelp>
with specific help available everywhere you see the ⓘ symbol.

The following versions of software and data (see [references ⓘ](#)) were used in the production of this report:

MolProbity : 4.02b-467
Mogul : 1.7 (RC4), CSD as536be (2015)
Xtriage (Phenix) : **NOT EXECUTED**
EDS : **NOT EXECUTED**
Percentile statistics : 20151230.v01 (using entries in the PDB archive December 30th 2015)
Ideal geometry (proteins) : Engh & Huber (2001)
Ideal geometry (DNA, RNA) : Parkinson et al. (1996)
Validation Pipeline (wwPDB-VP) : trunk26865

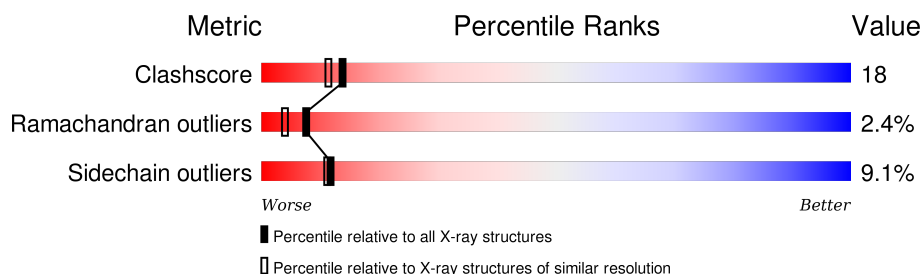
1 Overall quality at a glance

The following experimental techniques were used to determine the structure:

X-RAY DIFFRACTION

The reported resolution of this entry is 2.20 Å.

Percentile scores (ranging between 0-100) for global validation metrics of the entry are shown in the following graphic. The table shows the number of entries on which the scores are based.



| Metric | Whole archive (#Entries) | Similar resolution (#Entries, resolution range(Å)) |
|-----------------------|-----------------------------|---|
| Clashscore | 102246 | 4477 (2.20-2.20) |
| Ramachandran outliers | 100387 | 4404 (2.20-2.20) |
| Sidechain outliers | 100360 | 4405 (2.20-2.20) |

The table below summarises the geometric issues observed across the polymeric chains and their fit to the electron density. The red, orange, yellow and green segments on the lower bar indicate the fraction of residues that contain outliers for ≥ 3 , 2, 1 and 0 types of geometric quality criteria. A grey segment represents the fraction of residues that are not modelled. The numeric value for each fraction is indicated below the corresponding segment, with a dot representing fractions $\leq 5\%$. The upper red bar (where present) indicates the fraction of residues that have poor fit to the electron density. The numeric value is given above the bar.

Note EDS was not executed.

| Mol | Chain | Length | Quality of chain |
|-----|-------|--------|------------------|
| 1 | C | 382 | |
| 2 | L | 280 | |
| 3 | M | 324 | |
| 4 | H | 259 | |

The following table lists non-polymeric compounds, carbohydrate monomers and non-standard residues in protein, DNA, RNA chains that are outliers for geometric or electron-density-fit criteria:

| Mol | Type | Chain | Res | Chirality | Geometry | Clashes | Electron density |
|-----|------|-------|-----|-----------|----------|---------|------------------|
| 8 | BPH | L | 606 | X | - | - | - |

2 Entry composition

There are 14 unique types of molecules in this entry. The entry contains 10044 atoms, of which 0 are hydrogens and 0 are deuteriums.

In the tables below, the ZeroOcc column contains the number of atoms modelled with zero occupancy, the AltConf column contains the number of residues with at least one atom in alternate conformation and the Trace column contains the number of residues modelled with at most 2 atoms.

- Molecule 1 is a protein called PHOTOSYNTHETIC REACTION CENTER.

| Mol | Chain | Residues | Atoms | | | | | ZeroOcc | AltConf | Trace |
|-----|-------|----------|-------|------|-----|-----|----|---------|---------|-------|
| 1 | C | 310 | Total | C | N | O | S | 0 | 0 | 0 |
| | | | 2402 | 1514 | 421 | 451 | 16 | | | |

- Molecule 2 is a protein called PHOTOSYNTHETIC REACTION CENTER.

| Mol | Chain | Residues | Atoms | | | | | ZeroOcc | AltConf | Trace |
|-----|-------|----------|-------|------|-----|-----|----|---------|---------|-------|
| 2 | L | 280 | Total | C | N | O | S | 0 | 0 | 0 |
| | | | 2233 | 1501 | 361 | 361 | 10 | | | |

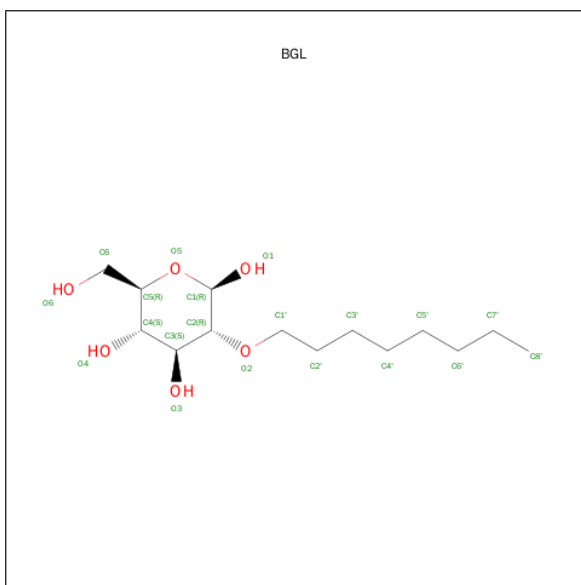
- Molecule 3 is a protein called PHOTOSYNTHETIC REACTION CENTER.

| Mol | Chain | Residues | Atoms | | | | | ZeroOcc | AltConf | Trace |
|-----|-------|----------|-------|------|-----|-----|----|---------|---------|-------|
| 3 | M | 318 | Total | C | N | O | S | 0 | 0 | 0 |
| | | | 2537 | 1705 | 413 | 409 | 10 | | | |

- Molecule 4 is a protein called PHOTOSYNTHETIC REACTION CENTER.

| Mol | Chain | Residues | Atoms | | | | | ZeroOcc | AltConf | Trace |
|-----|-------|----------|-------|------|-----|-----|---|---------|---------|-------|
| 4 | H | 238 | Total | C | N | O | S | 0 | 0 | 0 |
| | | | 1837 | 1187 | 309 | 336 | 5 | | | |

- Molecule 5 is SUGAR (B-2-OCTYLGLUCOSIDE) (three-letter code: BGL) (formula: C₁₄H₂₈O₆).

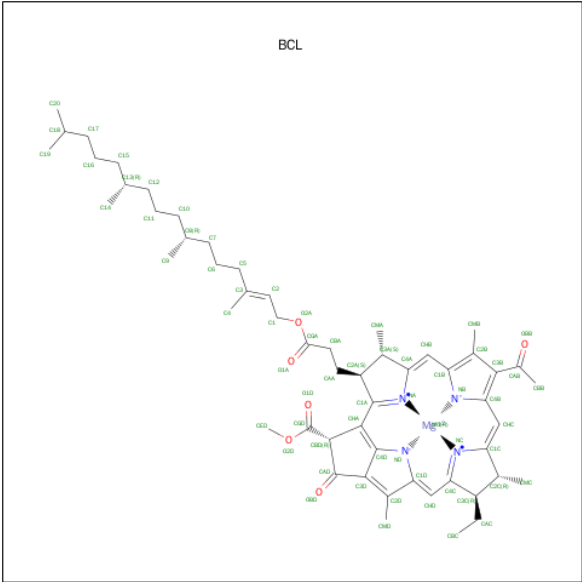


| Mol | Chain | Residues | Atoms | | | ZeroOcc | AltConf |
|-----|-------|----------|-------|----|---|---------|---------|
| 5 | L | 1 | Total | C | O | 0 | 0 |
| | | | 20 | 14 | 6 | | |
| 5 | M | 1 | Total | C | O | 0 | 0 |
| | | | 20 | 14 | 6 | | |
| 5 | L | 1 | Total | C | O | 0 | 0 |
| | | | 20 | 14 | 6 | | |
| 5 | L | 1 | Total | C | O | 0 | 0 |
| | | | 20 | 14 | 6 | | |
| 5 | M | 1 | Total | C | O | 0 | 0 |
| | | | 20 | 14 | 6 | | |
| 5 | M | 1 | Total | C | O | 0 | 0 |
| | | | 20 | 14 | 6 | | |

- Molecule 6 is FE (III) ION (three-letter code: FE) (formula: Fe).

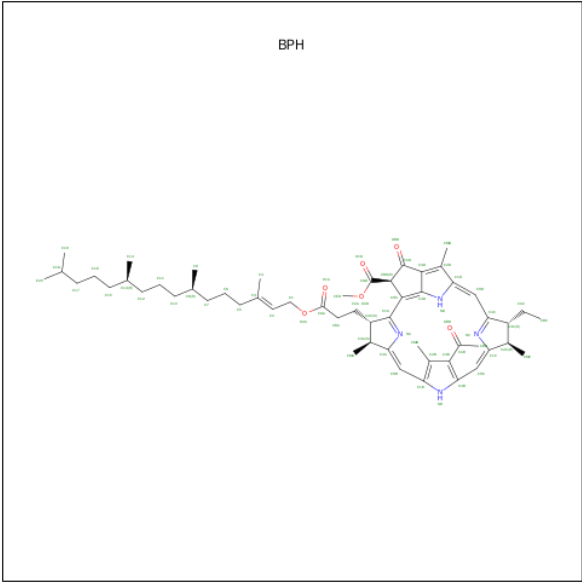
| Mol | Chain | Residues | Atoms | | ZeroOcc | AltConf |
|-----|-------|----------|-------|----|---------|---------|
| 6 | M | 1 | Total | Fe | 0 | 0 |
| | | | 1 | 1 | | |

- Molecule 7 is BACTERIOCHLOROPHYLL A (three-letter code: BCL) (formula: C₅₅H₇₄MgN₄O₆).



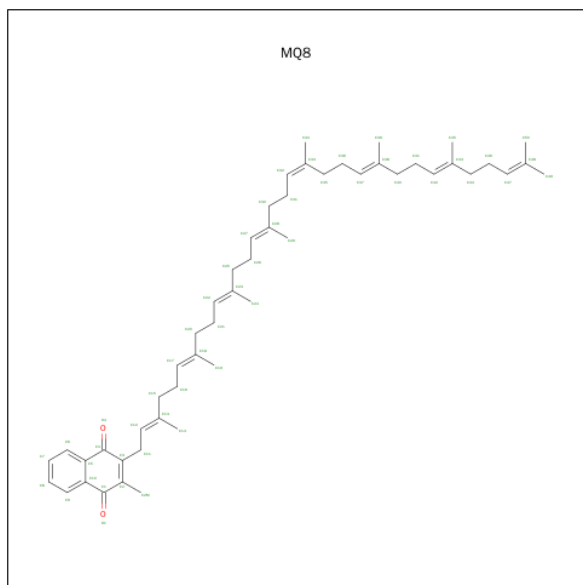
| Mol | Chain | Residues | Atoms | | | | | ZeroOcc | AltConf |
|-----|-------|----------|-------------|---------|---------|--------|--------|---------|---------|
| 7 | M | 1 | Total 66 | C 55 | Mg 1 | N 4 | O 6 | 0 | 0 |
| 7 | L | 1 | Total 66 | C 55 | Mg 1 | N 4 | O 6 | 0 | 0 |
| 7 | M | 1 | Total 66 | C 55 | Mg 1 | N 4 | O 6 | 0 | 0 |
| 7 | L | 1 | Total 66 | C 55 | Mg 1 | N 4 | O 6 | 0 | 0 |

- Molecule 8 is BACTERIOPHEOPHYTIN A (three-letter code: BPH) (formula: C₅₅H₇₆N₄O₆).



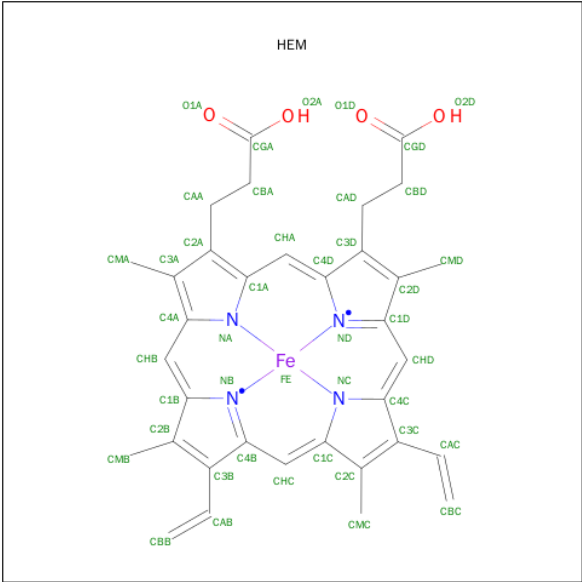
| Mol | Chain | Residues | Atoms | | | | ZeroOcc | AltConf |
|-----|-------|----------|-------|----|---|---|---------|---------|
| 8 | M | 1 | Total | C | N | O | 0 | 0 |
| | | | 65 | 55 | 4 | 6 | | |
| 8 | L | 1 | Total | C | N | O | 0 | 0 |
| | | | 65 | 55 | 4 | 6 | | |

- Molecule 9 is MENAQUINONE 8 (three-letter code: MQ8) (formula: $C_{51}H_{72}O_2$).



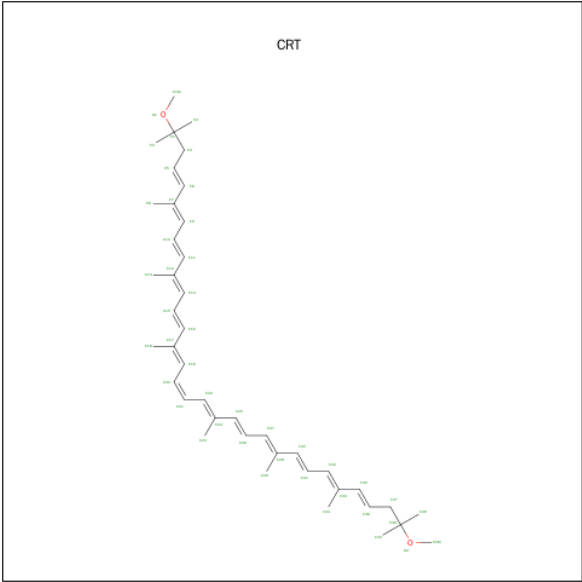
| Mol | Chain | Residues | Atoms | | | ZeroOcc | AltConf |
|-----|-------|----------|-------|----|---|---------|---------|
| 9 | M | 1 | Total | C | O | 0 | 0 |
| | | | 53 | 51 | 2 | | |

- Molecule 10 is PROTOPORPHYRIN IX CONTAINING FE (three-letter code: HEM) (formula: $C_{34}H_{32}FeN_4O_4$).



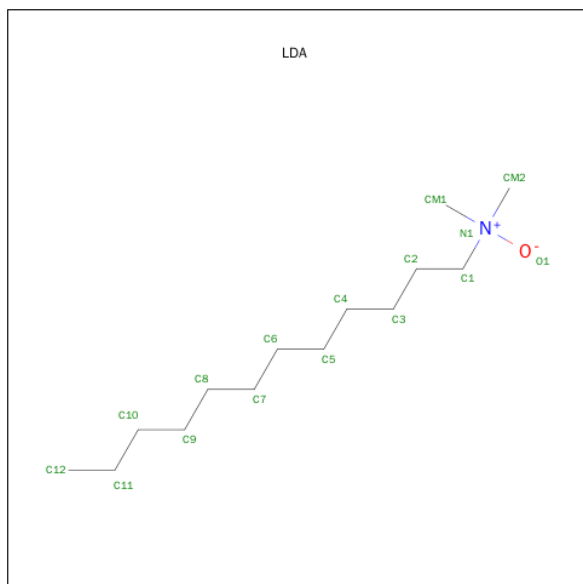
| Mol | Chain | Residues | Atoms | | | | | ZeroOcc | AltConf |
|-----|-------|----------|-------------|---------|---------|--------|--------|---------|---------|
| 10 | C | 1 | Total 43 | C 34 | Fe 1 | N 4 | O 4 | 0 | 0 |
| 10 | C | 1 | Total 43 | C 34 | Fe 1 | N 4 | O 4 | 0 | 0 |
| 10 | C | 1 | Total 43 | C 34 | Fe 1 | N 4 | O 4 | 0 | 0 |
| 10 | C | 1 | Total 43 | C 34 | Fe 1 | N 4 | O 4 | 0 | 0 |

- Molecule 11 is SPIRILLOXANTHIN (three-letter code: CRT) (formula: C₄₂H₆₀O₂).



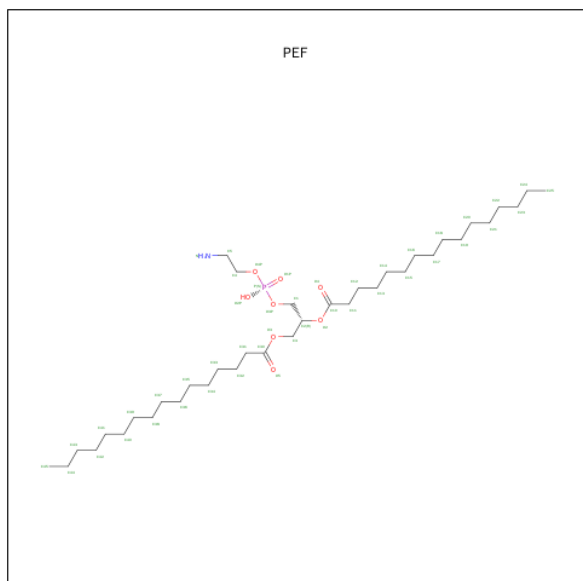
| Mol | Chain | Residues | Atoms | | | ZeroOcc | AltConf |
|-----|-------|----------|-------|----|---|---------|---------|
| 11 | M | 1 | Total | C | O | 0 | 0 |
| | | | 44 | 42 | 2 | | |

- Molecule 12 is LAURYL DIMETHYLAMINE-N-OXIDE (three-letter code: LDA) (formula: $C_{14}H_{31}NO$).



| Mol | Chain | Residues | Atoms | | | | ZeroOcc | AltConf |
|-----|-------|----------|-------|----|---|---|---------|---------|
| 12 | L | 1 | Total | C | N | O | 0 | 0 |
| | | | 16 | 14 | 1 | 1 | | |

- Molecule 13 is DI-PALMITOYL-3-SN-PHOSPHATIDYLETHANOLAMINE (three-letter code: PEF) (formula: $C_{37}H_{74}NO_8P$).



| Mol | Chain | Residues | Atoms | | | | | ZeroOcc | AltConf |
|-----|-------|----------|-------|----|---|---|---|---------|---------|
| 13 | H | 1 | Total | C | N | O | P | 0 | 0 |
| | | | 47 | 37 | 1 | 8 | 1 | | |

- Molecule 14 is water.

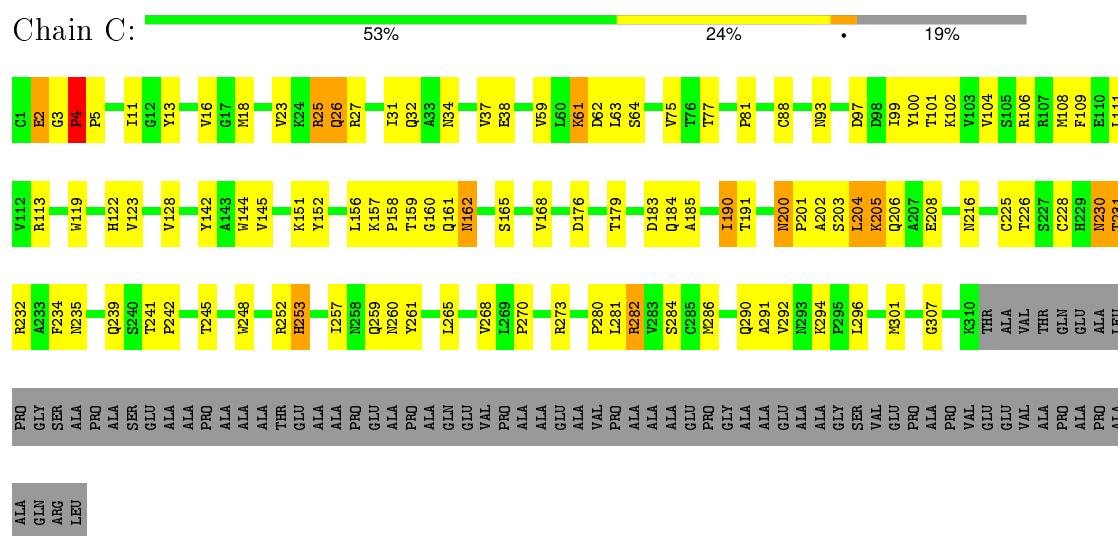
| Mol | Chain | Residues | Atoms | | ZeroOcc | AltConf |
|-----|-------|----------|-------|----|---------|---------|
| 14 | C | 94 | Total | O | 0 | 0 |
| | | | 94 | 94 | | |
| 14 | H | 22 | Total | O | 0 | 0 |
| | | | 22 | 22 | | |
| 14 | L | 37 | Total | O | 0 | 0 |
| | | | 37 | 37 | | |
| 14 | M | 35 | Total | O | 0 | 0 |
| | | | 35 | 35 | | |

3 Residue-property plots

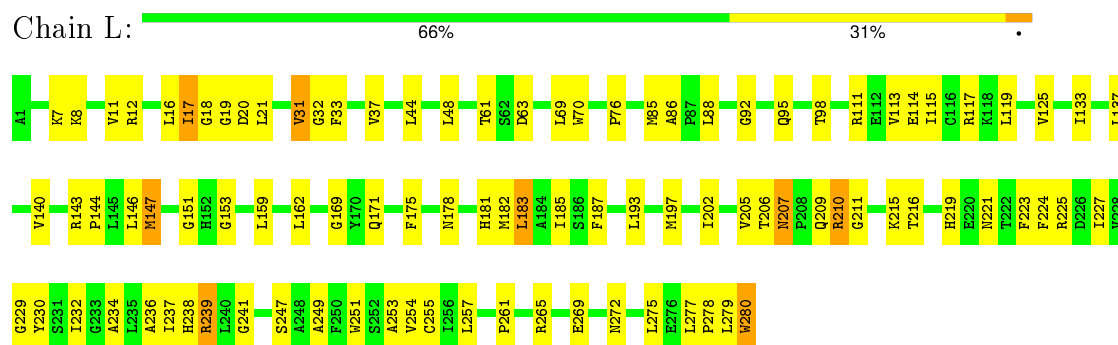
These plots are drawn for all protein, RNA and DNA chains in the entry. The first graphic for a chain summarises the proportions of errors displayed in the second graphic. The second graphic shows the sequence view annotated by issues in geometry and electron density. Residues are color-coded according to the number of geometric quality criteria for which they contain at least one outlier: green = 0, yellow = 1, orange = 2 and red = 3 or more. A red dot above a residue indicates a poor fit to the electron density ($RSRZ > 2$). Stretches of 2 or more consecutive residues without any outlier are shown as a green connector. Residues present in the sample, but not in the model, are shown in grey.

Note EDS was not executed.

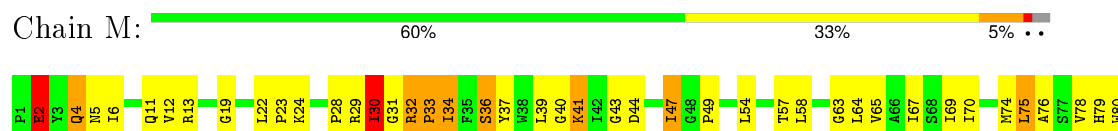
• Molecule 1: PHOTOSYNTHETIC REACTION CENTER

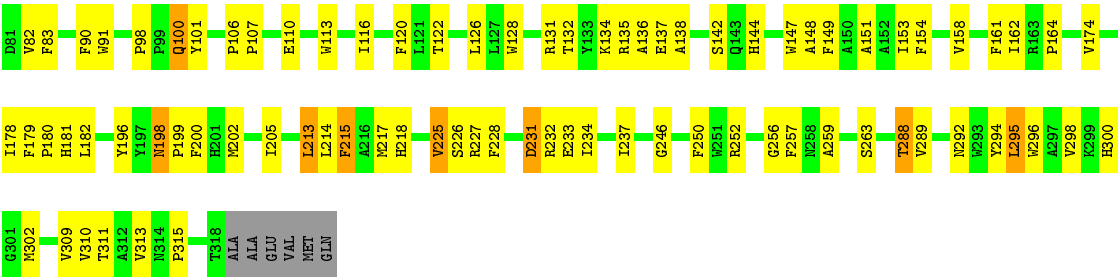


• Molecule 2: PHOTOSYNTHETIC REACTION CENTER

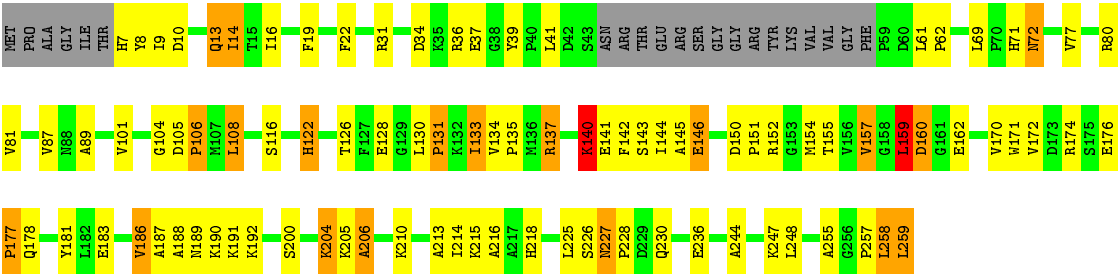


• Molecule 3: PHOTOSYNTHETIC REACTION CENTER





● Molecule 4: PHOTOSYNTHETIC REACTION CENTER



4 Data and refinement statistics

Xtriage (Phenix) and EDS were not executed - this section will therefore be incomplete.

| Property | Value | Source |
|--|--|-----------|
| Space group | P 21 21 21 | Depositor |
| Cell constants a, b, c, α , β , γ | 133.30Å 196.60Å 84.16Å 90.00° 90.00° 90.00° | Depositor |
| Resolution (Å) | 10.00 – 2.20 | Depositor |
| % Data completeness (in resolution range) | (Not available) (10.00-2.20) | Depositor |
| R_{merge} | 0.09 | Depositor |
| R_{sym} | (Not available) | Depositor |
| Refinement program | X-PLOR 3.851 | Depositor |
| R, R_{free} | 0.231 , 0.287 | Depositor |
| Estimated twinning fraction | No twinning to report. | Xtriage |
| Total number of atoms | 10044 | wwPDB-VP |
| Average B, all atoms (Å ²) | 34.0 | wwPDB-VP |

5 Model quality

5.1 Standard geometry

Bond lengths and bond angles in the following residue types are not validated in this section: BCL, LDA, CRT, BPH, BGL, FE, MQ8, HEM, PEF

The Z score for a bond length (or angle) is the number of standard deviations the observed value is removed from the expected value. A bond length (or angle) with $|Z| > 5$ is considered an outlier worth inspection. RMSZ is the root-mean-square of all Z scores of the bond lengths (or angles).

| Mol | Chain | Bond lengths | | Bond angles | |
|-----|-------|--------------|---------------|-------------|----------------|
| | | RMSZ | $\# Z > 5$ | RMSZ | $\# Z > 5$ |
| 1 | C | 0.53 | 1/2471 (0.0%) | 0.72 | 2/3374 (0.1%) |
| 2 | L | 0.50 | 0/2320 | 0.65 | 0/3170 |
| 3 | M | 0.49 | 0/2637 | 0.67 | 1/3610 (0.0%) |
| 4 | H | 0.47 | 0/1890 | 0.76 | 1/2576 (0.0%) |
| All | All | 0.50 | 1/9318 (0.0%) | 0.69 | 4/12730 (0.0%) |

All (1) bond length outliers are listed below:

| Mol | Chain | Res | Type | Atoms | Z | Observed(Å) | Ideal(Å) |
|-----|-------|-----|------|-------|-------|-------------|----------|
| 1 | C | 225 | CYS | CB-SG | -5.56 | 1.72 | 1.81 |

All (4) bond angle outliers are listed below:

| Mol | Chain | Res | Type | Atoms | Z | Observed(°) | Ideal(°) |
|-----|-------|-----|------|----------|-------|-------------|----------|
| 4 | H | 159 | LEU | CA-CB-CG | 7.48 | 132.51 | 115.30 |
| 1 | C | 230 | ASN | N-CA-C | -6.83 | 92.55 | 111.00 |
| 3 | M | 47 | ILE | N-CA-C | -5.57 | 95.95 | 111.00 |
| 1 | C | 3 | GLY | N-CA-C | 5.11 | 125.88 | 113.10 |

There are no chirality outliers.

There are no planarity outliers.

5.2 Too-close contacts

In the following table, the Non-H and H(model) columns list the number of non-hydrogen atoms and hydrogen atoms in the chain respectively. The H(added) column lists the number of hydrogen atoms added and optimized by MolProbity. The Clashes column lists the number of clashes within the asymmetric unit, whereas Symm-Clashes lists symmetry related clashes.

| Mol | Chain | Non-H | H(model) | H(added) | Clashes | Symm-Clashes |
|-----|-------|-------|----------|----------|---------|--------------|
| 1 | C | 2402 | 0 | 2323 | 74 | 0 |
| 2 | L | 2233 | 0 | 2195 | 85 | 0 |
| 3 | M | 2537 | 0 | 2511 | 123 | 0 |
| 4 | H | 1837 | 0 | 1831 | 82 | 0 |
| 5 | L | 60 | 0 | 84 | 10 | 0 |
| 5 | M | 60 | 0 | 84 | 1 | 0 |
| 6 | M | 1 | 0 | 0 | 0 | 0 |
| 7 | L | 132 | 0 | 148 | 14 | 0 |
| 7 | M | 132 | 0 | 148 | 16 | 0 |
| 8 | L | 65 | 0 | 75 | 6 | 0 |
| 8 | M | 65 | 0 | 75 | 4 | 0 |
| 9 | M | 53 | 0 | 72 | 1 | 0 |
| 10 | C | 172 | 0 | 120 | 5 | 0 |
| 11 | M | 44 | 0 | 60 | 2 | 0 |
| 12 | L | 16 | 0 | 31 | 2 | 0 |
| 13 | H | 47 | 0 | 73 | 7 | 0 |
| 14 | C | 94 | 0 | 0 | 0 | 0 |
| 14 | H | 22 | 0 | 0 | 1 | 0 |
| 14 | L | 37 | 0 | 0 | 0 | 0 |
| 14 | M | 35 | 0 | 0 | 1 | 0 |
| All | All | 10044 | 0 | 9830 | 364 | 0 |

The all-atom clashscore is defined as the number of clashes found per 1000 atoms (including hydrogen atoms). The all-atom clashscore for this structure is 18.

The worst 5 of 364 close contacts within the same asymmetric unit are listed below, sorted by their clash magnitude.

| Atom-1 | Atom-2 | Interatomic distance (Å) | Clash overlap (Å) |
|-----------------|------------------|--------------------------|-------------------|
| 3:M:69:ILE:HD13 | 3:M:116:ILE:HG23 | 1.36 | 1.06 |
| 4:H:7:HIS:HB3 | 4:H:9:ILE:HG12 | 1.40 | 1.00 |
| 4:H:151:PRO:HA | 4:H:154:MET:SD | 2.07 | 0.94 |
| 3:M:33:PRO:HG3 | 3:M:49:PRO:HD3 | 1.52 | 0.92 |
| 2:L:86:ALA:H | 2:L:95:GLN:HE22 | 1.06 | 0.90 |

There are no symmetry-related clashes.

5.3 Torsion angles ⓘ

5.3.1 Protein backbone ⓘ

In the following table, the Percentiles column shows the percent Ramachandran outliers of the chain as a percentile score with respect to all X-ray entries followed by that with respect to entries of similar resolution.

The Analysed column shows the number of residues for which the backbone conformation was analysed, and the total number of residues.

| Mol | Chain | Analysed | Favoured | Allowed | Outliers | Percentiles | |
|-----|-------|-----------------|-----------|-----------|----------|-------------|----|
| 1 | C | 308/382 (81%) | 268 (87%) | 31 (10%) | 9 (3%) | 6 | 2 |
| 2 | L | 278/280 (99%) | 249 (90%) | 27 (10%) | 2 (1%) | 26 | 25 |
| 3 | M | 316/324 (98%) | 279 (88%) | 31 (10%) | 6 (2%) | 10 | 6 |
| 4 | H | 234/259 (90%) | 191 (82%) | 33 (14%) | 10 (4%) | 3 | 1 |
| All | All | 1136/1245 (91%) | 987 (87%) | 122 (11%) | 27 (2%) | 7 | 4 |

5 of 27 Ramachandran outliers are listed below:

| Mol | Chain | Res | Type |
|-----|-------|-----|------|
| 1 | C | 2 | GLU |
| 1 | C | 4 | PRO |
| 4 | H | 140 | LYS |
| 4 | H | 142 | PHE |
| 4 | H | 146 | GLU |

5.3.2 Protein sidechains ⓘ

In the following table, the Percentiles column shows the percent sidechain outliers of the chain as a percentile score with respect to all X-ray entries followed by that with respect to entries of similar resolution.

The Analysed column shows the number of residues for which the sidechain conformation was analysed, and the total number of residues.

| Mol | Chain | Analysed | Rotameric | Outliers | Percentiles | |
|-----|-------|----------------|-----------|----------|-------------|----|
| 1 | C | 259/300 (86%) | 239 (92%) | 20 (8%) | 16 | 16 |
| 2 | L | 228/228 (100%) | 212 (93%) | 16 (7%) | 19 | 19 |
| 3 | M | 254/258 (98%) | 234 (92%) | 20 (8%) | 15 | 15 |
| 4 | H | 195/211 (92%) | 166 (85%) | 29 (15%) | 4 | 3 |
| All | All | 936/997 (94%) | 851 (91%) | 85 (9%) | 12 | 11 |

5 of 85 residues with a non-rotameric sidechain are listed below:

| Mol | Chain | Res | Type |
|-----|-------|-----|------|
| 3 | M | 24 | LYS |
| 3 | M | 181 | HIS |
| 4 | H | 186 | VAL |
| 3 | M | 30 | ILE |
| 3 | M | 41 | LYS |

Some sidechains can be flipped to improve hydrogen bonding and reduce clashes. 5 of 20 such sidechains are listed below:

| Mol | Chain | Res | Type |
|-----|-------|-----|------|
| 2 | L | 174 | HIS |
| 2 | L | 207 | ASN |
| 4 | H | 13 | GLN |
| 1 | C | 290 | GLN |
| 2 | L | 95 | GLN |

5.3.3 RNA [i](#)

There are no RNA molecules in this entry.

5.4 Non-standard residues in protein, DNA, RNA chains [i](#)

There are no non-standard protein/DNA/RNA residues in this entry.

5.5 Carbohydrates [i](#)

There are no carbohydrates in this entry.

5.6 Ligand geometry [i](#)

Of 21 ligands modelled in this entry, 1 is monoatomic - leaving 20 for Mogul analysis.

In the following table, the Counts columns list the number of bonds (or angles) for which Mogul statistics could be retrieved, the number of bonds (or angles) that are observed in the model and the number of bonds (or angles) that are defined in the chemical component dictionary. The Link column lists molecule types, if any, to which the group is linked. The Z score for a bond length (or angle) is the number of standard deviations the observed value is removed from the expected value. A bond length (or angle) with $|Z| > 2$ is considered an outlier worth inspection. RMSZ is the root-mean-square of all Z scores of the bond lengths (or angles).

| Mol | Type | Chain | Res | Link | Bond lengths | | | Bond angles | | |
|-----|------|-------|-----|------|--------------|------|----------|-------------|------|----------|
| | | | | | Counts | RMSZ | # Z > 2 | Counts | RMSZ | # Z > 2 |
| 10 | HEM | C | 609 | 1 | 30,50,50 | 3.11 | 12 (40%) | 24,82,82 | 2.10 | 6 (25%) |
| 10 | HEM | C | 610 | 1 | 30,50,50 | 3.38 | 13 (43%) | 24,82,82 | 2.20 | 7 (29%) |
| 10 | HEM | C | 611 | 1 | 30,50,50 | 3.18 | 11 (36%) | 24,82,82 | 2.13 | 6 (25%) |
| 10 | HEM | C | 612 | 1 | 30,50,50 | 3.19 | 11 (36%) | 24,82,82 | 2.09 | 6 (25%) |
| 13 | PEF | H | 708 | - | 45,46,46 | 2.15 | 6 (13%) | 46,51,51 | 1.43 | 6 (13%) |
| 7 | BCL | L | 602 | 2 | 53,74,74 | 1.87 | 7 (13%) | 57,115,115 | 1.93 | 12 (21%) |
| 7 | BCL | L | 604 | 2 | 53,74,74 | 2.02 | 5 (9%) | 57,115,115 | 2.18 | 16 (28%) |
| 8 | BPH | L | 606 | - | 64,70,70 | 1.18 | 7 (10%) | 73,101,101 | 2.13 | 19 (26%) |
| 5 | BGL | L | 701 | - | 19,20,20 | 1.06 | 1 (5%) | 23,25,25 | 2.06 | 8 (34%) |
| 5 | BGL | L | 703 | - | 19,20,20 | 0.92 | 1 (5%) | 23,25,25 | 2.10 | 8 (34%) |
| 5 | BGL | L | 704 | - | 19,20,20 | 0.96 | 1 (5%) | 23,25,25 | 2.50 | 9 (39%) |
| 12 | LDA | L | 707 | - | 15,15,15 | 4.08 | 2 (13%) | 16,17,17 | 0.97 | 1 (6%) |
| 7 | BCL | M | 601 | 3 | 53,74,74 | 2.07 | 7 (13%) | 57,115,115 | 2.28 | 17 (29%) |
| 7 | BCL | M | 603 | 3 | 53,74,74 | 1.84 | 4 (7%) | 57,115,115 | 2.09 | 12 (21%) |
| 8 | BPH | M | 605 | - | 64,70,70 | 1.22 | 6 (9%) | 73,101,101 | 1.98 | 16 (21%) |
| 9 | MQ8 | M | 608 | - | 54,54,54 | 2.62 | 17 (31%) | 68,69,69 | 3.05 | 24 (35%) |
| 11 | CRT | M | 613 | - | 41,43,43 | 2.74 | 15 (36%) | 46,54,54 | 2.58 | 6 (13%) |
| 5 | BGL | M | 702 | - | 19,20,20 | 1.03 | 1 (5%) | 23,25,25 | 2.49 | 9 (39%) |
| 5 | BGL | M | 705 | - | 19,20,20 | 1.00 | 1 (5%) | 23,25,25 | 2.09 | 7 (30%) |
| 5 | BGL | M | 706 | - | 19,20,20 | 0.98 | 1 (5%) | 23,25,25 | 2.11 | 8 (34%) |

In the following table, the Chirals column lists the number of chiral outliers, the number of chiral centers analysed, the number of these observed in the model and the number defined in the chemical component dictionary. Similar counts are reported in the Torsion and Rings columns. '-' means no outliers of that kind were identified.

| Mol | Type | Chain | Res | Link | Chirals | Torsions | Rings |
|-----|------|-------|-----|------|-----------|--------------|---------|
| 10 | HEM | C | 609 | 1 | - | 0/10/54/54 | 0/0/8/8 |
| 10 | HEM | C | 610 | 1 | - | 0/10/54/54 | 0/0/8/8 |
| 10 | HEM | C | 611 | 1 | - | 0/10/54/54 | 0/0/8/8 |
| 10 | HEM | C | 612 | 1 | - | 0/10/54/54 | 0/0/8/8 |
| 13 | PEF | H | 708 | - | - | 0/50/50/50 | 0/0/0/0 |
| 7 | BCL | L | 602 | 2 | - | 0/37/137/137 | 0/0/9/9 |
| 7 | BCL | L | 604 | 2 | - | 0/37/137/137 | 0/0/9/9 |
| 8 | BPH | L | 606 | - | 1/1/18/22 | 0/54/105/105 | 0/1/6/6 |
| 5 | BGL | L | 701 | - | - | 0/11/31/31 | 0/1/1/1 |
| 5 | BGL | L | 703 | - | - | 0/11/31/31 | 0/1/1/1 |
| 5 | BGL | L | 704 | - | - | 0/11/31/31 | 0/1/1/1 |

Continued on next page...

Continued from previous page...

| Mol | Type | Chain | Res | Link | Chirals | Torsions | Rings |
|-----|------|-------|-----|------|---------|--------------|---------|
| 12 | LDA | L | 707 | - | - | 0/13/13/13 | 0/0/0/0 |
| 7 | BCL | M | 601 | 3 | - | 0/37/137/137 | 0/0/9/9 |
| 7 | BCL | M | 603 | 3 | - | 0/37/137/137 | 0/0/9/9 |
| 8 | BPH | M | 605 | - | - | 0/54/105/105 | 0/1/6/6 |
| 9 | MQ8 | M | 608 | - | - | 0/47/67/67 | 0/2/2/2 |
| 11 | CRT | M | 613 | - | - | 0/51/51/51 | 0/0/0/0 |
| 5 | BGL | M | 702 | - | - | 0/11/31/31 | 0/1/1/1 |
| 5 | BGL | M | 705 | - | - | 0/11/31/31 | 0/1/1/1 |
| 5 | BGL | M | 706 | - | - | 0/11/31/31 | 0/1/1/1 |

The worst 5 of 129 bond length outliers are listed below:

| Mol | Chain | Res | Type | Atoms | Z | Observed(Å) | Ideal(Å) |
|-----|-------|-----|------|---------|--------|-------------|----------|
| 12 | L | 707 | LDA | O1-N1 | -15.39 | 1.24 | 1.39 |
| 7 | M | 601 | BCL | C3C-C4C | -11.88 | 1.36 | 1.51 |
| 7 | L | 604 | BCL | C3C-C4C | -11.81 | 1.36 | 1.51 |
| 7 | M | 603 | BCL | C3C-C4C | -10.33 | 1.38 | 1.51 |
| 7 | L | 602 | BCL | C3C-C4C | -10.18 | 1.38 | 1.51 |

The worst 5 of 203 bond angle outliers are listed below:

| Mol | Chain | Res | Type | Atoms | Z | Observed(°) | Ideal(°) |
|-----|-------|-----|------|-------------|--------|-------------|----------|
| 11 | M | 613 | CRT | C37-C36-C35 | -11.22 | 108.70 | 124.67 |
| 11 | M | 613 | CRT | C4-C5-C6 | -9.51 | 111.13 | 124.67 |
| 9 | M | 608 | MQ8 | C35-C33-C32 | -8.22 | 105.46 | 121.05 |
| 9 | M | 608 | MQ8 | C11-C3-C4 | -7.58 | 109.82 | 118.47 |
| 8 | L | 606 | BPH | O1D-CGD-CBD | -6.67 | 115.06 | 124.62 |

All (1) chirality outliers are listed below:

| Mol | Chain | Res | Type | Atom |
|-----|-------|-----|------|------|
| 8 | L | 606 | BPH | C8 |

There are no torsion outliers.

There are no ring outliers.

17 monomers are involved in 65 short contacts:

| Mol | Chain | Res | Type | Clashes | Symm-Clashes |
|-----|-------|-----|------|---------|--------------|
| 10 | C | 609 | HEM | 1 | 0 |
| 10 | C | 610 | HEM | 2 | 0 |
| 10 | C | 612 | HEM | 2 | 0 |

Continued on next page...

Continued from previous page...

| Mol | Chain | Res | Type | Clashes | Symm-Clashes |
|-----|-------|-----|------|---------|--------------|
| 13 | H | 708 | PEF | 7 | 0 |
| 7 | L | 602 | BCL | 7 | 0 |
| 7 | L | 604 | BCL | 10 | 0 |
| 8 | L | 606 | BPH | 6 | 0 |
| 5 | L | 701 | BGL | 3 | 0 |
| 5 | L | 703 | BGL | 4 | 0 |
| 5 | L | 704 | BGL | 3 | 0 |
| 12 | L | 707 | LDA | 2 | 0 |
| 7 | M | 601 | BCL | 10 | 0 |
| 7 | M | 603 | BCL | 6 | 0 |
| 8 | M | 605 | BPH | 4 | 0 |
| 9 | M | 608 | MQ8 | 1 | 0 |
| 11 | M | 613 | CRT | 2 | 0 |
| 5 | M | 702 | BGL | 1 | 0 |

5.7 Other polymers [i](#)

There are no such residues in this entry.

5.8 Polymer linkage issues [i](#)

There are no chain breaks in this entry.

6 Fit of model and data ⓘ

6.1 Protein, DNA and RNA chains ⓘ

EDS was not executed - this section will therefore be empty.

6.2 Non-standard residues in protein, DNA, RNA chains ⓘ

EDS was not executed - this section will therefore be empty.

6.3 Carbohydrates ⓘ

EDS was not executed - this section will therefore be empty.

6.4 Ligands ⓘ

EDS was not executed - this section will therefore be empty.

6.5 Other polymers ⓘ

EDS was not executed - this section will therefore be empty.