



wwPDB X-ray Structure Validation Summary Report ⓘ

Feb 1, 2016 – 04:26 PM GMT

PDB ID : 4EZ4
Title : free KDM6B structure
Authors : Cheng, Z.J.; Patel, D.J.
Deposited on : 2012-05-02
Resolution : 2.99 Å(reported)

This is a wwPDB X-ray Structure Validation Summary Report for a publicly released PDB entry.
We welcome your comments at validation@mail.wwpdb.org
A user guide is available at
<http://wwpdb.org/validation/2016/XrayValidationReportHelp>
with specific help available everywhere you see the ⓘ symbol.

The following versions of software and data (see [references ⓘ](#)) were used in the production of this report:

MolProbity : 4.02b-467
Mogul : 1.7 (RC4), CSD as536be (2015)
Xtriage (Phenix) : 1.9-1692
EDS : rb-20026688
Percentile statistics : 20151230.v01 (using entries in the PDB archive December 30th 2015)
Refmac : 5.8.0135
CCP4 : 6.5.0
Ideal geometry (proteins) : Engh & Huber (2001)
Ideal geometry (DNA, RNA) : Parkinson et al. (1996)
Validation Pipeline (wwPDB-VP) : trunk26865

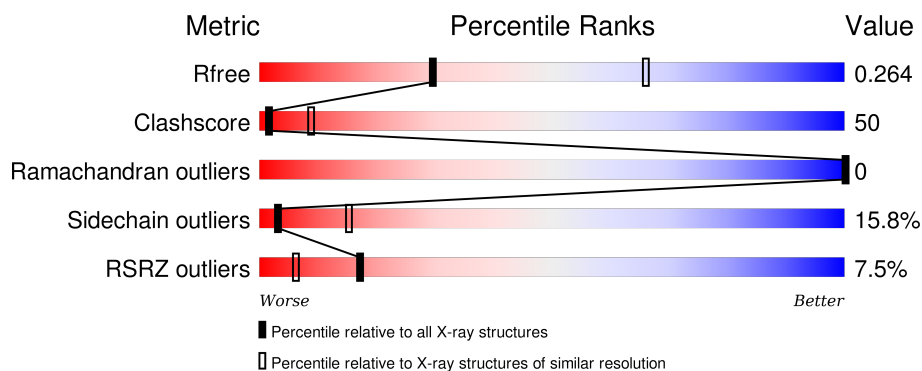
1 Overall quality at a glance

The following experimental techniques were used to determine the structure:

X-RAY DIFFRACTION

The reported resolution of this entry is 2.99 Å.

Percentile scores (ranging between 0-100) for global validation metrics of the entry are shown in the following graphic. The table shows the number of entries on which the scores are based.



Metric	Whole archive (#Entries)	Similar resolution (#Entries, resolution range(Å))
R_{free}	91344	1578 (3.00-3.00)
Clashscore	102246	1912 (3.00-3.00)
Ramachandran outliers	100387	1853 (3.00-3.00)
Sidechain outliers	100360	1856 (3.00-3.00)
RSRZ outliers	91569	1592 (3.00-3.00)

The table below summarises the geometric issues observed across the polymeric chains and their fit to the electron density. The red, orange, yellow and green segments on the lower bar indicate the fraction of residues that contain outliers for ≥ 3 , 2, 1 and 0 types of geometric quality criteria. A grey segment represents the fraction of residues that are not modelled. The numeric value for each fraction is indicated below the corresponding segment, with a dot representing fractions $\leq 5\%$. The upper red bar (where present) indicates the fraction of residues that have poor fit to the electron density. The numeric value is given above the bar.

Mol	Chain	Length	Quality of chain
1	A	486	<div> <div>6%</div> <div> <div></div> <div>39%</div> <div>45%</div> <div>9%</div> <div>8%</div> </div> </div>
1	B	486	<div> <div>7%</div> <div> <div></div> <div>40%</div> <div>43%</div> <div>8%</div> <div>8%</div> </div> </div>

2 Entry composition [i](#)

There are 5 unique types of molecules in this entry. The entry contains 7268 atoms, of which 32 are hydrogens and 0 are deuteriums.

In the tables below, the ZeroOcc column contains the number of atoms modelled with zero occupancy, the AltConf column contains the number of residues with at least one atom in alternate conformation and the Trace column contains the number of residues modelled with at most 2 atoms.

- Molecule 1 is a protein called Lysine-specific demethylase 6B.

Mol	Chain	Residues	Atoms						ZeroOcc	AltConf	Trace
1	A	448	Total	C	H	N	O	S	0	1	0
			3620	2293	16	625	667	19			
1	B	447	Total	C	H	N	O	S	0	1	0
			3612	2290	16	627	660	19			

There are 52 discrepancies between the modelled and reference sequences:

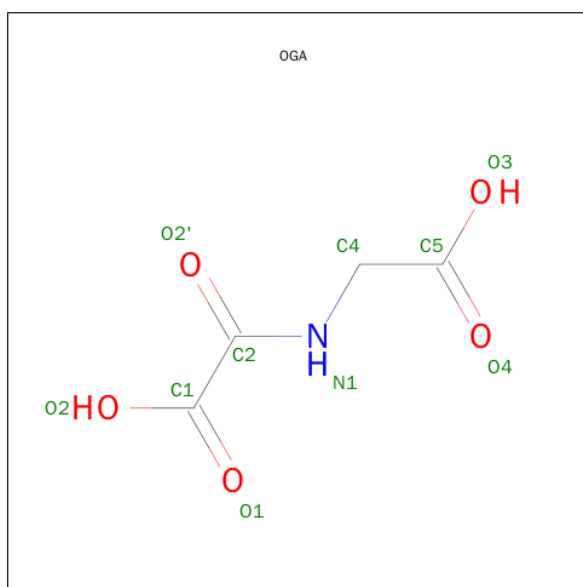
Chain	Residue	Modelled	Actual	Comment	Reference
A	1297	LEU	-	SEE REMARK 999	UNP Q5NCY0
A	1298	GLU	-	SEE REMARK 999	UNP Q5NCY0
A	1299	VAL	-	SEE REMARK 999	UNP Q5NCY0
A	1300	LEU	-	SEE REMARK 999	UNP Q5NCY0
A	1301	PHE	-	SEE REMARK 999	UNP Q5NCY0
A	1302	GLN	-	SEE REMARK 999	UNP Q5NCY0
A	1303	GLY	-	SEE REMARK 999	UNP Q5NCY0
A	1304	PRO	-	SEE REMARK 999	UNP Q5NCY0
A	1305	THR	-	SEE REMARK 999	UNP Q5NCY0
A	1306	LYS	-	SEE REMARK 999	UNP Q5NCY0
A	1307	ALA	-	SEE REMARK 999	UNP Q5NCY0
A	1308	ALA	-	SEE REMARK 999	UNP Q5NCY0
A	1309	ARG	-	SEE REMARK 999	UNP Q5NCY0
A	1310	LYS	-	SEE REMARK 999	UNP Q5NCY0
A	1311	SER	-	SEE REMARK 999	UNP Q5NCY0
A	1312	ALA	-	SEE REMARK 999	UNP Q5NCY0
A	1313	PRO	-	SEE REMARK 999	UNP Q5NCY0
A	1314	ALA	-	SEE REMARK 999	UNP Q5NCY0
A	1315	THR	-	SEE REMARK 999	UNP Q5NCY0
A	1316	GLY	-	SEE REMARK 999	UNP Q5NCY0
A	1317	GLY	-	SEE REMARK 999	UNP Q5NCY0
A	1318	GLY	-	SEE REMARK 999	UNP Q5NCY0
A	1319	SER	-	SEE REMARK 999	UNP Q5NCY0
A	1320	SER	-	SEE REMARK 999	UNP Q5NCY0
A	1321	GLY	-	SEE REMARK 999	UNP Q5NCY0

Continued on next page...

Continued from previous page...

Chain	Residue	Modelled	Actual	Comment	Reference
A	1322	SER	-	SEE REMARK 999	UNP Q5NCY0
B	1297	LEU	-	SEE REMARK 999	UNP Q5NCY0
B	1298	GLU	-	SEE REMARK 999	UNP Q5NCY0
B	1299	VAL	-	SEE REMARK 999	UNP Q5NCY0
B	1300	LEU	-	SEE REMARK 999	UNP Q5NCY0
B	1301	PHE	-	SEE REMARK 999	UNP Q5NCY0
B	1302	GLN	-	SEE REMARK 999	UNP Q5NCY0
B	1303	GLY	-	SEE REMARK 999	UNP Q5NCY0
B	1304	PRO	-	SEE REMARK 999	UNP Q5NCY0
B	1305	THR	-	SEE REMARK 999	UNP Q5NCY0
B	1306	LYS	-	SEE REMARK 999	UNP Q5NCY0
B	1307	ALA	-	SEE REMARK 999	UNP Q5NCY0
B	1308	ALA	-	SEE REMARK 999	UNP Q5NCY0
B	1309	ARG	-	SEE REMARK 999	UNP Q5NCY0
B	1310	LYS	-	SEE REMARK 999	UNP Q5NCY0
B	1311	SER	-	SEE REMARK 999	UNP Q5NCY0
B	1312	ALA	-	SEE REMARK 999	UNP Q5NCY0
B	1313	PRO	-	SEE REMARK 999	UNP Q5NCY0
B	1314	ALA	-	SEE REMARK 999	UNP Q5NCY0
B	1315	THR	-	SEE REMARK 999	UNP Q5NCY0
B	1316	GLY	-	SEE REMARK 999	UNP Q5NCY0
B	1317	GLY	-	SEE REMARK 999	UNP Q5NCY0
B	1318	GLY	-	SEE REMARK 999	UNP Q5NCY0
B	1319	SER	-	SEE REMARK 999	UNP Q5NCY0
B	1320	SER	-	SEE REMARK 999	UNP Q5NCY0
B	1321	GLY	-	SEE REMARK 999	UNP Q5NCY0
B	1322	SER	-	SEE REMARK 999	UNP Q5NCY0

- Molecule 2 is N-OXALYLGLYCINE (three-letter code: OGA) (formula: C₄H₅NO₅).



Mol	Chain	Residues	Atoms				ZeroOcc	AltConf
2	A	1	Total	C	N	O	0	0
			10	4	1	5		
2	B	1	Total	C	N	O	0	0
			10	4	1	5		

- Molecule 3 is NICKEL (II) ION (three-letter code: NI) (formula: Ni).

Mol	Chain	Residues	Atoms		ZeroOcc	AltConf
3	B	1	Total	Ni	0	0
			1	1		
3	A	1	Total	Ni	0	0
			1	1		

- Molecule 4 is ZINC ION (three-letter code: ZN) (formula: Zn).

Mol	Chain	Residues	Atoms		ZeroOcc	AltConf
4	B	1	Total	Zn	0	0
			1	1		
4	A	1	Total	Zn	0	0
			1	1		

- Molecule 5 is water.

Mol	Chain	Residues	Atoms		ZeroOcc	AltConf
5	A	5	Total	O	0	0
			5	5		

Continued on next page...

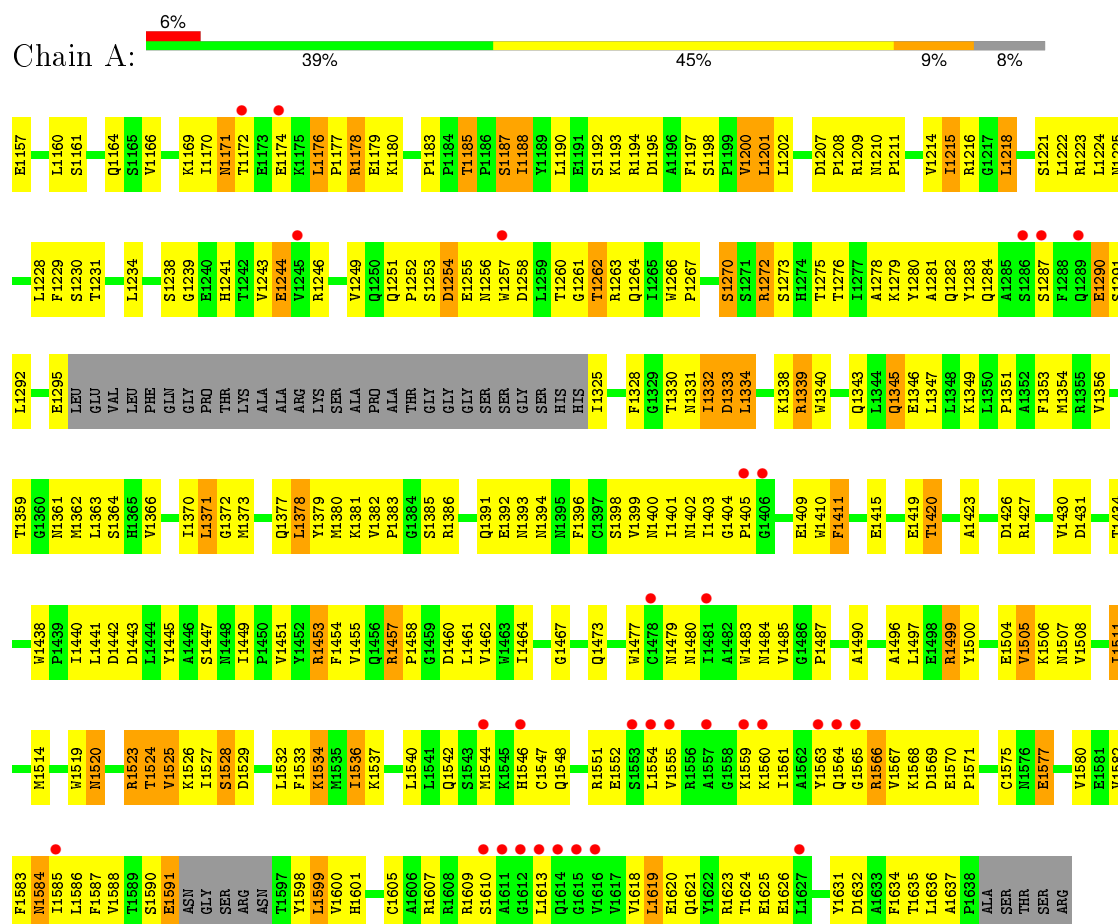
Continued from previous page...

Mol	Chain	Residues	Atoms		ZeroOcc	AltConf
5	B	7	Total	O	0	0
			7	7		

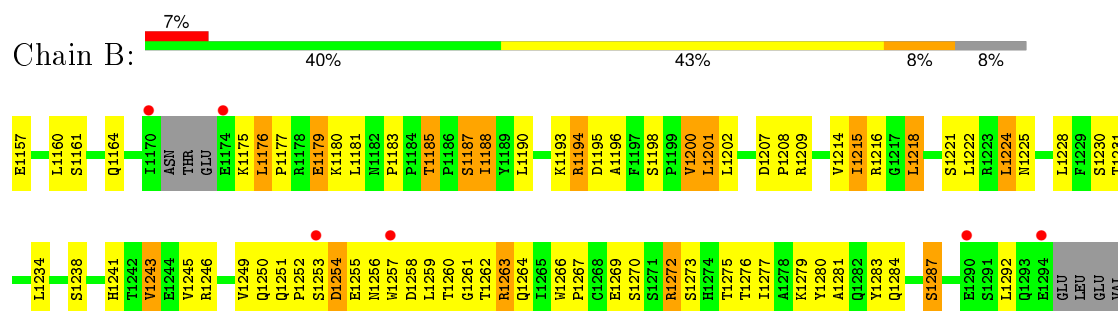
3 Residue-property plots

These plots are drawn for all protein, RNA and DNA chains in the entry. The first graphic for a chain summarises the proportions of errors displayed in the second graphic. The second graphic shows the sequence view annotated by issues in geometry and electron density. Residues are color-coded according to the number of geometric quality criteria for which they contain at least one outlier: green = 0, yellow = 1, orange = 2 and red = 3 or more. A red dot above a residue indicates a poor fit to the electron density ($RSRZ > 2$). Stretches of 2 or more consecutive residues without any outlier are shown as a green connector. Residues present in the sample, but not in the model, are shown in grey.

• Molecule 1: Lysine-specific demethylase 6B



• Molecule 1: Lysine-specific demethylase 6B



WORLDWIDE
PDB
PROTEIN DATA BANK

4 Data and refinement statistics

Property	Value	Source
Space group	P 1 21 1	Depositor
Cell constants a, b, c, α , β , γ	57.66Å 123.71Å 82.04Å 90.00° 109.62° 90.00°	Depositor
Resolution (Å)	49.73 – 2.99 49.73 – 2.99	Depositor EDS
% Data completeness (in resolution range)	95.6 (49.73-2.99) 95.7 (49.73-2.99)	Depositor EDS
R_{merge}	0.12	Depositor
R_{sym}	0.13	Depositor
$\langle I/\sigma(I) \rangle$ ¹	3.11 (at 3.01Å)	Xtriage
Refinement program	PHENIX (PHENIX.REFINE: 1.7.1_743)	Depositor
R, R_{free}	0.190 , 0.250 0.219 , 0.264	Depositor DCC
R_{free} test set	1079 reflections (5.42%)	DCC
Wilson B-factor (Å ²)	53.0	Xtriage
Anisotropy	0.344	Xtriage
Bulk solvent k_{sol} (e/Å ³), B_{sol} (Å ²)	0.27 , 49.9	EDS
Estimated twinning fraction	0.038 for h,-k,-h-l	Xtriage
L-test for twinning ²	$\langle L \rangle = 0.46$, $\langle L^2 \rangle = 0.29$	Xtriage
Outliers	0 of 20977 reflections	Xtriage
F_o, F_c correlation	0.90	EDS
Total number of atoms	7268	wwPDB-VP
Average B, all atoms (Å ²)	62.0	wwPDB-VP

Xtriage's analysis on translational NCS is as follows: *The analyses of the Patterson function reveals a significant off-origin peak that is 25.72 % of the origin peak, indicating pseudo translational symmetry. The chance of finding a peak of this or larger height randomly in a structure without pseudo translational symmetry is equal to 3.0056e-03. The detected translational NCS is most likely also responsible for the elevated intensity ratio.*

¹Intensities estimated from amplitudes.

²Theoretical values of $\langle |L| \rangle$, $\langle L^2 \rangle$ for acentric reflections are 0.5, 0.375 respectively for untwinned datasets, and 0.333, 0.2 for perfectly twinned datasets.

5 Model quality [i](#)

5.1 Standard geometry [i](#)

Bond lengths and bond angles in the following residue types are not validated in this section: NI, ZN, OGA

The Z score for a bond length (or angle) is the number of standard deviations the observed value is removed from the expected value. A bond length (or angle) with $|Z| > 5$ is considered an outlier worth inspection. RMSZ is the root-mean-square of all Z scores of the bond lengths (or angles).

Mol	Chain	Bond lengths		Bond angles	
		RMSZ	$\# Z > 5$	RMSZ	$\# Z > 5$
1	A	0.51	0/3700	0.69	1/5035 (0.0%)
1	B	0.52	1/3693 (0.0%)	0.70	1/5024 (0.0%)
All	All	0.52	1/7393 (0.0%)	0.69	2/10059 (0.0%)

All (1) bond length outliers are listed below:

Mol	Chain	Res	Type	Atoms	Z	Observed(Å)	Ideal(Å)
1	B	1361	ASN	CG-OD1	-5.02	1.12	1.24

All (2) bond angle outliers are listed below:

Mol	Chain	Res	Type	Atoms	Z	Observed(°)	Ideal(°)
1	B	1333	ASP	CB-CG-OD2	-5.97	112.93	118.30
1	A	1334	LEU	CA-CB-CG	-5.17	103.40	115.30

There are no chirality outliers.

There are no planarity outliers.

5.2 Too-close contacts [i](#)

In the following table, the Non-H and H(model) columns list the number of non-hydrogen atoms and hydrogen atoms in the chain respectively. The H(added) column lists the number of hydrogen atoms added and optimized by MolProbity. The Clashes column lists the number of clashes within the asymmetric unit, whereas Symm-Clashes lists symmetry related clashes.

Mol	Chain	Non-H	H(model)	H(added)	Clashes	Symm-Clashes
1	A	3604	16	3524	364	0
1	B	3596	16	3517	374	0
2	A	10	0	3	2	0

Continued on next page...

Continued from previous page...

Mol	Chain	Non-H	H(model)	H(added)	Clashes	Symm-Clashes
2	B	10	0	3	1	0
3	A	1	0	0	0	0
3	B	1	0	0	0	0
4	A	1	0	0	0	0
4	B	1	0	0	0	0
5	A	5	0	0	0	0
5	B	7	0	0	0	0
All	All	7236	32	7047	713	0

The all-atom clashscore is defined as the number of clashes found per 1000 atoms (including hydrogen atoms). The all-atom clashscore for this structure is 50.

The worst 5 of 713 close contacts within the same asymmetric unit are listed below, sorted by their clash magnitude.

Atom-1	Atom-2	Interatomic distance (Å)	Clash overlap (Å)
1:A:1193:LYS:CE	1:B:1578:CYS:HA	1.53	1.38
1:B:1568:LYS:CA	1:B:1568:LYS:HE3	1.41	1.37
1:A:1215:ILE:O	1:A:1215:ILE:HD12	1.17	1.32
1:B:1215:ILE:HD12	1:B:1215:ILE:O	1.21	1.27
1:A:1339:ARG:HH11	1:A:1339:ARG:CB	1.46	1.26

There are no symmetry-related clashes.

5.3 Torsion angles [i](#)

5.3.1 Protein backbone [i](#)

In the following table, the Percentiles column shows the percent Ramachandran outliers of the chain as a percentile score with respect to all X-ray entries followed by that with respect to entries of similar resolution.

The Analysed column shows the number of residues for which the backbone conformation was analysed, and the total number of residues.

Mol	Chain	Analysed	Favoured	Allowed	Outliers	Percentiles	
1	A	443/486 (91%)	420 (95%)	23 (5%)	0	100	100
1	B	440/486 (90%)	421 (96%)	19 (4%)	0	100	100
All	All	883/972 (91%)	841 (95%)	42 (5%)	0	100	100

There are no Ramachandran outliers to report.

5.3.2 Protein sidechains ⓘ

In the following table, the Percentiles column shows the percent sidechain outliers of the chain as a percentile score with respect to all X-ray entries followed by that with respect to entries of similar resolution.

The Analysed column shows the number of residues for which the sidechain conformation was analysed, and the total number of residues.

Mol	Chain	Analysed	Rotameric	Outliers	Percentiles	
1	A	398/424 (94%)	334 (84%)	64 (16%)	3	14
1	B	396/424 (93%)	335 (85%)	61 (15%)	3	16
All	All	794/848 (94%)	669 (84%)	125 (16%)	3	15

5 of 125 residues with a non-rotameric sidechain are listed below:

Mol	Chain	Res	Type
1	A	1577	GLU
1	B	1188	ILE
1	B	1564	GLN
1	A	1591	GLU
1	A	1635	THR

Some sidechains can be flipped to improve hydrogen bonding and reduce clashes. 5 of 16 such sidechains are listed below:

Mol	Chain	Res	Type
1	A	1584	ASN
1	A	1621	GLN
1	B	1473	GLN
1	A	1473	GLN
1	B	1507	ASN

5.3.3 RNA ⓘ

There are no RNA molecules in this entry.

5.4 Non-standard residues in protein, DNA, RNA chains ⓘ

There are no non-standard protein/DNA/RNA residues in this entry.

5.5 Carbohydrates

There are no carbohydrates in this entry.

5.6 Ligand geometry

Of 6 ligands modelled in this entry, 4 are monoatomic - leaving 2 for Mogul analysis.

In the following table, the Counts columns list the number of bonds (or angles) for which Mogul statistics could be retrieved, the number of bonds (or angles) that are observed in the model and the number of bonds (or angles) that are defined in the chemical component dictionary. The Link column lists molecule types, if any, to which the group is linked. The Z score for a bond length (or angle) is the number of standard deviations the observed value is removed from the expected value. A bond length (or angle) with $|Z| > 2$ is considered an outlier worth inspection. RMSZ is the root-mean-square of all Z scores of the bond lengths (or angles).

Mol	Type	Chain	Res	Link	Bond lengths			Bond angles		
					Counts	RMSZ	$\# Z > 2$	Counts	RMSZ	$\# Z > 2$
2	OGA	A	1701	3	3,9,9	0.46	0	3,11,11	0.60	0
2	OGA	B	1701	3	3,9,9	0.41	0	3,11,11	0.74	0

In the following table, the Chirals column lists the number of chiral outliers, the number of chiral centers analysed, the number of these observed in the model and the number defined in the chemical component dictionary. Similar counts are reported in the Torsion and Rings columns. '-' means no outliers of that kind were identified.

Mol	Type	Chain	Res	Link	Chirals	Torsions	Rings
2	OGA	A	1701	3	-	0/3/9/9	0/0/0/0
2	OGA	B	1701	3	-	0/3/9/9	0/0/0/0

There are no bond length outliers.

There are no bond angle outliers.

There are no chirality outliers.

There are no torsion outliers.

There are no ring outliers.

2 monomers are involved in 3 short contacts:

Mol	Chain	Res	Type	Clashes	Symm-Clashes
2	A	1701	OGA	2	0
2	B	1701	OGA	1	0

5.7 Other polymers [i](#)

There are no such residues in this entry.

5.8 Polymer linkage issues [i](#)

There are no chain breaks in this entry.

6 Fit of model and data [i](#)

6.1 Protein, DNA and RNA chains [i](#)

In the following table, the column labelled ‘#RSRZ> 2’ contains the number (and percentage) of RSRZ outliers, followed by percent RSRZ outliers for the chain as percentile scores relative to all X-ray entries and entries of similar resolution. The OWAB column contains the minimum, median, 95th percentile and maximum values of the occupancy-weighted average B-factor per residue. The column labelled ‘Q< 0.9’ lists the number of (and percentage) of residues with an average occupancy less than 0.9.

Mol	Chain	Analysed	<RSRZ>	#RSRZ>2		OWAB(Å ²)	Q<0.9
1	A	448/486 (92%)	0.32	31 (6%)	20 7	24, 58, 98, 141	0
1	B	447/486 (91%)	0.23	36 (8%)	15 5	26, 57, 100, 148	0
All	All	895/972 (92%)	0.28	67 (7%)	17 6	24, 57, 100, 148	0

The worst 5 of 67 RSRZ outliers are listed below:

Mol	Chain	Res	Type	RSRZ
1	B	1613	LEU	7.1
1	A	1613	LEU	6.9
1	B	1614	GLN	5.2
1	A	1612	GLY	4.8
1	B	1610	SER	4.7

6.2 Non-standard residues in protein, DNA, RNA chains [i](#)

There are no non-standard protein/DNA/RNA residues in this entry.

6.3 Carbohydrates [i](#)

There are no carbohydrates in this entry.

6.4 Ligands [i](#)

In the following table, the Atoms column lists the number of modelled atoms in the group and the number defined in the chemical component dictionary. LLDF column lists the quality of electron density of the group with respect to its neighbouring residues in protein, DNA or RNA chains. The B-factors column lists the minimum, median, 95th percentile and maximum values of B factors of atoms in the group. The column labelled ‘Q< 0.9’ lists the number of atoms with occupancy less than 0.9.

Mol	Type	Chain	Res	Atoms	RSCC	RSR	LLDF	B-factors(\AA^2)	Q<0.9
2	OGA	A	1701	10/10	0.92	0.28	1.30	41,60,68,86	0
2	OGA	B	1701	10/10	0.92	0.22	0.93	20,20,20,20	0
4	ZN	B	1703	1/1	0.97	0.13	-0.49	73,73,73,73	0
4	ZN	A	1703	1/1	0.99	0.05	-2.35	67,67,67,67	0
3	NI	A	1702	1/1	0.95	0.20	-	46,46,46,46	0
3	NI	B	1702	1/1	0.97	0.21	-	41,41,41,41	0

6.5 Other polymers [i](#)

There are no such residues in this entry.