



wwPDB X-ray Structure Validation Summary Report ⓘ

Mar 22, 2016 – 07:32 AM EDT

PDB ID : 5EZ1
Title : Crystal Structure of Cell Binding Factor 2 from Helicobacter pylori in complex with I2CA
Authors : Sun, Y.J.; Chu, C.H.; Tsai, Y.C.
Deposited on : 2015-11-26
Resolution : 2.40 Å(reported)

This is a wwPDB X-ray Structure Validation Summary Report for a publicly released PDB entry.
We welcome your comments at validation@mail.wwpdb.org
A user guide is available at
<http://wwpdb.org/validation/2016/XrayValidationReportHelp>
with specific help available everywhere you see the ⓘ symbol.

The following versions of software and data (see [references ⓘ](#)) were used in the production of this report:

MolProbity : 4.02b-467
Mogul : 1.7.1 (RC1), CSD as537be (2016)
Xtriage (Phenix) : 1.9-1692
EDS : rb-20027107
Percentile statistics : 20151230.v01 (using entries in the PDB archive December 30th 2015)
Refmac : 5.8.0122
CCP4 : 6.5.0
Ideal geometry (proteins) : Engh & Huber (2001)
Ideal geometry (DNA, RNA) : Parkinson et al. (1996)
Validation Pipeline (wwPDB-VP) : rb-20027107

i

X-RAY DIFFRACTION

A.



R_{free}	91344	2919 (2.40-2.40)
Clashscore	102246	3407 (2.40-2.40)
Ramachandran outliers	100387	3351 (2.40-2.40)
Sidechain outliers	100360	3352 (2.40-2.40)
RSRZ outliers	91569	2928 (2.40-2.40)

1	A	277	
1	B	277	

Mol	Type	Chain	Res	Chirality	Geometry	Clashes	Electron density
2	ICB	A	401	-	-	-	X
2	ICB	B	401	-	-	-	X

2 Entry composition

There are 3 unique types of molecules in this entry. The entry contains 3935 atoms, of which 0 are hydrogens and 0 are deuteriums.

In the tables below, the ZeroOcc column contains the number of atoms modelled with zero occupancy, the AltConf column contains the number of residues with at least one atom in alternate conformation and the Trace column contains the number of residues modelled with at most 2 atoms.

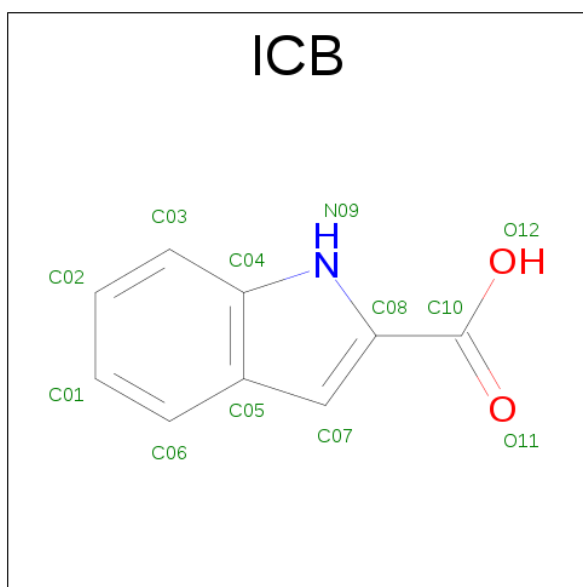
- Molecule 1 is a protein called Putative peptidyl-prolyl cis-trans isomerase HP_0175.

Mol	Chain	Residues	Atoms					ZeroOcc	AltConf	Trace
1	A	231	Total	C	N	O	S	0	0	0
			1876	1190	320	359	7			
1	B	232	Total	C	N	O	S	0	0	0
			1884	1196	321	360	7			

There are 20 discrepancies between the modelled and reference sequences:

Chain	Residue	Modelled	Actual	Comment	Reference
A	31	MET	-	expression tag	UNP P56112
A	32	GLY	-	expression tag	UNP P56112
A	300	LEU	-	expression tag	UNP P56112
A	301	GLU	-	expression tag	UNP P56112
A	302	HIS	-	expression tag	UNP P56112
A	303	HIS	-	expression tag	UNP P56112
A	304	HIS	-	expression tag	UNP P56112
A	305	HIS	-	expression tag	UNP P56112
A	306	HIS	-	expression tag	UNP P56112
A	307	HIS	-	expression tag	UNP P56112
B	31	MET	-	expression tag	UNP P56112
B	32	GLY	-	expression tag	UNP P56112
B	300	LEU	-	expression tag	UNP P56112
B	301	GLU	-	expression tag	UNP P56112
B	302	HIS	-	expression tag	UNP P56112
B	303	HIS	-	expression tag	UNP P56112
B	304	HIS	-	expression tag	UNP P56112
B	305	HIS	-	expression tag	UNP P56112
B	306	HIS	-	expression tag	UNP P56112
B	307	HIS	-	expression tag	UNP P56112

- Molecule 2 is 1H-indole-2-carboxylic acid (three-letter code: ICB) (formula: C₉H₇NO₂).



Mol	Chain	Residues	Atoms				ZeroOcc	AltConf
2	A	1	Total	C	N	O	0	0
			12	9	1	2		
2	B	1	Total	C	N	O	0	0
			12	9	1	2		

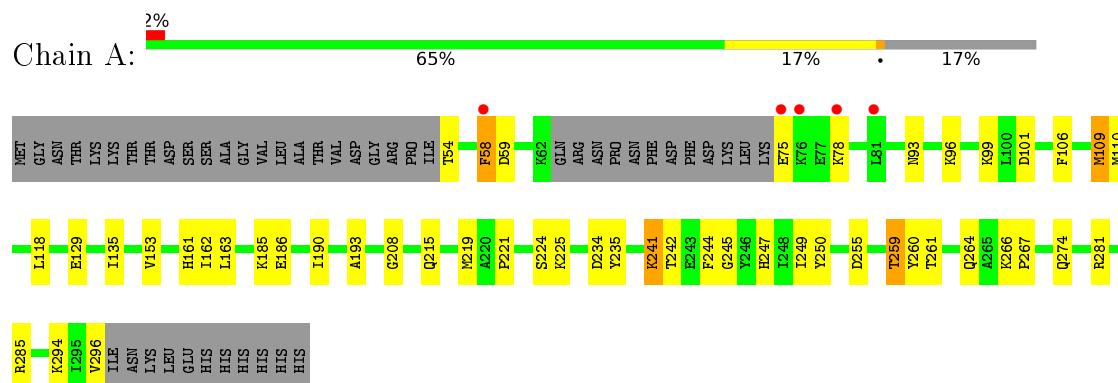
- Molecule 3 is water.

Mol	Chain	Residues	Atoms		ZeroOcc	AltConf
3	A	78	Total	O	0	0
			78	78		
3	B	73	Total	O	0	0
			73	73		

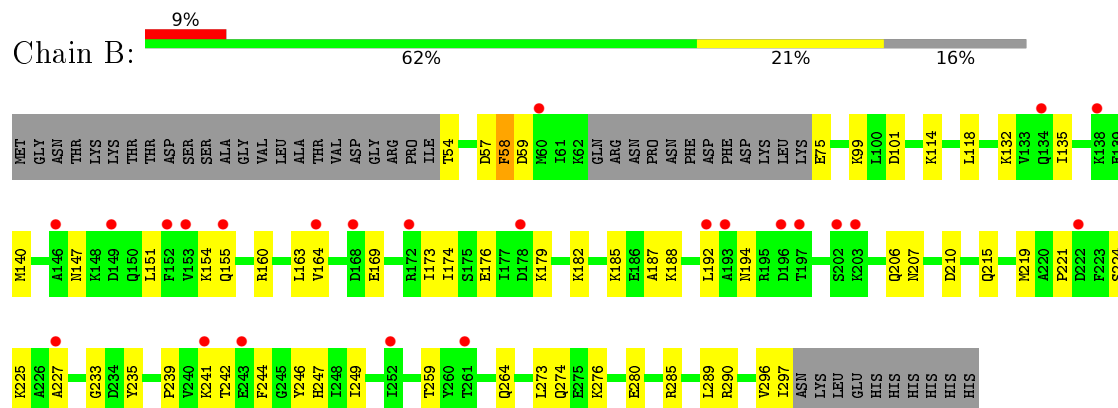
3 Residue-property plots [i](#)

These plots are drawn for all protein, RNA and DNA chains in the entry. The first graphic for a chain summarises the proportions of errors displayed in the second graphic. The second graphic shows the sequence view annotated by issues in geometry and electron density. Residues are color-coded according to the number of geometric quality criteria for which they contain at least one outlier: green = 0, yellow = 1, orange = 2 and red = 3 or more. A red dot above a residue indicates a poor fit to the electron density ($RSRZ > 2$). Stretches of 2 or more consecutive residues without any outlier are shown as a green connector. Residues present in the sample, but not in the model, are shown in grey.

- Molecule 1: Putative peptidyl-prolyl cis-trans isomerase HP_0175



- Molecule 1: Putative peptidyl-prolyl cis-trans isomerase HP_0175



4 Data and refinement statistics

Property	Value	Source
Space group	P 31 2 1	Depositor
Cell constants a, b, c, α , β , γ	62.00 Å 62.00 Å 366.43 Å 90.00° 90.00° 120.00°	Depositor
Resolution (Å)	26.67 – 2.40 29.36 – 2.40	Depositor EDS
% Data completeness (in resolution range)	89.6 (26.67-2.40) 91.7 (29.36-2.40)	Depositor EDS
R_{merge}	(Not available)	Depositor
R_{sym}	(Not available)	Depositor
$\langle I/\sigma(I) \rangle$ ¹	2.52 (at 2.39 Å)	Xtriage
Refinement program	PHENIX (phenix.refine: 1.8.1_1168)	Depositor
R, R_{free}	0.244 , 0.299 0.250 , 0.306	Depositor DCC
R_{free} test set	1570 reflections (5.13%)	DCC
Wilson B-factor (Å ²)	35.0	Xtriage
Anisotropy	0.016	Xtriage
Bulk solvent k_{sol} (e/Å ³), B_{sol} (Å ²)	0.31 , 37.5	EDS
Estimated twinning fraction	0.046 for -h,-k,l	Xtriage
L-test for twinning ²	$\langle L \rangle = 0.48$, $\langle L^2 \rangle = 0.30$	Xtriage
Outliers	0 of 30615 reflections	Xtriage
F_o, F_c correlation	0.89	EDS
Total number of atoms	3935	wwPDB-VP
Average B, all atoms (Å ²)	61.0	wwPDB-VP

Xtriage's analysis on translational NCS is as follows: *The largest off-origin peak in the Patterson function is 4.85% of the height of the origin peak. No significant pseudotranslation is detected.*

¹Intensities estimated from amplitudes.

²Theoretical values of $\langle |L| \rangle$, $\langle L^2 \rangle$ for acentric reflections are 0.5, 0.375 respectively for untwinned datasets, and 0.333, 0.2 for perfectly twinned datasets.

5 Model quality

5.1 Standard geometry

Bond lengths and bond angles in the following residue types are not validated in this section: ICB

The Z score for a bond length (or angle) is the number of standard deviations the observed value is removed from the expected value. A bond length (or angle) with $|Z| > 5$ is considered an outlier worth inspection. RMSZ is the root-mean-square of all Z scores of the bond lengths (or angles).

Mol	Chain	Bond lengths		Bond angles	
		RMSZ	$\# Z > 5$	RMSZ	$\# Z > 5$
1	A	0.52	0/1906	0.63	0/2551
1	B	0.44	0/1914	0.62	0/2562
All	All	0.48	0/3820	0.63	0/5113

There are no bond length outliers.

There are no bond angle outliers.

There are no chirality outliers.

There are no planarity outliers.

5.2 Too-close contacts

In the following table, the Non-H and H(model) columns list the number of non-hydrogen atoms and hydrogen atoms in the chain respectively. The H(added) column lists the number of hydrogen atoms added and optimized by MolProbity. The Clashes column lists the number of clashes within the asymmetric unit, whereas Symm-Clashes lists symmetry related clashes.

Mol	Chain	Non-H	H(model)	H(added)	Clashes	Symm-Clashes
1	A	1876	0	1909	40	0
1	B	1884	0	1920	49	0
2	A	12	0	0	0	0
2	B	12	0	0	0	0
3	A	78	0	0	11	1
3	B	73	0	0	16	1
All	All	3935	0	3829	82	1

The all-atom clashscore is defined as the number of clashes found per 1000 atoms (including hydrogen atoms). The all-atom clashscore for this structure is 11.

The worst 5 of 82 close contacts within the same asymmetric unit are listed below, sorted by their

clash magnitude.

Atom-1	Atom-2	Interatomic distance (Å)	Clash overlap (Å)
1:B:206:GLN:NE2	3:B:504:HOH:O	2.04	0.91
1:A:244:PHE:O	3:A:501:HOH:O	1.92	0.87
1:B:182:LYS:HA	1:B:185:LYS:HD3	1.60	0.84
1:B:290:ARG:NH1	3:B:502:HOH:O	1.99	0.83
1:B:173:ILE:HG23	1:B:192:LEU:HD23	1.62	0.80

All (1) symmetry-related close contacts are listed below. The label for Atom-2 includes the symmetry operator and encoded unit-cell translations to be applied.

Atom-1	Atom-2	Interatomic distance (Å)	Clash overlap (Å)
3:A:544:HOH:O	3:B:560:HOH:O[4_555]	2.18	0.02

5.3 Torsion angles [i](#)

5.3.1 Protein backbone [i](#)

In the following table, the Percentiles column shows the percent Ramachandran outliers of the chain as a percentile score with respect to all X-ray entries followed by that with respect to entries of similar resolution.

The Analysed column shows the number of residues for which the backbone conformation was analysed, and the total number of residues.

Mol	Chain	Analysed	Favoured	Allowed	Outliers	Percentiles	
1	A	227/277 (82%)	225 (99%)	2 (1%)	0	100	100
1	B	228/277 (82%)	225 (99%)	3 (1%)	0	100	100
All	All	455/554 (82%)	450 (99%)	5 (1%)	0	100	100

There are no Ramachandran outliers to report.

5.3.2 Protein sidechains [i](#)

In the following table, the Percentiles column shows the percent sidechain outliers of the chain as a percentile score with respect to all X-ray entries followed by that with respect to entries of similar resolution.

The Analysed column shows the number of residues for which the sidechain conformation was analysed, and the total number of residues.

Mol	Chain	Analysed	Rotameric	Outliers	Percentiles	
1	A	202/243 (83%)	196 (97%)	6 (3%)	48	70
1	B	203/243 (84%)	198 (98%)	5 (2%)	55	76
All	All	405/486 (83%)	394 (97%)	11 (3%)	52	73

5 of 11 residues with a non-rotameric sidechain are listed below:

Mol	Chain	Res	Type
1	A	241	LYS
1	A	259	THR
1	B	132	LYS
1	A	153	VAL
1	B	59	ASP

Some sidechains can be flipped to improve hydrogen bonding and reduce clashes. All (3) such sidechains are listed below:

Mol	Chain	Res	Type
1	A	161	HIS
1	B	161	HIS
1	B	247	HIS

5.3.3 RNA [i](#)

There are no RNA molecules in this entry.

5.4 Non-standard residues in protein, DNA, RNA chains [i](#)

There are no non-standard protein/DNA/RNA residues in this entry.

5.5 Carbohydrates [i](#)

There are no carbohydrates in this entry.

5.6 Ligand geometry [i](#)

2 ligands are modelled in this entry.

In the following table, the Counts columns list the number of bonds (or angles) for which Mogul statistics could be retrieved, the number of bonds (or angles) that are observed in the model and the number of bonds (or angles) that are defined in the chemical component dictionary. The Link

column lists molecule types, if any, to which the group is linked. The Z score for a bond length (or angle) is the number of standard deviations the observed value is removed from the expected value. A bond length (or angle) with $|Z| > 2$ is considered an outlier worth inspection. RMSZ is the root-mean-square of all Z scores of the bond lengths (or angles).

Mol	Type	Chain	Res	Link	Bond lengths			Bond angles		
					Counts	RMSZ	$\# Z > 2$	Counts	RMSZ	$\# Z > 2$
2	ICB	A	401	-	9,13,13	0.82	0	10,18,18	1.04	1 (10%)
2	ICB	B	401	-	9,13,13	0.76	0	10,18,18	0.87	1 (10%)

In the following table, the Chirals column lists the number of chiral outliers, the number of chiral centers analysed, the number of these observed in the model and the number defined in the chemical component dictionary. Similar counts are reported in the Torsion and Rings columns. '-' means no outliers of that kind were identified.

Mol	Type	Chain	Res	Link	Chirals	Torsions	Rings
2	ICB	A	401	-	-	0/0/4/4	0/2/2/2
2	ICB	B	401	-	-	0/0/4/4	0/2/2/2

There are no bond length outliers.

All (2) bond angle outliers are listed below:

Mol	Chain	Res	Type	Atoms	Z	Observed(°)	Ideal(°)
2	B	401	ICB	C08-N09-C04	2.58	109.78	104.47
2	A	401	ICB	C08-N09-C04	2.87	110.39	104.47

There are no chirality outliers.

There are no torsion outliers.

There are no ring outliers.

No monomer is involved in short contacts.

5.7 Other polymers [i](#)

There are no such residues in this entry.

5.8 Polymer linkage issues [i](#)

There are no chain breaks in this entry.

6 Fit of model and data [i](#)

6.1 Protein, DNA and RNA chains [i](#)

In the following table, the column labelled ‘#RSRZ> 2’ contains the number (and percentage) of RSRZ outliers, followed by percent RSRZ outliers for the chain as percentile scores relative to all X-ray entries and entries of similar resolution. The OWAB column contains the minimum, median, 95th percentile and maximum values of the occupancy-weighted average B-factor per residue. The column labelled ‘Q< 0.9’ lists the number of (and percentage) of residues with an average occupancy less than 0.9.

Mol	Chain	Analysed	<RSRZ>	#RSRZ>2	OWAB(Å ²)	Q<0.9
1	A	231/277 (83%)	-0.27	5 (2%) 65 64	15, 40, 89, 141	0
1	B	232/277 (83%)	0.50	24 (10%) 9 8	33, 75, 116, 145	0
All	All	463/554 (83%)	0.11	29 (6%) 23 24	15, 59, 105, 145	0

The worst 5 of 29 RSRZ outliers are listed below:

Mol	Chain	Res	Type	RSRZ
1	B	196	ASP	5.0
1	B	152	PHE	4.1
1	B	241	LYS	3.4
1	B	153	VAL	3.1
1	B	197	THR	3.1

6.2 Non-standard residues in protein, DNA, RNA chains [i](#)

There are no non-standard protein/DNA/RNA residues in this entry.

6.3 Carbohydrates [i](#)

There are no carbohydrates in this entry.

6.4 Ligands [i](#)

In the following table, the Atoms column lists the number of modelled atoms in the group and the number defined in the chemical component dictionary. LLDF column lists the quality of electron density of the group with respect to its neighbouring residues in protein, DNA or RNA chains. The B-factors column lists the minimum, median, 95th percentile and maximum values of B factors of atoms in the group. The column labelled ‘Q< 0.9’ lists the number of atoms with occupancy less than 0.9.

Mol	Type	Chain	Res	Atoms	RSCC	RSR	LLDF	B-factors(\AA^2)	Q<0.9
2	ICB	A	401	12/12	0.75	0.57	21.71	73,85,101,101	0
2	ICB	B	401	12/12	0.67	0.66	10.57	78,93,114,120	0

6.5 Other polymers [i](#)

There are no such residues in this entry.