



Full wwPDB X-ray Structure Validation Report ⓘ

Feb 1, 2016 – 04:27 PM GMT

PDB ID : 4F1L
Title : Human Artd8 (Parp14, Bal2) - catalytic domain in complex with inhibitor A16(Z)
Authors : Karlberg, T.; Andersson, C.D.; Lindgren, A.; Spjut, S.; Thorsell, A.G.; Ekblad, T.; Weigelt, J.; Elofsson, M.; Linusson, A.; Schuler, H.
Deposited on : 2012-05-07
Resolution : 1.90 Å(reported)

This is a Full wwPDB X-ray Structure Validation Report for a publicly released PDB entry.
We welcome your comments at validation@mail.wwpdb.org
A user guide is available at
<http://wwpdb.org/validation/2016/XrayValidationReportHelp>
with specific help available everywhere you see the ⓘ symbol.

The following versions of software and data (see [references ⓘ](#)) were used in the production of this report:

MolProbity : 4.02b-467
Mogul : 1.7 (RC4), CSD as536be (2015)
Xtriage (Phenix) : 1.9-1692
EDS : rb-20026688
Percentile statistics : 20151230.v01 (using entries in the PDB archive December 30th 2015)
Refmac : 5.8.0135
CCP4 : 6.5.0
Ideal geometry (proteins) : Engh & Huber (2001)
Ideal geometry (DNA, RNA) : Parkinson et al. (1996)
Validation Pipeline (wwPDB-VP) : trunk26865

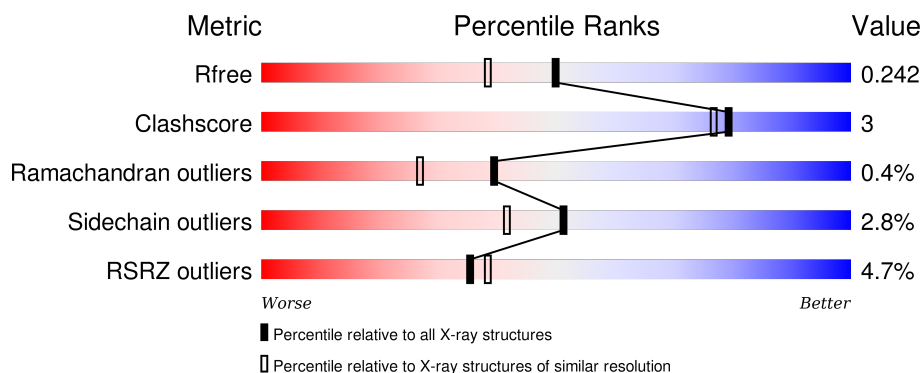
1 Overall quality at a glance ⓘ

The following experimental techniques were used to determine the structure:

X-RAY DIFFRACTION

The reported resolution of this entry is 1.90 Å.

Percentile scores (ranging between 0-100) for global validation metrics of the entry are shown in the following graphic. The table shows the number of entries on which the scores are based.



Metric	Whole archive (#Entries)	Similar resolution (#Entries, resolution range(Å))
R_{free}	91344	4755 (1.90-1.90)
Clashscore	102246	5398 (1.90-1.90)
Ramachandran outliers	100387	5338 (1.90-1.90)
Sidechain outliers	100360	5339 (1.90-1.90)
RSRZ outliers	91569	4766 (1.90-1.90)

The table below summarises the geometric issues observed across the polymeric chains and their fit to the electron density. The red, orange, yellow and green segments on the lower bar indicate the fraction of residues that contain outliers for ≥ 3 , 2, 1 and 0 types of geometric quality criteria. A grey segment represents the fraction of residues that are not modelled. The numeric value for each fraction is indicated below the corresponding segment, with a dot representing fractions $\leq 5\%$. The upper red bar (where present) indicates the fraction of residues that have poor fit to the electron density. The numeric value is given above the bar.

Mol	Chain	Length	Quality of chain
1	A	193	<div> <div>3%</div> <div>92%</div> <div>5%</div> </div>
1	B	193	<div> <div>8%</div> <div>85%</div> <div>7%</div> <div>6%</div> </div>
1	C	193	<div> <div>4%</div> <div>90%</div> <div>5%</div> </div>
1	D	193	<div> <div>4%</div> <div>85%</div> <div>9%</div> </div>

The following table lists non-polymeric compounds, carbohydrate monomers and non-standard

residues in protein, DNA, RNA chains that are outliers for geometric or electron-density-fit criteria:

Mol	Type	Chain	Res	Chirality	Geometry	Clashes	Electron density
3	NO3	A	1802	-	X	-	-
3	NO3	C	1802	-	X	-	-

2 Entry composition

There are 4 unique types of molecules in this entry. The entry contains 6320 atoms, of which 0 are hydrogens and 0 are deuteriums.

In the tables below, the ZeroOcc column contains the number of atoms modelled with zero occupancy, the AltConf column contains the number of residues with at least one atom in alternate conformation and the Trace column contains the number of residues modelled with at most 2 atoms.

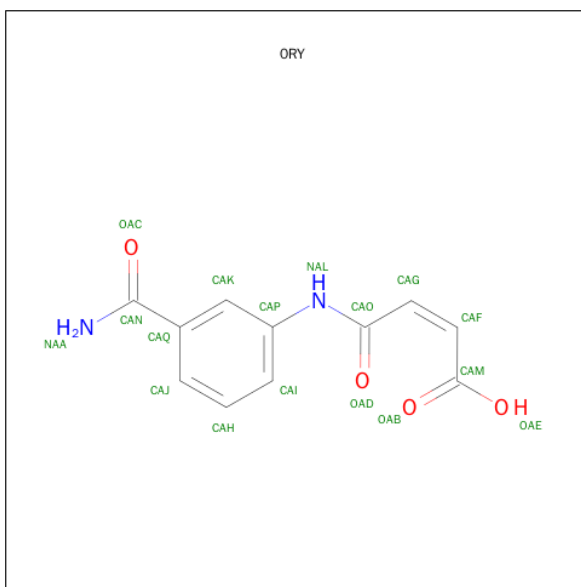
- Molecule 1 is a protein called Poly [ADP-ribose] polymerase 14.

Mol	Chain	Residues	Atoms					ZeroOcc	AltConf	Trace
1	A	187	Total	C	N	O	S	0	1	0
			1513	957	266	286	4			
1	B	181	Total	C	N	O	S	0	1	0
			1479	935	262	278	4			
1	C	187	Total	C	N	O	S	0	0	0
			1512	956	267	285	4			
1	D	185	Total	C	N	O	S	0	0	0
			1495	946	263	282	4			

There are 8 discrepancies between the modelled and reference sequences:

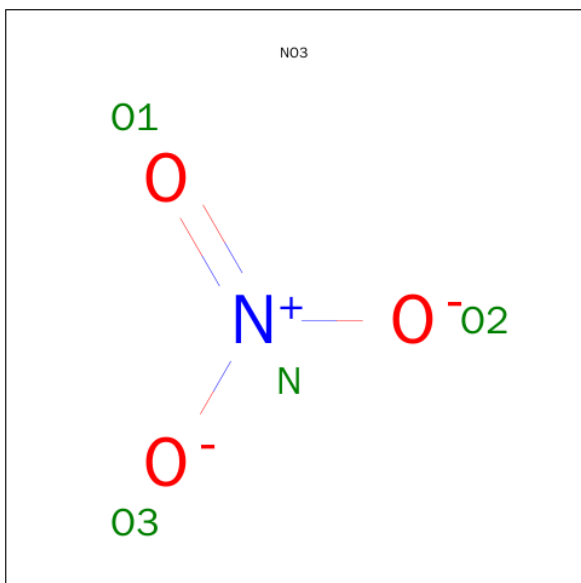
Chain	Residue	Modelled	Actual	Comment	Reference
A	1528	SER	-	EXPRESSION TAG	UNP Q460N5
A	1529	MET	-	EXPRESSION TAG	UNP Q460N5
B	1528	SER	-	EXPRESSION TAG	UNP Q460N5
B	1529	MET	-	EXPRESSION TAG	UNP Q460N5
C	1528	SER	-	EXPRESSION TAG	UNP Q460N5
C	1529	MET	-	EXPRESSION TAG	UNP Q460N5
D	1528	SER	-	EXPRESSION TAG	UNP Q460N5
D	1529	MET	-	EXPRESSION TAG	UNP Q460N5

- Molecule 2 is (2Z)-4-[(3-CARBAMOYLPHENYL)AMINO]-4-OXOBUT-2-ENOIC ACID (three-letter code: 0RY) (formula: C₁₁H₁₀N₂O₄).



Mol	Chain	Residues	Atoms				ZeroOcc	AltConf
2	A	1	Total	C	N	O	0	0
			17	11	2	4		
2	B	1	Total	C	N	O	0	0
			17	11	2	4		
2	C	1	Total	C	N	O	0	0
			17	11	2	4		
2	D	1	Total	C	N	O	0	0
			17	11	2	4		

- Molecule 3 is NITRATE ION (three-letter code: NO3) (formula: NO₃).



Mol	Chain	Residues	Atoms			ZeroOcc	AltConf
3	A	1	Total	N	O	0	0
			4	1	3		
3	C	1	Total	N	O	0	0
			4	1	3		

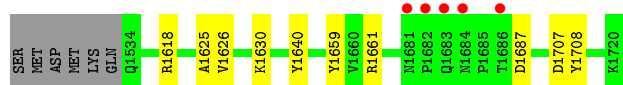
- Molecule 4 is water.

Mol	Chain	Residues	Atoms		ZeroOcc	AltConf
4	A	56	Total	O	0	0
			56	56		
4	B	71	Total	O	0	0
			71	71		
4	C	58	Total	O	0	0
			58	58		
4	D	60	Total	O	0	0
			60	60		

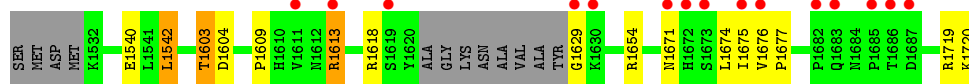
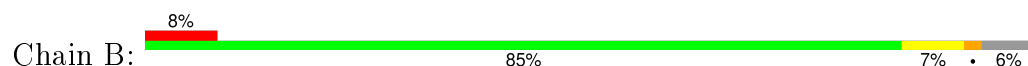
3 Residue-property plots [i](#)

These plots are drawn for all protein, RNA and DNA chains in the entry. The first graphic for a chain summarises the proportions of errors displayed in the second graphic. The second graphic shows the sequence view annotated by issues in geometry and electron density. Residues are color-coded according to the number of geometric quality criteria for which they contain at least one outlier: green = 0, yellow = 1, orange = 2 and red = 3 or more. A red dot above a residue indicates a poor fit to the electron density ($\text{RSRZ} > 2$). Stretches of 2 or more consecutive residues without any outlier are shown as a green connector. Residues present in the sample, but not in the model, are shown in grey.

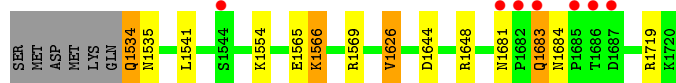
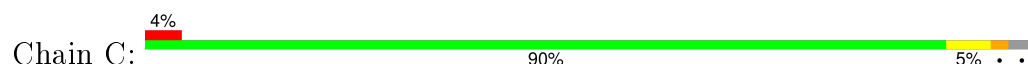
- Molecule 1: Poly [ADP-ribose] polymerase 14



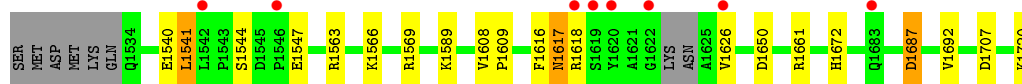
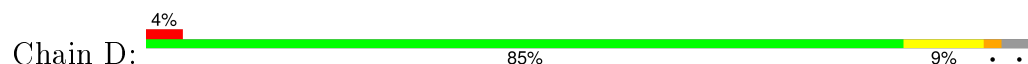
- Molecule 1: Poly [ADP-ribose] polymerase 14



- Molecule 1: Poly [ADP-ribose] polymerase 14



- Molecule 1: Poly [ADP-ribose] polymerase 14



4 Data and refinement statistics

Property	Value	Source
Space group	P 1	Depositor
Cell constants a, b, c, α , β , γ	39.65Å 81.89Å 83.19Å 60.12° 78.32° 80.31°	Depositor
Resolution (Å)	34.89 – 1.90 34.89 – 1.90	Depositor EDS
% Data completeness (in resolution range)	100.0 (34.89-1.90) 80.5 (34.89-1.90)	Depositor EDS
R_{merge}	0.07	Depositor
R_{sym}	(Not available)	Depositor
$\langle I/\sigma(I) \rangle$ ¹	4.57 (at 1.89Å)	Xtriage
Refinement program	REFMAC 5.5.0102	Depositor
R, R_{free}	0.197 , 0.239 0.201 , 0.242	Depositor DCC
R_{free} test set	3386 reflections (5.26%)	DCC
Wilson B-factor (Å ²)	22.5	Xtriage
Anisotropy	0.641	Xtriage
Bulk solvent k_{sol} (e/Å ³), B_{sol} (Å ²)	0.35 , 40.2	EDS
Estimated twinning fraction	0.016 for -h,-l,-k	Xtriage
L-test for twinning ²	$\langle L \rangle = 0.49$, $\langle L^2 \rangle = 0.32$	Xtriage
Outliers	0 of 67716 reflections	Xtriage
F_o, F_c correlation	0.94	EDS
Total number of atoms	6320	wwPDB-VP
Average B, all atoms (Å ²)	24.0	wwPDB-VP

Xtriage's analysis on translational NCS is as follows: *The largest off-origin peak in the Patterson function is 7.28% of the height of the origin peak. No significant pseudotranslation is detected.*

¹Intensities estimated from amplitudes.

²Theoretical values of $\langle |L| \rangle$, $\langle L^2 \rangle$ for acentric reflections are 0.5, 0.375 respectively for untwinned datasets, and 0.333, 0.2 for perfectly twinned datasets.

5 Model quality

5.1 Standard geometry

Bond lengths and bond angles in the following residue types are not validated in this section: 0RY, NO3

The Z score for a bond length (or angle) is the number of standard deviations the observed value is removed from the expected value. A bond length (or angle) with $|Z| > 5$ is considered an outlier worth inspection. RMSZ is the root-mean-square of all Z scores of the bond lengths (or angles).

Mol	Chain	Bond lengths		Bond angles	
		RMSZ	$\# Z > 5$	RMSZ	$\# Z > 5$
1	A	0.85	0/1560	0.83	3/2123 (0.1%)
1	B	0.90	0/1523	0.79	0/2068
1	C	0.84	0/1556	0.80	0/2117
1	D	0.88	1/1538 (0.1%)	0.82	4/2092 (0.2%)
All	All	0.87	1/6177 (0.0%)	0.81	7/8400 (0.1%)

Chiral center outliers are detected by calculating the chiral volume of a chiral center and verifying if the center is modelled as a planar moiety or with the opposite hand. A planarity outlier is detected by checking planarity of atoms in a peptide group, atoms in a mainchain group or atoms of a sidechain that are expected to be planar.

Mol	Chain	#Chirality outliers	#Planarity outliers
1	A	0	1

All (1) bond length outliers are listed below:

Mol	Chain	Res	Type	Atoms	Z	Observed(Å)	Ideal(Å)
1	D	1692	VAL	CB-CG1	5.12	1.63	1.52

All (7) bond angle outliers are listed below:

Mol	Chain	Res	Type	Atoms	Z	Observed(°)	Ideal(°)
1	D	1687	ASP	CB-CG-OD1	5.84	123.56	118.30
1	A	1661	ARG	NE-CZ-NH1	5.70	123.15	120.30
1	D	1707	ASP	CB-CG-OD2	5.43	123.18	118.30
1	A	1687	ASP	CB-CG-OD1	5.29	123.06	118.30
1	D	1661	ARG	NE-CZ-NH2	-5.25	117.67	120.30
1	D	1650	ASP	CB-CG-OD1	5.11	122.90	118.30
1	A	1661	ARG	NE-CZ-NH2	-5.01	117.80	120.30

There are no chirality outliers.

All (1) planarity outliers are listed below:

Mol	Chain	Res	Type	Group
1	A	1659	TYR	Peptide

5.2 Too-close contacts ⓘ

In the following table, the Non-H and H(model) columns list the number of non-hydrogen atoms and hydrogen atoms in the chain respectively. The H(added) column lists the number of hydrogen atoms added and optimized by MolProbity. The Clashes column lists the number of clashes within the asymmetric unit, whereas Symm-Clashes lists symmetry related clashes.

Mol	Chain	Non-H	H(model)	H(added)	Clashes	Symm-Clashes
1	A	1513	0	1429	4	0
1	B	1479	0	1406	17	0
1	C	1512	0	1431	14	0
1	D	1495	0	1411	9	0
2	A	17	0	9	0	0
2	B	17	0	9	1	0
2	C	17	0	9	1	0
2	D	17	0	9	1	0
3	A	4	0	0	0	0
3	C	4	0	0	0	0
4	A	56	0	0	0	0
4	B	71	0	0	1	0
4	C	58	0	0	1	0
4	D	60	0	0	2	0
All	All	6320	0	5713	41	0

The all-atom clashscore is defined as the number of clashes found per 1000 atoms (including hydrogen atoms). The all-atom clashscore for this structure is 3.

All (41) close contacts within the same asymmetric unit are listed below, sorted by their clash magnitude.

Atom-1	Atom-2	Interatomic distance (Å)	Clash overlap (Å)
1:C:1534:GLN:HG2	1:C:1535:ASN:H	1.37	0.88
1:B:1609:PRO:O	1:B:1613[A]:ARG:HG2	1.79	0.81
1:B:1542:LEU:HD12	1:B:1542:LEU:N	2.00	0.77
1:B:1719:ARG:NH2	4:B:1924:HOH:O	2.16	0.73
1:C:1534:GLN:CG	1:C:1535:ASN:H	2.04	0.70
1:D:1541:LEU:HD23	1:D:1541:LEU:N	2.07	0.69

Continued on next page...

Continued from previous page...

Atom-1	Atom-2	Interatomic distance (Å)	Clash overlap (Å)
2:B:1801:ORY:OAE	2:B:1801:ORY:NAL	2.24	0.66
1:A:1625:ALA:HB2	1:A:1630:LYS:CD	2.31	0.61
1:B:1675:ILE:HD12	1:B:1676:VAL:HG13	1.82	0.61
1:D:1540:GLU:HG2	1:D:1541:LEU:O	2.01	0.60
1:B:1542:LEU:H	1:B:1542:LEU:HD12	1.66	0.59
1:B:1542:LEU:CD1	1:B:1542:LEU:N	2.68	0.56
1:A:1625:ALA:HB2	1:A:1630:LYS:HD3	1.87	0.56
1:D:1547:GLU:OE2	1:D:1569:ARG:NH1	2.39	0.56
1:B:1540:GLU:H	1:C:1535:ASN:HD21	1.56	0.53
1:D:1616:PHE:O	1:D:1617:ASN:O	2.26	0.53
1:C:1534:GLN:CG	1:C:1535:ASN:N	2.72	0.52
1:C:1534:GLN:HG2	1:C:1535:ASN:N	2.17	0.51
1:B:1613[A]:ARG:CZ	1:C:1566:LYS:NZ	2.74	0.51
1:D:1626:VAL:HG21	2:D:1801:ORY:H3	1.93	0.51
1:D:1589:LYS:HE3	1:D:1687:ASP:OD1	2.10	0.51
1:D:1720:LYS:NZ	4:D:1932:HOH:O	2.44	0.51
1:B:1542:LEU:H	1:B:1542:LEU:CD1	2.24	0.50
1:D:1672:HIS:ND1	4:D:1945:HOH:O	2.35	0.50
1:A:1625:ALA:HB2	1:A:1630:LYS:HD2	1.93	0.50
1:B:1540:GLU:H	1:C:1535:ASN:ND2	2.10	0.50
1:C:1644:ASP:O	1:C:1648:ARG:HG3	2.13	0.49
1:B:1676:VAL:HB	1:B:1677:PRO:CD	2.44	0.48
1:C:1683:GLN:OE1	1:C:1684:ASN:HB2	2.14	0.47
1:B:1674:LEU:HD22	1:B:1676:VAL:O	2.14	0.46
1:B:1613[A]:ARG:NH1	1:C:1566:LYS:HZ1	2.14	0.46
1:B:1609:PRO:O	1:B:1613[A]:ARG:CG	2.58	0.46
1:B:1603:THR:HG23	1:B:1604:ASP:O	2.16	0.45
1:C:1626:VAL:HG21	2:C:1801:ORY:CAF	2.47	0.45
1:A:1707[A]:ASP:OD2	1:A:1708:TYR:N	2.49	0.44
1:C:1554:LYS:HE3	4:C:1928:HOH:O	2.18	0.43
1:B:1629:GLY:O	1:B:1675:ILE:O	2.36	0.43
1:C:1541:LEU:HD21	1:C:1569:ARG:NH1	2.34	0.42
1:C:1565:GLU:OE2	1:C:1719:ARG:NE	2.43	0.42
1:B:1675:ILE:HD12	1:B:1675:ILE:C	2.42	0.40
1:D:1608:VAL:HB	1:D:1609:PRO:HD3	2.03	0.40

There are no symmetry-related clashes.

5.3 Torsion angles

5.3.1 Protein backbone

In the following table, the Percentiles column shows the percent Ramachandran outliers of the chain as a percentile score with respect to all X-ray entries followed by that with respect to entries of similar resolution.

The Analysed column shows the number of residues for which the backbone conformation was analysed, and the total number of residues.

Mol	Chain	Analysed	Favoured	Allowed	Outliers	Percentiles	
1	A	186/193 (96%)	183 (98%)	2 (1%)	1 (0%)	34	21
1	B	178/193 (92%)	177 (99%)	1 (1%)	0	100	100
1	C	185/193 (96%)	180 (97%)	4 (2%)	1 (0%)	34	21
1	D	181/193 (94%)	175 (97%)	5 (3%)	1 (1%)	30	17
All	All	730/772 (95%)	715 (98%)	12 (2%)	3 (0%)	39	27

All (3) Ramachandran outliers are listed below:

Mol	Chain	Res	Type
1	D	1617	ASN
1	A	1626	VAL
1	C	1626	VAL

5.3.2 Protein sidechains

In the following table, the Percentiles column shows the percent sidechain outliers of the chain as a percentile score with respect to all X-ray entries followed by that with respect to entries of similar resolution.

The Analysed column shows the number of residues for which the sidechain conformation was analysed, and the total number of residues.

Mol	Chain	Analysed	Rotameric	Outliers	Percentiles	
1	A	164/170 (96%)	162 (99%)	2 (1%)	78	76
1	B	162/170 (95%)	154 (95%)	8 (5%)	31	18
1	C	164/170 (96%)	160 (98%)	4 (2%)	57	49
1	D	162/170 (95%)	157 (97%)	5 (3%)	47	37
All	All	652/680 (96%)	633 (97%)	19 (3%)	51	40

All (19) residues with a non-rotameric sidechain are listed below:

Mol	Chain	Res	Type
1	A	1618	ARG
1	A	1640	TYR
1	B	1542	LEU
1	B	1603	THR
1	B	1613[A]	ARG
1	B	1613[B]	ARG
1	B	1618	ARG
1	B	1654	ARG
1	B	1671	ASN
1	B	1720	LYS
1	C	1534	GLN
1	C	1566	LYS
1	C	1681	ASN
1	C	1683	GLN
1	D	1541	LEU
1	D	1544	SER
1	D	1563	ARG
1	D	1566	LYS
1	D	1618	ARG

Some sidechains can be flipped to improve hydrogen bonding and reduce clashes. All (3) such sidechains are listed below:

Mol	Chain	Res	Type
1	A	1561	HIS
1	B	1614	ASN
1	C	1535	ASN

5.3.3 RNA ⓘ

There are no RNA molecules in this entry.

5.4 Non-standard residues in protein, DNA, RNA chains ⓘ

There are no non-standard protein/DNA/RNA residues in this entry.

5.5 Carbohydrates ⓘ

There are no carbohydrates in this entry.

5.6 Ligand geometry

6 ligands are modelled in this entry.

In the following table, the Counts columns list the number of bonds (or angles) for which Mogul statistics could be retrieved, the number of bonds (or angles) that are observed in the model and the number of bonds (or angles) that are defined in the chemical component dictionary. The Link column lists molecule types, if any, to which the group is linked. The Z score for a bond length (or angle) is the number of standard deviations the observed value is removed from the expected value. A bond length (or angle) with $|Z| > 2$ is considered an outlier worth inspection. RMSZ is the root-mean-square of all Z scores of the bond lengths (or angles).

Mol	Type	Chain	Res	Link	Bond lengths			Bond angles		
					Counts	RMSZ	# $ Z > 2$	Counts	RMSZ	# $ Z > 2$
2	ORY	A	1801	-	14,17,17	2.04	4 (28%)	18,22,22	2.03	5 (27%)
3	NO3	A	1802	-	3,3,3	3.06	3 (100%)	3,3,3	0.41	0
2	ORY	B	1801	-	14,17,17	1.92	3 (21%)	18,22,22	1.79	5 (27%)
2	ORY	C	1801	-	14,17,17	1.47	3 (21%)	18,22,22	2.49	9 (50%)
3	NO3	C	1802	-	3,3,3	2.77	3 (100%)	3,3,3	0.35	0
2	ORY	D	1801	-	14,17,17	2.04	5 (35%)	18,22,22	2.15	5 (27%)

In the following table, the Chirals column lists the number of chiral outliers, the number of chiral centers analysed, the number of these observed in the model and the number defined in the chemical component dictionary. Similar counts are reported in the Torsion and Rings columns. '-' means no outliers of that kind were identified.

Mol	Type	Chain	Res	Link	Chirals	Torsions	Rings
2	ORY	A	1801	-	-	0/11/13/13	0/1/1/1
3	NO3	A	1802	-	-	0/0/0/0	0/0/0/0
2	ORY	B	1801	-	-	0/11/13/13	0/1/1/1
2	ORY	C	1801	-	-	0/11/13/13	0/1/1/1
3	NO3	C	1802	-	-	0/0/0/0	0/0/0/0
2	ORY	D	1801	-	-	0/11/13/13	0/1/1/1

All (21) bond length outliers are listed below:

Mol	Chain	Res	Type	Atoms	Z	Observed(Å)	Ideal(Å)
2	B	1801	ORY	CAP-NAL	-4.48	1.33	1.41
2	A	1801	ORY	CAP-NAL	-3.88	1.34	1.41
2	D	1801	ORY	CAG-CAO	-3.86	1.40	1.48
2	B	1801	ORY	CAG-CAO	-3.73	1.40	1.48
2	D	1801	ORY	CAP-NAL	-3.67	1.34	1.41
2	C	1801	ORY	CAG-CAO	-2.98	1.42	1.48
2	A	1801	ORY	CAG-CAO	-2.97	1.42	1.48

Continued on next page...

Continued from previous page...

Mol	Chain	Res	Type	Atoms	Z	Observed(Å)	Ideal(Å)
2	D	1801	0RY	CAK-CAP	-2.55	1.35	1.39
2	C	1801	0RY	CAO-NAL	-2.37	1.31	1.35
2	D	1801	0RY	CAO-NAL	-2.20	1.32	1.35
3	C	1802	NO3	O3-N	2.62	1.38	1.25
3	C	1802	NO3	O2-N	2.64	1.38	1.25
3	A	1802	NO3	O2-N	2.76	1.39	1.25
2	C	1801	0RY	CAG-CAF	2.85	1.40	1.32
3	C	1802	NO3	O1-N	3.05	1.36	1.24
3	A	1802	NO3	O3-N	3.06	1.41	1.25
2	B	1801	0RY	CAG-CAF	3.08	1.41	1.32
2	A	1801	0RY	CAG-CAF	3.14	1.41	1.32
3	A	1802	NO3	O1-N	3.33	1.38	1.24
2	D	1801	0RY	CAG-CAF	3.58	1.42	1.32
2	A	1801	0RY	CAQ-CAN	4.51	1.57	1.50

All (24) bond angle outliers are listed below:

Mol	Chain	Res	Type	Atoms	Z	Observed(°)	Ideal(°)
2	A	1801	0RY	OAD-CAO-CAG	-3.99	115.33	123.01
2	B	1801	0RY	OAD-CAO-CAG	-3.55	116.17	123.01
2	C	1801	0RY	OAD-CAO-CAG	-3.53	116.21	123.01
2	C	1801	0RY	CAI-CAP-CAK	-2.94	116.17	119.69
2	C	1801	0RY	CAP-NAL-CAO	-2.70	124.41	128.37
2	A	1801	0RY	CAI-CAP-NAL	-2.38	112.46	120.41
2	C	1801	0RY	CAJ-CAQ-CAN	-2.38	114.81	121.09
2	B	1801	0RY	CAQ-CAN-NAA	-2.31	115.29	117.82
2	D	1801	0RY	OAD-CAO-CAG	-2.27	118.64	123.01
2	C	1801	0RY	CAI-CAP-NAL	-2.18	113.14	120.41
2	C	1801	0RY	CAH-CAI-CAP	2.13	122.42	119.72
2	D	1801	0RY	CAH-CAI-CAP	2.17	122.47	119.72
2	B	1801	0RY	OAD-CAO-NAL	2.52	126.14	122.95
2	D	1801	0RY	CAJ-CAQ-CAK	2.66	122.46	119.24
2	A	1801	0RY	CAK-CAP-NAL	2.66	128.70	120.13
2	B	1801	0RY	CAP-NAL-CAO	3.18	133.02	128.37
2	C	1801	0RY	CAK-CAP-NAL	3.27	130.66	120.13
2	B	1801	0RY	CAF-CAG-CAO	3.38	129.00	121.63
2	D	1801	0RY	CAG-CAO-NAL	3.83	120.58	114.13
2	A	1801	0RY	CAG-CAO-NAL	4.00	120.86	114.13
2	C	1801	0RY	CAF-CAG-CAO	4.29	130.97	121.63
2	A	1801	0RY	CAF-CAG-CAO	4.61	131.68	121.63
2	D	1801	0RY	CAF-CAG-CAO	4.83	132.17	121.63
2	C	1801	0RY	CAG-CAO-NAL	4.86	122.31	114.13

There are no chirality outliers.

There are no torsion outliers.

There are no ring outliers.

3 monomers are involved in 3 short contacts:

Mol	Chain	Res	Type	Clashes	Symm-Clashes
2	B	1801	0RY	1	0
2	C	1801	0RY	1	0
2	D	1801	0RY	1	0

5.7 Other polymers [i](#)

There are no such residues in this entry.

5.8 Polymer linkage issues [i](#)

There are no chain breaks in this entry.

6 Fit of model and data ⓘ

6.1 Protein, DNA and RNA chains ⓘ

In the following table, the column labelled ‘#RSRZ> 2’ contains the number (and percentage) of RSRZ outliers, followed by percent RSRZ outliers for the chain as percentile scores relative to all X-ray entries and entries of similar resolution. The OWAB column contains the minimum, median, 95th percentile and maximum values of the occupancy-weighted average B-factor per residue. The column labelled ‘Q< 0.9’ lists the number of (and percentage) of residues with an average occupancy less than 0.9.

Mol	Chain	Analysed	<RSRZ>	#RSRZ>2	OWAB(Å ²)	Q<0.9
1	A	187/193 (96%)	0.14	5 (2%) 58 61	12, 23, 38, 54	0
1	B	181/193 (93%)	0.28	15 (8%) 14 15	13, 23, 40, 57	0
1	C	187/193 (96%)	0.04	7 (3%) 45 49	14, 24, 39, 55	0
1	D	185/193 (95%)	0.13	8 (4%) 39 42	12, 23, 42, 54	0
All	All	740/772 (95%)	0.14	35 (4%) 35 38	12, 23, 42, 57	0

All (35) RSRZ outliers are listed below:

Mol	Chain	Res	Type	RSRZ
1	B	1629	GLY	5.8
1	A	1683	GLN	5.6
1	B	1685	PRO	5.3
1	B	1673	SER	5.1
1	C	1686	THR	5.0
1	B	1682	PRO	4.4
1	A	1682	PRO	4.3
1	D	1546	PRO	4.1
1	B	1686	THR	4.1
1	A	1681	ASN	4.0
1	C	1685	PRO	4.0
1	D	1619	SER	3.7
1	D	1622	GLY	3.7
1	A	1684	ASN	3.7
1	B	1630	LYS	3.7
1	B	1683	GLN	3.6
1	C	1681	ASN	3.5
1	B	1671	ASN	3.4
1	B	1675	ILE	3.3
1	C	1683	GLN	3.2
1	D	1683	GLN	3.2

Continued on next page...

Continued from previous page...

Mol	Chain	Res	Type	RSRZ
1	B	1672	HIS	3.1
1	C	1682	PRO	2.9
1	B	1619	SER	2.9
1	B	1613[A]	ARG	2.7
1	D	1626	VAL	2.6
1	C	1544	SER	2.5
1	B	1676	VAL	2.5
1	D	1620	TYR	2.4
1	A	1686	THR	2.4
1	B	1687	ASP	2.3
1	D	1618	ARG	2.2
1	C	1687	ASP	2.2
1	B	1611	VAL	2.1
1	D	1542	LEU	2.1

6.2 Non-standard residues in protein, DNA, RNA chains [i](#)

There are no non-standard protein/DNA/RNA residues in this entry.

6.3 Carbohydrates [i](#)

There are no carbohydrates in this entry.

6.4 Ligands [i](#)

In the following table, the Atoms column lists the number of modelled atoms in the group and the number defined in the chemical component dictionary. LLDF column lists the quality of electron density of the group with respect to its neighbouring residues in protein, DNA or RNA chains. The B-factors column lists the minimum, median, 95th percentile and maximum values of B factors of atoms in the group. The column labelled 'Q< 0.9' lists the number of atoms with occupancy less than 0.9.

Mol	Type	Chain	Res	Atoms	RSCC	RSR	LLDF	B-factors(Å ²)	Q<0.9
2	0RY	B	1801	17/17	0.90	0.14	0.97	17,28,48,49	0
2	0RY	D	1801	17/17	0.91	0.14	0.38	15,22,37,37	0
3	NO3	A	1802	4/4	0.97	0.10	0.34	27,27,27,30	0
3	NO3	C	1802	4/4	0.97	0.12	0.14	26,26,26,27	0
2	0RY	A	1801	17/17	0.94	0.12	-0.04	14,18,33,36	0
2	0RY	C	1801	17/17	0.92	0.11	-0.25	14,20,35,36	0

6.5 Other polymers [i](#)

There are no such residues in this entry.