



# Full wwPDB X-ray Structure Validation Report ⓘ

Jan 31, 2016 – 07:21 PM GMT

PDB ID : 1F73  
Title : CRYSTAL STRUCTURE ANALYSIS OF N-ACETYLNEURAMINATE  
LYASE FROM HAEMOPHILUS INFLUENZAE: CRYSTAL FORM III IN  
COMPLEX WITH SIALIC ACID ALDITOL  
Authors : Barbosa, J.A.R.G.; Smith, B.J.; DeGori, R.; Lawrence, M.C.  
Deposited on : 2000-06-25  
Resolution : 1.95 Å(reported)

This is a Full wwPDB X-ray Structure Validation Report for a publicly released PDB entry.  
We welcome your comments at [validation@mail.wwpdb.org](mailto:validation@mail.wwpdb.org)  
A user guide is available at  
<http://wwpdb.org/validation/2016/XrayValidationReportHelp>  
with specific help available everywhere you see the ⓘ symbol.

---

The following versions of software and data (see [references ⓘ](#)) were used in the production of this report:

MolProbity : 4.02b-467  
Mogul : 1.7 (RC4), CSD as536be (2015)  
Xtriage (Phenix) : 1.9-1692  
EDS : rb-20026688  
Percentile statistics : 20151230.v01 (using entries in the PDB archive December 30th 2015)  
Refmac : 5.8.0135  
CCP4 : 6.5.0  
Ideal geometry (proteins) : Engh & Huber (2001)  
Ideal geometry (DNA, RNA) : Parkinson et al. (1996)  
Validation Pipeline (wwPDB-VP) : trunk26865

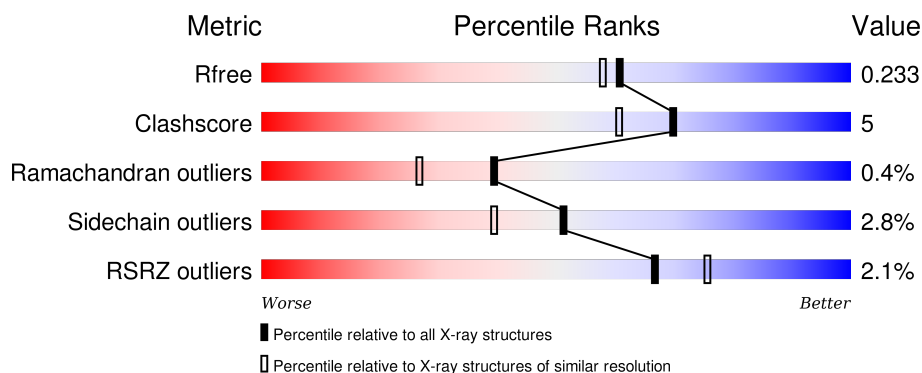
# 1 Overall quality at a glance

The following experimental techniques were used to determine the structure:

## *X-RAY DIFFRACTION*

The reported resolution of this entry is 1.95 Å.

Percentile scores (ranging between 0-100) for global validation metrics of the entry are shown in the following graphic. The table shows the number of entries on which the scores are based.



Metric	Whole archive (#Entries)	Similar resolution (#Entries, resolution range(Å))
$R_{free}$	91344	1833 (1.96-1.96)
Clashscore	102246	1953 (1.96-1.96)
Ramachandran outliers	100387	1936 (1.96-1.96)
Sidechain outliers	100360	1936 (1.96-1.96)
RSRZ outliers	91569	1835 (1.96-1.96)

The table below summarises the geometric issues observed across the polymeric chains and their fit to the electron density. The red, orange, yellow and green segments on the lower bar indicate the fraction of residues that contain outliers for  $\geq 3$ , 2, 1 and 0 types of geometric quality criteria. A grey segment represents the fraction of residues that are not modelled. The numeric value for each fraction is indicated below the corresponding segment, with a dot representing fractions  $\leq 5\%$ . The upper red bar (where present) indicates the fraction of residues that have poor fit to the electron density. The numeric value is given above the bar.

Mol	Chain	Length	Quality of chain
1	A	293	<div> <div>2%</div> <div>81%16%..</div> </div>
1	B	293	<div> <div>2%</div> <div>82%14%..</div> </div>
1	C	293	<div> <div>2%</div> <div>81%15%..</div> </div>
1	D	293	<div> <div>2%</div> <div>80%15%..</div> </div>

The following table lists non-polymeric compounds, carbohydrate monomers and non-standard

residues in protein, DNA, RNA chains that are outliers for geometric or electron-density-fit criteria:

Mol	Type	Chain	Res	Chirality	Geometry	Clashes	Electron density
3	GOL	B	704	-	-	-	X

## 2 Entry composition

There are 4 unique types of molecules in this entry. The entry contains 9738 atoms, of which 0 are hydrogens and 0 are deuteriums.

In the tables below, the ZeroOcc column contains the number of atoms modelled with zero occupancy, the AltConf column contains the number of residues with at least one atom in alternate conformation and the Trace column contains the number of residues modelled with at most 2 atoms.

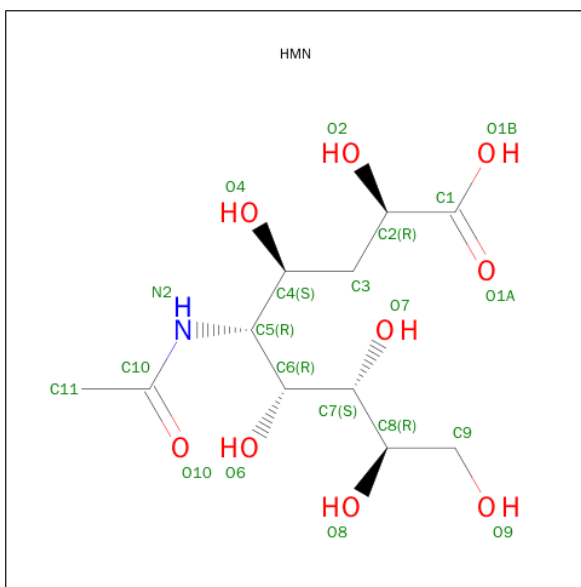
- Molecule 1 is a protein called N-ACETYL NEURAMINATE LYASE.

Mol	Chain	Residues	Atoms					ZeroOcc	AltConf	Trace
1	A	288	Total	C	N	O	S	0	1	0
			2258	1453	369	426	10			
1	B	288	Total	C	N	O	S	0	0	0
			2253	1450	368	425	10			
1	C	288	Total	C	N	O	S	0	1	0
			2257	1453	369	425	10			
1	D	288	Total	C	N	O	S	0	2	0
			2261	1455	369	427	10			

There are 16 discrepancies between the modelled and reference sequences:

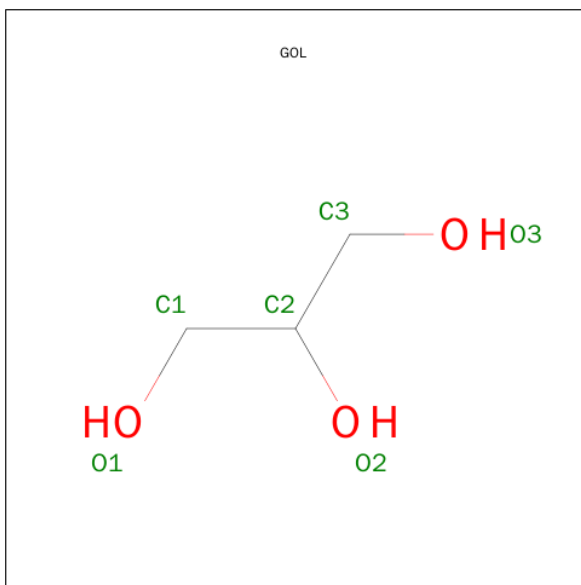
Chain	Residue	Modelled	Actual	Comment	Reference
A	131	SER	ASN	SEE REMARK 999	UNP P44539
A	229	LYS	ALA	SEE REMARK 999	UNP P44539
A	278	ALA	GLU	SEE REMARK 999	UNP P44539
A	281	VAL	LEU	SEE REMARK 999	UNP P44539
B	131	SER	ASN	SEE REMARK 999	UNP P44539
B	229	LYS	ALA	SEE REMARK 999	UNP P44539
B	278	ALA	GLU	SEE REMARK 999	UNP P44539
B	281	VAL	LEU	SEE REMARK 999	UNP P44539
C	131	SER	ASN	SEE REMARK 999	UNP P44539
C	229	LYS	ALA	SEE REMARK 999	UNP P44539
C	278	ALA	GLU	SEE REMARK 999	UNP P44539
C	281	VAL	LEU	SEE REMARK 999	UNP P44539
D	131	SER	ASN	SEE REMARK 999	UNP P44539
D	229	LYS	ALA	SEE REMARK 999	UNP P44539
D	278	ALA	GLU	SEE REMARK 999	UNP P44539
D	281	VAL	LEU	SEE REMARK 999	UNP P44539

- Molecule 2 is 2,4,6,7,8,9-HEXAHYDROXY-5-METHYLCARBOXAMIDO NONANOIC ACID (three-letter code: HMN) (formula: C<sub>11</sub>H<sub>21</sub>NO<sub>9</sub>).



Mol	Chain	Residues	Atoms				ZeroOcc	AltConf
2	A	1	Total	C	N	O	0	0
			21	11	1	9		
2	B	1	Total	C	N	O	0	0
			21	11	1	9		
2	C	1	Total	C	N	O	0	0
			21	11	1	9		
2	D	1	Total	C	N	O	0	0
			21	11	1	9		

- Molecule 3 is GLYCEROL (three-letter code: GOL) (formula:  $C_3H_8O_3$ ).



Mol	Chain	Residues	Atoms			ZeroOcc	AltConf
3	B	1	Total	C	O	0	0
			6	3	3		

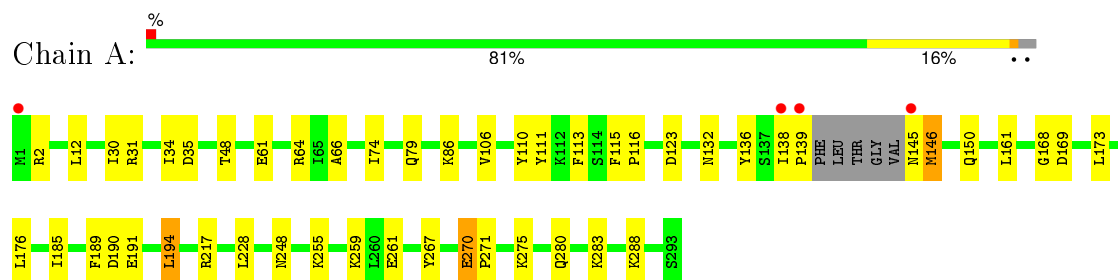
- Molecule 4 is water.

Mol	Chain	Residues	Atoms		ZeroOcc	AltConf
4	A	112	Total	O	0	0
			112	112		
4	B	171	Total	O	0	0
			171	171		
4	C	164	Total	O	0	0
			164	164		
4	D	172	Total	O	0	0
			172	172		

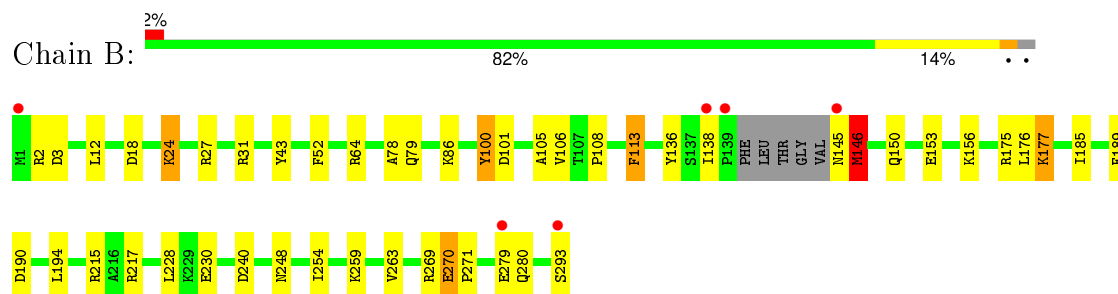
### 3 Residue-property plots [i](#)

These plots are drawn for all protein, RNA and DNA chains in the entry. The first graphic for a chain summarises the proportions of errors displayed in the second graphic. The second graphic shows the sequence view annotated by issues in geometry and electron density. Residues are color-coded according to the number of geometric quality criteria for which they contain at least one outlier: green = 0, yellow = 1, orange = 2 and red = 3 or more. A red dot above a residue indicates a poor fit to the electron density ( $RSRZ > 2$ ). Stretches of 2 or more consecutive residues without any outlier are shown as a green connector. Residues present in the sample, but not in the model, are shown in grey.

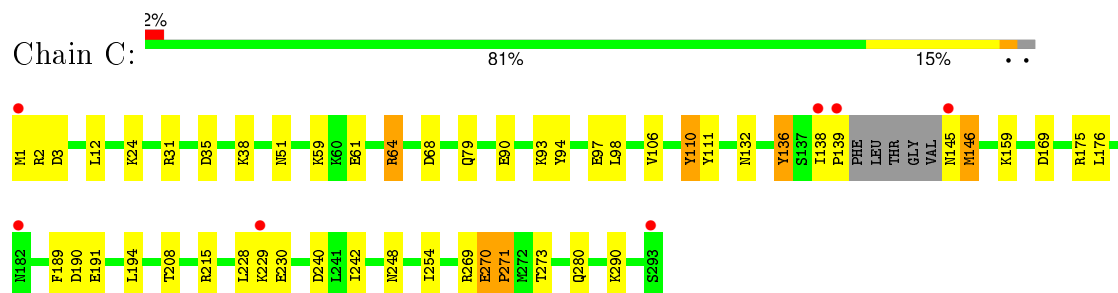
#### • Molecule 1: N-ACETYL NEURAMINATE LYASE



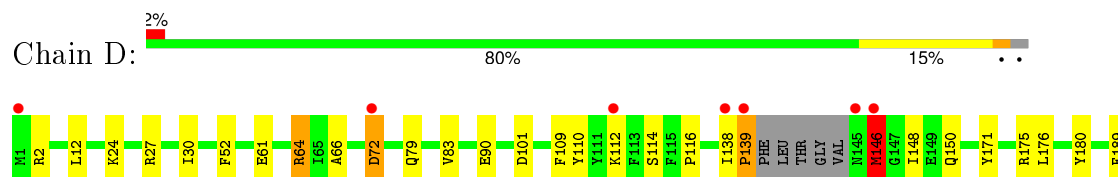
#### • Molecule 1: N-ACETYL NEURAMINATE LYASE



#### • Molecule 1: N-ACETYL NEURAMINATE LYASE



#### • Molecule 1: N-ACETYL NEURAMINATE LYASE



D190	T208	R215	A216	R217	L228	D240	L241	L242	M248	L254	E261	Y267	C268	R269	E270	P271	K275	A276	T277	A278	E279	Q280	Y281	A282	K283	D286	L287	K288	A289	K290	F291	L292	S293
------	------	------	------	------	------	------	------	------	------	------	------	------	------	------	------	------	------	------	------	------	------	------	------	------	------	------	------	------	------	------	------	------	------



## 4 Data and refinement statistics

Property	Value	Source
Space group	P 21 21 21	Depositor
Cell constants a, b, c, $\alpha$ , $\beta$ , $\gamma$	81.55Å 116.73Å 129.51Å 90.00° 90.00° 90.00°	Depositor
Resolution (Å)	20.00 – 1.95 19.91 – 1.95	Depositor EDS
% Data completeness (in resolution range)	97.1 (20.00-1.95) 95.7 (19.91-1.95)	Depositor EDS
$R_{merge}$	0.08	Depositor
$R_{sym}$	(Not available)	Depositor
$\langle I/\sigma(I) \rangle$ <sup>1</sup>	2.79 (at 1.94Å)	Xtriage
Refinement program	REFMAC	Depositor
R, $R_{free}$	0.201 , 0.256 0.187 , 0.233	Depositor DCC
$R_{free}$ test set	8772 reflections (11.25%)	DCC
Wilson B-factor (Å <sup>2</sup> )	21.2	Xtriage
Anisotropy	0.170	Xtriage
Bulk solvent $k_{sol}$ (e/Å <sup>3</sup> ), $B_{sol}$ (Å <sup>2</sup> )	0.38 , 54.2	EDS
Estimated twinning fraction	No twinning to report.	Xtriage
L-test for twinning <sup>2</sup>	$\langle  L  \rangle = 0.50$ , $\langle L^2 \rangle = 0.33$	Xtriage
Outliers	1 of 87925 reflections (0.001%)	Xtriage
$F_o, F_c$ correlation	0.95	EDS
Total number of atoms	9738	wwPDB-VP
Average B, all atoms (Å <sup>2</sup> )	24.0	wwPDB-VP

Xtriage's analysis on translational NCS is as follows: *The analyses of the Patterson function reveals a significant off-origin peak that is 22.10 % of the origin peak, indicating pseudo translational symmetry. The chance of finding a peak of this or larger height randomly in a structure without pseudo translational symmetry is equal to 6.1037e-03. The detected translational NCS is most likely also responsible for the elevated intensity ratio.*

<sup>1</sup>Intensities estimated from amplitudes.

<sup>2</sup>Theoretical values of  $\langle |L| \rangle$ ,  $\langle L^2 \rangle$  for acentric reflections are 0.5, 0.375 respectively for untwinned datasets, and 0.333, 0.2 for perfectly twinned datasets.

## 5 Model quality

### 5.1 Standard geometry

Bond lengths and bond angles in the following residue types are not validated in this section: GOL, HMN

The Z score for a bond length (or angle) is the number of standard deviations the observed value is removed from the expected value. A bond length (or angle) with  $|Z| > 5$  is considered an outlier worth inspection. RMSZ is the root-mean-square of all Z scores of the bond lengths (or angles).

Mol	Chain	Bond lengths		Bond angles	
		RMSZ	$\# Z  > 5$	RMSZ	$\# Z  > 5$
1	A	0.59	0/2300	1.31	13/3092 (0.4%)
1	B	0.63	0/2291	1.39	23/3080 (0.7%)
1	C	0.63	0/2300	1.40	28/3091 (0.9%)
1	D	0.61	0/2309	1.39	25/3103 (0.8%)
All	All	0.62	0/9200	1.37	89/12366 (0.7%)

Chiral center outliers are detected by calculating the chiral volume of a chiral center and verifying if the center is modelled as a planar moiety or with the opposite hand. A planarity outlier is detected by checking planarity of atoms in a peptide group, atoms in a mainchain group or atoms of a sidechain that are expected to be planar.

Mol	Chain	#Chirality outliers	#Planarity outliers
1	A	0	2
1	B	0	2
1	C	0	2
1	D	0	2
All	All	0	8

There are no bond length outliers.

All (89) bond angle outliers are listed below:

Mol	Chain	Res	Type	Atoms	Z	Observed(°)	Ideal(°)
1	D	269	ARG	NE-CZ-NH2	-14.53	113.04	120.30
1	D	269	ARG	NE-CZ-NH1	12.82	126.71	120.30
1	C	110	TYR	CB-CG-CD2	11.43	127.86	121.00
1	B	269	ARG	NE-CZ-NH1	11.39	126.00	120.30
1	D	271	PRO	N-CA-CB	11.00	116.50	103.30
1	C	271	PRO	N-CA-CB	10.94	116.43	103.30
1	C	110	TYR	CB-CG-CD1	-10.45	114.73	121.00
1	D	271	PRO	CA-N-CD	-10.30	97.08	111.50

*Continued on next page...*

*Continued from previous page...*

Mol	Chain	Res	Type	Atoms	Z	Observed(°)	Ideal(°)
1	C	2	ARG	NE-CZ-NH2	-10.28	115.16	120.30
1	A	31	ARG	CD-NE-CZ	9.97	137.55	123.60
1	B	2	ARG	NE-CZ-NH2	-9.87	115.37	120.30
1	C	64	ARG	NE-CZ-NH1	9.68	125.14	120.30
1	B	64	ARG	NE-CZ-NH1	9.38	124.99	120.30
1	B	215	ARG	NE-CZ-NH1	9.25	124.93	120.30
1	B	271	PRO	N-CA-CB	9.24	114.39	103.30
1	C	270	GLU	CA-C-O	-9.08	101.03	120.10
1	B	215	ARG	NE-CZ-NH2	-8.87	115.87	120.30
1	C	271	PRO	CA-N-CD	-8.71	99.31	111.50
1	C	3	ASP	CB-CG-OD1	8.70	126.13	118.30
1	A	2	ARG	NE-CZ-NH2	-8.59	116.00	120.30
1	A	123	ASP	CB-CG-OD1	8.32	125.79	118.30
1	A	217	ARG	NE-CZ-NH1	8.23	124.42	120.30
1	D	175	ARG	NE-CZ-NH1	8.09	124.34	120.30
1	D	101	ASP	CB-CG-OD2	7.77	125.30	118.30
1	A	35	ASP	CB-CG-OD1	7.50	125.05	118.30
1	D	215	ARG	NE-CZ-NH2	7.45	124.02	120.30
1	D	27	ARG	NE-CZ-NH2	-7.44	116.58	120.30
1	B	270	GLU	CA-C-O	-7.42	104.52	120.10
1	D	217	ARG	NE-CZ-NH1	7.40	124.00	120.30
1	D	270	GLU	CA-C-O	-7.26	104.85	120.10
1	C	215	ARG	NE-CZ-NH2	-7.20	116.70	120.30
1	A	270	GLU	CA-C-O	-7.20	104.98	120.10
1	C	2	ARG	CD-NE-CZ	7.14	133.59	123.60
1	A	271	PRO	N-CA-CB	7.13	111.85	103.30
1	A	191	GLU	OE1-CD-OE2	-7.12	114.76	123.30
1	C	215	ARG	NE-CZ-NH1	6.98	123.79	120.30
1	D	279	GLU	OE1-CD-OE2	-6.82	115.12	123.30
1	B	113	PHE	CB-CG-CD1	-6.81	116.03	120.80
1	B	271	PRO	CA-N-CD	-6.81	101.97	111.50
1	C	190	ASP	CB-CG-OD1	6.76	124.39	118.30
1	B	190	ASP	CB-CG-OD1	6.74	124.36	118.30
1	B	3	ASP	CB-CG-OD1	6.69	124.32	118.30
1	D	171	TYR	CB-CG-CD2	-6.63	117.02	121.00
1	A	271	PRO	CA-N-CD	-6.61	102.25	111.50
1	C	240	ASP	CB-CG-OD1	6.55	124.20	118.30
1	D	215	ARG	CD-NE-CZ	6.50	132.70	123.60
1	A	169	ASP	CB-CG-OD1	6.48	124.13	118.30
1	B	101	ASP	CB-CG-OD2	6.38	124.05	118.30
1	D	72	ASP	CB-CG-OD2	-6.38	112.56	118.30
1	D	64	ARG	NE-CZ-NH1	6.31	123.46	120.30

*Continued on next page...*

*Continued from previous page...*

Mol	Chain	Res	Type	Atoms	Z	Observed(°)	Ideal(°)
1	D	215	ARG	NH1-CZ-NH2	-6.21	112.57	119.40
1	B	100	TYR	CB-CG-CD2	-6.19	117.29	121.00
1	B	18	ASP	CB-CG-OD1	6.19	123.87	118.30
1	D	215	ARG	NE-CZ-NH1	6.16	123.38	120.30
1	D	2	ARG	NE-CZ-NH2	-6.15	117.22	120.30
1	D	180	TYR	CB-CG-CD2	-5.95	117.43	121.00
1	C	68	ASP	CB-CG-OD2	5.93	123.64	118.30
1	B	240	ASP	CB-CG-OD1	5.92	123.63	118.30
1	D	240	ASP	CB-CG-OD2	-5.90	112.99	118.30
1	C	31	ARG	NE-CZ-NH2	-5.88	117.36	120.30
1	D	72	ASP	CB-CG-OD1	5.86	123.58	118.30
1	C	38[A]	LYS	CD-CE-NZ	5.76	124.95	111.70
1	C	38[B]	LYS	CD-CE-NZ	5.76	124.95	111.70
1	B	31	ARG	NE-CZ-NH2	5.70	123.15	120.30
1	C	111	TYR	CB-CG-CD1	-5.66	117.61	121.00
1	C	240	ASP	CB-CG-OD2	-5.63	113.24	118.30
1	B	146	MET	CA-CB-CG	5.62	122.86	113.30
1	C	290	LYS	CA-CB-CG	5.61	125.74	113.40
1	D	267	TYR	CB-CG-CD2	-5.51	117.69	121.00
1	C	271	PRO	N-CD-CG	5.46	111.39	103.20
1	B	24	LYS	CA-CB-CG	-5.39	101.55	113.40
1	C	190	ASP	CB-CG-OD2	-5.36	113.47	118.30
1	C	175	ARG	CD-NE-CZ	5.36	131.10	123.60
1	D	146	MET	CA-CB-CG	5.36	122.41	113.30
1	C	169	ASP	CB-CG-OD1	5.36	123.12	118.30
1	B	105	ALA	N-CA-CB	5.35	117.59	110.10
1	D	90	GLU	OE1-CD-OE2	-5.30	116.94	123.30
1	A	64	ARG	NE-CZ-NH1	-5.27	117.67	120.30
1	C	191	GLU	OE1-CD-OE2	-5.25	116.99	123.30
1	C	35	ASP	CB-CG-OD1	5.24	123.02	118.30
1	B	27	ARG	NE-CZ-NH2	-5.18	117.71	120.30
1	C	136	TYR	CA-CB-CG	5.16	123.20	113.40
1	C	90	GLU	OE1-CD-OE2	-5.13	117.14	123.30
1	B	175	ARG	NE-CZ-NH2	-5.13	117.73	120.30
1	B	217	ARG	NE-CZ-NH2	-5.10	117.75	120.30
1	B	43	TYR	CB-CG-CD2	-5.08	117.95	121.00
1	A	194	LEU	CB-CG-CD1	5.05	119.58	111.00
1	D	64	ARG	CD-NE-CZ	5.04	130.65	123.60
1	A	61	GLU	OE1-CD-OE2	-5.00	117.30	123.30

There are no chirality outliers.

All (8) planarity outliers are listed below:

Mol	Chain	Res	Type	Group
1	A	270	GLU	Mainchain,Peptide
1	B	270	GLU	Mainchain,Peptide
1	C	270	GLU	Mainchain,Peptide
1	D	270	GLU	Mainchain,Peptide

## 5.2 Too-close contacts ⓘ

In the following table, the Non-H and H(model) columns list the number of non-hydrogen atoms and hydrogen atoms in the chain respectively. The H(added) column lists the number of hydrogen atoms added and optimized by MolProbity. The Clashes column lists the number of clashes within the asymmetric unit, whereas Symm-Clashes lists symmetry related clashes.

Mol	Chain	Non-H	H(model)	H(added)	Clashes	Symm-Clashes
1	A	2258	0	2296	24	0
1	B	2253	0	2292	15	0
1	C	2257	0	2301	25	0
1	D	2261	0	2303	28	0
2	A	21	0	20	0	0
2	B	21	0	20	0	0
2	C	21	0	20	0	0
2	D	21	0	20	0	0
3	B	6	0	8	2	0
4	A	112	0	0	0	0
4	B	171	0	0	2	0
4	C	164	0	0	3	0
4	D	172	0	0	1	0
All	All	9738	0	9280	83	0

The all-atom clashscore is defined as the number of clashes found per 1000 atoms (including hydrogen atoms). The all-atom clashscore for this structure is 5.

All (83) close contacts within the same asymmetric unit are listed below, sorted by their clash magnitude.

Atom-1	Atom-2	Interatomic distance (Å)	Clash overlap (Å)
1:B:228:LEU:HD11	1:D:228:LEU:HD21	1.53	0.91
1:A:248:ASN:HB2	1:A:283:LYS:HE2	1.59	0.84
1:C:138:ILE:HB	1:C:139:PRO:HD2	1.62	0.81
1:D:290[A]:LYS:HG2	1:D:291:PHE:CZ	2.18	0.79
1:B:248:ASN:HD21	1:B:280:GLN:HA	1.55	0.70
1:C:1:MET:HG2	4:C:849:HOH:O	1.92	0.70
1:A:248:ASN:HD21	1:A:280:GLN:HA	1.61	0.65

*Continued on next page...*

*Continued from previous page...*

Atom-1	Atom-2	Interatomic distance (Å)	Clash overlap (Å)
1:D:261:GLU:OE2	1:D:288:LYS:HE2	1.99	0.62
1:D:248:ASN:HD21	1:D:280:GLN:HA	1.67	0.60
1:A:12:LEU:HG	1:A:48:THR:HG22	1.85	0.57
1:C:132:ASN:OD1	1:C:159:LYS:HD2	2.07	0.55
1:D:30:ILE:HD13	1:D:66:ALA:HA	1.89	0.55
1:B:150:GLN:HG3	4:B:815:HOH:O	2.05	0.55
1:C:138:ILE:HB	1:C:139:PRO:CD	2.32	0.54
1:B:106:VAL:HB	1:B:136:TYR:CZ	2.43	0.53
1:D:290[A]:LYS:HG2	1:D:291:PHE:CE2	2.42	0.53
1:B:52:PHE:HA	3:B:704:GOL:H2	1.90	0.52
1:A:86:LYS:HD2	1:D:269:ARG:NH2	2.25	0.52
1:A:115:PHE:HB3	1:A:116:PRO:HD3	1.92	0.52
1:D:290[A]:LYS:HG3	1:D:291:PHE:CE1	2.44	0.51
1:C:229:LYS:HD3	1:C:230:GLU:N	2.25	0.51
1:C:61:GLU:OE2	1:C:64:ARG:NH2	2.34	0.51
1:C:12:LEU:HD11	1:C:254:ILE:HG21	1.91	0.51
1:B:177:LYS:HD3	1:B:185:ILE:HD12	1.93	0.51
1:B:86:LYS:HD2	1:C:269:ARG:NH2	2.26	0.50
1:C:94:TYR:CE2	1:C:98:LEU:HD11	2.45	0.50
1:D:290[A]:LYS:CG	1:D:291:PHE:CE1	2.96	0.49
1:C:106:VAL:HB	1:C:136:TYR:CZ	2.48	0.49
1:A:228:LEU:HD21	1:C:228:LEU:HD11	1.93	0.48
1:D:114:SER:HB2	1:D:116:PRO:HD2	1.95	0.48
1:A:113:PHE:CE1	1:D:271:PRO:HG2	2.48	0.48
1:D:286:ASP:OD1	1:D:290[B]:LYS:HE3	2.13	0.47
1:C:248:ASN:HD21	1:C:280:GLN:HA	1.78	0.47
1:A:145:ASN:O	1:A:146:MET:HB2	2.14	0.47
1:D:208:THR:HG21	1:D:242:ILE:HG12	1.95	0.47
1:C:61:GLU:CD	1:C:64:ARG:HH21	2.16	0.47
1:A:261:GLU:OE2	1:A:288:LYS:HE2	2.14	0.47
1:D:267:TYR:CE2	1:D:275:LYS:HG2	2.50	0.46
1:D:290[A]:LYS:CG	1:D:291:PHE:CZ	2.93	0.46
1:C:145:ASN:O	1:C:146:MET:HB2	2.16	0.46
1:A:145:ASN:O	1:A:146:MET:CB	2.64	0.45
1:C:51:ASN:ND2	1:C:59:LYS:HG2	2.32	0.45
1:B:138:ILE:HG21	1:C:110:TYR:CE1	2.51	0.45
1:A:267:TYR:HE2	1:A:275:LYS:HG3	1.81	0.45
1:A:138:ILE:HB	1:A:139:PRO:HD2	1.99	0.45
1:D:290[A]:LYS:HG3	1:D:291:PHE:CD1	2.53	0.44
1:D:248:ASN:HB2	1:D:283:LYS:HE2	1.98	0.44
1:D:83:VAL:HG22	1:D:109:PHE:H	1.82	0.44

*Continued on next page...*

*Continued from previous page...*

Atom-1	Atom-2	Interatomic distance (Å)	Clash overlap (Å)
1:B:113:PHE:CZ	1:C:271:PRO:HG2	2.51	0.44
1:C:93:LYS:O	1:C:97:GLU:HG3	2.17	0.44
1:A:111:TYR:HB2	1:A:113:PHE:CE2	2.52	0.44
1:C:145:ASN:HB3	4:C:800:HOH:O	2.17	0.44
1:C:194:LEU:HD23	1:C:194:LEU:C	2.38	0.44
1:D:52:PHE:HA	4:D:791:HOH:O	2.18	0.44
1:D:61[B]:GLU:OE2	1:D:64:ARG:NH2	2.50	0.43
1:D:12:LEU:HD11	1:D:254:ILE:HG21	2.01	0.43
1:A:255:LYS:O	1:A:259:LYS:HG3	2.18	0.43
1:C:229:LYS:HZ3	1:C:230:GLU:HA	1.82	0.43
1:A:248:ASN:HB2	1:A:283:LYS:CE	2.39	0.43
1:A:173:LEU:HD11	1:A:185:ILE:HG21	2.00	0.43
1:D:146:MET:HB2	1:D:150:GLN:OE1	2.19	0.43
1:C:229:LYS:HZ2	1:C:230:GLU:HG3	1.83	0.42
1:A:146:MET:HG3	1:A:150:GLN:OE1	2.19	0.42
1:D:148:ILE:HA	1:D:148:ILE:HD13	1.94	0.42
1:B:108:PRO:HB2	1:B:113:PHE:CE2	2.54	0.42
1:A:106:VAL:HB	1:A:136:TYR:CZ	2.54	0.42
1:A:132:ASN:HB3	1:A:161:LEU:HG	2.02	0.42
1:D:138:ILE:HB	1:D:139:PRO:CD	2.50	0.42
1:A:30:ILE:HD13	1:A:66:ALA:HA	2.02	0.42
1:A:86:LYS:HD2	1:D:269:ARG:CZ	2.49	0.42
1:B:153:GLU:OE2	1:B:156:LYS:HE3	2.20	0.42
1:B:12:LEU:HD11	1:B:254:ILE:HG21	2.01	0.42
1:D:138:ILE:HB	1:D:139:PRO:HD2	2.01	0.41
1:D:277:THR:O	1:D:281:VAL:HG23	2.21	0.41
1:B:145:ASN:O	1:B:146:MET:HB2	2.21	0.41
1:B:78:ALA:HB2	1:B:100:TYR:CD2	2.55	0.41
1:B:259:LYS:HA	1:B:263:VAL:O	2.20	0.41
1:A:228:LEU:HD11	1:C:228:LEU:HD21	2.01	0.41
1:A:34:ILE:HG12	1:A:74:ILE:HD13	2.02	0.41
1:A:138:ILE:HG21	1:D:110:TYR:CE1	2.56	0.41
3:B:704:GOL:H31	4:B:774:HOH:O	2.20	0.40
1:C:208:THR:HG21	1:C:242:ILE:HG12	2.03	0.40
1:C:273:THR:HG21	4:C:826:HOH:O	2.20	0.40

There are no symmetry-related clashes.

## 5.3 Torsion angles

### 5.3.1 Protein backbone

In the following table, the Percentiles column shows the percent Ramachandran outliers of the chain as a percentile score with respect to all X-ray entries followed by that with respect to entries of similar resolution.

The Analysed column shows the number of residues for which the backbone conformation was analysed, and the total number of residues.

Mol	Chain	Analysed	Favoured	Allowed	Outliers	Percentiles	
1	A	285/293 (97%)	277 (97%)	5 (2%)	3 (1%)	17	6
1	B	284/293 (97%)	276 (97%)	7 (2%)	1 (0%)	39	27
1	C	285/293 (97%)	276 (97%)	8 (3%)	1 (0%)	39	27
1	D	286/293 (98%)	278 (97%)	8 (3%)	0	100	100
All	All	1140/1172 (97%)	1107 (97%)	28 (2%)	5 (0%)	39	27

All (5) Ramachandran outliers are listed below:

Mol	Chain	Res	Type
1	A	146	MET
1	B	146	MET
1	C	146	MET
1	A	110	TYR
1	A	168	GLY

### 5.3.2 Protein sidechains

In the following table, the Percentiles column shows the percent sidechain outliers of the chain as a percentile score with respect to all X-ray entries followed by that with respect to entries of similar resolution.

The Analysed column shows the number of residues for which the sidechain conformation was analysed, and the total number of residues.

Mol	Chain	Analysed	Rotameric	Outliers	Percentiles	
1	A	239/242 (99%)	234 (98%)	5 (2%)	61	53
1	B	238/242 (98%)	229 (96%)	9 (4%)	40	25
1	C	239/242 (99%)	235 (98%)	4 (2%)	68	63
1	D	240/242 (99%)	231 (96%)	9 (4%)	40	25
All	All	956/968 (99%)	929 (97%)	27 (3%)	51	39



All (27) residues with a non-rotameric sidechain are listed below:

Mol	Chain	Res	Type
1	A	79	GLN
1	A	176	LEU
1	A	189	PHE
1	A	190	ASP
1	A	194	LEU
1	B	24	LYS
1	B	79	GLN
1	B	176	LEU
1	B	177	LYS
1	B	189	PHE
1	B	194	LEU
1	B	230	GLU
1	B	279	GLU
1	B	293	SER
1	C	24	LYS
1	C	79	GLN
1	C	176	LEU
1	C	189	PHE
1	D	24	LYS
1	D	72	ASP
1	D	79	GLN
1	D	112	LYS
1	D	139	PRO
1	D	146	MET
1	D	176	LEU
1	D	189	PHE
1	D	190	ASP

Some sidechains can be flipped to improve hydrogen bonding and reduce clashes. All (8) such sidechains are listed below:

Mol	Chain	Res	Type
1	A	248	ASN
1	B	51	ASN
1	B	120	HIS
1	B	248	ASN
1	C	51	ASN
1	C	120	HIS
1	C	248	ASN
1	D	248	ASN

### 5.3.3 RNA ⓘ

There are no RNA molecules in this entry.

## 5.4 Non-standard residues in protein, DNA, RNA chains ⓘ

There are no non-standard protein/DNA/RNA residues in this entry.

## 5.5 Carbohydrates ⓘ

There are no carbohydrates in this entry.

## 5.6 Ligand geometry ⓘ

5 ligands are modelled in this entry.

In the following table, the Counts columns list the number of bonds (or angles) for which Mogul statistics could be retrieved, the number of bonds (or angles) that are observed in the model and the number of bonds (or angles) that are defined in the chemical component dictionary. The Link column lists molecule types, if any, to which the group is linked. The Z score for a bond length (or angle) is the number of standard deviations the observed value is removed from the expected value. A bond length (or angle) with  $|Z| > 2$  is considered an outlier worth inspection. RMSZ is the root-mean-square of all Z scores of the bond lengths (or angles).

Mol	Type	Chain	Res	Link	Bond lengths			Bond angles		
					Counts	RMSZ	# $ Z  > 2$	Counts	RMSZ	# $ Z  > 2$
2	HMN	A	700	-	17,20,20	0.57	0	20,27,27	1.13	1 (5%)
2	HMN	B	701	-	17,20,20	0.58	0	20,27,27	1.20	3 (15%)
3	GOL	B	704	-	5,5,5	0.21	0	5,5,5	0.59	0
2	HMN	C	702	-	17,20,20	0.57	0	20,27,27	1.64	4 (20%)
2	HMN	D	703	-	17,20,20	0.69	0	20,27,27	1.36	4 (20%)

In the following table, the Chirals column lists the number of chiral outliers, the number of chiral centers analysed, the number of these observed in the model and the number defined in the chemical component dictionary. Similar counts are reported in the Torsion and Rings columns. '-' means no outliers of that kind were identified.

Mol	Type	Chain	Res	Link	Chirals	Torsions	Rings
2	HMN	A	700	-	-	0/26/30/30	0/0/0/0
2	HMN	B	701	-	-	0/26/30/30	0/0/0/0
3	GOL	B	704	-	-	0/4/4/4	0/0/0/0
2	HMN	C	702	-	-	0/26/30/30	0/0/0/0

*Continued on next page...*

*Continued from previous page...*

Mol	Type	Chain	Res	Link	Chirals	Torsions	Rings
2	HMN	D	703	-	-	0/26/30/30	0/0/0/0

There are no bond length outliers.

All (12) bond angle outliers are listed below:

Mol	Chain	Res	Type	Atoms	Z	Observed(°)	Ideal(°)
2	C	702	HMN	C9-C8-C7	-3.80	103.57	112.48
2	C	702	HMN	C3-C2-C1	-3.55	104.81	111.39
2	C	702	HMN	O10-C10-C11	-2.86	116.82	122.06
2	D	703	HMN	O4-C4-C3	-2.58	104.22	109.22
2	A	700	HMN	C9-C8-C7	-2.54	106.51	112.48
2	B	701	HMN	O4-C4-C3	-2.40	104.56	109.22
2	D	703	HMN	C8-C7-C6	-2.32	108.70	112.47
2	D	703	HMN	O10-C10-C11	-2.21	118.00	122.06
2	D	703	HMN	C3-C2-C1	-2.13	107.43	111.39
2	B	701	HMN	C8-C7-C6	-2.12	109.02	112.47
2	B	701	HMN	O2-C2-C3	-2.05	104.87	108.94
2	C	702	HMN	O10-C10-N2	2.03	126.00	121.86

There are no chirality outliers.

There are no torsion outliers.

There are no ring outliers.

1 monomer is involved in 2 short contacts:

Mol	Chain	Res	Type	Clashes	Symm-Clashes
3	B	704	GOL	2	0

## 5.7 Other polymers [i](#)

There are no such residues in this entry.

## 5.8 Polymer linkage issues [i](#)

There are no chain breaks in this entry.

## 6 Fit of model and data ⓘ

### 6.1 Protein, DNA and RNA chains ⓘ

In the following table, the column labelled ‘#RSRZ> 2’ contains the number (and percentage) of RSRZ outliers, followed by percent RSRZ outliers for the chain as percentile scores relative to all X-ray entries and entries of similar resolution. The OWAB column contains the minimum, median, 95<sup>th</sup> percentile and maximum values of the occupancy-weighted average B-factor per residue. The column labelled ‘Q< 0.9’ lists the number of (and percentage) of residues with an average occupancy less than 0.9.

Mol	Chain	Analysed	<RSRZ>	#RSRZ>2	OWAB(Å <sup>2</sup> )	Q<0.9
1	A	288/293 (98%)	0.16	4 (1%) 78 85	17, 25, 40, 55	0
1	B	288/293 (98%)	-0.06	6 (2%) 67 75	14, 20, 33, 58	0
1	C	288/293 (98%)	-0.03	7 (2%) 62 72	15, 21, 34, 58	0
1	D	288/293 (98%)	-0.04	7 (2%) 62 72	15, 21, 32, 60	0
All	All	1152/1172 (98%)	0.00	24 (2%) 67 75	14, 22, 36, 60	0

All (24) RSRZ outliers are listed below:

Mol	Chain	Res	Type	RSRZ
1	D	139	PRO	7.1
1	A	139	PRO	6.3
1	A	1	MET	5.9
1	C	139	PRO	5.4
1	D	138	ILE	5.2
1	C	1	MET	4.8
1	B	145	ASN	4.6
1	B	1	MET	4.5
1	C	145	ASN	4.1
1	A	145	ASN	3.7
1	D	1	MET	3.6
1	B	138	ILE	3.5
1	B	293	SER	3.3
1	D	145	ASN	3.3
1	A	138	ILE	3.1
1	C	293	SER	3.0
1	B	139	PRO	2.8
1	C	229	LYS	2.4
1	C	182	ASN	2.3
1	D	146	MET	2.3
1	C	138	ILE	2.3

*Continued on next page...*

*Continued from previous page...*

Mol	Chain	Res	Type	RSRZ
1	D	72	ASP	2.1
1	D	112	LYS	2.1
1	B	279	GLU	2.0

## 6.2 Non-standard residues in protein, DNA, RNA chains [i](#)

There are no non-standard protein/DNA/RNA residues in this entry.

## 6.3 Carbohydrates [i](#)

There are no carbohydrates in this entry.

## 6.4 Ligands [i](#)

In the following table, the Atoms column lists the number of modelled atoms in the group and the number defined in the chemical component dictionary. LLDF column lists the quality of electron density of the group with respect to its neighbouring residues in protein, DNA or RNA chains. The B-factors column lists the minimum, median, 95<sup>th</sup> percentile and maximum values of B factors of atoms in the group. The column labelled 'Q< 0.9' lists the number of atoms with occupancy less than 0.9.

Mol	Type	Chain	Res	Atoms	RSCC	RSR	LLDF	B-factors( $\text{\AA}^2$ )	Q<0.9
3	GOL	B	704	6/6	0.66	0.39	16.43	46,49,49,50	0
2	HMN	A	700	21/21	0.94	0.10	0.81	19,21,25,29	0
2	HMN	B	701	21/21	0.96	0.10	0.52	17,20,25,26	0
2	HMN	C	702	21/21	0.95	0.10	0.37	15,20,27,29	0
2	HMN	D	703	21/21	0.96	0.09	0.31	17,20,27,28	0

## 6.5 Other polymers [i](#)

There are no such residues in this entry.