



Full wwPDB X-ray Structure Validation Report ⓘ

Feb 1, 2016 – 04:31 PM GMT

PDB ID : 4FAU
Title : Structure of Oceanobacillus iheyensis group II intron in the presence of Li+,
Mg2+ and 5'-exon
Authors : Marcia, M.; Pyle, A.M.
Deposited on : 2012-05-22
Resolution : 2.87 Å(reported)

This is a Full wwPDB X-ray Structure Validation Report for a publicly released PDB entry.
We welcome your comments at validation@mail.wwpdb.org
A user guide is available at
<http://wwpdb.org/validation/2016/XrayValidationReportHelp>
with specific help available everywhere you see the ⓘ symbol.

The following versions of software and data (see [references ⓘ](#)) were used in the production of this report:

MolProbity : 4.02b-467
Mogul : 1.7 (RC4), CSD as536be (2015)
Xtriage (Phenix) : 1.9-1692
EDS : rb-20026688
Percentile statistics : 20151230.v01 (using entries in the PDB archive December 30th 2015)
Refmac : 5.8.0135
CCP4 : 6.5.0
Ideal geometry (proteins) : Engh & Huber (2001)
Ideal geometry (DNA, RNA) : Parkinson et al. (1996)
Validation Pipeline (wwPDB-VP) : trunk26865

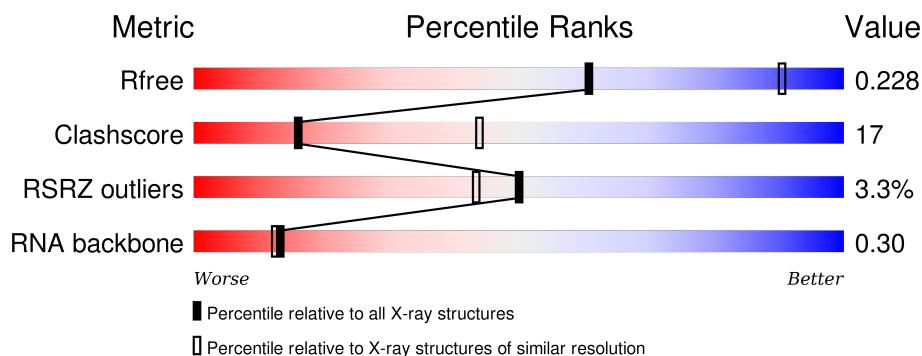
1 Overall quality at a glance ⓘ

The following experimental techniques were used to determine the structure:

X-RAY DIFFRACTION

The reported resolution of this entry is 2.87 Å.

Percentile scores (ranging between 0-100) for global validation metrics of the entry are shown in the following graphic. The table shows the number of entries on which the scores are based.



Metric	Whole archive (#Entries)	Similar resolution (#Entries, resolution range(Å))
R_{free}	91344	1945 (2.90-2.86)
Clashscore	102246	2202 (2.90-2.86)
RSRZ outliers	91569	1950 (2.90-2.86)
RNA backbone	2183	1033 (3.26-2.50)

The table below summarises the geometric issues observed across the polymeric chains and their fit to the electron density. The red, orange, yellow and green segments on the lower bar indicate the fraction of residues that contain outliers for ≥ 3 , 2, 1 and 0 types of geometric quality criteria. A grey segment represents the fraction of residues that are not modelled. The numeric value for each fraction is indicated below the corresponding segment, with a dot representing fractions $\leq 5\%$. The upper red bar (where present) indicates the fraction of residues that have poor fit to the electron density. The numeric value is given above the bar.

Mol	Chain	Length	Quality of chain
1	A	398	<div> <div>3%</div> <div>29%</div> <div>33%</div> <div>30%</div> <div>7%</div> </div>

The following table lists non-polymeric compounds, carbohydrate monomers and non-standard residues in protein, DNA, RNA chains that are outliers for geometric or electron-density-fit criteria:

Mol	Type	Chain	Res	Chirality	Geometry	Clashes	Electron density
2	MG	A	406	-	-	-	X
2	MG	A	414	-	-	-	X
3	SPM	A	425	-	-	-	X

Continued on next page...

Continued from previous page...

Mol	Type	Chain	Res	Chirality	Geometry	Clashes	Electron density
4	EPE	A	426	-	-	-	X
4	EPE	A	427	-	X	-	X

2 Entry composition [i](#)

There are 5 unique types of molecules in this entry. The entry contains 8581 atoms, of which 0 are hydrogens and 0 are deuteriums.

In the tables below, the ZeroOcc column contains the number of atoms modelled with zero occupancy, the AltConf column contains the number of residues with at least one atom in alternate conformation and the Trace column contains the number of residues modelled with at most 2 atoms.

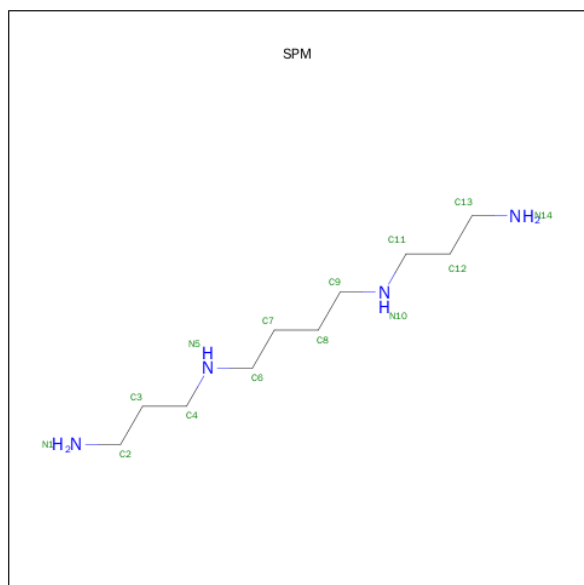
- Molecule 1 is a RNA chain called Group IIC intron.

Mol	Chain	Residues	Atoms					ZeroOcc	AltConf	Trace
1	A	393	Total	C	N	O	P	0	2	0
			8466	3777	1568	2726	395			

- Molecule 2 is MAGNESIUM ION (three-letter code: MG) (formula: Mg).

Mol	Chain	Residues	Atoms		ZeroOcc	AltConf
2	A	24	Total	Mg	0	0
			24	24		

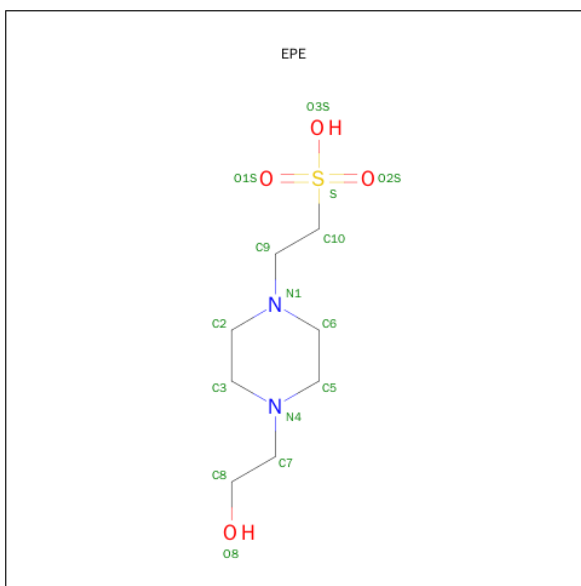
- Molecule 3 is SPERMINE (three-letter code: SPM) (formula: C₁₀H₂₆N₄).



Mol	Chain	Residues	Atoms			ZeroOcc	AltConf
3	A	1	Total	C	N	0	0
			14	10	4		

- Molecule 4 is 4-(2-HYDROXYETHYL)-1-PIPERAZINE ETHANESULFONIC ACID

(three-letter code: EPE) (formula: $C_8H_{18}N_2O_4S$).



Mol	Chain	Residues	Atoms					ZeroOcc	AltConf
4	A	1	Total	C	N	O	S	0	0
			12	6	2	3	1		
4	A	1	Total	C	O	S		0	0
			5	1	3	1			
4	A	1	Total	C	O	S		0	0
			5	1	3	1			

- Molecule 5 is water.

Mol	Chain	Residues	Atoms		ZeroOcc	AltConf
5	A	55	Total	O	0	0
			55	55		

4 Data and refinement statistics

Property	Value	Source
Space group	P 21 21 21	Depositor
Cell constants a, b, c, α , β , γ	89.80 Å 95.83 Å 227.30 Å 90.00° 90.00° 90.00°	Depositor
Resolution (Å)	48.88 – 2.87 48.88 – 2.87	Depositor EDS
% Data completeness (in resolution range)	98.1 (48.88-2.87) 98.1 (48.88-2.87)	Depositor EDS
R_{merge}	0.04	Depositor
R_{sym}	(Not available)	Depositor
$\langle I/\sigma(I) \rangle$ ¹	1.65 (at 2.86 Å)	Xtriage
Refinement program	REFMAC 5.6.0117	Depositor
R, R_{free}	0.196 , 0.232 0.194 , 0.228	Depositor DCC
R_{free} test set	2262 reflections (5.31%)	DCC
Wilson B-factor (Å ²)	85.3	Xtriage
Anisotropy	0.374	Xtriage
Bulk solvent k_{sol} (e/Å ³), B_{sol} (Å ²)	0.22 , 50.3	EDS
Estimated twinning fraction	No twinning to report.	Xtriage
L-test for twinning ²	$\langle L \rangle = 0.48$, $\langle L^2 \rangle = 0.31$	Xtriage
Outliers	0 of 44862 reflections	Xtriage
F_o, F_c correlation	0.95	EDS
Total number of atoms	8581	wwPDB-VP
Average B, all atoms (Å ²)	102.0	wwPDB-VP

Xtriage's analysis on translational NCS is as follows: *The largest off-origin peak in the Patterson function is 3.06% of the height of the origin peak. No significant pseudotranslation is detected.*

¹Intensities estimated from amplitudes.

²Theoretical values of $\langle |L| \rangle$, $\langle L^2 \rangle$ for acentric reflections are 0.5, 0.375 respectively for untwinned datasets, and 0.333, 0.2 for perfectly twinned datasets.

5 Model quality [i](#)

5.1 Standard geometry [i](#)

Bond lengths and bond angles in the following residue types are not validated in this section: MG, EPE, SPM

The Z score for a bond length (or angle) is the number of standard deviations the observed value is removed from the expected value. A bond length (or angle) with $|Z| > 5$ is considered an outlier worth inspection. RMSZ is the root-mean-square of all Z scores of the bond lengths (or angles).

Mol	Chain	Bond lengths		Bond angles	
		RMSZ	$\# Z > 5$	RMSZ	$\# Z > 5$
1	A	1.97	4/9495 (0.0%)	1.97	251/14809 (1.7%)

All (4) bond length outliers are listed below:

Mol	Chain	Res	Type	Atoms	Z	Observed(Å)	Ideal(Å)
1	A	289[A]	C	C1'-N1	130.81	3.44	1.48
1	A	289[B]	C	C1'-N1	130.81	3.44	1.48
1	A	69	C	O3'-P	5.45	1.67	1.61
1	A	168	U	O3'-P	-5.11	1.55	1.61

All (251) bond angle outliers are listed below:

Mol	Chain	Res	Type	Atoms	Z	Observed(°)	Ideal(°)
1	A	289[A]	C	O4'-C1'-N1	-97.86	29.91	108.20
1	A	289[B]	C	O4'-C1'-N1	-97.86	29.91	108.20
1	A	289[A]	C	C2-N1-C1'	47.04	170.55	118.80
1	A	289[B]	C	C2-N1-C1'	47.04	170.55	118.80
1	A	289[A]	C	C6-N1-C1'	-46.65	64.82	120.80
1	A	289[B]	C	C6-N1-C1'	-46.65	64.82	120.80
1	A	49	A	O5'-P-OP2	-16.41	90.93	105.70
1	A	48	G	O5'-P-OP2	-16.04	91.27	105.70
1	A	276	A	O5'-P-OP1	-15.54	91.71	105.70
1	A	174	A	O5'-P-OP1	15.23	128.98	110.70
1	A	197	C	O3'-P-O5'	12.09	126.97	104.00
1	A	197	C	O5'-P-OP1	-11.76	95.11	105.70
1	A	289[A]	C	N1-C1'-C2'	-11.64	98.87	114.00
1	A	289[B]	C	N1-C1'-C2'	-11.64	98.87	114.00
1	A	87	G	O3'-P-O5'	-11.38	82.38	104.00
1	A	366	A	O5'-P-OP2	-11.11	95.70	105.70
1	A	206	A	P-O3'-C3'	10.80	132.66	119.70

Continued on next page...

Continued from previous page...

Mol	Chain	Res	Type	Atoms	Z	Observed(°)	Ideal(°)
1	A	37	U	P-O3'-C3'	-10.77	106.78	119.70
1	A	111	G	O5'-P-OP2	-10.68	96.09	105.70
1	A	116	C	O5'-P-OP2	10.67	123.51	110.70
1	A	54	A	O3'-P-O5'	-10.21	84.59	104.00
1	A	51	G	P-O3'-C3'	-10.20	107.46	119.70
1	A	89	G	O5'-P-OP2	-10.09	96.62	105.70
1	A	86	C	O3'-P-O5'	-9.94	85.11	104.00
1	A	-3	U	P-O3'-C3'	-9.79	107.95	119.70
1	A	367	C	O5'-P-OP2	-9.76	96.92	105.70
1	A	246	A	P-O3'-C3'	-9.74	108.02	119.70
1	A	239	G	P-O3'-C3'	-9.61	108.17	119.70
1	A	152	U	P-O3'-C3'	9.58	131.20	119.70
1	A	196	C	O5'-P-OP1	-9.52	97.13	105.70
1	A	32	G	P-O3'-C3'	9.32	130.88	119.70
1	A	171	A	O5'-P-OP1	-9.26	97.37	105.70
1	A	91	C	O3'-P-O5'	-9.16	86.59	104.00
1	A	28	G	O5'-P-OP2	9.16	121.69	110.70
1	A	58	G	O5'-P-OP2	-8.96	97.64	105.70
1	A	92	G	O5'-P-OP2	8.90	121.38	110.70
1	A	168	U	C2'-C3'-O3'	8.86	129.00	109.50
1	A	171	A	OP1-P-O3'	-8.85	85.73	105.20
1	A	266	G	O5'-P-OP1	-8.73	97.84	105.70
1	A	173	G	O5'-P-OP1	8.66	121.09	110.70
1	A	237	A	O5'-P-OP2	-8.64	97.92	105.70
1	A	341	C	P-O3'-C3'	8.56	129.97	119.70
1	A	57	A	O5'-P-OP1	-8.54	98.01	105.70
1	A	31	U	OP2-P-O3'	8.54	123.98	105.20
1	A	49	A	O3'-P-O5'	-8.51	87.83	104.00
1	A	4	U	P-O3'-C3'	8.50	129.90	119.70
1	A	261	C	OP1-P-O3'	-8.44	86.64	105.20
1	A	85	C	O3'-P-O5'	-8.43	87.98	104.00
1	A	14	G	O5'-P-OP1	-8.42	98.13	105.70
1	A	242	G	O5'-P-OP1	8.39	120.77	110.70
1	A	28	G	O5'-P-OP1	-8.30	98.23	105.70
1	A	87	G	OP2-P-O3'	8.29	123.45	105.20
1	A	179	G	P-O3'-C3'	-8.21	109.84	119.70
1	A	41	G	O5'-P-OP2	8.12	120.45	110.70
1	A	137	A	P-O3'-C3'	8.12	129.44	119.70
1	A	83	G	P-O3'-C3'	8.10	129.42	119.70
1	A	340	U	P-O3'-C3'	8.05	129.36	119.70
1	A	114	G	O5'-P-OP2	8.04	120.35	110.70
1	A	318	A	O3'-P-O5'	-7.93	88.92	104.00

Continued on next page...

Continued from previous page...

Mol	Chain	Res	Type	Atoms	Z	Observed(°)	Ideal(°)
1	A	99	A	O3'-P-O5'	-7.83	89.12	104.00
1	A	112	C	O5'-P-OP2	-7.83	98.66	105.70
1	A	97	G	P-O3'-C3'	-7.81	110.33	119.70
1	A	86	C	OP2-P-O3'	7.79	122.34	105.20
1	A	115	A	P-O3'-C3'	-7.79	110.36	119.70
1	A	283	A	O3'-P-O5'	-7.72	89.32	104.00
1	A	263	C	OP2-P-O3'	7.71	122.16	105.20
1	A	351	C	P-O3'-C3'	7.62	128.84	119.70
1	A	276	A	O3'-P-O5'	-7.58	89.60	104.00
1	A	47	U	O5'-P-OP1	-7.55	98.90	105.70
1	A	127	C	P-O3'-C3'	-7.51	110.69	119.70
1	A	261	C	O3'-P-O5'	7.50	118.25	104.00
1	A	103	U	OP1-P-O3'	-7.48	88.74	105.20
1	A	120	A	O3'-P-O5'	-7.48	89.79	104.00
1	A	80	G	P-O3'-C3'	-7.46	110.74	119.70
1	A	14	G	O5'-P-OP2	7.46	119.65	110.70
1	A	91	C	O5'-P-OP2	7.42	119.60	110.70
1	A	244	G	O5'-P-OP2	7.36	119.53	110.70
1	A	196	C	OP2-P-O3'	7.34	121.34	105.20
1	A	77	A	O5'-P-OP2	-7.32	99.11	105.70
1	A	27	A	O5'-P-OP1	7.32	119.48	110.70
1	A	92	G	OP2-P-O3'	7.27	121.20	105.20
1	A	240	A	O5'-P-OP1	-7.27	99.16	105.70
1	A	168	U	O5'-P-OP1	-7.20	99.22	105.70
1	A	256	U	P-O3'-C3'	-7.13	111.14	119.70
1	A	90	G	O3'-P-O5'	-7.13	90.45	104.00
1	A	184	A	P-O3'-C3'	-7.12	111.16	119.70
1	A	72	A	P-O3'-C3'	-7.11	111.17	119.70
1	A	284	G	O5'-P-OP1	7.07	119.18	110.70
1	A	245	A	P-O3'-C3'	7.06	128.18	119.70
1	A	95	A	O3'-P-O5'	7.04	117.38	104.00
1	A	174	A	C5'-C4'-O4'	7.03	117.54	109.10
1	A	69	C	P-O3'-C3'	-7.01	111.29	119.70
1	A	125	U	P-O3'-C3'	-7.01	111.29	119.70
1	A	264	G	O5'-P-OP2	-7.00	99.40	105.70
1	A	352	U	P-O3'-C3'	6.96	128.06	119.70
1	A	148	C	P-O3'-C3'	-6.96	111.35	119.70
1	A	27	A	P-O3'-C3'	-6.96	111.35	119.70
1	A	39	C	P-O3'-C3'	-6.90	111.42	119.70
1	A	300	G	P-O3'-C3'	6.89	127.97	119.70
1	A	103	U	P-O3'-C3'	6.87	127.95	119.70
1	A	66	U	O5'-P-OP1	6.86	118.94	110.70

Continued on next page...

Continued from previous page...

Mol	Chain	Res	Type	Atoms	Z	Observed(°)	Ideal(°)
1	A	238	U	OP1-P-O3'	6.86	120.30	105.20
1	A	263	C	OP1-P-O3'	-6.86	90.11	105.20
1	A	245	A	C4'-C3'-O3'	-6.80	95.12	109.40
1	A	64	G	O5'-P-OP2	-6.79	99.59	105.70
1	A	268	A	O5'-P-OP1	6.79	118.85	110.70
1	A	369	G	P-O3'-C3'	-6.78	111.56	119.70
1	A	144	A	P-O3'-C3'	6.78	127.83	119.70
1	A	50	A	C4'-C3'-O3'	-6.70	95.33	109.40
1	A	102	C	OP1-P-O3'	-6.69	90.48	105.20
1	A	63	A	O3'-P-O5'	6.68	116.69	104.00
1	A	84	U	O3'-P-O5'	-6.66	91.34	104.00
1	A	173	G	O3'-P-O5'	-6.64	91.38	104.00
1	A	350	G	OP1-P-O3'	-6.62	90.64	105.20
1	A	379	U	P-O3'-C3'	6.61	127.64	119.70
1	A	348	A	O3'-P-O5'	-6.58	91.50	104.00
1	A	131	C	O5'-P-OP1	6.57	118.59	110.70
1	A	239	G	OP1-P-O3'	6.57	119.66	105.20
1	A	130	U	O5'-P-OP2	-6.57	99.79	105.70
1	A	350	G	OP2-P-O3'	6.52	119.55	105.20
1	A	15	G	OP2-P-O3'	6.51	119.53	105.20
1	A	374	G	OP2-P-O3'	6.51	119.52	105.20
1	A	102	C	OP2-P-O3'	6.47	119.44	105.20
1	A	117	G	OP2-P-O3'	6.46	119.41	105.20
1	A	63	A	OP2-P-O3'	6.46	119.41	105.20
1	A	61	A	P-O3'-C3'	6.45	127.44	119.70
1	A	115	A	O3'-P-O5'	-6.43	91.77	104.00
1	A	192	A	OP2-P-O3'	6.43	119.36	105.20
1	A	80	G	O5'-P-OP2	6.38	118.36	110.70
1	A	59	U	OP1-P-O3'	-6.37	91.18	105.20
1	A	236	G	OP2-P-O3'	6.37	119.21	105.20
1	A	63	A	OP1-P-O3'	-6.33	91.28	105.20
1	A	128	G	P-O3'-C3'	-6.33	112.11	119.70
1	A	198	U	OP1-P-OP2	6.28	129.02	119.60
1	A	193	A	OP2-P-O3'	6.28	119.01	105.20
1	A	41	G	O3'-P-O5'	-6.26	92.10	104.00
1	A	17	U	P-O3'-C3'	6.21	127.15	119.70
1	A	48	G	OP2-P-O3'	6.19	118.82	105.20
1	A	51	G	O3'-P-O5'	-6.19	92.23	104.00
1	A	351	C	OP2-P-O3'	6.19	118.82	105.20
1	A	245	A	O5'-P-OP1	-6.17	100.15	105.70
1	A	241	A	O5'-P-OP2	-6.14	100.17	105.70
1	A	75	G	OP2-P-O3'	6.13	118.69	105.20

Continued on next page...

Continued from previous page...

Mol	Chain	Res	Type	Atoms	Z	Observed(°)	Ideal(°)
1	A	260	A	OP2-P-O3'	6.13	118.69	105.20
1	A	348	A	P-O3'-C3'	-6.13	112.34	119.70
1	A	196	C	O3'-P-O5'	6.13	115.64	104.00
1	A	310	C	P-O3'-C3'	6.10	127.02	119.70
1	A	54	A	OP1-P-O3'	6.08	118.58	105.20
1	A	29	G	O5'-P-OP2	6.08	117.99	110.70
1	A	271	U	O3'-P-O5'	-6.08	92.46	104.00
1	A	277	A	O5'-P-OP2	6.07	117.98	110.70
1	A	271	U	O5'-P-OP2	6.07	117.98	110.70
1	A	76	C	O3'-P-O5'	6.06	115.52	104.00
1	A	267	G	O4'-C1'-N9	6.04	113.04	108.20
1	A	73	A	O3'-P-O5'	-6.04	92.53	104.00
1	A	235	U	P-O3'-C3'	-6.01	112.49	119.70
1	A	239	G	O5'-P-OP1	-5.99	100.31	105.70
1	A	223	A	P-O3'-C3'	-5.96	112.55	119.70
1	A	229	G	O3'-P-O5'	-5.96	92.68	104.00
1	A	275	G	P-O3'-C3'	5.94	126.83	119.70
1	A	308	U	P-O3'-C3'	5.92	126.81	119.70
1	A	375	U	P-O3'-C3'	5.92	126.80	119.70
1	A	76	C	OP2-P-O3'	5.88	118.14	105.20
1	A	198	U	O5'-P-OP2	-5.87	100.42	105.70
1	A	193	A	OP1-P-O3'	-5.86	92.31	105.20
1	A	92	G	O3'-P-O5'	-5.83	92.93	104.00
1	A	62	C	OP2-P-O3'	5.81	117.99	105.20
1	A	64	G	C2'-C3'-O3'	5.81	123.00	113.70
1	A	108	G	P-O3'-C3'	-5.81	112.73	119.70
1	A	61	A	O3'-P-O5'	5.80	115.01	104.00
1	A	237	A	P-O3'-C3'	-5.79	112.76	119.70
1	A	77	A	OP2-P-O3'	5.78	117.92	105.20
1	A	168	U	P-O3'-C3'	5.78	126.63	119.70
1	A	171	A	O3'-P-O5'	5.78	114.98	104.00
1	A	354	G	P-O3'-C3'	5.78	126.63	119.70
1	A	349	A	O5'-P-OP1	5.77	117.62	110.70
1	A	114	G	O3'-P-O5'	-5.76	93.05	104.00
1	A	165	C	P-O3'-C3'	-5.76	112.79	119.70
1	A	193	A	O5'-P-OP2	-5.76	100.52	105.70
1	A	-3	U	OP2-P-O3'	5.76	117.86	105.20
1	A	60	A	O5'-P-OP1	5.74	117.58	110.70
1	A	31	U	P-O3'-C3'	5.72	126.57	119.70
1	A	104	G	OP1-P-O3'	5.71	117.76	105.20
1	A	20	A	P-O3'-C3'	-5.71	112.85	119.70
1	A	319	A	O5'-P-OP1	-5.69	100.58	105.70

Continued on next page...

Continued from previous page...

Mol	Chain	Res	Type	Atoms	Z	Observed(°)	Ideal(°)
1	A	86	C	O5'-P-OP2	5.68	117.51	110.70
1	A	206	A	C2'-C3'-O3'	5.65	122.75	113.70
1	A	242	G	O5'-P-OP2	-5.65	100.62	105.70
1	A	57	A	OP2-P-O3'	5.64	117.61	105.20
1	A	322	A	O5'-P-OP2	-5.62	100.64	105.70
1	A	361	C	O5'-P-OP2	-5.62	100.64	105.70
1	A	96	U	O3'-P-O5'	5.60	114.64	104.00
1	A	6	C	OP2-P-O3'	5.59	117.50	105.20
1	A	74	C	O5'-P-OP1	5.59	117.41	110.70
1	A	126	U	O3'-P-O5'	-5.58	93.39	104.00
1	A	211	U	P-O3'-C3'	-5.58	113.00	119.70
1	A	88	U	O5'-P-OP1	5.55	117.36	110.70
1	A	328	C	P-O3'-C3'	-5.55	113.04	119.70
1	A	55	G	O3'-P-O5'	-5.53	93.49	104.00
1	A	246	A	O5'-P-OP1	-5.51	100.74	105.70
1	A	331	G	P-O3'-C3'	-5.51	113.08	119.70
1	A	100	A	OP2-P-O3'	5.50	117.30	105.20
1	A	85	C	P-O3'-C3'	-5.49	113.12	119.70
1	A	193	A	O5'-P-OP1	5.48	117.28	110.70
1	A	31	U	OP1-P-O3'	-5.46	93.18	105.20
1	A	241	A	OP2-P-O3'	5.45	117.19	105.20
1	A	174	A	O3'-P-O5'	5.45	114.35	104.00
1	A	62	C	O5'-P-OP1	-5.43	100.81	105.70
1	A	197	C	OP1-P-O3'	-5.42	93.28	105.20
1	A	366	A	OP2-P-O3'	5.38	117.04	105.20
1	A	375	U	O5'-P-OP1	5.38	117.16	110.70
1	A	129	G	OP2-P-O3'	5.37	117.02	105.20
1	A	75	G	O5'-P-OP2	5.37	117.14	110.70
1	A	77	A	P-O3'-C3'	5.35	126.12	119.70
1	A	99	A	O5'-P-OP1	5.35	117.11	110.70
1	A	370	A	P-O3'-C3'	-5.34	113.29	119.70
1	A	119	C	O4'-C4'-C3'	-5.34	98.66	104.00
1	A	172	U	OP2-P-O3'	5.33	116.93	105.20
1	A	377	C	O3'-P-O5'	5.33	114.12	104.00
1	A	184	A	O5'-P-OP1	-5.32	100.91	105.70
1	A	241	A	O3'-P-O5'	-5.32	93.89	104.00
1	A	116	C	OP2-P-O3'	5.31	116.88	105.20
1	A	349	A	OP2-P-O3'	5.30	116.85	105.20
1	A	89	G	C2'-C3'-O3'	5.23	122.07	113.70
1	A	382	G	P-O3'-C3'	-5.23	113.42	119.70
1	A	47	U	OP1-P-O3'	5.23	116.70	105.20
1	A	85	C	OP2-P-O3'	5.22	116.69	105.20

Continued on next page...

Continued from previous page...

Mol	Chain	Res	Type	Atoms	Z	Observed(°)	Ideal(°)
1	A	260	A	OP1-P-O3'	-5.22	93.72	105.20
1	A	96	U	O5'-P-OP2	-5.22	101.00	105.70
1	A	177	U	O5'-P-OP1	5.21	116.95	110.70
1	A	274	G	O5'-P-OP2	-5.17	101.04	105.70
1	A	174	A	N9-C1'-C2'	-5.17	106.31	112.00
1	A	170	G	OP2-P-O3'	5.17	116.57	105.20
1	A	126	U	P-O3'-C3'	-5.17	113.50	119.70
1	A	114	G	OP2-P-O3'	5.16	116.55	105.20
1	A	90	G	P-O3'-C3'	-5.16	113.51	119.70
1	A	166	A	P-O3'-C3'	-5.15	113.52	119.70
1	A	319	A	O5'-P-OP2	5.15	116.88	110.70
1	A	349	A	O3'-P-O5'	-5.13	94.25	104.00
1	A	63	A	O5'-P-OP2	-5.11	101.10	105.70
1	A	346	C	P-O3'-C3'	-5.11	113.57	119.70
1	A	346	C	O3'-P-O5'	-5.09	94.32	104.00
1	A	64	G	O3'-P-O5'	5.06	113.62	104.00
1	A	183	A	O3'-P-O5'	5.06	113.62	104.00
1	A	284	G	OP2-P-O3'	5.05	116.32	105.20
1	A	99	A	O4'-C4'-C3'	-5.04	98.95	104.00
1	A	368	C	C1'-C2'-O2'	-5.03	95.50	110.60
1	A	55	G	OP2-P-O3'	5.03	116.27	105.20
1	A	264	G	O5'-P-OP1	5.03	116.73	110.70
1	A	73	A	O5'-P-OP1	5.02	116.72	110.70
1	A	276	A	C5'-C4'-O4'	-5.00	103.10	109.10

There are no chirality outliers.

There are no planarity outliers.

5.2 Too-close contacts ⓘ

In the following table, the Non-H and H(model) columns list the number of non-hydrogen atoms and hydrogen atoms in the chain respectively. The H(added) column lists the number of hydrogen atoms added and optimized by MolProbity. The Clashes column lists the number of clashes within the asymmetric unit, whereas Symm-Clashes lists symmetry related clashes.

Mol	Chain	Non-H	H(model)	H(added)	Clashes	Symm-Clashes
1	A	8466	0	4250	209	0
2	A	24	0	0	0	0
3	A	14	0	26	0	0
4	A	22	0	15	5	0
5	A	55	0	0	8	0

Continued on next page...

Continued from previous page...

Mol	Chain	Non-H	H(model)	H(added)	Clashes	Symm-Clashes
All	All	8581	0	4291	209	0

The all-atom clashscore is defined as the number of clashes found per 1000 atoms (including hydrogen atoms). The all-atom clashscore for this structure is 17.

All (209) close contacts within the same asymmetric unit are listed below, sorted by their clash magnitude.

Atom-1	Atom-2	Interatomic distance (Å)	Clash overlap (Å)
1:A:288[A]:G:N3	1:A:288[A]:G:H5''	1.33	1.41
1:A:66:U:H5'	5:A:535:HOH:O	1.23	1.33
1:A:288[A]:G:C5'	1:A:288[A]:G:N3	1.98	1.25
1:A:39:C:H2'	1:A:40:C:H5''	1.13	1.10
1:A:39:C:C2'	1:A:40:C:H5''	1.83	1.09
1:A:65:U:H5''	5:A:535:HOH:O	1.62	0.99
1:A:-3:U:H6	1:A:-3:U:H5''	1.30	0.96
1:A:352:U:O2'	1:A:353:U:H5'	1.69	0.92
1:A:288[A]:G:C2	1:A:288[A]:G:H5''	2.04	0.92
1:A:167:A:H8	1:A:167:A:H5''	1.39	0.87
1:A:-3:U:C6	1:A:-3:U:H5''	2.11	0.85
1:A:117:G:N7	4:A:427:EPE:O1S	2.10	0.85
1:A:288[B]:G:O6	5:A:545:HOH:O	1.97	0.83
1:A:311:G:H2'	1:A:311:G:N3	1.93	0.81
1:A:161:G:H1	1:A:216:C:H42	1.26	0.79
1:A:60:A:O2'	1:A:61:A:H5'	1.83	0.79
1:A:28:G:N2	1:A:40:C:O2	2.13	0.79
1:A:288[A]:G:C4	1:A:288[A]:G:H5''	2.17	0.77
1:A:39:C:H2'	1:A:40:C:C5'	2.06	0.76
1:A:90:G:H5''	1:A:91:C:OP2	1.89	0.73
1:A:167:A:C8	1:A:167:A:H5''	2.21	0.73
1:A:-1:A:H2'	1:A:0:U:C6	2.25	0.71
1:A:287:A:H8	1:A:287:A:O5'	1.71	0.71
1:A:91:C:N3	1:A:274:G:O2'	2.22	0.71
1:A:141:C:O2'	1:A:385:G:OP1	2.05	0.71
1:A:3:G:H2'	1:A:4:U:H5'	1.73	0.71
1:A:312:C:O2'	1:A:313:A:O4'	2.08	0.70
1:A:343:C:H2'	1:A:344:G:H8	1.56	0.69
1:A:151:A:H4'	1:A:152:U:H3'	1.75	0.68
1:A:288[A]:G:O5'	1:A:288[A]:G:N3	2.26	0.68
1:A:16:G:N1	1:A:255:U:O2	2.19	0.67
1:A:167:A:C2'	1:A:168:U:H5'	2.24	0.67
1:A:291:G:OP2	1:A:291:G:C8	2.48	0.66

Continued on next page...

Continued from previous page...

Atom-1	Atom-2	Interatomic distance (Å)	Clash overlap (Å)
1:A:206:A:O2'	1:A:208:A:C1'	2.44	0.66
1:A:167:A:O2'	1:A:168:U:H5'	1.96	0.66
1:A:244:G:O6	4:A:426:EPE:H62	1.96	0.65
1:A:168:U:O2'	1:A:169:G:OP1	2.10	0.65
1:A:361:C:H2'	1:A:362:G:H8	1.62	0.64
1:A:310:C:H5''	1:A:311:G:H4'	1.80	0.64
1:A:65:U:C5'	5:A:535:HOH:O	2.32	0.64
1:A:66:U:C5'	5:A:535:HOH:O	2.03	0.64
1:A:161:G:H8	1:A:161:G:O5'	1.81	0.63
1:A:355:A:H2'	1:A:356:A:O4'	1.99	0.62
1:A:341:C:H4'	1:A:342:G:O5'	2.00	0.62
1:A:288[A]:G:C2	1:A:288[A]:G:C5'	2.74	0.62
1:A:343:C:H2'	1:A:344:G:C8	2.34	0.62
1:A:362:G:H2'	1:A:363:U:C6	2.34	0.62
1:A:5:G:H4'	1:A:6:C:OP2	1.99	0.62
1:A:115:A:O5'	1:A:115:A:H8	1.83	0.62
1:A:194:G:H1'	1:A:240:A:O2'	2.00	0.62
1:A:107:G:H2'	1:A:107:G:N3	2.14	0.61
1:A:238:U:H6	1:A:238:U:H5'	1.64	0.61
1:A:63:A:O2'	1:A:64:G:H5'	2.00	0.60
1:A:238:U:C6	1:A:238:U:H5'	2.36	0.60
1:A:115:A:O5'	1:A:115:A:C8	2.54	0.60
1:A:378:G:O2'	1:A:379:U:H5'	2.01	0.60
1:A:287:A:OP1	1:A:287:A:C8	2.55	0.60
1:A:290:A:H2'	1:A:291:G:OP2	2.02	0.60
1:A:294:G:H2'	1:A:295:U:H5''	1.82	0.60
1:A:288[B]:G:H2'	1:A:289[B]:C:O4'	2.02	0.60
1:A:278:A:H2'	1:A:279:C:O4'	2.02	0.59
1:A:292:A:H2'	1:A:292:A:OP2	2.02	0.59
1:A:288[B]:G:N7	1:A:289[B]:C:C4	2.71	0.59
1:A:307:G:H2'	1:A:307:G:N3	2.17	0.59
1:A:35:A:O2'	1:A:37:U:OP2	2.21	0.59
1:A:0:U:H4'	1:A:375:U:OP1	2.02	0.59
1:A:39:C:C3'	1:A:40:C:H5''	2.31	0.58
1:A:174:A:H4'	1:A:238:U:O2'	2.02	0.58
1:A:287:A:P	1:A:287:A:H8	2.27	0.58
1:A:16:G:N2	1:A:256:U:H1'	2.19	0.57
1:A:16:G:H8	1:A:16:G:H5''	1.68	0.57
1:A:316:G:C2	1:A:317:G:H1'	2.38	0.57
1:A:290:A:C2'	1:A:291:G:OP2	2.50	0.57
1:A:-4:G:O6	1:A:185:C:N3	2.38	0.56

Continued on next page...

Continued from previous page...

Atom-1	Atom-2	Interatomic distance (Å)	Clash overlap (Å)
1:A:7:C:H2'	1:A:8:C:H6	1.69	0.56
1:A:115:A:H3'	5:A:516:HOH:O	2.06	0.56
1:A:238:U:H6	1:A:238:U:C5'	2.18	0.56
1:A:290:A:C2	1:A:291:G:O6	2.59	0.56
1:A:48:G:N2	1:A:59:U:C5	2.74	0.55
1:A:221:U:C6	1:A:221:U:H5''	2.41	0.55
1:A:206:A:O2'	1:A:208:A:O4'	2.25	0.55
1:A:117:G:N7	4:A:427:EPE:O3S	2.40	0.55
1:A:67:A:N7	1:A:120:A:H2	2.06	0.54
1:A:192:A:H2'	1:A:193:A:C8	2.43	0.54
1:A:122:A:O4'	1:A:247:A:H4'	2.06	0.54
1:A:144:A:H5''	1:A:145:C:OP1	2.09	0.53
1:A:167:A:C5'	1:A:167:A:C8	2.91	0.53
1:A:294:G:O6	1:A:324:G:N2	2.41	0.53
1:A:48:G:C2	1:A:59:U:C5	2.97	0.53
1:A:138:A:H5'	1:A:139:C:H5''	1.90	0.53
1:A:361:C:H2'	1:A:362:G:C8	2.42	0.53
1:A:107:G:C2'	1:A:107:G:N3	2.71	0.53
1:A:120:A:OP1	1:A:237:A:O2'	2.27	0.52
1:A:137:A:H4'	1:A:138:A:O5'	2.10	0.52
1:A:328:C:N4	1:A:329:A:H62	2.07	0.52
1:A:94:C:H2'	1:A:95:A:H5'	1.90	0.52
1:A:295:U:H5''	1:A:295:U:H6	1.74	0.52
1:A:7:C:H2'	1:A:8:C:C6	2.45	0.51
1:A:320:G:O2'	1:A:321:G:H5'	2.11	0.51
1:A:196:C:H2'	1:A:197:C:C6	2.46	0.51
1:A:221:U:H6	1:A:221:U:H5''	1.77	0.50
1:A:3:G:C2'	1:A:4:U:H5'	2.40	0.50
1:A:94:C:C2'	1:A:95:A:H5'	2.41	0.50
1:A:361:C:O2'	1:A:362:G:H5'	2.11	0.50
1:A:295:U:H6	1:A:295:U:C5'	2.23	0.50
1:A:63:A:H2'	1:A:64:G:H8	1.76	0.50
1:A:26:U:H4'	1:A:66:U:OP1	2.11	0.50
1:A:206:A:O2'	1:A:208:A:H1'	2.11	0.50
1:A:351:C:O2'	1:A:352:U:H5'	2.12	0.49
1:A:213:G:H2'	1:A:214:U:C6	2.47	0.49
1:A:288[B]:G:N7	1:A:289[B]:C:N4	2.60	0.49
1:A:356:A:OP2	1:A:356:A:H8	1.96	0.49
1:A:300:G:N2	1:A:317:G:H2'	2.27	0.49
1:A:333:A:N3	1:A:334:U:C5	2.80	0.49
1:A:288[A]:G:O5'	1:A:288[A]:G:N2	2.44	0.48

Continued on next page...

Continued from previous page...

Atom-1	Atom-2	Interatomic distance (Å)	Clash overlap (Å)
1:A:73:A:H2'	1:A:74:C:O4'	2.13	0.48
1:A:131:C:H2'	1:A:132:U:H6	1.79	0.48
1:A:288[A]:G:C4'	1:A:288[A]:G:N3	2.73	0.48
1:A:352:U:C2'	1:A:353:U:H5'	2.44	0.48
1:A:183:A:H2'	1:A:184:A:H8	1.78	0.48
1:A:116:C:OP2	4:A:427:EPE:O1S	2.32	0.48
1:A:130:U:H2'	1:A:131:C:C6	2.48	0.48
1:A:327:A:H2'	1:A:328:C:O4'	2.14	0.47
1:A:335:G:H8	1:A:335:G:O5'	1.96	0.47
1:A:76:C:O2'	1:A:77:A:H5'	2.14	0.47
1:A:174:A:H5'	1:A:239:G:H5'	1.95	0.47
1:A:368:C:C2	1:A:374:G:N2	2.82	0.47
1:A:64:G:H2'	1:A:65:U:O5'	2.15	0.47
1:A:-3:U:C6	1:A:-3:U:C5'	2.93	0.47
1:A:360:C:H2'	1:A:361:C:C6	2.50	0.47
1:A:40:C:H6	1:A:40:C:H5'	1.79	0.47
1:A:287:A:P	1:A:287:A:C8	3.07	0.47
1:A:295:U:C5'	1:A:295:U:C6	2.98	0.46
1:A:140:A:H2'	1:A:141:C:O4'	2.15	0.46
1:A:368:C:N3	1:A:374:G:C2	2.84	0.46
1:A:117:G:C8	4:A:427:EPE:O1S	2.67	0.46
1:A:362:G:H2'	1:A:363:U:H6	1.77	0.46
1:A:283:A:H2'	1:A:284:G:O4'	2.16	0.46
1:A:127:C:C2	1:A:240:A:C2	3.03	0.46
1:A:132:U:O2'	1:A:133:G:H5'	2.16	0.46
1:A:66:U:H2'	1:A:67:A:C8	2.50	0.46
1:A:350:G:H2'	1:A:351:C:H5'	1.98	0.46
1:A:311:G:N3	1:A:311:G:C2'	2.74	0.46
1:A:328:C:N4	1:A:329:A:N6	2.64	0.45
1:A:27:A:H2'	1:A:28:G:O4'	2.16	0.45
1:A:95:A:H2'	1:A:96:U:H6	1.81	0.45
1:A:83:G:N3	1:A:83:G:C2'	2.80	0.45
1:A:-1:A:H2'	1:A:0:U:H6	1.77	0.45
1:A:282:A:C2	1:A:283:A:C4	3.05	0.45
1:A:161:G:C8	1:A:161:G:O5'	2.67	0.45
1:A:-3:U:H5'	1:A:-2:U:OP2	2.17	0.45
1:A:63:A:H2'	1:A:64:G:C8	2.51	0.45
1:A:61:A:H2'	1:A:62:C:C6	2.52	0.45
1:A:238:U:C5'	1:A:238:U:C6	2.99	0.44
1:A:329:A:H2'	1:A:330:A:H8	1.82	0.44
1:A:377:C:OP2	5:A:546:HOH:O	2.21	0.44

Continued on next page...

Continued from previous page...

Atom-1	Atom-2	Interatomic distance (Å)	Clash overlap (Å)
1:A:78:A:H2'	1:A:79:G:O4'	2.18	0.44
1:A:103:U:O2'	1:A:104:G:H5'	2.17	0.44
1:A:64:G:C2'	1:A:65:U:O5'	2.65	0.44
1:A:255:U:H2'	1:A:256:U:C6	2.53	0.44
1:A:131:C:H2'	1:A:132:U:C6	2.52	0.44
1:A:254:A:C5	1:A:255:U:C4	3.06	0.44
1:A:378:G:H2'	1:A:379:U:C6	2.52	0.44
1:A:49:A:C6	1:A:60:A:N3	2.86	0.44
1:A:196:C:H2'	1:A:197:C:H6	1.82	0.44
1:A:146:U:H2'	1:A:147:U:C6	2.51	0.44
1:A:-3:U:H6	1:A:-3:U:C5'	2.15	0.43
1:A:16:G:H8	1:A:16:G:C5'	2.31	0.43
1:A:83:G:H2'	1:A:83:G:N3	2.32	0.43
1:A:3:G:C6	1:A:105:A:C2	3.07	0.43
1:A:288[B]:G:C5	1:A:289[B]:C:C4	3.07	0.43
1:A:168:U:C2'	1:A:169:G:OP1	2.67	0.43
1:A:243:G:H5''	1:A:244:G:OP2	2.19	0.43
1:A:224:A:H1'	1:A:225:U:O4'	2.19	0.43
1:A:87:G:C2'	1:A:88:U:O5'	2.65	0.43
1:A:31:U:H2'	1:A:32:G:O4'	2.18	0.43
1:A:378:G:C2'	1:A:379:U:H5'	2.50	0.42
1:A:300:G:O2'	1:A:301:U:P	2.77	0.42
1:A:82:U:HO2'	1:A:84:U:H5	1.66	0.42
1:A:154:A:OP2	1:A:155:G:N7	2.52	0.42
1:A:340:U:C6	1:A:340:U:H5'	2.55	0.42
1:A:138:A:H61	1:A:224:A:H8	1.62	0.42
1:A:288[A]:G:C2	1:A:288[A]:G:O5'	2.71	0.42
1:A:166:A:H2'	1:A:167:A:O4'	2.19	0.42
1:A:167:A:H2'	1:A:168:U:H5'	2.01	0.42
1:A:93:A:H2	1:A:281:G:N3	2.17	0.42
1:A:260:A:N6	1:A:378:G:O2'	2.51	0.42
1:A:3:G:C6	1:A:4:U:C2	3.08	0.42
1:A:294:G:C2'	1:A:295:U:H5''	2.50	0.41
1:A:76:C:C2'	1:A:77:A:H5'	2.50	0.41
1:A:152:U:C2'	1:A:152:U:O2	2.67	0.41
1:A:95:A:H2'	1:A:96:U:C6	2.55	0.41
1:A:387:U:H2'	1:A:388:G:O5'	2.20	0.41
1:A:254:A:H2'	1:A:255:U:C6	2.56	0.41
1:A:292:A:O2'	1:A:293:A:P	2.79	0.41
1:A:40:C:C6	1:A:40:C:H5'	2.55	0.41
1:A:316:G:N2	1:A:317:G:H1'	2.36	0.41

Continued on next page...

Continued from previous page...

Atom-1	Atom-2	Interatomic distance (Å)	Clash overlap (Å)
1:A:138:A:OP1	1:A:139:C:C5	2.74	0.41
1:A:370:A:C4	1:A:371:A:C8	3.09	0.41
1:A:16:G:C5'	1:A:16:G:C8	3.04	0.41
1:A:100:A:H2'	1:A:101:U:O4'	2.20	0.41
1:A:116:C:P	5:A:516:HOH:O	2.79	0.40
1:A:91:C:H2'	1:A:92:G:O4'	2.21	0.40
1:A:6:C:C5	1:A:286:C:C4	3.09	0.40
1:A:358:C:H2'	1:A:359:G:O4'	2.21	0.40
1:A:380:A:O2'	1:A:381:C:H5'	2.22	0.40
1:A:27:A:N6	1:A:41:G:O2'	2.48	0.40
1:A:3:G:H2'	1:A:4:U:C5'	2.47	0.40
1:A:195:U:H6	1:A:195:U:H5''	1.85	0.40

There are no symmetry-related clashes.

5.3 Torsion angles [i](#)

5.3.1 Protein backbone [i](#)

There are no protein molecules in this entry.

5.3.2 Protein sidechains [i](#)

There are no protein molecules in this entry.

5.3.3 RNA [i](#)

Mol	Chain	Analysed	Backbone Outliers	Pucker Outliers
1	A	388/398 (97%)	112 (28%)	20 (5%)

All (112) RNA backbone outliers are listed below:

Mol	Chain	Res	Type
1	A	5	G
1	A	7	C
1	A	12	A
1	A	13	U
1	A	16	G
1	A	24	U

Continued on next page...

Continued from previous page...

Mol	Chain	Res	Type
1	A	25	A
1	A	26	U
1	A	28	G
1	A	29	G
1	A	30	G
1	A	35	A
1	A	36	G
1	A	39	C
1	A	40	C
1	A	42	A
1	A	49	A
1	A	50	A
1	A	51	G
1	A	55	G
1	A	65	U
1	A	66	U
1	A	70	C
1	A	83	G
1	A	84	U
1	A	85	C
1	A	88	U
1	A	89	G
1	A	90	G
1	A	91	C
1	A	95	A
1	A	108	G
1	A	111	G
1	A	122	A
1	A	123	C
1	A	134	A
1	A	137	A
1	A	138	A
1	A	139	C
1	A	140	A
1	A	145	C
1	A	146	U
1	A	148	C
1	A	151	A
1	A	152	U
1	A	153	G
1	A	160	G
1	A	163	A

Continued on next page...

Continued from previous page...

Mol	Chain	Res	Type
1	A	165	C
1	A	167	A
1	A	168	U
1	A	169	G
1	A	180	C
1	A	195	U
1	A	196	C
1	A	199	U
1	A	201	C
1	A	207	A
1	A	211	U
1	A	218	G
1	A	221	U
1	A	222	A
1	A	223	A
1	A	229	G
1	A	237	A
1	A	238	U
1	A	243	G
1	A	246	A
1	A	247	A
1	A	254	A
1	A	260	A
1	A	261	C
1	A	277	A
1	A	285	U
1	A	287	A
1	A	290	A
1	A	291	G
1	A	292	A
1	A	293	A
1	A	294	G
1	A	295	U
1	A	296	C
1	A	300	G
1	A	303	C
1	A	307	G
1	A	308	U
1	A	309	U
1	A	310	C
1	A	311	G
1	A	312	C

Continued on next page...

Continued from previous page...

Mol	Chain	Res	Type
1	A	313	A
1	A	316	G
1	A	318	A
1	A	322	A
1	A	329	A
1	A	330	A
1	A	333	A
1	A	334	U
1	A	340	U
1	A	341	C
1	A	342	G
1	A	349	A
1	A	354	G
1	A	355	A
1	A	369	G
1	A	370	A
1	A	372	C
1	A	377	C
1	A	382	G
1	A	383	G
1	A	385	G
1	A	389	U

All (20) RNA pucker outliers are listed below:

Mol	Chain	Res	Type
1	A	12	A
1	A	35	A
1	A	58	G
1	A	82	U
1	A	83	G
1	A	137	A
1	A	152	U
1	A	165	C
1	A	166	A
1	A	167	A
1	A	168	U
1	A	174	A
1	A	206	A
1	A	237	A
1	A	292	A
1	A	295	U

Continued on next page...

Continued from previous page...

Mol	Chain	Res	Type
1	A	320	G
1	A	333	A
1	A	340	U
1	A	341	C

5.4 Non-standard residues in protein, DNA, RNA chains ⓘ

There are no non-standard protein/DNA/RNA residues in this entry.

5.5 Carbohydrates ⓘ

There are no carbohydrates in this entry.

5.6 Ligand geometry ⓘ

Of 28 ligands modelled in this entry, 24 are monoatomic - leaving 4 for Mogul analysis.

In the following table, the Counts columns list the number of bonds (or angles) for which Mogul statistics could be retrieved, the number of bonds (or angles) that are observed in the model and the number of bonds (or angles) that are defined in the chemical component dictionary. The Link column lists molecule types, if any, to which the group is linked. The Z score for a bond length (or angle) is the number of standard deviations the observed value is removed from the expected value. A bond length (or angle) with $|Z| > 2$ is considered an outlier worth inspection. RMSZ is the root-mean-square of all Z scores of the bond lengths (or angles).

Mol	Type	Chain	Res	Link	Bond lengths			Bond angles		
					Counts	RMSZ	# $ Z > 2$	Counts	RMSZ	# $ Z > 2$
3	SPM	A	425	-	13,13,13	0.60	0	12,12,12	1.53	4 (33%)
4	EPE	A	426	-	11,12,15	2.35	1 (9%)	12,16,20	6.56	6 (50%)
4	EPE	A	427	-	4,4,15	2.00	2 (50%)	3,6,20	8.74	2 (66%)
4	EPE	A	428	-	4,4,15	1.73	1 (25%)	3,6,20	2.00	2 (66%)

In the following table, the Chirals column lists the number of chiral outliers, the number of chiral centers analysed, the number of these observed in the model and the number defined in the chemical component dictionary. Similar counts are reported in the Torsion and Rings columns. '-' means no outliers of that kind were identified.

Mol	Type	Chain	Res	Link	Chirals	Torsions	Rings
3	SPM	A	425	-	-	0/11/11/11	0/0/0/0
4	EPE	A	426	-	-	0/6/14/19	0/1/1/1

Continued on next page...

Continued from previous page...

Mol	Type	Chain	Res	Link	Chirals	Torsions	Rings
4	EPE	A	427	-	-	0/0/0/19	0/0/0/1
4	EPE	A	428	-	-	0/0/0/19	0/0/0/1

All (4) bond length outliers are listed below:

Mol	Chain	Res	Type	Atoms	Z	Observed(Å)	Ideal(Å)
4	A	427	EPE	O3S-S	2.40	1.63	1.47
4	A	428	EPE	O3S-S	2.74	1.65	1.47
4	A	427	EPE	O2S-S	2.90	1.48	1.43
4	A	426	EPE	O3S-S	7.39	1.65	1.46

All (14) bond angle outliers are listed below:

Mol	Chain	Res	Type	Atoms	Z	Observed(°)	Ideal(°)
4	A	427	EPE	O3S-S-O1S	-12.27	84.88	111.87
4	A	426	EPE	O3S-S-O2S	-11.53	84.77	111.61
4	A	426	EPE	O3S-S-O1S	-11.18	85.59	111.61
4	A	427	EPE	O3S-S-O2S	-8.72	92.69	111.87
4	A	428	EPE	O2S-S-O1S	-2.11	112.13	117.96
4	A	428	EPE	O3S-S-O1S	-2.07	107.32	111.87
3	A	425	SPM	C12-C11-N10	2.05	117.08	111.96
3	A	425	SPM	C7-C6-N5	2.10	117.22	111.96
3	A	425	SPM	C11-N10-C9	2.85	123.43	113.35
4	A	426	EPE	C9-C10-S	3.09	122.08	112.51
3	A	425	SPM	C6-N5-C4	3.11	124.38	113.35
4	A	426	EPE	O2S-S-O1S	4.16	128.64	113.48
4	A	426	EPE	O2S-S-C10	6.44	112.40	106.91
4	A	426	EPE	O1S-S-C10	13.54	118.46	106.91

There are no chirality outliers.

There are no torsion outliers.

There are no ring outliers.

2 monomers are involved in 5 short contacts:

Mol	Chain	Res	Type	Clashes	Symm-Clashes
4	A	426	EPE	1	0
4	A	427	EPE	4	0

5.7 Other polymers [i](#)

There are no such residues in this entry.

5.8 Polymer linkage issues [i](#)

There are no chain breaks in this entry.

6 Fit of model and data ⓘ

6.1 Protein, DNA and RNA chains ⓘ

In the following table, the column labelled ‘#RSRZ> 2’ contains the number (and percentage) of RSRZ outliers, followed by percent RSRZ outliers for the chain as percentile scores relative to all X-ray entries and entries of similar resolution. The OWAB column contains the minimum, median, 95th percentile and maximum values of the occupancy-weighted average B-factor per residue. The column labelled ‘Q< 0.9’ lists the number of (and percentage) of residues with an average occupancy less than 0.9.

Mol	Chain	Analysed	<RSRZ>	#RSRZ>2		OWAB(Å ²)	Q<0.9
1	A	393/398 (98%)	0.70	13 (3%)	50 43	43, 86, 194, 317	1 (0%)

All (13) RSRZ outliers are listed below:

Mol	Chain	Res	Type	RSRZ
1	A	311	G	3.4
1	A	161	G	3.4
1	A	287	A	3.0
1	A	83	G	3.0
1	A	288[A]	G	2.9
1	A	207	A	2.8
1	A	341	C	2.8
1	A	348	A	2.6
1	A	289[A]	C	2.4
1	A	319	A	2.3
1	A	331	G	2.1
1	A	315	G	2.0
1	A	361	C	2.0

6.2 Non-standard residues in protein, DNA, RNA chains ⓘ

There are no non-standard protein/DNA/RNA residues in this entry.

6.3 Carbohydrates ⓘ

There are no carbohydrates in this entry.

6.4 Ligands ⓘ

In the following table, the Atoms column lists the number of modelled atoms in the group and the number defined in the chemical component dictionary. LLDF column lists the quality of electron density of the group with respect to its neighbouring residues in protein, DNA or RNA chains. The B-factors column lists the minimum, median, 95th percentile and maximum values of B factors of atoms in the group. The column labelled 'Q< 0.9' lists the number of atoms with occupancy less than 0.9.

Mol	Type	Chain	Res	Atoms	RSCC	RSR	LLDF	B-factors(Å ²)	Q<0.9
2	MG	A	406	1/1	0.87	0.42	15.54	110,110,110,110	0
3	SPM	A	425	14/14	0.58	0.55	15.21	37,45,58,59	14
2	MG	A	414	1/1	0.77	0.81	10.11	72,72,72,72	0
4	EPE	A	426	12/15	0.79	0.34	9.34	74,80,107,116	12
4	EPE	A	427	5/15	0.95	0.30	5.20	44,54,65,68	5
2	MG	A	407	1/1	0.84	0.28	-0.50	80,80,80,80	0
2	MG	A	412	1/1	0.89	0.17	-	68,68,68,68	0
2	MG	A	419	1/1	0.79	0.71	-	90,90,90,90	0
2	MG	A	418	1/1	0.86	0.31	-	50,50,50,50	0
2	MG	A	413	1/1	0.91	0.72	-	68,68,68,68	0
2	MG	A	416	1/1	0.97	0.39	-	79,79,79,79	0
2	MG	A	410	1/1	0.95	0.47	-	69,69,69,69	0
2	MG	A	423	1/1	0.87	0.17	-	112,112,112,112	0
2	MG	A	411	1/1	0.93	0.16	-	36,36,36,36	0
2	MG	A	415	1/1	0.81	0.62	-	81,81,81,81	0
2	MG	A	424	1/1	0.79	0.44	-	73,73,73,73	0
2	MG	A	401	1/1	0.78	0.86	-	71,71,71,71	0
2	MG	A	417	1/1	0.86	0.44	-	69,69,69,69	0
4	EPE	A	428	5/15	0.92	0.37	-	56,69,74,84	5
2	MG	A	422	1/1	0.91	0.59	-	76,76,76,76	0
2	MG	A	421	1/1	0.89	0.28	-	73,73,73,73	0
2	MG	A	420	1/1	0.68	1.08	-	105,105,105,105	0
2	MG	A	405	1/1	0.75	0.23	-	61,61,61,61	0
2	MG	A	409	1/1	0.63	0.72	-	105,105,105,105	0
2	MG	A	403	1/1	0.92	0.11	-	91,91,91,91	0
2	MG	A	404	1/1	0.91	0.25	-	92,92,92,92	0
2	MG	A	402	1/1	0.59	0.84	-	106,106,106,106	0
2	MG	A	408	1/1	0.98	0.29	-	54,54,54,54	0

6.5 Other polymers ⓘ

There are no such residues in this entry.