



# Full wwPDB X-ray Structure Validation Report ⓘ

Jan 31, 2016 – 07:22 PM GMT

PDB ID : 1FBG  
Title : CRYSTALLOGRAPHIC STUDIES OF THE CATALYTIC MECHANISM OF  
THE NEUTRAL FORM OF FRUCTOSE-1,6-BISPHOSPHATASE  
Authors : Zhang, Y.; Liang, J.-Y.; Huang, S.; Ke, H.; Lipscomb, W.N.  
Deposited on : 1992-10-16  
Resolution : 3.00 Å(reported)

This is a Full wwPDB X-ray Structure Validation Report for a publicly released PDB entry.  
We welcome your comments at [validation@mail.wwpdb.org](mailto:validation@mail.wwpdb.org)  
A user guide is available at  
<http://wwpdb.org/validation/2016/XrayValidationReportHelp>  
with specific help available everywhere you see the ⓘ symbol.

---

The following versions of software and data (see [references ⓘ](#)) were used in the production of this report:

MolProbity : 4.02b-467  
Mogul : 1.7 (RC4), CSD as536be (2015)  
Xtriage (Phenix) : **NOT EXECUTED**  
EDS : **NOT EXECUTED**  
Percentile statistics : 20151230.v01 (using entries in the PDB archive December 30th 2015)  
Ideal geometry (proteins) : Engh & Huber (2001)  
Ideal geometry (DNA, RNA) : Parkinson et al. (1996)  
Validation Pipeline (wwPDB-VP) : trunk26865

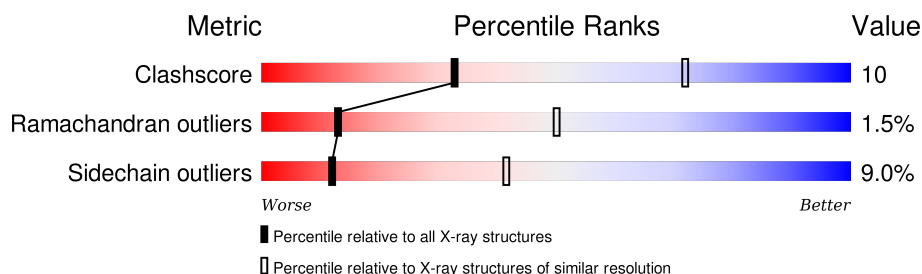
# 1 Overall quality at a glance

The following experimental techniques were used to determine the structure:

*X-RAY DIFFRACTION*

The reported resolution of this entry is 3.00 Å.

Percentile scores (ranging between 0-100) for global validation metrics of the entry are shown in the following graphic. The table shows the number of entries on which the scores are based.



Metric	Whole archive (#Entries)	Similar resolution (#Entries, resolution range(Å))
Clashscore	102246	1912 (3.00-3.00)
Ramachandran outliers	100387	1853 (3.00-3.00)
Sidechain outliers	100360	1856 (3.00-3.00)

The table below summarises the geometric issues observed across the polymeric chains and their fit to the electron density. The red, orange, yellow and green segments on the lower bar indicate the fraction of residues that contain outliers for  $\geq 3$ , 2, 1 and 0 types of geometric quality criteria. A grey segment represents the fraction of residues that are not modelled. The numeric value for each fraction is indicated below the corresponding segment, with a dot representing fractions  $\leq 5\%$ . The upper red bar (where present) indicates the fraction of residues that have poor fit to the electron density. The numeric value is given above the bar.

Note EDS was not executed.

Mol	Chain	Length	Quality of chain
1	A	335	
1	B	335	

## 2 Entry composition

There are 3 unique types of molecules in this entry. The entry contains 5907 atoms, of which 1069 are hydrogens and 0 are deuteriums.

In the tables below, the ZeroOcc column contains the number of atoms modelled with zero occupancy, the AltConf column contains the number of residues with at least one atom in alternate conformation and the Trace column contains the number of residues modelled with at most 2 atoms.

- Molecule 1 is a protein called FRUCTOSE 1,6-BISPHOSPHATASE.

Mol	Chain	Residues	Atoms						ZeroOcc	AltConf	Trace
1	A	313	Total	C	H	N	O	S	0	0	1
			2921	1520	530	403	453	15			
1	B	315	Total	C	H	N	O	S	0	0	1
			2938	1532	531	405	455	15			

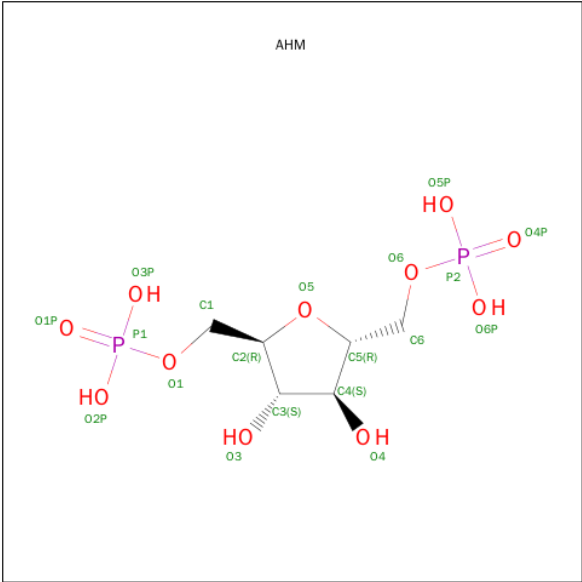
There are 6 discrepancies between the modelled and reference sequences:

Chain	Residue	Modelled	Actual	Comment	Reference
A	20	GLN	GLU	CONFLICT	UNP P00636
A	96	THR	SER	CONFLICT	UNP P00636
A	199	ASN	ASP	CONFLICT	UNP P00636
B	20	GLN	GLU	CONFLICT	UNP P00636
B	96	THR	SER	CONFLICT	UNP P00636
B	199	ASN	ASP	CONFLICT	UNP P00636

- Molecule 2 is MANGANESE (II) ION (three-letter code: MN) (formula: Mn).

Mol	Chain	Residues	Atoms		ZeroOcc	AltConf
2	B	1	Total	Mn	0	0
			1	1		
2	A	1	Total	Mn	0	0
			1	1		

- Molecule 3 is 2,5-ANHYDROMANNITOL-1,6-DIPHOSPHATE (three-letter code: AHM) (formula: C<sub>6</sub>H<sub>14</sub>O<sub>11</sub>P<sub>2</sub>).



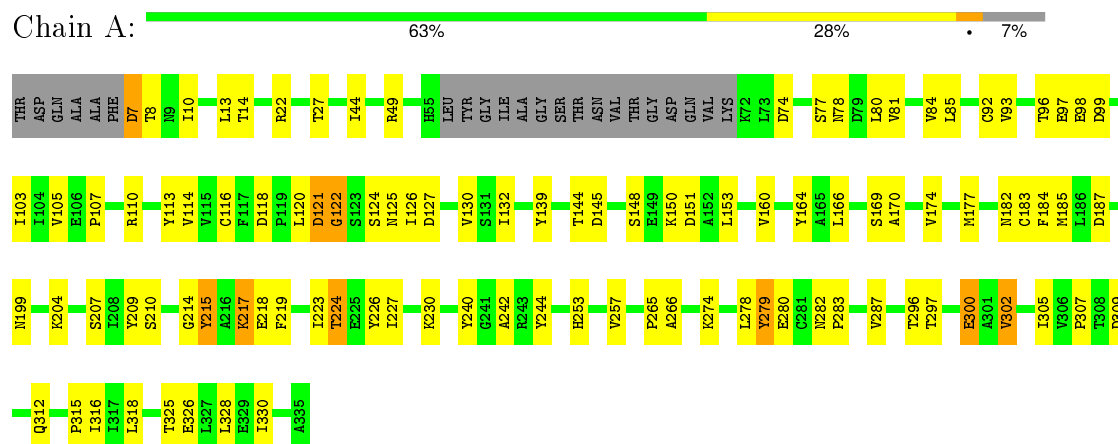
Mol	Chain	Residues	Atoms					ZeroOcc	AltConf
3	A	1	Total	C	H	O	P	0	0
			23	6	4	11	2		
3	B	1	Total	C	H	O	P	0	0
			23	6	4	11	2		

### 3 Residue-property plots

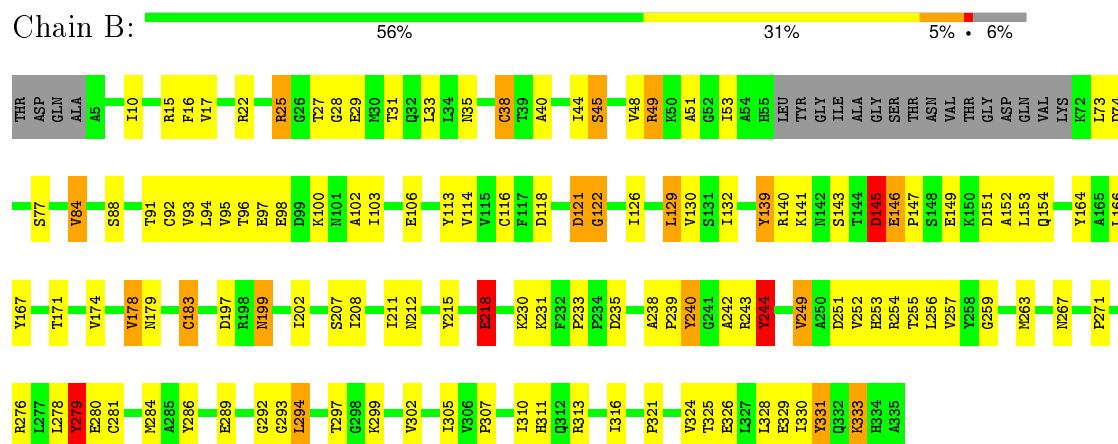
These plots are drawn for all protein, RNA and DNA chains in the entry. The first graphic for a chain summarises the proportions of errors displayed in the second graphic. The second graphic shows the sequence view annotated by issues in geometry and electron density. Residues are color-coded according to the number of geometric quality criteria for which they contain at least one outlier: green = 0, yellow = 1, orange = 2 and red = 3 or more. A red dot above a residue indicates a poor fit to the electron density ( $RSRZ > 2$ ). Stretches of 2 or more consecutive residues without any outlier are shown as a green connector. Residues present in the sample, but not in the model, are shown in grey.

Note EDS was not executed.

#### • Molecule 1: FRUCTOSE 1,6-BISPHOSPHATASE



#### • Molecule 1: FRUCTOSE 1,6-BISPHOSPHATASE



## 4 Data and refinement statistics

Xtriage (Phenix) and EDS were not executed - this section will therefore be incomplete.

Property	Value	Source
Space group	P 32 2 1	Depositor
Cell constants a, b, c, $\alpha$ , $\beta$ , $\gamma$	132.00 Å 132.00 Å 67.40 Å 90.00° 90.00° 120.00°	Depositor
Resolution (Å)	(Not available) – 3.00	Depositor
% Data completeness (in resolution range)	(Not available) ((Not available)-3.00)	Depositor
$R_{merge}$	(Not available)	Depositor
$R_{sym}$	(Not available)	Depositor
Refinement program	X-PLOR	Depositor
R, $R_{free}$	0.190 , (Not available)	Depositor
Estimated twinning fraction	No twinning to report.	Xtriage
Total number of atoms	5907	wwPDB-VP
Average B, all atoms (Å <sup>2</sup> )	44.0	wwPDB-VP

## 5 Model quality [i](#)

### 5.1 Standard geometry [i](#)

Bond lengths and bond angles in the following residue types are not validated in this section: MN, AHM

The Z score for a bond length (or angle) is the number of standard deviations the observed value is removed from the expected value. A bond length (or angle) with  $|Z| > 5$  is considered an outlier worth inspection. RMSZ is the root-mean-square of all Z scores of the bond lengths (or angles).

Mol	Chain	Bond lengths		Bond angles	
		RMSZ	$\# Z  > 5$	RMSZ	$\# Z  > 5$
1	A	0.84	1/2430 (0.0%)	1.56	23/3286 (0.7%)
1	B	0.77	1/2447 (0.0%)	1.57	26/3309 (0.8%)
All	All	0.81	2/4877 (0.0%)	1.56	49/6595 (0.7%)

Chiral center outliers are detected by calculating the chiral volume of a chiral center and verifying if the center is modelled as a planar moiety or with the opposite hand. A planarity outlier is detected by checking planarity of atoms in a peptide group, atoms in a mainchain group or atoms of a sidechain that are expected to be planar.

Mol	Chain	#Chirality outliers	#Planarity outliers
1	A	0	4
1	B	0	7
All	All	0	11

All (2) bond length outliers are listed below:

Mol	Chain	Res	Type	Atoms	Z	Observed(Å)	Ideal(Å)
1	B	122	GLY	N-CA	-7.20	1.35	1.46
1	A	122	GLY	N-CA	-6.48	1.36	1.46

All (49) bond angle outliers are listed below:

Mol	Chain	Res	Type	Atoms	Z	Observed(°)	Ideal(°)
1	A	121	ASP	C-N-CA	14.46	152.67	122.30
1	B	118	ASP	CB-CG-OD2	12.53	129.58	118.30
1	B	121	ASP	CB-CG-OD2	-11.07	108.34	118.30
1	A	121	ASP	CB-CG-OD1	10.22	127.50	118.30
1	B	38	CYS	CA-CB-SG	-9.80	96.37	114.00
1	A	118	ASP	CB-CG-OD1	8.95	126.36	118.30
1	B	121	ASP	C-N-CA	8.88	140.95	122.30

*Continued on next page...*

*Continued from previous page...*

Mol	Chain	Res	Type	Atoms	Z	Observed(°)	Ideal(°)
1	B	116	CYS	CA-CB-SG	-8.51	98.69	114.00
1	B	121	ASP	CB-CG-OD1	8.06	125.56	118.30
1	A	97	GLU	CA-CB-CG	8.06	131.12	113.40
1	A	121	ASP	O-C-N	-8.03	109.56	123.20
1	B	313	ARG	NE-CZ-NH1	7.74	124.17	120.30
1	A	113	TYR	CB-CG-CD2	-7.42	116.55	121.00
1	A	97	GLU	OE1-CD-OE2	-7.25	114.60	123.30
1	A	177	MET	CG-SD-CE	-7.07	88.89	100.20
1	B	118	ASP	OD1-CG-OD2	-6.94	110.11	123.30
1	B	145	ASP	N-CA-C	6.90	129.63	111.00
1	A	215	TYR	CB-CG-CD2	-6.89	116.87	121.00
1	A	139	TYR	CB-CG-CD2	-6.68	116.99	121.00
1	B	240	TYR	CB-CG-CD2	-6.62	117.03	121.00
1	B	49	ARG	NE-CZ-NH1	6.44	123.52	120.30
1	A	287	VAL	CG1-CB-CG2	-6.29	100.84	110.90
1	A	139	TYR	CB-CG-CD1	6.27	124.76	121.00
1	B	25	ARG	NE-CZ-NH1	6.07	123.33	120.30
1	B	333	LYS	CA-CB-CG	5.99	126.59	113.40
1	A	49	ARG	NE-CZ-NH1	5.96	123.28	120.30
1	B	299	LYS	CA-CB-CG	5.81	126.19	113.40
1	A	116	CYS	CA-CB-SG	-5.70	103.73	114.00
1	B	129	LEU	CA-C-N	-5.67	104.72	117.20
1	A	187	ASP	CB-CG-OD1	5.58	123.32	118.30
1	B	22	ARG	NE-CZ-NH1	5.55	123.08	120.30
1	A	14	THR	CA-CB-CG2	5.52	120.13	112.40
1	A	22	ARG	CA-CB-CG	-5.52	101.25	113.40
1	A	279	TYR	CB-CG-CD2	-5.50	117.70	121.00
1	B	280	GLU	OE1-CD-OE2	5.46	129.85	123.30
1	B	17	VAL	CA-CB-CG2	-5.45	102.73	110.90
1	A	219	PHE	CB-CG-CD2	-5.44	116.99	120.80
1	A	120	LEU	CA-C-N	-5.41	105.29	117.20
1	B	118	ASP	N-CA-CB	5.38	120.28	110.60
1	A	120	LEU	O-C-N	5.35	131.26	122.70
1	B	140	ARG	NE-CZ-NH1	5.35	122.97	120.30
1	B	139	TYR	CB-CG-CD1	-5.34	117.79	121.00
1	B	15	ARG	NE-CZ-NH1	5.33	122.96	120.30
1	B	183	CYS	CA-CB-SG	-5.31	104.45	114.00
1	B	249	VAL	CA-CB-CG1	-5.28	102.97	110.90
1	B	16	PHE	CB-CG-CD1	-5.21	117.16	120.80
1	A	22	ARG	NE-CZ-NH2	-5.17	117.72	120.30
1	A	302	VAL	CA-CB-CG1	-5.15	103.17	110.90
1	B	130	VAL	N-CA-CB	-5.09	100.30	111.50



There are no chirality outliers.

All (11) planarity outliers are listed below:

Mol	Chain	Res	Type	Group
1	A	164	TYR	Sidechain
1	A	215	TYR	Sidechain
1	A	240	TYR	Sidechain
1	A	244	TYR	Sidechain
1	B	164	TYR	Sidechain
1	B	215	TYR	Sidechain
1	B	238	ALA	Peptide
1	B	244	TYR	Sidechain
1	B	279	TYR	Sidechain
1	B	286	TYR	Sidechain
1	B	331	TYR	Sidechain

## 5.2 Too-close contacts

In the following table, the Non-H and H(model) columns list the number of non-hydrogen atoms and hydrogen atoms in the chain respectively. The H(added) column lists the number of hydrogen atoms added and optimized by MolProbity. The Clashes column lists the number of clashes within the asymmetric unit, whereas Symm-Clashes lists symmetry related clashes.

Mol	Chain	Non-H	H(model)	H(added)	Clashes	Symm-Clashes
1	A	2391	530	2447	41	0
1	B	2407	531	2461	66	0
2	A	1	0	0	0	0
2	B	1	0	0	0	0
3	A	19	4	10	5	0
3	B	19	4	10	2	0
All	All	4838	1069	4928	102	0

The all-atom clashscore is defined as the number of clashes found per 1000 atoms (including hydrogen atoms). The all-atom clashscore for this structure is 10.

All (102) close contacts within the same asymmetric unit are listed below, sorted by their clash magnitude.

Atom-1	Atom-2	Interatomic distance (Å)	Clash overlap (Å)
1:A:150:LYS:HA	1:A:153:LEU:HD12	1.52	0.91
1:B:141:LYS:HE3	1:B:147:PRO:HG3	1.62	0.81
1:B:297:THR:HG21	1:B:305:ILE:HD11	1.67	0.75
1:A:121:ASP:OD1	3:A:336:AHM:H11	1.88	0.73

*Continued on next page...*

*Continued from previous page...*

Atom-1	Atom-2	Interatomic distance (Å)	Clash overlap (Å)
1:B:281:CYS:HB3	1:B:316:ILE:HD12	1.71	0.72
1:B:96:THR:HG22	1:B:98:GLU:H	1.53	0.71
1:A:92:CYS:HA	1:A:105:VAL:HB	1.73	0.70
1:A:121:ASP:HA	3:A:336:AHM:O2P	1.92	0.69
1:A:96:THR:HG22	1:A:98:GLU:H	1.56	0.69
1:B:121:ASP:HA	3:B:336:AHM:O2P	1.93	0.69
1:A:226:TYR:HE2	1:A:326:GLU:HB3	1.59	0.67
1:A:224:THR:HA	1:A:227:ILE:HD12	1.77	0.67
1:B:93:VAL:HB	1:B:114:VAL:HG13	1.76	0.67
1:B:218:GLU:HB3	1:B:267:ASN:HB2	1.76	0.66
1:B:252:VAL:HG11	1:B:284:MET:SD	2.36	0.66
1:A:302:VAL:HA	1:A:305:ILE:HD12	1.79	0.65
1:A:122:GLY:N	3:A:336:AHM:O2P	2.30	0.64
1:A:278:LEU:HD21	1:A:307:PRO:HG3	1.80	0.64
1:A:226:TYR:HD2	1:A:330:ILE:HD12	1.63	0.63
1:B:211:ILE:HD12	1:B:263:MET:HB2	1.80	0.62
1:B:40:ALA:HB2	1:B:84:VAL:HG21	1.83	0.61
1:A:296:THR:HG21	1:A:328:LEU:HD21	1.83	0.61
1:B:289:GLU:HA	1:B:293:GLY:O	2.01	0.60
1:A:274:LYS:NZ	3:A:336:AHM:H61	2.16	0.60
1:B:33:LEU:HA	1:B:88:SER:HB2	1.82	0.59
1:A:13:LEU:HA	1:A:184:PHE:CE2	2.37	0.59
1:A:153:LEU:HA	1:A:307:PRO:HG2	1.85	0.58
1:B:212:ASN:HB2	1:B:244:TYR:CE2	2.39	0.57
1:A:253:HIS:O	1:A:257:VAL:HG22	2.04	0.57
1:B:73:LEU:HD23	1:B:126:ILE:HD13	1.85	0.56
1:B:29:GLU:HB3	1:B:113:TYR:HE2	1.70	0.56
1:B:122:GLY:N	3:B:336:AHM:O2P	2.38	0.56
1:B:267:ASN:O	1:B:271:PRO:HA	2.05	0.56
1:B:253:HIS:O	1:B:257:VAL:HG22	2.07	0.54
1:A:209:TYR:CZ	1:A:242:ALA:HB2	2.41	0.54
1:A:174:VAL:HG22	1:A:183:CYS:SG	2.47	0.54
1:B:292:GLY:O	1:B:321:PRO:HD3	2.08	0.54
1:B:294:LEU:HB2	1:B:324:VAL:HG11	1.90	0.54
1:B:103:ILE:HD12	1:B:103:ILE:H	1.73	0.54
1:A:217:LYS:HE2	1:B:233:PRO:HD2	1.90	0.53
1:B:325:THR:HA	1:B:328:LEU:HB2	1.90	0.53
1:B:126:ILE:HG12	1:B:132:ILE:HD13	1.89	0.53
1:B:310:ILE:HG13	1:B:311:HIS:CD2	2.45	0.52
1:B:45:SER:HG	1:B:167:TYR:HD1	1.57	0.52
1:B:252:VAL:HG21	1:B:284:MET:SD	2.52	0.50

*Continued on next page...*

*Continued from previous page...*

Atom-1	Atom-2	Interatomic distance (Å)	Clash overlap (Å)
1:B:44:ILE:O	1:B:48:VAL:HG23	2.12	0.50
1:A:121:ASP:CA	3:A:336:AHM:O2P	2.59	0.49
1:A:170:ALA:HA	1:B:49:ARG:HG3	1.95	0.49
1:B:40:ALA:O	1:B:44:ILE:HG13	2.12	0.49
1:B:302:VAL:HG21	1:B:316:ILE:HG13	1.94	0.48
1:B:251:ASP:HA	1:B:254:ARG:NH2	2.28	0.48
1:B:330:ILE:HA	1:B:333:LYS:HB3	1.95	0.48
1:A:7:ASP:O	1:A:10:ILE:HG23	2.13	0.47
1:B:243:ARG:HB3	1:B:254:ARG:NH1	2.29	0.47
1:A:126:ILE:HG12	1:A:132:ILE:HD13	1.95	0.47
1:B:102:ALA:HB3	1:B:149:GLU:HB3	1.97	0.47
1:A:266:ALA:HB2	1:A:315:PRO:HG3	1.96	0.47
1:B:255:THR:HA	1:B:259:GLY:O	2.15	0.47
1:A:166:LEU:HD23	1:B:129:LEU:HD12	1.95	0.46
1:A:316:ILE:HD11	1:A:318:LEU:HD23	1.98	0.46
1:B:154:GLN:O	1:B:307:PRO:HG2	2.15	0.46
1:A:78:ASN:OD1	1:A:96:THR:HG21	2.16	0.46
1:A:81:VAL:O	1:A:85:LEU:HG	2.16	0.46
1:B:33:LEU:HA	1:B:88:SER:CB	2.46	0.46
1:B:230:LYS:HB3	1:B:240:TYR:HB2	1.98	0.46
1:B:28:GLY:O	1:B:31:THR:HB	2.16	0.45
1:A:223:ILE:O	1:A:227:ILE:HG13	2.16	0.45
1:B:254:ARG:HG2	1:B:254:ARG:O	2.17	0.45
1:B:35:ASN:O	1:B:38:CYS:HB2	2.17	0.45
1:A:93:VAL:HA	1:A:103:ILE:O	2.17	0.45
1:B:178:VAL:HG13	1:B:179:ASN:OD1	2.16	0.44
1:B:95:VAL:HG11	1:B:310:ILE:HB	1.98	0.44
1:B:114:VAL:HB	1:B:139:TYR:HB2	1.98	0.44
1:A:214:GLY:HA3	1:B:240:TYR:O	2.18	0.44
1:A:148:SER:O	1:A:151:ASP:HB2	2.18	0.44
1:B:40:ALA:HB2	1:B:84:VAL:CG2	2.47	0.44
1:B:330:ILE:HA	1:B:333:LYS:HD3	1.98	0.44
1:B:166:LEU:O	1:B:171:THR:HA	2.17	0.44
1:A:107:PRO:HA	1:A:110:ARG:HG3	2.00	0.44
1:B:48:VAL:HA	1:B:51:ALA:HB2	2.00	0.44
1:B:202:ILE:HG13	1:B:256:LEU:O	2.18	0.43
1:B:145:ASP:HB2	1:B:146:GLU:H	1.67	0.43
1:B:276:ARG:HB2	1:B:279:TYR:CE1	2.53	0.42
1:B:96:THR:HG22	1:B:97:GLU:N	2.35	0.42
1:A:297:THR:OG1	1:A:300:GLU:HG2	2.18	0.42
1:A:125:ASN:O	1:A:130:VAL:HB	2.20	0.42

*Continued on next page...*

Continued from previous page...

Atom-1	Atom-2	Interatomic distance (Å)	Clash overlap (Å)
1:B:149:GLU:O	1:B:153:LEU:HG	2.20	0.42
1:B:242:ALA:O	1:B:243:ARG:NH1	2.52	0.41
1:B:252:VAL:O	1:B:255:THR:HB	2.21	0.41
1:B:174:VAL:HG13	1:B:183:CYS:SG	2.60	0.41
1:A:81:VAL:HA	1:A:84:VAL:HG22	2.02	0.41
1:A:44:ILE:HG13	1:A:80:LEU:HD23	2.01	0.41
1:A:309:ASP:HB3	1:A:312:GLN:HB3	2.02	0.41
1:B:53:ILE:O	1:B:53:ILE:HG22	2.20	0.41
1:B:93:VAL:O	1:B:94:LEU:HD23	2.20	0.41
1:A:93:VAL:HB	1:A:114:VAL:HG13	2.02	0.41
1:B:74:ASP:HA	1:B:77:SER:OG	2.20	0.41
1:A:280:GLU:O	1:A:283:PRO:HD2	2.20	0.41
1:B:114:VAL:HG11	1:B:152:ALA:HA	2.03	0.41
1:A:185:MET:SD	1:B:53:ILE:HG13	2.61	0.41
1:B:231:LYS:O	1:B:239:PRO:HB3	2.20	0.41
1:B:211:ILE:HD12	1:B:263:MET:CB	2.47	0.40

There are no symmetry-related clashes.

## 5.3 Torsion angles

### 5.3.1 Protein backbone

In the following table, the Percentiles column shows the percent Ramachandran outliers of the chain as a percentile score with respect to all X-ray entries followed by that with respect to entries of similar resolution.

The Analysed column shows the number of residues for which the backbone conformation was analysed, and the total number of residues.

Mol	Chain	Analysed	Favoured	Allowed	Outliers	Percentiles	
1	A	309/335 (92%)	284 (92%)	24 (8%)	1 (0%)	46	84
1	B	311/335 (93%)	271 (87%)	32 (10%)	8 (3%)	7	33
All	All	620/670 (92%)	555 (90%)	56 (9%)	9 (2%)	13	50

All (9) Ramachandran outliers are listed below:

Mol	Chain	Res	Type
1	B	25	ARG
1	B	145	ASP

Continued on next page...

*Continued from previous page...*

Mol	Chain	Res	Type
1	B	199	ASN
1	B	27	THR
1	B	244	TYR
1	B	100	LYS
1	B	178	VAL
1	B	218	GLU
1	A	74	ASP

### 5.3.2 Protein sidechains ⓘ

In the following table, the Percentiles column shows the percent sidechain outliers of the chain as a percentile score with respect to all X-ray entries followed by that with respect to entries of similar resolution.

The Analysed column shows the number of residues for which the sidechain conformation was analysed, and the total number of residues.

Mol	Chain	Analysed	Rotameric	Outliers	Percentiles	
1	A	261/278 (94%)	236 (90%)	25 (10%)	10	38
1	B	262/278 (94%)	240 (92%)	22 (8%)	14	45
All	All	523/556 (94%)	476 (91%)	47 (9%)	12	41

All (47) residues with a non-rotameric sidechain are listed below:

Mol	Chain	Res	Type
1	A	7	ASP
1	A	8	THR
1	A	27	THR
1	A	77	SER
1	A	99	ASP
1	A	124	SER
1	A	127	ASP
1	A	144	THR
1	A	145	ASP
1	A	160	VAL
1	A	169	SER
1	A	182	ASN
1	A	199	ASN
1	A	204	LYS
1	A	207	SER
1	A	210	SER

*Continued on next page...*

*Continued from previous page...*

Mol	Chain	Res	Type
1	A	217	LYS
1	A	218	GLU
1	A	224	THR
1	A	230	LYS
1	A	265	PRO
1	A	279	TYR
1	A	282	ASN
1	A	300	GLU
1	A	325	THR
1	B	10	ILE
1	B	45	SER
1	B	84	VAL
1	B	91	THR
1	B	92	CYS
1	B	106	GLU
1	B	143	SER
1	B	146	GLU
1	B	151	ASP
1	B	197	ASP
1	B	199	ASN
1	B	207	SER
1	B	208	ILE
1	B	218	GLU
1	B	235	ASP
1	B	249	VAL
1	B	278	LEU
1	B	279	TYR
1	B	294	LEU
1	B	326	GLU
1	B	329	GLU
1	B	331	TYR

Some sidechains can be flipped to improve hydrogen bonding and reduce clashes. All (7) such sidechains are listed below:

Mol	Chain	Res	Type
1	A	32	GLN
1	A	199	ASN
1	A	282	ASN
1	B	182	ASN
1	B	199	ASN
1	B	282	ASN
1	B	334	HIS

### 5.3.3 RNA ⓘ

There are no RNA molecules in this entry.

## 5.4 Non-standard residues in protein, DNA, RNA chains ⓘ

There are no non-standard protein/DNA/RNA residues in this entry.

## 5.5 Carbohydrates ⓘ

There are no carbohydrates in this entry.

## 5.6 Ligand geometry ⓘ

Of 4 ligands modelled in this entry, 2 are monoatomic - leaving 2 for Mogul analysis.

In the following table, the Counts columns list the number of bonds (or angles) for which Mogul statistics could be retrieved, the number of bonds (or angles) that are observed in the model and the number of bonds (or angles) that are defined in the chemical component dictionary. The Link column lists molecule types, if any, to which the group is linked. The Z score for a bond length (or angle) is the number of standard deviations the observed value is removed from the expected value. A bond length (or angle) with  $|Z| > 2$  is considered an outlier worth inspection. RMSZ is the root-mean-square of all Z scores of the bond lengths (or angles).

Mol	Type	Chain	Res	Link	Bond lengths			Bond angles		
					Counts	RMSZ	$\# Z  > 2$	Counts	RMSZ	$\# Z  > 2$
3	AHM	A	336	2	19,19,19	0.72	0	27,29,29	0.90	1 (3%)
3	AHM	B	336	2	19,19,19	0.76	0	27,29,29	0.92	1 (3%)

In the following table, the Chirals column lists the number of chiral outliers, the number of chiral centers analysed, the number of these observed in the model and the number defined in the chemical component dictionary. Similar counts are reported in the Torsion and Rings columns. '-' means no outliers of that kind were identified.

Mol	Type	Chain	Res	Link	Chirals	Torsions	Rings
3	AHM	A	336	2	-	0/12/28/28	0/1/1/1
3	AHM	B	336	2	-	0/12/28/28	0/1/1/1

There are no bond length outliers.

All (2) bond angle outliers are listed below:

Mol	Chain	Res	Type	Atoms	Z	Observed( $^{\circ}$ )	Ideal( $^{\circ}$ )
3	A	336	AHM	O2P-P1-O1P	2.35	118.14	110.58
3	B	336	AHM	O2P-P1-O1P	2.51	118.67	110.58

There are no chirality outliers.

There are no torsion outliers.

There are no ring outliers.

2 monomers are involved in 7 short contacts:

Mol	Chain	Res	Type	Clashes	Symm-Clashes
3	A	336	AHM	5	0
3	B	336	AHM	2	0

## 5.7 Other polymers [i](#)

There are no such residues in this entry.

## 5.8 Polymer linkage issues [i](#)

There are no chain breaks in this entry.



## 6 Fit of model and data

### 6.1 Protein, DNA and RNA chains

EDS was not executed - this section will therefore be empty.

### 6.2 Non-standard residues in protein, DNA, RNA chains

EDS was not executed - this section will therefore be empty.

### 6.3 Carbohydrates

EDS was not executed - this section will therefore be empty.

### 6.4 Ligands

EDS was not executed - this section will therefore be empty.

### 6.5 Other polymers

EDS was not executed - this section will therefore be empty.