



Full wwPDB X-ray Structure Validation Report ⓘ

May 4, 2016 – 04:54 PM EDT

PDB ID : 5FI2
Title : Crystal structure of human GAC in complex with inhibitor UPGL_00009: 2-phenyl- {N}-[5-[[[(3 {R})-1-[5-(2-phenylethanoylamino)-1,3,4-thiadiazol- 2-yl]pyrrolidin-3-yl]amino]-1,3,4-thiadiazol-2-yl]ethanamide
Authors : Huang, Q.; Cerione, R.
Deposited on : 2015-12-22
Resolution : 2.50 Å(reported)

This is a Full wwPDB X-ray Structure Validation Report for a publicly released PDB entry.
We welcome your comments at validation@mail.wwpdb.org
A user guide is available at
<http://wwpdb.org/validation/2016/XrayValidationReportHelp>
with specific help available everywhere you see the ⓘ symbol.

The following versions of software and data (see [references ⓘ](#)) were used in the production of this report:

MolProbity : 4.02b-467
Mogul : 1.7.1 (RC1), CSD as537be (2016)
Xtriage (Phenix) : 1.9-1692
EDS : rb-20027457
Percentile statistics : 20151230.v01 (using entries in the PDB archive December 30th 2015)
Refmac : 5.8.0135
CCP4 : 6.5.0
Ideal geometry (proteins) : Engh & Huber (2001)
Ideal geometry (DNA, RNA) : Parkinson et al. (1996)
Validation Pipeline (wwPDB-VP) : rb-20027457

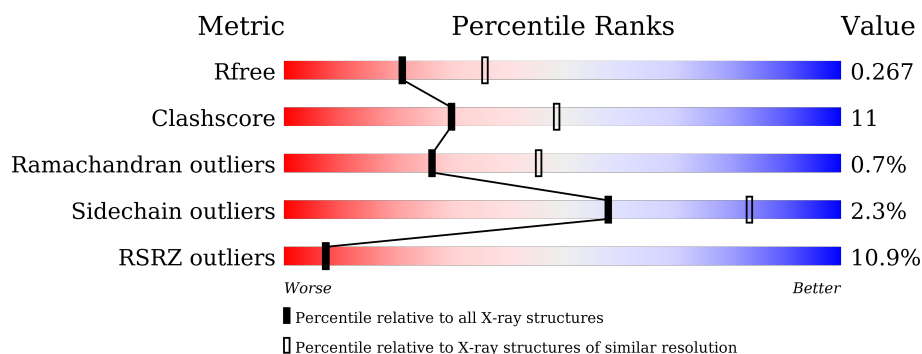
1 Overall quality at a glance

The following experimental techniques were used to determine the structure:

X-RAY DIFFRACTION

The reported resolution of this entry is 2.50 Å.

Percentile scores (ranging between 0-100) for global validation metrics of the entry are shown in the following graphic. The table shows the number of entries on which the scores are based.



Metric	Whole archive (#Entries)	Similar resolution (#Entries, resolution range(Å))
R_{free}	91344	3553 (2.50-2.50)
Clashscore	102246	4242 (2.50-2.50)
Ramachandran outliers	100387	4156 (2.50-2.50)
Sidechain outliers	100360	4158 (2.50-2.50)
RSRZ outliers	91569	3562 (2.50-2.50)

The table below summarises the geometric issues observed across the polymeric chains and their fit to the electron density. The red, orange, yellow and green segments on the lower bar indicate the fraction of residues that contain outliers for ≥ 3 , 2, 1 and 0 types of geometric quality criteria. A grey segment represents the fraction of residues that are not modelled. The numeric value for each fraction is indicated below the corresponding segment, with a dot representing fractions $\leq 5\%$. The upper red bar (where present) indicates the fraction of residues that have poor fit to the electron density. The numeric value is given above the bar.

Mol	Chain	Length	Quality of chain
1	A	539	<div> <div>7%</div> <div>60% 15% 24%</div> </div>
1	B	539	<div> <div>8%</div> <div>59% 15% 24%</div> </div>
1	C	539	<div> <div>9%</div> <div>62% 14% 24%</div> </div>
1	D	539	<div> <div>9%</div> <div>58% 17% 24%</div> </div>

2 Entry composition

There are 3 unique types of molecules in this entry. The entry contains 13548 atoms, of which 0 are hydrogens and 0 are deuteriums.

In the tables below, the ZeroOcc column contains the number of atoms modelled with zero occupancy, the AltConf column contains the number of residues with at least one atom in alternate conformation and the Trace column contains the number of residues modelled with at most 2 atoms.

- Molecule 1 is a protein called Glutaminase kidney isoform, mitochondrial.

Mol	Chain	Residues	Atoms					ZeroOcc	AltConf	Trace
1	A	410	Total	C	N	O	S	1	0	0
			3194	2036	540	590	28			
1	B	410	Total	C	N	O	S	1	0	0
			3194	2036	540	590	28			
1	C	410	Total	C	N	O	S	1	0	0
			3194	2036	540	590	28			
1	D	410	Total	C	N	O	S	1	0	0
			3194	2036	540	590	28			

There are 48 discrepancies between the modelled and reference sequences:

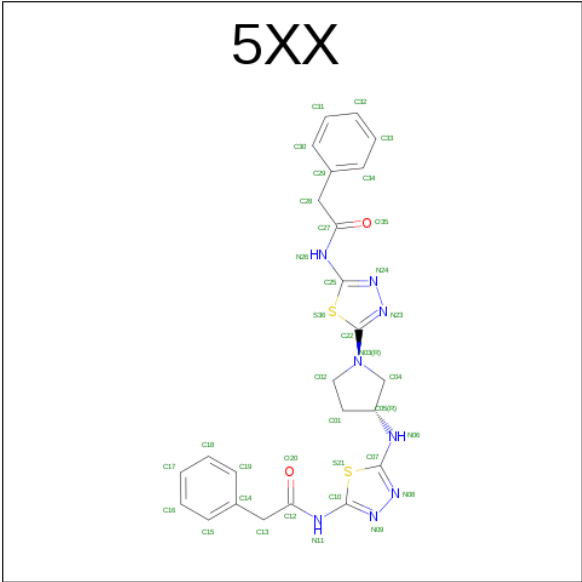
Chain	Residue	Modelled	Actual	Comment	Reference
A	59	MET	-	initiating methionine	UNP O94925
A	60	ARG	-	expression tag	UNP O94925
A	61	GLY	-	expression tag	UNP O94925
A	62	SER	-	expression tag	UNP O94925
A	63	HIS	-	expression tag	UNP O94925
A	64	HIS	-	expression tag	UNP O94925
A	65	HIS	-	expression tag	UNP O94925
A	66	HIS	-	expression tag	UNP O94925
A	67	HIS	-	expression tag	UNP O94925
A	68	HIS	-	expression tag	UNP O94925
A	69	GLY	-	expression tag	UNP O94925
A	70	SER	-	expression tag	UNP O94925
B	59	MET	-	initiating methionine	UNP O94925
B	60	ARG	-	expression tag	UNP O94925
B	61	GLY	-	expression tag	UNP O94925
B	62	SER	-	expression tag	UNP O94925
B	63	HIS	-	expression tag	UNP O94925
B	64	HIS	-	expression tag	UNP O94925
B	65	HIS	-	expression tag	UNP O94925
B	66	HIS	-	expression tag	UNP O94925
B	67	HIS	-	expression tag	UNP O94925

Continued on next page...

Continued from previous page...

Chain	Residue	Modelled	Actual	Comment	Reference
B	68	HIS	-	expression tag	UNP O94925
B	69	GLY	-	expression tag	UNP O94925
B	70	SER	-	expression tag	UNP O94925
C	59	MET	-	initiating methionine	UNP O94925
C	60	ARG	-	expression tag	UNP O94925
C	61	GLY	-	expression tag	UNP O94925
C	62	SER	-	expression tag	UNP O94925
C	63	HIS	-	expression tag	UNP O94925
C	64	HIS	-	expression tag	UNP O94925
C	65	HIS	-	expression tag	UNP O94925
C	66	HIS	-	expression tag	UNP O94925
C	67	HIS	-	expression tag	UNP O94925
C	68	HIS	-	expression tag	UNP O94925
C	69	GLY	-	expression tag	UNP O94925
C	70	SER	-	expression tag	UNP O94925
D	59	MET	-	initiating methionine	UNP O94925
D	60	ARG	-	expression tag	UNP O94925
D	61	GLY	-	expression tag	UNP O94925
D	62	SER	-	expression tag	UNP O94925
D	63	HIS	-	expression tag	UNP O94925
D	64	HIS	-	expression tag	UNP O94925
D	65	HIS	-	expression tag	UNP O94925
D	66	HIS	-	expression tag	UNP O94925
D	67	HIS	-	expression tag	UNP O94925
D	68	HIS	-	expression tag	UNP O94925
D	69	GLY	-	expression tag	UNP O94925
D	70	SER	-	expression tag	UNP O94925

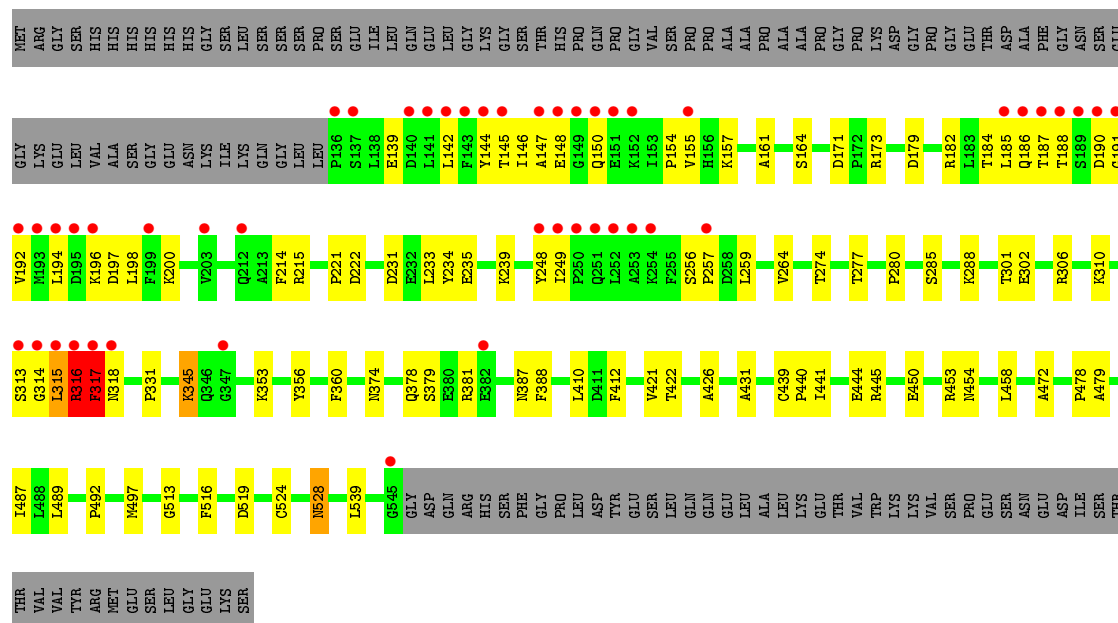
- Molecule 2 is 2-phenyl- {N}-[5-[[[(3 {R})-1-[5-(2-phenylethanoylamino)-1,3,4-thiadiazol-2-yl]pyrrolidin-3-yl]amino]-1,3,4-thiadiazol-2-yl]ethanamide (three-letter code: 5XX) (formula: C₂₄H₂₄N₈O₂S₂).



Mol	Chain	Residues	Atoms					ZeroOcc	AltConf
2	A	1	Total	C	N	O	S	0	0
			36	24	8	2	2		
2	D	1	Total	C	N	O	S	0	0
			36	24	8	2	2		

- Molecule 3 is water.

Mol	Chain	Residues	Atoms		ZeroOcc	AltConf
3	A	180	Total	O	0	0
			180	180		
3	B	167	Total	O	0	0
			167	167		
3	C	177	Total	O	0	0
			177	177		
3	D	176	Total	O	0	0
			176	176		



4 Data and refinement statistics

Property	Value	Source
Space group	P 21 21 21	Depositor
Cell constants a, b, c, α , β , γ	98.05Å 138.62Å 176.31Å 90.00° 90.00° 90.00°	Depositor
Resolution (Å)	44.83 – 2.50 47.63 – 2.30	Depositor EDS
% Data completeness (in resolution range)	99.6 (44.83-2.50) 99.8 (47.63-2.30)	Depositor EDS
R_{merge}	0.12	Depositor
R_{sym}	(Not available)	Depositor
$\langle I/\sigma(I) \rangle$ ¹	2.25 (at 2.29Å)	Xtriage
Refinement program	PHENIX (phenix.refine: 1.8.4_1496)	Depositor
R, R_{free}	0.225 , 0.265 0.227 , 0.267	Depositor DCC
R_{free} test set	1559 reflections (1.87%)	DCC
Wilson B-factor (Å ²)	29.9	Xtriage
Anisotropy	0.546	Xtriage
Bulk solvent k_{sol} (e/Å ³), B_{sol} (Å ²)	0.35 , 40.5	EDS
L-test for twinning ²	$\langle L \rangle = 0.49$, $\langle L^2 \rangle = 0.32$	Xtriage
Estimated twinning fraction	No twinning to report.	Xtriage
F_o, F_c correlation	0.94	EDS
Total number of atoms	13548	wwPDB-VP
Average B, all atoms (Å ²)	28.0	wwPDB-VP

Xtriage's analysis on translational NCS is as follows: *The analyses of the Patterson function reveals a significant off-origin peak that is 59.57 % of the origin peak, indicating pseudo translational symmetry. The chance of finding a peak of this or larger height randomly in a structure without pseudo translational symmetry is equal to 1.7307e-05. The detected translational NCS is most likely also responsible for the elevated intensity ratio.*

¹ Intensities estimated from amplitudes.

² Theoretical values of $\langle |L| \rangle$, $\langle L^2 \rangle$ for acentric reflections are 0.5, 0.375 respectively for untwinned datasets, and 0.333, 0.2 for perfectly twinned datasets.

5 Model quality

5.1 Standard geometry

Bond lengths and bond angles in the following residue types are not validated in this section: 5XX

The Z score for a bond length (or angle) is the number of standard deviations the observed value is removed from the expected value. A bond length (or angle) with $|Z| > 5$ is considered an outlier worth inspection. RMSZ is the root-mean-square of all Z scores of the bond lengths (or angles).

Mol	Chain	Bond lengths		Bond angles	
		RMSZ	$\# Z > 5$	RMSZ	$\# Z > 5$
1	A	0.50	0/3266	0.61	2/4408 (0.0%)
1	B	0.51	0/3266	0.59	2/4408 (0.0%)
1	C	0.51	0/3266	0.60	0/4408
1	D	0.54	2/3266 (0.1%)	0.61	1/4408 (0.0%)
All	All	0.52	2/13064 (0.0%)	0.60	5/17632 (0.0%)

Chiral center outliers are detected by calculating the chiral volume of a chiral center and verifying if the center is modelled as a planar moiety or with the opposite hand. A planarity outlier is detected by checking planarity of atoms in a peptide group, atoms in a mainchain group or atoms of a sidechain that are expected to be planar.

Mol	Chain	#Chirality outliers	#Planarity outliers
1	B	0	1
1	D	0	2
All	All	0	3

All (2) bond length outliers are listed below:

Mol	Chain	Res	Type	Atoms	Z	Observed(Å)	Ideal(Å)
1	D	317	PHE	CD1-CE1	-7.38	1.24	1.39
1	D	317	PHE	CD2-CE2	-5.78	1.27	1.39

All (5) bond angle outliers are listed below:

Mol	Chain	Res	Type	Atoms	Z	Observed(°)	Ideal(°)
1	B	251	GLN	CA-CB-CG	7.08	128.97	113.40
1	A	193	MET	CG-SD-CE	5.87	109.58	100.20
1	D	315	LEU	CA-CB-CG	5.47	127.88	115.30
1	A	193	MET	CB-CG-SD	5.36	128.49	112.40
1	B	316	ARG	NE-CZ-NH1	-5.09	117.75	120.30

There are no chirality outliers.

All (3) planarity outliers are listed below:

Mol	Chain	Res	Type	Group
1	B	250	PRO	Peptide
1	D	316	ARG	Peptide
1	D	317	PHE	Peptide

5.2 Too-close contacts

In the following table, the Non-H and H(model) columns list the number of non-hydrogen atoms and hydrogen atoms in the chain respectively. The H(added) column lists the number of hydrogen atoms added and optimized by MolProbity. The Clashes column lists the number of clashes within the asymmetric unit, whereas Symm-Clashes lists symmetry related clashes.

Mol	Chain	Non-H	H(model)	H(added)	Clashes	Symm-Clashes
1	A	3194	0	3167	80	0
1	B	3194	0	3167	75	0
1	C	3194	0	3167	56	0
1	D	3194	0	3167	91	0
2	A	36	0	0	3	0
2	D	36	0	0	0	1
3	A	180	0	0	18	1
3	B	167	0	0	19	4
3	C	177	0	0	6	0
3	D	176	0	0	13	2
All	All	13548	0	12668	284	4

The all-atom clashscore is defined as the number of clashes found per 1000 atoms (including hydrogen atoms). The all-atom clashscore for this structure is 11.

All (284) close contacts within the same asymmetric unit are listed below, sorted by their clash magnitude.

Atom-1	Atom-2	Interatomic distance (Å)	Clash overlap (Å)
1:A:530:ASP:O	3:A:701:HOH:O	1.84	0.95
1:C:318:ASN:O	3:C:602:HOH:O	1.87	0.93
1:B:364:MET:SD	3:B:748:HOH:O	2.27	0.92
1:B:271:ARG:O	3:B:601:HOH:O	1.86	0.92
1:B:252:LEU:HD21	3:B:754:HOH:O	1.71	0.91
1:C:249:ILE:HD11	1:C:252:LEU:HG	1.51	0.90
1:A:528:ASN:ND2	1:D:528:ASN:OD1	2.06	0.88
1:B:251:GLN:HE21	1:B:375:ALA:HB1	1.38	0.87

Continued on next page...

Continued from previous page...

Atom-1	Atom-2	Interatomic distance (Å)	Clash overlap (Å)
1:A:364:MET:SD	3:A:847:HOH:O	2.34	0.85
1:D:239:LYS:NZ	3:D:702:HOH:O	2.10	0.82
1:B:433:LEU:O	3:B:602:HOH:O	1.97	0.81
1:A:433:LEU:O	3:A:702:HOH:O	1.98	0.80
1:A:154:PRO:HD2	1:A:157:LYS:HD2	1.62	0.80
1:D:234:TYR:CD2	1:D:274:THR:HG23	2.15	0.80
1:C:167:LEU:O	3:C:603:HOH:O	1.97	0.79
1:A:316:ARG:HH22	1:A:319:LYS:HD2	1.47	0.79
1:B:313:SER:O	1:C:316:ARG:NH2	2.16	0.78
1:A:234:TYR:CD2	1:A:274:THR:HG23	2.19	0.78
1:A:247:ASP:CA	1:A:252:LEU:HD11	2.08	0.76
1:B:249:ILE:HD13	1:B:379:SER:OG	1.84	0.75
1:D:179:ASP:OD1	1:D:182:ARG:NH2	2.20	0.74
1:B:530:ASP:O	3:B:604:HOH:O	2.06	0.72
1:A:334:ASN:OD1	3:A:703:HOH:O	2.07	0.72
1:A:424:GLU:OE1	3:A:704:HOH:O	2.08	0.71
1:D:142:LEU:O	1:D:145:THR:OG1	2.08	0.71
1:A:362:ASN:OD1	3:A:705:HOH:O	2.08	0.71
1:D:221:PRO:O	3:D:701:HOH:O	2.08	0.71
1:D:187:THR:HG23	1:D:188:THR:HG23	1.70	0.70
1:A:246:ALA:CB	1:A:252:LEU:HD13	2.21	0.70
1:A:247:ASP:HA	1:A:252:LEU:HD11	1.74	0.70
1:A:152:LYS:HE3	1:A:193:MET:HE2	1.75	0.69
1:B:146:ILE:O	1:B:157:LYS:NZ	2.22	0.68
1:D:285:SER:OG	1:D:288:LYS:NZ	2.26	0.68
1:C:144:TYR:OH	1:C:196:LYS:NZ	2.24	0.68
1:B:234:TYR:CD2	1:B:274:THR:HG23	2.28	0.68
1:D:144:TYR:OH	1:D:196:LYS:NZ	2.22	0.68
1:B:526:PHE:O	3:B:605:HOH:O	2.11	0.68
1:C:234:TYR:CD2	1:C:274:THR:HG23	2.29	0.67
1:A:374:ASN:OD1	3:A:707:HOH:O	2.11	0.67
1:B:252:LEU:CG	3:B:754:HOH:O	2.40	0.67
1:D:197:ASP:O	3:D:704:HOH:O	2.12	0.67
1:D:519:ASP:OD2	3:D:703:HOH:O	2.12	0.67
1:A:530:ASP:O	3:A:708:HOH:O	2.11	0.67
1:B:252:LEU:CD2	3:B:754:HOH:O	2.34	0.66
1:A:315:LEU:C	1:A:318:ASN:HD21	2.00	0.65
1:C:150:GLN:OE1	1:C:151:GLU:N	2.30	0.65
1:B:321:PHE:O	3:B:607:HOH:O	2.14	0.65
1:B:318:ASN:HD21	1:B:333:VAL:HG11	1.61	0.64
1:B:316:ARG:HD3	1:B:466:ASP:OD1	1.97	0.64

Continued on next page...

Continued from previous page...

Atom-1	Atom-2	Interatomic distance (Å)	Clash overlap (Å)
1:C:512:LYS:NZ	3:C:601:HOH:O	1.85	0.64
1:C:233:LEU:HD22	1:C:519:ASP:HB3	1.79	0.64
1:D:164:SER:O	3:D:705:HOH:O	2.14	0.64
1:A:246:ALA:HB3	1:A:252:LEU:HD13	1.78	0.64
1:D:301:THR:OG1	1:D:454:ASN:ND2	2.29	0.63
1:D:148:GLU:OE2	1:D:157:LYS:NZ	2.21	0.63
1:D:444:GLU:HB2	3:D:708:HOH:O	1.96	0.63
1:D:154:PRO:HD2	1:D:157:LYS:HD3	1.79	0.63
1:B:507:MET:O	3:B:608:HOH:O	2.16	0.63
1:D:313:SER:C	1:D:317:PHE:CZ	2.72	0.63
1:C:314:GLY:C	1:C:316:ARG:H	2.00	0.62
1:B:487:ILE:HD12	1:B:513:GLY:HA3	1.82	0.62
1:D:316:ARG:O	1:D:318:ASN:N	2.32	0.61
1:A:215:ARG:NH1	3:A:718:HOH:O	2.33	0.61
1:C:306:ARG:HH12	1:D:257:PRO:HB2	1.67	0.60
1:B:315:LEU:O	1:B:316:ARG:HB2	2.00	0.60
1:D:155:VAL:HG21	1:D:185:LEU:HD11	1.83	0.60
1:D:302:GLU:OE2	1:D:306:ARG:NH2	2.35	0.59
1:A:317:PHE:CE2	1:D:317:PHE:HB3	2.37	0.59
1:B:233:LEU:HD22	1:B:519:ASP:HB3	1.82	0.59
1:D:234:TYR:CD2	1:D:274:THR:CG2	2.85	0.59
1:B:314:GLY:O	1:B:316:ARG:N	2.35	0.58
1:D:450:GLU:OE1	3:D:706:HOH:O	2.16	0.58
1:B:374:ASN:OD1	3:B:609:HOH:O	2.17	0.58
1:D:316:ARG:HB2	1:D:317:PHE:CD2	2.37	0.58
1:B:528:ASN:OD1	1:C:528:ASN:OD1	2.21	0.57
1:D:222:ASP:O	3:D:707:HOH:O	2.17	0.57
1:A:247:ASP:HA	1:A:252:LEU:CD1	2.33	0.57
1:B:470:GLN:NE2	3:B:617:HOH:O	2.33	0.56
1:C:250:PRO:HD2	1:C:379:SER:HB2	1.87	0.56
1:A:472:ALA:HA	3:A:762:HOH:O	2.04	0.56
1:C:248:TYR:OH	1:C:380:GLU:OE2	2.15	0.56
1:A:233:LEU:HD22	1:A:519:ASP:HB3	1.88	0.55
1:B:466:ASP:N	1:B:466:ASP:OD1	2.39	0.55
1:D:184:THR:O	1:D:187:THR:HG22	2.06	0.55
1:A:251:GLN:O	1:A:254:LYS:HE2	2.07	0.55
1:D:314:GLY:CA	1:D:317:PHE:HZ	2.19	0.55
1:A:533:ARG:NH1	3:A:725:HOH:O	2.40	0.55
1:B:137:SER:OG	1:B:140:ASP:OD2	2.24	0.54
1:D:445:ARG:NH2	3:D:714:HOH:O	2.39	0.54
1:B:244:LYS:NZ	3:B:628:HOH:O	2.40	0.54

Continued on next page...

Continued from previous page...

Atom-1	Atom-2	Interatomic distance (Å)	Clash overlap (Å)
1:D:431:ALA:HB1	1:D:440:PRO:HG2	1.90	0.54
1:A:146:ILE:O	1:A:157:LYS:NZ	2.32	0.54
1:D:331:PRO:HD2	1:D:458:LEU:HD13	1.90	0.54
1:A:316:ARG:NH2	1:A:319:LYS:HD2	2.20	0.53
1:D:139:GLU:N	1:D:139:GLU:OE1	2.35	0.53
1:A:317:PHE:CE2	1:D:317:PHE:HD2	2.26	0.53
1:B:251:GLN:NE2	1:B:375:ALA:HB1	2.17	0.53
1:A:152:LYS:HG3	1:A:193:MET:CB	2.39	0.53
1:A:244:LYS:NZ	3:A:713:HOH:O	2.25	0.53
1:D:497:MET:HE1	1:D:516:PHE:CE1	2.44	0.53
1:B:252:LEU:HG	3:B:754:HOH:O	2.08	0.52
1:A:234:TYR:CD2	1:A:274:THR:CG2	2.91	0.52
1:B:383:SER:OG	1:B:383:SER:O	2.26	0.52
1:B:194:LEU:HA	1:B:198:LEU:HD23	1.91	0.52
1:C:249:ILE:HD12	1:C:252:LEU:H	1.74	0.52
1:A:138:LEU:O	1:A:142:LEU:HG	2.10	0.52
1:D:233:LEU:HD22	1:D:519:ASP:HB3	1.91	0.52
1:D:313:SER:HB3	1:D:317:PHE:CE1	2.44	0.52
1:A:386:ARG:NH2	3:A:728:HOH:O	2.42	0.52
1:A:142:LEU:O	1:A:146:ILE:HD12	2.10	0.52
1:B:478:PRO:HD2	1:B:490:VAL:O	2.09	0.51
1:B:466:ASP:HB2	1:B:507:MET:SD	2.50	0.51
1:D:445:ARG:NE	3:D:714:HOH:O	2.41	0.51
1:A:152:LYS:HG3	1:A:193:MET:HB3	1.92	0.51
1:A:317:PHE:HE2	1:D:317:PHE:HB3	1.76	0.51
1:C:194:LEU:HD23	1:C:198:LEU:HG	1.93	0.51
1:A:223:PHE:O	1:A:227:THR:HG23	2.11	0.51
1:A:150:GLN:N	1:A:150:GLN:OE1	2.44	0.51
1:A:359:GLN:OE1	3:A:710:HOH:O	2.19	0.51
1:B:140:ASP:OD1	1:B:196:LYS:HE2	2.11	0.51
1:C:216:ARG:HH11	1:C:216:ARG:HG2	1.76	0.51
1:B:316:ARG:HD3	1:B:466:ASP:CG	2.31	0.50
1:C:382:GLU:O	3:C:604:HOH:O	2.18	0.50
1:C:497:MET:HE1	1:C:516:PHE:CE1	2.47	0.50
1:D:313:SER:O	1:D:317:PHE:CZ	2.65	0.50
1:D:144:TYR:HA	1:D:147:ALA:HB3	1.94	0.50
1:B:318:ASN:ND2	1:B:333:VAL:HG11	2.26	0.50
1:A:252:LEU:HD12	1:A:253:ALA:N	2.27	0.49
1:B:249:ILE:O	1:B:251:GLN:N	2.45	0.49
1:A:323:ASN:HA	1:D:316:ARG:HH21	1.77	0.49
1:D:249:ILE:HB	1:D:379:SER:HB3	1.94	0.49

Continued on next page...

Continued from previous page...

Atom-1	Atom-2	Interatomic distance (Å)	Clash overlap (Å)
1:A:331:PRO:HD2	1:A:458:LEU:HD13	1.93	0.49
1:C:306:ARG:NH1	1:D:257:PRO:HB2	2.27	0.49
1:B:434:ALA:HB2	1:B:490:VAL:HG13	1.94	0.49
1:C:184:THR:O	1:C:187:THR:OG1	2.30	0.49
1:C:188:THR:HG22	1:C:190:ASP:H	1.77	0.49
1:B:252:LEU:HD11	3:B:754:HOH:O	2.12	0.49
3:A:859:HOH:O	1:D:492:PRO:HB3	2.13	0.49
1:C:435:ASN:HA	3:C:628:HOH:O	2.12	0.49
1:A:171:ASP:OD1	1:A:173:ARG:HD3	2.13	0.48
1:D:314:GLY:C	1:D:317:PHE:HZ	2.16	0.48
1:D:231:ASP:O	1:D:235:GLU:HG2	2.13	0.48
1:A:348:VAL:HG23	1:A:353:LYS:HG3	1.96	0.48
1:C:257:PRO:HB3	1:C:503:PRO:HG3	1.95	0.48
1:B:223:PHE:O	1:B:227:THR:HG23	2.13	0.48
1:C:249:ILE:HD12	1:C:251:GLN:H	1.77	0.48
1:A:188:THR:O	1:A:188:THR:OG1	2.18	0.48
1:A:252:LEU:C	1:A:252:LEU:HD12	2.34	0.48
1:A:529:TYR:CZ	1:D:478:PRO:HG3	2.49	0.48
1:A:317:PHE:HE2	1:D:317:PHE:HD2	1.62	0.48
1:A:487:ILE:HD12	1:A:513:GLY:HA3	1.96	0.48
1:C:190:ASP:O	1:C:192:VAL:HG12	2.14	0.48
1:D:472:ALA:HA	3:D:752:HOH:O	2.13	0.48
1:A:317:PHE:HE2	1:D:317:PHE:CD2	2.31	0.48
1:C:378:GLN:O	1:C:381:ARG:HG2	2.13	0.47
1:B:169:THR:OG1	1:B:178:MET:SD	2.72	0.47
1:D:388:PHE:HA	1:D:410:LEU:HD11	1.95	0.47
1:B:139:GLU:HG3	1:B:207:ILE:HD13	1.96	0.47
1:B:191:GLY:HA3	1:B:192:VAL:HA	1.66	0.47
1:B:342:SER:HA	1:B:409:ILE:HD12	1.95	0.47
1:D:161:ALA:HB1	1:D:214:PHE:HE1	1.80	0.47
1:D:487:ILE:HD12	1:D:513:GLY:HA3	1.96	0.47
1:B:161:ALA:HB1	1:B:214:PHE:HE1	1.78	0.47
1:B:466:ASP:CG	3:B:608:HOH:O	2.53	0.47
1:B:317:PHE:HZ	1:C:317:PHE:CD2	2.33	0.47
1:A:216:ARG:HD3	1:A:544:GLU:OE2	2.16	0.46
1:D:142:LEU:O	1:D:146:ILE:HD12	2.15	0.46
1:B:217:LYS:HE3	1:B:217:LYS:HB3	1.58	0.46
1:C:333:VAL:HG23	1:C:336:GLY:H	1.80	0.46
1:D:188:THR:HB	1:D:190:ASP:HB2	1.97	0.46
1:D:378:GLN:O	1:D:381:ARG:HG2	2.14	0.46
1:C:143:PHE:CG	1:C:196:LYS:HG3	2.50	0.46

Continued on next page...

Continued from previous page...

Atom-1	Atom-2	Interatomic distance (Å)	Clash overlap (Å)
1:B:478:PRO:HG3	1:C:529:TYR:CE1	2.51	0.46
1:A:435:ASN:HA	3:A:730:HOH:O	2.16	0.46
1:D:313:SER:O	1:D:317:PHE:CE2	2.69	0.46
1:D:317:PHE:C	1:D:317:PHE:CD1	2.89	0.46
1:A:191:GLY:HA3	1:A:192:VAL:HA	1.55	0.46
1:C:452:VAL:O	1:C:456:LEU:HG	2.15	0.46
1:A:315:LEU:HD23	1:A:315:LEU:O	2.16	0.45
1:C:288:LYS:HE3	1:C:337:ALA:CB	2.45	0.45
1:D:256:SER:HB3	1:D:259:LEU:HG	1.98	0.45
1:A:139:GLU:HG3	1:A:207:ILE:HD13	1.97	0.45
1:D:194:LEU:HD23	1:D:198:LEU:HG	1.98	0.45
1:D:345:LYS:HE2	1:D:356:TYR:CE1	2.52	0.45
1:C:216:ARG:HG2	1:C:216:ARG:NH1	2.31	0.45
1:B:243:GLY:HA3	1:B:511:VAL:HG21	1.98	0.45
1:B:533:ARG:NH1	3:B:612:HOH:O	2.24	0.45
1:A:329:HIS:ND1	1:A:329:HIS:N	2.65	0.45
1:B:257:PRO:HB3	1:B:503:PRO:HG3	1.98	0.45
1:A:357:VAL:O	1:A:361:LEU:HG	2.17	0.45
1:B:345:LYS:HD2	1:B:345:LYS:HA	1.87	0.44
2:A:601:5XX:C28	1:D:316:ARG:HH22	2.30	0.44
1:B:171:ASP:OD1	1:B:173:ARG:HD3	2.17	0.44
1:B:255:PHE:CE1	1:B:500:TRP:HZ2	2.35	0.44
1:D:313:SER:CB	1:D:317:PHE:CE1	3.01	0.44
1:A:147:ALA:C	1:A:149:GLY:H	2.21	0.44
1:A:317:PHE:CZ	1:D:317:PHE:HB3	2.53	0.44
1:D:374:ASN:O	1:D:378:GLN:HG2	2.17	0.44
1:D:421:VAL:HG21	1:D:426:ALA:HB2	2.00	0.44
1:A:140:ASP:O	1:A:143:PHE:HB3	2.18	0.44
1:A:203:VAL:HG23	1:A:207:ILE:HD13	1.99	0.44
1:C:152:LYS:HE2	1:C:193:MET:HB2	2.00	0.44
1:C:140:ASP:OD1	1:C:196:LYS:HG2	2.18	0.44
1:A:313:SER:CB	1:A:329:HIS:CD2	3.01	0.43
1:A:447:LEU:O	3:A:711:HOH:O	2.21	0.43
1:B:528:ASN:ND2	1:C:529:TYR:OH	2.51	0.43
1:C:191:GLY:HA3	1:C:192:VAL:HA	1.60	0.43
1:D:191:GLY:HA3	1:D:192:VAL:HA	1.52	0.43
1:D:345:LYS:HB3	1:D:353:LYS:HG2	2.00	0.43
1:B:331:PRO:HD2	1:B:458:LEU:HD13	2.00	0.43
1:B:182:ARG:O	3:B:610:HOH:O	2.21	0.43
1:C:161:ALA:HB1	1:C:214:PHE:HE1	1.84	0.43
1:D:234:TYR:CE2	1:D:274:THR:HG23	2.52	0.43

Continued on next page...

Continued from previous page...

Atom-1	Atom-2	Interatomic distance (Å)	Clash overlap (Å)
1:C:317:PHE:CD2	1:C:320:LEU:HD12	2.54	0.43
1:C:173:ARG:HD2	1:C:441:ILE:C	2.38	0.43
1:C:246:ALA:HB2	1:C:483:VAL:HG22	2.01	0.43
1:A:319:LYS:HZ2	2:A:601:5XX:C12	2.32	0.43
1:B:409:ILE:HA	1:B:409:ILE:HD13	1.91	0.43
1:B:431:ALA:HB1	1:B:440:PRO:HG2	2.00	0.43
1:D:264:VAL:HG22	1:D:497:MET:HG2	2.01	0.43
1:D:524:CYS:HA	1:D:539:LEU:O	2.19	0.43
1:D:233:LEU:CD2	1:D:519:ASP:HB3	2.49	0.43
1:B:251:GLN:HG3	1:B:254:LYS:NZ	2.33	0.43
1:A:315:LEU:O	1:A:318:ASN:ND2	2.50	0.43
1:A:317:PHE:HD1	1:A:320:LEU:HD12	1.83	0.43
1:C:487:ILE:HD12	1:C:513:GLY:HA3	1.99	0.43
1:B:159:ILE:O	1:B:163:LYS:HG3	2.18	0.43
1:C:314:GLY:C	1:C:316:ARG:N	2.70	0.43
1:A:146:ILE:H	1:A:146:ILE:HD12	1.84	0.42
1:B:252:LEU:CD1	3:B:754:HOH:O	2.67	0.42
1:D:139:GLU:HG2	1:D:200:LYS:HG3	2.01	0.42
1:C:194:LEU:HA	1:C:198:LEU:HD23	2.01	0.42
1:D:173:ARG:HD2	1:D:441:ILE:C	2.38	0.42
1:A:320:LEU:HD13	2:A:601:5XX:C29	2.50	0.42
1:B:147:ALA:C	1:B:149:GLY:H	2.21	0.42
1:B:345:LYS:HB3	1:B:353:LYS:HG2	2.01	0.42
1:C:168:ARG:NE	3:C:613:HOH:O	2.32	0.42
1:A:313:SER:HA	1:A:329:HIS:HD2	1.85	0.42
1:B:458:LEU:HA	1:B:458:LEU:HD23	1.82	0.42
1:D:497:MET:HE3	1:D:497:MET:HB3	1.68	0.42
1:D:171:ASP:OD1	1:D:173:ARG:HD3	2.18	0.42
1:D:234:TYR:CG	1:D:274:THR:CG2	3.02	0.42
1:D:353:LYS:HB3	1:D:412:PHE:CZ	2.55	0.42
1:B:260:TRP:CE3	1:B:501:SER:HB2	2.54	0.42
1:C:234:TYR:CD2	1:C:274:THR:CG2	3.01	0.42
1:A:180:MET:HG2	1:A:202:CYS:HA	2.01	0.42
1:C:264:VAL:HG22	1:C:497:MET:HG2	2.02	0.42
1:D:280:PRO:HA	1:D:421:VAL:O	2.19	0.42
1:A:431:ALA:HB1	1:A:440:PRO:HG2	2.02	0.41
1:A:445:ARG:HD3	3:A:706:HOH:O	2.18	0.41
1:B:138:LEU:HA	1:B:138:LEU:HD23	1.88	0.41
1:D:215:ARG:HD2	3:D:772:HOH:O	2.18	0.41
1:D:147:ALA:O	1:D:150:GLN:HG2	2.20	0.41
1:C:247:ASP:OD1	1:C:248:TYR:N	2.53	0.41

Continued on next page...

Continued from previous page...

Atom-1	Atom-2	Interatomic distance (Å)	Clash overlap (Å)
1:C:302:GLU:O	1:C:306:ARG:HG3	2.21	0.41
1:B:316:ARG:NE	1:B:466:ASP:HB3	2.35	0.41
1:A:529:TYR:CE1	1:D:478:PRO:HG3	2.55	0.41
1:A:544:GLU:HB3	1:A:545:GLY:H	1.61	0.41
1:A:260:TRP:CE3	1:A:501:SER:HB2	2.56	0.41
1:A:360:PHE:CE1	1:A:446:VAL:HG12	2.54	0.41
1:C:497:MET:HB3	1:C:497:MET:HE3	1.70	0.41
1:A:527:HIS:CG	1:D:453:ARG:HD2	2.56	0.41
1:D:479:ALA:HB2	1:D:489:LEU:HD12	2.01	0.41
1:A:161:ALA:HB1	1:A:214:PHE:HE1	1.86	0.41
1:B:138:LEU:O	1:B:142:LEU:HG	2.21	0.41
1:C:363:LYS:HD3	1:C:444:GLU:OE2	2.20	0.41
1:D:277:THR:O	1:D:422:THR:HB	2.20	0.41
1:B:152:LYS:HB3	1:B:193:MET:HB3	2.03	0.41
1:D:248:TYR:CD2	1:D:249:ILE:HG23	2.56	0.41
1:D:439:CYS:HA	1:D:440:PRO:HD3	1.89	0.41
1:B:277:THR:HA	1:B:423:CYS:HB2	2.03	0.41
1:A:356:TYR:O	1:A:359:GLN:HG2	2.21	0.40
1:B:439:CYS:HA	1:B:440:PRO:HD3	1.88	0.40
1:B:497:MET:HE3	1:B:497:MET:HB3	1.90	0.40
1:C:138:LEU:HD12	1:C:138:LEU:H	1.84	0.40
1:D:314:GLY:HA2	3:D:864:HOH:O	2.20	0.40
1:A:479:ALA:HB2	1:A:489:LEU:HD12	2.01	0.40
1:B:299:LEU:HD13	1:B:303:TYR:CE2	2.57	0.40
1:C:227:THR:HB	1:C:272:HIS:CE1	2.56	0.40
1:D:196:LYS:HE2	1:D:196:LYS:HB2	1.82	0.40
1:C:223:PHE:O	1:C:227:THR:HG23	2.21	0.40
1:C:182:ARG:O	1:C:186:GLN:HG2	2.22	0.40
1:D:182:ARG:O	1:D:186:GLN:HG2	2.21	0.40
1:D:314:GLY:N	1:D:317:PHE:HZ	2.20	0.40

All (4) symmetry-related close contacts are listed below. The label for Atom-2 includes the symmetry operator and encoded unit-cell translations to be applied.

Atom-1	Atom-2	Interatomic distance (Å)	Clash overlap (Å)
3:A:854:HOH:O	3:B:744:HOH:O[1_455]	1.84	0.36
3:B:738:HOH:O	3:D:849:HOH:O[3_847]	2.01	0.19
2:D:601:5XX:S36	3:B:603:HOH:O[4_497]	2.11	0.09
3:B:681:HOH:O	3:D:735:HOH:O[3_847]	2.12	0.08

5.3 Torsion angles

5.3.1 Protein backbone

In the following table, the Percentiles column shows the percent Ramachandran outliers of the chain as a percentile score with respect to all X-ray entries followed by that with respect to entries of similar resolution.

The Analysed column shows the number of residues for which the backbone conformation was analysed, and the total number of residues.

Mol	Chain	Analysed	Favoured	Allowed	Outliers	Percentiles	
1	A	408/539 (76%)	388 (95%)	20 (5%)	0	100	100
1	B	408/539 (76%)	388 (95%)	13 (3%)	7 (2%)	11	19
1	C	408/539 (76%)	387 (95%)	19 (5%)	2 (0%)	34	55
1	D	408/539 (76%)	389 (95%)	17 (4%)	2 (0%)	34	55
All	All	1632/2156 (76%)	1552 (95%)	69 (4%)	11 (1%)	26	46

All (11) Ramachandran outliers are listed below:

Mol	Chain	Res	Type
1	B	315	LEU
1	B	316	ARG
1	C	248	TYR
1	D	316	ARG
1	D	317	PHE
1	B	190	ASP
1	B	250	PRO
1	B	246	ALA
1	B	249	ILE
1	B	191	GLY
1	C	544	GLU

5.3.2 Protein sidechains

In the following table, the Percentiles column shows the percent sidechain outliers of the chain as a percentile score with respect to all X-ray entries followed by that with respect to entries of similar resolution.

The Analysed column shows the number of residues for which the sidechain conformation was analysed, and the total number of residues.

Mol	Chain	Analysed	Rotameric	Outliers	Percentiles	
1	A	353/462 (76%)	342 (97%)	11 (3%)	47	75
1	B	353/462 (76%)	343 (97%)	10 (3%)	51	78
1	C	353/462 (76%)	347 (98%)	6 (2%)	68	89
1	D	353/462 (76%)	347 (98%)	6 (2%)	68	89
All	All	1412/1848 (76%)	1379 (98%)	33 (2%)	58	83

All (33) residues with a non-rotameric sidechain are listed below:

Mol	Chain	Res	Type
1	A	152	LYS
1	A	190	ASP
1	A	224	MET
1	A	240	GLN
1	A	241	SER
1	A	287	VAL
1	A	319	LYS
1	A	329	HIS
1	A	359	GLN
1	A	360	PHE
1	A	528	ASN
1	B	216	ARG
1	B	251	GLN
1	B	318	ASN
1	B	360	PHE
1	B	379	SER
1	B	383	SER
1	B	466	ASP
1	B	506	LYS
1	B	528	ASN
1	B	544	GLU
1	C	151	GLU
1	C	183	LEU
1	C	215	ARG
1	C	258	ASP
1	C	360	PHE
1	C	528	ASN
1	D	310	LYS
1	D	315	LEU
1	D	345	LYS
1	D	360	PHE
1	D	387	ASN
1	D	528	ASN

Some sidechains can be flipped to improve hydrogen bonding and reduce clashes. All (9) such sidechains are listed below:

Mol	Chain	Res	Type
1	A	318	ASN
1	A	329	HIS
1	A	528	ASN
1	B	251	GLN
1	B	318	ASN
1	B	528	ASN
1	C	229	HIS
1	D	454	ASN
1	D	528	ASN

5.3.3 RNA [i](#)

There are no RNA molecules in this entry.

5.4 Non-standard residues in protein, DNA, RNA chains [i](#)

There are no non-standard protein/DNA/RNA residues in this entry.

5.5 Carbohydrates [i](#)

There are no carbohydrates in this entry.

5.6 Ligand geometry [i](#)

2 ligands are modelled in this entry.

In the following table, the Counts columns list the number of bonds (or angles) for which Mogul statistics could be retrieved, the number of bonds (or angles) that are observed in the model and the number of bonds (or angles) that are defined in the chemical component dictionary. The Link column lists molecule types, if any, to which the group is linked. The Z score for a bond length (or angle) is the number of standard deviations the observed value is removed from the expected value. A bond length (or angle) with $|Z| > 2$ is considered an outlier worth inspection. RMSZ is the root-mean-square of all Z scores of the bond lengths (or angles).

Mol	Type	Chain	Res	Link	Bond lengths			Bond angles		
					Counts	RMSZ	$\# Z > 2$	Counts	RMSZ	$\# Z > 2$
2	5XX	A	601	-	32,40,40	3.77	10 (31%)	33,54,54	1.39	6 (18%)
2	5XX	D	601	-	32,40,40	3.88	10 (31%)	33,54,54	1.56	10 (30%)

In the following table, the Chirals column lists the number of chiral outliers, the number of chiral centers analysed, the number of these observed in the model and the number defined in the chemical component dictionary. Similar counts are reported in the Torsion and Rings columns. '-' means no outliers of that kind were identified.

Mol	Type	Chain	Res	Link	Chirals	Torsions	Rings
2	5XX	A	601	-	-	0/14/33/33	0/3/5/5
2	5XX	D	601	-	-	0/14/33/33	0/3/5/5

All (20) bond length outliers are listed below:

Mol	Chain	Res	Type	Atoms	Z	Observed(Å)	Ideal(Å)
2	D	601	5XX	C04-N03	-11.65	1.31	1.46
2	A	601	5XX	C04-N03	-11.50	1.31	1.46
2	A	601	5XX	C01-C05	-9.82	1.27	1.52
2	D	601	5XX	C01-C05	-9.74	1.27	1.52
2	A	601	5XX	C27-N26	3.08	1.43	1.35
2	D	601	5XX	C27-N26	3.36	1.43	1.35
2	D	601	5XX	C12-N11	3.61	1.44	1.35
2	A	601	5XX	C12-N11	3.83	1.44	1.35
2	D	601	5XX	C25-N26	4.06	1.43	1.36
2	A	601	5XX	C25-N26	4.37	1.43	1.36
2	A	601	5XX	C02-N03	4.79	1.54	1.47
2	D	601	5XX	C02-N03	5.18	1.54	1.47
2	D	601	5XX	C10-N11	5.34	1.45	1.36
2	A	601	5XX	C04-C05	5.56	1.63	1.53
2	A	601	5XX	C10-N11	5.59	1.45	1.36
2	D	601	5XX	C04-C05	5.93	1.63	1.53
2	A	601	5XX	C07-N06	5.98	1.45	1.35
2	A	601	5XX	C22-N03	6.99	1.43	1.32
2	D	601	5XX	C07-N06	6.99	1.46	1.35
2	D	601	5XX	C22-N03	7.84	1.44	1.32

All (16) bond angle outliers are listed below:

Mol	Chain	Res	Type	Atoms	Z	Observed(°)	Ideal(°)
2	A	601	5XX	C07-N06-C05	-3.92	117.71	124.34
2	D	601	5XX	C02-N03-C04	-2.91	104.03	111.54
2	D	601	5XX	O35-C27-N26	-2.91	118.67	123.77
2	A	601	5XX	C02-N03-C04	-2.44	105.26	111.54
2	D	601	5XX	C02-C01-C05	-2.37	100.96	104.28
2	A	601	5XX	C01-C05-N06	-2.35	106.34	111.75
2	D	601	5XX	O20-C12-N11	-2.21	119.90	123.77
2	D	601	5XX	C04-C05-N06	-2.14	108.15	112.79

Continued on next page...

Continued from previous page...

Mol	Chain	Res	Type	Atoms	Z	Observed(°)	Ideal(°)
2	A	601	5XX	O20-C12-N11	-2.13	120.04	123.77
2	D	601	5XX	C04-N03-C22	2.00	129.21	123.49
2	D	601	5XX	C01-C02-N03	2.06	106.02	103.35
2	A	601	5XX	C13-C12-N11	2.11	120.74	114.69
2	D	601	5XX	C13-C12-N11	2.52	121.92	114.69
2	A	601	5XX	C29-C28-C27	2.63	121.19	112.86
2	D	601	5XX	C28-C27-N26	2.79	122.70	114.69
2	D	601	5XX	C07-N06-C05	3.10	129.58	124.34

There are no chirality outliers.

There are no torsion outliers.

There are no ring outliers.

2 monomers are involved in 4 short contacts:

Mol	Chain	Res	Type	Clashes	Symm-Clashes
2	A	601	5XX	3	0
2	D	601	5XX	0	1

5.7 Other polymers [i](#)

There are no such residues in this entry.

5.8 Polymer linkage issues [i](#)

There are no chain breaks in this entry.

6 Fit of model and data ⓘ

6.1 Protein, DNA and RNA chains ⓘ

In the following table, the column labelled ‘#RSRZ > 2’ contains the number (and percentage) of RSRZ outliers, followed by percent RSRZ outliers for the chain as percentile scores relative to all X-ray entries and entries of similar resolution. The OWAB column contains the minimum, median, 95th percentile and maximum values of the occupancy-weighted average B-factor per residue. The column labelled ‘Q < 0.9’ lists the number of (and percentage) of residues with an average occupancy less than 0.9.

Mol	Chain	Analysed	<RSRZ>	#RSRZ>2	OWAB(Å ²)	Q<0.9
1	A	410/539 (76%)	0.65	40 (9%) 10 10	12, 22, 62, 80	0
1	B	410/539 (76%)	0.77	43 (10%) 8 8	11, 22, 66, 91	0
1	C	410/539 (76%)	0.69	49 (11%) 6 6	10, 22, 68, 99	0
1	D	410/539 (76%)	0.67	47 (11%) 6 6	11, 22, 65, 98	0
All	All	1640/2156 (76%)	0.69	179 (10%) 7 7	10, 22, 66, 99	0

All (179) RSRZ outliers are listed below:

Mol	Chain	Res	Type	RSRZ
1	B	315	LEU	24.9
1	D	190	ASP	15.7
1	D	191	GLY	15.0
1	D	314	GLY	13.1
1	A	317	PHE	12.6
1	C	248	TYR	11.4
1	A	137	SER	11.0
1	B	250	PRO	10.5
1	D	188	THR	10.2
1	C	251	GLN	9.9
1	A	316	ARG	9.3
1	C	191	GLY	9.1
1	B	318	ASN	8.8
1	A	315	LEU	8.8
1	A	143	PHE	8.6
1	B	249	ILE	8.5
1	C	316	ARG	8.3
1	C	249	ILE	8.3
1	B	190	ASP	8.2
1	B	255	PHE	8.1
1	B	251	GLN	8.0

Continued on next page...

Continued from previous page...

Mol	Chain	Res	Type	RSRZ
1	C	189	SER	8.0
1	D	315	LEU	7.9
1	C	317	PHE	7.8
1	B	191	GLY	7.8
1	B	317	PHE	7.7
1	D	316	ARG	7.5
1	B	248	TYR	7.2
1	D	147	ALA	7.1
1	A	141	LEU	7.1
1	A	192	VAL	7.1
1	C	255	PHE	6.9
1	C	252	LEU	6.6
1	D	187	THR	6.6
1	C	190	ASP	6.5
1	A	191	GLY	6.5
1	B	252	LEU	6.3
1	D	317	PHE	6.2
1	C	254	LYS	6.2
1	D	149	GLY	6.2
1	C	149	GLY	6.1
1	D	185	LEU	6.1
1	A	190	ASP	6.1
1	C	187	THR	6.1
1	D	545	GLY	6.0
1	C	250	PRO	5.9
1	A	545	GLY	5.7
1	B	545	GLY	5.7
1	B	192	VAL	5.7
1	C	545	GLY	5.6
1	D	141	LEU	5.5
1	C	136	PRO	5.2
1	A	136	PRO	5.2
1	C	147	ALA	5.2
1	C	144	TYR	5.2
1	C	192	VAL	5.1
1	A	194	LEU	5.1
1	B	254	LYS	5.0
1	A	203	VAL	5.0
1	A	251	GLN	5.0
1	B	314	GLY	5.0
1	B	137	SER	4.9
1	D	189	SER	4.9

Continued on next page...

Continued from previous page...

Mol	Chain	Res	Type	RSRZ
1	A	140	ASP	4.8
1	B	316	ARG	4.8
1	A	189	SER	4.7
1	A	252	LEU	4.7
1	B	141	LEU	4.7
1	B	143	PHE	4.6
1	A	199	PHE	4.6
1	B	256	SER	4.4
1	B	347	GLY	4.4
1	D	194	LEU	4.3
1	D	186	GLN	4.2
1	A	318	ASN	4.2
1	D	144	TYR	4.1
1	B	193	MET	4.0
1	D	199	PHE	3.9
1	A	314	GLY	3.9
1	D	195	ASP	3.9
1	C	315	LEU	3.9
1	C	256	SER	3.9
1	D	250	PRO	3.8
1	D	249	ILE	3.8
1	C	183	LEU	3.8
1	B	144	TYR	3.8
1	D	145	THR	3.8
1	A	152	LYS	3.8
1	D	248	TYR	3.8
1	D	254	LYS	3.7
1	C	184	THR	3.7
1	A	193	MET	3.7
1	C	148	GLU	3.6
1	D	251	GLN	3.6
1	B	138	LEU	3.6
1	A	138	LEU	3.6
1	D	140	ASP	3.6
1	D	143	PHE	3.5
1	B	147	ALA	3.5
1	D	148	GLU	3.5
1	C	197	ASP	3.4
1	D	155	VAL	3.4
1	A	147	ALA	3.4
1	C	151	GLU	3.4
1	C	196	LYS	3.3

Continued on next page...

Continued from previous page...

Mol	Chain	Res	Type	RSRZ
1	A	254	LYS	3.3
1	A	149	GLY	3.2
1	D	137	SER	3.2
1	B	151	GLU	3.1
1	C	141	LEU	3.1
1	D	212	GLN	3.1
1	D	318	ASN	3.1
1	A	144	TYR	3.1
1	A	148	GLU	3.1
1	B	152	LYS	3.1
1	C	140	ASP	3.0
1	C	185	LEU	3.0
1	B	148	GLU	3.0
1	C	169	THR	3.0
1	B	153	ILE	2.9
1	C	347	GLY	2.9
1	C	152	LYS	2.9
1	A	201	LYS	2.9
1	C	194	LEU	2.9
1	A	155	VAL	2.8
1	B	189	SER	2.8
1	B	466	ASP	2.8
1	C	203	VAL	2.8
1	A	267	VAL	2.7
1	C	188	THR	2.7
1	D	196	LYS	2.7
1	D	253	ALA	2.7
1	D	252	LEU	2.7
1	C	195	ASP	2.6
1	A	195	ASP	2.6
1	D	192	VAL	2.6
1	D	142	LEU	2.6
1	D	150	GLN	2.6
1	D	347	GLY	2.6
1	B	197	ASP	2.6
1	C	318	ASN	2.5
1	A	207	ILE	2.5
1	D	136	PRO	2.5
1	C	150	GLN	2.5
1	D	152	LYS	2.4
1	A	347	GLY	2.4
1	B	136	PRO	2.4

Continued on next page...

Continued from previous page...

Mol	Chain	Res	Type	RSRZ
1	C	138	LEU	2.4
1	D	257	PRO	2.4
1	C	145	THR	2.4
1	A	256	SER	2.3
1	A	151	GLU	2.3
1	D	151	GLU	2.3
1	C	137	SER	2.3
1	A	188	THR	2.2
1	D	382	GLU	2.2
1	D	193	MET	2.2
1	B	140	ASP	2.2
1	B	195	ASP	2.2
1	A	153	ILE	2.2
1	B	201	LYS	2.2
1	C	257	PRO	2.2
1	B	257	PRO	2.2
1	B	142	LEU	2.2
1	C	204	GLN	2.1
1	B	267	VAL	2.1
1	C	253	ALA	2.1
1	A	142	LEU	2.1
1	C	186	GLN	2.1
1	D	313	SER	2.1
1	B	145	THR	2.0
1	B	458	LEU	2.0
1	A	146	ILE	2.0
1	C	153	ILE	2.0
1	B	478	PRO	2.0
1	B	237	ALA	2.0
1	D	203	VAL	2.0
1	C	159	ILE	2.0
1	C	199	PHE	2.0

6.2 Non-standard residues in protein, DNA, RNA chains ⓘ

There are no non-standard protein/DNA/RNA residues in this entry.

6.3 Carbohydrates ⓘ

There are no carbohydrates in this entry.

6.4 Ligands [i](#)

In the following table, the Atoms column lists the number of modelled atoms in the group and the number defined in the chemical component dictionary. LLDF column lists the quality of electron density of the group with respect to its neighbouring residues in protein, DNA or RNA chains. The B-factors column lists the minimum, median, 95th percentile and maximum values of B factors of atoms in the group. The column labelled 'Q< 0.9' lists the number of atoms with occupancy less than 0.9.

Mol	Type	Chain	Res	Atoms	RSCC	RSR	LLDF	B-factors(\AA^2)	Q<0.9
2	5XX	D	601	36/36	0.77	0.28	0.23	36,46,60,69	0
2	5XX	A	601	36/36	0.78	0.25	-0.35	34,49,73,75	0

6.5 Other polymers [i](#)

There are no such residues in this entry.