



Full wwPDB X-ray Structure Validation Report ⓘ

Feb 1, 2016 – 08:40 AM GMT

PDB ID : 3FLK
Title : Crystal Structure of Tartrate Dehydrogenase from *Pseudomonas putida* in complex with NADH, oxalate and metal ion
Authors : Malik, R.; Viola, R.E.
Deposited on : 2008-12-18
Resolution : 2.00 Å(reported)

This is a Full wwPDB X-ray Structure Validation Report for a publicly released PDB entry.
We welcome your comments at validation@mail.wwpdb.org
A user guide is available at
<http://wwpdb.org/validation/2016/XrayValidationReportHelp>
with specific help available everywhere you see the ⓘ symbol.

The following versions of software and data (see [references ⓘ](#)) were used in the production of this report:

MolProbity : 4.02b-467
Mogul : 1.7 (RC4), CSD as536be (2015)
Xtriage (Phenix) : 1.9-1692
EDS : rb-20026688
Percentile statistics : 20151230.v01 (using entries in the PDB archive December 30th 2015)
Refmac : 5.8.0135
CCP4 : 6.5.0
Ideal geometry (proteins) : Engh & Huber (2001)
Ideal geometry (DNA, RNA) : Parkinson et al. (1996)
Validation Pipeline (wwPDB-VP) : trunk26865

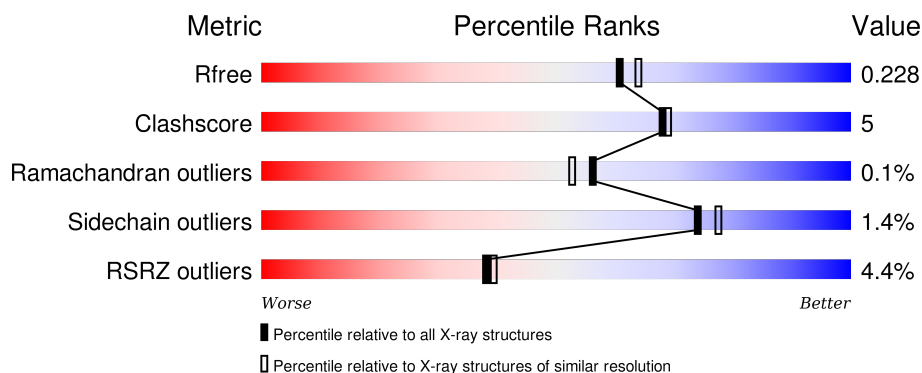
1 Overall quality at a glance

The following experimental techniques were used to determine the structure:

X-RAY DIFFRACTION

The reported resolution of this entry is 2.00 Å.

Percentile scores (ranging between 0-100) for global validation metrics of the entry are shown in the following graphic. The table shows the number of entries on which the scores are based.



Metric	Whole archive (#Entries)	Similar resolution (#Entries, resolution range(Å))
R_{free}	91344	6249 (2.00-2.00)
Clashscore	102246	7340 (2.00-2.00)
Ramachandran outliers	100387	7248 (2.00-2.00)
Sidechain outliers	100360	7247 (2.00-2.00)
RSRZ outliers	91569	6262 (2.00-2.00)

The table below summarises the geometric issues observed across the polymeric chains and their fit to the electron density. The red, orange, yellow and green segments on the lower bar indicate the fraction of residues that contain outliers for ≥ 3 , 2, 1 and 0 types of geometric quality criteria. A grey segment represents the fraction of residues that are not modelled. The numeric value for each fraction is indicated below the corresponding segment, with a dot representing fractions $\leq 5\%$. The upper red bar (where present) indicates the fraction of residues that have poor fit to the electron density. The numeric value is given above the bar.

Mol	Chain	Length	Quality of chain
1	A	364	<div> <div>4%</div> <div>92%</div> <div>6%</div> </div>
1	B	364	<div> <div>4%</div> <div>88%</div> <div>10%</div> </div>
1	C	364	<div> <div>5%</div> <div>90%</div> <div>8%</div> </div>
1	D	364	<div> <div>4%</div> <div>91%</div> <div>7%</div> </div>

The following table lists non-polymeric compounds, carbohydrate monomers and non-standard

residues in protein, DNA, RNA chains that are outliers for geometric or electron-density-fit criteria:

Mol	Type	Chain	Res	Chirality	Geometry	Clashes	Electron density
4	OXL	B	402	-	-	-	X
5	NH4	B	403	-	-	-	X
5	NH4	D	403	-	-	-	X
6	SO4	A	406	-	-	-	X
6	SO4	C	408	-	-	-	X
6	SO4	D	406	-	-	-	X
7	DTT	B	407	X	-	-	-
7	DTT	C	409	X	-	-	X

2 Entry composition

There are 8 unique types of molecules in this entry. The entry contains 12469 atoms, of which 0 are hydrogens and 0 are deuteriums.

In the tables below, the ZeroOcc column contains the number of atoms modelled with zero occupancy, the AltConf column contains the number of residues with at least one atom in alternate conformation and the Trace column contains the number of residues modelled with at most 2 atoms.

- Molecule 1 is a protein called Tartrate dehydrogenase/decarboxylase.

Mol	Chain	Residues	Atoms						ZeroOcc	AltConf	Trace
1	A	359	Total	C	N	O	S	Se	0	0	0
			2809	1789	483	523	4	10			
1	B	359	Total	C	N	O	S	Se	0	0	0
			2813	1792	484	523	4	10			
1	C	359	Total	C	N	O	S	Se	0	0	0
			2813	1792	484	523	4	10			
1	D	359	Total	C	N	O	S	Se	0	0	0
			2813	1792	484	523	4	10			

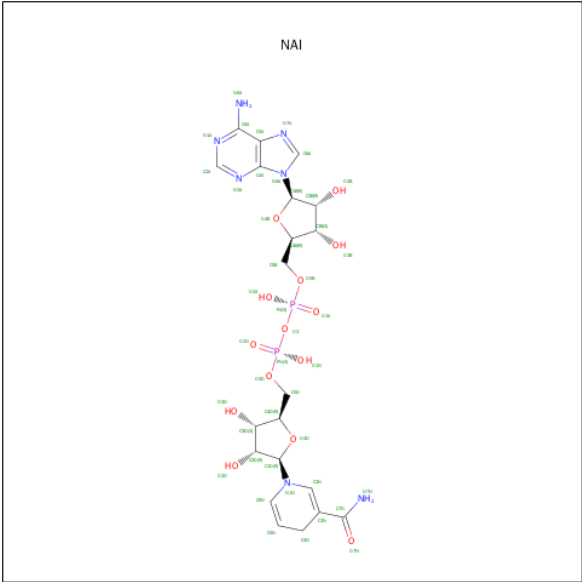
There are 8 discrepancies between the modelled and reference sequences:

Chain	Residue	Modelled	Actual	Comment	Reference
A	79	GLY	ASP	ENGINEERED	UNP Q51945
A	?	-	VAL	DELETION	UNP Q51945
B	79	GLY	ASP	ENGINEERED	UNP Q51945
B	?	-	VAL	DELETION	UNP Q51945
C	79	GLY	ASP	ENGINEERED	UNP Q51945
C	?	-	VAL	DELETION	UNP Q51945
D	79	GLY	ASP	ENGINEERED	UNP Q51945
D	?	-	VAL	DELETION	UNP Q51945

- Molecule 2 is MAGNESIUM ION (three-letter code: MG) (formula: Mg).

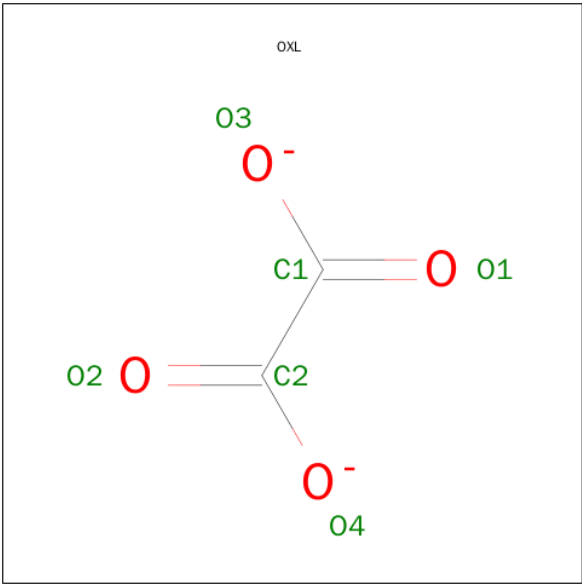
Mol	Chain	Residues	Atoms		ZeroOcc	AltConf
2	A	2	Total	Mg	0	0
			2	2		
2	C	2	Total	Mg	0	0
			2	2		

- Molecule 3 is 1,4-DIHYDRONICOTINAMIDE ADENINE DINUCLEOTIDE (three-letter code: NAI) (formula: C₂₁H₂₉N₇O₁₄P₂).



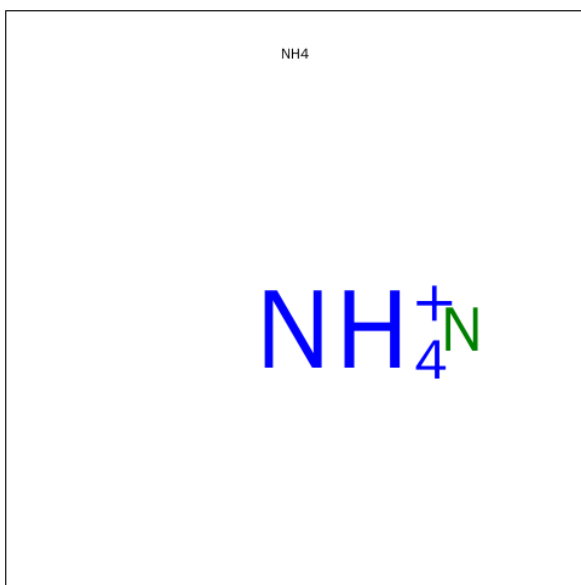
Mol	Chain	Residues	Atoms					ZeroOcc	AltConf
3	A	1	Total	C	N	O	P	0	0
			44	21	7	14	2		
3	B	1	Total	C	N	O	P	0	0
			44	21	7	14	2		
3	C	1	Total	C	N	O	P	0	0
			44	21	7	14	2		
3	D	1	Total	C	N	O	P	0	0
			44	21	7	14	2		

- Molecule 4 is OXALATE ION (three-letter code: OXL) (formula: C₂O₄).



Mol	Chain	Residues	Atoms	ZeroOcc	AltConf
4	A	1	Total C O 6 2 4	0	0
4	B	1	Total C O 6 2 4	0	0
4	C	1	Total C O 6 2 4	0	0
4	D	1	Total C O 6 2 4	0	0

- Molecule 5 is AMMONIUM ION (three-letter code: NH4) (formula: H₄N).



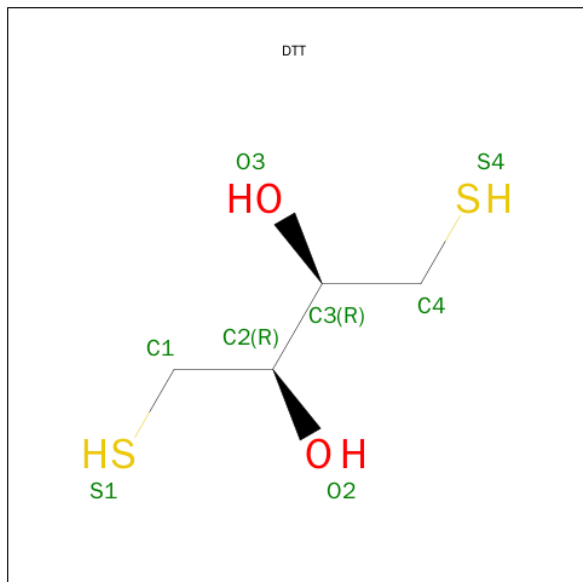
Mol	Chain	Residues	Atoms	ZeroOcc	AltConf
5	A	1	Total N 1 1	0	0
5	B	1	Total N 1 1	0	0
5	C	1	Total N 1 1	0	0
5	D	1	Total N 1 1	0	0

- Molecule 6 is SULFATE ION (three-letter code: SO4) (formula: O₄S).



Mol	Chain	Residues	Atoms			ZeroOcc	AltConf
6	A	1	Total	O	S	0	0
			5	4	1		
6	A	1	Total	O	S	0	0
			5	4	1		
6	A	1	Total	O	S	0	0
			5	4	1		
6	A	1	Total	O	S	0	0
			5	4	1		
6	B	1	Total	O	S	0	0
			5	4	1		
6	B	1	Total	O	S	0	0
			5	4	1		
6	B	1	Total	O	S	0	0
			5	4	1		
6	C	1	Total	O	S	0	0
			5	4	1		
6	C	1	Total	O	S	0	0
			5	4	1		
6	C	1	Total	O	S	0	0
			5	4	1		
6	D	1	Total	O	S	0	0
			5	4	1		
6	D	1	Total	O	S	0	0
			5	4	1		
6	D	1	Total	O	S	0	0
			5	4	1		

- Molecule 7 is 2,3-DIHYDROXY-1,4-DITHIOBUTANE (three-letter code: DTT) (formula: $C_4H_{10}O_2S_2$).



Mol	Chain	Residues	Atoms				ZeroOcc	AltConf
7	B	1	Total	C	O	S	0	0
			8	4	2	2		
7	C	1	Total	C	O	S	0	0
			8	4	2	2		
7	D	1	Total	C	O	S	0	0
			8	4	2	2		

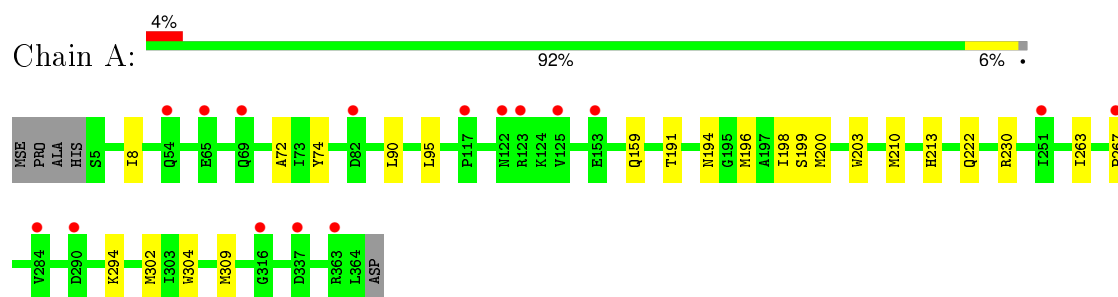
- Molecule 8 is water.

Mol	Chain	Residues	Atoms		ZeroOcc	AltConf
8	A	238	Total	O	0	0
			238	238		
8	B	217	Total	O	0	0
			217	217		
8	C	180	Total	O	0	0
			180	180		
8	D	284	Total	O	0	0
			284	284		

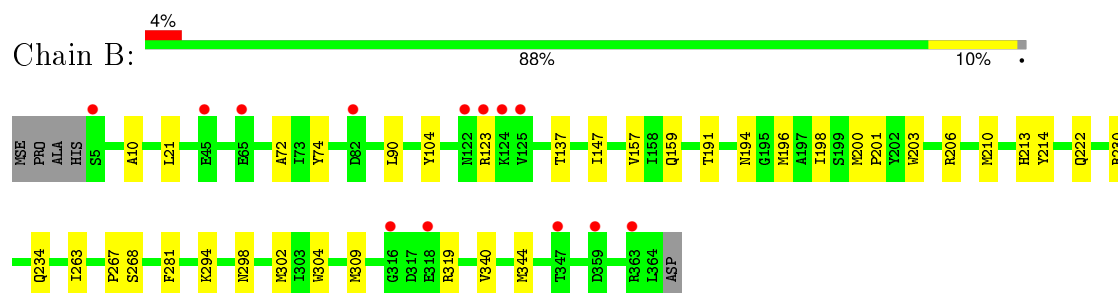
3 Residue-property plots [i](#)

These plots are drawn for all protein, RNA and DNA chains in the entry. The first graphic for a chain summarises the proportions of errors displayed in the second graphic. The second graphic shows the sequence view annotated by issues in geometry and electron density. Residues are color-coded according to the number of geometric quality criteria for which they contain at least one outlier: green = 0, yellow = 1, orange = 2 and red = 3 or more. A red dot above a residue indicates a poor fit to the electron density ($RSRZ > 2$). Stretches of 2 or more consecutive residues without any outlier are shown as a green connector. Residues present in the sample, but not in the model, are shown in grey.

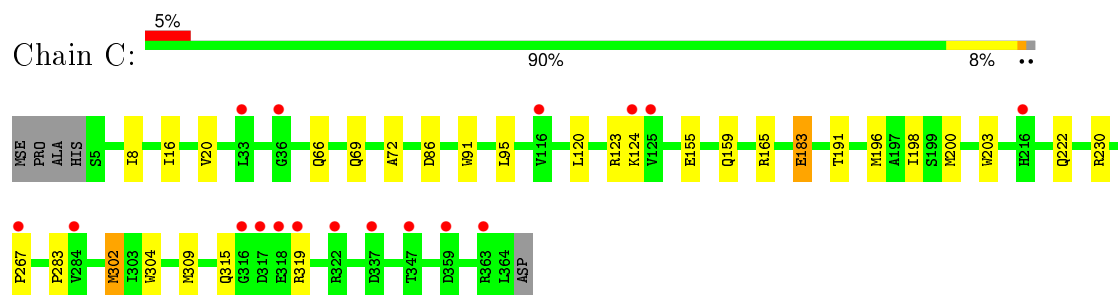
- Molecule 1: Tartrate dehydrogenase/decarboxylase



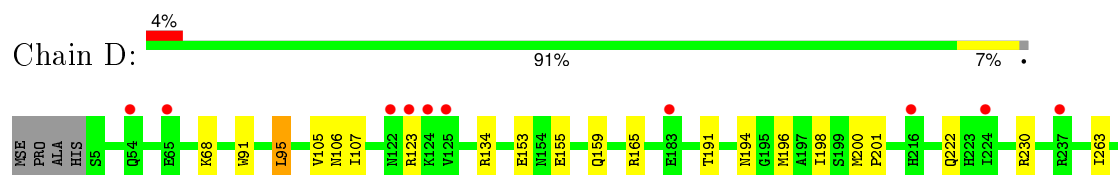
- Molecule 1: Tartrate dehydrogenase/decarboxylase

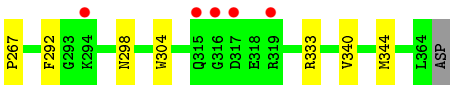


- Molecule 1: Tartrate dehydrogenase/decarboxylase



- Molecule 1: Tartrate dehydrogenase/decarboxylase





4 Data and refinement statistics

Property	Value	Source
Space group	P 43 21 2	Depositor
Cell constants a, b, c, α , β , γ	117.28Å 117.28Å 291.32Å 90.00° 90.00° 90.00°	Depositor
Resolution (Å)	50.00 – 2.00 35.63 – 2.00	Depositor EDS
% Data completeness (in resolution range)	99.0 (50.00-2.00) 99.0 (35.63-2.00)	Depositor EDS
R_{merge}	(Not available)	Depositor
R_{sym}	0.11	Depositor
$\langle I/\sigma(I) \rangle$ ¹	3.95 (at 2.00Å)	Xtriage
Refinement program	REFMAC 5.2.0019	Depositor
R, R_{free}	0.208 , 0.227 0.209 , 0.228	Depositor DCC
R_{free} test set	6862 reflections (5.29%)	DCC
Wilson B-factor (Å ²)	20.8	Xtriage
Anisotropy	0.152	Xtriage
Bulk solvent k_{sol} (e/Å ³), B_{sol} (Å ²)	0.39 , 47.5	EDS
Estimated twinning fraction	No twinning to report.	Xtriage
L-test for twinning ²	$\langle L \rangle = 0.48$, $\langle L^2 \rangle = 0.31$	Xtriage
Outliers	0 of 136662 reflections	Xtriage
F_o, F_c correlation	0.93	EDS
Total number of atoms	12469	wwPDB-VP
Average B, all atoms (Å ²)	21.0	wwPDB-VP

Xtriage's analysis on translational NCS is as follows: *The largest off-origin peak in the Patterson function is 2.58% of the height of the origin peak. No significant pseudotranslation is detected.*

¹Intensities estimated from amplitudes.

²Theoretical values of $\langle |L| \rangle$, $\langle L^2 \rangle$ for acentric reflections are 0.5, 0.375 respectively for untwinned datasets, and 0.333, 0.2 for perfectly twinned datasets.

5 Model quality [i](#)

5.1 Standard geometry [i](#)

Bond lengths and bond angles in the following residue types are not validated in this section: MG, NAI, OXL, NH4, SO4, DTT

The Z score for a bond length (or angle) is the number of standard deviations the observed value is removed from the expected value. A bond length (or angle) with $|Z| > 5$ is considered an outlier worth inspection. RMSZ is the root-mean-square of all Z scores of the bond lengths (or angles).

Mol	Chain	Bond lengths		Bond angles	
		RMSZ	$\# Z > 5$	RMSZ	$\# Z > 5$
1	A	0.34	0/2868	0.48	0/3877
1	B	0.33	0/2872	0.47	0/3881
1	C	0.33	0/2872	0.48	0/3881
1	D	0.35	0/2872	0.51	0/3881
All	All	0.34	0/11484	0.49	0/15520

There are no bond length outliers.

There are no bond angle outliers.

There are no chirality outliers.

There are no planarity outliers.

5.2 Too-close contacts [i](#)

In the following table, the Non-H and H(model) columns list the number of non-hydrogen atoms and hydrogen atoms in the chain respectively. The H(added) column lists the number of hydrogen atoms added and optimized by MolProbity. The Clashes column lists the number of clashes within the asymmetric unit, whereas Symm-Clashes lists symmetry related clashes.

Mol	Chain	Non-H	H(model)	H(added)	Clashes	Symm-Clashes
1	A	2809	0	2735	26	0
1	B	2813	0	2746	38	0
1	C	2813	0	2746	29	0
1	D	2813	0	2746	25	0
2	A	2	0	0	0	0
2	C	2	0	0	0	0
3	A	44	0	27	0	0
3	B	44	0	27	0	0
3	C	44	0	27	0	0

Continued on next page...

Continued from previous page...

Mol	Chain	Non-H	H(model)	H(added)	Clashes	Symm-Clashes
3	D	44	0	27	0	0
4	A	6	0	0	0	0
4	B	6	0	0	0	0
4	C	6	0	0	0	0
4	D	6	0	0	0	0
5	A	1	0	0	0	0
5	B	1	0	0	0	0
5	C	1	0	0	0	0
5	D	1	0	0	0	0
6	A	20	0	0	0	0
6	B	15	0	0	0	0
6	C	15	0	0	0	0
6	D	20	0	0	0	0
7	B	8	0	10	1	0
7	C	8	0	10	0	0
7	D	8	0	10	1	0
8	A	238	0	0	1	0
8	B	217	0	0	1	0
8	C	180	0	0	2	0
8	D	284	0	0	3	0
All	All	12469	0	11111	107	0

The all-atom clashscore is defined as the number of clashes found per 1000 atoms (including hydrogen atoms). The all-atom clashscore for this structure is 5.

All (107) close contacts within the same asymmetric unit are listed below, sorted by their clash magnitude.

Atom-1	Atom-2	Interatomic distance (Å)	Clash overlap (Å)
1:A:72:ALA:HB3	1:A:309:MSE:HE3	1.21	1.16
1:A:8:ILE:HD12	1:A:309:MSE:HE2	1.38	1.04
1:C:72:ALA:HB3	1:C:309:MSE:HE3	1.38	1.01
1:C:8:ILE:HD12	1:C:309:MSE:HE2	1.51	0.92
1:C:8:ILE:HG23	1:C:309:MSE:HE1	1.53	0.91
1:A:72:ALA:CB	1:A:309:MSE:HE3	2.00	0.91
1:A:8:ILE:HG23	1:A:309:MSE:HE1	1.51	0.90
1:B:191:THR:HA	1:B:200:MSE:HE2	1.57	0.86
1:C:72:ALA:CB	1:C:309:MSE:HE3	2.05	0.86
1:B:340:VAL:HB	1:B:344:MSE:HE3	1.63	0.81
1:D:340:VAL:HB	1:D:344:MSE:HE3	1.62	0.79
1:C:191:THR:OG1	1:C:200:MSE:HE2	1.83	0.79
1:D:344:MSE:CE	8:D:712:HOH:O	2.30	0.78

Continued on next page...

Continued from previous page...

Atom-1	Atom-2	Interatomic distance (Å)	Clash overlap (Å)
1:D:191:THR:HA	1:D:200:MSE:HE2	1.65	0.78
1:A:8:ILE:HD12	1:A:309:MSE:CE	2.16	0.76
1:D:344:MSE:HE1	8:D:712:HOH:O	1.85	0.76
1:A:72:ALA:HB3	1:A:309:MSE:CE	2.12	0.73
1:A:191:THR:OG1	1:A:200:MSE:HE2	1.88	0.73
1:B:210:MSE:HE2	1:B:214:TYR:HE2	1.54	0.73
1:C:72:ALA:HB3	1:C:309:MSE:CE	2.17	0.70
1:B:298:ASN:ND2	1:B:344:MSE:HE2	2.06	0.69
1:D:298:ASN:ND2	1:D:344:MSE:HE2	2.08	0.69
1:C:183:GLU:CD	1:C:183:GLU:H	1.96	0.68
1:B:210:MSE:HE2	1:B:214:TYR:CE2	2.28	0.68
1:A:200:MSE:HE1	1:A:203:TRP:CD1	2.29	0.67
1:B:191:THR:CA	1:B:200:MSE:HE2	2.24	0.66
1:B:191:THR:OG1	1:B:200:MSE:HE2	1.98	0.63
1:C:159:GLN:HE22	1:D:198:ILE:H	1.46	0.63
1:A:210:MSE:HA	1:A:210:MSE:HE3	1.80	0.62
1:B:281:PHE:HB2	1:B:309:MSE:HE3	1.84	0.59
1:B:281:PHE:CD2	1:B:309:MSE:HE3	2.37	0.59
1:D:191:THR:CA	1:D:200:MSE:HE2	2.32	0.59
1:B:191:THR:HA	1:B:200:MSE:CE	2.32	0.58
1:B:200:MSE:HE1	1:B:203:TRP:CD1	2.39	0.58
1:A:191:THR:HA	1:A:200:MSE:HE2	1.85	0.58
1:B:210:MSE:SE	8:B:707:HOH:O	2.73	0.56
1:A:159:GLN:HE22	1:B:198:ILE:H	1.51	0.56
1:D:191:THR:OG1	1:D:200:MSE:HE2	2.05	0.56
1:C:20:VAL:CG2	1:C:302:MSE:HG3	2.36	0.55
1:C:200:MSE:HE1	1:C:203:TRP:CD1	2.42	0.54
1:B:10:ALA:HB1	1:B:21:LEU:HD21	1.90	0.54
1:C:198:ILE:H	1:D:159:GLN:HE22	1.54	0.54
1:C:8:ILE:HD12	1:C:309:MSE:CE	2.29	0.53
1:C:283:PRO:HD3	1:C:302:MSE:HE3	1.89	0.53
1:C:200:MSE:HE3	1:C:203:TRP:HB3	1.90	0.53
1:B:72:ALA:HB1	1:B:309:MSE:HE2	1.89	0.53
1:B:206:ARG:HH12	7:B:407:DTT:H41	1.74	0.53
8:C:562:HOH:O	1:D:153:GLU:HG3	2.10	0.52
1:C:267:PRO:HG3	1:C:304:TRP:CD2	2.45	0.52
1:A:194:ASN:HB2	1:B:90:LEU:HD22	1.91	0.52
1:C:20:VAL:HG23	1:C:302:MSE:HG3	1.92	0.51
1:D:267:PRO:HG3	1:D:304:TRP:CD2	2.46	0.50
1:B:196:MSE:HE2	1:B:200:MSE:HG2	1.92	0.50
1:D:222:GLN:HE22	1:D:230:ARG:HD2	1.75	0.50

Continued on next page...

Continued from previous page...

Atom-1	Atom-2	Interatomic distance (Å)	Clash overlap (Å)
1:C:222:GLN:NE2	1:C:230:ARG:HD2	2.27	0.50
1:D:91:TRP:CD2	1:D:95:LEU:HD23	2.46	0.50
1:A:90:LEU:HD22	1:B:194:ASN:HB2	1.93	0.50
1:B:230:ARG:HD3	1:B:234:GLN:HE21	1.78	0.48
1:C:191:THR:HA	1:C:200:MSE:HE2	1.96	0.48
1:B:222:GLN:HE22	1:B:230:ARG:HD2	1.77	0.48
1:A:267:PRO:HG3	1:A:304:TRP:CD2	2.48	0.48
1:C:16:ILE:O	1:C:20:VAL:HG22	2.14	0.48
1:B:74:TYR:CE1	1:B:302:MSE:HE2	2.49	0.48
1:A:199:SER:H	1:B:159:GLN:NE2	2.11	0.48
1:D:91:TRP:CE2	1:D:95:LEU:HD23	2.50	0.47
1:B:222:GLN:NE2	1:B:230:ARG:HD2	2.30	0.47
1:C:222:GLN:HE22	1:C:230:ARG:HD2	1.79	0.47
1:A:198:ILE:H	1:B:159:GLN:NE2	2.13	0.47
1:C:155:GLU:HB3	1:D:165:ARG:HB2	1.97	0.47
1:A:191:THR:CB	1:A:200:MSE:HE2	2.44	0.46
1:A:191:THR:CA	1:A:200:MSE:HE2	2.46	0.46
1:B:298:ASN:HD21	1:B:344:MSE:HE2	1.80	0.46
1:A:196:MSE:HE2	1:A:200:MSE:HG2	1.97	0.46
1:B:267:PRO:HG3	1:B:304:TRP:CD2	2.50	0.46
1:B:191:THR:CB	1:B:200:MSE:HE2	2.46	0.45
1:C:86:ASP:HB3	1:D:194:ASN:HB3	1.99	0.45
1:C:191:THR:CB	1:C:200:MSE:HE2	2.46	0.45
1:B:281:PHE:CD2	1:B:309:MSE:CE	3.00	0.45
1:A:74:TYR:CE1	1:A:302:MSE:HE2	2.52	0.45
1:D:191:THR:HA	1:D:200:MSE:CE	2.42	0.44
1:A:210:MSE:HE2	1:A:213:HIS:HB2	1.99	0.44
1:A:222:GLN:NE2	1:A:230:ARG:HD2	2.31	0.44
1:D:292:PHE:CE2	7:D:408:DTT:H11	2.52	0.44
1:A:196:MSE:HE3	8:A:672:HOH:O	2.18	0.44
1:D:196:MSE:HE3	8:D:715:HOH:O	2.18	0.44
1:B:147:ILE:HG13	1:B:157:VAL:HG22	1.99	0.43
1:D:191:THR:CB	1:D:200:MSE:HE2	2.48	0.43
1:A:222:GLN:HE22	1:A:230:ARG:HD2	1.84	0.43
1:B:281:PHE:HD2	1:B:309:MSE:CE	2.31	0.43
1:A:200:MSE:HE3	1:A:203:TRP:HB3	1.99	0.43
1:B:210:MSE:CE	1:B:213:HIS:HB2	2.49	0.43
1:A:198:ILE:HB	1:B:159:GLN:HE21	1.84	0.43
1:C:196:MSE:HE2	1:C:200:MSE:HG2	2.00	0.43
1:C:91:TRP:CE2	1:C:95:LEU:HD23	2.55	0.42
1:C:196:MSE:HE3	8:C:679:HOH:O	2.18	0.42

Continued on next page...

Continued from previous page...

Atom-1	Atom-2	Interatomic distance (Å)	Clash overlap (Å)
1:D:196:MSE:O	1:D:201:PRO:HD3	2.20	0.42
1:D:222:GLN:NE2	1:D:230:ARG:HD2	2.34	0.41
1:B:267:PRO:HG3	1:B:304:TRP:CG	2.56	0.41
1:B:281:PHE:HD2	1:B:309:MSE:HE3	1.81	0.41
1:C:165:ARG:HB2	1:D:155:GLU:HB3	2.03	0.41
1:C:120:LEU:HB2	1:C:123:ARG:HG3	2.02	0.41
1:B:196:MSE:O	1:B:201:PRO:HD3	2.21	0.41
1:D:105:VAL:HG12	1:D:107:ILE:HG12	2.02	0.41
1:C:66:GLN:O	1:C:69:GLN:HG2	2.21	0.41
1:D:106:ASN:HB3	1:D:134:ARG:HB3	2.03	0.40
1:B:104:TYR:HA	1:B:137:THR:HG23	2.03	0.40
1:B:191:THR:OG1	1:B:200:MSE:CE	2.67	0.40

There are no symmetry-related clashes.

5.3 Torsion angles ⓘ

5.3.1 Protein backbone ⓘ

In the following table, the Percentiles column shows the percent Ramachandran outliers of the chain as a percentile score with respect to all X-ray entries followed by that with respect to entries of similar resolution.

The Analysed column shows the number of residues for which the backbone conformation was analysed, and the total number of residues.

Mol	Chain	Analysed	Favoured	Allowed	Outliers	Percentiles	
1	A	357/364 (98%)	349 (98%)	8 (2%)	0	100	100
1	B	357/364 (98%)	347 (97%)	10 (3%)	0	100	100
1	C	357/364 (98%)	346 (97%)	10 (3%)	1 (0%)	46	41
1	D	357/364 (98%)	348 (98%)	9 (2%)	0	100	100
All	All	1428/1456 (98%)	1390 (97%)	37 (3%)	1 (0%)	56	53

All (1) Ramachandran outliers are listed below:

Mol	Chain	Res	Type
1	C	315	GLN

5.3.2 Protein sidechains ⓘ

In the following table, the Percentiles column shows the percent sidechain outliers of the chain as a percentile score with respect to all X-ray entries followed by that with respect to entries of similar resolution.

The Analysed column shows the number of residues for which the sidechain conformation was analysed, and the total number of residues.

Mol	Chain	Analysed	Rotameric	Outliers	Percentiles	
1	A	294/288 (102%)	291 (99%)	3 (1%)	82	85
1	B	295/288 (102%)	290 (98%)	5 (2%)	68	71
1	C	295/288 (102%)	291 (99%)	4 (1%)	74	77
1	D	295/288 (102%)	290 (98%)	5 (2%)	68	71
All	All	1179/1152 (102%)	1162 (99%)	17 (1%)	74	77

All (17) residues with a non-rotameric sidechain are listed below:

Mol	Chain	Res	Type
1	A	95	LEU
1	A	263	ILE
1	A	294	LYS
1	B	123	ARG
1	B	263	ILE
1	B	268	SER
1	B	294	LYS
1	B	319	ARG
1	C	124	LYS
1	C	183	GLU
1	C	302	MSE
1	C	319	ARG
1	D	68	LYS
1	D	95	LEU
1	D	123	ARG
1	D	263	ILE
1	D	333	ARG

Some sidechains can be flipped to improve hydrogen bonding and reduce clashes. All (11) such sidechains are listed below:

Mol	Chain	Res	Type
1	A	159	GLN
1	A	186	HIS

Continued on next page...

Continued from previous page...

Mol	Chain	Res	Type
1	A	222	GLN
1	B	159	GLN
1	B	222	GLN
1	B	234	GLN
1	C	69	GLN
1	C	159	GLN
1	C	222	GLN
1	D	159	GLN
1	D	222	GLN

5.3.3 RNA [i](#)

There are no RNA molecules in this entry.

5.4 Non-standard residues in protein, DNA, RNA chains [i](#)

There are no non-standard protein/DNA/RNA residues in this entry.

5.5 Carbohydrates [i](#)

There are no carbohydrates in this entry.

5.6 Ligand geometry [i](#)

Of 33 ligands modelled in this entry, 4 are monoatomic and 4 are modelled with single atom - leaving 25 for Mogul analysis.

In the following table, the Counts columns list the number of bonds (or angles) for which Mogul statistics could be retrieved, the number of bonds (or angles) that are observed in the model and the number of bonds (or angles) that are defined in the chemical component dictionary. The Link column lists molecule types, if any, to which the group is linked. The Z score for a bond length (or angle) is the number of standard deviations the observed value is removed from the expected value. A bond length (or angle) with $|Z| > 2$ is considered an outlier worth inspection. RMSZ is the root-mean-square of all Z scores of the bond lengths (or angles).

Mol	Type	Chain	Res	Link	Bond lengths			Bond angles		
					Counts	RMSZ	$\# Z > 2$	Counts	RMSZ	$\# Z > 2$
3	NAI	A	402	-	38,48,48	1.75	5 (13%)	48,73,73	2.04	3 (6%)
4	OXL	A	403	2	0,5,5	0.00	-	0,6,6	0.00	-
6	SO4	A	406	-	4,4,4	0.23	0	6,6,6	0.12	0
6	SO4	A	407	-	4,4,4	0.23	0	6,6,6	0.07	0

Mol	Type	Chain	Res	Link	Bond lengths			Bond angles		
					Counts	RMSZ	# Z > 2	Counts	RMSZ	# Z > 2
6	SO4	A	408	-	4,4,4	0.21	0	6,6,6	0.08	0
6	SO4	A	409	-	4,4,4	0.23	0	6,6,6	0.06	0
3	NAI	B	401	-	38,48,48	1.75	6 (15%)	48,73,73	1.99	3 (6%)
4	OXL	B	402	2	0,5,5	0.00	-	0,6,6	0.00	-
6	SO4	B	404	-	4,4,4	0.23	0	6,6,6	0.08	0
6	SO4	B	405	-	4,4,4	0.22	0	6,6,6	0.08	0
6	SO4	B	406	-	4,4,4	0.23	0	6,6,6	0.08	0
7	DTT	B	407	-	7,7,7	0.65	0	4,8,8	0.36	0
3	NAI	C	402	-	38,48,48	1.75	6 (15%)	48,73,73	2.03	3 (6%)
4	OXL	C	403	2	0,5,5	0.00	-	0,6,6	0.00	-
6	SO4	C	406	-	4,4,4	0.23	0	6,6,6	0.10	0
6	SO4	C	407	-	4,4,4	0.23	0	6,6,6	0.07	0
6	SO4	C	408	-	4,4,4	0.22	0	6,6,6	0.08	0
7	DTT	C	409	-	7,7,7	0.64	0	4,8,8	0.34	0
3	NAI	D	401	-	38,48,48	1.73	5 (13%)	48,73,73	2.04	3 (6%)
4	OXL	D	402	2	0,5,5	0.00	-	0,6,6	0.00	-
6	SO4	D	404	-	4,4,4	0.20	0	6,6,6	0.12	0
6	SO4	D	405	-	4,4,4	0.25	0	6,6,6	0.07	0
6	SO4	D	406	-	4,4,4	0.21	0	6,6,6	0.09	0
6	SO4	D	407	-	4,4,4	0.22	0	6,6,6	0.10	0
7	DTT	D	408	-	7,7,7	0.58	0	4,8,8	0.67	0

In the following table, the Chirals column lists the number of chiral outliers, the number of chiral centers analysed, the number of these observed in the model and the number defined in the chemical component dictionary. Similar counts are reported in the Torsion and Rings columns. '-' means no outliers of that kind were identified.

Mol	Type	Chain	Res	Link	Chirals	Torsions	Rings
3	NAI	A	402	-	-	0/25/72/72	0/5/5/5
4	OXL	A	403	2	-	0/0/4/4	0/0/0/0
6	SO4	A	406	-	-	0/0/0/0	0/0/0/0
6	SO4	A	407	-	-	0/0/0/0	0/0/0/0
6	SO4	A	408	-	-	0/0/0/0	0/0/0/0
6	SO4	A	409	-	-	0/0/0/0	0/0/0/0
3	NAI	B	401	-	-	0/25/72/72	0/5/5/5
4	OXL	B	402	2	-	0/0/4/4	0/0/0/0
6	SO4	B	404	-	-	0/0/0/0	0/0/0/0
6	SO4	B	405	-	-	0/0/0/0	0/0/0/0
6	SO4	B	406	-	-	0/0/0/0	0/0/0/0
7	DTT	B	407	-	1/1/2/2	0/8/8/8	0/0/0/0
3	NAI	C	402	-	-	0/25/72/72	0/5/5/5
4	OXL	C	403	2	-	0/0/4/4	0/0/0/0

Continued on next page...

Continued from previous page...

Mol	Type	Chain	Res	Link	Chirals	Torsions	Rings
6	SO4	C	406	-	-	0/0/0/0	0/0/0/0
6	SO4	C	407	-	-	0/0/0/0	0/0/0/0
6	SO4	C	408	-	-	0/0/0/0	0/0/0/0
7	DTT	C	409	-	1/1/2/2	0/8/8/8	0/0/0/0
3	NAI	D	401	-	-	0/25/72/72	0/5/5/5
4	OXL	D	402	2	-	0/0/4/4	0/0/0/0
6	SO4	D	404	-	-	0/0/0/0	0/0/0/0
6	SO4	D	405	-	-	0/0/0/0	0/0/0/0
6	SO4	D	406	-	-	0/0/0/0	0/0/0/0
6	SO4	D	407	-	-	0/0/0/0	0/0/0/0
7	DTT	D	408	-	-	0/8/8/8	0/0/0/0

All (22) bond length outliers are listed below:

Mol	Chain	Res	Type	Atoms	Z	Observed(Å)	Ideal(Å)
3	C	402	NAI	C4N-C5N	-4.27	1.39	1.49
3	A	402	NAI	C4N-C5N	-4.23	1.39	1.49
3	D	401	NAI	C4N-C5N	-4.22	1.40	1.49
3	B	401	NAI	C4N-C5N	-4.15	1.40	1.49
3	C	402	NAI	C2N-C3N	2.06	1.39	1.34
3	B	401	NAI	C2N-C3N	2.10	1.39	1.34
3	A	402	NAI	C2A-N1A	2.32	1.38	1.33
3	D	401	NAI	C2A-N1A	2.51	1.38	1.33
3	C	402	NAI	C2A-N1A	2.54	1.38	1.33
3	B	401	NAI	C2A-N1A	2.54	1.38	1.33
3	D	401	NAI	C6N-C5N	3.29	1.39	1.33
3	C	402	NAI	C6N-C5N	3.29	1.39	1.33
3	B	401	NAI	C6N-C5N	3.40	1.39	1.33
3	A	402	NAI	C6N-C5N	3.42	1.39	1.33
3	A	402	NAI	C2A-N3A	3.67	1.38	1.32
3	C	402	NAI	C2A-N3A	3.70	1.38	1.32
3	B	401	NAI	C2A-N3A	3.71	1.38	1.32
3	D	401	NAI	C2A-N3A	3.73	1.38	1.32
3	D	401	NAI	O7N-C7N	6.66	1.41	1.24
3	B	401	NAI	O7N-C7N	6.72	1.41	1.24
3	C	402	NAI	O7N-C7N	6.78	1.41	1.24
3	A	402	NAI	O7N-C7N	6.81	1.41	1.24

All (12) bond angle outliers are listed below:

Mol	Chain	Res	Type	Atoms	Z	Observed(°)	Ideal(°)
3	A	402	NAI	N3A-C2A-N1A	-12.18	119.56	128.89

Continued on next page...

Continued from previous page...

Mol	Chain	Res	Type	Atoms	Z	Observed(°)	Ideal(°)
3	D	401	NAI	N3A-C2A-N1A	-12.13	119.61	128.89
3	C	402	NAI	N3A-C2A-N1A	-12.06	119.66	128.89
3	B	401	NAI	N3A-C2A-N1A	-11.74	119.91	128.89
3	D	401	NAI	C2B-C1B-N9A	-2.74	110.11	114.29
3	B	401	NAI	C2B-C1B-N9A	-2.49	110.48	114.29
3	C	402	NAI	C2B-C1B-N9A	-2.23	110.88	114.29
3	A	402	NAI	C1D-N1N-C2N	-2.15	117.16	120.91
3	D	401	NAI	C5N-C4N-C3N	2.62	119.74	112.52
3	C	402	NAI	C5N-C4N-C3N	2.62	119.75	112.52
3	B	401	NAI	C5N-C4N-C3N	2.63	119.76	112.52
3	A	402	NAI	C5N-C4N-C3N	2.73	120.05	112.52

All (2) chirality outliers are listed below:

Mol	Chain	Res	Type	Atom
7	B	407	DTT	C3
7	C	409	DTT	C3

There are no torsion outliers.

There are no ring outliers.

2 monomers are involved in 2 short contacts:

Mol	Chain	Res	Type	Clashes	Symm-Clashes
7	B	407	DTT	1	0
7	D	408	DTT	1	0

5.7 Other polymers [i](#)

There are no such residues in this entry.

5.8 Polymer linkage issues [i](#)

There are no chain breaks in this entry.

6 Fit of model and data ⓘ

6.1 Protein, DNA and RNA chains ⓘ

In the following table, the column labelled ‘#RSRZ> 2’ contains the number (and percentage) of RSRZ outliers, followed by percent RSRZ outliers for the chain as percentile scores relative to all X-ray entries and entries of similar resolution. The OWAB column contains the minimum, median, 95th percentile and maximum values of the occupancy-weighted average B-factor per residue. The column labelled ‘Q< 0.9’ lists the number of (and percentage) of residues with an average occupancy less than 0.9.

Mol	Chain	Analysed	<RSRZ>	#RSRZ>2	OWAB(Å ²)	Q<0.9
1	A	349/364 (95%)	0.23	16 (4%) 36 38	10, 18, 28, 36	0
1	B	349/364 (95%)	0.31	13 (3%) 45 47	10, 20, 31, 37	0
1	C	349/364 (95%)	0.47	17 (4%) 33 35	12, 22, 35, 45	0
1	D	349/364 (95%)	0.16	15 (4%) 39 40	8, 16, 29, 35	0
All	All	1396/1456 (95%)	0.30	61 (4%) 38 39	8, 19, 32, 45	0

All (61) RSRZ outliers are listed below:

Mol	Chain	Res	Type	RSRZ
1	A	316	GLY	5.4
1	D	316	GLY	5.3
1	D	124	LYS	4.6
1	C	316	GLY	4.4
1	B	122	ASN	4.2
1	A	122	ASN	4.1
1	C	125	VAL	3.9
1	B	82	ASP	3.6
1	B	125	VAL	3.4
1	D	125	VAL	3.4
1	C	359	ASP	3.2
1	C	33	LEU	3.2
1	B	5	SER	3.2
1	D	54	GLN	3.2
1	C	347	THR	3.2
1	C	318	GLU	3.1
1	D	216	HIS	3.0
1	A	125	VAL	3.0
1	C	116	VAL	2.9
1	A	65	GLU	2.9
1	B	363	ARG	2.9

Continued on next page...

Continued from previous page...

Mol	Chain	Res	Type	RSRZ
1	A	290	ASP	2.9
1	B	124	LYS	2.9
1	C	124	LYS	2.9
1	B	316	GLY	2.8
1	A	82	ASP	2.8
1	C	317	ASP	2.8
1	D	122	ASN	2.8
1	C	363	ARG	2.6
1	D	183	GLU	2.6
1	B	45	GLU	2.5
1	B	123	ARG	2.5
1	C	216	HIS	2.5
1	A	123	ARG	2.5
1	C	267	PRO	2.4
1	C	284	VAL	2.4
1	C	319	ARG	2.4
1	B	359	ASP	2.4
1	D	224	ILE	2.4
1	A	363	ARG	2.4
1	A	54	GLN	2.3
1	D	317	ASP	2.3
1	A	153	GLU	2.3
1	D	123	ARG	2.2
1	D	294	LYS	2.2
1	A	117	PRO	2.2
1	A	69	GLN	2.2
1	D	237	ARG	2.2
1	A	337	ASP	2.1
1	C	36	GLY	2.1
1	A	284	VAL	2.1
1	B	318	GLU	2.1
1	C	337	ASP	2.1
1	A	251	ILE	2.1
1	B	347	THR	2.1
1	C	322	ARG	2.1
1	D	65	GLU	2.1
1	D	315	GLN	2.1
1	B	65	GLU	2.0
1	A	267	PRO	2.0
1	D	319	ARG	2.0

6.2 Non-standard residues in protein, DNA, RNA chains [i](#)

There are no non-standard protein/DNA/RNA residues in this entry.

6.3 Carbohydrates [i](#)

There are no carbohydrates in this entry.

6.4 Ligands [i](#)

In the following table, the Atoms column lists the number of modelled atoms in the group and the number defined in the chemical component dictionary. LLDF column lists the quality of electron density of the group with respect to its neighbouring residues in protein, DNA or RNA chains. The B-factors column lists the minimum, median, 95th percentile and maximum values of B factors of atoms in the group. The column labelled 'Q< 0.9' lists the number of atoms with occupancy less than 0.9.

Mol	Type	Chain	Res	Atoms	RSCC	RSR	LLDF	B-factors(Å ²)	Q<0.9
5	NH4	B	403	1/1	0.98	0.36	7.55	17,17,17,17	0
7	DTT	C	409	8/8	0.73	0.29	6.42	56,57,58,58	0
5	NH4	D	403	1/1	0.99	0.26	6.07	8,8,8,8	0
6	SO4	A	406	5/5	0.93	0.25	5.73	43,43,43,44	0
6	SO4	D	406	5/5	0.87	0.25	5.66	48,48,49,49	0
6	SO4	C	408	5/5	0.85	0.25	3.93	64,65,65,65	0
4	OXL	B	402	6/6	0.81	0.21	2.27	23,24,25,25	0
5	NH4	A	404	1/1	0.97	0.23	1.75	13,13,13,13	0
4	OXL	C	403	6/6	0.88	0.20	0.98	24,24,25,26	0
4	OXL	A	403	6/6	0.89	0.19	0.69	22,23,24,24	0
4	OXL	D	402	6/6	0.88	0.18	0.63	19,20,20,21	0
2	MG	C	401	1/1	0.86	0.19	0.47	20,20,20,20	0
2	MG	A	401	1/1	0.95	0.18	0.31	16,16,16,16	0
6	SO4	B	404	5/5	0.94	0.15	0.18	41,41,42,42	0
2	MG	A	405	1/1	0.91	0.15	0.07	17,17,17,17	0
2	MG	C	405	1/1	0.91	0.15	-0.32	16,16,16,16	0
3	NAI	D	401	44/44	0.98	0.11	-0.42	9,11,12,12	0
3	NAI	A	402	44/44	0.98	0.12	-0.43	10,12,13,14	0
7	DTT	D	408	8/8	0.95	0.10	-0.46	23,24,24,24	0
3	NAI	C	402	44/44	0.97	0.12	-0.51	16,19,20,20	0
3	NAI	B	401	44/44	0.97	0.10	-0.86	15,16,17,18	0
5	NH4	C	404	1/1	0.98	0.11	-1.84	14,14,14,14	0
6	SO4	D	404	5/5	0.89	0.30	-	50,51,51,51	0
6	SO4	C	406	5/5	0.88	0.24	-	62,62,62,62	0
6	SO4	D	405	5/5	0.86	0.20	-	79,79,79,79	0

Continued on next page...

Continued from previous page...

Mol	Type	Chain	Res	Atoms	RSCC	RSR	LLDF	B-factors(\AA^2)	Q<0.9
6	SO4	D	407	5/5	0.85	0.37	-	71,71,71,71	0
6	SO4	A	409	5/5	0.92	0.27	-	66,66,66,66	0
6	SO4	C	407	5/5	0.86	0.29	-	65,65,65,65	0
6	SO4	A	408	5/5	0.82	0.23	-	61,62,62,62	0
6	SO4	B	406	5/5	0.82	0.17	-	79,79,79,79	0
6	SO4	B	405	5/5	0.88	0.23	-	62,62,63,63	0
6	SO4	A	407	5/5	0.89	0.18	-	73,73,73,73	0
7	DTT	B	407	8/8	0.72	0.28	-	81,81,81,81	0

6.5 Other polymers [i](#)

There are no such residues in this entry.