



# Full wwPDB X-ray Structure Validation Report ⓘ

Jan 31, 2016 – 07:26 PM GMT

PDB ID : 1FNM  
Title : STRUCTURE OF THERMUS THERMOPHILUS EF-G H573A  
Authors : Laurberg, M.; Kristensen, O.; Martemyanov, K.; Gudkov, A.T.; Nagaev, I.;  
Hughes, D.; Liljas, A.  
Deposited on : 2000-08-22  
Resolution : 2.80 Å(reported)

This is a Full wwPDB X-ray Structure Validation Report for a publicly released PDB entry.  
We welcome your comments at [validation@mail.wwpdb.org](mailto:validation@mail.wwpdb.org)  
A user guide is available at  
<http://wwpdb.org/validation/2016/XrayValidationReportHelp>  
with specific help available everywhere you see the ⓘ symbol.

---

The following versions of software and data (see [references ⓘ](#)) were used in the production of this report:

MolProbity : 4.02b-467  
Mogul : 1.7 (RC4), CSD as536be (2015)  
Xtriage (Phenix) : 1.9-1692  
EDS : rb-20026688  
Percentile statistics : 20151230.v01 (using entries in the PDB archive December 30th 2015)  
Refmac : 5.8.0135  
CCP4 : 6.5.0  
Ideal geometry (proteins) : Engh & Huber (2001)  
Ideal geometry (DNA, RNA) : Parkinson et al. (1996)  
Validation Pipeline (wwPDB-VP) : trunk26865

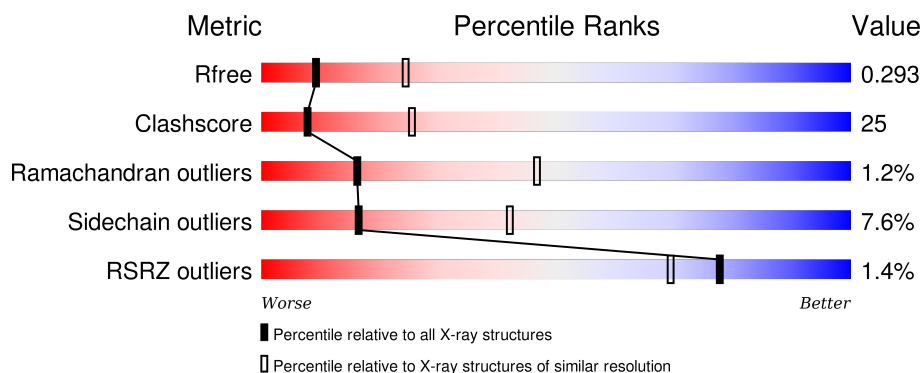
# 1 Overall quality at a glance

The following experimental techniques were used to determine the structure:

## *X-RAY DIFFRACTION*

The reported resolution of this entry is 2.80 Å.

Percentile scores (ranging between 0-100) for global validation metrics of the entry are shown in the following graphic. The table shows the number of entries on which the scores are based.



Metric	Whole archive (#Entries)	Similar resolution (#Entries, resolution range(Å))
$R_{free}$	91344	2393 (2.80-2.80)
Clashscore	102246	2827 (2.80-2.80)
Ramachandran outliers	100387	2782 (2.80-2.80)
Sidechain outliers	100360	2784 (2.80-2.80)
RSRZ outliers	91569	2404 (2.80-2.80)

The table below summarises the geometric issues observed across the polymeric chains and their fit to the electron density. The red, orange, yellow and green segments on the lower bar indicate the fraction of residues that contain outliers for  $\geq 3$ , 2, 1 and 0 types of geometric quality criteria. A grey segment represents the fraction of residues that are not modelled. The numeric value for each fraction is indicated below the corresponding segment, with a dot representing fractions  $\leq 5\%$ . The upper red bar (where present) indicates the fraction of residues that have poor fit to the electron density. The numeric value is given above the bar.

Mol	Chain	Length	Quality of chain
1	A	691	

## 2 Entry composition [i](#)

There are 4 unique types of molecules in this entry. The entry contains 5173 atoms, of which 0 are hydrogens and 0 are deuteriums.

In the tables below, the ZeroOcc column contains the number of atoms modelled with zero occupancy, the AltConf column contains the number of residues with at least one atom in alternate conformation and the Trace column contains the number of residues modelled with at most 2 atoms.

- Molecule 1 is a protein called ELONGATION FACTOR G.

Mol	Chain	Residues	Atoms					ZeroOcc	AltConf	Trace
			Total	C	N	O	S			
1	A	655	5126	3259	874	975	18	0	0	0

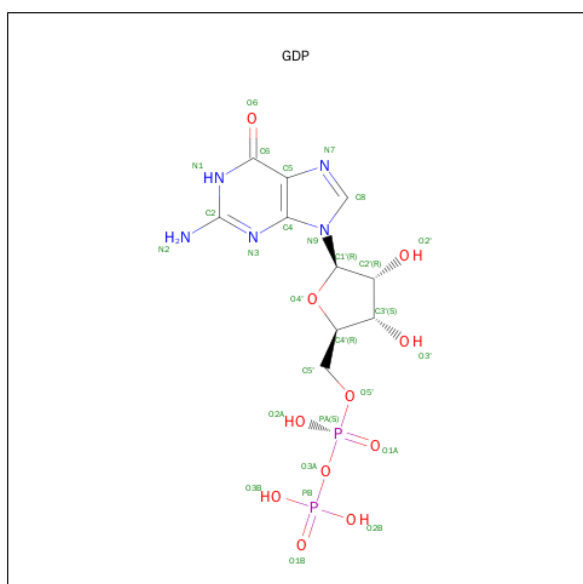
There is a discrepancy between the modelled and reference sequences:

Chain	Residue	Modelled	Actual	Comment	Reference
A	573	ALA	HIS	ENGINEERED	UNP P13551

- Molecule 2 is MAGNESIUM ION (three-letter code: MG) (formula: Mg).

Mol	Chain	Residues	Atoms		ZeroOcc	AltConf
2	A	1	Total	Mg	0	0
			1	1		

- Molecule 3 is GUANOSINE-5'-DIPHOSPHATE (three-letter code: GDP) (formula: C<sub>10</sub>H<sub>15</sub>N<sub>5</sub>O<sub>11</sub>P<sub>2</sub>).



Mol	Chain	Residues	Atoms					ZeroOcc	AltConf
3	A	1	Total	C	N	O	P	0	0
			28	10	5	11	2		

- Molecule 4 is water.

Mol	Chain	Residues	Atoms		ZeroOcc	AltConf
4	A	18	Total	O	0	0
			18	18		



## 4 Data and refinement statistics

Property	Value	Source
Space group	P 21 21 21	Depositor
Cell constants a, b, c, $\alpha$ , $\beta$ , $\gamma$	76.70 Å 85.97 Å 113.37 Å 90.00° 90.00° 90.00°	Depositor
Resolution (Å)	25.00 – 2.80 33.90 – 2.80	Depositor EDS
% Data completeness (in resolution range)	94.8 (25.00-2.80) 94.9 (33.90-2.80)	Depositor EDS
$R_{merge}$	0.10	Depositor
$R_{sym}$	(Not available)	Depositor
$\langle I/\sigma(I) \rangle$ <sup>1</sup>	2.64 (at 2.81 Å)	Xtriage
Refinement program	CNS	Depositor
R, $R_{free}$	0.212 , 0.295 0.211 , 0.293	Depositor DCC
$R_{free}$ test set	654 reflections (3.62%)	DCC
Wilson B-factor (Å <sup>2</sup> )	48.5	Xtriage
Anisotropy	0.363	Xtriage
Bulk solvent $k_{sol}$ (e/Å <sup>3</sup> ), $B_{sol}$ (Å <sup>2</sup> )	0.35 , 61.1	EDS
Estimated twinning fraction	No twinning to report.	Xtriage
L-test for twinning <sup>2</sup>	$\langle  L  \rangle = 0.48$ , $\langle L^2 \rangle = 0.31$	Xtriage
Outliers	0 of 18077 reflections	Xtriage
$F_o, F_c$ correlation	0.93	EDS
Total number of atoms	5173	wwPDB-VP
Average B, all atoms (Å <sup>2</sup> )	47.0	wwPDB-VP

Xtriage's analysis on translational NCS is as follows: *The largest off-origin peak in the Patterson function is 4.56% of the height of the origin peak. No significant pseudotranslation is detected.*

<sup>1</sup>Intensities estimated from amplitudes.

<sup>2</sup>Theoretical values of  $\langle |L| \rangle$ ,  $\langle L^2 \rangle$  for acentric reflections are 0.5, 0.375 respectively for untwinned datasets, and 0.333, 0.2 for perfectly twinned datasets.

## 5 Model quality [i](#)

### 5.1 Standard geometry [i](#)

Bond lengths and bond angles in the following residue types are not validated in this section: GDP, MG

The Z score for a bond length (or angle) is the number of standard deviations the observed value is removed from the expected value. A bond length (or angle) with  $|Z| > 5$  is considered an outlier worth inspection. RMSZ is the root-mean-square of all Z scores of the bond lengths (or angles).

Mol	Chain	Bond lengths		Bond angles	
		RMSZ	$\# Z  > 5$	RMSZ	$\# Z  > 5$
1	A	0.38	0/5222	0.68	3/7073 (0.0%)

There are no bond length outliers.

All (3) bond angle outliers are listed below:

Mol	Chain	Res	Type	Atoms	Z	Observed( $^{\circ}$ )	Ideal( $^{\circ}$ )
1	A	530	VAL	N-CA-C	5.65	126.26	111.00
1	A	532	GLY	N-CA-C	-5.31	99.83	113.10
1	A	166	LEU	CA-CB-CG	5.09	127.01	115.30

There are no chirality outliers.

There are no planarity outliers.

### 5.2 Too-close contacts [i](#)

In the following table, the Non-H and H(model) columns list the number of non-hydrogen atoms and hydrogen atoms in the chain respectively. The H(added) column lists the number of hydrogen atoms added and optimized by MolProbity. The Clashes column lists the number of clashes within the asymmetric unit, whereas Symm-Clashes lists symmetry related clashes.

Mol	Chain	Non-H	H(model)	H(added)	Clashes	Symm-Clashes
1	A	5126	0	5186	259	0
2	A	1	0	0	0	0
3	A	28	0	12	1	0
4	A	18	0	0	1	0
All	All	5173	0	5198	259	0

The all-atom clashscore is defined as the number of clashes found per 1000 atoms (including hydrogen atoms). The all-atom clashscore for this structure is 25.

All (259) close contacts within the same asymmetric unit are listed below, sorted by their clash magnitude.

Atom-1	Atom-2	Interatomic distance (Å)	Clash overlap (Å)
1:A:142:THR:HA	1:A:171:GLU:HG2	1.50	0.91
1:A:137:ASN:HD21	1:A:263:ALA:H	1.20	0.88
1:A:165:GLN:HE21	1:A:260:LEU:H	1.24	0.84
1:A:415:PRO:HG3	1:A:421:GLN:HG2	1.60	0.84
1:A:238:THR:HG22	1:A:241:GLU:H	1.44	0.83
1:A:316:ILE:HD12	1:A:324:ARG:HH21	1.46	0.81
1:A:413:ILE:HD13	1:A:451:ILE:HD11	1.63	0.79
1:A:165:GLN:HE21	1:A:260:LEU:HD13	1.47	0.79
1:A:531:GLY:H	1:A:533:VAL:HG23	1.48	0.78
1:A:321:TYR:O	1:A:322:VAL:HG13	1.86	0.75
1:A:13:ARG:HH11	1:A:277:VAL:HA	1.51	0.75
1:A:165:GLN:NE2	1:A:260:LEU:H	1.84	0.74
1:A:166:LEU:HD22	1:A:180:VAL:HG11	1.69	0.74
1:A:545:GLY:HA2	1:A:583:LYS:HE3	1.70	0.73
1:A:621:ILE:HD11	1:A:643:ILE:HD13	1.69	0.72
1:A:169:GLY:HA3	1:A:173:THR:O	1.89	0.72
1:A:536:LYS:HD2	1:A:537:GLU:N	2.05	0.71
1:A:321:TYR:O	1:A:322:VAL:HG22	1.91	0.70
1:A:405:PRO:HB2	1:A:454:MET:HG2	1.72	0.70
1:A:424:LEU:HD13	1:A:472:VAL:HG11	1.74	0.70
1:A:536:LYS:HD2	1:A:537:GLU:H	1.57	0.69
1:A:627:ARG:HD2	1:A:651:GLU:O	1.91	0.69
1:A:467:LYS:O	1:A:471:LYS:HA	1.91	0.69
1:A:238:THR:HG23	1:A:240:GLU:OE2	1.93	0.69
1:A:114:VAL:HG12	1:A:152:THR:OG1	1.92	0.68
1:A:539:ILE:O	1:A:542:VAL:HG12	1.94	0.68
1:A:423:LYS:HG3	1:A:472:VAL:HG22	1.76	0.68
1:A:607:ARG:HH22	1:A:644:ARG:HE	1.41	0.67
1:A:627:ARG:HH21	1:A:655:TYR:HD1	1.43	0.67
1:A:142:THR:HA	1:A:171:GLU:CG	2.23	0.66
1:A:517:LEU:HD13	1:A:564:LYS:HB2	1.77	0.66
1:A:13:ARG:NH1	1:A:277:VAL:O	2.29	0.66
1:A:110:SER:HB3	1:A:139:MET:CE	2.27	0.65
1:A:546:ILE:O	1:A:550:MET:HG3	1.96	0.65
1:A:637:ARG:HH11	1:A:637:ARG:HG3	1.61	0.64
1:A:422:GLU:O	1:A:426:GLN:HG2	1.98	0.64
1:A:114:VAL:HG12	1:A:152:THR:CB	2.28	0.64
1:A:345:THR:O	1:A:346:LYS:HG3	1.97	0.64
1:A:513:LYS:HG3	1:A:568:TYR:CE1	2.33	0.63
1:A:92:ILE:HG23	1:A:93:GLU:N	2.14	0.63

*Continued on next page...*



*Continued from previous page...*

Atom-1	Atom-2	Interatomic distance (Å)	Clash overlap (Å)
1:A:607:ARG:NH2	1:A:644:ARG:HE	1.97	0.63
1:A:20:HIS:HD2	1:A:117:GLN:H	1.46	0.63
1:A:9:LEU:HD13	1:A:284:LEU:HD13	1.80	0.62
1:A:166:LEU:HD22	1:A:180:VAL:CG1	2.28	0.62
1:A:316:ILE:HD13	1:A:326:THR:HB	1.81	0.62
1:A:95:GLU:HB3	1:A:128:TYR:OH	1.99	0.62
1:A:129:LYS:HB3	1:A:253:LEU:HD21	1.82	0.62
1:A:19:ALA:HB2	1:A:107:VAL:HB	1.82	0.62
1:A:413:ILE:HD13	1:A:451:ILE:CD1	2.29	0.61
1:A:105:ILE:HG12	1:A:133:ILE:HD11	1.83	0.61
1:A:288:PRO:HG2	1:A:300:GLU:HG2	1.81	0.61
1:A:462:ILE:O	1:A:466:LEU:HD13	2.00	0.61
1:A:445:GLU:HG3	1:A:446:THR:H	1.66	0.61
1:A:405:PRO:HG3	1:A:437:THR:HB	1.83	0.61
1:A:427:ALA:HB1	1:A:470:PHE:CD2	2.37	0.60
1:A:294:PRO:HD3	1:A:396:ARG:O	2.01	0.59
1:A:35:TYR:OH	1:A:193:GLY:HA3	2.03	0.59
1:A:181:LEU:HD12	1:A:181:LEU:O	2.02	0.59
1:A:619:ASP:OD2	1:A:619:ASP:N	2.36	0.59
1:A:621:ILE:CD1	1:A:643:ILE:HD13	2.31	0.59
1:A:409:ILE:HG13	1:A:455:GLY:HA2	1.85	0.59
1:A:684:GLN:O	1:A:688:ILE:HG13	2.03	0.58
1:A:404:VAL:HG13	1:A:405:PRO:HD2	1.86	0.58
1:A:20:HIS:CD2	1:A:117:GLN:HB2	2.38	0.58
1:A:445:GLU:HG3	1:A:446:THR:N	2.18	0.58
1:A:137:ASN:ND2	1:A:263:ALA:H	1.95	0.58
1:A:682:GLN:HG3	1:A:686:LYS:HE3	1.86	0.58
1:A:238:THR:HG22	1:A:241:GLU:N	2.16	0.58
1:A:213:HIS:O	1:A:217:VAL:HG23	2.03	0.58
1:A:391:GLY:O	1:A:392:GLU:HB3	2.04	0.57
1:A:647:VAL:HG21	1:A:652:MET:SD	2.45	0.57
1:A:188:TYR:CE1	1:A:196:ILE:HG12	2.40	0.57
1:A:17:ILE:HD12	1:A:17:ILE:N	2.20	0.56
1:A:542:VAL:O	1:A:546:ILE:HG13	2.04	0.56
1:A:190:ASN:HD22	1:A:190:ASN:C	2.10	0.56
1:A:506:GLN:NE2	1:A:578:SER:OG	2.38	0.56
1:A:32:ILE:HG23	1:A:273:LEU:HD11	1.88	0.56
1:A:114:VAL:HG12	1:A:152:THR:HB	1.87	0.55
1:A:625:ASN:HD21	1:A:631:ILE:HD13	1.71	0.55
1:A:110:SER:HB3	1:A:139:MET:HE3	1.87	0.55
1:A:449:THR:O	1:A:450:ILE:HD13	2.07	0.55

*Continued on next page...*

*Continued from previous page...*

Atom-1	Atom-2	Interatomic distance (Å)	Clash overlap (Å)
1:A:329:ARG:HH21	1:A:372:GLY:HA2	1.71	0.55
1:A:363:ARG:HG3	1:A:363:ARG:HH11	1.71	0.55
1:A:170:ARG:HG2	1:A:170:ARG:HH11	1.73	0.54
1:A:417:THR:O	1:A:419:ALA:N	2.39	0.54
1:A:238:THR:HB	1:A:241:GLU:OE1	2.07	0.54
1:A:648:PRO:HG2	1:A:651:GLU:CG	2.37	0.54
1:A:602:LEU:HD23	1:A:678:GLU:HA	1.89	0.54
1:A:417:THR:C	1:A:419:ALA:H	2.11	0.54
1:A:391:GLY:C	1:A:393:ASP:H	2.11	0.53
1:A:137:ASN:ND2	1:A:138:LYS:H	2.06	0.53
1:A:165:GLN:NE2	1:A:260:LEU:HD13	2.21	0.53
1:A:316:ILE:CD1	1:A:326:THR:HB	2.38	0.53
1:A:85:PRO:HG2	1:A:94:VAL:CG2	2.39	0.53
1:A:101:LEU:C	1:A:101:LEU:HD12	2.29	0.53
1:A:425:SER:HA	1:A:428:LEU:HD12	1.90	0.53
1:A:160:ARG:HD3	1:A:255:ILE:HG22	1.91	0.53
1:A:115:GLU:HB3	1:A:116:PRO:HD2	1.90	0.52
1:A:546:ILE:HG23	1:A:590:ILE:HG12	1.92	0.52
1:A:115:GLU:HB3	1:A:116:PRO:CD	2.40	0.52
1:A:118:SER:O	1:A:121:VAL:HG22	2.10	0.52
1:A:414:GLU:C	1:A:474:ALA:HB1	2.31	0.52
1:A:114:VAL:CG1	1:A:152:THR:HB	2.40	0.51
1:A:550:MET:SD	1:A:563:ILE:HD11	2.49	0.51
1:A:431:LEU:HD11	1:A:465:ARG:HD3	1.93	0.51
1:A:636:PRO:HD3	1:A:641:GLN:HE22	1.76	0.51
1:A:534:ILE:HD12	1:A:567:LEU:HD11	1.93	0.51
1:A:415:PRO:CG	1:A:421:GLN:HG2	2.35	0.51
1:A:454:MET:H	1:A:458:HIS:HD2	1.59	0.51
1:A:90:PHE:O	1:A:94:VAL:HG23	2.11	0.51
1:A:8:ASP:OD1	1:A:10:LYS:HE2	2.11	0.50
1:A:519:ARG:HA	1:A:519:ARG:HH11	1.76	0.50
1:A:308:PRO:HB2	1:A:394:ALA:HB1	1.92	0.50
1:A:519:ARG:HD3	1:A:562:ASP:OD1	2.12	0.50
1:A:182:ARG:HB2	1:A:184:LYS:HD2	1.93	0.50
1:A:335:LEU:HD11	1:A:341:VAL:HG11	1.94	0.49
1:A:85:PRO:HG2	1:A:94:VAL:N	2.27	0.49
1:A:384:ILE:HD13	1:A:436:PRO:HG3	1.94	0.49
1:A:85:PRO:HG2	1:A:94:VAL:CA	2.43	0.49
1:A:449:THR:C	1:A:450:ILE:HD13	2.33	0.49
1:A:34:TYR:CZ	1:A:38:ARG:HD3	2.48	0.49
1:A:607:ARG:HH21	1:A:644:ARG:HH21	1.60	0.49

*Continued on next page...*

*Continued from previous page...*

Atom-1	Atom-2	Interatomic distance (Å)	Clash overlap (Å)
1:A:607:ARG:NH2	1:A:644:ARG:HH21	2.10	0.49
1:A:658:ASP:O	1:A:661:SER:HB3	2.13	0.49
1:A:166:LEU:CD2	1:A:180:VAL:HG11	2.41	0.49
1:A:536:LYS:HD2	1:A:537:GLU:HG3	1.95	0.49
1:A:85:PRO:HG3	1:A:93:GLU:HB3	1.95	0.49
1:A:87:HIS:HB3	1:A:90:PHE:CE1	2.48	0.48
1:A:328:ILE:HD13	1:A:328:ILE:O	2.13	0.48
1:A:291:GLY:O	1:A:299:VAL:N	2.45	0.48
1:A:417:THR:O	1:A:418:LYS:HB2	2.13	0.48
1:A:312:LEU:HD23	1:A:399:LEU:HB2	1.96	0.48
1:A:510:VAL:HG11	1:A:542:VAL:HG21	1.95	0.48
1:A:344:THR:C	1:A:346:LYS:H	2.17	0.48
1:A:13:ARG:HH11	1:A:277:VAL:CA	2.23	0.48
1:A:181:LEU:HD12	1:A:181:LEU:C	2.34	0.47
1:A:122:TRP:CE3	1:A:157:LEU:HD13	2.49	0.47
1:A:361:ASN:O	1:A:362:HIS:HB3	2.14	0.47
1:A:122:TRP:CD2	1:A:157:LEU:HD13	2.49	0.47
1:A:443:HIS:HB3	1:A:446:THR:OG1	2.13	0.47
1:A:89:ASP:O	1:A:91:THR:N	2.44	0.47
1:A:114:VAL:HG13	1:A:114:VAL:O	2.15	0.47
1:A:139:MET:HA	1:A:139:MET:HE2	1.97	0.47
1:A:587:SER:O	1:A:591:LYS:HG2	2.15	0.47
1:A:318:ALA:HA	1:A:324:ARG:HA	1.97	0.47
1:A:99:ARG:HD3	4:A:1014:HOH:O	2.15	0.47
1:A:146:LEU:O	1:A:150:ILE:HG12	2.14	0.47
1:A:110:SER:CB	1:A:139:MET:HE2	2.45	0.47
1:A:92:ILE:CG2	1:A:93:GLU:N	2.78	0.47
1:A:384:ILE:CD1	1:A:436:PRO:HG3	2.45	0.47
1:A:264:LEU:O	1:A:264:LEU:HD23	2.15	0.47
1:A:9:LEU:O	1:A:11:ARG:N	2.48	0.46
1:A:555:LEU:HD21	1:A:599:PRO:HG2	1.98	0.46
1:A:196:ILE:HD13	1:A:197:ARG:N	2.31	0.46
1:A:363:ARG:HG3	1:A:363:ARG:NH1	2.31	0.46
1:A:316:ILE:HD12	1:A:324:ARG:NH2	2.23	0.46
1:A:138:LYS:HG2	3:A:900:GDP:C6	2.50	0.46
1:A:631:ILE:N	1:A:631:ILE:HD12	2.31	0.46
1:A:415:PRO:HA	1:A:474:ALA:HB2	1.97	0.46
1:A:637:ARG:HG3	1:A:637:ARG:NH1	2.29	0.45
1:A:458:HIS:CE1	1:A:462:ILE:HD11	2.51	0.45
1:A:110:SER:OG	1:A:136:ALA:HB1	2.16	0.45
1:A:636:PRO:HD3	1:A:641:GLN:NE2	2.31	0.45

*Continued on next page...*

*Continued from previous page...*

Atom-1	Atom-2	Interatomic distance (Å)	Clash overlap (Å)
1:A:319:ASP:HB2	1:A:325:LEU:HD12	1.98	0.45
1:A:609:GLU:HB2	1:A:670:VAL:CG2	2.46	0.45
1:A:633:GLY:HA2	1:A:634:MET:HE1	1.98	0.45
1:A:238:THR:HG22	1:A:241:GLU:HG3	1.99	0.45
1:A:345:THR:HG22	1:A:345:THR:O	2.17	0.45
1:A:461:ILE:O	1:A:465:ARG:HB2	2.17	0.45
1:A:608:VAL:HG12	1:A:610:VAL:HG23	1.99	0.45
1:A:493:VAL:HG11	1:A:592:GLU:HG3	1.99	0.45
1:A:519:ARG:NH1	1:A:519:ARG:HA	2.32	0.45
1:A:418:LYS:HA	1:A:421:GLN:CB	2.47	0.44
1:A:413:ILE:CD1	1:A:451:ILE:HD11	2.40	0.44
1:A:403:GLU:HG2	1:A:404:VAL:N	2.31	0.44
1:A:438:PHE:HB2	1:A:452:SER:O	2.17	0.44
1:A:606:MET:HB3	1:A:671:MET:HG3	1.98	0.44
1:A:348:ARG:HH21	1:A:350:GLU:HA	1.83	0.44
1:A:110:SER:CB	1:A:139:MET:CE	2.95	0.44
1:A:406:GLU:O	1:A:408:VAL:HG13	2.17	0.44
1:A:82:ILE:HG12	1:A:100:VAL:HG12	1.99	0.44
1:A:680:PRO:HD2	1:A:683:VAL:HG21	2.00	0.44
1:A:409:ILE:O	1:A:452:SER:HA	2.18	0.44
1:A:633:GLY:HA2	1:A:634:MET:CE	2.46	0.44
1:A:20:HIS:CD2	1:A:117:GLN:H	2.31	0.44
1:A:269:VAL:O	1:A:273:LEU:HD22	2.18	0.44
1:A:28:THR:O	1:A:32:ILE:HG13	2.17	0.44
1:A:85:PRO:HG2	1:A:94:VAL:HA	1.99	0.44
1:A:616:TYR:HA	1:A:619:ASP:OD1	2.18	0.44
1:A:487:ILE:HA	1:A:599:PRO:HA	1.99	0.44
1:A:507:TYR:C	1:A:507:TYR:CD1	2.91	0.44
1:A:348:ARG:HH11	1:A:382:GLU:HG3	1.82	0.44
1:A:627:ARG:NH2	1:A:655:TYR:HD1	2.13	0.44
1:A:276:VAL:O	1:A:280:LEU:HB2	2.18	0.44
1:A:288:PRO:HB2	1:A:301:ILE:O	2.18	0.43
1:A:324:ARG:NH2	1:A:383:THR:O	2.52	0.43
1:A:114:VAL:HG22	1:A:114:VAL:O	2.17	0.43
1:A:252:ASP:O	1:A:253:LEU:HB2	2.18	0.43
1:A:321:TYR:O	1:A:322:VAL:CG1	2.62	0.43
1:A:280:LEU:HD12	1:A:280:LEU:HA	1.75	0.43
1:A:487:ILE:CG2	1:A:594:VAL:HA	2.47	0.43
1:A:355:LEU:HD13	1:A:369:LEU:HD22	2.00	0.43
1:A:481:VAL:HB	1:A:649:LEU:HD23	1.99	0.43
1:A:88:VAL:HG12	1:A:121:VAL:HG12	2.00	0.43

*Continued on next page...*

*Continued from previous page...*

Atom-1	Atom-2	Interatomic distance (Å)	Clash overlap (Å)
1:A:627:ARG:O	1:A:651:GLU:HG3	2.18	0.43
1:A:92:ILE:HG23	1:A:93:GLU:H	1.81	0.43
1:A:414:GLU:O	1:A:474:ALA:HB1	2.19	0.43
1:A:85:PRO:HG2	1:A:94:VAL:HG22	2.01	0.43
1:A:20:HIS:CE1	1:A:21:ILE:HG22	2.54	0.43
1:A:185:ALA:HB3	1:A:199:ILE:O	2.19	0.43
1:A:417:THR:C	1:A:419:ALA:N	2.72	0.42
1:A:317:MET:O	1:A:325:LEU:N	2.51	0.42
1:A:546:ILE:HD13	1:A:565:VAL:HG11	2.01	0.42
1:A:324:ARG:HG3	1:A:324:ARG:O	2.20	0.42
1:A:203:GLU:HA	1:A:206:LEU:HB2	2.01	0.42
1:A:344:THR:HG21	1:A:396:ARG:HA	2.02	0.42
1:A:8:ASP:O	1:A:9:LEU:C	2.58	0.42
1:A:682:GLN:HG3	1:A:686:LYS:CE	2.49	0.42
1:A:186:TYR:HB3	1:A:196:ILE:HD11	2.01	0.42
1:A:459:LEU:O	1:A:463:VAL:HG23	2.20	0.42
1:A:442:THR:HG23	1:A:447:GLY:O	2.20	0.42
1:A:416:LYS:HG2	1:A:474:ALA:HA	2.02	0.42
1:A:345:THR:C	1:A:346:LYS:HG3	2.39	0.42
1:A:9:LEU:HD22	1:A:283:PRO:HB2	2.02	0.42
1:A:454:MET:H	1:A:458:HIS:CD2	2.38	0.42
1:A:427:ALA:HB1	1:A:470:PHE:CG	2.55	0.42
1:A:409:ILE:HA	1:A:480:GLN:O	2.20	0.42
1:A:308:PRO:HB2	1:A:394:ALA:CB	2.50	0.42
1:A:530:VAL:O	1:A:530:VAL:CG1	2.63	0.42
1:A:321:TYR:O	1:A:322:VAL:CG2	2.65	0.41
1:A:345:THR:HG21	1:A:387:ASP:OD1	2.20	0.41
1:A:302:HIS:O	1:A:332:SER:HB3	2.20	0.41
1:A:611:THR:OG1	1:A:642:VAL:HG22	2.20	0.41
1:A:301:ILE:HD12	1:A:399:LEU:HD11	2.03	0.41
1:A:100:VAL:HG21	1:A:314:PHE:CD2	2.55	0.41
1:A:13:ARG:HD3	1:A:276:VAL:O	2.21	0.41
1:A:537:GLU:HG3	1:A:537:GLU:H	1.58	0.41
1:A:156:ARG:NH2	1:A:666:ARG:HG2	2.36	0.41
1:A:648:PRO:HG2	1:A:651:GLU:HG3	2.02	0.41
1:A:535:PRO:HD3	1:A:572:TYR:CD1	2.55	0.41
1:A:327:PHE:CE1	1:A:376:ALA:HB2	2.56	0.41
1:A:350:GLU:OE2	1:A:383:THR:OG1	2.32	0.41
1:A:583:LYS:HE2	1:A:583:LYS:C	2.41	0.41
1:A:539:ILE:N	1:A:540:PRO:HD2	2.36	0.41
1:A:438:PHE:O	1:A:439:ARG:HD2	2.21	0.41

*Continued on next page...*

Continued from previous page...

Atom-1	Atom-2	Interatomic distance (Å)	Clash overlap (Å)
1:A:329:ARG:HD2	1:A:374:LEU:HG	2.03	0.41
1:A:88:VAL:CG1	1:A:121:VAL:HG12	2.50	0.41
1:A:388:THR:HG21	1:A:397:VAL:O	2.21	0.41
1:A:282:SER:C	1:A:284:LEU:H	2.25	0.40
1:A:609:GLU:HB2	1:A:670:VAL:HG22	2.04	0.40
1:A:546:ILE:HG23	1:A:590:ILE:CG1	2.51	0.40
1:A:116:PRO:O	1:A:119:GLU:HB3	2.21	0.40
1:A:398:ILE:HG13	1:A:398:ILE:O	2.21	0.40
1:A:356:LEU:HB2	1:A:358:MET:CE	2.52	0.40
1:A:579:GLU:O	1:A:583:LYS:HB2	2.21	0.40
1:A:177:ILE:HD12	1:A:271:LEU:HD12	2.03	0.40
1:A:541:ALA:O	1:A:583:LYS:HA	2.21	0.40
1:A:648:PRO:HG2	1:A:651:GLU:HG2	2.03	0.40
1:A:193:GLY:CA	1:A:266:ASN:HB3	2.52	0.40

There are no symmetry-related clashes.

## 5.3 Torsion angles [i](#)

### 5.3.1 Protein backbone [i](#)

In the following table, the Percentiles column shows the percent Ramachandran outliers of the chain as a percentile score with respect to all X-ray entries followed by that with respect to entries of similar resolution.

The Analysed column shows the number of residues for which the backbone conformation was analysed, and the total number of residues.

Mol	Chain	Analysed	Favoured	Allowed	Outliers	Percentiles	
1	A	651/691 (94%)	592 (91%)	51 (8%)	8 (1%)	16	47

All (8) Ramachandran outliers are listed below:

Mol	Chain	Res	Type
1	A	322	VAL
1	A	10	LYS
1	A	403	GLU
1	A	444	PRO
1	A	69	VAL
1	A	203	GLU
1	A	554	PRO

Continued on next page...

*Continued from previous page...*

Mol	Chain	Res	Type
1	A	391	GLY

### 5.3.2 Protein sidechains ⓘ

In the following table, the Percentiles column shows the percent sidechain outliers of the chain as a percentile score with respect to all X-ray entries followed by that with respect to entries of similar resolution.

The Analysed column shows the number of residues for which the sidechain conformation was analysed, and the total number of residues.

Mol	Chain	Analysed	Rotameric	Outliers	Percentiles	
1	A	553/581 (95%)	511 (92%)	42 (8%)	16	42

All (42) residues with a non-rotameric sidechain are listed below:

Mol	Chain	Res	Type
1	A	33	LEU
1	A	100	VAL
1	A	162	VAL
1	A	166	LEU
1	A	167	PRO
1	A	170	ARG
1	A	171	GLU
1	A	181	LEU
1	A	190	ASN
1	A	196	ILE
1	A	203	GLU
1	A	232	LEU
1	A	238	THR
1	A	253	LEU
1	A	260	LEU
1	A	273	LEU
1	A	280	LEU
1	A	284	LEU
1	A	315	LYS
1	A	321	TYR
1	A	326	THR
1	A	328	ILE
1	A	336	THR
1	A	352	VAL
1	A	369	LEU

*Continued on next page...*

*Continued from previous page...*

Mol	Chain	Res	Type
1	A	373	ASP
1	A	377	VAL
1	A	385	THR
1	A	389	LEU
1	A	403	GLU
1	A	416	LYS
1	A	420	ASP
1	A	461	ILE
1	A	473	ASP
1	A	536	LYS
1	A	614	GLU
1	A	616	TYR
1	A	619	ASP
1	A	634	MET
1	A	647	VAL
1	A	659	LEU
1	A	660	ARG

Some sidechains can be flipped to improve hydrogen bonding and reduce clashes. All (17) such sidechains are listed below:

Mol	Chain	Res	Type
1	A	20	HIS
1	A	137	ASN
1	A	154	GLN
1	A	165	GLN
1	A	208	GLN
1	A	226	ASN
1	A	458	HIS
1	A	475	ASN
1	A	480	GLN
1	A	500	GLN
1	A	506	GLN
1	A	543	GLN
1	A	551	GLN
1	A	625	ASN
1	A	641	GLN
1	A	664	GLN
1	A	677	GLN



### 5.3.3 RNA ⓘ

There are no RNA molecules in this entry.

## 5.4 Non-standard residues in protein, DNA, RNA chains ⓘ

There are no non-standard protein/DNA/RNA residues in this entry.

## 5.5 Carbohydrates ⓘ

There are no carbohydrates in this entry.

## 5.6 Ligand geometry ⓘ

Of 2 ligands modelled in this entry, 1 is monoatomic - leaving 1 for Mogul analysis.

In the following table, the Counts columns list the number of bonds (or angles) for which Mogul statistics could be retrieved, the number of bonds (or angles) that are observed in the model and the number of bonds (or angles) that are defined in the chemical component dictionary. The Link column lists molecule types, if any, to which the group is linked. The Z score for a bond length (or angle) is the number of standard deviations the observed value is removed from the expected value. A bond length (or angle) with  $|Z| > 2$  is considered an outlier worth inspection. RMSZ is the root-mean-square of all Z scores of the bond lengths (or angles).

Mol	Type	Chain	Res	Link	Bond lengths			Bond angles		
					Counts	RMSZ	# $ Z  > 2$	Counts	RMSZ	# $ Z  > 2$
3	GDP	A	900	2	23,30,30	1.30	3 (13%)	30,47,47	2.21	6 (20%)

In the following table, the Chirals column lists the number of chiral outliers, the number of chiral centers analysed, the number of these observed in the model and the number defined in the chemical component dictionary. Similar counts are reported in the Torsion and Rings columns. '-' means no outliers of that kind were identified.

Mol	Type	Chain	Res	Link	Chirals	Torsions	Rings
3	GDP	A	900	2	-	0/12/32/32	0/3/3/3

All (3) bond length outliers are listed below:

Mol	Chain	Res	Type	Atoms	Z	Observed(Å)	Ideal(Å)
3	A	900	GDP	PB-O2B	-2.32	1.46	1.54
3	A	900	GDP	C2-N1	2.36	1.39	1.35
3	A	900	GDP	C6-N1	3.43	1.39	1.33

All (6) bond angle outliers are listed below:

Mol	Chain	Res	Type	Atoms	Z	Observed(°)	Ideal(°)
3	A	900	GDP	C5-C6-N1	-7.29	113.63	123.59
3	A	900	GDP	N3-C2-N1	-3.40	122.26	127.44
3	A	900	GDP	C6-C5-C4	-2.90	117.43	120.90
3	A	900	GDP	O3'-C3'-C4'	-2.14	104.64	111.05
3	A	900	GDP	O3A-PA-O5'	-2.05	97.49	102.94
3	A	900	GDP	C6-N1-C2	6.73	125.28	115.94

There are no chirality outliers.

There are no torsion outliers.

There are no ring outliers.

1 monomer is involved in 1 short contact:

Mol	Chain	Res	Type	Clashes	Symm-Clashes
3	A	900	GDP	1	0

## 5.7 Other polymers [i](#)

There are no such residues in this entry.

## 5.8 Polymer linkage issues [i](#)

There are no chain breaks in this entry.

## 6 Fit of model and data [i](#)

### 6.1 Protein, DNA and RNA chains [i](#)

In the following table, the column labelled ‘#RSRZ> 2’ contains the number (and percentage) of RSRZ outliers, followed by percent RSRZ outliers for the chain as percentile scores relative to all X-ray entries and entries of similar resolution. The OWAB column contains the minimum, median, 95<sup>th</sup> percentile and maximum values of the occupancy-weighted average B-factor per residue. The column labelled ‘Q< 0.9’ lists the number of (and percentage) of residues with an average occupancy less than 0.9.

Mol	Chain	Analysed	<RSRZ>	#RSRZ>2	OWAB(Å <sup>2</sup> )	Q<0.9
1	A	655/691 (94%)	-0.19	9 (1%) 78 69	17, 44, 81, 141	0

All (9) RSRZ outliers are listed below:

Mol	Chain	Res	Type	RSRZ
1	A	320	PRO	3.6
1	A	445	GLU	3.5
1	A	422	GLU	3.1
1	A	633	GLY	2.9
1	A	468	ARG	2.5
1	A	68	ALA	2.4
1	A	446	THR	2.3
1	A	471	LYS	2.2
1	A	617	MET	2.1

### 6.2 Non-standard residues in protein, DNA, RNA chains [i](#)

There are no non-standard protein/DNA/RNA residues in this entry.

### 6.3 Carbohydrates [i](#)

There are no carbohydrates in this entry.

### 6.4 Ligands [i](#)

In the following table, the Atoms column lists the number of modelled atoms in the group and the number defined in the chemical component dictionary. LLDF column lists the quality of electron density of the group with respect to its neighbouring residues in protein, DNA or RNA chains. The B-factors column lists the minimum, median, 95<sup>th</sup> percentile and maximum values of B factors

of atoms in the group. The column labelled 'Q< 0.9' lists the number of atoms with occupancy less than 0.9.

Mol	Type	Chain	Res	Atoms	RSCC	RSR	LLDF	B-factors( $\text{\AA}^2$ )	Q<0.9
3	GDP	A	900	28/28	0.98	0.13	-0.95	32,32,32,32	0
2	MG	A	950	1/1	0.81	0.27	-	46,46,46,46	0

## 6.5 Other polymers [i](#)

There are no such residues in this entry.