



Full wwPDB X-ray Structure Validation Report ⓘ

Jan 31, 2016 – 07:28 PM GMT

PDB ID : 1FQK
Title : CRYSTAL STRUCTURE OF THE HETERODIMERIC COMPLEX OF THE
RGS DOMAIN OF RGS9, AND THE GT/I1 CHIMERA ALPHA SUBUNIT
[(RGS9)-(GT/I1ALPHA)-(GDP)-(ALF4)-(MG2+)]
Authors : Slep, K.C.; Kercher, M.A.; He, W.; Cowan, C.W.; Wensel, T.G.; Sigler, P.B.
Deposited on : 2000-09-05
Resolution : 2.30 Å(reported)

This is a Full wwPDB X-ray Structure Validation Report for a publicly released PDB entry.
We welcome your comments at validation@mail.wwpdb.org
A user guide is available at
<http://wwpdb.org/validation/2016/XrayValidationReportHelp>
with specific help available everywhere you see the ⓘ symbol.

The following versions of software and data (see [references ⓘ](#)) were used in the production of this report:

MolProbity : 4.02b-467
Mogul : 1.7 (RC4), CSD as536be (2015)
Xtriage (Phenix) : 1.9-1692
EDS : rb-20026688
Percentile statistics : 20151230.v01 (using entries in the PDB archive December 30th 2015)
Refmac : 5.8.0135
CCP4 : 6.5.0
Ideal geometry (proteins) : Engh & Huber (2001)
Ideal geometry (DNA, RNA) : Parkinson et al. (1996)
Validation Pipeline (wwPDB-VP) : trunk26865

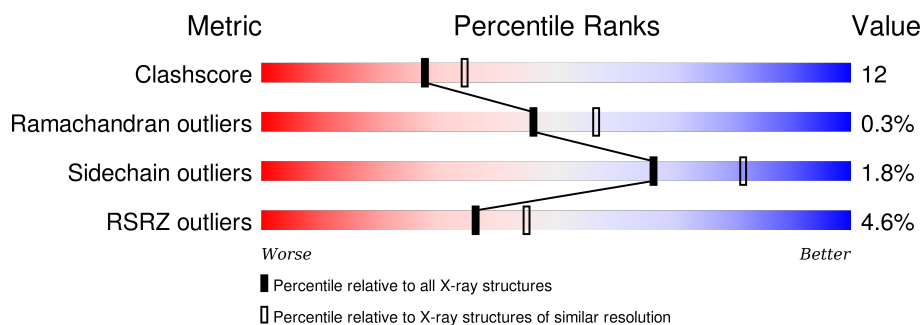
1 Overall quality at a glance

The following experimental techniques were used to determine the structure:

X-RAY DIFFRACTION

The reported resolution of this entry is 2.30 Å.

Percentile scores (ranging between 0-100) for global validation metrics of the entry are shown in the following graphic. The table shows the number of entries on which the scores are based.



Metric	Whole archive (#Entries)	Similar resolution (#Entries, resolution range(Å))
Clashscore	102246	4452 (2.30-2.30)
Ramachandran outliers	100387	4410 (2.30-2.30)
Sidechain outliers	100360	4409 (2.30-2.30)
RSRZ outliers	91569	3857 (2.30-2.30)

The table below summarises the geometric issues observed across the polymeric chains and their fit to the electron density. The red, orange, yellow and green segments on the lower bar indicate the fraction of residues that contain outliers for ≥ 3 , 2, 1 and 0 types of geometric quality criteria. A grey segment represents the fraction of residues that are not modelled. The numeric value for each fraction is indicated below the corresponding segment, with a dot representing fractions $\leq 5\%$. The upper red bar (where present) indicates the fraction of residues that have poor fit to the electron density. The numeric value is given above the bar.

Mol	Chain	Length	Quality of chain
1	A	325	<div> <div>4%</div> <div>73%</div> <div>25%</div> <div>.</div> </div>
1	C	325	<div> <div>5%</div> <div>73%</div> <div>23%</div> <div>..</div> </div>
2	B	147	<div> <div>4%</div> <div>67%</div> <div>24%</div> <div>7%</div> </div>
2	D	147	<div> <div>5%</div> <div>75%</div> <div>22%</div> <div>..</div> </div>

The following table lists non-polymeric compounds, carbohydrate monomers and non-standard residues in protein, DNA, RNA chains that are outliers for geometric or electron-density-fit criteria:

Mol	Type	Chain	Res	Chirality	Geometry	Clashes	Electron density
3	MG	A	352	-	-	-	X
3	MG	C	352	-	-	-	X

2 Entry composition

There are 6 unique types of molecules in this entry. The entry contains 7634 atoms, of which 0 are hydrogens and 0 are deuteriums.

In the tables below, the ZeroOcc column contains the number of atoms modelled with zero occupancy, the AltConf column contains the number of residues with at least one atom in alternate conformation and the Trace column contains the number of residues modelled with at most 2 atoms.

- Molecule 1 is a protein called CHIMERA OF GUANINE NUCLEOTIDE-BINDING PROTEIN G(T), ALPHA-1 SUBUNIT AND GUANINE NUCLEOTIDE-BINDING PROTEIN G(I), ALPHA-1 SUBUNIT.

Mol	Chain	Residues	Atoms					ZeroOcc	AltConf	Trace
1	A	318	Total	C	N	O	S	0	0	0
			2564	1626	425	494	19			
1	C	317	Total	C	N	O	S	0	0	0
			2553	1620	421	493	19			

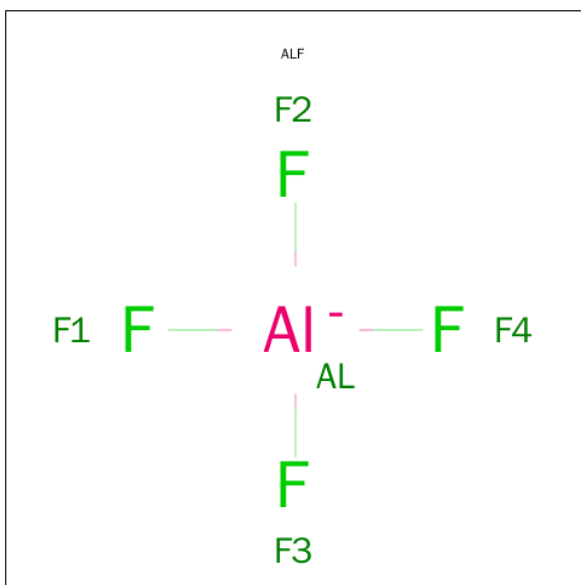
- Molecule 2 is a protein called REGULATOR OF G-PROTEIN SIGNALING 9.

Mol	Chain	Residues	Atoms					ZeroOcc	AltConf	Trace
2	B	136	Total	C	N	O	S	0	0	0
			1135	734	197	198	6			
2	D	143	Total	C	N	O	S	0	0	0
			1198	777	207	208	6			

- Molecule 3 is MAGNESIUM ION (three-letter code: MG) (formula: Mg).

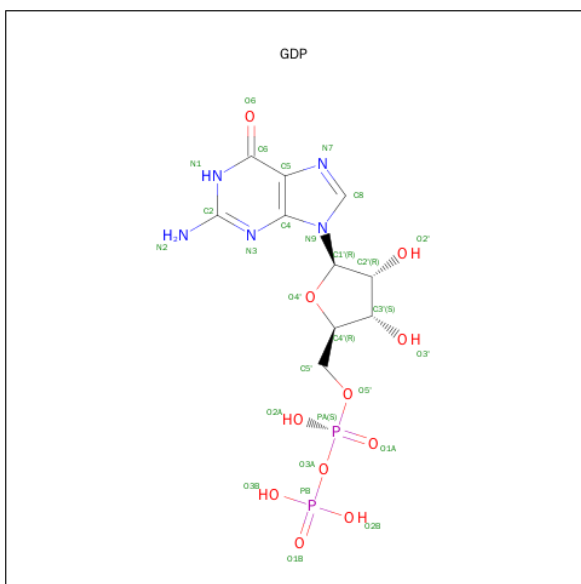
Mol	Chain	Residues	Atoms		ZeroOcc	AltConf
3	A	1	Total	Mg	0	0
			1	1		
3	C	1	Total	Mg	0	0
			1	1		

- Molecule 4 is TETRAFLUOROALUMINATE ION (three-letter code: ALF) (formula: AlF_4).



Mol	Chain	Residues	Atoms			ZeroOcc	AltConf
4	A	1	Total 5	Al 1	F 4	0	0
4	C	1	Total 5	Al 1	F 4	0	0

- Molecule 5 is GUANOSINE-5'-DIPHOSPHATE (three-letter code: GDP) (formula: $\text{C}_{10}\text{H}_{15}\text{N}_5\text{O}_{11}\text{P}_2$).



Mol	Chain	Residues	Atoms				ZeroOcc	AltConf	
5	A	1	Total 28	C 10	N 5	O 11	P 2	0	0

Continued on next page...

Continued from previous page...

Mol	Chain	Residues	Atoms					ZeroOcc	AltConf
5	C	1	Total	C	N	O	P	0	0
			28	10	5	11	2		

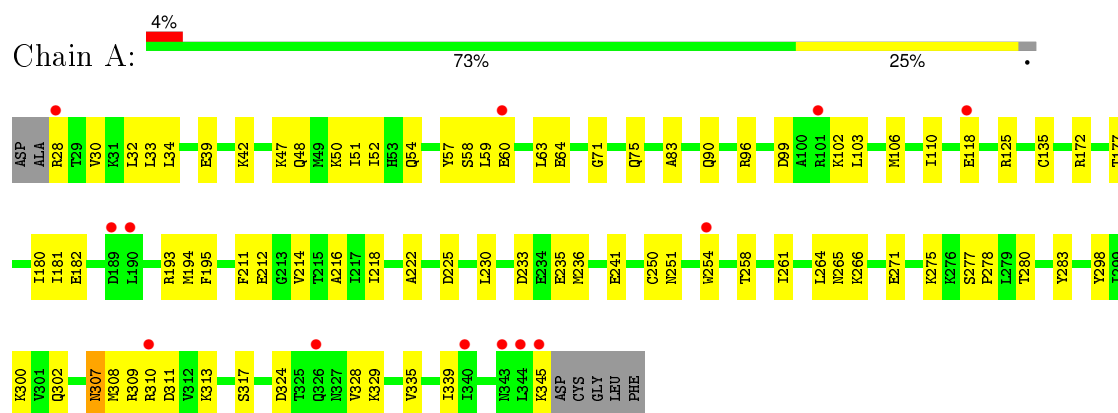
- Molecule 6 is water.

Mol	Chain	Residues	Atoms		ZeroOcc	AltConf
6	A	47	Total	O	0	0
			47	47		
6	B	10	Total	O	0	0
			10	10		
6	C	43	Total	O	0	0
			43	43		
6	D	16	Total	O	0	0
			16	16		

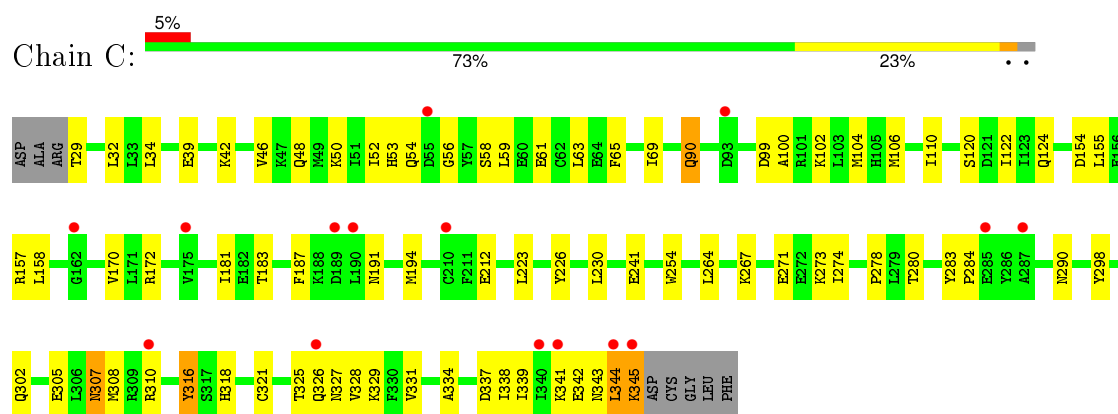
3 Residue-property plots

These plots are drawn for all protein, RNA and DNA chains in the entry. The first graphic for a chain summarises the proportions of errors displayed in the second graphic. The second graphic shows the sequence view annotated by issues in geometry and electron density. Residues are color-coded according to the number of geometric quality criteria for which they contain at least one outlier: green = 0, yellow = 1, orange = 2 and red = 3 or more. A red dot above a residue indicates a poor fit to the electron density ($RSRZ > 2$). Stretches of 2 or more consecutive residues without any outlier are shown as a green connector. Residues present in the sample, but not in the model, are shown in grey.

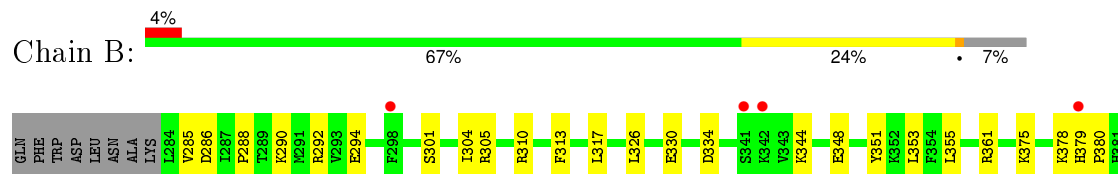
- Molecule 1: CHIMERA OF GUANINE NUCLEOTIDE-BINDING PROTEIN G(T), ALPHA-1 SUBUNIT AND GUANINE NUCLEOTIDE-BINDING PROTEIN G(I), ALPHA-1 SUBUNIT

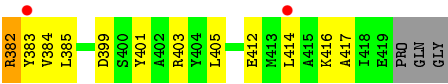


- Molecule 1: CHIMERA OF GUANINE NUCLEOTIDE-BINDING PROTEIN G(T), ALPHA-1 SUBUNIT AND GUANINE NUCLEOTIDE-BINDING PROTEIN G(I), ALPHA-1 SUBUNIT

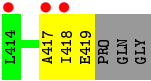
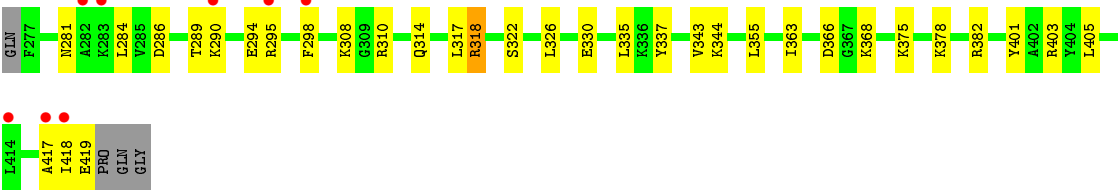


- Molecule 2: REGULATOR OF G-PROTEIN SIGNALING 9





● Molecule 2: REGULATOR OF G-PROTEIN SIGNALING 9



4 Data and refinement statistics

Property	Value	Source
Space group	P 21 21 21	Depositor
Cell constants a, b, c, α , β , γ	96.78Å 115.07Å 136.46Å 90.00° 90.00° 90.00°	Depositor
Resolution (Å)	50.00 – 2.30 43.99 – 2.29	Depositor EDS
% Data completeness (in resolution range)	87.4 (50.00-2.30) 86.9 (43.99-2.29)	Depositor EDS
R_{merge}	0.06	Depositor
R_{sym}	(Not available)	Depositor
$\langle I/\sigma(I) \rangle$ ¹	1.91 (at 2.29Å)	Xtriage
Refinement program	CNS 1.0	Depositor
R, R_{free}	0.231 , 0.268 0.242 , (Not available)	Depositor DCC
R_{free} test set	No test flags present.	DCC
Wilson B-factor (Å ²)	42.6	Xtriage
Anisotropy	0.591	Xtriage
Bulk solvent k_{sol} (e/Å ³), B_{sol} (Å ²)	0.33 , 42.8	EDS
Estimated twinning fraction	No twinning to report.	Xtriage
L-test for twinning ²	$\langle L \rangle = 0.49$, $\langle L^2 \rangle = 0.33$	Xtriage
Outliers	0 of 66526 reflections	Xtriage
F_o, F_c correlation	0.94	EDS
Total number of atoms	7634	wwPDB-VP
Average B, all atoms (Å ²)	65.0	wwPDB-VP

Xtriage's analysis on translational NCS is as follows: *The largest off-origin peak in the Patterson function is 3.27% of the height of the origin peak. No significant pseudotranslation is detected.*

¹Intensities estimated from amplitudes.

²Theoretical values of $\langle |L| \rangle$, $\langle L^2 \rangle$ for acentric reflections are 0.5, 0.375 respectively for untwinned datasets, and 0.333, 0.2 for perfectly twinned datasets.

5 Model quality [i](#)

5.1 Standard geometry [i](#)

Bond lengths and bond angles in the following residue types are not validated in this section: GDP, ALF, MG

The Z score for a bond length (or angle) is the number of standard deviations the observed value is removed from the expected value. A bond length (or angle) with $|Z| > 5$ is considered an outlier worth inspection. RMSZ is the root-mean-square of all Z scores of the bond lengths (or angles).

Mol	Chain	Bond lengths		Bond angles	
		RMSZ	$\# Z > 5$	RMSZ	$\# Z > 5$
1	A	0.39	0/2607	0.62	0/3511
1	C	0.39	0/2596	0.60	0/3497
2	B	0.36	0/1163	0.54	0/1559
2	D	0.43	0/1229	0.58	0/1649
All	All	0.39	0/7595	0.60	0/10216

There are no bond length outliers.

There are no bond angle outliers.

There are no chirality outliers.

There are no planarity outliers.

5.2 Too-close contacts [i](#)

In the following table, the Non-H and H(model) columns list the number of non-hydrogen atoms and hydrogen atoms in the chain respectively. The H(added) column lists the number of hydrogen atoms added and optimized by MolProbity. The Clashes column lists the number of clashes within the asymmetric unit, whereas Symm-Clashes lists symmetry related clashes.

Mol	Chain	Non-H	H(model)	H(added)	Clashes	Symm-Clashes
1	A	2564	0	2552	63	0
1	C	2553	0	2539	62	0
2	B	1135	0	1146	28	0
2	D	1198	0	1204	27	0
3	A	1	0	0	0	0
3	C	1	0	0	0	0
4	A	5	0	0	0	0
4	C	5	0	0	0	0
5	A	28	0	12	4	0

Continued on next page...

Continued from previous page...

Mol	Chain	Non-H	H(model)	H(added)	Clashes	Symm-Clashes
5	C	28	0	12	4	0
6	A	47	0	0	2	0
6	B	10	0	0	1	0
6	C	43	0	0	3	0
6	D	16	0	0	2	0
All	All	7634	0	7465	177	0

The all-atom clashscore is defined as the number of clashes found per 1000 atoms (including hydrogen atoms). The all-atom clashscore for this structure is 12.

All (177) close contacts within the same asymmetric unit are listed below, sorted by their clash magnitude.

Atom-1	Atom-2	Interatomic distance (Å)	Clash overlap (Å)
1:C:52:ILE:HD13	1:C:329:LYS:HB3	1.42	1.02
2:B:290:LYS:HA	2:B:417:ALA:HB1	1.53	0.89
2:D:318:ARG:HB3	2:D:318:ARG:HH11	1.42	0.85
1:C:267:LYS:HG2	1:C:321:CYS:SG	2.22	0.79
2:D:295:ARG:HH11	2:D:295:ARG:HB3	1.49	0.78
1:C:337:ASP:HB3	1:C:341:LYS:NZ	1.97	0.78
2:D:318:ARG:HB3	2:D:318:ARG:NH1	2.00	0.76
2:B:288:PRO:HB3	2:B:292:ARG:HD3	1.68	0.75
1:A:106:MET:O	1:A:110:ILE:HG23	1.89	0.72
2:D:295:ARG:HA	2:D:298:PHE:CD2	2.26	0.70
1:C:298:TYR:O	1:C:302:GLN:HG2	1.91	0.70
1:C:90:GLN:HB3	6:C:390:HOH:O	1.90	0.70
2:D:375:LYS:O	2:D:378:LYS:HG2	1.91	0.69
2:D:401:TYR:CE1	2:D:405:LEU:HD21	2.27	0.69
1:C:212:GLU:HG2	1:C:254:TRP:CZ3	2.27	0.69
2:B:412:GLU:HB3	2:B:416:LYS:HE3	1.75	0.69
1:C:334:ALA:O	1:C:338:ILE:HG13	1.94	0.68
1:A:118:GLU:HB2	6:A:377:HOH:O	1.93	0.68
1:C:106:MET:O	1:C:110:ILE:HG23	1.95	0.67
2:B:294:GLU:HG2	2:B:414:LEU:HD11	1.78	0.65
2:D:335:LEU:HG	6:D:77:HOH:O	1.96	0.65
2:D:290:LYS:HA	2:D:417:ALA:HB1	1.78	0.65
1:C:278:PRO:HA	1:C:290:ASN:OD1	1.97	0.64
2:B:290:LYS:CA	2:B:417:ALA:HB1	2.28	0.64
1:C:172:ARG:NH1	5:C:361:GDP:HN22	1.95	0.63
2:B:310:ARG:HB3	6:B:33:HOH:O	1.98	0.63
2:B:405:LEU:H	2:B:405:LEU:HD22	1.64	0.62
1:C:39:GLU:N	5:C:361:GDP:O3B	2.33	0.62

Continued on next page...

Continued from previous page...

Atom-1	Atom-2	Interatomic distance (Å)	Clash overlap (Å)
1:A:309:ARG:NH2	1:A:311:ASP:HB3	2.15	0.62
1:C:59:LEU:O	1:C:63:LEU:HD23	2.00	0.61
1:A:60:GLU:O	1:A:64:GLU:HG3	1.99	0.61
1:A:32:LEU:HD12	1:A:216:ALA:O	2.00	0.60
1:C:42:LYS:N	5:C:361:GDP:O1B	2.29	0.60
1:C:337:ASP:HB3	1:C:341:LYS:HZ3	1.64	0.60
1:A:258:THR:O	1:A:313:LYS:NZ	2.31	0.59
2:B:382:ARG:HD3	2:B:383:TYR:CE1	2.37	0.59
1:A:182:GLU:HB2	1:A:195:PHE:CE1	2.38	0.59
1:A:58:SER:OG	1:A:60:GLU:HG2	2.02	0.59
1:C:316:TYR:CD1	1:C:316:TYR:N	2.71	0.59
1:A:106:MET:HE1	1:A:118:GLU:HG3	1.86	0.58
2:B:344:LYS:O	2:B:348:GLU:HB2	2.05	0.57
2:B:351:TYR:HA	2:B:355:LEU:HD12	1.86	0.56
1:A:181:ILE:HD12	1:A:181:ILE:N	2.20	0.56
1:C:155:LEU:HA	1:C:158:LEU:HD12	1.87	0.56
1:A:230:LEU:HD11	1:A:241:GLU:CG	2.36	0.56
1:A:310:ARG:HA	1:A:313:LYS:O	2.06	0.55
1:C:337:ASP:HB3	1:C:341:LYS:HZ2	1.67	0.55
1:A:83:ALA:HB3	1:A:135:CYS:SG	2.47	0.55
1:C:223:LEU:HD21	1:C:264:LEU:HB3	1.89	0.54
1:C:29:THR:HG22	1:C:191:ASN:HB2	1.89	0.54
1:A:47:LYS:HG2	1:A:57:TYR:OH	2.08	0.54
2:B:382:ARG:HD3	2:B:383:TYR:HE1	1.72	0.54
1:C:226:TYR:OH	1:C:273:LYS:HG2	2.08	0.54
1:A:48:GLN:O	1:A:52:ILE:HG13	2.07	0.54
1:A:102:LYS:O	1:A:106:MET:HG3	2.08	0.54
1:A:39:GLU:N	5:A:360:GDP:O3B	2.39	0.54
1:A:32:LEU:HD23	1:A:194:MET:CE	2.37	0.53
2:D:326:LEU:O	2:D:330:GLU:HG3	2.08	0.53
1:A:50:LYS:HD3	1:A:57:TYR:CZ	2.43	0.53
2:D:401:TYR:CZ	2:D:405:LEU:HD21	2.42	0.53
1:C:50:LYS:HA	1:C:54:GLN:HB2	1.89	0.53
1:A:59:LEU:O	1:A:63:LEU:HG	2.09	0.53
1:C:345:LYS:HA	1:C:345:LYS:HE3	1.89	0.53
1:A:261:ILE:N	1:A:261:ILE:HD12	2.23	0.52
2:B:290:LYS:O	2:B:294:GLU:HG3	2.09	0.52
1:A:71:GLY:O	1:A:75:GLN:HG2	2.10	0.52
1:C:344:LEU:HD12	1:C:345:LYS:NZ	2.25	0.52
1:C:280:THR:HG22	1:C:284:PRO:HA	1.91	0.52
1:A:280:THR:HA	1:A:283:TYR:O	2.10	0.52

Continued on next page...

Continued from previous page...

Atom-1	Atom-2	Interatomic distance (Å)	Clash overlap (Å)
1:A:230:LEU:HD11	1:A:241:GLU:CD	2.30	0.51
1:C:99:ASP:HB3	1:C:122:ILE:HG23	1.91	0.51
2:B:286:ASP:O	2:B:288:PRO:HD3	2.10	0.51
1:C:230:LEU:HD21	1:C:241:GLU:HG2	1.92	0.51
1:A:106:MET:CE	1:A:118:GLU:HG3	2.41	0.51
1:A:42:LYS:N	5:A:360:GDP:O1B	2.43	0.51
2:D:343:VAL:HG13	2:D:344:LYS:N	2.26	0.51
2:B:285:VAL:HG22	2:B:286:ASP:N	2.27	0.50
1:A:298:TYR:O	1:A:302:GLN:HG2	2.11	0.50
2:D:290:LYS:HE2	2:D:294:GLU:OE1	2.11	0.50
1:C:181:ILE:HD12	1:C:181:ILE:N	2.26	0.50
2:D:281:ASN:HB3	2:D:284:LEU:HG	1.94	0.50
2:D:337:TYR:N	2:D:337:TYR:CD2	2.78	0.50
2:B:301:SER:O	2:B:305:ARG:HG2	2.12	0.50
1:A:177:THR:HA	2:B:399:ASP:OD2	2.12	0.49
1:C:52:ILE:CD1	1:C:329:LYS:HB3	2.29	0.49
2:D:310:ARG:O	2:D:314:GLN:HB2	2.12	0.49
1:A:300:LYS:HE3	1:A:317:SER:OG	2.13	0.49
2:B:313:PHE:CZ	2:B:317:LEU:HD21	2.48	0.49
2:B:401:TYR:CE1	2:B:405:LEU:HD21	2.48	0.48
1:C:181:ILE:HG12	2:D:403:ARG:NE	2.28	0.48
1:C:183:THR:HG22	1:C:194:MET:HB3	1.95	0.48
2:B:310:ARG:HD2	2:B:326:LEU:HD11	1.95	0.48
2:D:317:LEU:HD22	2:D:322:SER:OG	2.13	0.48
1:C:230:LEU:HD11	1:C:241:GLU:CD	2.34	0.48
1:A:222:ALA:HB3	1:A:225:ASP:OD2	2.13	0.48
1:A:32:LEU:HD23	1:A:194:MET:HE2	1.95	0.48
1:A:33:LEU:HD23	1:A:195:PHE:HB2	1.96	0.48
1:A:307:ASN:HD22	1:A:308:MET:N	2.12	0.48
2:D:355:LEU:CD2	2:D:363:ILE:HD11	2.44	0.47
1:A:50:LYS:HA	1:A:54:GLN:HB2	1.97	0.47
2:B:353:LEU:HD11	2:B:361:ARG:HG3	1.96	0.47
2:B:290:LYS:HA	2:B:417:ALA:CB	2.35	0.47
2:D:290:LYS:CA	2:D:417:ALA:HB1	2.44	0.47
1:C:154:ASP:OD2	1:C:157:ARG:NE	2.47	0.47
1:C:120:SER:O	1:C:124:GLN:HG3	2.15	0.47
1:A:180:ILE:C	1:A:181:ILE:HD12	2.35	0.47
1:A:172:ARG:HA	5:A:360:GDP:O2'	2.15	0.47
1:C:316:TYR:HD1	1:C:316:TYR:H	1.58	0.46
2:B:384:VAL:HG13	2:B:385:LEU:HD23	1.96	0.46
1:A:52:ILE:HD13	1:A:329:LYS:HB2	1.98	0.46

Continued on next page...

Continued from previous page...

Atom-1	Atom-2	Interatomic distance (Å)	Clash overlap (Å)
1:C:172:ARG:HA	5:C:361:GDP:O2'	2.16	0.46
1:C:52:ILE:HD13	1:C:329:LYS:CB	2.28	0.46
1:C:52:ILE:HG22	1:C:53:HIS:CD2	2.50	0.46
1:A:212:GLU:HG2	1:A:254:TRP:CZ3	2.51	0.46
1:C:32:LEU:HD22	1:C:194:MET:HE3	1.98	0.46
1:C:307:ASN:HD22	1:C:307:ASN:C	2.19	0.46
1:C:267:LYS:HE3	1:C:321:CYS:SG	2.56	0.45
1:A:30:VAL:HG23	1:A:30:VAL:O	2.16	0.45
1:C:338:ILE:O	1:C:342:GLU:HB2	2.16	0.45
1:C:280:THR:HA	1:C:283:TYR:O	2.16	0.45
1:C:307:ASN:HD22	1:C:308:MET:N	2.15	0.45
1:C:65:PHE:O	1:C:69:ILE:HG13	2.15	0.45
1:A:211:PHE:O	1:A:214:VAL:HG23	2.17	0.45
2:B:375:LYS:O	2:B:378:LYS:HG3	2.17	0.45
1:A:96:ARG:HA	1:A:96:ARG:NE	2.32	0.45
2:D:418:ILE:HG22	2:D:419:GLU:N	2.32	0.45
2:D:286:ASP:HB3	2:D:308:LYS:HE3	1.97	0.45
1:C:271:GLU:O	1:C:274:ILE:HG22	2.17	0.45
1:A:214:VAL:HG12	1:A:258:THR:HG21	1.99	0.44
1:C:32:LEU:HD22	1:C:194:MET:CE	2.48	0.44
2:B:326:LEU:O	2:B:330:GLU:HG3	2.18	0.44
1:A:99:ASP:OD1	1:A:125:ARG:NH1	2.50	0.44
1:C:58:SER:OG	1:C:61:GLU:HG3	2.17	0.44
1:C:100:ALA:O	1:C:104:MET:HG2	2.18	0.44
2:B:403:ARG:HG3	2:B:403:ARG:HH11	1.82	0.44
1:A:102:LYS:NZ	6:A:377:HOH:O	2.50	0.44
1:C:34:LEU:CD1	1:C:46:VAL:HG23	2.48	0.43
1:A:324:ASP:O	1:A:328:VAL:HG23	2.19	0.43
1:C:318:HIS:CD2	1:C:331:VAL:HG13	2.54	0.43
1:A:309:ARG:C	1:A:311:ASP:N	2.72	0.43
1:A:251:ASN:OD1	1:A:308:MET:HG3	2.19	0.43
1:A:335:VAL:O	1:A:339:ILE:HG13	2.18	0.43
2:D:405:LEU:HD22	2:D:405:LEU:N	2.32	0.43
2:D:366:ASP:OD1	2:D:368:LYS:HB3	2.18	0.43
1:A:182:GLU:OE2	1:A:193:ARG:NH1	2.52	0.43
2:B:301:SER:HA	2:B:304:ILE:HG22	2.01	0.43
1:C:65:PHE:CE1	1:C:170:VAL:HG13	2.54	0.43
1:C:181:ILE:HG12	2:D:403:ARG:CZ	2.49	0.42
2:D:355:LEU:HD21	2:D:363:ILE:HD11	2.00	0.42
1:C:305:GLU:HG2	1:C:310:ARG:NH1	2.34	0.42
1:A:271:GLU:O	1:A:275:LYS:HE3	2.19	0.42

Continued on next page...

Continued from previous page...

Atom-1	Atom-2	Interatomic distance (Å)	Clash overlap (Å)
1:A:277:SER:HA	1:A:278:PRO:HD3	1.72	0.42
1:C:339:ILE:O	1:C:343:ASN:HB2	2.18	0.42
2:D:405:LEU:H	2:D:405:LEU:HD22	1.84	0.42
1:A:32:LEU:HD23	1:A:194:MET:HE3	2.02	0.42
1:A:222:ALA:HB3	1:A:225:ASP:CG	2.40	0.42
1:C:345:LYS:HA	1:C:345:LYS:CE	2.50	0.42
2:B:313:PHE:O	2:B:317:LEU:HG	2.20	0.42
1:A:28:ARG:NE	1:A:28:ARG:HA	2.33	0.42
1:A:47:LYS:O	1:A:51:ILE:HG13	2.20	0.42
1:C:48:GLN:HG3	1:C:328:VAL:HG21	2.01	0.42
1:A:309:ARG:C	1:A:311:ASP:H	2.22	0.41
1:C:157:ARG:HH11	1:C:157:ARG:HG2	1.84	0.41
1:A:251:ASN:CG	1:A:308:MET:HG3	2.41	0.41
1:A:34:LEU:HD23	1:A:218:ILE:HB	2.01	0.41
1:C:187:PHE:HB2	6:C:382:HOH:O	2.19	0.41
1:A:106:MET:HB3	1:A:106:MET:HE2	1.96	0.41
1:C:325:THR:O	1:C:327:ASN:N	2.54	0.41
2:B:379:HIS:N	2:B:380:PRO:HD3	2.36	0.41
1:A:265:ASN:O	1:A:266:LYS:HB2	2.21	0.41
1:C:267:LYS:HE3	6:C:392:HOH:O	2.21	0.41
1:A:233:ASP:OD1	1:A:235:GLU:HB2	2.21	0.41
1:C:327:ASN:O	1:C:331:VAL:HG23	2.21	0.40
1:C:102:LYS:HA	1:C:102:LYS:HD2	1.95	0.40
1:A:32:LEU:CD1	1:A:216:ALA:HB3	2.51	0.40
1:A:39:GLU:HA	5:A:360:GDP:O3B	2.22	0.40
2:D:382:ARG:HA	6:D:77:HOH:O	2.21	0.40

There are no symmetry-related clashes.

5.3 Torsion angles [i](#)

5.3.1 Protein backbone [i](#)

In the following table, the Percentiles column shows the percent Ramachandran outliers of the chain as a percentile score with respect to all X-ray entries followed by that with respect to entries of similar resolution.

The Analysed column shows the number of residues for which the backbone conformation was analysed, and the total number of residues.

Mol	Chain	Analysed	Favoured	Allowed	Outliers	Percentiles	
1	A	316/325 (97%)	300 (95%)	16 (5%)	0	100	100
1	C	315/325 (97%)	291 (92%)	22 (7%)	2 (1%)	30	36
2	B	134/147 (91%)	124 (92%)	10 (8%)	0	100	100
2	D	141/147 (96%)	135 (96%)	5 (4%)	1 (1%)	26	31
All	All	906/944 (96%)	850 (94%)	53 (6%)	3 (0%)	46	57

All (3) Ramachandran outliers are listed below:

Mol	Chain	Res	Type
1	C	56	GLY
2	D	289	THR
1	C	326	GLN

5.3.2 Protein sidechains ⓘ

In the following table, the Percentiles column shows the percent sidechain outliers of the chain as a percentile score with respect to all X-ray entries followed by that with respect to entries of similar resolution.

The Analysed column shows the number of residues for which the sidechain conformation was analysed, and the total number of residues.

Mol	Chain	Analysed	Rotameric	Outliers	Percentiles	
1	A	285/290 (98%)	278 (98%)	7 (2%)	55	73
1	C	284/290 (98%)	279 (98%)	5 (2%)	66	82
2	B	119/128 (93%)	117 (98%)	2 (2%)	68	83
2	D	125/128 (98%)	124 (99%)	1 (1%)	86	94
All	All	813/836 (97%)	798 (98%)	15 (2%)	66	82

All (15) residues with a non-rotameric sidechain are listed below:

Mol	Chain	Res	Type
1	A	90	GLN
1	A	103	LEU
1	A	236	MET
1	A	250	CYS
1	A	264	LEU
1	A	307	ASN
1	A	345	LYS
2	B	334	ASP

Continued on next page...

Continued from previous page...

Mol	Chain	Res	Type
2	B	382	ARG
1	C	90	GLN
1	C	307	ASN
1	C	316	TYR
1	C	344	LEU
1	C	345	LYS
2	D	318	ARG

Some sidechains can be flipped to improve hydrogen bonding and reduce clashes. All (9) such sidechains are listed below:

Mol	Chain	Res	Type
1	A	297	ASN
1	A	307	ASN
2	B	299	ASN
2	B	325	ASN
1	C	53	HIS
1	C	90	GLN
1	C	307	ASN
2	D	325	ASN
2	D	381	HIS

5.3.3 RNA [i](#)

There are no RNA molecules in this entry.

5.4 Non-standard residues in protein, DNA, RNA chains [i](#)

There are no non-standard protein/DNA/RNA residues in this entry.

5.5 Carbohydrates [i](#)

There are no carbohydrates in this entry.

5.6 Ligand geometry [i](#)

Of 6 ligands modelled in this entry, 2 are monoatomic - leaving 4 for Mogul analysis.

In the following table, the Counts columns list the number of bonds (or angles) for which Mogul statistics could be retrieved, the number of bonds (or angles) that are observed in the model and

the number of bonds (or angles) that are defined in the chemical component dictionary. The Link column lists molecule types, if any, to which the group is linked. The Z score for a bond length (or angle) is the number of standard deviations the observed value is removed from the expected value. A bond length (or angle) with $|Z| > 2$ is considered an outlier worth inspection. RMSZ is the root-mean-square of all Z scores of the bond lengths (or angles).

Mol	Type	Chain	Res	Link	Bond lengths			Bond angles		
					Counts	RMSZ	# Z > 2	Counts	RMSZ	# Z > 2
5	GDP	A	360	3,4	23,30,30	2.83	6 (26%)	30,47,47	3.11	11 (36%)
4	ALF	A	362	3,5,6	0,4,4	0.00	-	0,6,6	0.00	-
5	GDP	C	361	3,4	23,30,30	3.03	7 (30%)	30,47,47	3.18	10 (33%)
4	ALF	C	363	3,5,6	0,4,4	0.00	-	0,6,6	0.00	-

In the following table, the Chirals column lists the number of chiral outliers, the number of chiral centers analysed, the number of these observed in the model and the number defined in the chemical component dictionary. Similar counts are reported in the Torsion and Rings columns. '-' means no outliers of that kind were identified.

Mol	Type	Chain	Res	Link	Chirals	Torsions	Rings
5	GDP	A	360	3,4	-	0/12/32/32	0/3/3/3
4	ALF	A	362	3,5,6	-	0/0/0/0	0/0/0/0
5	GDP	C	361	3,4	-	0/12/32/32	0/3/3/3
4	ALF	C	363	3,5,6	-	0/0/0/0	0/0/0/0

All (13) bond length outliers are listed below:

Mol	Chain	Res	Type	Atoms	Z	Observed(Å)	Ideal(Å)
5	C	361	GDP	PB-O2B	-4.08	1.40	1.54
5	A	360	GDP	PB-O2B	-3.58	1.41	1.54
5	A	360	GDP	O3'-C3'	2.14	1.48	1.43
5	C	361	GDP	C5-C4	2.17	1.45	1.40
5	C	361	GDP	O4'-C4'	2.19	1.50	1.45
5	A	360	GDP	C8-N7	3.46	1.41	1.34
5	C	361	GDP	C8-N7	4.18	1.42	1.34
5	C	361	GDP	O6-C6	4.38	1.35	1.24
5	A	360	GDP	O6-C6	4.69	1.35	1.24
5	A	360	GDP	O4'-C1'	7.10	1.50	1.41
5	A	360	GDP	C2-N1	7.82	1.49	1.35
5	C	361	GDP	C2-N1	8.00	1.49	1.35
5	C	361	GDP	O4'-C1'	8.04	1.51	1.41

All (21) bond angle outliers are listed below:

Mol	Chain	Res	Type	Atoms	Z	Observed(°)	Ideal(°)
5	C	361	GDP	C6-C5-C4	-9.42	109.64	120.90
5	A	360	GDP	C6-C5-C4	-9.34	109.73	120.90
5	C	361	GDP	C4-C5-N7	-5.74	104.20	109.48
5	A	360	GDP	C4-C5-N7	-5.42	104.50	109.48
5	C	361	GDP	N2-C2-N1	-5.16	108.66	117.20
5	A	360	GDP	N3-C2-N1	-5.07	119.73	127.44
5	C	361	GDP	N3-C2-N1	-5.06	119.74	127.44
5	A	360	GDP	N2-C2-N1	-5.03	108.87	117.20
5	C	361	GDP	O3'-C3'-C4'	-2.51	103.51	111.05
5	A	360	GDP	O3A-PA-O5'	-2.37	96.65	102.94
5	C	361	GDP	O3B-PB-O1B	-2.20	103.51	110.58
5	A	360	GDP	O3B-PB-O1B	-2.11	103.80	110.58
5	A	360	GDP	O2B-PB-O1B	2.07	117.23	110.58
5	C	361	GDP	C2'-C3'-C4'	2.87	108.51	102.61
5	C	361	GDP	O3B-PB-O2B	3.02	118.88	107.38
5	A	360	GDP	O3B-PB-O2B	3.06	119.05	107.38
5	A	360	GDP	C2'-C3'-C4'	3.14	109.07	102.61
5	A	360	GDP	C4'-O4'-C1'	3.98	114.10	109.72
5	C	361	GDP	C4'-O4'-C1'	4.12	114.25	109.72
5	A	360	GDP	N2-C2-N3	7.09	131.41	117.80
5	C	361	GDP	N2-C2-N3	7.19	131.60	117.80

There are no chirality outliers.

There are no torsion outliers.

There are no ring outliers.

2 monomers are involved in 8 short contacts:

Mol	Chain	Res	Type	Clashes	Symm-Clashes
5	A	360	GDP	4	0
5	C	361	GDP	4	0

5.7 Other polymers [i](#)

There are no such residues in this entry.

5.8 Polymer linkage issues [i](#)

There are no chain breaks in this entry.

6 Fit of model and data ⓘ

6.1 Protein, DNA and RNA chains ⓘ

In the following table, the column labelled ‘#RSRZ> 2’ contains the number (and percentage) of RSRZ outliers, followed by percent RSRZ outliers for the chain as percentile scores relative to all X-ray entries and entries of similar resolution. The OWAB column contains the minimum, median, 95th percentile and maximum values of the occupancy-weighted average B-factor per residue. The column labelled ‘Q< 0.9’ lists the number of (and percentage) of residues with an average occupancy less than 0.9.

Mol	Chain	Analysed	<RSRZ>	#RSRZ>2	OWAB(Å ²)	Q<0.9
1	A	318/325 (97%)	0.29	13 (4%) 41 50	40, 58, 89, 104	0
1	C	317/325 (97%)	0.44	15 (4%) 35 44	43, 67, 90, 109	0
2	B	136/147 (92%)	0.46	6 (4%) 38 47	50, 73, 94, 103	0
2	D	143/147 (97%)	0.34	8 (5%) 28 36	41, 60, 91, 109	0
All	All	914/944 (96%)	0.38	42 (4%) 36 45	40, 64, 92, 109	0

All (42) RSRZ outliers are listed below:

Mol	Chain	Res	Type	RSRZ
2	D	282	ALA	6.9
2	D	418	ILE	6.4
1	A	344	LEU	5.9
1	C	345	LYS	5.4
1	A	345	LYS	4.3
1	C	344	LEU	3.5
1	A	310	ARG	3.4
2	D	298	PHE	3.4
1	A	343	ASN	3.4
2	B	383	TYR	3.4
1	C	190	LEU	3.3
2	B	414	LEU	3.3
1	C	210	CYS	3.3
2	B	342	LYS	3.1
1	C	55	ASP	3.1
2	B	298	PHE	3.1
1	C	310	ARG	2.9
1	A	190	LEU	2.9
1	A	340	ILE	2.8
2	B	341	SER	2.8
2	D	414	LEU	2.7

Continued on next page...

Continued from previous page...

Mol	Chain	Res	Type	RSRZ
1	C	285	GLU	2.7
1	C	287	ALA	2.6
1	A	28	ARG	2.5
1	C	340	ILE	2.5
2	D	283	LYS	2.5
1	C	326	GLN	2.5
1	C	341	LYS	2.5
1	C	93	ASP	2.5
1	C	175	VAL	2.3
1	A	254	TRP	2.3
2	D	295	ARG	2.3
2	D	290	LYS	2.3
1	C	189	ASP	2.3
2	D	417	ALA	2.2
1	A	60	GLU	2.1
1	A	326	GLN	2.1
1	C	162	GLY	2.1
1	A	101	ARG	2.1
1	A	118	GLU	2.0
1	A	189	ASP	2.0
2	B	379	HIS	2.0

6.2 Non-standard residues in protein, DNA, RNA chains ⓘ

There are no non-standard protein/DNA/RNA residues in this entry.

6.3 Carbohydrates ⓘ

There are no carbohydrates in this entry.

6.4 Ligands ⓘ

In the following table, the Atoms column lists the number of modelled atoms in the group and the number defined in the chemical component dictionary. LLDF column lists the quality of electron density of the group with respect to its neighbouring residues in protein, DNA or RNA chains. The B-factors column lists the minimum, median, 95th percentile and maximum values of B factors of atoms in the group. The column labelled 'Q< 0.9' lists the number of atoms with occupancy less than 0.9.

Mol	Type	Chain	Res	Atoms	RSCC	RSR	LLDF	B-factors(Å ²)	Q<0.9
3	MG	A	352	1/1	0.92	0.28	4.07	47,47,47,47	0

Continued on next page...

Continued from previous page...

Mol	Type	Chain	Res	Atoms	RSCC	RSR	LLDF	B-factors(\AA^2)	Q<0.9
3	MG	C	352	1/1	0.98	0.26	2.03	58,58,58,58	0
4	ALF	A	362	5/5	0.97	0.23	1.81	49,50,55,55	0
4	ALF	C	363	5/5	0.99	0.24	1.64	44,52,53,55	0
5	GDP	A	360	28/28	0.96	0.20	1.36	39,45,56,60	0
5	GDP	C	361	28/28	0.95	0.20	0.86	49,52,61,67	0

6.5 Other polymers [i](#)

There are no such residues in this entry.